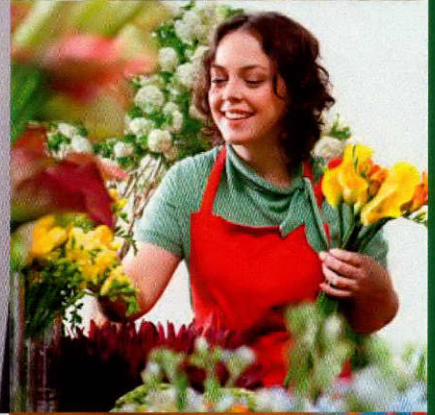
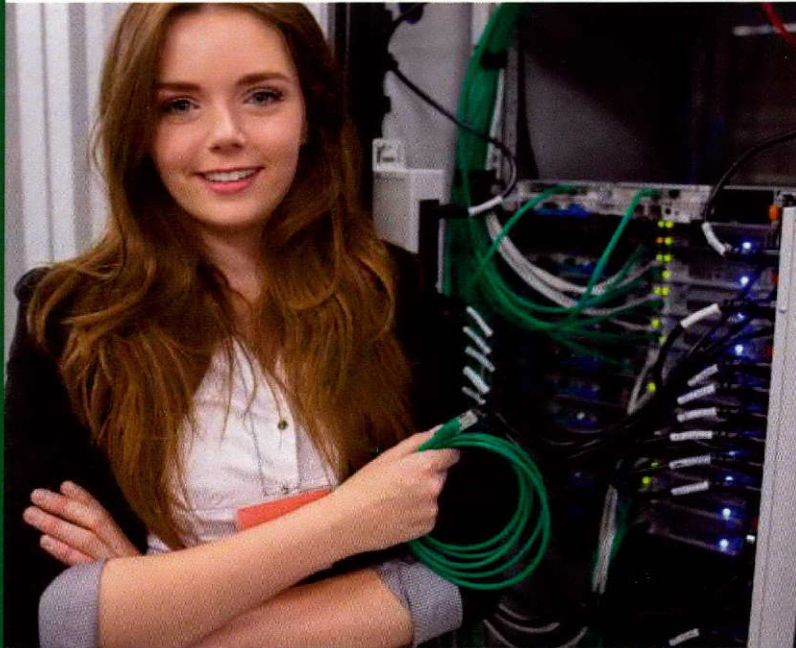


FIRST QUARTER 2016

# TEXAS QUARTERLY CENSUS OF EMPLOYMENT AND WAGES



BY INDUSTRY AND COUNTY



Prepared by the Labor Market & Career Information  
Department, Texas Workforce Commission



# Quarterly Census of Employment and Wages by Industry and County

## Description of the Data

This publication contains employment, payroll, and average weekly wage data by county for the specified quarter. These data were compiled from quarterly employment and wage reports submitted by employers subject to the Texas Unemployment Compensation Act (TUCA) and for civilian workers covered by the program of Unemployment Compensation for Federal Employees (UCFE). Quarterly average employment data have been tabulated by industry according to the North American Industry Classification System (NAICS) manual (see Industry Classification below) at the statewide and county levels. Payroll data represent the total wages paid by establishments during the quarter. Total wages are provided for each county and by industry for the state. Average weekly wage data are computed from employment and total wages reported by all establishments as well as just those establishments subject to the Texas Unemployment Compensation Act. Average weekly wage data are not to be confused with "prevailing" wage rates in various industries.

## Industry Classification

Since the release of first quarter 2001 data, industry information has been provided under the North American Industry Classification System (NAICS). Beginning with first quarter 2011 data, the Texas Workforce Commission (TWC) has released Quarterly Census of Employment and Wages (QCEW) data using the NAICS 2012 revision. NAICS revisions are implemented every five years, and are intended to keep the NAICS structure aligned with new and emerging technology industries. The 2012 revision was larger than the 2007 revision in the scope of the QCEW dataset that it affected, as 186 NAICS 2007 codes became obsolete and 76 new NAICS 2012 codes were established. As there are no plans for historical reconstruction of the data series, a series break was declared to have occurred. This negated the ability for the data for affected industries to be analyzed as continuous time series. For more information on NAICS 2012 code changes, please visit [www.census.gov/epcd/www/naics.html](http://www.census.gov/epcd/www/naics.html).

Although this publication does not contain data aggregated at the metropolitan statistical area (MSA) level, QCEW data for Texas will be available online using revised MSA definitions starting with the third quarter 2014 data. For more information on the revision process and specific changes to the composition of MSAs in Texas from this latest revision, please visit [www.bls.gov/sae/msadef.htm](http://www.bls.gov/sae/msadef.htm).

## Definition of covered employment, wages, and average weekly wage

Covered employment is the number of workers employed by employers subject to the Texas Unemployment Compensation Act during the pay period which included the 12<sup>th</sup> day of the month. Excluded from coverage are employment covered by the Railroad Retirement Act, self-employed, and unpaid family members.

The payroll data (total wages) used in this publication includes all wages and salaries paid to covered employees by their employers, including bonuses, commissions, and cash values or remuneration received in any medium other than cash.

The average weekly wage is the numeric calculation of total wages for the county divided by the number of employees in the county, divided by the number 13 (the number of weeks in a quarter). This figure is listed in Table 3 for those establishments that are covered by the Texas Unemployment Compensation Act, and also for all employers (those covered plus Federal Government civilian employment).

## NAICS Industry Structure

The NAICS industry hierarchy classifies data to the six-digit level. The first level consists of the Goods Producing and Service Providing industries. Below this is the Super Sector level. The third layer is the Sector level. Statewide data are published at both the Super Sector and Sector levels. Data for the 254 Texas counties are published at the Super Sector level only.

### NAICS Sector Aggregation Tree

	SUPER SECTOR	SECTOR	
Total Employment	(A) Natural Resources and Mining	Sector 11 – Agriculture, Forestry, Fishing and Hunting Sector 21 – Mining, Quarrying, and Oil and Gas Extraction	
	(B) Construction	Sector 23 – Construction	
	(C) Manufacturing	Sector 31-33 – Manufacturing	
	(D) Trade, Transportation, and Utilities		Sector 22 - Utilities
			Sector 42 – Wholesale Trade
			Sector 44-45 – Retail Trade
			Sector 48-49 – Transportation and Warehousing
	(E) Information	Sector 51 – Information	
	(F) Financial Activities		Sector 52 – Finance and Insurance
			Sector 53 – Real Estate and Rental and Leasing
	(G) Professional and Business Services		Sector 54 – Professional, Scientific, and Technical Services
			Sector 55 – Management of Companies and Enterprises
	(H) Education and Health Services		Sector 56 – Administrative and Support and Waste Management and Remediation Services
	(I) Leisure and Hospitality		Sector 61 – Educational Services
		Sector 62 – Health Care and Social Assistance	
(J) Other Services		Sector 71 – Arts, Entertainment, and Recreation	
		Sector 72 – Accommodation and Food Services	
(K) Public Administration		Sector 81 – Other Services (except Public Administration)	
(L) Unclassified		Sector 92 - Public Administration Sector 99 - Unclassified Establishments	

**Table 1. State Summary  
Employment and Total Payrolls by Industry  
First Quarter 2016**

Industry Group	Industry Code	UI Accounts	Reporting Units	Employment Month 1	Employment Month 2	Employment Month 3	Qtr. Average Employment	Total Wages	Average Weekly Wage
<b>Agriculture, forestry, fishing and hunting</b>	<b>11</b>	<b>9,554</b>	<b>9,730</b>	<b>57,163</b>	<b>57,379</b>	<b>57,892</b>	<b>57,478</b>	<b>\$472,456,266</b>	<b>\$632.29</b>
Crop production	111	3,749	3,784	19,850	20,870	21,610	20,777	\$145,383,502	\$538.26
Animal production	112	3,997	4,070	23,995	24,068	24,034	24,032	\$210,205,147	\$672.83
Forestry and logging	113	247	249	1,685	1,699	1,669	1,684	\$17,556,365	\$801.79
Fishing, hunting and trapping	114	199	199	588	579	566	578	\$5,007,908	\$666.86
Agriculture and forestry support activities	115	1,373	1,428	11,045	10,163	10,013	10,407	\$94,303,344	\$697.04
<b>Mining, quarrying, and oil and gas extraction</b>	<b>21</b>	<b>7,939</b>	<b>9,972</b>	<b>239,776</b>	<b>233,920</b>	<b>227,624</b>	<b>233,773</b>	<b>\$8,896,732,201</b>	<b>\$2,927.47</b>
Oil and gas extraction	211	3,182	4,014	98,061	97,157	95,993	97,070	\$5,609,010,009	\$4,444.84
Mining (except oil and gas)	212	291	418	10,870	11,059	11,262	11,064	\$203,553,983	\$1,415.26
Support activities for mining	213	4,510	5,540	130,845	125,704	120,369	125,639	\$3,084,168,209	\$1,888.29
<b>Utilities</b>	<b>22</b>	<b>1,101</b>	<b>1,886</b>	<b>49,084</b>	<b>49,148</b>	<b>49,200</b>	<b>49,144</b>	<b>\$1,523,882,422</b>	<b>\$2,385.27</b>
Utilities	221	1,101	1,886	49,084	49,148	49,200	49,144	\$1,523,882,422	\$2,385.27
<b>Construction</b>	<b>23</b>	<b>42,295</b>	<b>44,874</b>	<b>678,823</b>	<b>685,579</b>	<b>683,628</b>	<b>682,677</b>	<b>\$10,043,041,373</b>	<b>\$1,131.64</b>
Construction of buildings	236	11,209	11,913	154,651	156,292	156,615	155,853	\$2,989,208,132	\$1,475.36
Heavy and civil engineering construction	237	4,058	4,430	144,536	147,037	145,453	145,675	\$2,390,077,639	\$1,262.07
Specialty trade contractors	238	27,195	28,531	379,636	382,250	381,560	381,149	\$4,663,755,602	\$941.23
<b>Manufacturing</b>	<b>31-33</b>	<b>19,546</b>	<b>23,207</b>	<b>853,151</b>	<b>853,053</b>	<b>847,871</b>	<b>851,358</b>	<b>\$16,297,464,259</b>	<b>\$1,472.53</b>
Food manufacturing	311	1,856	2,051	88,601	88,730	88,198	88,510	\$905,675,272	\$787.12
Beverage and tobacco product manufacturing	312	392	479	14,198	14,356	14,031	14,195	\$214,663,867	\$1,163.27
Textile mills	313	85	91	1,666	1,669	1,675	1,670	\$18,236,715	\$840.01
Textile product mills	314	464	476	5,726	5,684	5,711	5,707	\$44,259,735	\$596.56
Apparel Manufacturing	315	251	257	5,041	5,138	5,141	5,107	\$48,909,029	\$736.73
Leather and allied product manufacturing	316	142	147	4,347	4,352	4,350	4,350	\$34,041,297	\$602.01
Wood product manufacturing	321	644	755	22,438	22,579	22,656	22,558	\$220,955,994	\$753.47
Paper manufacturing	322	244	314	17,076	17,160	17,225	17,154	\$270,964,436	\$1,215.10
Printing and related support activities	323	1,885	2,012	25,151	25,351	25,222	25,241	\$297,600,530	\$906.94
Petroleum and coal products manufacturing	324	178	261	22,593	22,625	22,611	22,610	\$951,895,959	\$3,238.56
Chemical manufacturing	325	1,041	1,474	78,027	78,160	78,210	78,132	\$2,358,869,926	\$2,322.36

**Table 1. State Summary**  
**Employment and Total Payrolls by Industry**  
**First Quarter 2016**

Industry Group	Industry Code	UI Accounts	Reporting Units	Employment Month 1	Employment Month 2	Employment Month 3	Qtr. Average Employment	Total Wages	Average Weekly Wage
Plastics and rubber products manufacturing	326	679	768	37,608	37,672	37,645	37,642	\$465,765,146	\$951.82
Nonmetallic mineral product manufacturing	327	776	1,169	37,141	37,349	37,446	37,312	\$527,889,500	\$1,088.31
Primary metal manufacturing	331	386	420	20,728	20,754	20,607	20,696	\$299,430,375	\$1,112.91
Fabricated metal product manufacturing	332	4,314	4,771	123,439	122,462	121,308	122,403	\$1,723,594,973	\$1,083.18
Machinery manufacturing	333	1,744	2,221	95,045	93,795	91,871	93,570	\$2,033,119,777	\$1,671.40
Computer and electronic product manufacturing	334	1,034	1,259	90,403	91,091	90,379	90,624	\$3,044,850,167	\$2,584.51
Electrical equipment and appliance mfg.	335	447	495	19,281	19,336	19,070	19,229	\$327,140,949	\$1,308.68
Transportation equipment manufacturing	336	777	905	91,877	91,925	91,704	91,835	\$1,898,753,170	\$1,590.43
Furniture and related product manufacturing	337	893	915	22,652	22,678	22,732	22,687	\$221,821,256	\$752.10
Miscellaneous manufacturing	339	1,874	1,967	30,113	30,187	30,079	30,126	\$389,026,186	\$993.32
<b>Wholesale trade</b>	<b>42</b>	<b>37,060</b>	<b>44,929</b>	<b>575,897</b>	<b>577,118</b>	<b>575,698</b>	<b>576,238</b>	<b>\$11,510,685,397</b>	<b>\$1,536.58</b>
Merchant wholesalers, durable goods	423	17,401	22,460	325,473	325,391	324,931	325,265	\$6,208,033,063	\$1,468.16
Merchant wholesalers, nondurable goods	424	8,072	10,037	174,628	175,520	174,506	174,885	\$3,235,766,981	\$1,423.25
Electronic markets and agents and brokers	425	11,841	12,432	75,796	76,207	76,261	76,088	\$2,066,885,353	\$2,089.57
<b>Retail trade</b>	<b>44-45</b>	<b>43,557</b>	<b>74,957</b>	<b>1,298,832</b>	<b>1,292,383</b>	<b>1,293,582</b>	<b>1,294,932</b>	<b>\$9,734,472,017</b>	<b>\$578.26</b>
Motor vehicle and parts dealers	441	6,599	9,511	179,670	180,373	180,744	180,262	\$2,211,155,626	\$943.56
Furniture and home furnishings stores	442	2,224	3,161	41,498	40,985	40,738	41,074	\$375,015,501	\$702.33
Electronics and Appliance Stores	443	2,114	3,521	46,023	45,000	44,533	45,185	\$522,884,567	\$890.15
Building material and garden supply stores	444	2,882	4,930	97,774	101,674	105,128	101,525	\$852,602,387	\$645.99
Food and beverage stores	445	6,705	8,747	232,195	233,379	231,864	232,479	\$1,446,841,046	\$478.73
Health and personal care stores	446	3,283	7,933	73,037	74,226	73,890	73,718	\$695,456,966	\$725.70
Gasoline stations	447	5,621	9,197	84,847	85,112	85,143	85,034	\$459,582,071	\$415.75
Clothing and clothing accessories stores	448	4,142	9,470	115,453	111,473	111,870	112,932	\$561,855,059	\$382.70
Sporting goods, hobby, book, and music stores	451	1,687	3,171	51,901	49,583	48,819	50,101	\$262,704,233	\$403.35
General merchandise stores	452	718	5,342	290,234	285,027	286,111	287,124	\$1,677,915,384	\$449.53
Miscellaneous store retailers	453	5,653	7,497	63,916	63,512	62,802	63,410	\$405,357,250	\$491.74
Nonstore retailers	454	2,261	2,477	22,284	22,039	21,940	22,088	\$263,101,927	\$916.29
<b>Transportation and warehousing</b>	<b>48-49</b>	<b>15,446</b>	<b>18,628</b>	<b>442,450</b>	<b>438,739</b>	<b>437,842</b>	<b>439,677</b>	<b>\$6,540,935,389</b>	<b>\$1,144.36</b>
Air transportation	481	351	474	60,560	60,552	60,695	60,602	\$1,387,399,336	\$1,761.04
Rail transportation	482	8	8	50	60	38	49	\$974,123	\$1,518.90

**Table 1. State Summary  
Employment and Total Payrolls by Industry  
First Quarter 2016**

Industry Group	Industry Code	UI Accounts	Reporting Units	Employment Month 1	Employment Month 2	Employment Month 3	Qtr. Average Employment	Total Wages	Average Weekly Wage
Water transportation	483	156	167	4,935	4,906	4,813	4,885	\$132,206,363	\$2,081.97
Truck transportation	484	8,428	9,423	137,607	137,068	136,543	137,073	\$1,755,475,722	\$985.15
Transit and ground passenger transportation	485	593	783	21,205	21,403	21,429	21,346	\$137,751,063	\$496.41
Pipeline transportation	486	151	616	18,404	18,455	18,464	18,441	\$909,215,591	\$3,792.62
Scenic and sightseeing transportation	487	100	100	758	813	855	809	\$3,954,470	\$376.16
Support activities for transportation	488	3,768	4,290	80,874	80,940	80,697	80,837	\$1,074,062,434	\$1,022.06
Postal service	491	63	64	1,003	966	965	978	\$4,575,115	\$359.85
Couriers and messengers	492	1,056	1,353	49,213	45,403	45,512	46,709	\$452,652,353	\$745.45
Warehousing and storage	493	919	1,350	67,841	68,173	67,831	67,948	\$682,668,819	\$772.84
<b>Information</b>	<b>51</b>	<b>5,789</b>	<b>8,829</b>	<b>198,482</b>	<b>198,615</b>	<b>197,780</b>	<b>198,292</b>	<b>\$4,356,067,091</b>	<b>\$1,689.84</b>
Publishing industries (except internet)	511	1,753	2,229	38,457	38,376	38,062	38,298	\$839,978,037	\$1,687.12
Motion picture and sound recording industries	512	994	1,209	22,044	21,864	21,619	21,842	\$182,961,332	\$644.34
Broadcasting (except internet)	515	464	685	16,449	16,469	16,413	16,444	\$277,772,964	\$1,299.42
Telecommunications	517	1,063	2,687	81,997	82,397	82,399	82,264	\$2,091,174,277	\$1,955.40
Data processing, hosting and related services	518	768	1,054	32,247	32,163	32,103	32,171	\$821,148,990	\$1,963.42
Other information services	519	839	965	7,288	7,346	7,184	7,273	\$143,031,491	\$1,512.85
<b>Finance and insurance</b>	<b>52</b>	<b>21,415</b>	<b>37,913</b>	<b>505,228</b>	<b>505,960</b>	<b>505,757</b>	<b>505,648</b>	<b>\$12,370,371,312</b>	<b>\$1,881.88</b>
Monetary authorities - central bank	521	---	---	---	---	---	---	---	---
Credit intermediation and related activities	522	4,161	14,460	254,707	254,893	254,808	254,803	\$5,234,945,059	\$1,580.39
Securities, commodity contracts, investments	523	5,915	8,147	64,630	64,789	64,646	64,688	\$3,098,859,145	\$3,684.96
Insurance carriers and related activities	524	11,340	15,123	183,941	184,316	184,345	184,201	\$3,989,395,859	\$1,665.99
Funds, trusts, and other financial vehicles	525	148	167	547	555	554	552	\$14,128,801	\$1,968.90
<b>Real estate and rental and leasing</b>	<b>53</b>	<b>19,965</b>	<b>28,054</b>	<b>198,046</b>	<b>198,673</b>	<b>197,899</b>	<b>198,206</b>	<b>\$3,112,804,330</b>	<b>\$1,208.07</b>
Real estate	531	17,120	22,692	135,603	136,285	135,939	135,942	\$2,237,724,382	\$1,266.22
Rental and leasing services	532	2,617	5,075	60,520	60,476	60,049	60,348	\$820,154,932	\$1,045.41
Lessors of nonfinancial intangible assets	533	280	287	1,923	1,912	1,911	1,915	\$54,925,016	\$2,205.88
<b>Professional and technical services</b>	<b>54</b>	<b>74,950</b>	<b>82,430</b>	<b>721,187</b>	<b>724,249</b>	<b>720,468</b>	<b>721,968</b>	<b>\$15,567,964,342</b>	<b>\$1,658.71</b>
Professional and technical services	541	74,950	82,430	721,187	724,249	720,468	721,968	\$15,567,964,342	\$1,658.71

**Table 1. State Summary  
Employment and Total Payrolls by Industry  
First Quarter 2016**

Industry Group	Industry Code	UI Accounts	Reporting Units	Employment Month 1	Employment Month 2	Employment Month 3	Qtr. Average Employment	Total Wages	Average Weekly Wage
<b>Management of companies and enterprises</b>	<b>55</b>	<b>2,389</b>	<b>2,773</b>	<b>118,166</b>	<b>118,051</b>	<b>117,883</b>	<b>118,033</b>	<b>\$4,416,396,735</b>	<b>\$2,878.19</b>
Management of companies and enterprises	551	2,389	2,773	118,166	118,051	117,883	118,033	\$4,416,396,735	\$2,878.19
<b>Administrative and waste services</b>	<b>56</b>	<b>28,053</b>	<b>33,877</b>	<b>748,546</b>	<b>753,669</b>	<b>751,504</b>	<b>751,240</b>	<b>\$8,034,040,312</b>	<b>\$822.64</b>
Administrative and support services	561	26,679	32,136	716,906	722,107	720,033	719,682	\$7,520,536,606	\$803.83
Waste management and remediation services	562	1,408	1,741	31,640	31,562	31,471	31,558	\$513,503,706	\$1,251.69
<b>Educational services</b>	<b>61</b>	<b>6,122</b>	<b>6,802</b>	<b>153,043</b>	<b>158,089</b>	<b>156,241</b>	<b>155,791</b>	<b>\$1,687,735,636</b>	<b>\$833.33</b>
Educational services	611	6,122	6,802	153,043	158,089	156,241	155,791	\$1,687,735,636	\$833.33
<b>Health care and social assistance</b>	<b>62</b>	<b>61,603</b>	<b>72,913</b>	<b>1,371,886</b>	<b>1,379,142</b>	<b>1,381,499</b>	<b>1,377,509</b>	<b>\$14,929,889,503</b>	<b>\$833.72</b>
Ambulatory health care services	621	41,008	48,331	681,608	685,997	687,051	684,885	\$8,011,366,395	\$899.80
Hospitals	622	631	859	318,146	319,730	321,138	319,671	\$4,585,273,839	\$1,103.36
Nursing and residential care facilities	623	2,376	3,554	180,925	180,644	180,606	180,725	\$1,337,966,394	\$569.49
Social assistance	624	17,816	20,169	191,207	192,771	192,704	192,227	\$995,282,875	\$398.28
<b>Arts, entertainment, and recreation</b>	<b>71</b>	<b>6,227</b>	<b>6,809</b>	<b>116,885</b>	<b>122,121</b>	<b>127,798</b>	<b>122,268</b>	<b>\$964,108,445</b>	<b>\$606.55</b>
Performing arts and spectator sports	711	2,019	2,065	24,232	26,653	27,825	26,237	\$409,474,319	\$1,200.53
Museums, historical sites, zoos, and parks	712	304	319	10,091	9,967	10,360	10,139	\$74,380,362	\$564.29
Amusements, gambling, and recreation	713	3,928	4,425	82,562	85,501	89,613	85,892	\$480,253,764	\$430.11
<b>Accommodation and food services</b>	<b>72</b>	<b>34,719</b>	<b>49,094</b>	<b>1,101,749</b>	<b>1,114,972</b>	<b>1,124,723</b>	<b>1,113,815</b>	<b>\$5,196,386,272</b>	<b>\$358.88</b>
Accommodation	721	4,637	5,676	113,953	115,276	116,382	115,204	\$784,318,134	\$523.70
Food services and drinking places	722	30,122	43,418	987,796	999,696	1,008,341	998,611	\$4,412,068,138	\$339.86
<b>Other services (except public administration)</b>	<b>81</b>	<b>49,076</b>	<b>53,570</b>	<b>313,964</b>	<b>315,694</b>	<b>314,563</b>	<b>314,740</b>	<b>\$2,784,788,670</b>	<b>\$680.61</b>
Repair and maintenance	811	14,636	15,817	123,740	124,801	123,115	123,885	\$1,369,282,918	\$850.22
Personal and laundry services	812	10,249	12,527	105,504	105,760	106,042	105,769	\$691,837,487	\$503.16
Membership associations and organizations	813	5,090	6,008	59,882	60,429	60,812	60,374	\$591,118,080	\$753.14
Private households	814	19,210	19,218	24,838	24,704	24,594	24,712	\$132,550,185	\$412.60
<b>Unclassified</b>	<b>99</b>	<b>2,541</b>	<b>2,562</b>	<b>4,467</b>	<b>4,490</b>	<b>4,442</b>	<b>4,466</b>	<b>\$52,705,101</b>	<b>\$907.73</b>



**Table 1. State Summary  
Employment and Total Payrolls by Industry  
First Quarter 2016**

Industry Group	Industry Code	UI Accounts	Reporting Units	Employment Month 1	Employment Month 2	Employment Month 3	Qtr. Average Employment	Total Wages	Average Weekly Wage
Federal Government		71	3,580	195,259	196,340	196,646	196,082	\$3,790,415,485	\$1,486.98
State Government		212	3,523	351,853	354,853	356,814	354,507	\$4,928,901,662	\$1,069.50
Local Government		4,003	9,867	1,288,976	1,306,488	1,309,988	1,301,817	\$13,813,927,862	\$816.25
All Industries and Federal Agencies		488,066	630,779	11,582,913	11,638,725	11,637,342	11,619,660	\$161,026,172,082	\$1,066.01
Industries With Texas UI Coverage Only		487,995	627,199	11,387,654	11,442,385	11,440,696	11,423,578	\$157,235,756,597	\$1,058.78

\* Number of UI accounts does not add across industries because some UI accounts have reporting units in multiple industries.

## Table 2. County Employment by Industry

First Quarter 2016

County	Total Employment	(A)	(B)	(C)	(D)	(E)	(F)	(G)	(H)	(I)	(J)	(L)	Fed	State	Local
ANDERSON	19,694	677	704	1,375	4,692	177	599	1,616	2,367	1,495	421	3,229	146	---	2,197
ANDREWS	6,925	1,593	790	269	1,315	100	374	362	151	418	186	0	12	29	1,326
ANGELINA	35,554	568	1,271	3,408	6,982	399	1,203	2,815	8,025	3,182	677	1	326	1,673	5,024
ARANSAS	6,009	297	328	54	1,265	56	267	555	528	1,363	200	1	20	86	990
ARCHER	1,619	278	96	56	329	---	38	128	88	32	47	16	20	21	471
ARMSTRONG	342	12	37	0	42	0	---	26	---	---	8	82	5	17	114
ATASCOSA	12,031	1,754	655	380	2,727	69	749	617	1,198	1,100	252	13	52	105	2,358
AUSTIN	9,893	227	877	1,371	2,854	74	408	646	937	801	202	13	70	73	1,339
BAILEY	2,363	487	45	176	612	64	67	46	190	201	47	2	21	17	389
BANDERA	3,080	145	276	42	539	30	122	223	349	468	155	5	14	52	661
BASTROP	16,694	499	965	1,082	3,844	236	521	618	1,789	2,627	441	13	361	188	3,510
BAYLOR	1,196	59	80	---	201	---	50	49	349	90	39	29	22	28	201
BEE	9,048	642	114	386	1,435	107	234	281	1,191	888	279	1,717	34	---	1,740
BELL	117,476	418	7,589	6,337	22,646	1,278	5,950	7,818	20,353	11,930	2,967	18	10,281	1,414	18,478
BEXAR	827,204	5,064	37,961	34,207	138,323	19,290	75,274	110,475	131,853	106,793	23,340	181	34,072	18,088	92,282
BLANCO	2,970	180	390	223	460	8	98	450	210	293	65	0	59	41	493
BORDEN	227	39	---	0	67	0	---	15	---	0	10	14	1	9	72
BOSQUE	3,523	135	173	505	491	81	152	188	300	194	62	3	60	43	1,136
BOWIE	41,791	177	1,333	1,737	9,289	356	1,634	3,017	7,812	4,937	1,123	6	4,170	1,334	4,867
BRAZORIA	102,355	1,915	13,237	13,024	18,787	429	3,439	7,965	9,955	11,472	3,225	32	465	3,152	15,259
BRAZOS	99,015	1,906	4,675	4,955	13,438	1,213	3,476	7,562	9,933	13,436	2,249	20	712	26,641	8,801
BREWSTER	3,613	65	124	29	515	96	137	152	287	859	92	555	277	---	425
BRISCOE	309	78	15	---	33	0	21	6	18	8	3	6	11	25	85
BROOKS	2,408	236	67	0	256	5	56	171	414	271	54	0	318	36	525
BROWN	15,765	161	548	2,894	2,789	187	512	657	3,432	1,317	333	0	126	866	1,945
BURLESON	3,943	366	353	297	1,010	9	141	182	361	289	122	1	50	45	717
BURNET	13,089	107	1,331	820	2,820	229	489	845	1,835	1,712	359	5	75	262	2,199
CALDWELL	7,976	367	353	525	1,902	58	264	374	1,370	889	175	10	54	84	1,551
CALHOUN	11,157	159	2,367	3,380	1,186	59	276	807	581	813	117	0	35	61	1,317
CALLAHAN	2,110	92	141	141	444	9	87	48	234	208	45	0	43	21	595
CAMERON	136,083	703	2,838	5,701	25,868	1,039	4,996	10,859	36,877	14,336	2,266	56	3,200	3,358	23,986
CAMP	3,856	677	231	133	1,190	---	105	118	482	238	47	589	28	18	---
CARSON	4,639	133	220	---	363	10	33	56	19	116	14	3,243	17	31	385
CASS	7,311	285	280	1,222	1,256	35	261	238	1,232	661	142	0	64	167	1,468
CASTRO	2,568	957	22	42	461	4	80	124	---	83	90	68	21	16	600
CHAMBERS	14,003	633	1,895	2,606	3,348	9	317	1,262	603	961	306	12	55	46	1,949
CHEROKEE	14,680	422	562	2,245	2,714	96	452	977	1,746	1,062	192	0	70	1,913	2,229

(A) - Natural Resources and Mining

(D) - Trade, Transportation, and Utilities

(G) - Professional and Business Services

(J) - Other Services

(B) - Construction

(E) - Information

(H) - Education and Health Services

(L) - Unclassified

(C) - Manufacturing

(F) - Financial Activities

(I) - Leisure and Hospitality

## Table 2. County Employment by Industry

First Quarter 2016

County	Total Employment	(A)	(B)	(C)	(D)	(E)	(F)	(G)	(H)	(I)	(J)	(L)	Fed	State	Local
CHILDRESS	2,426	70	63	---	494	31	112	91	137	272	67	5	20	436	627
CLAY	1,315	72	21	68	323	---	38	14	147	45	50	4	21	28	484
COCHRAN	699	166	---	---	95	0	21	7	43	5	9	16	12	13	311
COKE	672	29	41	---	123	4	27	55	26	14	11	4	13	16	309
COLEMAN	2,042	51	100	91	426	---	117	54	352	197	34	29	39	27	524
COLLIN	369,869	1,093	16,024	23,672	64,817	15,066	37,541	66,394	46,403	42,381	9,355	5,745	1,690	---	39,688
COLLINGSWORTH	860	86	23	---	138	12	29	45	184	61	33	23	14	13	199
COLORADO	6,732	416	540	1,144	1,391	22	191	266	836	624	186	0	49	95	972
COMAL	48,590	563	5,049	2,972	12,213	536	1,476	5,208	6,278	7,061	1,377	9	181	169	5,498
COMANCHE	3,525	633	100	142	787	---	154	125	402	199	79	52	44	22	788
CONCHO	860	39	10	21	87	0	26	---	127	53	10	234	13	17	222
COOKE	14,381	989	497	3,474	2,942	105	596	524	682	1,332	378	7	59	475	2,321
CORYELL	15,263	142	862	345	2,260	161	794	1,259	1,026	1,726	437	2,982	166	---	3,102
COTTLE	355	33	---	0	63	0	---	13	32	18	14	45	11	31	96
CRANE	1,329	364	---	---	291	---	47	49	108	46	---	47	6	12	360
CROCKETT	1,492	238	72	---	355	---	108	37	20	204	47	6	3	26	375
CROSBY	1,368	239	18	---	311	---	53	45	145	39	11	24	18	23	441
CULBERSON	1,189	78	22	---	398	0	13	7	---	214	28	131	86	36	175
DALLAM	4,319	1,371	330	585	822	46	160	151	68	269	236	3	20	25	233
DALLAS	1,610,978	8,763	81,008	108,052	328,338	47,454	153,458	327,161	190,695	151,630	40,824	558	25,105	19,919	128,013
DAWSON	4,188	762	87	70	978	22	120	107	224	303	114	390	72	---	939
DEAF SMITH	7,530	1,397	296	1,413	1,708	69	228	122	273	455	181	0	51	48	1,288
DELTA	1,352	21	57	---	65	---	21	26	799	14	7	21	19	25	276
DENTON	221,635	853	11,713	15,301	52,385	3,171	13,381	27,271	28,497	28,990	5,729	63	1,608	7,872	24,800
DEWITT	7,367	493	427	1,030	1,174	17	484	263	438	578	153	0	31	382	1,896
DICKENS	445	52	---	---	92	---	17	16	15	29	11	45	12	14	143
DIMITT	5,696	1,226	430	47	857	---	179	---	590	475	57	625	270	41	900
DONLEY	996	94	17	22	130	4	51	23	60	103	36	0	14	29	412
DUVAL	3,185	442	162	---	366	---	42	103	558	124	---	420	117	---	851
EASTLAND	6,639	634	508	566	1,364	25	315	301	799	462	197	0	47	86	1,335
ECTOR	68,167	8,147	6,824	4,403	16,159	360	3,151	3,813	5,090	7,485	2,561	2	187	1,451	8,535
EDWARDS	368	42	18	---	75	---	10	---	---	14	5	52	21	12	119
EL PASO	291,782	942	14,215	16,746	62,936	4,773	11,906	31,601	41,305	32,946	6,823	71	12,367	9,197	45,953
ELLIS	47,461	206	2,935	10,336	10,693	368	1,185	3,739	4,553	4,790	1,161	7	221	211	7,056
ERATH	16,104	967	978	1,809	2,830	54	495	829	1,772	1,875	416	2,545	73	---	1,462
FALLS	3,123	175	67	137	627	11	75	101	434	158	94	484	44	---	715
FANNIN	7,212	151	313	651	1,346	33	321	197	872	583	143	535	696	---	1,372

(A) - Natural Resources and Mining

(D) - Trade, Transportation, and Utilities

(G) - Professional and Business Services

(J) - Other Services

(B) - Construction

(E) - Information

(H) - Education and Health Services

(L) - Unclassified

(C) - Manufacturing

(F) - Financial Activities

(I) - Leisure and Hospitality

## Table 2. County Employment by Industry

First Quarter 2016

County	Total Employment	(A)	(B)	(C)	(D)	(E)	(F)	(G)	(H)	(I)	(J)	(L)	Fed	State	Local
FAYETTE	9,165	675	433	930	2,218	114	497	360	1,093	1,094	182	8	67	68	1,428
FISHER	947	186	7	---	168	---	42	48	52	24	11	88	17	15	289
FLOYD	1,468	250	33	37	279	---	55	65	89	58	47	18	28	18	490
FOARD	302	18	10	---	63	0	---	---	58	7	8	49	10	---	80
FORT BEND	170,500	3,901	11,520	13,432	35,643	1,697	6,270	18,882	25,638	23,870	5,089	80	710	2,783	20,984
FRANKLIN	2,993	87	108	---	1,318	---	90	103	490	161	96	80	17	30	414
FREESTONE	5,061	707	268	145	913	48	218	171	529	578	107	0	37	340	1,001
FRIO	6,331	1,170	289	131	1,226	35	136	633	624	474	77	1	139	363	1,031
GAINES	6,068	1,910	458	162	1,098	22	168	92	145	381	100	3	25	24	1,479
GALVESTON	104,348	844	5,879	6,038	18,787	589	5,775	8,665	10,926	17,171	2,816	44	890	11,875	14,050
GARZA	1,793	318	111	---	286	---	39	351	92	149	44	10	12	30	351
GILLESPIE	10,149	114	916	969	2,170	110	417	450	1,751	1,793	241	2	49	96	1,071
GLASSCOCK	536	289	10	---	45	0	6	9	0	---	---	51	6	---	120
GOLIAD	1,283	78	53	17	253	---	34	41	124	183	11	3	16	36	434
GONZALES	7,012	1,041	181	1,072	1,643	33	274	226	425	445	129	2	61	66	1,414
GRAY	7,866	949	278	1,032	1,703	37	243	375	813	643	212	1	43	398	1,137
GRAYSON	44,100	360	2,566	5,579	8,067	375	2,810	2,901	8,953	4,901	909	14	328	217	6,119
GREGG	74,895	3,529	8,619	7,806	15,489	718	3,085	6,523	12,744	7,128	1,721	14	352	354	6,813
GRIMES	7,182	365	365	1,735	1,471	21	268	282	289	405	104	707	47	---	1,123
GUADALUPE	37,226	301	2,228	7,247	9,131	229	1,104	2,409	3,114	4,090	1,029	13	206	161	5,964
HALE	11,604	845	459	669	3,307	38	400	325	1,707	1,034	359	9	74	520	1,858
HALL	819	118	12	---	106	9	46	33	110	50	46	23	17	15	234
HAMILTON	2,455	103	123	176	556	8	55	63	276	241	52	0	31	100	670
HANSFORD	2,141	686	67	39	364	---	117	63	41	71	58	3	16	13	603
HARDEMAN	1,128	78	35	178	169	---	40	4	62	102	42	7	16	23	372
HARDIN	12,529	392	1,127	864	2,975	92	298	518	1,981	1,549	361	0	71	71	2,230
HARRIS	2,256,393	80,493	163,385	175,491	465,247	26,498	121,029	384,002	282,244	222,416	63,885	781	24,411	49,381	197,130
HARRISON	23,077	1,500	1,112	5,772	4,046	152	1,023	1,294	2,550	1,561	762	2	118	322	2,863
HARTLEY	2,401	660	196	---	421	---	22	44	84	---	62	342	6	---	563
HASKELL	1,671	152	51	27	442	---	47	188	126	106	74	6	25	38	389
HAYS	61,906	238	4,733	4,422	14,672	669	2,276	4,769	6,963	8,458	1,775	5,051	218	---	7,661
HEMPHILL	1,973	409	95	53	568	22	116	66	36	89	35	0	10	18	455
HENDERSON	16,187	249	746	2,140	3,322	160	686	927	2,255	1,803	370	5	84	306	3,134
HIDALGO	248,150	4,947	6,344	6,480	53,078	2,205	8,806	15,518	64,999	23,407	3,859	38	4,139	8,105	46,225
HILL	9,535	278	1,040	909	2,314	37	258	386	950	919	156	1	116	77	2,095
HOCKLEY	9,703	2,517	448	225	1,733	55	268	294	668	519	882	6	40	51	1,997
HOOD	15,548	1,886	944	621	3,299	220	899	910	2,275	1,973	519	2	95	69	1,836

(A) - Natural Resources and Mining

(D) - Trade, Transportation, and Utilities

(G) - Professional and Business Services

(J) - Other Services

(B) - Construction

(E) - Information

(H) - Education and Health Services

(L) - Unclassified

(C) - Manufacturing

(F) - Financial Activities

(I) - Leisure and Hospitality

## Table 2. County Employment by Industry

First Quarter 2016

County	Total Employment	(A)	(B)	(C)	(D)	(E)	(F)	(G)	(H)	(I)	(J)	(L)	Fed	State	Local
HOPKINS	12,533	337	552	1,473	3,434	141	575	1,176	1,027	1,158	226	7	70	124	2,235
HOUSTON	6,257	163	256	660	1,185	58	282	504	676	569	206	729	71	---	898
HOWARD	12,560	1,001	491	1,014	2,312	152	398	369	1,506	1,312	378	659	935	---	2,034
HUDSPETH	1,157	151	---	---	133	---	9	---	34	16	6	224	316	20	248
HUNT	28,882	109	850	7,166	4,737	189	713	1,492	3,123	2,578	445	10	254	2,455	4,762
HUTCHINSON	8,800	1,473	1,293	1,012	1,438	---	225	228	482	739	340	21	65	51	1,434
IRION	965	623	49	---	106	0	---	16	---	12	8	31	3	5	112
JACK	3,063	808	538	55	462	---	92	174	90	169	29	3	19	43	579
JACKSON	5,430	441	717	---	795	97	164	119	262	241	112	1,386	29	25	1,043
JASPER	9,864	171	627	1,333	2,060	36	293	364	1,829	885	188	0	73	304	1,702
JEFF DAVIS	943	---	15	---	62	0	32	14	---	198	22	363	21	118	98
JEFFERSON	122,586	725	12,928	16,534	23,731	1,084	4,455	12,369	18,137	11,434	4,174	17	1,796	4,308	10,894
JIM HOGG	1,711	121	18	58	249	---	53	53	472	64	13	2	234	28	345
JIM WELLS	16,703	3,014	409	453	3,077	40	836	678	4,177	1,453	222	2	95	137	2,108
JOHNSON	44,000	1,362	3,287	6,040	10,404	452	1,234	2,532	5,269	4,403	1,462	6	238	214	7,097
JONES	3,014	309	130	236	599	20	148	59	330	150	61	1	51	60	860
KARNES	5,600	997	97	212	965	---	179	539	225	547	67	618	65	---	1,088
KAUFMAN	29,194	90	2,205	3,995	6,964	174	842	1,603	2,878	3,009	752	1,073	173	---	5,434
KENDALL	14,068	214	1,688	874	3,359	134	896	1,447	1,664	1,584	459	16	54	45	1,633
KENEDY	499	---	0	0	62	0	---	---	---	32	16	309	1	3	75
KENT	270	15	---	0	31	0	---	---	24	---	0	25	7	11	157
KERR	17,493	167	1,212	1,025	3,369	253	636	1,214	3,603	2,223	716	0	464	702	1,910
KIMBLE	1,279	33	118	54	254	---	57	26	155	252	38	4	14	62	213
KING	71	11	0	0	0	0	0	---	0	---	6	1	2	3	48
KINNEY	788	27	---	---	132	0	---	---	15	19	80	79	144	22	270
KLEBERG	12,255	482	383	300	1,713	92	402	431	1,964	1,537	252	3	842	2,238	1,615
KNOX	1,161	252	63	---	241	---	38	2	56	47	13	17	28	17	385
LA SALLE	3,041	1,247	168	0	227	0	30	123	111	288	32	9	109	150	548
LAMAR	20,507	185	1,159	4,415	3,605	133	859	1,382	3,385	1,870	441	3	141	262	2,666
LAMB	3,701	871	89	72	793	0	140	242	272	158	56	0	37	42	928
LAMPASAS	4,434	63	452	574	872	28	130	216	446	401	164	1	35	62	991
LAVACA	5,481	283	232	981	1,296	29	188	197	900	306	111	2	55	39	862
LEE	6,976	675	---	441	1,059	28	300	250	370	383	141	2,553	25	---	750
LEON	5,066	722	823	658	934	17	210	106	105	458	139	5	42	52	795
LIBERTY	16,459	959	1,060	972	3,770	86	529	880	1,744	1,422	372	10	104	1,020	3,532
LIMESTONE	7,597	387	119	458	1,537	23	259	224	989	413	116	1,531	48	---	1,493
LIPSCOMB	1,254	179	40	---	223	---	47	33	11	---	11	313	25	9	364

(A) - Natural Resources and Mining

(D) - Trade, Transportation, and Utilities

(G) - Professional and Business Services

(J) - Other Services

(B) - Construction

(E) - Information

(H) - Education and Health Services

(L) - Unclassified

(C) - Manufacturing

(F) - Financial Activities

(I) - Leisure and Hospitality

**Table 2. County Employment by Industry**  
**First Quarter 2016**

County	Total Employment	(A)	(B)	(C)	(D)	(E)	(F)	(G)	(H)	(I)	(J)	(L)	Fed	State	Local
LIVE OAK	3,759	569	239	---	748	11	189	160	151	404	76	350	250	27	586
LLANO	4,551	59	351	159	841	24	254	174	546	1,180	134	5	29	31	766
LOVING	51	---	---	---	---	0	---	---	0	---	0	51	0	0	---
LUBBOCK	134,655	1,258	6,076	4,704	28,690	3,527	7,518	11,110	21,655	17,422	4,089	14	1,281	11,200	16,111
LYNN	1,312	292	20	27	224	42	65	21	16	18	19	3	19	15	530
MADISON	4,838	---	488	120	898	14	125	121	327	519	124	1,475	19	---	609
MARION	2,003	6	---	307	306	---	46	49	486	344	29	5	36	19	371
MARTIN	1,986	228	402	---	440	---	43	50	139	81	36	75	13	12	467
MASON	1,035	115	29	30	208	---	52	41	113	130	32	12	13	21	239
MATAGORDA	10,702	656	572	499	3,032	56	328	571	975	1,095	431	1	113	91	2,282
MAVERICK	17,751	385	209	768	3,687	95	548	402	3,843	1,452	134	4	883	165	5,175
MCCULLOCH	2,817	454	86	134	758	28	100	71	294	264	72	1	27	40	488
MCLENNAN	108,146	267	6,578	16,075	18,976	1,037	6,024	11,170	17,157	11,106	2,706	10	2,611	2,412	12,015
MCMULLEN	652	237	---	---	144	---	32	26	---	22	6	20	8	32	126
MEDINA	9,262	509	811	161	1,867	67	375	573	641	989	189	1	59	545	2,475
MENARD	388	16	10	---	87	---	28	2	---	25	11	27	7	4	172
MIDLAND	84,025	19,086	4,405	3,069	17,577	929	3,631	8,221	6,875	8,595	2,351	25	541	526	8,195
MILAM	5,700	204	722	299	995	50	267	483	910	403	111	1	50	47	1,158
MILLS	1,277	87	43	88	260	---	57	40	135	44	44	84	13	17	363
MITCHELL	2,152	294	35	---	303	11	58	30	57	134	18	460	21	---	732
MONTAGUE	4,828	692	202	388	930	33	187	131	404	407	134	0	49	61	1,209
MONTGOMERY	166,508	5,135	12,623	10,868	33,485	1,250	8,496	20,664	18,788	21,920	5,408	64	889	509	26,412
MOORE	10,329	902	619	---	1,677	48	180	355	303	669	179	3,709	70	47	1,571
MORRIS	3,719	38	70	1,507	732	30	117	84	293	119	79	0	29	47	575
MOTLEY	319	41	2	12	70	0	---	---	39	24	11	10	12	14	84
NACOGDOCHES	22,061	397	1,120	2,862	3,866	131	874	1,692	2,596	2,625	496	2,069	151	---	3,180
NAVARRO	15,961	229	801	2,913	3,278	130	632	800	2,281	1,249	300	2	96	121	3,129
NEWTON	1,460	106	13	109	206	---	---	61	309	18	---	18	21	23	575
NOLAN	5,913	219	375	811	1,130	33	160	265	347	770	263	7	41	275	1,217
NUECES	158,039	3,651	13,474	7,710	28,896	1,588	6,782	14,694	27,611	21,276	4,589	24	5,726	5,164	16,854
OCHILTREE	4,756	1,588	488	43	946	35	128	94	147	341	128	3	18	20	778
OLDHAM	1,154	102	---	---	105	---	---	9	---	36	9	590	7	21	275
ORANGE	22,221	92	2,358	4,590	4,403	76	774	1,230	1,573	2,395	505	3	99	343	3,779
PALO PINTO	8,496	670	372	1,712	1,627	34	253	284	542	1,039	187	6	58	145	1,566
PANOLA	8,753	912	1,906	913	1,428	49	239	500	908	340	134	3	66	59	1,294
PARKER	31,217	1,969	2,307	2,556	7,244	229	937	2,225	3,760	3,505	1,023	10	177	147	5,129
PARMER	5,651	1,267	100	---	438	24	71	231	222	79	75	2,292	70	16	765

(A) - Natural Resources and Mining	(D) - Trade, Transportation, and Utilities	(G) - Professional and Business Services	(J) - Other Services
(B) - Construction	(E) - Information	(H) - Education and Health Services	(L) - Unclassified
(C) - Manufacturing	(F) - Financial Activities	(I) - Leisure and Hospitality	

**Table 2. County Employment by Industry**  
**First Quarter 2016**

County	Total Employment	(A)	(B)	(C)	(D)	(E)	(F)	(G)	(H)	(I)	(J)	(L)	Fed	State	Local
PECOS	5,600	691	237	171	1,244	18	241	202	186	632	87	0	51	568	1,272
POLK	10,736	200	398	---	2,238	132	437	570	1,194	1,106	260	1,163	77	870	2,091
POTTER	78,399	715	3,494	8,192	15,586	827	4,841	6,700	12,492	8,212	2,464	20	1,953	2,777	10,127
PRESIDIO	2,172	---	42	---	280	---	55	46	109	203	21	501	305	71	539
RAINS	1,900	29	124	97	422	---	56	264	151	181	56	9	18	19	474
RANDALL	29,824	362	2,112	1,289	8,556	415	1,290	2,438	3,206	4,573	1,111	8	177	2,229	2,060
REAGAN	1,725	510	119	0	518	0	22	18	---	96	26	6	11	10	390
REAL	725	32	29	24	117	---	21	14	133	122	13	3	5	10	202
RED RIVER	2,488	130	125	391	331	11	96	78	503	79	17	4	37	34	651
REEVES	4,427	361	407	26	862	23	184	141	180	602	39	0	67	57	1,477
REFUGIO	2,251	373	200	2	379	0	72	42	112	267	89	0	31	27	658
ROBERTS	263	92	---	0	39	0	0	6	0	---	---	10	5	---	111
ROBERTSON	3,826	497	180	134	1,018	10	113	86	311	385	53	1	35	44	960
ROCKWALL	27,192	78	1,772	1,668	6,464	191	962	2,598	4,464	4,184	1,060	45	108	48	3,549
RUNNELS	2,859	150	120	505	558	---	101	132	268	140	51	0	39	37	758
RUSK	13,218	1,194	933	1,430	2,414	133	514	1,346	1,468	964	299	1	67	187	2,268
SABINE	2,185	100	118	---	317	---	70	24	528	100	38	332	45	39	475
SAN AUGUSTINE	1,570	54	96	73	424	---	34	31	398	36	15	4	18	29	359
SAN JACINTO	2,089	21	95	114	377	4	75	113	155	148	48	2	26	39	871
SAN PATRICIO	18,614	983	3,226	1,237	3,408	160	475	1,194	1,339	2,173	347	5	89	146	3,832
SAN SABA	1,614	229	29	34	447	---	35	39	103	102	67	28	20	172	310
SCHLEICHER	894	206	128	---	133	---	29	18	68	---	13	20	14	7	259
SCURRY	7,411	1,956	366	159	1,427	51	201	284	293	618	217	0	38	367	1,435
SHACKELFORD	1,294	501	26	92	189	---	50	19	60	79	23	11	13	14	216
SHELBY	8,233	881	305	2,065	1,508	22	394	455	620	464	144	4	74	57	1,240
SHERMAN	1,022	418	9	---	184	---	20	15	16	40	13	27	9	13	258
SMITH	100,387	3,240	3,898	6,623	21,417	2,216	4,565	8,390	22,070	10,499	3,250	11	631	4,092	9,485
SOMERVELL	3,835	99	102	102	1,503	9	63	223	463	409	114	0	12	35	702
STARR	15,442	257	144	52	1,926	140	309	448	5,015	882	91	2	756	202	5,219
STEPHENS	3,122	398	209	625	511	13	145	50	252	200	57	177	17	---	469
STERLING	615	163	43	0	120	0	31	20	---	---	22	47	5	11	153
STONEWALL	503	72	45	0	52	0	---	---	5	37	35	14	14	12	217
SUTTON	1,921	337	108	62	604	---	45	121	38	158	27	0	8	33	380
SWISHER	1,839	355	40	90	300	---	36	24	82	124	43	30	22	157	536
TARRANT	834,504	9,056	44,886	78,551	202,381	10,354	51,518	96,861	109,185	95,907	24,581	176	14,235	10,985	85,826
TAYLOR	60,196	1,008	3,137	2,514	11,678	1,009	3,386	5,244	12,008	7,329	1,993	11	1,120	3,187	6,573
TERRELL	282	10	9	0	39	0	---	9	---	30	---	21	51	24	89

(A) - Natural Resources and Mining	(D) - Trade, Transportation, and Utilities	(G) - Professional and Business Services	(J) - Other Services
(B) - Construction	(E) - Information	(H) - Education and Health Services	(L) - Unclassified
(C) - Manufacturing	(F) - Financial Activities	(I) - Leisure and Hospitality	

**Table 2. County Employment by Industry**  
**First Quarter 2016**

County	Total Employment	(A)	(B)	(C)	(D)	(E)	(F)	(G)	(H)	(I)	(J)	(L)	Fed	State	Local
TERRY	3,669	720	72	175	747	19	93	171	240	268	80	6	24	180	876
THROCKMORTON	474	87	---	---	86	0	---	8	25	11	5	72	6	13	160
TITUS	15,563	292	260	5,555	2,466	81	467	659	1,446	1,212	208	6	100	140	2,671
TOM GREEN	46,593	1,398	2,103	3,313	8,943	756	2,410	3,586	8,105	5,792	1,432	13	1,168	2,319	5,255
TRAVIS	689,285	2,462	35,081	36,843	104,099	23,707	43,173	130,720	79,409	85,064	24,543	254	11,175	57,887	54,869
TRINITY	2,310	35	74	---	383	---	76	54	373	392	116	188	21	22	576
TYLER	3,809	160	71	160	796	---	142	105	335	220	51	640	44	---	1,083
UPSHUR	6,547	134	656	318	1,120	352	269	365	763	652	90	1	58	67	1,701
UPTON	1,571	478	99	---	345	0	29	19	29	30	---	64	5	16	456
UVALDE	9,711	655	285	488	2,001	68	352	593	1,268	966	264	0	216	210	2,346
VAL VERDE	17,117	116	320	1,847	3,346	142	597	841	2,972	1,686	256	0	2,111	191	2,693
VAN ZANDT	10,215	426	927	875	1,968	46	338	517	1,049	1,442	247	5	87	90	2,198
VICTORIA	39,620	2,157	2,378	2,224	9,605	424	1,801	2,487	6,328	4,285	1,250	6	195	266	6,215
WALKER	24,043	175	661	1,046	2,839	152	609	715	2,171	2,403	466	6	129	10,534	2,137
WALLER	15,900	485	949	3,697	3,037	25	346	640	1,185	1,066	211	14	57	2,148	2,039
WARD	4,328	1,230	220	145	960	31	201	189	119	369	65	0	14	40	744
WASHINGTON	14,575	267	538	2,349	3,329	159	864	613	1,897	1,327	236	1,095	75	---	1,825
WEBB	96,982	1,911	1,870	700	29,918	690	3,954	8,460	15,258	10,484	1,657	4	3,201	2,165	16,712
WHARTON	15,247	2,313	647	1,526	3,545	78	568	377	1,732	1,278	331	6	82	99	2,663
WHEELER	2,244	491	54	18	376	---	64	68	148	357	19	9	24	18	598
WICHITA	53,069	1,114	1,743	4,621	10,722	685	2,447	3,392	9,134	6,178	1,748	1	1,846	3,089	6,348
WILBARGER	5,925	264	105	904	932	103	195	112	249	461	130	1,419	36	---	1,015
WILLACY	3,526	296	53	27	533	---	134	320	377	349	56	134	31	68	1,149
WILLIAMSON	153,364	1,039	10,641	11,785	36,884	1,794	7,481	18,265	18,127	19,043	5,311	77	667	420	21,830
WILSON	7,667	391	709	394	1,558	62	221	338	783	629	162	7	82	63	2,267
WINKLER	2,504	633	308	---	537	---	101	87	41	117	64	10	9	11	587
WISE	19,290	1,973	1,234	1,982	4,012	95	601	881	2,290	1,640	449	10	116	143	3,865
WOOD	9,655	363	475	1,271	1,785	153	425	428	1,728	903	255	1	93	256	1,520
YOAKUM	3,588	1,241	343	36	576	---	92	77	99	177	77	8	14	12	837
YOUNG	6,782	715	204	1,155	1,056	73	313	323	883	530	126	4	38	66	1,295
ZAPATA	3,468	905	148	27	430	10	213	128	288	211	28	0	131	24	927
ZAVALA	2,687	201	65	---	218	---	62	129	480	164	55	338	9	30	936

When there was no employment reported in a county in one of the industry groups, a "0" is shown. When one employer comprises 80% or more of the employment for an industry group in a county, or there are fewer than three employers for an industry group in a county, a dash (---) is shown. The employment for that industry is included in (L) - Unclassified so as not to reveal information about individual establishments.

(A) - Natural Resources and Mining	(D) - Trade, Transportation, and Utilities	(G) - Professional and Business Services	(J) - Other Services
(B) - Construction	(E) - Information	(H) - Education and Health Services	(L) - Unclassified
(C) - Manufacturing	(F) - Financial Activities	(I) - Leisure and Hospitality	



**Table 3. Covered Employment and Wages for All Industries**  
**First Quarter 2016**

County	Total (Including Federal)			Total (Excluding Federal)		
	Employment	Wages	AWW*	Employment	Wages	AWW*
ANDERSON	19,694	\$193,762,026	\$756.83	19,548	\$191,829,579	\$754.88
ANDREWS	6,925	\$96,462,774	\$1,071.56	6,913	\$96,295,400	\$1,071.56
ANGELINA	35,554	\$329,488,086	\$712.86	35,228	\$323,885,528	\$707.23
ARANSAS	6,009	\$50,938,790	\$652.08	5,989	\$50,650,007	\$650.52
ARCHER	1,619	\$13,364,745	\$634.86	1,599	\$13,133,205	\$631.80
ARMSTRONG	342	\$3,028,939	\$680.61	338	\$2,977,203	\$678.23
ATASCOSA	12,031	\$126,509,663	\$808.87	11,979	\$125,833,982	\$808.04
AUSTIN	9,893	\$102,468,702	\$796.77	9,822	\$101,456,997	\$794.56
BAILEY	2,363	\$22,230,256	\$723.77	2,341	\$22,000,152	\$722.80
BANDERA	3,080	\$25,314,068	\$632.22	3,066	\$25,128,670	\$630.45
BASTROP	16,694	\$147,401,791	\$679.19	16,333	\$141,533,560	\$666.56
BAYLOR	1,196	\$9,659,227	\$621.08	1,174	\$9,428,555	\$617.60
BEE	9,048	\$81,292,136	\$691.14	9,014	\$80,952,149	\$690.82
BELL	117,476	\$1,287,207,899	\$842.86	107,196	\$1,112,972,662	\$798.66
BEXAR	827,204	\$10,056,657,887	\$935.19	793,132	\$9,439,172,284	\$915.47
BLANCO	2,970	\$29,045,305	\$752.27	2,911	\$28,203,396	\$745.27
BORDEN	227	\$1,753,919	\$594.35	226	\$1,748,825	\$595.24
BOSQUE	3,523	\$31,351,040	\$684.60	3,463	\$30,483,637	\$677.13
BOWIE	41,791	\$381,444,965	\$702.11	37,622	\$319,423,245	\$653.11
BRAZORIA	102,355	\$1,417,547,047	\$1,065.33	101,890	\$1,410,657,461	\$1,064.99
BRAZOS	99,015	\$933,546,814	\$725.25	98,303	\$920,457,924	\$720.27
BREWSTER	3,613	\$34,350,570	\$731.28	3,336	\$28,671,260	\$661.05
BRISCOE	309	\$2,317,540	\$576.93	298	\$2,193,343	\$566.17
BROOKS	2,408	\$23,810,230	\$760.61	2,090	\$15,376,884	\$565.86
BROWN	15,765	\$135,058,971	\$658.99	15,640	\$133,295,880	\$655.61
BURLESON	3,943	\$39,931,950	\$778.96	3,893	\$39,322,968	\$777.00
BURNET	13,089	\$127,364,315	\$748.53	13,014	\$126,312,203	\$746.62
CALDWELL	7,976	\$68,792,152	\$663.48	7,922	\$68,085,566	\$661.14
CALHOUN	11,157	\$167,871,622	\$1,157.37	11,122	\$167,480,015	\$1,158.34
CALLAHAN	2,110	\$18,400,010	\$670.80	2,067	\$17,740,205	\$660.20
CAMERON	136,083	\$1,046,373,563	\$591.48	132,883	\$971,166,628	\$562.19
CAMP	3,856	\$38,017,044	\$758.33	3,828	\$37,686,861	\$757.31
CARSON	4,639	\$86,713,207	\$1,437.97	4,622	\$86,524,630	\$1,440.01
CASS	7,311	\$66,365,790	\$698.30	7,247	\$65,726,975	\$697.66
CASTRO	2,568	\$21,668,536	\$649.15	2,547	\$21,434,359	\$647.43
CHAMBERS	14,003	\$203,626,871	\$1,118.62	13,948	\$202,694,510	\$1,117.86
CHEROKEE	14,680	\$121,706,761	\$637.74	14,610	\$120,897,194	\$636.54
CHILDRESS	2,426	\$23,980,078	\$760.46	2,405	\$23,761,482	\$759.90
CLAY	1,315	\$10,958,800	\$641.05	1,294	\$10,699,124	\$636.02
COCHRAN	699	\$6,625,256	\$729.44	686	\$6,515,831	\$730.28
COKE	672	\$5,847,200	\$668.99	660	\$5,727,090	\$667.83
COLEMAN	2,042	\$15,212,588	\$572.97	2,003	\$14,860,294	\$570.69
COLLIN	369,869	\$6,119,046,723	\$1,272.60	368,178	\$6,085,291,186	\$1,271.39
COLLINGSWORTH	860	\$8,427,985	\$754.14	846	\$8,252,415	\$750.36
COLORADO	6,732	\$64,619,940	\$738.42	6,683	\$64,051,916	\$737.25
COMAL	48,590	\$529,768,432	\$838.68	48,409	\$526,876,976	\$837.22
COMANCHE	3,525	\$27,773,628	\$606.02	3,481	\$27,302,604	\$603.27

\*AWW = Average Weekly Wage

### Table 3. Covered Employment and Wages for All Industries

First Quarter 2016

County	Total (Including Federal)			Total (Excluding Federal)		
	Employment	Wages	AWW*	Employment	Wages	AWW*
CONCHO	860	\$7,869,198	\$703.59	847	\$7,453,245	\$676.89
COOKE	14,381	\$147,004,920	\$786.32	14,322	\$146,293,875	\$785.72
CORYELL	15,263	\$139,832,714	\$704.73	15,097	\$137,727,629	\$701.74
COTTLE	355	\$3,283,040	\$710.72	344	\$3,164,437	\$707.61
CRANE	1,329	\$18,615,297	\$1,077.46	1,323	\$18,557,591	\$1,078.99
CROCKETT	1,492	\$13,826,305	\$712.84	1,489	\$13,767,594	\$711.25
CROSBY	1,368	\$12,236,845	\$688.08	1,350	\$12,011,153	\$684.40
CULBERSON	1,189	\$11,238,775	\$727.10	1,103	\$9,378,577	\$653.86
DALLAM	4,319	\$44,557,553	\$793.65	4,299	\$44,339,801	\$793.44
DALLAS	1,610,978	\$27,043,993,481	\$1,291.33	1,585,873	\$26,512,769,245	\$1,286.01
DAWSON	4,188	\$38,288,498	\$703.32	4,115	\$37,603,042	\$702.87
DEAF SMITH	7,530	\$70,708,891	\$722.33	7,479	\$69,991,019	\$719.87
DELTA	1,352	\$6,800,387	\$387.01	1,333	\$6,637,048	\$383.10
DENTON	221,635	\$2,665,255,869	\$925.03	220,026	\$2,634,134,408	\$920.92
DEWITT	7,367	\$74,692,144	\$779.87	7,336	\$74,298,537	\$779.07
DICKENS	445	\$3,654,855	\$632.25	433	\$3,559,432	\$632.34
DIMMIT	5,696	\$66,296,602	\$895.32	5,426	\$59,195,140	\$839.14
DONLEY	996	\$7,073,857	\$546.51	981	\$6,905,164	\$541.27
DUVAL	3,185	\$29,826,910	\$720.37	3,068	\$26,586,772	\$666.67
EASTLAND	6,639	\$65,648,037	\$760.63	6,592	\$65,106,764	\$759.78
ECTOR	68,167	\$862,367,555	\$973.14	67,980	\$859,677,356	\$972.78
EDWARDS	368	\$2,905,971	\$607.99	347	\$2,447,412	\$542.54
EL PASO	291,782	\$2,621,681,162	\$691.16	279,415	\$2,383,104,284	\$656.07
ELLIS	47,461	\$481,248,432	\$780.00	47,240	\$478,126,759	\$778.56
ERATH	16,104	\$129,506,157	\$618.62	16,031	\$128,503,657	\$616.62
FALLS	3,123	\$26,813,873	\$660.53	3,079	\$26,342,737	\$658.20
FANNIN	7,212	\$66,544,534	\$709.80	6,516	\$54,461,909	\$642.97
FAYETTE	9,165	\$82,886,831	\$695.68	9,098	\$82,141,034	\$694.50
FISHER	947	\$8,811,893	\$716.03	930	\$8,652,192	\$715.65
FLOYD	1,468	\$12,071,678	\$632.70	1,439	\$11,774,753	\$629.28
FOARD	302	\$2,098,801	\$535.18	292	\$1,993,180	\$525.67
FORT BEND	170,500	\$2,176,514,389	\$981.96	169,790	\$2,162,951,206	\$979.92
FRANKLIN	2,993	\$26,018,668	\$668.63	2,977	\$25,823,141	\$667.32
FREESTONE	5,061	\$58,480,592	\$888.80	5,024	\$58,103,562	\$889.63
FRIO	6,331	\$66,987,903	\$813.96	6,192	\$63,729,902	\$791.76
GAINES	6,068	\$75,034,378	\$951.20	6,043	\$74,700,617	\$950.94
GALVESTON	104,348	\$1,247,931,493	\$919.95	103,458	\$1,229,214,757	\$913.95
GARZA	1,793	\$16,380,379	\$702.75	1,781	\$16,213,987	\$700.43
GILLESPIE	10,149	\$86,518,424	\$655.78	10,099	\$85,907,003	\$654.32
GLASSCOCK	536	\$6,539,728	\$937.95	530	\$6,471,833	\$939.31
GOLIAD	1,283	\$11,547,767	\$692.53	1,267	\$11,400,209	\$692.14
GONZALES	7,012	\$67,555,409	\$741.06	6,951	\$66,693,587	\$738.06
GRAY	7,866	\$91,369,325	\$893.48	7,823	\$90,836,924	\$893.19
GRAYSON	44,100	\$442,274,631	\$771.46	43,771	\$437,056,814	\$768.08
GREGG	74,895	\$803,859,562	\$825.62	74,543	\$798,022,392	\$823.50
GRIMES	7,182	\$79,435,562	\$850.76	7,135	\$78,871,160	\$850.28
GUADALUPE	37,226	\$364,590,451	\$753.38	37,020	\$361,499,853	\$751.16

\*AWW = Average Weekly Wage

**Table 3. Covered Employment and Wages for All Industries**  
**First Quarter 2016**

County	Total (Including Federal)			Total (Excluding Federal)		
	Employment	Wages	AWW*	Employment	Wages	AWW*
HALE	11,604	\$97,363,864	\$645.41	11,530	\$96,403,241	\$643.14
HALL	819	\$6,061,456	\$569.54	802	\$5,884,394	\$564.40
HAMILTON	2,455	\$19,690,094	\$616.87	2,425	\$19,364,105	\$614.33
HANSFORD	2,141	\$31,804,364	\$1,142.86	2,125	\$31,598,845	\$1,143.85
HARDEMAN	1,128	\$9,406,560	\$641.28	1,112	\$9,220,914	\$637.86
HARDIN	12,529	\$125,388,285	\$769.85	12,458	\$124,434,215	\$768.35
HARRIS	2,256,393	\$40,532,102,843	\$1,381.79	2,231,982	\$39,959,783,952	\$1,377.18
HARRISON	23,077	\$275,656,064	\$918.86	22,958	\$274,049,214	\$918.22
HARTLEY	2,401	\$21,749,154	\$696.80	2,395	\$21,690,131	\$696.74
HASKELL	1,671	\$12,756,455	\$587.23	1,646	\$12,466,718	\$582.73
HAYS	61,906	\$565,246,565	\$702.36	61,688	\$562,189,699	\$701.03
HEMPHILL	1,973	\$30,485,887	\$1,188.58	1,963	\$30,399,706	\$1,191.26
HENDERSON	16,187	\$131,579,294	\$625.30	16,102	\$130,566,362	\$623.73
HIDALGO	248,150	\$1,981,188,399	\$614.14	244,011	\$1,889,261,891	\$595.58
HILL	9,535	\$89,307,397	\$720.48	9,419	\$88,275,103	\$720.92
HOCKLEY	9,703	\$105,881,687	\$839.43	9,663	\$105,394,958	\$839.03
HOOD	15,548	\$152,148,827	\$752.75	15,453	\$151,007,988	\$751.70
HOPKINS	12,533	\$110,573,669	\$678.68	12,463	\$109,739,971	\$677.33
HOUSTON	6,257	\$76,206,185	\$936.92	6,186	\$75,306,801	\$936.44
HOWARD	12,560	\$136,976,830	\$838.91	11,625	\$119,283,363	\$789.30
HUDSPETH	1,157	\$15,485,142	\$1,029.83	840	\$6,698,338	\$613.16
HUNT	28,882	\$333,294,783	\$887.67	28,629	\$329,347,600	\$884.93
HUTCHINSON	8,800	\$141,052,693	\$1,232.98	8,735	\$140,089,654	\$1,233.72
IRION	965	\$16,423,203	\$1,309.60	962	\$16,399,733	\$1,311.80
JACK	3,063	\$35,172,454	\$883.31	3,044	\$34,974,112	\$883.81
JACKSON	5,430	\$54,841,500	\$776.90	5,401	\$54,526,467	\$776.63
JASPER	9,864	\$91,063,017	\$710.12	9,792	\$89,909,355	\$706.33
JEFF DAVIS	943	\$7,184,028	\$585.81	922	\$6,950,041	\$579.85
JEFFERSON	122,586	\$1,726,319,863	\$1,083.27	120,790	\$1,692,914,469	\$1,078.10
JIM HOGG	1,711	\$17,394,814	\$782.19	1,477	\$10,783,251	\$561.60
JIM WELLS	16,703	\$166,402,061	\$766.35	16,608	\$165,204,192	\$765.17
JOHNSON	44,000	\$430,065,796	\$751.86	43,762	\$426,858,568	\$750.32
JONES	3,014	\$26,567,059	\$678.12	2,962	\$25,891,613	\$672.33
KARNES	5,600	\$74,919,898	\$1,029.12	5,535	\$73,699,446	\$1,024.31
KAUFMAN	29,194	\$280,612,909	\$739.39	29,020	\$278,557,756	\$738.36
KENDALL	14,068	\$158,375,690	\$865.97	14,014	\$157,678,577	\$865.50
KENEDY	499	\$6,633,569	\$1,023.28	498	\$6,628,445	\$1,024.54
KENT	270	\$2,498,316	\$710.89	264	\$2,400,621	\$700.37
KERR	17,493	\$168,148,569	\$739.41	17,029	\$159,985,298	\$722.67
KIMBLE	1,279	\$10,450,679	\$628.70	1,265	\$10,279,093	\$625.06
KING	71	\$794,374	\$864.70	69	\$772,521	\$865.41
KINNEY	788	\$8,747,545	\$853.92	644	\$4,623,975	\$552.31
KLEBERG	12,255	\$106,881,389	\$670.86	11,413	\$90,718,130	\$611.44
KNOX	1,161	\$11,603,201	\$769.00	1,132	\$11,267,563	\$765.44
LA SALLE	3,041	\$42,241,995	\$1,068.41	2,933	\$38,851,655	\$1,019.07
LAMAR	20,507	\$200,012,286	\$750.27	20,365	\$198,233,953	\$748.76
LAMB	3,701	\$32,721,454	\$680.16	3,664	\$32,249,774	\$677.12

\*AWW = Average Weekly Wage

**Table 3. Covered Employment and Wages for All Industries**  
**First Quarter 2016**

County	Total (Including Federal)			Total (Excluding Federal)		
	Employment	Wages	AWW*	Employment	Wages	AWW*
LAMPASAS	4,434	\$35,424,374	\$614.56	4,399	\$34,924,632	\$610.66
LAVACA	5,481	\$46,513,403	\$652.83	5,425	\$45,876,251	\$650.46
LEE	6,976	\$74,359,457	\$819.99	6,950	\$74,104,697	\$820.16
LEON	5,066	\$58,664,205	\$890.77	5,024	\$58,209,624	\$891.31
LIBERTY	16,459	\$163,755,061	\$765.34	16,355	\$162,338,824	\$763.53
LIMESTONE	7,597	\$75,677,629	\$766.24	7,550	\$75,207,058	\$766.28
LIPSCOMB	1,254	\$11,686,027	\$717.04	1,229	\$11,322,840	\$708.70
LIVE OAK	3,759	\$51,702,515	\$1,057.93	3,509	\$47,192,710	\$1,034.44
LLANO	4,551	\$37,597,031	\$635.48	4,522	\$37,276,887	\$634.16
LOVING	51	\$577,105	\$870.44	51	\$577,105	\$870.44
LUBBOCK	134,655	\$1,329,139,241	\$759.28	133,374	\$1,307,387,138	\$754.03
LYNN	1,312	\$12,685,330	\$743.56	1,293	\$12,474,756	\$742.15
MADISON	4,838	\$41,648,740	\$662.21	4,819	\$41,424,398	\$661.19
MARION	2,003	\$14,662,601	\$563.01	1,968	\$14,156,529	\$553.43
MARTIN	1,986	\$23,721,908	\$918.97	1,973	\$23,536,825	\$917.65
MASON	1,035	\$7,937,758	\$590.14	1,022	\$7,792,080	\$586.68
MATAGORDA	10,702	\$141,295,958	\$1,015.57	10,590	\$140,007,856	\$1,017.01
MAVERICK	17,751	\$135,352,390	\$586.54	16,868	\$113,268,448	\$516.55
MCCULLOCH	2,817	\$25,859,434	\$706.05	2,790	\$25,575,991	\$705.16
MCLENNAN	108,146	\$1,130,995,105	\$804.47	105,535	\$1,089,584,765	\$794.18
MCMULLEN	652	\$8,519,290	\$1,004.59	645	\$8,468,178	\$1,010.44
MEDINA	9,262	\$78,526,656	\$652.18	9,203	\$77,714,989	\$649.56
MENARD	388	\$2,580,889	\$511.68	381	\$2,528,629	\$510.52
MIDLAND	84,025	\$1,377,107,521	\$1,260.71	83,484	\$1,367,182,075	\$1,259.74
MILAM	5,700	\$66,959,315	\$903.63	5,650	\$66,446,683	\$904.65
MILLS	1,277	\$10,287,544	\$619.69	1,264	\$10,156,887	\$618.28
MITCHELL	2,152	\$23,712,011	\$847.58	2,131	\$23,478,227	\$847.63
MONTAGUE	4,828	\$43,678,122	\$695.96	4,779	\$43,128,951	\$694.25
MONTGOMERY	166,508	\$2,217,757,489	\$1,024.55	165,620	\$2,202,986,445	\$1,023.19
MOORE	10,329	\$111,860,412	\$833.03	10,260	\$110,807,021	\$830.79
MORRIS	3,719	\$37,595,364	\$777.55	3,691	\$37,310,059	\$777.64
MOTLEY	319	\$2,152,686	\$518.55	307	\$2,017,828	\$505.59
NACOGDOCHES	22,061	\$192,176,555	\$670.10	21,909	\$190,128,982	\$667.54
NAVARRO	15,961	\$136,736,271	\$658.98	15,865	\$135,562,257	\$657.27
NEWTON	1,460	\$10,578,187	\$557.33	1,439	\$10,381,665	\$555.09
NOLAN	5,913	\$59,548,046	\$774.63	5,872	\$59,054,181	\$773.56
NUECES	158,039	\$1,742,683,944	\$848.23	152,313	\$1,641,159,129	\$828.84
OCHILTREE	4,756	\$60,760,496	\$982.67	4,738	\$60,546,814	\$983.00
OLDHAM	1,154	\$12,635,596	\$842.50	1,147	\$12,581,988	\$843.81
ORANGE	22,221	\$263,663,938	\$912.75	22,121	\$262,305,564	\$912.12
PALO PINTO	8,496	\$85,770,603	\$776.60	8,437	\$85,016,248	\$775.09
PANOLA	8,753	\$89,209,817	\$784.02	8,687	\$88,377,462	\$782.58
PARKER	31,217	\$312,809,199	\$770.80	31,041	\$310,390,115	\$769.19
PARMER	5,651	\$48,963,568	\$666.55	5,581	\$47,846,655	\$659.47
PECOS	5,600	\$61,226,410	\$840.97	5,549	\$60,279,655	\$835.63
POLK	10,736	\$95,635,630	\$685.23	10,659	\$94,733,399	\$683.64
POTTER	78,399	\$802,372,622	\$787.27	76,446	\$764,495,474	\$769.26

\*AWW = Average Weekly Wage

**Table 3. Covered Employment and Wages for All Industries**  
**First Quarter 2016**

County	Tctal (Including Federal)			Total (Excluding Federal)		
	Employment	Wages	AWW*	Employment	Wages	AWW*
PRESIDIO	2,172	\$21,326,915	\$755.19	1,867	\$13,769,958	\$567.34
RAINS	1,900	\$13,203,883	\$534.66	1,882	\$13,006,822	\$531.72
RANDALL	29,824	\$315,552,428	\$813.88	29,647	\$312,876,857	\$811.79
REAGAN	1,725	\$20,148,873	\$898.67	1,714	\$20,017,520	\$898.37
REAL	725	\$4,485,740	\$475.72	720	\$4,434,863	\$473.59
RED RIVER	2,488	\$18,758,160	\$579.96	2,451	\$18,379,560	\$576.83
REEVES	4,427	\$44,995,152	\$781.83	4,360	\$43,892,921	\$774.40
REFUGIO	2,251	\$20,318,301	\$694.23	2,220	\$19,896,959	\$689.43
ROBERTS	263	\$2,344,291	\$685.67	258	\$2,288,381	\$682.28
ROBERTSON	3,826	\$42,133,941	\$847.19	3,791	\$41,699,591	\$846.20
ROCKWALL	27,192	\$264,954,217	\$749.53	27,084	\$263,262,335	\$747.71
RUNNELS	2,859	\$23,295,958	\$626.79	2,820	\$22,807,060	\$622.12
RUSK	13,218	\$138,055,178	\$803.40	13,152	\$137,282,170	\$802.95
SABINE	2,185	\$19,305,822	\$679.66	2,140	\$18,735,503	\$673.56
SAN AUGUSTINE	1,570	\$13,572,277	\$664.84	1,552	\$13,400,511	\$664.04
SAN JACINTO	2,089	\$16,330,682	\$601.44	2,063	\$16,060,760	\$598.95
SAN PATRICIO	18,614	\$204,248,753	\$844.05	18,525	\$203,063,781	\$843.19
SAN SABA	1,614	\$13,138,262	\$626.04	1,594	\$12,949,064	\$624.89
SCHLEICHER	894	\$10,121,792	\$870.92	880	\$9,946,433	\$869.11
SCURRY	7,411	\$92,419,971	\$959.24	7,373	\$91,981,635	\$959.61
SHACKELFORD	1,294	\$13,997,695	\$832.32	1,281	\$13,833,449	\$830.69
SHELBY	8,233	\$71,025,865	\$663.61	8,159	\$70,139,620	\$661.30
SHERMAN	1,022	\$9,661,944	\$726.99	1,013	\$9,548,285	\$724.82
SMITH	100,387	\$1,035,624,661	\$793.57	99,756	\$1,024,783,337	\$790.23
SOMERVELL	3,835	\$61,366,950	\$1,230.80	3,823	\$61,180,193	\$1,231.01
STARR	15,442	\$114,345,044	\$569.59	14,686	\$95,823,705	\$501.90
STEPHENS	3,122	\$26,828,892	\$660.97	3,105	\$26,627,409	\$659.59
STERLING	615	\$7,278,081	\$909.84	611	\$7,217,912	\$909.21
STONEWALL	503	\$4,208,546	\$643.18	489	\$4,073,853	\$640.41
SUTTON	1,921	\$31,106,917	\$1,245.62	1,913	\$31,023,526	\$1,247.48
SWISHER	1,839	\$15,293,142	\$639.69	1,817	\$14,989,616	\$634.47
TARRANT	834,504	\$10,835,463,754	\$998.79	820,269	\$10,527,331,345	\$987.23
TAYLOR	60,196	\$557,316,605	\$712.18	59,076	\$543,573,360	\$707.78
TERRELL	282	\$2,978,606	\$812.49	231	\$1,566,719	\$521.72
TERRY	3,669	\$35,069,115	\$735.18	3,646	\$34,780,785	\$733.87
THROCKMORTON	474	\$4,122,564	\$669.50	467	\$4,027,594	\$662.94
TITUS	15,563	\$138,333,634	\$683.74	15,463	\$136,909,614	\$681.06
TOM GREEN	46,593	\$451,240,749	\$744.98	45,424	\$435,956,709	\$738.26
TRAVIS	689,285	\$10,490,410,006	\$1,170.71	678,110	\$10,308,644,896	\$1,169.39
TRINITY	2,310	\$18,403,292	\$612.74	2,289	\$18,190,424	\$611.21
TYLER	3,809	\$32,236,418	\$651.07	3,764	\$31,697,048	\$647.72
UPSHUR	6,547	\$55,928,119	\$657.12	6,489	\$55,249,246	\$654.91
UPTON	1,571	\$25,739,699	\$1,260.60	1,566	\$25,667,852	\$1,260.82
UVALDE	9,711	\$77,904,422	\$617.08	9,495	\$72,479,175	\$587.18
VAL VERDE	17,117	\$151,140,154	\$679.23	15,005	\$112,712,538	\$577.81
VAN ZANDT	10,215	\$81,753,443	\$615.64	10,128	\$80,764,415	\$613.41
VICTORIA	39,620	\$419,545,636	\$814.56	39,425	\$416,606,115	\$812.85

\*AWW = Average Weekly Wage

### Table 3. Covered Employment and Wages for All Industries

First Quarter 2016

County	Total (Including Federal)			Total (Excluding Federal)		
	Employment	Wages	AWW*	Employment	Wages	AWW*
WALKER	24,043	\$227,051,008	\$726.42	23,915	\$224,963,529	\$723.61
WALLER	15,900	\$165,899,637	\$802.61	15,843	\$165,182,868	\$802.04
WARD	4,328	\$56,340,539	\$1,001.36	4,314	\$56,154,300	\$1,001.21
WASHINGTON	14,575	\$133,089,294	\$702.43	14,500	\$132,006,354	\$700.30
WEBB	96,982	\$818,115,797	\$648.90	93,781	\$736,495,021	\$604.10
WHARTON	15,247	\$134,288,116	\$677.49	15,165	\$133,223,272	\$675.75
WHEELER	2,244	\$21,094,715	\$723.01	2,220	\$20,888,802	\$723.80
WICHITA	53,069	\$496,878,496	\$720.22	51,223	\$475,308,665	\$713.79
WILBARGER	5,925	\$56,484,703	\$733.33	5,889	\$55,973,276	\$731.17
WILLACY	3,526	\$28,038,946	\$611.64	3,496	\$27,679,869	\$609.10
WILLIAMSON	153,364	\$2,012,767,924	\$1,009.55	152,696	\$2,002,409,407	\$1,008.74
WILSON	7,667	\$65,000,610	\$652.12	7,585	\$64,098,788	\$650.03
WINKLER	2,504	\$34,833,673	\$1,069.95	2,496	\$34,731,292	\$1,070.51
WISE	19,290	\$202,717,313	\$808.39	19,174	\$201,213,653	\$807.24
WOOD	9,655	\$84,772,976	\$675.40	9,562	\$83,692,401	\$673.25
YOAKUM	3,588	\$49,730,691	\$1,066.18	3,574	\$49,534,947	\$1,066.14
YOUNG	6,782	\$67,314,600	\$763.54	6,744	\$66,869,522	\$762.76
ZAPATA	3,468	\$39,503,807	\$876.14	3,337	\$36,202,273	\$834.52
ZAVALA	2,687	\$18,564,998	\$531.54	2,677	\$18,456,349	\$530.27

\*AWW = Average Weekly Wage





*Another quality product from*  
**Texas Workforce Commission**  
**Labor Market and Career Information**

101 East 15th Street, Room 0252  
Austin, Texas 78778-0001  
1-866-938-4444  
(512) 936-3278  
FAX: (512) 936-3208  
[www.lmci.state.tx.us](http://www.lmci.state.tx.us)

Equal Opportunity Employer/Program  
Auxiliary aids and services are available upon request to individuals with disabilities.  
Relay Texas: 800-735-2989 (TTY) and 711 (Voice)

Copies of this publication (9/2016) have been distributed in compliance with the State Depository Law, and are available for public use through the Texas State Publication Depository Program at the Texas State Library and other state depository libraries.  
<http://www.texasworkforce.org>