

TEXAS OFFICIAL TRAVEL MAP

The Texas Official Travel Map is published annually by the Texas Department of Transportation to assist travelers in safely exploring the diversity of interesting places and landscapes that Texas has to offer.

Because of limited space, some smaller communities, farm and ranch roads, and streams or rivers are omitted. Villages at highway junctions and county seats are included, as well as roads connecting arterial highways or leading to communities and recreational areas.

On the back side of the map, the insets are not intended to be detailed city maps but to aid motorists traveling through metropolitan areas. The insets also show satellite cities and towns around metropolitan areas that cannot be fully identified on the main map.

The legend at the lower right corner of this side of the map identifies the various symbols and design characteristics on which this map is based. The grid to the right provides a convenient means of estimating distances between certain Texas cities.

To convert miles to kilometers, multiply miles X 1.609.
Example: 150 miles X 1.609 = 241.35 km.

INFORMATION YOU SHOULD KNOW

HIGHWAY SAFETY

You hold the key to driving safely. Just follow these simple steps:

- Pay attention.
- Buckle seatbelts.
- Drive now, last later.
- Obey Move Over/Slow Down law.
- Lull bars for passing only.
- Never drink and drive.
- Follow all traffic laws.

Learn more about Texas travel, driving laws and highway safety at www.tdot.gov/travel.html.

TEXAS DEPT. OF PUBLIC SAFETY

Call 800/625-6585 if you need roadside assistance. You also may report hazardous road conditions, suspicious activity at a rest area and intoxicated drivers. Customers of the wireless companies of ALLTEL, AT&T, Nextel, Sprint, T-Mobile, Verizon and US Cellular can dial "99" ("911") for assistance.

COUNTIES (Grid references are for county seats)

Anderson	L20	Cherokee	C10-11	DeWitt	D11	Harrison	H18	Jefferson	J18	Madison	M17	Reel	R18	Rockwall	R18	Waller	W18
Andrew	L20	Chilton	C10-11	Dodd	D11	Haskell	H18	Jones	J18	Marshall	M17	Reel	R18	Rockwall	R18	Waller	W18
Aransas	L19	Clay	C10	Dove	D11	Henderson	H18	Jones	J18	Marshall	M17	Reel	R18	Rockwall	R18	Waller	W18
Aransas	L19	Clay	C10	Dove	D11	Henderson	H18	Jones	J18	Marshall	M17	Reel	R18	Rockwall	R18	Waller	W18

CITIES AND TOWNS INDEX

A more recent address from the Texas State Data Center at www.texas.gov is preferred.

Regulations followed by * are based on postal estimates.

NOTE: Two grid letters (AA) indicate position on city streets.

COUNTY SEATS shown in capital letters.

Abilene	130	Abilene	130	Abilene	130	Abilene	130	Abilene	130	Abilene	130	Abilene	130	Abilene	130	Abilene	130
Abilene	130	Abilene	130	Abilene	130	Abilene	130	Abilene	130	Abilene	130	Abilene	130	Abilene	130	Abilene	130

STATE PARKS AND HISTORIC SITES

PARK NAME	NEAR	GRID	PARK NAME	NEAR	GRID	PARK NAME	NEAR	GRID
1. Adkins	Buffalo Gap	K13	36. Fort Boy	Anderson	P20	74. Maguffin House	El Paso	L1, Q20
2. Adkins	Adkins	K16	37. Fort Boy	Anderson	P20	75. Martin Creek Lake	Talton	N23
3. Adams	Adams	M22	38. Fort Lancaster	Odessa	O10	76. Martin Creek Lake	Talton	N23
4. Adkins	Adkins	K16	39. Fort Lancaster	Odessa	O10	77. Matagorda Island WMA	Port O'Connor	U19
5. Adkins	Adkins	K16	40. Fort Lancaster	Odessa	O10	78. Matagorda Island WMA	Port O'Connor	U19

NATIONAL FORESTS AND GRASSLANDS

NOTE: Private landholdings exist within the boundaries of national forests and grasslands in Texas. Detailed ownership maps may be purchased from the USDA Forest Service, 2221 N. Ringwood St., Lubbock, TX 79609, 936/869-8801 or at www.fs.usda.gov/office.

NAME	NEAR	GRID
Antelope NWR	Zanonia	N22, G51
Davy Crockett NFR	Kennard	M21
Saline NFR	Kennard	M23
San Marcos NFR	New Waverly	Q21
Black Kettle NFR	Harlingen	B12
Caddo NFR	Telephone	G19
Lyndon B. Johnson NFR	Deerbar	H17
McClellan Creek NFR	Pampa	C11
Rita Blanca NFR	Dalhart	B9

NATIONAL WILDLIFE REFUGES (NWR) IN TEXAS

NAME	NEAR	GRID
Albatross Point	Del Rio	R11
Aransas NWR	Aransas	Q22
Aransas NWR	Austwell	U19
Aransas NWR	Engle Lake	O19
Battonville NWR	Lago Vista	O16
Big Bend NWR	Sargent	Q22
Big Bend NWR	Umbarger	D9
Big Bend NWR	Umbarger	D9
Big Bend NWR	Umbarger	D9

CITIES AND TOWNS INDEX (Continued)

Abilene	130	Abilene	130	Abilene	130	Abilene	130	Abilene	130	Abilene	130	Abilene	130	Abilene	130	Abilene	130
Abilene	130	Abilene	130	Abilene	130	Abilene	130	Abilene	130	Abilene	130	Abilene	130	Abilene	130	Abilene	130

TRAVEL INFORMATION

Travelers may receive road condition information by visiting our website at www.drivetexas.org or by calling 800/452-4292 for 24-hour highway condition information. Travelers may also call daily from 8 a.m. to 6 p.m. Central time, to speak to a professional travel counselor for travel information and trip planning assistance.

TRAVEL INFORMATION CENTERS

Amarillo	1-410	806/335-1441
Anthony	I-40	915/886-3468
Austin	Capitol Visitor Center	512/463-8586
Denison	U.S. 69/75	903/463-2860
Galvestone	I-10	940/865-2301
Lubbock	U.S. 90/Loop 25	432/291-3340
Laredo	I-35 at U.S. 85	956/417-4728
Orange	I-30	409/883-9416
Texasarkana	I-30	903/974-2114
Valley	U.S. 77 at U.S. 83 (Harington)	956/429-4477
Waco	I-20	903/865-2547
Wichita Falls	I-44/U.S. 287, Exit 1C	940/723-7031

TOLL ROADS

Drivers should be aware that many toll roads are now using a cashless system. On these roads, if the vehicle does not contain a valid toll tag, a photo is taken of the vehicle's license plate and a bill is mailed. This bill may contain an administrative or statement fee, plus the toll. For more information, visit www.ttag.org.

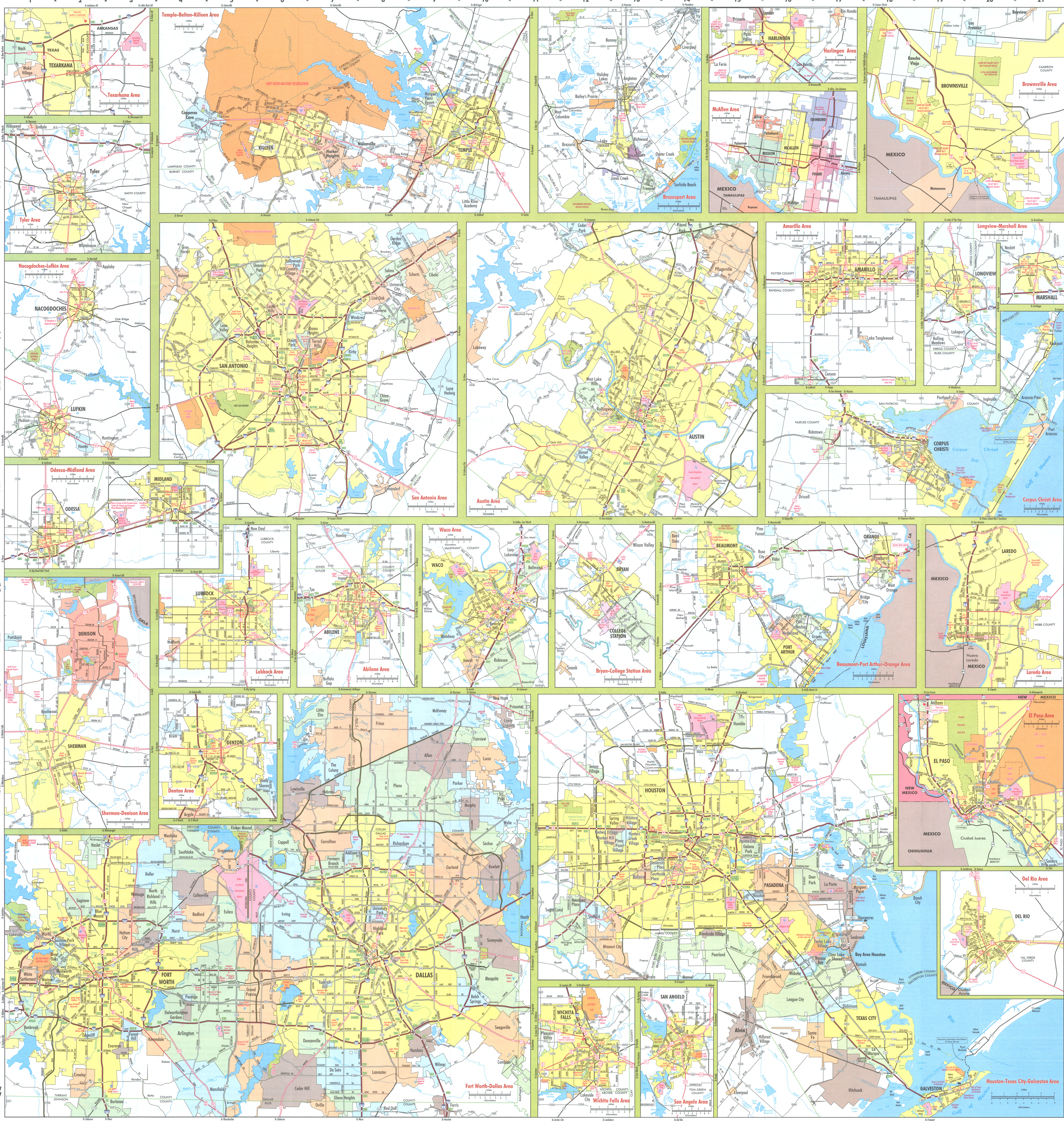
TRAIN TRAVEL

Amtrak has three Texas routes: the Heartland Flyer, Sunset Limited and Texas Eagle. For Amtrak railway information, call 800/872-7245; visit www.amtrak.com.

LEGEND

Texas Department of Transportation Official Travel Map

- Interstate Highway
- State Highway
- State Loop or Spur
- Park Road
- County Road
- Unimproved Road
- Unimproved Road on Farm or Ranch Road
- Farm or Ranch Road
- Publicly Owned Airport
- Airport with Scheduled Passenger Service
- Public Transportation
- City or Town with population over 25,000
- Cities and Towns with population over 25,000
- Population areas included in Cities and Towns Index
- County names and boundaries highlighted in green
- Interstate mile numbers shown only on arterial maps of metropolitan areas on Texas
- © 2016 TEXAS DEPARTMENT OF TRANSPORTATION



STARK
CULTURAL VENUES

400+ STARK
Indoor Venues
Available for your event
Whether you're looking for a
performing arts center, theater,
concert hall, or event space,
Stark has what you need.

Stark's La Grapes
View new food and drink
options at Stark's La Grapes
located in the heart of downtown
Austin. Stark's La Grapes is
open daily from 11am to 11pm.

Stark's Music of the
View new live music
performances at Stark's Music
of the located in the heart of
downtown Austin. Stark's Music
of the is open daily from 11am
to 11pm.

Stark's Theater
View new theater
performances at Stark's Theater
located in the heart of
downtown Austin. Stark's
Theater is open daily from 11am
to 11pm.

Experience the best in art, history, nature & theater
to Orange, Texas

10
Road Tripi

2016 OFFICIAL TRAVEL MAP
TEXAS
77,484 sq mi
A WHOLE OTHER COUNTRY

TRAVELTEXAS.COM

Governor and Cecilia Abbott

Welcome to the great state of Texas. Whether you are a visitor or a resident, I hope you take advantage of the vast and varied travel opportunities Texas offers. The seven tourism regions of Texas—Big Bend Country, Gulf Coast, Hill Country, Panhandle Plains, Piney Woods, Prairies and Lakes, and South Texas Plains—abound with diverse environmental settings for business and personal enjoyment. Enjoy your travels along the more than 80,000 miles of excellent Texas highways and byways, and wherever your purpose of destination, drive safely and help keep Texas beautiful.

Greg Abbott
Governor of Texas

TEXAS TRANSPORTATION COMMISSION

JEFF ALBETH II
Commissioner

JEFF MCELROY
Commissioner

TRAYN D. LEWIS
Chair

VICTOR WUNDERLICH
Commissioner

BRUCE RUGG, JR.
Commissioner

TEXAS...It's like a whole other country that's miles away from ordinary. Unique flavor. Breathtaking scenery. Chances to play cowboy, or art critic. No matter what kind of adventures you're looking for, you'll find them in Texas.

Explore like a local with our #TexasToDo gallery featuring trip suggestions posted by Texans and visitors who've been here before. Find the right itinerary for you with our Trip Guide and Trip Plan features. Just head to TravelTexas.com and start planning your trip today.

It's like a WHOLE OTHER COUNTRY

Discover True Texas

Subscribe to Texas Highways

- Great gateways
- Stunning photography
- Roundup of events

Just \$24.95 for a year (US subscribers) (2 monthly issues)

Order today by calling 800-839-4997 and mention source code 3703AD. International subscriptions are \$39.00.

www.texashighways.com