



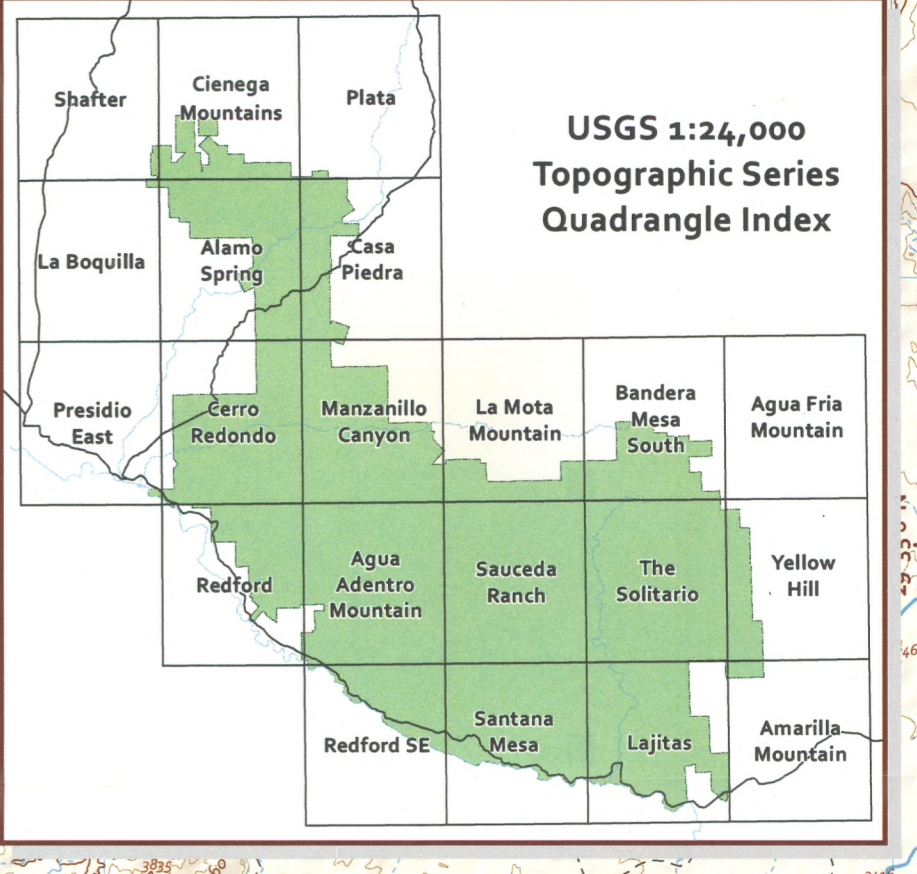
**Water Use**

Water resources are scarce in this desert environment, yet vital to all forms of life. The following regulations for human use of water help protect the water sources for all:

- Immerision/wading/soaking is permitted only at designated locations.
- The use of soap/detergents is prohibited in springs, natural pools, or flowing waterways.
- Rinsing dishes or other equipment directly into natural water sources is prohibited.
- Only biodegradable soaps may be used, and they must be used at least 100 feet away from water sources.
- All campsites, unless designated by the TPWD, must be at least 300 feet away from water sources (including seeps, potholes, springs, and streams).
- Saddle and pack stock must be staked at least 300 feet from water sources.
- Saddle and pack stock are not permitted to enter springs and seeps. Water must be brought to them.
- A water source may not be emptied or depleted for human use.
- All water sources, on BBRSP whether natural or man-made should be considered non-potable.

**Backcountry Campsite Selection Criteria**

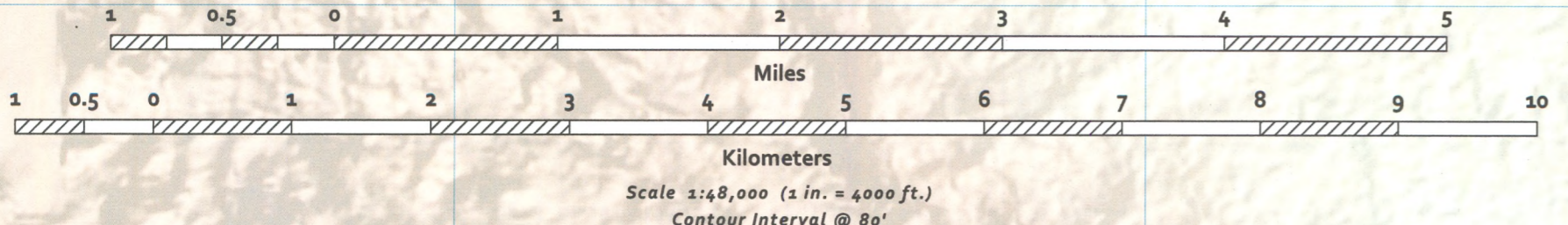
- Independent campsites may be no closer than 1/4 mile to any other existing campsite
- 300 feet from live water sources, including seeps, potholes, springs, and streams
- 300 feet away from all prehistoric or historic cultural sites, including alcoves, pictographs & petroglyphs, identifiable surface scatters of lithics or ceramics, partial or complete structures or ruins
- At least 1/4 mile from trailheads or roads
- Within the zone for which the permit was issued
- Selected on previously disturbed areas, surfaces without microbiotic soil crusts, and in visually non-prominent locations



**- Fresno Canyon -**

Mag. Declination 7° 42' E  
 UTM Grid - UTM Zone 13 North, NAD83  
 DMS Grid - Geographic, NAD83

<b>Camping &amp; Trailheads</b>	<b>Points of Interest</b>	<b>Miscellaneous</b>	<b>Transportation</b>	<b>Boundary</b>
Campground	Ranger Station	Movie Set	2WD High Clearance	Park Boundary
Campsite	Restrooms	Pila - Tank	4WD High Clearance	Private Lands
Equestrian Campsite	Privy	Spring - Tanques	4-Wheel Drive	Masada Ridge
Trailhead	Showers	Dam	Unmaintained	Wilderness
River Access	Food	Prospect - Mine	Graded	Survey Monuments
Elevation	Lodging	Locked Gate	Highway	County Line
Index Contours @ 400'	Scenic Overlook	Tower	Road Trace	Trails
Contours @ 80'	Park Residence		Runway	Routes
Spot Elevations			Railroad	Trails



**Mobile Phones**

Cell phone coverage is random and unreliable throughout the park. DO NOT depend on your cell phone to call for help in emergency situations.

**Park Information**

Big Bend Ranch State Park  
 HCR 67, Box 33  
 Marfa, TX 79843  
 (432) 358-4444  
 After Hours Emergency  
 (432) 229-4933

Barton Warnock Visitor Center  
 Lajitas, TX 79852  
 (432) 424-3327

Fort Leaton State Historic Site  
 Presidio, TX 79845  
 (432) 229-3633

www.tpwd.state.tx.us

**Exploration Map**

**Big Bend Ranch SP**

Texas State Parks  
 - Winter 2013 -

TEXAS PARKS & WILDLIFE

Life's better outside.

PWD MP P4501-152K

Big Bend National Park

Definitions

**Trails\*** – A travel way defined by a natural surface path or series of rock cairns and/or other identifiable markings which can be navigated on foot, stock or MTB bicycle as designated. All trails are non-motorized use only.

**Routes\*** – A general course of travel that can be navigated on foot, stock or MTB bicycle. A route may follow a road trace, stream bed or the path of least resistance cross-country. Less well marked than trails – usually at intersections. All routes are non-motorized use only.

\* Visitors should check with park staff prior to traveling any trails or routes to determine conditions or appropriateness of use, especially equestrian or mountain bike users.

**Road Trace** – An unmaintained remnant of a previous road or vehicular travel way in the park. No vehicular access is permitted.

**Graded (2WD)** – Graded, unpaved road passable by standard street legal vehicles when driven responsibly. Main park road and selected campsite and road spurs. Regularly maintained.

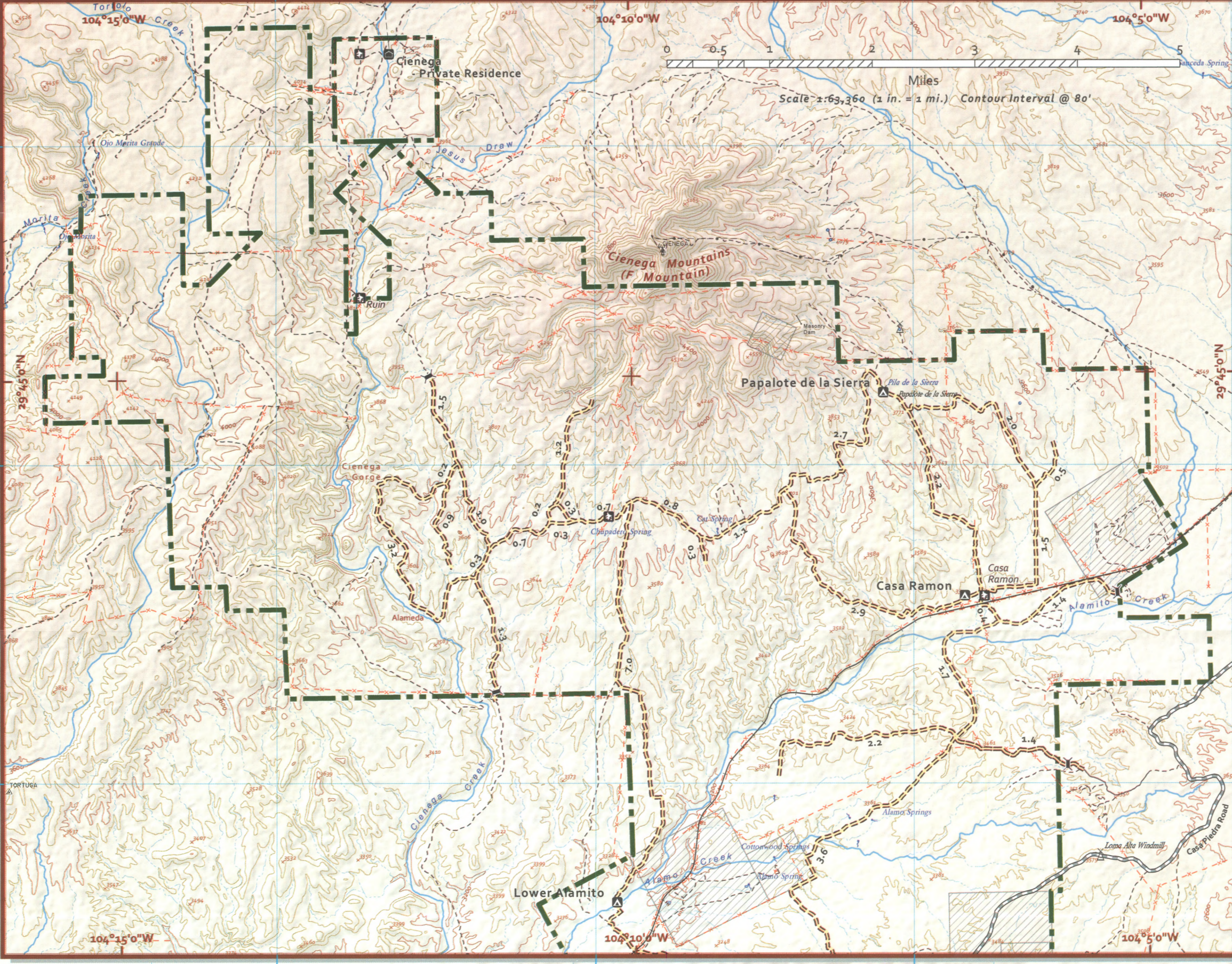
**2WD High Clearance (2 Wheel Drive High Clearance)** – Unpaved road normally passable by standard street legal vehicles with high ground clearance. Clearance necessitated by typical road or route conditions (obstacles, steep dips, etc.). Not maintained continuously.

**4-Wheel Drive (4WD, also may include HC All Wheel Drive)** – Primitive roads similar to 2WDHC but requiring extra traction to accommodate steep grades, loose or soft substrates. Passage requires low-range gears occasionally. Jacks, shovels and multiple spare tires advised. Irregularly maintained at stream crossing or washouts.

**4-Wheel Drive - Unmaintained (4WD High Clearance)** – Primitive roads harsher than 4WD. Passage requires vehicles with extra traction, rigid suspension and high clearance. Four-wheel-drive required, E Load Range tires recommended. Jacks, shovels extraction gear and multiple spare tires advised. Some road building may be required.

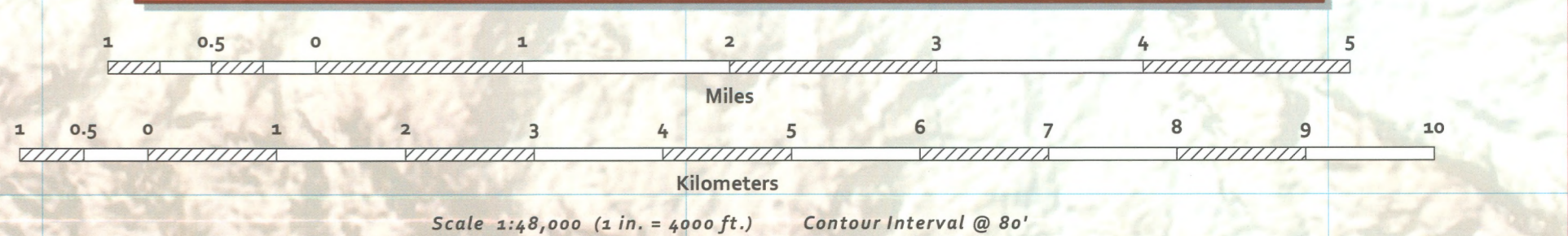


View up Tapado Canyon from Gualte Trailhead.



- Cienega & Alamito Lowlands -

- Bofecillos Highlands -



Scale 1:48,000 (1 in. = 400 ft.) Contour Interval @ 80'  
 Depicted Property Boundaries are for representation only.