

TEXAS OFFICIAL TRAVEL MAP

The Texas Official Travel Map is published annually by the Texas Department of Transportation to assist travelers in safely exploring the diversity of interesting places and landscapes that Texas has to offer.

Because of limited space, some smaller communities, farm and ranch roads, and streams or rivers are omitted. Villages at highway junctions and county seats are included, as well as roads connecting arterial highways or leading to commercial and recreational areas.

On the back side of the map, the insets are not intended to be detailed city maps but to aid motorists traveling through those metropolitan areas. The insets also show satellite cities and towns around metropolitan areas that cannot be fully identified on the main map.

The legend at the lower right corner of this side of the map identifies the various symbols and design characteristics on which this map is based. The grid to the right provides a convenient means of estimating distances between certain Texas cities.

INFORMATION YOU SHOULD KNOW

- TEXAS HIGHWAY LAWS**
 - Motor vehicle operators must maintain current liability insurance. They may also report traffic accidents, intoxicated drivers, criminal activities and other emergencies at this number.
 - All persons in a passenger vehicle, regardless of age or seating position, are required to wear a seat belt. Children up to eight years old, unless taller than 4 feet 9 inches, must ride in a child safety seat.
 - It is illegal, with certain exceptions such as parades or emergencies, to operate an open bed pickup truck, an open flatbed truck or an open flatbed trailer when children under the age of 18 are occupying the bed of the truck or trailer, regardless of the vehicle's speed.
 - Open containers of alcohol are not permitted in the passenger area of a motor vehicle.
 - Motorcycle operators and passengers must wear protective headgear that meets adopted standards. Exemptions are available for persons over age 21 with certain health insurance and training requirements.
- TEXAS DEPT. OF PUBLIC SAFETY**
 - Call 800/625-5555 if you need roadside assistance. You may also report traffic accidents, intoxicated drivers, criminal activities and other emergencies at this number.
 - Customers of the wireless companies of ALLTEL, AT&T, Nextel, Sprint, Mobile, Verizon and US Cellular can dial *999 (7377) for assistance.
- NOAA WEATHER RADIO**
 - The National Oceanic and Atmospheric Administration (NOAA) provides continuous broadcasts of the latest weather information directly from the National Weather Service.
 - For current weather information, tune to one of the NOAA radio frequencies: 162.4, 162.45, 162.475, 162.5, 162.525 or 162.55.
- ONLINE RENEWAL OF TEXAS DRIVER'S LICENSE AND VEHICLE REGISTRATION**
 - Texas citizens can go online to renew their driver's license - statewide - and vehicle registrations - in selected counties. Check out www.texasonline.com for more information.

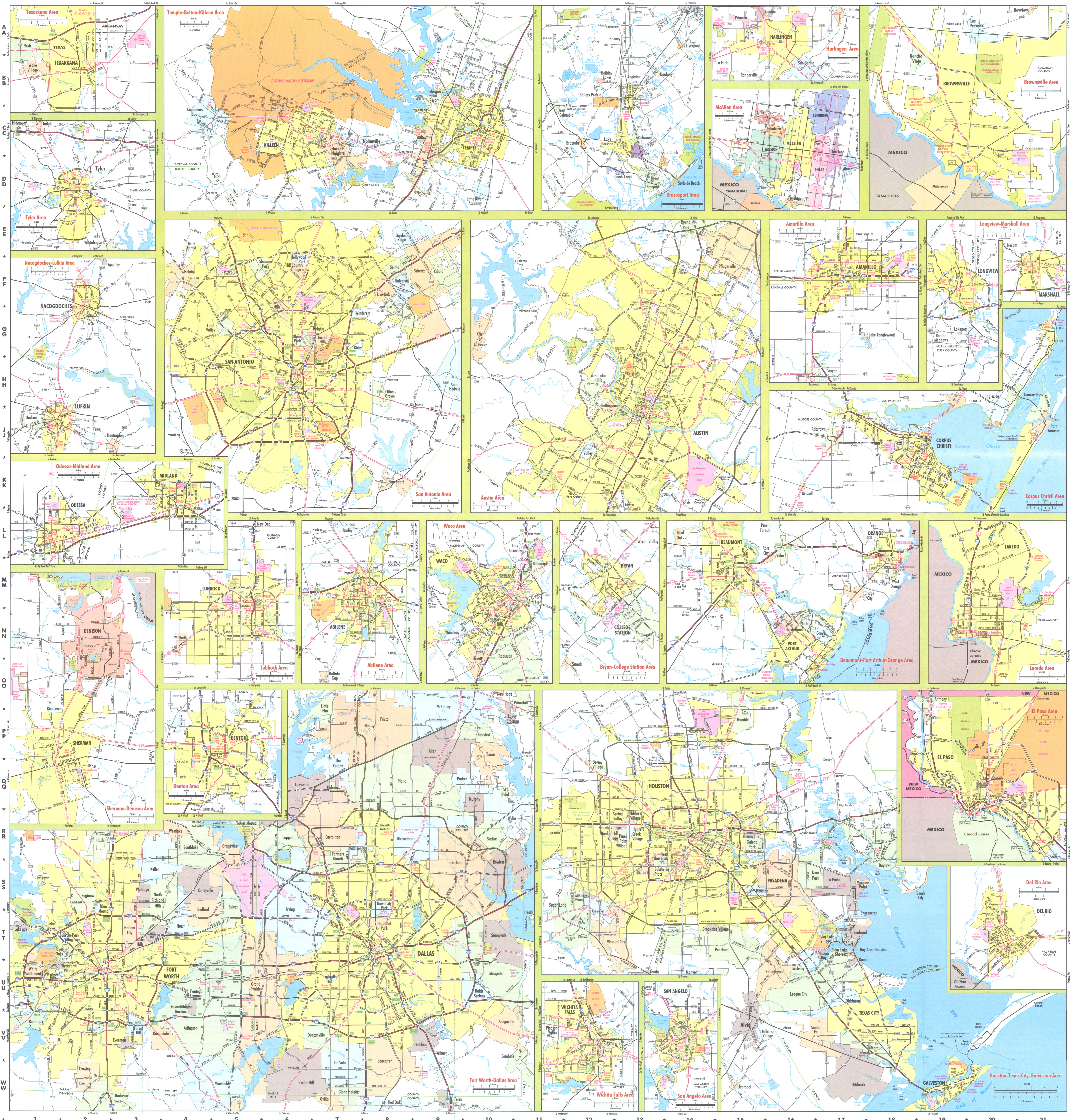
SPEED LIMITS

Pay careful attention to speed limit signs in Texas. Speed limits can range from 25 mph to 85 mph on numbered highways. Speed limits on some Texas highways, especially urban freeways, may be reduced because of their individual operating characteristics. Posted speed limits apply to cars and trucks for both day and night. Watch the signs. Watch your speedometer.

To convert miles to kilometers, multiply miles by 1.609.
Example: 150 miles X 1.609 = 241.35 km.

COUNTIES (Grid references are for county seats)

Anderson	120	Comal	C35.11	Dawson	H11	Harrison	A8.011	DeWitt	H08	Jeff Davis	C14.11	Ellis	H06	Wheeler	H08	Waller	P02.011	Willacy	H11	Woods	H11
Andrew	122	Cook	C36.11	Day	H09	Hartley	A8.011	Donley	H11	Jones	A8.011	Franklin	H07	Wharton	H11	Wilbarger	H11	Wright	H11	Yates	H11
Aransas	123	Cottle	C37.11	Dawson	H11	DeWitt	H08	DeWitt	H08	Jones	A8.011	Franklin	H07	Wharton	H11	Wilbarger	H11	Wright	H11	Yates	H11
Archer	124	Crane	C38.11	Day	H09	Hartley	A8.011	DeWitt	H08	Jones	A8.011	Franklin	H07	Wharton	H11	Wilbarger	H11	Wright	H11	Yates	H11
Armstrong	125	Eastland	C39.11	Day	H09	Hartley	A8.011	DeWitt	H08	Jones	A8.011	Franklin	H07	Wharton	H11	Wilbarger	H11	Wright	H11	Yates	H11
Atascosa	126	Ellis	H06	DeWitt	H08	Jones	A8.011	Franklin	H07	Wharton	H11	Wilbarger	H11	Wright	H11	Yates	H11
Bandera	127	Garland	C40.11	Day	H09	Hartley	A8.011	DeWitt	H08	Jones	A8.011	Franklin	H07	Wharton	H11	Wilbarger	H11	Wright	H11	Yates	H11
Bastrop	128	Harris	H01	Dallas	D01	Denton	H03	Donley	H11	Jones	A8.011	Franklin	H07	Wharton	H11	Wilbarger	H11	Wright	H11	Yates	H11
Baylor	129	Haskell	A9.011	Day	H09	Hartley	A8.011	DeWitt	H08	Jones	A8.011	Franklin	H07	Wharton	H11	Wilbarger	H11	Wright	H11	Yates	H11
Brewster	130	Hemphill	A9.011	Day	H09	Hartley	A8.011	DeWitt	H08	Jones	A8.011	Franklin	H07	Wharton	H11	Wilbarger	H11	Wright	H11	Yates	H11
Brewster	131	Howard	H04	Day	H09	Hartley	A8.011	DeWitt	H08	Jones	A8.011	Franklin	H07	Wharton	H11	Wilbarger	H11	Wright	H11	Yates	H11
Brewster	132	Jeff Davis	C14.11	Day	H09	Hartley	A8.011	DeWitt	H08	Jones	A8.011	Franklin	H07	Wharton	H11	Wilbarger	H11	Wright	H11	Yates	H11
Brewster	133	Kimble	A9.011	Day	H09	Hartley	A8.011	DeWitt	H08	Jones	A8.011	Franklin	H07	Wharton	H11	Wilbarger	H11	Wright	H11	Yates	H11
Brewster	134	Knox	A9.011	Day	H09	Hartley	A8.011	DeWitt	H08	Jones	A8.011	Franklin	H07	Wharton	H11	Wilbarger	H11	Wright	H11	Yates	H11
Brewster	135	Landrum	A9.011	Day	H09	Hartley	A8.011	DeWitt	H08	Jones	A8.011	Franklin	H07	Wharton	H11	Wilbarger	H11	Wright	H11	Yates	H11
Brewster	136	Leake	A9.011	Day	H09	Hartley	A8.011	DeWitt	H08	Jones	A8.011	Franklin	H07	Wharton	H11	Wilbarger	H11	Wright	H11	Yates	H11
Brewster	137	Leon	A9.011	Day	H09	Hartley	A8.011	DeWitt	H08	Jones	A8.011	Franklin	H07	Wharton	H11	Wilbarger	H11	Wright	H11	Yates	H11
Brewster	138	Liberty	H04	Day	H09	Hartley	A8.011	DeWitt	H08	Jones	A8.011	Franklin	H07	Wharton	H11	Wilbarger	H11	Wright	H11	Yates	H11
Brewster	139	Madison	A9.011	Day	H09	Hartley	A8.011	DeWitt	H08	Jones	A8.011	Franklin	H07	Wharton	H11	Wilbarger	H11	Wright	H11	Yates	H11
Brewster	140	Martin	A9.011	Day	H09	Hartley	A8.011	DeWitt	H08	Jones	A8.011	Franklin	H07	Wharton	H11	Wilbarger	H11	Wright	H11	Yates	H11
Brewster	141	Matagorda	A9.011	Day	H09	Hartley	A8.011	DeWitt	H08	Jones	A8.011	Franklin	H07	Wharton	H11	Wilbarger	H11	Wright	H11	Yates	H11
Brewster	142	Medina	A9.011	Day	H09	Hartley	A8.011	DeWitt	H08	Jones	A8.011	Franklin	H07	Wharton	H11	Wilbarger	H11	Wright	H11	Yates	H11
Brewster	143	Mitchell	A9.011	Day	H09	Hartley	A8.011	DeWitt	H08	Jones	A8.011	Franklin	H07	Wharton	H11	Wilbarger	H11	Wright	H11	Yates	H11
Brewster	144	Montgomery	A9.011	Day	H09	Hartley	A8.011	DeWitt	H08	Jones	A8.011	Franklin	H07	Wharton	H11	Wilbarger	H11	Wright	H11	Yates	H11
Brewster	145	Morisk	A9.011	Day	H09	Hartley	A8.011	DeWitt	H08	Jones	A8.011	Franklin	H07	Wharton	H11	Wilbarger	H11	Wright	H11	Yates	H11
Brewster	146	Murray	A9.011	Day	H09	Hartley	A8.011	DeWitt	H08	Jones	A8.011	Franklin	H07	Wharton	H11	Wilbarger	H11	Wright	H11	Yates	H11
Brewster	147	Nacogdoches	A9.011	Day	H09	Hartley	A8.011	DeWitt	H08	Jones	A8.011	Franklin	H07	Wharton	H11	Wilbarger	H11	Wright	H11	Yates	H11
Brewster	148	Nolan	A9.011	Day	H09	Hartley	A8.011	DeWitt	H08	Jones	A8.011	Franklin	H07	Wharton	H11	Wilbarger	H11	Wright	H11	Yates	H11
Brewster	149	Ochiltree	A9.011	Day	H09	Hartley	A8.011	DeWitt	H08	Jones	A8.011	Franklin	H07	Wharton	H11	Wilbarger	H11	Wright	H11	Yates	H11
Brewster	150	O'Connell	A9.011	Day	H09	Hartley	A8.011	DeWitt	H08	Jones	A8.011	Franklin	H07	Wharton	H11	Wilbarger	H11	Wright	H11	Yates	H11
Brewster	151	O'Connell	A9.011	Day	H09	Hartley	A8.011	DeWitt	H08	Jones	A8.011	Franklin	H07	Wharton	H11	Wilbarger	H11	Wright	H11	Yates	H11
Brewster	152	O'Connell	A9.011	Day	H09	Hartley	A8.011	DeWitt	H08	Jones	A8.011	Franklin	H07	Wharton	H11	Wilbarger	H11	Wright	H11	Yates	H11
Brewster	153	O'Connell	A9.011	Day	H09	Hartley	A8.011	DeWitt	H08	Jones	A8.011	Franklin	H07	Wharton	H11	Wilbarger	H11	Wright	H11	Yates	H11
Brewster	154	O'Connell	A9.011	Day	H09	Hartley	A8.011	DeWitt	H08	Jones	A8.011	Franklin	H07	Wharton	H11	Wilbarger	H11	Wright	H11	Yates	H11
Brewster	155	O'Connell	A9.011	Day	H09	Hartley	A8.011	DeWitt	H08	Jones	A8.011	Franklin	H07	Wharton	H11	Wilbarger	H11	Wright	H11	Yates	H11
Brewster	156	O'Connell	A9.011	Day	H09	Hartley	A8.011	DeWitt	H08	Jones	A8.011	Franklin	H07	Wharton	H11	Wilbarger	H11	Wright	H11	Yates	H11
Brewster	157	O'Connell	A9.011	Day	H09	Hartley	A8.011	DeWitt	H08	Jones	A8.011	Franklin	H07	Wharton	H11	Wilbarger	H11	Wright	H11	Yates	H11
Brewster	158	O'Connell	A9.011	Day	H09	Hartley	A8.011	DeWitt	H08	Jones	A8.011	Franklin	H07	Wharton	H11	Wilbarger	H11	Wright	H11	Yates	H11
Brewster	159	O'Connell	A9.011	Day	H09	Hartley	A8.011	DeWitt	H08	Jones	A8.011	Franklin	H07	Wharton	H11	Wilbarger	H11	Wright	H11	Yates	H11
Brewster	160	O'Connell	A9.011	Day	H09	Hartley	A8.011	DeWitt	H08	Jones	A8.011	Franklin	H07	Wharton	H11	Wilbarger	H11	Wright	H11	Yates	H11
Brewster	161	O'Connell	A9.011	Day	H09	Hartley	A8.011	DeWitt	H08	Jones	A8.011	Franklin	H07	Wharton	H11	Wilbarger	H11	Wright	H11	Yates	H11
Brewster	162	O'Connell	A9.011	Day	H09	Hartley	A8.011	DeWitt	H08	Jones	A8.011	Franklin	H07	Wharton	H11	Wilbarger	H11	Wright	H11	Yates	H11
Brewster	163	O'Connell	A9.011	Day	H09	Hartley	A8.011	DeWitt	H08	Jones	A8.011	Franklin	H07	Wharton	H11	Wilbarger	H11	Wright	H11	Yates	H11
Brewster	164	O'Connell	A9.011	Day	H09	Hartley	A8.011	DeWitt	H08	Jones	A8.011	Franklin	H07	Wharton	H11	Wilbarger	H11	Wright	H11	Yates	H11
Brewster	165	O'Connell	A9.011	Day	H09	Hartley	A8.011	DeWitt	H08	Jones	A8.011	Franklin	H07	Wharton	H11	Wilbarger	H11	Wright	H11	Yates	H11
Brewster	166	O'Connell	A9.011	Day	H09	Hartley	A8.011	DeWitt	H08	Jones	A8.011	Franklin	H07	Wharton	H11	Wilbarger	H11	Wright	H11	Yates	H11
Brewster	167	O'Connell	A9.011	Day	H09	Hartley	A8.011	DeWitt	H08	Jones	A8.011	Franklin	H07	Wharton	H11	Wilbarger	H11	Wright	H11	Yates	H11
Brewster	168	O'Connell	A9.011	Day	H09	Hartley	A8.011	DeWitt	H08	Jones	A8.011	Franklin	H07	Wharton	H11	Wilbarger	H11	Wright	H11	Yates	H11
Brewster	169	O'Connell	A9.011	Day	H09	Hartley	A8.011	DeWitt	H08	Jones	A8.011	Franklin	H07	Wharton	H11	Wilbarger	H11	Wright	H11	Yates	H11
Brewster	170	O'Connell	A9.011	Day	H09	Hartley	A8.011	DeWitt	H08	Jones	A8.011	Franklin	H07	Wharton	H11	Wilbarger	H11	Wright	H11	Yates	H11
Brewster	171	O'Connell	A9.011	Day	H09	Hartley	A8.011	DeWitt	H08	Jones	A8.011	Franklin	H07	Wharton	H11	Wilbarger	H11	Wright	H11	Yates	H11
Brewster	172	O'Connell	A9.011	Day	H09	Hartley	A8.011	DeWitt	H08	Jones	A8.011	Franklin	H07	Wharton	H11	Wilbarger	H11	Wright	H11	Yates	H11
Brewster	173	O'Connell	A9.011	Day	H09	Hartley	A8.011	DeWitt	H08	Jones	A8.011	Franklin	H07	Wharton	H11	Wilbarger	H11	Wright	H11	Yates	H11
Brewster	174	O'Connell	A9.011	Day	H09	Hartley	A8.011	DeWitt	H08	Jones	A8.011	Franklin	H07	Wharton	H11	Wilbarger	H11	Wright	H11	Yates	H11
Brewster	175	O'Connell	A9.011	Day	H09	Hartley	A8.011	DeWitt	H08	Jones	A8.011	Franklin	H07	Wharton	H11	Wilbarger	H11	Wright	H11	Yates	H11
Brewster	176	O'Connell	A9.011	Day	H09	Hartley	A8.011	DeWitt	H08	Jones	A8.011	Franklin	H07	Wharton	H11	Wilbarger	H11	Wright	H11	Yates	H11
Brewster	177	O'Connell	A9.011	Day	H09	Hartley	A8.011	DeWitt	H08	Jones	A8.011	Franklin	H07	Wharton	H11	Wilbarger	H11	Wright	H11	Yates	H11
Brewster	178	O'Connell	A9.011	Day	H09	Hartley	A8.011	DeWitt	H08	Jones	A8.011	Franklin	H07	Wharton	H11	Wilbarger	H11	Wright	H11	Yates	H11
Brewster	179	O'Connell	A9.011	Day	H09	Hartley	A8.011	DeWitt	H08	Jones	A8.011	Franklin	H07	Wharton	H11	Wilbarger	H11	Wright	H11	Yates	H11
Brewster	180	O'Connell	A9.011	Day	H09	Hartley	A8.011	DeWitt	H08	Jones	A8.011	Franklin	H07	Wharton	H11	Wilbarger	H11	Wright	H11	Yates	H11
Brewster	181	O'Connell	A9.011	Day	H09	Hartley	A8.011	DeWitt	H08	Jones	A8.011	Franklin	H07	Wharton	H11	Wilbarger	H11	Wright	H11	Yates	H11
Brewster	182	O'Connell	A9.011	Day	H09	Hartley	A8.011	DeWitt	H08	Jones	A8.011	Franklin	H07	Wharton	H11	Wilbarger	H11	Wright	H11	Yates	H11
Brewster	183	O'Connell	A9.011	Day	H09	Hartley	A8.011	DeWitt	H08	Jones	A8.011	Franklin	H07	Wharton	H11	Wilbarger	H11	Wright	H11	Yates	H11
Brewster	184	O'Connell	A9.011	Day	H09	Hartley	A8.011	DeWitt	H08	Jones	A8.011	Franklin	H07	Wharton	H11	Wilbarger	H11	Wright	H11	Yates	H11
Brewster	185	O'Connell	A9.011	Day	H09	Hartley	A8.011	DeWitt	H08	Jones	A8.011	Franklin	H07	Wharton	H11	Wilbarger	H11	Wright	H11	Yates	H11
Brewster	186	O'Connell	A9.011	Day	H09	Hartley	A8.011	DeWitt	H08	Jones	A8.011	Franklin	H07	Wharton	H11	Wilbarger	H11	Wright	H11	Yates	H11
Brewster	187	O'Connell	A9.011	Day	H09	Hartley	A8.011	DeWitt	H08	Jones	A8.011	Franklin	H07	Wharton	H11	Wilbarger	H11	Wright	H11	Yates	H11
Brewster	188	O'Connell	A9.011	Day	H09	Hartley	A8.011	DeWitt	H08	Jones	A8.011	Franklin	H07	Wharton	H11						



Cultural Venues
 STARK
 For more information, visit www.stark.com

409.883.1871
www.stark.com

409.883.1871
www.stark.com

409.883.1871
www.stark.com

409.883.1871
www.stark.com

409.883.1871
www.stark.com

10 EAST
 Return Home from Culture, Texas, is a
 your round-trip destination for travelers of all ages.
 877

2011 OFFICIAL TRAVEL MAP
TEXAS
 WHOLE OTHER COUNTRY

TRAVELTEX.COM

Governor and Anita Perry
 Welcome to the great state of Texas. Whether you are a visitor or a resident, I hope you take advantage of the vast and varied travel opportunities Texas offers.

TEXAS TRANSPORTATION COMMISSION

JEFF AUSTIN, Commissioner
 TED HOUSTON, JR., Chair
 BOB WOODLEY, Commissioner

WILLIAM MEDOWS, Commissioner
 PHIL WILLSON, Executive Director
 PHIL WOODS, Commissioner

HAVE A TEXAS-SIZED ADVENTURE

From dipping your toes in the warm Gulf waters to letting your inner cowboy run wild, there's an abundance of adventure waiting for you here in Texas. All it takes to plan your excursion to this whole other country is a visit to TravelTex.com. There you'll find videos, podcasts, and listings of amazing attractions and can't-miss events. You can even create a custom itinerary filled with places and things you want to enjoy while on your trip.

So go to TravelTex.com and get a head start on your vacation planning today.

TEXAS
 It's like a
 WHOLE OTHER COUNTRY

SUBSCRIBE TO TEXAS HIGHWAYS!

Great getaways
 Stunning photography
 Roundup of events

Just \$15.95*
 for a 1-year U.S. subscription (12 monthly issues)

Order today by calling
1-800-839-4997
 and mention source code A3AMAP

www.texashighways.com
 (Click on Subscribe and choose from 3 options.)

This offer expires 12/31/14 and cannot be combined with other offers. First-time U.S. subscribers only. International subscriptions are \$29.95. Call 800-839-4997.

Digital editions now available!