

TEXAS OFFICIAL TRAVEL MAP

The Texas Official Travel Map is published annually by the Texas Department of Transportation in the interest of the traveling public. Special efforts have been made in compiling data to show maximum information in the most legible manner. This map is intended to assist travelers in safely exploring the wide diversity of interesting places and landscapes that Texas has to offer.

All highway distances are listed to the nearest mile. As a rule, mileage between Texas cities is measured from a major highway intersection. In some cases, a courthouse, post office or center of the business district is used. Red mileage figures are computed along the shortest routes between red triangles.

Table of Texas counties and their seat locations. Includes a grid reference system for county seats.

INFORMATION YOU SHOULD KNOW
- Motor vehicle operators must maintain current liability insurance and be able to show proof of financial responsibility.
- All persons, regardless of age, sitting on the front seat of a vehicle, including one-on-one trucks, are required to wear a seatbelt.

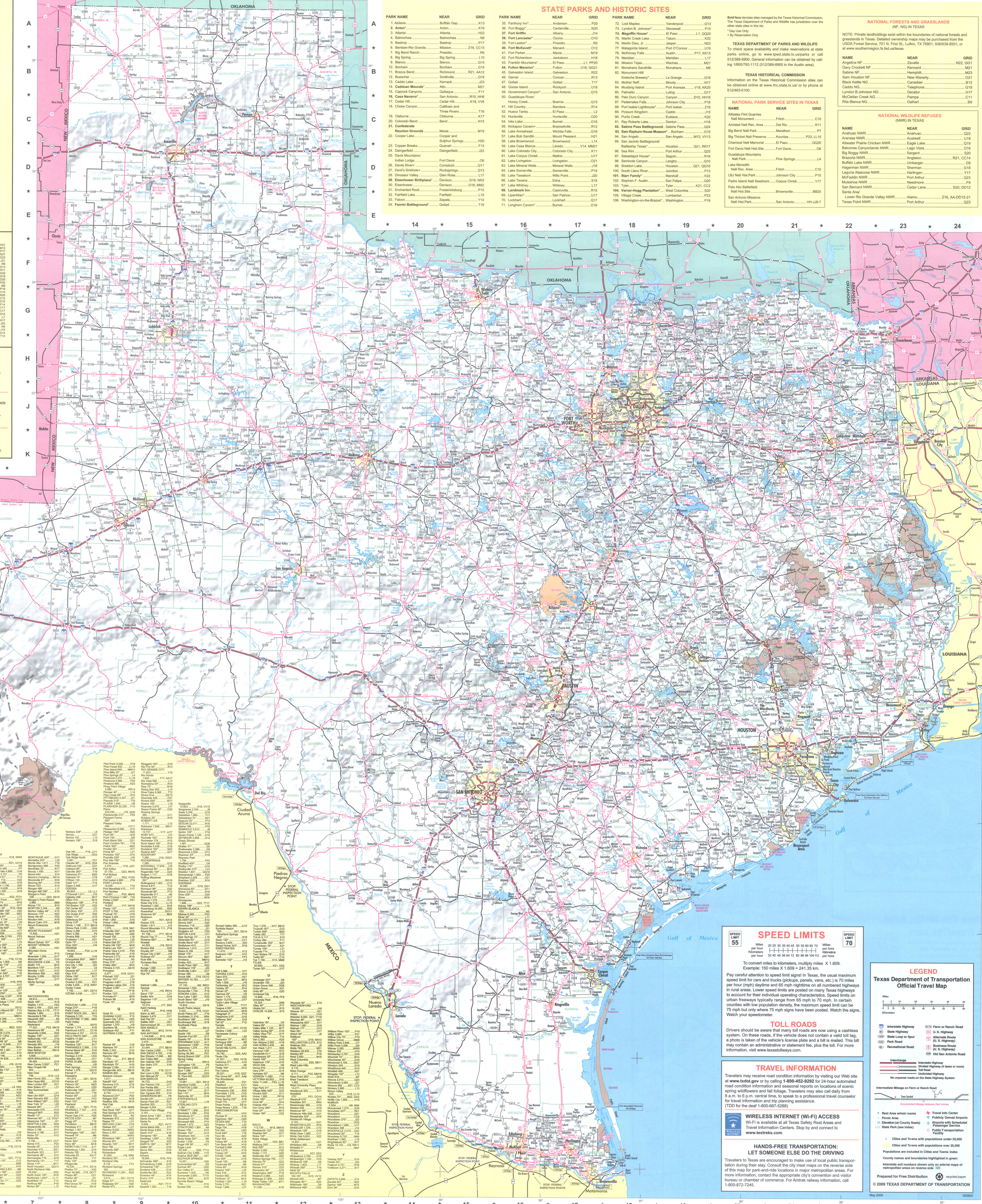
TEXAS DEPT. OF PUBLIC SAFETY
Call 1-800-525-5555 if you need roadside assistance. You may also report traffic accidents, intoxicated drivers, criminal activities and other emergencies at this number.

NOAA WEATHER RADIO
The National Oceanic and Atmospheric Administration (NOAA) provides continuous broadcasts of the latest weather information directly from the National Weather Service.

ONLINE RENEWAL OF TEXAS DRIVER'S LICENSE AND VEHICLE REGISTRATION
Texas citizens can go online to renew their driver's license, vehicle and vehicle registrations—in selected counties. Check out www.texasonline.com for more information.

CITIES AND TOWNS INDEX
NOTE: Populations shown are 2000 Census figures or a more recent estimate from the Texas State Data Center. Populations followed by \* are best available local estimates.

Table listing cities and towns in Texas with their county and grid coordinates. Includes a grid reference system for cities and towns.



STATE PARKS AND HISTORIC SITES

Table listing state parks and historic sites in Texas, including park name, location, and grid coordinates.

NATIONAL FORESTS AND GRASSLANDS (NF, NG) IN TEXAS
NOTE: Private landholdings east within the boundaries of national forests and grasslands in Texas. Detailed ownership maps may be purchased from the USDA Forest Service, 701 N. First St., Lubbock, TX 79601; 806/939-8501 or at www.usfs.gov/nfs/tx/landbase.

NATIONAL WILDLIFE REFUGES (NWR) IN TEXAS
Table listing national wildlife refuges in Texas, including name, location, and grid coordinates.

NATIONAL PARK SERVICE SITES IN TEXAS
Table listing national park service sites in Texas, including site name, location, and grid coordinates.

SPEED LIMITS
Pay careful attention to speed limit signs in Texas. The usual maximum speed limit for cars and trucks (pickup trucks, panel vans, etc.) is 70 miles per hour (mph) daytime and 65 mph nighttime on all numbered highways in rural areas.

TOLL ROADS
Drivers should be aware that many toll roads are now using a cashless system. On these roads, if the vehicle does not contain a valid toll tag, a photo is taken of the vehicle's license plate and a toll is mailed.

TRAVEL INFORMATION
Travelers may receive road condition information by visiting our Web site at www.tdot.gov or by calling 1-800-452-8292 for 24-hour automated road condition information and seasonal reports on locations of scenic spring wildflowers and fall foliage.

WIRELESS INTERNET (Wi-Fi) ACCESS
Wi-Fi is available at all Texas Safety Rest Areas. Travel information centers. Stop by and connect to www.tdotreks.com.

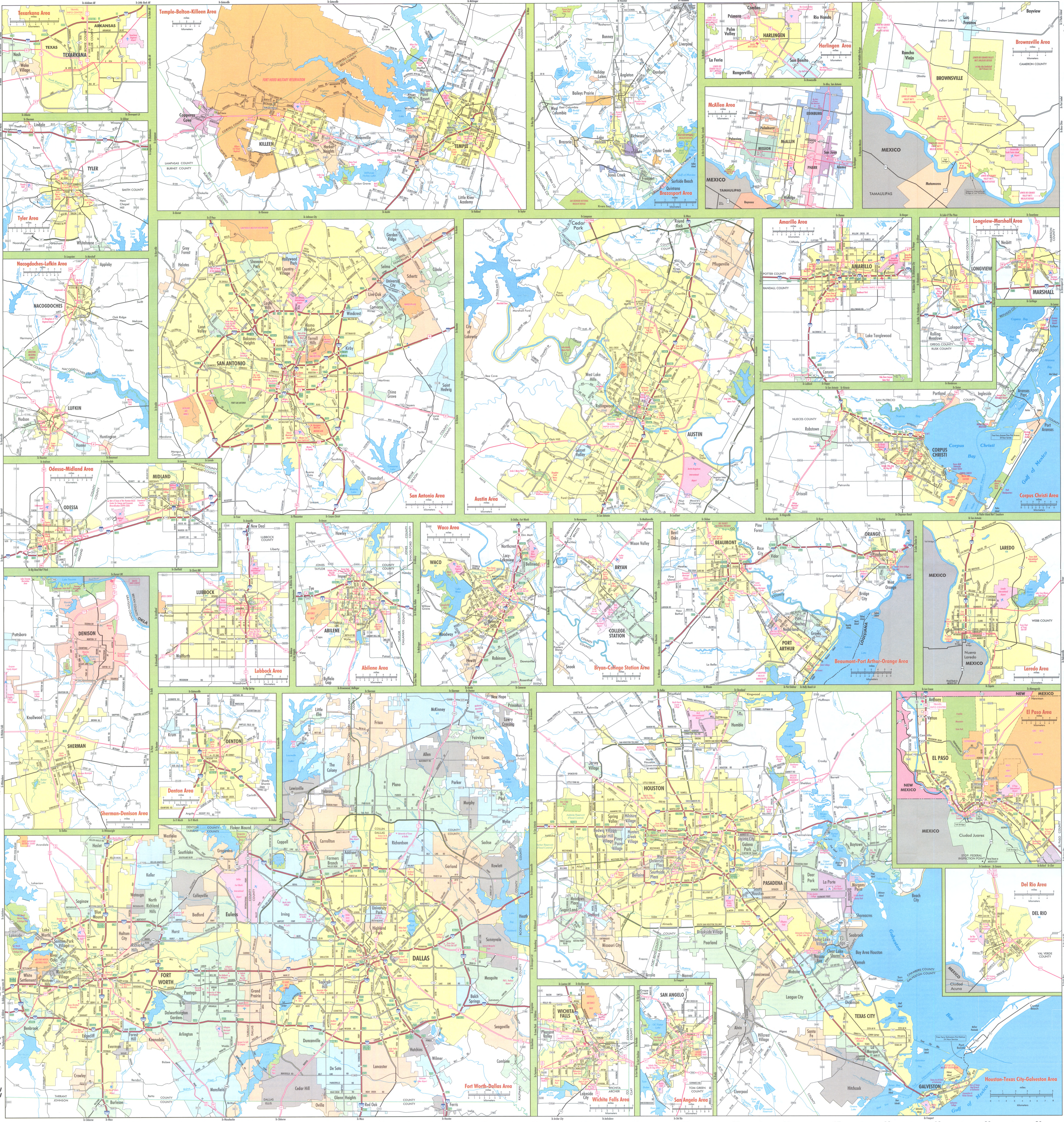
HANDS-FREE TRANSPORTATION: LET SOMEONE ELSE DO THE DRIVING
Travelers are encouraged to make use of local public transportation during their stay. Consult the city street maps on the reverse side of this map for park-and-ride locations in major metropolitan areas.

LEGEND
Texas Department of Transportation Official Travel Map
Legend describing symbols for highways, cities, towns, and other features.

LEGEND (continued)
Legend describing symbols for parks, historic sites, and other features.

LEGEND (continued)
Legend describing symbols for state parks and historic sites.

LEGEND (continued)
Legend describing symbols for state parks and historic sites.



**Texas Highways**  
 THE TRAVEL MAKING TEXAS  
 Great highways  
 scenic views  
 unique experiences  
 1-800-835-0084  
 Order Today by Calling  
 1-800-835-0084  
 or visit our website at  
[www.traveltex.com](http://www.traveltex.com)  
 SUBSCRIBE TO

**TEXAS**  
 Hit TravelTex.com  
 Before You Hit the Road,  
 TXD T 1325.7 H537  
 2009 OFFICIAL TRAVEL MAP  
**Texas**  
 THE OFFICIAL TRAVEL MAP OF TEXAS  
 O 1161 0845 2339  
 Texas Department of Transportation  
 www.traveltex.com

**TEXAS DEPARTMENT OF TRANSPORTATION**  
 For Road Conditions and Travel Information  
 call 1-800-452-9292 or visit [www.txdot.gov](http://www.txdot.gov).

TRAVEL INFORMATION CENTERS		
Amarillo	1-40	806/335-1441
Anthony	1-10	915/886-3466
Austin	Capitol Visitor Center	512/463-8586
Denison	U.S. 69/75	903/463-2860
Galveston	1-35	940/665-2301
Langtry	U.S. 90/Loop 25	432/291-3340
Laredo	I-35 at U.S. 83	956/417-4728
Orange	1-10	409/883-9416
Odessa	1-35	903/794-2114
Valley	U.S. 77 at U.S. 83 (Harlingen)	956/428-4477
Waskom	1-20	903/687-2547
Wichita Falls	1-44/U.S. 287, Exit 1C	940/723-7931

DISTRICT OFFICES		
Abilene	326/676-6800	4250 N. Clark 79801
Amarillo	806/356-3200	5715 Canyon Dr. 79110
Atlanta	903/795-2651	701 E. Main St. 75151
Austin	512/832-7000	7901 N. I-35 78753
Beaumont	409/892-7311	8350 Eastex Fwy. 77708
Brownwood	329/646-2591	2495 Hwy. 183 N. 76802
Bryan	979/772-2165	130 N. Texas Ave. 77703
Childress	940/937-7100	7599 U.S. 287 79201
Corpus Christi	361/808-2300	1701 S. Padre Island Dr. 78416
Dallas	214/320-6100	4777 E. Hwy. 80, Mesquite 75150
El Paso	915/790-4200	15301 Gateway West 79928
Fort Worth	817/370-6500	2501 S.W. Loop 820 76133
Houston	713/892-5000	7721 Washington Ave. 77007
Laredo	956/715-7400	1617 Bob Bullock Loop 78043
Lubbock	806/745-4411	135 Station Hwy. 79404
Lufkin	936/834-4433	1605 N. Timberland Dr. 75901
Odessa	432/333-6001	3901 E. Hwy. 80 79761
Paris	903/737-6000	1360 N. Main St. 75460
Pharr	956/702-6100	600 W. U.S. 83 Expy. 78577
San Angelo	325/944-1501	4502 Knickerbocker Rd. 76904
San Antonio	210/815-1110	4615 W. Loop 410 78229
Tyler	903/510-9100	2709 W. Front St. 75702
Waco	254/867-2700	100 S. Loop Dr. 76704
Wichita Falls	940/720-7700	1601 Southwest Pkwy. 76702
Yoakum	361/290-4300	603 Park St. 77995

For comments or complaints concerning the Department of Transportation, call 1-800-558-9368.

**GOVERNOR AND ANITA PERRY**

Welcome to the great state of Texas. Whether you are a visitor or a resident, I hope you take advantage of the vast and varied travel opportunities Texas offers. The seven tourism regions of Texas—Big Bend County, Gulf Coast, Hill Country, Panhandle, Pine Woods, Prairies and Lakes and South Texas Plains—point around with diverse environmental settings for business and personal enjoyment. Enjoy your travels along the more than 60,000 miles of excellent Texas highways and byways, and whatever your purpose or destination, drive safely and help keep Texas beautiful.

**TEXAS TRANSPORTATION COMMISSION**

**WILLIAM MEADOWS**, Commissioner  
**DEIRDRE DELISI**, Chair  
**NEO S. WELLES**, Commissioner  
**AMARDEO SAENZ, JR., P.E.**, Executive Director  
**FRED UNDERWOOD**, Commissioner

**Gov. Perry**  
 Rick Perry  
 Governor of Texas