

R200.3



An 78
1994

Texas Racing Commission



Annual Report

Government Publications
Texas State Documents

APR 14 1995

Depository
Dallas Public Library

1994



**NOTE: INFORMATION CONTAINED IN THIS ANNUAL REPORT
IS BASED ON THE 1994 CALENDAR YEAR EXCEPT WHERE INDICATED.**

AN EQUAL OPPORTUNITY EMPLOYER

**TEXAS RACING COMMISSION
9420 RESEARCH BOULEVARD
ECHELON BUILDING III, SUITE 200
AUSTIN, TEXAS 78759**

**MAILING ADDRESS:
P. O. BOX 12080
AUSTIN, TEXAS 78711-2080**

**PHONE: 512 794-8461
FAX: 512 794-9478**



Table of Contents

LETTER TO THE GOVERNOR FROM COMMISSION CHAIR3

LETTER TO THE GOVERNOR FROM EXECUTIVE SECRETARY4

LETTER TO COMMISSION CHAIR FROM DEPARTMENT OF PUBLIC SAFETY6

POLICYMAKING BODY.....8

ORGANIZATIONAL STRUCTURE.....9

REGULATORY FUNCTIONS 10

SCHEDULE OF FUNDS RECEIVED AND EXPENDED - FISCAL YEAR 1994 14

TEXAS-BRED PROGRAMS..... 16

EQUINE RESEARCH..... 17

DRUG TESTING..... 17

1994 STATISTICAL RACETRACK INFORMATION 18

FIVE YEAR OVERVIEW OF PARI-MUTUEL RACING 20

**STATISTICAL COMPARISON OF GROWTH IN ACTIVITY & REVENUE VS. COMMISSION
EXPENDITURES..... 21**

GREYHOUND RACETRACKS:

CORPUS CHRISTI GREYHOUND RACETRACK..... 22

GULF GREYHOUND PARK..... 24

VALLEY GREYHOUND PARK..... 26

HORSE RACETRACKS:

BANDERA DOWNS 28

GILLESPIE COUNTY FAIR & FESTIVALS ASSOCIATION..... 30

MANOR DOWNS..... 32

SAM HOUSTON RACE PARK 34

TRINITY MEADOWS RACEWAY 36

RETAMA PARK..... 38

LONE STAR JOCKEY CLUB..... 40

LONGHORN DOWNS..... 40

LUBBOCK DOWNS 40

A. L. MANGHAM, JR.
Chairman
GLENN BLODGETT, D.V.M.
Vice Chairman

LUKIN T. GILLILAND, JR.
DEORSEY E. MCGRUDER, JR., D.V.M.
PAT PANGBURN
ANNE DUNIGAN WILSON
Commissioners



TEXAS RACING COMMISSION
P. O. BOX 12080
AUSTIN, TEXAS 78711-2080
(512) 794-8461
FAX (512) 794-8478

Ex-Officio Members
JOHN SHARP
Comptroller of Public Accounts
RONALD D. KRIST
Chairman
Public Safety Commission
DAVID J. FREEMAN
Executive Secretary

January 31, 1995

The Honorable George W. Bush
Governor of the State of Texas
State Capitol, Room 200
Austin, Texas 78711

Dear Governor Bush:

In accordance with Section 3.10 of the Texas Racing Act (Article 179e, Vernon's Texas Civil Statutes) and on behalf of the Texas Racing Commission, it is my pleasure to submit to you the 1994 Annual Report.

This report summarizes the activities of the Commission during 1994 and provides information relating to all aspects of the Texas greyhound and horse racing programs and breeding programs throughout the year.

The Racing Commission remains steadfast in its commitment to provide effective regulation of the pari-mutuel industry. The Commission is dedicated to ensuring the health, safety and welfare of patrons and participants and to protecting the integrity of racing through its enforcement efforts. We look forward to serving you and to working with your staff to build a strong economic industry and to seeing all of Texas reap the benefits of the combined efforts.

Very truly yours,

A handwritten signature in cursive script, appearing to read "A. L. Mangham, Jr.".

A. L. Mangham, Jr.
Chairman

A. L. MANGHAM, JR.
Chairman
GLENN BLODGETT, D.V.M.
Vice Chairman

LUKIN T. GILLILAND, JR.
DEORSEY E. MCGRUDER, JR., D.V.M.
PAT PANGBURN
ANNE DUNIGAN WILSON
Commissioners



TEXAS RACING COMMISSION
P. O. BOX 12080
AUSTIN, TEXAS 78711-2080
(512) 794-8461
FAX (512) 794-8478

Ex-Officio Members
JOHN SHARP
Comptroller of Public Accounts
RONALD D. KRIST
Chairman
Public Safety Commission
DAVID J. FREEMAN
Executive Secretary

January 31, 1995

The Honorable George W. Bush
Governor of the State of Texas
State Capitol, Room 200
Austin, Texas 78711

Dear Governor Bush:

As the chief administrator of the Texas Racing Commission, I respectfully submit the Commission's 1994 Annual Report.

For the pari-mutuel racing industry in Texas, 1994 was a year of both disappointment and of guarded optimism. The experiences of the year taught the industry that it cannot continue to conduct its business in a timeworn fashion. Instead, to combat losses attributed to Texas' lottery and from newly opened casinos in Louisiana, the industry's leaders concluded that they must make changes to take their product to the people of Texas. The Texas Racing Commission has kept abreast of global industry advancements to ensure that it is prepared to adapt to industry changes while continuing to provide effective regulatory oversight to a diverse and unique business.

In April of 1994, Sam Houston Race Park ("SHRP") opened in Harris County bringing the number of operating racetracks in Texas to eight. Although the facility created jobs for the northwest Houston area, attendance and wagering levels for live racing did not live up to expectations. Simulcasting became an integral part of SHRP's product, mirroring wagering formats of more experienced racetracks. Trinity Meadows, Texas' other operating Class 1 racetrack, saw a decline in live wagering of over \$6 million from 1993, even though the track operated for 40 more race dates in 1994 (a decline of nearly \$80 thousand every racing day). In early 1994, parties to the licensing proceedings for the Dallas/Tarrant Counties Class 1 racetracks settled all lawsuits thereby paving the way for the construction of a world-class racing facility in Grand Prairie. Even with the lawsuits settled, Lone Star Jockey Club continued to suffer setbacks in its effort to secure financing and, at the end of 1994, was reorganizing in an attempt to attract investment.

Wagering on live racing at the Class 2 and Class 3 racetracks declined in 1994 from 1992/93 levels. However, simulcast wagering offset the live race wagering declines thereby maintaining and, in some cases, increasing purse levels for horse owners and enhancing breeders' fund supplements for Texas-bred horses. Increases in simulcast wagering during 1994 demonstrated that the public has a strong appetite for wagering on races that are televised to racing outlets in the state.

The year 1994 also proved to be a difficult one for Texas' greyhound racetracks. Gulf Greyhound Park, still the world's most successful greyhound racetrack, saw its wagering decline by over \$70 million (26%) from 1993. From 1992 to 1994, Corpus Christi Greyhound Race Track has seen its wagering decline by \$34 million per year from 1991 levels (46%). Valley Greyhound Park in Harlingen has dropped by almost \$26 million per year (48%) during the same time period resulting in management's decision to reduce its year-round operation to a seasonal operation for 1995.

All things considered, it would be easy to assume that the prognosis is not very good for the Texas pari-mutuel industry. However, neither the racing industry nor the Racing Commission are prepared to make that assumption as the industry is showing signs of encouragement. For example, in 1994, despite the downward wagering trends of individual racetracks on live racing, overall pari-mutuel wagering in Texas was up by \$9.5 million. There were increases in the amount of purse money paid to winning owners, in prices paid for race animals sold at auction, and in payments made to owners and breeders of Texas-bred animals. The Racing Commission made significant progress in repaying its early start-up costs by transferring \$2 million of its Special Revenue Fund to the General Revenue Fund in August of 1994. Additionally, San Antonio's Retama Park will open its superb new racing facility in April of 1995. With the addition of Retama Park, nine new racetracks will have opened in Texas since May of 1990, serving as evidence of the confidence that Texans have in pari-mutuel racing. According to racing experts, the Texas racing industry can be as strong as those of California, Kentucky, and New York if Texas racetracks are given an opportunity to fairly compete with other forms of gambling by making wagering available throughout all of Texas.

The Racing Commission staff continues to provide regulatory oversight to protect the integrity of racing while balancing the interests of the public, the participants, and the racetrack operators. The Commission's various divisions work together to eliminate race fixing and illegal wagering, to exclude unqualified and/or undesirable people from Texas racing, and to protect the health, safety, and welfare of the public, of the participants, and of the race animals.

On behalf of the Racing Commission, I would like to thank every state agency that assisted the Commission in its regulatory functions, most notably the Office of the Comptroller of Public Accounts and the Department of Public Safety. Their cooperation has helped to safeguard the honesty and integrity of pari-mutuel racing in Texas.

Sincerely,



David J. Freeman
Executive Secretary

TEXAS DEPARTMENT OF PUBLIC SAFETY

5805 N LAMAR BLVD BOX 4087 AUSTIN TX 78773-0001

512/465-2000



JAMES R. WILSON
DIRECTOR

DUDLEY M. THOMAS
ASST. DIRECTOR



COMMISSION
RONALD D. KRIST
CHAIRMAN
ALBERT B. ALKEK
ROBERT B. HOLT
COMMISSIONERS

January 13, 1995

A. L. Mangham, Commission Chair
Texas Racing Commission
9420 Research Boulevard, Suite 200
Eschelon Center, Building III
Austin, Texas 78759

**RE: ARTICLE 179e, SECTION 3.10
VERNON'S TEXAS CIVIL STATUTES**

Dear Mr. Mangham:

Article 179e, Section 3.10 of Vernon's Texas Civil Statutes requires the Texas Racing Commission (TRC) to obtain a comprehensive report from the Texas Department of Public Safety (DPS) that would indicate any organized crime activity in Texas, as well as information on any and all illegal gambling. As required by this statute, we submit the following:

1994 - CRIME ACTIVITY AND CRIME TRENDS

Although the crime rate for many offenses decreased over the past year, investigations conducted by personnel of the Criminal Intelligence Service revealed certain criminal activities to be more prevalent. It is worthy to note that during 1994, investigators documented extensive criminal activity relative to credit card abuse, insurance fraud and counterfeiting of drivers' licenses and other official documents. Additionally, fraud schemes associated with telemarketing businesses were common in the major metropolitan areas. Bank robberies, other aggravated robberies and drug induced "Mickey Finn" type robberies remain a law enforcement concern. Bribery, corruption and official misconduct associated with elected and appointed officials were documented all too frequently. Burglaries and embezzlement (employee theft) also occur on an all too regular basis. Continued civil unrest and political assassinations in Mexico continue to be of particular concern due to the close proximity and shared border with Texas.

**ARTICLE 179e, SECTION 3.10
OF VERNON'S TEXAS CIVIL STATUTES
Page 2**

Street and prison gangs, aligned along the lines of age, race and/or national origin, continue to grow in strength and numbers. It has been noted by both law enforcement and correctional authorities that street gang members are becoming hard-core at a younger age. Violent crimes by juveniles are a common occurrence. Apprehension and removal of violent parole violators and career criminals from the streets of Texas remains a major priority for state and local officers.

ILLEGAL GAMBLING

Penalties related to illegal gambling offenses were reduced to misdemeanor violations during the 73rd Legislative Session. Removal of felony offenses has influenced many law enforcement agencies to direct enforcement efforts to other felony violations. Bookmaking investigations are time consuming and require more manpower than many agencies can devote to misdemeanor offenses. Investigations have documented that bookmakers in the metropolitan areas are taking illegal wagers on horse races conducted at Texas pari-mutuel facilities. Bookmakers also continue to take action on traditional collegiate and professional sporting events such as football, basketball, baseball and hockey. Criminal Intelligence information indicates that bookmakers are more frequently using telephones to communicate gambling information and to take wagers since the external communication rule was relaxed to openly allow telephones in racetrack enclosures.

This report is to apprise the Texas Racing Commission of the extent of the current problems in Texas reference the above areas of concern.

Sincerely,



Don R. Plemons
Commander
Criminal Intelligence Service
Texas Department of Public Safety

DRP:blc

Policymaking Body

The Commission is composed of eight members, six of whom are appointed by the Governor with the advice and consent of the Senate. These six non-salaried commissioners serve overlapping six-year terms. Of these six, two must be veterinarians, one specializing in the treatment of small animals, and one in the treatment of large animals.

Of the four members who are not veterinarians, two must have knowledge or experience related to greyhound racing and two must have knowledge or experience related to horse racing. The Chair of the Public Safety Commission and the Comptroller of Public Accounts serve

as ex-officio members of the Commission with full voting privileges. The Governor designates the chair. The eight members elect the vice-chair for a term of two years.

On matters of general application to both greyhound and horse racing, the Commission acts as a single body. For purposes of rule making and licensing, or for any action relating exclusively to horse racing or exclusively to greyhound racing, the Commission acts as separate sections.

In 1994, there were seven full Commission meetings and one meeting of the Horse Section only.

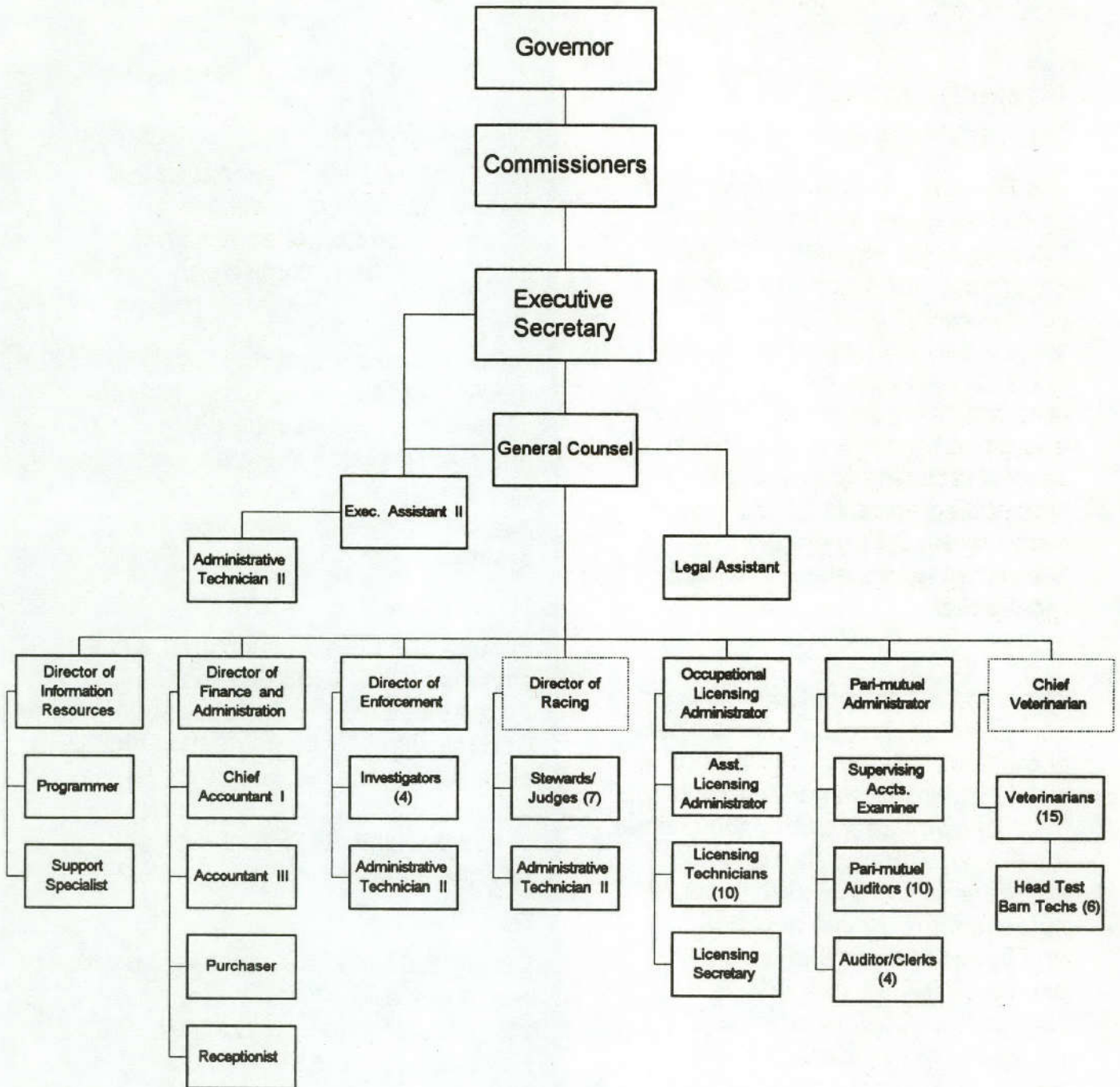
<i>Commissioners</i>	<i>Section</i>	<i>Hometown</i>	<i>Term Expires</i>
A. L. Mangham, Jr., Chair	Greyhound	Nacogdoches	2/1/95
Glenn P. Blodgett, D.V.M., Vice-Chair	Horse	Guthrie	2/1/95
Lukin T. Gilliland, Jr.	Horse	San Antonio	2/1/99
Deorsey E. McGruder, Jr., D.V.M.	Greyhound	Dallas	2/1/99
Pat Pangburn	Greyhound	Southlake	2/1/97
Anne Dunigan Wilson	Horse	Abilene	2/1/97

Ex-Officio Members:

Ronald D. Krist, Chair, Public Safety Commission	Houston	N/A
John Sharp, Comptroller of Public Accounts	Austin	N/A

Organizational Chart

as of 12/31/94



Denotes vacant position

Regulatory Functions

The Commission's operations are divided into three main groups: Administration, Enforcement, and Racetrack Licensing.

ADMINISTRATION

EXECUTIVE DIVISION

The Executive Division includes the Executive Secretary and General Counsel and their staff. As head of the agency, the Executive Secretary supervises the agency's activities as a whole. This division is also responsible for recommending race date allocations, assessing administrative penalties against racetrack licensees, and prosecuting appeals from decisions made by the Board of Stewards/Judges at the operating racetracks.

The Sunset Advisory Commission completed its comprehensive review of the Texas Racing Commission in 1994. Their recommendations to the 74th Legislature include: to continue the Racing Commission for six years; to eliminate the separate horse and greyhound sections and have the board act as one on all issues; and to change the qualifications for membership to include six public members who have general knowledge of business or agribusiness.

FINANCE DIVISION

The Finance Division manages the budget, accounting, purchasing, personnel, and other administrative functions of the Commission.

Because of the mandated requirement for all state agencies to convert to new statewide accounting and payroll systems, the division spent much of the year adapting to and implementing these new systems.

In 1994, the division submitted a cost savings plan of \$155,687 to the Texas Incentive and Productivity Commission. By implementing this plan, each classified employee of the Commission was able to receive a bonus equal to 18.75% of the total savings amount.

During 1995 the Finance Division will play a key role in obtaining a budget appropriation from the Legislature for the 1996-97 fiscal biennium.

1994 Annual Report

The Texas Racing Commission

Page 11

INFORMATION RESOURCES DIVISION

The main purpose of this division is to procure the hardware and purchase and develop the software necessary for the day-to-day activities of the Commission while developing new procedures to assist the staff in automating and streamlining their jobs wherever possible.

A record number of 52 new programs were developed and 916 modifications were made to existing applications/functions. Staff in this division responded to fifty-one open record requests and solved 211 hardware and/or software problems.

The Information Resources Division foresees their most significant contribution in 1995 as providing information resources for Retama Park while continuing to support the existing tracks and the Austin office.

ENFORCEMENT

ENFORCEMENT DIVISION

The Commission's investigators administer and coordinate the enforcement of the Commission's Rules and the Texas Racing Act. Investigations were conducted on animal drug positives, criminal histories returned on license applicants, illegal wagering, use and possession of contraband, drug

abuse and narcotics trafficking, and other illicit activities that could affect the integrity of pari-mutuel racing.

The Enforcement Division conducted a total of 403 investigations into suspected rule and law violations in 1994. In addition, 675 serious criminal history reports were received from the Department of Public Safety and the Federal Bureau of Investigation on current and former licensees and 1,966 minor criminal history reports were received and reviewed for licensing compliance.

The opening of Retama Park in April of 1995 will bring new demands on the investigative staff. The Enforcement Division will continue to provide investigation services responsive to the needs of the Commission and staff.

RACETRACK LICENSING

RACING DIVISION

The Division includes Commission Stewards and Racing Judges, at least one Commission Veterinarian for each operating pari-mutuel racetrack, and other support personnel. The Racing Division is responsible for supervising races being conducted and for implementing the Commission's drug testing program for race animals. In addition, Stewards/Judges are authorized to suspend licenses for up

1994 Annual Report

The Texas Racing Commission

Page 12

to one year and to assess fines of up to \$5,000 if warranted.

Stewards/Judges at greyhound and horse racetracks handed down a total of 931 rulings. Of that number, 637 resulted in fines, 200 resulted in suspensions, and 33 resulted in the licensee being restored to good standing.

PARI-MUTUEL AUDITING DIVISION

To safeguard the interest of the wagering public and the state, the Pari-Mutuel Auditing Division tests the computer programs that calculate odds and payoffs on wagers, wagering patterns, and mutuel operations at the racetrack, as well as monitoring the Texas-Bred Incentive Program.

The completion of these tasks assists in assuring the wagering public and state that the correct amount of dollars are being distributed as required by the Texas Racing Act.

OCCUPATIONAL LICENSING DIVISION

The Licensing Division is responsible for issuing occupational licenses and registrations to all persons involved in pari-mutuel greyhound and horse racing. This Division works closely with the Enforcement Division and the Stewards/Judges. Licensing staff at each racetrack help to maintain the integrity of the industry by insuring all

participants are licensed and in good standing.

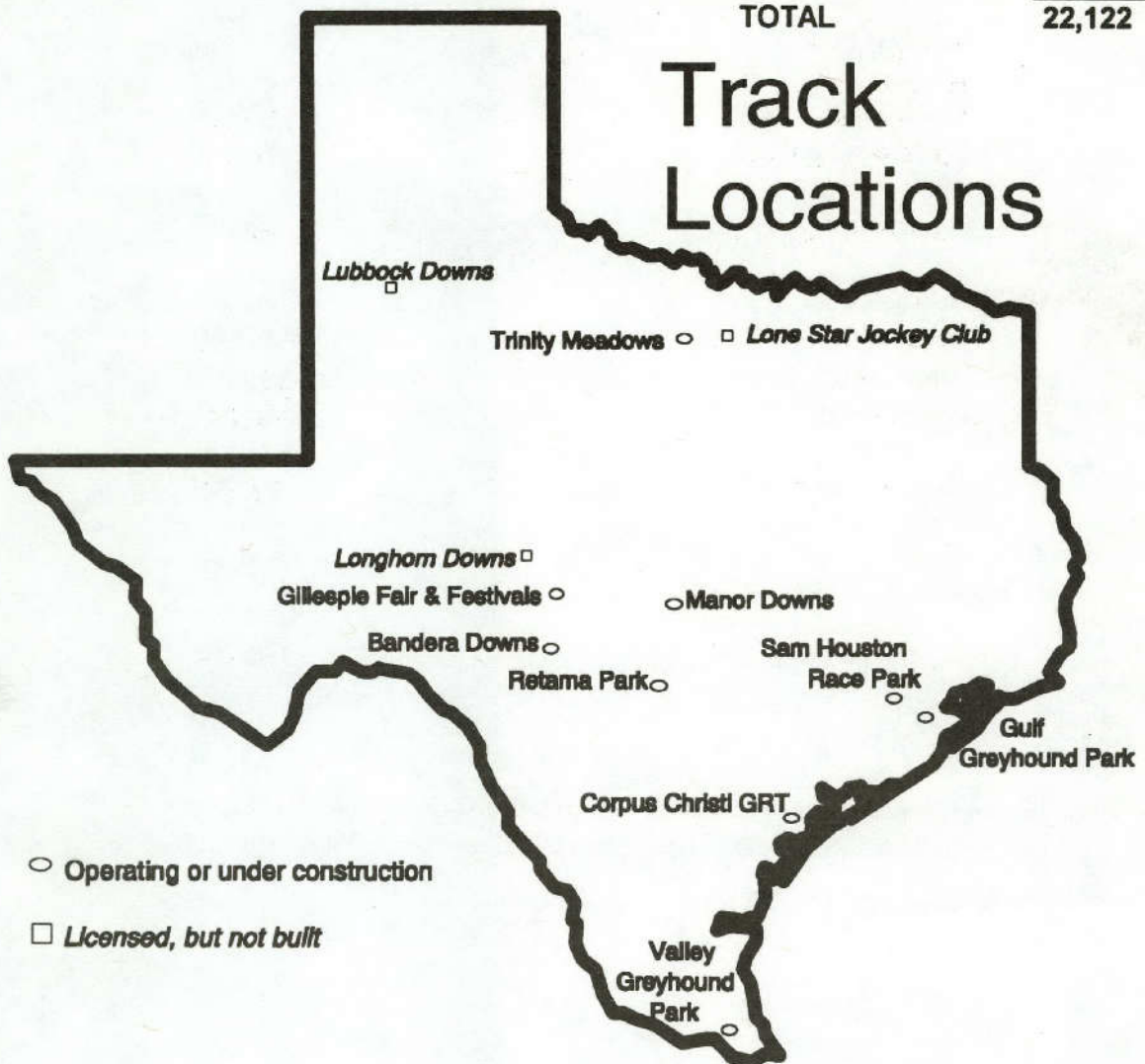
The opening of Sam Houston Race Park was a major project of 1994. The Division also concentrated on improving the procedures of the fingerprint process which is an essential part of maintaining integrity in the racing industry.

In 1995, Class 1 racing will grow with the addition of Retama Park. The Licensing Division will continue to develop ways to improve efficiency and productivity to effectively support the licensing needs of all individuals involved in pari-mutuel racing in Texas.

In 1994, the Commission issued 22,122 occupational licenses in the following categories:

A & M Lab Staff	33
Admissions	355
Adoption Staff	10
Announcer	15
Apprentice Jockey	31
Assistant Farrier	4
Association Asst. Management	52
Association Management Staff	40
Association Office Staff	176
Association Officer	52
Association Steward/Judge	18
Association Other	26
Association Veterinarian	9
Asst. Trainer/Owner	74
Assistant Starter	81
Assistant Trainer	194
Authorized Agent	110
Chaplain	4
Commissioner	7
Cool-Out	3
Entry Clerk	3
Exercise Rider	294
Farrier	87

Food Service	711	Racing Official	139
Groom	1,726	Security Officer	343
Industry Representative	4	Stable Foreman	2
Jockey	320	State Judge or Steward	10
Jockey Agent	65	State Veterinarian	24
Kennel Helper	278	Tattooer	4
Kennel Owner/Trainer	10	Test Technician	78
Kennel Owner/O/T	19	Tooth Floater	4
Kennel Owner/Owner	59	Tote Technician	43
Law Enforcement	248	Training Facility General Mgr.	2
Lead-Out	223	Training Facility Employee	4
Licensing Clerk	21	Trainer	642
Maintenance	531	TX DPS	44
Marketing Staff	60	TX Comptroller Staff	3
Medical Staff	80	TxRC Consultant	4
Miscellaneous	54	TxRC Staff	56
Multiple Owner	1,319	Valet	45
Mutuel Clerk & Other	1,617	Vendor Employee	2,081
Outrider	17	Veterinarian's Assistant	27
Owner	7,610	Veterinarian	60
Owner-Trainer	1,476		
Parking Attendant	184		
Pony Person	197		
		TOTAL	22,122



**Schedule of Funds
Received and Expended**

	<u>General Revenue Fund (001)</u>
REVENUES:	
Racetrack Licenses – Horses:	
Class I Tracks	\$ 100,000
Class II Tracks	60,000
Training Tracks	<u>3,000</u>
Total Racetrack Licenses – Horses	163,000
Racetrack Licenses – Greyhounds	100,000
Outstanding Tickets	818,408
Race Day Fees:	
Horses	355,050
Greyhounds	<u>643,740</u>
Total Race Day Fees	998,790
Occupational Licenses	960,172
Breakage:	
Horses	2,941,491
Greyhounds	<u>1,039,585</u>
Total Breakage	3,981,076 *
Track Official's Fees	815,141
Other	<u>51,740</u>
TOTAL REVENUE	\$ <u>7,888,327</u>

NOTE: Breakage revenue includes all money deposited by the racetracks pursuant to V.T.C.S. Art. 179 e, Sec. 6.08 (d), (h), and (i), Sec. 6.09 (d), and Sec. 6.091 (a) (2) – (4).

1994 Annual Report

The Texas Racing Commission

Page 15

Fiscal Year 1994

(9/1/93 - 8/31/94)

	<u>General Revenue</u> <u>Fund (001)</u>
EXPENDITURES:	
Salaries & Wages	\$ 1,959,999
Payroll Related Costs	548,233
Professional Fees and Services	116,666
Travel	107,567
Materials & Supplies	96,546
Communications & Utilities	109,637
Repairs & Maintenance	53,533
Rentals & Leases	106,855
Printing & Reproduction	30,105
Other Expenditures	42,297
Capital Outlay	96,434
Distributions to Breed Registries	<u>3,210,053</u>
TOTAL EXPENDITURES	\$ <u>6,477,925</u>
EXCESS REVENUES OVER EXPENDITURES	\$ <u>1,410,402</u>
TRANSFERS OUT:	
General Revenue Fund	2,000,000
Equine Research	57,104
Texas Comm. on Alcohol & Drug Abuse	308,177
Savings Measurement Account	38,921
Section 110 Budget Reductions	74,271
Section 153 Budget Reductions	10,554
School Child Care Fund	<u>81</u>
TOTAL TRANSFERS OUT	\$ <u>2,489,108</u>
EXCESS REVENUES OVER EXPENDITURES & TRANSFERS	\$ <u>(1,078,706)*</u>

NOTE: Cash used to fund shortfall for FY '94 was from excess revenues carried forward from prior fiscal years.

Texas-Bred Programs

Two of the reasons the Texas Racing Commission was created are to encourage agriculture and to encourage the horse and greyhound breeding industries in the state. The Texas-Bred Incentive Program accomplishes these goals by providing purse supplements and monetary breeders' awards to breeders and owners of Texas-bred greyhounds and horses.

GREYHOUND

Funding for the Texas-Bred Greyhound Incentive Program is derived from 50 percent of the total breakage from greyhound racetracks. Of that portion, 25 percent is used for stakes races and the remaining 25 percent is paid to the Commission for use by the state greyhound breed registry for disbursement to the owners of Texas-bred greyhounds.

Once a month these funds are distributed by dividing the monthly

total available for awards by the number of winning Texas-bred greyhounds for that month.

HORSE

Each Texas-bred horse finishing first, second or third in any race other than a stakes race receives a purse supplement.

The supplement is funded from 98 percent of the breakage from all pari-mutuel pools and from 98 percent of one percent of all multiple two and multiple three wagering pools. These monies are distributed on a 40/40/20 percent split, respectively, among the owners, breeders, and stallion owners of the accredited Texas-bred horse.

The Texas Racing Act names the official breed registries which determine the qualifications for Texas-Bred status for their breed, maintain the eligibility lists and distribute the monetary awards.

1/1/94 - 12/31/94 DISTRIBUTIONS

Texas Greyhound Association	\$577,799
Texas Bred Stakes Races - Horse	183,168
Texas Thoroughbred Breeders' Association	1,764,299
Texas Quarter Horse Association	1,148,418
Texas Arabian Breeders Association	46,513
Texas Appaloosa Horse Club	2,206
Texas Paint Horse Breeders Association	<u>7,788</u>
TOTAL	\$3,730,191

Equine Research

The 72nd Legislature passed a major revision of the Texas Racing Act in 1991 which included dedicating a small portion of wagers made at horse tracks to fund the Equine Research Account. The legislation also created the Equine Advisory Committee as an adjunct to the

Texas Agricultural Experiment Station to review research proposals, recommend grant awards, and host an annual conference on equine research.

In 1994, \$66,805.57 went to the Equine Research Advisory Committee from pari-mutuel wagering.

Drug Testing

The Commission oversees a comprehensive drug testing program to safeguard the interests of the wagering public by ensuring that greyhounds and horses participate in racing free from prohibited drugs, chemicals, or other foreign substances.

Blood and urine specimens are collected from horses and greyhounds and then submitted to the Texas Veterinary Medical Diagnostic Laboratory at Texas A & M University (TVMDL) for testing.

If a specimen tests positive for a prohibited substance, the animal may be immediately disqualified from receiving any purse money, and an investigation is conducted. During 1994, 25,401 greyhound specimens and 12,020 horse specimens were submitted to TVMDL for testing.

The following illegal substances were detected:

GREYHOUND		HORSE	
3' Hydroxy-pentobarbital	4	Desmethyl Pyrilamine	2
Ephedrine	7	Dexamethasone	2
Gamma Hydroxy Bute	10	Dextrophan	2
Lidocaine	1	Ephedrine	2
Mephesisin	1	Furosemide (Lasix)	19
Methocarbamol	1	Guaifenesin	1
Phenylpropanolamine	9	Isoxsurpine	1
Polyethylene Glycol (PEG)	16	Phenylbutazone (Bute)	43
Procaine	7	Polyethylene Glycol (PEG)	8
Sulfamethoxazole	12	Procaine	2
Trimethoprim	4	Sulfamethoxazole	4
		Trimethoprim	5
TOTAL	72	TOTAL	81

Human drug testing has become an integral part of regulating the racing industry in Texas. The Commission tests licensees who are suspected of using illegal drugs while performing their duties. If a licensee tests positive for any illicit drug, the licensee faces a suspension and is encouraged to seek professional help. In 1994, 50 human drug tests were conducted with 19 being positive.

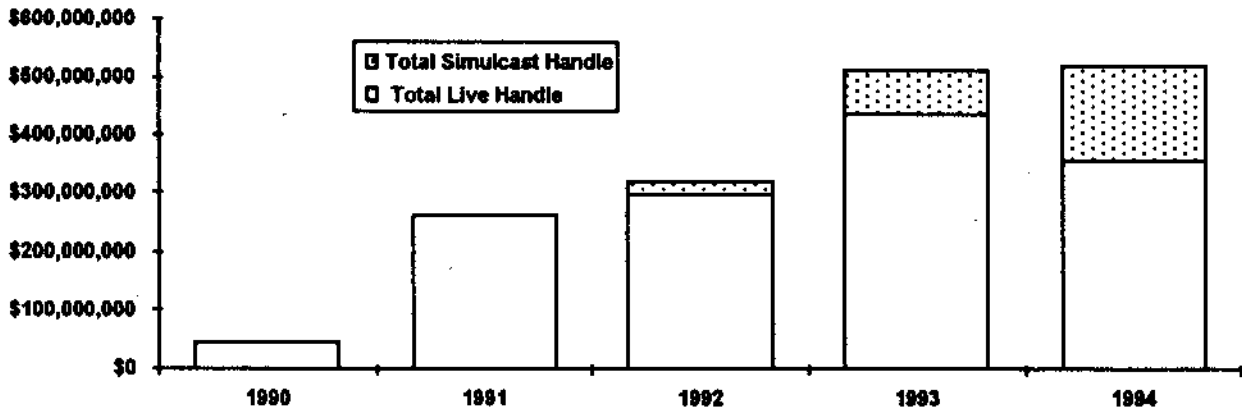
GREYHOUND & HORSE RACETRACK STATISTICS 1/1/94 - 12/31/94 (UNAUDITED)

In 1994, Texas pari-mutuel racetracks used wagering on simulcast races to enhance their live racing program. Under the Commission's rules, a racetrack may offer simulcast races as an extra wagering opportunity on a live race day. A racetrack may also offer simulcast races during a live race meeting on days when no live races are being conducted (dark day simulcasting). Finally, a racetrack may offer simulcast races during a period of days or weeks between live race meetings (simulcast only). For example, Bandera Downs offered simulcast races both before and after its live race meeting in 1994. During the live race meeting, Bandera offered live races and simulcast races on Fridays, Saturdays, and Sundays, but simulcast races alone on Wednesdays and Thursdays. Gillespie County Fairgrounds offered no simulcast races at all.

TRACKS	TOTAL HANDLE	TOTAL ATTEND/ AVG. ATTEND	PER CAPITA	STATE SHARE	LME PERF	S'CAST PERF	BREAK OUT OF TOTAL HANDLE	
							TOTAL LIVE/ AVG. LIVE	TOTAL S'CAST/ AVG. S'CAST
CORPUS CHRISTI		435,643	\$88	\$705,063	456	313	\$32,135,826	\$6,234,692
Live w S'cast	\$38,370,518	955					\$70,473	\$19,919
S'cast Only	\$2,014,081	18,980	\$106	\$20,141	0	152	\$0	\$2,014,081
		125						\$13,261
CORPUS - TOTAL	\$40,384,559	454,623	N/A	\$725,204	456	465	\$32,135,826	\$8,248,773
GULF - TOTAL	\$198,244,589	1,482,336	\$134	\$4,947,189	524	1	\$198,237,141	\$7,448
		2,829					\$378,315	\$7,448
VALLEY		261,309	\$88	\$381,871	370	321	\$15,319,387	\$7,548,298
Live w S'cast	\$22,867,685	706					\$41,404	\$23,515
S'cast Only	\$5,416,112	27,326	\$198	\$54,161	0	302	\$0	\$5,416,112
		90						\$17,934
VALLEY - TOTAL	\$28,283,797	288,635	N/A	\$436,032	370	623	\$15,319,398	\$12,964,410
TOTAL GREYHOUND	\$266,912,985	2,225,594	N/A	\$6,108,425	1,350	1,089	\$245,692,354	\$21,220,631
SAM HOUSTON								
TBred Meet	\$27,713,813	338,793	\$82	\$277,138	45	20	\$25,691,180	\$2,022,633
(4/29 - 6/19)		7,529					\$570,915	\$101,132
Dark Day S'cast	\$283,314	997	\$285	\$2,833	0	3	\$0	\$283,314
(4/29 - 6/19)		332						\$94,438
S'cast Only	\$1,484,814	5,119	\$290	\$14,848	0	11	\$0	\$1,484,814
(6/20 - 6/30)		465						\$134,983
QH Meet	\$22,401,269	250,091	\$90	\$224,013	60	60	\$13,315,956	\$9,085,313
(7/1 - 9/18)		4,168					\$221,933	\$151,422
Dark Day S'cast	\$1,717,296	5,775	\$297	\$17,173	0	18	\$0	\$1,717,296
(7/1 - 9/18)		321						\$95,405
S'cast Only	\$2,788,632	9,781	\$285	\$27,886	0	19	\$0	\$2,788,632
(9/19 - 10/7)		515						\$146,770
Tbred Meet	\$21,241,753	180,349	\$118	\$212,418	54	52	\$10,951,696	\$10,290,057
(10/8 - 12/31)		3,340					\$202,809	\$197,886
Dark Day S'cast	\$2,783,072	14,743	\$189	\$27,831	0	31	\$0	\$2,783,072
(10/9 - 12/31)		476						\$89,777
SAM HOUSTON - TOTAL	\$80,413,963	805,648	N/A	\$804,140	159	214	\$49,958,832	\$30,455,131

TRACKS	TOTAL HANDLE	TOTAL ATTENDY AVG. ATTEND	PER CAPITA	STATE SHARE	LIVE PERF	S'CAST PERF	BREAK OUT OF TOTAL HANDLE	
							TOTAL LIVE/ AVG. LIVE	TOTAL S'CAST/ AVG. S'CAST
TRINITY MEADOWS								
S'cast Only (1/15 - 2/27)	\$14,487,145	35,280 860	\$411	\$144,871	0	41	\$0	\$14,487,145 \$353,345
Dark Day S'cast (2/28 - 6/20)	\$4,397,586	9,606 384	\$458	\$43,976	0	22	\$0	\$4,397,586 \$199,890
Mixed Meet (3/5 - 6/20)	\$38,839,929	171,735 2,290	\$226	\$388,399	75	61	\$18,412,809 \$245,504	\$20,427,120 \$334,871
Tbred Meet (6/25 - 10/10)	\$38,943,323	162,105 2,078	\$240	\$389,433	78	78	\$17,379,766 \$222,818	\$21,563,557 \$276,456
Dark Day S'cast (6/21 - 10/10)	\$1,647,783	4,481 249	\$368	\$16,478	0	18	\$0	\$1,647,783 \$91,544
Mixed Meet (10/12 - 12/31)	\$21,876,810	73,296 1,357	\$298	\$218,768	54	47	\$7,556,247 \$139,931	\$14,320,583 \$304,693
Dark Day S'cast (10/12 - 12/31)	\$2,201,041	4,506 347	\$488	\$22,010	0	13	\$0	\$2,201,041 \$169,311
TRINITY - TOTAL	\$122,393,617	461,008	N/A	\$1,223,936	207	280	\$43,348,822	\$79,044,795
BANDERA								
S'cast Only (1/5 - 1/30)	\$877,732	3,822 191	\$230	\$8,777	0	20	\$0	\$877,732 \$43,887
Mixed Meet (2/5 - 9/5)	\$18,020,773	140,352 1,613	\$128	\$180,208	87	85	10,851,121 \$122,427	\$7,389,852 \$85,694
Dark Day S'cast (2/5 - 9/5)	\$2,072,187	7,701 131	\$269	\$20,722	0	59	\$0	\$2,072,187 \$35,122
S'cast Only (9/8 - 12/31)	\$4,623,774	15,721 210	\$294	\$46,238	0	75	\$0	\$4,623,774 \$61,650
BANDERA - TOTAL	\$25,594,466	167,596	N/A	\$255,945	87	240	\$10,651,121	\$14,943,345
MANOR								
S'cast Only (1/2 - 2/27)	\$2,800,880	8,112 198	\$345	\$28,009	0	41	\$0	\$2,800,880 \$68,314
Q/H Meet (3/5 - 6/12)	\$5,928,597	39,495 1,274	\$150	\$59,286	31	30	\$3,468,252 \$111,815	\$2,462,345 \$82,078
Dark Day S'cast (3/5 - 6/12)	\$2,453,342	6,529 159	\$376	\$24,533	0	41	\$0	\$2,453,342 \$59,838
S'cast Only (6/15 - 12/31)	\$11,241,371	31,133 219	\$361	\$112,414	0	142	\$0	\$11,241,371 \$79,165
MANOR - TOTAL	\$22,424,170	85,289	N/A	\$224,242	31	254	\$3,468,252	\$18,957,918
GILLESPIE CO - TOTAL	\$1,699,711	27,201	\$63	\$16,997	12	0	\$1,699,711	\$0
TOTAL HORSE	\$252,525,927	1,546,723	N/A	\$2,525,259	496	988	\$109,124,738	\$143,401,189
TOTAL HORSE	\$252,525,927	1,546,723	N/A	\$2,525,259	496	988	\$109,124,738	\$143,401,189
TOTAL GREYHOUND	\$266,912,985	2,225,594	N/A	\$6,108,425	1,350	1,089	\$245,682,354	\$21,220,631
TOTAL	\$519,438,912	3,772,317	N/A	\$8,633,684	1,846	2,077	\$354,817,092	\$164,621,820

Five Years of Pari-Mutuel Racing 1990-1994 Horse & Greyhound Tracks Combined



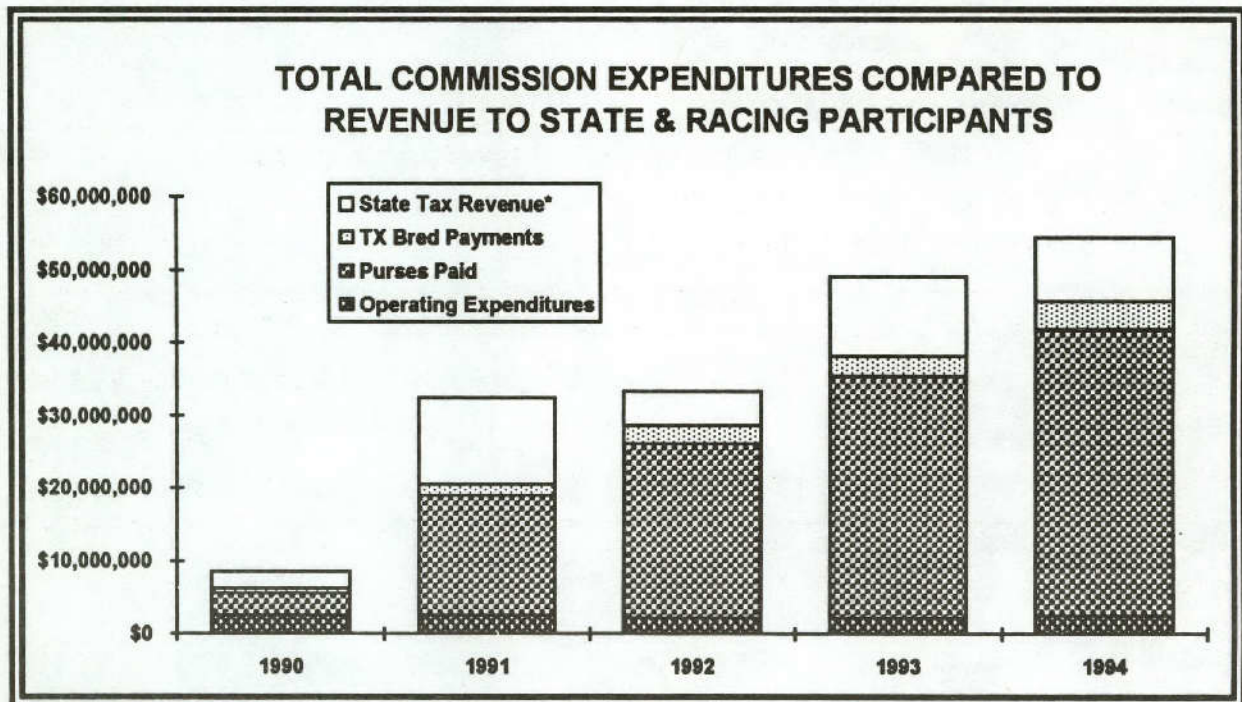
Note: 1990: 3 horse tracks opened, June, July & Nov., 2 greyhound tracks opened in Nov.
 1991: 4th horse track opened in late May, 2 greyhound tracks operational
 1992: 4 horse tracks operational, 3rd greyhound track opened in Nov.
 1993: 4 horse tracks & 3 greyhound tracks operational
 1994: 5th horse track opened in late April; 3 greyhound tracks operational

	1990	1991	1992	1993	1994
HANDLE:					
Live	\$44,999,387	\$262,689,040	\$296,107,332	\$437,444,294	\$354,817,092
Simulcast	\$0	\$1,079,138	\$24,673,726	\$72,501,554	\$164,621,820
TOTAL	\$44,999,387	\$263,768,178	\$320,781,058	\$509,945,848	\$519,438,912
RACE DAYS					
Live	225	1,158	1,340	1,689	1,846
Simulcast	0	3	292	760	2,077
PURSES PAID	\$3,054,354	\$16,239,026	\$23,928,460	\$33,231,422	\$39,402,952
ATTENDANCE	560,722	2,480,941	2,733,950	3,853,785	3,772,317

STATISTICAL COMPARISON OF GROWTH IN ACTIVITY & REVENUE VS. COMMISSION EXPENDITURES

	1990	1991	1992	1993	1994
Number of Tracks	5	6	7	7	8
Handle	\$44,999,387	\$263,768,178	\$320,781,058	\$509,945,848	\$519,438,912
Attendance	560,722	2,686,062	2,733,959	3,853,785	3,772,317
Purses Paid	\$3,054,354	\$16,239,026	\$23,928,460	\$33,231,423	\$39,402,953
TX Bred Payments	\$594,200	\$1,709,373	\$2,500,610	\$2,678,486	\$3,730,191
State Tax*	\$2,384,261	\$11,900,421	\$4,758,083	\$10,864,563	\$8,633,684
TxRC Operating Expenditures (FY)	\$2,554,123	\$2,594,524	\$2,241,812	\$2,221,964	\$2,489,382

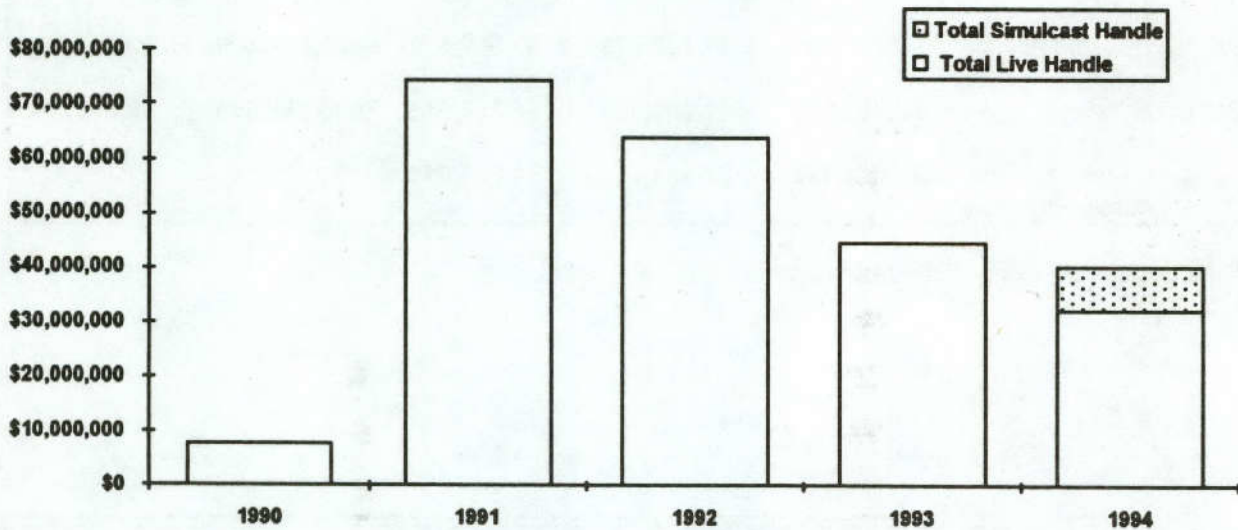
*The Legislature lowered the tax rate to the State in 1991.



Corpus Christi Greyhound Race Track

CCGRT opened for racing on November 15, 1990 in the "City by the Sea", Corpus Christi. The track's payroll expense for 1994 for its 190 employees was over \$2.1 million. In 1994 the track paid over \$650,000 in admissions, liquor, sales and real estate taxes.

1990-1994



Note: 11/15/90 Track opened
 9/1/91 Change in pari-mutuel take out structure
 5/20/92 First scratch off lottery ticket sold
 11/7/92 First Lotto ticket sold

	1990	1991	1992	1993	1994
HANDLE					
Live	\$7,514,299	\$74,584,472	\$63,905,556	\$44,721,484	\$32,135,826
Simulcast	\$0	\$0	\$16,227	\$0	\$8,248,773
TOTAL	\$7,514,299	\$74,584,472	\$63,921,783	\$44,721,484	\$40,384,599
PERFORMANCES					
Live	57	459	455	456	456
Simulcast	0	0	1	0	465
PURSES PAID	\$263,001	\$2,664,770	\$3,139,226	\$2,180,470	\$1,778,615
ATTENDANCE	119,632	949,399	775,648	549,429	454,623



Inaugural Meet: 11/15/90

Size of Track: 1,347 feet; 22 feet wide

Total Seating Capacity: 2,500

Kennel Capacity: 60 crates - 18 kennels

Attendance Record: 6,242 on 11/23/90

Wagering Record \$355,166 on 2/28/92

**1995 Race Schedule:
456 Live Performances**

Jan. - Aug. & Dec. - Tuesday through Sunday, Sept. - Nov. - Wednesday through Sunday

Holiday racing on May 29, Sept. 4 & Nov. 24

Closed Apr. 18, Nov. 24, Dec. 24 & Dec. 25

(Race dates are subject to change.)

CORPUS CHRISTI GREYHOUND RACE TRACK

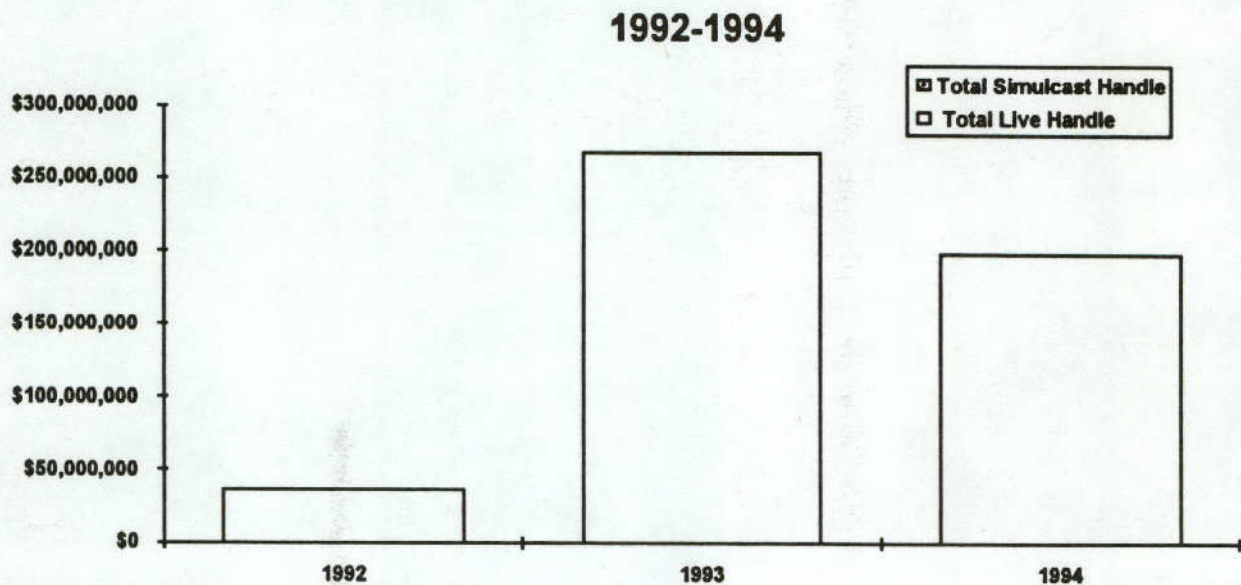
5302 Leopard Street, Corpus Christi, TX 78408

P. O. Box 9087, Corpus Christi, TX 78469

Phone 800 580-7223, Fax 512 289-4307

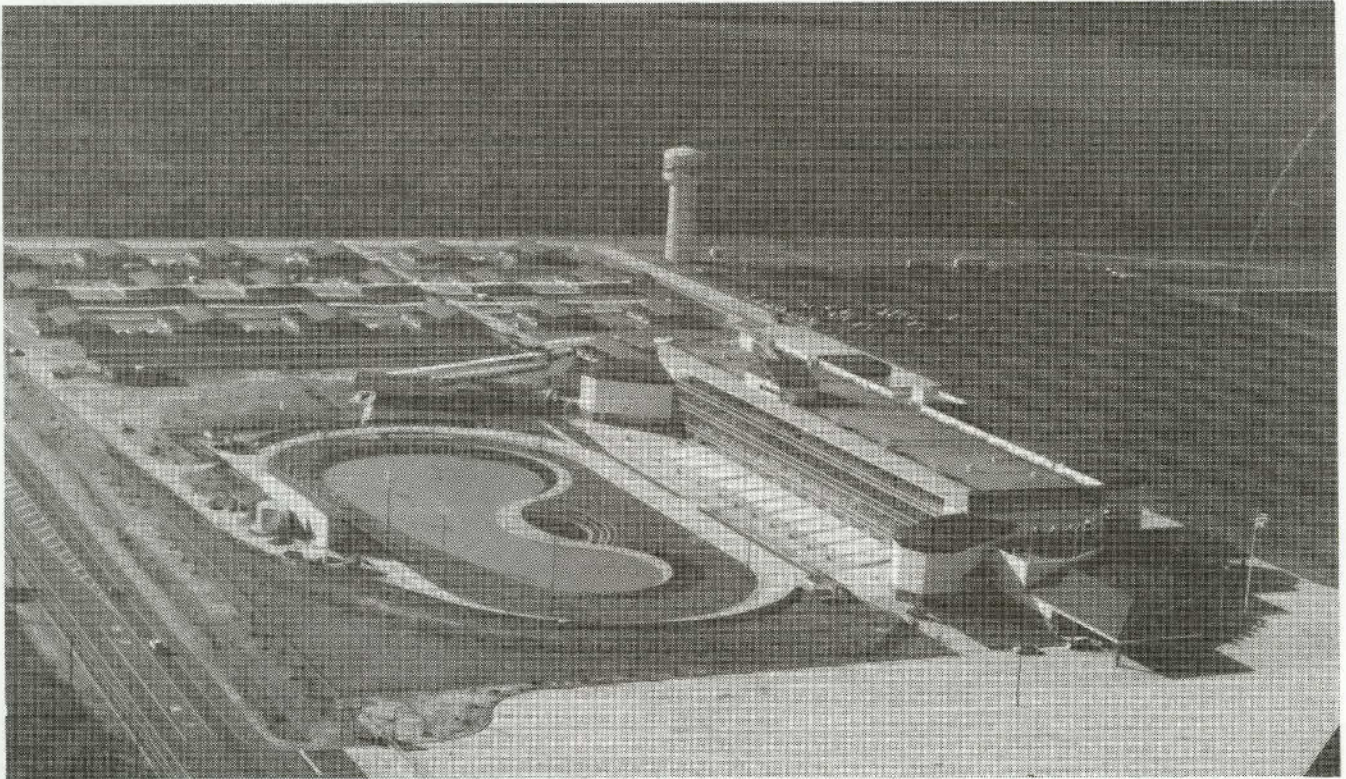
Gulf Greyhound Park

Gulf maintained its position as the number one greyhound track in the country in both total handle and attendance in its second full year of operations. In addition to sending its signal in-state to Corpus Christi Greyhound and Valley Greyhound Park, ten tracks, three casinos and 19 off-site areas outside Texas now receive Gulf's races. The track's payroll expense for 1994 for its 1,050 employees was over \$9.6 million. In 1994 the track paid over \$2.3 million in admissions, liquor, sales and real estate taxes.



Note: 5/20/92 First scratch off lottery ticket sold
 11/7/92 First Lotto ticket sold
 11/10/92 Track opened

	1992	1993	1994
HANDLE			
Live	\$36,972,037	\$268,382,614	\$198,237,141
Simulcast	\$0	\$0	\$7,448
TOTAL	\$36,972,037	\$268,382,614	\$198,244,589
PERFORMANCES			
Live	65	494	524
Simulcast	0	0	1
PURSES PAID	\$1,848,601	\$13,419,313	\$9,912,207
ATTENDANCE	339,544	2,069,888	1,482,336



Inaugural Meet: 11/10/92
Size of Track: 1/4 mile; 22 feet wide
Total Seating Capacity: 8,862

Kennel Capacity: 60 crates - 18 kennels
Attendance Record: 17,070 on 1/22/94
Wagering Record \$1,427,219 on 7/5/93

1995 Race Schedule:

527 Live Performances

Jan. - Dec., Tuesday through Sunday

Holiday racing on Jan. 2, Jan. 16, Feb. 20, May 29, July 3, Sept. 4, & Oct. 9,

Closed Dec. 24 & Dec. 25

(Race dates are subject to change.)

GULF GREYHOUND PARK

1000 FM 2004, La Marque, TX 77568

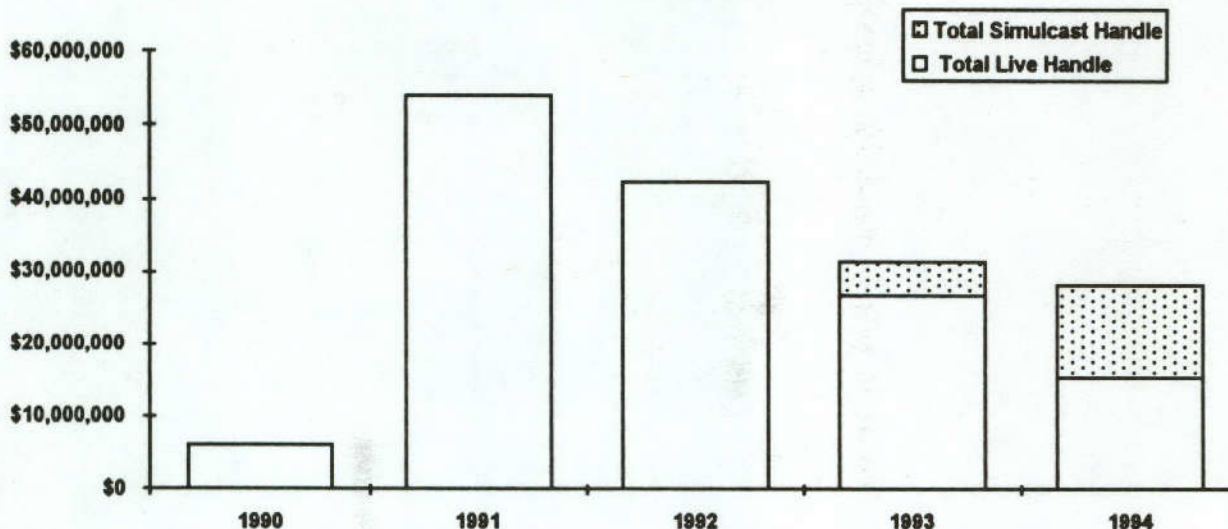
P. O. Box 488, La Marque, TX 77568-0488

Phone 800 275-2946, Fax 409 986-9700

Valley Greyhound Park

Valley Greyhound Park, located in the Rio Grande Valley, became the first greyhound track in Texas when it opened on November 14, 1990. The track's payroll expense for 1994 for its 197 employees was over \$2.5 million. In 1994 the track paid over \$400,000 in admissions, liquor, sales and real estate taxes.

1990-1994



- Note: 11/14/90 Track opened
 9/1/91 Change in pari-mutuel take out structure
 5/20/92 First scratch off lottery ticket sold
 11/7/92 First Lotto ticket sold

	1990	1991	1992	1993	1994
HANDLE					
Live	\$5,914,833	\$54,243,886	\$42,320,824	\$26,677,486	\$15,319,387
Simulcast	<u>\$0</u>	<u>\$0</u>	<u>\$8,664</u>	<u>\$4,498,058</u>	<u>\$12,964,410</u>
TOTAL	\$5,914,833	\$54,243,886	\$42,329,488	\$31,175,544	\$28,283,797
PERFORMANCES					
Live	55	418	420	388	370
Simulcast	0	0	1	221	623
PURSES PAID	\$207,019	\$1,945,268	\$2,084,081	\$1,415,154	\$1,152,195
ATTENDANCE	100,351	684,080	504,389	360,654	288,635



Inaugural Meet: 11/14/90

Size of Track: 1/4 mile; 22 feet wide

Total Seating Capacity: 2,500

Kennel Capacity: 60 crates - 18 kennels

Attendance Record: 4,712 on 11/23/90

Wagering Record: \$327,827 on 12/07/91

1995 Race Schedule:

269 Live Performances

Jan. - Sept. 4 - Tuesday through Sunday, Closed Sept. 5 - Dec. 25

Dec. 26 - Dec. 31 - Tuesday through Sunday

Holiday racing on May 29 & Sept. 4

Closed Sept. 5 through December 25 for Live Racing

(Race dates are subject to change.)

VALLEY GREYHOUND PARK

2601 South Ed Carey, Harlingen, TX 78550

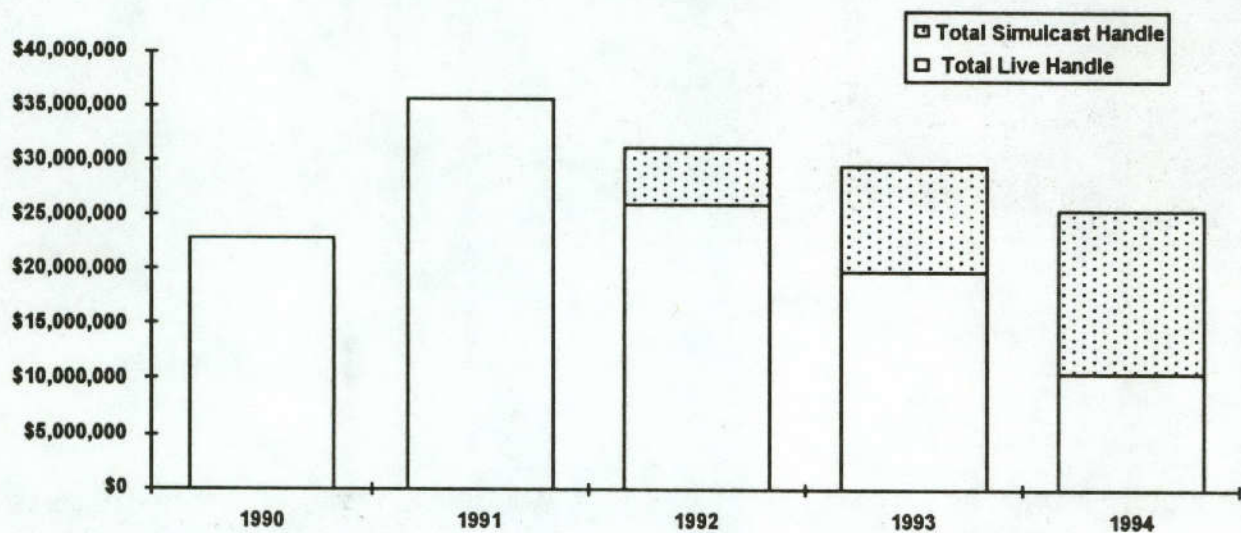
Phone 210 428-0161, Fax 210 428-0163

Bandera Downs

Class 2

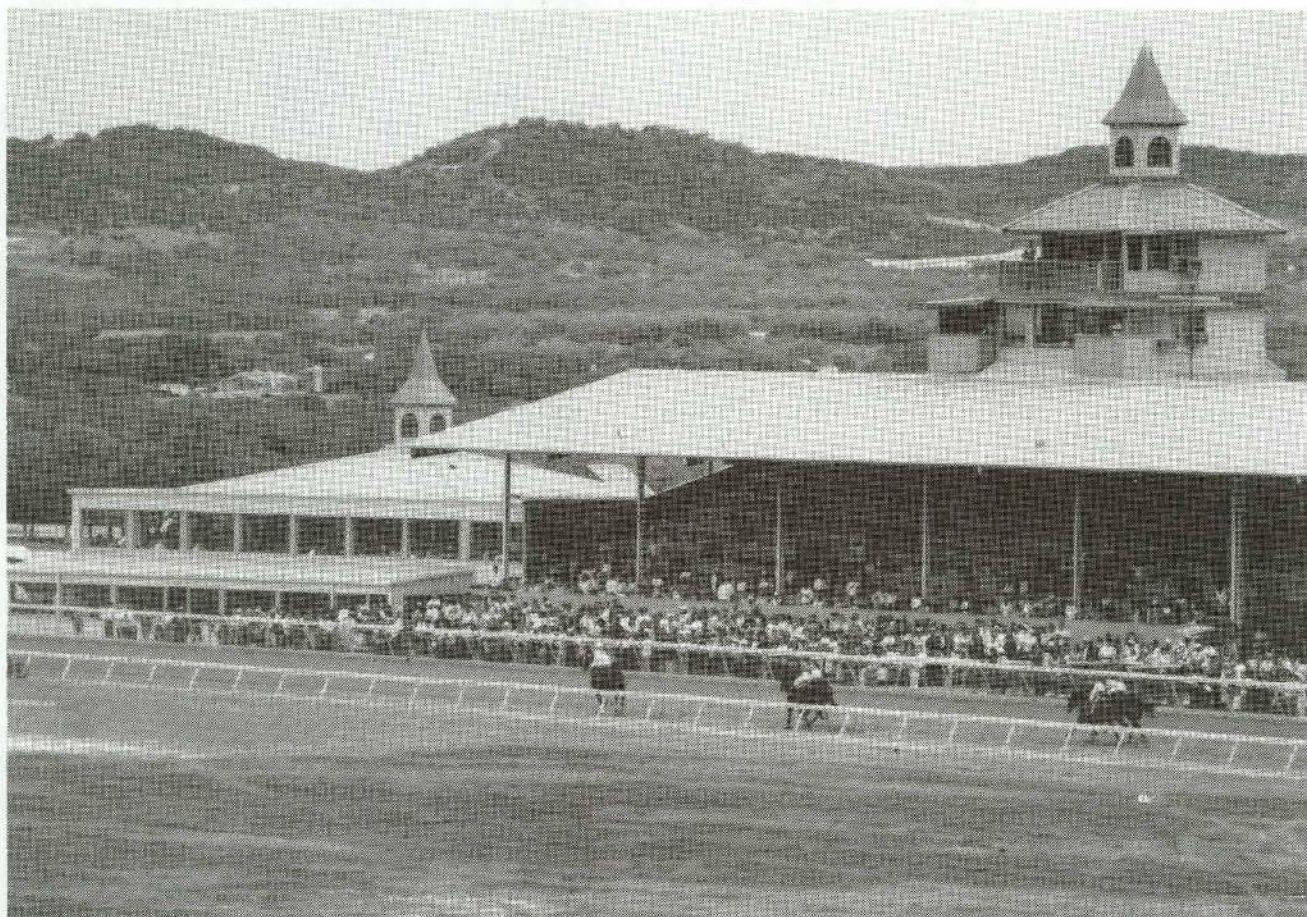
Bandera Downs, located 40 miles northwest of San Antonio in historic Bandera, opened for pari-mutuel racing on July 6, 1990. The track's payroll expense for 1994 for its 375 employees was over \$1.5 million. Almost \$2.3 million was paid out in purses in 1994. Bandera Downs paid over \$250,000 in admissions, liquor, sales and real estate taxes.

1990-1994



- Note: 7/6/90 Track opened
 9/1/91 Change in pari-mutuel take out structure
 5/20/92 First scratch off lottery ticket sold
 11/7/92 First Lotto ticket sold

	1990	1991	1992	1993	1994
HANDLE					
Live	\$22,941,593	\$35,605,637	\$26,028,301	\$19,875,839	\$10,651,121
Simulcast	\$0	\$160,670	\$5,163,300	\$9,670,656	\$14,943,345
TOTAL	\$22,941,593	\$35,766,307	\$31,191,601	\$29,546,495	\$25,594,466
RACE DAYS					
Live	67	120	117	114	87
Simulcast	0	1	132	177	240
PURSES PAID	\$1,465,675	\$3,467,359	\$3,800,819	\$3,508,467	\$2,297,470
ATTENDANCE	229,136	284,690	271,342	219,827	167,596



Inaugural Meet: 7/6/90

Total Stall Space: 930

Size of Track: 7/8 mile; 75 feet wide

Attendance Record: 7,814 on 9/3/90

Total Seating Capacity: 3,050

Wagering Record \$550,541 on 5/16/92

1995 Race Date Schedule:

52 Day Mixed Meet

March 3 through August 20, Saturday & Sunday

& Holiday racing on May 29 and July 3

(Race dates are subject to change.)

BANDERA DOWNS

2 Miles East of Bandera, Hwy. 16, Bandera, TX 78003

P. O. Box 1775, Bandera, Texas 78003

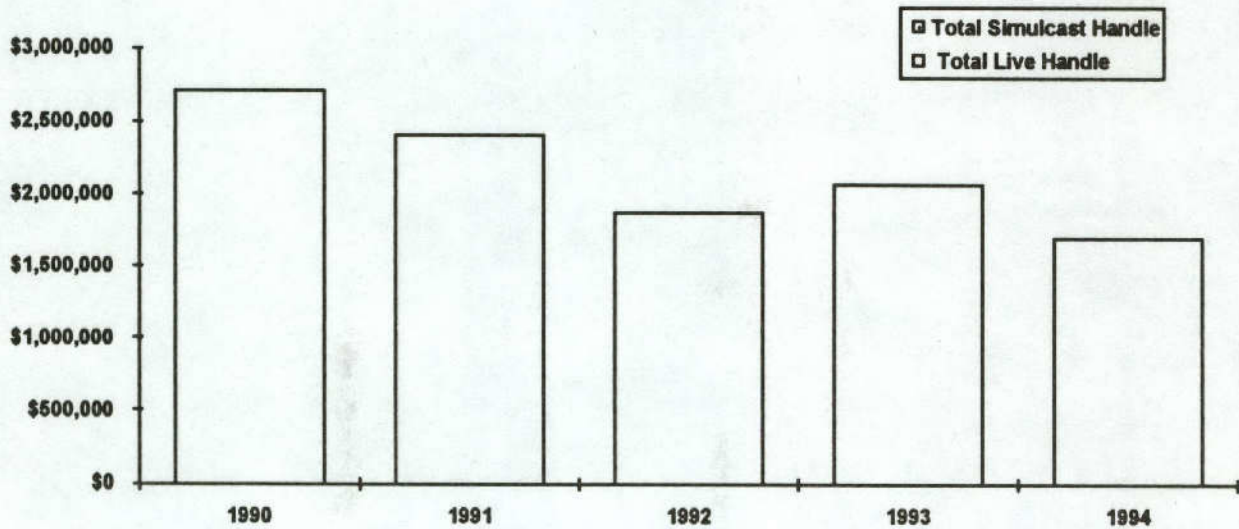
Phone 800 572-2332, Fax 210 796-7660

Gillespie County Fair & Festivals

Class 3

Gillespie County Fair & Festivals Association is a non-profit county fair organization located in Fredericksburg. The association is known for its year-round support and contributions to area youth and agricultural programs. The track's payroll expense for 1994 for its 125 employees was over \$116,000. Almost \$500,000 was paid out in purses in 1994. Gillespie County paid over \$32,000 in sales and real estate taxes.

1990-1994



Note: 5/26/90 Track opened
 9/1/91 Change in pari-mutuel take out structure
 5/20/92 First scratch off lottery ticket sold
 11/7/92 First Lotto ticket sold

	1990	1991	1992	1993	1994
HANDLE					
Live	\$2,710,647	\$2,408,853	\$1,868,998	\$2,066,862	\$1,699,711
Simulcast	\$0	\$0	\$0	\$0	\$0
TOTAL	\$2,710,647	\$2,408,853	\$1,868,998	\$2,066,862	\$1,699,711
RACE DAYS					
Live	12	14	10	12	12
Simulcast	0	0	0	0	0
PURSES PAID	\$307,353	\$361,571	\$360,257	\$496,987	\$493,917
ATTENDANCE	47,491	29,323	22,163	29,077	27,201



PROUD RECIPIENTS OF SCHOLARSHIPS FUNDED BY GILLESPIE COUNTY!

Inaugural Meet: 5/26/90

Total Stall Space: 200

Size of Track: 5/8 mile; 80 feet wide

Attendance Record: 7,574 on 7/4/90

Total Seating Capacity: 3,200

Wagering Record \$352,854 on 7/4/90

1995 Race Date Schedule:

11 Day Mixed Meet

June 17 & 18, July 1 & 2, 15 & 16, & Aug. 12 & 13, Saturday & Sunday

Aug. 25, 26 & 27, Friday, Saturday & Sunday

(Race dates are subject to change.)

GILLESPIE FAIR & FESTIVALS ASSOCIATION

Highway 16 South, Fredericksburg, TX 78624

P. O. Box 526, Fredericksburg, TX 78624

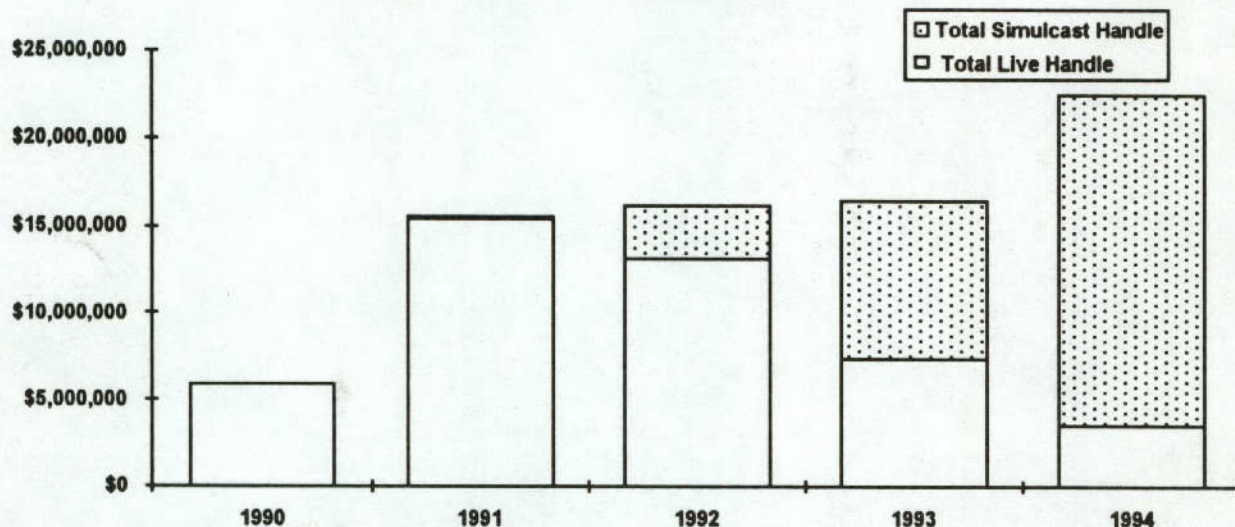
Phone 210 997-2359, Fax 210 997-9013

Manor Downs

Class 2

Located just east of Austin, Manor Downs opened on October 11, 1990. The track's payroll expense for 1994 for its 120 employees was almost \$825,000. Over \$1.1 million was paid out in purses in 1994. Manor Downs paid over \$100,00 in admissions, liquor, sales and real estate taxes.

1990-1994



Note: 10/11/90 Track opened
 9/1/91 Change in pari-mutuel take out structure
 5/20/92 First scratch off lottery ticket sold
 11/7/92 First Lotto ticket sold

	1990	1991	1992	1993	1994
HANDLE					
Live	\$5,918,015	\$15,356,040	\$13,158,030	\$7,329,573	\$3,466,252
Simulcast	<u>\$0</u>	<u>\$136,546</u>	<u>\$2,967,187</u>	<u>\$9,129,160</u>	<u>\$18,957,918</u>
TOTAL	\$5,918,015	\$15,492,586	\$16,125,217	\$16,458,733	\$22,424,170
RACE DAYS					
Live	34	90	74	58	31
Simulcast	0	1	81	159	254
PURSES PAID	\$811,306	\$2,327,790	\$1,719,642	\$1,754,863	\$1,194,251
ATTENDANCE	64,112	161,585	132,954	97,963	85,269



Inaugural Meet: 10/11/90

Total Stall Space: 673

Size of Track: 550 yd. straightaway
80 feet wide

Attendance Record: 3,829 on 5/19/91

Total Seating Capacity: 2,500

Wagering Record: \$414,794 on 12/16/90

1995 Race Date Schedule:

31 Day Quarter Horse Meet

March 4 through June 11, Saturday and Sunday racing

& Holiday racing on May 29

(Race dates are subject to change.)

MANOR DOWNS

101 Hilltop Lane, Manor, TX 78653

P. O. Box 141309, Austin, TX 78714

Phone 512 272-5581, Fax 512 272-5479

Sam Houston Race Park**Class 1**

Less than nine months following groundbreaking ceremonies, Sam Houston Race Park opened for racing with over 16,500 fans! The track's payroll expense for 1994 for its 636 employees was over \$2.1 million. The track paid over \$840,000 in admissions, liquor, real estate and sales tax.

1994		
HANDLE		
	Live	\$49,958,832
	Simulcast	\$30,455,131
	TOTAL	\$80,413,963
RACE DAYS		
	Live	159
	Simulcast	214
PURSES PAID		\$12,173,921
ATTENDANCE		805,648

Inaugural Meet: 4/29/94

Total Stall Space: 1,224

Size of Track: 1 mile; 80 feet wide

Attendance Record: 16,568 on 4/29/94

Total Seating Capacity: 7,000

Wagering Record \$1,281,157 on 4/29/94

1995 Race Date Schedule:

54 Day Thoroughbred Meet - Jan. 5 through April 2 - Thursday through Sunday

40 Day Quarter Horse Meet - July 14 through Sept. 17 - Thursday through Sunday

68 Day Thoroughbred Meet - Sept. 28 through Dec. 31 - Wed. through Sunday

Holiday racing on Jan. 16, Feb. 20 and Sept. 4

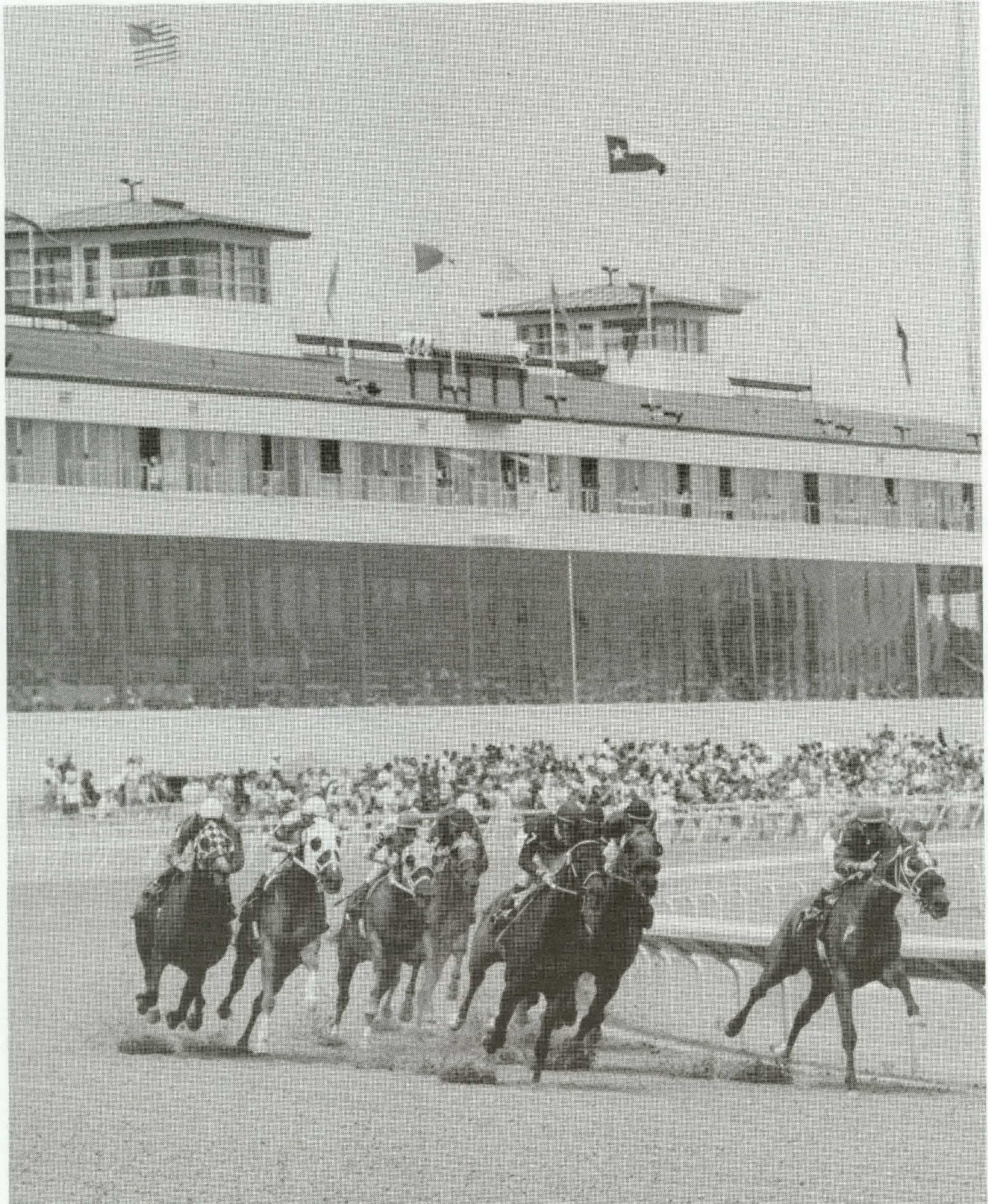
Closed November 23

*(Race dates are subject to change.)***SAM HOUSTON RACE PARK**

One Sam Houston Place, Houston, TX 77252

P. O. Box 2323, Houston, TX 77252-2323

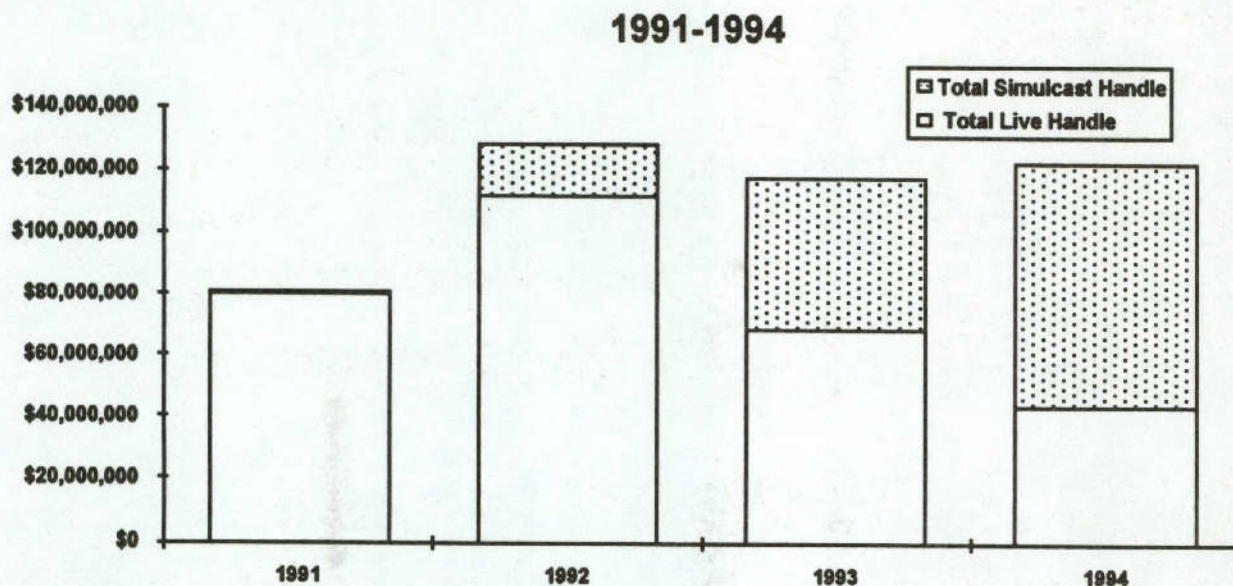
Phone 713 807-8700, Fax 713 807-8777



Trinity Meadows Raceway

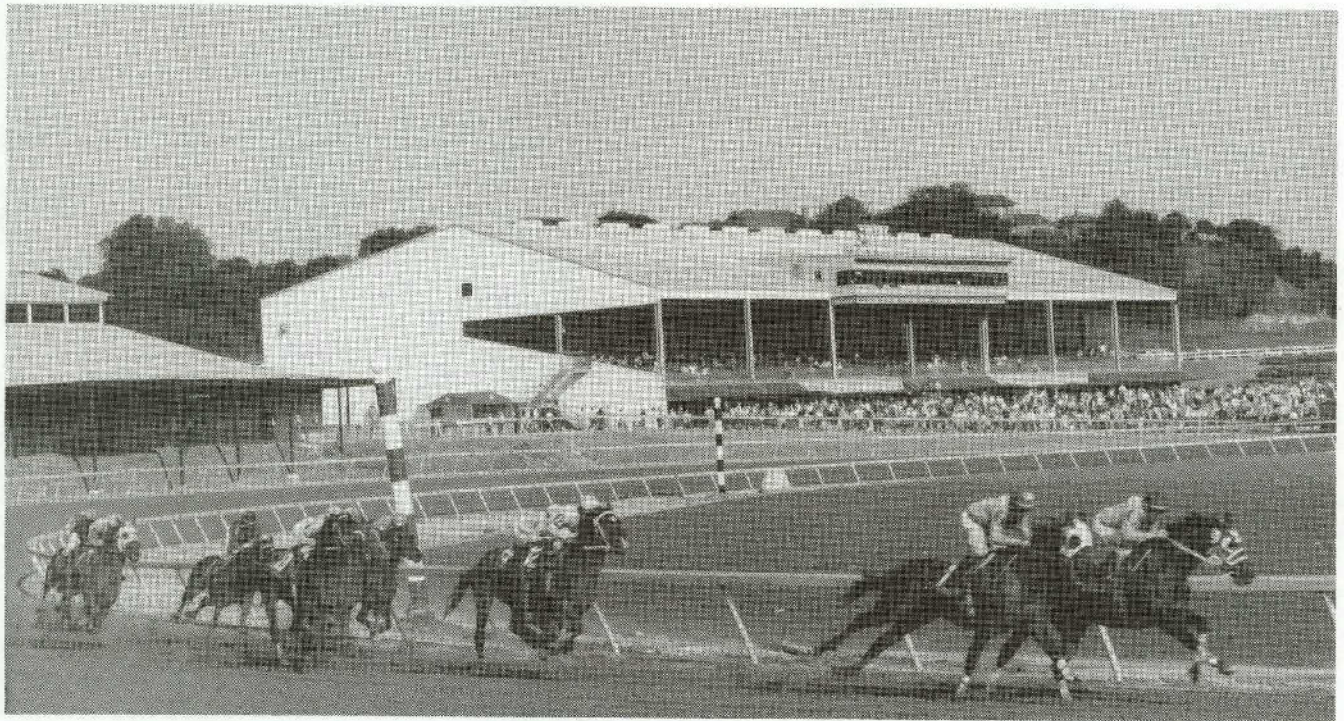
Class 1

Racing since 1991 with a Class 2 license, Trinity Meadows received a Class 1 license effective January 1994 as part of its lawsuit settlement. A condition of the Class 1 license is that the track be expanded to a one mile oval by January of 1996. The track's payroll expense for 1994 for its employees was over \$4.3 million. Over \$724,000 in admissions, sales and real estate taxes was paid.



Note: 6/1/91 Track opened
 9/1/91 Change in pari-mutuel take out structure
 5/20/92 First scratch off lottery ticket sold
 11/7/92 First Lotto ticket sold

	1991	1992	1993	1994
HANDLE				
Live	\$80,490,152	\$111,828,695	\$68,390,436	\$43,348,822
Simulcast	<u>\$781,922</u>	<u>\$16,543,239</u>	<u>\$49,203,680</u>	<u>\$79,044,795</u>
TOTAL	\$81,272,074	\$128,371,944	\$117,594,116	\$122,393,617
RACE DAYS				
Live	57	208	167	207
Simulcast	1	79	203	280
PURSES PAID	\$5,465,388	\$10,975,834	\$10,456,168	\$10,400,377
ATTENDANCE	371,864	687,919	527,047	461,009



Inaugural Meet: 5/29/91

Total Stall Space: 990

Size of Track: 3/4 mile; 80 feet wide

Attendance Record: 17,515 on 6/1/91

Total Seating Capacity: 5,500

Wagering Record \$1,583,453 on 5/2/92

1995 Race Date Schedule:

141 Day Mixed Meet

Saturday, March 25 through Sunday, October 8, Wednesday through Sunday

& Holiday racing on May 29, July 3 & 4, Sept. 4 and Oct. 14

Closed Sept. 6, Oct. 4 & 5, and Oct. 9 - 13

(Race dates are subject to change.)

TRINITY MEADOWS RACEWAY

130 Trinity Meadows Lane, Willow Park, TX 76087

P. O. Box 121789, Fort Worth, TX 76121

Phone 817 441-9240, Fax 817 441-6284

Retama Park

Class 1

Clearly visible just off Interstate 35, Retama Park is about 20 minutes from downtown San Antonio and less than an hour from downtown Austin. On schedule to open on April 7 of 1995, this Class 1 facility expects to employ over 900. It will be one of the largest employers in northeast Bexar County.

Total Stall Space: 1,288

Size of Track: 1 mile oval with 7/8 chute and 550 yard straightaway to finish line
and a 7/8 mile inner turf track

Total Seating Capacity: 5,573

1995 Race Date Schedule:

112 Day Thoroughbred Meet

Friday, April 7 through Sunday, September 17, Wednesday through Sunday
except month of April which will be Friday through Sunday
& Holiday racing on May 29, July 3 & 4 and Sept. 4

Closed July 5 & 6 and Sept. 6

40 Day Quarter Horse Meet

Sept. 28 through Sunday, Dec. 3, Thursday through Sunday

Closed November 23

(Race dates are subject to change.)

RETAMA PARK

One Retama Parkway, Selma, TX 78154

P. O. Box 47535, San Antonio, TX 78265-7535

Phone 800 473-8262, Fax 210 651-7097



RETAMA PARK FEATURES A HACIENDA-STYLE DESIGN, REFLECTING THE CULTURE AND PROUD HERITAGE OF BEXAR COUNTY



A VIEW OF THE 1 MILE DIRT TRACK AND 7/8 MILE INNER TURF TRACK

Lone Star Jockey Club

Class 1

Lone Star was awarded a Class 1 license in October, 1992. In January of 1994, the lawsuit filed by Trinity Meadows to reverse the Commission's decision to award a Class 1 license to Lone Star was settled. Despite the removal of that obstacle, Lone Star has not been able to obtain sufficient financing to complete the project. Lone Star began sitework for its track to be located at Interstate 30 and Belt Line Road in Grand Prairie. In August the Commission staff filed a Motion to Suspend Lone Star's license, pending management and organizational changes. In the fall, a restructuring of Lone Star management occurred after successive shareholder meetings. Lone Star continues to work toward securing its financing to fulfill its commitment to bring world-class racing to Texas.

Longhorn Downs

Class 2

Longhorn Downs, Inc. received a Class 2 license in 1989. The company originally planned to construct a \$35 million facility in Round Mountain. In 1993, Midpointe Racing, L.C., one of the original applicants for a Class 1 license in Dallas County, acquired a 97.5% interest in Longhorn. The Commission approved Longhorn Downs' request to relocate its license to a site in Grand Prairie and Midpointe merged with Lone Star Jockey Club. In late 1994, the Commission approved an agreement between Longhorn Downs and Lone Star Jockey Club that returned control of the Longhorn license to its original owners and the location of the license to Round Mountain.

Lubbock Downs

Class 2

Lubbock Downs received its Class 2 racetrack license in 1989. In 1990, Lubbock Downs voluntarily surrendered its license in lieu of revocation, due to its inability to obtain financing to construct the track. In LO-92-001 (1992), the Attorney General's office held that newly enacted Section 6.19 of the Texas Racing Act required the Commission to reinstate Lubbock Downs' license. The license was reinstated on January 31, 1992. The Commission approved a site change to Slaton in June of 1994. Funding for the project continues to be sought.

**COPIES OF THIS PUBLICATION HAVE BEEN DISTRIBUTED IN COMPLIANCE WITH THE
STATE DEPOSITORY LAW AND ARE AVAILABLE FOR PUBLIC USE THROUGH THE
TEXAS STATE PUBLICATIONS DEPOSITORY PROGRAM AT THE TEXAS STATE
LIBRARY AND OTHER STATE DEPOSITORY LIBRARIES.**

