

5.7
9
43

Report 243

*ANALYTICAL STUDY OF THE
OGALLALA AQUIFER
IN GRAY COUNTY, TEXAS*

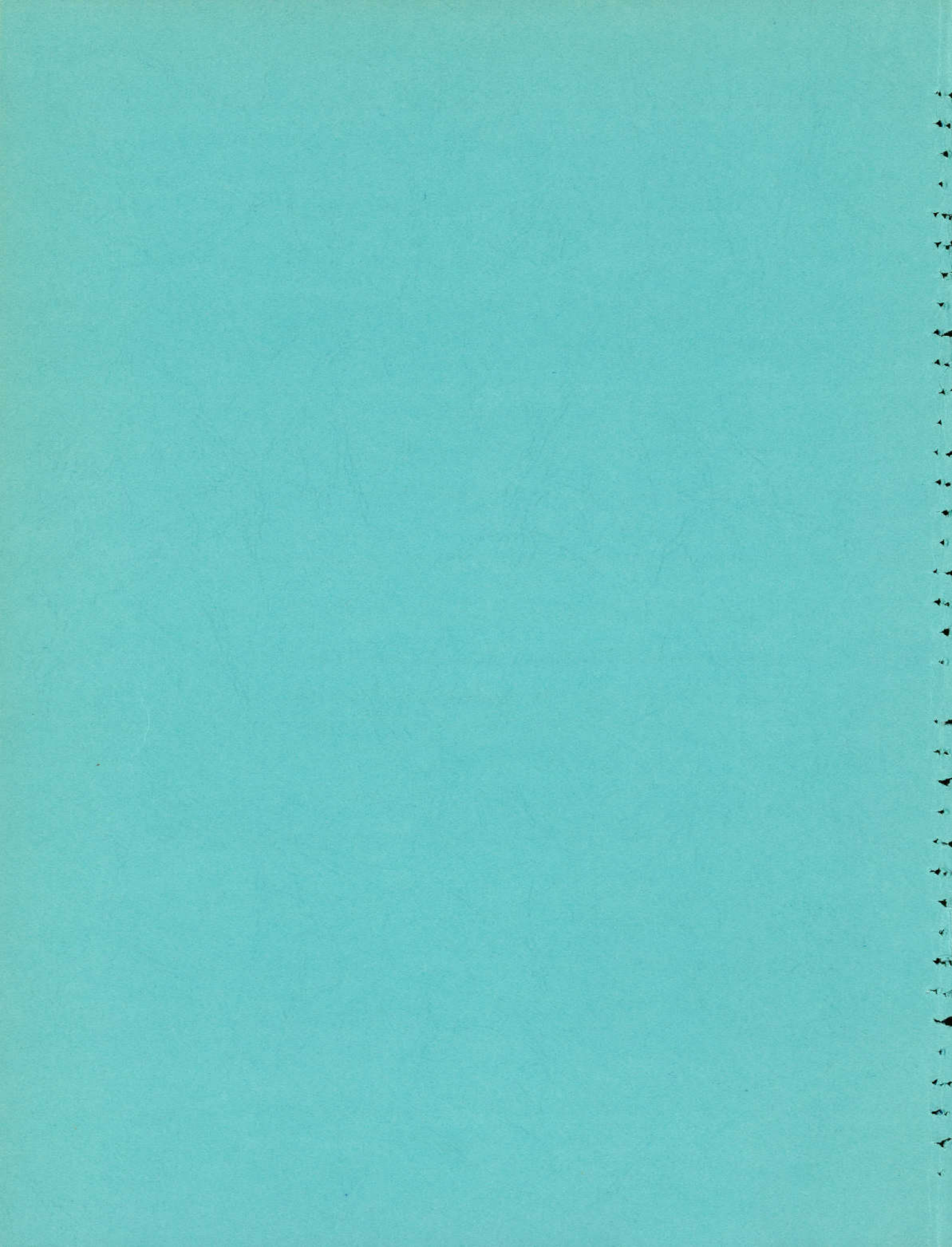
Projections of Saturated Thickness, Volume of Water in
Storage, Pumpage Rates, Pumping Lifts, and Well Yields

Government Documents

MAR 25 1980

Dallas Public Library







TEXAS DEPARTMENT OF WATER RESOURCES

REPORT 243

ANALYTICAL STUDY OF THE OGALLALA AQUIFER IN GRAY COUNTY, TEXAS

Projections of Saturated Thickness, Volume of Water in Storage,

Pumpage Rates, Pumping Lifts, and Well Yields

By

Ann E. Bell and Shelly Morrison

January 1980

TEXAS DEPARTMENT OF WATER RESOURCES

Harvey Davis, Executive Director

TEXAS WATER DEVELOPMENT BOARD

A. L. Black, Chairman

Milton Potts

George W. McCleskey

John H. Garrett, Vice Chairman

Glen E. Roney

W. O. Bankston

TEXAS WATER COMMISSION

Felix McDonald, Chairman

Joe R. Carroll, Commissioner

Dorsey B. Hardeman, Commissioner

Authorization for use or reproduction of any original material contained in this publication, i.e., not obtained from other sources, is freely granted. The Department would appreciate acknowledgement.

Published and distributed
by the
Texas Department of Water Resources
Post Office Box 13087
Austin, Texas 78711

TABLE OF CONTENTS

	Page
CONCLUSIONS	1
INTRODUCTION	1
PURPOSE AND SCOPE OF STUDY	2
NATURE OF THE OGALLALA AQUIFER	3
General Geology	3
Storage Properties	3
Natural Recharge and Irrigation Recirculation	4
PROCEDURES USED TO OBTAIN PROJECTIONS	4
Hydrologic Data Base	4
Projecting the Depletion of Saturated Thickness	5
Mapping Saturated Thickness, and Calculating Volume of Water in Storage.	7
Calculating Pumpage	7
Calculating Pumping Lifts	8
Well-Yield Estimates	9
DISTINCTION BETWEEN PROJECTIONS AND PREDICTIONS.	9
 TABLES AND MAPS PRESENTING RESULTS OF THE STUDY 	
SATURATED THICKNESS AND VOLUME OF WATER IN THE OGALLALA AQUIFER	11
Table of Volume of Water in Storage Corresponding to Mapped Saturated-Thickness Intervals, 1974	12
Map Showing Estimated Saturated Thickness, 1974	13
Table of Volume of Water in Storage Corresponding to Mapped Saturated-Thickness Intervals, 1980	14
Map Showing Projected Saturated Thickness, 1980.	15

TABLE OF CONTENTS—Continued

	Page
Table of Volume of Water in Storage Corresponding to Mapped Saturated-Thickness Intervals, 1990	16
Map Showing Projected Saturated Thickness, 1990	17
Table of Volume of Water in Storage Corresponding to Mapped Saturated-Thickness Intervals, 2000	18
Map Showing Projected Saturated Thickness, 2000	19
Table of Volume of Water in Storage Corresponding to Mapped Saturated-Thickness Intervals, 2010	20
Map Showing Projected Saturated Thickness, 2010	21
Table of Volume of Water in Storage Corresponding to Mapped Saturated-Thickness Intervals, 2020	22
Map Showing Projected Saturated Thickness, 2020	23
POTENTIAL WELL YIELD OF THE OGALLALA AQUIFER	25
Map Showing Estimated Potential Yield, 1974	27
Map Showing Projected Potential Yield, 1980	28
Map Showing Projected Potential Yield, 1990	29
Map Showing Projected Potential Yield, 2000	30
Map Showing Projected Potential Yield, 2010	31
Map Showing Projected Potential Yield, 2020	32
PUMPING LIFTS IN THE OGALLALA AQUIFER	33
Table of Surface Area Corresponding to Mapped Pumping-Lift Intervals, 1974	34
Map Showing Estimated Pumping Lifts, 1974	35
Table of Surface Area Corresponding to Mapped Pumping-Lift Intervals, 1980	36
Map Showing Projected Pumping Lifts, 1980.	37
Table of Surface Area Corresponding to Mapped Pumping-Lift Intervals, 1990	38
Map Showing Projected Pumping Lifts, 1990.	39
Table of Surface Area Corresponding to Mapped Pumping-Lift Intervals, 2000	40

TABLE OF CONTENTS—Continued

	Page
Map Showing Projected Pumping Lifts, 2000	41
Table of Surface Area Corresponding to Mapped Pumping-Lift Intervals, 2010	42
Map Showing Projected Pumping Lifts, 2010.	43
Table of Surface Area Corresponding to Mapped Pumping-Lift Intervals, 2020	44
Map Showing Projected Pumping Lifts, 2020.	45
PUMPAGE FROM THE OGALLALA AQUIFER	47
Table of Pumpage Corresponding to Mapped Decline- Rate Intervals, 1974	48
Map Showing Estimated Rates of Water-Level Decline, 1974	49
Table of Pumpage Corresponding to Mapped Decline-Rate Intervals, 1980	50
Map Showing Projected Rates of Water-Level Decline, 1980.	51
Table of Pumpage Corresponding to Mapped Decline-Rate Intervals, 1990	52
Map Showing Projected Rates of Water-Level Decline, 1990.	53
Table of Pumpage Corresponding to Mapped Decline-Rate Intervals, 2000	54
Map Showing Projected Rates of Water-Level Decline, 2000.	55
Table of Pumpage Corresponding to Mapped Decline-Rate Intervals, 2010	56
Map Showing Projected Rates of Water-Level Decline, 2010.	57
Table of Pumpage Corresponding to Mapped Decline-Rate Intervals, 2020	58
Map Showing Projected Rates of Water-Level Decline, 2020.	59
ACKNOWLEDGEMENTS	60
STAFF INVOLVEMENT	60
METRIC CONVERSIONS TABLE	60
SELECTED REFERENCES	61

ANALYTICAL STUDY OF THE OGALLALA AQUIFER IN GRAY COUNTY, TEXAS

Projections of Saturated Thickness, Volume of Water in Storage, Pumpage Rates, Pumping Lifts, and Well Yields

CONCLUSIONS

The Ogallala aquifer in Gray County contained approximately 8.2 million acre-feet (10.1 km^3) of water in 1974. Historical pumpage has exceeded 100,000 acre-feet (0.12 km^3) annually, which is approximately four times the rate of natural recharge to the aquifer in the county. This overdraft is expected to continue, ultimately resulting in reduced well yields, reduced acreage irrigated, and reduced agricultural production.

There is a very uneven distribution of ground water in the county. Some areas have ample ground-water resources to support current usage through the year 2020; whereas, in other areas of the county, ground water is currently in short supply.

To obtain maximum benefits from the remaining ground-water resources, Gray County water users should implement all possible conservation measures so that the remaining ground-water supply is used in the most prudent manner possible and with the least amount of waste.

INTRODUCTION

Gray County is situated in the northeastern part of the Southern High Plains of Texas. Pampa, the county seat, is located approximately 55 miles (88 km) northeast of Amarillo. The county contains an area of about 934 square miles ($2,419 \text{ km}^2$) and has a population of approximately 25,000.

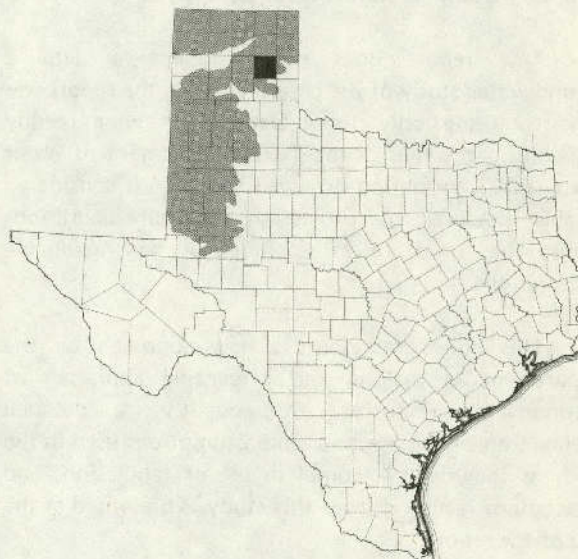
Gray County is one of the leading producers of agricultural crops in the State with a total farm income of over \$33 million annually. Leading crops in the county are grain sorghums, wheat, corn, and alfalfa. Numerous agribusinesses, including livestock feeding, meat packing, tanning, and sale of irrigation equipment

supplies, feed and seed, and fertilizer, also make significant contributions to the total county income.

Ground water is extremely important to the economy of the county inasmuch as most of the crops are irrigated with ground water. Additionally, the water used by rural residents, municipalities, and local industries is mostly ground water.

The principal source of fresh ground water in the county is the Ogallala aquifer. During the past three decades, the withdrawal of ground water has greatly exceeded the natural recharge to the aquifer. If this overdraft continues, the aquifer ultimately will be depleted to the point that it may not be economically feasible to produce water for irrigation.

This is one of numerous planned county studies covering the declining ground-water resource of the



Location of Gray County, and Extent of the
Ogallala Aquifer in Texas

Ogallala aquifer in the High Plains of Texas. The report contains maps, charts, and tabulations which reflect estimates of the volume of water in storage in the Ogallala aquifer in Gray County and the projected depletion of this water supply by decade periods through the year 2020. The report also contains estimates of pumpage, pumping lifts, and other data related to current and future water use in the county. However, the report does not attempt to project that portion of the volume of water in underground storage which may be ultimately recoverable.

PURPOSE AND SCOPE OF STUDY

This study resulted from an immediate need for information to illustrate to the High Plains water users that the ground-water supply is being depleted. It is hoped that this study will help persuade the water users to implement all possible conservation measures, so that the remaining ground-water supply will be used in the most prudent manner possible and with the least amount of waste.

The study was also conducted to provide information to local, State, and federal officials for their use in implementing plans to alleviate the water-shortage problem in the High Plains of Texas.

These immediate needs for current information have resulted in a concerted effort by the Texas Department of Water Resources to utilize high-speed computers to conduct evaluation and projection studies of ground-water resources. The results of one of these computer studies is contained in this report.

This report does not represent a detailed ground-water study of the county; rather, the report was prepared using only those data which were readily available in the files of the Texas Department of Water Resources. Information provided for 1974 is considered reliable; however, the projections of future conditions should be used only as a guide to reasonable expectations.

This study represents a new approach by the Department in making and presenting appraisals of ground-water resources. Consequently, a detailed explanation of the methods and assumptions used in the study is included. A complete set of tabulations and illustrations resulting from this study is presented at the end of the report.

The illustrations were prepared to answer four questions believed to be of prime importance to the

Gray County landowners and water users. These questions, and methods by which a set of answers can be obtained from the illustrations, are as follows:

1. Question: How much water is in storage under any given tract of land in the county and what is expected to happen to this water in the future?

Answer: First, determine the approximate location of the tract on the most current (1974) map of saturated thickness. Read the value of the contour line at this location (if midway between two contour lines, take an average of the two). This thickness value can then be converted to the approximate volume of water in storage, in acre-feet per surface acre, by multiplying it by the coefficient of storage of 0.15, or 15 percent. To obtain estimates of what can be expected in the future, the same procedure can be followed by using the maps which illustrate projected saturated thickness in the years 1980, 1990, 2000, 2010, and 2020.

2. Question: What can be expected to happen to well yields if the saturated thickness diminishes as illustrated by the maps?

Answer: Well yields are expected to decline as the aquifer thins; therefore, a map of estimated well yields has been prepared for each year of the study. The landowner need only find the approximate location of his property on the well-yield map that applies to the year in question and read the well-yield estimates directly from the map.

3. Question: With energy cost increasing, pumping lifts (pumping levels) are becoming more and more important. What are the estimates of current pumping lifts and what are they expected to be in the future?

Answer: Contour maps depicting estimated pumping lifts have been prepared for each year of the study. These maps are contoured in feet below land surface. The landowner need only find the approximate location of his property on the map that applies to the year in question to read the pumping-lift estimates.

4. Question: If an all-out effort is made to conserve ground-water resources, how can

landowners and water users determine how they are doing compared to the projections in the study?

Answer: Using the maps that show rates of water-level declines, the landowners and water users can determine what the changes in water levels are in their area and what they are projected to be in the future. This can be accomplished by finding the approximate location of their property on the map pertaining to the year in question and by reading the estimates of water-level changes which are recorded in feet. To determine how he is doing from year to year, the landowner or water user can make measurements of depth to water in his own wells or obtain copies of measurements made by the Department or the ground-water district for his area. These measurements can then be compared to the projected values on the map nearest to the year of interest to obtain an estimate of the effectiveness of the conservation efforts.

NATURE OF THE OGALLALA AQUIFER

Because thorough understanding of the Ogallala aquifer is not necessary for the water user, the following discussion of aquifer geology and hydrology is rather general. Readers interested in pursuing the subject in more detail may do so from the numerous reports which have been published on the Ogallala. Most of these publications are included in the list of selected references of this report.

General Geology

Fresh ground water in Gray County is obtained principally from the Ogallala Formation of Pliocene age. Water in the Ogallala Formation is unconfined and is contained in the pore spaces of unconsolidated or partly consolidated sediments.

The Ogallala Formation principally consists of interfingering bodies of fine to coarse sand, gravel, silt, and clay—material eroded from the Rocky Mountains which was carried southeastward and deposited by streams. The earliest sediments, mainly gravel and coarse sand, filled the valleys cut in the pre-Ogallala surface. Pebbles and cobbles of quartz, quartzite, and chert are typical of these early sediments. After filling the valleys,

deposition continued until the entire area that is now the Texas High Plains was covered by sediments from the shifting streams.

The upper part of the formation contains several hard, caliche-cemented, erosionally resistant beds called the "caprock." A wind-blown cover of fine silt, sand, and soil overlies the caprock.

The Ogallala deposits overlie rocks of Permian age. These rocks, principally red shale, serve as a nearly impermeable floor for the aquifer. On a broad scale, the erosional surface at the top of the Permian rocks dips gently (about 10 feet per mile [2 m/km]) toward the southeast, similar to the slope of the land surface. In general, however, this pre-Ogallala surface had greater relief than the present land surface. Low hills and wide valleys which contain deep, narrow stream channels are typical features of the Permian erosional surface. Because the Ogallala was deposited on top of this irregular surface, the formation is very thin in some areas and very thick in others. Often this contrast occurs in relatively short distances.

The Canadian River has cut deeply through the Ogallala Formation in the northern part of the Texas High Plains area. The valley effectively separates the formation geographically into two units having little hydraulic interconnection. Erosion has also removed the Ogallala from much of its former extent to the east, and to the west in New Mexico. As a result, the Southern High Plains, although relatively flat, stands in high relief and is hydraulically independent of adjacent areas. For this reason, coupled with the scarcity of local rainfall, water that is being withdrawn from the aquifer cannot be replaced quickly by natural recharge and is in effect being mined.

Storage Properties

The coefficient of storage of an aquifer is defined as the volume of water released from or taken into storage per unit surface area of the aquifer per unit change in the component of head normal to that surface. In water-table aquifers such as the Ogallala, the coefficient of storage is nearly equal to the specific yield, which is defined as the quantity of water that a formation will yield under the force of gravity, if it is first saturated and then allowed to drain, the quantity of water being expressed as a percentage of the volume of the material drained.

A coefficient of storage of 15 percent has been selected for use in this study based on past studies and

the results of numerous aquifer tests published in Texas Water Development Board Report 98 (Myers, 1969). The following chart shows the volumes of water corresponding to various amounts of aquifer saturated thickness, based on a storage coefficient of 15 percent. These are the approximate amounts of water that would drain from the aquifer material by gravity flow if the entire saturated thickness could be drained.

SATURATED THICKNESS (feet)	VOLUME OF WATER IN STORAGE (acre-feet, per surface acre)
25	3.75
50	7.50
75	11.25
100	15.00
150	22.50
200	30.00
250	37.50
300	45.00
400	60.00
500	75.00

Natural Recharge and Irrigation Recirculation

Recharge is the addition of water to an aquifer by either natural or artificial means. Natural recharge results chiefly from infiltration of precipitation. The Ogallala aquifer in Gray County receives natural recharge by precipitation that falls within the county and in adjoining areas.

The amount and rate of natural recharge from precipitation depend on the amount, distribution, and intensity of the precipitation; the amount of moisture in the soil when the rain or snowmelt begins; and the temperature, vegetative cover, and permeability of the materials at the site of infiltration. Because of the wide variations in these factors, it is difficult to estimate the amount of natural recharge to the ground-water reservoir. Estimates of annual natural recharge to the Ogallala aquifer made by Barnes and others (1949, p. 26-27) indicate only a fraction of an inch. Theis (1937, p. 546-568) suggested less than half an inch, and Havens (1966, P. F1), in a study of the Ogallala in New Mexico, indicated about 0.8 inch (2 cm) per year.

The authors of this report believe that recharge from precipitation may be more than these earlier estimates, due to changes in the soil and land surface that have accompanied large-scale irrigation development in the county. Some of the farming practices which are believed to have altered the recharge rate are: clearing the land of deep-rooted native vegetation; deep plowing of fields, which eliminates compacted

zones in the soil (locally called "hard pans"), and the plowing of playa lake bottoms and sides; bench leveling, contour farming, and terracing; maintaining a generally higher soil moisture condition by application of irrigation water prior to large rains; and increasing the humus level in the root zone by plowing under a large amount of foliage from crops grown under irrigation.

Obtaining a reliable estimate of the present recharge rate is further complicated by the consideration which must be given to irrigation recirculation. A substantial portion of the water pumped from the Ogallala for irrigation percolates back to the aquifer. This does not constitute an additional supply of water, but reduces the net depletion of the aquifer. As with natural recharge, many factors are involved in making estimates of recirculation. Some of these factors are the rate, amount, and type of irrigation application; the soil type and the infiltration rate of the soil profile in the root zone; the amount of moisture in the soil prior to the irrigation application; the type of crop being grown, its root development, and its moisture extraction pattern; and the climatic conditions during and following the irrigation application. Tentative estimates of the actual amounts of recharge and irrigation recirculation in Gray County will be found in a subsequent section on "Calculating Pumpage."

PROCEDURES USED TO OBTAIN PROJECTIONS

Hydrologic Data Base

The Texas Department of Water Resources and the Panhandle Ground Water Conservation District No. 3 cooperatively maintain a network of water level observation wells in Gray County. Records from these wells provided the principal data base used in this study. This data base was supplemented in some areas with records from water well drillers' logs collected by both the District and the Department.

The data base included: (1) measurements of the depth to water below land surface, which have been made annually in the wells in the observation network; (2) the dates these measurements were made; and (3) the depth from land surface to the base of the Ogallala aquifer (In many cases, this was identical to the well depth). To facilitate automatic data processing with modern, high-speed computers, the data base also included a unique number for each well and the geographical coordinates of each well location.

Wells chosen from the data base for use in obtaining projections of future conditions were those in which depth to the base of the aquifer could be determined or estimated, and those needed to provide spaced data coverage in the county. Locations of the wells that were selected and used for control are shown on the various maps in this report.

Projecting the Depletion of Saturated Thickness

The water-use patterns between 1960 and 1972 as reflected in the changes in water levels in wells measured in the High Plains of Texas were used as the principal data source for developing an aquifer depletion schedule. The depletion schedule generally reflects average precipitation and precipitation distribution in the area for the duration of the study period. Additionally, in developing and applying the depletion schedule, adjustments through time were made to reflect the effects of depletion of the aquifer on its ability to yield water. That is, as the aquifer's saturated thickness decreases, its ability to yield water to wells is reduced, the well yields decline, less water is pumped, and there results a lessened rate of further aquifer depletion.

The aquifer's hydraulics are such that if a well penetrates the total saturated section and the pump is sized to produce the maximum the aquifer will yield, the well yield will decline at a disproportionately greater rate than the reduction in saturated thickness. Actually, the remaining well yield expressed as a percentage of former yield will be only about half of the remaining saturated thickness expressed as a percentage of former thickness. For example, a well with 60 feet (18.3 m) of saturated section and a maximum yield of 900 gallons per minute (56.8 l/s) will probably yield only 225 gallons per minute (14.2 l/s) when the saturated section is reduced to 30 feet (9.1 m).

The depletion schedule for Gray and surrounding counties was developed in the following manner:

1. The records for all water level observation wells for the years 1960 through 1972 in Armstrong, Carson, Donley, Gray, Oldham, Potter, Randall, and Wheeler Counties were separated from the master file. These counties have similar soil types, cropping patterns, depths to water, saturated thickness, and climatic conditions.
2. These well records were then sorted into groups according to the saturated thickness in each well as of 1966 (the middle year).

Each group included records of all wells in a 20-foot (6.1-meter) range of saturated thickness. (Ranges are shown in the tabulation below.)

3. The average decline in water level was calculated for each year for each well group, and these decline values were adjusted to remove the effects of each year's deviation from long-term average precipitation.
4. The average annual decline in water level for the total period (1960-72) was calculated for each well group, incorporating the adjustments for departure from average precipitation.

From the foregoing procedure, the following depletion schedule was developed (no depletion was allowed for areas with 10 feet or less of saturated thickness):

RANGE OF SATURATED THICKNESS (feet)	AVERAGE ANNUAL WATER-LEVEL DECLINE, 1960-72 (feet)
0 to 10	0.00
10 to 20	.40
20 to 40	.85
40 to 60	1.47
60 to 80	1.60
80 to 100	1.80
100 to 120	2.07
120 to 140	2.56
140 to 160	2.50
160 to 180	2.47
180 to 200	3.04
200 to 220	2.97
220 to 240	2.87
240 to 260	3.49
260 to 280	4.05

Based on this depletion schedule, a computer program was written to calculate future saturated thickness at individual well sites. The following problem is presented to show the computational procedures used.

Problem: A well has a saturated thickness of 110 feet in 1974 and one wants to project what the saturated thickness will be in this well for every year to the year 2020.

- Factors:**
1. The beginning saturated thickness is 110 feet in 1974.
 2. The average decline rate is 2.07 feet per year for wells with saturated sections of 100 to 120 feet.

3. The average decline rate is 1.80 feet per year for wells with saturated sections of 80 to 100 feet.
4. The average decline rate is 1.60 feet per year for wells with saturated sections of 60 to 80 feet.
5. The average decline rate is 1.47 feet per year for wells with saturated sections of 40 to 60 feet.
6. The average decline rate is 0.85 foot per year for wells with saturated sections of 20 to 40 feet.
7. The average decline rate is 0.40 foot per year for wells with saturated sections of 10 to 20 feet.
8. The time interval is 1974 through 2020.

The projected saturated thicknesses in the subject well are calculated and shown in the following table:

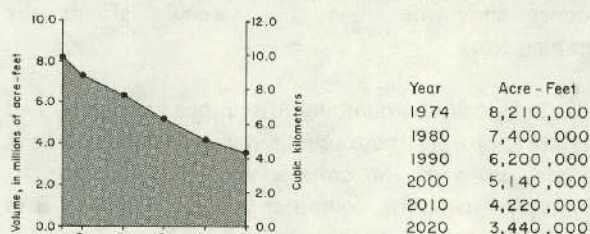
YEAR	SATURATED THICKNESS, BEGINNING OF YEAR (feet)	AVERAGE DECLINE RATE (feet)	SATURATED THICKNESS, END OF YEAR (feet)
1974	110.00	2.07	107.93
1975	107.93	2.07	105.86
1976	105.86	2.07	103.79
1977	103.79	2.07	101.72
1978	101.72	2.07	99.65
1979	99.65	1.80	97.85
1980	97.85	1.80	96.05
1981	96.05	1.80	94.25
1982	94.25	1.80	92.45
1983	92.45	1.80	90.65
1984	90.65	1.80	88.85
1985	88.85	1.80	87.05
1986	87.05	1.80	85.25
1987	85.25	1.80	83.45
1988	83.45	1.80	81.65
1989	81.65	1.80	79.85
1990	79.85	1.60	78.25
1991	78.25	1.60	76.65
1992	76.65	1.60	75.05
1993	75.05	1.60	73.45
1994	73.45	1.60	71.85
1995	71.85	1.60	70.25
1996	70.25	1.60	68.65
1997	68.65	1.60	67.05
1998	67.05	1.60	65.45
1999	65.45	1.60	63.85
2000	63.85	1.60	62.25
2001	62.25	1.60	60.65
2002	60.65	1.60	59.05
2003	59.05	1.47	57.58
2004	57.58	1.47	56.11
2005	56.11	1.47	54.64
2006	54.64	1.47	53.17
2007	53.17	1.47	51.70
2008	51.70	1.47	50.23
2009	50.23	1.47	48.76
2010	48.76	1.47	47.29
2011	47.29	1.47	45.82
2012	45.82	1.47	44.35
2013	44.35	1.47	42.88
2014	42.88	1.47	41.41
2015	41.41	1.47	39.94
2016	39.94	.85	39.09
2017	39.09	.85	38.24
2018	38.24	.85	37.39
2019	37.39	.85	36.54
2020	36.54	.85	35.69

Similar computations were made for each of the selected data-control wells in Gray County, and the saturated-thickness values for 1974, 1980, 1990, 2000,

2010, and 2020 were extracted from this data set for use in further calculations and mapping.

Mapping Saturated Thickness, and Calculating Volume of Water in Storage

To obtain estimates of the volume of water in storage in the Ogallala aquifer, an electronic digital computer was used to construct maps which reflect the saturated thickness of the aquifer for those years included in the study. These maps were then refined by the computer to reflect the number of acres corresponding to each range of saturated thickness. The number of acres for each range was multiplied by the saturated thickness in feet for that range and then by the coefficient of storage (0.15 or 15 percent), to yield an estimate of the volume of water in storage in each saturated-thickness range. Totalling these volumes produced an estimate of the volume of water in storage in the county. The current (1974) and projected volume estimates are shown in the following graph:



Estimated Volume of Water in Storage

Preparing a data base and writing the necessary programs for the computer to use in constructing the saturated-thickness maps and in making the necessary calculations is time consuming; however, once the data base is prepared and programs written, the computer can perform in a few hours calculations that would have required many years of manual effort.

A generalized description of the methodology used in mapping and in computing water volume follows: A base map with a scale of 1 inch equals 2 miles (1:125,000) was selected to prepare data for computer processing. All data points (observation wells) were plotted on these base maps by hand and assigned identifying numbers. A machine called a *digitizer* was then used to translate these mapped location data (well locations, county boundaries, etc.) into information processible by the computer. To accomplish this, a latitude and longitude coordinate was recorded on each base map as a central reference point, and all data points and county boundaries were then digitized; that is, measurements were made by the digitizer to reference these data points and boundaries to the initial latitude and longitude coordinate. Then the digitized information was processed by the computer and the maps were re-created by a computer-driven plotter. The computer-plotted image maps were ultimately checked

against the hand-constructed maps to verify that the data were plotted accurately.

The assignment of a unique number to each data point (observation well) on the base maps made it possible to machine process the data related to these points and to plot these data back on the maps at the proper location.

To compute the volume of water in storage, the computer was instructed to subdivide the county into squares measuring approximately 0.5 mile (0.8 km). The known saturated-thickness values obtained from the data points were filled into the squares in which the data points were located. Based on these known values, the computer filled in a weighted-average value for each remaining square, taking into consideration all known values within a radius of 7 miles (11 km). After this step was completed, the computer then counted the numbers of squares having equal values, thus obtaining the approximate area in square miles (later converted to acres) corresponding to each range of saturated thickness. As previously stated, the number of acres in each 25-foot (7.6-meter) range of saturated thickness was multiplied by the corresponding saturated-thickness value and the storage coefficient (0.15 or 15 percent) to obtain the approximate volume of water in acre-feet in that saturated-thickness range.

Although the calculations were made by the computer from information stored in its image field, the data in the image field were printed out in the form of contoured saturated-thickness maps, which are reproduced in this report. Facing each saturated-thickness map in the report is a corresponding tabulation of the approximate volume of water in storage.

Calculating Pumpage

Estimates of current pumpage were obtained in this study by calculating the storage capacity of the dewatered section of the Ogallala aquifer as reflected in changes in the annual depth-to-water measurements made in the water level observation wells. Factors for natural recharge and irrigation recirculation were then added to these volumetric figures to obtain more realistic pumpage estimates.

The step-by-step procedure involved in making pumpage estimates is similar to the procedures used in calculating the estimates of volume of water in storage; therefore, a more general explanation follows.

Change in water level (decline) maps for the aquifer were made by the computer for the years considered. From these maps, the volume of desaturated material was multiplied by the number of acres corresponding to each 0.25-foot (.076-meter) range of decline and then multiplied by the storage coefficient of the aquifer (0.15 or 15 percent), which resulted in an estimate of the volume of water taken from storage for each decline range. Estimates for natural recharge and irrigation recirculation were added to these values to obtain estimates of pumpage.

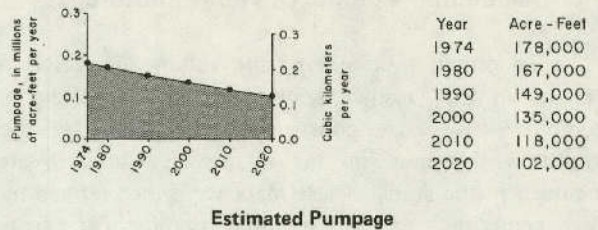
An attempt was made to obtain a reliable estimate of the natural recharge and recirculation for use in this study. This involved obtaining an estimate of the amount of water required by each of the major crops grown in the area. These values, generally referred to as "duty of water," were obtained from Texas Agricultural Experiment Stations located in the High Plains area. The duty of water figure for each major crop was multiplied by the number of crop acres, and the resulting numbers were added together to yield an estimate of the total crop water demand.

The amount of precipitation which fell just prior to and during the growing season was subtracted from the total water demand estimate. The difference between these values should equal that amount which would have been supplied by irrigation, which will be referred to as irrigation makeup water.

The volume figure represented by the dewatered section was then compared to the volume of water which should have been supplied to crops by irrigation makeup water. In all tests, the volume of water represented by the depletion of the aquifer was considerably less than the makeup water estimate. This difference was attributed to irrigation recirculation and natural recharge.

Various combinations of estimates for natural recharge and recirculation were added to the volume represented by aquifer depletion, in an attempt to obtain comparable values with the makeup water estimated for the test years. One-half inch (1.3 cm) per year of natural recharge added to the volume represented by the depletion of the aquifer, and then adding 10 percent of this for recirculation, most nearly equaled the makeup water estimated in the largest number of instances in Gray County and in adjoining counties with similar conditions.

These amounts were added to the previously calculated storage capacity of the dewatered section to obtain estimates for current (1974) and future pumpage. The following graph shows the current and projected estimates of pumpage:



Calculating Pumping Lifts

The pumping lift (pumping level) is the depth from land surface to the water level in a pumping well; it is equal to the depth of the static water level plus the drawdown due to pumping. The amount of pumping lift largely determines the amount of energy required to produce the water, and thus strongly affects the pumping costs.

In calculating pumping lifts, procedures were used that are similar to those used in making estimates of the volume of water in storage and the estimates of pumpage. Again, the computer and original data base were used as previously described.

In making estimates of pumping lifts, it was assumed (1) that the yield of each pumping well is 900 gallons per minute (56.8 l/s) except as limited by the capacity of the aquifer (this conforms with the historical trend of equipping new wells with 8-inch [20-centimeter] or smaller pumps), (2) that the specific well yield is 15 gallons per minute per foot of drawdown (3.1 [l/s]/m), and (3) that once the well yield equals the capacity of the aquifer, the well will continue to be produced at a rate near the capacity of the aquifer until pumping lifts are within 10 feet (3m) of the base of the aquifer. After that time, it is assumed that the pumping lift will remain constant because of greatly diminished well yields. It should be noted that this 10-foot (3-meter) minimum is somewhat arbitrarily chosen, as one cannot predict accurately the minimum saturated thickness that will be feasible for producing irrigation water under future economic conditions.

The above assumptions restrict the drawdown in wells to a maximum of 60 feet (18.3 m); that is, the maximum well yield of 900 gallons per minute (56.8 l/s) divided by specific well yield of 15 gallons per minute per foot (3.1 [l/s]/m) equals 60 feet (18.3 m) of maximum drawdown.

Based on the above assumptions, pumping lifts were calculated separately for each of the selected

data-control wells in the county. The factors involved were the historical and projected saturated-thickness values, the historical and projected static water levels, and the drawdown value assigned to the Gray County area.

In all areas where the aquifer's saturated thickness was 70 feet (21.3 m) or greater (areas where a well, pumped at full capacity, would be drawn down 60 feet [18.3 m] to yield 900 gallons per minute [56.8 l/s]), the computer was instructed to add 60 feet (18.3 m)—the drawdown—to the static water level to determine pumping lift. For a well with a saturated thickness of less than 70 feet (21.3 m), the pumping lift was calculated by subtracting 10 feet (3m) from the depth of the well (base of the aquifer). These calculations were made for each year of record to be reported (1974, 1980, 1990, 2000, 2010, and 2020) for each well. The pumping-lift values were stored in the computer and printed out in the form of contour maps. Additionally, the surface area corresponding to each interval between the mapped contours was calculated and printed out in tabular form.

Well-Yield Estimates

Estimates of the rate, in gallons per minute, at which the Ogallala aquifer should be capable of yielding water to wells in various areas of the county are presented on maps for each year of record reported (1974, 1980, 1990, 2000, 2010, and 2020). These well-yield estimates are based on capabilities of the aquifer to yield water to irrigation wells of prevailing construction as reflected by the very large number of pumping tests which have been conducted in various saturated-thickness intervals in the Texas High Plains. The estimates are adjusted to reflect the expected decreases in well yields through time due to the reduced saturated thickness as depletion of the aquifer progresses.

The well-yield estimates are subject to deviations caused by localized geological conditions. The Ogallala is not a homogeneous formation; that is, the silt, clay, sand, and gravel which generally comprise the formation vary from place to place in thickness of layers, layering position, and grain-size sorting. The physical composition of the formation material can drastically affect the ability of the formation to yield water to wells. As an example, in areas where the saturated portion of the formation is comprised of thick beds of coarse and well-sorted grains of sand, the well yields probably will exceed the estimates shown on the maps. In other localized areas, the saturated portion of the

formation may be comprised principally of thick beds of silt and clay which can be expected to restrict well yields to less than those shown on the maps.

The following can be used as a general guide in Gray County in estimating well yields based on saturated thickness:

SATURATED THICKNESS (feet)	WELL YIELD (gallons per minute)
Less than 20	Less than 100
20 to 30	100 to 250
30 to 40	250 to 500
40 to 60	500 to 800
60 to 80	800 to 1,000
More than 80	More than 1,000

The maps presented in this report are intended for use as general guidelines only and are not recommended for use in determining water availability when buying and selling specific tracts of land. Inasmuch as the availability of ground water constitutes a large portion of the price of land bought and sold in this area, it is recommended that a qualified ground-water hydrologist be consulted to make appraisals of ground-water conditions when such transactions are contemplated.

DISTINCTION BETWEEN PROJECTIONS AND PREDICTIONS

The actions of the Gray County water user will determine whether the projections of this study come to pass, as the rate of depletion of the ground-water resource is determined by the rate of water use. The authors have not made predictions of what will occur, but have furnished projections based on past trends and presently available information.

There are many unpredictable factors which can influence the future rates of withdrawal of ground water from the Ogallala aquifer for irrigation farming. These factors include: (1) the amounts and distribution of precipitation which will be received in the area in the future; (2) federal crop acreage controls or the lack of these; (3) the price and demand for food and fiber grown in the area; (4) the cost and availability of energy to produce water from the aquifer; (5) farm labor cost and availability of farm labor; (6) results of continuing research that seeks to develop more frugal water-application methods for irrigation, crops having less water demand, and methods for inducing clouds to yield more water as rain; and (7) most important, the degree to which feasible soil and water conservation measures are employed by the High Plains irrigator. Any of these factors could appreciably influence the rate of

use of ground water in the future; however, the projections in this study provide a reasonable set of

general expectations on the further depletion of the aquifer.

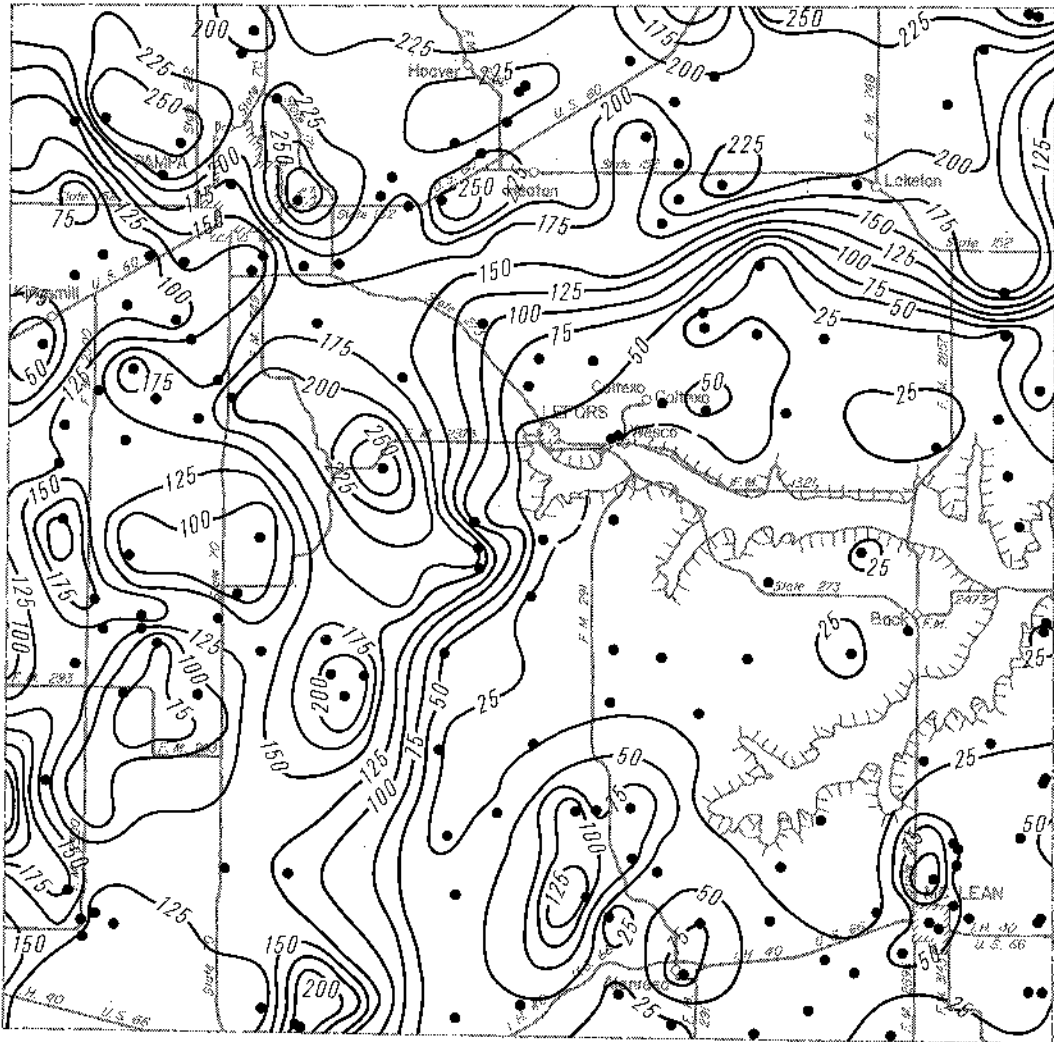
**SATURATED THICKNESS AND VOLUME OF
WATER IN THE OGALLALA AQUIFER**

1974

Volume of Water in Storage Corresponding
to Mapped Saturated-Thickness Intervals

(Coefficient of Storage: 15 percent)

<u>MAPPED SATURATED- THICKNESS INTERVAL (feet)</u>	<u>SURFACE AREA (acres)</u>	<u>VOLUME OF WATER IN STORAGE (acre-feet)</u>
0- 25	104,624	266,312
25- 50	81,266	437,282
50- 75	45,130	421,563
75-100	44,427	586,060
100-125	47,212	794,669
125-150	55,479	1,145,115
150-175	45,754	1,109,103
175-200	40,320	1,139,934
200-225	49,929	1,574,156
225-250	13,868	488,061
250-275	5,851	227,515
275-300	450	18,825
TOTAL	<u>534,310</u>	<u>8,208,595</u>



EXPLANATION

- Well used for control
- 150 —
Line showing approximate saturated thickness of the Ogallala aquifer, in feet.
- Interval is 25 feet (7.62m)

0 5 10 Miles

0 4 8 16 Kilometers



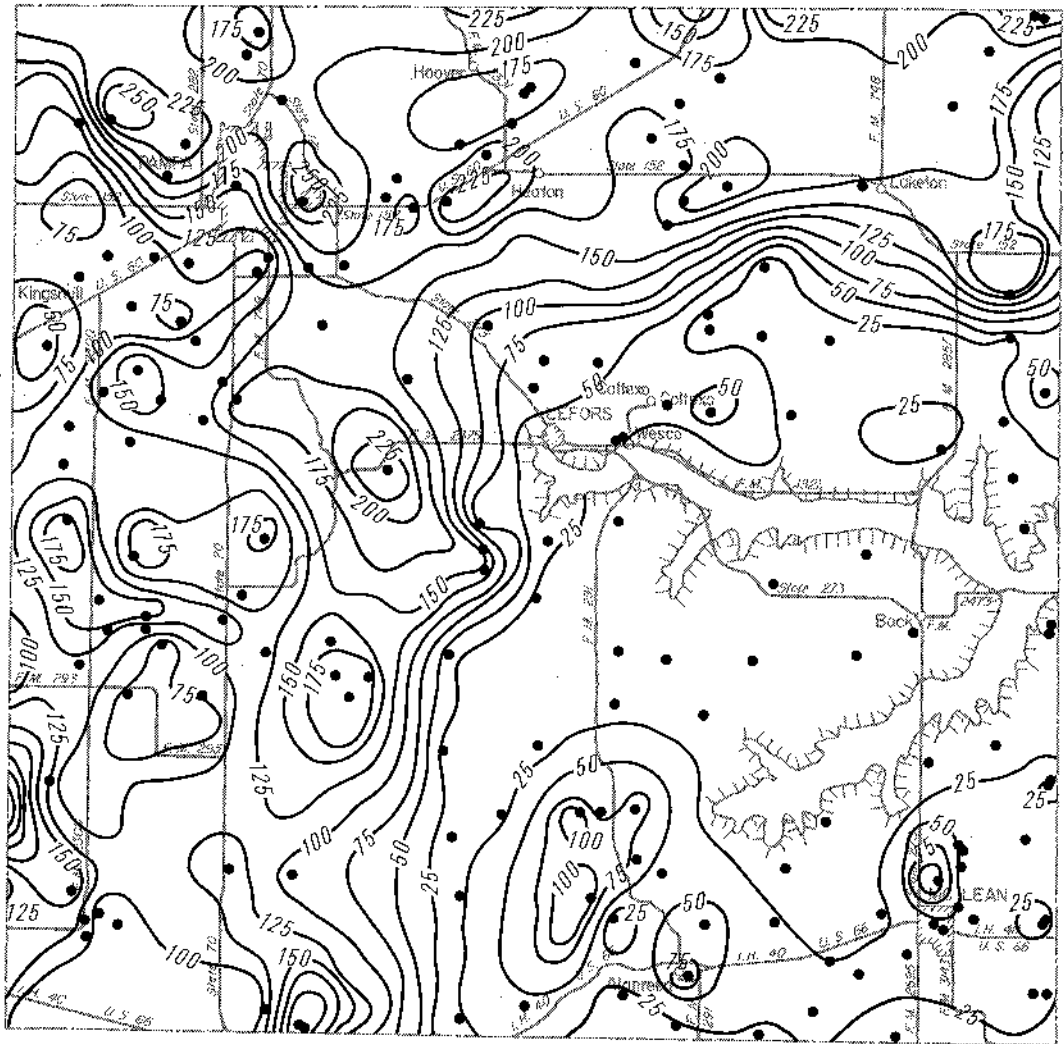
1974
Estimated Saturated Thickness

1980

Volume of Water in Storage Corresponding
to Mapped Saturated-Thickness Intervals

(Coefficient of Storage: 15 percent)

MAPPED SATURATED- THICKNESS INTERVAL (feet)	SURFACE AREA (acres)	VOLUME OF WATER IN STORAGE (acre-feet)
0— 25	122,965	300,519
25— 50	76,972	410,046
50— 75	46,804	436,501
75—100	51,586	675,322
100—125	54,212	919,513
125—150	55,365	1,134,115
150—175	40,488	985,147
175—200	57,285	1,606,496
200—225	21,636	682,452
225—250	6,199	219,081
250—275	798	30,465
TOTAL	534,310	7,399,657



EXPLANATION

● Well used for control

— 150 —

Line showing approximate saturated thickness of the Ogallala aquifer, in feet.

Interval is 25 feet (7.62m)

0 5 10 Miles

0 4 8 16 Kilometers



1980

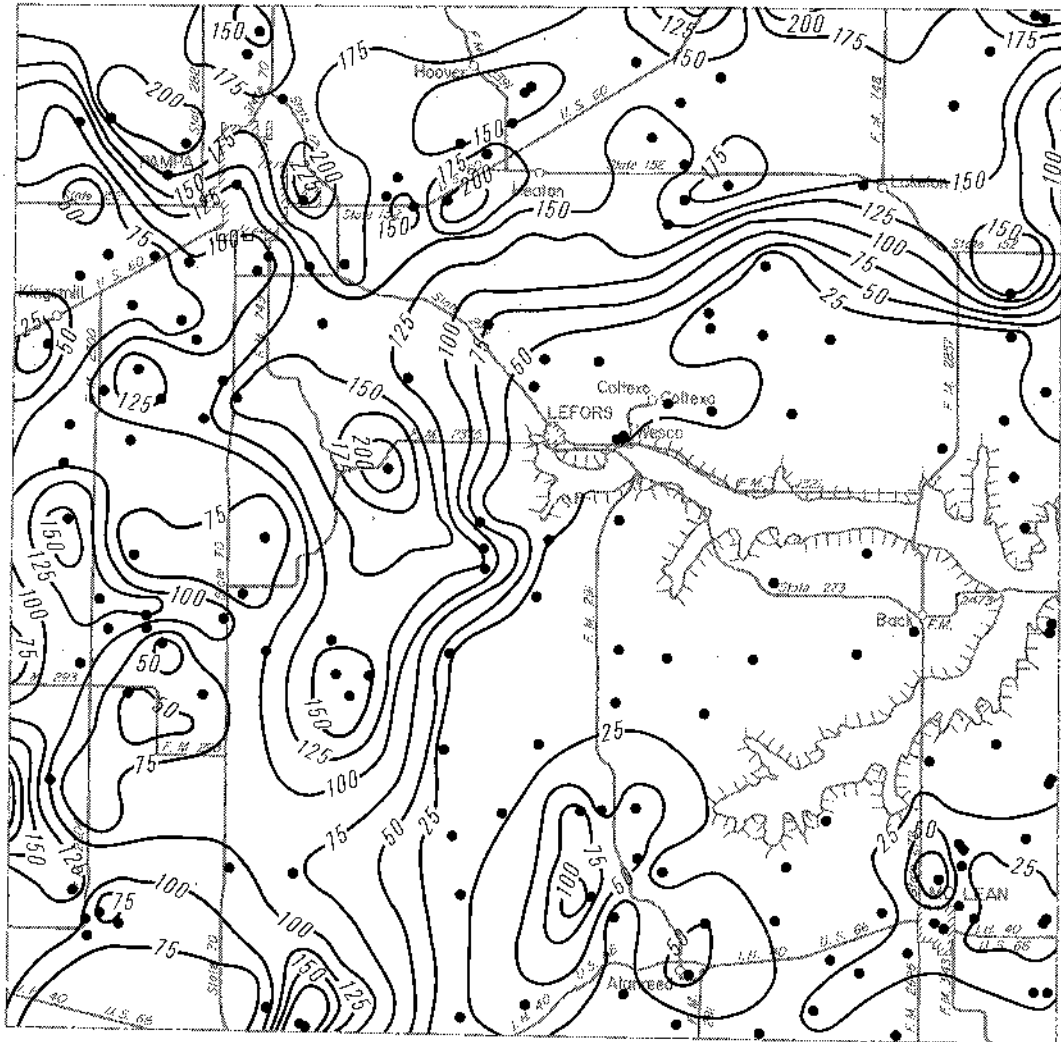
Projected Saturated Thickness

1990

Volume of Water in Storage Corresponding
to Mapped Saturated-Thickness Intervals

(Coefficient of Storage: 15 percent)

MAPPED SATURATED- THICKNESS INTERVAL (feet)	SURFACE AREA (acres)	VOLUME OF WATER IN STORAGE (acre-feet)
0- 25	154,249	354,695
25- 50	69,928	377,020
50- 75	58,389	549,509
75-100	59,698	788,928
100-125	62,566	1,050,061
125-150	44,726	922,003
150-175	60,383	1,463,435
175-200	18,363	507,253
200-225	5,988	186,960
TOTAL	534,310	6,199,864



EXPLANATION

Well used for control

Line showing approximate saturated thickness of the Ogallala aquifer, in feet.

Interval is 25 feet (7.62m)



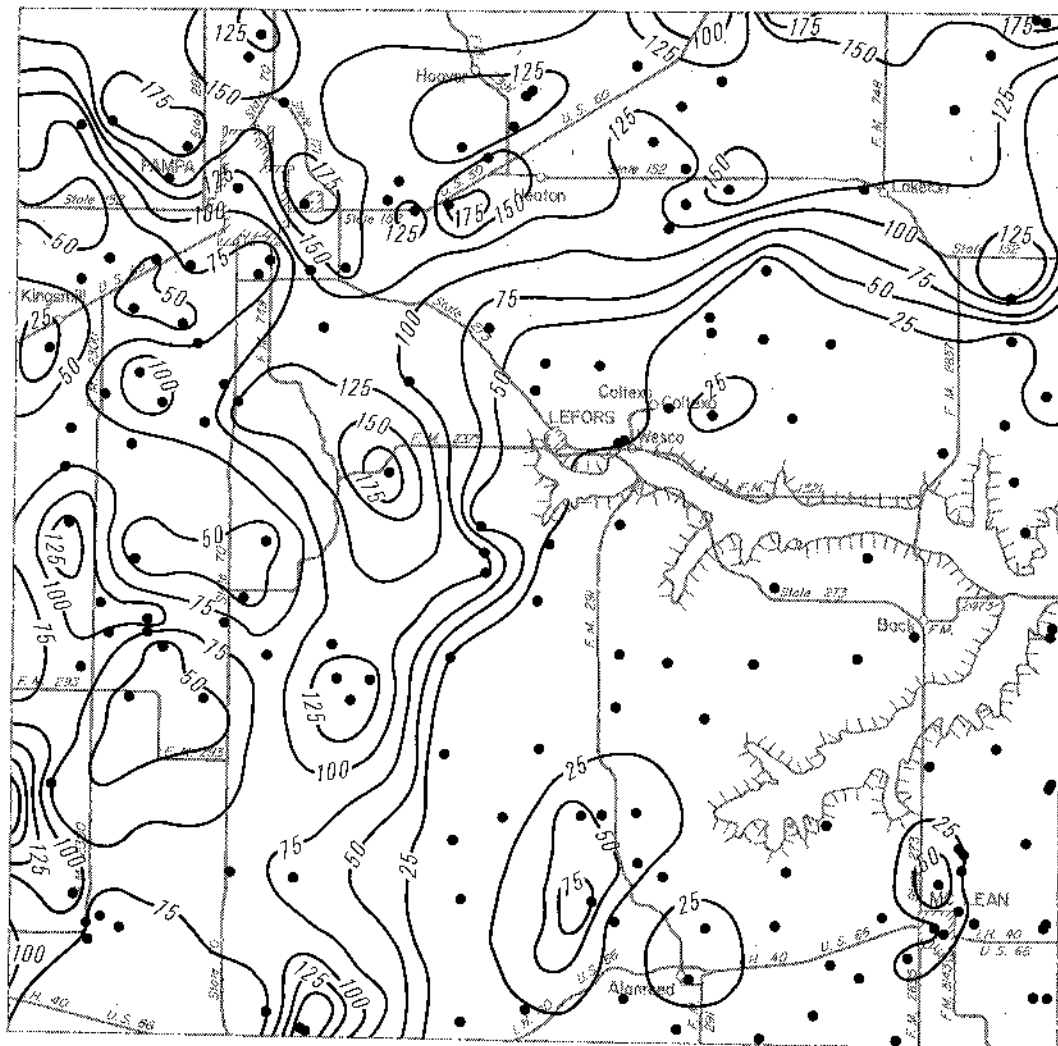
1990
Projected Saturated Thickness

2000

Volume of Water in Storage Corresponding
to Mapped Saturated-Thickness Intervals

(Coefficient of Storage: 15 percent)

<u>MAPPED SATURATED- THICKNESS INTERVAL (feet)</u>	<u>SURFACE AREA (acres)</u>	<u>VOLUME OF WATER IN STORAGE (acre-feet)</u>
0- 25	179,442	381,202
25- 50	75,720	418,431
50- 75	66,624	623,652
75-100	73,731	966,866
100-125	50,782	850,560
125-150	64,289	1,313,873
150-175	19,787	473,459
175-200	3,935	107,458
TOTAL	<u>534,310</u>	<u>5,135,501</u>



EXPLANATION

● Well used for control

—150—
 Line showing approximate saturated thickness of the Ogallala aquifer, in feet.

Interval is 25 feet (7.62m)



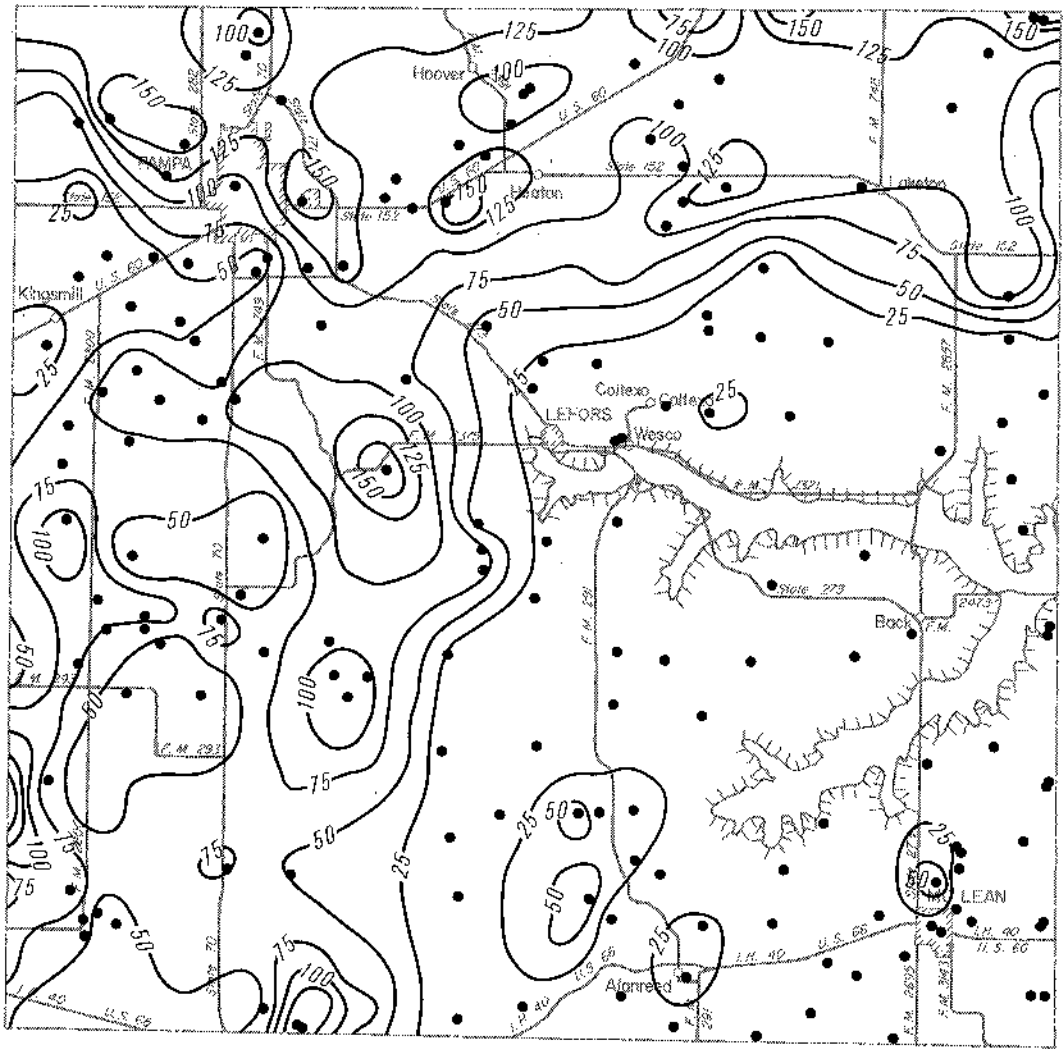
2000
 Projected Saturated Thickness

2010

Volume of Water in Storage Corresponding
to Mapped Saturated-Thickness Intervals

(Coefficient of Storage: 15 percent)

<u>MAPPED SATURATED- THICKNESS INTERVAL (feet)</u>	<u>SURFACE AREA (acres)</u>	<u>VOLUME OF WATER IN STORAGE (acre-feet)</u>
0-- 25	206,639	423,614
25-- 50	82,335	458,057
50-- 75	85,330	803,290
75--100	65,027	844,200
100--125	70,769	1,188,616
125--150	20,624	416,637
150--175	3,586	84,112
TOTAL	534,310	4,218,526



EXPLANATION

● Well used for control

— 150 —

Line showing approximate saturated thickness of the Ogallala aquifer, in feet.

Interval is 25 feet (7.62m)



2010

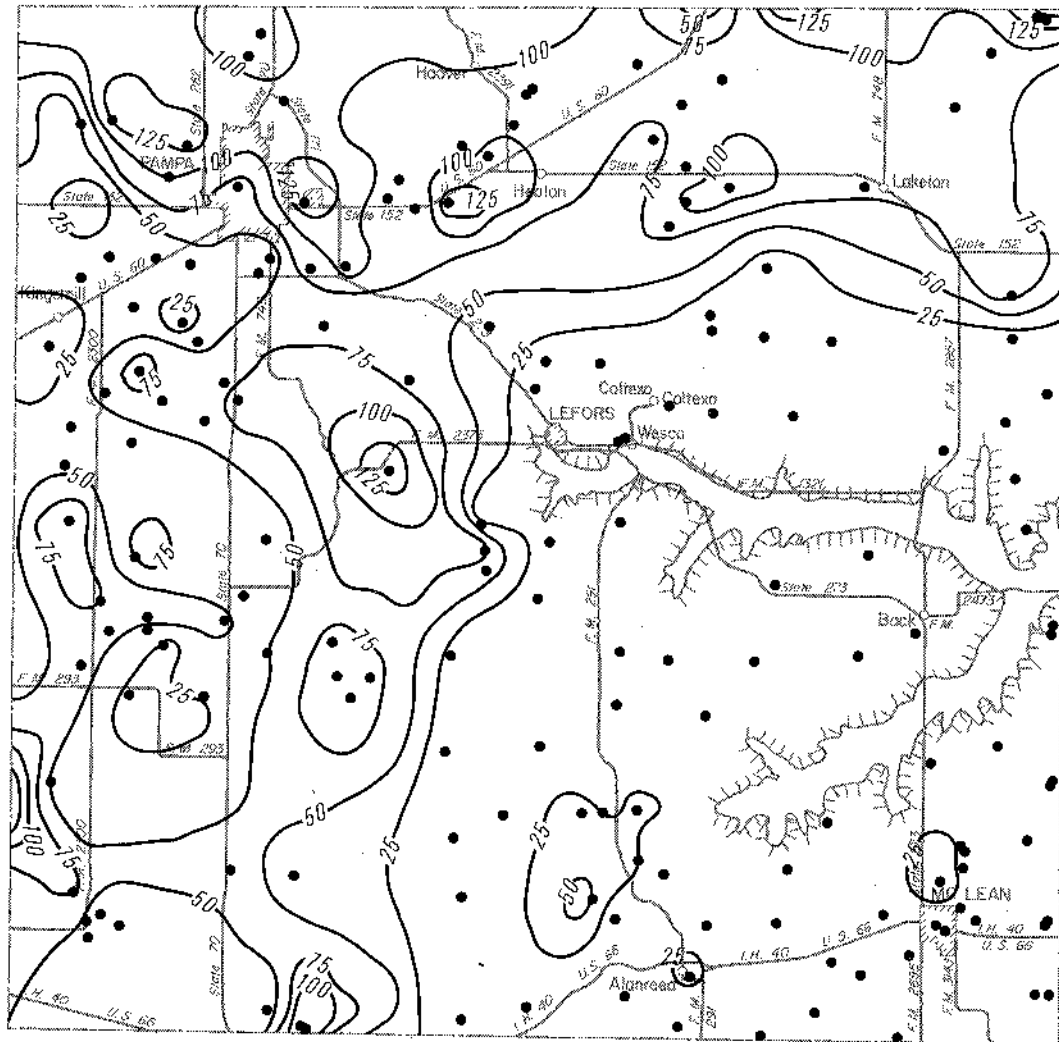
Projected Saturated Thickness

2020

Volume of Water in Storage Corresponding
to Mapped Saturated-Thickness Intervals

(Coefficient of Storage: 15 percent)

MAPPED SATURATED- THICKNESS INTERVAL (feet)	SURFACE AREA (acres)	VOLUME OF WATER IN STORAGE (acre-feet)
0- 25	229,158	449,120
25- 50	101,665	556,804
50- 75	90,041	825,703
75-100	82,828	1,098,585
100-125	26,721	438,284
125-150	3,897	76,892
TOTAL	534,310	3,445,388



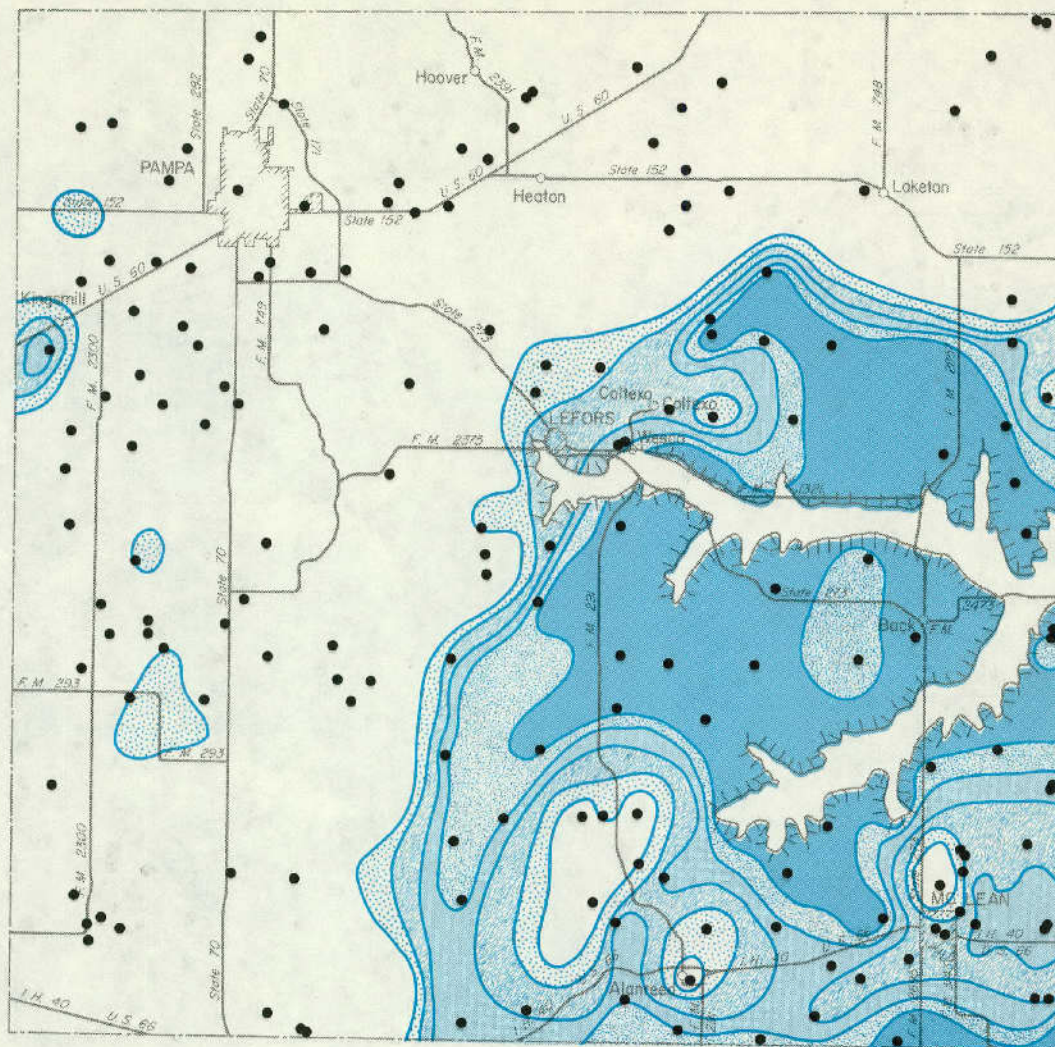
EXPLANATION

- Well used for control
- 150 ——
Line showing approximate saturated thickness of the Ogallala aquifer, in feet.
- Interval is 25 feet (7.62m)



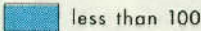
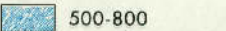
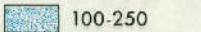
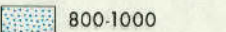
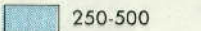
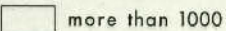
2020
Projected Saturated Thickness

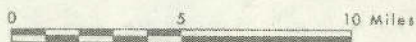
POTENTIAL WELL YIELD OF THE
OGALLALA AQUIFER



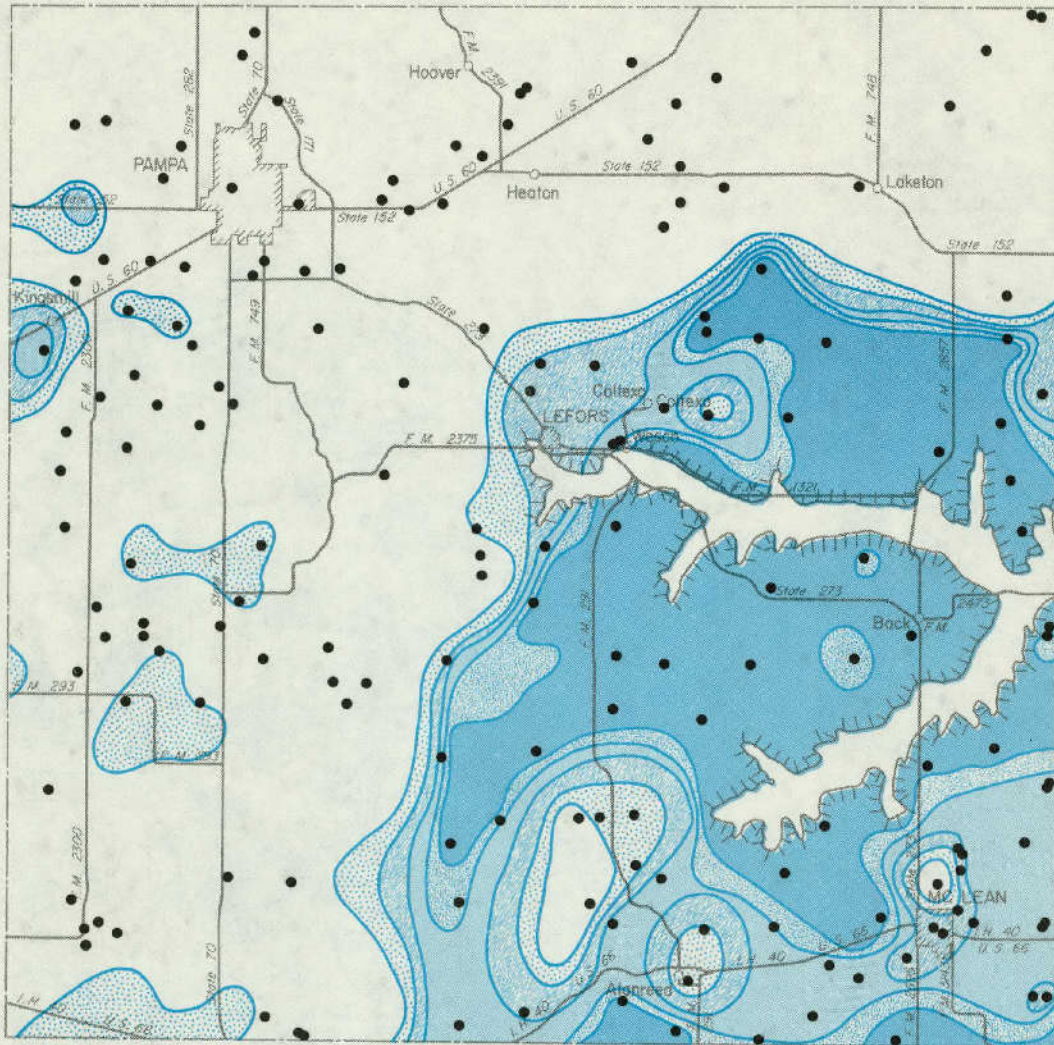
EXPLANATION

Potential well yields, in gallons per minute

	less than 100		500-800
	100-250		800-1000
	250-500		more than 1000



1974
Estimated Potential Yield

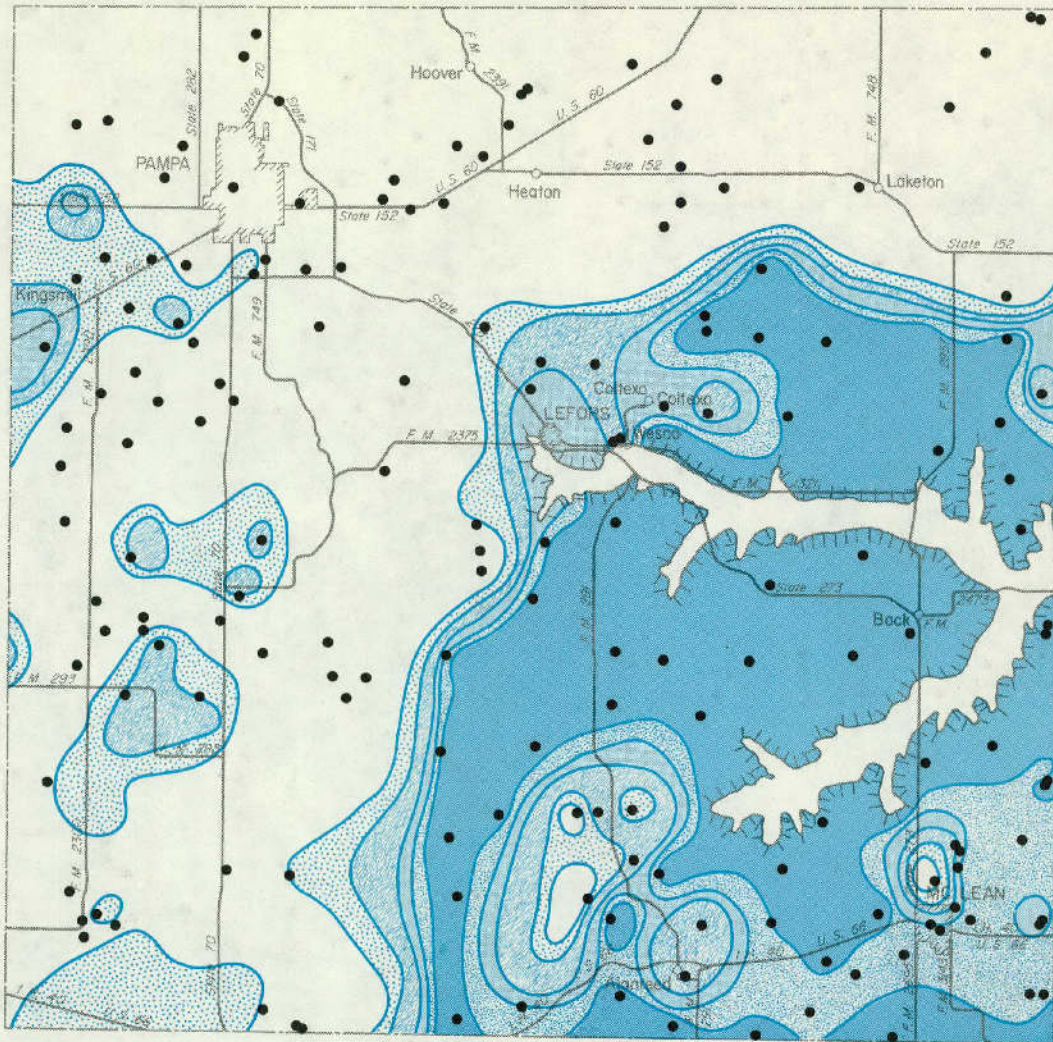


EXPLANATION

Potential well yields, in gallons per minute

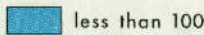
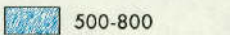
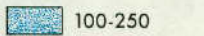
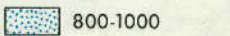
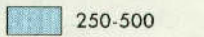
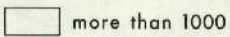


1980
Projected Potential Yield



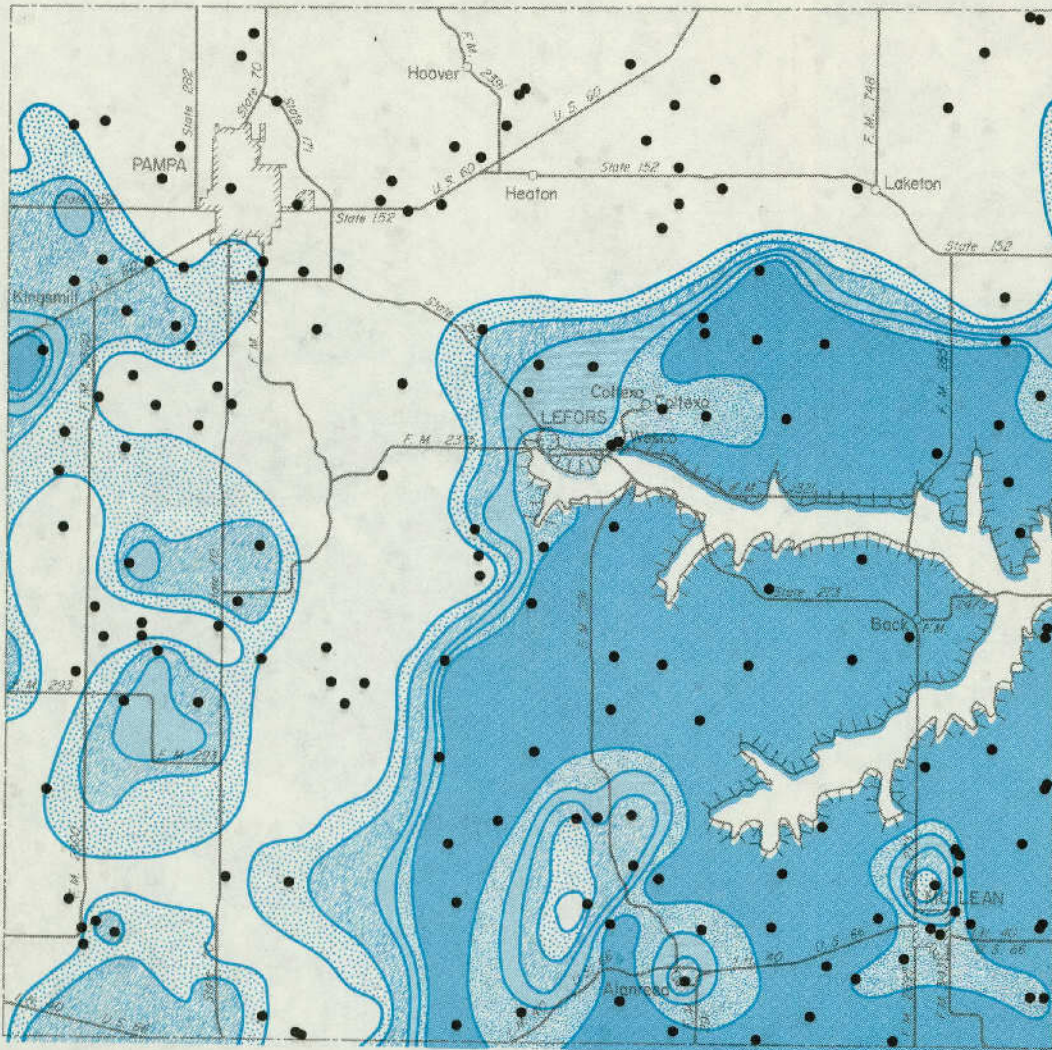
EXPLANATION

Potential well yields, in gallons per minute

 less than 100	 500-800
 100-250	 800-1000
 250-500	 more than 1000

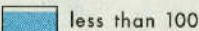
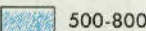
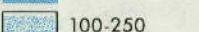
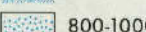
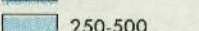
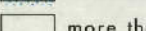


1990
Projected Potential Yield



EXPLANATION

Potential well yields, in gallons per minute

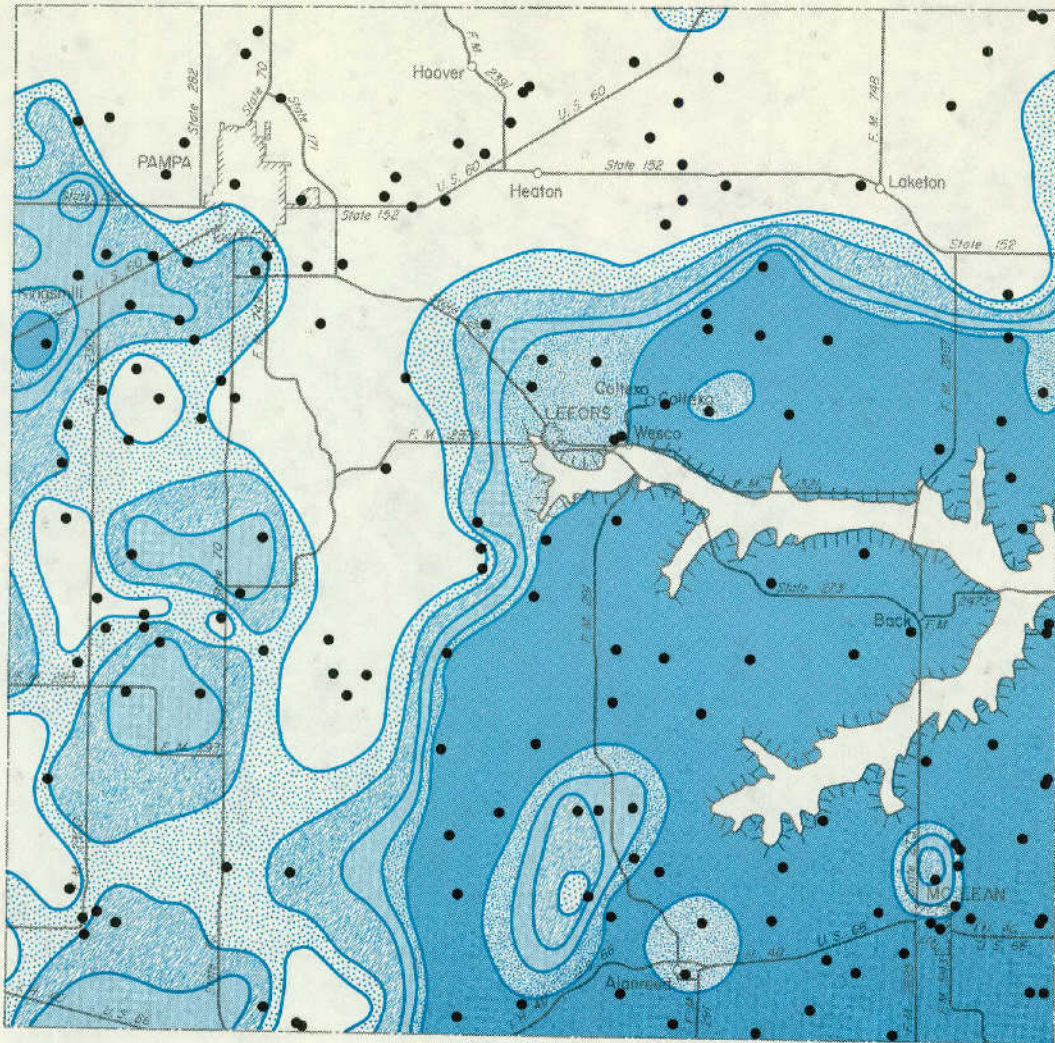
 less than 100	 500-800
 100-250	 800-1000
 250-500	 more than 1000

0 5 10 Miles

0 4 8 16 Kilometers

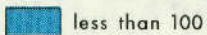
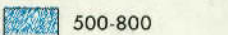
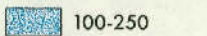
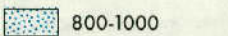
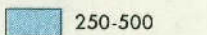
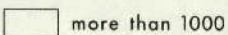


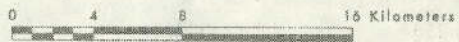
2000
Projected Potential Yield



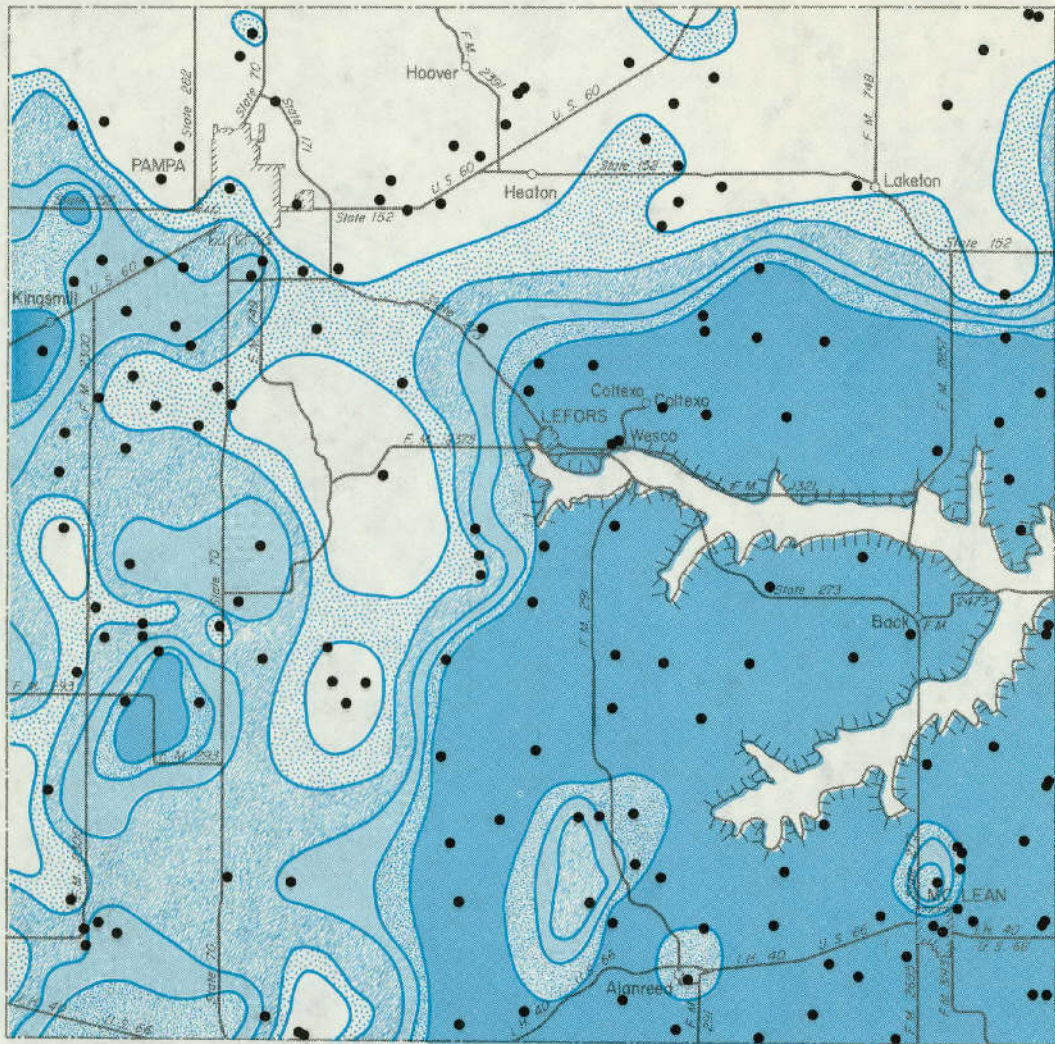
EXPLANATION

Potential well yields, in gallons per minute

 less than 100	 500-800
 100-250	 800-1000
 250-500	 more than 1000






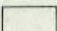


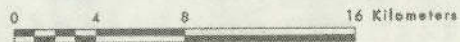
2010
Projected Potential Yield



EXPLANATION

Potential well yields, in gallons per minute

 less than 100	 500-800
 100-250	 800-1000
 250-500	 more than 1000



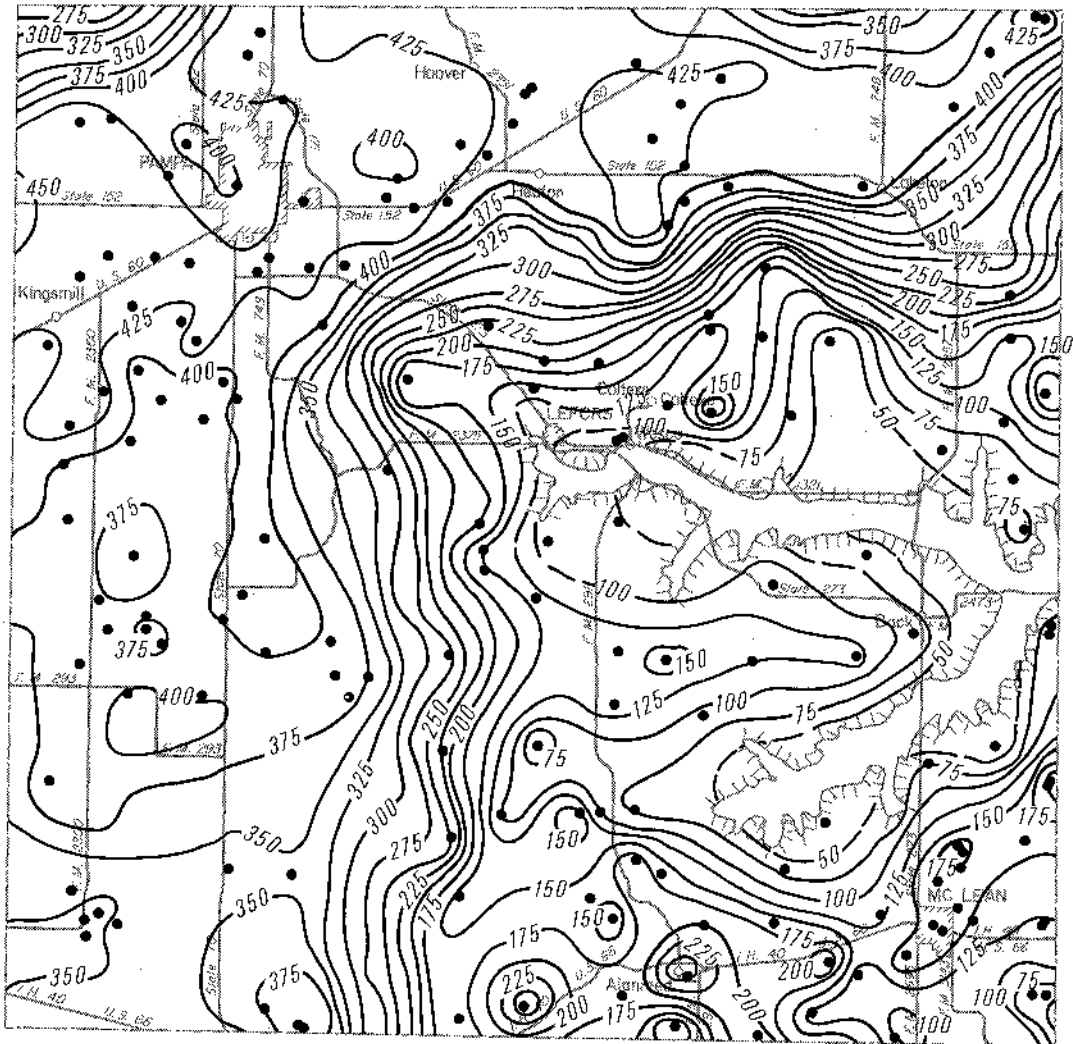
**2020
Projected Potential Yield**

PUMPING LIFTS IN THE OGALLALA AQUIFER

1974

Surface Area Corresponding to Mapped
Pumping-Lift Intervals

MAPPED PUMPING-LIFT INTERVAL (feet)	SURFACE AREA (acres)
25-50	36,280
50-75	31,306
75-100	28,636
100-125	38,734
125-150	40,233
150-175	31,819
175-200	22,937
200-225	15,921
225-250	13,753
250-275	11,083
275-300	13,937
300-325	14,983
325-350	26,810
350-375	38,846
375-400	58,230
400-425	51,912
425-450	57,883
450-475	833
TOTAL	534,136



EXPLANATION

●
Well used for control

—200—
Line showing approximate pumping lift, in feet.

Interval is 25 feet (7.62m)

0 5 10 Miles

0 4 8 16 Kilometers

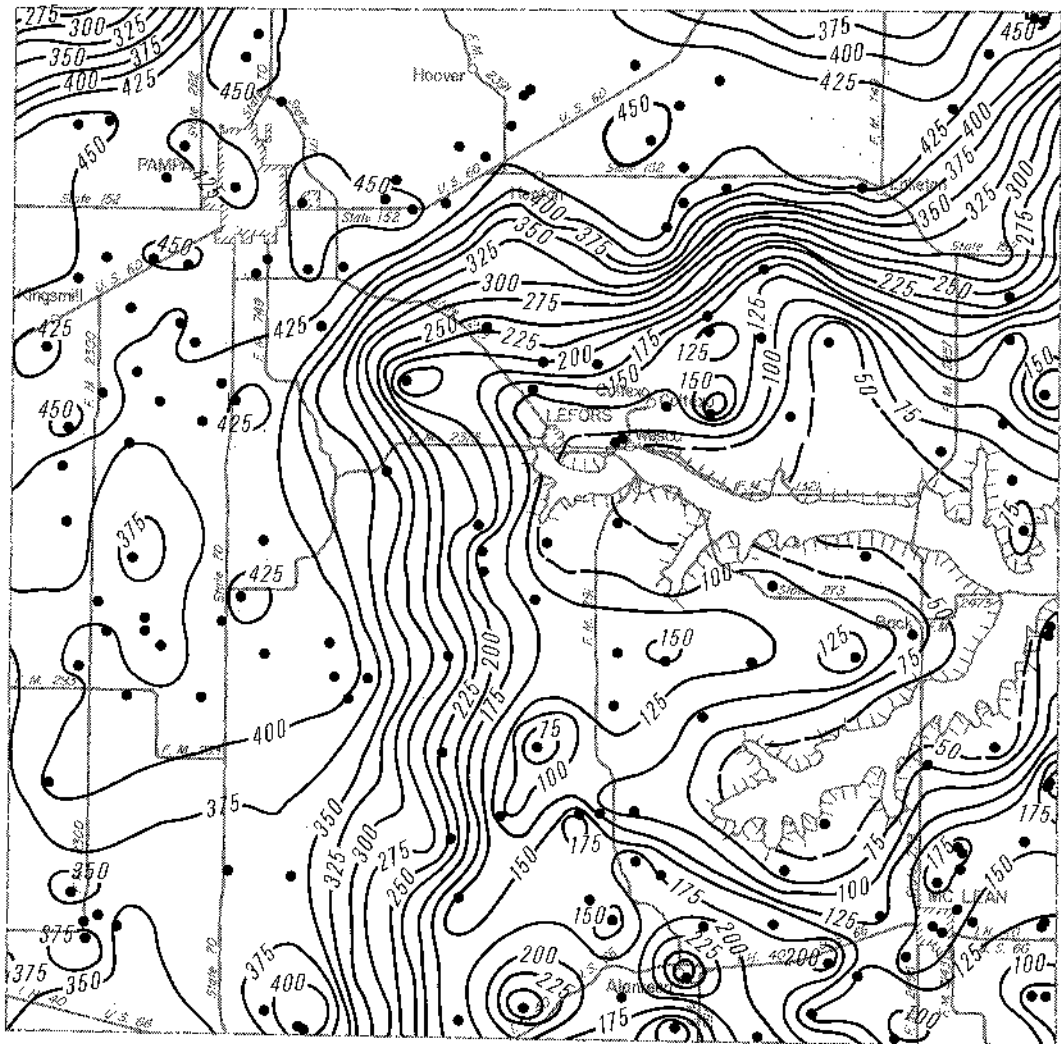


1974
Estimated Pumping Lifts

1980

Surface Area Corresponding to Mapped
Pumping-Lift Intervals

<u>MAPPED PUMPING-LIFT INTERVAL (feet)</u>	<u>SURFACE AREA (acres)</u>
25- 50	35,759
50- 75	29,912
75-100	29,507
100-125	38,037
125-150	37,271
150-175	32,342
175-200	22,589
200-225	16,095
225-250	13,469
250-275	10,562
275-300	12,999
300-325	14,460
325-350	13,937
350-375	34,645
375-400	46,809
400-425	56,093
425-450	67,263
450-475	22,387
TOTAL	534,136



EXPLANATION

- Well used for control
- 200 — Line showing approximate pumping lift, in feet.
- Interval is 25 feet (7.62m)

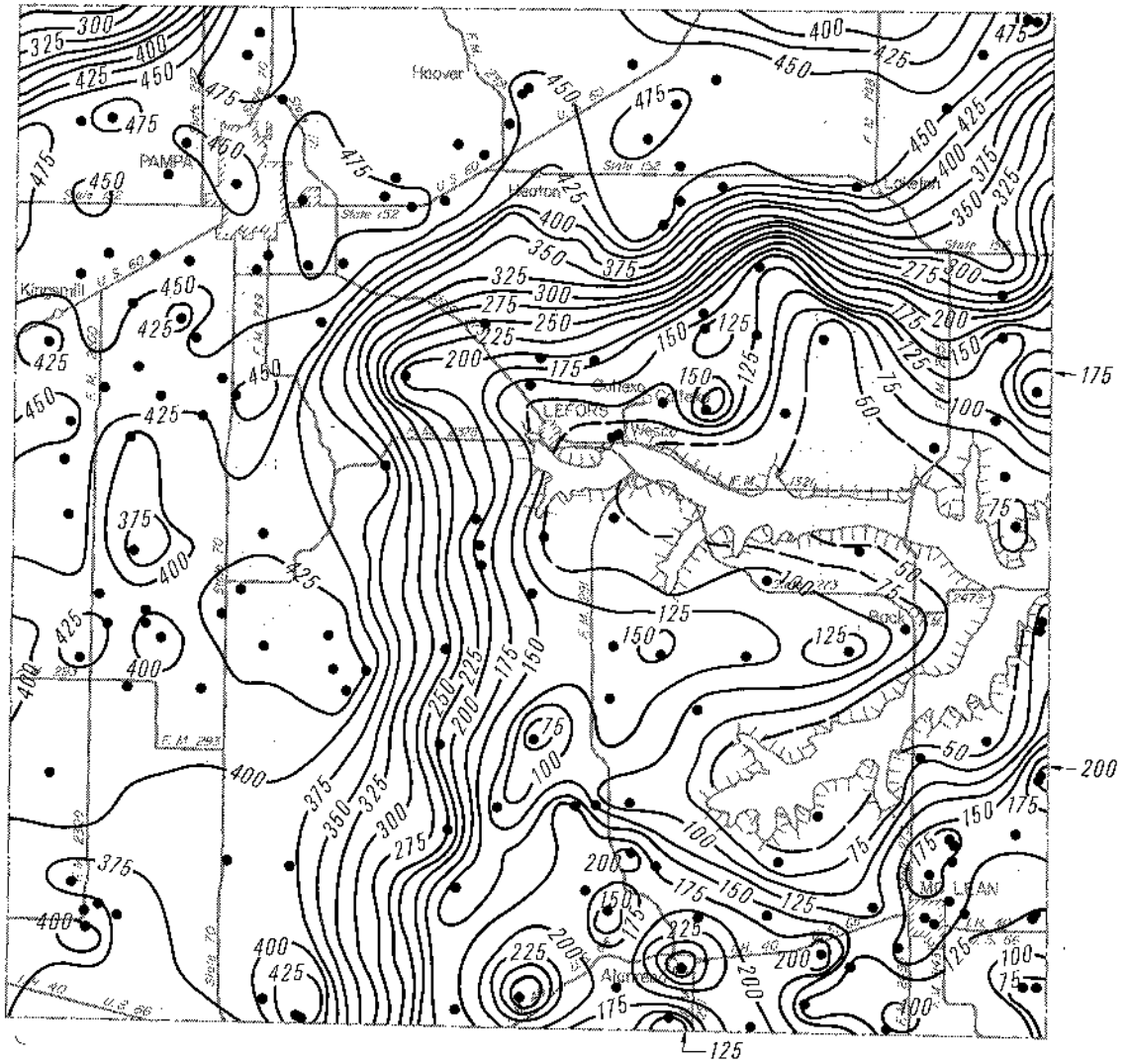


1980
Projected Pumping Lifts

1990

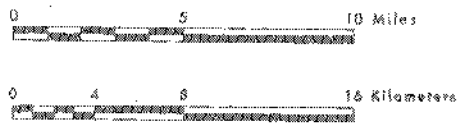
Surface Area Corresponding to Mapped
Pumping-Lift Intervals

MAPPED PUMPING-LIFT INTERVAL (feet)	SURFACE AREA (acres)
25- 50	35,062
50- 75	29,563
75-100	28,636
100-125	38,734
125-150	36,574
150-175	28,509
175-200	23,808
200-225	17,315
225-250	10,333
250-275	11,150
275-300	11,259
300-325	9,689
325-350	14,286
350-375	16,551
375-400	40,264
400-425	55,914
425-450	42,133
450-475	59,127
475-500	25,229
TOTAL	534,136



EXPLANATION

- Well used for control
- 200— Line showing approximate pumping lift, in feet.
- Interval is 25 feet (7.62m)

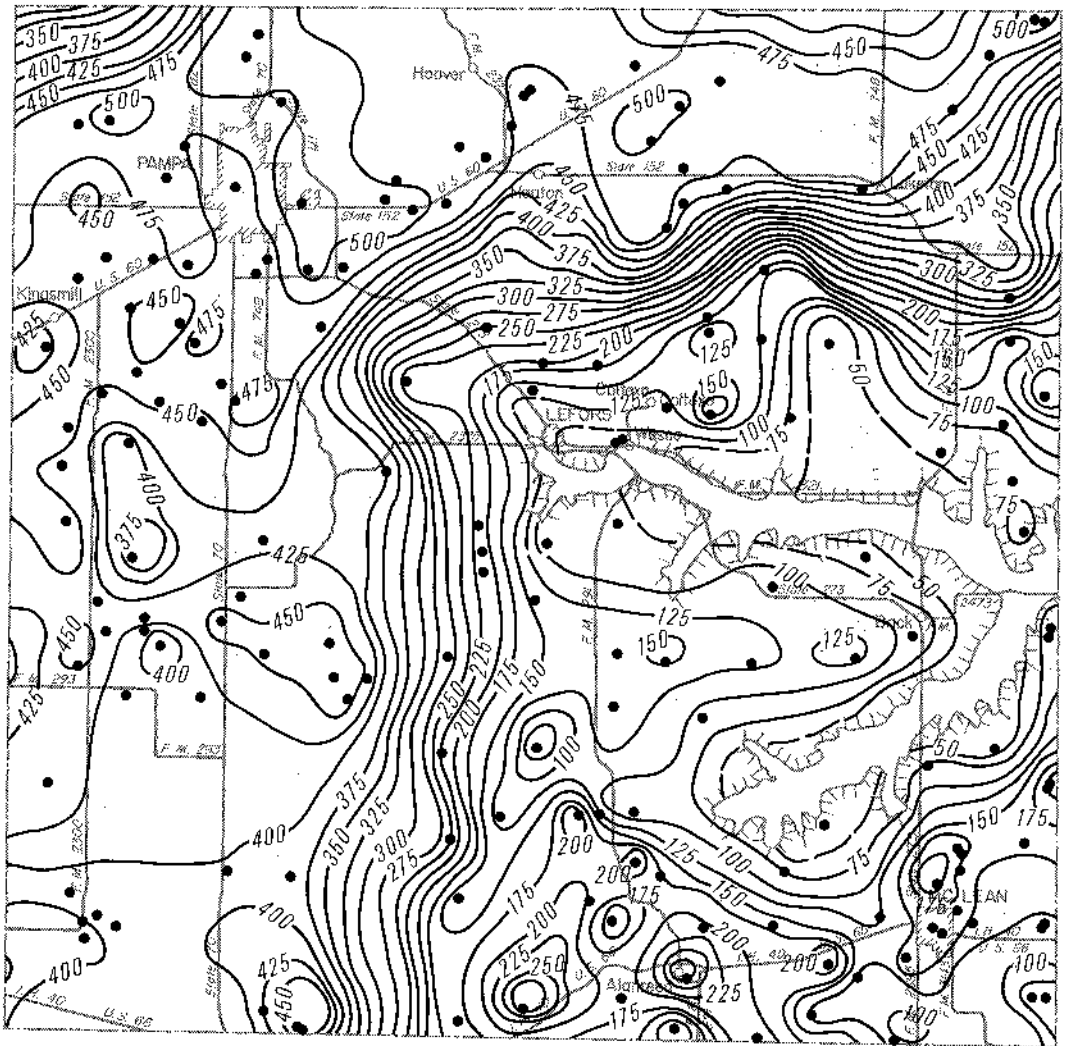


1990
Projected Pumping Lifts

2000

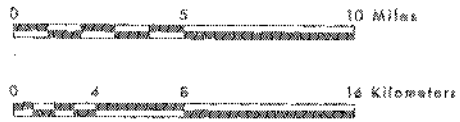
Surface Area Corresponding to Mapped
Pumping-Lift Intervals

MAPPED PUMPING-LIFT INTERVAL (feet)	SURFACE AREA (acres)
25- 50	34,016
50- 75	29,563
75-100	29,333
100-125	37,340
125-150	37,271
150-175	26,593
175-200	22,589
200-225	17,838
225-250	10,682
250-275	9,930
275-300	9,342
300-325	9,930
325-350	10,560
350-375	14,460
375-400	23,206
400-425	54,433
425-450	42,991
450-475	46,004
475-500	44,013
500-525	24,042
TOTAL	534,136



EXPLANATION

- Well used for control
- 200 — Line showing approximate pumping lift, in feet.
- Interval is 25 feet (7.62m)

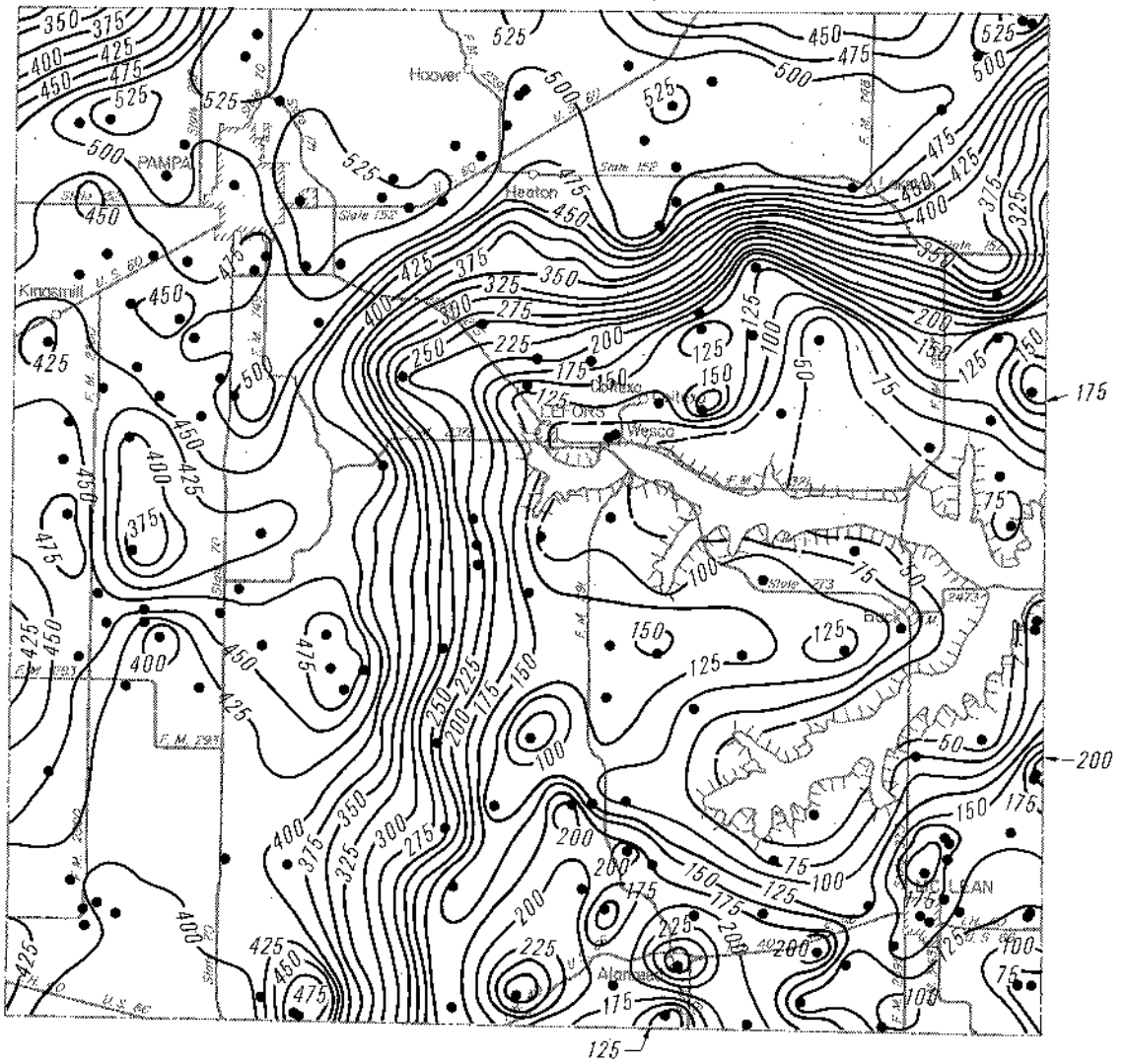


2000
Projected Pumping Lifts

2010

Surface Area Corresponding to Mapped
Pumping-Lift Intervals

MAPPED PUMPING-LIFT INTERVAL (feet)	SURFACE AREA (acres)
25- 50	34,018
50- 75	29,563
75-100	29,333
100-125	36,991
125-150	36,574
150-175	25,722
175-200	22,589
200-225	16,444
225-250	11,901
250-275	9,756
275-300	9,233
300-325	7,600
325-350	8,885
350-375	12,303
375-400	16,665
400-425	49,010
425-450	43,883
450-475	43,844
475-500	29,556
500-525	40,405
525-550	19,861
TOTAL	534,136



EXPLANATION

- Well used for control
- 200— Line showing approximate pumping lift, in feet.
- Interval is 25 feet (7.62m)

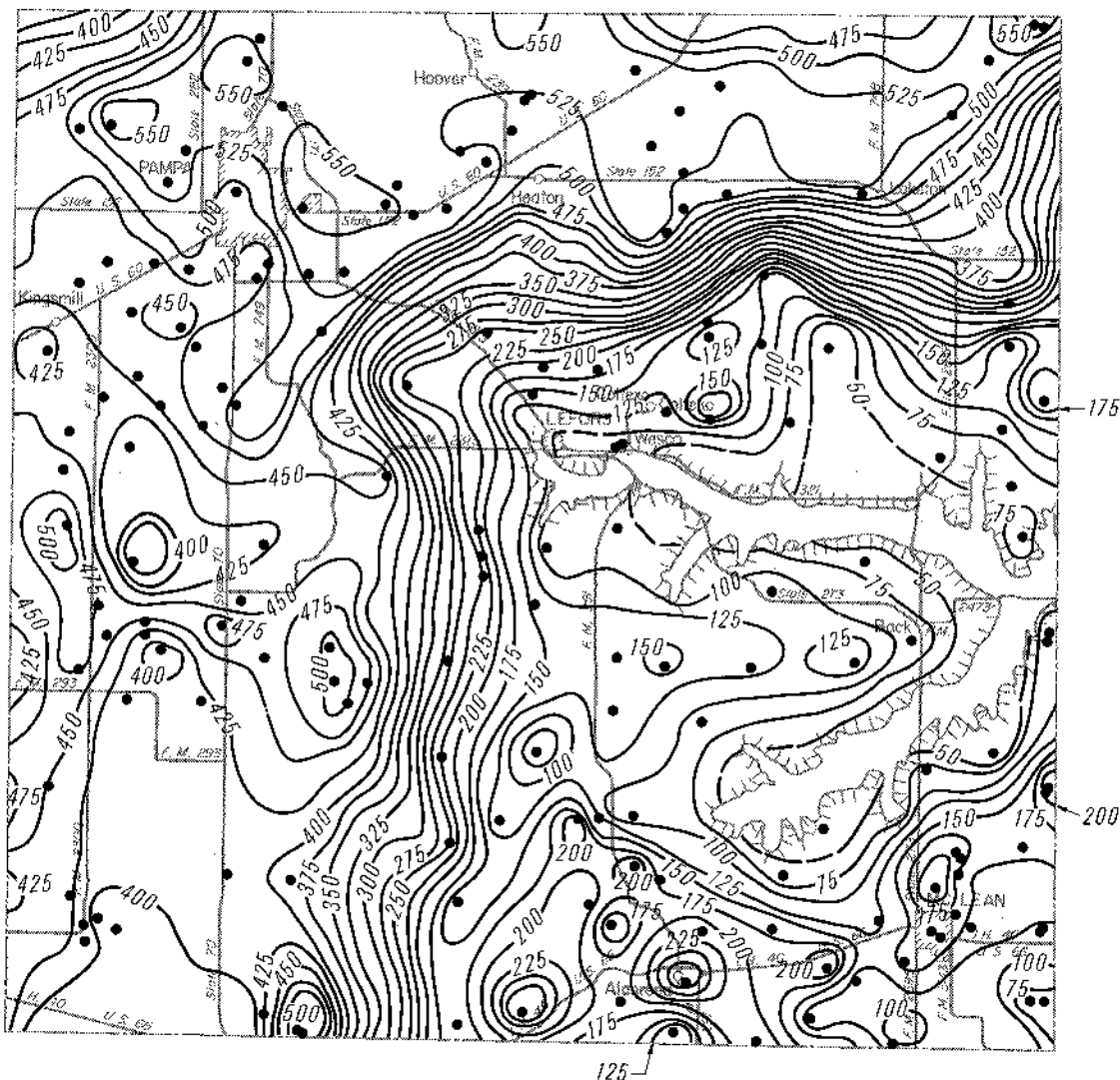


**2010
Projected Pumping Lifts**

2020

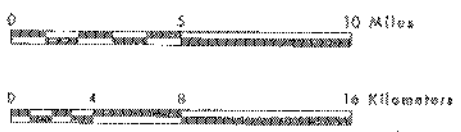
Surface Area Corresponding to Mapped
Pumping-Lift Intervals

MAPPED PUMPING-LIFT INTERVAL (feet)	SURFACE AREA (acres)
25- 50	34,017
50- 75	29,563
75-100	28,985
100-125	37,166
125-150	36,574
150-175	25,547
175-200	22,240
200-225	15,573
225-250	12,424
250-275	9,059
275-300	8,014
300-325	7,143
325-350	8,994
350-375	10,627
375-400	15,205
400-425	42,006
425-450	43,847
450-475	42,283
475-500	30,493
500-525	20,194
525-550	43,555
550-575	10,627
TOTAL	534,136



EXPLANATION

- Well used for control
- 200—
Line showing approximate pumping lift, in feet.
- Interval is 25 feet (7.62m)



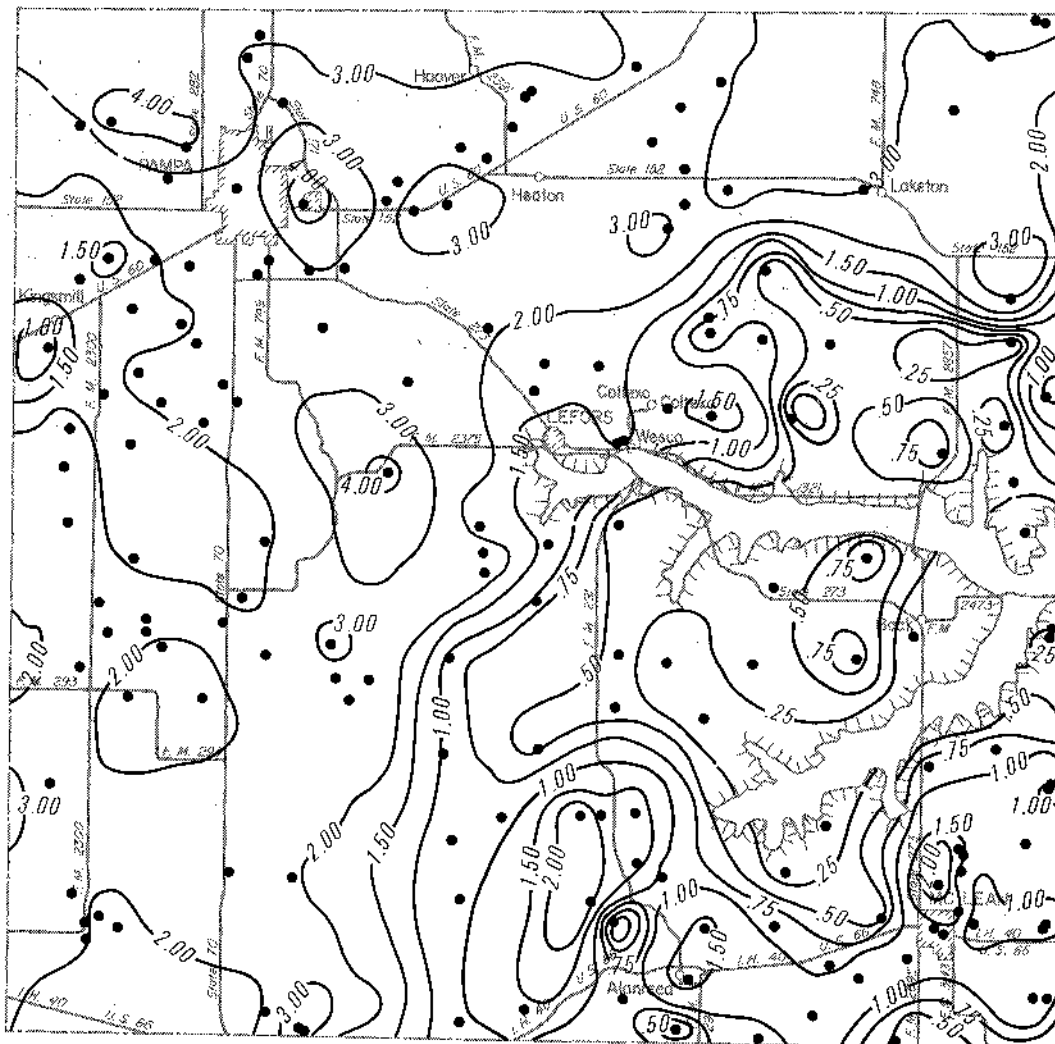
2020
Projected Pumping Lifts

PUMPAGE FROM THE OGALLALA AQUIFER

1974

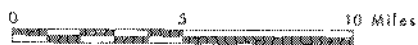
Pumpage Corresponding to Mapped
Decline-Rate Intervals

MAPPED DECLINE- RATE INTERVAL (feet)	SURFACE AREA (acres)	STORAGE CAPACITY OF DEWATERED SECTION (acre-feet)	ESTIMATED PUMPAGE RATE, INCLUDING NATURAL RECHARGE AND IRRIGATION RECIRCULATION (acre-feet per year)
0.00-0.25	37,457	796	2,590
.25- .50	46,276	2,628	5,011
.50- .75	38,758	3,638	5,779
.75-1.00	34,723	4,580	6,629
1.00-1.50	60,275	11,252	15,140
1.50-2.00	68,914	18,198	23,177
2.00-3.00	198,707	74,954	91,556
3.00-4.00	46,413	22,572	26,956
4.00-5.00	1,568	967	1,135
TOTAL	533,091	139,585	177,973



EXPLANATION

- Well used for control
- 1.25— Line showing approximate rate of decline in water level, in feet per year. Interval is variable

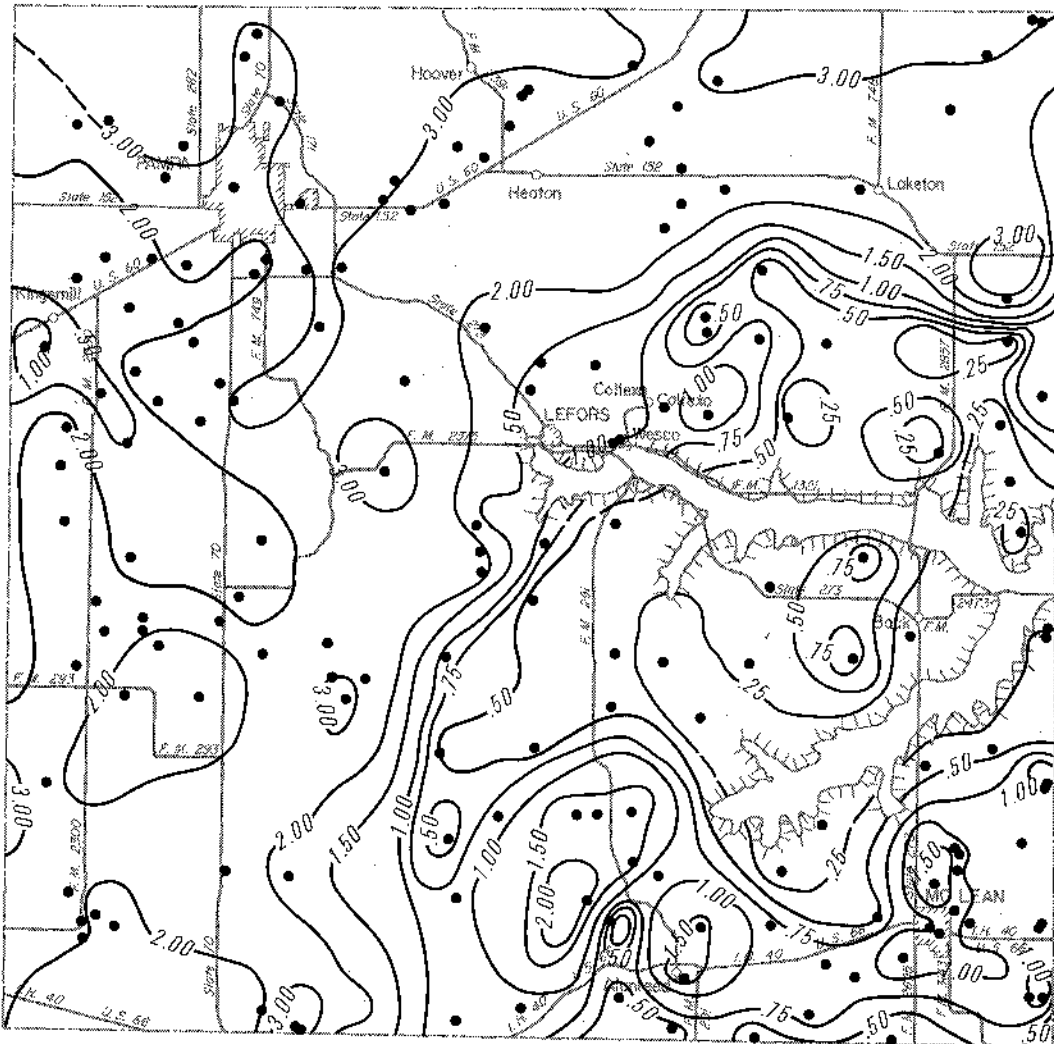


1974
Estimated Rates of Water-Level Decline

1980

Pumpage Corresponding to Mapped
Decline-Rate Intervals

MAPPED DECLINE- RATE INTERVAL (feet)	SURFACE AREA (acres)	STORAGE CAPACITY OF DEWATERED SECTION (acre-feet)	ESTIMATED PUMPAGE RATE, INCLUDING NATURAL RECHARGE AND IRRIGATION RECIRCULATION (acre-feet per year)
0.00—0.25	43,845	928	3,027
.25— .50	53,425	3,027	5,778
.50— .75	44,210	4,049	6,480
.75—1.00	38,013	4,979	7,219
1.00—1.50	57,487	10,717	14,424
1.50—2.00	74,857	19,700	25,102
2.00—3.00	188,644	70,458	86,150
3.00—4.00	32,088	15,347	18,352
4.00—5.00	348	218	256
TOTAL	532,917	129,423	166,788



EXPLANATION

- Well used for control
- 1.25 — Line showing approximate rate of decline in water level, in feet per year.
- Interval is variable

0 5 10 Miles

0 4 8 16 Kilometers

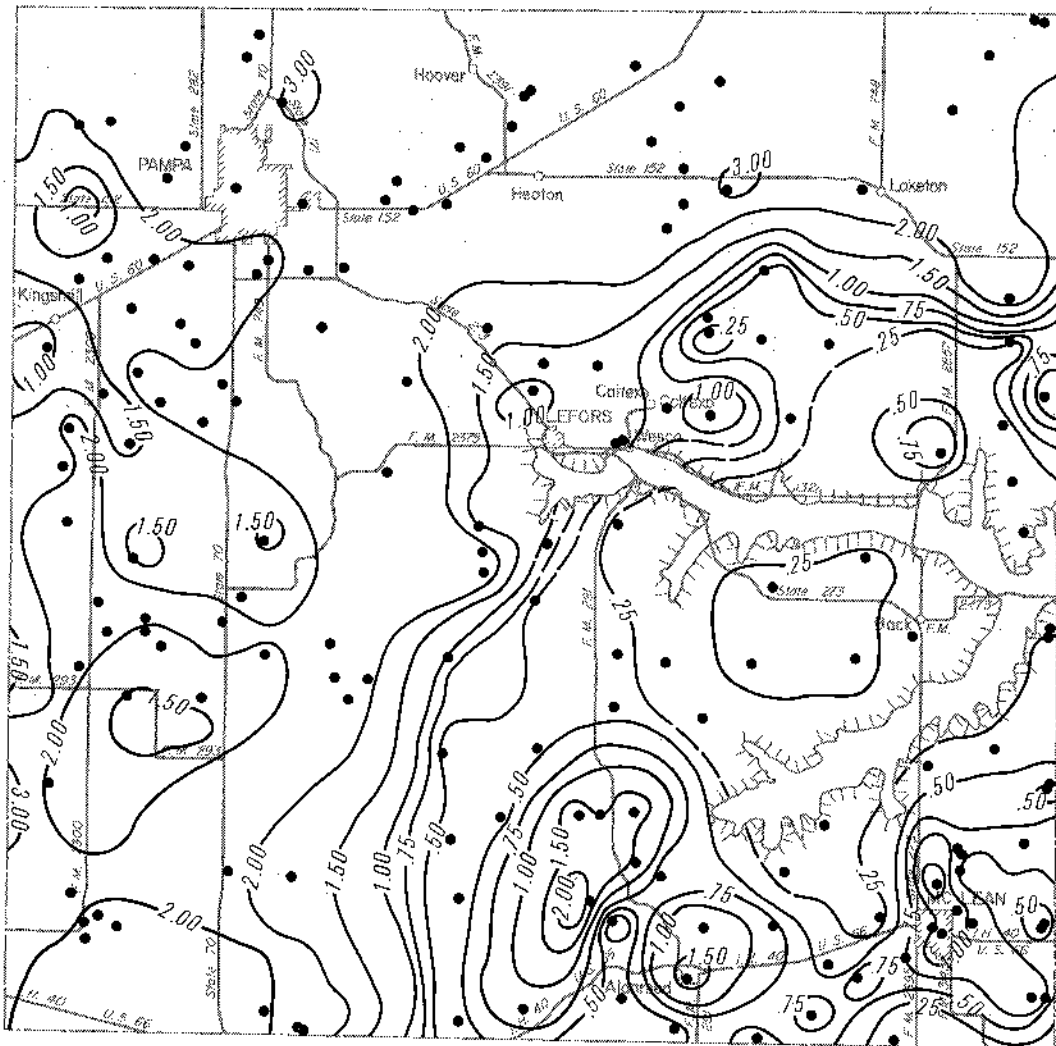


1980
Projected Rates of Water-Level Decline

1990

Pumpage Corresponding to Mapped
Decline-Rate Intervals

MAPPED DECLINE- RATE INTERVAL (feet)	SURFACE AREA (acres)	STORAGE CAPACITY OF DEWATERED SECTION (acre-feet)	ESTIMATED PUMPAGE RATE, INCLUDING NATURAL RECHARGE AND IRRIGATION RECIRCULATION (acre-feet per year)
0.00-0.25	56,384	1,028	3,715
.25- .50	66,629	3,796	7,227
.50- .75	44,091	4,064	6,492
.75-1.00	33,929	4,385	6,379
1.00-1.50	56,347	10,676	14,326
1.50-2.00	100,159	26,539	33,783
2.00-3.00	170,536	61,371	75,324
3.00-4.00	2,925	1,400	1,675
TOTAL	531,000	113,259	148,921



EXPLANATION

- Well used for control
- 1.25 — Line showing approximate rate of decline in water level, in feet per year.
- Interval is variable



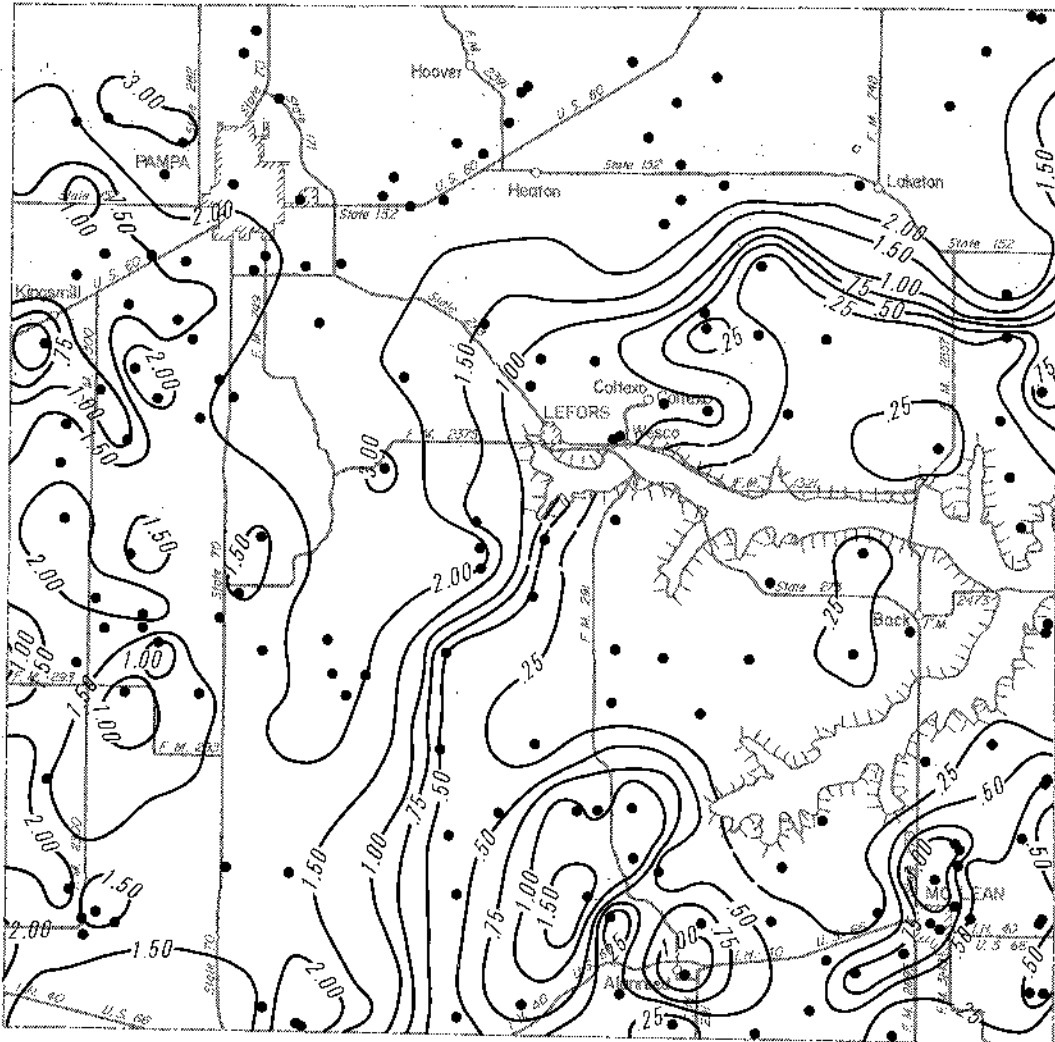
1990
Projected Rates of Water-Level Decline

2000

Pumpage Corresponding to Mapped
Decline-Rate Intervals

MAPPED DECLINE- RATE INTERVAL (feet)	SURFACE AREA (acres)	STORAGE CAPACITY OF DEWATERED SECTION. (acre-feet)	ESTIMATED PUMPAGE RATE, INCLUDING NATURAL RECHARGE AND IRRIGATION RECIRCULATION (acre-feet per year)
0.00-0.25	92,885	1,408	5,806
.25- .50	56,146	3,177	6,068
.50- .75	37,685	3,458	5,528
.75-1.00	31,665	4,067	5,925
1.00-1.50	63,933	12,212	16,363
1.50-2.00	106,602	27,900	35,576
2.00-3.00	133,276	47,714	58,594
3.00-4.00	1,501	715	856
TOTAL	523,693	100,651	134,716

3



EXPLANATION

- Well used for control
- 1.25 — Line showing approximate rate of decline in water level, in feet per year.
- Interval is variable

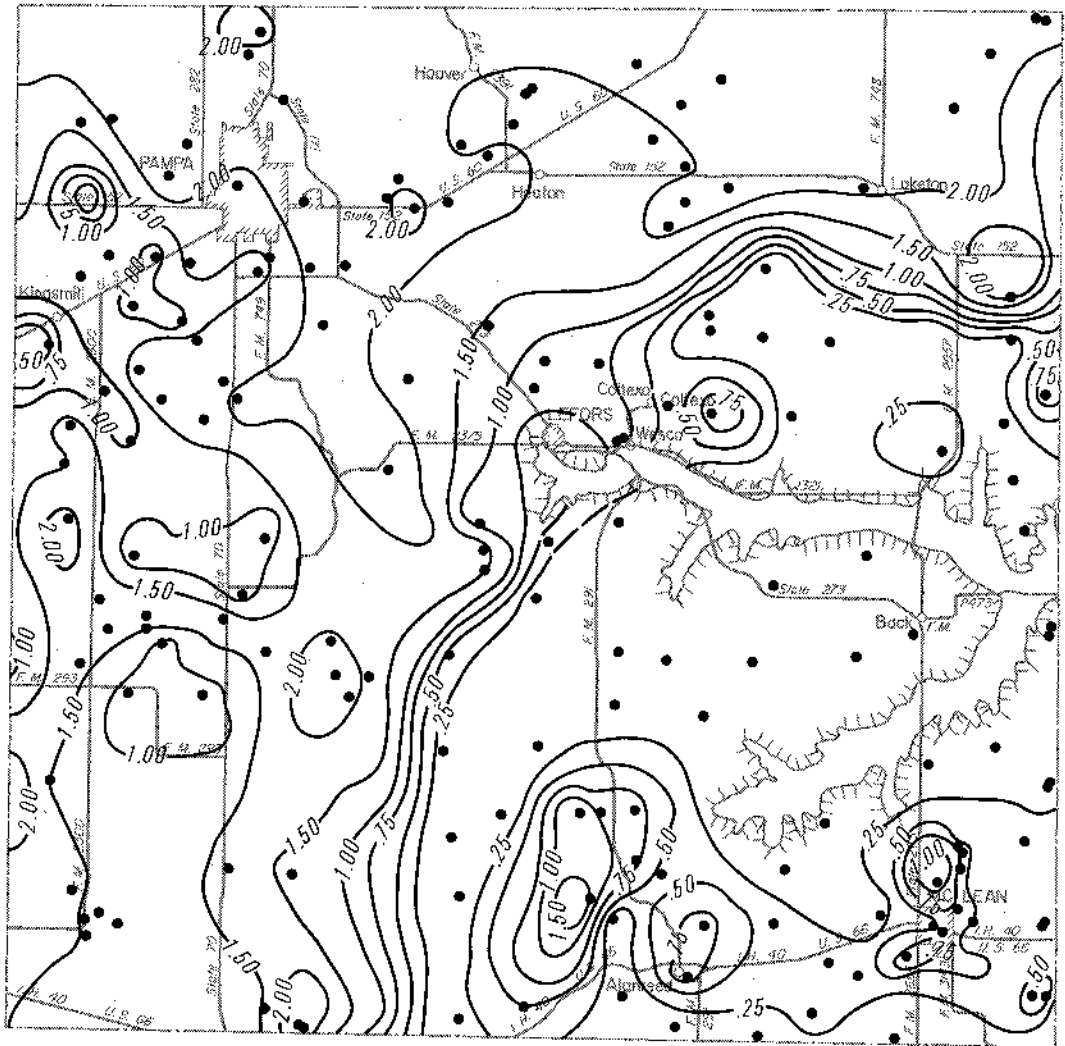


2000
Projected Rates of Water-Level Decline

2010

Pumpage Corresponding to Mapped
Decline-Rate Intervals

MAPPED DECLINE- RATE INTERVAL (feet)	◦ SURFACE AREA (acres)	STORAGE CAPACITY OF DEWATERED SECTION (acre-feet)	ESTIMATED PUMPAGE RATE, INCLUDING NATURAL RECHARGE AND IRRIGATION RECIRCULATION (acre-feet per year)
0.00—0.25	125,026	1,578	7,464
.25— .50	48,505	2,696	5,189
.50— .75	32,834	3,072	4,884
.75—1.00	36,881	4,807	6,978
1.00—1.50	81,271	15,525	20,803
1.50—2.00	106,669	27,532	35,174
2.00—3.00	89,548	30,052	37,162
TOTAL	520,734	85,262	117,654



EXPLANATION

●
Well used for control

— 1.25 —
Line showing approximate rate of decline
in water level, in feet per year.

Interval is variable

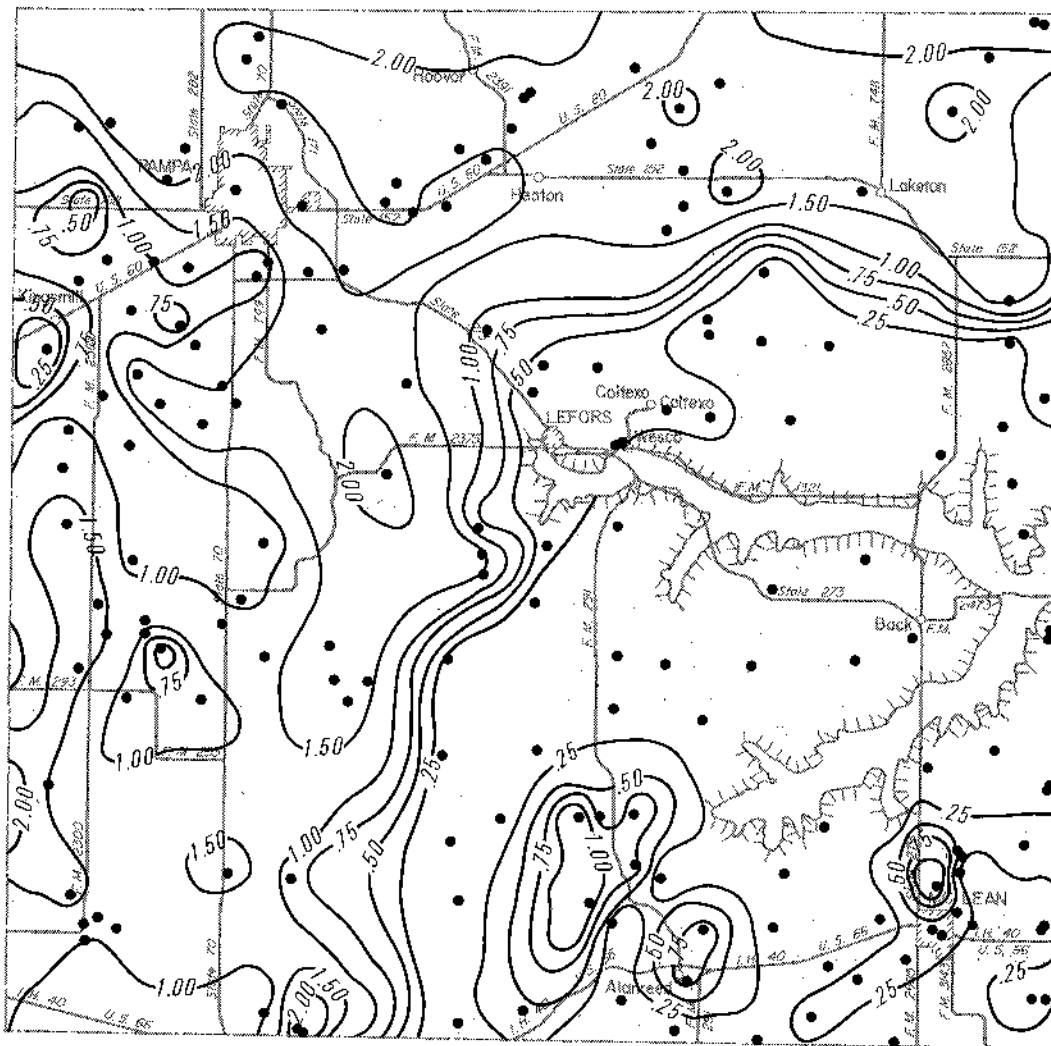


2010
Projected Rates of Water-Level Decline

2020

Pumpage Corresponding to Mapped
Decline-Rate Intervals

<u>MAPPED DECLINE- RATE INTERVAL (feet)</u>	<u>SURFACE AREA (acres)</u>	<u>STORAGE CAPACITY OF DEWATERED SECTION (acre-feet)</u>	<u>ESTIMATED PUMPAGE RATE, INCLUDING NATURAL RECHARGE AND IRRIGATION RECIRCULATION (acre-feet per year)</u>
0.00-0.25	140,124	1,549	8,127
.25- .50	53,958	2,924	5,686
.50- .75	31,383	2,988	4,726
.75-1.00	43,006	5,638	8,173
1.00-1.50	103,101	19,620	26,307
1.50-2.00	111,684	29,355	37,409
2.00-3.00	28,287	9,283	11,508
TOTAL	511,543	71,357	101,936



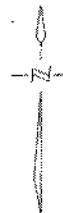
EXPLANATION

●
Well used for control

— 1.25 —

Line showing approximate rate of decline
in water level, in feet per year.

Interval is variable



2020
Projected Rates of Water-Level Decline

ACKNOWLEDGEMENTS

Special appreciation is expressed to the Gray County landowners and water users for allowing their wells to be measured by Department and Water District personnel. This study could not have been accomplished without their cooperation and the records obtained from their wells.

Special thanks are also expressed to the staff of the Panhandle Ground Water Conservation District No. 3, Mr. Felix W. Ryals, manager, for providing records and consultation during the study.

Additionally, appreciation is expressed to several individuals for consultation and for review and comment on the methodology and techniques employed in this study: Mr. Frank A. Rayner, former general manager of the High Plains Underground Water Conservation District No. 1; Dr. Donald Reddell, associate professor of Engineering, Texas A&M University; Mr. Leon New, irrigation specialist, Texas Agriculture Extension Service, Lubbock, Texas; Mr. Shelby Newman, superintendent, Texas Agricultural Experiment Station, Stephenville, Texas; Dr. C. C. Reeves, Jr., professor of Geosciences, Texas Tech University; and Dr. James Osborn, former chairman of the Department of Agricultural Economics, Texas Tech University.

STAFF INVOLVEMENT

This report is one of a series of county reports being published under the title "Analytical Study of the Ogallala Aquifer." Former staff member A. Wayne Wyatt was instrumental in initiating the study and coauthored a number of the previously published reports of this series.

The Gray County report was prepared under the supervision of Bernard B. Baker, head of the Ground Water Data Unit in the Texas Department of Water

Resources' Data Collection and Evaluation Section, Dr. Tommy R. Knowles, chief. Numerous staff members of this Section assisted the authors in assembling and evaluating data and information. Overall technical supervision of the Ogallala study is exercised by C. R. Baskin, director, Data and Engineering Services Division. The Department's Information Systems and Services Office, David L. Ferguson, director, provided automated data processing and computational services, and prepared the manuscript copy of tabular and graphical displays.

METRIC CONVERSIONS TABLE

For those readers interested in using the International System (SI) of Units, the metric equivalents of English units of measurement have been given in parenthesis in the text. The English units used in tables of this report may be converted to metric units by the following conversion factors:

MULTIPLY ENGLISH UNITS	BY	TO OBTAIN SI UNITS
inches	2.540	centimeters (cm)
feet	.3048	meters (m)
miles	1.609	kilometers (km)
square miles	2.590	square kilometers (km ²)
gallons	3.785	liters (l)
gallons per minute	.06309	liters per second (l/s)
gallons per minute per foot	.207	liters per second per meter (l/s/m)
acre-feet	1,233.	cubic meters (m ³)
acre-feet	1.233 X 10 ⁻⁶	cubic kilometers (km ³)
million acre-feet	1.233	cubic kilometers (km ³)

SELECTED REFERENCES

- Alexander, W. H., Jr., 1961, Geology and ground-water resources of the Northern High Plains of Texas, progress report no. 1: Texas Board Water Engineers Bull. 6109, 47 p.
- Alexander, W. H., Jr., Broadhurst, W. L., and White, W. N., 1943, Progress report on ground water in the High Plains in Texas: Texas Board Water Engineers duplicated rept., 22 p.
- Baker, C. L., 1915, Geology and underground waters of the northern Llano Estacado: Univ. Texas Bull. 57, 225 p.
- Baker, E. T., Jr., Long, A. T., Jr., Reeves, R. D., and Wood, L. A., 1963, Reconnaissance investigation of the ground-water resources of the Red River, Sulphur River, and Cypress Creek basins, Texas: Texas Water Comm. Bull. 6306, 137 p.
- Barnes, J. R., and others, 1949, Geology and ground water in the irrigated region of the Southern High Plains of Texas, progress report no. 7: Texas Board Water Engineers duplicated rept., 51 p.
- Bell, A. E., and Morrison, S., 1977, Analytical study of the Ogallala aquifer in Hockley County, Texas—projections of saturated thickness, volume of water in storage, pumpage rates, pumping lifts, and well yields: Texas Dept. Water Resources Rept. 214, 63 p.
- Bell, A. E., and Sechrist, A. W., 1970, Playas—Southern High Plains of Texas: Playa Lake Symposium, ICASALS, Texas Tech Univ., Lubbock, Texas, Oct. 1970, Proc., p. 35-39.
- Brand, J. P., 1953, Cretaceous of Llano Estacado of Texas: Univ. Texas, Bur. Econ. Geology Rept. of Inv. 20, 59 p.
- Broadhurst, W. L., Sundstrom, R. W., and Weaver, D. E., 1949, Public water supplies in western Texas: Texas Board Water Engineers duplicated rept., 277 p.
- 1951, Public water supplies in western Texas: U.S. Geol. Survey Water-Supply Paper 1106, 168 p.
- Cronin, J. G., 1961, A summary of the occurrence and development of ground water in the Southern High Plains of Texas: Texas Board Water Engineers Bull. 6107, 110 p.
- Cronin, J. G., 1969, Ground water in the Ogallala Formation in the Southern High Plains of Texas and New Mexico: U.S. Geol. Survey Hydrol. Inv. Atlas HA-330, 9 p.
- Cronin, J. G., Follett, C. R., Shafer, G. H., and Rettman, P. L., 1963, Reconnaissance investigation of the ground-water resources of the Brazos River basin, Texas: Texas Water Comm. Bull. 6310, 163 p.
- Cronin, J. G., and Wells, L. C., 1960, Geology and ground-water resources of Hale County, Texas: Texas Board Water Engineers Bull. 6010, 146 p.
- Evans, G. L., and Meade, G. E., 1945, Quaternary of the Texas High Plains in Contributions to geology, 1944: Univ. Texas Pub. 4401, p. 485-507.
- Fenneman, N. M., 1931, Physiography of the western United States: New York, McGraw-Hill Book Co., 534 p.
- Fink, B. E., 1963, Ground-water geology of Triassic deposits, northern part of the Southern High Plains of Texas: High Plains Underground Water Conservation Dist. No. 1, Rept. 163, 79 p.
- Frye, J. C., 1970, The Ogallala Formation—a review: Ogallala Aquifer Symposium, Texas Tech Univ., Lubbock, Texas, 1970, Proc., p. 5-14.
- Frye, J. C., and Leonard, A. B., 1957, Studies of Cenozoic geology along eastern margin of Texas High Plains, Armstrong to Howard Counties: Univ. Texas, Bur. Econ. Geology Rept. of Inv. 32, 62 p.
- Gammon, S. W., and Muse, W. R., 1966, Water-level data from observation wells in the Southern High Plains of Texas: Texas Water Devel. Board Rept. 21, 537 p.
- Gard, Chris, 1958, Ground-water conditions in Carson County, Texas: Texas Board Water Engineers Bull. 5802, 120 p.
- Gillett, P. T., and Janca, I. G., 1965, Inventory of Texas irrigation, 1958 and 1964: Texas Water Comm. Bull. 6515, 317 p.
- Gould, C. N., 1906, The geology and water resources of the eastern portion of the Panhandle of Texas: U.S. Geol. Survey Water-Supply Paper 154, 64 p.

- Gould, C. N., 1907, The geology and water resources of the western portion of the Panhandle of Texas: U.S. Geol. Survey Water-Supply Paper 191, 70 p.
- Grubb, H. W., 1966, Importance of irrigation water to the economy of the Texas High Plains: Texas Water Devel. Board Rept. 11, 53 p.
- Haragan, D. R., 1970, An investigation of clouds and precipitation for the Texas High Plains: Texas Water Devel. Board Rept. 111, 125 p.
- Havens, J. S., 1966, Recharge studies on the High Plains in Northern Lea County, New Mexico: U.S. Geol. Survey Water-Supply Paper 1819-F, 52 p.
- Hughes, W. F., and Harman, W. L., 1969, Projected economic life of water resources, Subdivision no. 1, High Plains underground water reservoir: Texas A&M Univ. Tech. Mon. 6, 82 p.
- Lang, J. W., and Twichell, Trigg, 1945, Water resources of the Lubbock district, Texas: Texas Board Water Engineers duplicated rept., 168 p.
- Leggat, E. R., 1952, Geology and ground-water resources of Lynn County, Texas: Texas Board Water Engineers Bull. 5207, 76 p.
- _____, 1954a, Summary of ground-water development in the Southern High Plains, Texas: Texas Board Water Engineers Bull. 5402, 21 p.
- _____, 1954b, Ground-Water development in the Southern High Plains of Texas, 1953: Texas Board Water Engineers Bull. 5410, 7 p.
- _____, 1957, Geology and ground-water resources of Lamb County, Texas: Texas Board Water Engineers Bull. 5704, 187 p.
- Long, A. T., Jr., 1961, Geology and ground-water resources of Carson County and part of Gray County, Texas, progress report no. 1: Texas Board Water Engineers Bull. 6102, 45 p.
- Luckey, R. R., and Hofstra, W. E., 1974, Digital model of the Ogallala aquifer of the northern part of the Northern High Plains of Colorado: Colorado Water Conservation Board, Colorado Water Resources Circ. No. 24, 22 p.
- McAdoo, G. D., Leggat, E. R., and Long, A. T., 1964, Geology and ground-water resources of Carson County and part of Gray County, Texas, progress report no. 2: Texas Water Comm. Bull. 6402, 30 p.
- Moulder, E. A., and Frazor, D. R., 1957, Artificial-recharge experiments at McDonald well field, Amarillo, Texas: Texas Board Water Engineers Bull. 5701, 34 p.
- Myers, B. N., 1969, Compilation of results of aquifer tests in Texas: Texas Water Devel. Board Rept. 98, 537 p.
- New, Leon, 1968, High Plains irrigation survey: Texas A&M Univ. Ext. Service duplicated rept., 14 p.
- _____, 1969, High Plains irrigation survey: Texas A&M Univ. Ext. Service duplicated rept., 14 p.
- _____, 1970, High Plains irrigation survey: Texas A&M Univ. Ext. Service duplicated rept., 10 p.
- _____, 1971, High Plains irrigation survey: Texas A&M Univ. Ext. Service duplicated rept., 16 p.
- _____, 1972, High Plains irrigation survey: Texas A&M Univ. Ext. Service duplicated rept., 18 p.
- _____, 1973, High Plains irrigation survey: Texas A&M Univ. Ext. Service duplicated rept., 16 p.
- _____, 1974, High Plains irrigation survey: Texas A&M Univ. Ext. Service duplicated rept., 18 p.
- North Plains Ground Water Conservation District No. 2, 1966, Geology and ground-water resources of the North Plains Ground Water Conservation District No. 2: North Plains Ground Water Conservation District No. 2, Progress rept. No. 2, 49 p.
- _____, 1970, Geology and ground-water resources of the North Plains Ground Water Conservation District: North Plains Ground Water Conservation District No. 2, Progress rept. No. 3, 35 p.
- _____, 1973, Geology and ground-water resources of Lipscomb County, Texas: North Plains Ground Water Conservation District No. 2, 31 p.
- Osborn, J. E., Harris, T. R., and Owens, T. R., 1974, Impact of ground-water and petroleum on the economy of the Texas High Plains: Texas Tech Univ., Dept. Agr. Econ., 87 p.
- Rayner, F. A., 1965, The ground water supplies of the Southern High Plains of Texas: Proc. 3rd West Texas Water Conf., Texas Tech Coll., p. 20-42.
- _____, 1973, Taking a new look at the demise of the Ogallala aquifer: Testimony presented to West Texas

- Citizens Advisory Council on Water Resources public hearing, Lubbock, Texas, October 3, 1973, 16 p.
- Rettman, P. L., and Leggat, E. R., 1966, Ground-water resources of Gaines County, Texas: Texas Water Devel. Board Rept. 15, 186 p.
- Schwiesow, W. F., 1965, Playa lake use and modification in the High Plains, *in* Studies of playa lakes in the High Plains of Texas: Texas Water Devel. Board Rept. 10, p. 1-8.
- Sherrill, D. W., 1958, High Plains irrigation survey: Texas A&M Coll. Ext. Service duplicated rept., 10 p.
- _____, 1959, High Plains irrigation survey: Texas A&M Coll. Ext. Service duplicated rept., 10 p.
- Smith, J. T., 1973, Ground-water resources of Motley and northeastern Floyd Counties, Texas: Texas Water Devel. Board Rept. 165, 8 p.
- Swann, T., 1974, Texas High Plains facts: Lubbock, Water, Inc., 10 p.
- Texas Board Water Engineers, 1960, Reconnaissance investigation of the ground-water resources of the Canadian River basin, Texas: Texas Board Water Engineers Bull. 6016, 33 p.
- Texas Water Development Board, 1971, Inventories of irrigation in Texas, 1958, 1964, and 1969: Texas Water Devel. Board Rept. 127, 232 p.
- Theis, C. V., 1937, Amount of ground-water recharge in the Southern High Plains: Am. Geophys. Union Trans., 18th Ann. Mtg., p. 564-568.
- Thurmond, R. V., 1951, High Plains irrigation survey: Texas A&M Coll. Ext. Service duplicated rept., 4 p.
- White, W. N., Broadhurst, W. L., and Lang, J. W., 1946, Ground water in the High Plains of Texas: U.S. Geol. Survey Water-Supply Paper 889-F, p. 381-420.
- Wyatt, A. W., 1968, Progress report no. 1, A general discussion accompanied by hydrological maps pertaining to the ground-water resources in the South Plains Underground Water Conservation District No. 4: South Plains Underground Water Conservation District No. 4, 24 p.
- _____, 1975, TWDB High Plains study shows 340 million acre-feet of water in 45-county area, *in* Water for Texas: Texas Water Devel. Board pub., V. 5, no. 1 and 2, p. 20-22.
- Wyatt, A. W., and others, 1970, Water-level data from observation wells in the Southern High Plains of Texas, 1965-70: Texas Water Devel. Board Rept. 121, 361 p.
- _____, 1971, Water-level data from observation wells in the Northern Panhandle of Texas: Texas Water Devel. Board Rept. 137, 263 p.
- Wyatt, A. W., Bell, A. E., and Morrison, S., 1976, Analytical study of the Ogallala aquifer in Hale County, Texas—projections of saturated thickness, volume of water in storage, pumpage rates, pumping lifts, and well yields: Texas Water Devel. Board Rept. 200, 63 p.
- _____, 1976, Analytical study of the Ogallala aquifer in Lamb County, Texas—projections of saturated thickness, volume of water in storage, pumpage rates, pumping lifts, and well yields: Texas Water Devel. Board Rept. 204, 63 p.
- _____, 1976, Analytical study of the Ogallala aquifer in Parmer County, Texas—projections of saturated thickness, volume of water in storage, pumpage rates, pumping lifts, and well yields: Texas Water Devel. Board Rept. 205, 63 p.
- _____, 1976, Analytical study of the Ogallala aquifer in Castro County, Texas—projections of saturated thickness, volume of water in storage, pumpage rates, pumping lifts, and well yields: Texas Water Devel. Board Rept. 206, 63 p.
- _____, 1976, Analytical study of the Ogallala aquifer in Bailey County, Texas—projections of saturated thickness, volume of water in storage, pumpage rates, pumping lifts, and well yields: Texas Water Devel. Board Rept. 207, 63 p.
- _____, 1976, Analytical study of the Ogallala aquifer in Crosby County, Texas—projections of saturated thickness, volume of water in storage, pumpage rates, pumping lifts, and well yields: Texas Water Devel. Board Rept. 209, 63 p.
- _____, 1976, Analytical study of the Ogallala aquifer in Floyd County, Texas—projections of saturated thickness, volume of water in storage, pumpage rates, pumping lifts, and well yields: Texas Water Devel. Board Rept. 211, 63 p.
- _____, 1977, Analytical study of the Ogallala aquifer in Briscoe County, Texas—projections of saturated thickness, volume of water in storage, pumpage rates, pumping lifts, and well yields: Texas Water Devel. Board Rept. 212, 63 p.

Wyatt, A. W., Bell, A. E., and Morrison, S., 1977,
Analytical study of the Ogallala aquifer in Deaf Smith
County, Texas—projections of saturated thickness,

volume of water in storage, pumpage rates, pumping
lifts, and well yields: Texas Water Devel. Board Rept.
213, 63 p.

20 09