

P437.7
M315d
1991
#54

Fish Stocking in Texas Bays: 1975-1990

Government Publications
Texas State Documents

MAY 29 1991

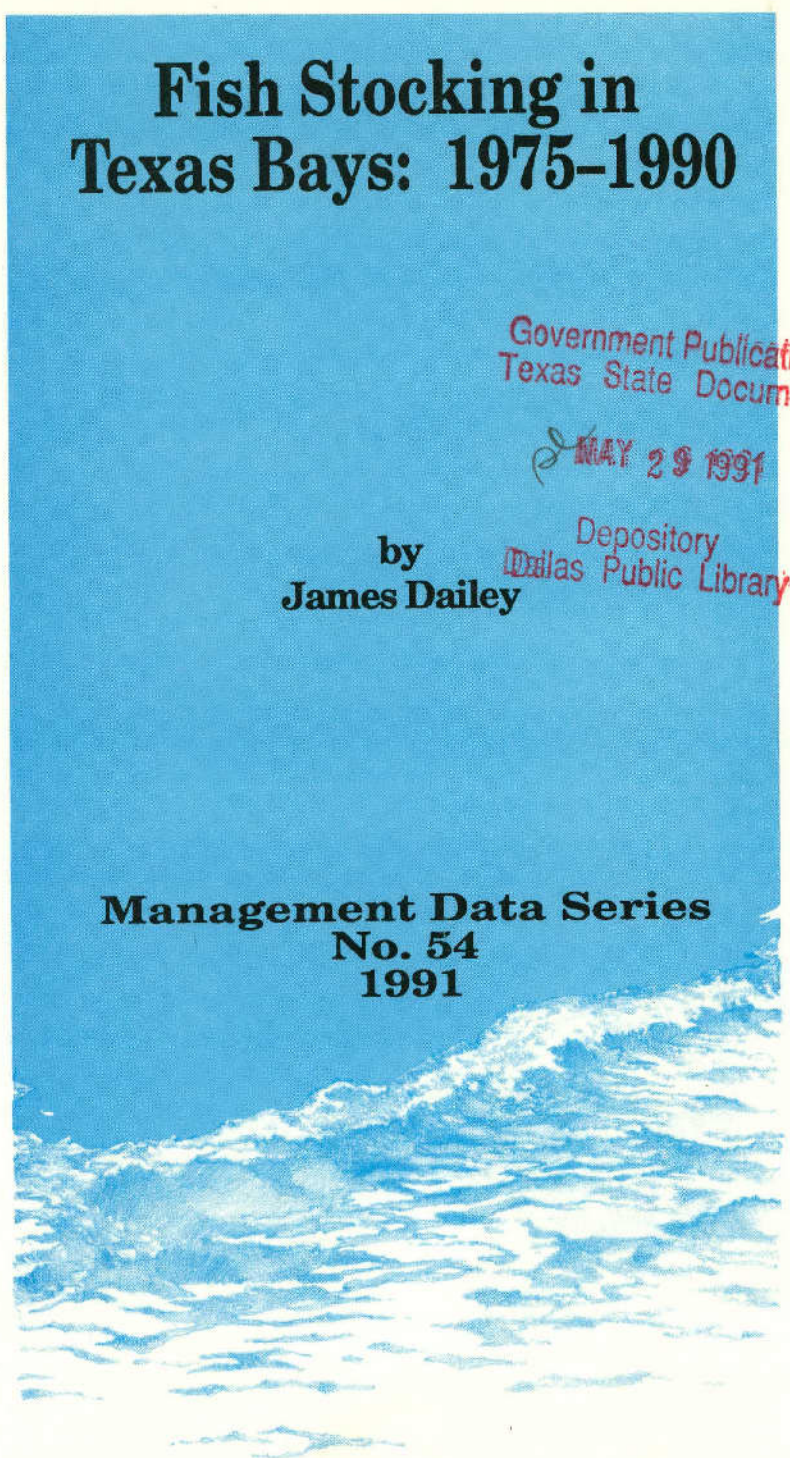
by
James Dailey

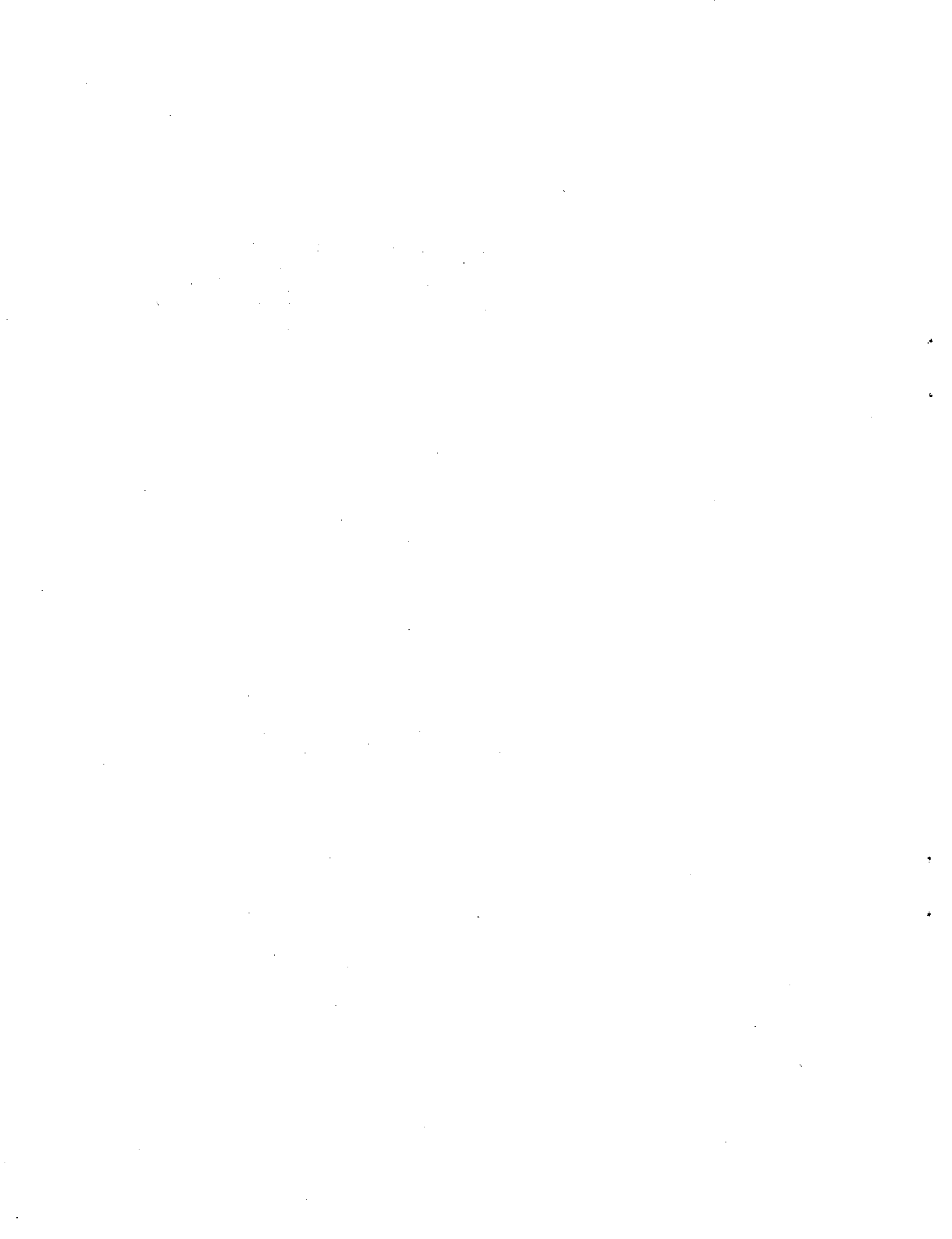
Depository
Dallas Public Library

Management Data Series
No. 54
1991



TEXAS
PARKS & WILDLIFE
DEPARTMENT
FISHERIES DIVISION
4200 Smith School Road
Austin, Texas 78744





FISH STOCKING IN TEXAS BAYS: 1975-1990

by

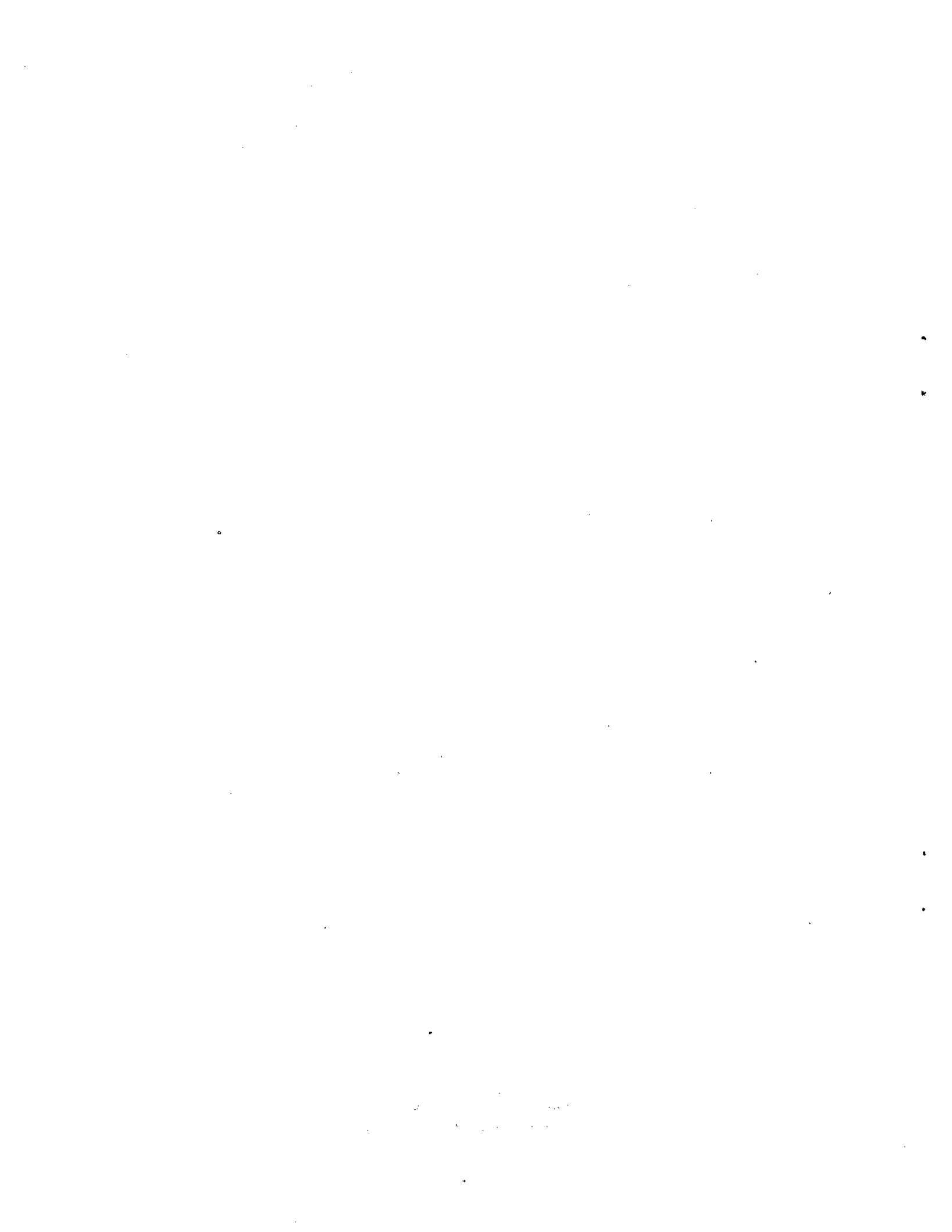
James Dailey

MANAGEMENT DATA SERIES

No. 54

1991

Texas Parks and Wildlife Department
Coastal Fisheries Branch
4200 Smith School Road
Austin, Texas 78744



ABSTRACT

In 1990, 183,896,448 red drum (Sciaenops ocellatus) fry and fingerlings were stocked into Texas bays. Upper Laguna Madre received 34,887 fingerling spotted seatrout (Cynoscion nebulosus). Galveston Bay and Sabine Lake received 337,880 striped bass (Morone saxatilis) fingerlings.



INTRODUCTION

Stocking saltwater fishes into Texas bays is an integral part of the Texas Parks and Wildlife Department's (TPWD) management program. The present report is a summary of saltwater stockings that occurred in Texas bays during 1975-1990 by or in cooperation with TPWD. The objective of this report is to update saltwater stocking activities. Differences in the number in this report compared to previous versions are due to updating the data base and this report should be considered the most accurate to date.

MATERIALS AND METHODS

Red drum (Sciaenops ocellatus) spawned and reared by the TPWD facility at the Gulf Coast Conservation Association/Central Power and Light Company/Marine Development Center and reared at the Dow Chemical Company/TPWD pond facility were stocked into Texas Bays. Spotted seatrout (Cynoscion nebulosus) stocked into upper Laguna Madre were spawned by the TPWD at the Perry R. Bass Marine Fisheries Research Station during experimental culture studies and reared and stocked by the Dow Chemical Company/TPWD pond facility. Striped bass (Morone saxatilis) fingerlings stocked into Galveston Bay and Sabine Lake were supplied from the A. E. Wood State Fish Hatchery, Inks Lake Federal Fish Hatchery and Tishomingo National Fish Hatchery. Stocking locations are identified by grid number. Grid latitudes and longitudes can be found in the 1990 TPWD Marine Resource Monitoring Operations Manual.

RESULTS AND DISCUSSION

A total of 183,896,448 red drum fry and fingerlings were stocked into all Texas bay systems in 1990 (Tables 1 and 2; Appendix A). Galveston Bay and Sabine Lake were stocked with 337,880 striped bass fingerlings (Tables 1 and 3; Appendix A). Upper Laguna Madre received 34,887 spotted seatrout fingerlings (Tables 1 and 6; Appendix A).

Table 1. Number of each species stocked into Texas bays each year from October 1975 through December 1990. Blank indicates none stocked.

Year	Species	Bay system								Total	
		Sabine Lake	Galveston	East Matagorda	Matagorda	San Antonio	Aransas	Corpus Christi	Upper Laguna Madre		Lower Laguna Madre
1975	Red drum	20,000			102,000		17,000	12,703,000			12,842,000
	Striped bass					55,645					55,645
1976	Red drum				6,842						6,842
	Striped bass					140,753					140,753
1977	Striped bass	9,950				221,834		2,970			234,754
1978	Red drum		130		40,000	2,250,000	63,603				2,353,733
1979	Red drum		4,724,500		1,844,000	2,660,000	3,811,685	2,314,000	18,596		15,372,781
1980	Red drum		82,514	32,000	9,836,000	6,800,000	276,540	6,500,000	1,900,000		25,427,054
1981	Red drum				7,276,000		577,500	1,500,000			9,353,500
1982	Red drum						280,000				280,000
1983	Red drum		1,018,735			2,319,065		4,708,456			8,046,256
	Striped bass		830,000		23,500						853,500
	Spotted seatrout				50,000						50,000
1984	Red drum				287	5,978,940			532,276	610,055	7,121,558
	Striped bass		1,215,000		4						1,215,004
	Spotted seatrout				42,609			4,438			47,047
	Black drum				35,249						35,249
1985	Red drum		1,625,010			4,532,852	422,765	1,122,668		1,237,899	8,941,285
	Striped bass		1,512,500								1,512,500
	Spotted seatrout				915,188						915,188
	Snook						333				333

N

Table 1. (Cont'd.).

Year	Bay system									Total
	Sabine Lake	Galveston	East Matagorda	Matagorda	San Antonio	Aransas	Corpus Christi	Upper Laguna Madre	Lower Laguna Madre	
1986										
Red drum	612,786	2,091,356	340,432	1,319,529		221,500		1,100,771	1,099,829	6,786,203
Striped bass		4,963,321								4,963,321
Spotted seatrout		42,073		241,000						283,073
1987										
Red drum	309,294	1,849,030	250,676	1,194,936	794,160	23,581,403	487,570	250,000	1,049,008	29,766,077
Striped bass		4,650,932								4,650,932
Spotted seatrout				423,573						423,573
1988										
Red drum	545,704	2,360,492		122,393		61,674,515		1,274,174	1,633,007	67,610,285
Striped bass		4,777,854								4,777,854
Spotted seatrout				14,127,903						14,127,903
Black drum										
1989										
Red drum		929,615	1,019,603	1,809,201	1,003,698	76,173,435	977,901	225,999		82,139,452
Striped bass		5,398,240								5,398,240
Spotted seatrout			14,313	60,000						74,313
1990										
Red drum	277,820	2,947,597	655,598	2,973,532	1,316,155	168,970,195	1,615,888	2,362,729	2,776,934	183,896,448
Striped bass	141,244	196,633								337,880
Spotted seatrout								34,887		34,887
All years										
Red drum	1,765,604	17,628,979	2,298,309	26,524,720	27,654,870	336,070,141	31,929,483	7,664,545	8,406,732	459,943,383
Striped bass	151,194	23,544,480								24,140,383
Spotted seatrout		42,073	14,313	15,860,273				39,325		15,955,984
Black drum				35,249						35,249
Snook						333				333

Table 2. Number of red drum eggs, fry, and fingerlings stocked into Texas bays each year from October 1975 through December 1990. Blank indicates none stocked.

Year	Life stage	Bay system								Total	
		Sabine Lake	Galveston	East Matagorda	Matagorda	San Antonio	Aransas	Corpus Christi	Upper Laguna Madre		Lower Laguna Madre
1975	Fry							12,700,000			12,700,000
	Fingerlings	20,000			102,000		17,000	3,000			142,000
1976	Fingerlings				6,842						6,842
1978	Fry				40,000	2,250,000					2,290,000
	Fingerlings		130				63,603				63,733
1979	Eggs							500,000			500,000
	Fry		4,724,500		1,500,000	2,660,000	2,830,000	1,814,000			13,528,500
	Fingerlings				344,000		981,685		18,596		1,344,281
1980	Eggs							6,500,000			6,500,000
	Fry				9,836,000	6,800,000			1,900,000		18,536,000
	Fingerlings		82,514	32,000			276,540				391,054
1981	Eggs							1,500,000			1,500,000
	Fry				7,276,000						7,276,000
	Fingerlings						577,500				577,500
1982	Fingerlings						280,000				280,000
1983	Fry		1,018,735			2,319,065		4,708,456			1,018,735
	Fingerlings										7,027,521
1984	Fingerlings				287	5,978,940			532,276	610,055	7,121,558
1985	Fingerlings		1,625,010			4,532,852	422,765	1,122,668		1,237,899	8,941,194
1986	Fry						221,500				221,500
	Fingerlings	612,786	2,091,356	340,432	1,319,529				1,100,771	1,099,829	6,564,703
1987	Eggs						4,306,000				4,306,000
	Fry						19,275,403				19,275,403
	Fingerlings	309,294	1,849,030	250,676	1,194,936	794,160		487,570	250,000	1,049,008	6,184,674

Table 2. (Cont'd.)

Year	Bay system									Total
	Sabine Lake	Galveston	East Matagorda	Matagorda	San Antonio	Aransas	Corpus Christi	Upper Laguna Madre	Lower Laguna Madre	
1988										
Eggs						18,095,000				18,095,000
Fry						41,702,640				41,702,640
Fingerlings	545,704	2,360,492		122,393		1,876,765		1,274,174	1,633,007	7,812,535
1989										
Fry						75,144,067				75,144,067
Fingerlings		929,615	1,019,603	1,809,201	1,003,698	1,029,368	977,901	225,999		6,995,385
1990										
Fry		485,908				167,139,094	1,559,900	37,000		169,221,902
Fingerlings	277,820	2,461,689	655,598	2,973,532	1,316,155	1,831,101	55,988	2,325,729	2,776,934	14,674,546
All years										
Eggs						22,401,000	8,500,000			30,901,000
Fry		6,229,143		18,652,000	11,710,000	306,312,704	16,073,900	1,937,000		360,914,747
Fingerlings	1,765,604	11,399,863	2,298,309	7,872,720	15,944,870	7,356,327	7,355,583	5,727,545	8,406,732	68,127,553
Total	1,765,604	17,629,006	2,298,309	26,524,720	27,654,870	336,070,031	31,929,483	7,664,545	8,406,732	459,943,300

Table 3. Number of striped bass fry and fingerlings stocked into Texas bays each year from October 1975 through August 1990. Blank indicates none stocked.

Year	Life stage	Bay system				Total	
		Sabine Lake	Galveston	Matagorda	San Antonio		Corpus Christi
1975	Fingerlings				55,645	55,645	
1976	Fingerlings				140,753	140,753	
1977	Fingerlings	9,950			221,834	2,970	234,754
1983	Fry		830,000				830,000
	Fingerlings			23,500			23,500
1984	Fry		1,215,000				1,215,000
	Fingerlings			4			4
1985	Fry		1,512,500				1,512,500
1986	Fry		4,792,239				4,792,239
	Fingerlings		171,082				171,082
1987	Fry		4,644,085				4,644,085
	Fingerlings		6,847				6,847
1988	Fry		4,464,400				4,464,400
	Fingerlings		313,454				313,454
1989	Fry		5,049,000				5,049,000
	Fingerling		349,240				349,240

Table 3. (Cont'd).

Year	Bay system					Total
	Sabine Lake	Galveston	Matagorda	San Antonio	Corpus Christi	
1990						
Fry Fingerlings	141,244	196,636				337,880
All years						
Fry Fingerlings	151,194	22,507,224 1,037,259	23,504	418,232	2,970	1,633,159
Total	151,194	23,544,483	23,504	418,232	2,970	24,140,383

Table 4. Number of spotted seatrout fry and fingerlings stocked into Texas bays each year from August 1983 through October 1990. Blank indicates none stocked.

Year	Galveston Bay	East Matagorda Bay	Matagorda Bay	Upper Laguna Madre	Total
1983					
Fingerlings			50,000		50,000
1984					
Fry			41,000		41,000
Fingerlings			1,609	4,438	6,047
1985					
Fry			665,700		665,700
Fingerlings			249,488		249,488
1986					
Fry			9,000		9,000
Fingerlings	42,073 ^a		232,000		274,073
1987					
Fry			325,000		325,000
Fingerlings			98,573		98,573
1988					
Fry			13,900,200		13,900,200
Fingerlings			227,703		227,703
1989					
Fry		10,000	60,000		70,000
Fingerlings		4,313			4,313
1990					
Fry					
Fingerlings				34,887	34,887
All years					
Fry		10,000	15,900,000		15,010,900
Fingerlings	42,073 ^a	4,313	859,373	39,325	945,084

^aCedar Lakes (Freeport) area.

Appendix A. Fish stocking dates and sites.

Table A.1. Date, location, and number of red drum eggs stocked in the Corpus Christi Bay system as reported by the University of Texas (UT) Marine Science Institute.

Date	Site	No.
Oct 08 1979	Redfish Bay, Harbor Island	500,000
Sep 26 1980	Corpus Christi Channel, near Port Aransas Airport	500,000
Oct 05	Corpus Christi Channel, near Port Aransas Airport	500,000
13	Corpus Christi Channel at UT Lab	500,000
16	Caster's Cut	500,000
19	Corpus Christi Channel at UT Lab	500,000
23	Corpus Christi Channel at UT Lab	500,000
24	Caster's Cut	500,000
25	Ponds-Charlie's Pasture	500,000
26	Ponds-Charlie's Pasture	500,000
27	Corpus Christi Channel at UT Lab	500,000
Nov 03	Caster's Cut	500,000
09	Corpus Christi Channel at UT Lab	500,000
12	Corpus Christi Channel at UT Lab	500,000
Sep 03 1981	Pond near Port Aransas Airport	500,000
05	Corpus Christi Channel at UT Lab	500,000
15	Corpus Christi Channel at UT Lab	500,000

Table A.2. Date, location, and number of red drum eggs placed in Texas bays by TPWD.

Date	Bay system	Grid	No.
Apr 21 1987	Aransas	329	1,256,000
Nov 12	Aransas	122	3,050,000
Apr 25 1988	Aransas	274	3,620,000
29	Aransas	250	4,570,000
May 04	Aransas	237	3,240,000
05	Aransas	237	3,490,000
06	Aransas	76	350,000
Jun 08	Aransas	330	1,860,000
09	Aransas	333	250,000
11	Aransas	339	495,000
13	Aransas	332	220,000
Total			22,401,000

Table A.3. Date, location, and number of red drum fry (1-3 days old) stocked in Texas bays by the TPWD.

Date	Bay system	Minor Bay	Grid	No.
Aug 25 1975	Corpus Christi	Redfish	82	1,200,000
Sep 29	Corpus Christi	Corpus Christi	208	1,000,000
Oct 03	Corpus Christi	Corpus Christi	208	500,000
Nov 09	Corpus Christi	Redfish	82	10,000,000
Nov 10 1978	San Antonio	Espiritu Santo	212	2,250,000
13	Matagorda	Tres Palacios	71	20,000
16	Matagorda	Tres Palacios	71	20,000
May 11 1979	Galveston	West	718	540,000
12	Galveston	West	718	696,500
13	Galveston	West	718	1,100,000
14	Galveston	West	718	597,000
15	Galveston	West	718	891,000
18	Galveston	West	718	400,000
19	Galveston	West	718	500,000
Jul 14	Corpus Christi	Corpus Christi	207	914,000
21	Corpus Christi	Corpus Christi	207	900,000
Aug 20	San Antonio	Espiritu Santo	277	300,000
23	San Antonio	Espiritu Santo	277	300,000
26	San Antonio	Espiritu Santo	277	800,000
28	Aransas	Redfish	310	100,000
30	San Antonio	Espiritu Santo	277	900,000
Sep 04	San Antonio	Espiritu Santo	277	360,000
13	Aransas	Redfish	310	80,000
Oct 06	Aransas	Redfish	310	800,000
10	Aransas	Redfish	310	1,350,000
12	Aransas	Redfish	310	500,000
18	Matagorda	Carancahua	185	1,500,000
Jul 15 1980	Matagorda	Carancahua	185	1,600,000
16	Matagorda	Carancahua	185	700,000
17	Matagorda	Carancahua	185	780,000
18	Matagorda	Carancahua	185	400,000
19	Matagorda	Carancahua	185	600,000
20	Matagorda	Carancahua	185	470,000
24	Matagorda	Carancahua	185	300,000
Aug 06	Matagorda	Carancahua	185	186,000
27	San Antonio	San Antonio	47	1,700,000
28	San Antonio	San Antonio	47	1,300,000
29	San Antonio	Barroom	212	2,200,000
31	San Antonio	Barroom	212	1,600,000
Sep 10	Upper Laguna Madre	Upper Laguna Madre	78	500,000
14	Upper Laguna Madre	Upper Laguna Madre	78	600,000
15	Upper Laguna Madre	Upper Laguna Madre	78	500,000
21	Upper Laguna Madre	Upper Laguna Madre	78	300,000

Table A.3. (Cont'd.).

Date	Bay system	Minor Bay	Grid	No.
Oct 07 1980	Matagorda	Matagorda	154	1,000,000
28	Matagorda	Tres Palacios	38	1,300,000
30	Matagorda	Matagorda	154	300,000
31	Matagorda	Matagorda	154	700,000
Mar 13 1981	Matagorda	Matagorda	154	772,000
14	Matagorda	Matagorda	154	804,000
17	Matagorda	Matagorda	154	1,700,000
20	Matagorda	Matagorda	154	700,000
22	Matagorda	Matagorda	154	1,400,000
24	Matagorda	Matagorda	154	1,900,000
Aug 08 1983	Galveston	West	579	1,018,735
Apr 22 1986	Aransas	Little Bay	236	221,500
Apr 11 1987	Aransas	Redfish Bay	310	1,007,500
12	Aransas	Redfish Bay	310	463,000
May 03	Aransas	South Bay	342	613,875
04	Aransas	South Bay	342	565,725
05	Aransas	South Bay	342	425,125
06	Aransas	South Bay	342	708,700
08	Aransas	South Bay	342	426,450
09	Aransas	South Bay	342	475,950
12	Aransas	South Bay	342	369,075
13	Aransas	South Bay	342	288,325
14	Aransas	South Bay	342	833,150
15	Aransas	South Bay	342	1,417,875
16	Aransas	South Bay	342	472,625
17	Aransas	South Bay	342	412,300
19	Aransas	South Bay	342	825,750
20	Aransas	South Bay	342	2,916,975
28	Aransas	South Bay	342	1,922,800
Jun 07	Aransas	South Bay	342	470,250
29	Aransas	South Bay	342	35,150
Jul 06	Aransas	South Bay	342	174,800
07	Aransas	South Bay	342	267,900
08	Aransas	South Bay	342	357,041
09	Aransas	South Bay	342	300,437
10	Aransas	South Bay	342	242,725
Sep 02	Aransas	South Bay	342	349,675
06	Aransas	Copano	185	576,650
07	Aransas	Copano	185	260,300
08	Aransas	Copano	185	136,275
09	Aransas	Aransas	122	37,050
10	Aransas	Aransas	122	81,225
14	Aransas	Aransas	146	177,175
24	Aransas	Aransas	122	190,000
27	Aransas	Aransas	122	843,550
29	Aransas	Aransas	122	284,525

Table A.3. (Cont'd.).

Date	Bay system	Minor Bay	Grid	No.
Oct 07 1987	Aransas	Aransas	122	66,500
14	Aransas	Aransas	122	88,500
15	Aransas	Aransas	122	190,475
Nov 14	Aransas	Aransas	122	385,225
15	Aransas	South Bay	332	283,575
16	Aransas	South Bay	332	602,300
20	Aransas	Aransas	122	144,400
21	Aransas	South Bay	332	1,512,875
Apr 01 1988	Aransas	Aransas	291	663,100
04	Aransas	Aransas	280	555,940
05	Aransas	Aransas	280	209,000
06	Aransas	Redfish	285	1,000,000
06	Aransas	Redfish	285	495,300
07	Aransas	Mesquite	80	622,250
08	Aransas	Aransas	307	1,003,200
10	Aransas	Redfish	321	550,000
10	Aransas	South Bay	330	530,575
12	Aransas	Redfish	312	968,525
13	Aransas	South	338	195,225
25	Aransas	Copano	212	1,096,775
28	Aransas	Copano	232	410,875
29	Aransas	Copano	146	1,148,550
30	Aransas	Redfish	285	702,050
May 04	Aransas	Little Bay	237	486,425
06	Aransas	Sundown	76	100,000
07	Aransas	St. Charles	310	781,375
08	Aransas	South	285	395,475
10	Aransas	Redfish	280	142,500
11	Aransas	Little Bay	236	157,700
12	Aransas	Redfish	285	112,100
13	Aransas	Port	157	585,200
14	Aransas	Redfish	285	311,600
15	Aransas	Redfish	295	408,975
16	Aransas	Redfish	304	462,175
17	Aransas	Redfish	311	465,975
18	Aransas	Redfish	285	61,750
19	Aransas	St. Charles	23	332,025
20	Aransas	Mesquite	106	796,575
21	Aransas	Port	247	999,875
22	Aransas	Carlos	127	56,050
23	Aransas	Aransas	154	1,007,475
24	Aransas	Carlos	127	396,150
25	Aransas	Port	247	211,850
26	Aransas	Carlos	102	620,350
27	Aransas	Copano	247	168,964
27	Aransas	Carlos	129	225,286

Table A.3. (Continued)

Date	Bay system	Minor Bay	Grid	No.
May 28 1988	Aransas	Mesquite	106	71,566
28	Aransas	Copano	46	357,834
29	Aransas	Port	247	244,625
30	Aransas	Copano	248	347,225
31	Aransas	Port	261	316,825
31	Aransas	Port	247	833,150
Jun 01	Aransas	Copano	232	642,275
06	Aransas	Aransas	307	196,700
07	Aransas	South	331	167,200
08	Aransas	South	330	580,925
09	Aransas	South	332	857,825
11	Aransas	South	339	324,900
12	Aransas	Redfish	319	218,500
13	Aransas	Redfish	319	1,031,225
14	Aransas	South	330	857,850
15	Aransas	Copano	87	158,175
16	Aransas	Copano	20	118,750
17	Aransas	St. Charles	50	453,625
19	Aransas	Copano	19	206,000
20	Aransas	Little Bay	236	400,425
21	Aransas	Aransas	122	281,675
Jul 11	Aransas	St. Charles	97	271,700
20	Aransas	St. Charles	72	33,725
23	Aransas	Aransas	154	156,750
Aug 03	Aransas	Aransas	154	8,075
06	Aransas	Aransas	123	315,400
07	Aransas	Aransas	124	320,150
11	Aransas	St. Charles	72	38,000
12	Aransas	St. Charles	98	280,725
13	Aransas	St. Charles	74	167,200
14	Aransas	St. Charles	99	327,275
15	Aransas	St. Charles	41	221,350
21	Aransas	Aransas	243	242,725
Sep 13	Aransas	St. Charles	51	472,150
22	Aransas	St. Charles	51	51,300
24	Aransas	St. Charles	35	105,925
25	Aransas	St. Charles	35	332,975
26	Aransas	St. Charles	25	1,499,100
27	Aransas	St. Charles	25	694,925
28	Aransas	St. Charles	24	304,000
29	Aransas	Aransas	304	700,150
30	Aransas	Aransas	304	956,150
Oct 01	Aransas	Mesquite	157	895,375
04	Aransas	Aransas	306	1,030,625
05	Aransas	Little Bay	250	119,700
13	Aransas	Copano	19	347,225
14	Aransas	Aransas	153	472,150
16	Aransas	Aransas	291	1,148,075

Table A.3. (Continued)

Date	Bay system	Minor Bay	Grid	No.
Oct 26 1988	Aransas	St. Charles	102	90,225
28	Aransas	St. Charles	1	781,375
29	Aransas	Aransas	307	80,750
Nov 07	Aransas	St. Charles	6	580,450
08	Aransas	St. Charles	23	95,475
09	Aransas	St. Charles	51	154,850
13	Aransas	St. Charles	97	102,125
Mar 25 1989	Aransas	South	337	89,500
26	Aransas	South	337	92,500
27	Aransas	South	337	84,500
28	Aransas	St. Charles	97	96,500
29	Aransas	St. Charles	97	156,225
30	Aransas	St. Charles	97	206,625
31	Aransas	Redfish	285	1,327,000
Apr 01	Aransas	South	337	720,575
02	Aransas	South	322	978,325
03	Aransas	South	330	369,075
04	Aransas	South	331	278,825
05	Aransas	Copano	212	827,925
06	Aransas	Port	232	615,125
07	Aransas	Port	247	20,000
08	Aransas	Port	261	25,750
09	Aransas	St. Charles	122	50,000
10	Aransas	Redfish	330	20,000
11	Aransas	Aransas	291	1,232,150
12	Aransas	Aransas	308	1,149,975
13	Aransas	Port	246	103,075
14	Aransas	Allyn's Lake	280	306,375
15	Aransas	Aransas	291	459,850
16	Aransas	Aransas	306	928,625
17	Aransas	St. Charles	124	276,000
18	Aransas	St. Charles	12	538,000
19	Aransas	St. Charles	51	41,500
20	Aransas	St. Charles	35	10,000
21	Aransas	St. Charles	23	814,750
22	Aransas	Dunham	100	445,500
23	Aransas	Mesquite	156	30,000
24	Aransas	Carlos	127	100,000
25	Aransas	Mesquite	130	252,225
26	Aransas	Redfish	320	191,900
27	Aransas	Redfish	321	123,600
28	Aransas	Redfish	312	277,400
29	Aransas	Mesquite	107	1,250,000
29	Aransas	Redfish	304	1,271,300
30	Aransas	Redfish	295	1,511,450

Table A.3. (Continued)

Date	Bay system	Minor Bay	Grid	No.
May 01 1989	Aransas	South	339	1,299,600
02	Aransas	South	332	20,000
03	Aransas	South	333	40,000
04	Aransas	South	330	20,000
05	Aransas	South	338	870,200
06	Aransas	Redfish	320	520,600
07	Aransas	Redfish	329	1,014,125
08	Aransas	Redfish	321	133,000
09	Aransas	South	322	20,000
11	Aransas	South	330	95,000
12	Aransas	South	330	136,325
13	Aransas	Aransas	308	495,425
14	Aransas	Aransas	323	934,325
15	Aransas	Mesquite	55	393,300
16	Aransas	Aransas	306	303,525
17	Aransas	St. Charles	124	347,650
18	Aransas	St. Charles	51	103,075
19	Aransas	Little Bay	236	1,046,425
20	Aransas	St. Charles	22	345,800
21	Aransas	St. Charles	38	87,400
22	Aransas	St. Charles	23	300,000
23	Aransas	Dunham	100	664,525
24	Aransas	Redfish	285	23,000
26	Aransas	Aransas	96	769,025
27	Aransas	St. Charles	51	1,855,825
28	Aransas	Aransas	155	30,000
31	Aransas	Port	234	20,000
Jun 01	Aransas	Carlos	127	27,500
02	Aransas	Redfish	319	180,500
05	Aransas	Redfish	294	122,075
08	Aransas	Port	248	119,700
09	Aransas	Redfish	313	493,525
13	Aransas	Copano	215	656,450
15	Aransas	Copano	19	133,000
16	Aransas	Aransas	295	20,000
17	Aransas	Aransas	260	60,145
18	Aransas	Copano	168	58,150
19	Aransas	Copano	20	40,000
20	Aransas	Copano	19	50,000
21	Aransas	Port	272	2,587,800
22	Aransas	Copano	70	50,000
23	Aransas	Copano	47	967,100
24	Aransas	Copano	32	592,325
25	Aransas	Copano	20	722,575
26	Aransas	Salt Lake	193	1,379,875
27	Aransas	South	330	1,317,425
28	Aransas	Aransas	124	3,189,625

Table A.3. (Continued)

Date	Bay system	Minor Bay	Grid	No.
Jun 29	Aransas	Dunham	100	301,150
30	Aransas	Copano	248	171,950
Jul 01	Aransas	Aransas	333	396,625
02	Aransas	Redfish	312	576,175
03	Aransas	Aransas	307	1,682,925
04	Aransas	South	339	2,169,325
05	Aransas	South	338	1,723,775
06	Aransas	South	332	1,002,250
07	Aransas	Redfish	320	144,400
08	Aransas	Mesquite	76	256,500
09	Aransas	St. Charles	99	300,675
12	Aransas	St. Charles	50	191,425
13	Aransas	Port	248	44,650
14	Aransas	Redfish	295	264,100
22	Aransas	St. Charles	49	8,225
24	Aransas	Aransas	280	15,000
28	Aransas	Aransas	306	80,000
Aug 01	Aransas	Aransas	291	65,550
02	Aransas	Port	272	140,000
06	Aransas	St. Charles	98	186,200
07	Aransas	St. Charles	99	65,550
08	Aransas	St. Charles	97	153,900
09	Aransas	Aransas	242	85,975
10	Aransas	Redfish	321	8,550
11	Aransas	Copano	213	4,997
12	Aransas	Mesquite	157	300,000
15	Aransas	Aransas	308	1,844,425
16	Aransas	St. Charles	51	1,250,000
16	Aransas	St. Charles	74	1,278,125
17	Aransas	Copano	234	167,200
19	Aransas	Carlos	129	555,750
20	Aransas	St. Charles	25	2,061,025
21	Aransas	Mesquite	80	347,225
22	Aransas	South	332	115,425
23	Aransas	St. Charles	73	571,900
24	Aransas	Port	261	131,575
25	Aransas	Copano	234	382,135
25	Aransas	Aransas	225	382,140
26	Aransas	South	322	943,825
27	Aransas	St. Charles	24	274,550
28	Aransas	St. Charles	49	898,225
29	Aransas	Aransas	202	302,575
30	Aransas	St. Charles	74	463,125
31	Aransas	St. Charles	99	241,300

Table A.3. (Continued)

Date	Bay system	Minor Bay	Grid	No.
Sep 01	Aransas	Aransas	177	748,125
02	Aransas	Aransas	178	1,410,275
03	Aransas	Copano	19	68,400
04	Aransas	South	329	31,825
05	Aransas	Copano	119	296,400
06	Aransas	Copano	118	195,225
07	Aransas	Aransas	154	441,750
08	Aransas	Little Bay	236	441,750
09	Aransas	Copano	71	983,775
10	Aransas	Aransas	308	904,875
12	Aransas	St. Charles	25	666,350
12	Aransas	Redfish	321	600,000
13	Aransas	Redfish	304	220,400
14	Aransas	Copano	32	595,650
15	Aransas	Redfish	312	148,675
17	Aransas	Port	246	350,550
18	Aransas	St. Charles	97	20,000
Oct 31	Aransas	South	329	642,200
Nov 01	Aransas	South	330	1,613,725
02	Aransas	Port	260	113,050
03	Aransas	Port	261	111,150
07	Aransas	South	320	40,000
08	Aransas	Aransas	122	21,375
Mar 16 1990	Aransas	Port	272	342,475
23	Aransas	St. Charles	97	219,000
29	Aransas	Copano	146	516,300
30	Aransas	Copano	95	575,700
Apr 03	Aransas	Aransas	122	86,450
06	Aransas	Little Bay	236	39,425
07	Aransas	Copano	146	69,350
08	Aransas	Little Bay	236	746,700
09	Aransas	Little Bay	250	565,725
10	Aransas	Port	247	376,675
11	Aransas	Redfish	274	154,850
12	Aransas	Redfish	294	148,200
13	Aransas	Port	247	147,725
17	Aransas	Copano	146	180,975
23	Aransas	Copano	146	1,073,685
24	Aransas	Redfish	312	848,825
25	Aransas	Redfish	295	2,293,775
26	Aransas	Copano	146	767,600
27	Aransas	Redfish	364	2,290,450
28	Aransas	Aransas	124	3,483,225
28	Aransas	St. Charles	97	3,400,000
29	Aransas	Copano	146	664,525
30	Aransas	Copano	146	744,800
May 01	Aransas	Carlos	127	1,666,062
01	Aransas	Copano	212	1,666,062
02	Aransas	Copano	169	2,933,305

Table A.3. (Continued)

Date	Bay system	Minor Bay	Grid	No.
May 03	Aransas	Redfish	320	473,575
05	Aransas	Port	246	1,472,831
05	Aransas	St. Charles	51	3,669,994
06	Aransas	St. Charles	99	5,867,675
07	Aransas	Dunham	100	825,775
08	Aransas	Aransas	280	276,925
09	Aransas	Aransas	328	716,300
10	Corpus Christi	Redfish	64	444,125
11	Corpus Christi	Redfish	64	613,700
12	Corpus Christi	Redfish	64	502,075
13	Upper Laguna Madre	Upper Laguna Madre	78	37,000
14	Aransas	Redfish	321	708,225
15	Aransas	Copano	71	996,550
16	Aransas	Copano	70	250,800
17	Aransas	Salt Lake	193	280,250
18	Aransas	Port	247	895,550
18	Aransas	Port	261	755,550
19	Aransas	Copano	119	525,825
20	Aransas	Port	248	2,233,926
21	Aransas	Copano	71	712,975
22	Aransas	Copano	232	51,775
23	Aransas	Aransas	306	1,164,475
24	Aransas	Copano	234	1,441,150
25	Aransas	Aransas	295	366,700
26	Aransas	Copano	145	265,050
27	Aransas	St. Charles	51	3,042,375
28	Aransas	Copano	70	1,314,088
28	Aransas	Copano	71	1,314,087
29	Aransas	Redfish	320	291,650
Jun 01	Aransas	Redfish	304	3,040,950
01	Aransas	Copano	119	3,040,950
02	Aransas	Copano	146	2,040,125
02	Aransas	Copano	95	2,040,125
03	Aransas	Port	248	802,650
04	Aransas	Copano	234	829,350
05	Aransas	Redfish	312	2,367,875
06	Aransas	Redfish	295	2,462,638
06	Aransas	Copano	146	2,462,637
07	Aransas	St. Charles	97	738,150
08	Aransas	St. Charles	99	1,211,725
09	Aransas	Aransas	154	700,600
10	Aransas	St. Charles	51	1,620,225
11	Aransas	Redfish	321	3,453,250
12	Aransas	Aransas	280	1,295,800
12	Aransas	Copano	90	1,295,800
13	Aransas	Aransas	307	938,425
14	Aransas	St. Charles	22	2,537,850
15	Aransas	Mission	39	628,900

Table A.3. (Continued)

Date	Bay system	Minor Bay	Grid	No.
Jun 16	Aransas	Aransas	308	335,825
18	Aransas	Copano	71	551,000
19	Aransas	Port	261	3,695,925
20	Aransas	South	330	2,240,475
21	Aransas	Allyn's Lake	280	1,671,050
22	Aransas	St. Charles	51	1,059,250
23	Aransas	South	339	2,104,725
24	Aransas	South	332	2,882,775
25	Aransas	South	333	2,333,675
26	Aransas	South	330	490,200
27	Aransas	South	338	76,000
28	Aransas	Aransas	323	1,045,475
29	Aransas	Aransas	308	826,025
30	Aransas	Allyn's Lake	280	1,339,025
Jul 01	Aransas	Aransas	291	579,975
02	Aransas	Aransas	306	588,525
03	Aransas	Aransas	225	348,650
04	Aransas	Redfish	313	1,482,950
05	Aransas	Copano	119	922,925
06	Aransas	Redfish	320	359,100
07	Aransas	Copano	234	2,106,150
08	Aransas	Redfish	285	1,103,425
09	Aransas	Aransas	295	530,575
10	Aransas	Port	248	1,586,500
11	Aransas	Redfish	312	1,727,575
12	Aransas	Aransas	177	170,525
13	Aransas	Copano	19	257,925
15	Aransas	Mesquite	77	682,100
16	Aransas	Copano	146	132,525
17	Aransas	Copano	146	281,675
20	Aransas	Little Bay	250	366,225
27	Aransas	Copano	144	1,551,350
28	Aransas	St. Charles	97	537,700
29	Aransas	Aransas	154	114,950
30	Aransas	Redfish	313	3,985,247
31	Aransas	Copano	215	1,282,500
Aug 01	Aransas	Copano	214	892,525
03	Aransas	St. Charles	98	2,669,500
04	Aransas	Mesquite	130	179,075
05	Aransas	Mesquite	106	273,125
06	Aransas	St. Charles	74	96,300
07	Aransas	St. Charles	25	2,402,075
08	Aransas	Copano	213	987,050
09	Aransas	Copano	70	229,425
10	Aransas	Aransas	280	314,450
13	Aransas	Copano	71	1,464,900
14	Aransas	Dunham	126	1,388,125
15	Aransas	Aransas	147	123,500
19	Aransas	Port	247	417,050

Table A.3. (Continued)

Date	Bay system	Minor Bay	Grid	No.
Aug 21	Aransas	Aransas	304	77,900
23	Aransas	Copano	232	510,150
24	Aransas	St. Charles	51	1,501,950
25	Aransas	St. Charles	35	1,338,075
26	Aransas	Redfish	285	1,000,825
27	Aransas	Dunham	126	287,850
28	Aransas	St. Charles	49	133,000
29	Aransas	Redfish	321	2,663,307
30	Aransas	Port	234	390,450
31	Aransas	Copano	119	358,150
Sep 01	Aransas	Aransas	280	990,000
02	Aransas	Aransas	306	1,556,575
03	Aransas	Aransas	291	179,075
04	Aransas	South	329	1,452,075
07	Aransas	Port	261	2,392,650
08	Aransas	Redfish	312	522,500
09	Aransas	Dunham	100	73,000
10	Aransas	Copano	146	817,475
11	Aransas	St. Charles	97	2,862,350
11	Galveston	East Bay	228	485,908
12	Aransas	Aransas	295	242,250
14	Aransas	Copano	137	338,675
16	Aransas	Dunham	100	372,875
17	Aransas	St. Charles	99	372,400
18	Aransas	Copano	145	422,750
19	Aransas	Aransas	95	145,350
21	Aransas	Redfish	196	405,650
22	Aransas	Aransas	304	165,775
23	Aransas	St. Charles	35	424,650
24	Aransas	Redfish	285	360,525
30	Aransas	Aransas	291	1,345,200
Oct 09	Aransas	Redfish	329	1,224,075

Table A.4. Date, location, and number of red drum fingerlings stocked in Texas bays. Blanks indicate no data.

Date	Bay system	Minor Bay	Grid	No.	Total length (mm)		No. tagged
					Range	Mean	
Oct 02 1975	Sabine Lake	Sabine Lake	127	20,000		31	
02	Matagorda	Matagorda	226	10,000		31	
02	Matagorda	Turtle	38	40,000		31	
02	Matagorda	Tres Palacios	57	5,000		31	
02	Matagorda	Tres Palacios	41	5,000		31	
02	Aransas	Copano	248	17,000		31	
02	Corpus Christi	Nueces	68	3,000		31	
08	Matagorda	Lavaca	18	42,000		33	
Apr 28 1976	Matagorda	Matagorda	154	6,842	102-203	152	5,942 ^a
Apr 25 1978	Galveston	West	618	130	152-203		130 ^b
Nov 16	Aransas	St. Charles	72	50,800	45-55	45	
20	Aransas	St. Charles	72	3,500	45-55	55	1,585 ^c
22	Aransas	St. Charles	72	8,000	45-55	52	1,998 ^c
Dec 06	Aransas	St. Charles	72	1,303	45-55	45	1,303 ^c
Jan 18 1979	Aransas	St. Charles	72	2,856	32-40	37	
Jun 06	Aransas	St. Charles	72	85,000	37-45		
07	Aransas	St. Charles	72	45,000	40-50	44	
08	Aransas	St. Charles	72	92,000	40-50	47	1,345 ^c
11	Aransas	St. Charles	25	291,000	35-40		
12	Aransas	St. Charles	25	358,000	35-40		
13	Aransas	St. Charles	11	83,000	40-55	54	
25	Aransas	St. Charles	72	1,834	64-89	76	1,834 ^c
26	Aransas	St. Charles	72	3,007	64-89	76	3,007 ^c
27	Aransas	St. Charles	72	5,638	64-89	76	5,638 ^c
28	Aransas	St. Charles	72	6,850	64-89	76	6,850 ^c
Jul 05	Aransas	St. Charles	72	7,500	85-107	102	7,500 ^c
24	Upper Laguna Madre	Upper Laguna Madre	78	14,600	38-64	48	

Table A.4. (Cont'd.).

Date	Bay system	Minor	Grid	No.	Total length (mm)		No. tagged
		Bay			Range	Mean	
Aug 16 1979	Upper Laguna Madre	Upper Laguna Madre	78	3,996	45-55		
Oct 23	Matagorda	Matagorda	226	34,000	39-45	43	
25	Matagorda	Matagorda	226	25,000	40-55	44	
30	Matagorda	Turtle	71	69,000	32-44	43	
Nov 01	Matagorda	Turtle	71	53,000	32-44	42	
05	Matagorda	Turtle	71	11,000	32-38		
06	Matagorda	Keller	145	142,000	25-32	30	
07	Matagorda	Turtle	71	10,000	25-32	32	
Jul 17 1980	Galveston	Jones Lake	539	46,000	35-45	40	
Aug 04	Aransas	St. Charles	25	18,940	30-55	32	
05	Aransas	St. Charles	25	40,100	40-50	43	3,974 ^c
06	Aransas	St. Charles	25	52,100	30-50	43	1,422 ^c
07	Aransas	St. Charles	25	45,000	45-55	43	6,666 ^c
07	Aransas	St. Charles	25	102,000	30-35	32	
26	Galveston	Galveston	451	10,714	57-72	66	
27	Aransas	St. Charles	25	9,100	57-72	66	
Sep 02	Aransas	St. Charles	25	9,300	35-75	58	
23	East Matagorda	East Matagorda	98	32,000	38-44	41	
24	Galveston	West	618	12,000	35-45	40	
25	Galveston	West	718	8,000	45-55	48	
26	Galveston	West	718	5,800	45-55	50	
May 11 1981	Aransas	St. Charles	25	577,500	25-32		
Oct 21 1982	Aransas	St. Charles	25	280,000	25-28	27	
May 17 1983	San Antonio	Espiritu Santo	211	306,019	16-32		
18	San Antonio	Espiritu Santo	76	392,626	16-32		
19	San Antonio	Espiritu Santo	211	373,487	20-33		
24	San Antonio	Espiritu Santo	211	283,926	19-29		
25	San Antonio	Espiritu Santo	211	179,785	19-29		

Table A.4. (Cont'd.).

Date	Bay system	Minor Bay	Grid	No.	Total length (mm)		No. tagged
					Range	Mean	
May 26 1983	San Antonio	Espiritu Santo	87	286,901	20-33		
27	San Antonio	Espiritu Santo	211	496,321	18-33		
Sep 07	Corpus Christi	Nueces	16	320,224	29-55		
08	Corpus Christi	Nueces	20	131,059	44-52		
09	Corpus Christi	Nueces	16	354,762	19-51		
10	Corpus Christi	Nueces	20	410,827	19-51		
11	Corpus Christi	Nueces	16	353,202	19-34		
12	Corpus Christi	Nueces	20	73,030	19-83		
13	Corpus Christi	Nueces	20	204,527	19-76		
Nov 09	Corpus Christi	Nueces	20	717,112	28-32		
10	Corpus Christi	Nueces	16	94,056	29-34		
12	Corpus Christi	Nueces	11	292,500	19-29		
12	Corpus Christi	Nueces	27	527,716	25-34		
13	Corpus Christi	Nueces	16	359,200	30-32		
14	Corpus Christi	Nueces	20	536,153	25-28		
16	Corpus Christi	Nueces	20	339,008	19-25		
May 08 1984	San Antonio	Espiritu Santo	87	37,000	25-38		
15	Upper Laguna Madre	Upper Laguna Madre	33	532,276	38-44	31	
15	San Antonio	Espiritu Santo	211	258,817	25-34	29	
16	San Antonio	Espiritu Santo	224	181,510	25-37	30	
17	San Antonio	Espiritu Santo	217	295,556	25-32	28	
18	San Antonio	Espiritu Santo	247	87,000	25-34	29	
19	San Antonio	Espiritu Santo	211	352,000	19-32	24	
20	San Antonio	Espiritu Santo	211	441,105	25-34	29	
22	San Antonio	Espiritu Santo	211	393,056	25-37	30	
23	San Antonio	Espiritu Santo	211	285,000	25-38	32	
24	San Antonio	Espiritu Santo	211	331,861		25	
Jul 03	San Antonio	Espiritu Santo	223	288,590	32-40	36	
04	San Antonio	Espiritu Santo	226	179,000	36-45	40	
05	San Antonio	Espiritu Santo	237	519,162	25-34	30	
06	San Antonio	Espiritu Santo	226	402,334	29-35	32	

Table A.4. (Cont'd.).

Date	Bay system	Minor Bay	Grid	No.	Total length (mm)		No. tagged
					Range	Mean	
Jul 07 1984	San Antonio	Espiritu Santo	212	208,175	28-38	33	
08	San Antonio	Espiritu Santo	212	307,365	26-38	32	
10	San Antonio	Espiritu Santo	212	451,901	27-38	33	
12	San Antonio	Espiritu Santo	226	420,566	26-35	30	
13	San Antonio	Espiritu Santo	212	538,942	19-25	22	
14	Lower Laguna Madre	Lower Laguna Madre	87	610,055	11-25	17	
Nov 17	Matagorda	Matagorda	154	287		203	
Jan 07 1985	Corpus Christi	Nueces	20	167,052		31	
08	Corpus Christi	Nueces	20	92,724		27	
May 13	Aransas	Aransas	219	1,825	121-159		
15	Galveston	West	665	464,430	28-34		
16	Galveston	West	620	223,657	28-32		
19	San Antonio	Espiritu Santo	212	137,451	19-39		
20	San Antonio	Espiritu Santo	212	544,546		28	
21	San Antonio	Espiritu Santo	212	422,715	32-34		
22	San Antonio	Espiritu Santo	212	274,784	32-36		
23	San Antonio	Espiritu Santo	212	203,721	32-38		
Jul 08	San Antonio	Espiritu Santo	227	324,683	33-43		
09	San Antonio	Espiritu Santo	212	301,351	32-39		
10	San Antonio	Espiritu Santo	227	262,900	19-38		
11	San Antonio	Espiritu Santo	268	165,175	33-38		
12	San Antonio	Espiritu Santo	212	185,912	32-39		
13	San Antonio	Espiritu Santo	216	283,993	18-51		
14	San Antonio	Espiritu Santo	213	359,955	33-43		
15	San Antonio	Espiritu Santo	252	417,456	18-51		
16	San Antonio	Espiritu Santo	216	345,699	25-38		
17	San Antonio	Espiritu Santo	212	302,511		38	
Oct 08	Lower Laguna Madre	Lower Laguna Madre	268	126,540		38	
08	Aransas	Redfish	328	156,186		25	
09	Aransas	Redfish	328	162,068		25	

Table A.4. (Cont'd.).

Date	Bay system	Minor Bay	Grid	No.	Total length (mm)		No. tagged
					Range	Mean	
Oct 19 1985	Lower Laguna Madre	Lower Laguna Madre	268	673,940		25	
20	Lower Laguna Madre	Lower Laguna Madre	268	437,419		25	
29	Aransas	Redfish	328	102,686		30	
Nov 07	Corpus Christi	Nueces	37	603,622	15-33	26	
12	Galveston	Christmas	718	936,923	18-30		
Dec 10	Corpus Christi	Nueces	37	259,270		29	
May 07 1986	Upper Laguna Madre	Upper Laguna Madre	78	511,805		21	
08	Upper Laguna Madre	Upper Laguna Madre	110	588,966		32	
09	Lower Laguna Madre	Lower Laguna Madre	268	301,522		29	
10	Lower Laguna Madre	Lower Laguna Madre	345	536,155	27-31	28	
11	Lower Laguna Madre	Lower Laguna Madre	307	262,152		33	
12	East Matagorda	East Matagorda	98	339,749	27-34		
19	Galveston	Galveston	618	625,628	27-32	30	
20	Galveston	Galveston	618	419,152	28-33	30	
21	Sabine Lake	Sabine Lake	248	226,061	19-30	26	
22	Sabine Lake	Sabine Lake	248	346,725	22-27	24	
28	Galveston	Christmas	618	400,754	26-31		
28	Matagorda	West Matagorda	209	788,366	26-31		
29	Galveston	Cow Trap Lakes	66	67,286	20-25		
29	Matagorda	Carancahua	22	368,333	20-25		
Jul 29	Galveston	Christmas		225,780		26	
30	Galveston	Christmas		206,956		38	
30	Galveston	Cow Trap Lakes	66	145,800		38	
31	Matagorda	Keller	145	162,830	27-53	40	
Nov 19	East Matagorda	East Matagorda	98		159-305	241	683 ^d

Table A.4. (Cont'd.).

Date	Bay system	Minor Bay	Grid	No.	Total length (mm)		No. tagged
					Range	Mean	
May 14 1987	Lower Laguna Madre	Lower Laguna Madre	348	220,165	19-38	33	
14	Lower Laguna Madre	Lower Laguna Madre	348	220,175	22-38	33	
15	Lower Laguna Madre	Lower Laguna Madre	348	283,372	31-42	34	
18	Lower Laguna Madre	Lower Laguna Madre	348	181,884	28-43	36	
20	San Antonio	San Antonio	165	502,230	25-33	30	
24	San Antonio	San Antonio	165	291,430	25-33	30	
24	Lower Laguna Madre	Lower Laguna Madre	348	144,423	25-33	28	
Jun 11	Galveston	Christmas	717	578,309	23-38	28	
17	Matagorda	Matagorda	153	132,000	17-30	25	
23	Galveston	Christmas	717	237,732	15-28	20	
Jul 09	Matagorda	Carancahua	151	125,759	20-39	29	
11	Matagorda	Carancahua	151	289,809	15-45	25	
14	Matagorda	Carancahua	151	248,733	24-39	29	
15	Matagorda	Matagorda	153	2,300	35-73	52	
18	Matagorda	Carancahua	151	127,880	15-45	25	
24	Matagorda	Carancahua	151	69,768	32-36	34	
31	Matagorda	Powderhorn Lake	413	201,487	16-59	25	
Aug 01	East Matagorda	East Matagorda	98	62,102	20-46	30	
14	Galveston	Christmas	717	66,110	18-44	35	
Nov 09	East Matagorda	East Matagorda	98	422	150-250	200	422 ^d
11	Upper Laguna Madre	Upper Laguna Madre	33	250,000	-		6
18	East Matagorda	East Matagorda	98	188,152	17-25	21	
25	Galveston	Moses Lake	451	547,216	-		30
27	Galveston	Jones Lake	539	419,663	-		25
Dec 03	Corpus Christi	Corpus Christi	207	63,377	12-25	19	
04	Corpus Christi	Corpus Christi	207	185,017	15-24	19	
10	Corpus Christi	Corpus Christi	207	57,059	14-20	16	

Table A.4. (Cont'd.).

Date	Bay system	Minor Bay	Grid	No.	Total length (mm)		No. tagged
					Range	Mean	
Dec 10 1987	Sabine Lake	Clam Lake	230	309,294	14-20	16	
14	Corpus Christi	Corpus Christi	110	182,117	14-28	21	
Mar 17 1988	Upper Laguna Madre	Upper Laguna Madre	12	4,700		25	
Apr 30	Aransas	Redfish	285	702,050	20-25	22	
May 03	Matagorda	Matagorda	153	60		76	
16	Aransas	Aransas	280	187,980		25	
18	Aransas	Aransas	306	137,998		25	
20	Aransas	Aransas	285	236,059		25	
21	Aransas	Aransas	122	20,310		25	
24	Aransas	Aransas	241	27,062		25	
25	Aransas	Aransas	225	21,000		25	
26	Aransas	Carlos	127	544,416		25	
26	Galveston	Christmas	718	288,258	20-25	22	
27	Galveston	Chocolate	607	239,315	20-27	22	
27	Galveston	Swan Lake	511	288,505	20-27	25	
Jun 02	Galveston	Salt Lake	714	169,174	22-39	35	
03	Galveston	Tabbs	35	240,856	16-33	19	
03	Galveston	Dollar	454	314,562	16-33	19	
08	Matagorda	Matagorda	153	114,400		25	
Jul 19	Galveston	Tabbs	35	31,272	20-42	33	
26	Galveston	West	201	518,334	21-43	33	
Aug 09	Sabine Lake	Clam Lake	230	393,076		22	
26	Sabine Lake	Clam Lake	248	152,628		31	
26	Galveston	Cow Trap	65	47,000	30-40	38	
26	Galveston	Cow Trap	65	87,216	30-35	32	
27	Galveston	Cow Trap	65	136,000		38	
Aug 27 1988	Lower Laguna Madre	Lower Laguna Madre	345	421,756		38	
Sep 09	Lower Laguna Madre	Lower Laguna Madre	31	501,780		30	
23	Lower Laguna Madre	Lower Laguna Madre	31	171,903			

Table A.4. (Cont'd.).

Date	Bay system	Minor Bay	Grid	No.	Total length (mm)		No. tagged
					Range	Mean	
Oct 14	Matagorda	Matagorda	153	20	439-536	476	20
20	Matagorda	Matagorda	153	2,425	70-164	130	
20	Matagorda	Matagorda	153	3,277	83-152	130	
21	Matagorda	Matagorda	153	2,211	89-165	125	
Nov 04	Lower Laguna Madre	Lower Laguna Madre	230	411,390		25	
10	Lower Laguna Madre	Lower Laguna Madre	282	126,178		23	
10	Upper Laguna Madre	Upper Laguna Madre	12	202,125		23	
13	Upper Laguna Madre	Upper Laguna Madre	78	365,508		25	
14	Upper Laguna Madre	Upper Laguna Madre	33	261,379		25	
18	Upper Laguna Madre	Upper Laguna Madre	78	58,398		31	
Nov 29	Upper Laguna Madre	Upper Laguna Madre	12	228,000		25	
Dec 02	Upper Laguna Madre	Upper Laguna Madre	12	110,162		19	
04	Upper Laguna Madre	Upper Laguna Madre	12	12,502		22	
07	Upper Laguna Madre	Upper Laguna Madre	12	31,400			
May 18 1989	East Matagorda	East Matagorda	51	353,649	19-35	21	
22	East Matagorda	East Matagorda	51	422,833	17-38	33	
24	Aransas	Port	272	432,092	21-32	30	
25	East Matagorda	East Matagorda	51	243,121	18-30	24	
27	Aransas	St. Charles	97	106,562	29-46	40	
Jun 02	San Antonio	San Antonio	165	10,673	19-40	32	
09	San Antonio	Hynes	39	223,866	19-26	22	
11	San Antonio	Hynes	39	262,800	18-27	24	
20	Upper Laguna Madre	Upper Laguna Madre	12	2,500	25-30	28	

Table A.4. (Cont'd.).

Date	Bay system	Minor Bay	Grid	No.	Total length (mm)		No. tagged
					Range	Mean	
Jun 21 1989	San Antonio	San Antonio	57	506,359	15-38	21	
23	Upper Laguna Madre	Upper Laguna Madre	12	150,552	12-30	23	
28	Galveston	West	665	442,323	14-33	22	
30	Corpus Christi	Corpus Christi	91	186,490	13-26	17	
30	Corpus Christi	Corpus Christi	110	306,957	14-37	24	
Jul 08	Corpus Christi	Nueces	27	280,568	15-33	25	
11	Corpus Christi	Corpus Christi	204	203,886	15-26	20	
15	Matagorda	Powderhorn Lake	413	55,038	24-32	28	
17	Matagorda	Turtle	71	394,704	24-35	31	
22	Matagorda	Keller	145	140,406	15-34	24	
26	Matagorda	Powderhorn Lake	413	642,710	19-30	23	
29	Upper Laguna Madre	Upper Laguna Madre	12	40,000	12-26	19	
Aug 08	Upper Laguna Madre	Upper Laguna Madre	12	26,263	17-32	19	
23	Matagorda	Powderhorn Lake	413	102,023	25-30	26	
24	Matagorda	Lavaca	60	177,665	21-28	24	
25	Matagorda	Chocolate	292	28,030	12-27	20	
30	Upper Laguna Madre	Upper Laguna Madre	12	6,684	21-29	25	
Oct 20	Galveston	Galveston	125	88,517	20-34	28	
27	Matagorda	Carancahua	36	268,625	13-26	21	
31	Aransas	St. Charles	97	24,828	17-21	18	
Nov 03	Aransas	Copano	234	98,381	22-34	28	
07	Aransas	St. Charles	97	256,199	15-27	20	
14	Galveston	Galveston	146	236,130	19-30	23	
16	Aransas	Port	271	86,306	16-29	20	
16	Aransas	Aransas	309	25,000	16-29	20	
17	Galveston	Galveston	188	162,645	15-25	20	

Table A.4. (Cont'd.).

Date	Bay system	Minor Bay	Grid	No.	Total length (mm)		No. tagged
					Range	Mean	
May 11	Upper Laguna Madre	Upper Laguna Madre	21	795,901	9-30	14	
11	Upper Laguna Madre	Upper Laguna Madre	21	99,039	12-21	15	
15	Upper Laguna Madre	Upper Laguna Madre	1	122,633	12-38	26	
16	Upper Laguna Madre	Upper Laguna Madre	1	202,416	21-37	28	
17	Upper Laguna Madre	Upper Laguna Madre	1	192,180	19-39	31	
17	Upper Laguna Madre	Upper Laguna Madre	78	440,899	14-25	19	
19	Upper Laguna Madre	Cayo Del Grullo	141	472,661	17-27	20	
20	Aransas	St. Charles	97	280,338	24-31	27	
20	Aransas	St. Charles	97	306,253	24-31	27	
22	Aransas	Port	247	451,714	18-31	26	
23	Matagorda	West Matagorda	478	275,174	12-31	24	
24	Matagorda	West Matagorda	470	365,050	20-38	28	
24	Matagorda	West Matagorda	470	328,377	20-38	20	
25	Matagorda	Lavaca	136	568,083	14-26	17	
25	Matagorda	Lavaca	136	173,667	21-33	25	
25	Matagorda	Lavaca	136	207,058	21-39	25	
26	Matagorda	Lavaca	109	438,871	16-32	25	
26	Matagorda	Carancahua	151	69,627	26-55	38	
26	Matagorda	Carancahua	151	136,393	26-55	38	
29	Matagorda	Lavaca	136	90,767	31-45	37	
29	Matagorda	Lavaca	136	103,617	35-45	38	
30	Matagorda	Lavaca	136	11,261	28-40	35	
Jun 01	Matagorda	Powder Horn Lake	413	205,587	19-37	27	
01	East Matagorda	East Matagorda	98	166,386	30-41	34	
05	East Matagorda	East Matagorda	90	245,013	16-21	20	
19	East Matagorda	East Matagorda	90	244,199	12-29	19	
20	San Antonio	Espirito Santo	219	38,202	22-33	29	
28	San Antonio	San Antonio	246	396,263	15-31	22	
28	San Antonio	San Antonio	246	114,508	15-31	22	

Table A.4. (Cont'd.).

Date	Bay system	Minor Bay	Grid	No.	Total length (mm)		No. tagged
					Range	Mean	
Jun 29	San Antonio	San Antonio	57	80,977	9-23	16	
29	San Antonio	San Antonio	57	416,195	9-23	16	
Jul 02	San Antonio	San Antonio	165	270,010	17-28	21	
02	Aransas	Copano	64	305,923	17-28	21	
03	Aransas	Copano	64	486,873	15-22	18	
04	Lower Laguna Madre	Lower Laguna Madre	31	270,605	16-21	18	
06	Lower Laguna Madre	Lower Laguna Madre	300	84,731	15-24	18	
11	Lower Laguna Madre	Lower Laguna Madre	80	65,000	14-30	23	
12	Lower Laguna Madre	Lower Laguna Madre	80	300,000	15-25	21	
19	Lower Laguna Madre	Lower Laguna Madre	275	260,000	12-22	16	
Sep 10	Galveston	Galveston	316	24,414	19-31	28	
11	Galveston	East Bay	228	510,900	16-22	20	
Oct 22	Galveston	Jones Lake	539	542,409	16-26	20	
26	Galveston	Jones Lake	539	897,000	14-18	16	
26	Galveston	Jones Lake	539	486,966	14-18	16	
Oct 31	Lower Laguna Madre	Lower Laguna Madre	300	603,110	18-25	21	
31	Lower Laguna Madre	Lower Laguna Madre	300	603,110	18-25	21	
31	Lower Laguna Madre	Lower Laguna Madre	300	590,378	18-25	21	
Nov 02	Sabine Lake	Keith Lake	179	277,820	13-22	18	
07	Corpus Christi	Nueces	21	55,988	17-22	20	

^aMonel jaw tags^bPlastic streamers^cMagnetic tags inserted in nose^dInternal anchor

Table A.5. Date, location, and number of spotted seatrout fry (1-3 days old) stocked into Texas bays by the TPWD.

Date	Bay system	Grid	No.
Jun 23 1984	Matagorda	154	41,000
May 19 1985	Matagorda	154	633,000
27	Matagorda	154	30,600
Jul 27	Matagorda	154	2,100
Jun 01 1986	Matagorda	153	9,000
Jun 29 1987	Matagorda	153	10,000
Jul 27	Matagorda	153	315,000
Apr 01 1988	Matagorda	153	339,000
05	Matagorda	153	149,000
10	Matagorda	153	26,160
13	Matagorda	153	74,000
24	Matagorda	153	8,000
26	Matagorda	153	34,020
28	Matagorda	153	1,200
30	Matagorda	153	77,700
May 01	Matagorda	153	4,800
05	Matagorda	236	16,560
07	Matagorda	236	12,240
Jun 03	Matagorda	41	207,000
07	Matagorda	236	141,000
10	Matagorda	236	254,000
15	Matagorda	236	36,000
17	Matagorda	236	128,000
24	Matagorda	153	202,000
27	Matagorda	236	231,000
29	Matagorda	236	18,000
Jul 11	Matagorda	236	917,000
12	Matagorda	236	541,000
13	Matagorda	236	210,000
15	Matagorda	236	100,000
19	Matagorda	236	524,000
21	Matagorda	236	83,000
22	Matagorda	236	286,000
26	Matagorda	236	147,000
28	Matagorda	236	588,000
29	Matagorda	236	2,487,000
Aug 01	Matagorda	236	460,000
03	Matagorda	236	142,000
05	Matagorda	236	105,000
10	Matagorda	236	1,507,800
12	Matagorda	236	793,800
15	Matagorda	236	31,680
25	Matagorda	236	406,980
26	Matagorda	236	124,000
29	Matagorda	236	96,600
31	Matagorda	236	88,200

Table A.5. (Continued)

Date	Bay system	Grid	No.
Sep 01	Matagorda	236	106,260
05	Matagorda	236	93,800
22	Matagorda	236	312,200
23	Matagorda	236	474,600
27	Matagorda	236	344,400
29	Matagorda	236	214,200
Oct 03	Matagorda	236	304,500
05	Matagorda	236	283,500
19	Matagorda	236	168,000
Jul 10 1989	Matagorda	153	60,000
Aug 11	East Matagorda	71	10,000

Table A.6. Date, location, and number of spotted seatrout fingerlings stocked into Texas bays by the TPWD. Blanks indicate no data.

Date	Bay system	Minor Bay	Grid	No.	Total length (mm)	
					Range	Mean
Aug 01 1983	Matagorda	Matagorda	154	50,000	34-41	39
Aug 09 1984	Upper Laguna Madre	Upper Laguna Madre	75	4,438		
Nov 08 1984	Matagorda	Matagorda	154	1,609	35-45	28
Jun 08 1985	Matagorda	Matagorda	154	65,914	22-34	28
16	Matagorda	Matagorda	154	88,114	22-34	27
18	Matagorda	Matagorda	154	17,000	35-45	41
25	Matagorda	Matagorda	154	45,800	30-43	35
26	Matagorda	Matagorda	154	11,272	40-57	47
Aug 21	Matagorda	Matagorda	154	21,388	33-49	43
Jun 24 1986	Matagorda	Turtle	71	89,000	20-43	32
Jul 31	Matagorda	Turtle	71	143,000	23-33	28
Sep 05	Galveston ^a	Cow Trap	66	42,073		
Jun 29 1987	Matagorda	Matagorda	153	98,573	27-48	36
Jun 07 1988	Matagorda	Matagorda	236	98,000	20-25	21
Jul 13	Matagorda	Matagorda	236	110,000	19-26	22
26	Matagorda	Matagorda	236	5,853	18-26	23
Aug 05	Matagorda	Matagorda	236	13,850	14-39	20
Aug 25 1989	East Matagorda	East Matagorda	98	4,313	28-31	30
Sep 26 1990	Upper Laguna Madre	Upper Laguna Madre	78	22,756	44-50	47
Oct 15	Upper Laguna Madre	Upper Laguna Madre	78	12,131	26-31	27

^aCedar Lakes (Freeport) area.

Table A.7. Date, location, and number of striped bass fry (3-10 d old) stocked into Texas bays by the TPWD.

Date	Bay system	Minor Bay	Grid	No.
May 04 1983	Galveston	Trinity	62	200,000
09	Galveston	Trinity	123	630,000
Apr 30 1984	Galveston	Trinity	123	800,000
May 03	Galveston	Trinity	123	400,000
14	Galveston	Trinity	123	15,000
Apr 15 1985	Galveston	Trinity	123	800,000
Apr 28	Galveston	Trinity	123	400,000
29	Galveston	Trinity	123	312,500
Apr 15 1986	Galveston	Trinity	123	2,578,241
17	Galveston	Trinity	123	1,317,936
22	Galveston	Trinity	123	896,062
Apr 24 1987	Galveston	Trinity	34	874,348
May 01	Galveston	Trinity	34	551,700
02	Galveston	Trinity	34	1,646,037
03	Galveston	Trinity	34	1,572,000
Apr 21 1988	Galveston	Trinity	34	1,603,950
29	Galveston	Trinity	34	2,100,450
30	Galveston	Trinity	34	760,000
Apr 19 1989	Galveston	Trinity	22	5,049,000

Table A.8. Date, location, and number of striped bass fingerlings stocked into Texas bays by the TPWD. Blanks indicate no data.

Date	Bay system	Minor Bay	Grid	No.	Total length (mm)		No. Tagged
					Range	Mean	
Jun 30 1975	San Antonio	San Antonio	105	55,645		41	
May 20 1976	San Antonio	San Antonio	3	9,910		43	
20	San Antonio	Guadalupe River	3	24,705		43	
20	San Antonio	Guadalupe River	3	69,270		38	
24	San Antonio	Guadalupe River	8	16,934		38	
26	San Antonio	Mustang Lake	151	19,934		36	
May 05 1977	Corpus Christi	Sunset Lake	68	2,970	19-38	34	
05	San Antonio	San Antonio	105	32,400	19-38	34	
10	San Antonio	San Antonio	105	29,502	19-38	34	
10	Sabine Lake	Sabine Lake	113	9,950	19-38	34	
11	San Antonio	San Antonio	105	102,240	19-38	34	
12	San Antonio	San Antonio	105	57,692	19-38	34	
May 25 1983	Matagorda	Swan Lake	18	23,500	23-42	34	
Apr 24 1984	Matagorda	Swan Lake	18	4 ^a	790-915	847	
May 20 1986	Galveston	Trinity	34	62,410			
22	Galveston	Trinity	34	38,000			
Jun 04	Galveston	Trinity	34	70,672			
Apr 02 1987	Galveston at Hwy 90	Trinity River	^b	2,666	203-356	254	2,666 ^a
Dec 14	Galveston at Hwy 90	Trinity River	^b	4,181	101-445	201	4,181 ^a
Jun 06 1988	Galveston	Trinity	22	174,530			174,530 ^c
09	Galveston	Trinity	22	138,354	19-32		138,354 ^c
Aug 04	Galveston	Brazos River	37	570	51-254		570 ^d

Table A.8. (Cont'd.)

Date	Bay system	Minor Bay	Grid	No.	Total length (mm)		No. Tagged
					Range	Mean	
May 17 1989	Galveston	Trinity	22	177,620	25-32	25	
19	Galveston	Trinity	22	123,185	20-40	25	
22	Galveston	Trinity	22	33,885	25-50		
Jun 06 1990	Sabine Lake	Sabine Lake	32	135,600	15-40	27	135,600 ^c
06	Galveston	Trinity	22	131,756	15-40	25	6,000 ^c
07	Galveston	Trinity	22	11,316		50	5,300 ^c
Jul 06	Galveston	Trinity	22	53,564	32-57	51	53,564 ^c
Aug 01	Sabine Lake	Sabine Lake	21	5,644	72-117	88	5,644 ^b

^aInternal abdominal tags with external streamer.

^bNo grid number available.

^cFish immersed in tetracycline.

^d408 fish tagged with internal abdominal tags; 162 fish immersed in tetracycline.

^eFish tagged with coded wire tag in cheek.

PWD-RP-3400-258C-2/91

Dispersal of this publication conforms with Texas State Documents Depository Law, and it is available at Texas State Publications Clearinghouse and Texas Depository Libraries.