

**HETAG Newsletter No. 34, June 2019**



**The Witte Museum, San Antonio**

**On view thru August 25, 2019**

**The biggest news about Earlier Houston Art, or indeed about early Texas art from anywhere in the state, is coming out of San Antonio this summer, where *The Art of Texas: 250 Years* is on view at The Witte Museum. This is the really big show of Texas for our generation, featuring 180 works by almost as many Texas artists, made over 250 years of Texas history, and gathered from public and private collections around the state and country. It's not to be missed by anyone interested in the art of Texas. No matter how much you know or have seen already, you'll see and learn things about our art that are new to you. Houston is very well represented by some of the finest work created by more than a dozen of our finest artists from the past. The accompanying book is also a must-have for all Texas art history libraries.**



**Paintings in the exhibition by Houston artists  
Ruth Pershing Uhler, Frederic Browne and Ola McNeill Davidson.**

## HETAG: The Houston Earlier Texas Art Group

---

UPDATE: This is our next HETAG Meeting, and thanks to the generosity of HETAGers, it is already COMPLETELY FULL. Sorry if you can't join us, but you can still send your donation to The Heritage Society at the address below.

### HETAG HELPS HERITAGE Fundraiser

Sunday, June 23, 2019 1-4 pm

Home of Randy Tibbits and Rick Bebermeyer

\$100 per person – with the hope of raising \$2000 for Heritage Society!

As you may know, The Heritage Society has been one of the most consistently supportive Houston organizations in providing an exhibition venue for Earlier Houston Art.

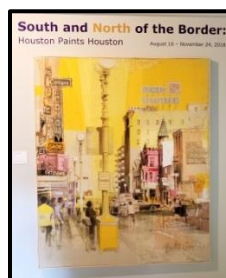
Over the decades, THS has welcomed many exhibitions with HETAG as a partner, giving Houstonians an opportunity to see our own art from the past. THS has devoted considerable resources to these exhibitions – money, exhibition space, staff time – and their total investment has been substantial. Many thanks to THS.

But now, thanks are not enough. It's time for HETAG to do more. Perhaps you've read or heard that THS is experiencing severe financial difficulties – so severe that the very existence of the organization is in question.

Please join us at our house to help Heritage. Over the years you've seen many of the paintings on our walls in exhibitions at The Heritage Society. Now come see them where they live, and see the ones that haven't made it to the exhibitions.

Come with a \$100 check per person, made out to The Heritage Society. Enjoy a light lunch, some libations and the good feeling that you are joining other HETAGers to help our friend in need at this difficult time. Ordinarily, Rick and I would never charge to see the Houston art we hold in trust, but this is an extraordinary crisis for The Heritage Society and for all of Houston.

RSVP to [tibbits@rice.edu](mailto:tibbits@rice.edu) Limit 20, but if more of you want to support THS, we'll arrange a second event. And if you can't attend, you can still send THS a check to 1100 Bagby Street | Houston, Texas 77002, Attn: Alison Bell! They were there when we needed them; let's be there for THS now!

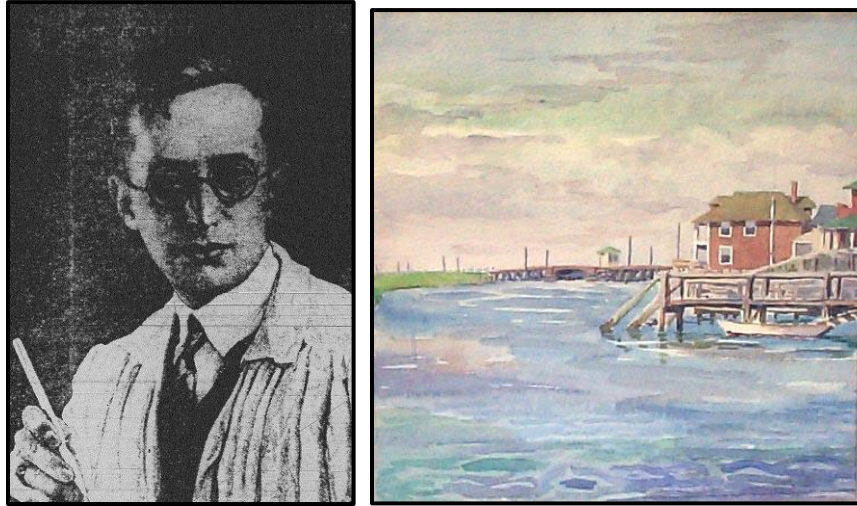


*Houston Art From Houston Collections, 2004; This WAS Contemporary Art 2016; South and North of the Border: Houston Paints Houston 2018.*

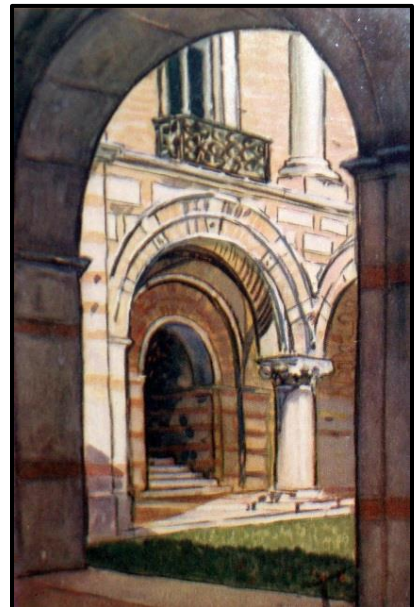
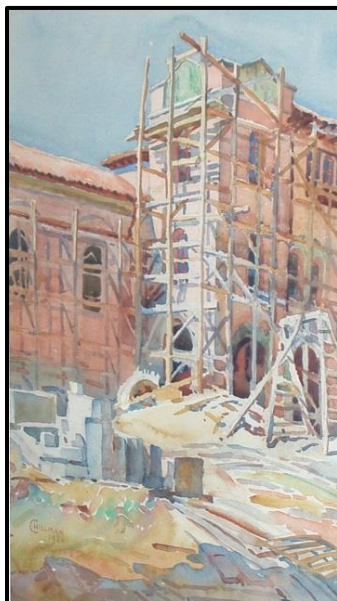
## HETAG: The Houston Earlier Texas Art Group

---

### Houston Art History Notes: James Chillman, Jr., watercolorist, 1910s/20s



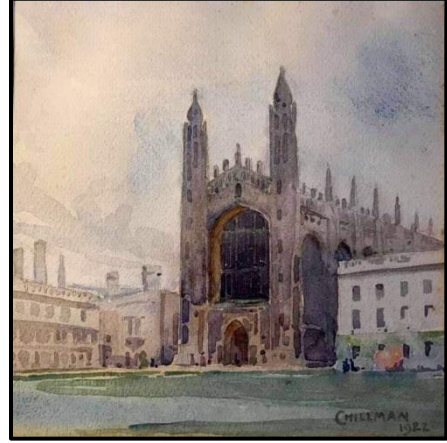
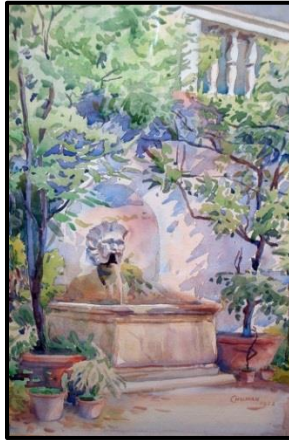
James Chillman, Jr. (1891-1972) was the founding director of the Museum of Fine Arts, Houston. He came to the city from Philadelphia in 1916 to teach drawing and watercolor rendering in the Architecture School at Rice University. Both were essential skills for architects at the time. Chillman, shown here in a 1926 newspaper photo, was an accomplished watercolorist, though he stopped painting by the late 1920s as his administrative and teaching duties increased. On the right is his view of Ocean City, New Jersey, from 1915, just before he came to Houston. And below are three early views of the Rice University campus.



## HETAG: The Houston Earlier Texas Art Group

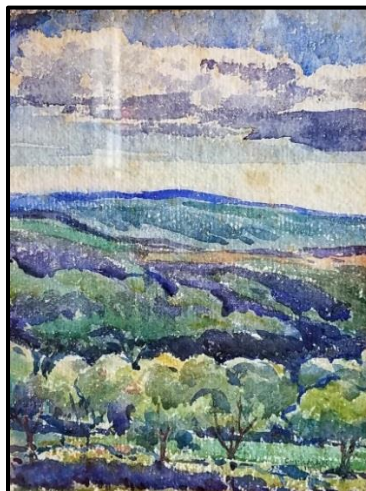
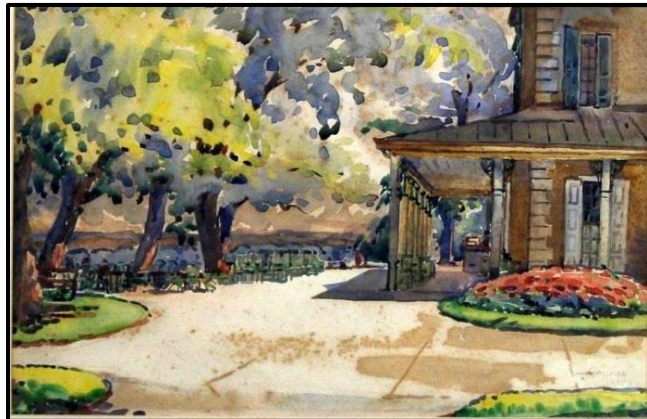
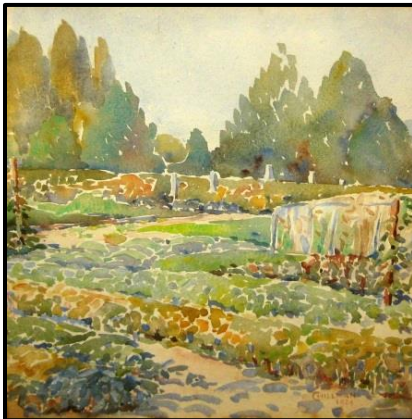
---

In 1919 Chillman received a Furnham Fellowship in Architecture at the [American Academy in Rome](#). He spent three years studying in Europe. Below are three of his European pieces.



With the founding of MFAH in the mid-1920s, he divided his time fifty-fifty between the Museum and the University, an arrangement that continued until 1953, when Lee Malone was appointed the first full time director of MFAH.

And finally, three of his later works, including one that may be a view of the Texas Hill Country.



## HETAG: The Houston Earlier Texas Art Group

---



If you weren't able to make it to Austin in March for the 17<sup>th</sup> Annual Casetta Symposium and Texas Art Fair, you missed the most fun-filled Early Texas Art weekend of the year. But you don't have to miss out on all the great presentations, including sessions with legendary Texas artists Roger Winter and James Surls, as well as presentations by Texas scholars, curators and collectors, on a fascinating range of topics. The videos of all 2019 sessions are already online at the Casetta website (along with those from all years going back to 2014).

Go to the [Casetta website Symposium Videos tab](#).

And make your plans now to attend the 18<sup>th</sup> Annual Symposium, next spring in Houston!



Dick Rembrandt [Houston Skyline] 1960s.

The mission of HETAG is to illuminate Houston's art history by providing viewing opportunities for art, by supporting and doing research on the artists and art communities working in Houston through the years, and by spreading the word.

Back issues of the HETAG Newsletter are available via the  
University of Houston Libraries Digital Library

Now including issues 1-31, March 2016 – March 2019

<https://digital.lib.uh.edu/collection/hetag>

Randy Tibbits, coordinator  
HETAG: The Houston Earlier  
Texas Art Group  
[tibbits@rice.edu](mailto:tibbits@rice.edu)