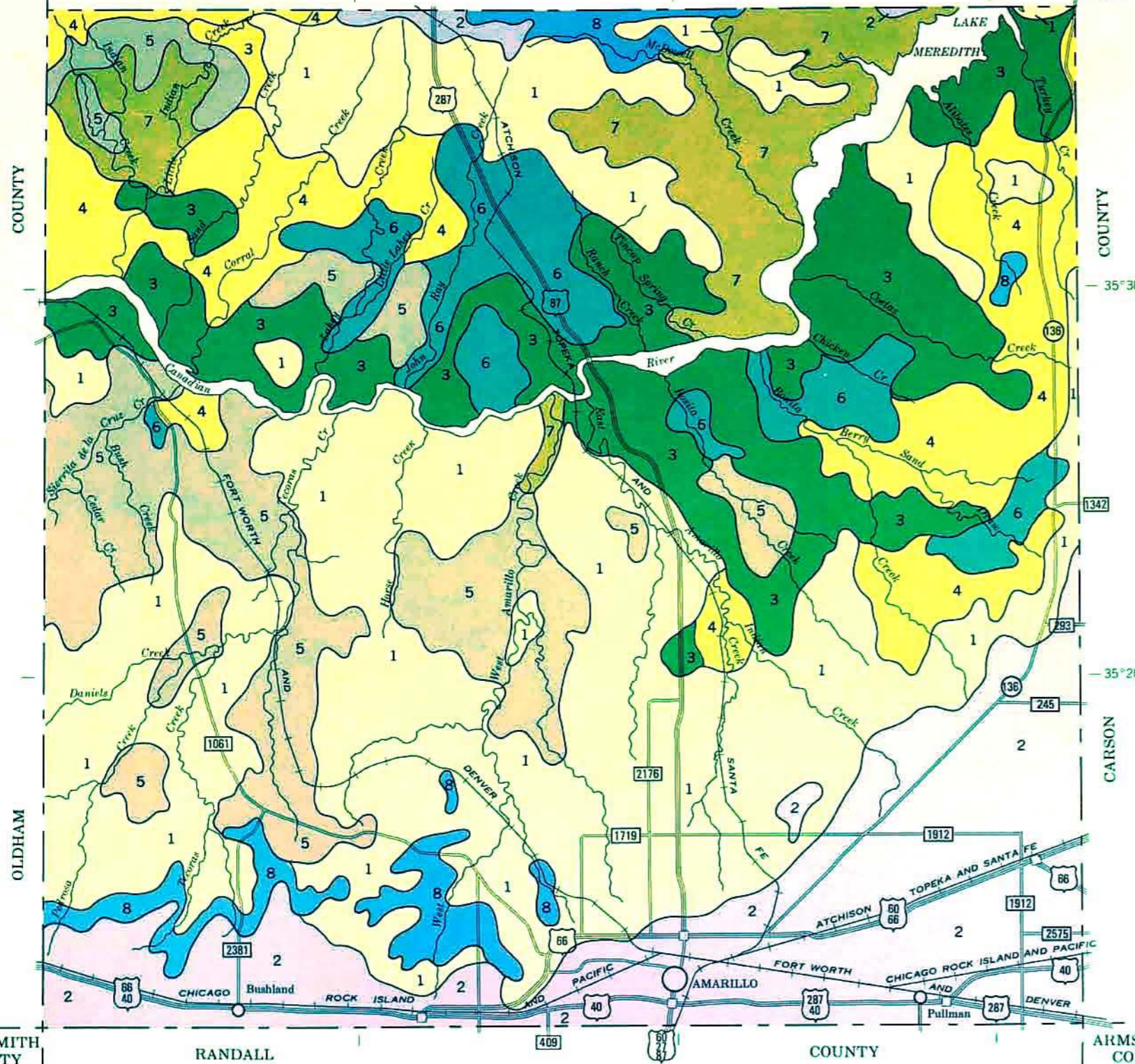


HARTLEY COUNTY MOORE COUNTY HUTCHINSON COUNTY
 102°00' 101°50' 101°40'



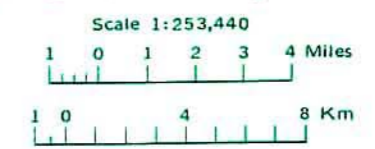
LEGEND 1/

- 1 ACUFF-PALODURO-OLTON: Nearly level to sloping, deep, noncalcareous and calcareous loamy soils
- 2 PULLMAN: Nearly level to gently sloping, deep, noncalcareous loamy soils
- 3 MOBEETIE-TASCOSA: Gently sloping to hilly, deep, calcareous loamy soils
- 4 VEAL-MOBEETIE: Gently sloping to rolling, deep, calcareous loamy soils
- 5 WEYMOUTH-VERNON: Undulating to rolling, moderately deep, calcareous loamy and clayey soils
- 6 LIKES-TIVOLI: Gently undulating to rolling hummocks and dunes of deep, calcareous and noncalcareous sandy soils
- 7 BURSON-QUINLAN-ASPERMONT: Undulating to steep, very shallow, shallow, and deep calcareous loamy soils
- 8 POTTER-MOBEETIE: Sloping to steep, very shallow, shallow and deep calcareous gravelly and loamy soils

1/ The texture noted in the descriptive heading refers to the surface layer of the major soils.

Compiled 1979

U. S. DEPARTMENT OF AGRICULTURE
 SOIL CONSERVATION SERVICE
 TEXAS AGRICULTURAL EXPERIMENT STATION
GENERAL SOIL MAP
 POTTER COUNTY, TEXAS



Each area outlined on this map consists of more than one kind of soil. The map is thus meant for general planning rather than a basis for decisions on the use of specific tracts.

