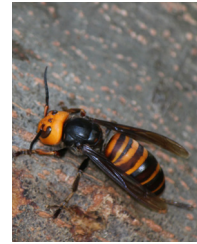




TX Agriculturalist
Helen Kleberg Groves, King Ranch heir, cattle-woman and horsewoman carries King legacy.



Colonia Fund
Assisting Texans along the Texas Mexico border. Grant applications are now open until Sept. 1



TDA Updates
Division updates from Food & Nutrition, GO TEXAN, and more.



TEXAS AGRICULTURE Matters!

Your monthly connection to the Texas Department of Agriculture.

Volume 1
Issue 7
July 2020



Howdy Neighbors!

Welcome to the Texas Agriculture Matters newsletter, your monthly connection to the Texas Department of Agriculture.

We are closely watching the COVID-19 pandemic. Staff members at TDA have transitioned to working remotely for the time being. Rest assured we are hard at work everyday to support farmers, ranchers and Texans with their agriculture endeavors.

Our operations will continue to serve you and we have plenty of opportunities available. Whether you're a young farmer, want to learn how to get a hemp license or need to read something that brings you joy, this newsletter will serve you well.

Remember friends, Texas Agriculture Matters!

Sid Miller

Texas Agriculture Commissioner

Texas Gulf Shrimp

Better by a nautical mile.

Did you know that July marks the start of something tasty? It is the official opening of the Texas commercial shrimp season.

Why July, you ask? Because the Lone Star State takes the unique step of closing its coastal waters between May and July each year to allow shrimp species to migrate from estuaries and bays into the Gulf of Mexico. This is done so that Gulf shrimp populations continue to grow and sustain themselves for generations to come.

The bottom line is this, Texas Gulf shrimp is simply delicious and highly coveted by consumers and professional chefs alike. Who can blame them? With miles of clean, sustainable Texas coastline framing the Gulf of Mexico, why would anyone buy, serve, or eat shrimp from anywhere else?



Gulf Shrimp contain no fat and are loaded with essential amino acids, making it good part of a healthy diet! They also have a impressive amount of protein and are only about 7 calories each. Next time you visit a restaurant, don't just ask for Texas Gulf shrimp, insist on it!

continued on pg 2

Texas shrimpers take pride in preserving coastal waters. They adhere to high conservation standards in order to protect the environment. In fact, Texas is

the only Gulf state that closes its coastal waters to allow shrimp to grow and repopulate. Texas shrimpers are responsible for approximately one-third of all

shrimp harvested from the Gulf of Mexico each year. It's a way of life that supports thousands of Texas jobs. Buying Texas Gulf shrimp and Lone Star products allows more of your money to remain in Texas, helping support local jobs and businesses.

The Texas Shrimp industry also plays a key role in restoring and protecting the Kemp's Ridley Sea Turtle's nesting grounds on the Gulf Coast. Shrimp boats are equipped with Turtle Exclusion Devices (TEDs) in their nets and Bycatch Reduction Devices (BRDs) in their nets to further protect marine life. 🇺🇸

TEXAS GULF SHRIMP VARIETIES

BROWN SHRIMP

WHITE SHRIMP

SHRIMP FUN FACTS

Brown shrimp grow up to 9" long, are nocturnal and live in deep waters. You can ID this species by the grooves on the head and last segment on its tail.

White shrimp are found in shallow waters. They can reach up to 8" long, and have a lighter, sweeter flavor. To ID this species, look at the shells - they should be smooth.

THE SHRIMP LIFE CYCLE

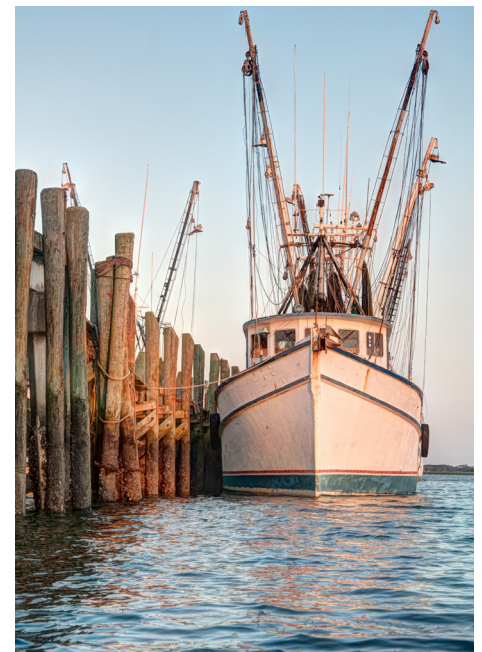
Diagram illustrating the shrimp life cycle in the Gulf of Mexico, showing stages from egg (a) to adult (h) and their habitats: Mainland, Secondary Bay, Primary Bay, and Island Bay, separated by a Barrier.

SHRIMP VS. PRAWN

SHELL: Shrimp shells typically overlap like fish scales. **SHRIMP VS. PRAWN** **SHELL:** Prawn shells overlap other segments on its body.

LEGS: Shrimp have 3 pairs of legs with pincers (chela). **LEGS:** Prawn have 5 pairs of legs with simple claws, not pincers.

EQUALLY DELICIOUS!



TEXAS AGRICULTURE Matters!

TEXAS DEPARTMENT OF AGRICULTURE
COMMISSIONER SID MILLER

Produced by the Office of Communications
Editor, Katlyn Gast

www.TexasAgriculture.gov
(800) TELL-TDA

ABOUT COMMISSIONER SID MILLER

Sid Miller is an eighth generation farmer and rancher and the 12th Commissioner of Agriculture for the great State of Texas. Commissioner Miller has devoted his life to the agriculture industry, and supporting Texas producers and the communities they call home. He is a businessman, rancher, community leader, former ag teacher and former school board member. Commissioner Miller is a rodeo cowboy and holds 12 world championship titles. He is an honors graduate of Tarleton State University in Stephenville, where he received a Bachelor of Science in Vocational Agriculture Education.

COVID-19

The Texas Department of Agriculture is committed to providing the same high level of service to our customers during the COVID-19 emergency as they've come to expect. Whether we're helping Texas farmers and ranchers continue to provide a safe and dependable food supply, ensuring Texas school children continue to have access to regular, healthy meals or supporting our vital rural hospitals and clinics, the Texas Department of Agriculture is here for Texans.

Due to the Coronavirus emergency, the Texas Department of Agriculture is now working remotely and will continue to do so until directed to return to state offices by agency leadership. As a result, we are asking all constituents, customers, licensees and others to contact TDA by email, as there will be limited staff in the office answering the phones. Additionally, TDA is not accepting external visitors in the office during this time. If you need to make a payment, you may do so online or via USPS.

Please visit our [website](#) for updated information or view our [COVID-19 Resource Guide](#) for additional resources and information.

ABOUT TDA

The Texas Legislature established the Texas Department of Agriculture (TDA) in 1907. The agency's key objectives are to promote production agriculture, consumer protection, economic development and healthy living. The agriculture commissioner oversees the agency and is elected every four years. The current commissioner, Sid Miller, was elected in 2014. TDA is a diversified state agency that provides value-added services through our regulatory and marketing and initiatives. TDA is headquartered in Austin and has five regional service offices, two sub-offices, three laboratories and five livestock export facilities.

Mission:

TDA's mission is to partner with all Texans to make Texas the nation's leader in agriculture, fortify our economy, empower rural communities, promote healthy lifestyles, and cultivate winning strategies for rural, suburban and urban Texas through exceptional service and the common threads of agriculture in our daily lives.

Texas Agriculture Profile



Helen Kleberg Groves

King Ranch heir and preserver of western heritage.

King Ranch spans across seven counties in Texas and is separated into four Divisions. In 1853, Captain Richard King bought land in the Wild Horse Desert of South Texas, thus became the King Ranch. The King Ranch would later be known for the introduction of Santa Gertrudis cattle, a Thoroughbred Triple Crown winner, Assault, and many other agricultural advances.

Today, the now 832,000-acre ranch is well known around the world for agribusiness and interests in cattle ranching, recreational hunting, farming (citrus, cotton, grain, etc.), luxury retail goods, and partners with Ford Motors. An heir to the King Ranch, Helen Kleberg Groves, has carried the legacy of quality horsemanship, stewardship and authenticity- true testaments to Captain King's integrity and commitment to the land.

Groves, daughter of Robert Kleberg Jr., was born in the late 1920s in San Antonio and grew up on the King Ranch. As part of the Kleberg County Centennial Celebration festivities in 2013, Groves recounted what life was like growing up at the King Ranch.

"It's very hard for people to understand (how life was back then)," she said, adding there was no telephone, no air conditioning, no

[*Helen Groves gives take on growing up on King Ranch, video by Richard Moore*](#)

radios, no TV, no airplanes and few roads. Only the railroad connected the area with the outside world."

Groves is well known in the equine industry, especially in breeding and racing Thoroughbreds and is a leading supporter of equine research. Over the years she has also acquired a polished reputation as the "First Lady of Cutting" because of her commitment to breeding star cutting horses, and making an appearance at every major show.

However, Groves is a cattlegirl at heart. The shareholder in the King Ranch family corporation also oversees three additional ranches that total over 30,000 acres. Her father introduced research programs that included efforts to eradicate cattle diseases like scours and Brucellosis. He also helped King Ranch pioneer advancements in cattle



© Kari Lanting

management such as dipping vats, cattle prods and deep wells for water.

Groves is the president and on the board of various family foundations and has been the director and president of numerous horse and cattle associations, including lifetime vice president of the Texas and Southwest Cattle Raisers Association. She is an avid quail hunter and resides in South Texas. 🇺🇸



COLONIA FUND - Construction

Assisting Texans along the Mexico border.

The Texas Community Development Block Grant (TxCDBG) Program assists small communities across Texas with a variety of grant programs to meet specific local needs. One priority, established through funding set aside by the Texas Legislature and the U.S. Department of Housing and Urban Development (HUD), is assistance for colonia areas.

Colonias are communities near the Texas-Mexico border that were established in 1990 or prior and lack basic infrastructure. Often, these communities were created using predatory development practices that have since been outlawed.

The TxCDBG program sets aside 10% of its annual funding to provide basic infrastructure and other improvements in colonia communities. Generally, applications for this program are only accepted in odd numbered years; however, TDA still has funds available after funding the eligible applications received in 2019, so a second application round is being offered for 2020.

This grant awards up to \$1 million for projects serving one or more colonia areas. There are requirements associated with this grant in addition to the regular TxCDBG requirements.

TDA is currently accepting applications until September 1, 2020. Visit our [website](#) for more information. 🇺🇸



Located just outside the border town of Mission is the Mi Sueno colonia. Shaghayegh Tajvidi/Al Jazeera



A boy rides a horse through Indian Hills East colonia near Alamo, Texas. Texas has more than 2,300 of these communities, known as colonias, that have sprung up around towns and provide shelter to impoverished families. Eric Gay/AP Photo

Livestock Export Facilities

The Texas Department of Agriculture Livestock Export Facilities are holding and inspection sites for livestock leaving the country. These export facilities help Texans and livestock owners in the U.S. develop their businesses in international markets. TDA has export facilities in Brownsville, Laredo, Del Rio, El Paso and Houston. After the livestock are inspected and import requirements are met, they are loaded for transport to Mexico and other destinations all over the world by land, air and sea.

Established at the request of the Mexican Government in 1960s, TDA's Livestock Exporting program provides communication with federal, state, local and Mexican governments to facilitate international trade. We assist in streamlining and the simplification of the livestock exporting process and assist in

identifying suspected cases of animal health issues. TDA also reports livestock exporting numbers to the USDA Agriculture Marketing Service; work closely with USDA and Texas Animal Health Commission on tick surveillance; monitor livestock health and reporting of animal transportation laws (especially with the transport of slaughter horses); and provides assistance for industry members in promoting and exporting their livestock internationally.

The Laredo export facility has helped pave the way for North American livestock movement into Mexico. Operating since 1974, the Laredo facility has become the industry's leading export facility for dairy cattle, exporting approximately 10,000 head of dairy cattle and over 600 head of various breeds of beef cattle in 2019. This facility also exports a large amount of exhibition

and breeding horses. Some of the rarest animals that have been exported here including Okapi, Malaysian Tapir, Striped Hyena and Rhino. TDA works closely with multiple international and national government agencies like USDA and U.S. Fish and Wildlife

Services, to help streamline the exporting process.

The El Paso export facility opened in 1974 and this facility has been known to see animals like beef and breeding cattle, breeding swine, slaughter horses, poultry and some exotics like wolfs. Approximately 30,000 head per year of cattle, horses and swine cross into Mexico through the El Paso facility and about 200,000 head of poultry.

The Brownsville export facility was opened in September 2010 and exports an average of 29,000 head per year. Some of the major animals exported include breeding swine, beef cattle (for both breeding and slaughter), equine for sport, work, breeding and semen. Some of the most interesting and exotic animals exported here include giraffe, deer and hippopotamus.

The Houston export facility opened its gates to exports earlier this year in January. Prior to the new facility, the old Houston Export Facility exported thousands of animals over 45 years. Typical exports consist of world class horses, from breeds ranging from Arabians to wild mustangs, that are shipped all over the world via air freight. The most common destinations from Houston include Europe, the Middle East and Asia.

Though still currently under construction, the Del Rio export facility is capable of running horses, cattle and sheep. For more information about export facilities, please visit our [website](#). 



TDA Export Facility in Laredo, Texas

TDA REPORT ON CUSTOMER SERVICE

TDA's customers are as diverse as the Lone Star State. From shoppers who rely on the accuracy of commercial scales, to school children in need of healthy meals, to farmers licensed to produce industrial hemp. All of the approximately 29 million Texas residents reap the many rewards provided by Texas agriculture every day.

Every biennium, TDA completes a Report on Customer Service to gauge our effectiveness in providing service and benefits to Texans. TDA's customers are those persons, companies or entities with whom TDA directly interacts for licensing, grant and other program participation.

We are pleased to report the customer service survey findings indicate the Texas Department of Agriculture (TDA) is meeting customer needs and expectations exceptionally well, with a majority of categories receiving more than a 90 percent favorable rating. We are proud of these encouraging results.

The mission of TDA, under the leadership of Commissioner Sid Miller, is to partner with all Texans to make Texas the nation's leader in agriculture, fortify our economy, empower rural communities, promote healthy lifestyles, and cultivate winning strategies for rural, suburban and urban Texas through exceptional service and the common threads of agriculture in our daily lives. In doing this, TDA has continually achieved a reputation of customer service excellence. We place a high priority on our ability to continue this tradition, and our agency does so under Commissioner Miller's leadership.

To view the 2020 TDA Customer Survey, please click this [here](#).

You can also view the [2018](#) and [2016](#) customer surveys. 🇺🇸



2020 Customer Survey Report At-A-Glance

Percentage of Customers
Expressing Overall Satisfaction
with TDA Services:

94%

Total Respondents to Survey:

703

Total Customers Served by TDA:

29 million

Respondents who indicated
TDA staff were courteous:

96%

Respondents who believe the
mission of TDA is important:

99%

DOODLEY DEE'S FARM

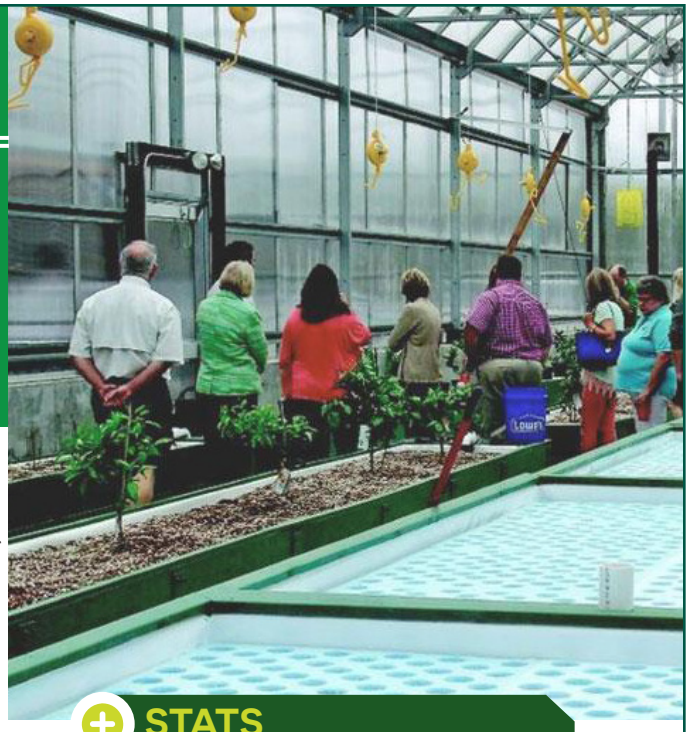
FARM PROFILE

This month's featured farm is Doodley Dee's Farm in the town of Karnack, deep in the Piney Woods region of northeast Texas.

As a mother, Denise Bankston was looking for more options for purchasing fresh fruits and vegetables, so she started Doodley Dee's Farm. Denise, known to family and friends as "Dee Dee," found out that a good family farm was best for her family and for customers in the area. Her five children and seven grandchildren all like taking part in chores on the farm, growing fruits and vegetables not only for their own family, but for people all over northeast Texas, northwest Louisiana and other places.

Doodley Dee's is always looking for new and better ways to offer even more healthy food choices.

Greenhouse at Doodley Dee's Farm



+ STATS

Owner: Denise (Dee Dee) Bankston

Location: Karnack, Texas

Specialty: All-natural produce, fish



© sheftime / Adobe Stock



TEXAS DEPARTMENT OF AGRICULTURE
COMMISSIONER SID MILLER

This product was funded by USDA. This institution is an equal opportunity provider.



SUMMERFOOD.ORG



TEXAS DEPARTMENT OF AGRICULTURE
COMMISSIONER SID MILLER



Fraud Hotline: 1-866-5-FRAUD-4 or 1-866-537-2834

This product was funded by USDA. This institution is an equal opportunity provider.
You will only be sent information needed to find meal sites. Your personal information will not be shared.

HEALTHY SUMMER MEALS FOR KIDS

No Cost For Kids 18 and Younger and
enrolled students up to 21 with disabilities



TDA Maintaining Momentum for Summer Meal Programs after Early Start

The Summer Meal Programs got an early start this year as sites across Texas began operating in March instead of the typical opening day around June 1. Despite enormous challenges, schools, nonprofits and community organizations worked with the Texas Department of Agriculture (TDA) to serve healthy meals and meet a critical need resulting from school closures amid COVID-19. These dedicated TDA partners served more than 75.5 million federally funded meals in March, April, and May 2020, which is more than five times the 13.5 million Summer Meal Programs meals served for May through September in 2019.

Although the numbers are remarkable, the need for these meals will continue this summer as plans are readied for serving meals during the upcoming school year. Projections from Feeding America, a national network of food banks, show the rate of child

food insecurity will increase by at least 23 percent in every Texas county in 2020 compared to 2018. The projections also indicate at least one in five children in every Texas county will be food insecure and, in some counties, close to half the children will experience food insecurity.

TDA administers the federally funded Summer Meal Programs that enable partnering organizations to provide healthy, no cost meals to children 18 years old and younger, and enrolled students with disabilities up to 21 years old. Everyone can support TDA in maintaining the momentum for the Summer Meal Programs this month and next. Ensuring families know about the program and how to find a meal site connects more children with the nutrition they need for an active, health summer. 🇺🇸

How Do
I Find A
Meal Site?

- Visit www.SummerFood.org to access an interactive meal site map
- Text FOOTX or COMIDA to 877-877 for a list of the three closest meal sites
- Call 211 to speak to a live operator

For more info and additional resources please visit our website.



By Alpsdake - Own work, CC BY-SA 3.0, <https://commons.wikimedia.org/w/index.php?curid=21275572>

Identifying the Asian Giant Hornet

The Asian giant hornet (so famously named "murder hornet") has made an appearance in Texas. But this species can be easily mistaken for other species of hornets.

The Asian giant hornet (AGH) is a social wasp species. Its native range extends from northern India to East Asia. This pest was first reported in the Vancouver Island area of Canada in August 2019 and has since been detected in the far northwest corner of Washington State.

There have been several resident inquiries about sighting of the Asian giant hornet in Texas. These multiple finds indicate there's a population in the area, but USDA's Animal and Plant Health Inspection Service (APHIS) does not consider the population to be established. APHIS considers a pest to be established in an area when there is evidence of a reproducing population over multiple years. However, several local hornets can be mistaken for this species. Browse the Asian giant hornet lookalikes by clicking the arrow in the top right hand corner of the photo.

Browse the Asian giant hornet look-a-likes by clicking the arrow in the top right hand corner.

Animal Plant Health Inspection Service's Plant Protection and Quarantine (APHIS-PPQ) program has provided over \$400,000 in funding in fiscal year 2020 to support exotic hornet research and an AGH survey in Washington.

Thankfully, AGH does not attack people unless it feels threatened. An AGH's stinger is longer than that of bees or wasps but their venom is

more toxic. People with an allergy to bee or wasp stings should take particular caution and calmly leave the area if they believe they have sighted an AGH.

People should report potential Asian giant hornet sightings to the TDA Plant Quality Specialists at PlantQuality@TexasAgriculture.gov or by calling (512) 463-7660. 🇺🇸

CHERRY TOMATOES

HARVEST OF THE MONTH
JULY



Cherry tomatoes are small, bite-sized tomatoes. Most are red, but some are yellow, green or black. Some are small as thumb tips while others are the size of golf balls. They grow best in warm weather and love to sun bathe. Cherry tomatoes grow on vines but farmers usually use trellises or fences to support their weight. Believe it or not, the tomato is technically a fruit. Most people think of them as a vegetable since they're commonly used in savory (not sweet) dishes.

DID YOU KNOW?

Tomatoes continue to gain weight after they are picked because they ripen from the inside out and produce more juice. If you place a tomato in the fridge the ripening process will stop.

FUN FACT

Tomatoes are thought to come from Peru, where their Aztec name translated to "plump thing with a navel."



CHERRY TOMATO
GROWING REGIONS

1. East Texas
2. Rio Grande Valley



TEXAS DEPARTMENT OF AGRICULTURE
COMMISSIONER SID MILLER

This product was funded by USDA. This institution is an equal opportunity provider.



TEXAS WINE PAIRINGS

for the **SUMMER SEASON**

“RICHNESS OF TEXAS” MENU

Appetizer

LYONNAISE SALAD

*Frisée Lettuce, Warm Vinaigrette,
Crispy Bacon, & Poached Egg*

WINE OPTIONS:

SAUVIGNON BLANC
RIESLING

try it with...

APPETIZER OPTION 1: SAUVIGNON BLANC

Sauvignon Blanc is a nice dry, crisp, medium bodied white wine, with flavors of lime, green apples, pears and other green herbal flavors. The herbal notes in the wine pair beautifully with the greens in the salad, with the fattiness from the bacon and egg yolk and helps coat the mouth and cut some of the acidity in the wine.

APPETIZER OPTION 2: RIESLING

A dry Riesling has flavors of apricots, lemon and honey, with a light body and high acidity which makes it a great choice for a Lyonnaise salad. The savory flavors and fat in the bacon and egg are a great compliment to the high acidity and crisp flavors in the wine.



Dinner

STEAK

*with Garlic, Parmesan, & Truffle Frites
ESCOFFIER'S BORDELAISE*

WINE OPTIONS:

CABERNET SAUVIGNON
MERLOT

pairs with...

DINNER OPTION 1: CABERNET SAUVIGNON

A beautiful red wine that is dry, full bodied, with medium acidity and flavors of black currant, blackberry, anise and tobacco. The full body and high tannins in a cabernet sauvignon with its savory flavors craves a highly flavored, well marbled steak to bring out the black fruit flavors in the wine.

DINNER OPTION 2: MERLOT

A very dry, medium bodied and medium acidity, has bold flavors of black cherry, plums, vanilla and chocolate. The bold flavors pair perfectly with the bold fattiness of the steak and with more earthy notes in a merlot, it's a great way to accentuate those in the bordelaise sauce and truffle frites.



Dessert

WHITE CHOCOLATE PANNA COTTA

with Berry Compote

WINE OPTIONS:

ORANGE MUSCAT
SPARKLING MOSCATO

great with...

DESSERT OPTION 1: ORANGE MUSCAT

Orange Muscat is a sweet dessert wine that is medium bodied and medium acidity with flavors of orange, lemon and honey. The sour sweetness in the wine helps balance the sweetness from the panna cotta and berries.

DESSERT OPTION 2: SPARKLING MOSCATO

A Sparkling Moscato is a semi sweet, highly acidic with a medium body. This sweet and crisp wine is full of orange, peach, nectarine and floral flavors. The acidity helps cut through the sweetness of the panna cotta, while accentuating the like flavors of the berries. With the effervescence helping cleanse the mouth after the creamy dessert.



UNCORKTEXASWINES.COM

TEXAS WINE PAIRINGS

for the **SUMMER SEASON**

“TASTE THE SUMMER HEAT” MENU

Appetizer

TERRACOTTA CHILI SHRIMP
with Tomato Relish

WINE OPTIONS:

RIESLING
CHENIN BLANC

try it with...

APPETIZER OPTION 1: RIESLING

Riesling is an off dry white wine that is light bodied with high acidity. The wine boasts flavors of lemon, lime, pear, pineapple, beeswax and fuel. The sweetness and high acidity combination in Riesling makes it a great match for strong flavored and spiced foods while still light enough for the shrimp.

APPETIZER OPTION 2: CHENIN BLANC

Chenin blanc is a light-medium bodied dry white wine with high acidity. Flavors of yellow apple, quince, pear, lemon, and honeysuckle. The high acidity and sweetness in a chenin blanc makes it a great combo to the spiced shrimp paired with the sweetness in the tomato relish.



Dinner

HERB RUBBED CHICKEN
VEGETABLE KEBABS
with Tarragon Aioli
GRILLED POLENTA
with Spinach & Robiola Cheese

WINE OPTIONS:

CHARDONNAY
PINOT NOIR

pairs with...

DINNER OPTION 1: CHARDONNAY

An oaked chardonnay is dry and medium bodied, that has flavors of lemon, apple, pineapple, and butter. The subtle and light flavor of the chicken and vegetables will really accentuate the fruit flavors in the wine while the cheese will accentuate the creamy, buttery texture of the wine.

DINNER OPTION 2: PINOT NOIR

A dry, light bodied red wine with flavors of cherries, raspberries, cloves and mushrooms. The high acidity and low tannins makes it a great pairing for lighter meats, like chicken and complex enough to match the flavors of all the herbs and the soft Robiola cheese.



Dessert

MIGUELITOS
(Spanish Lemon Cream Filled Pastry)

WINE OPTIONS:

SPARKLING WINE
ALBARIÑO

great with...

DESSERT OPTION 1: SPARKLING WINE

Sparkling wine is a dry, medium bodied wine with flavors of apples and apricots, honeycomb and vanilla. The lemon cream flavors of the cream match those similar acidic flavors in the wine, with the dry effervescence balancing out the sweetness of the overall dessert.

DESSERT OPTION 2: ALBARIÑO

Albariño is a dry, light bodied white wine that is highly acidic and flavors of lime, lemon zest, grapefruit and nectarine. The light body and lemon flavors in the Albariño make it a great pairing for the miguelitos. The accentuation of the lemon flavors while the dry acidity help cut through the creamy richness of the pastry.



UNCORKTEXASWINES.COM

#Sip&StaySafe

2020 Census Operational Adjustments Due to COVID-19

The 2020 Census is underway, and more than half of the households across America have responded and more are responding every day. Online, phone, and mailed self-responses will continue throughout the data

collection process. In light of the COVID-19 outbreak, the U.S. Census Bureau has adjusted 2020 Census operations in order to:

- Protect the health and safety of the American public and Census Bureau employees.

- Implement guidance from federal, state, and local authorities regarding COVID-19.

- Ensure a complete and accurate count of all communities.

The information the Census Bureau receives daily from FEMA and state and local authorities guides Census Bureau decisions on timing. As a result, selected field operations will resume on a phased schedule on a geographic basis.

The extension for the 2020 Census application has been extended to October 31, 2020. For additional information regarding the 2020 Census, please visit www.2020census.gov and connect with the Census Bureau on social networks @uscensusbureau.

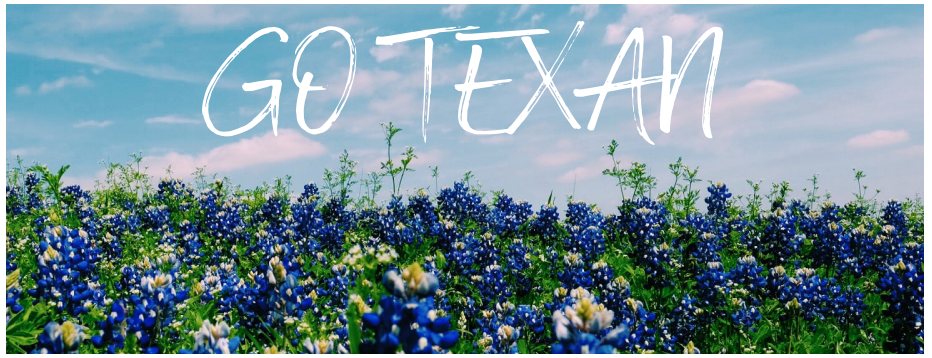




GO TEXAN.®

NEW MEMBERS!

- ★ [Glenn's Salsa](#)
- ★ [Father Thyme Herbals](#)
- ★ [Texas Tang BBQ Sauce](#)
- ★ [Village Creek Roasters](#)
- ★ [Morris Kitchen](#)
- ★ [4J Prosperity LLC](#)
- ★ [Lila Rosa Artisan Cheese](#)
- ★ [O Fudge](#)
- ★ [True Harvest Farms LLC](#)
- ★ [Klowns On Fire LLC](#)
- ★ [LeafLife Wellness](#)
- ★ [Peach Tree Hill Goats](#)
- ★ [9 Kids Compost](#)
- ★ [Savor Patisserie LLC](#)
- ★ [Walston Ranch](#)
- ★ [William Price Distilling Company](#)
- ★ [Cypress Hill Lavender Farm](#)
- ★ [Top of Texas Apples INC](#)
- ★ [Sergeant TS LLC](#)



JOIN A TEXAS-SIZED MOVEMENT

WHAT
does it mean?
When you see the mark, you know the product or place has been proudly certified as authentically Texan.

WHERE
do you find it?
Look for the mark anywhere you shop, from local farmer's markets to national retail chains.

GO TEXAN.®

FIND THE MARK
that matters

Support Texas.
Want to learn more?
gotexan.org
#GOTEXAN

TEXAS DEPARTMENT OF AGRICULTURE
COMMISSIONER SID MILLER

IN THE NEWS



GO TEXAN member Fountainville Creamery and Soda Fountain has been a blessing in the West Texas heat. Read about their famous flavors like Tumbleweed, Black Gold and Sandstorm in the [Midland Reporter Telegram](#).

When buying GO TEXAN products consumers know that they're buying the best in Texas. They're supporting local businesses and the Texas economy, and creating jobs for Texans. The GO TEXAN mark signifies they're buying quality and originality. Join this Texas sized movement and become a member today, www.gotexan.org.

Did You Know?

TDA equipment at the Metrology Lab is designed to be sensitive for weighing and measuring purposes. It is precise enough to detect vibrations produced by an earthquake experienced anywhere around the world.

TDA Prescribed Burning Board regulates certified and insured prescribed burn managers (CIPBM). Becoming a CIPBM limits the liability for private landowners and commercial burn managers who wish to use prescribed burning as a land management tool. CIPBMs also have ability to perform burns during burn bans. Burners wishing liability protection when performing prescribed burns must become certified under the Prescribed Burning Board program.

TDA processes circus animals through the Laredo livestock export facility.



Texas Ag Stats:

- ☆ There are almost 800 blackberry and dewberry farms in Texas.
- ☆ Cut flowers and cut flower greens generated \$2,371,896 in 2017.
- ☆ Texas is home to about 7,500 bison and accounted for more than \$2,485,000 in sales in 2017.
- ☆ In 2017, about 5,689,241 pounds of honey was collected in Texas.
- ☆ There are roughly 15,000 deer in captivity in Texas as of 2017.

Recipe of the Month

Zucchini Taco Boats With Chicken

Ingredients

4 medium zucchini
1 pound boneless, skinless chicken breasts or thighs
2 teaspoons olive oil
1/2 cup diced onion
1 teaspoon chili powder
1 teaspoon cumin
1 teaspoon dried oregano
1/2 teaspoon paprika
1/2 teaspoon salt
1/2 cup tomato sauce or salsa
1/2 cup shredded cheese

Directions

1. Preheat oven to 400 degrees and lightly coat a 9-by-13-inch baking dish with nonstick spray.

2. Slice zucchini in half lengthwise and scoop out centers, reserving the flesh in a bowl. Place zucchini hollow-side up into baking dish.

3. Cut chicken into small pieces, about half-inch cubes. Warm olive oil in a sauté pan over medium-high heat, then add chicken and cook until cooked through and starting to brown, about 8 minutes. Add onion and reserved zucchini flesh and continue to cook 1 minute.

4. Mix together chili powder, cumin, oregano, paprika and salt and sprinkle over chicken. Stir to coat and cook 2 minutes. Stir in tomato sauce or salsa and simmer 5–10 minutes, until thickened.

5. Divide chicken mixture into zucchini and top with cheese.

6. Cover with foil and bake 35 minutes.

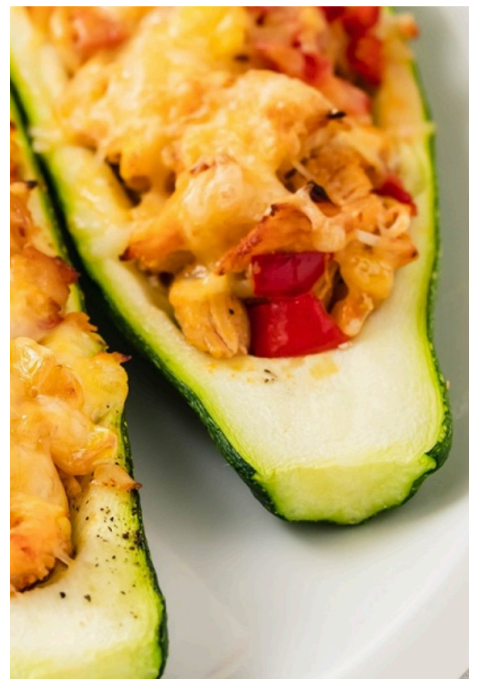


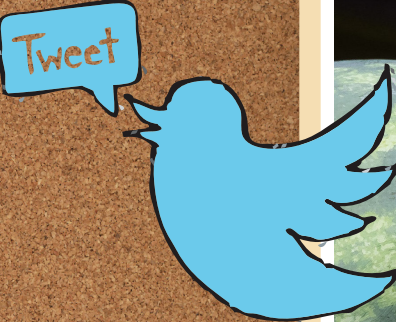
IMAGE: IRINA / STOCK.ADOBE.COM

Your Thoughts...

on the State Fair of Texas opening this fall



CW33.COM
The State Fair of Texas says it will open as usual despite coronavirus



Ashley Riley Good. It's mostly outdoors and if people wear masks for the close proximity or indoor sections, and carry hand sanitizer, it'll be great. 😊
Of course I've never been when it's super crowded because I always take a day of vacation in the middle of week for fair time so I'm not used to it packed 🤔😁

Sherri Reynolds Way to go Texas state fair

Rebecca Lynn Bruder Hopefully there will be careful limitations on numbers of visitors in the fair at one time and plenty of sanitation methods

Lena Ann Can Big Tex sport a big mask? 😂

Kevin Morris Skipping this year



JULY 2020

Tell Us... what is your favorite summer fruit or vegetable?



@TexasDepartmentofAgriculture



@TexasDeptofAg



@TexasAgriculture

TEXAS AGRICULTURE *Matters!*



TEXAS DEPARTMENT OF AGRICULTURE
COMMISSIONER SID MILLER

Produced by the Office of Communications
Editor, Katlyn Gast

www.TexasAgriculture.gov
(800) TELL-TDA

