



TX Agriculturalist

Cowboy-Up Chocolates bring a western twist to delicious truffles, treats, and more.



PCB Fund

Grant application open for community development until March.



TDA Updates

Essential Worker Letter, Food & Nutrition, AgriStress Helpline, Recipe of the Month & more!



TEXAS AGRICULTURE Matters!

Your monthly connection to the Texas Department of Agriculture.

Volume 3
Issue 2
February 2022



Howdy Neighbors!

Welcome to the Texas Agriculture Matters newsletter, your monthly connection to the Texas Department of Agriculture.

You know what it takes to be successful in agriculture? Two things you probably wouldn't have guessed - love and good soil. Valentine's Day is only one day for many but for our farmers and ranchers, Valentine's Day is everyday.

Your roses may have come from Tyler, Texas, Rose Capital of the World. The wine you enjoy was most likely made with grapes grown right here in the Lone Star State. You can even buy chocolates made with local, Texas sourced ingredients. Whatever your plans may be, agriculture will surely be at the center of your Valentine's Day.

Remember friends,
Texas Agriculture Matters!

Sid Miller

Texas Agriculture Commissioner

Texas Agriculture and Valentines Day

Without Texas farmers and ranchers, Valentine's Day wouldn't be possible. Steak Dinner? Cattle rancher. Bouquet of roses? Horticulturalist. Glass of wine? Thank a vigneron.

It's estimated that Americans spent over \$21 billion on Valentine's Day in 2021. Out of eight other categories of popular gifts recorded, candy, an elegant dinner, and flowers topped the chart. But none of these sweet treats, delicious glasses of wine, or steak dinners would be possible without Texas agriculture. This year, lasso up some love and consider asking your local dairy farmer, horticulturalist, sugar cane farmer, or beef cattle rancher to be your Valentine!

Your roses may come from the Rose Capital of the World, in Tyler, Texas, and the box of chocolates from Cowboy-Up Chocolates, and the wine you buy probably came from a Texas Hill Country vineyard.



Whatever you may be planning this Valentine's Day, agriculture is sure to be at the center of your celebration. But where Cupid's arrow really hits the mark is a farmer's love that is tilled, sowed, and worked into the soil day in and day out.

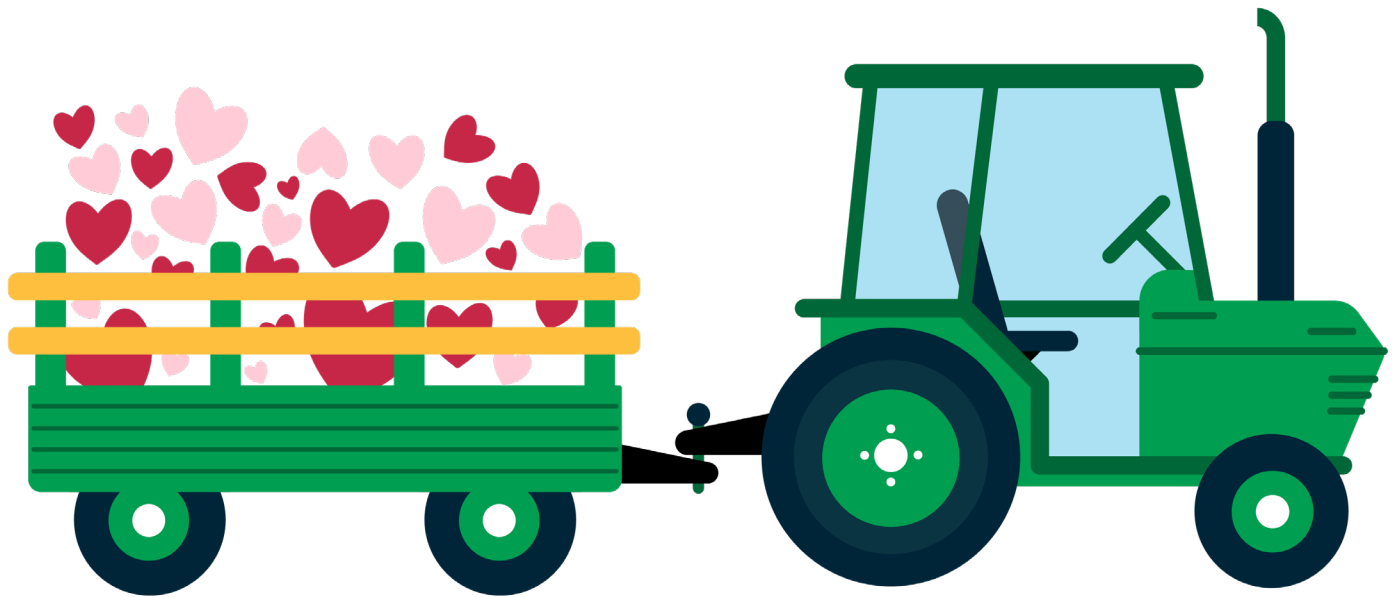
Texas Agriculture and Valentine's Day continued...

When the candles are blown out, the candies have been eaten, and the rest of the world moves past Valentine's Day, agriculture producers will continue to instill love into everything they do.

"If it wasn't for agriculture, Cupid's arrow would miss the mark this Valentine's Day," says Texas Agriculture Commissioner Sid Miller. "When you treat your valentine to candy, flowers, or

dinner out, you are depending on agriculture to make it the perfect occasion. On Valentine's Day and every day, it's clear Texas agriculture matters in each of our lives." 🇹🇽

Agriculture requires two things to be successful – soil and love. Whether they're growing crops or raising livestock, farmers and ranchers share a love for the land. It's this love that is brought home to your table and shared with family and friends, through the good times and the bad. The love, attention to detail, and devotion that our producers carry out from sunrise to sunset is a love to celebrate every day.



TEXAS AGRICULTURE *Matters!*



TEXAS DEPARTMENT OF AGRICULTURE
COMMISSIONER SID MILLER

*Produced by the Office of Communications
Editor, Katlyn Gast*

www.TexasAgriculture.gov
(800) TELL-TDA



ABOUT COMMISSIONER SID MILLER

Sid Miller is an eighth generation farmer and rancher and the 12th Commissioner of Agriculture for the great State of Texas. Commissioner Miller has devoted his life to the agriculture industry, and supporting Texas producers and the communities they call home. He is a businessman, rancher, community leader, former ag teacher and former school board member. Commissioner Miller is a rodeo cowboy and holds 20 world championship titles. He is an honors graduate of Tarleton State University in Stephenville, where he received a Bachelor of Science in Vocational Agriculture Education.



The Texas cut flower industry generated \$2,371,896 in 2017. Cut flowers are the bouquets you find in your local grocery store or at the florist shop. According to a historical marker at the Tyler, Texas Rose Garden, the "value of bushes and flowers shipped around the world in 1973 by local nurseries totaled \$9 million."

The garden, started in 1952, now spans 14 acres and has 600 different varieties of over 38,000 rose bushes. One-half of the bushes produced each year in the United States come from the Tyler area. When you buy your Valentine's Day bouquet this year, it might include roses from right here in the Lone Star State.

The first recorded sale of rose bushes in the Tyler area was in 1879. Cotton, corn, and fruit orchards were popular in the area and by 1900 there were more than one million fruit trees in Smith County. When peach blight, drought and winter freezes wiped

out much of the fruit industry, many farmers turned to growing roses, which proved ideally suited to the climate and soil of the Tyler area.

By 1920, the rose industry continued to develop and grow into a major operation for the area. Two decades later, more than half of the U.S. supply of rose bushes were grown within 10 miles of Tyler. By 1945, there were 200 nurserymen, with 1,500 employees, growing roses commercially in East Texas, with Smith County producing 80% of the total crop.


Dr. Eldon Lyle, who moved to Tyler in 1937, was a leading pioneer in field-grown rose research. The Texas Rose Research Foundation was established in 1946 by area rose growers and Dr. Lyle became its leader for many years to follow.

In the early 1970s more than fifteen million rosebushes continued to be shipped annually from Texas throughout the United States.

By the 1990s the rose industry had diminished in Texas. Out-of-state competition, along with unpredictable weather and some lost crops during the 1980s, contributed to the decrease in production. In the early 1990s the industry centered almost entirely in Smith County around the Tyler area.

Today, major players in the national rose growing and processing industry have significant facilities in the Tyler area, such as Chamblee's Rose Nursery, Tate Rose Nursery, Lone Star Rose Nursery, Mea Nursery, Certified Roses/Sexton Roses, and many others.

Seven Tyler-area companies process and distribute several million roses each year and about 75% of all roses in the country are handled in Tyler.

For more information about Tyler, Texas roses and the rose season, please visit their [website](#). 



ABOUT TDA

The Texas Legislature established the Texas Department of Agriculture (TDA) in 1907. The agency's key objectives are to promote production agriculture, consumer protection, economic development and healthy living. The agriculture commissioner oversees the agency and is elected every four years. The current commissioner, Sid Miller, was elected in 2014 and re-elected to a second term in 2018". TDA is a diversified state agency that provides value-added services through our regulatory and marketing and initiatives. TDA is headquartered in Austin and has five regional service offices, two sub-offices, three laboratories and five livestock export facilities.

Mission:

TDA's mission is to partner with all Texans to make Texas the nation's leader in agriculture, fortify our economy, empower rural communities, promote healthy lifestyles, and cultivate winning strategies for rural, suburban and urban Texas through exceptional service and the common threads of agriculture in our daily lives.

Uncork a Texas Wine this Valentine's Day

Texas Wineries and Vineyards are perfect for creating a beautiful moment between you and your loved ones. Breathtaking places are unavoidable across the Lone Star State as you cruise our country roads to find over 400 wineries and vineyards making Texas the third largest AVA in the country. Each holds a unique experience that will fill your heart with joy, and your glass with locally made wine. From the Texas Hill Country to High Plains, Texas offers a wide range of wine varieties and styles that reflect the true beauty of the state. Our monthly events, starting from February and continuing through Spring, feature multiple opportunities to share a glass with friends and family.

To get you into the season, we prepared a wine pairing and charcuterie board with Texas based products for you and your family to enjoy. From your friends at the Texas Department of Agriculture & Commissioner Sid Miller, thank you for letting us play a role in your wine outings. 🇹🇽



Texas Valentine's Day Wine Events

VALENTINE'S DATE NIGHT AT RISING SUN VINEYARDS

February 11 @ 2pm - 8pm

Rising Sun Vineyard McDade, Texas

Game night; The Newlywed game starts @ 7pm. Prize bundle includes charcuterie, bottle of red or white, and picnic on the hill!

[MORE INFO HERE](#)

CHOCOLATE & WINE PAIRING

February 12 @ 11am - 5pm

Texas Wine Collective Fredericksburg, Texas

Our wine and special food pairings are a memorable and relaxing way to learn more about our wines while sampling local handmade chocolate.

[MORE INFO HERE](#)

TEXAS DEPARTMENT OF AGRICULTURE ★ COMMISSIONER SID MILLER

Uncork Texas Wines



UncorkTexasWines.com

SWEET SIDE OF TEXAS CHARCUTERIE BOARD PAIRINGS

We're stern believers that there are no official rules for the perfect charcuterie board. That said, we DO believe that the best ones have a little Texas flair! Each season we bring you Texas wine varietals that are perfect for the season along with our favorite charcuterie board items. From cheesy essentials to items grown in Texas, these unique board combinations are bound to impress!

ZINFANDEL



A medium-bodied, medium acidity, red wine with flavors of stone fruit, red berries, vanilla, and cinnamon. The fatty flavor in the chocolate and Comté is a pleasant contrast to the acidic Zinfandel. The fruit flavors within this wine carry hints of the preserves, cherries, blood oranges, and raspberry notes found on its accompanying board. The subtle cinnamon flavor brings out the sweet flavors from the pecans.

MERLOT



A full-bodied and highly tannic dry red wine with flavors of black cherry, plum, and chocolate. The chocolate and cheese cut through the tannins in this wine. The full, deep flavor of Merlot needs very bold flavors. This wine can also hold its own against the boldness of the venison. The honey roasted pecans bring out its slight sweetness.

CABERNET SAUVIGNON



Cabernet Sauvignon is a dry, full bodied, and high acidity wine. With flavors of black fruits, like plums, cherries, and blackberries. This wine has aromas of chocolate, black cherries, and vanilla. A very bold wine calls for very bold flavors. The selection on this board compliments those similar flavors in the wine. The venison's gamey flavor blends perfectly with the full-bodied, jammy cabernet sauvignon wine on your palate.

SHINING STARS



Maple Brie or Comté



Cherry Preserve
New Canaan Farms.

TEXAS ESSENTIALS



Honey Roasted
Texas Pecans



Shaved Grill Venison



White & Dark Chocolate



Balsamic Vinegar
Reduction

THE FIXIN'S



Blood Oranges &
Kirsch Cherries



Baguette

TEXAS AGRICURALIST

farmers and ranchers of the Lone Star State



Cowboy-Up Chocolates San Angelo, Texas



We all know anything made in the USA is good. But anything made in Texas is even better and that goes for chocolates, too. Cowboy-Up Chocolates are known for their delectable chocolates with a western twist and are the perfect Valentine's Day gift for the chocolate lover in your life.

Cowboy-Up Chocolates has been creating western-themed chocolates and

confections for the past 13 years. It was founded by James Crowder, and he was the driving force behind such creative branding, delicious products, and a memorable store experience. In November 2019, the business was sold to Misty Mullin and her husband Charles, and despite COVID-19, the business has continued to grow. The store recently moved to a larger location in historical downtown San Angelo. It has created a strong foundation of loyal customers, and travelers seeking to discover unique artisan chocolates, brittles, and toffee's not only with Texas themes but also with unique southern flavors.



WHAT ARE YOUR MOST POPULAR FLAVORS AT COWBOY-UP CHOCOLATES?



"The number one seller is the famous 'Yellow Rose of Texas' assortment. There have been many poems, songs, and stories written about Texas. The ballad 'Yellow Rose of Texas' was the inspiration, and this gourmet truffle collection was created in honor of all the ladies in Texas. Filled with 15 of the store's most popular flavors, it has been described as almost too pretty to eat."



WHERE DO YOU DRAW INSPIRATION FOR NEW CHOCOLATE DESIGNS OR FLAVORS?



"People love Texas themed products and we focus on all things western and cowboy."



WILL COWBOY-UP CHOCOLATES BE DOING ANY SPECIAL VALENTINE'S DAY FLAVORS?



"For Valentine's Day we will have several different assortments. Our large 1 pound box is called a Cowboy's Heart and holds 26 pieces of chocolate. There is also a 9 piece Retro Valentine box, 5 piece Baton Slider box,

smaller heart boxes, and our popular cattle prods (pretzel rods dipped in caramel and chocolate)."



WHO OR WHAT KEEPS YOU GOING, EVEN WHEN TIMES ARE TOUGH?



"At Cowboy-Up Chocolate's our mission is not just to create gourmet chocolates but to create memories and experiences for all our customers and community. One of our traditions is giving the ladies a colorful wooden rose with purchase."



WHERE CAN PEOPLE BUY YOUR CHOCOLATES OR FIND YOU ONLINE?




"Our customers can find us at:
6 E Concho Avenue
San Angelo, Texas
or follow us online through Facebook, Instagram, Etsy, TikTok, and our website cowboyupchocolates.com"



WHY DOES TEXAS AGRICULTURE MATTER TO YOU AND COWBOY-UP CHOCOLATES?



"Texas agriculture plays a vital role in the creation of Cowboy-Up Chocolates by providing high quality Texas pecans, Texas peanuts, Texas mesquite bean flour, and local honey." 

Click the left and right arrows to view more photos of Cowboy-Up Chocolates.

PLANNING AND CAPACITY BUILDING FUND GRANT



**APPLICATIONS
OPEN UNTIL
MARCH 16, 2022**

AWARD AMOUNT

Awards are made on an annual basis through a statewide competition. Maximum grant award is based on beneficiary population. See the most recent, published [application guide](#) for details.

EVAL & SELECTION

Please see the most recent, published application guide and [website](#) for more details. 🇺🇸

APPLICATION GUIDE

If you have a specific question about these PCB scoring factors, please contact Aubrey-Ann Gilmore at (512) 936-7894

ABOUT THE GRANT

The Planning and Capacity Building Fund is a competitive grant program for local public facility and housing planning activities. Localities apply for financial assistance to prepare a comprehensive plan or any of its components. Typical activities regard topics such as: base mapping, land use, housing, population, economic development and/or tourism, central business district, street conditions, thoroughfares, parks and recreation, water distribution and supply, wastewater collection and treatment, drainage (streets & flood hazard areas), gas or electric systems (if owned by the locality), community facilities, capital improvements program, zoning ordinance, subdivision regulation.

Section 105(a) of the Housing and Community Development Act of 1974, as amended, outlines all the generally eligible activities.

ELIGIBILITY

- Address needed local planning elements;
- Assess local needs;
- Build or improve local capacity;
- Develop strategies to address local needs.

The planning process should result in an improved local capacity to identify long and short term needs and to develop implementable strategies to address the identified community needs. Emphasis is placed on public works and housing assistance planning.



USDA investing \$1B in expanding meat and poultry processing capacity

In July 2021, USDA issued a Request for Information (RFI) to solicit public input into its strategy to improve meat and poultry processing infrastructure and will hold targeted stakeholder meetings and other public engagement to better understand the needs, gaps, and barriers to fair and competitive meat processing markets.

This funding will be delivered through a variety of programs. Some are already underway and others will be developed soon. The following are open grant programs you can apply for today.

Open Programs

Reduce Overtime and Holiday Inspection Costs for Small and Very Small Processing -


\$100 million to help small and very small processing plants keep up with unprecedented demand.

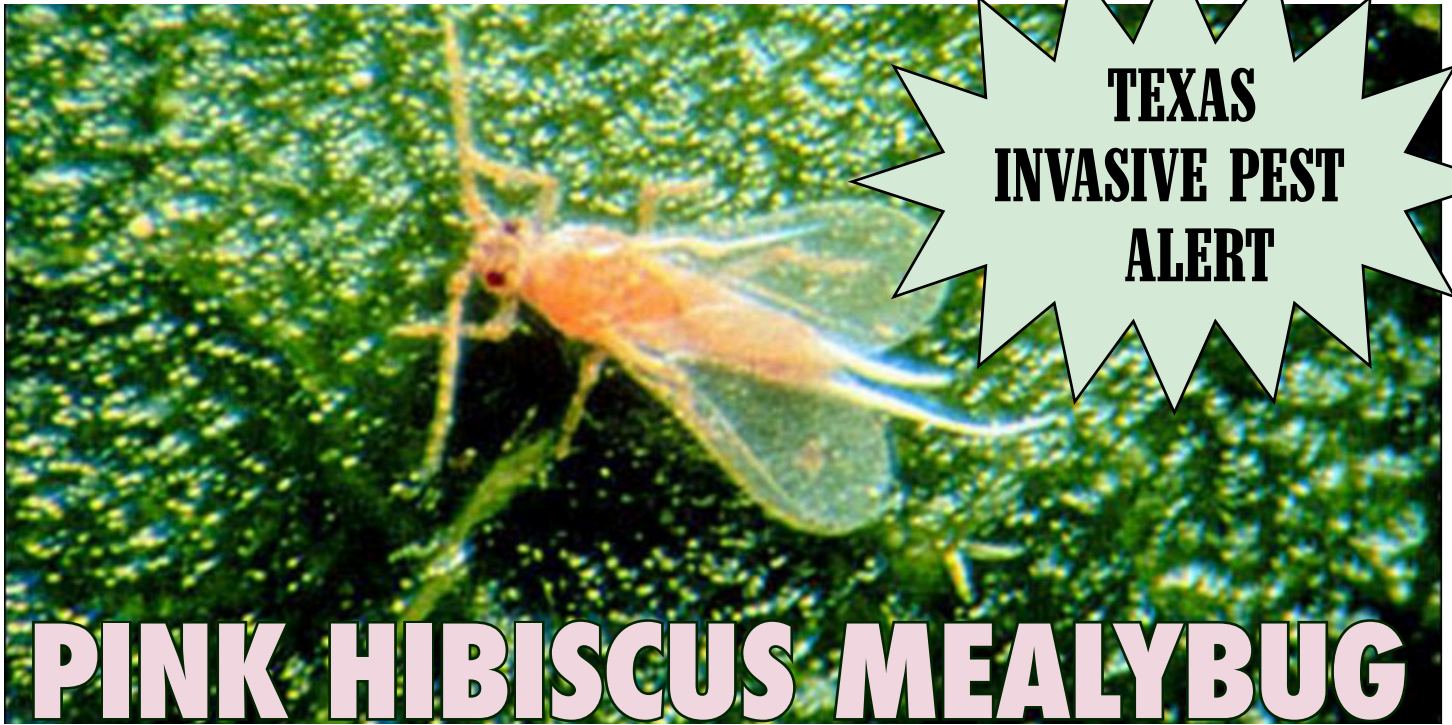
Food Supply Chain Guaranteed Loans -

\$100 million in funding to make more than \$1 billion in guaranteed loans. Applications for these guaranteed loans will be accepted until funds are expended.

For more information about how USDA is working to build a fairer, more competitive, and more resilient poultry and meat supply chain, click here to view the White House Fact Sheet below.

WHITE HOUSE FACT SHEET

To view recorded webinars on food supply chains, view pending programs, view fund distributions, and how USDA is strengthening the rules and enforcement to support farmers and ranchers, please visit their [website here](#). 



*Adult male pink hibiscus mealybug, *Maconellicoccus hirsutus* (Green). Notice the two long waxy "tails."
Credit: Marshall Johnson, Department of Entomology, University of Hawaii at Manoa*

WHAT IS THE PINK HIBISCUS MEALYBUG?

The pink hibiscus mealybug is a serious economic threat to agriculture, forestry, and the nursery industry. This pest attacks many plants, trees, and shrubs. For example, it infests hibiscus, citrus, coffee, sugar cane, annonas, plums, guava, mango, okra, sorrel, teak, mora, pigeon pea, peanut, grape, maize, asparagus, chrysanthemum, beans, cotton, soybean, and cocoa, just to name a few of its hosts. Host plants extend to 76 families and over 200 genera.

Spotted the pink hibiscus mealybug? Report it by emailing PlantQuality@TexasAgriculture.gov or call (512) 463-7660

IS IT FOUND IN TEXAS?

The pink hibiscus mealybug was recently detected at separate homes in Harris and Brazoria counties. In cooperation with the U.S. Department of Agriculture, the Texas Department of Agriculture (TDA) collected 20 suspect mealybug samples from approximately two square miles surrounding the Pearland home.

Of these 20 samples, six were confirmed as the pink hibiscus mealybug. TDA will initiate a similar survey around the southwest Houston home where the other mealybug was detected to determine the extent of infestation.

CONTROL MEASURES

Inspectors have initiated control measures using biological control. They are releasing parasitic wasps at all locations where the pink hibiscus mealybugs were found.

Research has shown these parasitic insects are the best method to control mealybugs, resulting in approximately 90 percent success rate. The tiny wasps will only attack the mealybugs, not humans or pets. Upon release, the wasps lay eggs inside the mealybugs and as they grow, the mealybugs die.

As wasps multiply, they spread in search of additional mealybugs. A successful mealy bug control requires several months. 🇺🇸

Health Ambassadors for a Ready TEXAS Builds Stronger Student Bodies



Learning and leadership go hand in hand for students in the Texas Department of Agriculture's (TDA) Health Ambassadors for a Ready Texas (HART). Among the current class surveyed about their fall-semester activities, 92 percent reported learning more about school nutrition and Texas agriculture, and 98 percent reported improving their leadership skills. This class will be in place through May 2022 and TDA will begin accepting HART applications for the 2022-2023 school year next month.

Agriculture Commissioner Sid Miller created HART in 2018 to give students a voice in promoting school meals by engaging with TDA and their school nutrition teams. TDA provides resources and establishes goals for the students to achieve over the course of the year. Last fall TDA helped HART students use their creativity and leadership to increase participation in National School Lunch Week and more.


On campus, school nutrition teams and HART advisors are key to guiding the students in their endeavors. They advise ambassadors on how to educate their peers about healthy lifestyles, good nutrition, and Texas agriculture. Some HART students arranged to go to an elementary school to encourage children to eat healthy. The HART students also encouraged the children to take advantage of the elementary school's participation in the Fresh Fruits and Vegetable Program, which is administered in Texas by TDA.

Several students created newsletters that promoted good nutrition and school meals for their peers, while some distributed stickers and pins provided by TDA. Most students promoted school nutrition and National School Lunch Week by reading morning announcements and daily menus for all classrooms.

In addition to increased nutrition knowledge and leadership skills,

students reported having a broadly satisfying experience that included pride in what they are doing and a better understanding of the complexities inherent in getting food from farms to tables. One student had the following assessment that sums up the HART experience.

"I would just like to thank the HART team for this amazing opportunity that has allowed me to interact with school staff, as well as the student body. It has also allowed my creativity to show, and leadership skills to be put into action."

More information and the application for next school year are available at SquareMeals.org/HART 

ANNOUNCING THE AGRISTRESS HELPLINE *for Texas Agriculture Providers*

Article courtesy of [AgriSafe](#).

Texas agricultural producers and farmworkers are hard workers and represent an unyielding force that suffers backbreaking work to provide for others. Unfortunately, the agriculture industry is considered one of the top occupations with the highest percentage of deaths by suicide.

Key factors contributing to these rates include financial losses, chronic

illness or pain, a sense of work-life imbalance, and the physical or social barriers to access mental health services. Agricultural occupations are vulnerable to circumstances that are out of their control, such as unpredictable weather patterns, falling market prices, and labor shortages.

Even if a farmer or rancher attempts to seek mental health care, they generally reside in rural areas. In Texas, 75% of the 406 federal Mental

Health Professional Shortage Area (MHPSA)

designations are in rural areas. Therefore, Texas farmers and ranchers who may be of the greatest need of any occupational group are going without vital mental health services. 🇹🇽

WHAT MAKES THIS HELPLINE UNIQUE?

- ★ Accessible to the Texas agricultural community 24/7
- ★ Staffed by credentialed professionals trained to respond appropriately to the agricultural community through a program developed by experts in mental health, agriculture production, mediation, and financial analysis
- ★ Utilizes a "care navigation" process that:
 - a) triages for safety with crisis intervention and response;
 - b) directs callers to the appropriate resources for their situation



IT'S OK TO ASK FOR HELP

Have you experienced problems like rising costs, market fluctuations, family conflicts, or extreme weather?

Are you stressed or feeling defeated?

Even the toughest people
NEED HELP sometimes.

AgriStress
HELPLINESM
for Texas

833-897-2474



Scan code
to save the
number!



**IN TEXAS, 75% OF
THE 406 FEDERAL
MENTAL HEALTH
PROFESSIONAL
SHORTAGE
AREA (MHPSA)
DESIGNATIONS ARE
IN RURAL AREAS.**

If you, or a loved one is
experiencing signs of stress,
please call:

AgriStress Helpline
833-897-2474

A professional trained to meet
agricultural workers specific needs
will be available to assist you.

The Texas Department of Agriculture, in partnership with the national nonprofit AgriSafe Network and the Southwest Center for Agricultural Health, Injury Prevention and Education (at The University of Texas Health Science Center at Tyler) designed this comprehensive agricultural crisis helpline for Texans.

AGRICULTURE WORKERS ARE ESSENTIAL

Are you an essential worker? If you work in agriculture you are. The food and agriculture sector are specifically designated by federal and state authorities as a critical infrastructure sector whose assets, systems, and networks are considered so vital that their incapacitation or destruction would have a debilitating effect on national and state security, national and state economic security and national and state public health & safety.

YOU ARE CONSIDERED AN ESSENTIAL WORKER IF YOU ARE:


- ★ An agricultural worker and/or food production worker involved in the production of field crops, the manufacture of human food and/or the distribution of agricultural products and other human food through wholesale, retail, auction, market and/or foodservice distribution within a sector;
- ★ A farm or nursery involved in the retail or wholesale sale of trees or plants; and/or a worker involved in horticulture, including floristry; or the mitigation of diseases and pests through the application of pesticides or herbicides;
- ★ A retail or wholesale supplier of clothing and/or specialized garments related to agriculture or ranching; a retailer in the sale of firearms or ammunition;

The screenshot shows the Texas Department of Agriculture website. At the top, it says 'TEXAS DEPARTMENT OF AGRICULTURE COMMISSIONER SID MILLER'. Below that is a navigation menu with links like HOME, NEWS & EVENTS, GRANTS & SERVICES, REGULATORY PROGRAMS, LICENSES & REGISTRATIONS, FOOD & NUTRITION, EDUCATION & TRAINING, REPORTS & PUBLICATIONS, ABOUT AGENCY, and FORMS. The main content area features a photo of Commissioner Sid Miller and a large red button that says 'DOWNLOAD LETTER HERE!' with a white arrow pointing to the right. Below the button is a preview of the 'AGRICULTURE ESSENTIAL WORKER LETTER' document, which lists various agricultural activities considered essential. To the right of the document is a search bar and a section titled 'I Need To...' with links to resources like 'Learn How To Get A Texas Hemp License' and 'Find a Licensed Service Company'.

- ★ Agricultural production and distribution as well as employees engaged in the service, transportation or manufacture related thereto and the maintenance of equipment related to such production and distribution;
- ★ Businesses conducting livestock shows as well as the training of racehorses or show horses; businesses, organizations, producers or farmers conducting agricultural events or festivals related to the planting, harvesting, production, marketing or sale of any agricultural products;
- ★ Public and private sector employees engaged in the regulation, inspection, service, transportation, manufacture,

harvesting, wholesale, or retail sales related to agriculture production and distribution.

Commissioner Sid Miller and the Texas Department of Agriculture are here to make sure agriculture workers and producers can continue to work, travel, and attend to farm business as needed during the COVID-19 pandemic.

The Agriculture Essential Worker Letter will notify state and local officials that agriculture workers should not be impeded from conducting their business.” 

You can find the Agriculture Essential Letter at [TexasAgriculture.gov](https://www.texasagriculture.gov) in Spanish and English.

For more information on Executive Order No. GA-38, 39, and 40, please visit [here](#).

Commissioner Miller Serves as Keynote Speaker

Commissioner Miller's 2022 started off strong. He attended the Texas Association of Fairs and Events (TAFE) the first week of January as a keynote speaker. TAFE is an organization for fair, festival and event professional staff and volunteers; and for businesses and organizations that supply fairs and festivals with goods and services. "I was proud to serve as keynote speaker this weekend in Galveston to about 700 attendees at the Texas Association of Fairs and Events. These fine folks put on our rodeos, stock shows, county fairs and other events tied to agriculture," said Commissioner Miller. 🇺🇸



COMMISSIONER MILLER ATTENDS Texas Agricultural Aviation Association Convention



Agricultural aviation is an important part of the overall aviation and agriculture industries. The industry consists of small businesses and pilots that use aircraft to aid farmers in producing a safe, affordable and abundant supply of food, fiber and biofuel. Aerial applicators protect forestry and play an important role in protecting the public by combating mosquitoes carrying West Nile



virus, encephalitis and other diseases. "It's always an honor to be with our aviation pilots. They do great work and are a crucial part of the Texas ag economy," said Commissioner Miller. 🇺🇸



GO TEXAN.[®]

FIND THE MARK
that matters



TEXAS DEPARTMENT OF AGRICULTURE
COMMISSIONER SID MILLER

WHAT

does it mean?

When you see the mark, you know the product or place has been proudly certified as authentically Texan.

WHERE

do you find it?

Look for the mark anywhere you shop, from local farmer's markets to national retail chains.

Support Texas.

Want to learn more?
gotexan.org

#GOTEXAN



Fresh From the Field



STOCK SHOW SCHEDULE

Catch GO TEXAN Partners and Field Representatives at the next stock show and rodeo near you this season! 🇹🇽



SAN ANGELO

2/4 - 2/20

SAN ANTONIO

2/10 - 2/27

HOUSTON

2/28 - 3/20

RIO GRANDE VALLEY

3/10 - 3/20

GO TEXAN Partners at the 2022 Fort Worth Stock Show and Rodeo!

NEW MEMBERS!

GO TEXAN!

- ☆ [Rose Hemp Farms, Inc.](#)
- ☆ [Whiskey Morning Coffee](#)
- ☆ [Chuckies Beef Jerky](#)
- ☆ [Groovy Garlic Gals, LLC](#)
- ☆ [The Copper Trinity](#)
- ☆ [Noble Investments, LLC](#)
- ☆ [49 Acres Family Farm](#)
- ☆ [Alamo Coffe Company](#)
- ☆ [Beckwith Produce](#)
- ☆ [Uncle Gs Seasoning](#)
- ☆ [Cloud Nine Cotton Candy Cart](#)
- ☆ [JTPJ Ranch](#)
- ☆ [Vegout Farms](#)
- ☆ [Clarks Gringo Foods, Inc](#)
- ☆ [Ranger Creek Brewing & Distilling](#)
- ☆ [The Cheerful Roost, LLC](#)
- ☆ [Sixgun Forge and Leatherworks](#)
- ☆ [Cadence Creamery](#)
- ☆ [Primo Smokehouse and Kitchen](#)
- ☆ [Southern Champion Tray](#)
- ☆ [Tomball Farmers Market](#)
- ☆ [Saucy N Swets](#)
- ☆ [2M Logistics](#)
- ☆ [Burnett Ranches, LLC](#)
- ☆ [Hope Springs, Inc](#)
- ☆ [H Lancaster Co](#)
- ☆ [Wickers TX](#)
- ☆ [Endozondo, LLC](#)
- ☆ [Patches Back Porch](#)
- ☆ [Arium International, Inc](#)
- ☆ [MC Shave Gear](#)

Click the left and right arrows to view more photos.

Did You Know?

TDA Nursery Floral Licensing Program

prevents the introduction and spread of agricultural pests and diseases in nursery plants, and protects consumers and Texas' agricultural industry against economic losses.

TDA Pesticide Lab

collects pesticide residue data and contributes to a pesticide residue database of commodities sampled from U.S. and international markets.

TDA State Office of Rural Health (SORH)

is dedicated to serving the healthcare needs of rural Texas, SORH works with local healthcare providers and other partners to support access to quality healthcare for rural Texans.



Texas Ag Stats:

- ★ Texas grape growers produced 14,180 tons of grapes from 5,020 bearing acres in 2019.
- ★ Roughly 2,250,000 acres of Texas land is dedicated to growing corn.
- ★ There are over 300 USDA certified organic farms in Texas.
- ★ Texas farmers own almost 350,000 tractors collectively across the state.
- ★ Texas cut flowers generated over \$2 million in 2017.

Recipe of the Month

Honey Whole Grain Pancakes - Nature Nate's Honey

Ingredients:

1 cup milk
1 Tbsp vinegar
2 Tbsp butter, melted
2 Tbsp honey
1 egg
1 cup whole wheat flour
1½ Tsp baking powder
½ Tsp baking soda
½ Tsp salt
Cooking spray, or oil of choice

Directions:

1. In a small bowl or measuring cup, mix milk and vinegar. Let sit for 5 minutes
2. Meanwhile, sift flour, baking powder, baking soda, and salt in a large mixing bowl.

3. In a separate bowl, whisk together butter, honey, and egg until fully incorporated. Add the milk/vinegar mixture, and whisk again. Pour wet ingredients into dry ingredients, and stir just until there are no dry spots. Do not over-mix.

4. Let batter rest 5 minutes. Meanwhile, heat a large skillet or griddle over medium-low heat. After 5 minutes, spray skillet with cooking spray. Using a ¼ cup measure, scoop batter onto skillet, leaving a couple inches between each pancake. Let cook untouched for 2-3 minutes, until the edges are set and small bubbles form on the surface. Flip and cook about 2-3 minutes. Repeat with remaining batter.



5. Serve with your toppings of choice! To store in freezer, allow pancakes to cool completely, and freeze in an air-tight container.

Your Thoughts...

on buying Wild-Caught American shrimp...



AMERICANSHRIMP.COM

Top 10 Reasons to Always Buy Wild-Caught American Shrimp - Wild American Shrimp

Tweet



Jennifer Nicholas Allred

I always buy wild caught Gulf shrimp! White or brown makes no difference to me-it is all DELICIOUS!!

Ovaltene Jones

Always Wild Caught seafood NEVER farm raised 🍷

Brenda Kunco

I do but wild caught American shrimp. I think shrimpers that responsibly fish the gulf should be supported

Only Watson Shrimping

I live in Tennessee and have been buying Texas gulf shrimp for a while now. Nothing better, but it's very hard to get. Only Kroger has it and the meat manager told me that he didn't know if he would have it in the future! 😞



FEBRUARY 2022

Tell Us... will you visit a stock show this season?



@TexasDepartmentofAgriculture



@TexasDeptofAg



@TexasAgriculture

TEXAS AGRICULTURE *Matters!*



TEXAS DEPARTMENT OF AGRICULTURE
COMMISSIONER SID MILLER

Produced by the Office of Communications
Editor, Katlyn Gast

www.TexasAgriculture.gov
(800) TELL-TDA

