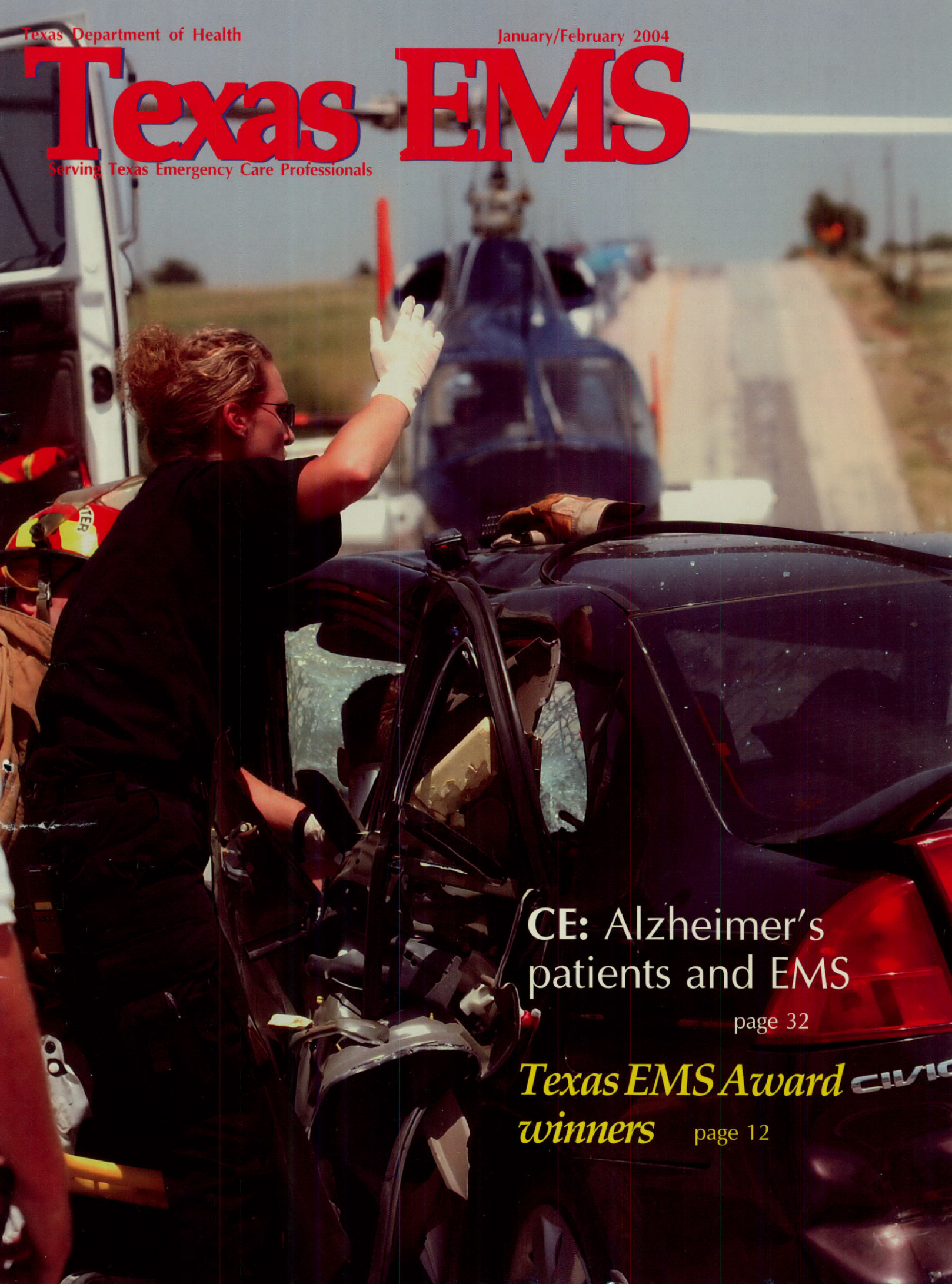


Texas EMS

Serving Texas Emergency Care Professionals



CE: Alzheimer's patients and EMS

page 32

Texas EMS Award winners CIVIC page 12

Texas EMS

M a g a z i n e

\$25 for 2 Years

Your point of contact with the agency that regulates Texas EMS—taking state and national EMS issues and answers to emergency medical services professionals serving in every capacity across Texas.

- New subscription**
 \$25 for 2 years \$45 for 4 years
 Renewal subscription

(Please print or write clearly)

First name _____

Last name _____

Address _____

City _____ State _____

Zip+4 _____ - _____

Area code _____ Phone number _____

- Gift Subscription**
 Fill in gift information above
 and put *your* name below

First name _____

Last name _____

Make check or money order to:
Texas Department of Health

Send subscriptions to:
Texas Department of Health-EMS
 PO Box 149200
 Austin, TX 78714-9200

Amount enclosed \$ _____
 ZZ100 - Fund 008

Order these free materials for your community education programs.

FAX your request to: 512/834-6736

Shipping information:

Contact _____

Organization _____

Shipping Address _____

City/State/Zip _____

Telephone _____

Amount ordered Description

_____ **"Ready Teddy" coloring book.** 16 pages of injury prevention and EMS awareness tips by the Texas EMS mascot. English-(4-61)

_____ **"When Minutes Count—A Citizen's Guide to Medical Emergencies" brochure.** A foldout first aid guide. Can be personalized by the EMS service. (EMS-014)

_____ **"EMS—A System to Save a Life" brochure.** Explains emergency medical services and includes public health region office info. Explains BLS and ALS. (EMS-012)

_____ **"I'm an EMS Friend" sticker.** Ready Teddy in a 2-½ inch, 3-color sticker.

_____ **"EMS Questions and Answers about Citizen Participation" brochure.** Answers questions about how to call, what to do and how the community can help EMS. (EMS-008)

_____ **Concussion cards.** 4 inch X 9 inch card with signs and symptoms of a brain injury. One side English and one side Spanish.

Mail or fax order form to: Bureau of Emergency Management
 Texas Department of Health,
 1100 West 49th Street, Austin, TX 78756
 or Fax to (512) 834-6736

ADDRESS/NAME CHANGE FORM

- Address/Name change for magazine
 Address/Name change for certification
 Address/Name change for both

MAIL OR FAX TO: Bureau of Emergency Management
 Texas Department of Health,
 1100 West 49th Street, Austin, TX
 78756
 FAX (512) 834-6736

New information

Name _____ Phone _____ - _____ - _____

Address _____ City _____ State _____ Zip _____ - _____

Please fill in current information already in our records

Name _____ Phone _____ - _____ - _____

Address _____ City _____ State _____ Zip _____ - _____

FEATURES

12 Texas EMS Awards

Who was the best in EMS in 2003? Turn here for who won the awards and a little information about why they won.

By PENNY WORKMAN

15 GETAC Recap

GETAC wrapped up another successful year with the meetings during the conference. Read what happened, and what's in store for the coming year.

By KATHY PERKINS

20 Local Projects

Eighty projects were approved in this year's funding.

26 2003 EMS Photo Contest

The winners out of the more than 130 different photos entered in the photo contest.

By JAN BRIZENDINE

28 Texas EMS Conference 2003

If you weren't there, you missed a grand ole time in San Antonio. And we only heard of one person falling in the river!

By PENNY WORKMAN

CONTINUING EDUCATION

32 CE: Alzheimer's disease and EMS

Even the most experienced medics might not know the best way to handle an Alzheimer's patient. Learn what to do and earn 1.5 hours of Patient Assessment CE with this article.

By LESLIE TEEL, LP, NREMT-P

Texas EMS

Magazine

DEPARTMENTS

5 From This Side

Kathy Perkins

6 Deaths

7 On Duty

Kelly Harrell

18 Local and Regional News

Penny Workman

24 FAQs: Standards

Linda Reyes

25 FAQs: Education

Eddie Walker

42 Did You Read

Penny Workman

45 Disciplinary Actions

Chris Quiroz, EMT-P and

Anthony Luna

50 Calendar

Nicole Rivers

52 EMS Profile

By Ralph Hendricks, LP

TABLE OF CONTENTS PHOTO: PHOTO BY CYNDI WRIGHT OF THE FAYETTE COUNTY RECORD.



About the cover:
EMS and firefighters are preparing to pry a crash victim from a wrecked vehicle.
Photo by Joe Duty.



Texas Department of Health EMS Offices

Bureau of Emergency Management

www.tdh.state.tx.us/hcqs/ems/regions.htm
1100 West 49th Street
Austin, Texas 78756-3199
(512) 834-6700

North/West Zone

P.O. Box 60968, WTAMU Station
Canyon, Texas 79016
(806) 655-7151

1109 Kemper
Lubbock, Texas 79403
(806) 744-3577

1301 South Bowen Road, Suite 200
Arlington, TX 76013
(817) 264-4500

4309 Jacksboro Hwy, Suite 101
Wichita Falls, Texas 76302
(940) 767-8593

4601 S. First, Suite L
Abilene, TX 79605
(915) 795-5859

2408 S. 37th St.
Temple, Texas 76504-7168
(254) 778-6744

401 E. Franklin, Suite 210
El Paso, Texas 79901
(915) 834-7708

2301 N. Big Spring, Ste. 300
Midland, Texas 79705
(915) 683-9492

622 S. Oakes Street, Suite H
San Angelo, Texas 76903
(325) 659-7854

South/East Zone

5425 Polk Street, Suite J
Houston, Texas 77023
(713) 767-3333

7430 Louis Pasteur
San Antonio, Texas 78229
(210) 949-2050

1233 Agnes
Corpus Christi, Texas 78401
(361) 889-3481

1517 W. Front Street
Tyler, Texas 75702-7854
(903) 533-5370

601 W. Sesame Dr.
Harlingen, Texas 78550
(956) 423-0130

Contributors: Rick Anderson, Donn Barnes, Wayne Dennis, Shawn Hargrove, Warren Hassinger, Ralph Hendricks, Ed Loomis, Anthony Luna, Kathy Perkins, Chris Quiroz, Linda Reyes, Leslie Teel, Terri Vernon, Eddie Walker

EDITORIAL REVIEW BOARD

James Atkins, MD, Dallas, Texas	Don J. Gordon, MD, PhD The University of Texas Health Science Center-San Antonio	Debbie Peterson, MSHP, RRT Texas Department of Health Austin, Texas
Scott Bolleter, EMT-P San Antonio AirLife San Antonio, Texas	Dr. J. Charles Hinds, EMT-P Cypress Creek EMS, Houston	Pauline VanMeurs, BA, EMT-P Austin Community College Austin, Texas
Neil Coker, LP Temple College Temple, Texas	Loretta Jordan, MPA, LP, El Paso FD	Tom Ward, MD
Rod Dennison, EMT-P Temple, Texas	James McGraw, RN, MN, CCRN	Sherrie Wilson Dallas Fire Department Dallas, Texas
Gene Gandy, LP Attorney at Law Albany, Texas	Tarrant County College, Fort Worth	Jim Zukowski, EdD Texas Department of Health Austin, Texas
	Jim Moshinskie, PhD, EMT-P Baylor University	

Texas EMS

M a g a z i n e

January/February 2004
Publications No.

Vol. 25 No. 1
01-10658

A bimonthly publication of TEXAS DEPARTMENT OF HEALTH

EDUARDO J. SANCHEZ, MD, MPH
COMMISSIONER OF HEALTH

NICK CURRY, MD, MPH
EXECUTIVE DEPUTY COMMISSIONER

BEN DELGADO
CHIEF OPERATING OFFICER

RICHARD BAYS
ASSOCIATE COMMISSIONER FOR
CONSUMER HEALTH PROTECTION

BUREAU OF EMERGENCY MANAGEMENT

KATHY PERKINS, BUREAU CHIEF

TERRY BAVOUSETT, ACTING ASSISTANT CHIEF - REGULATION

STEVE JANDA, ASSISTANT CHIEF - SYSTEMS

PROGRAM MANAGERS

KELLY HARRELL PHIL LOCKWOOD
CHRIS QUIROZ GREG WILBURN

Texas EMS Magazine

Kelly D. Harrell EDITOR
Penny Workman ASSOCIATE EDITOR
Jan M. Brizendine ART DIRECTOR
Nicole Rivers EDITORIAL ASSISTANT
Dawn Whitfield PRODUCT ON ASSISTANT

Texas EMS Magazine (ISSN 1063-8202) is published bimonthly by the Texas Department of Health, Bureau of Emergency Management, 1100 W. 49th Street, Austin, TX 78756-3199. The magazine's goals are to help organizations function professionally as EMS providers, to educate individuals so they can perform lifesaving prehospital skills under stressful conditions, and to help the public get into the EMS system when they need it. *Texas EMS Magazine* brings state and national EMS issues and answers to ECAs, EMTs and paramedics serving in every capacity across Texas.

Editor's office: (512) 834-6700, 1100 W. 49th Street, Austin, Texas 78756-3199 or FAX (512) 834-6736.

Subscriptions to *Texas EMS Magazine* are available for \$25 for two years. Sample copies on request. Subscriptions are free to volunteer provider firms. To order a subscription or to request a change of address in a current subscription, write to *Texas EMS Magazine* at the address above or call (512) 834-6700 or FAX (512) 834-6736.

We will accept telephone and mail queries about articles and news items. Manuscript and photograph guidelines available upon request.

Periodicals Postage Paid at Austin, Texas. POSTMASTER: Send address changes to *Texas EMS Magazine*, 1100 W. 49th Street, Austin, Texas 78756-3199.



KATHY PERKINS, CHIEF
BUREAU OF EMERGENCY
MANAGEMENT

Rule changes continue into new year

As we emerge from the holiday season, I hope the new year finds you happy and healthy. The new year finds the Bureau—and GETAC—in the middle of some major, and some minor, rule changes. There are several reasons. First, the Legislature made some changes to laws that require rule changes. Second, all rules undergo a mandatory review every four years, so the Bureau has been looking at every EMS and trauma rule to determine if any can be rewritten to better reflect the changing worlds of EMS and trauma systems. Third, EMS and trauma stakeholders have expressed interest in looking at several of the rules to see if they could be improved.

The problem is that, due to time constraints involved in taking rules to the Board of Health, the Bureau needs to forge ahead now with the rules that need to be changed due to legislative mandates. So we find ourselves in the position of opening some rules to approve necessary legislative changes, knowing that in 2004 we'll again visit the same rules to satisfy the mandatory review and other changes from stakeholders. At the January Board meeting, it is expected that the Board will propose a packet of rules that basically incorporates necessary legislative changes. The packet, which also includes a couple of rules that needed only minor changes, such as 157.1, Purpose, will be posted on our website if approved.

Speaking of changes, so many are happening because of the state agency consolidation that it's hard to keep up. We want you to know that most of what is happening, like the process for the Local Projects Grants, is now out of our control. The process, which was new this year, may change again for next year but we do not know at this point what to expect. Other examples of functions that have left TDH and gone to the Health and Human Services Commission are human resources and information technology.

I want to thank Joe Hamilton and San Jacinto College Central for producing CDs of the National Registry advanced skills examiner training for each of our field offices. (*See page 8 for details.*) State regulations made it difficult for us to upload this important information to our website, so San Jacinto College Central stepped in to help. The CDs are available for loan from the field offices. Thanks to Lee Richardson for posting the information on www.TechProServices.net.

If you went to the conference in San Antonio, you know that it was a great success. We hope to repeat the success in Austin in 2004 and 2005. Along with an education committee drawn from educators and medics statewide, we're already working on the conference program for 2004. Thanks to Texas EMS Foundation for working with us on next year's education.

Participation at the November 22-23 GETAC meetings was excellent (*see GETAC Recap on page 15*). GETAC meets again February 12 and 13, so please consider coming to Austin to make your voice heard! You can also comment by email to us or to any of the GETAC members listed on the website. The dates for the GETAC meetings are listed in the box on page 6. Hope to see you there!

EMS Hall of Honor

The Texas EMS Hall of Honor memorial honors emergency medical services personnel who lost their lives in the line of duty. The plaques hang permanently at the Texas Department of Health in Austin as a tribute to those individuals who made the ultimate sacrifice. Each plaque lists engraved names along with certifications or licensure, and date of death.

Added to the Texas EMS Hall of Honor this year:

James E. Taylor, 28, of Blossom, who was killed January 19, 2003, in an ambulance while responding to a motor vehicle crash. An EMT-I, Taylor worked for the Bonham Fire Department.

Raymond B. Davis, 53, of Lubbock, died of natural causes while on duty at his post on September 18, 2003. A paramedic for 21 years, Davis worked for Lubbock EMS and volunteered for Shallowater Fire Department.



The Lubbock EMS Honor Guard provided a tribute at the Awards Luncheon to those who died in the line of duty.

GETAC Meeting Dates 2004

February 12-13

May 6-7

August 12-13

November 20-21

EMS license plate moves forward

On December 9, the Texas Department of Transportation held public hearings over rule changes regarding specialty license plates. The recently approved emergency medical services license plate will be affected by these new rules. Three Texas certified or licensed EMS personnel, David Luther, Barry Sharp and Donn Barnes, attended the hearing and presented testimony, documents, and a petition containing more than 900 signatures gathered at the Texas EMS conference.

The major question addressed by these three was the design of the plate. The approved design authorized by HB-2971 is considered by those polled to be unacceptable. It is a simple dark blue text on white background design with the text "Emergency Medical Services" printed in red across the bottom.

The Emergency Medical Services Association (EMSAT) and the Texas Emergency Medical Services Foundation (TEMSF) have offered an alternative design including a Star of Life graphic. The organizations have assured TxDOT that a plate with a graphic will be more acceptable and successful. Vehicle Title and Registration Director Jerry Dike assured the speakers that TxDOT would take another look at the design. For more information, write Donn Barnes at donn.barnes@temsf.org.



The plate (at left), suggested by the Texas Department of Transportation (TxDOT), was not a popular choice for those polled at Texas EMS Conference. EMSAT and TEMSF have offered an alternative design (right). TxDOT has promised to look into using that design.

AROUND THE STATE AND NATION EMS NEWS AND RESOURCES

By Kelly Harrell

ECA/EMT applications combined on web

The ECA and EMT initial applications have been combined. You can find the revised application on our website at: www.tdh.state.tx.us/hcqs/ems/filelib.htm#EMS.

Beginning November 1, 2003, students completing an initial ECA course were required to pass the National Registry First Responder exam to become eligible for state certification. The state application and testing process is identical to the EMT processes. View the ECA testing process on our web site at: www.tdh.state.tx.us/hcqs/ems/Stdiproc.htm.

The course completion roster has also been revised for submission of EMT and ECA students completing an initial course. Everyone should now use the revised CCR. Find the form on our website under EMS Education Materials at: www.tdh.state.tx.us/hcqs/ems/filelib.htm#EMS.

Bounty from stolen card delivered to fire station

A Fredericksburg, Virginia, volunteer EMT landed in jail after he allegedly stole a credit card from the wallet of an 80-year-old woman he was transporting from a nursing home to the hospital. Two days later he tried to buy a plasma television online and have it delivered ... to the fire station.

The scheme was discovered when the patient's daughter received a call to verify the purchase.



Stun gun calls raise concerns



With the increasing use of electrical stun guns by law enforcement personnel (Taser is one brand name), Monterey County, California, medics say they are more frequently being asked to evaluate suspects who have been zapped by the guns. The Taser brand gun leaves an inch-long metal cartridge with a barb at one end in the suspect's body. Although the barb does not need to pierce the skin to be effective, it does need to make contact in two places. Medics are complaining that their function is treatment and transport, not to declare someone fit to be arrested and taken to jail. Monterey County's law enforcement officials, on the other hand, say it is policy to call medics only if there has been some kind of struggle or a potential injury that occurred when the subject was struck by a Taser and then fell. Officials say the policy is not to call medics simply for barb removal. In addition, law enforcement officials say that these stun guns are rarely used. At any rate, as the use of these stun guns rises, the issue will probably spread to other locations.

On Duty

Examiner CD available from TDH field offices

Remember the National Registry Coordinator Rollouts that happened last year? San Jacinto College Central produced a National Registry Advanced Skills Examiner Orientation CD of that training. The presentation was conducted by Rob Waggoner of the National Registry and is a factual and procedure-based instructional media. The CD breaks down the examination process by individual skill and is meant to standardize the procedures and actions of skills examiners across the state. The CDs are available for loan to download on your computer from TDH field offices across the state. (See page 2 for field office contact information.) The Rollout is also posted on www.TechProServices.net.

The CD is compatible with CD copying software and hardware and can be viewed on Microsoft Windows or Mac computers.



The future of overdose calls?

Researchers in Britain are



working on a new kind of biosensor that can determine whether a patient's blood contains a certain compound within minutes rather than hours. The information could help medics determine the best treatment.



Hometown Heroes legislation brings death benefits

The U.S. Senate and U.S. House of Representatives recently passed the Hometown Heroes Survivor Benefits Act, extending federal benefits to EMS personnel, public safety officers, firefighters and other first responders who die of heart attack or stroke while on duty. The legislation is awaiting President Bush's signature. The current law allows federal assistance to public safety officers (EMS, fire and police) killed in the line of duty, or those permanently disabled. However, current benefits do not extend to heart attack or stroke victims, even though heart attacks and strokes account for nearly half the deaths every year. Not covered under the new legislation are those public safety personnel who work for non-government agencies.



Toy-related deaths in 2002

For those Christmas toys that remain unbroken, it's interesting to note the toy death statistics from last year. Thirteen toy-related deaths involving children under age 15 were reported to the Consumer Product Safety Commission in 2002. The toys involved in these fatal incidents were as follows:

Reported Toy-Related Deaths Children 0-14 Calendar Year 2002

Type of Toy	Deaths
Riding Toys, Excluding Non-Powered Scooters	4
1 drowning	
3 motor vehicle involvement	
Balloons (choking/asphyxia)	3
Toy Dart and Dart Tip (choking/asphyxia)	2
Toy Balls (choking/airway obstruction)	2
Non-powered Scooter (motor vehicle involvement)	1
Suction Cup from a Toy Eyeball (aspiration of a foreign object)	1
	Total 13

Victims of the 13 fatal incidents ranged in age from 2 to 12 years old. Nine of the fatalities involved male victims.

Choking or Aspiration Deaths : Eight deaths occurred where the child choked on or aspirated a toy. The toys involved in these fatal incidents were three balloons, one toy dart, one dart tip, two toy balls and one suction cup from a toy eyeball. These children ranged in age from 2 to 11 years old.

Head Injury Deaths: Three of the toy-related deaths were the result of head injuries. These deaths involved two tricycles and one riding toy. The ages of the victims ranged from 2 to 12 years. Two of the deaths resulted from a collision with a motor vehicle and one death occurred when a child struck a tree as a result of his riding toy being towed by a motor vehicle.

Deaths Due to Drowning: There was one death due to drowning that involved a tricycle. A 5-year-old male had been riding around the deck of a pool and was found drowned with his tricycle in the pool.

Incidents with an Unspecified Cause of Death: There was one fatality associated with a toy where the incident report does not give a specific cause of death. A 10-year-old female was stuck by a motor vehicle while riding a scooter across a street. Given the nature of the incident, it is likely that the cause of death was some type of blunt force trauma.

SUV causes ambulance crash in Houston

An impatient SUV driver caused an ambulance to crash in December. The Houston Fire Department ambulance was responding to a call with lights



and sirens when an SUV collided with the ambulance. The impact sent the emergency vehicle into the side of a nearby lumber store. Two HFD paramedics and the SUV driver were taken to Memorial Hermann Hospital with minor injuries.



Temple field staff moves to Austin

Due to the bureau reorganization and problems with lease space in Temple, the Temple field staff moved their offices to Austin.

This decision was made because of a number of issues, including:

- 1) The greatest concentration of EMS providers and personnel for this part of Texas are located in and around Austin.
- 2) The current lease on the Texas Department of Health's Public Health Region (PHR) 7 office in Temple is not going to be renewed and TDH regional staff there will soon be re-located to other space. There is room for the EMS field staff at the current Austin offices. So, this provided an opportune time for the Bureau to make this move and ultimately save some monies currently being expended on rent and other costs.

Below is a list of the main services that have been provided by the EMS field staff in Temple and the resulting changes for the counties in Region 7:

Receipt of EMS Personnel Applications (including Coordinator and Instructor applications) - the mailing address for these was changed to Austin recently (instructions are on the applications themselves); the updated applications can be found on our website at www.tdh.state.tx.us/hcqs/ems/scertlic.htm.

Provider Licensure and First Responder Organization Registration Applications - At this time, submit these to the Austin office mailing address.

Education Program - At this time, continue to submit course notifications and continuing education applications to the Austin office mailing address.

Test Scheduling - At this time, continue to schedule tests by following the current process. When the process changes, it will be publicized widely.

Testing - Testing will continue at the PHR-7 office in Temple for the next 3 - 6 months. However, because there may not be space for testing in the new PHR-7 office, we are looking at other possible sites in Temple. We are confident that we will find a suitable site before the PHR-7 office site becomes unavailable. We are also considering expanding central Texas test site options to include Waco, Austin and/or other areas if needed.

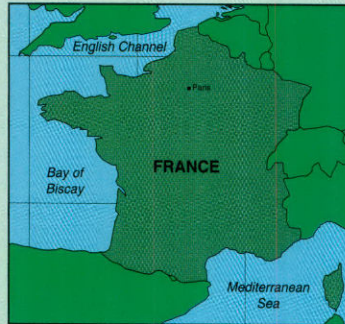
Study examines trauma treatment in California



A study in the Journal of the American College of Surgeons shows that many patients in California who need specialized trauma care are not being treated at designated trauma centers. Researchers looked at 360,743 acute trauma discharges over three years. Overall, only 56 percent of those who met the study criteria for trauma were treated at trauma centers. Of those patients 55 years or older, only 40 percent received treatment at a trauma center. Brain-injured patients went to a trauma center 59 percent of the time. The study also found that among the nearly 30,000 patients who needed but did not reach a trauma center, 59 percent were hospitalized in counties with designated trauma facilities.

Flu hits France hard

Think that we've got a flu epidemic here? While TDH already classifies the flu in Texas as 'widespread,' the highest level, France's cases are reaching the two million mark. Western Europe, including Britain and Spain, are also experiencing infection rates that are up to 20 times higher than in previous years. Infectious disease experts warn that the world could be on course for a flu pandemic this year or in the near future, such as the so-called Spanish flu outbreak of 1918-19. That flu killed millions of people worldwide. In the U.S., the flu kills 36,000 people every year and results in 114,000 hospitalizations. In Texas, since there is no law mandating flu reporting, exact numbers of flu cases remain unknown.



CMS announces inflation rate for 2004

The Centers for Medicare and Medicaid (CMS) announced the ambulance inflation factor update for calendar year 2004 of 2.1 percent. This inflation factor will be applied to both the fee schedule and historical portion of the blended ambulance rates. The blend for 2004 is 60 percent fee schedule, 40 percent historical.

Other changes:

1. CMS clarified that in order to qualify for ALS1 payment, ALS interventions must be administered by ALS crews.
2. A missing comma in the ALS2 definition was added.
3. CMS changed the term "supplier" to "entity" in the emergency definition, which clarifies that the definition applies to both "suppliers" (non-hospital ambulance services) and "providers" (hospital-based ambulance services).
4. CMS clarified that New England County Metropolitan Areas exist only in New England.
5. CMS clarified that the process for determining mileage is the same for ground and air ambulances.

CMS published final rule recently on these subjects. The text is available in pdf format at the following link:

<http://edocket.access.gpo.gov/2003/pdf/03-30152.pdf>. To keep updated on CMS news, go to www.cms.hhs.gov.

On Duty



TDH honors Texas EMS at 2003 Texas EMS Awards luncheon

The EMS organizations and people listed on these pages took top honors at this year's EMS conference. The awards were announced at a luncheon that included a moving tribute by the Lubbock EMS Honor Guard to those who had fallen in the line of duty.



The EMS Educator Award went to Steve Gifford, LP, of Weatherford College.

Public Information/Injury Prevention Award – League City Volunteer EMS, for outstanding achievement in public education or injury prevention in the League City area. Members of LCVEMS participate in several educational programs throughout the community, including education about injury prevention, fire safety, water safety, bicycle safety and calling 9-1-1. Recently, LCVEMS, in conjunction with local law enforcement, started a child seat safety program and LCVEMS is currently working on designation as an official Child Safety Seat Inspection Station for the Texas Children's Hospital Injury Prevention Department and the Texas Safe Riders program. Elements of this program include educating the public about the importance of child seats and seat belts, and assisting people with the correct installation and replacement of the child safety seats. LCVEMS also teaches local teens about the dangers of drinking and driving. In the past year, LCVEMS taught CPR to more than 100 individuals at the annual Saul Balderas Mass CPR class and, as an American Heart Association Community Training Center, LCVEMS taught CPR to more than 500 individuals in their area. LCVEMS donated twelve automatic external defibrillators (AED) to local law enforcement and various city buildings and instructed officers and city employees in CPR and AED use. During the holiday season, LCVEMS also participates in the Blue Santa program, which gives food and toys to underprivileged children in the community.

EMS Educator Award – Steve Gifford, LP, Weatherford College, for leadership and commitment to EMS education in Texas. Having been in EMS since 1985, Gifford

worked his way up through the ranks of EMS to become chair, program director and full-time instructor of Weatherford College EMS Department. Under his guidance, the Weatherford College EMS Department has grown to three full-time faculty with several adjunct faculty. He helped establish dual credit programs with several area high schools and has expanded the program's rural outreach program for ECA classes into several square miles surrounding Weatherford College's district. He also helped establish an EMT program at Weatherford College's Decatur campus. Despite recent health problems, he has continued to work long hours to ensure the quality of Weatherford College EMS Program.

Citizen Award – Chris Knabe, Midland, for his unselfish, heroic, lifesaving actions. On April 20, 2003, Knabe stopped to help a family who was trapped in a burning car. The car, containing a husband, wife and small child, was struck by another car and traveled off the road and began to burn. Knabe used a crow bar from his vehicle to break the passenger window and helped the wife to safety. Unfortunately the fire was too extensive for him to be able to help the father and child and they perished in the vehicle fire. The driver of the other vehicle was arrested for suspected driving under the influence.

EMS Medical Director Award – John H. Ansohn, DO, Grapevine, for his dedication and service to EMS as medical director for several emergency responders in the northern Dallas/Fort Worth area. He serves as the off-line medical director for 16 fire-based EMS agencies, and uses the

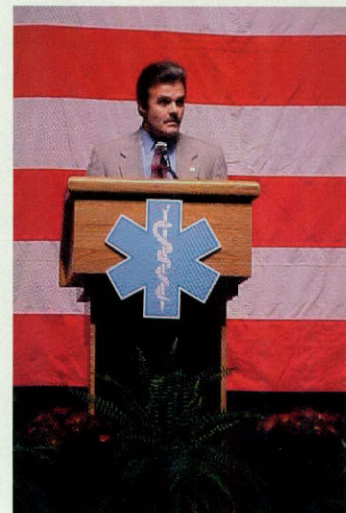
resources of Baylor Regional Medical Center in Grapevine to coordinate medical direction, continuing education and quality management within those EMS agencies. He also ensures that other physicians are included so that EMS agencies can receive the support they need at any hour. Dr. Ansohn works full-time as an emergency department physician, and is active in many committees in local, regional and state EMS communities. He also is a United States Army Reserve Colonel in the Medical Corp, serving as a deputy command surgeon, and through this position he has supported the national implementation of the Army's first automatic external defibrillator program.

Air Medical Service Award – Shannon Air Med 1, San Angelo, for leadership in providing air medical services to its local communities. Serving the mostly rural areas surrounding San Angelo, Shannon Air Med 1 strives to give the greatest level of care while transporting the critically ill and injured to San Angelo's trauma center and other appropriate hospitals. Shannon Air Med personnel educate the community about the service by teaching landing zone development classes, safety classes and injury prevention classes. They also work with staff at the hospitals by having continuing education lectures open to personnel of surrounding hospitals and EMS services and by offering assistance as needed throughout Shannon Medical Center. Shannon Air Med participates in many community educational events, such as the Shattered Dreams program.

First Responder Award – Arlington Fire Department, for assuming a leadership role in EMS by achievement in the areas of patient care, public access, medical control, disaster preparedness, public education and training. For more than 20

years, AFD has required that many positions be certified in EMS at a particular level, allowing AFD personnel to more effectively assist ambulance personnel at medical scenes. However, in 1997, AFD began to focus more closely on the medical portion of its services. Now, using a system approach, AFD works and trains closely with the EMS services in its area to ensure quick and effective response and treatment on-scenes. AFD and the EMS service in Arlington also use common communication protocols and equipment. AFD also implemented a quality improvement system that allows the fire department to compare and discuss the performance of all responding emergency personnel at the scene. AFD includes injury prevention and safety education in its activities by participating in the Fatal Choices/Shattered Dreams programs, CPR and first aid training and the Big Brothers, Big Sisters "Face to Face" mentoring programs.

EMS Private Provider Award – American Medical Response, Wichita Falls, for assuming a leadership role in EMS by achievement in areas of patient care, public access, medical control, disaster preparedness, public education and training. The 56 employees of AMR-Wichita Falls respond to medical assistance requests in Wichita County, providing EMS service to approximately 123,000 people and responding to approximately 1000 calls each year. Having active medical direction allows the personnel of AMR-Wichita Falls to undertake training in the many different aspects of emergency medical response and disaster response, and quality improvement processes allow staff to target training or community needs as necessary. AMR-Wichita Falls is also very involved in safety education, providing car seat safety inspections, CPR and first aid training



The EMS Private Provider Award was accepted by Charles Grady of American Medical Response—Wichita Falls.



The Citizen Award went to Chris Knabe of Midland, Texas.



This room may not look that big but it was ready for 2,400 people to attend the Texas EMS Awards Luncheon.

EMS Person of the Year – Kevin Deramus, LP, Washington County EMS, for leadership and dedication in providing emergency medical service to the citizens of Texas. Deramus is currently the clinical operations manager for Washington County EMS, lead instructor for Washington County EMS Paramedic program and coordinator for the Washington County EMS Special Operations program, which specializes in training for technical rescues and weapons of mass destruction. When a local hospital upgraded to a Level III trauma facility, Deramus was instrumental in coordinating WCEMS's and the hospital's interpretations of major and severe trauma. He also facilitated communications between the hospital staff and WCEMS staff, increasing the personnel's abilities to provide continuous, quality patient care. He also served as a flight paramedic for Scott & White STAT Air for six years and was one of the first National Flight Paramedic Association's Certified Flight Paramedic (FP-C). He is currently working on a bachelor's degree in education.

EMS Administrator Award – Lisa Camp, LP, Friendswood Volunteer EMS, for leadership in quality prehospital patient care and community-wide emergency response. Having worked in EMS for more than 20 years, Camp has always strived for the best in patient care from herself and from her service. Having been raised in a fire/EMS family, Camp has been active in EMS and fire response since she became old enough to join FVEMS and Friendswood Volunteer Fire Department. She worked through the ranks to become the FVEMS administrator

and stroke awareness training. They also participate in the Shattered Dreams programs and as medical backup in sporting and cultural events.

in 1995. She created a successful continuing education program that keeps members informed, providing motivation and confidence for personnel regarding their abilities to provide excellent patient care for the citizens of Friendswood. Leading by example, she works several shifts, attends CE classes and goes to business meetings. She encourages FVEMS to be active with the community and assists in bimonthly free immunization clinics, CPR training, car seat safety inspections and other safety and injury prevention activities. She and three other personnel have been trained as Safety Clowns and perform at schools and community events. She also formed a bike medic group after getting the bicycles and other needed equipment donated to FVEMS.

Outstanding RAC Award – Coastal Bend Regional Advisory Council, for continuing excellence in regional trauma system development. Under the direction of its executive board, the RAC conducted an intensive review of existing policies and resources and developed new processes related to performance standards. The RAC improved communications among its members by setting up and encouraging use of its electronic list server. The RAC enhanced a better regional understanding of the capabilities of the local children's hospital by sponsoring courses aimed at decreasing pediatric fatalities in their area. These courses included a train-the-trainer infant mortality prevention education program and a child abuse and sudden infant death syndrome program. The RAC also sponsored its sixth annual South Texas Trauma Symposium in May. Coastal Bend RAC includes Aransas, Bee, Brooks, Refugio, Live Oak, McMullen, Duval, Jim Wells, San Patricio, Nueces, Kleberg and Kenedy counties.

The EMS Public Provider Award and the EMS Volunteer Provider Award were not given this year, as no service was nominated for these awards.

Nominations for the Texas EMS Awards come from the public, EMS providers and individuals in the EMS community. TDH does not nominate individuals or services for these awards.

Governor's EMS and Trauma Advisory Council meets at conference

The Governor's EMS and Trauma Advisory Council (GETAC) met on November 23rd in San Antonio in conjunction with the annual Texas EMS Conference. GETAC approved the minutes from the August 29th meeting with an amendment (the amended minutes are posted on the Bureau's website) and heard reports from the chair, staff and committee/task force/work group chairs.

Chair Dr. Ed Racht appointed a new task force to address issues of non-emergency transfer/transport (see list in box on page 17). He presented some ideas regarding committee membership/terms and asked the council to discuss the issue later on the agenda. He told the members that at a future meeting, probably May 2004, the council would meet for two days to review progress on implementation of the Strategic Plan. He announced the 2004 meeting dates: February 12-13; May 6-7; August 12-13; and November 20-21 (in conjunction with the 2004 Texas EMS Conference in Austin). Finally, he introduced Jerry Overton, president of the American Ambulance Association who addressed the council briefly about national EMS issues.

GETAC discussed the staff, committee and task force reports. Much time was spent on the issue of standing committee/task force issues (i.e. terms, makeup, charges, etc.). GETAC heard public comment on the reports and other general issues.

Action Items

A motion was made by John Simms and seconded by Dr. Ronny Stewart that GETAC standing committees should have no less than ten and no greater than 20 members, that each committee should have a generic profile as to its purpose, that interested individuals must apply to be appointed to a committee, and that appointments to committees are made jointly by the GETAC chair and the committee chair. The motion passed unanimously.

A motion was made by John Simms and seconded by Mario Segura that GETAC standing committee members should have terms with expiration dates; however, when a committee member's term expires, that individual may be re-appointed. One third of the committee members should expire each year. The motion passed unanimously.

A motion was made by Dr. Ronny Stewart and seconded by Shirley Scholtz that the Air Medical Task Force be established as a GETAC standing committee. The motion failed on a vote of two for and ten against.

A motion was made by Shirley Scholtz and seconded by John Simms that the charge of the Air Medical Task Force be broadened to include identifying all air medical issues in Texas and that the Task Force may bring issues to GETAC. The motion passed unanimously.

A motion was made by Dr. Ed Racht and seconded by F.E. Shaheen to charge the Air Medical Task Force to evaluate issues related to impact on clinical care and

The next meeting date for GETAC is February 13th in Austin. Standing committees and task forces will meet the preceding days.

systems issues with the increasing liability insurance requirements for helicopter landings at some hospitals. The motion passed unanimously.

A motion was made by Mario Segura and seconded by Ronny Stewart that GETAC accept the Injury Prevention plan for Texas. The motion passed unanimously.

Staff, committee, task force and workgroup reports:

Issues addressed by staff included changes in regulatory processes that have occurred (centralization of individual certification/licensure application receipt and processing) and will be occurring in the near future (centralization of provider licensing application receipt and processing; centralized test scheduling; and transfer to Texas On-Line for web-based re-certification/re-licensure); status of rule revisions; update regarding National Registry (NR) testing implementation, including staff findings about Basic testing; staff changes in the EMS/Trauma Registry; TRAC-IT implementation/training; planned 2003 database closure date of April 1, 2004; and plans for an EMS/Trauma Registry Workgroup meeting in mid-January 2004. Questions about these staff reports may be directed to BEM (512/834-6700) or the Bureau of Epidemiology (512/458-7266).

Maxie Bishop reported that the Education Committee discussed the current situation regarding Basic exam locations, including the high "no show" rates; publication of EMS Education program statistics related to NREMT exam results (this was an extensive discussion and the Committee is considering a recommendation to the Bureau to publish such statistics for Basic programs sometime in the next 18 - 24 months, but would like

the Data, Informatics and Research Task Force (DIRTF) to identify factors beyond pass rates alone that should be included); terms and makeup of the committee; and a potential future NREMT requirement for EMS education programs to be nationally accredited.

Pete Wolf reported that the EMS Committee discussed the first responder organization rule, specifically non-registered advanced life support first responders. They would like to see more regulatory authority in this regard. Bureau staff agreed to work with the TDH legal department to see what opportunities are available under current law and report at the next meeting. The committee also discussed this issue of committee makeup and terms and they recommended three-year terms for appointees. However, the prevailing opinion on make-up appeared to be that regional interests are more important than specific entity perspective (i.e. government, private, hospital, fire-based, etc.).

Mario Segura reported that the Injury Prevention Committee has completed the Injury Prevention Plan for Texas way ahead of schedule (due date was October 2004). The plan was sent out for public comment and no changes were recommended. The Committee requested that GETAC vote to approve it. The DIRTF was discussed and the Committee decided that they should meet jointly beginning at the next scheduled meeting.

Dr. Joan Shook reported that the committee discussed recommendations for pediatric-specific guidelines to be utilized by the Regional Advisory Councils. The committee also discussed various definitions of "age-specific" for pediatric patients, as well as the necessity for pe-

diatric-specific education and equipment for EMS providers. The members would like to meet in combination with the Trauma Systems Committee to discuss some of these issues.

Dr. Steve Ellerbe chaired the Medical Directors Committee meeting in Dr. Fred Hagedorn's absence. Dr. Ellerbe reported on the medical director's course, which is expected to be available electronically so that it can be accessible statewide. Dr. Ellerbe also reported that the committee had recommended that the Comprehensive Clinical Management Program (CCMP) move on to a full pilot test (possibly through an RFP process) and that associated first responder organizations could be covered under a provider's CCMP if the FRO had the resources and support of the medical director.

Dr. Ronny Stewart apologized for missing the committee meeting and reported that Jorie Klein presided in his absence. He reported that David Wright of the Centers of Medicare and Medicaid Services gave a briefing on the new Emergency Medical Treatment and Labor Act (EMTALA) regulations that went into effect this month. Committee members discussed the definitions of "bad debt" and "charity care" in Draft Rule 157.131, Designated Trauma Fund and Emergency Medical Services Account. Dr. Stewart proposed to have a two-day meeting in January to further discuss Draft Rule 157.131, as well as Draft Rule 157.125, Requirements for Trauma Facility Designation, and to have a joint meeting with the Pediatric Committee to discuss issues of mutual interest.

Pete Wolf reported that the Rural Task Force continued work on the development of an elected officials' guide (the guide should be concise, include il-

lustrations, and have chapters addressing the following: history, problems, current legislation and future of EMS). The Task Force is also looking for ideas for public service announcements regarding the appropriate utilization of EMS.

Shirley Scholtz reported that the Air Medical Task Force met for approximately 15 minutes and determined that it had completed its original charge. The Task Force voted to request GETAC "standing committee" status so that other statewide aeromedical issues can be addressed by the group (motion did not pass in GETAC).

Dr. Bob Folden reported that the Data, Information and Research Task Force discussed the structure of the task force and what types of studies (randomized control trials) are the most effective and reflect true data. He also discussed the need for "collaboration and funding" to do research. The taskforce charge was also discussed.

Ernie Rodriquez reported that the EMD Resource Center Pilot Workgroup met for the first time. They reviewed the enacting legislation as well as the previous request for proposals (RFP) that was never funded. They will be providing the bureau staff with recommendations for revisions to the RFP before publication. —Kathy Perkins

New task force members to address issues of non-emergency transfer/transport *(task force name yet to be determined)*

FE Shaheen, Co-Chair, Levelland EMS

Wayne Morris, Co-Chair, East Texas Gulf Coast RAC

Britton Waldron, Temple

Ron Haussecker, Municipal Service, Washington County

Keith Brossett, Private Provider, Houston/Beaumont area

Ryan Matthews, Private Provider, Wichita Falls area

Steve Dralle, Private Provider, San Antonio

Liz Herring, Municipal Service, Arlington

Vance Riley, Municipal Service, Victoria

Donna Russell, Private Provider, Harris County area

Bill Aston, Non-Profit Air Medical/ Ground Provider, Harlingen

Dave Williams, Municipal Provider, Austin/Travis County EMS

Dr. Steve Ellerbe, Medical Director, Liberty County

Dave Taylor, Private Provider, Tyler/ East Texas area

Local & Regional EMS News

Is your EMS service mentioned in Local and Regional EMS News?

It needs to be! Are you planning a fundraiser? A training class? A public education program? Do you have new people on board? Have you elected new officers?

Send your news to:
Texas EMS Magazine
Kelly Harrell, Editor
Bureau of Emergency
Management
1100 West 49th Street
Austin, Texas 78756-3199
(512) 834-6700
Fax (512) 834-6736

We welcome letters to the editor on EMS issues, magazine articles or other topics of interest. We print letters to the editor as we have space.

Houston Fire Department EMS meets survivors

At a recent ceremony in Houston, personnel for Houston Fire Department EMS got to meet several individuals they had helped during the previous year. At the ceremony, members of the Houston medical community complimented HFD personnel for their service to the community and pledged continuation of support for HFD. One survivor, Rudolph Rasmus, personally thanked EMS personnel for bringing him back after he had a major heart attack; his heart was shocked 14 times by a defibrillator before it stabilized, and following medical treatment, he returned to a normal life.

SJCC-EMT participates in local English/Spanish CPR clinic

In October, San Jacinto College Central – EMT Education program, in cooperation with Strawberry Clinic and the North Pasadena Community Association, participated in a mass CPR training program. Held at Pasadena Town Square Mall, medical personnel trained the public in CPR and AED use in Spanish and English, issuing American Heart Association and American Red Cross certification cards to participants. Sixty-two English-speaking participants and 35 Spanish-speaking participants were trained. This particular mass CPR training program was

aimed at the predominantly Spanish-speaking population in the north Pasadena area. They are currently planning for next year's event, so contact SJCC-EMT if you are interested in volunteering.

Texas welcomes injured Army medic

Alan Babin, an Army medic from Round Rock, recently returned to Texas. Babin was injured in Iraq in March when he was shot in the abdomen while trying to save a fellow soldier. He has been hospitalized at Walter Reed Army Hospital in Washington, and in November, was moved to Brocke Army Medical Center in San Antonio. He has been awarded a Purple Heart and a Bronze Star for his heroism, and is planning on studying nursing in a few years, after he has recovered from his injuries.

ECEMS goes to extremes for rescue

Edwards County EMS was recently praised by the *Texas Mohair Weekly* for its actions in a difficult rescue/medical call. In October, ECEMS, working with several other providers, moved a heart attack victim from his home on an area ranch near Ker-ville, despite the flooding the area was experiencing. Led by a deputy very familiar with the area highways and water crossings, ECEMS personnel managed

Local & Regional EMS News

Austin-Travis County EMS paramedic training academy's newest graduates. Very top, left to right, Gabe Logan, Ray Migl and Mike Summers, academy instructor. Bottom row, left to right, Traci Carlson, Corey Ricketson, academy instructor; Scott Anderson, Michelle Beckley and Geoff Winslow.



to get the ambulance approximately halfway to the man's house before they came to water too high for them to get through. A Rocksprings VFD two-ton truck, donated by the Texas Forest Service, was called to continue the drive to the man's house. While waiting for the RVFD two-ton truck's arrival, dispatchers called San Antonio AirLife and the Texas Department of Public Safety to request helicopter assistance. The helicopters could not be dispatched due to weather conditions. The RVFD truck, loaded with ECEMS equipment and personnel, reached the patient and moved him to ambulance, which then moved him to a hospital in Kerrville. The pa-

tient has recovered and is now back at home.

SCA medic featured in local newspaper

Southern Cross Ambulance EMT Sam Greer has faithfully served his community for many years. An article in Live Oak County's *The Progress* details how the 81-year-old Greer began working in EMS in 1973 and has been serving communities in Live Oak County ever since. His devotion to service and compassion for his patients has made him well-known within the community. His commitment to community service has been passed on to his daughters, one of whom is a paramedic in Alice.

And – now in his 80s – Greer has recently taken up the hobby of skydiving.

Cadets graduate from A-TCEMS EMS training academy

In December, six EMS cadets graduated from Austin-Travis County EMS Training Academy. Scott Anderson, Geoff Winslow, Ray Migl, Michelle Beckley, Traci Carlson and Gabe Logan are going to work on ambulance crews in the Austin-Travis County area.

**Texas EMS Week,
May 16-22, 2004 and Texas
Trauma Awareness Month,
May 2004**



V.F.D. / EMS

Local Projects grants awarded

This year the Bureau received 92 Local Projects Grant proposals. The 80 projects approved for funding include 29 ambulances, 30 AEDs, ten monitor-defibrillators, 12 educational projects and 11 pieces of communication equipment. Three Regional Advisory Councils and three EMS provider associations were awarded funding. Emphasis was placed on grants that would upgrade the level of service available, such as AEDs to BLS units, reduce response time or improve patient care capabilities at a county level.

Because of the ongoing consolidation of functions under the Health and Human Services Commission, the process for Local Projects Grant proposals may change again for next year. We will make announcements about the process as soon as we know. We anticipate that the RFP will be published electronically. And, as usual, we will mail out postcards just after publication. Questions? Contact Terri Vernon at (512) 834-6700 or e-mail terri.vernon@tdh.state.tx.us.

The awards are listed by award name, city, county, equipment and award amount.

(Photo at left) The City of Lufkin Fire Department was awarded \$25,000 for an ambulance remount.

Alamo Heights Fire/EMS

San Antonio, Bexar
Ambulance, \$35,000

Aransas County Medical Services, Inc.

Rockport, Aransas
Ambulance, \$35,000

Associated Ambulance Authority

Clarendon, Donley
Ambulance, \$35,000

Bailey County EMS

Muleshoe, Bailey
Ambulance, \$35,000

Ballinger Memorial Hospital District

Ballinger, Runnels
Ambulance, \$35,000

Big Country EMS Providers Organization

Abilene, Taylor
Regulators, D-tanks, a trauma bag and radios, \$11,540

Big Spring Fire Department

Big Spring, Howard
ACLS, PHTLS and APLS training, \$3,750

Brownsville Fire Department

Brownsville, Cameron
Intubation manikin, IV arm trainer, a pedi ALS trainer, IV hand, a laryngoscope and regulators, \$4,415

Bryson Volunteer EMS

Bryson, Jack
Ambulance, \$35,000

Chandler Volunteer Fire Department

Chandler, Henderson
Oxygen tanks, regulators, blood pressure cuffs, a stethoscope and trauma bags, \$860

Citizens EMS

Clyde, Callahan
Blades, oxygen tanks, a cardiac lead cable, a combination carrer, a trauma bag and radios, \$1,967

Coastal Bend Regional Advisory Council

Corpus Christi, Nueces
Stretcher, a trauma injury kit, a suction unit, IV arm and a camera, \$7,875

Coleman County Medical Center

Coleman, Coleman
Ambulance, \$35,000

Crosby County/Crosbyton Volunteer EMS

Crosbyton, Crosby
Ambulance, \$35,000

Cross Plains Emergency Medical Service

Cross Plains, Callahan
Stretcher, \$1,500

Faith Community Hospital EMS

Jacksboro, Jack
EMT-B training, \$4,725

Fayette County EMS

La Grange, Fayette
Ambulance, \$35,000

Floydada Emergency Medical Service

Floydada, Floyd
Ambulance, \$35,000

Fredericksburg Emergency Medical Service

Fredericksburg, Gillespie
Suction units, stretcher, pedi boards and stair chair, \$5,580

Frio County EMS
Pearsall, Frio
Ambulance, \$35,000

Fort Hancock EMS
Ft. Hancock, Hudspeth
AED and a stretcher, \$2,648

Galveston Emergency Medical Service
Galveston, Galveston
Stair chair, \$700

Garrett Area Rural Volunteer Fire Department
Ennis, Ellis
Rescue equipment, \$2,235

Granbury/Hood County Emergency Medical Services
Granbury, Hood
Ambulance, \$35,000

Grand Prairie Fire Department
City of Grand Prairie, Dallas
Non-invasive blood pressure kit, \$1,370

Gray Forest Area Volunteer Fire Department
Helotes, Bexar
AED, \$700

Hall County EMS
Memphis, Hall
EMT-B training, \$3,500

Hallsville Volunteer EMS, Inc.
Hallsville, Harrison
Ambulance, \$35,000

Happy EMS
Happy, Swisher
Ambulance, \$35,000

Harris County Emergency Service District
Crosby, Harris
Ambulance remount, \$15,000

Heart of Texas Regional Advisory Council
Waco, McLennan
ACLS, PALS, BTLs, EMT-B and EMT-I training, \$53,487

Highlands Volunteer Fire Department
Highlands, Harris
Ambulance remount, \$22,500

Highway 321 VFD
Dayton, Liberty
AED, \$1,400

Jersey Village Emergency Services
Jersey Village, Harris
Rescue equipment, \$1,562

Kennedale Fire Department,
City of Kennedale, Tarrant
Air conditioner replacement, a stretcher, a stair chair, stretcher hardware, refrigerator hardware and a narcotics vault, \$3,000

Knox County Emergency Medical Services
Knox City, Knox
Ambulance, \$35,000

Lakeside Village Area Volunteer Fire Department
Morgan, Bosque
Radios, \$650

Le Feria Volunteer Fire Department
La Feria, Cameron
Pager and radios, \$1,630

Levelland, City of
Levelland, Hockley
Ambulance, \$35,000.0

Liberty County EMS Inc.
Hull, Liberty
Defibrillator, battery system and radio, \$8,395

Liberty Fire and EMS, City of
Liberty, Liberty
Portable suction unit and pulse oximeter, \$1,450

Limestone Medical Center
Groesbeck, Limestone
Ambulance, \$35,000

Lovelady Volunteer Fire Department
Lovelady, Houston
Pocket computer, equipment bag and AED, \$1,730

Lower Rio Grande Valley Regional Advisory Council on Trauma Services
Harlingen, Cameron
Computer, radios, a power stabilizer, extrication device, a responder kit, a pedi seat, pulse oximeter, a manikin, a tension pneumo trainer, a cricothyrotomy, a mass casualty system, a vest, a projector, backboards, straps, pulse oximeters and cases, \$21,159

Lufkin Fire Department, City of
Lufkin, Angelina
Ambulance remount, \$25,000

Luling Emergency Medical Services
Luling, Caldwell
Ambulance, \$35,000

Magnolia Volunteer Fire Department
Magnolia, Montgomery
D-Tanks, a laryngoscope, oxygen tank bag, a regulator, a v-vac, AED, boards, splints, trauma bags, EMT-B and ECA training, \$6,989

Mansfield Fire Department
Mansfield, Tarrant
Ambulance, \$35,000

Merit Volunteer Fire Department
Merit, Hunt
Pulse oximeter, a traction splint and monitor defibrillator, \$2,053

Mineral Wells/City-County EMS
Mineral Wells, Palo Pinto
Ambulance remount, \$30,500

Missouri City Fire & Rescue Services

Missouri City, Fort Bend
Defibrillator and AED, \$6,250

Motley County Hospital District

Matador, Motley
Defibrillator and a stretcher,
\$7,750

New Caney ISD

New Caney, Montgomery
Manikin starter kit, \$980

North Runnels Hospital EMS

Winters, Runnels
Ambulance, \$35,000

Northwest Rural EMS Association, Inc.

Tomball, Harris
Splints, \$1,768

NTRAC TSA-C, Inc.

Wichita Falls, Wichita
Skill trainer, a casualty kit, a
D-tank, a regulator, a
combitube trainer, backboards,
straps, responder kits and a
GPS, \$23,460

Odessa Fire Department, City of

Odessa, Ector
Intubation bag, a suction unit,
extrication equipment, external
paddle, a 12-lead cable,
backboards, a head
immobilizer, pedi boards,
straps, blood pressure cuffs
and trauma bags, \$8,232

Olton Volunteer Ambulance Association

Olton, Lamb
Ambulance, \$35,000

Ore City Volunteer Fire Department

Ore City, Upshur
window punch, backboards,
extrication device, a basket
stretcher and a stethoscope,
\$1,498

Pilot Point EMS Service

Pilot Point, Denton
Defibrillator, \$6,250

Port Aransas EMS

Port Aransas, Nueces
AED, \$1,500

Red Oak Fire Department

Red Oak, Ellis
Intubation equipment, a
regulator, a suction unit, EMT-
P training, blood pressure
cuffs, a glucose meter and a
radio, \$3,725

Roanoke Fire Department

Roanoke, Denton
Defibrillator, ACLS and BTLs
training, \$7,500

Rural Hill EMS Inc

Hubbard, Hill
Stair chair, radios and a tarp,
\$2,860

San Jacinto County First Responders, Inc.

Point Blank, San Jacinto
AED and a stretcher, \$1,730

San Marcos Hays County EMS

San Marcos, Hays
AED, \$600

Shady Oaks Volunteer Fire Department

Athens, Henderson
Stokes basket and radios,
\$1,200

Sudan Fire Department/EMS

Sudan, Lamb
Adult intubation, manikins, a
cric simulator and a leg
trainer, \$2,307

TechPro Services

Abilene, Taylor
EMT-B training, \$5,000

Texas State Technical College West Texas

Sweetwater, Nolan
AEDs and a charger, \$1,662

The Woodlands Fire Department, Inc.

The Woodlands, Montgomery
Pulse oximeter, \$725

Timpson Volunteer Ambulance Service

Timpson, Shelby
Ambulance, \$35,000

Tri-County Emergency Medical Service, Inc.

Ingleside, San Patricio
Ambulance remount, \$20,000

Uvalde EMS, Inc.

Uvalde, Uvalde
Portable suction unit, a pulse
ox, a v-vac, oxygen
equipment, backboards,
splints, extrication device, a
pedi immobilizer, a stair chair,
a traction splint and
equipment bag, \$5,975

Val Verde Regional Medical Center EMS

Del Rio, Val Verde
Ambulance, \$35,000

West Coke County Emergency Medical Service

Robert Lee, Coke
Radios, \$1,000

West Harris County EMS

Katy, Harris
Rescue trauma case, a drug
case and radios, \$1,020

Westside Volunteer Fire Department - Chandler

Chandler, Henderson
Vehicle stabilizer kit and
rescue equipment, \$3,415

Wheeler County Ambulance Service

Wheeler, Wheeler
Infusion pump, a systematic
kit and a battery, \$1,065

Winkler County EMS

Odessa, Ector
Ambulance, \$35,000

By
Linda Reyes

FAQ *EMS Standards*

Bureau web home page
address: www.tdh.state.tx.us/hcqs/ems

EMS Standards home
page: www.tdh.state.tx.us/hcqs/ems/stdhome.htm

Internet certification veri-
fication now on web site.

Certification verification
phone line:
512/834-6769
Fax number:
512/834-6714
email: emscert@tdh.state.tx.us

Q: *I called the public health region of-
fice in Temple and was told EMS staff no
longer work there. What's going on?*

A: Budget constraints require the
Bureau to continue seeking ways to
cut back on costs. The lease on the
building in Temple expired, so the Bu-
reau's Austin office is making room to
house the Temple employees. You
can contact the central Texas area field
staff by calling (512) 834-6700.

Q: *Your web site shows my application
is incomplete. I faxed my corrected applica-
tion to your office yesterday. What number
can I call to verify you received the fax?*

A: We ask that you not call to check
on your fax. We do our best to provide
a fast turn-around, but reductions in
staff require us to make self-serve op-
tions mandatory. We ask that you
check the web site certification query
page for the corrected deficiency. You
should allow three days before you ex-
pect to see a change in your application
status. If the deficiency is not cleared
by the fourth day, feel free to call us
at (512) 834-6700. Please do not follow
the fax by a mailed copy of the faxed
document.

Q: *I'm mailing
my coordinator re-
newal application
and fee. Application
instructions give the
Austin mailing ad-
dress. Is this correct?*

A: Yes. The
Bureau's Austin
staff is now re-

sponsible for processing coordinator
and instructor applications. We've
made quite a few changes recently
and ask for your patience while we
iron out the wrinkles.

Q: *I failed the state ECA exam this
past summer. Do I have to take the Na-
tional Registry (NR) First Responder exam
as a retest?*

A: No. Any ECA candidate who
started the state exam process before
November 1, 2003, can take the state
ECA retest exam as long as you take
the retest within one year of your
course completion date. Candidates
who started the ECA exam process af-
ter November 1, 2003, must pass the
NR First Responder exam.

Q: *My certificate has expired and I
have to take a recertification course in order
to renew. I have checked with EMS pro-
grams in my area and no one is teaching a
course in the next six months. How can
I satisfy the recertification course
requirement?*

A: Contact a course coordinator
associated with an approved EMS pro-
gram about allowing you to take por-
tions of an initial course. The course
coordinator has the authority to re-
quire you to complete more than the
required number of hours listed for a
recertification course for your level of
certification, but is not allowed to re-
duce the number of required hours.
In addition, you will complete a skills
component where you will show pro-
ficiency in all required skills for your
level of certification.

Policy News: The Bureau has recently
approved Policy 03-K, addressing EMD
Operator Instructor recertification. Also,
Policy 02-E, addressing National Registry
credentialed applicants applying for
Texas certification has been revised. You
can read the policies at our web site:
www.tdh.state.tx.us/hcqs/ems/spolicy.htm

By
Eddie Walker, EMT-P

FAQ *EMS Education*

Q: I received a notice of a CE audit and cannot find records of attending all the CE classes. I did, however, find a two-year CE summary report I sent in. Will that suffice as proof I completed the required number of CE hours?

A: No. According to EMS Rule 157.38, the individual is responsible for maintaining written certifications of successful completions of EMS continuing education courses or educational activities for five years after the dates of completion. These records must document successful completion, specifying the name of the EMS continuing education provider, the title, description, date, location, a description of the content area, the number of contact hours awarded and the organization granting approval. Complete and accurate copies of these shall be timely submitted to the department upon the department's request.

Q: I recently attended a one-day CE session and have a question about what content area a subject should be placed in. Is there a place I can go to and find the information?

A: Yes. In addition to the content areas and hours required in each area for all levels, the Bureau has a breakdown of subjects in each area. That information may be found at: www.tdh.state.tx.us/hcqs/ems/ceareas.htm.

Q: I have access to a number of nursing journals that include continuing education articles. Can I use these articles to

earn CE toward re-certification?

A. Yes, you can. In order to use CE articles toward re-certification certain requirements must be met. These requirements are that the CE articles must:

1. Be pre-approved;
2. Be developed by an approved CE provider;
3. Involve the learner by requiring an active and appropriate response to the materials presented;
4. Must provide a test; and,
5. Must provide a record of completion.

CE articles in health care professional journals meet this criteria, including pre-approval of the CE provider by national accrediting bodies such as the American Nurses Credentialing Center. If you decide to obtain credit using an article from another health care profession's journal, you will need to follow all procedures established by the CE provider, including registering, submitting the post-tests for scoring and paying all required fees. It is your responsibility to retain a copy of the certificate for your records and to assign the credit to an approved content area.

Texas EMS Photo C

Some of the best EMS photos have shown up each year in the Texas EMS Photo Contest. And this year was no exception. More than 130 photos were entered for 2003. The grand prize photo, taken by Wayne Tomblinson of Keene, Texas, shows a little girl being comforted by a medic.

Joe Duty of Decatur, Texas, took the second place photo of a deputy sheriff holding a child after a motor vehicle crash that had four fatalities.

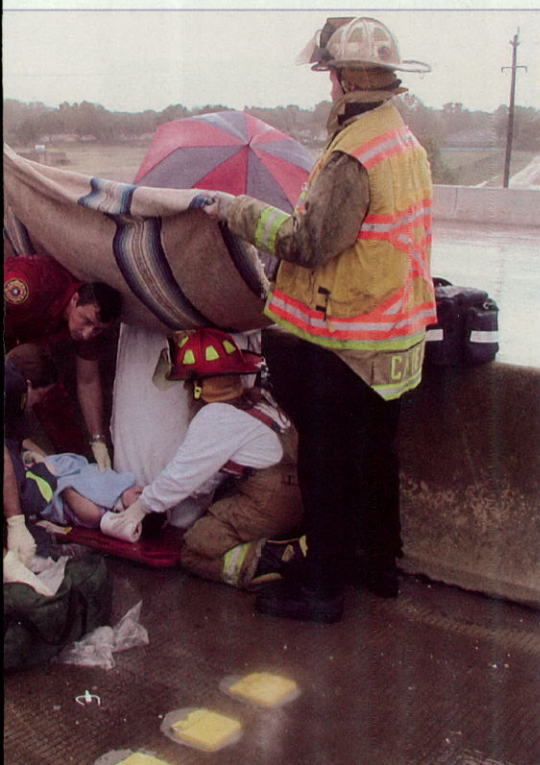
The third place photo, taken by Todd Yates of Clute, Texas, shows two firefighters fighting a fire. And the honorable mention photo was taken by Keith Loyd of Deer Park, Texas, showing two motor vehicle crash victims being treated in the rain.

Contest photos are used by the Bureau of Emergency Management for displays, brochures, *Texas EMS Magazine* and the bureau website.

If you like to take photos, keep your camera loaded with film and be ready to snap the winning photo entry in the 2004 Texas EMS Photo Contest. You can use regular film and send in prints or use a digital camera and send the disk or email the photos. —By Jan Brizendine



Contest



*Bottom, left, Todd Yates' photo won third place, \$75 and a ribbon.
Bottom, center, photographer Keith Loyd, honorable mention, took \$50 and a ribbon.
Above, photographer Joe Duty, second place, won \$100 and a ribbon.
Top, center, photographer Wayne Tomblinson, grand prize, won \$250 and a plaque.*

For information on the Texas EMS photo contest call Jan Brizendine at 512/834-6748 or email jan.brizendine@tdh.state.tx.us. Information will be in *Texas EMS Magazine* or our website at: www.tdh.state.tx.us/hcqs/ems.

The 2003 Texas EMS Conference: education and fun in San Antonio

New location, bigger exhibit hall, more attendees—the Texas EMS Conference 2003 was even bigger and better! Eleven concurrent sessions each hour mean that lots of continuing education was earned, and the topics ranged from communications issues to current legal issues to the patient care application of the latest and greatest in technology. Speaking of technology, the exhibit hall was 134,000 square feet and filled with state-of-the-art prod-

ucts and equipment.

All told, we had just over 2,200 paid attendees in the conference and preconference classes. The larger San Antonio Convention Center gave everyone more space to move in, and the halls weren't as tightly packed. However, the quarter-mile walk from Registration to the farthest classroom gave everyone their exercise for the day! And the days of crowding around the doors of the classroom, trying to get a CE certificate, appear to be over. The CE booklets were a big success again, smoothing out the process of getting CE.

Next year, we'll be in Austin at the Austin Convention Center and the brand-new Hilton. This will shift the conference closer to the restaurant and entertainment areas of Austin. Hope to see you all next year in Austin. —Penny Workman



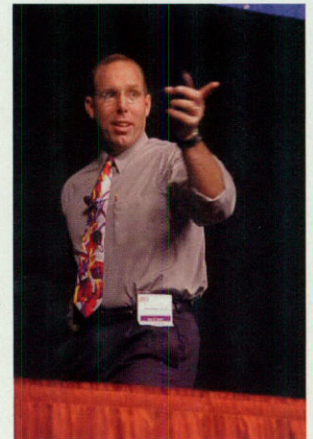
Preconference classes, such as the Grant Writing class (right) and the Powerpoint: How Did He Do That? class, (above) gave conference attendees the opportunity to earn additional CE while learning specific skills.



One of the more striking displays in the exhibit hall was the eleven air medical helicopters. Getting those vehicles moved in and out of the exhibit hall took several hours. Here, CareFlite is on approach for the landing zone at the San Antonio Convention Center.



Attendees hung out between classes in the expansive hallways of the San Antonio Convention Center. The larger convention center gave attendees more space to move in, but sometimes made for longer walking between classes.



The opening session speaker, Scott Bolleter, from San Antonio AirLife, kicked off the conference in style.



The 134,000 square feet of the exhibit hall takes two full days to set up each year.

The Texas EMS Conference 2003 exhibit hall covered 134,000 square feet

The exhibit hall at Texas EMS Conference 2003 looked a little different than it usually does. First, the convention center was the Henry B. Gonzalez Convention Center and second, the city was San Antonio.

One thing that remained constant was that the attendees loved all the excitement of the Texas EMS Conference exhibit hall. If you love to look at helicopters and talk to flight medics, pilots and ground crews, you were in the right place. This year there were eleven helicopters in just about every color and style you could think of, and one helicopter simulator. We owe a big thank you to Bill Waechter with San Antonio AirLife for coordinating the move-in and move-out of all the helicopters. He made a huge job look easy and effortless.

As usual many ambulances, helicopters and EMS equipment fill the exhibit hall.

There was 134,000 square feet of exhibits: ambulances, EMS state-of-the-art equipment, t-shirts, emergency shelters, uniforms, educators and displays. We even had a doctor with a live sonogram display screen showing pregnant women's babies.

According to the evaluations and comments from attendees, the conference was educational and a lot of fun.

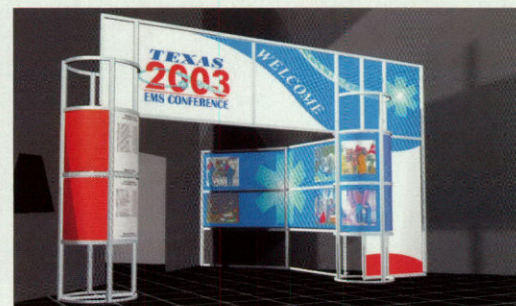
It takes lots of people to have a successful conference: exhibitors, faculty, attendees, volunteers, staff, security, fire marshalls and many who work behind the scenes.

Texas EMS Conference 2004 will be in Austin, Texas, at the Austin Convention Center.

Send an email to Jan Brizendine at Jan.Brizendine@TDH.state.tx.us to request information on being an exhibitor in 2004 or go to the Bureau of Emergency Management website and look for the conference web pages at: www.tdh.state.tx.us/hcqs/ems/emshome.htm and look for 2004 Texas EMS Conference information.

— Jan Brizendine

The entrance to Texas EMS Conference 2003 exhibit hall.





The Henry B. Gonzalez Convention Center had lots of room for all those displays at the 2003 Texas EMS Conference.



People begin lining up to get into the exhibit hall early Sunday afternoon.



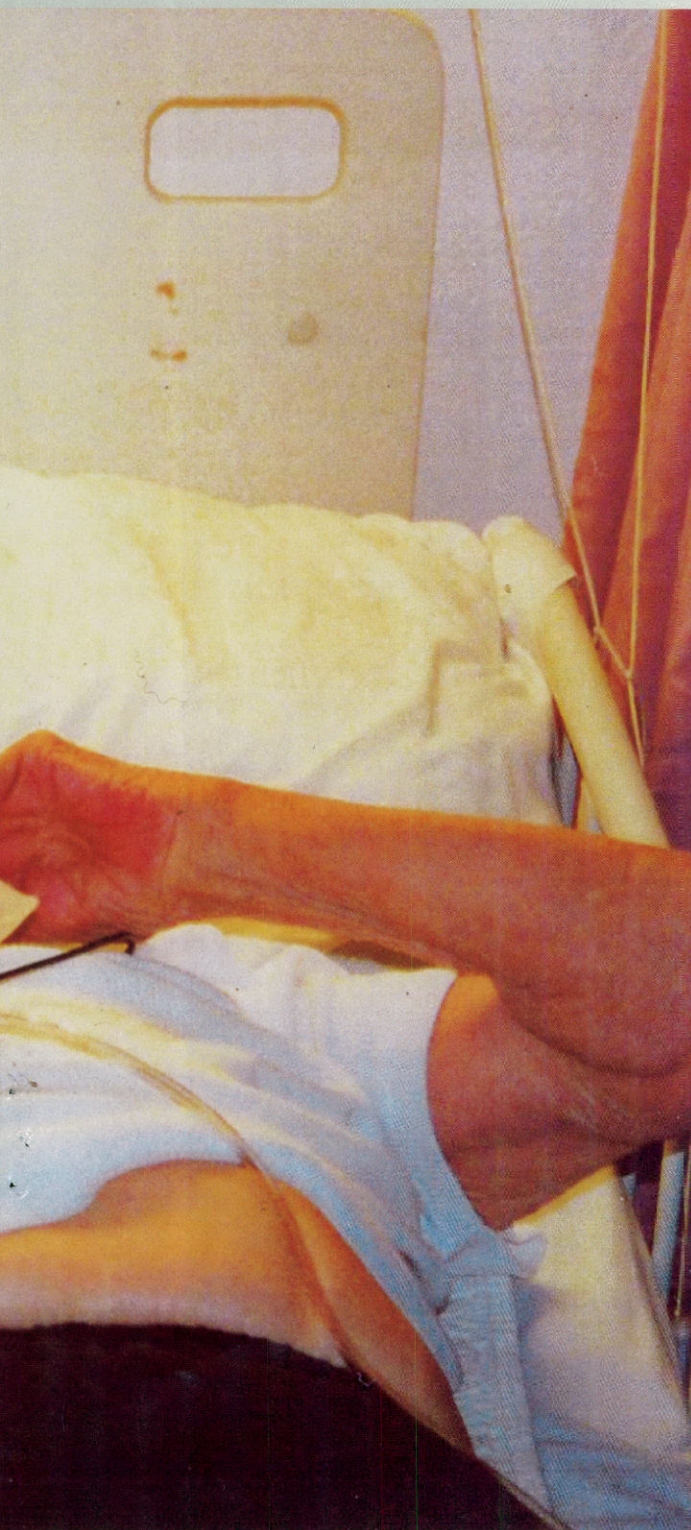
The bright red Memorial Hermann helicopter prepares to land at Texas EMS Conference 2003.

Bill Waechter (in the orange vest), with San Antonio AirLife, coordinated the move-in and move-out of eleven helicopters into the exhibit hall. Here he's working to get the huge AirLife helicopter landed.





Alzheimer's disease



Medic 391 responds to a medical emergency. At the scene, a home health nurse meets them on the porch. She says that this is her first time to see this patient, and all she knows is what is on the sheet of information given to her by the agency. The sheet states that the patient has a history of Alzheimer's and is on medication for hypertension, and her son is her primary caregiver. The son apparently had gone to work, and no one was with the patient when the nurse arrived. The

By Leslie Teel, LP, NREMT-P

ILLUSTRATION PHOTO BY KENNY NAVARRO

and EMS

nurse stated she called 9-1-1 because when she arrived, she found the patient lying in the middle of the living room floor. As the medics enter the house, they see that the patient is a female, approximately 65 years old,

conscious, lying on the floor, incontinent and appearing unable to get up. She appears scared and responds to her name but is unable to communicate what happened or how long she has been there.

There is a walker across the room and a wheelchair in the hallway. There are no notes in the nurse's paperwork on the patient's ambulatory status, communication ability or mental status. When asked if she is hurting anywhere, she says "yes." When asked where she hurts, her response is "yes." Though she is oriented to name, she is unable to answer orientation questions about time or place.

Objectives:

On completion of this article the EMS provider will be able to:

1. Define and describe Alzheimer's disease.
2. Describe the assessment of the patient with dementia.
3. Discuss appropriate communication techniques to use with the Alzheimer's patient.
4. Describe the Safe Return Program from the Alzheimer's Association.
5. List helpful resources for referral to Alzheimer's patients and their families.

Introduction

This scene is becoming more and more common to EMS personnel. As health care providers deal with more and more Alzheimer's disease (AD) patients, many providers don't feel adequately prepared to manage these challenging situations. In some cases, a caregiver is not present and therefore history and other information is very limited. In other cases, the patient is verbal but cannot provide any history of what just happened nor any accurate past medical history. The pa-

tient with altered mental status and, particularly the elderly patient with dementia, is a challenge to EMS providers. Even though the care provider adapts and learns how to deal with one AD patient, the next patient with the same diagnosis may be completely different and require a different approach.

Dementia versus delirium

Many people confuse dementia and delirium. Delirium is an acute confused state that develops over hours or days. The patient is often disoriented and has disorganized thinking. An important factor about delirium is that it is often reversible. Hypoglycemia is one cause of delirium.

Dementia, on the other hand, has a gradual onset, normally months to years. It is a progressive loss of awareness of time and place and usually impairs short-term memory. AD is the most common disease associated with dementia; others include vascular dementias, "little strokes" (multi-infarct dementia) and the later stages of Parkinson's disease. Persons with dementia can also have episodes of delirium due to other factors (such as infection or hypoglycemia).

Demographics

Approximately 4.5 million Americans have AD, and the national vital statistics report lists AD as the eighth leading cause of death. Two out of every 100 people over age 65 have AD. Seven of ten people with AD live at home with 75 percent of their care being provided by family and friends.

The risk of AD increases with age, and one in five persons have AD by age 80. There seems to be a genetically linked predisposition to AD, so the risk is increased for those who have a parent or sibling with the disease. History of head trauma is another risk factor. There is also some question about the combination hormone therapy of estrogen and progesterone being a risk factor. (JAMA 5/28/03)

Description of the disease

Normal neurological changes with aging include minor forgetfulness, slowing of psychomotor abilities and some difficulty with recent memory. AD is often recognized by the patient's persistent and progressively worse struggle with short-term memory. The AD patient has increased difficulty doing things that require planning, decision-making and formulating judgments. Although AD runs a variable course for each patient, it inevitably leads to irreversible mental impairment that eventually destroys the patient's ability to think and function.

Some patients deteriorate rapidly and others more slowly. AD may last from three to 20 years, with the average being ten years. As the disease develops, the patient often becomes fearful and withdraws from social situations. Death is usually from secondary illnesses such as pneumonia or complications from falls.

Course of the disease

AD generally has three stages. The Alzheimer's Disease Education and Referral Center breaks them into

Leslie Teel, LP, started her EMS career while in college when she attended EMT class and caught the EMS bug. She completed her degree in education and went on to complete her paramedic training. Since that time she has taught elementary school, worked in rural and urban EMS systems, did medical work in the Amazon area of Brazil and worked as a paramedic in an ED. In her employment at UT Southwestern, she participates as an EMS geriatric specialist on a grant and teaches EMS classes.

Evaluating the orientation level of an AD patient can be a challenge.

There are ten questions in this quick and easy mental status exam to evaluate the level of dysfunction. They are:

1. Where are you now?
2. Where is this place?
3. What month is it?
4. What year is it?
5. What day of the week is it?
6. How old are you?
7. What month were you born?
8. What year were you born?
9. Who is the president of the US?
10. Who was president before him?

The number of correct answers are calculated and the following scale is used:

Correct answers	Dysfunction
9 - 10	None-mild
3 - 8	Moderate
0 - 2	Severe

early, moderate and late stages. The common symptoms of the early stage include difficulty recalling recent events, short attention span and increasing difficulty in making decisions and doing routine chores. The person may have been a bookkeeper or always balanced the checkbook, but is no longer able to perform these tasks. The AD patient may ask repetitive questions or easily lose his or her way going to familiar places. There is also an increase in stubbornness and a distrust of others.

In the moderate stage, the person with AD may have trouble recognizing familiar people, or may mix up their identities. They may continuously repeat stories or favorite words, statements or motions. It is difficult

for many in this stage to organize their thoughts or to follow logical explanations. They may also have a change in behavior such as losing sexual inhibitions and have no concern for general appearance or hygiene.

In the late stage, the AD patient does not recognize family or themselves. They usually lose control of bladder and bowels. These patients may refuse to eat or forget how to swallow and end up choking. In this stage they need total assistance for all activities of daily living and are often bedridden.

Pathophysiology

Although the exact cause is unknown, AD patients have a large

number of abnormal protein clumps and irregular knots in and around the brain. These are called senile plaques and neurofibrillary tangles, which initially damage areas of the brain that affect the memory. As the disease progresses, it damages other areas associated with intellectual functioning.

Assessment

Accurate patient assessment is a particular challenge for EMS personnel when dealing with an AD patient. The assessment of airway, breathing, circulation and level of consciousness does not change. However, assessing the chief complaint and the medical history may be extremely difficult.

When attempting to obtain a history from the patient, the partner may have to obtain information from the caregiver at the same time. In early to moderate stages, the AD patient will often deny any complaint or injury. The medic may be looking at a four-inch laceration and have the patient deny its existence or any pain. Sometimes the only communication of pain will be non-verbal, such as a grimace when the medic touches a painful area during examination. It is not uncommon for an AD patient to deny any medical history, only to learn from others that the patient has cardiac disease, COPD or other serious medical problems.

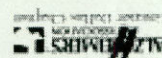
Other things that facilitate assessment include listening closely to the patient and maintaining good eye and verbal contact. Utilize short, simple sentences. If there is a need to repeat something, repeat it exactly the same way, speaking slowly and clearly. Allow the patient time to respond to questions (20 seconds). Keep facial ex-

pressions warm and friendly, as AD patients often tune in to the emotional settings around them. If the medic appears rushed, tense or upset, the AD patient will often react negatively. Also, avoid expressions such as: "Don't you remember?" or "I just told you."

Common medications to watch for with the AD patient are Aricept, Exelon, Reminly and Cognex. Other medications may include anti-depressants, vitamin E, anti-anxiety medications, herbal remedies and sleeping medications.

Management

In managing the AD patient, it is important to minimize distractions.



7610 N. Stemmons, Ste. 600 / Dallas, Texas 75247-4228
214-827-0062 Helpline: 214-540-2400
Safe Return: 800-572-1122
Toll free: 800-515-8201
www.alz.org



SOUTHWESTERN MEDICAL CENTER

HELPFUL TIPS FOR ASSESSING ALZHEIMER'S PATIENTS

1. SPEAK slowly and softly/calmly
2. USE Simple short sentences
3. ALLOW TIME to respond (20 seconds or more)
4. REPEAT questions the same way
5. MAINTAIN eye contact
6. MINIMIZE distractions & noise level
7. AVOID sudden movements
8. KEEP facial expression warm/friendly



The AD patient is usually stressed if the situation warranted calling EMS. Noise and people moving about will add to the stress and confusion for the patient and make assessment more difficult. Some AD patients may become belligerent, aggressive and totally uncooperative in such a setting. When in a shopping mall or other busy location, it maybe helpful to move the patient to a quiet room or to the ambulance to complete the assessment.

Always try to approach the AD patient from the front. If the medic comes up behind the AD patient, he or she may startle the individual. In this event, the patient may not cooperate with the person who startled them. If this occurs, it is best to "tag-team" with a partner, having the partner then ap-

proach the patient to assess the patient.

It is important to reassure the AD patient who will have increased anxiety and confusion in the midst of an emergency situation. Some things that can be done to help reassure the patient include locating hearing aids, glasses or false teeth to take to the hospital. If they have a security object such as a pillow or quilt, allow them to take it with them to the hospital.

When caring for the AD patient, concern for the spouse and/or caregiver should also be considered as well.

Wandering

AD patients are prone to wander. It can happen any time of the day or night, and is a potentially life-threatening behavior. The AD patient may be purposeful in his or her wandering. An example is "John" might be trying to walk to his friend's house to fulfill a promise to fix the sink. The problem is that his friend's house was in another town, and the promise was made 25 years ago. Wandering can also be aimless. Though the AD patient may not wander far, one of the greatest dangers is they may succumb to the environment. If others go looking for them and call out to the person, the AD patient will often not respond. They are often confused and feel lost, and therefore are more anxious than usual.

What should the EMS crew do if they are called about a suspected wandering AD patient? The usual assessment and management principles apply. Look for a "Safe Return" identification device. The Alzheimer's Association has a national, government-funded program that helps identify the person and assist with a safe and

MENTAL STATUS EXAM

1. WHERE are you now? (Name and kind of place)
2. WHERE is this place? (Address)
3. WHAT month is it?
4. WHAT year is it?
5. WHAT day of the week is it?
6. How old are you?
7. WHAT month were you born?
8. WHAT year were you born?
9. WHO is the President of the United States?
10. WHO was President before him?

TOTAL CORRECT ANSWERS	ESTIMATED DEGREE OF BRAIN DYSFUNCTION
9-10	None to mild
3-8	Moderate
1-2	Severe

timely return of wandering patients with dementias. The program provides wallet cards, jewelry and clothing labels with identification and a 24-hour toll-free number to contact. The Safe Return Program has training and additional information about caring for the wandering patient. They also provide local Alzheimer Association chapter support for family and friends.

As our geriatric population continues to increase, the frequency of EMS response to AD emergencies is also expected to increase. Often the patients and their families turn to EMS to not

only help them in a crisis, but for direction and guidance with daily situations. EMS providers need to be prepared for the challenges related to assessing and managing the AD patient, as well as be familiar with references, such as how to contact the Alzheimer's Association, to assist the family.

References:

- www.Alz.org
- www.Alzheimers.org
- www.cdc.gov/nchs
- volume 52, #3 September 2003
- www.MayoClinic.com

"EMS: There When You Need Us"

Texas EMS Week

May 16-22, 2004

Students from Pearland High School participated in the Shattered Dreams Program for EMS Week in 2003. Photo by Sarah Beth Abbott.



CE questions—Alzheimer's disease and EMS

- Which of the following describes a typical characteristic of delirium?
 - Excessively fearful state
 - Is not usually reversible
 - An acute confused state developing over hours to days
 - All of the above
- Conditions causing delirium include:
 - Crohn's disease
 - Diverticulitis
 - Hypoxia
 - Calcium deprivation
- Common conditions associated with dementia include:
 - Renal failure
 - Alzheimer's disease
 - Acute MI
 - Pulmonary fibrosis
- Which of the following describes a typical characteristic of dementia?
 - Impairment of long-term memory
 - Increasing cognitive function
 - Gradual onset
 - An acute confused state
- Normal neurological changes with aging include:
 - Withdrawal from social situations
 - Poor impulse control, poor judgment, distrust
 - Increased difficulty in doing things which require planning, decision-making and judgment
 - Difficulty with recent memory, psychomotor slowing or minor forgetfulness
- Alzheimer's disease affects the cortex of the brain by:
 - Causing infarction of small areas of the brain
 - Causing a stroke
 - Forming abnormal clumps and irregular knots
 - Forming hardening of the arteries
- Signs and symptoms of Alzheimer's disease include which of the following:
 - Difficulty in planning and judgment
 - Personality changes
 - Forgetfulness of recent events
 - All of the above
- Risk factors for Alzheimer's disease include increasing age, genetics and:
 - Poor nutrition
 - Smoking over one pack per day
 - Long-term alcohol use
 - History of previous head trauma
- Which of the following best describes the course for Alzheimer's disease?
 - AD starts gradually, rapidly advancing to severe impairment.
 - AD typically starts quickly then remains stable for years.
 - AD starts slowly but quickly results in death.
 - AD has a variable course for each patient.
- A quick mental status exam might include which of the following:
 - Where are you?
 - Where is this place?
 - What month were you born?
 - All of the above
- Communication with the elderly confused patient can be improved by all of the following EXCEPT:
 - Using short sentences
 - Listening closely and speaking clearly
 - Speaking loudly to a patient
 - Repeating questions the same way each time
- When taking a patient history on a patient suspected of having AD you should:
 - Use thorough, detailed questions
 - Minimize distractions
 - Obtain information from the caregiver
 - B & C
- What is the Safe Return Program?
 - Alert notification system
 - Information and training for care givers
 - National information and photo program for AD patients
 - Aid in safe and timely return of wandering patients with dementia
- The EMS crew is called for a 75-year-old female who is wandering in a shopping mall. The security officer stated he was called because she attempted to leave a store without paying for a dress she picked up. She is confused and does not know her name. She says she needs to go home, but has no ID and does not know her address. Which action would be the most appropriate?
 - Do nothing, because she is probably just senile.
 - Perform a physical and mental status exam and take her to the hospital.
 - Have the security officer call the police because this situation is not an EMS problem.
 - Transport her to the hospital without a physical or mental exam so the patient is not embarrassed.
- EMS is called to the home of a 70-year-old man. On arrival, the man is cursing out his caregiver, yelling and screaming. The caregiver states the patient just spilled boiling water onto his chest and left arm. After checking his LOC & ABC's, redness on the left arm is observed. What would the next step be?
 - Test the patient's memory of what happened.
 - Immediately strip the patient to see what his wounds look like on his chest.
 - Get the stretcher and take him to the hospital.
 - Try to calm him down with a calm voice and warm facial expression.
- A potentially life-threatening behavior of Alzheimer's patients is:
 - Agitation
 - Stress
 - Wandering
 - Anxiety

This answer sheet must be postmarked by February 20, 2004.

CE Answer Sheet *Texas EMS Magazine*

Name _____ SSN _____

Certification Level _____ Expiration Date _____

Organization _____ Work Phone _____
areacode

Address _____ City _____
street

State _____ Zip _____ Home Phone _____
areacode

Note: Due to the cost of processing CE, each answer sheet must be accompanied by a check or money order for \$5, made out to UT Southwestern.

For TDH CE credit, mail your completed answer sheet with a check or money order for \$5 made out to UT Southwestern to:

Debra Cason, RN, MS
EMS Training Coordinator
The University of Texas
Southwestern Medical Center
5323 Harry Hines Boulevard
Dallas, Texas 75390-8890

You will receive your certificate for 1.5 hours of CE about six weeks after the closing date. A grade of 70 percent is required to receive CE credit.

Answer Form

Check the appropriate box for each question. All questions must be answered.

- | | | | | | | | |
|--------------------------------|-----------------------------|-----------------------------|-----------------------------|---------------------------------|-----------------------------|-----------------------------|-----------------------------|
| 1. A. <input type="checkbox"/> | B. <input type="checkbox"/> | C. <input type="checkbox"/> | D. <input type="checkbox"/> | 9. A. <input type="checkbox"/> | B. <input type="checkbox"/> | C. <input type="checkbox"/> | D. <input type="checkbox"/> |
| 2. A. <input type="checkbox"/> | B. <input type="checkbox"/> | C. <input type="checkbox"/> | D. <input type="checkbox"/> | 10. A. <input type="checkbox"/> | B. <input type="checkbox"/> | C. <input type="checkbox"/> | D. <input type="checkbox"/> |
| 3. A. <input type="checkbox"/> | B. <input type="checkbox"/> | C. <input type="checkbox"/> | D. <input type="checkbox"/> | 11. A. <input type="checkbox"/> | B. <input type="checkbox"/> | C. <input type="checkbox"/> | D. <input type="checkbox"/> |
| 4. A. <input type="checkbox"/> | B. <input type="checkbox"/> | C. <input type="checkbox"/> | D. <input type="checkbox"/> | 12. A. <input type="checkbox"/> | B. <input type="checkbox"/> | C. <input type="checkbox"/> | D. <input type="checkbox"/> |
| 5. A. <input type="checkbox"/> | B. <input type="checkbox"/> | C. <input type="checkbox"/> | D. <input type="checkbox"/> | 13. A. <input type="checkbox"/> | B. <input type="checkbox"/> | C. <input type="checkbox"/> | D. <input type="checkbox"/> |
| 6. A. <input type="checkbox"/> | B. <input type="checkbox"/> | C. <input type="checkbox"/> | D. <input type="checkbox"/> | 14. A. <input type="checkbox"/> | B. <input type="checkbox"/> | C. <input type="checkbox"/> | D. <input type="checkbox"/> |
| 7. A. <input type="checkbox"/> | B. <input type="checkbox"/> | C. <input type="checkbox"/> | D. <input type="checkbox"/> | 15. A. <input type="checkbox"/> | B. <input type="checkbox"/> | C. <input type="checkbox"/> | D. <input type="checkbox"/> |
| 8. A. <input type="checkbox"/> | B. <input type="checkbox"/> | C. <input type="checkbox"/> | D. <input type="checkbox"/> | 16. A. <input type="checkbox"/> | B. <input type="checkbox"/> | C. <input type="checkbox"/> | D. <input type="checkbox"/> |

Did you enclose your \$5 check or money order?



Did you read?

A recent study found that people who suffer from chronic stress were more likely to suffer declines in mental abilities, such as those found in Alzheimer's disease. Researchers with the Rush Alzheimer's Disease Center studied individuals' distress proneness, or how likely their responses to stressful events lead to feelings of gloom or anxiety, to see if a lifetime of chronic stress could make people more likely to develop Alzheimer's disease. Memory and oth-

A recent study found that people who suffered from chronic stress were more likely to suffer declines in mental abilities, such as those found in Alzheimer's disease.

er mental abilities were also measured. Five years later, the subjects were re-examined. The people who had scored the highest on the distress proneness test were twice as likely to have developed Alzheimer's as those who scored lowest, and higher scores were associated with faster mental declines. From *The New York Times*, "Patterns: In Aging, Distress Takes Its Toll," by John O'Neil, December 11, 2003.

Many Americans are not ready to respond to another terrorist attack, according to a recent survey by The America Prepared Campaign Inc. The survey asked 1000 people questions about surviving attacks with weapons of mass destruction and found that

only one in four Americans had the basic knowledge needed to survive such attacks. The survey included questions about surviving biological and chemical attacks and "dirty bombs." Eighty-one percent of respondents did not know what to do in response to a chemical attack and 86 percent had not set up either a family communications plan or an emergency kit. Officials encouraged the public to create emergency plans that could be used in response to a terrorist attack or a natural disaster. From *USA TODAY*, "Knowledge is power in case of terrorism," by Kathleen Fackelmann, December 10, 2003.

Even light to moderate drinking might cause tissue loss in the brain, according to a recent American Heart Association study. Some studies have found that light to moderate alcohol consumption lowers the risk of heart disease. But this study found that, for middle age people, there was no decrease in the risk of heart disease and stroke and that there appeared to be a decrease in brain tissue. While heavy alcohol consumption has been linked to brain atrophy and stroke, the effects of low to moderate alcohol consumption are not clearly understood. From *Houston Chronicle*, "Drinking linked to tissue loss in brain," December 5, 2003.

Installing germ-killing ultraviolet lights in central air-conditioning units could prevent millions of cases of illnesses among office workers. A recent study found that the reported number of mucosal, respiratory and overall symptoms for office workers was significantly decreased following

the installation of UV equipment. Ultraviolet germicidal irradiation equipment kills 99 percent of the bacteria, fungi and protozoa commonly found in the drip pans and cooling coils of ventilation systems. The researchers estimated that if these irradiation systems were installed in most offices in the United States and Canada, employees would report approximately four million less cases of work-related medical problems and employers would save from \$5 to \$75 billion a year. The cost of installing the UV equipment in a 1,000-occupant building is approximately \$52,000. From *The New York Times*, "Prevention: Zapping Germs From Office Air," by Eric Nagourney, December 2, 2003.

Your personality might have more to do with whether or not you get your child's cold.

Researchers are pooling evidence that shows that personality, daily stress and social life can affect the human immune system.

Your personality might have more to do with whether or not you get your child's cold. Researchers are pooling evidence that shows that personality, daily stress and social life can affect the human immune system, making some people more prone to catch colds. Researchers at several different institutions have consistently found that happy, extroverted people are less likely to get colds and have milder symptoms when they do get

sick; people who play several different social roles, such as spouse, parent, coworker and friend, were less likely to get colds; and people experiencing serious work- or personal-related stress for as short a time as a month were more likely to catch colds and the longer they dealt with the stress, the more likely they were to get ill. From *USA TODAY*, "In the war on colds, personality counts," by Marilyn Elias, December 2, 2003.

Oklahoma's FirstWatch system correctly identified flu outbreaks in Oklahoma City and Tulsa. The system is used by the Emergency Medical Services Authority and uses computer

Oklahoma's FirstWatch system correctly identified flu outbreaks in Oklahoma City and Tulsa. Used by the Emergency Medical Services Authority, the system notifies the EMS services if they need to increase staffing if there is an influx of medical patients.

software to scan 9-1-1 calls for general information about the emergency patient's medical symptoms. The system then notifies the EMS services if they need to increase staffing if there is an influx of medical patients. Intended as a biosurveillance system to locate symptoms associated with biological weapons such as anthrax, the system has helped health officials watch flu activity across the state. The first flu alert was issued on November 20 for

Did you read?

Did you read?

Oklahoma City, when the system found irregularities in the 9-1-1 call volume for the area. A flu alert was issued for Tulsa on November 22. The FirstWatch system cost approximately \$6,250. Other communities have used the FirstWatch system to detect gas leaks and to alert officials about heat and asthma problems. From *USA TODAY*, "High-tech tool warns of flu outbreaks," December 2, 2003.

Hepatitis C, the most common blood borne infection in the U.S., has a new opponent. A new Internet-

A new Internet-based genetic database has been developed by Los Alamos National Laboratory to help researchers better understand hepatitis C.

based genetic database has been developed by Los Alamos National Laboratory in New Mexico to help researchers better understand hepatitis C. The hepatitis C virus is known for its genetic variability, making research into anti-viral drugs, vaccine and clinical treatment for hepatitis C more complicated. However, since the database began collecting information in 2003, more than 20,000 genetic sequences have been logged into the database, allowing researchers to compare strains and even trace the origin of the patient's viral strain. There are six recognized genotypes of hepatitis C. It is estimated that four million Americans have hepatitis C, and that

number is expected to triple by 2010. Approximately 70 percent of hepatitis C infected individuals have the first type of the virus, but treatments for that strain are effective for only 45 percent of those infected. In the other 30 percent who have the second and third types, approximately 80 percent of them will respond to treatment. From *USA TODAY*, "New database to help fight against hepatitis C," by Leslie Hoffman, December 2, 2003.

Texas EMS Conference 2004 November 21-24, 2004 Austin, Texas

TEXAS EMS CERTIFICATIONS AS OF DECEMBER 15, 2003

ECA	4,958
EMT	26,210
EMT-I	4,002
EMT-P	9,721
LP	5,680
TOTAL	50,571
COORDINATOR	351
INSTRUCTOR	1,932

Disciplinary Actions

THE INFORMATION IN THIS SECTION IS INTENDED TO PROVIDE PUBLIC NOTICE OF DISCIPLINARY ACTION BY THE TEXAS DEPARTMENT OF HEALTH AND THE BUREAU OF EMERGENCY MANAGEMENT AND IS NOT INTENDED TO REFLECT THE SPECIFIC FINDINGS OF EITHER ENTITY.

THIS INFORMATION MAY NOT REFLECT ANY NUMBER OF FACTORS INCLUDING, BUT NOT LIMITED TO, THE SEVERITY OF HARM TO A PATIENT, ANY MITIGATING FACTORS, OR A CERTIFICANT'S DISCIPLINARY HISTORY. THIS LISTING IS NOT INTENDED AS A GUIDE TO THE LEVEL OF SANCTIONS APPROPRIATE FOR A PARTICULAR ACT OF MISCONDUCT.

TO FILE A COMPLAINT REGARDING AN EMS SERVICE OR PERSONNEL, CALL (800) 452-6086.

The Texas Health and Safety Code can be found at www.capitol.state.tx.us/statutes/hstoc.html

All of the Texas Administrative Code can be found at lamb.sos.state.tx.us/tac/

To find EMS-specific information in the Texas Administrative Code, go to www.texas.gov, click on Laws and Criminal Justice, click on Laws, Codes and Statutes, click on Texas Administrative Code, click on TAC Viewer, click on Title 25 Health Services, Part I Texas Department of Health, Chapter 157 Emergency Medical Care.

TDH Index of EMS/Trauma Systems Policies can be found at www.tdh.state.tx.us/hcqs/ems/spolicy.htm

Addington, Dorothy, Arlington, TX. Twenty-four (24) month probated suspension of EMS certification through September 19, 2005 for a misdemeanor conviction, felony conviction and a felony deferred adjudication probation. Pursuant to EMS Rules 25 TAC 157.37 and/or, 25 TAC 157.36(b) and/or, (c).

Advanced Ambulance Services Inc., San Antonio, TX. 24 months probated suspension of EMS provider's license through August 2004 and a \$2,500 administrative penalty. EMS Rules 157.16(d)(1) and (19); and 157.11(l)(13).

Advanced Cardiac and Trauma EMS, Weslaco, TX. \$300 administrative penalty effective August 2003. EMS Rules 157.16(d)(1), (4), (19); 157.11(l)(1), (13).

Alaniz, Rene, Mission, TX. 48 months probated suspension of ECA certification through August 29, 2006, a misdemeanor conviction. EMS Rules 157.37, 157.36(b) and/or (c).

Allen, Keith, Grand Prairie, TX. Decertification of EMT certification effective January 14, 2003. EMS Rules 157.36(b)(11).

AMCARE Medical Services, Inc., San Antonio, TX. 24 months probated suspension of EMS provider's license through August 2004 and a \$1,000 administrative penalty. EMS Rules 157.16(d)(1) and (19); and 157.11(l)(13).

Anderson, Tricia, Tyler, TX. Decertification of EMT certification effective January 14, 2003. EMS Rules 157.36(b)(11).

Anguiano, Frank, Arlington, TX. Twenty-four (24) month probated suspension of EMS certification through September 26, 2005 for a misdemeanor conviction. Pursuant to EMS Rules 25 TAC 157.37, and/or 25 TAC 157.36(b), and/or (c).

Anthony, Tony, Lufkin, TX. Decertification of EMT certification effective January 14, 2003. EMS Rules 157.36(b)(11).

Armstrong, Marc, Austin, TX. Twelve (12) month probated suspension of EMS certification through May 5, 2004 for serving a misdemeanor deferred adjudication probation. Pursuant to EMS Rules 25 TAC 157.37 and/or, 25 TAC 157.36(b) and/or, (c).

Ashlin, Randal, Ruidoso, NM. Decertification of EMT-P certification effective January 14, 2003. EMS Rules 157.36(b)(11).

A-STAT Ambulance Service, Inc., Edinburg, TX. \$4,600 administrative penalty against EMS provider license effective February 17, 2003. EMS Rules 157.16(d)(1), (14) and (19); 157.11(e)(1); 157.11(l)(1) and (13).

Atascocita V.F.D., Atascocita, TX. \$5,000 administrative penalty, 36 month suspension against the EMS provider license all of which is probated through October, 2006. EMS Rules 157.16(d)(1); 157.16(d)(8); 157.16(d)(10); 157.16(d)(12); 157.16(d)(14); 157.16(d)(16); 157.16(d)(19); 157.11 (d)(1); 157.11(i)(1); 157.11(i)(3); 157.11(e)(1); 157.11(l)(1); 157.11(l)(13).

Ballard, Chad, El Paso, TX. Decertification of EMT certification effective January 14, 2003. EMS Rules 157.36(b)(11).

Bassett, Richard, Webster, TX. Decertification of EMT-P certification through June 9, 2004. Chapter 53, Texas Occupations Code, Section 53.021.

Batton, Terry, Flint, TX. Twelve (12) month probated suspension of EMS certification through October 7, 2004 for a misdemeanor conviction. Pursuant to EMS Rules 25 TAC 157.37 and/or, 25 TAC 157.36(b) and/or, (c).

Baumann, Jay, Eules, TX. 12 month probated suspension of the EMT-P certification thru October 2004. EMS Rules 157.36(b)(1), (2), (4), (7), (9), (26), and (28).

Bean, Shawn, Dripping Springs, TX. 24 month probated suspension of EMT certification through December 6, 2005, felony conviction. EMS Rules 157.37, 157.36(b) and/or (c).

Behring, Christopher, San Antonio, TX. Twelve (12) month probated suspension of EMS certification through September 9, 2004 for a misdemeanor conviction. Pursuant to EMS Rules 25 TAC 157.37 and/or, 25 TAC 157.36(b) and/or, (c).

Berry, Lea, Lancaster, TX. 12 month probated suspension of EMS certification through August 07, 2004, misdemeanor conviction/felony deferred adjudication probation. EMS Rules 157.37, 157.36(b) and/or, (c).

Bolton, Jeff, Kyle, TX. 18 months probated suspension of the EMT-P certification

thru March 2004. EMS Rules 157.36(b) (1), (2), (7), (26) and (28).

Bounty EMS, Houston, TX. \$1,000 administrative penalty probated for 6 months thru January 2004. EMS Rules 157.16(d)(15), (17) and (19).

Bourque, Norris, La Porte, TX. Decertification of the EMT certification effective June 30, 2003. EMS Rules 157.36(b)(1); 25 TAC 157.36(b)(2); 25 TAC 157.36(b)(14); 25 TAC 157.36(b)(18); 25 TAC 157.36(b)(28); 25 TAC 157.36(b)(29).

Bowen, Sharon, Gilmer, TX. 12 months suspension of EMT certification thru July 2004. EMS Rules 157.36(b)(1), (2), (8), (26), and (28).

Boyett, Stacy, Palmer, TX. 12 months probated suspension of EMT certification through April 29, 2004, misdemeanor conviction. EMS Rules 157.37, 157.36(b) and/or (c).

Brakefield, Leah, Palestine, TX. Thirty-six (36) month probated suspension of EMS certification through May 5, 2006 for serving a felony deferred adjudication probation. Pursuant to EMS Rules 25 TAC 157.37 and/or, 25 TAC 157.36(b) and/or, (c).

Brewer, Benjamin, Lubbock, TX. 36 month probated suspension of EMS certification through July 11, 2006, misdemeanor conviction. EMS Rules 157.37, 157.36(b) and/or, (c).

Brown, Jack D., Cleburne, TX. 48 months probated suspension of EMT certification through November 3, 2004. EMS Rules 157.37(c)(2)(3)(G).

Bryan, Travis, Pasadena, TX. 24 months probated suspension of EMT certification through March 31, 2005, felony deferred adjudication probation and 4 misdemeanor convictions. EMS Rules 157.37, 157.36(b), and/or (c).

Bryant, Chad, Pearland, TX. 12 month probated suspension of EMS certification through July 03, 2004, misdemeanor conviction. EMS Rules 157.37, and/or 157.36(b) and/or, (c).

Buchanan, Christopher, Midland, TX. 24 months probated suspension of EMT certification through June 4, 2004, misdemeanor convictions. EMS Rules 157.37 and/or, 157.36(b) and/or, (c).

Buck, John, Waco, TX. Downgrade of the EMT-I certification to an EMT certification followed by 6 months probated suspension through March 2004. EMS Rules 25 TAC 157.36(b)(1); 157.36(b)(2); 157.36(b)(3); 157.36(b)(7); 157.36(b)(26); 157.36(b)(28).

Bull, Kenneth, Fort Worth, TX. Suspension of the EMT-P certification through September 2004. EMS Rules 157.36(b)(1), (2), (3), (9) and (28).

Burton, Heather, Palestine, TX. Decertification of EMT-I certification effective January 14, 2003. EMS Rules 157.36(b)(11).

Butera, Jeffrey, Sugar Land, TX. Twenty-four (24) month probated suspension of EMS certification through September 25, 2005 for two (2) misdemeanor convictions. Pursuant to EMS Rules 25 TAC 157.37, and/or 25 TAC 157.36(b), and/or (c).

Byers, Danny, Earth, TX. 60 months probated suspension of EMT-P certification through March 2007. EMS Rules 157.36(b)(1), (2), (23), (25), (26), (28) and (29); 157.37(a)-(c); and the Occupations Code Chap 53.

Caldwell, Arlene, Lawton, TX. Decerti-

fication of EMT certification effective January 14, 2003. EMS Rules 157.36(b)(11).

Caldwell, Kenneth, San Antonio, TX. 48 months probated suspension of EMT certification through August 7, 2006, a felony deferred adjudication. EMS Rules 157.37, 157.36(b) and/or, (c).

Caldwell, Thomas, San Antonio, TX. Twelve (12) month probated suspension of EMS certification through September 9, 2004 for a misdemeanor conviction. Pursuant to EMS Rules 25 TAC 157.37 and/or, 25 TAC 157.36(b) and/or, (c).

Campbell, Connan, Hardin, TX. 24 month probated suspension of the Licensed Paramedic thru November 2005. EMS Rules 157.36(b)(1); 157.36(b)(2); 157.36(b)(7); 157.36(b)(26); and 157.36(b)(28).

Cantu, Melissa, Houston, TX. 12 months probated suspension of the EMT-I certification thru November 2004. EMS Rules 157.36(b)(1); 157.36(b)(2); 157.16(d)(6); 157.36(b)(7); 157.36(b)(26); 157.36(b)(28); and 157.36(b)(29).

Carnacchi, Brandy, McKinney, TX. Decertification of EMT certification effective January 14, 2003. EMS Rules 157.36(b)(11).

Carter, Brad, Richardson, TX. Twelve (12) month probated suspension of EMS certification through May 5, 2004 for a felony conviction. Pursuant to EMS Rules 25 TAC 157.37 and/or, 25 TAC 157.36(b) and/or, (c).

Carter, Caleb, Tyler, TX. Twelve (12) month probated suspension of EMS certification through October 10, 2004 for a misdemeanor conviction. Pursuant to EMS Rules 25 TAC 157.37 and/or, 25 TAC 157.36(b) and/or, (c).

Carvajal, Diana D., Alice, TX. Decertification of EMT-I certification effective January 14, 2003. EMS Rules 157.36(b)(11).

Childress, Jason Allen, Haltom, TX. Decertification of EMT certification effective January 14, 2003. EMS Rules 157.36(b)(11).

Childs, John, Midland, TX. Decertification of EMT certification effective January 14, 2003. EMS Rules 157.36(b)(11).

City of South Houston EMS, Houston, TX. 24 months probated suspension of the EMS provider's license through September 2004. EMS Rules 157.16(d)(1), (4), (6), (14) and (19); 157.11(e)(3); and 157.11(l)(13).

Clark, Waylon, Mertens, TX. Decertification of EMT certification effective January 14, 2003. EMS Rules 157.36(b)(11).

Clay, Derrick G., Killeen, TX. Decertification of EMT certification effective January 14, 2003. EMS Rules 157.36(b)(11).

Cledennen, Darrin, Pampa, TX. 12 month probated suspension of EMS certification through July 03, 2004, misdemeanor conviction. EMS Rules 157.37 and/or, 157.36(b) and/or, (c).

Coffman, David, Normangee, TX. 3 months suspension and 45 months probated suspension of EMT certification through June 30, 2005, a felony conviction. EMS Rules 157.37, 157.36(b) and/or (c).

Covarrubias, Abel, Abilene, TX. 24 months probated suspension of the EMT-P certification thru November 2004. EMS Rules 157.36(b)(1), (2), (7), (26) and (28).

Covey, Christopher, Pottsboro, TX., 12 months probated suspension of the EMT certification through June 2004. EMS Rules 25 TAC 157.36(b)(1); 157.36(b)(2); 157.36(b)(4);

157.36(b)(18); 157.36(b)(26); and 157.36(b)(28).

Cowen, Christopher, Canyon Lake, TX. 24 months probated suspension of EMT certification through October 23, 2004, convictions, misdemeanors and deferred adjudications. EMS Rules 157.37, 157.36(b) and/or (c).

Cox, Steven, Aledo, TX. Twelve (12) month probated suspension of EMS certification through October 10, 2004 for a misdemeanor conviction. Pursuant to EMS Rules 25 TAC 157.37 and/or, 25 TAC 157.36(b) and/or, (c).

Crawford, Dennis, Plainview, TX. 12 month probated suspension of EMT certification through December 6, 2004, misdemeanor deferred adjudication. EMS Rules 157.37, 157.36(b) and/or (c).

Creech, John, Lake Jackson, TX. 18 month probated suspension of the EMSC certification through May 2005. EMS Rules 25 TAC 157.43(m)(1); 157.43(m)(3)(B); 157.43(m)(3)(B); 157.43(m)(3)(E); 157.43(m)(3)(F).

Crowe, Gary, Dale, TX. 48 months probated suspension of EMT certification through November 5, 2005. EMS Rules 157.37(c)(2)(3)(G).

Dallas Fire Dept EMS, Dallas, TX. 12 month probation of a \$25,000 administrative penalty through November 2003. EMS Rules 157.11(m)(13); 157.11(d)(3); 157.19(b); and 157.19(c)(1)(A).

Danbury VFD/EMS, Danbury, TX. 24 months probated suspension of the EMS provider's license through September 2004. EMS Rules 157.16(d)(1), (4) and (14).

Dandois, Pace, Waco, TX. Thirty-six (36) month probated suspension of EMS certification through June 9, 2006 for serving a misdemeanor deferred adjudication probation and having four (4) misdemeanor conviction. Mr. Dandois also had two (2) felony convictions. Pursuant to EMS Rules 25 TAC 157.37 and/or, 25 TAC 157.36(b) and/or, (c).

Davidson, Thomas J. III, Porter, TX. Decertification of EMT-I certification effective January 14, 2003. EMS Rules 157.36(b)(11).

Dial, Ernest, Fort Worth, TX. 6 months probated suspension of the EMT-P license through May 2004. EMS Rules 25 TAC 157.36(b)(1); 157.36(b)(2); 157.36(b)(6); 157.36(b)(7); 157.36(b)(26); 157.36(b)(28).

Dickey, Shane, Azle, TX. 48 months probated suspension of EMT-P certification through October 23, 2006, a felony or deferred adjudication. EMS Rules 157.37 and/or, 157.36(b) and/or, (c).

Dotson, Eric, Houston, TX. Decertification of EMT-P certification effective January 14, 2003. EMS Rules 157.36(b)(11).

Dowell, Alina, Temple, TX. 36 month probated suspension of EMT certification through November 22, 2005, a felony deferred adjudication and misdemeanor conviction. EMS Rules 157.37, 157.36(b) and/or (c).

Dozier, Jerry, Andrews, TX. 48 months probated suspension of EMT-P certification through April 1, 2007. 2 felony convictions. EMS Rules 157.37, 157.36(b) and/or, (c).

Driver, Jeremy, Round Rock, TX. 12 month probated suspension of EMS certification through August 18, 2004, misdemeanor deferred adjudication probation. EMS Rules 157.37, 157.36(b) and/or, (c).

Duncan, David, Grand Saline, TX. 12

months suspension of the EMT-P certification thru June 2004. EMS Rules 25 TAC 157.36(b)(1); 25 TAC 157.36(b)(2); 25 TAC 157.36(b)(8); 25 TAC 157.36(b)(28); 25 TAC 157.36(b)(29).

Elizalde, Edovigen, El Paso, TX. Twenty-four (24) month probated suspension of EMS certification through October 2, 2005 for a misdemeanor conviction. Pursuant to EMS Rules 25 TAC 157.37 and/or, 25 TAC 157.36(b) and/or, (c).

Elliott, Charles, Stephenville, TX. 12 months suspension of EMT certification thru August 2004. EMS Rules 157.36(b)(1), (2), (13), (26), (28).

Enos, Patrick, Center, TX. Decertification of EMT certification effective January 17, 2003. EMS Rules 157.36(b)(11).

Escamilla, Daniel, Corpus Christi, TX. Forty-eight (48) month probated suspension of EMS certification through September 16, 2007 for two (2) misdemeanor convictions and a misdemeanor deferred adjudication probation. Pursuant to EMS Rules 25 TAC 157.37 and/or, 25 TAC 157.36(b) and/or, (c).

Express Care Ambulance, Houston, TX, \$7,000 administrative penalty effective July 2003. EMS Rules 25 TAC 157.16(d)(1); 25 TAC 157.16(d)(17); 25 TAC 157.16(d)(19); 25 TAC 157.11(i)(1)(K); and 25 TAC 157.11(i)(1)(M); and 25 TAC 157.11(i)(3)(B); and 25 TAC 157.11(i)(3)(C); 25 TAC 157.11(i)(4)(A); and 25 TAC 157.11(l)(13).

Fairchild, Brian, Sulphur Springs, TX. 24 month probated suspension of EMT certification through July 1, 2004, misdemeanor convictions and a felony-deferred adjudication. EMS Rules 157.37, 157.36(b) and/or (c).

Farmer, David, Weatherford, TX. Decertification of EMT certification through April 3, 2004. EMS Rules 157.36(b)(1), (2), (4), (7), (9), (26) and (28).

Feist, John, Brady, TX. 12 months probated suspension of EMT certification through April 14, 2004, misdemeanor conviction. EMS Rules 157.37, 157.36(b), and/or (c).

Ferguson, Daniel, Gilmer, TX. 36-month probated suspension of the EMT-P certification through September 2006. EMS Rules 25 TAC 157.36(b)(1); 157.36(b)(2); 157.36(b)(19); 157.36(b)(26); 157.36(b)(27); 157.36(b)(28); 157.36(b)(29).

Finnegan Kimberly, Pointblank, TX. 12 month probated suspension of the EMT certification through October 2004. EMS Rules 25 TAC 157.36(b)(1); 157.36(b)(2); 157.36(b)(15); 157.36(b)(18); 157.36(b)(28).

Fitzhugh, Robert, Hewitt, TX. Decertification of EMT certification effective January 27, 2003. EMS Rules 157.36(b)(1), (2), (6), (23), (26), (28) and (29).

Florence, Gertrude, Leaky, TX. Suspension of EMT certification thru September 2004 due to a CE Audit. EMS Rules 157.36(b)(1), (2), (21) and (28).

Floyd, Duke, Mart, TX. 12 month probated suspension of the EMT-I certification through September 2004. EMS Rules 25 TAC 157.36(b)(1); 157.36(b)(2); 157.36(b)(4); 157.36(b)(10); 157.36(b)(26); 157.36(b)(28); 157.36(b)(29).

Floyd, Michael, Forney, TX. Decertification of EMT certification effective July 25, 2003. EMS Rules 157.36(b)(1), (2), (13), (18), (26), (28), and (29).

Ford, Jerald, Hillsboro, TX. Twenty-four

(24) month probated suspension of EMS certification through June 30, 2005 for a misdemeanor conviction. Pursuant to EMS Rules 25 TAC 157.37 and/or, 25 TAC 157.36(b) and/or, (c).

Foster, Chad, Shreveport, LA. Twelve (12) month probated suspension of EMS certification through November 5, 2004 for a misdemeanor conviction. Pursuant to EMS Rules 25 TAC 157.37, and/or 25 TAC 157.36(b), and/or (c).

Galvan, Martin, Jr., Rio Grande, TX. 48 months probated suspension of ECA certification through October 12, 2004. EMS Rules 157.37(c)(2)(3)(G).

Garcia, Edward, San Angelo, TX. 24 months probated suspension of EMT certification through July 1, 2004, misdemeanor conviction and felony deferred adjudication. EMS Rules 157.37 and/or, 157.36(b) and/or, (c).

Garner, John, Burleson, TX. Twelve (12) month suspension followed by a thirty-six (36) month probated suspension of EMS certification through June 3, 2007 for two (2) misdemeanor convictions. Pursuant to EMS Rules 25 TAC 157.37 and/or, 25 TAC 157.36(b) and/or, (c).

Garza, Bart, Edinburg, TX. 42 months probated suspension of EMT-I certification through April 12, 2004. EMS Rules 157.37(c)(2)(3)(G).

Gilbert, Kerry, Harlingen, TX. 24 month probated suspension of EMS certification through August 18, 2005, felony deferred adjudication probation/misdemeanor conviction. EMS Rules 157.37, 157.36(b) and/or, (c).

Gomez, Juan, Seminole, TX. 12 month probated suspension of EMS certification through July 03, 2004, misdemeanor deferred adjudication probation. EMS Rules 157.37 and/or, 157.36(b) and/or, (c).

Gonzalez, Daniel, LaJoya, TX. Decertification of the ECA certification effective June 2, 2003. EMS Rules 25 TAC 157.36(b)(1); 157.36(b)(2); 157.36(b)(15); 157.36(b)(21); and 157.36(b)(28).

Gonzalez, Donna, Princeton, TX. 48 months probated suspension of EMT-P license through July 2007. EMS Rules 157.36(b)(1), (2), (26), (27) and (28).

Gonzalez, Rolando, Rio Grande City, TX. 36 months probated suspension of EMT certification through August 22, 2004. EMS Rules 157.37(c)(2)(3)(G).

Grabs, Teresa, Valley Mills, TX. 108 months probated suspension of LP through September 26, 2010. EMS Rules 157.37(c)(2)(3)(G).

Grace, Jonathan, Madisonville, TX. Twelve (12) month probated suspension of EMS certification through September 9, 2004 for a misdemeanor conviction. Pursuant to EMS Rules 25 TAC 157.37 and/or, 25 TAC 157.36(b) and/or, (c).

Gray, Javiya, Houston, TX. 60 month probated suspension of EMT certification through December 17, 2007, felony deferred adjudication. EMS Rules 157.37, 157.36(b) and/or (c).

Grimm, Justin, Webster, TX. Decertification of EMT certification effective July 15, 2003. Chapter 53, Texas Occupations Code, Section 53.021.

Groves, Brent, Lake Dallas, TX. Forty-eight (48) month probated suspension of EMS certification through May 5, 2007 for serving a

felony deferred adjudication probation. Pursuant to of EMS Rules 25 TAC 157.37, and/or 25 TAC 157.36(b), and/or (c).

Gryder, Hollye, San Angelo, TX. Twelve (12) month probated suspension of EMS certification through May 27, 2004 for a misdemeanor conviction. Pursuant to EMS Rules 25 TAC 157.37 and/or, 25 TAC 157.36(b) and/or, (c).

Gutierrez, Jose, Amarillo, TX. 12 month probated suspension of EMS certification through July 03, 2004, a misdemeanor conviction. EMS Rules 157.37 and/or 157.36(b) and/or, (c).

Gutierrez, Rebecca, Bruni, TX. Twelve (12) month probated suspension of EMS certification through May 5, 2004 for a misdemeanor conviction. Pursuant to EMS Rules 25 TAC 157.37 and/or, 25 TAC 157.36(b) and/or, (c).

Hamilton, Randy, Texas City, TX. Twelve (12) month probated suspension of EMS certification through September 02, 2004 for two (2) misdemeanor convictions. Pursuant to EMS Rules 25 TAC 157.37 and/or, 25 TAC 157.36(b) and/or, (c).

Hansen Jr., Richard Allen, El Paso, TX. Suspension of EMT-I certification thru August 2004 due to a CE Audit. EMS Rules 157.36(b)(1), (2), (21) and (28).

Harris, Kevin L., McAllen, TX. 4 years probated suspension of EMT certification through July 5, 2004. EMS Rules 157.44(c)(2)(B)(vii).

Hartley, Sherman, Bay City, TX. 56 months probated suspension of EMT certification through July 5, 2006. EMS Rules 157.37(c)(2)(3)(G).

Henenberg, Rose, Houston, TX. Decertification of EMT certification effective January 20, 2003. EMS Rules 157.36(b)(11).

Herrera, Leon, Abilene, TX. 24 months probated suspension of EMT certification through October 15, 2004, misdemeanor convictions. EMS Rules 157.37, 157.36(b) and/or (c).

Hill, Debbie, Huntsville, TX. Decertification of EMT certification effective January 20, 2003. EMS Rules 157.36(b)(11).

Hiltbrunner, Lois, Shamrock, TX. Forty Eight (48) month probated suspension of EMS certification through September 30, 2007 for a felony deferred adjudication probation. Pursuant to EMS Rules 25 TAC 157.37 and/or, 25 TAC 157.36(b) and/or, (c).

Hinson, Larry, Jasper, TX. Decertification of the EMT-P certification effective June 2, 2003. EMS Rules 25 TAC 157.36(b)(1); 157.36(b)(2); 157.36(b)(19); 157.36(b)(26); 157.36(b)(27); 157.36(b)(28); and 157.36(b)(29).

Holley, Lela, Dayton, TX. 12 months probated suspension of EMT certification through March 2004. EMS Rules 157.36(b)(1), (2), (4), (13), (26), (28) and (29).

Holt, John, Talco, TX. Twenty-four (24) month probated suspension of EMS certification through April 29, 2005 for serving 2 misdemeanor deferred adjudication probation and a felony deferred adjudication probation. Pursuant to EMS Rules 25 TAC 157.37 and/or, 25 TAC 157.36(b) and/or, (c).

Hudson, Elvie, Rogers, TX. 12 months probated suspension of EMT certification through April 22, 2004, misdemeanor deferred adjudication probation. EMS Rules 157.37, 157.36(b), and/or (c).

Iselt, Tanya, Marshall, TX. Decertification of EMT certification effective January 20, 2003. EMS Rules 157.36(b)(11).

Jackson, Michael, Houston, TX. 48 months probated suspension of EMT certification through March 7, 2006, a felony conviction. EMS Rules 157.37, 157.36(b) and/or (c).

Jaramillo, Hector, El Paso, TX. 12 months suspension of EMT-P certification thru August 2004. EMS Rules 157.36(b)(1), (2), (3), (4), (28).

Jennings, Amanda, Huntsville, TX. Twelve (12) month probated suspension of EMS certification through April 29, 2004, misdemeanor deferred adjudication probation. EMS Rules 157.37, 157.36(b) and/or, (c).

Jimenez, Amanda, Spring, TX. 24 month probated suspension of EMT certification through July 8, 2004, a felony conviction. EMS Rules 157.37, 157.36(b) and/or, (c).

Jorge, Manuel, Fort Worth, TX. 12 month probated suspension of EMS certification through July 03, 2004, misdemeanor conviction. EMS Rules 157.37, and/or 157.36(b), and/or (c).

Julian, Robyn, League City, TX. 24 month probated suspension of EMT certification through November 21, 2004, felony deferred adjudication. EMS Rules 157.37, 157.36(b) and/or, (c).

Kellar, Shanna, Terrell, TX. 4 years probated suspension of EMT certification through June 30, 2004. EMS Rules 157.44(c)(2)(B)(vii).

Key, Jordan, Waco, TX. 12 month probated suspension of EMS certification through August 15, 2004, misdemeanor deferred adjudication probation. EMS Rules 157.37, 157.36(b) and/or, (c).

Klassen, Charles, Baytown, TX. Decertification of the EMT-P certification effective May 2, 2003. EMS Rules 25 TAC 157.36(b)(1); 157.36(b)(2); 157.36(b)(15); 157.36(b)(18); 157.36(b)(26); 157.36(b)(28); and 157.36(b)(29).

Lawton, Ronald, Webster, TX. 24 months probated suspension of EMT certification through October 7, 2004, misdemeanor and felony convictions. EMS Rules 157.37, 157.36(b) and/or, (c).

Layton IV, Charles, Troy, TX. 24 month probated suspension of the EMT certification through September 2005. EMS Rules 25 TAC 157.36(b)(1); 157.36(b)(2); 157.36(b)(6); 157.36(b)(7); 157.36(b)(26); 157.36(b)(28); 157.36(b)(29).

Leal, Victor John, San Antonio, TX. 24 months probated suspension of EMT certification through July 2004. EMS Rules 157.36(b)(1); 157.36(b)(2); 157.36(b)(21); 157.36(b)(28).

Lloyd, Keith, Austin, TX. 12 months probated suspension of EMT certification through April 29, 2004, misdemeanor conviction. EMS Rules 157.37, 157.36(b), and/or (c).

Lyon, Austin, Lubbock, TX. 12 month probated suspension of EMS certification through November 5, 2004 for a misdemeanor conviction. Pursuant to EMS Rules 25 TAC 157.37 and/or, 25 TAC 157.36(b) and/or, (c).

Manges, Cory, Grand Prairie, TX. 15 month probated suspension of EMS certification through August 5, 2004 for serving a misdemeanor deferred adjudication probation. Pursuant to EMS Rules 25 TAC 157.37 and/or, 25 TAC 157.36(b) and/or, (c).

Martinez, Oscar, Lindale, TX. 48-month

probated suspension of the EMT-P certification through September 2007. EMS Rules 25 TAC 157.36(b)(1); 157.36(b)(2); 157.36(b)(19); 157.36(b)(26); 157.36(b)(27); 157.36(b)(28); 157.36(b)(29).

Mart EMS, Mart, TX. \$4,000 administrative penalty probated for 12 months through September 2004. EMS Rules 25 TAC 157.16(d)(1); 157.16(d)(14); 157.16(d)(19); 157.11(e)(1); 157.11(l)(1); 157.11(l)(13).

Mattick, Lyle, Boerne, TX. Twelve (12) month probated suspension of EMS certification through October 7, 2004 for a misdemeanor or conviction. Pursuant to EMS Rules 25 TAC 157.37, and/or 25 TAC 157.36(b), and/or (c).

Maurer, Garrison, Canyon Lake, TX. 48 months probated suspension of EMT certification through January 3, 2006. EMS Rules 157.37(c)(2)(3)(G).

MacDonald, Daniel, Jacksboro, TX. Twenty-four (24) month probated suspension of EMS certification through September 02, 2005 for two (2) misdemeanor convictions and one (1) misdemeanor probation revocation. Pursuant to EMS Rules 25 TAC 157.37 and/or, 25 TAC 157.36(b) and/or, (c).

McEntire, Jeremmy, Richardson, TX. 24 months probated suspension of the EMT certification thru November 2004. EMS Rules 157.36(g)(5).

McKinney, Jody, Albernathy, TX. 24 month probated suspension of EMS certification through July 11, 2005, felony deferred adjudication probation. EMS Rules 157.37, 157.36(b) and/or, (c).

McLeod, James, Burleson, TX. 43 months probated suspension of EMT certification through January 10, 2006, a misdemeanor conviction. EMS Rules 157.37 and/or, 157.36(b) and/or, (c).

Mercury EMS, Corpus Christi, TX. \$41,800 administrative penalty against the EMS provider license of which \$37,102 is probated for a 12 month period through October 2004. EMS Rules 25 TAC 157.16(d)(1); 157.16(d)(14); 157.16(d)(17); 157.16(d)(19); 157.11 (d)(1); 157.11(i)(1); 157.11(i)(3) 157.11(e)(1); 157.11(l)(1); 157.11(l)(13).

Med First Ambulance Service, Cedar Hill, TX. Revocation of EMS providers license effective July 28, 2003. EMS Rules 157.16(d)(1), (12), (19); 157.11(l)(14), (15)(C)(iii).

Medical Ambulance Service, Inc., Houston, TX. \$1,000 administrative penalty effective May 29, 2003. EMS Rules 25 TAC 157.16(d)(1); 157.16(d)(19); 157.11(l)(13); and 157.11(l)(15).

Medlife Ambulance Service, Houston, TX. Revocation of the EMS provider license and a \$74,000 administrative penalty effective June 2, 2003. EMS Rules 25 TAC 157.16(d)(1); 25 TAC 157.16(d)(19); and 25 TAC 157.11(l)(13).

Med-Tech Ambulance Service, Inc., Houston, TX. \$500 administrative penalty effective May 8, 2003. EMS Rules 157.16(d)(1), (14) and (19); 157.11(e)(1); 157.11(l)(1) and (13).

MedXpress EMS, Kingwood, TX. \$1,000 administrative penalty and a 12 month probated suspension of the EMS provider license through September 2004. EMS Rules 25 TAC 157.16(d)(1); 157.16(d)(14); 157.16(d)(19); 157.11(e)(1); 157.11(l)(1); 157.11(l)(13).

Mettham, Andrew, Amarillo, TX. 24 months probated suspension of EMT certification through May 28, 2004, a felony deferred adjudication. EMS Rules 157.37, 157.36(b) and/or (c).

Millican, Kelly, Cedar Hill, TX. 18 month probated suspension of EMSC certification through May 2004. EMS Rules 157.43(m)(3)(J) and (K).

Mitchell, David, Port Arthur, TX. 6 months probated suspension of EMT-P certification through January 2004. EMS Rules 157.36(b)(1), (2), (3) and (28).

Mitchell, Zane, Alvarado, TX. 6 months actual suspension followed by 49 months probated suspension of EMT-P certification through September 8, 2006, a misdemeanor/felony or conviction. EMS Rules 157.37 and/or, 157.36(b) and/or, (c).

Momentum EMS, Houston, Tx., \$3,000 administrative penalty against the EMS provider license effective October 22, 2003. EMS Rules 25 TAC 157.16(d)(1); 25 TAC 157.16(d)(15); 25 TAC 157.16(d)(17); 25 TAC 157.16(d)(19); 25 TAC 57.11(l) (13); and Texas Civil Statutes, Article 6701h, Article IV, entitled "Proof of Financial Responsibility for the Future", and more specifically, Sections 18, 19 and/or 21.

Montgomery, Rebecca, Huntsville, TX. Twelve (12) month probated suspension of EMS certification through April 29, 2004 for serving a felony deferred adjudication probation and a misdemeanor deferred adjudication probation. Pursuant to EMS Rules 25 TAC 157.37 and/or, 25 TAC 157.36(b) and/or, (c).

Moreno, Roger, Austin, TX. 24-month probated suspension of the EMT certification through September 2005. Pursuant to EMS Rules 25 TAC 157.37 and/or, 25 TAC 157.36(b) and/or, (c).

Nelson Jr., Melvin, McGregor, TX. Suspension of ECA certification thru June 2004 due to a CE Audit. EMS Rules 157.36(b)(1), (2), (21) (28).

Nichols, Latrece, Houston, TX. 12 month probated suspension of EMS certification through August 18, 2004, misdemeanor deferred adjudication probation. EMS Rules 157.37, 157.36(b) and/or, (c).

North Texas EMS, Fort Worth, TX. 24 months probated suspension and administrative penalty of \$6,000 against provider license through January 10, 2004. EMS Rules 157.16(b); 157.16(c); 157.16(d)(1), (10), (11), (12), (14), (19); 157.11(l)(1), (3), (12), (13) and (e)(6).

Nowell, Brian, Red Oak, TX. 24 months probated suspension of EMT certification through August 7, 2004, misdemeanor convictions. EMS Rules 157.37 and/or, 157.36(b) and/or, (c).

Ochoa, Alfonso, Weslaco, TX. 24 month probated suspension of EMS certification through July 10, 2005, a misdemeanor conviction. EMS Rules 157.37, and/or 157.36(b), and/or (c).

O'Rourke, John, Houston, TX. 12 months probated suspension of the EMT-I certification thru November 2004. EMS Rules 157.36(b)(1); 157.36(b)(2); 157.16(d)(17); 157.11(i)(1); 157.11(i)(2); 157.11(i)(4); 157.11(l)(9); 157.36(b)(26); 157.36(b)(28); and 157.36(b)(29).

Ott, Christy A., Streetman, TX. Decertification of EMT certification effective January 20, 2003. EMS Rules 157.36(b)(11).

Paige, Sophia, Houston, TX. 12 month probated suspension of the EMT certification through June 2004. EMS Rules 25 TAC 157.36(b)(1); 157.36(b)(2); 157.16(d)(17); 157.16(d)(18); 157.36(b)(26); 157.36(b)(28); and 157.36(b)(29).

Parker, Michael, Waco, TX. Suspension

of EMT certification thru September 2005. EMS Rules 157.36(b)(1), (2), (10), (21), (28).

Paul, Jon, Rowlett, TX. Forty-eight (48) month probated suspension of EMS certification through September 2, 2007 for felony convictions. Pursuant to EMS Rules 25 TAC 157.37, and/or 25 TAC 157.36(b), and/or (c).

Pena, Mary, Marshall, TX. Decertification of EMT-I certification effective January 20, 2003. EMS Rules 157.36(b)(11).

Phillips, Earl, Manchaca, TX. 36 months probated suspension of EMT certification through April 9, 2005, a felony deferred adjudication. EMS Rules 157.37 and/or, 157.36(b) and/or, (c).

Pierce, Randy, Austin, TX. 12 month probated suspension of EMS certification through November 6, 2004 for a misdemeanor or conviction. Pursuant to EMS Rules 25 TAC 157.37 and/or, 25 TAC 157.36(b) and/or, (c).

Pinedo, Marisela, Los Fresnos, NM. Probated suspension of EMT-I certification through June 1, 2006. EMS Rules 157.44, 157.51(b)(16) and (c).

Pippin, Brian, Lipan, TX. 48 months probated suspension of EMT certification through April 9, 2005. EMS Rules 157.37(c)(2)(3)(G).

Prime Care Ambulance Service, Houston, TX. 12 months probated suspension of EMS provider license and a \$103, 000 administrative penalty, all but \$13,000 probated for 12 months through December 2003. EMS Rules 157.16(d)(1), and (19), and 157.11(l)(13).

Pro-Medic EMS, LLC., San Juan, TX. \$2,000 administrative penalty against EMS provider license effective March 20, 2003. EMS Rules 157.16(d)(1) and (19); 157.11(i)(1); 157.11(l)(1) and (13).

Pruitt, Mae Beth, Dayton, TX. 12 month probated suspension of the EMT certification through October 2004. EMS Rules 25 TAC 157.36(b)(1); 157.36(b)(2); 157.36(b)(6); 157.36(b)(26); 157.36(b)(28).

Pruitt, Roy, Dayton, TX. 12 month probated suspension of the EMT certification through October 2004. EMS Rules 25 TAC 157.36(b)(1); 157.36(b)(2); 157.36(b)(6); 157.36(b)(26); 157.36(b)(28).

Qualls, Chris, Austin, TX. 12 months probated suspension of EMT certification through April 7, 2004. Misdemeanor conviction. EMS Rules 157.37, 157.36(b) and/or, (c).

Quiroz, Carlos, Houston, TX. Decertification of the EMT certification effective June 2, 2003. EMS Rules 25 TAC 157.36(b)(1); 157.36(b)(2); 157.36(b)(11); 157.36(b)(15); 157.36(b)(18); 157.36(b)(21); 157.36(b)(26); and 157.36(b)(28).

Reed, Carroll, Houston, TX. 48- month probated suspension of EMS certification through August 22, 2007 for a felony deferred adjudication probation. Pursuant to EMS Rules 25 TAC 157.37 and/or, 25 TAC 157.36(b) and/or, (c).

Reeves, Shane, Austin, TX. 12 month probated suspension of EMS certification through October 14, 2004 for a misdemeanor deferred adjudication probation. Pursuant to EMS Rules 25 TAC 157.37 and/or, 25 TAC 157.36(b) and/or, (c).

Respress, John, Hempstead, TX. 12 month probated suspension of ECA certification through December 21, 2003, a misdemeanor conviction. EMS Rules 157.37,

DISCIPLINARY ACTIONS

157.36(b) and/or (c).

Reynolds, Steve, Bivins, TX. Decertification of EMT certification effective January 20, 2003. EMS Rules 157.36(b)(11).

Rhodes, Linda, Wimberly, TX. 48 months probated suspension of ECA certification through June 24, 2006, a misdemeanor and felony deferred adjudication. EMS Rules 157.37 and/or, 157.36(b) and/or, (c).

Riggs, Casey, Grand Prairie, TX. 18 month probated suspension of EMS certification through May 5, 2005 for a felony deferred adjudication probation. Pursuant to EMS Rules 25 TAC 157.37 and/or, 25 TAC 157.36(b) and/or, (c).

Riley, Clayton, Snyder, TX. Decertification of EMT certification effective January 20, 2003. EMS Rules 157.36(b)(11).

Riley, Stephen, Humble, TX. 47 months probated suspension of EMT certification through December 10, 2005. EMS Rules 157.37(c)(2)(3)(G).

Rio Grande EMS, Edinburg, TX. \$35,000 administrative penalty against EMS provider license effective March 20, 2003. EMS Rules 157.16(d)(1) and (19); and 157.11(l)(1).

Rocha, Carolina, Carrizo Springs, TX. 6 months suspension followed by 24 months probated suspension of the EMT-I certification through March 2004. EMS Rules 157.51(b)(1), 157.51(b)(2), 157.51(b)(10) and 157.51(b)(25).

Rodriguez, Deinea, Houston, TX. 24 months probated suspension of EMT certification through February 11, 2004, a misdemeanor or conviction. EMS Rules 157.37 and/or, 157.36(b) and/or, (c).

Romer, Sharon, Sierra Blanca, TX. Decertification of EMT-P certification effective January 20, 2003. EMS Rules 157.36(b)(11).

Roquemore, Joseph, Atlanta, TX. 48 months probated suspension of EMT certification through August 9, 2005. EMS Rules 157.37(c)(2)(3)(G).

Rubio, Rachel, McAllen, TX. Decertification of LP certification effective January 20, 2003. EMS Rules 157.36(b)(11).

Rubis, Daniel, Bedford, TX. 12 months probated suspension of EMT certification through March 7, 2004, misdemeanor deferred adjudication probation. EMS Rules 157.37, 157.36(b), and/or (c).

Ruffin, Rodney, Fort Worth, TX. 24 months probated suspension of EMT certification through August 2004. EMS Rules 157.36(b)(1); 157.36(b)(2); 157.36(b)(4); 157.36(b)(13); 157.36(b)(26); 157.36(b)(28).

Salinas, Rene, McAllen, TX. 51 months probated suspension of EMT certification through April 25, 2006, for a felony conviction. EMS Rules 157.37; 157.36(b), (c).

Sarusal, Demetrio, Mission, TX. Decertification of EMT-P certification effective January 20, 2003. EMS Rules 157.36(b)(11).

Segovia, Ann, Rockport, TX. Decertification of EMT certification effective January 20, 2003. EMS Rules 157.36(b)(11).

Seibert, Eric, Houston, TX. 24 months probated suspension of the EMT-P certification through September 2004. EMS Rules 157.36(b)(1); 157.36(b)(2); 157.36(b)(6); 157.36(b)(9); 157.36(b)(26); and 157.36(b)(28).

S.F. Diamond Corporation, Houston, TX. \$1,000 administrative penalty effective June 9, 2003. EMS Rules 25 TAC 157.16(d)(1); 157.16(d)(14); 157.16(d)(19);

157.11(e)(1); 157.11(l)(1); and 157.11(l)(13).

Sharp, Michael, Austin, TX. 12 month probated suspension of EMS certification through July 29, 2004, misdemeanor conviction. EMS Rules 157.37, 157.36(b) and/or, (c).

Shipp, Patrick L., Laneville, TX. 4 years probated suspension of EMT-I certification through July 28, 2004. EMS Rules 157.44(c)(2)(B)(vii).

Silva, Cesar, San Antonio, TX. 12 months probated suspension of EMT certification through April 7, 2004, misdemeanor deferred adjudication probation. EMS Rules 157.37, 157.36(b), and/or (c).

Simington, Daniel, Waco, TX. 12 month probated suspension of EMS certification through May 15, 2004 for a misdemeanor conviction. Pursuant to EMS Rules 25 TAC 157.37 and/or, 25 TAC 157.36(b) and/or, (c).

Smith, Lloyd, Houston, TX. 24 months probated suspension of EMT certification through March 20, 2005. 2 misdemeanor convictions. EMS Rules 157.37, 157.36(b) and/or, (c).

Smith Jr, Roosevelt, Houston, TX. 48 months probated suspension of EMT certification through November 5, 2005. EMS Rules 157.37(c)(2)(3)(G).

Snyder, Cody, Amarillo, TX. 12 month probated suspension of EMS certification through April 29, 2004 for a misdemeanor conviction. Pursuant to EMS Rules 25 TAC 157.37 and/or, 25 TAC 157.36(b) and/or, (c).

Solis, Reyes Y., San Angelo, TX. Decertification of EMT certification effective January 20, 2003. EMS Rules 157.36(b)(11).

South Star Ambulance Service, Inc., Weslaco, TX. \$4,000 administrative penalty effective June 30, 2003. EMS Rules 157.16(d)(1), (19); 157.11(i)(1), (4), (13); 157.11(l)(1).

Spillers, Casey, Paris, TX. Decertification of EMT certification effective January 20, 2003. EMS Rules 157.36(b)(11).

Stevenson, Doug, Katy, TX. 24 month probated suspension of EMS Coordinator certification thru July 2005. EMS Rules 157.43(m)(3)(b); 157.43(m)(3)(E) and 157.43(m)(3)(F).

Stephenville Fire Department, Stephenville, Tx., \$6,500 administrative penalty probated for 12 months through June 2004. EMS Rules 157.16(d)(1), (14) and (19); 157.11(e)(1); 157.11(l)(1) and (13).

Street, Marion, Temple, TX. Decertification of EMT-P certification effective January 20, 2003. EMS Rules 157.36(b)(11).

Sulecki, Christopher, Hockley, TX. 24 months suspension of the EMT certification through February 2004. EMS Rules 157.36(b)(1); 157.36(b)(2); 157.36(b)(7); 157.36(b)(26); and 157.36(b)(28).

Sullivent, Doyle, Rosanky, TX. 24 month probated suspension of EMS certification through June 27, 2005 for serving a felony deferred adjudication probation and for two (2) convictions. Mr. Doyle also has a felony conviction. Pursuant to EMS Rules 25 TAC 157.37 and/or, 25 TAC 157.36(b) and/or, (c).

Swinford, Richard, Plantersville, TX. 24 months probated suspension of EMT certification through April 29, 2005, 2 felony deferred adjudication probations. EMS Rules 157.37, 157.36(b), and/or (c).

Tapia, Roberto, Laredo, TX. 12 month

probated suspension of EMT certification through January 16, 2004, a felony deferred adjudication. EMS Rules 157.37, 157.36(b) and/or (c).

Terbeek, Matthew, Roanoke, TX. 12 month probated suspension of EMS certification through October 29, 2004 for a misdemeanor conviction. Pursuant to EMS Rules 25 TAC 157.37 and/or, 25 TAC 157.36(b) and/or, (c).

Thomas, David, Snyder, TX. 24 month probated suspension of EMT certification through November 21, 2004, felony conviction. EMS Rules 157.37, 157.36(b) and/or (c).

Thornton, Odis C., College Station, TX. 48 months probated suspension of EMT certification through June 18, 2005. EMS Rules 157.37(c)(2)(3)(G).

Tucker, Ian, Hewitt, TX. 12 month probated suspension of EMS certification through April 23, 2004 for serving a misdemeanor deferred adjudication probation. Pursuant to EMS Rules 25 TAC 157.37 and/or, 25 TAC 157.36(b) and/or, (c).

Van Meter, Ronald S., Midland, TX. 36 months probated suspension of EMT certification through December 17, 2004. EMS Rules 157.37(c)(2)(3)(G).

Vargas, Jose, Midland, TX. 12 month probated suspension of EMS certification through August 18, 2004, misdemeanor conviction. EMS Rules 157.37, 157.36(b) and/or, (c).

Warren, Andrew, Floresville, TX. 36 months suspension (first 18 months actual suspension, second 18 months probated suspension) of EMT-I certification through December 2004. EMS Rules 157.51(b) (25).

Watson, Michael M., Corpus Christi, TX. Decertification of EMT-P certification effective January 17, 2003. EMS Rules 157.36(b)(11).

Westlake Community VFD/EMS, Dayton, TX. 24 month probated suspension of EMS provider license through December 2004. EMS Rules 157.16(d)(1), (4), (6), (14) and (19), 157.11(e)(3) and 157.11(l)(13).

Williams, Kendrick, Houston, TX. Decertification of EMT certification effective July 22, 2003. EMS Rules 157.36(b)(1), (2), (6), (12), (26), (28) and (29).

Williams, Robert, Newton, TX. Decertification of EMT-I certification effective January 17, 2003. EMS Rules 157.36(b)(11).

Wingfield, Raymond, Celina, TX. Decertification of EMT-P certification through June 9, 2004. Chapter 53, Texas Occupations Code, Section 53.021.

Wulf, Dawn, Flatonia, TX. 24 months suspension of the EMT certification through September 2004. EMS Rules 157.36(b)(1); 157.36(b)(2); 157.36(b)(3); 157.36(b)(4); 157.36(b)(7); 157.36(b)(13); 157.36(b)(26); and 157.36(b)(28).

Zachary, Jessy, Humble, TX. Decertification of the EMT certification effective September 23, 2003. Pursuant to Chapter 53 of the Texas Occupations Code, Section 53.021, based upon his felony conviction and imprisonment for the felony offense of Criminal Mischief and misdemeanor Assault Causing Bodily Injury.

Zais, John, Mineral Wells, TX. 36 months probated suspension of EMT certification through November 7, 2004. EMS Rules 157.37(c)(2)(3)(G).

Meetings & Notices

Calendar

January 23-24, 2004. National Registry Testing. Site fee \$125.00. Fees and documentation must be turned in four weeks prior to testing. Call San Antonio College EMS Academy for details, 210/733-2640.

January 31-February 1, 2004. PALS. For more information call 210/733-2640 at San Antonio College San Antonio, Texas.

February 14-15, 2004. PEPP. For information call 210/733-2640 at San Antonio College, San Antonio Texas.

February 14-29, 2004. Methods of Teaching Emergency Medical Services. For information call 210/733-2640 at San Antonio College, San Antonio Texas.

February 20-February 22, 2004. BTLs Basic. For information call 210/733-2640 at San Antonio College, San Antonio Texas.

February 28-29, 2004. ACLS. For

information call 210/733-2640 at San Antonio College, San Antonio Texas.

March 5-6, 2004. National Registry Testing. Site fee \$125.00. Fees and documentation must be turned in four weeks prior to testing. Call San Antonio College EMS Academy for details, 210/733-2640.

March 13-14, 2004 BTLs Advanced. For information call 210/733-2640 at San Antonio College, San Antonio Texas.

April 17-18, 2004. PEPP. For information call 210/733-2640 at San Antonio College, San Antonio Texas.

April 17-18, 2004. ACLS. For information call 210/733-2640 at San Antonio College, San Antonio Texas.

April 19 through June 25, 2004. EMT-Paramedic (part 2). For information call 210/733-2640 at San Antonio College, San Antonio Texas.

April 27-30, 2004. TRAC V, 7th Annual South Texas Trauma Symposium on South Padre Island, Texas. Call 956-364-2022 or go to website www.tsav.org for details.

May 8-9, 2004. PALS. For more information call 210/733-2640 at San Antonio College San Antonio, Texas.

May 14-15, 2004. National Registry Testing. Site fee \$125.00. Fees and documentation must be turned in four weeks prior to testing. Call San Antonio College EMS Academy for details, 210/733-2640.

May 29-30, 2004 BTLs Advanced. For information call 210/733-2640 at San Antonio College, San Antonio Texas.

Jobs

EMTs, paramedics: Scott & White Pre-Hospital Services is seeking qualified applicants for positions. Competitive wages & benefits, positive work environment and opportunities for advancement (including critical care transport and helicopter positions). Interested persons should forward a cover letter and resume to Stephen Paine, Operations Manager, Building 19, 2401 South

31st St., Temple, TX 76504, 254/724-6369, fax 254/724-0019, spaine@swmail.sw.org. +

EMS Instructor (041159): Full-time faculty, anticipated to start Fall 2004. Associates degree in EMS (prefer bachelor's or master's in EMS, Allied Health Services or nursing), 3-year full-time paid EMS experience. TDH or NR licensed/certified paramedic. Closes March 12, 2004. Apply on-line at accdpeoplelink.accd.edu ph: 210/208-8051. +

Paramedic-NREMTP: Ruidoso-Lincoln County EMS, hospital-based in Ruidoso, NM, covering Lincoln County, the Mescalero Indian Reservation, Sacramento Mountains. Excellent benefits. Contact rlcems@zianet.com or call 505/937-4199 or fax resume to 505-257-3617.+

Paramedic- I: Knox Co. Hospital District EMS is accepting applications for full/part time and PRN paramedic and intermediate positions. Must be 25 or older and currently certified as Texas EMT-P or EMT-I and current Texas driver's license. Call 940/422-4929 or 940-657-3535. Resumes may be faxed to 940/422-4929 or 940/657-5521.+

Paramedics: Lubbock EMS, owned and operated by University Medical Center Health Systems, has openings for licensed/certified paramedics. Starting salary \$30,284/yr with \$150 sign on bonus. ACLS and a good driving required. For applications, go to www.teamumc.org or call the Human Resource Dept. at 806/775-9222.+

EMTs/EMT-Is/Paramedics: Gold Star EMS is now hiring for the Houston, Huntsville, South, East and West Texas area. Full benefits package includes medical, dental, 401k and paid time off. Please indicate the area of interest on a cover letter and fax your cover letter/resume to 866/206-2309. *

EMTs/Paramedics: Bay Star Ambulance Services in Baytown and Clear Lake is accepting applications. Competitive wages, paid sick and vacation days. Obtain an application at

Deadlines and information for meetings and advertisements

Deadline: Meetings and notices must be sent in six weeks in advance. Timeline: After the pages of this magazine have completely gone through editorial, design and layout, the magazine goes to the printshop to get printed (a 15-working-day process), then on to our mailing service (a 4-day process), and then to the post office to get mailed out. Please send in your calendar items six weeks in advance to make the next issue.

Cost: Calendar items are run at no charge. Calendar items run in the meeting section until just prior to the meeting or class. Classified ads run for two issues unless we are notified to cancel the ad.

Fax or mail: Calendar items can be faxed to 512/834-6736 or mailed to *Texas EMS Magazine*, Texas Department of Health, 1100 West 49th Street, Austin, TX 78756-3199. Call 512/834-6700 if you have a question about the calendar section.

Meetings & Notices

www.baystarems.com or call 281/422-7200 for more info. *

Ambulance Crews: Ace Ambulance service is now hiring. Competitive pay, new equipment and day shifts available. Paid weekly. Contact L. Cook 713/975-7800. *

Paramedics: Emerald Medical Services is looking for dependable paramedics for events and ambulance transports. \$12-\$14/hour. Contact Derek or Don 281/837-8375 or fax resumes to 281/420-0354. *

Volunteer EMTs/EMT-Is/Paramedics: Texas Air Corps, 9-1-1 EMS provider for Waterwood Community (near Lake Livingston in northern San Jacinto County) is a volunteer service and is in urgent need of volunteers for regular/occasional shifts on their MICU ambulance and Search and Rescue boat. For information contact Texas Air Corps/TAC EMS office at 281/359-8828 or by e-mail at texasaircorps@hotmail.com or tacemsceo@yahoo.com. *

For Sale

New 2003 Ford Chassis: T-III Remount Ambulance. Call 800/481-4490. +

Miscellaneous

CPR manikins, new and used: CPR supplies, airways, manikin face shields, face pieces, parts. Manikin maintenance cleaning and repairs. Rental manikins available. Contact Ron Zaring, Manikin Repair Center, Houston, 281/484-8382, fax 281/922-4429. *

CK Medical Group: Distribution company, AEDs for EMS, fire, police and public access, also provide medical direction, oversight AED automation and AHA certified CPR/AED training. PO Box 6698, Houston, TX 77265, 713/667-1934. dc@ckmedicalgroup.com *

Providers Billing Service: Electronic claims submission and collections experience for ambulance services. Local, long distance all over Texas. Give us a call at 800/881-9810.*

Health Claims Plus: EMS & Fire dept billing and free run report software available Excellent rates and services! Electronic billing, weekly and monthly reports and educational workshops. Contacts 888/483-9893 or visit www.healthclaimsplus.com.*

You Need Me: Eight years experience in data entry of claims. Set up an appointment to see how I can help you. Safe and Save Medical Billing Services, call 817/472-7421, fax 800/783-4567, njs@msn.com.*

Paramedic and EMT Blankets: Dimensions 70"x 40" 100 percent cotton made in the USA. Great Christmas gifts. Now taking orders call Rudy 940/723-2769 or 940/224-1369.*

Temperature Monitoring and Safe Drug Storage: Worried about drug deterioration due to temperature issues? Temperature data Logging Keys is an innovative answer. Call toll free 1-888-272-9838 or visit www.engel-usa.com. +

A Practical Solution To Safe Drug Storage: SteadyTemp developed specifically For EMS industry. Designed to fit the 1550 drug case SteadyTemp is a 12-volt constant temperature unit that has a cooling and heating system. Call toll free 1-888-272-9838 or visit www.engel-usa.com.

EmCert.com: Offers online CE TDH

and CECBEMC approved for EMS/Fire professionals. Subscription pricing for individuals or groups. Call 1-877-367-4376.+

Expert Billing: Specializing in EMS billing. Medicare, Medicaid and other insurances billed electronic by experienced billing representatives. Contact 713/635-6756 or fax 713/631-1404.*

Rope Rescue Training: Training for fire, EMS, law enforcement and industry in technical rescue, rope rescue, fire rescue, cave rescue, vehicle rescue and wilderness first aid. John Green at 361/938-7080, www.texasroperescue.com.*

CE Solutions EMS Continuing Education: Accepted in more than 40 states. Go to www.ems-ce.com for 2 free CE hours today or call toll free 1/888-447-1993.*

Pharmacy Technician Program: For more information contact Marilyn Goodnight, Alvin Community College, 281/756-3807.*

Interested in earning your bachelor's degree? UT Health Science Center at San Antonio. BS-completion degree in Emergency Health Sciences, a degree designed for paramedics. Some courses are offered on-line. www.uthscsa.edu/emt or call 210/567-77880.*

Express Billing Inc: Electronic billing including Medicare, Medicaid, insurance and private pay. Custom reports, consultation for EMS office and field employees. Contact 877/521-6111, 713/484-5700 or fax 713/484-5777. www.expressbilling.apg.com.

Placing an ad? Moving? Renewing your subscription?

Placing an ad? To place an ad or list a meeting date in this section, write the ad (keep the words to a minimum, please) and fax to: *Texas EMS Magazine*, 512/834-6736 or send to *Texas EMS Magazine*, 1100 West 49th, Austin, TX 78756-3199. Ads will run in two issues and then be removed.

Moving? Let us know your new address—the post office may not forward this magazine to your new address. Use the subscription form in this magazine to change your address, just mark the change of address box and mail it to us or fax your new address to 512/834-6736. We don't want you to miss an issue!

Renewing your subscription? Use the subscription form in this magazine to renew your subscription and mark the renewal box.

+ This listing is new to this issue.

* Last issue to run (If you want your ad to run again please call 512/834-6748.)

EMS Profile: Sherman Fire Department



Some of the Sherman Fire Department EMS members are, from left, Daniel McAtee, EMT; Lt. Bill Palya, EMT-P; Daniel Nixon, EMT-P; Kirk Wortham, EMT; and Danny Jones, EMT-P.

Number of personnel: Sherman FD has 74 members; 51 are paramedics and 20 are EMTs. There are five stations. The administrative staff consists of a chief, fire marshal, assistant fire marshal, operations/training officer, and EMS coordinator. We serve approximately 36,000 city residents and 60,000 county residents within our 260-square mile response district. The majority of our members are ACLS-trained and we have several with BTLs and PALS certificates. It is common for SFD to respond to a medical emergency with up to four paramedics.

When established: SFD was organized in 1873 under the name of Sam Houston Steam Fire Department and became a paid department around the turn

of the 20th century. It was not until 1971 that SFD took on EMS. Until that time EMS was provided by the local funeral homes.

SFD medical control is provided by Intermedix under the medical direction of Dr. Billy Miller of Houston.

Number of units and capabilities: SFD has four frontline ALS ambulances with MICU capabilities and one back-up ambulance. SFD engines are EMS engines with BLS equipment including AEDs. SFD ambulances are all equipped with Physio-Control LifePak 12s with 12-lead capabilities. In order to help maintain HIPAA policies, SFD has started using a paperless documentation system by using online data entry. This has helped to reduce documentation time and time spent out of service at the hospital. SFD has access to helicopter support provided by LifeStar, stationed at Wilson N. Jones Hospital.

Number of calls: In 2002, SFD responded to 5,678 calls; 4,693 of these calls were EMS-related. The average response time in the city last year from call to on-scene was five minutes and 15 seconds.

Current projects: We currently participate in numerous activities throughout the city to promote health and safety. We provide the public with CPR and AED training. We have weekly scheduled blood pressure checks at city hall and the senior citizens center. Every Thursday we serve the local business community with company inspections and pre-fire planning. We provide station tours, and visit schools and nursing homes. We provide ambulance coverage at air shows and high school and college football games. SFD has a clown safety education program that provides fire and injury prevention education programs. In April 2003 we participated in a Shattered Dreams Program at our local high school. We conduct customer service surveys on all EMS runs. We now provide non-emergency transports within Grayson County. 🇺🇸

Bureau of Emergency Management
Texas Department of Health
1100 West 49th Street
Austin, Texas 78756-3199

Periodical
Rate Paid
At Austin, Texas