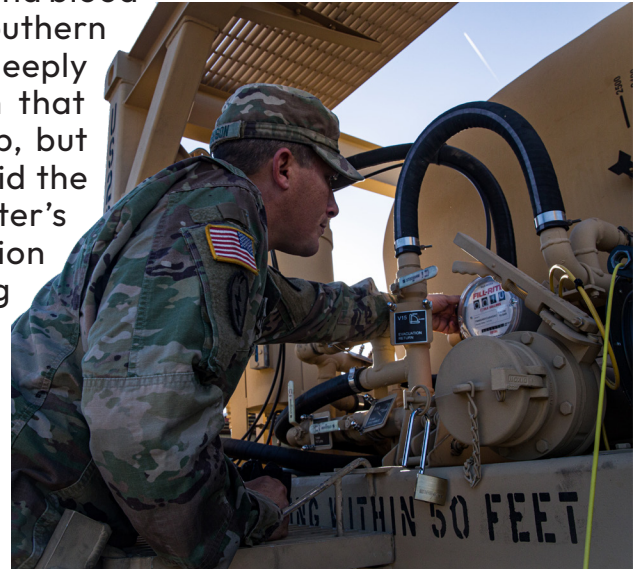




## SUSTAINMENT KEEPS THE MISSION GOING

By OLS PA Staff Writer

In every military, the supply lines are the vital arteries and blood that keep the operations running. Along the Texas southern border, the importance of sustainment operations is deeply felt at all levels of the mission. “We’re the lynchpin that stuff keeps going...the warfighter is there to do a job, but they can’t do that job without the proper support,” said the executive officer for India Company in Task Force Center’s area of responsibility. Whether by fixing night vision goggles or supplying fuel to keep the Humvees running and operational, sustainment is a small but critical piece of a larger mission to protect Texans - and by proxy, the rest of the United States. Each Task Force must have fuel, maintenance and supplies to continue to protect the border. This is why sustainment support is critically important. “Our job at the logistical



“Our job...is to provide the F’s... fixing, feeding and forward movement.”  
Executive Officer, I Company  
Task Force Center

positions is to provide, what we call the F’s. And that is fixing, feeding and forward movement,” Kirk said. “We try to make sure their stuff is fixed, we make sure they have all the food and water they need, and they have the ability to move supplies.” (continued on page 3)

## OLS ENGINEERS MAKE STRIDES IN BARRIER BUILDING

By OLS PA Staff Writer



Off to the side of a south Texas highway lies an entrance to privately-owned ranch land. Its entryway bears the last name of the owner, bold-lettered no trespassing signs, and a sturdy-metal gate. Texas National Guardsmen, packed into a heavy-duty truck carrying construction supplies, unlock the gate with their own set of keys and enter to begin their work day. Further into the property dozens more Guardsmen are already at work clearing vegetation, digging holes, setting posts, and installing hundreds of feet of fencing. This job site is one of several that have either been completed or are in progress in the Zapata County area, said the center-region commander of Operation Lone Star’s Task Force Engineers. (continued on page 2)





# OLS ENGINEERS MAKE STRIDES IN BARRIER BUILDING

By OLS PA Staff Writer



January interview Maverick County Sheriff Tom Schmerber affirmed the success of already-installed fences and the need for more. “I’ve had several landowners calling me directly...asking for Guardsmen to build a fence on their property due to the disruption of their livelihoods caused by illegal crossings,” said Schmerber. “Although we have the help of Texas Department of Public Safety troopers and Border Patrol agents, the problem can still be overwhelming,” he said. “The fence barriers will help to either stop the illegal crossings or will

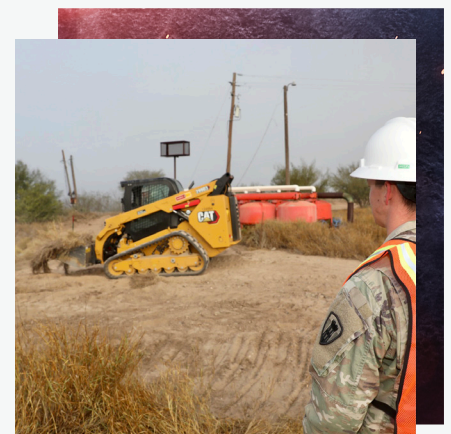


ease the burden of apprehending the crossers.” Coordination between DPS agents and Texas Guardsmen is essential to the success of TF Engineers. Before any one fence building project can begin, landowners determine how their land will be used with DPS’ agreement teams. And the landowners then grant access to OLS construction-management teams, said the center-region commander. “The landowners have been energized about these fence-building arrangements,” said Schmerber. “They have been involved with every step of the process.” Engineers throughout OLS’ center region have recently settled into a high-output pace. Like with any construction project, though, setbacks were plentiful in the beginning of TF-Engineer’s mission. Progress, for a time, slowed while Guardsmen negotiated technical issues with each property’s differing terrain. “All the while our Guardsmen remained technically and tactically proficient,” said the center-region commander. “They adapted quickly and have hit their groove,” he said. “We are now producing over 400 feet of completed fencing per day... thanks to strong non-commissioned officer leadership and an overall hardworking team!”

(Continued from page 1) “Our primary mission has been to install fencing along various privately-owned portions of the Texas-Mexico border,” said the commander. “Our team in the Zapata County area has installed four miles of fencing so far.” Since the beginning of the mission in late 2021, several-hundred Guardsmen have installed dozens of miles of fencing along the Texas-Mexico border from Del Rio to Brownsville. In a

“I’ve had landowners...asking for Guardsmen to build a fence on their property”

**Tom Schmerber**  
**Maverick County Sheriff**







# OLS DASHBOARD



As of 7 March, 2022

**114,400+**  
Illegal Immigrants  
Referred to DPS

**13,500+**  
Turned Back at  
Border

**78%+**  
Hardship  
Approval Rate

**90%+**  
Pay Discrepancy  
Resolution Rate

18.9 mi Temp Barrier  
75 mi Under Contract  
25% Completion

## COMMANDER'S CORNER



“I never cease to be impressed by what Guardsmen can accomplish. Task Force Engineers continue to put up temporary barrier along the border at a pace few thought could be done. As always though, our Soldiers couldn't do it without Task Force Sustainment. We are making lasting impacts on the safety and security of not only our state, but across the county. The only thing that can stop us now is us. Because this isn't a war zone, it's easy to forget the hazards that go along with this mission. I would ask that each of you take a moment to think about safety. Safety is everyone's responsibility, from operating equipment to handling weapons. Don't let OLS leave a legacy of mistakes and accidents. Think safety and leave a legacy of mission accomplishment.”

**Brigadier General Ulis**  
**Operation Lone Star Commander**



(Continued from page 1)

Task Force Sustainment comprises several companies that span across the joint area of operations. Forward Support Companies are assigned to each of the different Task Force areas to support distribution, transportation, maintenance and the headquarters of the Task Force Battalions. Sustainment operations ensure supplies and maintenance are provided in a timely manner so the mission will not be interrupted. They provide vital support to the companies and battalions across the Texas southern border. “What we are here to do is provide that support needed to protect those citizens and provide that security along that border,” said the Executive Officer. Behind every great warfighter is an excellent sustainer.



 **YouTube**  
**VISIT the TMD OLS**  
**YOUTUBE CHANNEL**







# SERVICE MEMBER RESOURCES



## Important Numbers

### TMD Wide

|  |              |
|--|--------------|
| Operation Lone Star Hotline                                | 512-782-1234 |
| TMD Counseling Program                                     | 512-782-5069 |
| Commander's Urgent<br>Behavioral Health<br>Resources Line: | 888-400-4123 |

### Task Force West

|                    |              |
|--------------------|--------------|
| S1/HUMAN RESOURCES | 888-400-4123 |
| S8/PAY ISSUES      | 888-400-4123 |
| CHAPLAIN           | 281-780-0014 |
| LEGAL              | 775-376-4512 |
| MEDICAL            | 806-681-8515 |

### Task Force Center

|                    |              |
|--------------------|--------------|
| S1/HUMAN RESOURCES | 512-619-9178 |
| S8/PAY ISSUES      | 512-906-8551 |
| CHAPLAIN           | 512-529-6969 |
| LEGAL              | 512-542-1614 |
| MEDICAL            | 512-634-6656 |

### Task Force East

|                    |              |
|--------------------|--------------|
| S1/HUMAN RESOURCES | 737-270-4556 |
| S8/PAY ISSUES      | 512-360-9684 |
| CHAPLAIN           | 972-979-4229 |
| LEGAL              | 843-359-2401 |
| MEDICAL            | 737-270-4557 |

### Task Force South

|                    |              |
|--------------------|--------------|
| S1/HUMAN RESOURCES | 713-532-3678 |
| S8/PAY ISSUES      | 713-532-3678 |
| CHAPLAIN           | 817-673-0962 |
| LEGAL              | 915-269-7538 |
| MEDICAL            | 210-955-1382 |

### Task Force Sustainment

|          |              |
|----------|--------------|
| S1 OIC   | 682-888-3939 |
| S1 NCOIC | 832-920-3372 |
| S8       | 512-782-1234 |
| CHAPLAIN | 817-675-2312 |
| MEDICAL  | 512-508-9175 |