

P400.6
P268
96/03-04



Government Publications
Texas State Documents

APR 26 1996

Depository
Dallas Public Library

PASSPORT SM

Vol. 5 No. 1 • March 1996 - April 1996

JOURNAL

Your passport to the real Texas.

THE NEW PASSPORT!

On May 1, 1996, two new membership options will be available to Passport holders: Gold at \$50 and Silver at \$25!

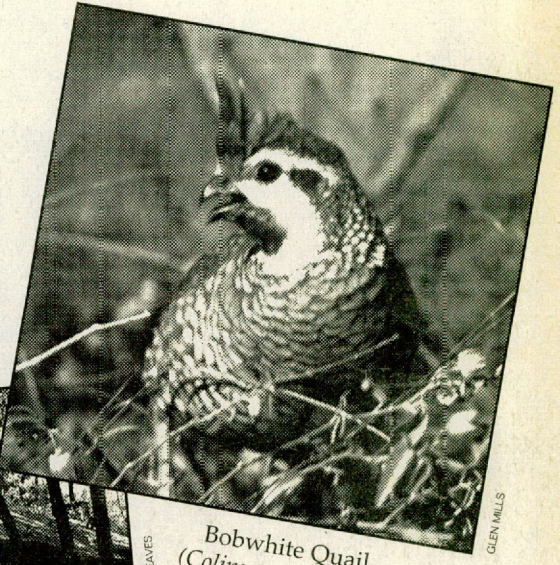
What's in the Gold membership? Free admission to state parks, a vehicle windshield decal, free historic park tours, and all benefits of the Silver membership.

Membership at the Silver level includes access to wildlife management areas, advance notice of activities and tours in the quarterly *Texas Conservation Passport Journal*, a \$10.50 rate on a subscription to *Texas Parks & Wildlife* magazine for one year and discounts on Texas Passport AdventuresSM tours!

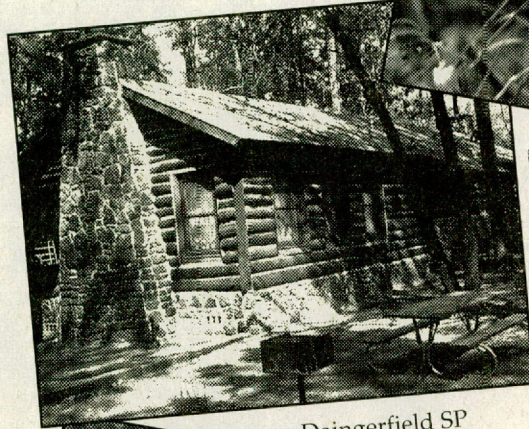
The current \$25 Conservation Passport includes free entry to state parks, a benefit that is good for twelve months from the date of purchase, when the membership expires!

Sometime in March or April we will use the last of the Passport cards like the one you have now. Why? Because TPWD started selling all licenses, including the Passport, through an automated, on-line system. While it speeds transactions, is more convenient and reduces operating costs, it cannot produce the plastic card.

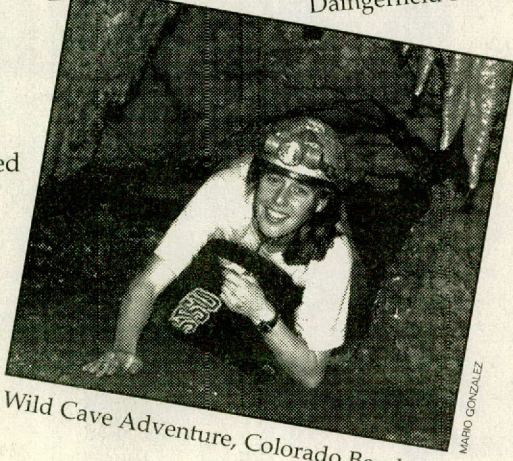
Your new Passport will resemble a cash register receipt and will be protected by self-laminating plastic. ★



Bobwhite Quail
(*Colinus virginianus*)



Daingerfield SP



Wild Cave Adventure, Colorado Bend SP

The first game law in Texas was the Act for the Protection of Game on Galveston Island, passed in 1861 to conserve bobwhite quail. The state park system was started in the 1920s and took form during the 1930s when the Civilian Conservation Corps built rustic cabins, lodges and structures. Many of those beautiful old buildings are still in use at 29 state parks.

In 1991, TPWD launched a personal membership program that was just as innovative for its time as game laws were for 1861 and state parks were for the 1920s.

Texas Conservation Passport membership calls everyone to active participation in Texas Parks and Wildlife Department's outdoor programs at state parks, wildlife management areas, fish hatcheries and more.

TEXAS PARKS AND WILDLIFE

1995-1996 Innovations & Changes ...page 3

| | |
|-------------------------------------|---------|
| Pricing Changes at the Park | 2 |
| 1995-1996 Innovations & Changes ... | 3 |
| Events | 4-9, 12 |
| Drive Across Texas | 10-11 |
| Passport Values | 12 |
| Schedule Your Own Outings | 13 |
| Texas Passport Adventures | 14 |
| Passport to Texas | 15 |
| Sea Center Texas | 16 |

To buy a Conservation Passport, go in person to a state park or a game warden office (see page 13), or purchase it with a credit card by calling 1-800-895-4248.

PRICE CHANGES AT THE PARKS

Starting May 1, state parks will charge an individual admission in much the same way that cinemas and amusement parks sell individual tickets. Also, rates will go up at about a third of the parks for campsites, lodges, cabins, group shelters and other facilities.

Look for these key changes: children 12 and younger will get in free, most adults will pay from \$1 to \$5 each for admission, and vehicle entry fees will be a thing of the past.

Adult admission will be \$2 at the majority of parks while only Devils River, Dinosaur Valley and Garner will charge \$5.

To greet the year 2000 in good shape, the state parks should make needed repairs and improvements estimated at \$186 million. For example, park cabins, built by the Civilian Conservation Corps 60 years ago, are in serious need of plumbing, wiring, roof repairs, waste-water system renovations and the like.

In addition, annual operating costs are roughly \$32 million, yet in 1995, fees only covered about \$21 million leaving some \$11 million to be paid from the sporting-goods sales tax. General tax dollars are no longer used to fund parks.

Adopting individual admissions and raising other fees is a blueprint for fiscal self-sufficiency in the coming years. Estimates suggest the price increases will generate \$5 to \$7 million.

The impact of these changes need not be immediate. Plan a camping trip after May 1, but make reservations before March 31 and pay the current lower rates; although the new adult admission prices will be charged. And, some park managers will reduce admission prices for overnight campers.

Even with all these changes, parks remain a real bargain offering new, extra benefits including more educational programs, tours and activities as well as the recently introduced Central Reservation Center. This contemporary service mirrors the standard practices of the travel and entertainment industry and was a long time in coming to state parks. With one phone call, it allows you to reach operators who can make reservations for you at every state park in Texas and help plan your trip. ♻️

For information, call 1-800-792-1112, when voice mail answers, press 3 for Park Information.



LERROY WILLIAMSON

Family tent-camping vacations in the 1950s grew into the RV and trailer-camping trend of the 1960s. Construction of modern facilities like the screened shelters at Lake Livingston SP and the multi-use campsites at Caddo Lake SP boomed after 1965.



LERROY WILLIAMSON

PARK RESERVATIONS

Campsites, cabins, shelters and group facilities can be reserved for up to eleven months in advance.

Reservations **must** be made at least **three days in advance** of your planned stay.

REGULAR RESERVATION HOURS

Monday through Friday
9 a.m. to 5 p.m.

OUR PHONE NUMBERS

To make reservations
1-512-389-8900

To cancel reservations
1-512-389-8910

Information 1-800-792-1112

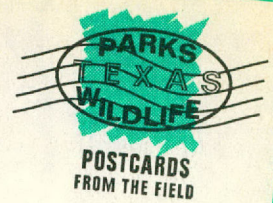
Press 3 for Park Information and then 3 again for All Other Park Information.

You can still make reservations directly at:

Indian Lodge 915-426-3254

Texas State Railroad 1-800-442-8951

Now look for us
on the Internet!



<http://www.tpwd.state.tx.us>



GLEN MILLS

During the 1970s, major trail systems like the 22-mile trail at Lake Somerville SP were constructed to meet a growing interest in cross-country hiking, biking and equestrian camping.

1995-1996 INNOVATIONS AND CHANGES

“Rolling change” is the term that best describes the growth and development of cultural and natural resource management in Texas since the first game law of 1861. But in the 1990s it is especially true. Listed below are some key dates and specific changes for Passport members.

DECEMBER 1995

TEXAS OUTDOOR CONNECTION

At 13 field locations, pilot tests were conducted on an electronic system to automate the sale of Passports, hunting and fishing licenses and other items. Small computer terminals, designed to accept credit cards, are linked to the TPWD licensing database via telephone lines.

Passports issued by the electronic process resemble cash register receipts and come with self-laminating covers to increase durability. **The paper/plastic receipt IS your Texas Conservation Passport, a legal document.** ♻️

APRIL 1996

BOTH CARDS AND PAPER/PLASTIC PASSPORTS WILL BE SOLD

The \$25 Passport, a plastic card, will still be sold. But, as the existing supply of cards is exhausted during the month, all state parks and game warden offices (see page 13) will switch to the TEXAS OUTDOOR CONNECTION electronic equipment.

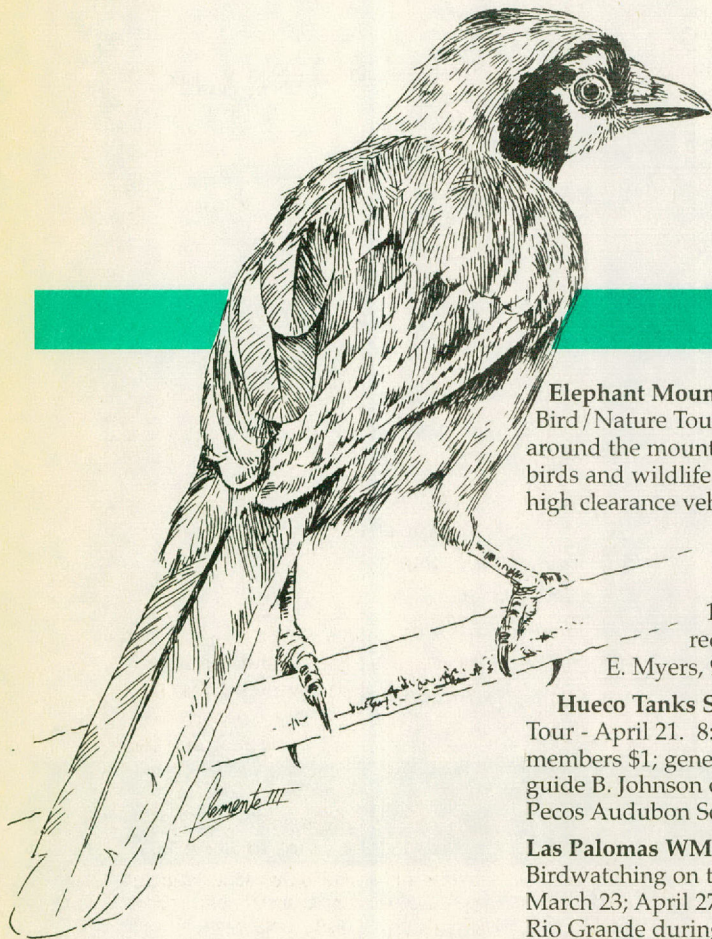
For that reason, some customers will receive cards and others will receive the paper/plastic receipt. ♻️

MAY 1, 1996

FOUR MAJOR CHANGES ARE COMPLETE

- 1) The current \$25 Passport membership will no longer be sold. However, the benefits purchased with the current \$25 Passport will be good until the membership expires.
- 2) The \$50 Gold and the \$25 Silver membership options will now be available.
- 3) The switch to electronic sales of Passports via the TEXAS OUTDOOR CONNECTION will be complete.
- 4) All Passports sold on or after May 1, 1996 will now consist of the paper/plastic receipt. ♻️

EXPLORE THE REAL TEXASSM



BIRDS

Elephant Mountain WMA Driving Bird/Nature Tour - April 13. Drive around the mountain with stops to view birds and wildlife. This tour requires a high clearance vehicle. Bring lunch and drinking water.

Maximum 20 people. TCP required. 8 a.m.-1 p.m., reservations required, guide biologist E. Myers, 915-364-2228.

Huaco Tanks SHP Bird Identification Tour - April 21. 8:30-10 a.m., fee TCP members \$1; general \$4 adults, \$2 children, guide B. Johnson of the El Paso Trans Pecos Audubon Society, 915-857-1135.

Las Palomas WMA/Ocotillo Unit Birdwatching on the Rio Grande - March 23; April 27. Birdwatching along the Rio Grande during the spring migration. Bring drinking water. No facilities are available on the unit. TCP required. 8 a.m.-1 p.m., reservations required, guide biologist T. Bone, 915-837-2051.

GULF COAST

Candy Cain Abshier WMA Migrant Songbird Tour - March 30. Take a migrant songbird tour of the Candy Abshier WMA, Anahuac National Wildlife Refuge and High Island. TCP required. 10 a.m.-4 p.m., reservations required, guide area biologist T. Turney, 409-736-2551.

Eagle Lake Second Annual Attwater's Prairie Chicken Festival - March 22, 23, 24. Tours of Attwater's Prairie Chicken National Wildlife Refuge, art fair, fun run, music, lectures by birding experts and much more. Starts 8 p.m. on March 22, 409-234-2780.

Fennessey Ranch Wildlife Tours - March & April, every Thursday & Saturday morning. Guided wildlife tours on privately-owned historic Fennessey Ranch,

established in 1834. A rare opportunity for birders and naturalists to view some of the 400-plus species of birds and wildlife who visit the ranch. 8 a.m., fee \$12.50 per person, reservations required, Fennessey Ranch Tours, 512-529-6600

Guadalupe Delta WMA Migratory Bird Tour - April 13. Mist-netting songbirds in the morning and birdwatching in the afternoon. TCP required. 7 a.m.-3 p.m., reservations required, guide biologist Dr. B. Ortego, 512-576-0022.

Las Palomas WMA/Longoria Unit Birding on the Las Palomas WMA - March 30; April 27. Meet at the Longoria Unit of Las Palomas (5 miles north of Santa Rosa on Hwy 506 in Cameron County) for birding. Then travel to other units of Las Palomas for continued birding. TCP encouraged. 7 a.m.-2 p.m., reservations required, guide biologist S. Benn, 210-383-8982.

Mad Island WMA Migratory Bird Tour - April 27. Features mist-netting of songbirds in the morning and birdwatching in the afternoon. TCP required. 7 a.m.-3 p.m., reservations required, guide biologist Dr. B. Ortego, 512-576-0022.

Matagorda Island SP Walking Bird Tour - April 13, 21. Guided walking tour of the north end of the island. Excellent place to observe spring bird fall outs. Bring lunch, good walking shoes, water and binoculars for this great birding opportunity. Not wheelchair accessible. TCP required. 8 a.m.-4 p.m., ferry fare \$10 adults, \$5 children under 12 plus \$2 tour fee, reservations required, guide volunteer naturalist L. Lewis, 512-983-2215.

Peach Point WMA Migratory Bird Tour - April 20, 21. Mist-netting of songbirds in the morning and birdwatching in the afternoon. TCP required. 7 a.m.-3 p.m., reservations required, guide biologist Dr. B. Ortego, 512-576-0022.

BIG BEND COUNTRY

Balmorhea SP Phantom Springs Bird Tour/Desert Wetlands Walk - Every Saturday in March and April. Travel by park van to birdwatch at Phantom Cave Springs. The Desert Wetlands Cienega is now open. TCP required. 8:30-10:30 a.m., fee \$5 per person, reservations required, guide park ranger T. Johnson, 915-375-2370.

Black Gap WMA Border Birding - April 14. Join us for birding Black Gap and along the Rio Grande. TCP required. 8 a.m.-2 p.m., reservations required, guide nongame specialist B. McKinney, 915-376-2216 or 915-386-4529.

Introduction to Birding in West Texas - April 28. Learn how and where to find birds in west Texas. TCP required. 8 a.m.-2 p.m., reservations required, guide nongame specialist B. McKinney, 915-376-2216 or 915-386-4529.

HILL COUNTRY

Kickapoo Cavern SNA Bird Banding Demonstration & Observation - April 27. Park staff will demonstrate techniques for both capturing and banding songbirds. 9 a.m.-noon, fee TCP members \$2 discount; general \$7, reservations required, guide park manager/biologist D. Stuart, 210-563-2342.

PANHANDLE PLAINS

Lake Brownwood SP Bird Walk - April 20. 7:30-10:30 a.m., guides Mr. and Mrs. G. Creel, 915-784-5223.

San Angelo SP Walking Bird Tour - March 23; April 7. Hike along the scenic trails in the park while identifying birds on their spring migration. Pack a lunch for a picnic in a natural setting. 10 a.m.-4 p.m. in March and 9 a.m.-3 p.m. in April, fee TCP members free; general \$2 adults, \$1 children 17 and under, reservations required, guide biologist R. Wilke, 915-949-4757 or 915-947-2687.

PINEYWOODS

Angelina Neches/Dam B WMA Wood Duck Nesting Box Boat Tour - April 13. Join your personal guide as you are brought out onto the management area to get a "birds-eye" view of the Wood Duck Nesting Box Project and discover what may be inside. Maximum 12 participants per tour. Bring cameras, cam-corders and life jackets. Some life jackets will be for rent at \$2 per jacket. First tour 8:30-10:30 a.m., second tour 11 a.m.-1 p.m., third tour 1:30-3:30 p.m., fee \$10 adults, \$5 children under 12, reservations required, guide wildlife specialist C. Lena, 409-384-5231.

Caddo Lake SP & WMA Hunters of the Night - March 23. All about owls. Starts 7 p.m., reservations required, guide conservation specialist J. Thomas, 903-884-3833.

Birdwatching Tour - April 6. Bring binoculars, field guides. Starts 10 a.m., reservations available but not required, guide ornithologist D. Metzler, 903-884-3833.

White Oak Creek WMA Hunters of the Night - April 20. Learn all about owls. Starts 10 a.m., reservations available but not required, guide conservation specialist J. Thomas, 903-884-3833.

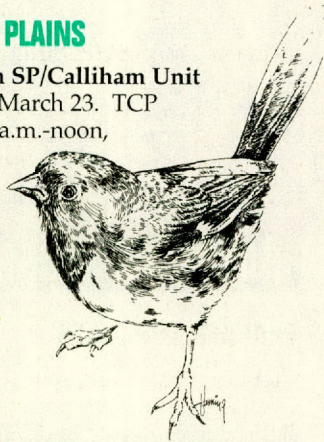
PRAIRIES AND LAKES

Cooper Lake WMA Birdwatching - March 30. Bring binoculars, field guides. Starts 9 a.m., reservations required, guide conservation specialist J. Thomas, 903-884-3833.

Pat Mayse WMA Birdwatching Tour - April 13. Guided birdwatching tour. Bring binoculars, birding guides. Starts 9 a.m., reservations required, guide conservation specialist J. Thomas, 903-884-3833.

SOUTH TEXAS PLAINS

Choke Canyon SP/Calliham Unit Birding Tour - March 23. TCP required. 8:30 a.m.-noon, reservations required, guide interpretive specialist T. Smith, 512-786-3868.



ARTS & PHOTOGRAPHY

BIG BEND COUNTRY

Big Bend Ranch SP Photography Workshop - April 11-14, 14-17, 18-21. Spend 3-1/2 days with renowned photographers Jim Carr and Peggy Harvey on the flora, fauna, scenery and spring bloom. Receive expert instruction and advice on outdoor photography. Features a day of photographing live models on the movie set from "Streets of Laredo." Meals and lodging included. Starts noon on April 11, 14 and 18, fee \$450, reservations required, guide photographers J. Carr and P. Harvey, 915-229-3416 or 713-486-8070.

Hueco Tanks SHP Friends of Hueco Tanks Rock Art Tour - April 13. Visit several rock art and archeological sites. 9-10:30 a.m., fee \$1 TCP members; general \$4 adults, \$2 children, guides park staff, 915-857-1135.

PINEYWOODS

Caddo Lake SP & WMA Photography Tour - April 20. Enjoy a great boating photo opportunity tour on the lake. TCP required. 7-11 a.m., fee \$25 per person, reservations required, guide Capt. D. Lomax, 903-679-3743.

Explore...Continued on page 6

Know before you go!

Texas Conservation Passports are for adults, age 17 and older. Children and young adults do not need to have a Conservation Passport and are not eligible for Passport discounts.

- See Drive Across Texas, Page 10-11, for directions to activities.
- Some of these activities require one Conservation Passport per person age 17 and over.
- Some activities require **reservations**.
- Most activities have a **limit on group size**.
- For **reservations** and information, call the phone number listed with the activity.
- For WMAs, the best time to catch the biologist in the office is on a weekday 8 to 9 a.m. and 12 to 1 p.m.
- Call WMAs before going to visit to make sure you can have access.
- Abbreviations:

SP = State Park

SFH = State Fish Hatchery

SHP = State Historical Park

SNA = State Natural Area

WMA = Wildlife Management Area

TCP = Texas Conservation Passport

TPWD = Texas Parks & Wildlife Department

BIKING

PANHANDLE PLAINS

San Angelo SP Mountain Bike Trail Ride - April 20. Ride with other mountain bikers along more than 20 miles of marvelous riding trails. 10 a.m.-1 p.m., fee TCP members free; general \$2 adults, \$1 children 17 and under, reservations required, 915-949-4757 or 915-947-2687.

PRAIRIES AND LAKES

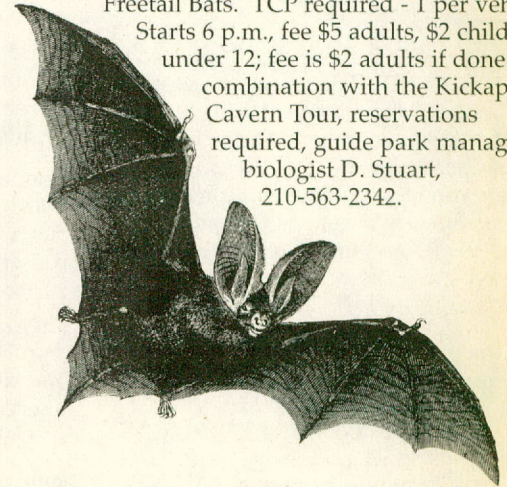
Bonham SP Mountain Bike Trail Ride - March 30; April 13, 27. Ride our new 12 mile bike trail! Headquarters will provide the maps and information. Starts 9 a.m., 903-583-5022.

BATS

HILL COUNTRY

Devil's Sinkhole SNA Devil's Sinkhole and Bats - April 27. Join us as we observe and interpret the sinkhole and its associated bat flight. Starts 6 p.m., fee TCP members \$2 discount; general \$8 adults, \$5 children under 12, reservations required, guide park manager/biologist D. Stuart, 210-563-2342.

Kickapoo Cavern SNA Brazilian Freetail Batflight at Green Cave - April 11, 13, 17, 25. Join us for the observation of the evening emergence of the Brazilian Freetail Bats. TCP required - 1 per vehicle. Starts 6 p.m., fee \$5 adults, \$2 children under 12; fee is \$2 adults if done in combination with the Kickapoo Cavern Tour, reservations required, guide park manager/biologist D. Stuart, 210-563-2342.



CONCERTS IN THE PARK

PRAIRIES AND LAKES

Cleburne SP Traditional Cowboy Music Concert - April 13. Relax under the stars and enjoy as you learn about the cowboy lifestyle through the music and poetry of the old West. Bring a lawn chair. Dates are subject to change so call ahead to confirm. 7-10 p.m., guides cowboy singer S. Schick and interpretive ranger D. Owens, 817-645-4215.

SOUTH TEXAS PLAINS

Goliad SHP Spring Concert - April 21. Yearly concert presented by the Beeville County College and the Beeville Community Choir. 3-4:30 p.m., fee \$4 per vehicle, 512-645-3405.

HAYRIDES & CAMPFIRES

PRAIRIES AND LAKES

Cleburne SP Wildflower Tour - April 27. Take a hayride at the park with several stops along the way in order to view, identify and learn about wildflowers. First tour 10-11:30 a.m., second tour 2-3:30 p.m., fee \$1 per person, \$3 per family, reservations required, guide interpretive ranger D. Owens, 817-645-4215.

Mother Neff SP Campfire Sing-A-Long and Hayride - March 30. Enjoy a hayride to the park's restored prairie, snacks by the fire and a sing-a-long. 6-8 p.m., fee \$2 per person, reservations available but not required, guide park interpreter C. Weiss, 817-853-2389.

Hayride Tour - April 20. Enjoy a hayride at the park with stops along the way for wildflower identification and photography. As weather permits. 1-3 p.m., fee TCP members free; general \$2 adults, reservations available but not required, guide park interpreter C. Weiss, 817-853-2389.

BIG BEND BUS TOURS

Big Bend Ranch SP Bus Tours - April 6. Departing from Fort Leaton SHP. Will make stops at archeological, historic and geological sites for photography, botany, and wildlife viewing. Lunch is included. 8 a.m.-5 p.m., fee TCP members \$55; general \$60, reservations required, guide naturalist D. Alloway, 512-389-8900.

April 19. Departing from Lajitas. Will make stops at archeological, historic and geological sites for photography, botany, and wildlife viewing. Lunch is included. Other tour dates are available upon request. 8 a.m.-5 p.m., fee \$60, reservations required, guides R. Gibson and B. Baskin of Big Bend Adventures, 915-424-3234.

April 20. Departing from the Barton Warnock Center at Lajitas. Will make stops at archeological, historic and geological sites for photography, botany, and wildlife viewing. Lunch is included. 8 a.m.-5 p.m., fee TCP members \$55; general \$60, reservations required, guide naturalist D. Alloway, 512-389-8900.

OUTDOOR SKILLS

BIG BEND COUNTRY

Big Bend Ranch SP Desert Survival Workshop - March 22-24; April 26-28. Learn to survive in the Chihuahuan Desert with only the resources at hand. The emphasis will be on primitive skills instead of dubious "survival" tools. Skills include water location, plant uses, shelter, aiding rescuers, primitive fire making, cooking and more. Includes meals, lodging, evening programs and custom T-shirt. In April, Bob Cooper, chief survival instructor for Australia's National Park & Wildlife Service will be guest instructor. TCP required. Starts 8 a.m., fee \$300, reservations required, guide naturalist D. Alloway, 915-229-3416.

HILL COUNTRY

Colorado Bend SP Introduction to Backpacking - April 7. Learn backpacking basics for both overnight and extended excursions in all four seasons. Maximum 25 people. 11 a.m.-4 p.m., fee TCP members \$8; general \$10, guide park ranger E. Young, 915-628-3240.

PRAIRIES AND LAKES

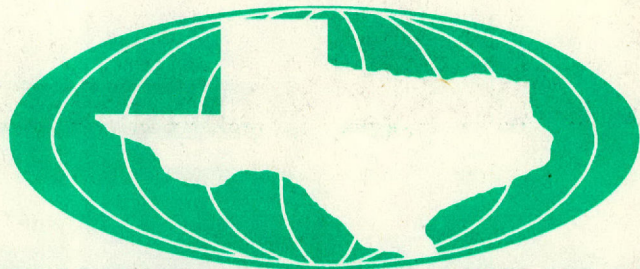
Meridian SP Women's Fishing Retreat - April 12-14. A weekend retreat for women 18 and older who would like to learn to fish or improve the skills they already have. Fee \$60, includes meals, lodging, park entry fee, and lessons, reservations required, guide professional angler and instructor S. Ruzlink, contact B. Wilson at 817-435-2536.

CAVE ADVENTURES

HILL COUNTRY

Colorado Bend SP Wild Cave Tours - March & April every Saturday and Sunday. Discover what speleologists (cavers) experience while exploring the underground world. The crawling tour takes you through several relatively small and progressively more difficult caves. The walking tour takes you to Gorman Cave. Wear old clothes, substantial footwear (feet may get wet) and bring a flashlight. Equipment suggested for crawling tours: strap-on headlight, knee pads, and elbow pads. Crawling tour starts 1:30 p.m. Saturdays and is \$15 per person. Walking tour starts 9:15 a.m. Saturdays and Sundays and is \$8 per person. Resources and weather permitting. Reservations required, maximum 10 people per tour, guide E. Young of the Texas Speleological Association, 915-628-3240.

Kickapoo Cavern SNA Flashlight Tour of Kickapoo Cavern - March 21, 23; April 11, 13, 17, 25. Take a flashlight tour of an undeveloped cave. TCP required per vehicle. 1-3 p.m. in March and 4-6 p.m. in April, fee \$5 adults, \$2 children 12 and under, reservations required, guide park manager D. Stuart, 210-563-2342.



STARGAZING

BIG BEND COUNTRY

Huaco Tanks SHP Stargazing - April 13. View the night sky as the early Texans saw it--no big-city lights to detract from the intensity of the stars. Telescopes will be provided, but bring your own if you want to. 7-10:30 p.m., fee \$1 TCP members; general \$4 adults, \$2 children, guide C. Stone of the El Paso ISD Planetarium, 915-857-1135.

PINEYWOODS

Caddo Lake SP & WMA Moonwatch and Stargazing - March 30; April 13. Come and enjoy the stellar skies over beautiful Caddo Lake. Starts 7 p.m. in March and April, reservations available but not required, guide park manager T. Prichard, 903-884-3833.

EARTH DAY

HILL COUNTRY

Colorado Bend SP Earth Day Project - April 20. The Central Texas Grotto will be showing slides of cave conservation and bat information at the Conference Center. Guided tours of Gorman Cave and Gorman Falls. Both the cave and the falls are in beautiful but rugged terrain; wear sturdy footwear and bring drinking water. Cave tour fee \$8 per person; falls tour fee \$2 adults, \$1 children 12 and under, 915-628-3240.

Guadalupe River SP Earth Day Family Activities - April 20. Earth Day events will begin with "bird man" David

McKelvey and his animal friends. Afterwards, families are invited to join in on various "Project Wild" games. 2-5 p.m., fee \$2 per person, \$5 per family, 210-438-2656.

PRAIRIES AND LAKES

Cedar Hill SP Earth Day/Penn Farm Grand Opening - April 20. Earth Day (8 a.m.-noon) will focus on the native tallgrass prairie and neo-tropical birds. Penn Farm celebrations start at noon. 8 a.m.-4 p.m., reservations required, guide C. Griffith, 214-291-3900.

Explore...Continued on page 8

TEXAS HISTORY

PANHANDLE PLAINS

Fort Griffin SHP Fort Griffin Frontier Days - April 27, 28. Let us entertain you with a living history reenactment of the Texas frontier during the 1870s. Starts 8 a.m. on April 27, reservations available but not required, guide park manager L. W. Galbreath, 915-762-3592.

PRAIRIES AND LAKES

Fanthorp Inn SHP Stagecoach Days - April 13. Ride on a replica of an 1850s Concord Stagecoach. Enjoy dulcimer music, artisan demonstrations, and tour the 1834 Stagecoach Inn. 1-4 p.m., fee \$4 adults, \$2.50 children 12 and under, J. Greenlaw, 409-873-2633.

Washington-On-The-Brazos SHP April Folk Weekends - Every Saturday and Sunday during April. Come on our wildflower walks, learn natural history and folklore. Visit our living history programs afternoons at 1, 2 and 3 p.m. at the Independence Hall. Relive the "Washington Story" through the eyes of an early settler and take a tour through the Anson Jones Home, given by Anson Jones himself. The Star of the Republic Museum will feature various folk artisans who will display such activities as spinning, lacemaking, singing, dulcimer music also military and historical reenactments. 409-878-2214.

HORSEBACK OUTINGS

HILL COUNTRY

Hill Country SNA Guided Horseback Tour - April 14. This ride will focus on the cultural and natural resources of the area. Mount and lunch provided. 8 a.m.-noon, fee TCP members \$40; general \$42 plus \$1 at park entrance, reservations required and must be made through Running 'R' Ranch, guide conservation specialist S. Heavey, 210-796-3984.

PANHANDLE PLAINS

Fort Griffin SP Historic Trail Ride - March 30, 31. Historic trail ride. Park manager L. W. Galbreath, 915-762-3592.

San Angelo SP Spring Trail Ride - March 30. Bring your horse and join other equestrians on more than 20 miles of trails filled with natural beauty and abundant wildlife. Camping is available if a full weekend of riding is desired. 10 a.m.-4 p.m., fee TCP members free; general \$2 adults, \$1 children 17 and under, reservations required, guide L. Freeman, 915-949-4757 or 915-947-2687.

SPLISH - SPLASH

PINEYWOODS

Angelina Neches/Dam B WMA Chris's Cruisin' Canoes - April 27. When was the last time you and your family got away from it all? Well, that's been too long! Venture down the Angelina Neches River system on a peaceful canoe float. Starts at Bevilport and ends at Walnut Ridge Unit Boat Ramp of the Martin Dies, Jr. SP. Starts 8 a.m. on April 27, fee \$50/2 renting canoe, \$30/2 bringing canoe, \$10/third person plus \$2/person for shuttle service to launch area, reservations required, guide wildlife specialist C. Lena, 409-384-5231.

Caddo Lake SP & WMA Boating Ecotour on Caddo Lake - March 23; April 13, 27. Guided boat tour of beautiful Caddo Lake. TCP required. 1-3 p.m., fee \$7 adults, \$6 students and senior citizens, \$5 children (5-12), reservations required, guide Capt. D. Lomax, 903-679-3743.



WILDLIFE

HILL COUNTRY

Guadalupe River SP Endangered Species of Central Texas - March 23. Presentation on endangered species of central Texas focusing on the golden-cheeked warbler. 6:30-7:30 p.m., guide L. Campbell of the Endangered Resource Program, 210-438-3422.

Lost Maples SP Alligator Program - April 13. See and learn about friendly reptiles. 4-5 p.m., donations accepted, reservations available but not required, guide regional interpretive specialist S. Phenix, 210-966-3413.

PINEYWOODS

Martin Dies, Jr. SP "Pig and a Poke" - March 30. Come out to the dining hall located in the Walnut Ridge Unit of the park and learn about the feral hog. The Jasper Wildlife Group will give information on the "porker's" habits and their habitat. 7-9 p.m., fee \$2 adults, \$1 children 12 and under plus \$4 per vehicle entrance, reservations available but not required, 409-384-5231.

SOUTH TEXAS PLAINS

Choke Canyon SP/Calliham Unit Wildlife Track I.D. - April 6, 20. Children 6-12 will learn to identify wildlife tracks and make plaster-of-paris copies of animal prints. 9 a.m.-noon, reservations required, guide interpretive specialist T. Smith, 512-786-3868.

HIKES & WALKS

BIG BEND COUNTRY

Big Bend Ranch SP Journey Through Time - April 23-24, April 30- May 1, Two day geological field trip along the Rio Grande, through the Bofecillos Mountains and ending in a spectacular hike through the Lower Shutup of the Solitario. Visit canyons, waterfalls, and the Solitario, a famous geological "window" with rocks dating back 520 million years. Fee includes meals, transportation, guides, lodging and the evening program. Starts 8 a.m. on April 23 and 30, fee \$245, reservations required, guide P. DeKoninck of Diversity Expeditions, 915-371-2523 or 915-229-3416.

GULF COAST

Matagorda Island SP Beach Combing and Shelling Tour - March 24. Six hours of shelling and beachcombing on the Gulf of Mexico beach. Transportation will be an open 4-wheel drive vehicle so be sure to dress for the weather. Bring a lunch for picnicking on the beach. Information on mollusks, tropical drift seeds and the ecosystems of Gulf barrier islands will be provided by TPWD staff. TCP required. 10 a.m.-5 p.m., ferry fare \$10 adults, \$5 children plus \$2 tour fee, reservations required, guide C. Veatch, 512-983-2215.

HILL COUNTRY

Colorado Bend SP Gorman Falls Hike - March & April every Saturday and Sunday. Caravan from park headquarters to the Gorman area of the park and then hike to below the falls. From trail head, it's a 1 1/2 mile round-trip over beautiful hill country terrain. Substantial footwear with rubber soles is recommended. No pets allowed on tour. No restrooms or drinking water available in Gorman Falls area. 10 a.m. & 2 p.m. Saturdays and 10 a.m. on Sundays weather permitting, fee \$2 adults, \$1 children 6 to 12, under 6 free, activity fee may apply and entrance fee for non-TCP members, guide B. Paddie, 915-628-3240.

Honey Creek SNA Lower Edwards Plateau Ecosystem Walk - March 30; April 6. Two mile guided walk with an interpretation of cultural, biological and geological histories of the hill country. 9-11 a.m., fee \$2 per person, \$5 per family, guide park naturalist P. Solis, 210-438-2656.

Geology Walk - April 20. Take a two mile walk along Honey Creek Canyon and enjoy the unique geology. 9-11 a.m., fee \$2 per person, \$5 per family, guide research geologist C. Coran, 210-438-2656.

PINEYWOODS

Village Creek SP Guided Nature Hike - April 6, 20. Two hour, two mile hike through the bottom land hardwoods, the mid-slope pine and oak communities. 9-11 a.m., reservations required, guide park ranger J. Rashall, 409-755-7322.

PRAIRIES AND LAKES

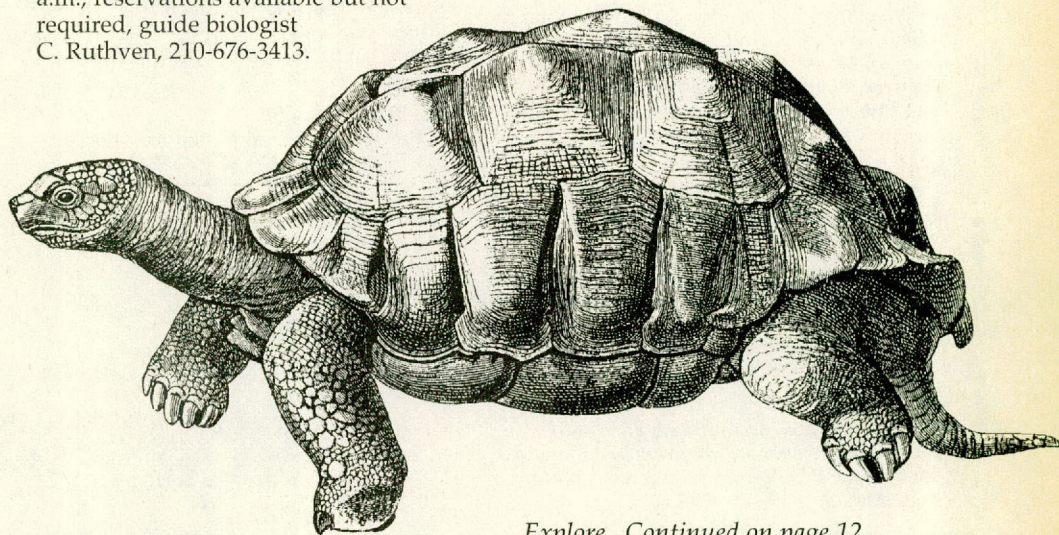
Cedar Hill SP Native Tallgrass Prairie Walk - April 27. Join us for the slide show "The Story of the Tallgrass Prairie" and then a native prairie walk. 8 a.m.-noon, reservations required, guides park rangers P. Baldon and C. Griffith, 214-291-3900.

Gus Engeling WMA Sphagnum Peat Bog Interpretive Tour - April 27. Learn about the origin, development and management of bog environments. Visit a 225-acre bog with one of the most unique plant communities in Texas which includes several species of insectivorous plants, bog orchids, and wild iris. TCP required. 8:30 a.m.-noon, reservations required, guide Dr. C. Rowell, 903-928-2251.

SOUTH TEXAS PLAINS

Bentsen-Rio Grande Valley SP/ Las Palomas WMA Nature Tours - March 20; April 3, 17. Explore the Las Palomas WMA in the lower Rio Grande Valley. TCP required. 8 a.m.-4 p.m., reservations required, guide B. Loya, 210-585-1107.

Chaparral WMA Exploring the Flora and Fauna of the Rio Grande Plains - April 26, 27, 28. Two walking and one driving area nature trails will be open to the public. Staff will provide one to two guided tours each day. There will be presentations on the Texas tortoise, Texas Horned Lizard and rattlesnakes Saturday morning. TCP required. Friday 4-7:30 p.m., Saturday 6:30 a.m.-7:30 p.m., Sunday 6:30-11:30 a.m., reservations available but not required, guide biologist C. Ruthven, 210-676-3413.



For information on purchasing a Texas Conservation Passport call 1-800-792-1112 8 a.m.-5 p.m. Monday - Friday

You can also call 1-800-895-4248 to purchase your Passport with a credit card.

Explore...Continued on page 12

HILL COUNTRY

Colorado Bend SP

In Lampasas and San Saba counties on the Colorado River, about 10 miles above Lake Buchanan, near the community of Bend. Bend is north of Llano via State Highway 16 or west of Lampasas via U.S. Highway 183/190. Paved access to Bend via Ranch Roads 501, 580 or 581. From Bend there are approximately 4 miles of unpaved road to the park entrance, 915-628-3240.

Devil's Sinkhole SNA

Closed to the public. Access by Texas Conservation Passport only. In northeastern Edwards County about 135 miles northwest of San Antonio; contact Kickapoo Cavern SNA for directions at 210-563-2342.

Granger WMA

In Williamson County. From Taylor, take State Highway 95 north to Circleville and turn east on F.M. 1331 then approximately 6 miles to the Wilson Fox Park/Granger Dam road. Corps of Engineers headquarters has area maps (with registration boxes marked) at the north end of the dam road, 512-859-2668.

Guadalupe River SP

In Kendall and Comal Counties, 30 miles north of San Antonio on State Highway 46 between Boerne and U.S. Highway 281, 210-438-2656.

Hill Country SNA

In Bandera and Medina counties, 10 miles southwest of Bandera. From Bandera, take State Highway 173 south a 1/4-mile to Ranch Road 1077 (also marked as "Dixie Dude Ranch Road"); go 10 miles to the park entrance, the last 1.5-mile stretch is not paved, 210-796-4413 (park is closed Tuesdays and Wednesdays).

Honey Creek SNA

Access through Guadalupe River State Park, see above, 210-438-2656.

Kerr WMA

In Kerr County on the scenic headwaters of the north fork of the Guadalupe River, 14 miles west of Hunt accessed off F.M. 1340, 210-238-4483.

Kerrville-Schreiner SP

In Kerr County 3 miles southeast of Kerrville; on both sides of State Highway 173 on the Guadalupe River, 210-257-5392.

Kickapoo Cavern SNA

Access by Texas Conservation Passport only. Everyone over 17 years of age or older required to have a Passport. In Edwards and Kinney counties, 40 miles west of Uvalde on U.S. Highway 90, then 22.5 miles due north of Bracketville on Ranch Road 674; park entrance is on west side of road, 210-563-2342.

Lost Maples SNA

In western Bandera County on the Sabinal River, five miles north of Vanderpool on Ranch Road 187, 210-966-3413.

San Angelo SP

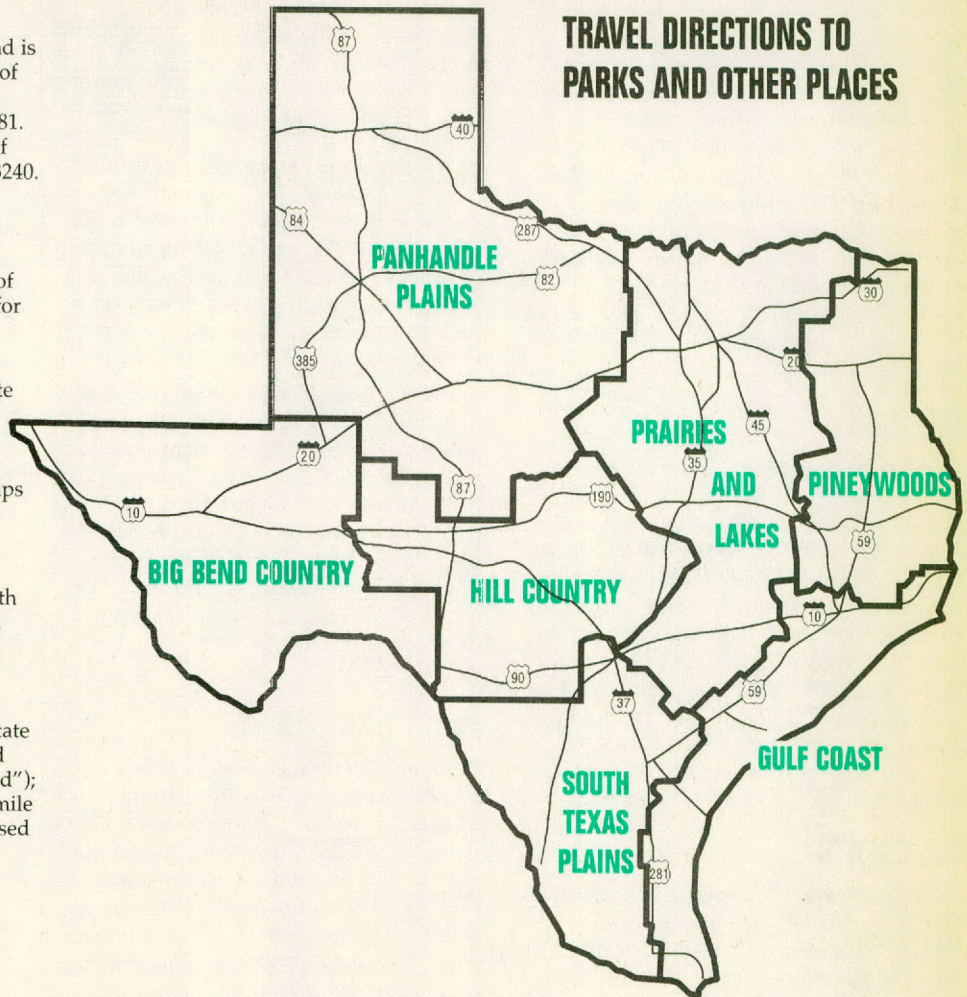
In Tom Green County, 1 mile west of San Angelo, on the O.C. Fisher Reservoir, via either U.S. Highway 87 or 67 to F.M. 2288 to park entrance, 915-949-4757.

Walter Buck WMA

In Kimble County, on the South Fork of the Llano River. Take State Highway 377 south of Junction, the WMA entrance is 3 miles past the city limits sign, 915-446-3994.

DRIVE ACROSS TEXAS

TRAVEL DIRECTIONS TO PARKS AND OTHER PLACES



BIG BEND COUNTRY

Balmorhea SP

In Reeves County 4 miles west of Balmorhea on State Highway 17, 915-375-2370.

Barton Warnock Environmental Education Center

Located in Lajitas. Part of the Big Bend Ranch SP, 915-424-3327.

Big Bend Ranch SP

In Brewster and Presidio counties, north of Lajitas on F.M. 170, 915-229-3416.

Black Gap WMA

In Brewster County 58 miles south of Marathon. Drive 40 miles south on U.S. Highway 385 to F.M. 2627, then east on F.M. 2627 for 18 miles, 915-376-2216.

Davis Mountains SP

In Jeff Davis County, about 4 miles northwest of Fort Davis, via State Highway 118, 915-426-3337.

Devils River SNA

In Val Verde County, about 45 miles north of Del Rio and 22 miles off U.S. Highway 277, 210-395-2133.

Elephant Mountain WMA

In Brewster County about 26 miles south of Alpine on the east side of State Highway 118, 915-364-2228.

Fort Leaton SHP

In Presidio County 4 miles southeast of Presidio on the River Road to the Big Bend (F.M. 170), one of the most scenic highway routes in the southwest, 915-229-3613.

Huaco Tanks SHP

In El Paso County, approximately 32 miles east of El Paso on Ranch Road 2775, just north of U.S. Highway 62-180, 915-857-1135.

Las Palomas WMA/Ocotillo Unit

In southwestern Presidio County, about 36 miles northwest of Presidio, or 1 mile northwest of Ruidosa on F.M. 170, 915-837-2051.

PRAIRIES AND LAKES

Bonham SP

In Fannin County southeast of Bonham. Take State Highway 78 to F.M. 271 go south/southeast for 2 miles to Park Road 24, 903-583-5022.

Caddo Grasslands WMA

In Fannin County 15 miles north of Honey Grove, off F.M. 100, 903-884-3833.

Cedar Hill SP/Penn Farm Agricultural History Center

In the southwest corner of Dallas County about 15 miles southwest of Dallas on Joe Pool Lake. The park is 2 miles northwest of Cedar Hill and is accessible via F.M. 1382, 214-291-3900.

Cleburne SP

In Johnson County. From Cleburne take U.S. Highway 67 west for approximately 4 miles, turn on Park Road 21 for 6 miles, 817-645-4215.

Cooper Lake WMA

In Hopkins County 12 miles north of Sulphur Springs on State Highway 154, 903-884-3833.

Eisenhower SP

In northern Grayson County 5 miles northwest of Denison. Take U.S. Highway 75A (now State Highway 91) north to F.M. 1310, turn northwest and travel about 2 miles to Park Road 20, 903-465-1956.

Fanthorp Inn SHP

In Grimes County on State Highway 90, 10 miles east of Navasota, 409-873-2633.

Gus Engeling WMA

In Anderson County 21 miles northwest of Palestine; or 38 miles southeast of Corsicana on U.S. Highway 287, 903-928-2251.

Meridian SP

In Bosque County 3 miles southwest of Meridian off State Highway 22, 817-435-2536.

Mother Neff SP

In Coryell County 18 miles west of Moody on State Highway 236, 817-853-2389.

Pat Mayse WMA

In northwestern Lamar County, approximately 12 miles northwest of Paris on F.M. 79 north off Loop 286, 903-884-3833.

Ray Roberts Lake SP/Isle Du Bois Unit

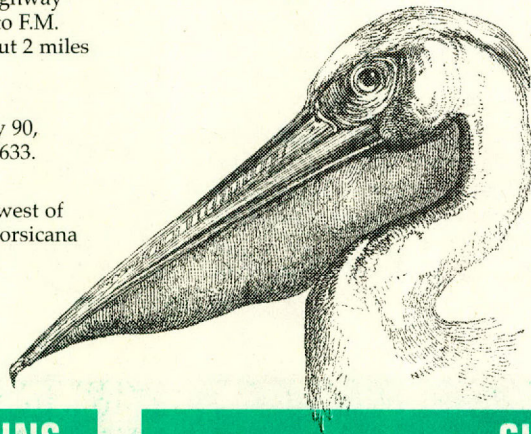
In Denton County on F.M. 455 between Pilot Point and Sanger, 2 miles east of the Ray Roberts Lake Dam, 817-686-2148.

Richland Creek WMA

In Freestone and Navarro counties about 28 miles east of Corsicana, and 31 miles northwest of Palestine on U.S. Highway 287, 903-928-2251.

Washington-on-the-Brazos SHP

In Washington County 21 miles northeast of Brenham. From Brenham, take State Highway 105 to F.M. 912. From Navasota, take State Highway 105 west 8 miles to F.M. 1155, 409-878-2214.



SOUTH TEXAS PLAINS

Bentsen-Rio Grande Valley SP

In southwestern Hidalgo County near Mission. Take U.S. Highway 83 to Mission, continue west to the exit on Inspiration Road, travel 3 miles west on Business 83 to F.M. 2062. Continue south 3 miles to park entrance, 210-585-1107 or 210-585-0902.

Chaparral WMA

In La Salle and Dimmit counties 8 miles west of Artesia Wells on F.M. 133, 210-676-3413.

Choke Canyon SP/Calliham Unit

In McMullen and Live Oak counties about 70 miles south of San Antonio. On the north side of State Highway 72, about 8 miles west of Three Rivers, 512-786-3868.

Goliad SHP

One-half mile south of Goliad in Goliad County. From the junction of U.S. Highway 59 and 183 go south on U.S. Highway 183. Park is on west side of road, 512-645-3405.

Atkinson Island WMA

Off Morgan's Point on the Houston Ship Channel; accessed by boat only, 409-736-2551.

Candy Cain Abshier WMA

In far southwestern Chambers County at Smith Point; from I.H. 10, take State Highway 61 south; turn south again on F.M. 562, go to Smith Point, 409-736-2551.

Eagle Lake

In Colorado County, about 18 miles southeast of Columbus, on alternate U.S. Highway 90, 409-234-2780.

Guadalupe Delta WMA

In Calhoun County approximately 15 miles southwest of Port Lavaca on south side of State Highway 35, 512-576-0022.

Las Palomas WMA/Longoria Unit

In Cameron County 5 miles north of Santa Rosa on Ranch Road 506, 210-383-8982.

Mad Island WMA

In Matagorda County. Take State Highway 35 west of Bay City approximately 12 miles to

PINEYWOODS

Caddo Lake SP & WMA

In Harrison County 15 miles northeast of Marshall. Take State Highway 43 north to F.M. 2198, turn east and travel about 3/4 mile to Park Road 2, 903-679-3351.

Martin Dies, Jr. SP/Angelina Neches/Dam B

In Jasper County between Woodville and Jasper on U.S. Highway 190, 409-384-5231.

Village Creek SP

In Hardin County 10 miles north of Beaumont in Lumberton. From Beaumont, take U.S. Highway 69 north towards Lumberton, take Mitchell Road exit just before the U.S. Highway 69/96 north split, turn right onto Mitchell Road take an immediate left onto Village Creek Parkway and go approximately 2 miles. Turn right on Alma Drive, cross tracks and turn left. Go approximately .4 mile and turn left into park, 409-755-7322.

White Oak Creek WMA

In Morris County 3 miles west of Naples on State Highway 77, 903-884-3833.

PANHANDLE PLAINS

Caprock Canyons SP

In southeastern Briscoe County near Quitaque. The park is bordered on the north by State Highway 256, the entrance is on the south and accessible to Quitaque on Ranch Road 1065, 806-455-1492.

Fort Griffin SHP

In Shackelford County about 15 miles north of Albany on U.S. Highway 283, 915-762-3592.

Lake Brownwood SP

In Brown County. Take Park Road 15 east off State Highway 279 and travel 5 miles to park entrance, then 1 mile to park headquarters, 915-784-5223.

GULF COAST

F.M. 1095. Turn south (left) on F.M. 1095, travel approximately 12 miles, where F.M. 1095 makes a sharp right turn. Proceed .8 mile past sharp turn, then turn left onto paved road with Mad Island WMA sign, proceed 3 miles to T-intersection, turn left and proceed approximately 2 miles on unpaved road to gate. Pass through gate and follow signs for 3 miles to WMA and check station, 512-576-0022.

Matagorda Island SP

In Calhoun County, about 50 miles southeast of Victoria; park headquarters, dock and information center at Port O'Connor, 512-983-2215.

Peach Point WMA

In Brazoria County 10 miles east of Brazoria or 8 miles west of Freeport on State Highway 36, then 1 mile south to check station, 512-576-0022.

Welder Flats Coastal Preserve

In Calhoun County at the junction of the Victoria Barge Canal with the Gulf Intracoastal Waterway. Boat access only, 512-576-0022.

WILDFLOWERS

NATIVE AMERICAN HISTORY

HILL COUNTRY

Honey Creek SNA Ethnobotany Walk - March 23; April 27. Hike along Honey Creek Canyon and learn native plant identification and their cultural uses for food, medicine, and fiber. 9-11 a.m., fee \$2 per person, \$5 per family, guide park naturalist P. Solis, 210-438-2656.

Wildflower and Plant Identification Walk - April 13. Walk along Honey Creek Canyon and learn about native spring wildflowers and plants. 9-11 a.m., fee \$2 per person, \$5 per family, guide V. Rosseling, 210-438-2656.

PRAIRIES AND LAKES

Cleburne SP Wildflower Slide Presentation - April 26. See the beautiful wildflowers found throughout the seasons in the park. Bring a lawn chair. 8-9:30 p.m., guide interpretive ranger D. Owens, 817-645-4215.

Mother Neff SP Wildflower Identification - April 13. Stroll through the first state park and learn about the flowers that abound in the spring. As weather permits. 1-3 p.m., fee TCP members free; general \$2 adults, guide botanist Dr. W. Holmes, 817-853-2389.

HILL COUNTRY

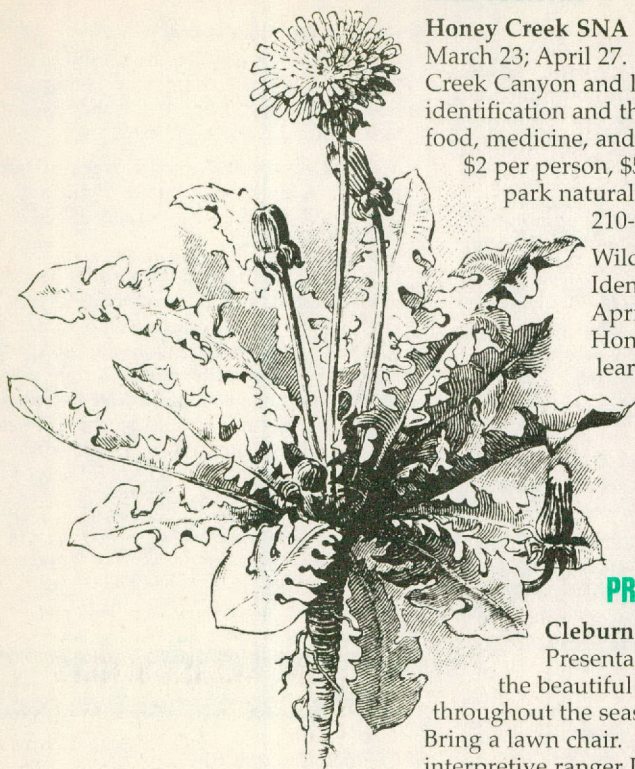
Kerrville-Schreiner SP Native American Ecology - March 23. Using an authentic teepee and full Native American dress, Dan Simpson (of Pawnee heritage), will explain the ecology as it pertains to the Native American. 5:30-7:30 p.m., fee \$1 per person 12 and over, reservations required, guide D. Simpson, 210-257-5392.

Hill Country Native American History - March 30. Dan Simpson will talk about the history of Native Americans who live in and around the hill country. He uses full Native American dress and will be assisted by a mountain man. 5:30-7:30 p.m., fee \$1 per person 12 and over, reservations required, guide D. Simpson, 210-257-5392.

PRAIRIES AND LAKES

Cleburne SP Archeology Awareness Program - April 6. Discover the importance of archeology, artifacts, sites, laws and the proper treatment of archeological sites and artifacts. Bring a lawn chair. 10-11:30 a.m., guide J. Smith, steward of the Texas Archeological Society, 817-645-4215.

Eisenhower SP Digging the Past-Introduction to Archeology for Students 8-11 - April 20. Discover the exciting world of archeology. Explore the throwing stick known as the atlatl. 10 a.m.-3 p.m., \$10 per student, reservations required, guides archeologist R. Ralph and archeology steward R.C. Harmon, 903-465-1956. ♻️



PASSPORT VALUESSM

Longhorn Cavern State Park With each current TCP, you can purchase a Longhorn Cavern tour ticket for \$5, discounted from the regular \$6.50 price. For children age 5 through 12, the ticket price is \$4, and children age 4 and under are free. Call 512-756-6976 for recorded information on times and tours.

Running 'R' Ranch in Bandera offers Passport members discounts on its horseback rides. When you take advantage of this special offer, you'll have the opportunity to explore the Hill Country SNA during your ride. For more information, call Charles "Doo" Robbins at 210-796-3984. ♻️

TEXAS TRAVEL COUNSELORS
...are waiting for your call!

Would you love to get back to nature, but you also want air-conditioning or heating, a shower and a bed? Where to stay? Call on a helpful Texas Travel Counselor for that information.

After checking a map and locating a city near your destination, call the number below and ask for a list of possible accommodations in the area. In addition, they have late breaking news about points of interest, attractions, routes and road conditions AND (as if that wasn't enough!) they will send you a copy of the *Texas State Travel Guide*, *Official Texas Map*, *Texas Events Calendar* and the *Texas Accommodations Guide!*

Open almost every day from 8 a.m. to 9 p.m.
 (Closed New Year's Day, Thanksgiving Day, Christmas eve and Christmas Day)

1-800-452-9292

A service of the Texas Department of Transportation which operates eleven Travel Information Centers.

SCHEDULE YOUR OWN OUTINGS

Atkinson Island WMA

Unvegetated beach areas. No facilities, 409-736-2551.

Big Bend Ranch SP

Hiking, backpacking and back country camping are available north of Highway 170. TCP or daily entrance fee is acceptable for both north and south of Highway 170. For information call Big Bend Ranch Complex office at 915-229-3416 from 8 a.m. to 5 p.m.

Candy Cain Abshier WMA

Area primarily for birdwatching and nature study. No facilities, 409-736-2551.

Colorado Bend SP

Wildlife viewing at baited area, predawn to noon or until dusk if others not waiting to use the blinds. Reservations available but not required. Limited number of blinds make it necessary to only accept reservations in person at park headquarters, \$2 per person activity fee, 915-628-3240.

Davis Mountains SP

Experience back country hiking in the Davis Mountains, 8-10 mile trail climbs to a spectacular overlook with a 360° panorama. TCP or \$2 activity fee per person. Reservations not required, 915-426-3337.

Devils River SNA

Choice of two tours given upon request by reservation only. Fee of \$10 per person plus TCP is required of individuals 17 years and older. Tour A will include a visit to an archeological pictograph site and Indian shelter which will involve some hiking. Tour B is a scenic drive through Dolan Creek Canyon and a visit to the springs on the Devils River. Primitive camping available. Group barracks lodging for 10 people and dining hall facility available for rent. Call 210-395-2133 for tour reservations, 512-389-8900 for facility reservations.

Granger WMA

Approximately 35 miles of trails crisscross the Blackland Prairie accessible by entering at TPWD registration boxes 1-7 around Granger Lake. Tall prairie grasses, fishing and birding (see if you can spot a ring-necked pheasant) await the adventurous hiker and mountain biker. Pick up area maps at Corps of Engineers headquarters at the dam, 512-859-2668.

Gus Engeling WMA

Two interpretive walking nature trails and one driving wildlife demonstration tour is open throughout the year except during special permitted gun hunts, 903-928-2251.

Kickapoo Cavern SNA

Birdwatching and nature tours upon request. Primitive cavern tour by special arrangement. Groups encouraged, bunkhouse lodging for 14 people and kitchen available. Please make reservations at least one week in advance. TCP required per person (17 years or older) to enter park, 210-563-2342.

Lower Neches WMA/Bessie Heights Unit

Accessible by boat only. No facilities, 409-736-2551.

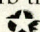
Richland Creek WMA

Six miles of driving and walking trails open except during special permitted gun hunts. Observe wading birds from shallow-water marsh compartments on the 4,000-acre north unit between April and August. No facilities, 903-928-2251.

Walter Buck WMA

Activities coordinated through South Llano River SP, 915-446-3994.

Welder Flats Coastal Preserve

This area is entirely submerged land, so access is by boat. ALL shoreline area is privately owned and is NOT part of the preserve. Please do not trespass on private land and do not disturb the whooping cranes, 512-576-0022. 

GAME WARDEN OFFICES

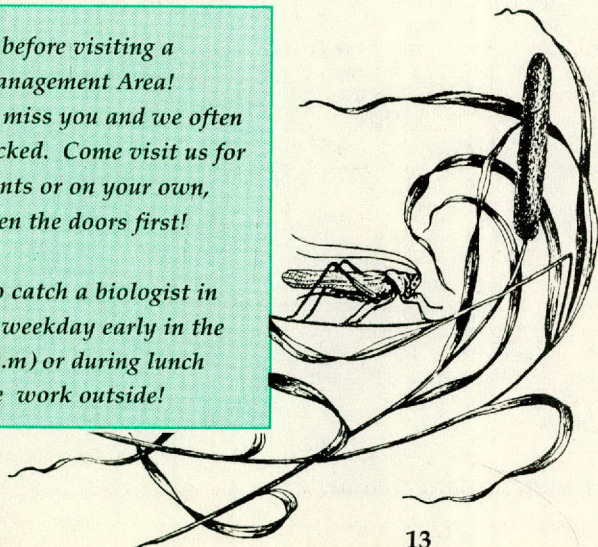
You must go in person to purchase a Passport or a hunting or fishing licence from a game warden office. They can not take sales over the telephone. This list of phone numbers is provided so you can call an office near you and get the address for the office.

| | |
|----------------|----------------------|
| Abilene | (915)673-3333 |
| Amarillo | (806)379-8900 |
| Beaumont | (409)892-8666 |
| Brownsville | (210)546-1952 |
| Brownwood | (915)646-0440 |
| Bryan | (409)260-1372 |
| Corpus Christi | (512)289-5566 |
| El Paso | (915)598-4741 |
| Fort Worth | (817)831-3128 |
| Freeport | (409)233-7968 |
| Galveston | (409)744-4071 |
| Garland | (214)487-8868 / 8694 |
| Houston-North | (713)931-6471 |
| Houston-South | (713)645-0212 |
| Kerrville | (210)257-7611 |
| Lubbock | (806)744-0213 |
| Lufkin | (409)632-1311 |
| Midland | (915)520-4649 |
| Mt. Pleasant | (903)572-7966 |
| Rockport | (512)790-0312 |
| Rusk | (903)683-2511 |
| San Angelo | (915)651-4844 |
| San Antonio | (210)633-3220 |
| Temple | (817)742-2360 |
| Tyler | (903)534-0388 |
| Victoria | (512)575-6306 |
| Waco | (817)799-2446 |
| Wichita Falls | (817)723-7327 |

Call ahead before visiting a Wildlife Management Area!

We don't want to miss you and we often leave our gates locked. Come visit us for our special events or on your own, but let us open the doors first!

The best time to catch a biologist in an office is on a weekday early in the morning (8-9 a.m.) or during lunch because we work outside!





TEXAS PASSPORT ADVENTURES

TEXAS PARKS AND WILDLIFE

NATURE TOUR PROGRAM

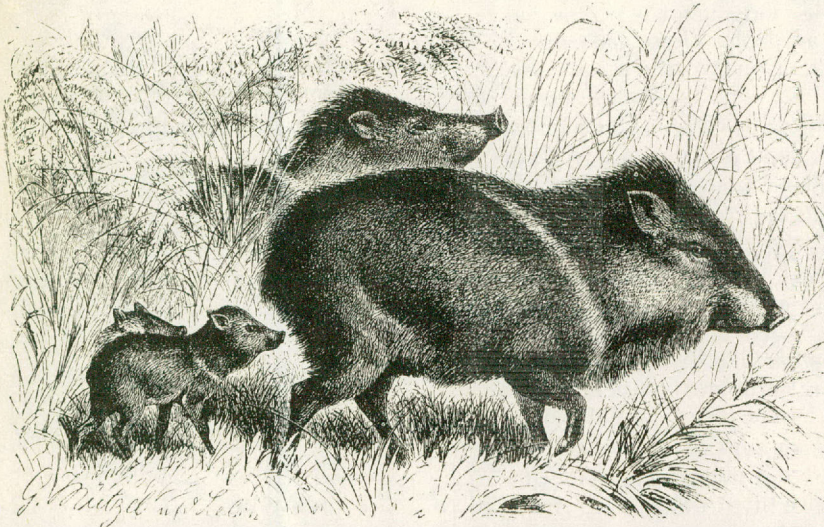
TEXAS PASSPORT ADVENTURESSM

Experience Texas like never before...hike backcountry trails, join a real cattle drive, survey the nighttime sky, windsurf warm Gulf waters, ride a steam-powered train. Along the way, learn skills and explore nature with expert guides and naturalists. This is the exciting new Texas Passport AdventuresSM program, an extension of the Texas Conservation Passport.

Travel agents, tour operators, landowners and private industry have teamed up with TPWD in an unprecedented venture to offer 65 exciting nature tours throughout

Texas. Most Passport Adventure travel packages are for three-day, two-night trips and include meals, lodging, on-site transportation, instruction, guide services and special interpretive programs by wildlife biologists, botanists, naturalists and other specialists.

Prices for the tours range from \$85 to \$225 per day, depending on amenities. Passport holders receive a \$25 discount off the total tour price. To request a free Texas Passport Adventures catalog, call 1-800-841-6547 or FAX your name and address to 1-512-389-8029. ♻️



TEXAS PARKS AND WILDLIFE COLLECTION



Tour Texas

Roads of Texas

Newly revised-1995. A road atlas and more, containing maps showing interstates and backroads, picnic grounds, parks where Texas history was made, little airports, country churches, remote cemeteries, ghost towns and quiet streams. Forward by Leon Hale. 11 1/4" x 15 1/2", 170 pages, soft cover. 1019 \$14.95

Tours of Texas State Parks Video

Reporter Bob Phillips traveled a half-million miles on Texas highways and visited 22 state parks to highlight the spectacular landscapes protected by Texas Parks and Wildlife. This tremendously popular video features segments from the award-winning Texas Hill Country Reporter TV show. 88 minutes. 6018 \$19.95

Call 1-800-786-8644 to order.

Texas Conservation Passport Journal is your passport to the real Texas.

Until May 1, 1996 Texas Conservation Passports cost \$25 each and give you:

- this *Passport Journal* with listings of events and explorations,
- discounts on some event fees,
- Passport ValuesSM with selected retailers,
- free vehicle entry to Texas State Parks,
- a discount on your subscription to *Texas Parks & Wildlife* magazine,
- guided access to WMAs and other undeveloped lands.

We want to hear from you!

Please send your comments, complaints and suggestions to:

Texas Conservation Passport
4200 Smith School Road
Austin, TX 78744
FAX 1-512-389-8029

If you would care to use any of our published information contact us. We are:

Emily Carter, Editor
Barbara Stratton, Events Editor
Dawn Dittman, Marketing Director
Linda Adkins, Creative Director
Linda Wells, Graphic Designer

TEXAS CONSERVATION PASSPORT JOURNAL (ISSN 10832823) (USPS 012968) is published quarterly by the Texas Parks and Wildlife Department, 4200 Smith School Rd., Austin, TX 78744. The \$25 membership fee includes the \$4.95 annual cost of this publication. Second-class postage paid at Austin, TX.

POSTMASTER:

Send address changes to
Texas Conservation Passport Journal
4200 Smith School Rd.
Austin, TX 78744



PASSPORT TO TEXAS

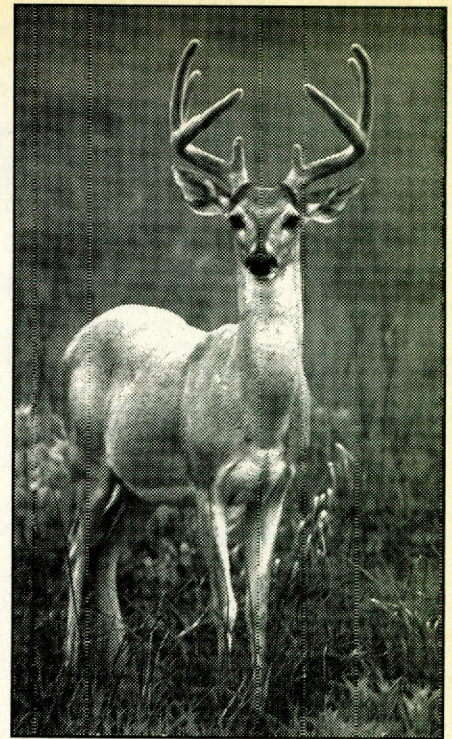
TEXAS PARKS AND WILDLIFE

Your Radio Guide to the Great Texas Outdoors

Our new radio series "Passport to Texas" aired on January 1, 1996! Listen for well-known radio personality Joel Block to host our weekday 90-second feature about Texas' outdoors.

Check this listing for a station near you.

| CITY | RADIO STATIONS | AIRTIMES |
|-----------------|----------------|---------------------------------|
| Abilene | KNTS/AM 1470 | 8:15 a.m. |
| Austin | KWTR/AM 1530 | 25 after the hour from 8-4 |
| Big Spring | KBST/AM 1490 | 11:30 a.m. |
| Brenham | KWHI/AM 1280 | 6:50 a.m. |
| Bridgeport | KBOC/FM 96.7 | 3:20 p.m. |
| Bryan | WTAW/AM 1150 | 5:45 p.m. |
| Center | KDET/AM 930 | 8:25 a.m. |
| Center | KDET/FM 102.3 | 7:30 a.m. |
| Columbus | KULM/FM 98.3 | 7:20 a.m., 5:20 p.m. |
| Crockett | KIVY/AM 1290 | 9:15 a.m. |
| Crockett | KIVY/FM 92.7 | 9:15 a.m. |
| Eastland | KEAS/AM 1590 | 8:30 a.m. |
| Eastland | KEAS/FM 97.7 | 8:30 a.m. |
| El Campo | KULP/AM 1390 | 2:05 p.m. |
| Fairfield | KNES/FM 99.1 | 7:49 a.m. |
| Galveston | KGBC/AM 1540 | 1:40 p.m. |
| Harlingen | KMBH/FM 88.9 | 4:58 p.m. |
| Hereford | KPAN/AM 860 | 2:50 p.m. |
| Hereford | KPAN/FM 106.3 | 2:50 p.m. |
| Houston | KTRH/AM 740 | 10:40 a.m. |
| La Grange | KVLG/AM 1570 | 2:50 p.m. |
| La Grange | KBUK/FM 104.9 | 2:50 p.m. |
| Marshall | KCUL/AM 1410 | 7:15 a.m. |
| Marshall | KCUL/FM 92.3 | 7:15 a.m. |
| McAllen | KHID/FM 88.1 | 4:58 p.m. |
| Midland | KCRS/AM 550 | 6:43 a.m., 1:43 p.m., 6:43 p.m. |
| Mineola | KMOO/FM 96.7 | 5:20 p.m. |
| Monahans | KLBO/AM 1330 | 8:20 p.m. |
| Paris | KPLT/AM 1490 | 12:00 p.m. hour |
| Pecos | KIUN/AM 1400 | 10:30 a.m. |
| San Augustine | KCOT/FM 92.5 | 7:30 a.m. |
| Sulphur Springs | KSST/AM 1230 | 11:40 a.m. |
| Temple | KTEM/AM 1400 | 8:46 a.m. |
| Texarkana | KCMC/AM 740 | 12:15 p.m. |



JIM WHITCOMB

White-tailed deer (*Odocoileus virginianus*) hold a place of distinction in the hearts and minds of many Texans. Early in the 1920s, the herd was at its all-time low, but cooperation between state biologists and private landowners to restore habitat and to restock it with healthy animals has resulted in one of the 20th century success stories. It is estimated in 1991 that the deer population exceeded 3.1 million animals.



Passport to Texas radio series is funded in part by a grant from the Sport Fish & Wildlife Restoration Programs in Texas! Your purchase of motorboat fuel or fishing and hunting equipment supports Texas wildlife and sport-fish restoration programs as well as boating-access facilities.

Producer: Kathleen Jenkins,
P.O. Box 5966, Austin, TX 78763.
Phone 512/454-1922 FAX 512/454-2552



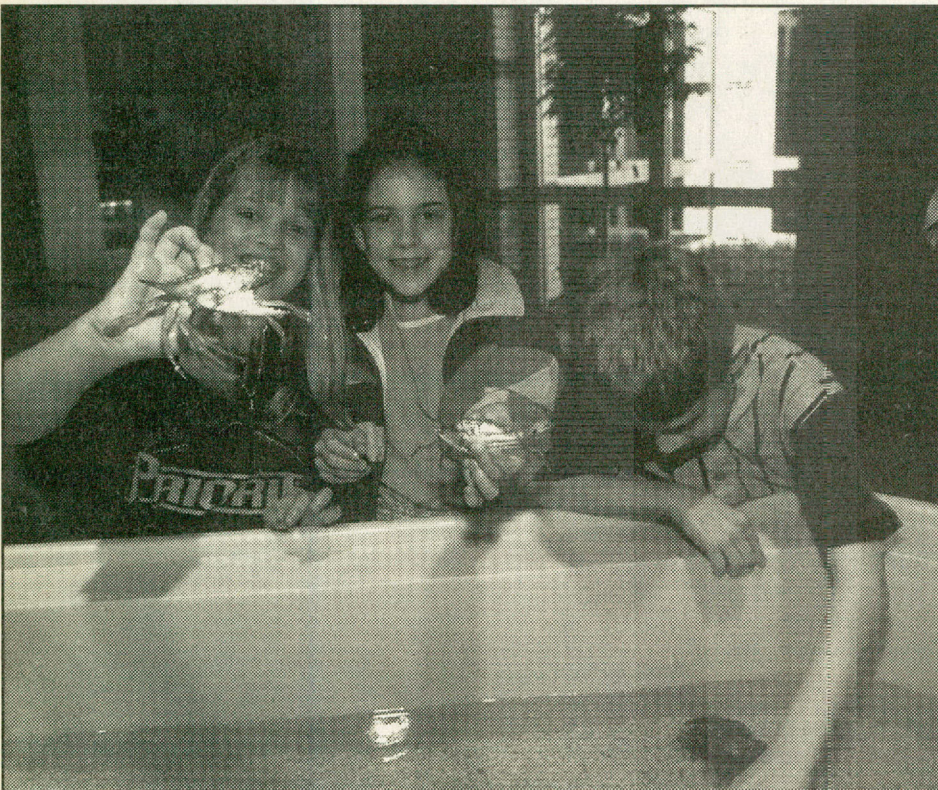
SEA CENTER TEXAS

OPENED IN LAKE JACKSON ON MARCH 8, 1996

Sea Center Texas is a world-class marine fisheries center boasting a hatchery with the capacity to produce 20 million red drum fingerlings annually. But it is also an aquarium and education center where visitors will gain insights into Coastal Bay Ecosystems through interpretive displays. The 15,000-square foot visitor's center will offer free daily tours.

Sea Center Texas is a partnership among TPWD, The Dow Chemical Company and the Gulf Coast Conservation Association. The project was supported through funding from the Federal Aid in Sport Fish Restoration Program. TPWD will operate and manage Sea Center Texas.

**For more information, call 409-292-0100 or
write to Sea Center Texas, 300 Medical Dr., Lake Jackson, TX 77566.**



One of two saltwater "touch tanks" lets young visitors to Sea Center Texas get a hands-on experience with marine wildlife such as blue crabs, hermit crabs, starfish, urchins, clams, snails and sponges.

NEW!

Gold and Silver Passport membership options - page 1.

NEW!

Passport to Texas, a radio series that explores the real Texas with outdoor professionals from game wardens to park managers to wildlife biologists - page 15.

NEW!

Texas Passport Adventures, 65 nature tours and packages to take you out to the real Texas for a hands-on experience - page 14.

TEXAS
CONSERVATION
PASSPORT
JOURNAL
4200 Smith School Road
Austin, TX 78744



STAFF PHOTO



Dispersal of the publication conforms with Texas State Documents Depository Law, and it is available at Texas State Publications Clearinghouse and/or Texas Depository Libraries.