

P400.6
P268
11:04

PASSPORT

Government Publications
Texas State Documents

FEB 01 2003

Depository
Dallas Public Library

Journal

Vol. 11, No. 4 • October – December 2002

It Won't Be the Same Without *You!*

Lone Star Legacy Weekend – October 19-20

When the days and nights start cooling down, it's time for an outdoor getaway. And, what could be better than an October trip to your favorite park? Come on out and join our special activities during Lone Star Legacy Weekend.

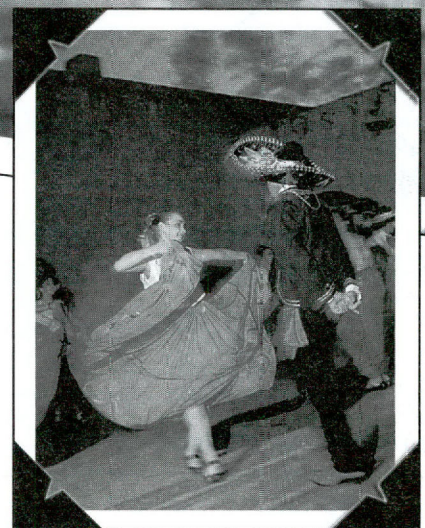
You can see a historical re-enactment, take a guided nature hike, see a vintage car show, eat a wild game dinner, or take to the trails on a mountain bike. Events and activities are planned at most state parks and historic sites. Check out page 12 for a partial list of happenings or find the entire list on-line at: tpwd.state.tx.us/lslw/.

As a Texas Conservation Passport member, you already get into the parks free. But once a year, on Lone Star Legacy Weekend, we open the gates and let everyone else in free too.

So why not pass on this copy of your *Journal* to neighbors or friends to let them know about the free weekend and introduce them to your favorite parks and historic sites?

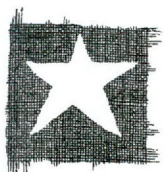


Our thanks to Toyota for underwriting all visitor entry costs. While entrance fees are waived, other fees will be charged for guided historic tours, overnight camping and tickets to the Texas State Railroad.



Mountain bikers will be gathering at Garner SP for the special Lone Star Legacy event, see page 12.

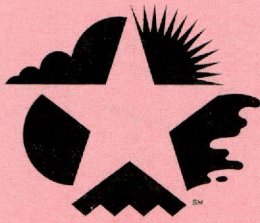
Folklorico Dancers, at Fort Leaton SHS during the LSL Weekend last year.



THE ENDOWMENT FUND The Lone Star Legacy endowment campaign began in 2000 as a way to benefit state parks. The free weekend gives visitors an option to make donations to an endowment fund. So far, more than \$9 million have been raised.



Scenic Road Trips



TEXAS
CONSERVATION
PASSPORT™

CONTENTS

SCENIC ROAD TRIP	2
TRAVELER'S TALES	3
<i>Seasonal Trips</i>	
PICNIC PLACES	4
<i>Franklin Mountains SP</i>	
<i>Fort McKavett SHS</i>	
BIRD CALLS	5
<i>Last Chance Forever</i>	
NATURALIST	6
<i>Texas Rivers</i>	
STATE PARK HISTORIAN	7
<i>Finding Fort Lancaster SHS</i>	
DRIVE ACROSS TEXAS	8-9
<i>Travel Directions</i>	
<i>Phone Numbers</i>	
PASSPORT PEOPLE	10
TRAILBLAZER	11
<i>Lake Mineral Wells SP</i>	
<i>and Trailway</i>	
FIELD TRIPS	12-13
<i>Lone Star Legacy Events</i>	
<i>Halloween Events</i>	
<i>Christmas Events</i>	
PASSPORT VALUES	14
<i>Texas Freshwater</i>	
<i>Fisheries Center</i>	
AT YOUR SERVICE	15
<i>Getting in Touch</i>	
<i>Park Reservations</i>	
<i>Wildlife Management Areas</i>	
<i>Public Hunts on</i>	
<i>State Park Lands</i>	
WEEKEND ESCAPES	16
<i>Thanksgiving in Big Bend</i>	

Trans-Pecos Landscapes

U.S. 90 and F.M. 170

Wide-open spaces and panoramic vistas, reminiscent of our frontier heritage, distinguish the Trans-Pecos landscapes of the Chihuahuan Desert. After a long drive west on U.S. 90, travelers arrive at the Pecos River High Bridge overlook. The pull out affords breath-taking views and crossing it marks the passage into the Trans-Pecos and Big Bend area.

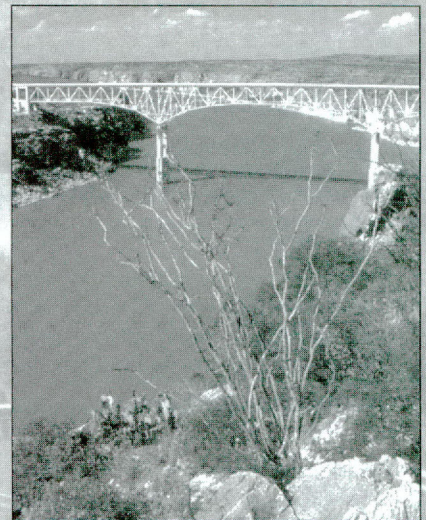
Much further west, in the heart of the Big Bend, F.M. 170 dips and curves along the course of the Rio Grande between Presidio and Lajitas. Here the drive goes through the southern edge of the Big Bend Ranch SP. Hikers can access short trails off F.M. 170 and picnickers can find tables and shade at the "teepee" roadside park.

Known as El Camino del Rio, or River Road, this stretch of highway has been called one of the prettiest drives in America by National Geographic.

On-line: www.traveltex.com and check the Driving Tours for West Texas.



Picnic at the colorful teepee roadside park.



Pecos River High Bridge on U.S. 90.



River Road along the Rio Grande River.



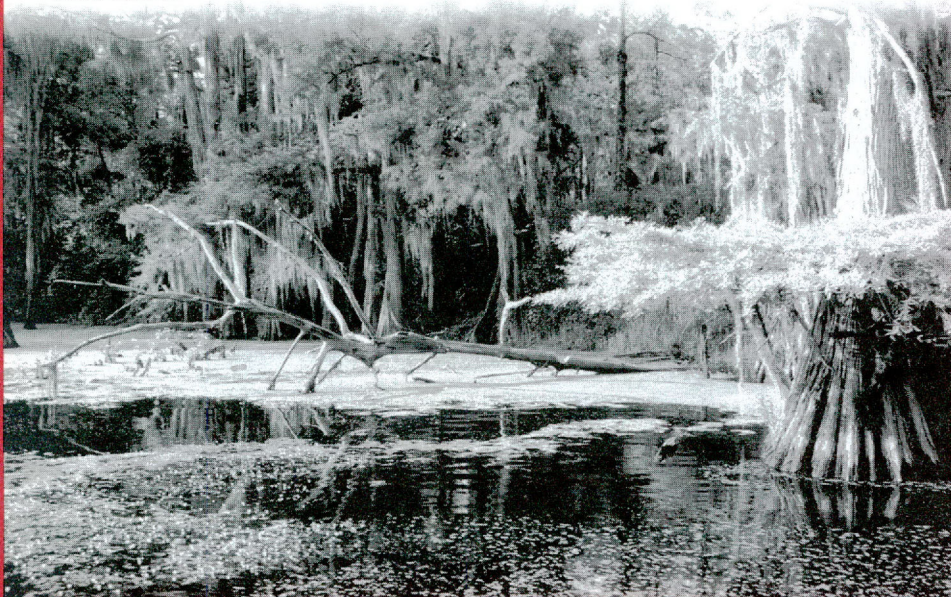
Traveler's Tales

The first fishing trip I can remember occurred about the time I was in the first grade. My father was fishing in the front of the boat and his presence gave me a sense of safety in the swampy Caddo Lake where roots of the cypress trees emerge from muddy waters. Because I spent many childhood nights in hunting and fishing camps with my family, I gained a genuine passion for the outdoors. We camped everywhere, explored everything and visited historic sites from Texas to Canada to Georgia. So, by the time I was in high school, I didn't think it unusual to be tramping across a field toward the Paluxy River to wade around in ankle deep water searching for dinosaur tracks. But now I am surprised. Of all possible careers, who would have thought I would be here at Texas Parks and Wildlife Department writing about Caddo Lake and Dinosaur Valley state parks? My career is, in fact, a legacy from my father and mother who thought nothing of taking us out to look at stars, or catch small garden snakes or build camp fires.

It pleases me greatly to write about the legacy of Texas State Parks and to invite you to join us on Lone Star Legacy Weekend. Bring the kids. You do not know now, and you cannot guess, just what good will come of such simplicity.

Emily A. Carter
Editor

Caddo Lake SP



TELL YOUR TRAVEL TALES!

Write and tell us your legacy story in a letter of about 150 words. Include your name, address and where you purchased your TCP. Write: *Texas Conservation Passport Journal*, 4200 Smith School Road, Austin, TX 78744; FAX: (512) 389-8029; E-mail: passport@tpwd.state.tx.us

SEASONAL TRIPS

October

Lone Star Legacy Weekend, October 19 and 20. Free entry for the whole weekend allows us to showcase Texas State Parks. Come on out with your family and friends to celebrate the legacy that was yesterday and will be tomorrow. It won't be the same without *you!* Find events on page 12, at **800-792-1112**, **menu option 3** and on-line: <http://www.tpwd.state.tx.us/lslw>

November

In November, the **Big Bend Region** rewards campers and hikers with comfortable temperatures. You can expect hot days and cool nights down on the river. And, at the higher, mountain elevations, expect 60s and 70s in the day and down right frigid nights. Take your turkey and go out west for Thanksgiving... it's the best time of year for the trip (see back page). <http://www.tpwd.state.tx.us/park/bigbend/>

December

Commemorate December 7, 1941 when the Japanese attacked Pearl Harbor at the **Battleship Texas SHS** (281) 479-2431. The ceremony is sponsored by the Texas Commandry of the Naval Order of the United States. Members of the Pearl Harbor Survivors Association will attend. Dec. 7, 11 a.m. to noon. Ceremony is free, but fees are charged for ship tours. <http://www.tpwd.state.tx.us/park/battlesh/>

Park reservations, page 15



DAY TRIPS

Franklin Mountains SP Events

(915) 566-6441

Attend the free Outdoor Expo 2002 in the Tom Mays Unit. The Transmountain Highway takes you directly to the Expo. Exhibitors includes the El Paso Zoo, the Franklin Mountains Wilderness Coalition, American RV, the Becoming an Outdoors-Woman program, the Master Naturalist program and the University of Texas at El Paso. There will be camping demonstrations and wildlife exhibits too. Things to do will include taking a guided tour, riding in a bike rodeo, or rock climbing on a practice climbing wall and Texas track printmaking. Food and drink vendors will be available. The event is from 10 a.m. to 5 p.m. on Oct. 19 and 20. <http://www.tpwd.state.tx.us/park/franklin/>

Fort McKavett SHS Events

(915) 396-2358

Take in a Star Party amid the ruins of the old fort. An afternoon lecture will be followed by stargazing when the sky gets dark. Powerful and sophisticated telescopes will be provided for you by the Johnson Space Center Astronomical Society. The lectures begins at 3 p.m. on Oct. 5. Fees are free to TCP members and senior citizens; \$2 adults, \$1 children 12 and under. <http://www.tpwd.state.tx.us/park/fortmcka/>



Picnic Places

take a day trip to the country

Franklin Mountains State Park

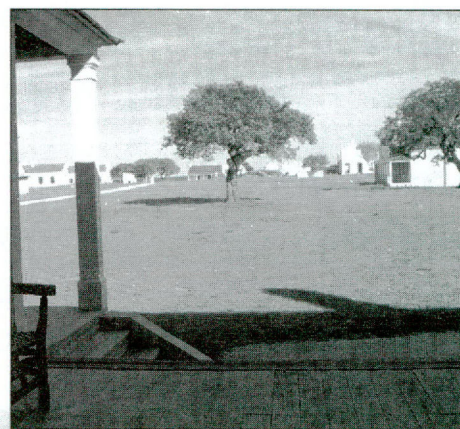
Picnic in a Chihuahuan Desert mountain range located entirely in the city of El Paso. Hike mountain trails



that tend to be rugged – this is not a place for a casual stroll. Mountain bikers love the challenge of these trails and campers can find limited tent and self-contained RV sites. Then, you can say you visited the largest urban park in the nation!

Fort McKavett State Historic Site

Soldiers were posted here beginning in March, 1852, and called it Camp San Saba because it sits high on a hill overlooking the headwaters of the San Saba River Valley. The laundresses and hangers on, the ones that always accompanied soldiers, gathered into a settlement below the hill called Scabtown. The fort was abandoned before the Civil War but reestablished in 1868 as Fort McKavett. Picnic in this quiet and serene place and tour the old fort buildings.



The ruins at Fort McKavett.





Bird Calls

Sky Hunters

Birds of Prey

Their flashing talons, sharp beaks and great speed give raptors mighty weapons for bringing down birds on the fly, capturing fish near the water's surface and swooping down on field mice and even rabbits.

These birds of prey include falcons, owls, vultures, eagles and hawks. All of them feed high on the food chain. Consequently, they suffer from toxic pesticides and pollutants that have accumulated in the meat of their prey. In fact, the use of DDT and heavy metal poison, in conjunction with the loss of habitat, nearly wiped out our North American bald eagles.

By 1972, when DDT was banned, there were fewer than 450 breeding pair in the continental United States. Sadly the national emblem of the United States was placed on the endangered species list in 1978.

But, the North American bald eagle has one of the greatest come back stories in history. With the help of federal protection, conservation education and the declining use of DDT, the eagles survived. Now the bald eagle population is estimated at 100,000, including the birds in Alaska, and has been moved from the endangered list to the threatened list.

Harris's Hawk



LAST CHANCE FOREVER – RAPTOR CONSERVATION

Conservation education is, in large measure, responsible for the growing population of our once endangered North American bald eagle. **Master Falconer, John Karger**, is a leader in providing public education in his Last Chance Forever – Birds of Prey Demonstration. Live eagles, hawks and other raptors take flight during his program while he recounts their story and tells about the work of the Last Chance Forever, Birds of Prey Conservancy.

It's a non-profit organization dedicated to the rehabilitation and release of injured and orphaned raptors such as: hawks, owls, eagles, falcons and vultures. Since it's incorporation in 1978, Last Chance Forever (L.C.F.) has been responsible for treating thousands of birds of prey, including endangered species. Generally up to 80 percent of the birds taken under L.C.F. care are released back to their natural home in the wild. For more information – write to: P.O. Box 460993, San Antonio, TX 78246-0993, call: (210) 499-4080 or online: <http://lastchanceforever.org/>

GO BIRDING!

Fall Migration Hawk Watch –

The Mission River is a major migration path for hawks, kites and falcons. Watch raptors by the thousands as they take off from their overnight roosts on the river and watch kettle after kettle forming throughout the day. American swallow-tailed kites, merlins, anhingas, harriers and broadwings are among the species in the tally. All-day trip includes lunch and is guided by an experienced birder. From 7:30 a.m. to 3 p.m. on Oct. 5. Fees are \$42.53 for TCP members, \$46.43 for non-members; reservations required. **Fennessey Ranch** (361) 529-6600

Whooping Crane Bus Tour –

Take a scenic bus ride 20 miles down Matagorda Island to observe whooping cranes in their winter habitat. Bring lunch, insect repellent and water. From 9 a.m. to 5 p.m. on Dec. 26. Ferry fees \$10 adults, \$5 children 12 and under; fees in addition to the ferry are \$4 for TCP members, \$8 for non-members, \$4 children 12 and under; reservations required. **Matagorda Island SP & WMA** (361) 983-2215

See Last Chance Forever at...

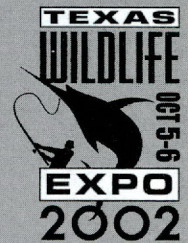
WILDLIFE EXPO

October 5-6, 2002

9 a.m. to 5 p.m.

FREE!

At the Texas Parks and Wildlife Department headquarters in Austin.



At this free outdoor festival you can fish, shoot, kayak, rock climb, mountain bike, see and touch wildlife, learn about outdoor recreation and see and buy the latest in outdoor gear and services. Most importantly, you learn how to help conserve our precious resources. For more information: call (800) 792-1112 or online at: <http://www.tpwd.state.tx.us/expo/expo2002/>



Naturalist

*“...a piece of country,
hunted and fished and
roamed over, felt and
remembered, can be
company enough.”*

– John Graves

Texas Rivers

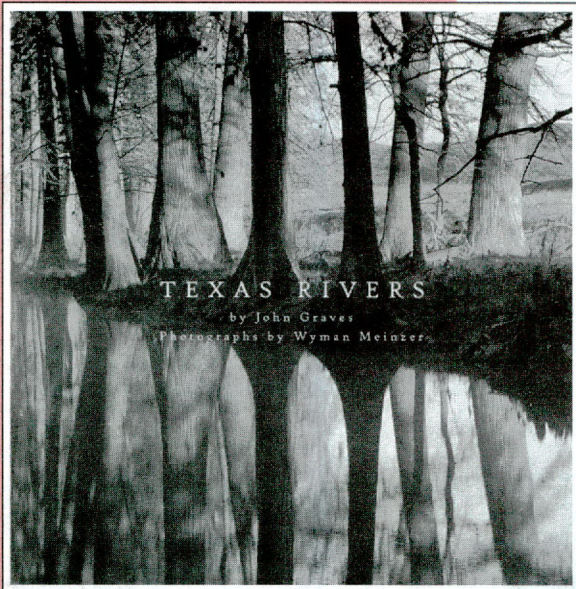
A Comanche war trail across the Pecos River attracted cattle drovers trailing Longhorn herds to northern markets. On reaching the river, thirsty cattle and horses gulped and drank their fill of the salty, alkaline water. It killed so many that skulls and skeletons littering the banks gave a name to the place: Horsehead Crossing.

Each of John Graves’ essays in *Texas Rivers* provides just such singular details. His lilting prose and Texas-style of story telling captures and entrances the reader. The oversized book is remarkable too for Wyman Meinzer’s landscapes. Both realistic and artistic photos convey, not just the breadth of a riverscape, but also an emotional sense of place.

Underlying the stories and the photos is the question of a river’s future. Of the Upper Sabinal, Graves writes: “The area’s young people [are] raised with television and computer and [are] much aware of a wider world... Will they be as protective of what is here as their elders have been, as aware of its mythology?” One of Graves’ friends said that “...after he graduated from Utopia High School, he couldn’t wait to get away... ‘We leave as soon as we can, and then spend the rest of our lives trying to figure out how to get back.’”

This beautiful and thoughtful book asks a contemporary question, “if we go back, will we find the rivers are still free flowing?”

Texas Rivers would be a fine addition to any collection of naturalists writers.



Texas Rivers is available in major bookstores or by phone at (800) 252-3206. It is published by Texas Parks and Wildlife Press and distributed by the University of Texas Press (ISBN #1-885696-38-8, 144 pages, color throughout, \$39.95).

*On the river with Wyman.
To take pictures of a river, you
have to get out on a river.*



© Wyman Meinzer



State Park Historian

FORT LANCASTER SHS

(915) 836-4391

Star Party –

See the stars under the dark skies at the abandoned Fort Lancaster as re-enactors arrive for the big Saturday event. From 7:30 to 9:30 p.m. on Oct. 18.

Annual Living History Day –

Living historians create all the color and excitement of the infantry in period uniforms. A fully mounted cavalry will be there and re-enactors to demonstrate artillery as well as the Texas Camel Corps with live camels. Musicians will be playing music of the period to enliven the portrayal of frontier life. A barbeque lunch is available for a small donation. From 8 a.m. to 5 p.m. on Oct. 19.

Finding Fort Lancaster

On a cold day in 1971, I left Austin heading for historic Fort Lancaster and my first paying job as an archeologist. For many a mile, my VW bug pushed west across the fabled open spaces of Texas. Near Sheffield the road curved sharply, descending into the Pecos River Valley, and I geared down to negotiate the steep grade.

Surrounded by mesa-like slopes, the wild and desolate valley was home to a faithful sentinel: a stone chimney standing in the long abandoned silent ruins. Piles of squared limestone blocks and melted adobe were overgrown with thorny lechugia, spiny Mesquite and prickly pear.

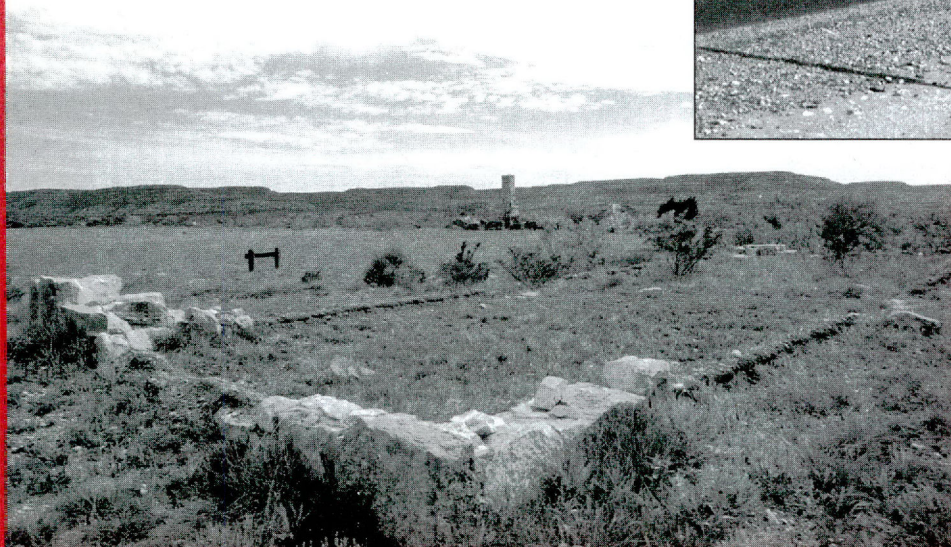
Working as one of a six member archeological crew, I helped clear away the debris to reveal remnant foundations. Inside an officer's quarters, we found charred floor boards in a protected corner. The planks had turned to perfect charcoal replicas of the original boards. I carefully painted them with a preservative while making records of burned door hinges, nails, buttons and other items lost in the fire.

Late in the season, when most of the work was done, I was sent to find the bakery. An old map showed a bakery about where we found a hearth under a pile of rock. Could anything be left of the foundation? I took a whisk broom and started sweeping the desert floor at an angle to the hearth – I was looking for the outline of a wall where logic decreed that it should have been. Slowly it was revealed. A single layer of compacted gravel was all that was left of the long gone adobe brick wall. – *Emily Carter*



Finding Fort Lancaster SHS today is still an adventure. It was bypassed when I.H. 10 was built, but the old route still exists as a scenic loop. The fort is 8 miles east of Sheffield on U.S. Highway 290 in Crockett County.

Fort Lancaster today still looks much as it did when I arrived for the excavation. The old foundation walls have been stabilized and adobe bricks have been added to demonstrate the combination of stone foundations and adobe walls.



Balmorhea SP In Reeves County, 4 miles west of Balmorhea on State Highway 17 to park entrance, (915) 375-2370.

Barton Warnock Environmental Education Center Located in Lajitas. Part of the Big Bend Ranch SP, (915) 424-3327.

Battleship TEXAS SHS In Harris County, 22 miles east of downtown Houston off State Highway 225, go east, then north on State Highway 134 to park entrance, (281) 479-4414.

Bentsen-Rio Grande Valley SP In Hidalgo County, 3 miles south of Mission on F.M. 2062 to entrance, (956) 585-1107 or (956) 585-0902.

Big Bend Ranch SP In Brewster and Presidio counties, 4 miles southeast of Presidio on F.M. 170; entrance at Fort Leaton SHS, (915) 229-3416.

Caddo Lake SP In Harrison County, 15 miles northeast of Marshall off State Highway 43, go north to F.M. 2198, turn east on Park Road 2 to entrance, (903) 679-3351.

Cedar Hill SP In Dallas County, approximately 15 miles southwest of Dallas on Joe Pool Lake and 2 miles northwest of Cedar Hill on F.M. 1382, go south to park entrance, (972) 291-3900.

Davis Mountains SP In Jeff Davis County, about 4 miles northwest of Fort Davis, via State Highway 118 to entrance, (915) 426-3337.

Dinosaur Valley SP In Somervell County, 4 miles west of Glen Rose on F.M. 205/Park Road 59, go 1 mile to headquarters, (254) 897-4588.

EXPO (see pg. 5) In southeast Austin near McKinney Falls SP, 4200 Smith School Rd. Best access is U.S. 183 to McKinney Falls Pkwy, to Burleson Rd., to Smith School.

Fanthorp Inn SHS In Grimes County, 10 miles east of Navasota on State Highway 90 in the town of Anderson, (936) 873-2633.

Fennessey Ranch In Refugio County, between Refugio and Bayside off F.M. 2678. For detailed directions call (361) 529-6600.

Fort Lancaster SHS In Crockett County, 8 miles east of Sheffield on U.S. Highway 290 to park entrance, (915) 836-4391.

Fort Leaton SHS In Presidio County, 4 miles southeast of Presidio on the River Road to F.M. 170, to entrance, (915) 229-3613.

Fort McKavett SHS In Menard County, 23 miles west of Menard; take U.S. Highway 190 west 17 miles to R.M. 864 south to park entrance, (915) 396-2358.

Franklin Mountains SP In El Paso County, in the city of El Paso, west on I.H. 10, exit on the Canutillo/Transmountain Road exit, go east on Transmountain Road for 3.8 miles to park entrance, (915) 566-6441.

Fulton Mansion SHS In Aransas County, 3 miles north of Rockport off State Highway 35, at the corner of Henderson Street and Fulton Beach Road, (361) 729-0386.

Garner SP In Uvalde County, 31 miles north of Uvalde and 7 miles north of Concan on U.S. Highway 83, to park road 29 to entrance, (830) 232-6132.

Goliad SP In Goliad County, 1/4 mile south of Goliad on U.S. Highway 183/77A, to park entrance, (361) 645-3405.

Goose Island SP In Aransas County, 10 miles north of Rockport on State Highway 35 to Park Road 13, then 2 miles east to park entrance, (361) 729-2858.

Indian Lodge-Davis Mountains SP In Jeff Davis County, about 4 miles northwest of Fort Davis, via State Highway 118 to entrance; the lodge is located in Davis Mountains SP, (915) 426-3254.

Lake Corpus Christi SP In San Patricio County, 35 miles northwest of Corpus Christi and 4 miles southwest of Mathis on F.M. 1068, (361) 547-2635.

Lake Mineral Wells SP In Parker County, 4 miles east of Mineral Wells on U.S. Highway 180 to entrance, (940) 328-1171.

Lake Tawakoni SP In Hunt County, east of Dallas. From U.S. Highway 47 turn west on F.M. 2475 to park entrance, (903) 560-7123.

Lake Texana SP In Jackson County, approximately 4 miles from Ganado, between U.S. Highway 59 and F.M. 1593, to entrance, (361) 782-5718.

Longhorn Cavern SP In Burnet County, about 5 miles south of Burnet on U.S. Highway 281 to entrance, (877) 441-CAVE or (512) 756-4680.

Lyndon B. Johnson SP & HS In Gillespie County, 16 miles east of Fredericksburg on U.S. Highway 290 to park entrance, (830) 644-2252.

Magoffin Home SHS In El Paso County, in the city of El Paso, east on I.H. 10, exit on Cotton Street; turn right on Myrtle Street, left on Octavia Street, left on Magoffin Street, home is on the right, (915) 533-5147.

Matagorda Island SP & WMA In Calhoun County, about 50 miles southeast of Victoria. Park headquarters, dock and information center at Port O'Connor, (361) 983-2215.

Monument Hill/Kreische Brewery SHS In Fayette County, 1 mile south of La Grange off U.S. Highway 77 to spur 92, to entrance, (979) 968-5658.

Palo Duro Canyon SP In Armstrong and Randall counties, 12 miles east of Canyon on State Highway 217. From Amarillo, south on Ranch Road 1541, to State Highway 217, go east for 8 miles, to park entrance, (806) 488-2227.

Purtis Creek SP In Henderson and Van Zandt counties, 3 miles north of Eustace off F.M. 316 to entrance, (903) 425-2332.

Sebastopol House SHS In Guadalupe County, in the city of Seguin, turn south at State Highway 46 and go 1 mile to U.S. Highway 90A (Court Street); turn east and go 1 mile to the park entrance, (830) 379-4833.

Seminole Canyon SP & HS In Val Verde County, 9 miles west of Comstock on U.S. Highway 90 to entrance, (915) 292-4464.

Stephen F. Austin SP In Austin County, 3 miles east of Sealy off I.H. 10, take exit F.M. 1458, go north 2 miles, turn left on Park Road 38 to entrance, (979) 885-3613.

Texas Freshwater Fisheries

Center In Henderson County, 5 miles east of Athens, take State Highway 31 to F.M. 2495 next to Lake Athens, (903) 676-2277.

Texas State Railroad SP In Anderson County, in the city of Palestine 2 miles east of Loop 256 on U.S. Highway 84 to Palestine train station. In Cherokee County, 2 miles west of Rusk via U.S. Highway 84 to Rusk train station, (903) 683-2561.

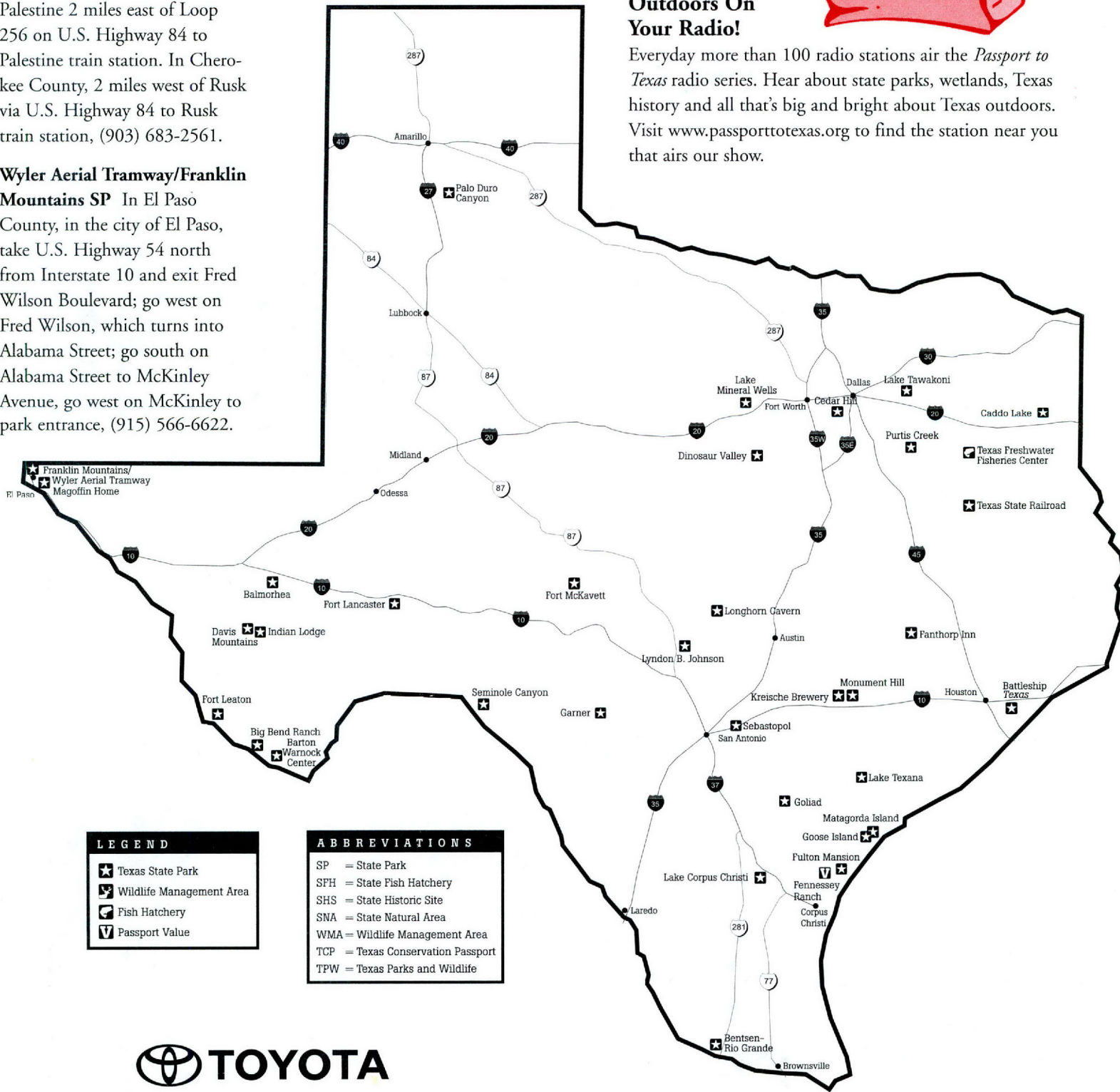
Wylter Aerial Tramway/Franklin Mountains SP In El Paso County, in the city of El Paso, take U.S. Highway 54 north from Interstate 10 and exit Fred Wilson Boulevard; go west on Fred Wilson, which turns into Alabama Street; go south on Alabama Street to McKinley Avenue, go west on McKinley to park entrance, (915) 566-6622.

PASSPORT TO TEXAS

Hear the Great Outdoors On Your Radio!



Everyday more than 100 radio stations air the *Passport to Texas* radio series. Hear about state parks, wetlands, Texas history and all that's big and bright about Texas outdoors. Visit www.passporttotexas.org to find the station near you that airs our show.



Proud Sponsor and Official Vehicle of Texas Parks and Wildlife

Consult a Texas highway map and these directions on pages 8-9 for secondary roads and other details.

Stormy Reeves

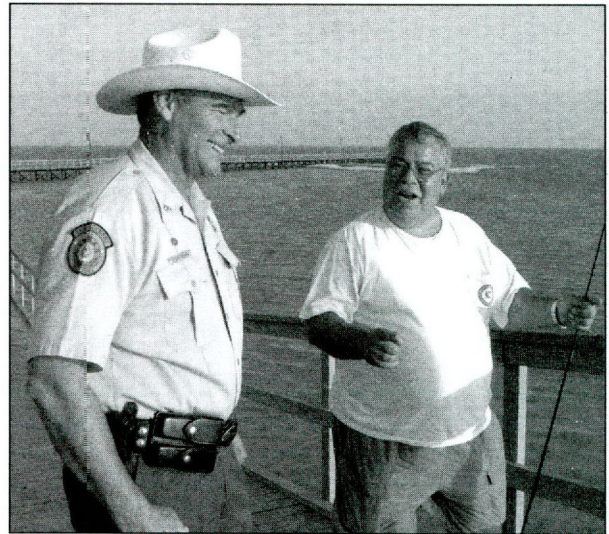
Park Manager, Goose Island State Park

“Growing up in Corpus Christi gave me an opportunity to fish all along the coast and duck hunt too,” Stormy said. “I developed a preference for working outdoors so I chose to study Recreation and Park Administration at Texas A&M University.”

“After graduation in 1972, luck and good timing helped me land the park manager position at Palmetto State Park,” he said. “I wanted to return to the coast so I accepted the job at Goose Island SP thinking I would move on to Mustang Island SP. But, I really liked the Rockport area and oak trees here, so I stayed.”

“A couple from Utah saw a rare Hermit Warbler in the park during my first spring,” he said. The sighting caused a stir among the Rockport birders and Stormy spent six years with them compiling a birder check-list for the park. “Migratory ducks settle around here starting in late September and before long, whooping cranes will be returning to the Aransas National Wildlife Refuge across the bay.”

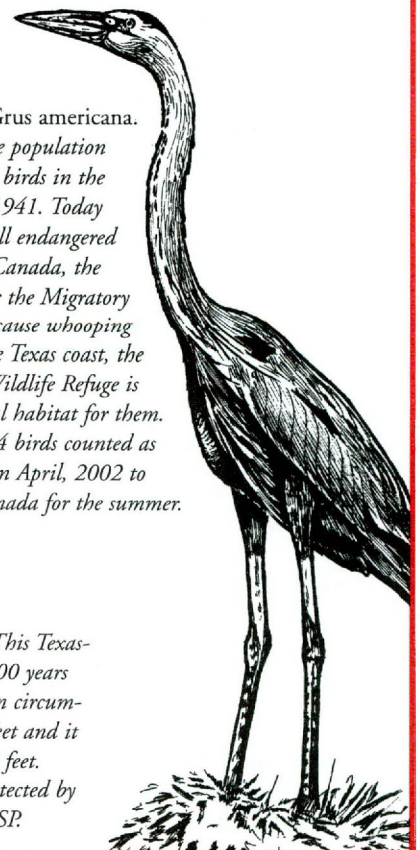
“I still go fishing and hunting and enjoy birding too. The opportunity to visit with the folks who come to the park and listening to their life stories are what makes my job so interesting.”



Stormy Reeves shares a fishing story with Bill Pollizzio, a Passport member, on Goose Island SP fishing pier.



Goose Island's Big Tree. This Texas-sized live oak is over 1,000 years old. Its trunk is 35 feet in circumference, its height is 44 feet and it has a crown spread of 89 feet. The champion tree is protected by the staff at Goose Island SP.



Whooping Crane, Grus americana. The whooping crane population consisted of only 15 birds in the migrating flock in 1941. Today the population is still endangered but is protected in Canada, the United States under the Migratory Bird Treaty Act. Because whooping cranes winter on the Texas coast, the Aransas National Wildlife Refuge is designated as critical habitat for them. There were only 174 birds counted as they left the refuge in April, 2002 to migrate back to Canada for the summer.



Trail blazer

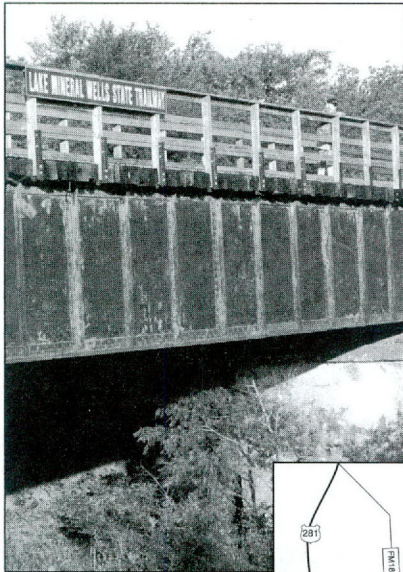
trek across texas

"The cowboy became the best-known occupational type that America has given the world. He exists still and will long exist, though much changed from the original."

– J. Frank Dobie

Lone Star Legacies

Where cow trails once crossed the Rolling Plains, Cross-Timbers and Grand Prairie, where railroads once whistled across the plains, there is now a marvelous State Park Trailway at Mineral Wells. Here's the place to get away from it all and dream of cowboys and trains headed west.

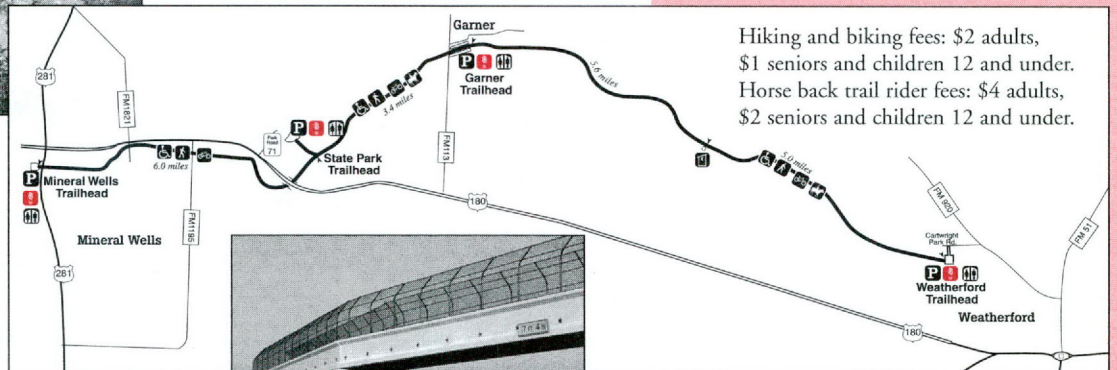


One of the renovated railroad bridges.

The Rails-to-Trails Conservancy finds abandoned rail lines and then facilitates the conversion to a recreational trail. This trail follows the old Weatherford, Mineral Wells and Northwestern Railroad originally built in 1889 and operated until railroad traffic came to a halt. Now, most of the park trail follows the old railroad corridor.

Hikers, bikers and trail riders on horseback will find a pavement of finally crushed limestone on a fairly flat grade with old railroad bridges to cross the creeks and gullies. One new bridge was constructed over U.S. Highway 180 with a grant from the Texas Department of Transportation. Finally, trailheads have been established at four locations. Modern travelers can enjoy easy access to the legacy of the cowboys and railroads.

You can access the trail at four different locations. Each trailhead has an iron ranger with fee envelopes.



This new bridge over the highway has an asphalt surface and a gradual incline at both ends.

LAKE MINERAL WELLS

(940) 328-1171

A Legacy of Cowboy Music and Poetry – An afternoon and evening of old time music, stories and cowboy poetry to celebrate these legacies on stage. Off stage there will be storytellers, living history characters and more. Bring your favorite lawn chair. From 1 to 9 p.m. on Oct. 20.

Cowboy Campfire – Music, poetry and storytelling around a campfire. Bring a lawn chair. From 7 to 9 p.m. on Nov. 9.

Kids' Wilderness Survival – A fun way for kids to learn what to do if they are lost. Includes interactive games, demonstrations and a nature trail hike. Kids must be accompanied by a parent, guardian or youth group leader for this 2½-hour course. From 1 to 3 p.m. on Nov. 23 and Dec. 7. Reservations required.

Storytelling Down in the Holler – Come to Penitentiary Hollow for storytelling by David Owens. Hear local folklore, Native American stories, cowboy poetry and some just plain fun stories. Bring a blanket or a lawn chair that you can carry easily. From 6:30 to 8 p.m. on Oct. 26 and Nov. 16.

6th Annual North Texas Skywatch Amateur Astronomer's Star Party – A party for amateur astronomers to share ideas and experiences, learn new techniques, swap equipment and observe in a dark sky location. There will be a beginner's astronomy slide presentation at sunset. Event starts at 5 p.m. on Nov. 2.

Lake Mineral Wells State Trailway.

Field Trips



Look under *Drive Across Texas* on pages 8-9 for travel directions and phone numbers.



An old-fashioned sack race at San Angelo SP during last year's LSL Weekend.

LONE STAR LEGACY EVENTS

The Texas Hill Country River Region Classic – A bike ride to seriously challenge cyclists, but also to give everyone in the family an enjoyable ride. Includes: a clinic on climbing and descending skills, maps, t-shirts, spaghetti dinner and entertainment. **Garner SP**, Oct. 18-20. Call for details and event fees (800) 210-0380 or (830) 232-6132.

Borderlands Legacies – Bakery demonstration using the authentic brick oven in the fort. Activities for children with folk toys to use and make. Historical re-enactments and a food, arts and crafts marketplace. Music and Dance to include Presidio High School mariachis and the Presidio Folklorico Dancers. **Fort Leaton SHS**, all day on Oct. 19.

Car Show-Shine – Presented by the Corpus Christi Gear Jammers, the show is open to all hot rods, car clubs,

vintage cars, sports cars, etc. **Lake Corpus Christi SP**, Oct. 19.

Musical Dinner Theater – Enjoy a barbeque dinner as you listen to live bluegrass music and watch a one-act play by a local theater group. Fees \$13 TCP members, \$15 non-members, \$14 senior citizens, \$13 children 12 and under; reservations required (903) 560-1795. **Lake Tawakoni SP**, 7 p.m. on Oct. 19.

Outdoor Extravaganza – We will have touch tanks with sea anemones, crabs, fish, etc., fish prints, catfishing for kids with cane poles, a truck, RV and boat show, arts and crafts booths, plant sale, live music, chuck wagon cooking demonstrations and a barbeque lunch from 11 a.m. to 2 p.m. Please contact the park and buy your barbeque tickets in advance (361) 782-5718. **Lake Texana SP** from 10 a.m. to 6 p.m. on Oct. 19.

Haunted Canyon – Spooks and ghouls abound in the canyon for some hauntingly good fun! Activities include a haunted hayride, games, candy, costume

contest, pumpkin carving contest and much more. **Palo Duro Canyon SP** from 6 to 9 p.m. on Oct. 19.

Wild Game Dinner – Sample roast venison, feral hog, barbecued raccoon and teriyaki rabbit with heaping sides of beans, coleslaw and potato salad. Bid on wildlife-related silent auction items. Fee \$10 adults, free for children 12 and under. **Purtis Creek SP** from 6 to 8 p.m. on Oct. 19.

Fun Day – Rock climbing wall, ring toss, beanbag toss, putt-putt golf, cake-walk and enjoy food, kiddie train rides and lots of fun. **Stephen F. Austin SP** from 9 a.m. to 5 p.m. on Oct. 19.

HALLOWEEN

Halloween Madness – Nature tours, a haunted trail, arts and crafts, costume contests, trick-or-treating and much more. From 4 to 9 p.m. on Oct. 26; fee \$1 per person. **Bentsen-Rio Grande Valley SP**.

Haunted Ghost Town – The Contrabondo movie set at Big Bend Ranch East will be transformed into a haunted ghost town with games, refreshments, Gypsy fortune-tellers and ghost stories around the campfire. Bring your costumes and join the haunting. From 6:30 to 10 p.m. on Oct. 26; fee \$3 per person. **Big Bend Ranch SP**.



Ghostly Candlelight Tours – They say this 1875 adobe home has ghosts. All electric lights are off and lighting is by candles! From 6 to 10 p.m. on Oct. 18; advance tickets \$5 adults, \$3 TCP members, senior citizens and children 12 and under, all tickets \$8 at the door; reservations encouraged. **Magoffin Home SHS.**

Stories of Spirits – The regular historical tour is expanded to include stories of spirits and odd events that occur in the house. Starts promptly at 10 a.m. on Nov. 9 and Dec. 14; fees \$3 adults, \$1.50 senior citizens, \$1.50 students; no children under 10 please; reservations encouraged. **Magoffin Home SHS.**

Haunted Trail and Hayride – Take a spooky ride through the park and an even spookier walk through the woods as ghost and goblins come out from the trees. A toddler hayride available for the young or feint of heart at 6 p.m. Food and drinks available for a small fee at the dining hall. From 6 to 10 p.m. on Oct. 28-30; fee \$3 per person, bring a canned good and save \$1, hayride \$1 or a canned good. **Stephen F. Austin SP.**

CHRISTMAS

All across Texas the state parks decorate for Christmas company, and set out special treats – y'all come! Phone numbers are on pages 8-9.

Borderlands Christmas Music and Folklorico Dancers – **Barton Warnock Center**, from 6:30 to 9 p.m., Dec. 14 and at **Fort Leaton SHS** from 6 to 9 p.m. on Dec. 21.

Mission Espiritu Santo at Goliad SP

Christmas Tea – **Magoffin Home SHS** at 1 p.m. and 3:30 p.m. on Dec. 8; fee \$12 per person; pre-paid ticket required.

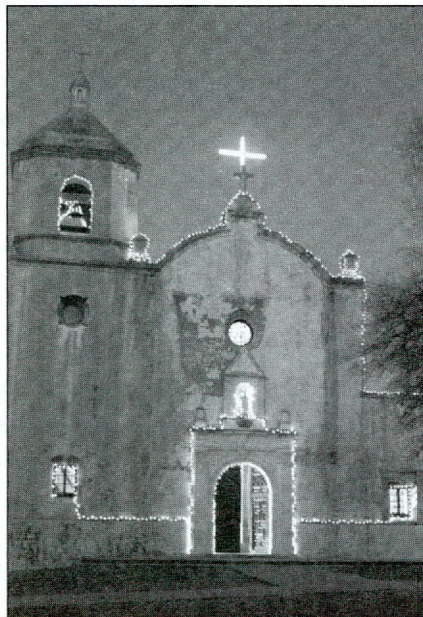
Santa Arrives at Ranger Peak – Wyler Aerial Tramway – **Franklin Mountains SP** from 2 to 5 p.m. on Dec. 19, 20, 23 and from 2 to 7 p.m. on Dec. 21, 22; tram fees \$7 adults, \$4 children 12 and under.

Yuletide TEXAS – Battleship *Texas* from 10 a.m. to 5 p.m. on Dec. 14; fees \$5 adults, \$4 senior citizens, \$3 children 6-18, free to children 5 and under,

Candlelight Christmas Carols – **Fulton Mansion SHS** from 6:30 to 8 p.m. on Dec. 14.

Caroling Underground – **Longhorn Cavern SP** from 3 to 5:30 p.m. on Dec. 7, 11, 14, 18, 21; fees \$14.95 TCP members, \$15.95 non-members, \$14.95 senior citizens, \$10.95 children 12 and under; reservations required,

Annual Christmas Tree Lighting – **LBJ SP & HS** from 5 to 10 p.m. on Dec. 15.



Christmas in the Canyon – **Palo Duro Canyon SP** from 2 to 5 p.m. on Dec. 14; admission during the event will be one canned food item per person for donation to a local charity.

Victorian Christmas Train – **Texas State Railroad SP** from 2 to 3 p.m. on Dec. 7, 14, 21; fees \$25 adults, \$10 children 12 and under; reservations required.

Christmas Caroling through Penn Farm – **Cedar Hill SP** from 6:30 to 8 p.m. on Dec. 7.

Twilight-Firelight – **Fanthorp Inn SHS** from 4:30 to 7:30 p.m. on Nov. 30; fees \$6 adults, \$4 children 12 and under.

Group Christmas Tours – **Monument Hill & Kreische Brewery SHS** in December. Much is planned at this park, please call for times, dates and fees or go online for details. Web address on page 15.

Trail of Lights – **Monument Hill & Kreische Brewery SHS** in December. Much is planned at this park, please call for times, dates and fees or go online for details.

Christmas Fun for Children – **Sebastopol House SHS** from 10 a.m. to 2 p.m. on Dec. 7.

Tree Lighting and Hayride – **Stephen F. Austin SP** at 6 p.m. on Dec. 14; fee one canned good per person.

Pancake Breakfast With Santa – **Stephen F. Austin SP** from 8 to 10:30 a.m. on Dec. 14; fee \$3 per person.

Christmas at the Mission – **Goliad SP** from 8 to 9 p.m. on Dec. 7; fee \$2 per person.

PASSPORT

Values

TEXAS FRESHWATER FISHERIES CENTER

(903) 676-2277; www.tpwd.state.tx.us/fish/infish/hatchery/tffc/index.htm

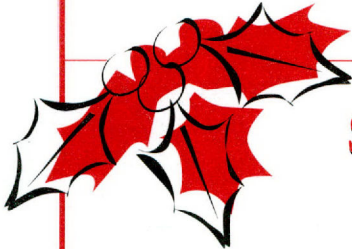
Visit the Texas Freshwater Fisheries Center to discover Texas under water. Passport members get half off the regular fees when you present your paper license. With its aquaria, under water shows and outdoor fishing pond, TFFC is a perfect destination for a family outing. Regular fees are: \$5.50 adults, \$3.50 for children from 4 to 12 and \$4.50 for seniors over 65.

Lone Star Legacy Raffle – Take a self-guided tour of the aquarium, the newly opened Wetlands Habitat area, see fish feeding at the dive show, take tram rides and fish at the Anglers Pavilion Casting Pond. Getaway gear will be raffled to benefit our Endowment Fund. From 9 a.m. to 4 p.m. on Saturday, Oct. 19, and from 1 to 4 p.m. on Sunday, Oct. 20.

Halloween at the Hatchery – Visit a haunted castle with goodies provided for the children. Proceeds go to local charities. From 6 to 8:30 p.m. on Oct. 31; fee \$1 per person.

Breakfast with Santa – Have breakfast and a photo opportunity with Santa (special package prices available for the photo). From 8 to 10 a.m. on Dec. 7; fees \$6.50 adults, \$6.50 children 3 and over, free for children 2 and under; reservations required.

Pond Management Workshop – Learn from professionals in this one-day workshop featuring some of Texas' best biologists. From 9 a.m. to 4 p.m. on Nov. 9; fee \$30.



SPECIAL OFFER
for TCP Members!

TEXAS
PARKS & WILDLIFE
The OUTDOOR MAGAZINE of TEXAS

Just \$14.95 for 12 BIG ISSUES. YOU SAVE 67% off the cover price!

Call **(800) 937-9393** to order today and be sure to tell the operator that you are a TCP member. Give them the code of **KTCP26**

Passport Journal

October 2002 – December 2002

Vol. 11, No. 4

Texas Parks and Wildlife Department

To manage and conserve the natural and cultural resources of Texas and to provide hunting, fishing and outdoor recreation opportunities for the use and enjoyment of present and future generations.

GOVERNOR OF TEXAS

Rick Perry

COMMISSION

Katharine Armstrong,

Chairman **Austin**

Ernest Angelo, Jr.,

Vice-Chairman **Midland**

John Avila, Jr. **Fort Worth**

Joseph B.C. Fitzsimons **San Antonio**

Alvin L. Henry **Houston**

Philip Montgomery **Dallas**

Donato D. Ramos **Laredo**

Kelly W. Rising, M.D. **Beaumont**

Mark E. Watson, Jr. **San Antonio**

Lee M. Bass,

Chairman-Emeritus **Fort Worth**

Executive Director

Robert L. Cook

Communications Director

Lydia Saldaña

JOURNAL STAFF

Emily Carter Editor

Dianne Sebai Events Editor

Darcy Bontempo Marketing Director

Texas Conservation Passport

4200 Smith School Road

Austin, TX 78744

FAX: (512) 389-8029

E-mail: passport@tpwd.state.tx.us

Passport Journal

(ISSN 10832823) (USPS 012968)

is published quarterly by

Texas Parks and Wildlife Department,

4200 Smith School Road, Austin, TX 78744.

The \$50 membership fee includes the

\$4.95 annual cost of this publication.

Periodicals Postage Paid at Austin, TX.

POSTMASTER:

Send address changes to

Passport Journal

4200 Smith School Road

Austin, TX 78744

© 2002 Texas Parks and Wildlife Department

GETTING IN TOUCH

- 1 (800) 792-1112, press extension for Texas Conservation Passport
- www.tpwd.state.tx.us
- passport@tpwd.state.tx.us

PARK RESERVATIONS

- (512) 389-8900 (also cancellations)
- TDD/TDY line (512) 389-8915
- State parks accept Discover, MasterCard and Visa for payment and reservation deposits. Monday thru Friday 9 a.m. - 8 p.m., Saturday 9 a.m. - 12 p.m. Best days to call are Wednesday - Friday. Closed on major holidays. Voice mail - 24 hours a day.
- Indian Lodge (915) 426-3254
- Texas State Railroad (800) 442-8951

RESERVATIONS BY FAX, INTERNET OR E-MAIL

- Must be made four days in advance of requested date of arrival at the park. If you choose this option, include a phone number for contact.
- FAX: (512) 389-8959
- E-mail: reservations@tpwd.state.tx.us
- Internet: www.tpwd.state.tx.us
- Reservations accepted 24 hours a day.

WILDLIFE MANAGEMENT AREAS

- Call individual areas on a weekday, 8-9 a.m. and 12-1 p.m., to make sure you can have access. TCP member get free entry, non-members pay a \$10 limited use permit. Event listings include phone numbers.
- Everyone in a member's vehicle gets in free at wildlife management areas when the WMA is open to the general public. WMAs may be closed for research and will be closed during hunting season.

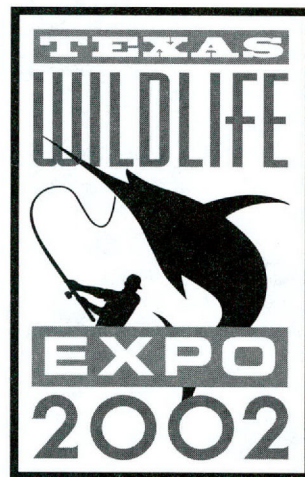
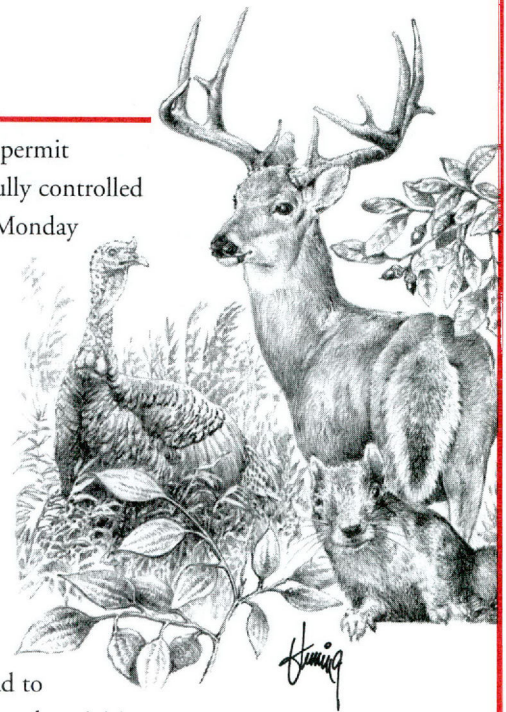
PUBLIC HUNTS ON STATE PARK LANDS

A number of state parks will offer special permit hunting this fall. As in the past, the carefully controlled public hunts are primarily scheduled for Monday through Friday because typically the mid-week period is not as busy with other park activities. Most parks will be open on Saturdays and Sundays for camping, fishing, picnicking and other common activities.

On the days when special drawn hunts are in progress, access is restricted to individuals with a special permit to hunt.

You can always call directly to the park of your choice before you hit the road to make sure that it will be open for general park activities.

Call Texas Parks and Wildlife's toll-free automated Information Line, (800) 792-1112 between 8 a.m. and 5 p.m. Monday - Friday and press 3 for Park Information or press 5 for Public Hunts information.



ATTENTION TCP MEMBERS:

Attend Wildlife EXPO on Oct. 5-6 in Austin and get a free EXPO patch when you visit the TCP Booth in the state park tent. We only have 300 patches to give away, so come on out on Saturday morning. See page 5.



Go to our Web site for a complete
listing of state park events

www.tpwd.state.tx.us



Weekend Escapes



THE LEGACY OF FRIENDS

A friend of Texas State Parks might be a seasonal host who lives on-site or a one time helper for a single event. Check for opportunities to join a Friend's Group at:

<http://www.tpwd.state.tx.us/admin/legacy/friends/friends.htm>

Thanksgiving in Big Bend

The vast distances, rugged mountains and rough country hiking lure hundreds of visitors to the desert wilderness in Big Bend every Thanksgiving. It's a great time of year to go west! The nights get cold enough to give those sleeping bags a workout and the days warm up to perfect hiking temperatures of about 80 degrees.

Big Bend Ranch SP is offering two special outings in the Thanksgiving week (see below) and hosts overnight visitors in campsites or a bunk house. Desert camping out there offers a truly primitive experience with absolutely no facilities, although, water and showers are provided at the ranch headquarters. As an alternative, the Bunk House Lodge accommodates 30 people in dormitory style sleeping and bathroom arrangements divided into men's and women's areas.

On Nov. 28, join the park staff and other visitors for a Rustic Big Bend Ranch Thanksgiving Dinner with all the trimmings. It is served in the Bunk House Lodge group dining hall for just \$9 per person.

THANKSGIVING WEEK EVENTS AT BIG BEND RANCH SP

Desert Survival – Skills and techniques for practical, comprehensive methods of short and long-term survival in the Chihuahuan and North American deserts. Nov. 29-Dec. 1; fee \$350 per person; reservations required.

Trip to Madrid Falls – A four-wheel drive vehicle takes you to a remote area of the park within one mile of the falls. You hike in from there to see the second highest waterfall in Texas. From 8:30 a.m. to 4 p.m. on Nov. 23; fees \$72 TCP members, \$75 non-members; reservations required.



Camping and hiking at Big Bend Ranch SP.

Big Bend Ranch SP Mountains.

TRIP PLANNER

- Park Reservations, see page 15.
- Big Bend Ranch SP, (915) 229-3416
- Barton Warnock Environmental Education Center, (915) 424-3327

TCP MEMBERSHIPS

The \$50 Texas Conservation Passport membership is good for entrance to state parks and wildlife management areas for 12 months and it comes with a windshield decal. Members also receive a subscription to this quarterly *Passport Journal*.



Dispersal of the publication conforms with Texas State Documents Depository Law, and it is available at Texas State Publications Clearinghouse and/or Texas Depository Libraries. FWD BR K0700-144 (9/02)