

P400.6

P268
12:02

TEXAS PARKS AND WILDLIFE

PASSPORT

Journal

Vol. 12, No. 2 • April

Government Publications
Texas State Documents

JUN 02 2003

Depository
Dallas Public Library

“All Aboard!”

The conductor's voice resonates across the platform and into the depot. Passengers still standing in a line at the old-fashioned ticket window fidget with anticipation. Then it's outside to the waiting coach, a climb up the open-work iron steps and into an authentically restored Victorian era train coach. Wide seats of red leather and windows opening to the fresh air give testimony to a by-gone and gracious style of travel. As the train pulls away from the station and into the Pineywoods, the wheels turn with a clacking sound. An antique steam locomotive chugs and puffs; the engineer sounds the train's whistle at every road crossing.

Passengers capture the experiences of yesteryear as the engine covers the 25-mile trip between the Rusk station and the Palestine depot. Along the way, the train is "side-tracked" allowing riders to watch as the train from the opposite station clatters past.

When it pulls into the station, everyone has an hour for a picnic lunch and a stroll through the gift shop but before long, travelers hear that familiar call, "All Aboard," and reluctantly leave for the trip back.

Texas State Railroad reservations: (800) 442-8951
For more information visit: TexasStateRailroad.com



The Texas State Railroad runs between the Rusk and Palestine state parks, and a ride can begin at either end. Peek into the engineer's cab and tour the Steam Engine Shop; see page 13 for details.



Scenic Road Trips



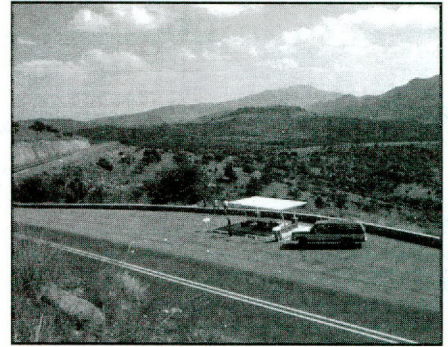
CONTENTS

SCENIC ROAD TRIP	2
TRAVELER'S TALES	3
<i>Seasonal Trips</i>	
PICNIC PLACES	4
<i>Cleburne SP</i>	
<i>Daingerfield SP</i>	
BIRD CALLS	5
<i>Bat Watching</i>	
NATURALIST	6
<i>Earth Day</i>	
STATE PARK HISTORIAN	7
<i>The Civilian</i>	
<i>Conservation Corps</i>	
DRIVE ACROSS TEXAS	8-9
<i>Travel Directions</i>	
<i>Phone Numbers</i>	
PASSPORT PEOPLE	10
TRAILBLAZER	11
<i>Bicycling in the</i>	
<i>Davis Mountains</i>	
FIELD TRIPS	12-13
PASSPORT VALUES	14
<i>Texas Freshwater</i>	
<i>Fisheries Center</i>	
AT YOUR SERVICE	15
<i>Getting in Touch</i>	
<i>Park Reservations</i>	
<i>Wildlife Management Areas</i>	

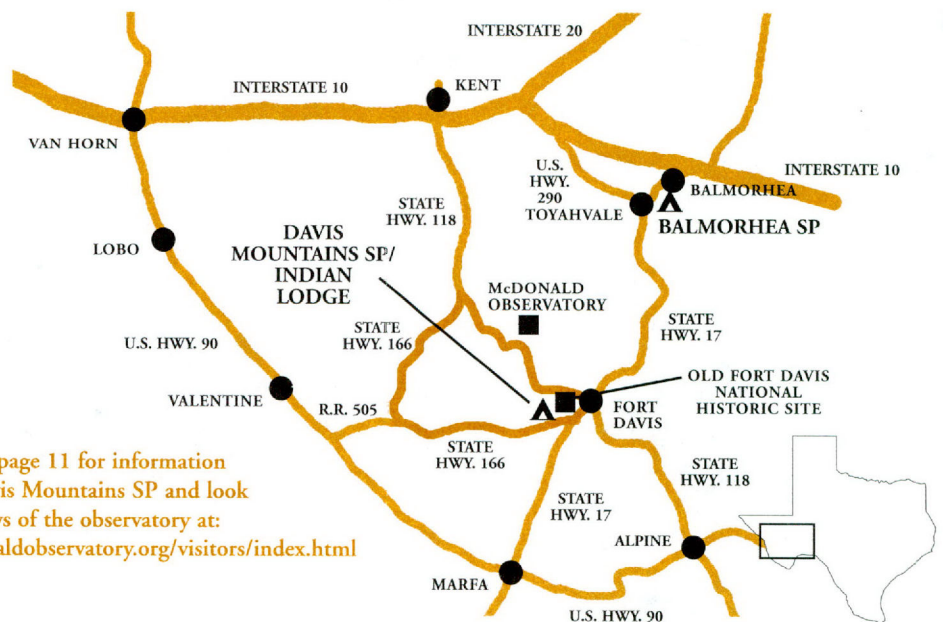
Davis Mountains Scenic Loop

State Highway 118 and State Highway 166

The Davis Mountains rise to elevations high enough, and they cover so much geography, that the prevailing winds push the clouds up to higher, cooler air. There, moisture condenses and falls – the mountains are making their own rain. On some slopes and valleys in this desert environment, enough rain falls to support stands of ponderosa and pinon pines. The 74-mile Davis Mountains Scenic Loop starts and ends at the historic town of Fort Davis and along the way it proceeds up Limpia Canyon, passes the Davis Mountains SP (see page 11) and the McDonald Observatory. By all means, stop at the McDonald Observatory Visitors Center to see the exhibits and get a schedule of star party events. As you go on out the scenic loop, you will find a number of pull outs with picnic tables but no rest rooms. Have lunch while viewing the magnificent mountains or in the solitude of a pine-shaded roadside park where the wind whispers in the pines.



Photos courtesy Texas Department of Transportation



Check page 11 for information on Davis Mountains SP and look for news of the observatory at: mcdonaldobservatory.org/visitors/index.html



Traveler's Tales

Letters from TCP members

Dear Editor,

Who would have thought that even though we were hours from the nearest saltwater coastline, we could "hang ten" on an inland sea of sand at Monahans Sandhills State Park in West Texas. What a surprise to find that only a 1/2-hour drive west of Odessa on I-20, were acres of sand dunes, with some cresting at 70 feet high! Grab a sand toboggan and surf disk at the park office, and it's "surfs up" for hours of family fun!

We enjoyed hiking along the nature trail and the overnight camping too. Monahans is a unique Texas experience.

Sincerely, Bryan Frazier



Monahans Sandhills SP

TELL YOUR TRAVEL TALES!

Write and tell us about your travels to state parks in a letter of about 150 words. Include your name, address and where you purchased your TCP. Write: *Texas Conservation Passport Journal*, 4200 Smith School Road, Austin, TX 78744; FAX: (512) 389-8029; E-mail: passport@tpwd.state.tx.us

SEASONAL TRIPS

April

Spring in the Pineywoods means the flowering trees like dogwood and redbud are in bloom. At the historic **Caddo Lake SP** (903) 679-3351 you will find hiking, fishing, camping and rustic cabins built by the Civilian Conservation Corps in the 1930s.

Day time trips to nearby sites include the Starr Family Home SHS in Marshall and the historic town of Old Jefferson with its quaint shops and eateries. <http://www.tpwd.state.tx.us/park/caddo/>

May

The large, 26,000-acre **Choke Canyon Lake** invites swimming, boating, water skiing and fishing. In addition to the camp grounds the Calliham Unit (361) 786-3868 has a swimming pool and courts for tennis, volleyball and basketball. The South Shore Unit (361) 786-3538 has baseball and volleyball areas as well as equestrian camping. Check the site on-line for all the details: <http://www.tpwd.state.tx.us/park/choke/>

June

Swimming or fishing in the good ol' summertime at **Meridian SP** (254) 435-2536 began in the 1930s when the Civilian Conservation Corps constructed an earthen dam across Bee Creek to create the park's small 72-acre lake. Rustic stone buildings make this picturesque place especially appealing when the spring wildflowers cover the meadows. See the back page for more on Meridian SP. <http://www.tpwd.state.tx.us/park/meridian/>

Park reservations, page 15



DAY TRIPS

Admiral Nimitz SHS – National Museum of the Pacific War

(830) 997-4379

Experience a World War II assault on an enemy bunker at the Island Assault 1944 Living History Program. Re-enactors use authentic Pacific War era clothing, weapons and vehicles outdoors. Dress for the weather conditions. May 24 and 25, shows at 10:30 a.m., 12:30 p.m., 2:30 p.m., 4 p.m.; fees \$2 adults, \$1 children 12 and under.

Memorial Day Program in recognition of veterans who paid the supreme price. Keynote speaker is author and war correspondent, Joe Galloway, author of a best selling book made into a movie: "We Were Soldiers Once and Young." Limited seating. May 26 from 10 a.m. to 12 noon.

The Battle of Midway was a decisive changing point in the war with Japan. Attend an outdoor concert in the Plaza of Presidents and see a documentary film on the Battle of Midway in the ballroom. Seating for the outdoor concert is limited and please dress for the weather. June 6, call for the time. Standard museum admission: \$5 for adults, \$3 for students, 6 and under free.

Inks Lake SP

(512) 793-2223

Bluegrass Music in the Park with Wayne Brooks and the Piney Grove Ramblers playing at the amphitheater. Irish folktales will be the highlight of the evening. The free concert will be on April 12; May 17 and June 14 from 7:30 to 8:30 p.m.



Picnic Places

take a day trip to the country

Cleburne State Park &C

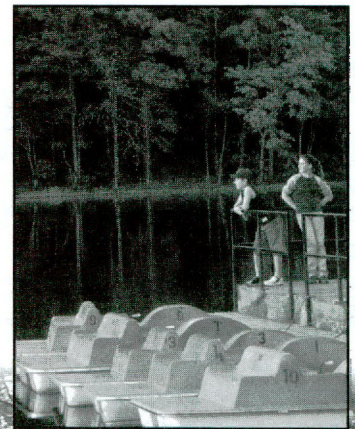
Take your picnic basket to big-sky country where this old Civilian Conservation Corps park retains its pristine glory and beauty. In 1935, CCC boys built an earthen dam here with a beautiful masonry, three-level spillway to make the clear spring-fed lake. Hike or bike the trails that zigzag through white rocky hills, limestone canyons and ruggedly beautiful wooded terrain, and, in early spring, you can see a carpet of bluebonnets covering the open fields.



Daingerfield State Park &C

The lush pines and dense oaks that edge the clear and calm, 80-acre lake make for a most picturesque picnic place. Whether it's a sandwich on a paddleboat cruise, or a basket of grandma's fried chicken on the grassy banks of the lake – a sunny day outdoors in this old CCC park is worth the trip.

See page 14 for historic photos of the CCC working at Daingerfield on this entry road.





Bird Calls

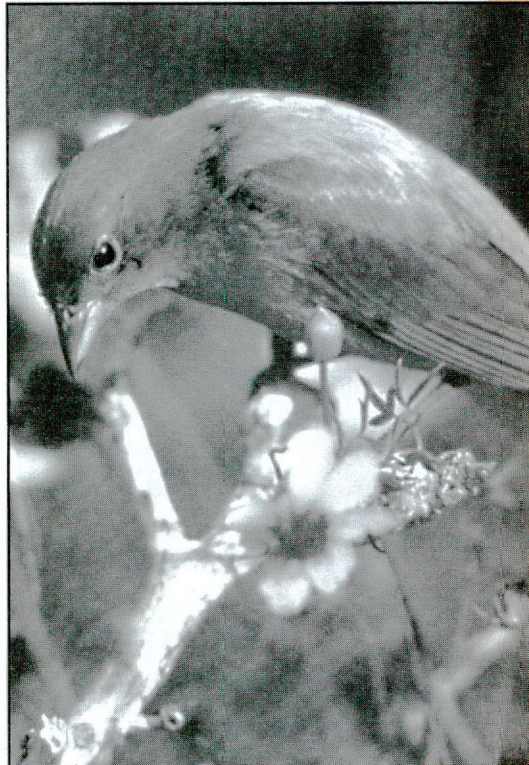
Painted Bunting

A brilliant flash of blue, red and green is often the first impression of a painted bunting. The male is the show-off with his brilliant indigo-blue head, bright red eye-ring and underparts, and a cape of green across his shoulders that seems to shine in the sunlight. The female is drab in contrast, having an almost olive-green back and a pale green breast.

This small songbird perches, nests and eats in brushy thickets and streamside woodlands all across the state – except in the northern Panhandle. Novice birders rarely even see painted buntings regardless of the bird's bright visible colors and widespread presence. The little chirpers avoid backyard feeders and other places outside the security of dense cover.

But, because they are territorial, the male's song during mating season can help locate him. Intent on mating, the male will probably be singing his sweet warble from a predominant perch. When a female enters his territory, his courting ritual takes him to the ground where he flutters and struts for her. But, the female may still be difficult to pick out amongst the many sparrows, buntings and warblers that are also found in the habitat.

Painted buntings (Passerina ciris) can be seen at McKinney Falls SP, see page 10.



GO BIRDING!

Full Moon Hike and Owl Prowl –

A guided night hike on park trails to a favorite birding area. Wear good walking shoes and bring a flashlight. Meet at the parking lot across from the park office.

An adult must accompany children under 14. April 16; June 14 from 8:30 p.m. **Inks Lake SP**
(512) 793-2223.

BAT WATCHING!

Bats of Clarity Tunnel –

Ride the scenic railway to Clarity Tunnel to view the nightly bat emergence. June 14 at 7 p.m.; fees \$15 adults, \$10 children 12 and under; reservations required.

Caprock Canyons SP & Trailway
(806) 455-1492.

Evening Bat Flight –

Peer to the depths of Devil's Sinkhole and watch over a million bats spiral into the evening sky like a tornado.

April; May; June. Observations by reservation. Devil's Sinkhole Society at **Devil's Sinkhole SNA**
(830) 683-BATS.

Stuart Bat Cave Bat Flight –

Observe an estimated 500,000 bats spiral into the evening sky and attend an interpretive program. April 5, 19;

May 3, 17, 31; June 14. Call for times and fees; reservations required.
Kickapoo Cavern SP (830) 563-2342.



BIRDWATCHING FOR BEGINNERS

Learn to identify avian species found in the Texas Hill Country at the Government Canyon SNA which is not open to public access yet. Donations will benefit our Lone Star Legacy Endowment Fund. Reservations start

ten days before the event. April 12 from 7:30 to 11 a.m. \$5 donation per person requested and reservations are required. **Government Canyon SNA** (210) 688-9055.



For information on events, activities and locations call (956) 381-9WBC.



EARTH DAY

Earth Day falls on April 22 and marks the 33rd year since that first Grassroots Event. Here in Texas, the celebration comes right at the peak of wildflower season when pink primroses, red Indian paintbrushes and bluebonnets drape the meadows. Another great reason to get out to the parks.

A Day of Family Fun – What can we do to protect the Earth? Exhibits, hands-on activities and demonstrations from conservation and environmental groups will be offered, as well as guided nature hikes, educational programs, historical interpretation and games. Set for April 19. Check on-line or call **Brazos Bend SP** (979) 553-5101. www.bbspvo.org.

Gorman Springs Event – Gorman Springs is open to the public only twice a year so hike to this beautiful area. Take a self-guided 1-1/2-mile round-trip to our spectacular 65-foot high Gorman Falls, a waterfall on the springs. Walk to Gorman Cave for a wild-cave tour (children must be at least 6 years old); bring flashlight and good hiking footwear. See fly-fishing demonstrations and rope climbing too. April 26 from 9 a.m. to 5 p.m.; fees Gorman Falls tour \$3 adults, \$2 children 6-12, free children 5 and under; Gorman Cave tour \$10 per person, reservations recommended, **Colorado Bend SP** (915) 628-3240.

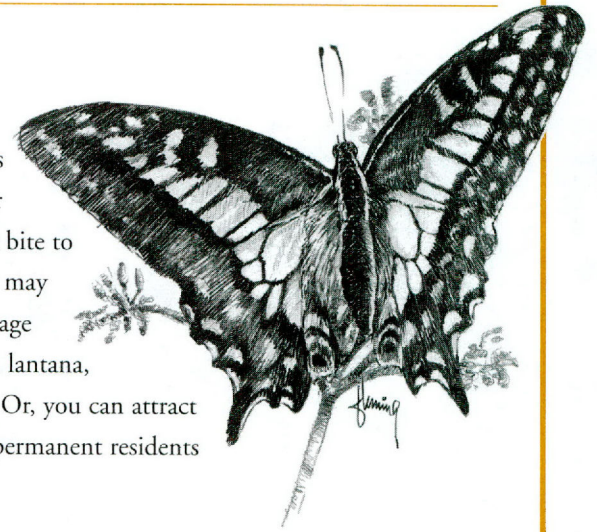
Tree Planting – Celebrate Earth Day at our nature programs and tree plantings throughout the day. April 26 from 10 a.m. to 5 p.m. **Lake Texana SP** (361) 782-5718.



Naturalist

Wildscaping

Wildscaping means inviting critters to fly, crawl or hop on over to your yard for a lovely stay or for a quick bite to eat. Hummingbirds and butterflies may simply pass through to take advantage of nectar sources like clematis vine, lantana, mistflower, scarlet sage or verbena. Or, you can attract mosquito-eating birds and bats as permanent residents by putting up a bird or bat house.



A wildscaped yard is a small habitat area that provides places for birds, toads, frogs and small mammals to feed and dine, escape from predators and raise their young. It can be as simple as providing feeders, birdbaths and nest boxes for birds, or as elaborate as creating rock-lined ponds and restoring native vegetation.

EXAMPLE OF A WILDSCAPE PLAN

Shade Trees

Live Oak
Red Mulberry
Cedar Elm

Nectar Sources

Clematis Vine
Lantana
Mistflower
Scarlet Sage
Verbena

Wildlife Area

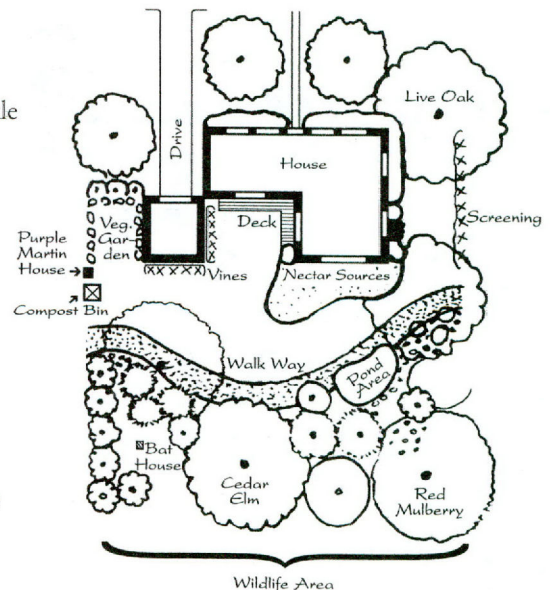
American
Beautyberry
Cherry Laurel
Mexican Plum
Persimmon

Vines and Screening

Coral
Honeysuckle
Dwarf Wax
Myrtle
Passion
Flower
Vine

Pond Area

Buttonbush
Cardinal
Flower
Horsetail
Louisiana Iris
Swamp Lily



Look for *Texas Wildscapes: Gardening for Wildlife* at your favorite garden shop. By Noreen Damude and Kelly Conrad Bender, with contributions from Diana Foss, Judit Gowen, John Herron, Matt Wagner and Elena Cano Camarillo, 250 pages, 75 color photographs, paperback, \$24.95.



State Park Historian

The Civilian Conservation Corps

Automobiles began reaching deep into American cultural life in the 1920s, and pioneering auto travelers created a demand for overnight lodging. Then the Depression hit. Urban soup kitchens appeared, and thousands of out-of-work Americans now traveled in automobiles [or hitchhiked], seeking jobs in faraway places. To provide jobs, President Franklin D. Roosevelt created the Civilian Conservation Corps. He signed the CCC bill into law some 70 years ago on March 31, 1933. By July of that year, more than a quarter-of-a-million “boys” were outfitted with World War I surplus uniforms and tents before being shipped out to far-flung locations. Learning building trades on the job, the CCC boys cut mountain roads, dug earthen dams, chiseled stone for refectories, hewed log for cabins and hand-made rustic furniture. They built the Texas State Park system, see also page 14 and the back page. At the peak of the program, 27 CCC companies were at work in Texas. Today we still have 31 CCC state parks. Most of the state park cabins date from the 1930s; they were planned as “tourist courts” to meet the needs of the newly motoring public.



CCC “boys” lived in tent cities like this one at Palo Duro Canyon. Here they lineup for chow.

EISENHOWER BIRTHPLACE SHS

(903) 465-8908

Park Rededication – Members of the Eisenhower family will attend the rededication of the Eisenhower Birthplace Home to mark a year-long restoration of the interior to take it back to an 1890s appearance. Speakers and entertainment featured. April 6 from 2 to 4 p.m.

GOLIAD SP

(361) 645-3405

Cinco de Mayo – Commemorates the victory of Mexican troops over invading French forces at the Battle of Puebla on May 5, 1862. General Ignacio Zaragoza, a native son of Goliad, led the victorious Mexican army. Festivities include a Friday night dance, a Saturday parade, vendor booths, entertainment, a rodeo at the Goliad Fairgrounds on Sunday, a field mass on Monday at Zaragoza Plaza. May 2 to 5, call for times and entry fees.

SAN JACINTO BATTLEGROUND/MONUMENT SHS

(281) 479-2431

San Jacinto Day Celebration – Bring a picnic lunch and enjoy the ceremony at the Monument, a reenactment of the famous 1836 battle with cannon and musket fire, a ceremony onboard Battleship TEXAS to commemorate the 55th Anniversary of its arrival here. Food and drinks available. April 26 from 10 a.m. to 4 p.m. Free of charge!

SEBASTOPOL HOUSE SHS

(830) 379-4833

Annual May Day Celebration – A May Pole, music, climbing wall, kayak tank, demonstrators, games and prizes for kids and parents. May 3 from 10 a.m. to 2 p.m. Free of charge!

Admiral Nimitz SHS – National Museum of the Pacific War In Gillespie County, in the city of Fredericksburg at the corner of East Main and Washington Streets, (830) 997-4379.

Balmorhea SP In Reeves County, 4 miles west of Balmorhea on State Highway 17 to park entrance, (915) 375-2370.

Battleship TEXAS SHS In Harris County, 22 miles east of downtown Houston off State Highway 225, go east, then north on State Highway 134 to park entrance, (281) 479-4414.

Big Bend Ranch SP In Brewster and Presidio counties, 4 miles southeast of Presidio on F.M. 170; entrance at Fort Leaton SHS, (915) 229-3416.

Brazos Bend SP In Fort Bend County, 10 miles west of Rosharon on F.M. 1462, then 1 mile north on F.M. 762 to entrance, (979) 553-5101.

Caddo Lake SP In Harrison County, 15 miles north-east of Marshall off State Highway 43, go north to F.M. 2198, turn east on Park Road 2 to entrance, (903) 679-3351.

Caprock Canyons SP & Trailway In Briscoe County, 3 miles north of Quitaque. Take State Highway 86 to Quitaque, then take F.M. 1065 to the park, (806) 455-1492.

Cedar Hill SP In Dallas County, approximately 15 miles southwest of Dallas on Joe Pool Lake and 2 miles northwest of Cedar Hill on F.M. 1382; go south to park entrance, (972) 291-3900.

Choke Canyon SP/Calliham Unit In McMullen and Live Oak counties, about 70 miles south of San Antonio. On the north side of State Highway 72, about 8 miles west of Three Rivers, (361) 786-3868.

Choke Canyon SP/South Shore Unit In Live Oak County, about 70 miles south of San Antonio, off State Highway 72, just west of Three Rivers to park entrance, (361) 786-3538.

Cleburne SP In Johnson County, about 4 miles west of Cleburne off U.S. Highway 67, turn onto Park Road 21, go 6 miles to park entrance, (817) 645-4215.

Colorado Bend SP In Lampasas and San Saba counties, on the Colorado River about 10 miles above Lake Buchanan, near the community of Bend. Bend is north of Llano via State Highway 16 or west of Lampasas via U.S. Highway 183/190. Paved access to Bend via Ranch Roads 501, 580 or 581. From Bend there are approximately 4 miles of unpaved road to the park entrance, (915) 628-3240.

Cooper Lake SP/Doctor's Creek Unit In Delta County, 2 miles south of Cooper, on the northern shore of Cooper Lake, go 1 mile east on State Highway 154/19; turn west onto F.M. 1529 go 2 miles to entrance. It is 16 miles from Sulphur Springs, go north on State Highway 154/19, turn west onto County Road 4795 to entrance, (903) 395-3100.

Cooper Lake SP/South Sulphur Unit In Hopkins County, 12 miles north of Sulphur Springs on State Highway 154/19; turn west onto F.M. 71 for 5 miles, then north on

F.M. 3505 to entrance, (903) 945-5256.

Copper Breaks SP In Hardeman County, 12 miles south of Quanah or 11 miles north of Crowell on State Highway 6 to park entrance, (940) 839-4331.

Daingerfield SP In Morris County, 3 miles east of Daingerfield on State Highway 49 to Park Road 17 to entrance, (903) 645-2921.

Davis Mountains SP In Jeff Davis County, about 4 miles northwest of Fort Davis, via State Highway 118 to entrance, (915) 426-3337.

Devil's Sinkhole SNA In Edwards County, about 135 miles northwest of San Antonio; contact the Devil's Sinkhole Society and Visitor Center in Rocksprings for directions, at (830) 683-2287.

Eisenhower Birthplace SHS In Grayson County, in the city of Denison, at the corner of Lamar Avenue and Day Street, (903) 465-8908.

Franklin Mountains SP In El Paso County, in the city of El Paso, west on I.H. 10, exit on the Canutillo/Transmountain Road exit, go east on Transmountain Road for 3.8 miles to park entrance, (915) 566-6441.

Goliad SP In Goliad County, 1/4 mile south of Goliad on U.S. Highway 183/77A, to park entrance, (361) 645-3405.

Government Canyon SNA In Bexar County, from the intersection of Loop 1604 and Culebra Road (also known as F.M. 471 - back road to Castroville), travel west 3.5 miles to

Galm Road. Turn north (right) on Galm and travel 1.6 miles; gate with signs on the left, (210) 688-9055.

Indian Lodge - Davis Mountains SP In Jeff Davis County, about 4 miles northwest of Fort Davis, via State Highway 118 to entrance; the lodge is located in Davis Mountains SP, (915) 426-3254.

Inks Lake SP In Burnet County, 9 miles west of Burnet on State Highway 29, go east on Park Road 4 and go 3 miles to park entrance, (512) 793-2223.

Kickapoo Cavern SP In Edwards and Kinney counties, 40 miles west of Uvalde on U.S. Highway 90, then 22.5 miles due north of Brackettville on Ranch Road 674; park entrance is on west side of road, (830) 563-2342.

Lake Arrowhead SP In Clay County, about 20 miles southeast of Wichita Falls on U.S. Highway 281, to F.M. 1954 for 8 miles to park entrance, (940) 528-2211.

Lake Mineral Wells SP & Trailway In Parker County, 4 miles east of Mineral Wells on U.S. Highway 180 to entrance, (940) 328-1171.

Lake Texana SP In Jackson County, approximately 4 miles from Ganado, between U.S. Highway 59 and F.M. 1593, to entrance, (361) 782-5718.

Martin Dies, Jr. SP In Jasper County, 17 miles east of Woodville on U.S. Highway 190 to entrance, (409) 384-5231.

McKinney Falls SP In Travis County, 13 miles southeast of

the State Capitol. Take U.S. Highway 183 south to McKinney Falls Parkway, turn onto McKinney Falls Parkway and go 2 miles to park entrance, (512) 243-1643.

Meridian SP In Bosque County, 3 miles southwest of Meridian off State Highway 22 to park entrance, (254) 435-2536.

Monahans Sandhills SP In Ward County, 6 miles northeast of Monahans off I.H. 20 on Park Road 41, (915) 943-2092.

San Jacinto Battleground/Monument SHS In Harris County, 22 miles east of downtown Houston off State Highway 225 east, then north on State Highway 134 to park entrance, (281) 479-2431.

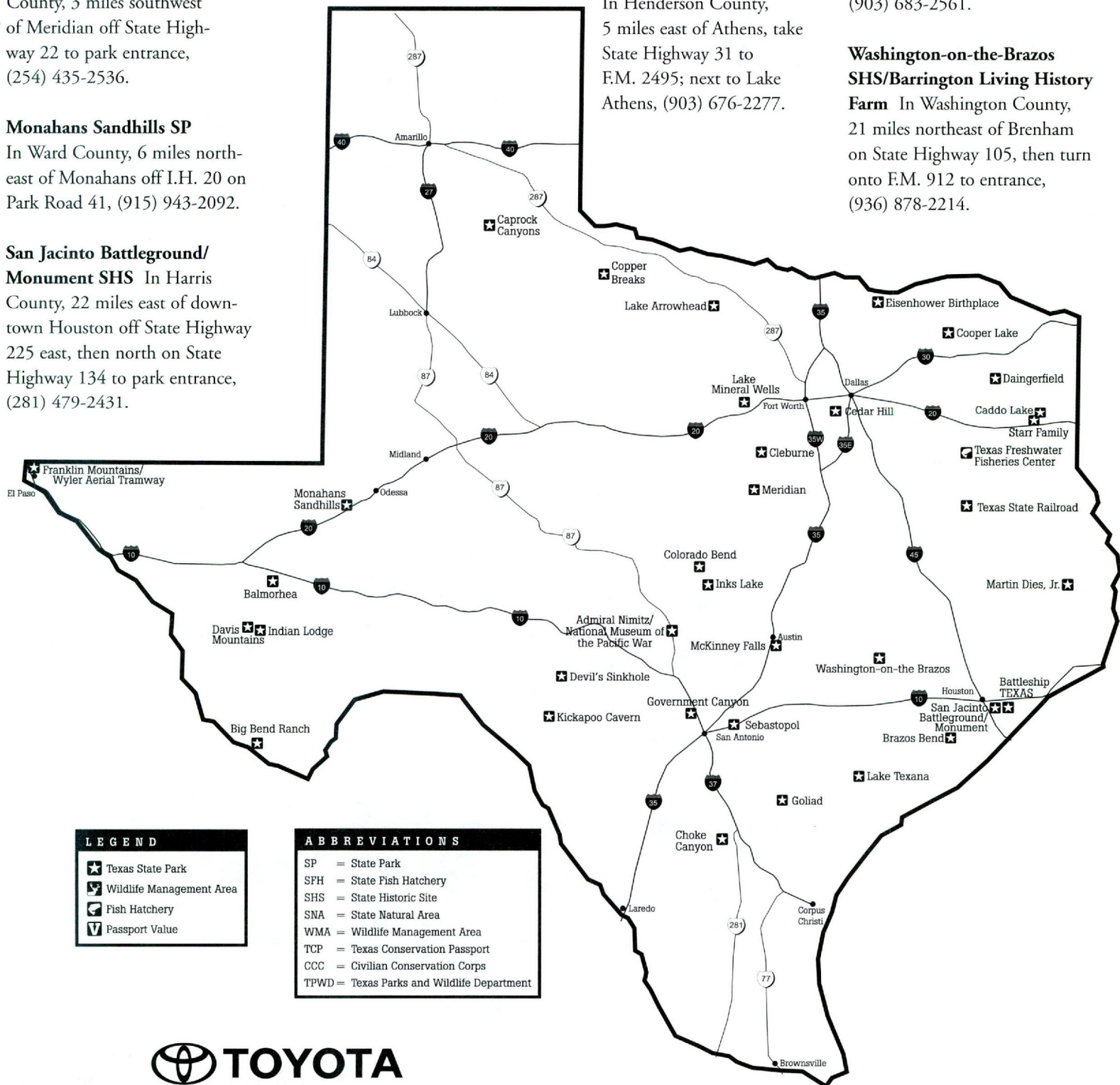
Sebastopol House SHS In Guadalupe County, in the city of Seguin, turn south at State Highway 46 and go 1 mile to U.S. Highway 90A (Court Street); turn east and go 1 mile to the park entrance, (830) 379-4833.

Starr Family Home SHS In Harrison County, in the city of Marshall on the corner of Travis and Grove Streets, (903) 935-3044.

Texas Freshwater Fisheries Center In Henderson County, 5 miles east of Athens, take State Highway 31 to F.M. 2495; next to Lake Athens, (903) 676-2277.

Texas State Railroad SP In Anderson County, in the city of Palestine 2 miles east of Loop 256 on U.S. Highway 84 to Palestine train station. In Cherokee County, 2 miles west of Rusk via U.S. Highway 84 to Rusk train station, (903) 683-2561.

Washington-on-the-Brazos SHS/Barrington Living History Farm In Washington County, 21 miles northeast of Brenham on State Highway 105, then turn onto F.M. 912 to entrance, (936) 878-2214.



Proud Sponsor of Texas Parks and Wildlife Programs

Consult a Texas highway map and these directions on pages 8-9 for secondary roads and other details.



PASSPORT People



Ned A. Ochs

Park Manager, McKinney Falls State Park

"I started studying wildlife science at Texas A&M University but along the way I was attracted to the new, progressive and growing field of Parks and Recreation," Ned said. When he graduated in 1972, Ned went to Maryland to work as a Ranger Naturalist, building trails and teaching outdoor programs.

"My father taught me a deep appreciation of the land but it was after graduation that I discovered a love of teaching too," he said. "I like showing people what can happen when wildlife habitat is lost and showing them what we can do to address the loss."

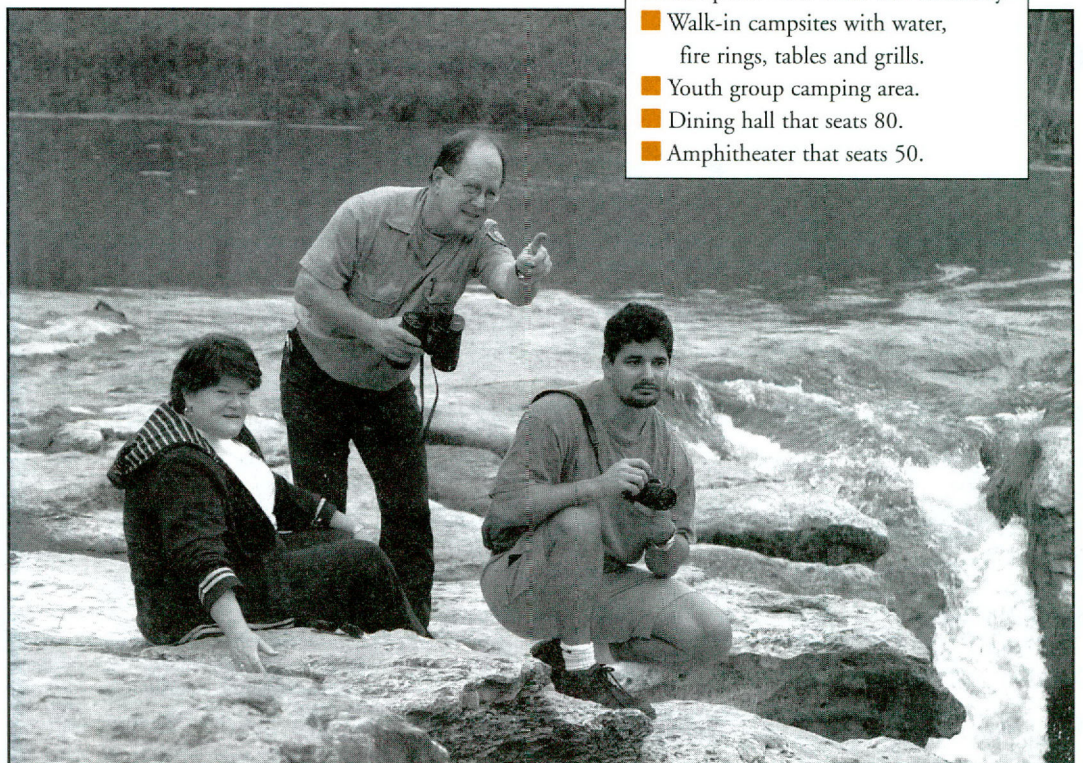
Ned started working at Palo Duro Canyon State Park in 1972 as Assistant Park Manager. In 1973, he moved to Bastrop State Park as Park Manager and in 1991, transferred to McKinney Falls SP as the manager there.

"Even though this park is close to Austin, we frequently count 17 different species of neotropical migratory songbirds here. Painted buntings arrive in late spring and stay into the summer. I take a class out this time of year to help people identify painted bunting calls so they can locate them. It's a good time of year to see the male performing his courting ritual on the ground."



IF YOU GO, McKINNEY FALLS SP HAS:

- Picnic areas with playgrounds, water and rest rooms.
- A 3-mile paved running trail.
- Screened shelters with bunkbeds (no mattresses).
- Campsites with water and electricity.
- Walk-in campsites with water, fire rings, tables and grills.
- Youth group camping area.
- Dining hall that seats 80.
- Amphitheater that seats 50.



At the falls on Onion Creek, Ned, pointing, leads a birdwatching walk.

See **Painted Bunting**, page 5.

Check with the park for weekend programs on spring wildflowers and birding.
<http://www.tpwd.state.tx.us/park/mckinney/images/mckifac.pdf>



Trail blazer

trek across texas

Bicycling in the Davis Mountains

The slopes are challenging in the mountainous terrain of Trans-Pecos West Texas. Out there in the Chihuahuan Desert where the land is dry and the spaces wide-open, the higher elevations make for comfortable cycling days with low humidity.

But, wheeling through these tame old hills, you will see few signs of their volcanic origins. Evidence of molten lava does exist where a sheer cut has been made through hard rock for road building. For example, in the Davis Mountains SP, a geologic jumble of rock in varying colors with obvious lava intrusions shows up dramatically along Skyline Drive. That steep road has switchbacks that lead from the park's main camping area to a high overlook, see page 13.

From atop the ridge, there's a wide view of the mountains all-around. While the drive ends at the top, a hiking/biking trail meanders down the other side to the restored Fort Davis National Historic Site.



IF YOU GO TO DAVIS MOUNTAINS SP:

Amphitheater Programs on cowboys, animals and local history are presented every Wednesday through Saturday night in June. Exhibits, a permanent wildlife watering station and viewing blinds are located in the park. The Limpia Canyon Primitive Area includes 10 miles of backcountry hiking trails, campsites and secured parking.

RATTLESNAKE RACING ADVENTURE RACES

Test your skills at mapping, mountain biking, hiking, swimming, snorkeling, kayaking and more in the lake and on the trails. Earn points for the nation-wide Nissan Xterra Challenge. June 7 from 8 a.m. to 6 p.m. and again from 6 p.m. to 8 a.m. Free for TCP members; \$2 adults, \$1 senior citizens, free children 12 and under. Contact leiza@westex.net for entry fees and more. **Copper Breaks SP** (940) 839-4331.

COYOTE CLASSIC MOUNTAIN BIKE RACE

Annual mountain bike race held the first Sunday of April to officially kick-off the New Mexico off-road series. Beginners, intermediate and advanced riders are welcome. Registration is handled through The Bicycle Company of El Paso, the race producer. April 6 from 8 a.m. to 2 p.m.; reservations required. **Franklin Mountains SP** (915) 566-6441.

CANOE DEVIL'S WATERHOLE

See unique geological and natural features of the Hill County from a canoe and learn about the influence of regional geology on plants, animals and the economy. Canoes, paddles and life jackets provided, along with brief skill review, but participants are expected to have basic canoe skills. Wheelchair accessible if transferable. May 1, 8, 22, 25, 29 and every Thursday in April and June from 4 to 6 p.m. Fees \$5 TCP members, \$6 non-members, \$5 senior citizens, \$5 children 12 and under; reservations required. **Inks Lake SP** (512) 793-2223.

WILD CAVE ADVENTURE

A rugged 2-hour hike across fields of loose boulders into the heart of the Great Kickapoo Cave. Pass the 80-foot tall twin columns, the largest known formation of its kind in Texas. You should be in good physical condition, must bring two light sources per person and sturdy hiking boots. Liability release required. April 5, 19; May 3, 17, 31; June 14. Call for times and fees; reservations required. **Kickapoo Cavern SP** (830) 563-2342.



Field Trips



Look under Drive Across Texas on pages 8-9 for travel directions and phone numbers.

BIG BEND RANCH SP

(915) 229-3416

The adventures in the high desert have limited space and require advance reservations and prices include meals, bunkhouse lodging and, where needed, horse rentals. One-day excursions do not include meals or lodging.

Photograph The Chihuahuan Desert – Capture images of flora and fauna from rather inaccessible scenic overlooks. April 4 to 6. Fees \$341 TCP members, \$350 non-members.

Longhorn Cattle Drive – Come round up the park's longhorn cattle in a three-day horseback ride into rugged country on a working ranch. April 11 to 13. Fees \$641 TCP members, \$650 non-members.

Spring Trail Ride – Horseback exploration of remote areas with rather inaccessible scenic overlooks. April 18 to 20, 25 to 27; May 9 to 11. Fees \$441 TCP members, \$450 non-members.

Native Plant Weekend – Learn Chihuahuan Desert common plants and their many uses for plant fibers, medicine, food and dyes. May 2 to 4. Fees \$266 TCP members, \$275 non-members.

Madrid Falls Excursion – Ride a 4-wheel drive vehicle to within two miles of Madrid Falls and then hike the rest of the way to see the second highest

waterfall in Texas. May 3; June 14. Fees \$72 TCP members, \$75 non-members.

Fresno Canyon Excursion – Ride a 4-wheel drive vehicle into Fresno Canyon to check out its flora, fauna, geology and archaeology. May 17; June 21. Fees \$72 TCP members, \$75 non-members.

Guale Mesa Excursion – Ride in a 4-wheel drive vehicle into remote canyon lands and see some spectacular vistas. May 24; June 28. Fees \$72 TCP members, \$75 non-members.

CAMEL TREKS

(866) 6CAMELS

E-mail: info@texascamelcorps.com

Ride with the Texas Camel Corps through part of the area covered by Lt. William Echols's 1859/1860 Big Bend expedition. Scheduled dates or custom dates available. Treks include camels, guides, meals and lodging.

KID FISH

JUNE 7 IS FREE FISHING DAY IN

TEXAS – On this day anyone can fish in Texas waters without a fishing license.

Children's Fishing Derby – Children 6 to 12 learn to experience the fun of fishing and being outdoors. May 3 and 17 from 8:30 a.m. to noon; reservations required. **Washington-on-the-Brazos SHS** (936) 878-2214.



Kids Fish Flop Tournament

– Our 13th Annual event is open to kids 16 years and under. Prizes in three age categories: 6 and under, 7 to 11 and 12 to 16. Tournament desk will be located at the Walnut Ridge boat ramp. June 7 from 8 a.m. to noon. **Martin Dies, Jr. SP** (409) 384-5231.



Kids Fishing Day – Bring your fishing equipment and join in the fun during the annual Free Fishing Day. Open to kids 12 and under. There will be drawings for prizes. June 7 from 9 to 11 a.m. **Cooper Lake SP/South Sulphur Unit** (903) 395-3100.

Kids Fishing Tournament – Bring your own fishing pole to our 11th Annual event for kids between 3 and 16 years old. A limited number of fishing poles are available for kids who don't have one and bait is available while supplies last. Prizes are awarded in different age groups. Sign up 8:30 a.m. to 4 p.m. at the Group Dining Hall. June 7 from 2 to 4 p.m. **Lake Arrowhead SP** (940) 528-2211.

WILDFLOWER SEASON

Blooms of Spring – A talk on the wildflowers of the native prairie grasslands and the stories behind them. Talks take place on April 5, 26 and May 17, 31 from 9:30 to 11 a.m. and

on May 10, 24 from 2 to 3:30 p.m. Call to confirm program. **Cedar Hill SP** (972) 291-5940.

Wildflower Walk – Go along the Shoreline Nature Trail and learn to identify wildflowers of the Blackland Prairie. May 3 from 10 to 11 a.m. **Cooper Lake SP/Doctors Creek Unit** (903) 395-3100.

Wildflower Walk, Bicycle Ride – Join park interpreter, David Owens, for a walk in the park or bike ride on the trailway to identify spring flowers and learn plant natural history and folklore. Walk on May 3 from 9:30 to 11 a.m., 2:30 to 4 p.m. Bicycle Ride on May 10 from 10 to 11:30 a.m.; reservations required. **Lake Mineral Wells SP & Trailway** (940) 328-1171.

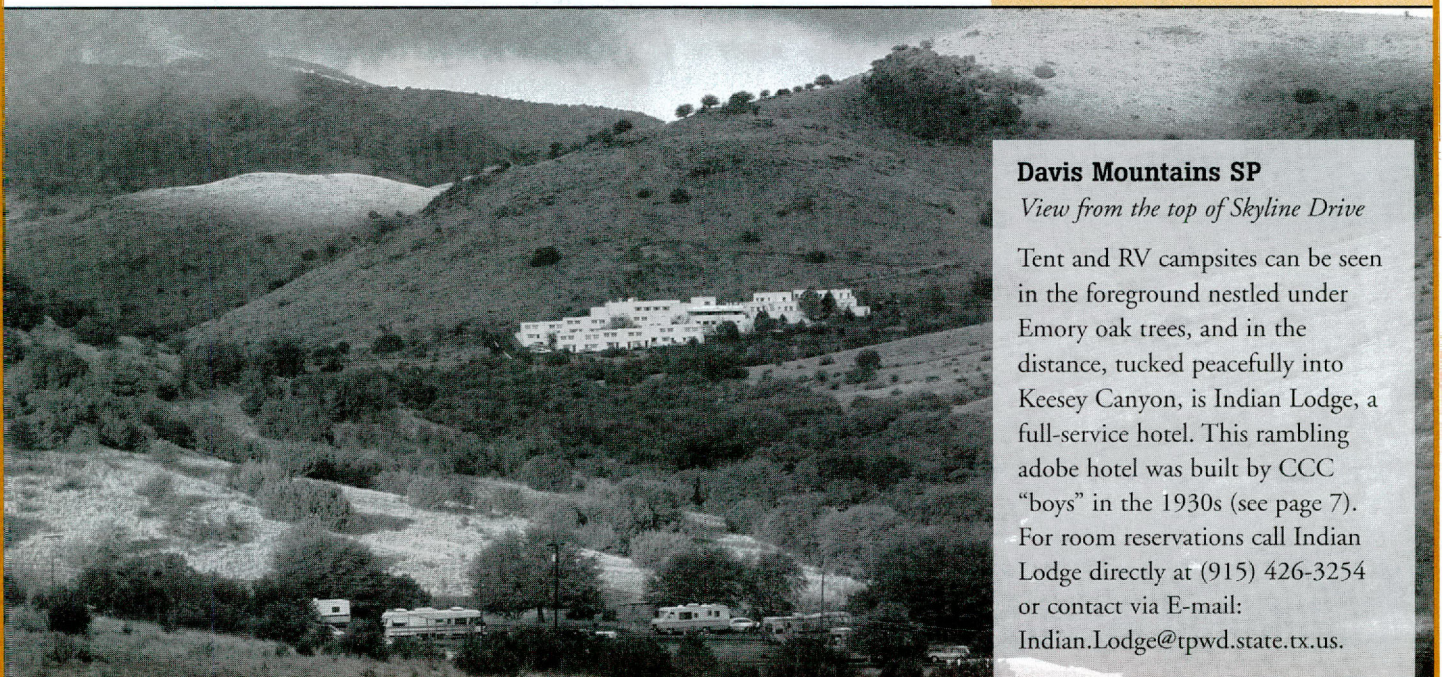
Wildflower Tour – Ride down the trailway and view the flowers of the season. May 24 from 10 a.m. to noon. Fees \$15 adults, \$10 children 12 and under; reservations required. **Caprock Canyons SP & Trailway** (806) 455-1492.

TEXAS STATE RAILROAD SP

(800) 442-8951 in state
(903) 683-2561 out of state

School Steam Train Excursions – A day trip for students of all ages that includes an educational, 1-1/2-hour steam train ride, engine cab tours and a park setting for an afternoon picnic. From 10:30 to noon. At the Rusk station in April 10-11, 17, 24-25. At the Palestine station May 1-2, 8-9, 15-16. Fees \$8 adults, \$4 children 12 and under; reservations required.

Steam Engine Shop Tours – Visit our nationally recognized steam-engine restoration shops. Train engineers will be on hand to describe what it takes to keep a steam railroad line in operation while you see steam engines, passenger coaches, business coaches and other historic railroad equipment. Rusk station, June 14 from 3 to 4 p.m.



Davis Mountains SP

View from the top of Skyline Drive

Tent and RV campsites can be seen in the foreground nestled under Emory oak trees, and in the distance, tucked peacefully into Keesey Canyon, is Indian Lodge, a full-service hotel. This rambling adobe hotel was built by CCC "boys" in the 1930s (see page 7). For room reservations call Indian Lodge directly at (915) 426-3254 or contact via E-mail: Indian.Lodge@tpwd.state.tx.us.



CCC Construction at Daingerfield SP

Daingerfield SP, the lovely picnic place in the pines featured on page 4, was built like many other CCC parks. An earthen dam was cut in the landscape to create a small lake. A winding road was surveyed and trees were felled to produce a scenic drive and finally buildings were constructed of local stone and timber. Company 2891 labored here from 1935 to 1938. They left behind a landing pier, picnic area, buildings and cabins.

*CCC Company 2891
at work on the roads.*



*Men and machines build
a dam at Daingerfield SP,
ca. 1933.*



PASSPORT Values

TEXAS FRESHWATER FISHERIES CENTER

(903) 676-2277 • www.tpwd.state.tx.us/fish/infish/hatchery/tffc/index.htm

Visit the Texas Freshwater Fisheries Center to discover Texas under water. Passport members get half off the regular fees when you present your paper license. With its aquaria, underwater shows and outdoor fishing pond, TFFC is a perfect destination for a family outing. Regular fees are: \$5.50 adults, \$3.50 for children from 4 to 12 and \$4.50 for seniors over 65.

Passport Journal

April 2003 – June 2003

Vol. 12, No. 2

Texas Parks and Wildlife Department

To manage and conserve the natural and cultural resources of Texas and to provide hunting, fishing and outdoor recreation opportunities for the use and enjoyment of present and future generations.

GOVERNOR OF TEXAS

Rick Perry

COMMISSION

Katharine Armstrong,
Chairman **Austin**

Ernest Angelo, Jr.,
Vice-Chairman **Midland**

John Avila, Jr. **Fort Worth**

Joseph B.C. Fitzsimons **San Antonio**

Alvin L. Henry **Houston**

Philip Montgomery **Dallas**

Donato D. Ramos **Laredo**

Kelly W. Rising, M.D. **Beaumont**

Mark E. Watson, Jr. **San Antonio**

Lee M. Bass,

Chairman-Emeritus **Fort Worth**

Executive Director

Robert L. Cook

Communications Director

Lydia Saldaña

JOURNAL STAFF

Emily Carter Editor

Dianne Sebai Events Editor

Darcy Bontempo Marketing Director

Texas Conservation Passport

4200 Smith School Road

Austin, TX 78744

FAX: (512) 389-8029

E-mail: passport@tpwd.state.tx.us

Passport Journal

(ISSN 10832823) (USPS 012968)

is published quarterly by

Texas Parks and Wildlife Department,

4200 Smith School Road, Austin, TX 78744.

The \$50 membership fee includes the

\$4.95 annual cost of this publication.

Periodicals Postage Paid at Austin, TX.

POSTMASTER:

Send address changes to

Passport Journal

4200 Smith School Road

Austin, TX 78744

© 2003 Texas Parks and Wildlife Department

GETTING IN TOUCH

- 1 (800) 792-1112, press extension for Texas Conservation Passport
- www.tpwd.state.tx.us
- passport@tpwd.state.tx.us

PARK RESERVATIONS

- (512) 389-8900 (also cancellations)
- TDD/TDY line (512) 389-8915
- State parks accept Discover, MasterCard and Visa for payment and reservation deposits. Monday thru Friday 9 a.m. - 8 p.m., Saturday 9 a.m. - 12 p.m. Best days to call are Wednesday - Friday. Closed on major holidays. Voice mail - 24 hours a day.
- Indian Lodge (915) 426-3254
- Texas State Railroad (800) 442-8951

RESERVATIONS BY FAX, INTERNET OR E-MAIL

- Must be made four days in advance of requested date of arrival at the park. If you choose this option, include a phone number for contact.
- FAX: (512) 389-8959
- E-mail: reservations@tpwd.state.tx.us
- Internet: www.tpwd.state.tx.us
- Reservations accepted 24 hours a day.

WILDLIFE MANAGEMENT AREAS

- Call individual areas on a weekday, 8-9 a.m. and 12-1 p.m., to make sure you can have access. TCP members get free entry, non-members pay a \$10 limited use permit. Event listings include phone numbers.
- Everyone in a member's vehicle gets in free at wildlife management areas when the WMA is open to the general public. WMAs may be closed for research and will be closed during hunting season.

WINDSHIELD DECAL AND PAPER LICENSE

- Your TCP includes both a windshield decal and a paper license.
- The windshield decal is your vehicle pass and must be permanently attached to the vehicle windshield to receive the free entrance benefit.
- You must also keep the paper license since you may be required to show it when you enter a park regardless of whether you enter in a vehicle or by alternate means of transportation. You may also be required to show your driver's license with your paper license.
- If you choose to enter Texas state parks on foot, by bicycle, motorcycle, airplane, boat or rental car, you must carry the paper license with you and you may be required to show your driver's license also. Three visitors may enter with you in this fashion.

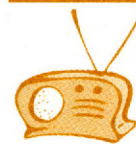
DUPLICATE DECALS

- If you plan to use more than one vehicle you will need **duplicate** windshield decal(s).
- They cost \$15 each.
- Each duplicate decal provides one free tour at historical sites for the member.
- Up to two duplicate decals may be purchased.

REPLACING YOUR DECAL

- If you sell your vehicle or replace your windshield during the year of membership, you can take a piece of the windshield decal and/or your paper license to any Texas state park and purchase a replacement windshield decal for \$5. You will be asked to sign an affidavit regarding your loss of the windshield decal.

STAY CONNECTED . . .



TUNE US IN

Hear all about parks and more on the *Passport to Texas* radio series. Visit www.passporttotexas.org to find a station in your listening area.



TURN US ON

See the great outdoors each week on PBS-TV affiliates statewide. Check the TV link on our Web site for times and stations.

SUBSCRIBE TO . . .



Get *The OUTDOOR MAGAZINE of TEXAS* for just \$14.95 a year and save 67% off the cover price. Call (800) 937-9393 to order. Give the operator the code of **KTCP26**.



Go to our Web site for a complete listing of state park events

www.tpwd.state.tx.us




A Legacy of the 1930s

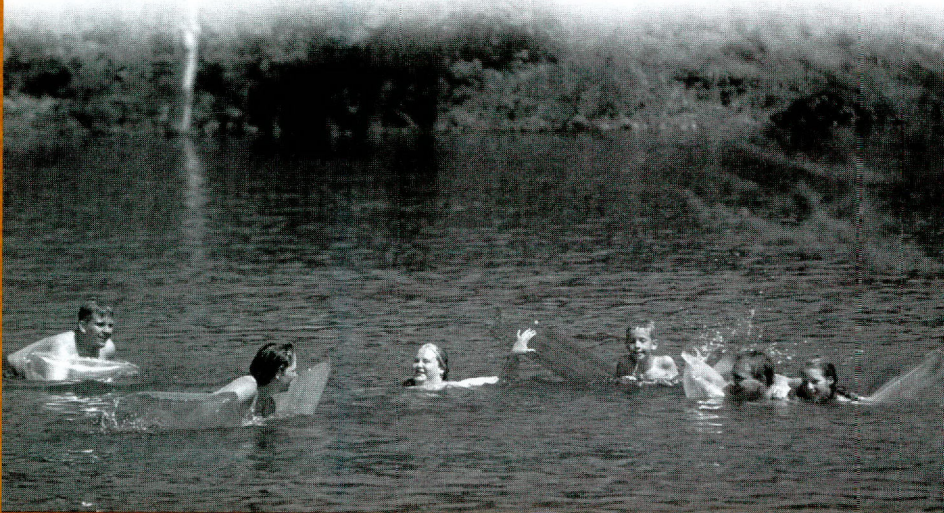
CCC CO. NO. 1827-CAMP SP-12-T MERIDIAN, TEX, SEPT. 1934
LT. ALFRED R. TETER, COM'D'G



Seventy years ago, an era of national hardship led to the Civilian Conservation Corps (CCC). Initially conceived as a "forest army" to reclaim over-cut or burnt-out woodlands, its scope was broadened to include the development of recreation parks. Throughout this issue of the *Journal*, you will find references to CCC and the "boys" who built the original Texas State Park system (see pages 7 and 14). Most of them are gone now but their faces stare back at us from old photos. Faces filled with hope and excitement; faces renewed by the promise of work and a paycheck.

Take a weekend trip across our great state and stop at one of the state parks marked with the  on pages 8-9. There you will find structures built by the CCC "boys" from National Park Service architectural designs. The buildings relate to the local setting, were built of native materials and finished with simple tools; they represent an enduring legacy of craftsmanship in a style now called "NPS Rustic."

The men pictured above built the dam for this lake at Meridian State Park, see also page 3.



DRIVE TEXAS WILD FOR BLUEBONNETS!



Order your \$25 conservation license plate at 1 (800) 792-1112. Proceeds benefit Texas State Parks.

TCP MEMBERSHIPS

The \$50 Texas Conservation Passport membership is good for entrance to more than 120 state parks for 12 months and members also receive a subscription to this quarterly *Passport Journal*. Member fees provide much needed support for Texas State Parks.



Dispersal of the publication conforms with Texas State Documents Depository Law, and it is available at Texas State Publications Clearinghouse and/or Texas Depository Libraries. PWD BR K0700-144 (3/03)