

P400.6
P268
2000/1-3



TEXAS CONSERVATION PASSPORT

JOURNAL

Volume 9, Number 1 · Your pass to state parks and more. · January 2000 - March 2000

Government Publications
Texas State Documents

MAY 03 2000

Depository
Dallas Public Library



The People

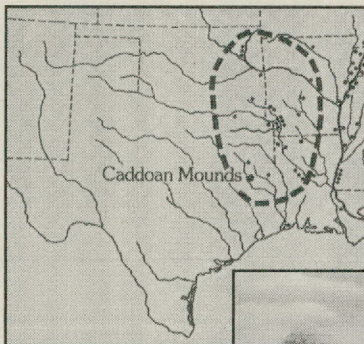
WHAT'S IN A NAME?

Welcome to the year 2000! The *Passport Journal* commemorates this millennial event by casting an eye back to A.D. 1000 and to the people who inhabited the parcel of land we now call Texas.

One way to understand ancient populations is to strip away some Eurocentric concepts – starting with tribal names. Often the very names that we apply to Native Americans are legacies from European explorers rather than the name a cultural group gave to itself. One familiar example is the word “Indians,” it was derived from European expectations of discovering a trade route to India.

The names of Texas cultures prior to European contact are lost and the names from the Contact Period are likely to be poor translations.

For example, when some early Spaniard asked the *Zuñi* to name a nearby tribe he was told something like, “They are the Warriors of the Mountains.” It was recorded as *Lipan Apache*. What do the *Lipan Apache* really call themselves? Their traditional name is *Tiñde* and like a host of other tribal people, the name they give themselves simply means: The People.



Limits of the Caddoan linguistic group.

How Texas Got Its Name

As European explorers advanced into the New World wilderness, they not only recorded names of native people, they also recorded place names. Spanish explorers, chancing upon an East Texas farming village of *Hasinai* people, were greeted in the *Caddoan* language with a word that sounded like *tayshas*, and meant “friends or allies.” The greeting was recorded as a place name and became the English word: **Texas**.

The *Caddoan* speaking *Hasinai*s occupied a compact area in the Pineywoods – *Hasinai* means “our own people.”

Artistic interpretation of an Early Caddo village scene at Caddoan Mounds SHP; see also pages 3, 12-13.



© NCLA DAVIS



WIND BENEATH OUR WINGS



STATE PARKS DIVISION

David Ing

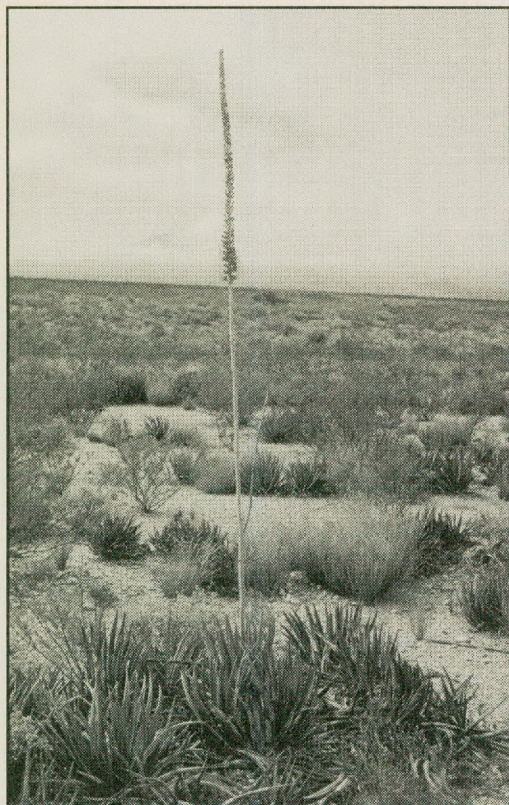
Cultural Resource Coordinator

“The first time I came out to the Big Bend region in 1954, I fell in love with it,” said David, Big Bend, cultural resources coordinator for state parks.

“In the late 1960s, I helped survey Big Bend National Park for archeological sites while I was a student. When I graduated in 1969, I had the good fortune to be hired as the first Texas Parks and Wildlife archeologist.”

“Although I have worked in East Texas and other Texas regions, the highlight of my career was conducting field surveys at Big Bend Ranch SP in the 1980s and 1990s. It was a fantastic opportunity to work with a team in the grand isolation of the Chihuahuan Desert wilderness.

“Of the many fascinating sites indicating that ancient humans lived in this desert, two types really intrigue me. The rock art that we protect in our Trans-Pecos parks and a feature called a ring midden. Archeological evidence in the ring middens tells us that desert people cooked sotol and lechuguilla roots by placing them in hot rocks to bake and then tossed the rocks away making a ring midden.”



Lechuguilla, a desert shrub in the agave family, grows only in the Chihuahuan Desert. The root bulbs were cooked and eaten, the leaf fibers were made into mats, net carrying bags, baskets and sandals.

© BILL REAVES

The Late Prehistoric Period

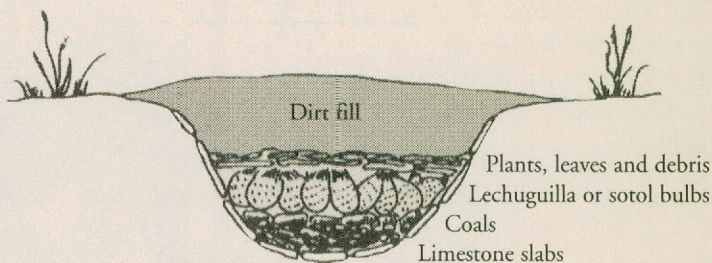
Stone tools, cooking pits and hearths, the foundations of houses or the remnants of post holes, and more, yield archeological evidence for the Late Prehistoric Period.

An interpretation of the Texas data suggests that well before A.D. 1000 hunting technology expanded from the use of atlatls and spears to include the adaptation of bows and arrows.

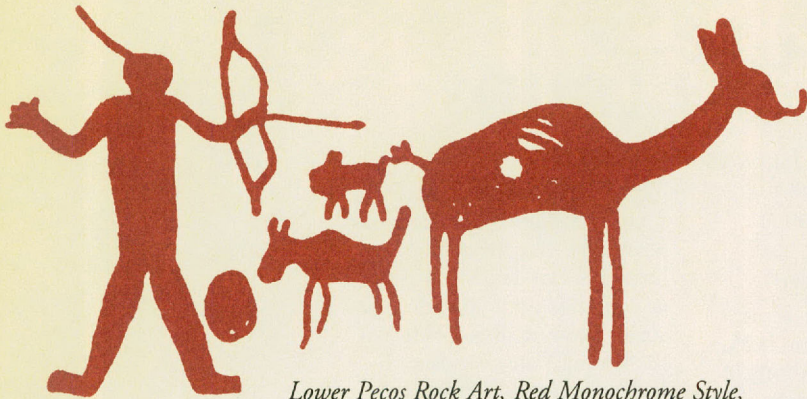
Also the technical skills for pottery making were being learned across cultural barriers.

The presence of stone arrow points and earthen pot sherds usually signals a site dating to the Late Prehistoric Period.

Cultural remains in Texas indicating the Late Prehistoric first appear as early as A.D. 200 and persist through A.D. 1000 into the European Contact Period.



Ring middens of the Big Bend region are the remains of rock-lined pits where the bulbs of lechuguilla and sotol were slowly roasted or steamed.



Lower Pecos Rock Art, Red Monochrome Style, ca. A.D. 1000. The presence of a bow and arrow in the image places it in the Late Prehistoric Period.

Archeology in State Parks

THE PEOPLE OF TEXAS

By A.D. 1000, every natural region in Texas was sparsely inhabited. Cultural practices varied from a hunting and gathering way of life to village farming, but the one common feature shared by most of the People was knowledge of bow and arrow technology and the technical skills for making pottery.

CADDOAN CULTURE - marked by major village and mound sites, maize farming and high-status burials, with exotic burial goods. An important early Caddoan site in Texas is preserved at Caddoan Mounds SHP in the East Texas Pineywoods.

JORNADA MOGOLLON CULTURE - marked by circular, partially below-ground, pit houses in the early phase that were later replaced by above-ground blocks of rooms. Corn, beans and squash supplemented their diet of wild plants and animals. Located in the Hueco Bolson between the Franklin and Hueco mountains

near El Paso, they created ceremonial rock art, preserved at Hueco Tanks SHP, that shows Puebloan influences.

BRAVO VALLEY FARMERS - a culture that spread downstream on the Rio Grande. These people lived in closely clustered, partly underground, adobe houses. They hunted, fished, planted crops, and collected seeds, fruits and roots. Exhibits of this culture are in the Barton Warnock Environmental Education Center in Lajitas.

PANHANDLE TRADERS AND FARMERS - native people from many areas came to the Texas Panhandle to hunt and process bison for themselves and for trade. They also quarried flint for making stone points for arrows and traded it as well. The quarries are preserved at the Alibates National Monument, and exhibits of their lifeways can be found at Palo Duro, Lubbock Lake Landmark and Caprock Canyons state parks.

Rock Art

BIG BEND COUNTRY

Seminole Canyon SHP Presa Canyon Tour - Jan. 15; Feb. 5, 26; March 25. Go on an all-day hike, in the lower canyons, to view the rock art sites in the closed area of the park. 8:30 a.m.-5 p.m., fees \$15 TCP members, \$20 non-members, reservations required, 915-292-4464.

Panther Cave Boat Tour - Feb. 19; March 18. This remote tour begins at the park headquarters, then you are shuttled to the back of the park where you will hike for 1/2 mile to meet the boat to Panther Cave. This site contains some of the best preserved Lower Pecos River-style pictographs in the state. Shuttles leave throughout the day beginning at 8:30 a.m. and ending at 2 p.m., fees \$15 TCP members, \$20 non-members, reservations required, 915-292-4464.

Upper Canyon Tour - Feb. 12; March 11. Tour includes hiking in the upper canyon in the closed area of the park. Hikers will be able to view a combination of rock art and original 1882 railroad sites. 8:30 a.m.-noon, fees \$8 TCP members, \$10 non-members, reservations required, 915-292-4464.

White Shaman Tour - Jan. 8, 15, 22, 29; Feb. 5, 12, 19, 26; March 4, 11, 18, 25. Guided hiking tour on the Galloway White Shaman Preserve. A 2-hour tour into the Pecos River canyon to view the White Shaman. This pictograph, done in Pecos River style, has great detail. 12:30-2:30 p.m., fees \$10 adults, free to children 12 and under, reservations available but not required, 1-888-525-9907, 915-292-4464.

Fate Bell Cave Dwelling Tour - Jan., Feb. & March. Every Wednesday thru Sunday. Take a walking, guided tour to one of North America's oldest cave dwellings whose walls are covered with Pecos River-style pictographs, some 4,000 years old. Tours start at 10 a.m. and 3 p.m., fees \$3 per-person, \$1 children 6-12, reservations available but not required, 915-292-4464.

PANHANDLE PLAINS

San Angelo SP Petroglyph Tour - Jan. 29; Feb. 19; March 25. Visit the site of a Native American village and see Native American rock art. Less than 100 yard walk. Meet at South Shore entrance to park. 1-3 p.m., in addition to the park entry fee, the event fees are, \$1 TCP members, \$2 non-members, \$1 children 12 and under, reservations available but not required, 915-949-4757.

For artistic interpretations of life in Texas ca. A.D. 1000, see pages 12-13.

Hueco Tanks Rock Art - see page 14



EXPLORE THE REAL TEXAS

Texas History

GULF COAST

Matagorda Island SP History of Matagorda Island - Jan. 23; March 18. Take a history tour of this 5,000 year-old island with trips to the Lighthouse, some Civil War trenches and grave sites. Bring a lunch for picnicking on the beach. 10 a.m.-5 p.m., fees \$15 TCP members, \$20 non-members, \$10 children 12 and under, reservations required, 361-983-2215.

PRAIRIES AND LAKES

Monument Hill/ Kreische Brewery SHP Kreische Brewery Weekend Tour - Jan., Feb. & March. Every weekend weather permitting. A trained docent leads explorers to archeological ruins of one of the first Texas commercial breweries. Built and operated by German immigrant H.L. Kreische, it was once the third-largest operating brewery in the state. Learn about 19th century brewing practices and see Kreische's outstanding skills in stone masonry. First tour 2-3 p.m., second tour 3:30-4:30 p.m., fees free to TCP members, \$2 non-members, \$1 students, free to children 5 and under, reservations available for group tours, but not required for scheduled weekend tours, 409-968-5658.

Kreische House Tour - Jan. 2, 9; Feb. 6, 13; March 5, 12. Every first and second Sunday of the month. A trained docent will lead you through 1850s home of master stonemason H.L. Kreische. See his architectural accomplishments and his craftsmanship in the home he built. 1:30-4 p.m., fees free to TCP members, \$2 non-members, \$1 students, free to children 4 and under,

reservations available for group tours, but not required for scheduled weekend tours, 409-968-5658.

Stephen F. Austin SHP 2nd Annual Colonial Texas Heritage Festival - March 25. Join us for demonstrations of pioneer crafts, reenactors, arts and crafts booths, food booths and a day of fun for children and adults. 9 a.m.-6 p.m., fees \$1 per-person, 409-885-3613.

Washington-on-the-Brazos SHP Texas Independence Day Celebration - March 4, 5. Join us for the 164th annual celebration of the Texas Declaration of Independence from Mexico. Historical reenactments, craft demonstrations and period music. Special commemorative ceremony Sunday afternoon and a re-dedication and grand opening of Barrington Living History Farm. 10 a.m.-4 p.m., 409-878-2214.

BIG BEND COUNTRY

Fort Leaton SHP The Nitty-Gritty of Adobe - March 18, 19. You are invited to learn how to make adobe mud and bricks and help us re-mud a bit of old Fort Leaton SHP and at the same time get the plans and instructions on brick building. 9 a.m.-3 p.m., fees \$2 adults, \$1 children 12 and under, reservations required, 915-229-3613.

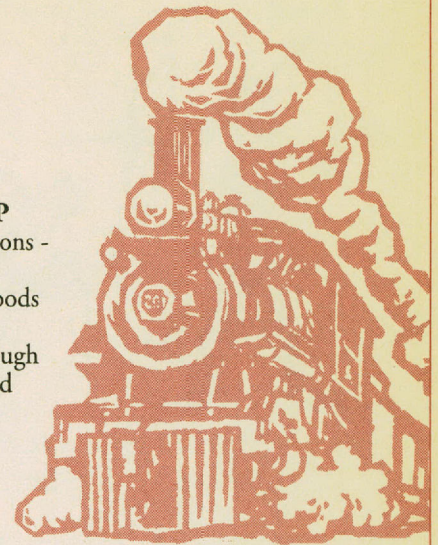
GULF COAST

San Jacinto Battleground SHP Houston Area Ford's of the 50s Club 17th Annual Old Car Picnic - March 12. Hundreds of classic cars none newer than 1980 models.

Trains

PINEYWOODS

Texas State Railroad SHP Dogwood Railroad Excursions - March 24, 31. Enjoy the beautiful east Texas dogwoods as you relax on a 50-mile steam train excursion through the rolling Pineywoods and hardwood creek bottoms. 11 a.m.-3 p.m., fees \$15 adults, \$9 children 3-12, reservations required, 1-903-683-2561 or 1-800-442-8951.



In Balance with Nature

SOUTH TEXAS PLAINS

Chaparral WMA Burning Seminar - Jan. 19. A primer on procedures and effects of burning in the western Rio

Grande Plains. Opportunity for a hands-on experience, weather permitting. 8 a.m.-5 p.m., fees \$8 per-person, reservations required, 830-676-3413.

Preserving The Past

Gates open at 8 a.m. and awards are presented at 2 p.m. Registration for entering vehicles in show is \$5. So bring your picnic basket and enjoy good food, good folks and good fun. 8 a.m.-3 p.m., 281-479-2431.

HILL COUNTRY

Lyndon B. Johnson SHP Quilt Show - March 4, 5. In recognition of women's history month, we will be exhibiting over 50 old and new quilts at the park. Quilting demonstrations will be held during the show. 9 a.m.-4 p.m., admission by donation, 830-644-2252.

Biking

HILL COUNTRY

X Bar Ranch Winter Bike Ride - Jan. 14-16. Come for a winter get-away. Enjoy the trails of the X Bar Ranch. There are three loops ranging from 4 to 12 miles, scenic road rides available from the ranch. Lodging, camping and meals available. Lodging prices \$45 per-person double occupancy, camp and ride \$8 per-person. Call for more information, 888-853-2688.



Story & Song

BIG BEND COUNTRY

Fort Leaton SHP A Stop Along the Chihuahua Trail - Feb. 18. Join the staff in the rustic setting of Fort Leaton for stories, songs, and poetry from the historic Chihuahua Trail and El Fortin/Fort Leaton SHP. 6:30-9:30 p.m., 915-229-3613.

HILL COUNTRY

Kerrville-Schreiner SP Lies, Legends and Little Known Facts of the Texas Hill Country - Jan. 26. Have you ever wondered if the stories you heard about the Hill Country are true? Find out about the folklore of the area in this entertaining program. Call for times and more information, 830-257-5392.

Music by the River - March 18. Come and enjoy some live music along the Guadalupe River. 8-10 p.m., call for more information, 830-257-5392.

Stargazing

HILL COUNTRY

Kerrville-Schreiner SP Stargazing - March 14. Join local experts and take a night-time tour of the sky over the Hill Country. Call for time and more information, 830-257-5392.

PANHANDLE PLAINS

Palo Duro Canyon SP Stargazing - March. Have you ever experienced stargazing Panhandle style? Bring the whole family to Palo Duro Canyon for an evening of beautiful starscapes, enlightening presentations and hot chocolate. Call for dates and times, 806-488-2227.

PANHANDLE PLAINS

Palo Duro Canyon SP Storytelling - March. The Storytellers of West Texas A&M University will be performing at Palo Duro Canyon. Come and enjoy an evening of entertainment and learning as these young performers exhibit their talents through the art of storytelling. Call for dates and times, 806-488-2227.

PINEYWOODS

Martin Dies, Jr. SP Cowboy Campfire Stories, Poetry and Songs - March 11. Join us at the amphitheater for an evening of cowboy entertainment and history. Bring your lawn chair or share a wooden bench. 7-8 p.m., 409-384-5231.

Big Thicket Tales, Unsolved Mysteries and Ghost Stories - March 25. Join us around the campfire at the amphitheater for an evening of story telling. Bring your lawn chair or share a wooden bench. 7:30-8:30 p.m., 409-384-5231.

San Angelo SP Stargazing Party - Feb. 26. Join the San Angelo Amateur Astronomy Club for deep space exploration. They will provide telescopes and answer your questions about the cosmos. Meet at the North Concho River Park. Sundown till 12 midnight, 915-949-4757.

Whodunit? Mystery

HILL COUNTRY

Longhorn Cavern SP Sam Bass Treasure Hunt/Mystery Game - Feb. 4-5. Descend into the depths of Longhorn Cavern and search for clues to determine if Sam Bass actually used the cavern. Participants will follow a set of clues, encounter costumed characters and search for money bags filled with gold coins! 7-9 p.m. Feb. 4, 10 a.m.-9 p.m. Feb. 5, prices vary from



\$100 to \$200 per-couple depending on lodging accommodations, reservations required, 512-756-4680.

Birdhouse Day

BIG BEND COUNTRY

Fort Leaton SHP Houses for Bats and Birds - Feb. 5. Learn how to attract and care for bats and birds living in our area during this workshop. We will build houses for bats and birds and a small donation to cover costs of materials will allow participants to keep the houses they build. 9 a.m.-3 p.m., 915-229-3613.

HILL COUNTRY

Kerrville-Schreiner SP Birdhouse Day - Feb. 5. After going on a birding hike we will put up birdhouses around the park. A question and answer seminar will be held dealing with all types of bird information. Call for more information, 830-257-5392.

Lyndon B. Johnson SHP Birdhouse Day - Feb. 5. Learn about birds and their habitat. Slide presentation, hands on activities. Fun for the whole family. 10 a.m.-1 p.m., 830-644-2252.

PINEYWOODS

Martin Dies, Jr. SP Birdhouse Day - Feb. 5. Youngsters participate in the inspection and cleaning of existing birdhouses in the park and the construction of new birdhouses. Participants may take a constructed birdhouse home for a \$5 donation. 9-11 a.m., 409-384-5231.

PRAIRIES AND LAKES

Cooper Lake SP/ Doctors Creek Unit Build a Birdhouse - March 11. Hear interesting facts about the natural history of the eastern bluebird. Learn how to build a bluebird house, 2-3 p.m., 903-395-3100.

Cooper Lake SP/ South Sulphur Unit Build a Birdhouse - March 18. Hear interesting facts about the natural history of the eastern bluebird. Learn how to build a bluebird house, 2-3 p.m., 903-945-5256.



Fishing

PRAIRIES AND LAKES

Rusk/Palestine SP Kid's Trout Fishing Day - Feb. 5. Free event for the kids to go fishing for rainbow trout. Lunch will be served for everyone. A drawing for prizes for all kids registered. 9 a.m.-1 p.m., 903-683-5126.

Texas Freshwater Fisheries Center February Film Fest - Feb. 4, 11, 18, 25. Great fishing films featured each Friday afternoon in the auditorium. 3:30 p.m. film begins, fee \$5.50 adults, \$4.50 senior citizens, \$3.50 children 12 and under, 903-676-BASS.

Fly Fishing Fest - Feb. 26. Learn about fly fishing, gear, travel opportunities and more. A show for new and experienced fly fishermen and all their friends. 9 a.m.-4 p.m., fee \$5.50 adults, \$3.50 children 12 and under, 903-676-BASS.

Spring Swap Meet - March 25. Join us for an outdoor swap meet featuring outdoor gear for sale and trade. Booths for rent to vendors for \$25 each. 9 a.m.-4 p.m., fees \$5.50 adults, \$4.50 senior citizens, \$3.50 children 12 and under, 903-676-BASS.

Fish-It's Fine Food - Jan. 28. Learn everything you need to know to prepare delicious, nutritious freshwater fish indoors and outdoors. Join us in the auditorium for classes with a noted chef followed by a fish cook-off and tasting. 2-7 p.m., fees \$5.50 adults, \$4.50 senior citizens, \$3.50 children 12 and under, 903-676-BASS.

BIG BEND COUNTRY

Franklin Mountains SP Guided Weekend Hikes - Jan. 1, 2, 15, 16; Feb. 5, 6, 19, 20; March 4, 5, 18, 19. Every first and third weekend. Learn about the cultural history of the area and the local flora and fauna as you hike a steep 3/4 mile up the side of the mountain to the Aztec Caves on the first Saturday and third Sunday, or hike 1-1/2 miles on the first Sunday or third Saturday to West Cottonwood Spring. Guided tours begin at 8:45 a.m. and last 2-3 hours. In addition to park entrance fee the tour fee is \$1 TCP members, \$2 non-members, reservations required, 915-566-6441.

HILL COUNTRY

Colorado Bend SP Gorman Falls Hike - Jan., Feb. & March. Every Saturday and Sunday. Caravan from park headquarters to the Gorman area of the park and then hike to below the falls. From trailhead it is a 1-1/2 mile round-trip hike over beautiful Hill Country terrain. No pets allowed on tour. No restrooms or drinking water available. 10 a.m. and 2 p.m. on Saturdays, 10 a.m. on Sundays, weather permitting. Fees \$3 adults, \$2 children 12-6, 915-628-3240.

PANHANDLE PLAINS

Palo Duro Canyon SP Nature Hike - Jan. 22; Feb. 26; March 25. Join us for an informative 2.5-mile nature hike through Palo Duro Canyon. We will learn about canyon history, wildlife, plant life and geology. Bring the whole family. 2-5 p.m., 806-488-2227.

San Angelo SP Dino Walk - Jan. 15; Feb. 12; March 4. Hike back in time to see tracks left over 200 million years ago by Permian period vertebrates. The hike is 3 miles total. Meet at the North Concho River Park. In addition to the park entry fee, the tour fees are \$1 TCP members, \$2 non-members, \$1 children 12 and under, reservations available but not required, 915-949-4757.

Macey's Ridge Hike - March 11. Five-mile hike, with moderate to rough terrain, to Macey's Ridge where an early pioneer was killed. Meet at North Concho River Park. 9 a.m.-noon. In addition to park entry fee, the event fees are, \$1 TCP members, \$2 non-members, \$1 children 12 and under, reservations available but not required, 915-949-4757.

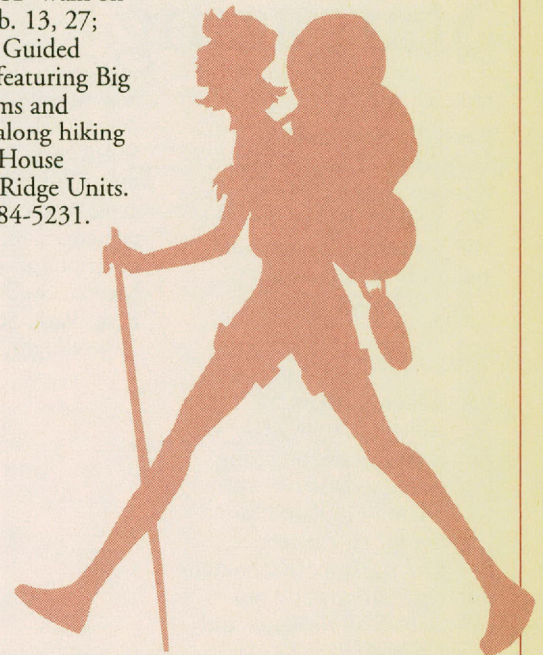
PINEYWOODS

Martin Dies, Jr. SP Walk on the Wildside - Feb. 13, 27; March 5, 12, 26. Guided interpretive hike featuring Big Thicket Ecosystems and related resources along hiking trails in the Hen House Ridge or Walnut Ridge Units. 9-10 a.m., 409-384-5231.

Village Creek SP Guided Nature Trail Hike - Jan. 15; Feb. 19; March 11, 25. Two-hour, 2-mile guided hike through remnants of old Texas Big Thicket. Exploring upland pine forests, mixed pine-hardwood forest, and bottomland forests with cypress/tupelo swamps. Topics covered include plants and animals found in the park. 9-11 a.m., reservations available but not required, 409-755-7322.

PRAIRIES AND LAKES

Stephen F. Austin SHP Historical Tour - Jan., Feb. & March. Every Saturday and Sunday. Walk around the area and learn about the life and times of Stephen F. Austin, and take a tour of the J.J. Josey museum. 1-5 p.m., fee \$1 per-person, 409-885-3613.





Birds

BIG BEND COUNTRY

Davis Mountains SP Bird Banding - March. Join us as we collect birds off the mistnets and band them. Learn how to determine the age of the birds and the name of the birds. 8-10 a.m., 915-426-3337.

GULF COAST

Fennessey Ranch Spring Migration Birding Count - March 18, 25. Go on a guided intensive spring migration birding count. An ornithologist will lead us through and array of habitats that are ideal for migrant birds. Last year we counted over 100 species in one day. Lunch provided on the banks of the Mission River. 8 a.m.-2 p.m., fees \$40 TCP members, \$44 non-members, reservations required, 361-529-6600.

Matagorda Island SP Intracoastal Whooping Crane Tour - Jan. 9; Feb. 9, 21; March 3. The group will travel by boat down the intracoastal waterway to observe birds along the shore. Visitors can view whooping cranes, ducks, loons, shorebirds and birds of prey in their winter habitat. Restrooms and snacks are available on the boat. Bring lunch, binoculars and bird book. 9 a.m.-5 p.m., fees \$15 TCP members, \$20 non-members, \$10 children 12 and under, reservations required, 361-983-2215.

Whooping Crane and Wildlife Bus Tour - Jan. 21; Feb. 5, 19; March 4. After arriving on Matagorda Island we will travel by bus to observe whooping cranes in their winter habitat. Also view white-tailed deer, jackrabbits, snakes, waterfowl, shorebirds, falcons and hawks. Northern Aplomado Falcons can be viewed in

their new home. Bring water; sack lunch, binoculars and bird book. 9 a.m.-5 p.m., fees \$12 TCP members, \$18 non-members, \$6 children 12 and under, reservations required, 361-983-2215.

HILL COUNTRY

Kerrville-Schreiner SP Bird Banding Seminar - Jan. 22; Feb. 26. Come along and witness how bird researchers catch, band and release wild birds. Bird banding is done to track the birds' migratory movements. 8 a.m.-till, call for more information, 830-257-5392.

Pedernales Falls SP Introduction to Birdwatching - March 18-19, 25-26. Learn how to use binoculars and field guide in you first lesson on birdwatching. You will also learn some basic bird biology and behavior and identification of birds in the field. Binoculars are provided or bring your own. Bring a sack lunch and wear comfortable walking shoes. 8:30 a.m.-2:30 p.m., \$20 per-person, reservations required, 830-868-7304.

X Bar Ranch Birding Tours - Jan., Feb. & March. Birding tours are available monthly, both guided and unguided. Over 7,000 acres of diverse West-Central Texas range land with nature trails for birds. Lodging, camping and meals available. Call for dates, times, and pricing. Reservations required, 888-853-2688.

PINEYWOODS

Martin Creek Lake SP Bald Eagle Tour - Jan., Feb. Bald eagle tours run twice daily. Closed on Wednesday. Come on board and tour the lake

area with us. View the bald eagle and other wetland wildlife in their winter habitat. Call for times, fees \$12.50 adults, \$6.25 children 6-4, free to children 3 years and under, reservations required, 903-836-4336.

PRAIRIES AND LAKES

Fairfield Lake SP Fairfield Lake Bald Eagle Tour - Jan. 1, 15, 22, 29; Feb. 5, 12, 19, 26. Every Saturday, weather permitting, participants board a boat for an overview of the bald eagle's status in Texas and the Fairfield Lake area. Then proceed on a 2-hour tour of the lake to view bald eagles and other wildlife in winter habitat. Dress warmly and bring binoculars. First tour 10 a.m.-noon, second tour 1-3 p.m., fee \$10 TCP member, \$15 non-member, \$10 children 16 and under, reservations required, 903-389-4514.

SOUTH TEXAS PLAINS

Bentsen-Rio Grande Valley SP El Canelo Ranch Bus Tour - Jan., Feb. & March. Every other Wednesday. Take a bus tour to one of the best birding hot spots in South Texas. Home of the ferruginous pigmy owl. Bring a sack lunch, binoculars, bird book and comfortable shoes. 7 a.m.-4 p.m., fees \$40 per-person, reservations required, 956-519-6448.

Kiskadee Bus Tour - Jan., Feb. & March. Tours are held every Tuesday and Friday. A bus tour to some of the best birding hot spots in Texas. Bring a sack lunch, binoculars, bird book and comfortable shoes. 7:30 a.m.-4:30 p.m., fees \$25 per-person, reservations required, 956-519-6448.

Splish Splash

GULF COAST

Matagorda Island SP Beachcombing - Jan. 22; Feb. 20; March 5, 19, 23. Spend 6 hours shelling and beachcombing on Matagorda Island. Transportation is an open four-wheel drive vehicle so dress for the weather. Information on mollusks, tropical drift seeds and the ecosystems of a gulf barrier island will be provided by the staff. Bring lunch and water. 10 a.m.-5 p.m., fees \$12 TCP members, \$18 non-members, \$6 children 12 and under, reservations required, 361-983-2215.

PINEYWOODS

Martin Dies, Jr. SP Floating the Forks - Jan. 15; Feb. 19; March 18. Go on a half-day guided canoe trip on the Angelina and Neches Rivers. Paddle through the Angelina/Neche/Dam B WMA from historic Bevilport to the Walnut Ridge Unit of the park. 8 a.m.-1 p.m., fees \$20 if you bring your own canoe, \$25 if we provide the canoe, third person in canoe \$7.50, reservations required, 409-384-5231.



Volunteer Work and Play

GULF COAST

San Jacinto Battleground SHP 7th Annual Rivers, Lakes, Bays n' Bayous Trash Bash - March 25. This annual clean-up of Houston area waterways involves nearly a dozen, separate sites, including San Jacinto Battleground.

Volunteers get gloves, lunch, entertainment and prizes free. Sign up on-line at www.trashbash.org to register for the event. 8:30 a.m.-1:30 p.m., reservations available but not required, 281-479-2431.

Living History

BIG BEND COUNTRY

Fort Lancaster SHP Living History Day - Jan. 22. Authentically costumed reenactors will provide interpretive lectures and give guided tours of Fort Lancaster. Pre-Civil War Infantry, topographical engineers and officer's wives will be available all day. 9:30 a.m.-4 p.m., fees free to TCP members, \$2 non-members, 915-836-4391.

HILL COUNTRY

Fort McKavett SHP Annual Living History Day - March 18. Reenactors will be representing different military and civilian impressions from the 1840s to the early twentieth century. There will be infantry and cavalry drills along with firing demonstrations. Several other activities will be going on throughout the day. 8 a.m.-5 p.m., fees \$1 TCP members, \$3 non-members, \$1 senior citizens, \$2 children 12 and under, 915-396-2358.

PRAIRIES AND LAKES

Fanthorp Inn SHP Stagecoach Rides - Jan. 8; Feb. 12; March 11. Ride on a replica of the 1850 Concord stagecoach over the old stagecoach roads in Anderson. Tour the inn while listening to dulcimer music and enjoy the poems of our cowboy poet. 1-4 p.m., fees \$4 adults, \$2.50 children 12 and under, 409-873-2633.

SOUTH TEXAS PLAINS

Fannin Battleground SHP Battle of Coletto Creek Reenactment - March 18. Witness the capture of Col. James Walker Fannin as the battle of Coletto is reenacted. Visitors will be able to view artifacts of the period. 11 a.m.-4 p.m., fees free to TCP members, \$2 non-members, free to children 12 and under, 361-645-2020.

Wildlife

GULF COAST

Brazos Bend SP Nature Programs - Jan., Feb. & March. There will be different programs every Saturday and Sunday ranging from live animal programs to slide shows to guided nature hikes. Call the park for more details, 409-553-5101.

Fennessey Ranch Spring Nature Tour - March 11. Go on an old-fashioned hayride through our ranch. Enjoy spring wildflowers, migrating birds and you might catch a glimpse of a sun bathing alligator or a Russian boar. Great outdoor fun. 8-11 a.m., fees \$16.50 TCP members, \$18.59 non-members, reservations required, 361-529-6600.

HILL COUNTRY

Kerrville-Schreiner SP Cycles in Nature - March 18. Learn how mother nature switches from season to season and how wildlife responds. Call for more information, 830-257-5392.

PANHANDLE PLAINS

San Angelo SP Longhorn and Buffalo Seminar - Jan. 8; Feb. 26; March 18. Park naturalist will inform you about the history and other facts about the bison and longhorns in the park. 1-2:30 p.m., in addition to the park entry fee, the event fee is \$1 TCP members, \$2 non-members, \$1 children 12 and under, 915-949-4757.

Wildlife Call Demonstration - Jan. 8; Feb. 5. Park naturalist will demonstrate the finer arts of calling in wildlife. Meet at the South Shore entrance. 7-9 a.m. In addition to park entry fee the event fees are, \$1 TCP members, \$2 non-members, \$1 children 12 and under, reservations required, 915-949-4757.

PINEYWOODS

Martin Dies, Jr. SP Project Wild Activities - March 12. Resource oriented activities for the young and young at heart at the Hen House day use area between campsites 56 and 57. 3-4 p.m., 409-384-5231.

Alligator Etiquette - March 18. Join us at the amphitheater for a color slide presentation on alligators, their habits and activities. 7:30-8:30 p.m., 409-384-5231.

SOUTH TEXAS PLAINS

Chaparral WMA Youth Shooting Sports Event - March 21, 22, 23. An introduction to wildlife conservation, hunting, and the shooting sports. Aimed at area high school students. Event available only by invitation. 9 a.m.-4 p.m., 830-676-3413.

Hunts

GULF COAST

Fennessey Ranch Fennessey Ranch Trophy Deer Hunt - Jan. 1-16. Go on a 4-day guided white-tailed deer hunt. Lodging, meals and wild boar hunt included. This is the 11th year of scientific game management. Emphasis on buck/doe ratio and augmented with strategic use of food plots. Hunts start at daylight, fees \$3,450 per-person, reservations required, 361-529-6600.

Wild Boar Safari - Jan. 29; Feb. 19; March 4. Hunt Russian boar from an African style brush blind. Day hunt, bring your ice chest to take home your meat. 5:30 a.m.-dark, fees \$195 per-person, reservations required, 361-529-6600.



SCHEDULE YOUR OWN OUTINGS

PLEASE CALL THE PARKS OR WILDLIFE MANAGEMENT AREAS LISTED HERE FOR INFORMATION ABOUT FACILITIES, ACTIVITIES AND RESERVATIONS.

Atkinson Island

WMA Unvegetated beach areas. No facilities, accessible by boat only, 409-736-2551.

Big Bend Ranch SP Hiking, backpacking, and back country camping are available north of Highway 170. TCP or daily entrance fee is acceptable for both north and south of Highway 170. For information call Big Bend Ranch Complex office at 915-229-3416 from 8 a.m.-5 p.m.

Candy Cain Abshier

WMA Area primarily for birdwatching and nature study. No facilities, 409-736-2551.

Davis Mountains SP

Experience backcountry hiking in the Davis Mountains, 8- to 10-mile trail climbs to a spectacular overlook with a 360° panorama. TCP or \$5 activity fee per-person. Reservations not required, 915-426-3337.

Devils River SNA Choice of two tours given upon request by reservation only. Fee of \$10 per-person plus TCP is required of individuals 17 years and older. Tour A will include a visit to an archeological pictograph site and Indian shelter which will involve some hiking. Tour B is a scenic drive through Dolan Creek Canyon and a visit to the springs on the Devils River. Primitive camping available. Group barracks lodging for 10 people and dining hall facility available for rent. Call 830-395-2133 for tour reservations, 512-389-8900 for facility reservations.

Granger WMA Approximately 35 miles of trails criss-cross the Blackland Prairie accessible by entering at TPW registration boxes 1-7 around Granger Lake. Tall prairie grasses, fishing and birding (see if you can spot a ring-necked pheasant) await

the adventurous hiker and mountain biker. Pick up area maps at Corps of Engineers headquarters at the dam, 512-859-2668.

Gus Engeling WMA Two interpretive, walking nature trails and one driving wildlife demonstration tour are open throughout the year except during special permitted hunts, 903-928-2251.

Hill Country SNA Go on scenic trails on horseback at Hill Country SNA. Horses and lunch on the trail provided. Travel to historic Castroville to overnight at the rustic Landmark Inn SHP with dinner at the Alsatian Inn restaurant and continental breakfast at Landmark in the morning. Fee of \$175 for two persons, double occupancy, includes trail ride, dinner and accommodations. Reservations subject to availability of rooms and trail conditions, 830-796-4413; or trail riding only at Running 'R' Ranch, call for TCP member discounts on horseback rides, 830-796-3984.

Kickapoo Cavern SNA

Birdwatching and nature tours upon request. Primitive cavern tour by special arrangement. Groups encouraged, bunkhouse lodging for 14 people, and kitchen available. Please make reservations at least one week in advance. TCP required per-person (17 years or older) to enter park, 830-563-2342.

Lower Neches WMA/Bessie Heights Unit Accessible by boat only. No facilities, 409-736-2551.

Richland Creek WMA Six miles of driving and walking trails open except during special permitted hunts. Observe wading birds from shallow-water marsh compartments

on the 4,000-acre north unit between April and August. No facilities, 903-389-7080.

Walter Buck WMA Activities coordinated through South Llano River SP, 915-446-3994.

Welder Flats Coastal

Preserve This area is entirely submerged land, so access is by boat. ALL shoreline area is privately owned and is NOT part of the preserve. Please do not trespass on private land and do not disturb the whooping cranes, 361-576-0022

Outdoor Challenges, Skills & Adventures

BIG BEND COUNTRY

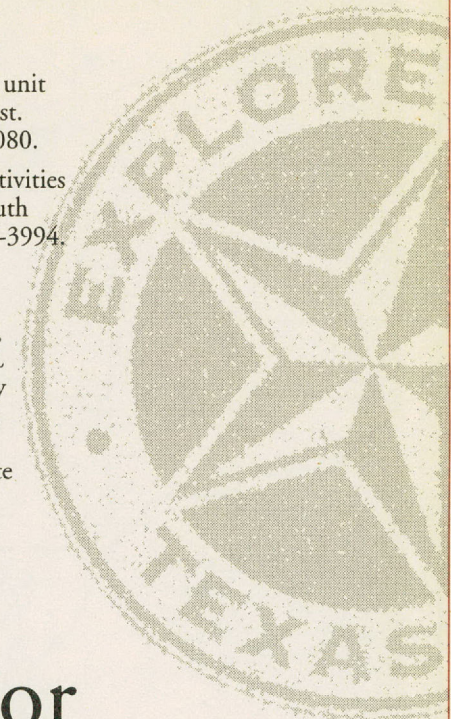
Barton Warnock Environmental Education Center Private Guide Training - Feb. 4-6. Mandatory 3-day training for guides and outfitters desiring to operate commercial trips or tours in the park. Includes tour, orientation, park regulations, and an overview of natural and cultural resources. For guides only. 8:30 a.m. on Feb. 4 till 7 p.m. on Feb. 6, fees \$50 per-person, reservations required, 915-229-3416 or 915-424-3327.

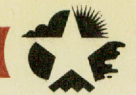
HILL COUNTRY

Colorado Bend SP Wild Cave Tours - Jan., Feb. & March. Every Saturday and Sunday. The crawling tour takes you through several relatively small

and progressively more difficult caves. The walking tour takes you to Gorman Cave. Start at 9:15 a.m. Saturdays and Sundays for the walking tours. 1:30 p.m. Saturday for the crawling tours, resources and weather permitting, fees \$10 per-person for walking tour and \$15 per-person for crawling tour, reservations required, 915-628-3240.

X Bar Ranch Spring Break at X Bar Ranch - March. Join us for hiking on the nature trails, horseback riding, mountain biking, birding, fun ranch excursions and more. Visit the Eldorado Woolen Mill, Texas Forts Trail and the Sonora Caverns. Lodging, camping and meals available. Call for dates, times and prices. Reservations required, 888-853-2688.

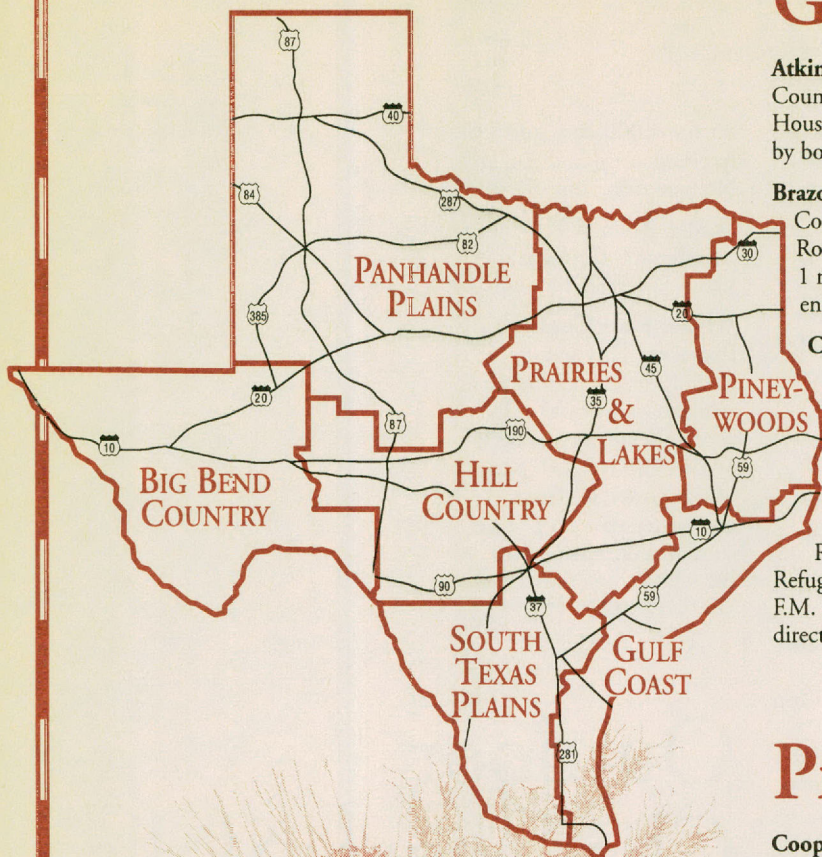




DRIVE ACROSS TEXAS

— TRAVEL DIRECTIONS TO PASSPORT PLACES

Gulf Coast



Atkinson Island WMA In Harris County, off Morgan's Point on the Houston Ship Channel; accessed by boat only, 409-736-2551.

Brazos Bend SP In Fort Bend County, 10 miles west of Rosharon on F.M. 1462 then 1 mile north on F.M. 762 to entrance, 409-553-5111.

Candy Cain Abshier WMA In Chambers County, approximately 23 miles south of Anahuac on F.M. 562, to Smith Point, 409-736-2551.

Fennessey Ranch In Refugio County, between Refugio and Bayside off F.M. 2678. For detailed directions call 361-529-6600.

Matagorda Island SP & WMA In Calhoun County, about 50 miles southeast of Victoria. Park headquarters, dock and information center at Port O'Connor, 361-983-2215.

San Jacinto Battleground SHP In Harris County, 22 miles east of downtown Houston off State Highway 225 east, then north on State Highway 134 to park entrance, 281-479-2431.

Welder Flats Coastal Preserve In Calhoun County, at the junction of the Victoria Barge Canal and the Gulf Intracoastal Waterway. Boat access only, 361-576-0022.

Prairies and Lakes

Cooper Lake SP & WMA/ South Sulphur Unit In Hopkins County, 12 miles north of Sulphur Springs on State Highway 154/19; turn west onto F.M. 71 for 5 miles, then north on F.M. 3505 to entrance, 903-945-5256.

Cooper Lake SP/Doctor's Creek Unit In Delta County, 2 miles south of Cooper, on the northern shore of Cooper Lake, on State Highway 154, turn west onto F.M. 1529 to entrance, 903-395-3100.

Fairfield Lake SP In Freestone County, 6 miles north of Fairfield off F.M. 488, then east on F.M. 2570 to Park Road 64 to entrance, 903-389-4514.

Fanthorp Inn SHP In Grimes County, 10 miles east of Navasota on State Highway 90 in the town of Anderson, 409-873-2633.

Fossil Rim Wildlife Center In Somervell County, 3 miles southwest of Glen Rose; go south on County Road 2008 for 2 miles to entrance, 254-897-2960.

Gus Engeling WMA In Anderson County, 21 miles northwest of Palestine on U.S. Highway 287 to entrance, 903-928-2251.

Monument Hill/Kreische Brewery SHP In Fayette County, 1 mile south of La Grange off U.S. Highway 77 to spur 92, to entrance, 409-968-5658.

Richland Creek WMA In Freestone and Navarro counties, about 28 miles east of Corsicana, along U.S. Highway 287 to entrance, 903-928-2251.

Stephen F. Austin SHP In Austin County, 3 miles east of Sealy off I.H.10, take exit F.M. 1458 north, go 2 miles, turn left on Park Road 38 to entrance, 409-885-3613.

Texas Freshwater Fisheries Center In Henderson County, 5 miles east of Athens, take State Highway 31 to F.M. 2495 next to Lake Athens, 903-676-2277.

Washington-on-the-Brazos SHP In Washington County, 21 miles northeast of Brenham on State Highway 105, then turn onto F.M. 912 to entrance, 409-878-2214.

Pineywoods

Caddoan Mounds SHP In Cherokee County, 6 miles southwest of Alto on State Highway 21 to entrance, 409-858-3218.

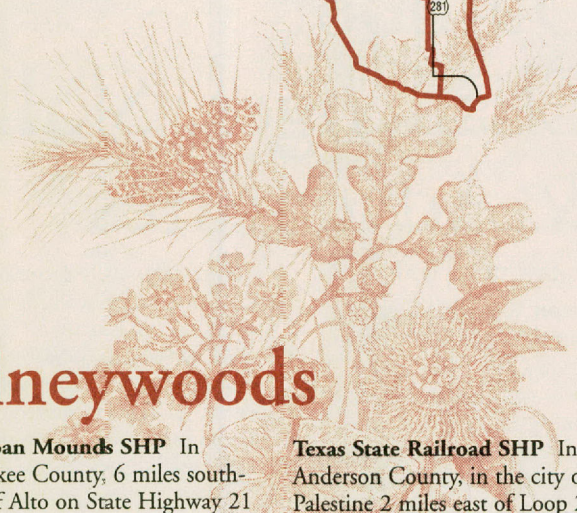
Martin Creek Lake SP In Rusk County, 3.5 miles southwest of Tatum, on State Highway 43 to County Road 2183 south to park entrance, 903-836-4336.

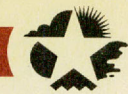
Martin Dies, Jr. SP In Jasper County, 17 miles east of Woodville on U.S. Highway 190 to entrance, 409-384-5231.

Rusk/Palestine SP In Anderson County, 4 miles east of Palestine on U.S. Highway 84 to entrance. In Cherokee County, 3 miles west of Rusk on U.S. Highway 84 to entrance, 903-683-5126.

Texas State Railroad SHP In Anderson County, in the city of Palestine 2 miles east of Loop 256 on U.S. Highway 84 to Palestine train station. In Cherokee County, 2 miles west of Rusk via U.S. Highway 84 to Rusk train station, 903-683-2561.

Village Creek SP In Hardin County, 10 miles north of Beaumont in the city of Lumberton. From U.S. Highway 69 north, take Mitchell Road exit to Village Creek Parkway and go approximately 2 miles, turn east onto Alma Drive to park entrance, 409-755-7322.





Hill Country

Colorado Bend SP In Lampasas and San Saba counties, on the Colorado River about 10 miles above Lake Buchanan, near the community of Bend. Bend is north of Llano via State Highway 16 or west of Lampasas via U.S. Highway 183/190. Paved access to Bend via Ranch Roads 501, 580 or 581. From Bend there are approximately 4 miles of unpaved road to the park entrance, 915-628-3240.

Fort McKavett SHP In Menard County, 23 miles west of Menard; take F.M. 190 west 17 miles to R.M. 864 south to park entrance, 915-396-2358.

Granger WMA In Williamson County, approximately 7 miles east of Granger on F.M. 971 to entrance, 512-859-2668.

Hill Country SNA In Bandera and Medina counties, 10 miles southwest of Bandera on State Highway 173 south to Ranch Road 1077 (also marked as "Dixie Dude Ranch Road"), to park entrance, 830-796-3984.

Kerrville-Schreiner SP In Kerr County, 3 miles southeast of Kerrville on State Highway 173 to entrance, 830-257-5392.

Kickapoo Cavern SP In Edwards and Kinney counties, 40 miles west of Uvalde on U.S. Highway 90, then 22.5 miles due north of Bracketville on Ranch Road 674; park entrance is on west side of road, 830-563-2342.

Longhorn Cavern SP In Burnet County, about 5 miles south of Burnet on U.S. Highway 281 to entrance, 512-756-4680.

Lyndon B. Johnson SHP In Gillespie County, 16 miles east of Fredericksburg on U.S. Highway 290 to park entrance, 830-644-2252.

Pedernales Falls SP In Blanco County, 9 miles east of Johnson City on F.M. 2766 to entrance, 830-868-7304.

Walter Buck WMA In Kimble County, on the south fork of the Llano River, approximately 3 miles south of Junction on State Highway 377 to entrance, 915-446-3994.

X Bar Ranch In Schleicher County, 20 miles southwest of Eldorado on F.M. 2129. Office is in Eldorado across from the courthouse on U.S. Highway 277, 915-853-2688.

Panhandle Plains

Alibates Flint Quarries Monument In Potter County, approximately 5 miles south of Fritch, turn west at Lake Meredith Recreational Area, 5-1/2 miles to the ranger station, 806-857-3151.

Caprock Canyons SP & Trailway In Briscoe County, 3 miles north of Quitaque. Take State Highway 86 to Quitaque, then take F.M. 1065 to the park, 806-455-1492.

Copper Breaks SP In Hardeman County, 12 miles south of Quanah or 11 miles north of Crowell on State Highway 6, to park entrance, 940-839-4331.

Lubbock Lake Landmark SHP In Lubbock County, in the city of Lubbock near the intersection of Loop 289 and Clovis Road (U.S. 84), 806-765-0737.

Palo Duro Canyon SP In Randall County, 12 miles east of Canyon on State Highway 217. From Amarillo, it is south on Ranch Road 1541 and then 8 miles east on State Highway 217, 806-488-2227.

San Angelo SP In Tom Green County, 1 mile west of San Angelo, on the O.C. Fisher Reservoir, via either U.S. Highway 87 or 67 to F.M. 2288 to park entrance, 915-949-4757.

Big Bend Country

Barton Warnock Environmental Education Center Located in Lajitas. Part of the Big Bend Ranch SP, 915-424-3327.

Big Bend Ranch SP In Brewster and Presidio counties, 4 miles southeast of Presidio on F.M. 170; entrance at Fort Leaton SHP, 915-229-3416.

Davis Mountains SP In Jeff Davis County, about 4 miles northwest of Fort Davis, via State Highway 118 to entrance, 915-426-3337.

Devils River SNA In Val Verde County, about 45 miles north of Del Rio and 22 miles off U.S. Highway 277 to entrance, 830-395-2133.

Fort Lancaster SHP In Crockett County, 8 miles east of Sheffield on U.S. Highway 290 to park entrance, 915-836-4391.

Fort Leaton SHP In Presidio County, 4 miles southeast of Presidio on the River Road to F.M. 170, to entrance, 915-229-3613.

Franklin Mountains SP In El Paso County, in the city of El Paso, west on I.H. 10, exit on the Canutillo/Transmountain Road exit, go east on Transmountain Road for 3.8 miles to park entrance, 915-566-6441.

Hueco Tanks SHP In El Paso County, approximately 32 miles east of El Paso, via U.S. Highway 62/180 north on Ranch Road 2775 to entrance, 915-857-1135.

Seminole Canyon SHP In Val Verde County, 9 miles west of Comstock on U.S. Highway 90 to entrance, 915-292-4464.

South Texas Plains

Bentsen-Rio Grande Valley SP In Hidalgo County, 3 miles south of Mission on F.M. 2062 to entrance, 956-585-1107 or 956-585-0902.

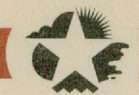
Chaparral WMA In La Salle and Dimmit counties, 8 miles west of Artesia Wells on F.M. 133 to entrance, 830-676-3413.

Fannin Battleground SHP In Goliad County, 9 miles east of Goliad on U.S. Highway 59 to entrance, 361-645-2020.

Institute of Texan Cultures In Bexar County, in the city of San Antonio, 801 S. Bowie St., 210-458-2300.

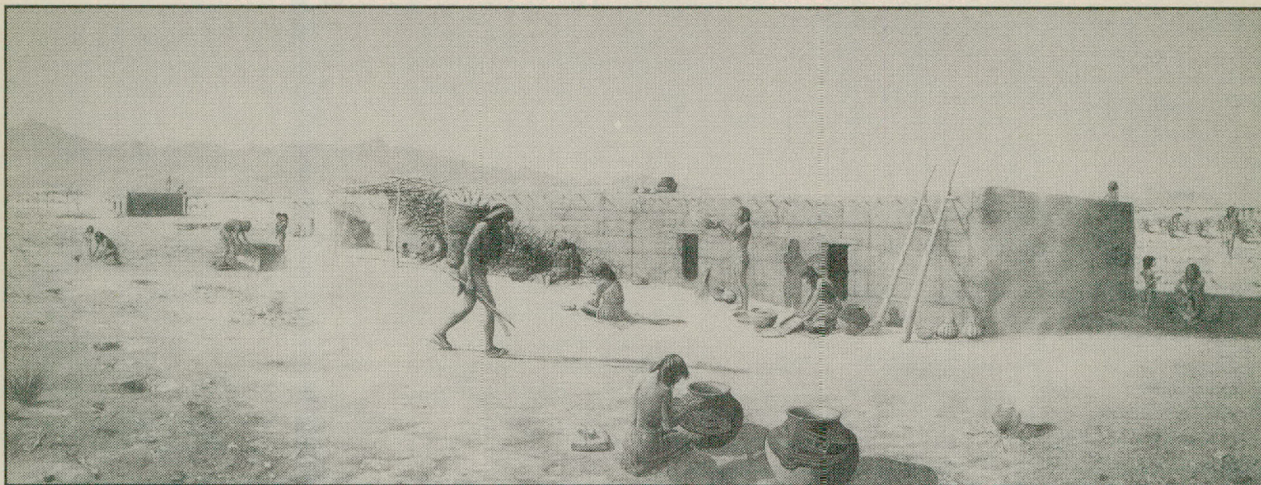
Abbreviations

SP = State Park
SFH = State Fish Hatchery
SHP = State Historical Park
SNA = State Natural Area
WMA = Wildlife Management Area
TCP = Texas Conservation Passport
TPW = Texas Parks & Wildlife



Artistic Impressions

Prehistoric Life in Texas

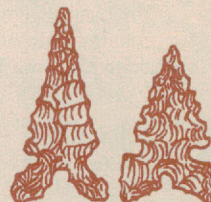


© GEORGE NELSON

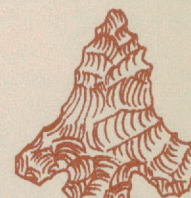
The Jornada branch of the Mogollon lived in the El Paso region which was something of a prehistoric cross roads for trading goods, ideas and technologies. Sherds of Jornada Brown or Middle Pecos Brown pottery types are found as far north as the Panhandle. Traders from the Panhandle may have acquired the pottery in exchange for Alibates flint which was highly valued for making stone tools. The image above is used courtesy of The University of Texas Institute of Texan Cultures at San Antonio.



Scallorn Point



Toyah Points



Catahoula Point

Compared to dart points, arrow points are small and thin. Arrow points first appear in the Late Prehistoric Period. They vary from region to region in Texas, and they also change shape over time. These are only four out of dozens of different types.

An encampment of The People in the Monahans area sand dunes ca. A.D. 1000. While the men butcher game from the hunt, the women are cooking in a pit lined with animal hides. They filled the hides with water and heated it by placing hot rocks inside. Jornada Brown, Plain Brownware and Middle Pecos Brown sherds found at Monahans paint a picture of an extensive network of contacts along the Pecos River and areas to the west. Visit the new exhibit at Monahans Sandhills SP.



© NOLA DAVIS



Late Prehistoric people on the High Plains grasslands ca. A.D. 1000. The woman is heating water inside a large brown pot placed directly on a low burning fire. The man is preparing flint projectile points for arrows. From the museum at Lubbock Lake Landmark SHP.



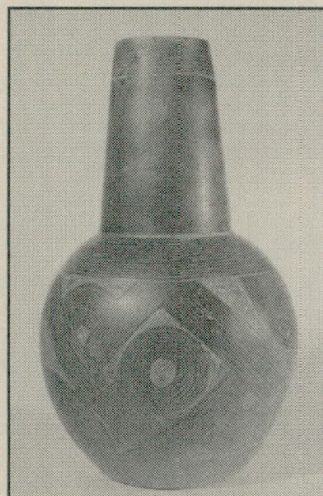
© NOLA DAVIS

Archeologists estimate from radiocarbon dates that Caddoan Mounds reached its peak population and influence about A.D. 1100. It is not yet possible to determine the population size, but the three mounds indicate there were enough people to provide the necessary construction force. Soil stains found within the mounds indicate that the soil was carried to and deposited on the mounds in 30 to 40 pound basket-loads. The image below is used courtesy of The University of Texas Institute of Texan Cultures at San Antonio.



© GEORGE NELSON

The Early Caddos brought the technology for making fine pottery with them when they settled in East Texas. Using locally abundant sources of clay, mixed with water and tempering material such as crushed bone, the Early Caddos created pottery by the common technique of "coiling." The potter rolled moist clay between the palms to produce thin strips, which were stacked, pinched and smoothed to the desired forms.



Read about the people who gave Texas its name in the Texas Parks & Wildlife publication, *Caddoan Mounds, Temples and Tombs of an Ancient People*. Available at Caddoan Mounds SP and reproduced on the Friends of Caddoan Mounds web page: <http://www.skiles.net/caddo/t&t/t-t.htm>



Hueco Tanks

A significant archeological resource in the El Paso area is preserved at Hueco Tanks SHP. Unfortunately there are times when the recreational use of a state park threatens to destroy archeological remains that have existed undisturbed for thousands of years. This has been the case at Hueco Tanks SHP, a park that protects highly significant Native American pictographs, archeological sites and natural resources. As a protective measure, the number of park visitors is limited to 210 at any one time, and crucial rock art locations can be seen only by small groups on guided tours. Entry fees are \$4 per person, TCP members receive a single free entry. Reservations are recommended.



© GARY DUFF

Cave Kiva at Hueco Tanks. This hidden shelter has clear stencil-like paintings. Unfortunately, in 1993, an irresponsible vandal painted his name (not shown) over the masks, causing Hueco Tanks to be put under greater protection. This photograph is from a booklet called Rock Paintings at Hueco Tanks and is available from the park store or from TPW Press (512) 912-7035.

Hueco Tanks SHP Rock Art Tour - Jan., Feb. & March.
Every weekend go on a tour of the park and view a select number of rock art sites. First tour starts at 10 a.m., second tour starts at 12 p.m., fees \$4 per-person, reservations available but not required, 915-857-1135.

Texas Conservation Passport Journal

January 2000 - March 2000
Vol. 9, No. 1

Texas Parks and Wildlife

To manage and conserve the natural and cultural resources of Texas for the use and enjoyment of present and future generations.

Governor of Texas
George W. Bush

Commission
Lee Bass, Chairman, Fort Worth
Carol Dinkins
Vice-Chair, Houston

Ernest Angelo, Jr., Midland
John Avila, Jr., Fort Worth
Richard (Dick) Heath, Dallas
Alvin L. Henry, Houston
Katharine Armstrong Idsal, Dallas
Nolan Ryan, Alvin
Mark E. Watson, Jr., San Antonio

Perry R. Bass, Chairman-Emeritus,
Fort Worth

Executive Director
Andrew Sansom

Communications Director
Lydia Saldaña

Journal

Emily Carter, Editor
Susan Schulte, Events Editor
Darcy Hamburg, Marketing Director

We want to hear from you!
Please send your comments,
complaints and suggestions to:

Texas Conservation Passport
4200 Smith School Road
Austin, TX 78744
FAX: 512-389-8029
e-mail: passport@tpwd.state.tx.us

Texas Conservation Passport Journal
(ISSN 10832823) (USPS 012968)

is published quarterly by Texas Parks and Wildlife,
4200 Smith School Road, Austin, TX 78744.
Both the \$50 and \$25 membership fees include
the \$4.95 annual cost of this publication.
Periodicals Postage Paid at Austin, TX.

**POSTMASTER:
Send address changes to
Texas Conservation Passport Journal
4200 Smith School Road
Austin, TX 78744**

© 2000 Texas Parks and Wildlife

Statement of Ownership, Management, and Circulation

1. Publication Title: **TEXAS CONSERVATION PASSPORT JOURNAL**

2. Publication Number: **10832823**

3. Filing Date: **10-1-1999**

4. Issue Frequency: **Quarterly**

5. Number of Issues Published Annually: **4**

6. Annual Subscription Price: **\$4.95**

7. Complete Mailing Address of Known Office of Publication (Street, city, county, state, and ZIP+4):
**Texas Parks and Wildlife
4200 Smith School Rd.
Austin TX 78744**

8. Complete Mailing Address of Headquarters or General Business Office of Publisher (Not printer):
**Texas Parks and Wildlife
4200 Smith School Rd.
Austin TX 78744**

9. Full Names and Complete Mailing Addresses of Publisher, Editor, and Managing Editor (Do not leave blank):
Publisher: **Texas Parks and Wildlife
4200 Smith School Rd.
Austin TX 78744**
Editor: **Emily Carter Texas Parks and Wildlife
4200 Smith School Rd.
Austin TX 78744**
Managing Editor: **Emily Carter Texas Parks and Wildlife
4200 Smith School Rd.
Austin TX 78744**

10. Owner (Do not leave blank. If the publication is owned by a corporation, give the name and address of the corporation immediately followed by the names and addresses of all stockholders owning or holding 1 percent or more of the total amount of stock. If not owned by a corporation, give the names and addresses of the individual owners. If owned by a partnership or other unincorporated firm, give its name and address as well as those of each individual owner. If the publication is published by a corporation or other organization, give its name and address.)

11. Known Bondholders, Mortgagees, and Other Security Holders Owning or Holding 1 Percent or More of Total Amount of Bonds, Mortgages, or Other Securities. If none, check box None

12. Tax Status (For completion by nonprofit organizations authorized to mail at nonprofit rates) (Check one)
 The purpose, function, and nonprofit status of this organization and the exempt status for federal income tax purposes:
 Has Not Changed During Preceding 12 Months
 Has Changed During Preceding 12 Months (Publisher must submit explanation of change with this statement)

PS Form 3526, September 1998 (See instructions on reverse)

13. Publication Title: **Texas Conservation Passport Journal**

14. Issue Date for Circulation Data Below: **October 1999 - December 1999**

15. Extent and Nature of Circulation

| Average No. Copies Each Issue During Preceding 12 Months | No. Copies of Single Issue Published Nearest to Filing Date |
|---|---|
| a. Total Number of Copies (Net press run) | 64,773 |
| b. Paid and/or Requested Circulation | 60,000 |
| (1) Paid/Requested Outside-County Mail Subscriptions (Based on Form 3541 - (Include advertiser's proof and exchange copies) | 49,268 |
| (2) Paid/Requested In-County Subscriptions (Include advertiser's proof and exchange copies) | 51,455 |
| (3) Sales Through Dealers and Carriers, Street Vendors, Counter Sales, and Other Non-USPS Paid Distribution | |
| (4) Other Classes Mailed Through the USPS | |
| c. Total Paid and/or Requested Circulation (Sum of 15b(1), (2), (3), and (4)) | 50,527 |
| d. Free Distribution (Sum of 15d(1) and (2)) | 53,410 |
| (1) Outside-County as Based on Form 3541 | 2,259 |
| (2) In-County as Based on Form 3541 | 1,955 |
| (3) Free Distribution Outside the Mail (Carriers or C.O.D.) | 12,546 |
| (4) Free Distribution Through the Mail (Carriers or C.O.D.) | 5,282 |
| (5) Total Free Distribution (Sum of 15d(1) and (2)) | 12,546 |
| (6) Total Free Distribution (Sum of 15d(3) and (4)) | 63,073 |
| e. Copies not Distributed | 1,701 |
| f. Total (Sum of 15c and 15e) | 64,773 |
| g. Total (Sum of 15c and 15e) | 64,773 |
| h. Copies not Distributed | 1,701 |
| i. Total (Sum of 15c and 15e) | 64,773 |
| j. Copies not Distributed | 1,701 |
| k. Total (Sum of 15c and 15e) | 64,773 |

16. Publication of Statement of Ownership: Publication required. Will be printed in the 10/1/1999 issue of the publication. Publication not required.

17. Signature and Title of Editor, Publisher, Business Manager, or Owner: **Emily Carter, Editor**

18. I certify that all information furnished on this form is true and complete. I understand that anyone who furnishes false or misleading information on this form or who omits material or information requested on the form may be subject to criminal sanctions (including fines and imprisonment) and/or civil sanctions (including civil penalties).

Instructions to Publishers

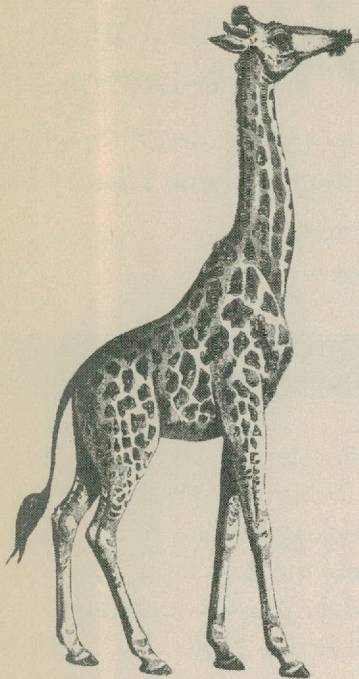
- Complete and file one copy of this form with your postmaster annually on or before December 1. Keep a copy of the completed form for your records.
- In cases where the stockholder or security holder is a trustee, include in items 10 and 11 the names of the trustee or corporation for whom the trustee is acting. Also include the names and addresses of individuals who are stockholders who own or hold 1 percent or more of the total amount of bonds, mortgages, or other securities of the publisher's corporation. In item 11, if none, check the box. Use blank sheets if more space is required.
- Be sure to furnish all circulation information called for in item 15. Free circulation must be shown in items 15d, e, and f.
- Item 15h, Copies not Distributed, must include (1) reprinted copies originally mailed on Form 3541, and returned to the publisher; (2) estimated returns from news agents; and (3) copies for office use, reference, spacer, and all other copies not distributed.
- If the publisher had periodic authorization as a general or requester publisher, this Statement of Ownership, Management, and Circulation must be published: it must be printed in any issue in October or, if the publication is not published during October, the last issue printed after October.
- In item 16, indicate the date of the issue in which this Statement of Ownership will be published.
- Item 17 must be signed.

Failure to file or publish a statement of ownership may lead to suspension of Periodicals authorization.

PS Form 3526, September 1998 (Rev. 9/98)



PASSPORT VALUES



Ruckers Refuge and Guesthouse Birdwatching, photography, stargazing, nature walks and enjoying nature at its best await TCP members (10 percent discount) in a new, unique and fully furnished hide-away house in the Davis Mts. near Ft. Davis and McDonald Observatory. Call Sid or Shirley for a brochure and more information at 915-426-3552.

Fossil Rim Wildlife Center TCP members qualify for discounts on admission to the Scenic Wildlife Drive. Enjoy a 9-mile drive among friendly giraffes, antelopes, zebras and

many other animals from around the world. Open year-round. Call 254-897-2960 for more information.

Longhorn Cavern State Park With each current TCP, you can purchase a Longhorn Cavern tour ticket for \$7, discounted from the regular \$8 price. For children age 5 through 12, the ticket price is \$4.50, and children age 4 and under are free. Call 512-756-6976 for recorded information on times and tours.

Running 'R' Ranch, Bandera Offers TCP members discounts on its horseback rides. When you take advantage of

this special offer, you'll have the opportunity to explore the Hill Country SNA during your ride. For more information, call 830-796-3984.

X Bar Ranch near San Angelo gives TCP members a 10 percent discount on lodging. Hike, go mountain biking, ride horses or relax at this working ranch. Lodging in private houses or cabins. Plenty of wildlife viewing and other activities. For reservations, information and directions call toll free 888-853-2688.

Web site: www.xbarranch.com
e-mail: xbar@compuserve.com

TEXAS PARKS AND WILDLIFE

At Your Service

SUBSCRIPTIONS

Texas Parks & Wildlife magazine offers a reduced rate of \$8 for one year to all TCP members. To subscribe at this special rate have your TCP member number handy and call 800-937-9393.

ON RADIO

Passport To Texas takes you on a 90-second radio journey into the Texas outdoors. Look for station listings: www.passporttotexas.com



Funded in part by The Dow Chemical Company and the Sport Fish & Wildlife Restoration Program in Texas.

ONLINE

Make state park reservations via our web site:

www.tpwd.state.tx.us

ON THE PHONE

Park reservations or cancellations

512-389-8900

Monday thru Friday 9 a.m.-8 p.m.

Saturday 9 a.m.-12 p.m.

Voice Mail: 24 hours a day

Indian Lodge 915-426-3254

Texas State Railroad 800-442-8951

Wildlife Management Areas call individual areas on a weekday, 8-9 a.m. and 12-1 p.m., to make sure you can have access. Each event listing includes the phone number.

TCP MEMBERSHIPS

A Gold Texas Conservation Passport is a \$50 annual membership with a vehicle pass good for 12 months from the month of purchase.

It gives you:

- Free entrance at parks where entrance fees are charged and one free tour every time you visit one of our historical parks. Parks charging both an entrance fee and an historical tour fee may offer either: free entrance or one free tour, but not both.
- Includes subscription to the quarterly *Texas Conservation Passport Journal*.
- Special access to restricted Wildlife Management and State Natural Areas and trips to private Texas ranches.

It's easy to join, ask for the Gold Texas Conservation Passport at:

- Your nearest Texas State Park
- Any Texas Parks and Wildlife regional law enforcement office

- Your nearest license retailer
- Call toll-free 800-895-4248, listen to the menu and press the extension for License Sales.

The Gold Texas Conservation Passport includes both a gold windshield decal and a paper license. The Gold decal is available **ONLY** at state parks.

- The gold windshield decal is your vehicle pass and must be permanently attached to the vehicle windshield in order to receive the free entrance benefit when entering Texas State Parks by vehicle.
- You must keep the paper license to show to the proper authorities (if necessary) when you enter Texas State Parks regardless of whether you enter in a vehicle or on foot, by bicycle, motorcycle, airplane or boat. It is your proof of purchase and not an entry permit.
- If you plan to use more than one vehicle or if you plan to use alternate means of transportation in addition to your vehicle, you will need duplicate gold windshield decals.

For member assistance and information, call 800-792-1112, listen to the menu and press the extension for Texas Conservation Passport.



Join an Archeological Society

Archeological societies across Texas bring individuals together who support our rich cultural heritage. The societies are generally composed of professional and amateur archeologists. Members take a hands-on approach to the scientific study of material culture found in both prehistoric and historic sites. These groups actively promote the preservation and conservation of cultural resources and actively discourage relic collecting, unscientific digging, and illegal importation and commercial trade in archeological materials.

The generic term for such illegal activities is "pot holing." When artifacts are removed from a site willy-nilly, all that remains are the holes. Scientific archeology can frequently work wonders at interpreting debris found around human habitation sites – hearths, flaked stone, bone tools and more – but if the site has been pot holed the information is lost.

For this reason: Texas State Law makes it unlawful for anyone to disturb in any way any historic or prehistoric, archeological or paleontological site or any historic marker, situated on lands owned or controlled by the State of Texas.

Carefully controlled archeological excavations retrieve artifacts, details of soil structure, bits of plants and bones from meals among other items. The analyzed data helps reconstruct an extinct lifeway with information about the foods that were eaten, farming practices, changes in stone tool technology, housing types and much more.

To join archeologists in pursuit of preservation, contact one of these societies. There are several societies not listed here, so please contact the Texas Archeological Society for more information.

Texas Archeological Society
The Center for Archaeological Research
U.T.S.A, 6900 N. Loop 1604 West,
San Antonio, Texas 78249-0658
<http://www.txarch.org/>

Big Bend Archeological Society
P.O. Box 1
Big Bend National Park, TX 79834
<http://www.brooksdata.net/personal/bbarch/default.htm>

El Paso Archaeological Society
A nonprofit Organization founded in 1922
P.O. Box 4345
El Paso, Texas 79914
(915) 751-3295
<http://www.epas.com/index.htm>

Northeast Texas Archeological Society
P.O. Box 239
Marshall, Texas 75671
<http://www.skiles.net/netas/netas.htm>



Washington-on-the-Brazos SHP

Celebrates the Grand Opening of **Barrington Living History Farm**

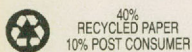
March 4-5

see page 4

TEXAS PARKS AND WILDLIFE

| | |
|---------------------------------|-------|
| The People | 1 |
| Late Prehistoric Period | 2 |
| Archeology in State Parks | 3 |
| Explore the Real Texas | 4-9 |
| Schedule Your Own Outings | 9 |
| Drive Across Texas | 10-11 |
| Artistic Impressions - | |
| Prehistoric Life in Texas | 12-13 |
| Hueco Tanks | 14 |
| Passport Values | 15 |
| At Your Service | 15 |

TEXAS
CONSERVATION
PASSPORT
JOURNAL
4200 Smith School Road
Austin, TX 78744



Dispersal of the publication conforms with Texas State Documents Depository Law, and it is available at Texas State Publications Clearinghouse and/or Texas Depository Libraries.

PWD BR C2000-144 (1/2000)