

P400.6
P268
2000/7-9



TEXAS CONSERVATION PASSPORT

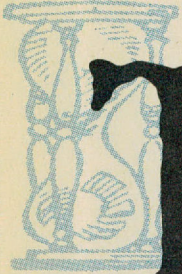
JOURNAL

Volume 9, Number 3 · Your pass to state parks and more. · July 2000 - September 2000

Government Publications
Texas State Documents

FEB 25 2002

Depository
Dallas Public Library



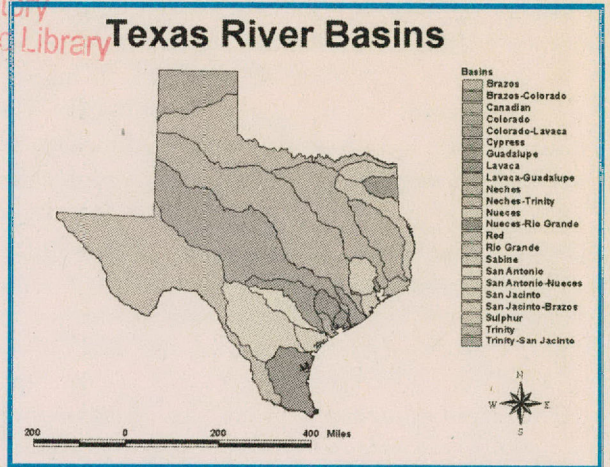
Texas Water

It takes thousands of years for water erosion to carve out distinct river basins, so when the European calendar flipped over to A.D. 1000, the major waterways of Texas already existed. Changes that do occur in just one thousand years are largely due to constantly flowing water constantly eroding river banks and thus, altering the river's primary channel. The most extreme changes are the result of human engineering in just the past 100 years.

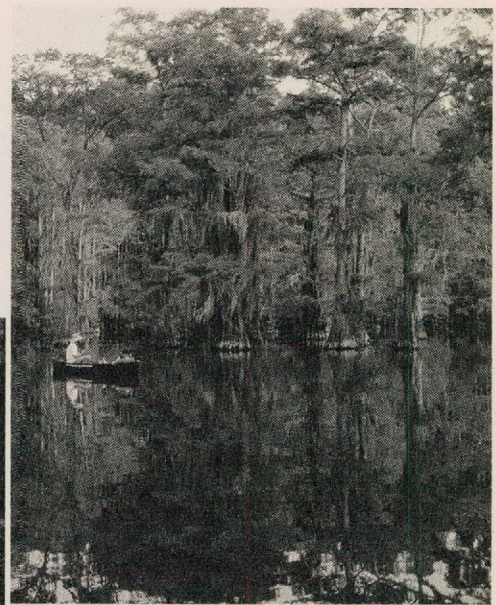
Texas has had the current drought/flood climatic regime for much longer than one millennium. When the rain returns it falls on drought-cracked soil and at first just runs off to parched stream beds. With a prolonged downpour the soil becomes so saturated it can no longer hold water which again runs off, and flash floods result. These torrential floods scour the riverbeds of western and Hill Country streams carrying dead limbs downstream toward the Gulf. East Texas rivers don't experience the same quality of flash floods, but they rise with lethal force carrying dead trees, limbs and forest debris downstream.

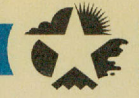
Europeans, exploring Texas midway through the last millennium, found a number of natural log rafts that resulted from such flood debris. Before they were dynamited, the rafts actually blocked river passage in places.

Caddo Lake was the only natural lake in Texas. A mass of driftwood and trees known as the Great Raft of the Red River obscured the channel above Shreveport, La., for 75 miles and acted like a dam. The raft was successfully removed in 1874, the lake slowly drained away leaving a swamp until a modern dam was built recreating the lake.



For Texas Water details check our Web site at:
www.tpwd.state.tx.us





WIND BENEATH OUR WINGS



STATE PARKS DIVISION

Paul Kisel

Park Manager, Inks Lake State Park

"I studied Forestry with an emphasis on Outdoor Recreation Management at Stephen F. Austin State University, and started working at Mission Tejas SHP in 1983," Paul said. By 1984 he was managing the undeveloped Lake Houston SP. "It was fantastic, I was a newly graduated forestry major with 4,700 acres of forest to manage."

"I also helped at Brazos Bend, Sheldon Lake, Galveston Island, Huntsville, San Jacinto Battleground, and the Battleship Texas. I was on the crew preparing the ship for its trip to dry dock in 1986," he said. "The best thing about this job is the wide diversity of the work and the opportunity to interact with the people who come out to the parks."

In 1995, after six years as Assistant Manager, Paul became the Manager at Inks Lake SP. "We have 228 campsites in this park from primitive sites to RV sites with hook-ups, and the weekends are busy."

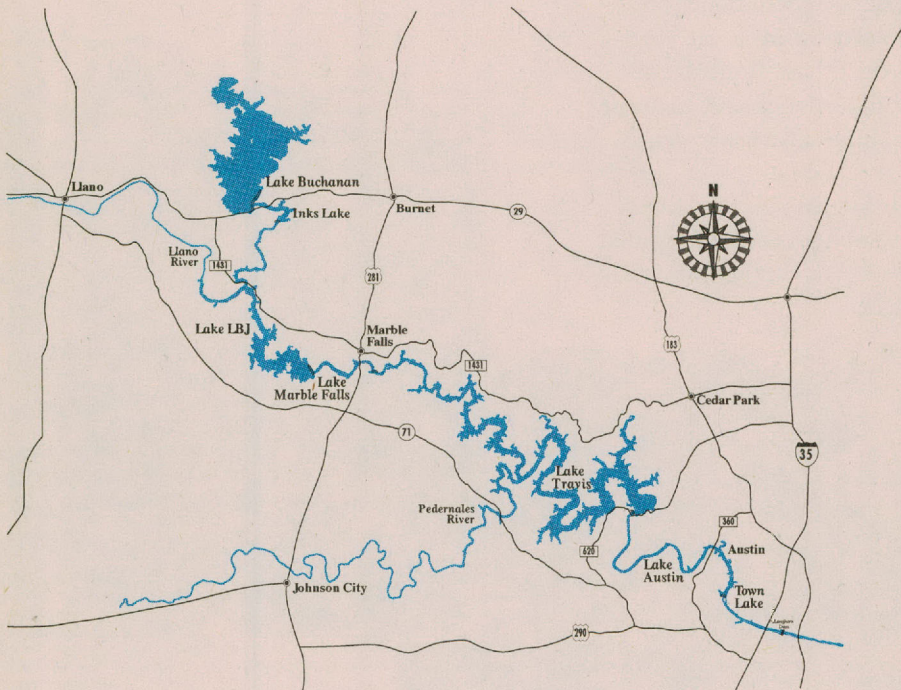
On Thursdays when the park is not at peak capacity, Paul and other park staff lead canoe tours on the lake. "It's an opportunity to see the resources from a different point-of-view. We explore geology in the Devil's Waterhole, look at a rookery for great blue heron, check the wood duck boxes and see white-tailed deer," he said.

Inks Lake

As early as the 1880s, Texans built dams to capture water, generate electricity and stop flooding.

But sadly, many dams washed away in floods. During the 1930s Great Depression, dam building efforts finally succeeded. Inks Lake, one of the seven Highland Lakes on the Colorado River, works in conjunction with the other lakes.

Other lakes in the chain, performing the duty of collecting flood water have fluctuating lake levels. But, Buchanan Dam above Inks provides a steady flow into the lake and the Inks Dam provides a steady release to Lake LBJ — this keeps Inks Lake at a relatively constant level. For these reasons, Inks Lake has good inflows and good water quality and is barely affected by drought.



The Chain of Highland Lakes on the Colorado River

Historically the Colorado River gave Texans major headaches. Its slow-moving current near the Gulf caused a vast log jam or "raft" to grow upstream blocking navigation for all but 10 miles above its mouth. In the mid-1800s, the raft was dynamited, but the channel soon filled up again. In the 1900s, the river's propensity to monstrous flash floods in the Hill Country blocked settlement along its banks. Today, dams have tamed its flow and created the seven Highland Lakes. These lakes provide flood control, municipal water and recreation, while the dams generate electricity. It's a mostly happy ending, but Texans still witness wild floods on the capricious Colorado River.

The Water

WATER BASED RECREATION IN STATE PARKS

Texas state parks offer terrific water based recreation on man made lakes, along free flowing rivers, at the site of ancient springs that still flow and on the Gulf shores.

BARRIER ISLAND PARKS

Wade in the surf, camp on the beach, crab in a bay or go out for salt water fishing at these great coastal parks: Sea Rim, Galveston Island, Matagorda Island, Mustang Island, Goose Island and Boca Chica as well as the Copano Bay state fishing pier.

SPRINGS

Nine major and 20 minor aquifers provide underground water storage in Texas. At the places where river down cutting has exposed a layer of water-bearing rock, the water spurts out as a spring. State parks based at historic springs include: Balmorhea, Big Spring, Gorman Falls at Colorado Bend and Lubbock Lake.

CREEKS and RIVERS

An excuse to get wet — that's the beauty of our many parks on flowing water: Blanco River, Brazos Bend, Caprock Canyon, Dinosaur Valley, Garner, Guadalupe River, Honey Creek, Kerrville-Shriner, Landmark Inn, McKinney Falls, Mother Neff, Palmetto, Palo Duro Canyon, Peder-nales Falls, Pur-tis Creek, South Llano River and Village Creek state parks.

LAKES

Where Texas once had only a single lake, Caddo Lake, it now has nearly 6,000 lakes. There are state parks on many of them; here is a partial list: Caddo Lake, Cedar Hill, Choke Canyon, Cleburne, Cooper Lake, Copper Breaks, Daingerfield, Eisenhower, Fairfield Lake, Falcon, Huntsville, Inks Lake, Lake Arrowhead, Lake Bob Sandlin, Lake Brownwood, Lake Casa Blanca, Lake Colorado City, Lake Corpus Christi, Lake Houston, Lake Livingston, Lake Mineral Wells, Lake Rita Blanca, Lake Somerville, Lake Texana, Lake Whitney, Martin Creek Lake, Martin Dies, Jr., Meridian, Mission Tejas, Possum Kingdom, Ray Roberts Lake, San Angelo, Seminole Canyon, Sheldon Lake, Tyler.

Canoe Trips

HILL COUNTRY

Inks Lake SP Full Moon Paddle to Devil's Waterhole - July 16. Canoe by the light of the full moon as you view the nocturnal wildlife and nighttime activities of others. 9-11 p.m., fees \$5 TCP members, \$6 non-members, \$5 senior citizens and children 12 and under, reservations available but not required, 512-793-2223.

Devil's Waterhole Canoe Tour - July 6, 13, 20, 27; Aug. 10, 24; Sept. 14, 28. Take a guided canoe tour and explore the geological and natural features of Inks Lake with an emphasis on local birds. 4-6 p.m., fees \$5 TCP members, \$6 non-members, \$5 children 12 and under, reservations available but not required, 512-793-2223.

PINEYWOODS

Martin Dies, Jr. SP Floating the Forks - July 15; Aug. 19; Sept. 16. Go on a half-day guided canoe trip on the Angelina and Neches Rivers. Paddle through the Angelina/Neches/Dam B WMA from historic Bevilport to the Walnut Ridge Unit of the park. 8 a.m.-2 p.m., fees \$20 if you bring your own canoe, \$25 if we provide the canoe, third person in canoe \$7.50, \$5 children 12 and under as third in canoe, reservations required, 409-384-5231.



*Inks Lake
Devil's Waterhole Canoe Tour*



EXPLORE THE REAL TEXAS



Celebrations

HILL COUNTRY

Lyndon B. Johnson SHP
LBJ's Birthday - Aug. 27. Join us as we celebrate the late President Johnson's birthday. Free bus tours operated by the National Park Service. Wreath-laying ceremony at the cemetery with the Johnson family in attendance. 10 a.m.-4 p.m., 830-644-2252.

PANHANDLE PLAINS

Palo Duro Canyon SP
Worship Service - July & Aug. The sky is our ceiling and the four corners of the earth are our walls. Come to an all-faith worship service at Palo Duro

Canyon on Sunday mornings. Meet at the Cottonwood Day use area. In case of bad weather meet at the Old West horse stables. Starts at 9 a.m., 806-488-2227.

Hands on History

HILL COUNTRY

Landmark Inn SHP Mill
Tour - July 9. A rare chance to actually climb down through an airshaft to see our 1854 millrace. Wear rubber sole shoes and clothes that can get wet. 2 p.m., fees \$1 TCP members, \$2 non-members, 830-931-2133.

PRAIRIES AND LAKES

Ray Roberts Lake SP/ Johnson Branch Unit
Jones Farm Jam - Sept. 16. Join us for lots of music, storytelling, Dutch oven cooking, quilting and many more activities dating to the 1880s era. 10 a.m.-5 p.m., 940-637-2294.

Washington-on-the-Brazos SHP Cotton Harvest - Sept. 23-24. Join us for a "cotton pickin' good time" as we celebrate the cotton harvest and see how this staple goes from field to fashion. 9 a.m.-4:30 p.m., fees \$4 adults, \$2 children 12 and under, 936-878-2213.

Shucking Bee - Aug. 27-28. Work with friends and neighbors to bring in the new corn crop. Celebrate the first of the fall harvest with games, crafts and good fellowship. 9 a.m.-4:30 p.m., fees \$4 adults, \$2 children 12 and under, 936-878-2213.

Kids' Corner

PANHANDLE PLAINS

Palo Duro Canyon SP Palo Duro Canyon Pioneers - July; Aug. & Sept. Children of all ages are invited to join us every Saturday for an hour of adventure and learning. Each week we will feature a different activity, game or project. 2-3 p.m., 806-488-2227.

PINEYWOODS

Martin Creek Lake SP 11th Annual Martin Creek Lake Perch Jerk - Sept. 2. Kids fishing event open to kids up to 15. Registration begins at noon. 2-3 p.m., 903-836-4336.

PRAIRIES AND LAKES

Texas Freshwater Fisheries Center CampFish Aquatic Camp - June 20-July 28. Summer camp for ages 9-15 and will include fishing, habitat conservation, diving, hunter and boater safety activities. 1-4 p.m., \$30 per 4-day session Tuesday thru Friday or \$80 for the summer session, call for reservations, 903-676-2277.

Washington-on-the-Brazos SHP Junior Ranger Camp - July 12-14, 19-21, 26-28. Barrington Living History Farm offers an out-of-the-ordinary camp experience. Learn about farm life in the 1850s Texas, discover how to survive in the wilds and learn about early Texas naturalists and their explorations. 9 a.m.-noon, fees \$5 per day, reservations required, 936-878-2214 ext. 227.

Campfire Gatherings

HILL COUNTRY

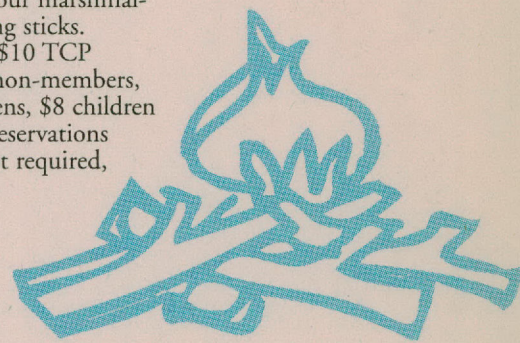
X Bar Ranch X Bar Dinner Series - Aug. 11. Join us for an evening of campfire cooking, cowboy stories, poetry and humor. 7 p.m., reservations required, 888-853-2688.

PANHANDLE PLAINS

Caprock Canyons SP & Trailway Campfire Gathering - Sept. 3. Join us for an evening of cowboy entertainment and history. Bring your marshmallows and roasting sticks. 7:30 p.m., fees \$10 TCP members, \$15 non-members, \$12 senior citizens, \$8 children 12 and under, reservations available but not required, 806-455-1492.

PRAIRIES AND LAKES

Lake Mineral Wells SP & Trailway Cowboy Campfire Music and Poetry - July 15; Aug. 5; Sept. 16. Enjoy a peaceful evening of cowboy music, poetry, and stories around a campfire. Learn and experience the cow camp lifestyle through the poetry of old-time cowboys. Bring a lawn chair. 8-10 p.m., 940-328-1171.





Special Event

PANHANDLE PLAINS

Copper Breaks SP Quahedi Society Quarterly Meeting Aug. 19. Quarterly friends group meeting. Come get involved in your parks. 6:30-7:30 p.m., 940-839-4331.

Living History

BIG BEND COUNTRY

Fort Lancaster SHP Living History Days - Sept. 29-30. Uniformed reenactors, the Texas Camel Corps and period musicians will bring the fort to life for a Star Party on Friday night. Bar-B-Q will be served at noon on Saturday. 7-9:30 p.m. Friday, 8 a.m.-5 p.m. Saturday, 915-836-4391.

GULF COAST

Sabine Pass Battleground SHP Dick Dowling Days - Sept. 9, 10. Watch a reenactment of the battle of Sabine Pass. There will be a parade, living history exhibits, artillery demonstration and a memorial service. 10 a.m.-5 p.m. on Sept. 9 and 1-3 p.m. on Sept. 10, fees \$5 per-vehicle, 409-971-2559.



PRAIRIES AND LAKES

Fanthorp Inn SHP Texian Days - Sept. 23. Annual historical celebration with the Texas Army encampment, stagecoach rides, chuck wagon cooking, cowboy poet, blacksmith and much more. 10 a.m.-5 p.m., fees \$4 adults, \$2.50 children 12 and under, 936-873-2633.

Heart of Texas Heritage

BIG BEND COUNTRY

Magoffin Home SHP Stories Of Spirit - July 8; Aug. 12; Sept. 9. Historical tour includes stories of spirits and odd events at the home and how they relate to the Magoffin family. 10-11:30 a.m., \$3 adults, \$1 senior citizens and children 12 and under, reservations available but not required, 915-533-5147.

GULF COAST

Varner-Hogg Plantation SHP The Showing of the Quilts - Sept. 1-30. A collection of antique quilts that Miss Ima Hogg collected will be displayed throughout the plantation home museum. The quilts date from the 1790s to 1930s. 9 a.m.-4 p.m. Wednesday thru Saturday, 1-4 p.m. Sunday, TCP members free, \$4 non-members, \$4 senior citizens, \$2 children 12 and under, 979-345-4656.

PRAIRIES AND LAKES

Fanthorp Inn SHP Guided Tours - July; Aug. & Sept. Every weekend. Discover how life was lived in 1850s Texas. 10 a.m.-4 p.m., 936-873-2633.

Monument Hill & Kreische Brewery SHP Kreische House Tour - July 9; Aug. 6, 13; Sept. 3, 10. Take a guided tour, by a trained docent, of the 1850s 3-story home of master stonemason H. L. Kreische. Learn the interesting family history of this German immigrant and see his architectural accomplishments and his craftsmanship in the home he built for his family. 1:30-4 p.m., fees free to TCP members, \$2 non-members, \$1 students, free to children 4 and under. 979-968-5658.

Historic and Scenic Tour - July; Aug. & Sept. Hear stories of Texas heroes at Monument Hill while enjoying the breathtaking view of La Grange and the Colorado River from the bluff. View the ruins of the Kreische Brewery and the Kreische Homestead. Fees, \$3.50 per-person, available by reservation only to groups of ten or more, 979-968-5658.

Kreische Brewery Tours - July; Aug. & Sept. Every Saturday and Sunday take a guided, walking tour with a trained docent through the ruins of one of the first breweries in Texas. Learn how German immigrant, Heinrich Kreische, built and operated his 19th century brewery. 2-3 p.m., fees free to TCP members, \$2 non-members, \$1 children 12 and under, reservations available but not required, 979-968-5658.

Washington-on-the-Brazos SHP Independence Hall Tours - July 8-11, 15-18, 22-31; Daily, Aug. & Sept. Tour the historic townsite of Washington and visit Independence Hall. Discover the exciting events that took place in March of 1836 as Texans declared independence! 10 a.m.-3 p.m., fees \$4 adults, \$2 children 12 and under, 936-878-2214.

Abbreviations

SP = State Park
SFH = State Fish Hatchery
SHP = State Historical Park
SNA = State Natural Area
WMA = Wildlife Management Area
TCP = Texas Conservation Passport
TPW = Texas Parks & Wildlife



Birds

BIG BEND COUNTRY

Balmorhea SP Birding Tour - July; Aug. & Sept. Every Saturday. Tour Phantom Cave Springs four miles west of the park to view birds of the Chihuahuah Desert and then the birds of San Solomon Cienega at the park. 8:30-10:30 a.m., fees \$5 per-person, reservations required, 915-375-2370.

Davis Mountains SP Bird Banding - Aug. & Sept. Every Tuesday, Thursday & Saturday. Learn to identify and band birds caught in mist nets. 8-11 a.m., fee \$3 per-person, 915-426-3337.

Third Annual Davis Mountains Hummingbird Roundup - July 27-30. Birdbanding at the park. Other roundup events around Fort Davis. For more information, call the Fort Davis Chamber of Commerce at 915-426-3015. Park phone: 915-426-3337.

GULF COAST

Fennessey Ranch Hawk Watch - Sept. 23, 30. The Mission River is a major migration route for hawks. Last year we sighted 14 species of hawks, which included the American swallow-tailed kite, white-tailed kite, falcons, merlins and white tail hawks. All day trips include lunch, and are guided by an experienced birder. Expect to count several thousand. 7:30 a.m.-3 p.m., fees \$42 TCP members, \$44.53 non-members, reservations required, 361-529-6600.

Hummingbird Hayride Tours - Sept. 15, 16, 17. The Mission River has been a major migration path for hummingbirds for centuries. This annual trip allows you to witness the tiny birds feeding on native wildflowers along the banks of the Mission River. An added bonus is a side trip to see wood storks and shore birds. 7:30-10:30 a.m. & 4:30-7:30 p.m. on Sept. 15 & 16, fees \$16 TCP members, \$18.59 non-members, reservations required, 361-529-6600.

HILL COUNTRY

Inks Lake SP Introduction to Birdwatching for Kids - July 18. Aided by binoculars and bird books (provided), hike to view area birds. For kids 12-18. 10 a.m.-4 p.m., fees \$3, reservations available but not required, 512-793-2223.

Kerrville-Schreiner SP Birdwatching 101 - July 22. Discover the joy of birdwatching even if you are a beginner. Join us for a bird identification walk as we look for various species. 9-10:30 a.m., 830-257-5392.

Birds of the Texas Hill Country - July 22. Join photographer Vernon Grove for an evening of viewing beautiful slides of some of the unique birds found in this area. 8:30-9:30 p.m., 830-257-5392.

PANHANDLE PLAINS

Caprock Canyons SP & Trailway Birding 101 - July 15, 29; Aug. 12, 26; Sept. 9, 23. Join us for a short lesson about how to identify birds; then test your skills. Bring your binoculars and bird book. 7:30 a.m. 806-455-1492.



Bats

HILL COUNTRY

Kerrville-Schreiner SP Bats - What You Don't Know Can Hurt Them - July 8. People are discovering that bats are really a very important part of our ecosystem, but ignorance has played a major role in their demise in many areas. Come learn the facts about these fascinating creatures. 8:30-10 p.m., 830-257-5392.

Old Tunnel WMA Old Tunnel Bat Emergence Tour - July; Aug. & Sept. Every Thursday & Saturday. Bat emergence observation with interpretation. First come first served. Approximately one hour prior to sunset, fees free to TCP members, \$5 non-members, \$3 senior citizens, \$2 children 6-16, free to children 5 and under, 830-644-2478.

PANHANDLE PLAINS

Caprock Canyons SP & Trailway Clarity Tunnel Adventure - July 15; Aug. 12; Sept. 9. Travel in an open-air vehicle for the evening bat flight. Learn area history along the way. 7 p.m., fees \$10 TCP members, \$15 non-members, \$12 senior citizens, \$8 children 12 and under, reservations required, 806-455-1492.

PRAIRIES AND LAKES

Cedar Hill SP Going Batty - July 30; Aug. 27. Ever wonder why bats hang upside down, or which is the smallest bat? Join us for a close encounter with a bat and find the answer to these questions and more. 8-9 a.m., 972-291-6641.

Outdoor Challenges, Skills & Adventures

BIG BEND COUNTRY

Big Bend Ranch SP On the Trail of Echols - Big Bend Camel Treks - Sept. 2-3, 4-5, 7-8, 9-10. Ride with us through part of the area covered by Lt. William Echols' 1860 Big Bend expedition. The two-day camel treks with the Texas Camel Corps include camels, guides, meals and camping. 8 a.m.-5 p.m., fees \$650 adults, \$325 children 12 and under, reservations required, 254-675-4867.





Nose to Nose With Nature

HILL COUNTRY

Inks Lake SP Fish Seining - July 8, 15, 22, 29; Aug. 12, 19, 26; Sept. 2. Discover what swims beneath the surface of the lake. A hands-on activity that allows participants an up-close look at the lake's fish. 3-4 p.m., 512-793-2223.

Kerrville-Schreiner SP Edible Insects - July 8. Learn basic characteristics of insects while creating one you can eat. Take a close-up look at some real insects. 9-10:30 a.m., 830-257-5392.

Aquatic Critters of the Guadalupe River - July 15. Come take a look at what is living in the Guadalupe River. A hand lens and microscope will be used to help see some of the river's smallest inhabitants. 9-10:30 a.m., 830-257-5392.

PANHANDLE PLAINS

San Angelo SP Llama Treks - July; Aug. & Sept. Hike and picnic in the park with a llama to carry your equipment and lunch. Length of hike is adjustable on moderate terrain. Half or all day, fees \$35-50 adults, group rates available, by reservation only, Jordan Llamas 915-651-7346.

PRAIRIES AND LAKES

Cooper Lake SP/South Sulphur Unit Bug Safari - July 15. Hike trails and fields in search of these interesting creatures that outnumber humans by more than 300,000 to 1. 2-3 p.m., reservations available but not required, 903-945-5256.



Cedar Hill SP Something's Fishy Here - July 16; Aug. 13. See and touch dragonfly larvae, water scorpions, snails and other creatures that live in our lakes, ponds and rivers. 8-9 a.m., 972-291-6641.

Reptile Rap - Aug. 20. Join us for a closer look at some of the park's cool reptiles. 8-9 p.m., 972-291-6641.

Animal Encounters - Aug. 5. Come meet and learn about Little Bit, the opossum and Speedy, the ornate box turtle and more of their cold-blooded friends. 8-9 p.m., 972-291-6641.



Longhorn and Bison

PANHANDLE PLAINS

Caprock Canyons SP & Trailway Bison, Bison, Bison! - July 22. Learn about the state bison herd from a wildlife biologist by touching a hide, examining a skull and asking questions. 8-9 p.m., reservations available but not required, 806-455-1492.

San Angelo SP Longhorn and Buffalo Seminar - July 22; Aug. 12; Sept. 16. Park naturalist will inform you about the history and other facts about the bison and longhorns in the park. 9-10:30 a.m., in addition to the park entry fee, the event fee is \$1 TCP members, \$2 non-members, \$1 children 12 and under, 915-949-4757.

Competitions

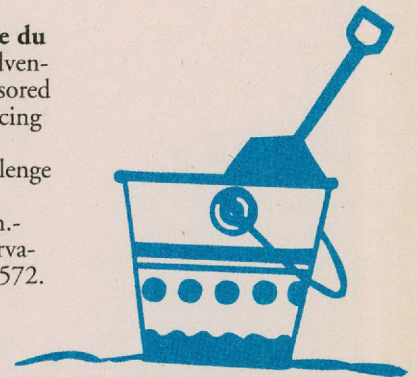
PANHANDLE PLAINS

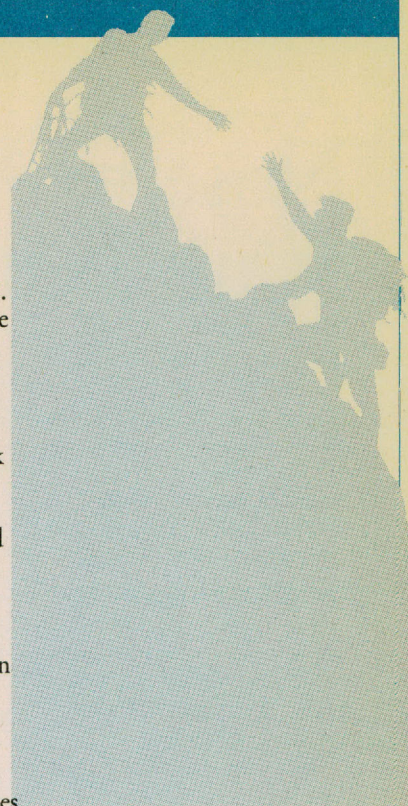
Fort Richardson SHP 8th Annual Hoof-N-Hair Bar-B-Q Cookoff - Aug. 11-12. Brisket, spare ribs, chicken & jackpot beans. Qualify for national cookoff. North Texas Area Bar-B-Q Cooker Association rules will apply. 100 percent payback. 5 p.m. Aug. 11-3 p.m. Aug. 12, 940-567-3506.

Cooper Lake SP/South Sulphur Unit Sandcastle Building Contest - July 4. Bring your buckets and imagination, and build your own sandcastle. Prizes will be awarded to the winners. 1 p.m., reservations available but not required, 903-395-3100.

PRAIRIES AND LAKES

Ray Roberts Lake SP/Isle du Bois Unit 2nd Annual Adventure Race - Aug. 19. Sponsored by the U.S. Adventure Racing Association. The race is a two-person teamwork challenge that combines canoeing, running and biking. 9 a.m.-noon, fee \$55 adults, reservations required, 713-532-5572.





Hikes, Walks & Runs

BIG BEND COUNTRY

Franklin Mountains SP

Interpretive Tour - July 15, 16; Aug. 5, 6, 19, 20; Sept. 2, 3, 16, 17. Participants will take guided tours through the Schaffer Shuffle & Cottonwood Springs trails. 8:30-10 a.m., fees \$2 TCP members, \$4 non-members, reservations required, 915-566-6441.

HILL COUNTRY

Colorado Bend SP Gorman Falls Hike - July; Aug. & Sept. Every Saturday & Sunday. Caravan from park headquarters to the Gorman area of the park and then hike to below the falls. From trailhead it is 1-1/2 mile round-trip hike over beautiful Hill Country terrain. No pets allowed on tour. No restrooms or drinking water available. 10 a.m. and 2 p.m. on Saturdays. 10 a.m. on Sundays, weather permitting. Fees \$3 adults, 915-628-3240.

Honey Creek SNA Honey Creek Canyon Walk - July; Aug. & Sept. Every Saturday. Take a hike along beautiful Honey Creek Canyon with interpretation of area culture and environment. 9-11 a.m., fees \$2 per-person, \$5 per-family, 830-438-2656.

Inks Lake SP Stumpy Hollow Nature Hike - July 8, 15, 22, 29; Aug. 12, 19, 26; Sept. 2. Discover the wildlife and ecology unique to the Hill Country on a guided hike. 10-11 a.m., 512-793-2223.

PANHANDLE PLAINS

PANHANDLE PLAINS

Caprock Canyons SP & Trailway Nature Hike - July 8, 22; Aug. 5, 19; Sept. 2, 16, 30. Join us for an interesting hike in the canyon. Learn about birds, mammals, plants, geology, and history. 7:30 a.m. in July and Aug., 8 a.m. in Sept., reservations available but not required, 806-455-1492.

Lake Rita Blanca SP & Trailway Prairieland Tour - Sept. 16. Tour Lake Rita Blanca and learn about short-grass prairie vegetation, fire ecology and view various wildlife in their natural environment. 9:30-noon, reservations required, 806-488-2227 ext. 48.

Palo Duro Canyon SP

Botany Basics - July 8; Aug. 12; Sept. 9. Take a guided tour with a plant physiologist. On this moderate 2.5-mile hike, learn about plant ecology, identification, and practical uses. Other topics will include wildlife, geology and history. 9-11:30 a.m., 806-488-2227.

Nature Hike - July 29; Aug. 19; Sept. 16. Join us for a 2.5-mile hike for some exercise, beautiful views and nature study. 9-11:30, 806-488-2227.

Family Nature Hike - July 22; Aug. 5, 26; Sept. 2. Join us for an informative 2-mile hike and learn about geology, history, wildlife and plants. This shaded hike will be conducted at a moderate pace suitable for the whole family. 9-11 a.m., 806-488-2227.

Wildflower Safari - July 15. Have you ever wanted to walk on the wild side? Come experience the beauty and adventure of the wildflowers. We will take a shaded 2-mile hike and discuss wildflower ecology and identification. Be sure to bring your camera. 9-11 a.m., 806-488-2227.

San Angelo SP Dino Walk - July 15; Aug. 19; Sept. 23. Hike back in time to see tracks left over 200 million years ago by Permian period vertebrates. The hike is 3 miles total. Meet at the North Concho River Park. 9-11 a.m., In addition to the park entry fee, the tour fees are \$1 TCP members, \$2 non-members, \$1 children 12 and under, reservations available but not required, 915-949-4757.

Macey's Ridge Hike - July 29. Five-mile hike, with moderate to rough terrain, to Macey's Ridge where an early pioneer was killed. Meet at North Concho River Park, 9 a.m.-noon. In addition to the park entry fee, the tour fees are: \$1 TCP members, \$2 non-members, \$1 children 12 and under, 915-949-4757.

PINEYWOODS

Martin Dies, Jr. SP Walk On The Wild Side - July 9, 23, 30; Aug. 6, 13, 27; Sept. 3, 10, 24. Guided interpretive hike featuring Big Thicket ecosystems and related resources along hiking trails in the Hen House Ridge or Walnut Ridge Units. 9-10 a.m., 409-384-5231.

Village Creek SP Guided Nature Trail Hike - July 8, 15, 22; Aug. 12, 19, 26; Sept. 9, 23. Two-hour, 2-mile guided hike through remnants of old Texas "Big Thicket." Exploring upland pine forests, mixed pine-hardwood forest, and bottomland forests with cypress/tupelo swamps. Topics covered include plants and animals found in the park. 9-11 a.m., reservations available but not required, 409-755-7322.

PRAIRIES AND LAKES

Cedar Hill SP Sunrise Hike - July 9; Aug. 6. Come early and beat the heat for a guided hike as the sun rises over Joe Pool Lake. 7:30-8:30 a.m., 972-291-6641.

Cooper Lake SP/Doctors Creek Unit Walk on the Wild Side - Aug. 5. Take a guided hike along the Shoreling Nature Trail. Learn to identify poison ivy, trees & wildflowers. Hear interesting facts about wildlife of the area. 10-11 a.m., reservations available but not required, 903-395-3100.

Guided Nature Hike - Aug. 26. Hike along the Shoreline Nature Trail and hear interesting facts about the flora and fauna of the area. 10-11 a.m., reservations available but not required, 903-395-3100.

Cooper Lake SP/South Sulphur Unit Sunset Nature Hike - July 29. Identify the plants, trees and wildlife as you hike. 7:30-8:30 p.m., reservations available but not required, 903-395-3100.

Guided Nature Hike - Sept. 2. Hike along Coyote Run Nature Trail and hear interesting facts about the flora and fauna of the area. 10-11 a.m., reservations available but not required, 903-395-3100.

Creatures of the Night - Aug. 19. Take a guided hike along Coyote Run Nature Trail in search of animals that roam the night. 8:45-9:45 p.m., reservations available but not required, 903-395-3100.

Buggy Whip Trail Hike - Sept. 16. Guided sunset hike where you'll hear interesting facts about area wildlife, identify plants & trees. 7:30-8:30 p.m., reservations available but not required, 903-395-3100.



SCHEDULE YOUR OWN OUTINGS

PLEASE CALL THE PARKS OR WILDLIFE MANAGEMENT AREAS LISTED HERE FOR INFORMATION ABOUT FACILITIES, ACTIVITIES AND RESERVATIONS.

Atkinson Island WMA

Unvegetated beach areas. No facilities, accessible by boat only, 409-736-2551.

Big Bend Ranch SP Hiking, backpacking, and back country camping are available north of Highway 170. TCP or daily entrance fee is acceptable for both north and south of Highway 170. For information call Big Bend Ranch Complex office at 915-229-3416 from 8 a.m.-5 p.m.

Candy Cain Abshier WMA Area primarily for birdwatching and nature study. No facilities, 409-736-2551.

Davis Mountains SP Experience backcountry hiking in the Davis Mountains, 8- to 10-mile trail climbs to a spectacular overlook with a 360° panorama. TCP or \$5 activity fee per-person. Reservations not required, 915-426-3337.

Devils River SNA Choice of two tours given upon request by reservation only. Fee of \$10 per-person plus TCP is required of individuals 17 years and older. Tour A will include a visit to an archeological pictograph site and Indian shelter, which will involve some hiking. Tour B is a scenic drive through Dolan Creek Canyon and a visit to the springs on the Devils River. Primitive camping available. Group barracks lodging for 10 people and dining hall facility available for rent. Call 830-395-2133 for tour reservations, 512-389-8900 for facility reservations.

Granger WMA Approximately 35 miles of trails crisscross the Blackland Prairie accessible by entering at TPW registration boxes 17 around Granger Lake. Tall prairie grasses, fishing and birding (see if you can spot a ringnecked pheasant) await the adventurous hiker and mountain biker. Pick up

area maps at Corps of Engineers headquarters at the dam, 512-859-2668.

Gus Engeling WMA Two interpretive, walking nature trails and one driving wildlife demonstration tour are open throughout the year except during special permitted hunts, 903-928-2251.

Hill Country SNA Go on scenic trails on horseback at Hill Country SNA. Horses and lunch on the trail provided. Travel to historic Castroville to overnight at the rustic Landmark Inn SHP with dinner at the Alsatian Inn restaurant and continental breakfast at Landmark in the morning. Fee of \$175 for two persons, double occupancy, includes trail ride, dinner and accommodations. Reservations subject to availability of rooms and trail conditions, 830-796-4413; or trail riding only at Running 'R' Ranch, call for TCP member discounts on horseback rides, 830-796-3984.

Kickapoo Cavern SNA Birdwatching and nature tours upon request. Primitive cavern tour by special arrangement. Groups encouraged, bunkhouse lodging for 14 people, and kitchen available. Please make reservations at least one week in advance. TCP required per-person (17 years or older) to enter park, 830-563-2342.

Lower Neches WMA/Bessie Heights Unit Accessible by boat only. No facilities, 409-736-2551.

Monument Hill/Kreische Brewery SHP Hear stories of how Texas heroes came to be buried on Monument Hill. Witness the breath-taking view of La Grange and the Colorado River from the bluff at Monument Hill. Take a guided tour through the park

to see the Kreische homestead and the ruins of the 19th century brewery. Tours available by reservation to groups of 10 or more, 979-968-5658.

Richland Creek WMA Six miles of driving and walking trails open except during special permitted hunts. Observe wading birds from shallow water marsh compartments on the 4,000-acre north unit between April and August. No facilities, 903-389-7080.

Walter Buck WMA Activities coordinated through South Llano River SP, 915-446-3994.

Welder Flats Coastal Preserve This area is entirely submerged land, so access is by boat. ALL shoreline area is privately owned and is NOT part of the preserve. Please do not trespass on private land and do not disturb the whooping cranes, 361-576-0022.



Hunts

GULF COAST

Fennessey Ranch Wild Boar Safari - Sept. 9. Hunt Russian boar from African brush blind. Day hunt, bring your ice chest to take home your meat. 5:30 a.m.-dark, fees \$210 adults, reservations required, 361-529-6600.

HILL COUNTRY

Colorado Bend SP Scheduled Hunts - Aug. 13-18; 20-25. 10 a.m. Aug. 13-2 p.m. Aug. 18; 10 a.m. Aug. 20-2 p.m. Aug. 25. 915-628-3240.

Rock Art

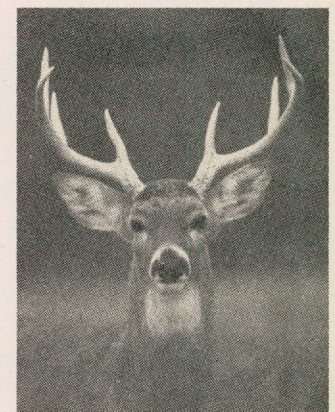
BIG BEND COUNTRY

Seminole Canyon SHP White Shaman Tour - July; Aug. & Sept. Guided hiking tour every Saturday on the Galloway White Shaman Preserve. A 2-hour tour into the Pecos River canyon to view the White Shaman. This pictograph, done in Pecos River style, has great detail. 12:30-2:30 p.m., fees \$10 per-person, reservations available but not required, 1-888-525-9907.

Fate Bell Cave Dwelling Tour - July; Aug. & Sept. Every Wednesday thru Sunday. Take a walking, guided tour to one of North America's oldest cave dwellings whose walls are covered with Pecos River-style pictographs, some 4,000 years old. Tours start at 10 a.m. and 3 p.m., fees \$3 per-person, \$1 children 6-12, 915-292-4464.

PANHANDLE PLAINS

San Angelo SP Petroglyph Tour - Aug. 5; Sept. 2. Visit the site of a Native American village and see Native American rock art. Less than 100 yard walk. Meet at South Shore entrance to park. 9-10:30 a.m. In addition to the park entry fee the event fees are, \$1 TCP members, \$2 non-members, \$1 children 12 and under, reservations available but not required, 915-949-4757.

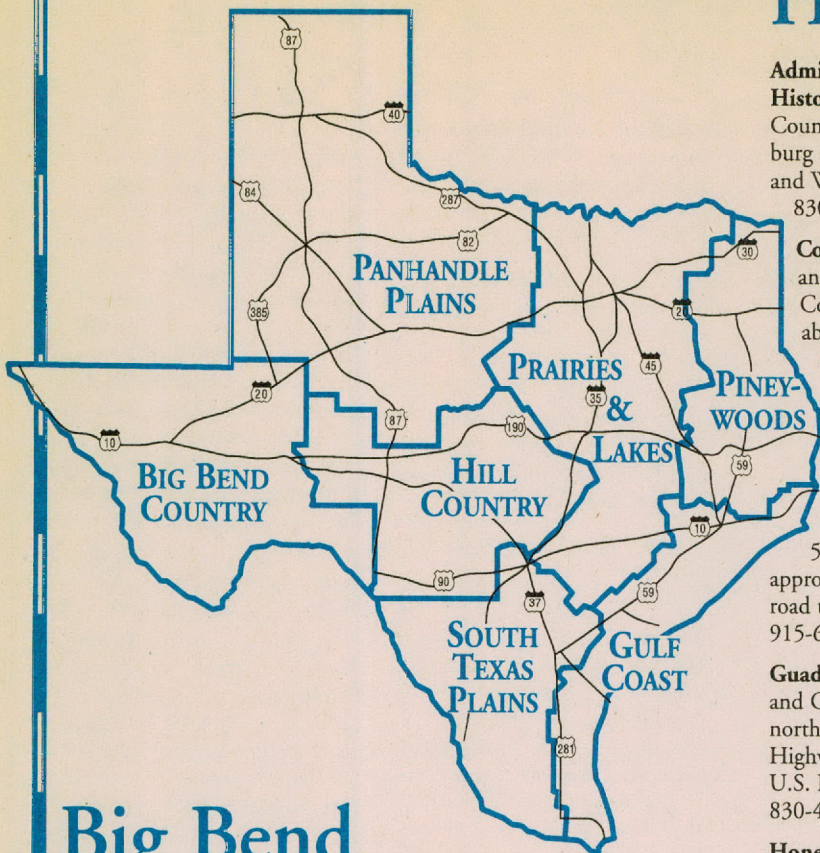




DRIVE ACROSS TEXAS

— TRAVEL DIRECTIONS TO PASSPORT PLACES

Hill Country



Big Bend Country

Balmorhea SP In Reeves County, 4 miles west of Balmorhea off Texas Highway 17, 915-375-2370.

Barton Warnock Environmental Education Center In Lajitas. Part of the Big Bend Ranch SP, 915-424-3327.

Big Bend Ranch SP In Brewster and Presidio counties, 4 miles southeast of Presidio on F.M. 170; entrance at Fort Leaton SHP, 915-229-3416.

Davis Mountains SP. In Jeff Davis County, about 4 miles northwest of Fort Davis, via State Highway 118 to entrance, 915-426-3337.

Fort Lancaster SHP In Crockett County, 8 miles east of Sheffield on U.S. Highway 290 to park entrance, 915-836-4391.

Fort Leaton SHP In Presidio County, 4 miles southeast of Presidio on the River Road to F.M. 170, to entrance, 915-229-3613.

Franklin Mountains SP In El Paso County, in the city of El Paso, west on I.H. 10, exit on the Canutillo/Transmountain Road exit, go east on Transmountain Road for 3.8 miles to park entrance, 915-566-6441.

Magoffin Home SHP In El Paso County, in the city of El Paso, east on I.H. 10, exit on Cotton Street; turn right on Myrtle Street, left on Octavia Street, left on Magoffin Street, home is on the right, 915-533-5147.

Seminole Canyon SHP In Val Verde County, 9 miles west of Comstock on U.S. Highway 90 to entrance, 915-292-4464.

Admiral Nimitz Museum & Historical Center In Gillespie County, in the city of Fredericksburg at the corner of East Main and Washington Streets, 830-997-4379.

Colorado Bend SP In Lampasas and San Saba counties, on the Colorado River about 10 miles above Lake Buchanan, near the community of Bend. Bend is north of Llano via State Highway 16 or west of Lampasas via U.S. Highway 183/190. Paved access to Bend via Ranch Roads 501, 580 or 581. From Bend there are approximately 4 miles of unpaved road to the park entrance, 915-628-3240.

Guadalupe River SP In Kendall and Comal counties, 30 miles north of San Antonio on State Highway 46 between Boerne and U.S. Highway 281 to entrance, 830-438-2656.

Honey Creek SNA Access through Guadalupe River SP, see above, 830-438-2656.

Inks Lake SP In Burnet County, 9 miles west of Burnet on State Highway 29, east on Park Road 4 and go 3 miles to park entrance, 512-793-2223.

Kerr WMA In Kerr County, 14 miles west of Hunt, accessed off F.M. 1340, to entrance, 830-238-4483.

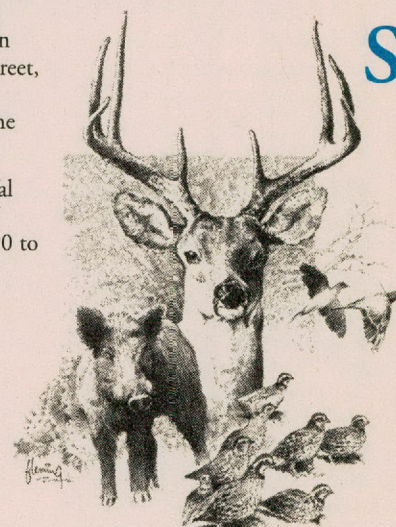
Kerrville-Schreiner SP In Kerr County, 3 miles southeast of Kerrville on State Highway 173 to entrance, 830-257-5392.

Landmark Inn SHP In Medina County, in the city of Castroville one block west of the Medina River bridge at the corner of Florence and U.S. Highway 90 to entrance, 830-931-2133.

Lyndon B. Johnson SHP In Gillespie County, 16 miles east of Fredericksburg on U.S. Highway 290 to park entrance, 830-644-2252.

Old Tunnel WMA In Kendall County, from Fredericksburg, take U.S. Highway 290 east 1 mile to Old San Antonio Road (also Grapetown exit). Head south on Old San Antonio Road 10 miles to the WMA on the left. From Comfort, take Ranch Road 473 north (go past Sisterdale turnoff) 12 miles to the WMA on the right, 830-644-2478.

X Bar Ranch In Schleicher County, 20 miles southwest of Eldorado on F.M. 2129. Office is in Eldorado across from the courthouse on U.S. Highway 277, 915-853-2688.



South Texas Plains

Bentsen-Rio Grande Valley SP In Hidalgo County, 3 miles south of Mission on F.M. 2062 to entrance, 956-585-1107 or 956-585-0902.

Chaparral WMA In La Salle and Dimmit counties, 8 miles west of Artesia Wells on F.M. 133 to entrance, 830-676-3413.



Gulf Coast



Brazos Bend SP In Fort Bend County, 10 miles west of Rosharon on F.M. 1462 then 1 mile north on F.M. 762 to entrance, 979-553-5101.

Fennessey Ranch In Refugio County, between Refugio and Bayside off F.M. 2678. For detailed directions call 361-529-6600.

Sabine Pass Battleground SHP In Jefferson County, 1.5 miles south of Sabine Pass on F.M. 3322 to entrance, 409-971-2451.

Varner-Hogg SHP In Brazoria County, 2 miles north of West Columbia off F.M. 2852 to entrance, 979-345-4656.

Prairies and Lakes

Cedar Hill SP In Dallas County, approximately 15 miles southwest of Dallas on Joe Pool Lake and 2 miles northwest of Cedar Hill on F.M. 1382 south, to park entrance, 972-291-3900.

Cooper Lake SP/Doctor's Creek Unit In Hopkins County, 16 miles north of Sulphur Springs on State Highway 154/19; turn west onto F.M. 1529 to entrance, 903-395-3100.

Cooper Lake SP & WMA/South Sulphur Unit In Hopkins County, 12 miles north of Sulphur Springs on State Highway 154/19; turn west onto F.M. 71 for 5 miles, then north on F.M. 3505 to entrance, 903-945-5256.

Dinosaur Valley SP In Somervell County, 4 miles west of Glen Rose on F.M. 205/Park Road 59, 1 mile to headquarters, 254-897-4588.

Fanthorp Inn SHP In Grimes County, 10 miles east of Navasota on State Highway 90 in the town of Anderson, 936-873-2633.

Fort Parker SP In Limestone County, between Mexia and Groesbeck, off State Highway 14 to entrance, 254-562-5751.

Lake Mineral Wells SP In Parker County, 4 miles east of Mineral Wells on U.S. Highway 180 to entrance, 940-328-1171.

Lake Whitney SP In Hill County, 3 miles west of Whitney on F.M. 1244 to park entrance, 254-694-3793.

Monument Hill/Kreische Brewery SHP In Fayette County, 1 mile south of La Grange off U.S. Highway 77 to spur 92, to entrance, 979-968-5658.

Ray Roberts Lake SP/Isle du Bois Unit In Denton County, 25 miles northeast of Denton on I.H. 35 to Pilot Point exit, then east on F.M. 455 to entrance, 940-686-2148.

Ray Roberts Lake SP/Johnson Branch Unit In Denton and Cook counties, 25 miles northeast of Denton on I.H. 35 to Lone Oak Road exit, then east on F.M. Road 3002 for 7 miles to park entrance, 940-637-2294.

Texas Freshwater Fisheries Center In Henderson County, 5 miles east of Athens, take State Highway 31 to F.M. 2495 next to Lake Athens, 903-676-2277.

Washington-on-the-Brazos SHP In Washington County, 21 miles northeast of Brenham on State Highway 105, then turn onto F.M. 912 to entrance, 936-878-2214.

Panhandle Plains

Caprock Canyons SP & Trailway In Briscoe County, 3 miles north of Quitaque. Take State Highway 86 to Quitaque, then take F.M. 1065 to the park, 806-455-1492.

Copper Breaks SP In Hardeman County, 12 miles south of Quanah or 11 miles north of Crowell on State Highway 6 to park entrance, 940-839-4331.

Fort Griffin SHP In Shackelford County, about 15 miles north of Albany on U.S. Highway 283 to park, 915-762-3592.

Fort Richardson SHP & Lost Creek Reservoir State Trailway In Jack County, 1 mile southeast of Jacksboro on U.S. Highway 281 to the park entrance, 940-567-3506.

Lake Rita Blanca SP In Hartley County, 2 miles south of Dalhart off U.S. 87 to west on F.M. 281 to lake entrance, 806-488-2227.

Palo Duro Canyon SP In Armstrong and Randall counties, 12 miles east of Canyon on State Highway 217. From Amarillo, south on Ranch Road 1541, to State Highway 217 east for 8 miles, to park entrance, 806-488-2227.

Pineywoods

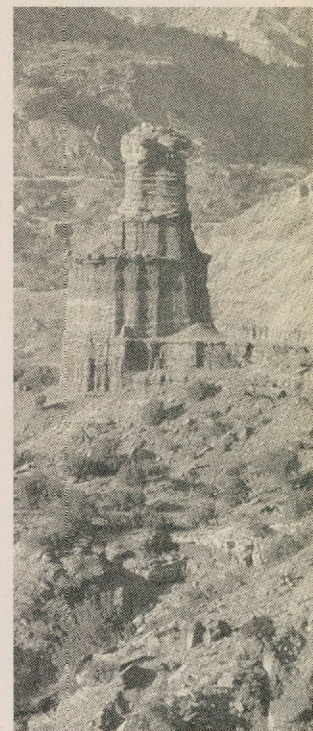
Governor Hogg Shrine SHP In Wood County, in the city of Quitman 6 blocks from the Wood County Courthouse on State Highway 37 south to entrance, 903-763-2701.

Jim Hogg SHP In Cherokee County, 2 miles northeast of Rusk off U.S. Highway 84 to entrance, 903-683-4850.

Martin Creek Lake SP In Rusk County, 3.5 miles southwest of Tatum, on State Highway 43 to County Road 2183 south to park entrance, 903-836-4336.

Martin Dies, Jr. SP In Jasper County, 17 miles east of Woodville on U.S. Highway 190 to entrance, 409-384-5231.

San Angelo SP In Tom Green County, 1 mile west of San Angelo, on the O.C. Fisher Reservoir, via either U.S. Highway 87 or 67 to F.M. 2288 to park entrance, 915-949-4757.



Texas State Railroad SHP In Anderson County, in the city of Palestine 2 miles east of Loop 256 on U.S. Highway 84 to Palestine train station. In Cherokee County, 2 miles west of Rusk via U.S. Highway 84 to Rusk train station, 903-683-2561.

Village Creek SP In Hardin County, 10 miles north of Beaumont in the city of Lumberton. From U.S. Highway 69 north, take Mitchell Road exit to Village Creek Parkway and go approximately 2 miles, turn east onto Alma Drive to park entrance, 409-755-7322.



Lone Star Legacy

Interpretive Programs

PANHANDLE PLAINS

Copper Breaks SP Summer Art Exhibit - July 21-Aug. 20. Local and regional artists exhibit their work in the headquarter's museum. Opening reception 7:30-8:30 p.m., Daily 8 a.m.-5 p.m., fees TCP members free, \$2 adults, \$1 senior citizens, children 12 and under free, 940-839-4331.

Palo Duro Canyon SP Lone Star Legacy - Sept 9. Join us for an evening of lively music, good food and fun. Money raised will help support Palo Duro Canyon SP. Call park for time and fees, 806-488-2227.

BIG BEND COUNTRY

Barton Warnock Environmental Education Center Garden Tour - July. Tour the Desert Garden with an emphasis on the useful and edible plants found in the Chihuahuan Desert. Every Friday-Tuesday, 8 a.m.-4 p.m., fees \$3 adults, \$2 senior citizens, \$1 children 12 and under, 915-424-3327.

GULF COAST

Brazos Bend SP Weekend Nature Programs - July; Aug. & Sept. There will be different programs every weekend and will vary from nature hikes, slide programs, lectures and demonstrations. Call the park for details, 979-553-5102.

HILL COUNTRY

Guadalupe River SP Amphitheater Adventure - July; Aug. & Sept. Join us every Saturday night for an exploration of the world in which we live. Call for times, fees \$4 adults, \$2 senior citizens, free children 12 and under, 830-438-2656.

PANHANDLE PLAINS

Palo Duro Canyon SP Evening Programs - July; Aug. & Sept. There will be different programs every Friday, Saturday & Sunday and may include slide shows, music, storytelling and stargazing. Call the park for more details, 806-488-2227.

PRAIRIES AND LAKES

Cedar Hill SP Curious Wildlife Facts - July 29. Find out the answers to many of your wildlife questions from park interpreter. 8-9 a.m., 972-291-6641.

Cooper Lake SP/Doctors Creek Unit African Safari - July 22. Enjoy an evening slide show in the park amphitheater featuring the wildlife of East Africa. 8:45-9:45, reservations available but not required, 903-395-3100.

Visit to the Galapagos Islands - Aug. 12. Enjoy an evening slide presentation about the Galapagos Islands. Take a journey through the islands and see them as Charles Darwin saw them during his visit in 1835. 8:45-9:45 p.m., reservations available but not required, 903-395-3100.

Outdoor Education



BIG BEND COUNTRY

Big Bend Ranch SP Private Guide Training Program - July. Mandatory course for persons or outfitters wishing to conduct commercial tours of the park. Applicants must also make out a Request for Proposal, purchase an annual guiding permit and carry sufficient insurance as designated. Food and lodging not covered. Fees \$100 per-person. Call for times and dates, 915-229-3416.

HILL COUNTRY

Kerr WMA Range and Wildlife Management Seminar - July 7; Aug. 4; Sept. 8. Learn all facets of white-tailed deer management including nutrition, genetics, population control, prescribed burning and rotational grazing. 1:30-5 p.m., 830-238-4483.

Kerrville-Schreiner SP Educational Programs - July 29. Topics to be announced. 9-10:30 a.m., 7:30-9 p.m. Call park for details. 830-257-5392.

PRAIRIES AND LAKES

Cooper Lake SP/Doctors Creek Unit Venomous Animals and Poisonous Plants - Sept. 9. Hear about common venomous animals and plants of the area. Learn how these affect you and what you should do if you are bitten by a venomous animal or come in contact with a poisonous plant. 10-11 a.m., reservations available but not required, 903-395-3100.

Venomous Snakes - July 8. Learn about the venomous snakes of Texas and the type of habitat these snakes are usually found. Also learn the identifying characteristics of these reptiles. 10-11 a.m., reservations available but not required, 903-395-3100.

Lake Whitney SP Boater Education Instructor Training - Aug. 20. Boater Education is required to take the Instructor Training course. 8 a.m.-5 p.m., reservations required, 254-694-3793.

Hunter Education - Sept. 24. Testing and field work for the home study course. 1-6 p.m., fees \$5, reservations required, 254-694-3793.

Hunter Education Instructor Training - Sept. 23-24. Completion of Hunter Education course required to attend class. 8 a.m.-5 p.m. Sept. 23, 8 a.m.-noon Sept. 24, reservations required, 254-694-3793.

Boater Education - Aug. 19. Class will be held 9 a.m.-5 p.m., fees \$5 per-person, reservations required, 254-694-3793.

SOUTH TEXAS PLAINS

Chaparral WMA Wildlife Management Symposium - Sept. 22. A half-day symposium with emphasis on management issues in South Texas, followed by a catered lunch and a tour of the Chaparral Wildlife Management Area. 8:30 a.m.-3 p.m., reservations required, 830-676-3413.



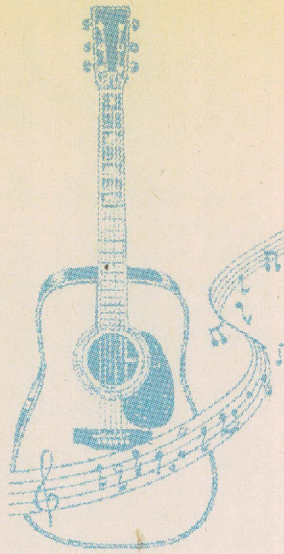
Texas Music

HILL COUNTRY

Kerrville-Schreiner SP Music by the River - July 15. Come out and enjoy live music along the banks of the Guadalupe River. 7:30-9 p.m., 830-257-5392.

PANHANDLE PLAINS

Palo Duro Canyon SP "Texas" - July & Aug. Join us for the 34th season of the world famous musical drama, "Texas." Set in the beautiful outdoors, this grand production tells the story of the life and struggles of early Texas pioneers. 8:30-11 p.m., call for prices, reservations available but not required, 806-655-2181 or 806-488-2227.



Night Noises

HILL COUNTRY

X Bar Ranch X Bar Dinner Series - July 14. Enjoy dinner and the "Animal Calls of the Wild" presentation by Dr. Dale Rollins of Texas A & M Research Center. 7 p.m., Call for reservations and prices, 888-853-2688.

PANHANDLE PLAINS

Caprock Canyons SP & Trailway Night Noises of the Canyon - Aug. 5. Take a short walk and investigate night noises. Listen for owls, coyotes, and other night creatures. 9 p.m., reservations available but not required, 806-455-1492.

PRAIRIES AND LAKES

Cedar Hill SP Coyote Howl - July 8; Aug. 12. Join us for a short program on coyotes then hike to a remote location for a "Coyote Howl." 8-9 p.m., 972-291-6641.

Calling All Owls - July 22; Aug. 26. Join us for an informative program on owls followed by an owl call. 8-9 p.m., 972-291-6641.

Guided Night Hike - July 15; Aug. 19. Enjoy hiking the trails in the cool evening temperatures when many of the park's inhabitants are more active. 8-9 p.m., 972-291-6641.

Biking

HILL COUNTRY

X Bar Ranch X Bar Ranch Shoot Out Mountain Bike Race - Sept. 16-17. Second annual cross-country mountain bike race as part of the Texas Mountain Bike Racers Association fall series. Reservations required, 888-853-2688.

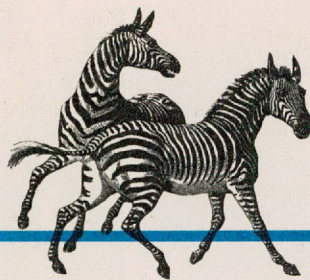
X Bar Summer Bike Ride - July 15. Ride the trails or roads of the ranch. Guided rides, swimming, lodging, camping and meals available. Call for reservations and prices, 888-853-2688.

Fishing

PANHANDLE PLAINS

Caprock Canyons SP & Trailway Fish With An Expert - July 8. Join a biologist for a short talk and answer questions, then cast your line into Lake Theo. Bring your own rod, reel, and fishing license. 7 p.m., reservations available but not required, 806-455-1492.

PASSPORT VALUES



Fossil Rim Wildlife Center
TCP members qualify for discounts on admission to the Scenic Wildlife Drive. Enjoy a 9-mile drive among friendly giraffes, antelopes, zebras and many other animals from around the world. Open year-round. Call 254-897-2960 for more information.

Longhorn Cavern State Park
With each current TCP, you can purchase a Longhorn Cavern tour ticket for \$7, discounted from the regular \$8 price. For children age 5 through 12, the ticket price is \$4.50, and children age 4 and under are free. Call 512-756-6976 for recorded information on times and tours.

X Bar Ranch near Sonora gives TCP members a discount on lodging. Hike, go mountain biking, ride horses or relax at this fifth-generation family ranch. Lodging in private houses or cabins. Plenty of wildlife viewing and other activities. For reservations, information and directions call toll free 888-853-2688. Web site: www.xbarranch.com E-mail: xbar@compuserve.com



Stargazing

HILL COUNTRY

Kerrville-Schreiner SP Star Party - July 29. Join members of the San Antonio Astronomical Society for an evening with the stars. View the summer sky through one of several telescopes. 9-11 p.m., 830-257-5392.

PANHANDLE PLAINS

Copper Breaks SP Starwalk - Aug. 5; Sept. 2. Take a night-time tour of the night sky over the park. Some members of the Dallas Astronomical Society will have their telescopes available for use. This is the greatest fireworks display in the universe. Sunset-till, fees \$2 adults, \$1 senior citizens, free to children 12 and under, 940-839-4331

Fort Griffin SHP Stargazing Party - July 29; Sept. 23. View the night sky through large telescopes. See the moon's of Jupiter, the rings of Saturn, the constellation of Andromeda and much, much, more! Dusk to dawn, reservations available but not required, 915-762-3592.

San Angelo SP Stargazing Party - Aug. 5. Join San Angelo's Amateur Astronomy Club as they look at the night sky. They will provide telescopes and answer questions about the cosmos. Meet at the North Concho River Park on the south side of the North Concho River bridge on FM 2288. Sundown till midnight, in addition to the park entry fee, the event fee is \$1 TCP members, \$2 non-members, \$1 children 12 and under, reservations available but not required, 915-949-4757.

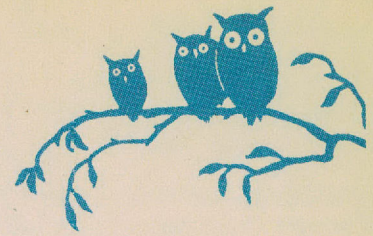
PRAIRIES AND LAKES

Dinosaur Valley SP Star Watch - Aug. 26. Join the Fort Worth Sidewalk Astronomers for an evening under the stars for a stellar tour. View distant planets and constellations using a variety of telescopes. Viewing begins at dusk, 254-897-4588.

Lake Mineral Wells SP & Trailway 4th Annual North Texas Skywatch Amateur Astronomer's Star Party - Sept. 30. The star party is designed for amateur astronomers to get together and share ideas and experiences, learn new techniques, swap equipment and observe in a dark sky location. There will be a beginner's astronomy slide presentation at sunset. All park visitors are welcome and can learn about astronomy and have a chance to see the night sky through a wide variety of telescopes. 4 p.m., 940-328-1171.

Lake Mineral Wells SP & Trailway Stargazing-Beginning Astronomy - Aug. 12. Become familiar with the constellations of the season, specific stars and objects of interest. The program will start with a slide presentation followed by telescope observation. Several telescopes will be provided, but you may bring your own telescope, binoculars, blanket, or lawn chair. 8:30 p.m., 940-238-1171.

Lake Whitney SP Building a Telescope Star Party - Aug. 26-27. Build an 8-inch reflector telescope including lens grinding and construction of an actual working telescope. Star Party following completion of class from dark-till. 254-694-3793.



Texas Conservation Passport Journal

July 2000 - September 2000
Vol. 9, No. 3

Texas Parks and Wildlife

To manage and conserve the natural and cultural resources of Texas for the use and enjoyment of present and future generations.

Governor of Texas

George W. Bush

Commission

Lee Bass, Chairman, Fort Worth
Carol Dinkins
Vice-Chair, Houston

Ernest Angelo, Jr., Midland
John Avila, Jr., Fort Worth
Richard (Dick) Heath, Dallas
Alvin L. Henry, Houston
Katharine Armstrong Idsal, Dallas
Nolan Ryan, Alvin
Mark E. Watson, Jr., San Antonio

Perry R. Bass, Chairman-Emeritus,
Fort Worth

Executive Director

Andrew Sansom

Communications Director

Lydia Saldaña

Journal

Emily Carter, Editor
Dianne Sebai, Events Editor
Darcy Hamburg, Marketing Director

We want to hear from you!
Please send your comments,
complaints and suggestions to:

Texas Conservation Passport

4200 Smith School Road
Austin, TX 78744
FAX: 512-389-8029

E-mail: passport@tpwd.state.tx.us

Texas Conservation Passport Journal

(ISSN 10832823) (USPS 012968)

is published quarterly by Texas Parks and Wildlife,
4200 Smith School Road, Austin, TX 78744.

Both the \$50 and \$25 membership fees include
the \$4.95 annual cost of this publication.

Periodicals Postage Paid at Austin, TX.

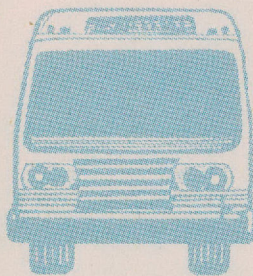
POSTMASTER:

Send address changes to

Texas Conservation Passport Journal
4200 Smith School Road
Austin, TX 78744

© 2000 Texas Parks and Wildlife

Field Trips on Wheels



PANHANDLE PLAINS

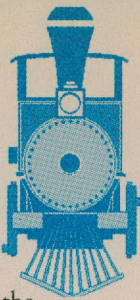
Caprock Canyons SP & Trailway Canyon Ramblings - July 29; Aug. 26; Sept. 23. Travel the back trails in an open-air vehicle to view wildlife and scenery. 7 p.m., fees \$10 TCP members, \$15 non-members, \$12 senior citizens, \$8 children 12 & under, reservations required, 806-455-1492.

SOUTH TEXAS PLAINS

Bentsen-Rio Grande Valley SP Kiskadee Bus Tour - July; Aug. & Sept. Tours are held every Tuesday & Friday. A bus tour to some of the best birding hot spots in Texas. Bring a sack lunch, binoculars, bird book and comfortable shoes. 7:30 a.m.-4:30 p.m., fees \$25 per-person, reservations required, 956-519-6448.



Trains



PINEYWOODS

Texas State Railroad SHP Steam Engine Shop Tour - Aug. 5; Sept. 2. Visit one of the nation's best known steam engine restoration shops. See steam engines, passenger coaches, business coaches and other historic railroad equipment. 3-4 p.m., reservations available but not required, 800-442-8951, 903-683-2561 outside Texas.

Starlight Steam Train Excursion - Sept. 2. Sit back and enjoy a romantic evening steam train excursion. The beauty of the East Texas Pineywoods is enhanced as the evening sun fades and the stars begin to glitter through forest canopy. 6-10 p.m., fees \$15 adults, \$10 children 12 and under, reservations required, 800-442-8951, 903-683-2561 outside Texas.

Reunions

PINEYWOODS

Governor Hogg Shrine SHP Old Settlers Reunion - Aug. 2-5. Celebrate here and at the city park with gospel singing, talent night, country music, and an Old Fiddlers Contest. 6 p.m.-12 a.m., 903-763-2701.

Jim Hogg SHP Afro-American Hogg Family Reunion - Aug. 26. Reunion of the descendants of the slaves from Mountain Home Plantation. The park rests on acreage original to the plantation, the birthplace of Gov. James S. Hogg. 10 a.m.-4 p.m., fees \$1 adults, 903-683-4850.

Fort Parker SP Civilian Conservation Corps Reunion - Aug. 19, 254-562-5751.



Caving

HILL COUNTRY

Colorado Bend SP Wild Cave Tours - July; Aug. & Sept. The crawling tour takes you through several relatively small and progressively more difficult caves. The walking tour takes you to Gorman Cave. Walking Cave Tours at 9:15 a.m. on Saturday & Sunday. Crawling Cave Tours at 1:30 p.m. on the first Saturday of the month. Both tours, resources and weather permitting, fees \$10 per-person for walking tour and \$15 per-person for crawling tour, reservations required, 915-628-3240.

TEXAS PARKS AND WILDLIFE

At Your Service

SUBSCRIPTIONS

Texas Parks & Wildlife magazine offers a reduced rate of \$8 for one year to all TCP members. To subscribe at this special rate have your TCP member number handy and call 800-937-9393.

ON RADIO

Passport To Texas takes you on a 90-second radio journey into the Texas outdoors. Look for station listings: www.passporttotexas.com



Funded in part by The Dow Chemical Company and the Sport Fish & Wildlife Restoration Program in Texas.

ONLINE

Make state park reservations via our Web site:
www.tpwd.state.tx.us

ON THE PHONE

Park reservations or cancellations
512-389-8900
Monday thru Friday 9 a.m.-8 p.m.
Saturday 9 a.m.-12 p.m.
Voice Mail: 24 hours a day
Indian Lodge 915-426-3254
Texas State Railroad 800-442-8951

Wildlife Management Areas call individual areas on a weekday, 8-9 a.m. and 12-1 p.m., to make sure you can have access. Each event listing includes the phone number.

TCP MEMBERSHIPS

A Gold Texas Conservation Passport is a \$50 annual membership with a vehicle pass good for 12 months from the month of purchase.

It gives you:

- Free entrance at parks where entrance fees are charged and one free tour every time you visit one of our historical parks. Parks charging both an entrance fee and an historical tour fee may offer either: free entrance or one free tour, but not both. Hueco Tanks SHP gives one free entry per TCP.
- Includes subscription to the quarterly *Texas Conservation Passport Journal*.
- Special access to restricted Wildlife Management and State Natural Areas and trips to private Texas ranches.

It's easy to join, ask for the Gold Texas Conservation Passport at:

- Your nearest Texas State Park
- Any Texas Parks and Wildlife regional law enforcement office

- Your nearest license retailer
- Call toll-free 800-895-4248; listen to the menu and press the extension for License Sales.

The Gold Texas Conservation Passport includes both a gold windshield decal and a paper license. The Gold decal is available **ONLY** at state parks.

- The gold windshield decal is your vehicle pass and must be permanently attached to the vehicle windshield in order to receive the free entrance benefit when entering Texas State Parks by vehicle.
- You must keep the paper license to show to the proper authorities (if necessary) when you enter Texas State Parks regardless of whether you enter in a vehicle or on foot, by bicycle, motorcycle, airplane or boat. It is your proof of purchase and not an entry permit.
- If you plan to use more than one vehicle or if you plan to use alternate means of transportation in addition to your vehicle, you will need duplicate gold windshield decals.

For member assistance and information, call 800-792-1112; listen to the menu and press the extension for Texas Conservation Passport.



Troubled Water

Texas has 191,000 miles of streams and rivers that play a key role in maintaining much of our natural heritage. Those waters flow into 212 major reservoirs and eventually into seven major estuaries along the Texas coast. In addition to watering the land, these ecosystems support the best inland and coastal fisheries in the United States, and they provide recreational benefits to millions of Texans.

The wetlands and the vegetated (riparian) corridors associated with streams and rivers and the marshes and sea grass beds of coastal estuaries are an integral part of aquatic ecosystems. They play a key role in protecting water quality, preventing erosion, and providing nutrients for fish and wildlife. Wetland habitats also provide valuable links to upland terrestrial ecosystems.

River headwaters that begin in arid west Texas form an unbroken connection to coastal habitats. Every person, all wildlife, all vegetation, all industry and all farming operations are ultimately neighbors when they live in the same river basin.

The most fundamental and common element of this ecological neighborhood is water. Everyone has a stake in water planning.

The 1997 Legislature passed a comprehensive statute that calls for a statewide water plan to cope with drought, population growth and environmental issues. The historic legislation, designated as Senate Bill 1, creates a blueprint for managing water resources, and addresses drought planning, regulation of water rights, public information and financial and technical assistance.

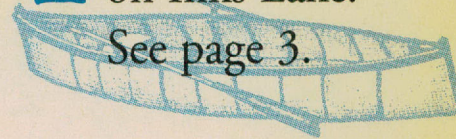
One of Texas Parks and Wildlife's most important goals is "to assure fresh-water inflows to estuaries and instream flows for rivers and streams, and into reservoirs that conserve the health and productivity of aquatic ecosystems."

For Texas Water details check our Web site at: www.tpwd.state.tx.us

T

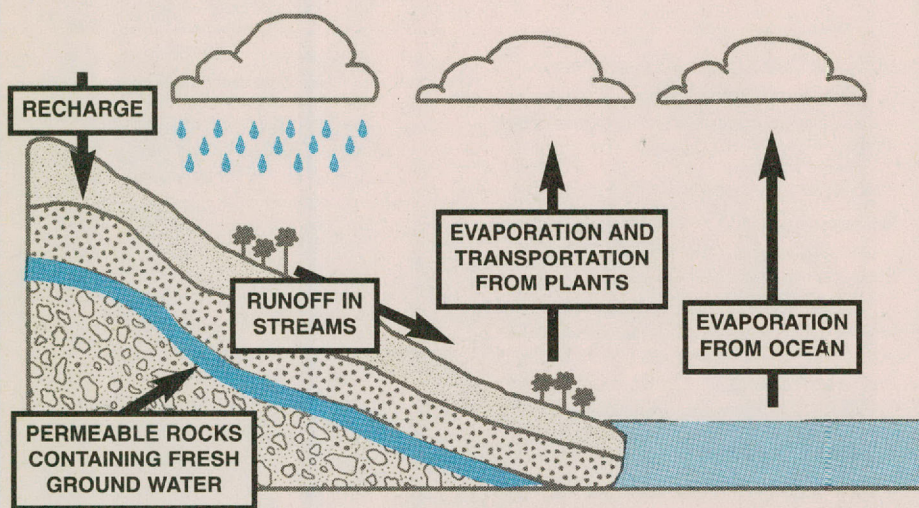
ake a canoe trip on Inks Lake!

See page 3.



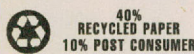
TEXAS PARKS AND WILDLIFE

Texas Water	1
Inks Lake SP	2
Water Based Recreation in State Parks	3
Explore the Real Texas	4-9
Special Event.....	5
Schedule Your Own Outings	9
Drive Across Texas	10-11
Lone Star Legacy.....	12
Passport Values.....	13
At Your Service	15



Texas receives about 366 million acre-feet of rain annually, but where does the rain come from? It comes from the never-ending exchange of water evaporating from the earth, rivers, lakes, wetlands and oceans into the atmosphere and falling back to earth as rain.

TEXAS
CONSERVATION
PASSPORT
JOURNAL
4200 Smith School Road
Austin, TX 78744



Dispersal of the publication conforms with Texas State Documents Depository Law, and it is available at Texas State Publications Clearinghouse and/or Texas Depository Libraries.

PWD BR C2000-144 (7/2000)