

P400.6
P268
94/6-8

Government Publications
Texas State Documents

JUL 16 1994



3:2

PASSPORT SM

Texas Parks & Wildlife Department
Vol. 3 No. 2 • June 1994 - August 1994

JOURNAL

Your passport to the real Texas.

SEA RIM STATE PARK

Your Quiet Summer Place

Out beyond the rest of Texas...waiting just for you...there's a place at land's end called Sea Rim State Park. Its warm beaches greet you with gentle waves and a secluded feeling. Tuck your tent behind a sand dune or put it out on the open beach. Bring your RV and stay for a week. Your summer days stretch into memories of splashing in the surf, beachcombing, sunning, fishing, birdwatching and eating sea food dinners in Sabine Pass.

Picnic at the Sabine Pass Battleground SHP and tour the Civil War ramparts; use the boat ramp to launch a pleasure craft in the Sabine River channel (20-foot maximum for the boat ramp). Or, ride an air boat through the marsh and see alligators, muskrat, mink and red-winged blackbirds. If you have a shallow-draft boat, it can navigate the marsh.

Sea Rim is outside Port Arthur near the Louisiana state line. And, there's only one route open all the way to the park. State Highway 73 takes you into the oil refineries in Port Arthur...keep going on State Highway 87 another 21 miles! Soon you'll see ships, coastal grasses and arrive at the town of Sabine Pass. Turn left at the traffic light and... finally...the open Gulf with sea gulls, sun and ocean breezes.



Bill Reeves

BEACHCOMBING AT SEA RIM STATE PARK

Coastal Ecotours page 16

Angela Deaton	2
Portuguese Man-O-War	2
Alligator Outings	3
Discounts & Deals	3
Summer Events	4-9
Drive Across Texas	10-12
Schedule Your Own Outings	13
Texas Country Reporter	13
Kudos to VIPs	14



Gambusia Marsh Trail

Visit the Gambusia boardwalk at Sea Rim SP and enter the world of tidal marshlands, a rich feeding ground for animals from microscopic one-cell plankton at the bottom of the food-chain to alligators at the top. Fish, feeding near the surface, make ripples in the ponds; turtles, snakes and alligators sun themselves on the shoreline. Black-necked stilts and roseate spoonbills fly among tall Cordgrasses. Out beyond the marsh grasses you see dunes and the beach with white capped waves rolling in from the open sea.



“...people doing the work of conservation...park volunteers, park managers, wildlife and fisheries biologists, botanists, historians and restoration artists are the wind beneath the wings of the Texas Conservation Passport program...”

1.0049
2089
2-2-40
1:8

GALVESTON ISLAND STATE PARK

ANGELA DEATON

Assistant Park Manager


“People find a beached jellyfish, it looks like a bubble so they touch it,” Angela said. But jellyfish automatically release painful toxins when they are touched...even if the animal is dead. “We treat stings with alcohol and unseasoned meat tenderizer because it breaks down the proteins in the venom and relieves the pain after 15 minutes or so.”

“What’s the best thing about working in a park? It’s the people. Most of my time is spent making daily reports and doctoring minor injuries, like jellyfish stings, but meeting campers is more fun.”

“A single mom came in during spring break with a borrowed tent and of course no one thought about needing instructions while it was being packed. It was a big canvas job - two rooms and a screened porch. Well I helped, and with some crazy coaching from the sidelines, we got the tent up. It takes courage to be a single mom and take kids camping. This is the best part of the job...meeting people on a daily basis.”

Physalia physalis

PORTUGUESE MAN-O-WAR

A brilliant azure-blue sail floating on the sea conceals hundreds of tentacles covered with nematocyst cells. Touching the cells causes them to rupture and discharge a toxic barbed thread. Deep in the water, the tentacles stream along and stun small prey fish for the animal to retrieve and eat. 

ALLIGATOR OUTINGS

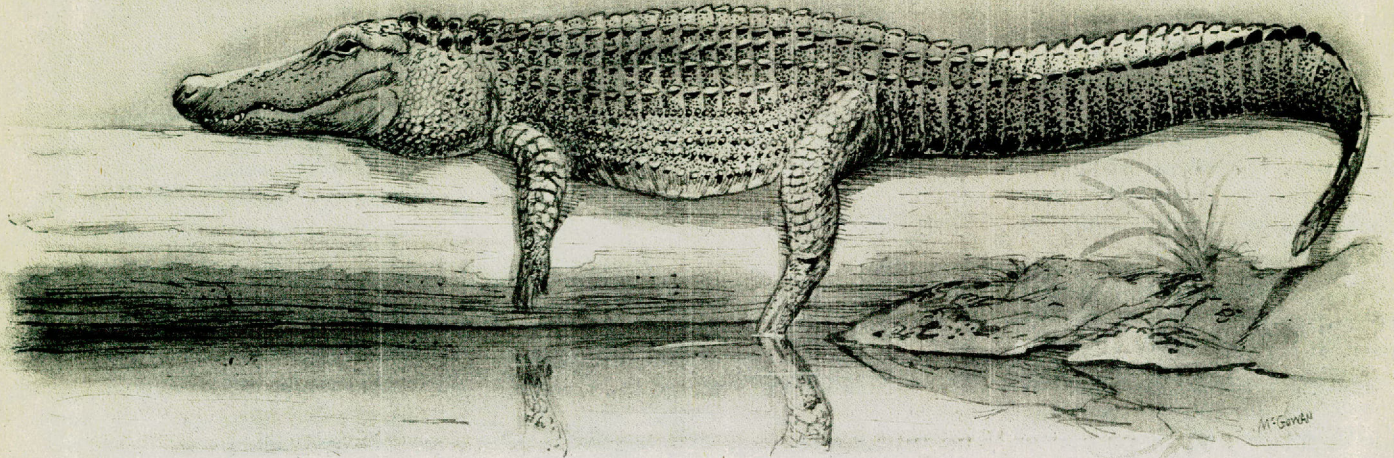
Houston/Upper Gulf Coast

Sea Rim SP Boat Tour of Coastal Marsh - June 4, 9, 18, 23; July 2, 7, 16, 21, 30; Aug. 4, 13, 18, 27. Travel by airboat or outboard out into the marshlands unit of the park. Birdlife, plants and alligators will be observed. Morning outings every other Saturday 9-11 a.m., evening outings every other Thursday 6-8 p.m., additional fee of \$10 adults and \$5 children 6-12 years, passport holders get \$2 discount per family member, reservations required, guide park ranger B. Graham, 409-971-2559.

Rio Grande/Brush Country

James E. Daughtrey WMA Alligator Nesting Tour - Aug. 13, 20, 27. Watch a film on alligators followed by an up-close view of one of last years nesting sights. Will view an active nesting sight if possible. 1-3 p.m., reservations required, limited to 12 people, guide conservation specialist T. Smith, 512-786-3868. ♻️

Indiscriminate hunting put alligators on the endangered species list. Now, with populations rebounding, they are found in coastal marshlands and inland marshes, swamps and oxbow lakes.



Fossil Rim Wildlife Center Texas Conservation Passport holders are qualified for discounts on entrance rates, overnight lodging and the three-day, two-night adventure at Fossil Rim Safari Camp. Call 817-897-2960 for details and a list of activities.

Longhorn Cavern State Park With each current Conservation Passport you can purchase a Longhorn Cavern tour ticket for \$5, discounted from the regular \$6.50 price. For children age five through twelve, the ticket price is

\$4 and children age four and under are free. Call 512-756-6976 for recorded information on times and tours.

Running 'R' Ranch in Bandera offers Passport holders discounts on its horseback rides. When you take advantage of this special offer, you'll have the opportunity to explore the **Hill Country SNA** during your ride. Passport discounts are also offered for overnight accommodations that includes a bunk house that sleeps six with full kitchen, central air/heat and a covered deck. For more information, call Charles "Doo" Robbins or Jo Cubbison at the ranch, 210-796-3984.

The Horse Stables Enjoy a horseback ride and picnic every Saturday and Sunday at 9:30 a.m., 12:30 p.m. and 3:30 p.m. Guided cross country trip through remote areas of **Pedernales**

Falls State Park. View 4800 acres of spectacular scenery from a high ridge. Passport holders get 10 percent discount. Reservations and deposits required. Mounts, picnic and guide provided. (View the art of horse-shoeing the first Saturday of each month with picnic ride. Ask to be included in this session guided by Farrier S. Heald). Call The Horse Stables reservation line at 512-479-9443 in Austin or 210-868-0314 in Johnson City.

Moonlight by horseback Friday and Saturday nights. Stargaze from a high ridge in remote area of **Pedernales Falls State Park.** Discounts for passport holders. Guide and mount provided. Reservations required through The Horse Stables at 512-479-9443 in Austin or 210-868-0314 in Johnson City. ♻️

EXPLORE THE REAL TEXASSM

FOR THE BIRDS



Austin/San Antonio/Hill Country

Kickapoo Cavern SNA Bird Banding Observation - Aug. 18. Observe netting, banding and release of birds and learn aging and sexing techniques. Bring lunch, walking shoes, insect repellent and sunscreen. 9 a.m.-noon, reservations required, guide park manager D. Stuart, 210-563-2342.

McKinney Falls SP Painted Bunting Tour - June 4, 11, 18, 25; July 2. Learn about the painted buntings habits, why its here and how to locate the bird by its call. 8:30-10 a.m., additional fee of \$2 per person, reservations required, guide park manager N. Ochs, 512-243-1643.

Pedernales Falls SP Birdwatching - June 5, 12, 19, 26; July 3, 10, 17, 24, 31; Aug. 7, 14. 7:30-11 a.m., donations accepted, reservations required, guide ornithologist R. Rylander, 210-868-7304.

Corpus Christi/Lower Gulf Coast

GCCA-CPL Marine Development Center Birding and Hatchery Tour with Slide Show - June 11; July 9; Aug. 13. Guided nature walk around hatchery ponds, tour of facility and hatchery slide show. 9-11 a.m., reservations required, guide hatchery manager T. Engeling, 512-939-7784.



Dallas/Pineywoods

Caddo Lake SP & WMA Birdwatching Tour - June 4; July 9, 23; Aug. 6, 20. 10 a.m.-noon, reservations available but not required, guides from N.E. Texas Ornithologists, 903-884-3833.

Fairfield Lake SP Talkin' Turkey - July 2. A slide presentation will be given concerning the eastern wild turkey. A demonstration of turkey calling will be given by park superintendent. 8-9 p.m., reservations are available but not required, guides wildlife biologist K. M. Fleming and park superintendent D. Walsh, 903-389-4514.

Lake Tawakoni SNA Bird and Nature Tour - June 25; July 30. 10-2 p.m., reservations required, guide park volunteer M. Kinney, 903-425-2332.

Pat Mayse WMA Birdwatching - July 9. 1-3 p.m., reservations required, guide conservation specialist J. Thomas, 903-884-3833.

El Paso/Big Bend Country

Balmorhea SP & Phantom Cave Springs Bird Tour - June 11, 25; July 9, 23; Aug. 20, 27. Bird the grounds and springs of Balmorhea State Park and then TPWD van will carry participants 7 miles to Phantom Cave Springs for 2 more hours of birding and exploring. 9 a.m.-noon, additional fee of \$5 for passport holders and \$7 for non passport holders, reservations are required, guide park ranger T. Johnson, 915-375-2370.

Houston/Upper Gulf Coast

J.D. Murphree WMA Colonial Waterbird Tour - June 5. Tour large colonial waterbird rookery during peak nesting while hatchlings and eggs are still in the nest. Great photo opportunity with 12 bird species present. 5 p.m.-dusk, reservations required, guide biologist J. Sutherlin, 409-736-2551.

Martin Dies, Jr. SP Roosting Waders - July 2. View Wading Bird Rookery on B.A. Steinhagen Lake. 6-8:30 p.m., additional fee of \$8 per person with TCP and \$33 per person without TCP, reservations required, guide conservation specialist C. Lena, 409-383-0144.

Rio Grande/Brush Country

James E. Daughtrey WMA Birdwatching - June 4. Birdwatchers will walk through compartment 6 of the wildlife management area along the shoreline on the upper end of Choke Canyon Lake where they will be in excellent nesting habitat for a wide variety of waterfowl as well as perching birds. Limited to 16 persons. 7 a.m.-noon, reservations required, guide conservation specialist T. Smith, 512-786-3868.



BATS

Austin/San Antonio/Hill Country

Devil's Sinkhole SNA Observation of Devil's Sinkhole and Brazilian Freetail Bat Flight - June 4, 18; July 9; Aug. 27. Need high clearance vehicle (no cars), insect repellent and drinking water. Limited to 20 people. Exact evening time will be established when reservations are made, reservations required, guide park manager D. Stuart, 210-563-2342.

Kickapoo Cavern SNA Bat Flight and Interpretation at Green Cave - June 2; July 21, 23; Aug. 18, 20, 25. Emergence of Brazilian Freetail Bats at dusk with interpretation by park naturalist. 6:30-9 p.m., reservations required, guide park manager D. Stuart, 210-563-2342.

Old Tunnel WMA Bat Emergence Tour - June, July & Aug. Every Thursday & Saturday, Bat Emergence viewing and site history. One hour before sunset, times vary throughout year so call for approximate time, reservations required, guide park superintendent R. Trippet, make reservations through Pedernales Falls state park 210-868-7304.



BIKING

Dallas/Pineywoods

Ray Roberts Lake SP/Isle du Bois Unit Mountain Bike Ride - June 11. Bring your mountain bike for a tour of the multi-use trails. Fairly strenuous, 7-8 miles ride. Bring a picnic lunch for after the ride. 9 a.m.-noon, donations accepted, reservations required, guides park superintendent J. Halford and park naturalist K. Matthews, 817-686-2148.

Amarillo/Lubbock/High Plains

Palo Duro Canyon SP Hills Sport Shop Bike Race - June 5. Participate in a fun race on the Capitol Peak Mountain Bike Trail. 1-5 p.m., \$5 park entrance fee for non-passport holders, guide K. Hill of Hills Sport Shop, 806-488-2227.

BUS TOURS

Austin/San Antonio/Hill Country

Bastrop SP Lost Pines Bus Tour - June 4, 18; July 2, 16, 30; Aug. 13, 27. A three hour tour of the Lost Pines area to include Bastrop and Buescher State Parks. The tour will interpret the natural and historic significance of the famous Lost Pines. Bring a sack lunch. 11-2 p.m., additional fee of \$10 adults, \$5 children 6-12 years old and under 6 for free, reservations required, guide park ranger M. Moncus, 512-321-2101.

El Paso/Big Bend Country

Big Bend Ranch SNA Big Bend Bus Tour - June 18; July 16; Aug. 20. Tour of Big Bend Ranch along the Rio Grande to geological, archeological, and historical sites. Lunch included. 8-5 p.m., additional fee of \$55 with passport \$60 without passport, reservations required, guide naturalist D. Alloway, 915-424-3327.

Big Bend Ranch SNA Big Bend Ranch Bus Tour of Fort Leaton - June 4; July 2; Aug. 6. Tour of Fort Leaton and Big Bend Ranch with stops at archeological and historic sites. Lunch provided. 8-5 p.m., additional fee of \$55 with passport and \$60 without passport, reservations are required, guide naturalist D. Alloway, 915-229-3613.

Big Bend Ranch SNA Big Bend Bus Tour - June 17. Tour of Big Bend Ranch along the Rio Grande to geological, archeological, and historical sites. Lunch included. 8-5 p.m., additional fee of \$70, reservations required, guide naturalist S. Richardson or R. Gibson, 915-424-3234.



STATE PARK STARGAZING

Austin/San Antonio/Hill Country

Guadalupe River SP Stargazing - July 16. Telescope viewing session will concentrate on the cosmos. The San Antonio Astronomical Association will answer questions about telescopes, star charts, and heavenly bodies. Starts one hour before sunset to 10 p.m., donations appreciated, guides from The San Antonio Astronomical Association, 210-438-2656.

El Paso/Big Bend Country

Big Spring SP Star Party Extravaganza - July 16. Bring a flashlight and binoculars to a stellar occasion at our upper picnic pavilion. View planets and constellations aided with several wonderful telescopes

focused for you by the West Texas Astronomy Club. This is a unique entertainment opportunity for the entire family that's fun and educational! 8:30 or dusk-10:30 p.m., guides from the West Texas Astronomy Club, 915-263-4931.

Fort Worth/Cattle Country

Cleburne SP Binocular Astronomy - July 23. Familiarize yourself with major constellations of the season, and specific stars and objects of interest with emphasis on binocular observation. Bring a blanket and binoculars. 8:30-10 p.m., reservations available but not required, guide astronomist M. Hibbs, 817-645-4215.

Continued on page 6



FISH STORIES

Austin/San Antonio/Hill Country

Heart of the Hills Research Station
Heart of the Hills Tour - June 4; July 2; Aug. 6. Tour will include a visit to a large and unique hill country spring and a walking tour through the department's only fisheries research station. 10-2 p.m., reservations required, guide research director D. Luebke, 210-866-3356.

Dallas/Pineywoods

Fairfield Lake SP Redfish, An Inland Oddity - June 11. The inland redfish stocking program will be described along with recommendation on how to catch redfish at Fairfield Lake. 8-10 p.m., guide biologist R. Ott, 903-389-4514.

Fairfield Lake SP When the Fish Don't Bite....Bowfish - Aug. 13. Learn the fundamentals of bowfishing along with an overview of the species that can be sought at this site. 7-9 p.m., guide conservation specialist D. Walsh, 903-389-4514.

Ray Roberts Lake SP/Isle du Bois Unit Seining Demonstration - June 16. Seining technique will be demonstrated by biologists and participants will then use seine to make collection. Collection will then be identified by biologists. Participants will need to wear old shoes and cutoffs. 9:30-11:30 a.m., reservations required, guide biologist B. Hysmith, 817-686-2148.

Ray Roberts Lake SP/Isle du Bois Unit Fisheries Survey Techniques - June 16. Electrofishing boat, gill net, and frame net will be displayed and use of each explained. 1:30-3 p.m., reservations are required, guide biologist B. Hysmith, 817-686-2148.

Fort Worth/Cattle Country

Lake Mineral Wells SP Seining Demonstration - July 7. Seining technique will be demonstrated by biologists and participants will then use seine to make collection. Collection will then be identified by biologists. Participants will need to wear old shoes and cutoffs. 9:30-11:30 a.m., reservations are required, guide biologists B. Hysmith, 817-328-1171.

Lake Mineral Wells SP Fisheries Survey Techniques - July 7. Electrofishing boat, gill net, and frame net will be displayed and use of each explained. 1:30-3 p.m., reservations are required, guide biologist B. Hysmith, 817-328-1171.

Houston/Upper Gulf Coast

Martin Dies, Jr. SP Trot and Drop June 25. Learn to build your own trotlines for catfishing that will last almost a lifetime. 9 a.m.-noon, additional fee of \$2 per person, reservations are required, guide conservation specialist C. Lena, 409-383-0144.

Know before you go!

Texas Conservation Passports are for adults, age 17 and older. Children and young adults do not need to have a Conservation Passport and are not eligible for Passport discounts.

- Some of these activities require one Conservation Passport per person age 17 and over.
- Some activities require **reservations**.
- Most activities have a **limit on group size**.
- For **reservations** and information, call the phone number listed with the activity.
- For WMAs, the best time to catch the biologist in the office is on a weekday between 8 to 9 a.m. and 12 to 1 p.m.
- Call WMAs before going to visit to make sure you can have access.
- See Drive Across Texas, Page 10-12, for directions to activities.
- Abbreviations:

SP = State Park
SFH = State Fish Hatchery
SHP = State Historical Park
SNA = State Natural Area
WMA = Wildlife Management Area
TPWD = Texas Parks & Wildlife Department



HORSE RIDES

Austin/San Antonio/Hill Country

Hill Country SNA Horseback Tour of Hill Country SNA - June 12; July 10; Aug. 14. Guided horseback tour of park focusing on natural and cultural aspects of park. Horse and lunch provided. 8:30-12:30 p.m., \$38.50 plus tax for TCP holders, \$40.50 plus tax and \$1 park fee for non-TCP holders, reservations required and must be made through Running R' Ranch at 210-796-3984, guide conservation specialist S. Heavey from Hill Country SNA.

Amarillo/Lubbock/High Plains

Palo Duro Canyon SP Ride the Horse Trails with the Randall County Sheriff's Posse - June 18; July 23; Aug. 13. Enjoy the beauty of Palo Duro Canyon the way the early settlers did - from horseback. Ride the trails, enjoy the wildlife and the panoramic beauty of the Canyon. Bring your own horse. Rental horses will not be available for these trail rides. 9 a.m.-noon, free to TCP holders all others \$5 per vehicle, reservations are required, guide M. Wilson, 806-488-2227.

HANDS - ON HISTORY

Austin/San Antonio/Hill Country

Landmark Inn SHP Marbleized Painting, a Historic Skills Development Class - July 9-10. Marbleizing is a historic painting technique used to make low-cost wood look like more expensive stone or marble. It created a faux finish but a fashionable look to furniture, doors and mantles in historic homes. Participants should bring a small piece of furniture that has already been stripped, sanded and prepared for painting. The class will apply a base-coat on July 9 and a marbleized finish on July 10. Bring scrap wood for a testing surface. Class will also cover stenciling techniques and graining. Stay overnight at the Inn or in Castroville. 1-5 p.m. on Saturday and 9 a.m.-noon on Sunday, \$35 for passport holders and \$50 for non-passport holders, reservations and deposit required, class is limited to 20 participants, guide conservation specialist J. Secrist, 210-538-2133.

PHOTOGRAPHY

Dallas/Pineywoods

Caddo Lake SP & WMA Photography Seminar - June 18. Photography seminar for beginners to intermediate. 1-3 p.m., reservations required, guide photographer J. Prichard, 903-884-3833.

Caddo Lake SP & WMA Photography Tour on Caddo Lake - June 4. Photography tour on Caddo Lake by boat. 7-11 a.m., additional fee of \$25, reservations required, guide naturalist D. Lomax, 903-679-3743.

Fort Worth/Cattle Country

Abilene SP Photo Contest - June 1. TCP holders can submit photographs to park headquarters by 5:00 p.m. June 30, 1994. The photo must have been taken in Abilene State Park. A panel will judge the photos: 1st, 2nd, & 3rd place. Photos will be displayed in park headquarters from July 4 through August 31, 1994, 915-572-3204.

Dallas/Pineywoods

Cedar Hill SP Penn Farm Agricultural History Center - June 18; July 16; Aug. 20. Update of restoration and history of Penn Farm. 9 a.m.-noon, reservations available but not required, guide park ranger, 214-291-3900.

Eisenhower SP Indian Heritage Program - July 23. The Takes Horse family will present an evening of history, legends and native dance of the Choctaw, Chickasaw, Crow, and Chippewa nation. Bring a lawn chair and enjoy the evening, 7:30-9 p.m., reservations are required, guide park volunteers William and Gwen Takes Horse, 903-465-1956.

Fort Worth/Cattle Country

Cleburne SP Traditional Cowboy Music Concert - Aug. 20. Go back in time to the days of the old west and enjoy music and poetry in the style of an old prairie minstrel...a cowboy and his guitar. Lawn chairs may be needed. 8-10 p.m., TCP or suggested donation of \$5 per person or \$10 per family, reservations available but not required, guide cowboy singer and guitarist S. Schick, 817-645-4215.

RECREATION AND HOBBIES

El Paso/Big Bend Country

Big Spring SP Comanche Warrior Triathlon - July 31. Swim in our local lake, run the Big Spring state park "Scenic Mountain Trail" and bicycle through the gorgeous trans-pecos scenery of the area. 7:30-12:30 p.m., \$30 fee TCP is not required, Big Spring Chamber of Commerce will administrate the event, 915-263-7641.

Houston/Upper Gulf Coast

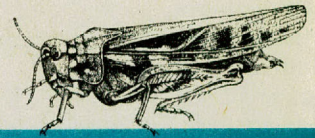
Martin Dies, Jr. SP Lena's Believe It or Not! - July 23. Campfire story telling and hot dog cook out. Starts at 8 p.m., additional fee of \$2 per person, reservations required, guide E. Shirley, 409-383-0144.



WILDLIFE

Dallas/Pineywoods

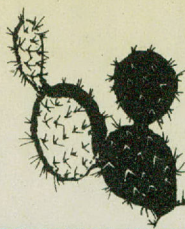
Eisenhower SP Calling all Predators - June 4, 11, 18, 25. Observe animals of the night by using animal calls! Starts at 8 p.m., reservations are required, guide park host B. Sisemore, 903-465-1956.



YOUTH CAMP

Dallas/Pineywoods

- Eisenhower SP** Nature Camp 1994
- July 18-21. Nature Camp is for youth ages 9-12 years old who will participate in hands on learning experiences. 9-11:30 a.m., additional fee of \$15 per student, limited to 25 participants, reservations are required, 903-465-1956.
 - July 18, Fossils at Eisenhower: R.C. Hamon and other members of the Central Texas Paleontological Society will present the program.
 - July 19, Birds of Prey: Cindy Blanton, educator and licensed bird rehabilitator with the Heard Natural Science Museum & Wildlife Sanctuary will present an informative program, with some special guests.
 - July 20, Leapin' Lizards and Other Cold Facts: Dr. John Partin, instructor at Grayson County Jr. College will lead the class in a study of reptiles.
 - July 21, Junior Ranger Project, Fish Seining & Cookout: An area of the park will be cleaned of litter and brush. Each participant will earn their junior ranger patch. Biologist Bruce Hysmith and staff will lead the group in a fish seining activity. We will then go to the picnic area for a cookout.
- Continued on page 8*



E C O T O U R I S M

MARINE & AQUATIC ECOSYSTEMS

Austin/San Antonio/Hill Country

Guadalupe River SP River Hydrographics - June 11. A great get wet activity. Hydrography of the Guadalupe River is the geography, geology and hydrology of the area. Bring your mask and snorkel for a fish eye tour after a dry land based introduction. 1:30-4 p.m., donations appreciated, guide A. Furlow from Abyss Dives, 210-438-2656.

Dallas/Pineywoods

Caddo Lake SP & WMA Ecosystem Boat Tour - June 11, 25; July 2, 30; Aug. 13, 27. 1-3 p.m., additional fee, reservations required, guide naturalist D. Lomax, 903-679-3743.

IN BALANCE WITH NATURE

Austin/San Antonio/Hill Country

Honey Creek SNA Jelly Cooking with Native Plants - Aug. 27. Learn how to make jelly from Cactus fruits (tunas). Participants will start with raw fruit and finish with great jelly! All supplies will be provided. Each person should go home with 4 pints of jelly. 10:30-2 p.m., additional fee of \$10, reservations required, guide naturalist P. Solis, 210-438-2656.

Honey Creek SNA Jelly Cooking with Native Plants - July 30. Learn how to make jelly from native mustang grapes. Participants will start with raw fruit and finish with great jelly! All supplies will be provided. Each person should go home with 4 pints of jelly. 10:30-2 p.m., additional fee of \$10, reservations required, guide naturalist P. Solis, 210-438-2656.

Landmark Inn SHP Natural Insect Repellents For Pets, People and Plants - June 11. Connie Moore,

expert herbalist, lecturer, co-author of *Natural Insect Repellents For Pets, People and Plants* will present a workshop on using and growing herbs and other natural means to repel insects. The first part of the workshop will cover repellents and their usage; the second part, growing the herbs which repel insects. 1-4:30 p.m., \$30 for passport holders and \$35 for non-passport holders, pre-registration suggested, contact June Secrist for information and registration at 210-931-2133.

Landmark Inn SHP The Natural Approach to Landscape Design and Management - Aug. 13-14. Interested in organic gardening techniques? Al Billings, managing horticulturist of TexasScapes will show you ways to integrate organic resource management in your own yard. Al has worked for 15 years in the field of natural landscape management. This program will be a creative presentation on the art of landscaping and organic maintenance. 1-5 p.m. on Saturday and 9 a.m.-noon on Sunday, \$25 for passport holders and \$35 for non-passport holders, reservations required, 210-538-2133.

Houston/Upper Gulf Coast

Martin Dies, Jr. SP The Lows vs. The Highs - Aug. 6. Get acquainted with methods of low-impact camping that help you leave campsites fresh for critters and other campers after your gone. 9-11 a.m., additional fee of \$2 per person, reservations required, guide from boyscout troupe 932, 409-383-0144.

RUGGED ECOTOURS

Austin/San Antonio/Hill Country

Colorado Bend SP Wild Cave Tours - June, July & Aug. Every Saturday and Sunday, Discover what speleologists (cavers) experience while exploring the underground world. The crawling tour takes you through several

relatively small and progressively more difficult caves. The walking tour takes you to Gorman Cave. Wear old clothes, comfortable shoes and bring a flashlight. Equipment suggested for crawling tours: strap-on headlight, knee pads and elbow pads. Starts 9:15 a.m. Saturdays and Sundays for Walking Tours and 1:30 p.m. Saturdays for Crawling Tours, resource and weather permitting, \$8 per person for walking tour and \$15 per person for crawling tour, reservations required maximum 10 people per tour, guide E. Young of the Texas Speleologists Association, 915-628-3240.

Kickapoo Cavern SNA Primitive Tour of Kickapoo Cavern - July 21, 23; Aug. 20. Undeveloped hill country cave tour. Participants need to be in relatively good physical condition, bring flashlight, drinking water and shoes designed for rough terrain. 4-6 p.m., reservations required, guide park manager D. Stuart, 210-563-2342.

Amarillo/Lubbock/High Plains

Caprock Canyons SP Canyon Rumbles - June 25; July 23; Aug. 20. Too hot to walk? Catch a ride with park staff in our 4WD open air vehicle to view the park as staff inspects hiking trails. This will be a true 4WD adventure. 1-4 p.m., additional fee of \$2 per person, reservations required, guide conservation specialist R. Sargent, 806-455-1492.

ECOTOUR OUTINGS FOR WALKERS & HIKERS

Austin/San Antonio/Hill Country

Colorado Bend SP Gorman Falls Tour - June, July & Aug. Every Saturday and Sunday, Caravan from park headquarters to the Gorman area of the park and then hike to below the falls. From trail head, it's a

one and one-half mile round-trip over beautiful hill country terrain. Substantial footwear with rubber soles is recommended. No pets allowed on tour. No restrooms or drinking water available in Gorman Falls area. 10-2 p.m. Saturdays and 10 a.m. on Sundays weather permitting, \$2 per adult, \$1 for children 6 through 12 years old, under 6 years old free, activity fee may apply and entrance fee for non-TCP holders, guides B. Paddie and J. Taylor, 915-628-3240.

Honey Creek SNA Aquatic Ecology Tour - June 4. Learn about water resources and the biology of aquatic systems of Honey Creek with the help of James White. Easy one mile trail walk. 9-11 a.m., TCP or suggested donation of \$5 per person or \$8 per family appreciated, guide Master of Science with emphasis in Plant Ecology J. White, 210-438-2656.

Honey Creek SNA Lower Edwards Plateau Ecosystem Tour - June, July & Aug. Every Saturday, Two mile guided walk with an interpretation of cultural and biological history of Hill Country SNA. 9-11:30 a.m., TCP or suggested donation of \$5 per person or \$8 per family appreciated, guide park naturalist P. Solis, 210-438-2656.

Honey Creek SNA Honey Creek Geology Tour - June 25. Learn about the geology of Honey Creek State Natural Area on this two mile trail walk. Visit the unique basalt dike of Honey Creek canyon. 9-11:30 a.m., TCP or suggested donation of \$5 per person or \$8 per family appreciated, guide geologist and research scientist at UT Austin C. Caran, 210-438-2656.

Honey Creek SNA Native Plant Tour - Aug. 6. Two mile trail walk with emphasis on plants, their cultural uses for food, fiber, medicines, etc. 9-11 a.m., TCP or suggested donation of \$5 per person or \$8 per family appreciated, guide naturalist P. Solis, 210-438-2656.

Honey Creek SNA Insect Identification - June 18. Bug man, Dan Sundberg will lead a trail walk to identify insects with special emphasis on beetles. 9 a.m.-noon, TCP or suggested donation of \$5 per person or \$8 per family appreciated, guide entomologist D. Sundberg, 210-438-2656.

Pedernales Falls SP Nature Walk - June 4, 11, 18, 25; July 2, 9, 16, 23, 30; Aug. 6, 13, 20, 27. 10-11:30 a.m., reservations available but not required, guide naturalist R. Rylander, 210-868-7304.

Corpus Christi/Lower Gulf Coast

Las Palomas WMA Explore Las Palomas WMA & The Lower Rio Grande Valley Unit - June 8; July 6; Aug. 10. Meet at Bentsen State Park for the tour. 7-4 p.m., guide area manager B. Loya, 210-585-1107.

Dallas/Pineywoods

Caddo Lake SP & WMA Nature Walk - July 16. 1-3 p.m., reservations available but not required, guide conservation specialist T. Prichard, 903-884-3833.

Caddo Grasslands WMA Nature Tour - Aug. 6. 1-3 p.m., reservations required, guide conservation specialist J. Thomas, 903-884-3833.

Fairfield Lake SP The Nature of Fire - June 18. The effect of fire on the natural environment will be explored and the use of fire as a conservation tool will be discussed. 8-10 p.m., guide conservation specialist K. Blair, 903-389-4514.

Fairfield Lake SP The Deer of Fairfield Lake - July 3. A wildlife biologist will discuss displayed deer information and conduct a short walking tour in park. A slide program will then be presented concerning the deer population problem on the park. 7-9 p.m., reservations are available but not required, guide wildlife biologist K. M. Fleming, 903-389-4514.

Ray Roberts Lake SP/Isle du Bois Unit Twilight Nature Hike - July 23; Aug. 20. Explore the trails of Isle du Bois as the local wildlife populations are preparing for their most active time of the day - night! A two mile trail hike. Bring drinking water, comfortable footwear and perhaps a flashlight. 8-10 p.m., reservations are available but not required, guide park naturalist K. Matthews, 817-686-2148.

El Paso/Big Bend Country

Big Spring SP Nature Walks and Sunset Tales - June & July every Saturday except July 2. Meet at the upper picnic pavilion/playground and take a nature walk to discover century old rock carvings on "Scenic Mountain." Learn about local flora and fauna. Hear tales of treasure, cowboys, Indians, hauntings and MORE!! Watch the sun set off the top of the bluff while being entertained by a storyteller. 8-9:45 p.m., guide park

manager R. Alton and storytelling by Heritage Museum curator A. Way, 915-263-4931.

Fort Worth/Cattle Country

Abilene SP Nature Trail Tour - June 4, 11, 18, 25. Starts at 9 a.m., reservations available but not required, guide park staff, 915-572-3204.

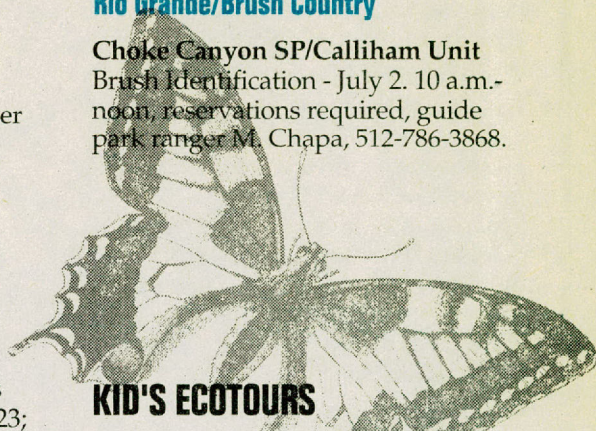
Lake Arrowhead SP Plant Walk - Aug. 20. Talk about local plants and trail walk to identify plants. 10 a.m.-noon, guide U.S. agronomist T. Hunter, 817-528-2211.

Amarillo/Lubbock/High Plains

Lubbock Lake Landmark SHP Flora and Fauna of the Southern Plains - June 1. Guided tour through relevant areas along the park's four mile nature trail. 6-7:30 p.m., reservations required, guide biologist G. T. Miller, 806-765-0737.

Rio Grande/Brush Country

Choke Canyon SP/Calliham Unit Brush Identification - July 2. 10 a.m.-noon, reservations required, guide park ranger M. Chapa, 512-786-3868.



KID'S ECOTOURS

Austin/San Antonio/Hill Country

Honey Creek SNA Children's Nature Activity - July 23. Easy walk down to Honey Creek with stops along the way to look at plants and bugs. Expect wet feet at the creek! 9-11 a.m., TCP or suggested donation of \$5 per person or \$8 per family appreciated, guide naturalist P. Solis, 210-438-2656.

Rio Grande/Brush Country

Choke Canyon SP/Calliham Unit Wildlife Track Identification - June 18; July 16; Aug. 6. Children ages 6 to 12 will walk along the shoreline of Choke Canyon Lake and identify a variety of wildlife tracks. They will also learn the art of print taking with plaster of paris. There will be a limit of 12 children per session. 9-11 a.m., reservations required, guide conservation specialist T. Smith, 512-786-3868.

AUSTIN / SAN ANTONIO / HILL COUNTRY

Bastrop SP In Bastrop County, 32 miles east of Austin and 1 mile east of Bastrop on Hwy. 21. 512-321-2101

Colorado Bend SP In Lampasas and San Saba Counties on the Colorado River, about 10 miles above Lake Buchanan, near the community of Bend. Bend is north of Llano via State Highway 16 or west of Lampasas via U.S. Highway 183/190. Paved access to Bend via R.R.s 501, 580 or 581. From Bend there are approximately 4 miles of unpaved road to the park entrance. 915-628-3240

Devil's Sinkhole SNA Closed to the public. Access by Texas Conservation Passport only. In northeastern Edwards County about 135 miles northwest of San Antonio; contact Kickapoo Cavern SNA for directions at. 210-563-2342

Granger WMA In Williamson County. From Taylor, take State Highway 95 north to Circleville and turn east on F.M. 1331 then approximately 6 miles to the Wilson Fox Park/Granger Dam road. Corps of Engineers headquarters has area maps (with registration boxes marked) at the north end of the dam road. 512-859-2668

Guadalupe River SP

In Kendall and Comal Counties, 30 miles north of San Antonio; on State Highway 46 between Boerne and U.S. Highway 281. 210-438-2656

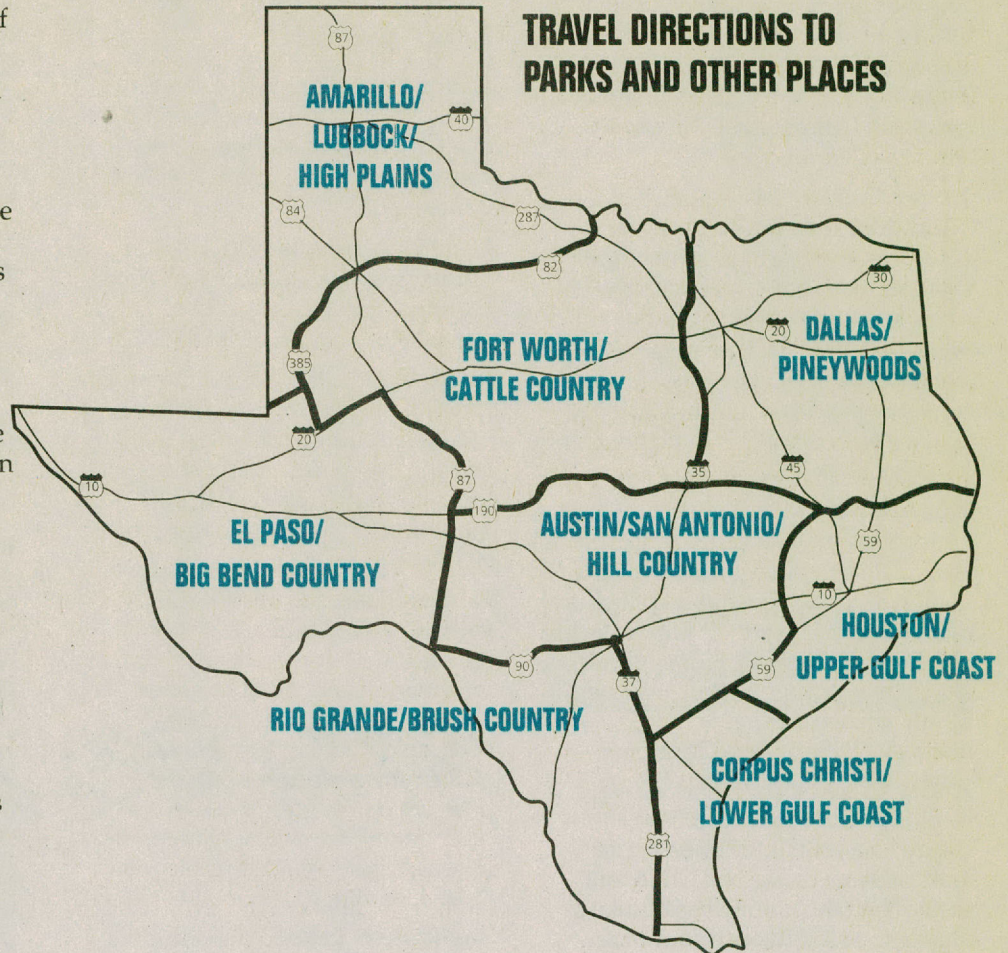
Heart of the Hills Research Station In Kerr County. From Kerrville, take Highway 27 to Ingram, go past Ingram to F.M. 479 and go 2 miles past the F.M. 479 intersection. Location is on the left side of Highway 27. 512-866-3356

Hill Country SNA In Bandera and Medina Counties, 10 miles southwest of Bandera. From Bandera, take State Highway 173 south a 1/4 mile to R.R. 1077 (also marked as "Dixie Dude R.R."); go 10 miles to the park entrance, the last 1.5 mile stretch is not paved. 210-796_4413 (park is closed Tuesdays and Wednesdays)

Honey Creek SNA Access through Guadalupe River State Park, see above. 210-438-2656

DRIVE ACROSS TEXAS

TRAVEL DIRECTIONS TO PARKS AND OTHER PLACES



Kickapoo Cavern SNA Access by Texas Conservation Passport only. Everyone over 17 years of age or older required to have a Passport. In Edwards and Kinney Counties, 40 miles west of Uvalde on U.S. Highway 90, then 22.5 miles due north of Bracketville on R.R. 674; park entrance is on west side of road. 210-563-2342

Landmark Inn SHP In Castroville on U.S. Highway 90 about 25 miles west of San Antonio. 210-538-2133

Longhorn Cavern SP In Burnet County, about 5 miles south of Burnet on U.S. Highway 281. 512-756-4680

McKinney Falls SP In Travis County, 13 miles southeast of the State Capitol. Take U.S. Highway 183 south to Scenic Loop Road, turn onto Scenic Loop and go 2 miles to the park entrance. 512-243-1643

Old Tunnel WMA In Kendall County, 14 miles south of Fredericksburg. From Fredericksburg take U.S. Highway 290 east to F.M. 1376 (KOA). Turn south and go about 5 miles, turn right on Grapetown Road and go about 6 miles to T, turn left and go about 3.5 miles to the WMA (on left side of road). 210-868-7304

Pedernales Falls SP In eastern Blanco County, 9 miles east of Johnson City on F.M. 2766; or, about 32 miles west of Austin off U.S. Highway 290, then north on F.M. 3232 for 7 miles. 210-868-7304

Walter Buck WMA In Kimble County, on the South Fork of the Llano River. Take State Highway 377 south of Junction, the WMA entrance is 3 miles past the city limits sign. 915-446-3994

CORPUS CHRISTI / LOWER GULF COAST

GCCA/CPL Marine Development Center In Corpus Christi. From I.H. 37 take South Padre Island Drive Exit (Highway 358) to Waldron Road and turn right. Drive 4 to 5 miles until road dead ends. Stop at gate. 512-939-7784

Matagorda Island SP In Calhoun County, about 50 miles southeast of Victoria; park headquarters, dock and information center at Port O'Connor. 512-983-2215

Welder Flats Coastal Preserve In Calhoun County at the junction of the Victoria Barge Canal with the Gulf Intracoastal Waterway. Boat access only. 512-576-0022

HOUSTON / UPPER GULF COAST

Atkinson Island WMA Off Morgan's Point on the Houston Ship Channel; accessed by boat only. 409-736-2551

Candy Cain Abshier WMA In far southwestern Chambers County at Smith Point; from I.H. 10, take State Highway 61 south; turn south again on F.M. 562, go to Smith Point. 409-736-2551

J.D. Murphree WMA In Jefferson County, on southwestern city limits of Port Arthur; Off State Highway 73 near the Taylor Bayou Bridge. Look for brown highway sign. 409-736-2551

Lower Neches WMA/Old River Unit In Orange County, on southeastern city limits of Bridge City; off Old Ferry Road, surrounding Bailey's Fish Camp. 409-736-2551

Martin Dies Jr., SP/Angelina Neches/Dam-B In Jasper County, between Woodville and Jasper on U.S. Highway 190. 409-384-5231

Sea Rim SP Located on State Highway 87 in the extreme southeast corner of the Texas coast near Louisiana; southwest of Port Arthur and northeast of Galveston via Port Bolivar Ferry. 409-971-2559

DALLAS / PINEYWOODS

Caddo Grasslands WMA In Fannin County, 15 miles north of Honey Grove, off F.M. 100. 903-884-3833

Caddo Lake SP/WMA In Harrison County, 15 miles northeast of Marshall. Take State Highway 43 north to F.M. 2198, turn east and travel about 3/4 mile to P.R. 2. 903-679-3351

Cedar Hill SP/Penn Farm Agricultural History Center In the southwest corner of Dallas County about 15 miles southwest of Dallas. The park is 2 miles west of Cedar Hill and is accessible via F.M. 1382. 214-291-3900

Eisenhower SP In northern Grayson County, 5 miles northwest of Denison. Take U.S. Highway 75A north to F.M. 1310, turn northwest and travel about 2 miles to P.R. 20. 903-465-1956

EL PASO / BIG BEND COUNTRY

Balmorhea SP In Reeves County, 4 miles west of Balmorhea on Texas Highway 17. 915-375-2370

Barton Warnock Environmental Education Center Located in Lajitas. Part of the Big Bend Ranch SNA. 915-424-3327

Big Bend Ranch SNA In Brewster and Presidio Counties, north of Lajitas on F.M. 170. 915-424-3327

Big Spring SP In Howard County, 36 miles east of Midland, or 100 miles east of Abilene. From Midland, take Interstate 20 east to Big Spring, take Business 20 exit eastbound, turn right onto F.M. 700, park is located on the right. 915-263-4931

Davis Mountains SP In Jeff Davis County, about 4 miles northwest of Fort Davis, via State Highway 118. 915-426-3337

Devils River SNA In Val Verde County, about 45 miles north of Del Rio and 22 miles off U.S. Highway 277. 210-395-2133

Fairfield Lake SP In eastern Freestone County near Fairfield; from I.H. 45 take U.S. Highway 84 east to F.M. 488, go north to F.M. 2570 then go east to P.R.64. 903-389-4514

Gus Engeling WMA In Anderson County, 21 miles northwest of Palestine; or 38 miles southeast of Corsicana on U.S. Highway 287. 903-928-2251

Lake Tawakoni SP In Hunt County east of Dallas. From the end of F.M. 2475 to White Deer Landing Road to park entrance. 903-425-2332

Pat Mayse WMA In northwestern Lamar County, approximately 12 miles northwest of Paris, on F.M. 79 north off Loop 286. 903-884-3833

Ray Roberts Lake SP/Isle Du Bois Unit In Denton County, on F.M. 455 between Pilot Point and Sanger, two miles east of the Ray Roberts Lake dam. 817-686-2148

FORT WORTH / CATTLE COUNTRY

Abilene SP In Taylor County 16 miles southwest of Abilene off F.M. 89. 915-572-3204

Cleburne SP In Johnson County. From Cleburne take Highway 67 west for approximately 4 miles, turn on Park Road 21 for 6 miles. 817-645-4215

Fossil Rim Wildlife Center In Somervell County 60 miles southwest of the Dallas/Fort Worth metroplex. Just off Highway 67, approximately 3 miles southwest of Glen Rose. Turn south onto County Road 2008 at the Fossil Rim sign. Go 2 miles to the stonework entrance on the right.

Lake Arrowhead SP Located about 20 miles southeast of Wichita Falls. From Highway 281, take F.M. 1954 OR 8 miles from Highway 287, take F.M. 2393 south for 8 miles. 817-528-2211

Lake Mineral Wells SP In Parker County, about 3 miles east of Mineral Wells (14 miles west of Weatherford) on U.S. Highway 180. 817-328-1171

Continued on page 12



Camping Reservations

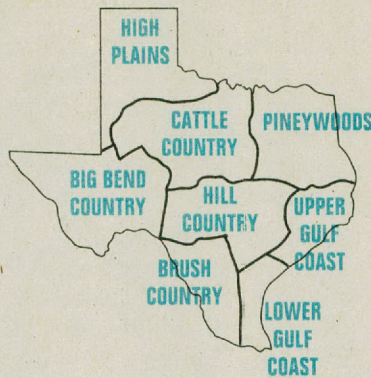
OOPS!

So many phone calls... so little time! When the new camping reservation system went 'on-line' there were so many phone calls that the phone lines jammed. Best days to reach us? Tuesday, Wednesday, Thursday, and Friday...any weekday but Monday! We are sincerely sorry for your inconvenience. We are fixing things as fast as we can and if we get jammed up again, we will extend our working hours just so we don't miss your call.

The camping reservation phone number is
1-512-389-8900

DRIVE ACROSS TEXAS

Continued from page 11



AMARILLO /LUBBOCK / HIGH PLAINS

Caprock Canyons SP In southeastern Briscoe County near Quitaque. The park is bordered on the north by State Highway 256, the entrance is on the south and accessible to Quitaque on R.R. 1065. 806-455-1492

Lubbock Lake Landmark SHP Located on the northwest edge of the City of Lubbock near the intersection of Loop 289 and Clovis Road (U.S. 84). 806-765-0737

Palo Duro Canyon SP In Randall County, 12 miles east of Canyon on State Highway 217. From Amarillo, it is south on Ranch Road 1541 and then 8 miles east on State Highway 217. 806-488-2227

RIO GRANDE / BRUSH COUNTRY

Chaparral WMA In LaSalle and Dimmit Counties, 8 miles west of Artesia Wells on F.M. 133. 210-676-3413

Choke Canyon SP/Calliham Unit In McMullen and Live Oak counties, about 70 miles south of San Antonio. On the north side of Highway 72, about 8 miles west of Three Rivers. 512-786-3868

James E. Daughtrey WMA In Live Oak and McMullen Counties on the north side of State Highway 72 between Three Rivers and Tilden. The check station is accessed via F.M. 16 north of Tilden 3 miles to F.M. 3445, then 5.5 miles east to the main entrance on the right. 512-274-3573

Las Palomas WMA

•**Lower Rio Grande Valley Units** Twelve tracts located in Cameron, Hidalgo, Starr and Willacy Counties. 210-383-982

•**Penitas Unit** In southeastern Hidalgo County, 8 miles west of Mission and 2 miles southeast of LaJoya on the Old Military Road. 210-585-1107

Here's a Texas adventure - Cynthia Grant landed her aeroplane on our runway - left her passport on the dash! Pam Jones, Park Clerk Lake Whitney SP



SCHEDULE YOUR OWN OUTINGS

Atkinson Island WMA
Unvegetated beach areas. No facilities. 409-736-2551

Big Bend Ranch SNA Conservation Passport required north of Highway 170 where hiking and backpacking are available. South of Highway 170, either the Conservation Passport or the daily entrance fee is acceptable. For information call the **Barton Warnock Environmental Education Center**. 915-424-3327

Candy Cain Abshier WMA Area primarily for bird watching and nature study. No facilities. 409-736-2551

Colorado Bend SP Wildlife viewing at baited area, predawn to noon or until dusk if others not waiting to use the blinds, additional fee, reservations available but not required, limited number of blinds make it necessary to only accept reservations in person at park headquarters, \$2 per person activity fee. 915-628-3240

Davis Mountains SP Experience back country hiking in the Davis Mountains, 8-10 mile trail climbs to a spectacular overlook with a 360 panorama, reservations not required. 915-426-3337

Devils River SNA Guided tour of archaeological pictograph sites and natural sites upon request, Fridays-Sundays, groups encouraged, primitive camping and bunkhouse lodging for 10 people and kitchen available. 210-395-2133

Granger WMA Approximately 35 miles of trails crisscross the Blackland Prairie accessible by entering at TPWD registration boxes 1-9 around Granger Lake. Tall prairie grasses, fishing, and birding (see if you can spot a Ring-necked Pheasant) await the adventurous hiker. Pick up area maps at Corps of Engineers headquarters at the dam. 512-859-2668

Gus Engeling WMA Two interpretive walking nature trails. One driving wildlife demonstration tour is open throughout the year except during special permitted gun hunts. 903-928-2251

Kickapoo Cavern SNA Bird watching and nature tours upon request, primitive cavern tour by special arrangement, groups encouraged, bunkhouse lodging for 14 people and kitchen available, please make reservations at least one week in advance. 210-563-2342

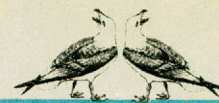
Richland Creek WMA Six miles of driving and walking trails open except during special permitted gun hunts. Observe wading birds from shallow-water marsh compartments on the 4000-acre north unit. Between April and August there are no established facilities. Call for travel directions. 903-928-2251

Las Palomas WMA/Lower Rio Grande Valley Units Units of Las Palomas open for birding or wildlife viewing on your own **September 1 - April 30** are: Adams, Anacua, Baird, Carricitos, Champion, Longoria (west side only), Penitas and Taormina. No facilities. 210-383-8982

Lower Neches WMA/Bessie Heights Unit Accessible by boat only. No facilities. 409-736-2551

Walter Buck WMA Activities coordinated through South Llano River SP. 915-446-3994

Welder Flats Coastal Preserve This area is entirely submerged land, so access is by boat. ALL shoreline area is privately owned and is NOT part of the preserve. Please do not trespass on private land and do not disturb the whooping cranes. 512-576-0022



Call ahead before visiting a Wildlife Management Area! We don't want to miss you and we often leave our gates locked. Come visit us for our special events or on your own but let us open the doors first! The best time to catch a biologist in an office is on a weekday early in the morning (8-9 a.m) or during lunch on-account-of we work outside!

TEXAS COUNTRY ★ REPORTER

**Your favorite state park is on TV!
Look for Texas Country Reporter
in your weekend TV listings.**

June

04/05 Matagorda Island
11/12 Dinosaur Valley
18/19 Caddo Lake
25/26 El Paso Parks:
Franklin Mnts.,
Magoffin Home,
Hueco Tanks

July

02/03 Landmark Inn
09/10 Lost Maples
16/17 LBJ
23/24 Brazos Bend
30/31 Lubbock Lake Landmark

August

06/07 Goliad
13/14 Caprock Canyon
20/21 Caddoan Mounds
27/28 Washington on the Brazos



KUDOS TO VIPs

NEW TRAILS AT CHAPARRAL WMA

Boy Scout volunteers planned and blazed three new trails in the Chaparral Wildlife Management Area. The Paisano Trail for autos is 8-1/2 miles long, the Arena Roja Nature Trail is wheel chair accessible and the Camino de Fiero Nature Management Trail is two miles long and best suited for hikers.

Kudos to Boy Scout Troup 150 of Cotulla; Senior Patrol Leader: Matthew Santos; Scouts: Tony Ayala, Billy Daniel, Uvaldo Garcia III, Chris Harrison, Jeremy Mann, Bobby Sackett, Robert Sanchez, Van Van Cleve. Adult volunteers: Lloyd Stephenson, Robert Adams, Bill Brummel, Beverly Brummel, and Jimmy Daniel.

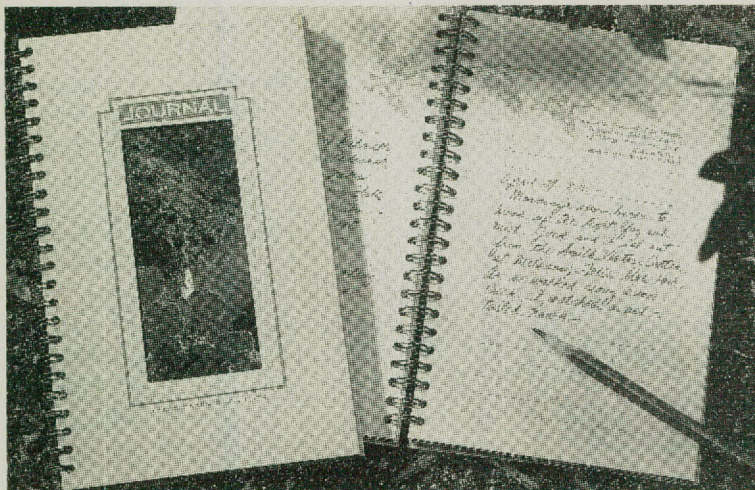
Rio Grande/Brush Country

Chaparral WMA Texas Horned Lizard and Tortoise Tour - June 4. One hour slide presentation followed by tour of nature trail for horned lizards and tortoises. 3 p.m.-sunset, reservations required, guide biologist J. Rutledge, 210-676-3413.



TEXAS PARKS AND WILDLIFE COLLECTION

Nature Lover's Outdoors Journal



Record your Passport Outings in this soft-cover journal with blank pages, lined for ease in writing, and filled with charming illustrations and quotes. Your field sketches and wildlife observations will be kept next to Rob Fleming's outdoor art and quotations from Texas naturalists such as Roy Bedichek and J. Frank Dobie. Proceeds are helping to protect and preserve our natural resources.

1010 \$8.95

TEXAS PARKS AND WILDLIFE

To order, or request our free catalog, please call:

1-800-580-5050

The Texas Conservation Passport Journal is your passport to the real Texas.

Texas Conservation Passports cost \$25 each and give you:

- this *Passport Journal*, published quarterly, with listings of adventures and explorations,
- free entry to Texas State Parks,
- a one-year discounted subscription rate to *Texas Parks & Wildlife* magazine,
- guided access to WMAs and other undeveloped lands.

We want to hear from you!

Please send your comments, complaints and suggestions to:

Texas Conservation Passport
c/o Marketing Branch
4200 Smith School Road
Austin, TX 78744
FAX 1-512-389-8029

For address changes, please send your mailing label and your new address to the address shown above.

If you would care to use any of our published information contact us. We are:

Emily Carter, Editor
Kim Hales, Events Editor
Dawn Dittman, Marketing Director
Linda Adkins, Creative Director
Linda Wells, Graphic Designer

© 1994 by the Texas Parks and Wildlife Department.

T-SHIRTS TO HELP FUND RESEARCH

At Black Gap WMA, the geographically isolated and genetically pure peregrine falcons are not reproducing as they should. And, we don't know why.

Research is required in order to answer many questionings that have been raised by this situation.

Bonnie McKinney, who has devoted nine years to studying the peregrines, is planning a new research project. But funding will have to come from nontraditional sources. In other words, Bonnie needs your help.

Your purchase of a "Peregrine Project" T-shirt, with its brilliant, full-color illustration of the peregrine in one of its amazing dives, will help make this research a reality. And, you'll know you've played a part in saving Texas' wild, independent and majestic peregrine falcon.

Your purchase of a "Peregrine Project" T-shirt, helps fund peregrine research through TPWD's Nongame Program.



100% cotton, white or natural, Hanes Beefy T® short-sleeve T-shirt, machine washable, full-color design

ORDER BLANK

Yes, I want to help and get a great-looking "Peregrine Project" T-shirt!

\$16.50 includes postage and handling (\$17.50 without a Passport membership).

Sizes available in S, M, L, XL. Satisfaction guaranteed.

For credit card orders, call toll free 24 hours: 1-800-441-7105



Card No. _____ Expiration Date _____

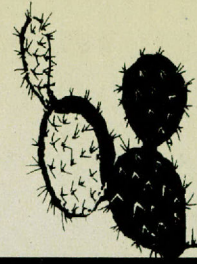
Texas Conservation Passport number to qualify for member discount: _____

Please send my order to: Name: _____

Address: _____ City _____ State _____ Zip _____

Item	Size	Color	Qty.	Price
Peregrine Project T-shirt				
TOTAL				\$
Postage & handling	is already included.			\$ 0.00
Dallas-area residents add 8.25% sales tax, all other Texas residents add 7.25% sales tax				\$
My check or money order is enclosed for:				\$

If ordering by mail, send check or money order, payable to:
MPS-Peregrine Project T-shirt, P.O. Box 561607, Dallas, TX 75356-9935
Please allow 2-3 weeks for delivery.



NATURE NOTES

Where did those West Texas sand dunes come from?

New Mexico!

Those million-year-old grains of sand came from rock in ancient New Mexico mountains. Rain, plant roots, heat, cold and wind eroded the rocks into large chunks, smaller chunks and finally sand that washed away into river beds. In the dry period following the last ice age, wind blew the sand from drying riverbeds toward Texas. The dunes at Monahans Sandhills SP are a small part of a 200-mile-wide field that is still in motion.

Monahans Sandhills State Park 915-943-2092

Located in far West Texas, in Ward County, six-miles northeast of the town of Monahans. The park is off of I.H. 20 on Park Road 41.



For information on purchasing a Texas Conservation Passport
call 1-800-792-1112
8 a.m.-5 p.m. Monday - Friday

Bill Reaves

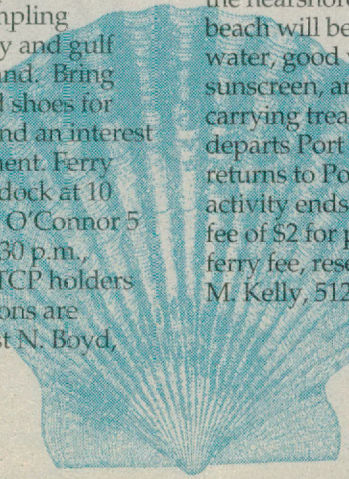


COMMON GREEN TURTLE (*Chelonia mydas*)— Sometimes seen nesting on Texas beaches, this ocean-dwelling turtle prefers shallow coastal waters where it feeds mainly on abundant marine plants.

Coastal Ecotours

Corpus Christi/Lower Gulf Coast

Matagorda Island SP & WMA Marine Ecosystems Tour - June 25; July 9, 17; Aug. 7, 27. The Marine Environment will be experienced through a variety of sampling methods on both the bay and gulf beach of Matagorda Island. Bring lunch, water, hard soled shoes for wading (tennis shoes) and an interest in the Marine Environment. Ferry departs Port O'Connor dock at 10 a.m. and returns to Port O'Connor 5 p.m. Activity ends at 3:30 p.m., additional fee of \$2 for TCP holders and ferry fare, reservations are required, guide biologist N. Boyd, 512-983-2215.



Matagorda Island SP & WMA Beachcombing & Shelling Tour - June 18; July 23. Beachcombing and shelling will be conducted on the Gulf of Mexico beach. The ecosystem of the nearshore and barrier island beach will be covered. Bring lunch, water, good walking shoes, sunscreen, and something for carrying treasures home. Ferry departs Port O'Connor 10 a.m. and returns to Port O'Connor 5 p.m., activity ends at 3:30 p.m., additional fee of \$2 for passport holders plus ferry fee, reservations required, guide M. Kelly, 512-983-2215.

4200 Smith School Road • Austin, TX 78744

TEXAS
CONSERVATION
PASSPORT
JOURNAL



Dispersal of the publication conforms with Texas State Documents Depository Law, and it is available at Texas State Publications Clearinghouse and/or Texas Depository Libraries.

PWD-BR-C2000-144-5/94