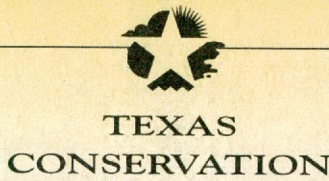


P400.6  
P268  
95/3-5

APR 21 1995

pl

Conservancy



# PASSPORT

Vol. 4 No. 1 • March 1995 - May 1995

JOURNAL

Your passport to the real Texas.

## BLACK GAP WILDLIFE MANAGEMENT AREA A TRIP TO BLACK GAP

Spotting peregrine falcon nests in the Rio Grande's Maravillas Canyon, takes time and patience. But, volunteers travel hundreds of miles to Marathon, push on another 58 miles to the Black Gap headquarters then trek into the Chihuahuan Desert 15 miles, all in the hope of spotting the endangered *Falco peregrinus anatum*. Last spring, 14 active eyries fledged five young falcons in the Trans-Pecos, and volunteers helped spot the one and only Black Gap eyrie. It produced only one fledgling, a female. Named Solo by nongame specialist, Bonnie McKinney, the critter flutter-glided away from the nesting cliff twice, to land in the brush along the river bank where fox, coyote and javelina hunt for food. The chick was hand captured and banded so she can be identified in the future. On July 11, 1994 Bonnie saw her again, almost fully-grown, dive bombing rock climbers attempting to retrieve egg-shell samples from the nest. Nice recovery Solo!



CHARLIE TALBERT

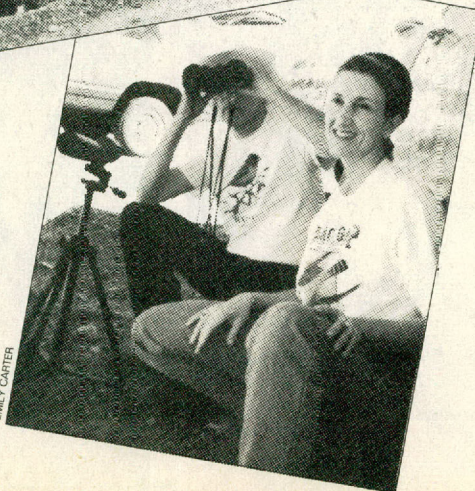
The smallest owls in the world, elf owls (*Micrathene whitneyi*), winter in Mexico and breed in the southwestern deserts of the United States. They are cavity nesters and depend on holes abandoned by ladderbacked woodpeckers for nesting habitat. An elf owl, caught at night in the photographer's flash, peers out of an old woodpecker hole.



REBECCAH BRADSHAW

### A Night With The Elves

Journey to the Black Gap and assist with data collection on elf owls during the 25th anniversary of Earth Day - April 22. Due to the controlled nature of the survey, and the overnight hours of observation (6 p.m. till dawn), the group size is limited to 10 current TCP members and reservations are required. Participants need a high-clearance vehicle for rough terrain, equipment and food for primitive camping, flashlights, water, binoculars, scopes, notebooks and jackets suitable for overnight in the desert. ♻️



EMILY CARTER

Intrepid volunteers venture into the wide open spaces of Black Gap WMA to survey the cliffs for peregrine falcons.

#### TEXAS PARKS AND WILDLIFE

##### Earth Day in the Parks...page 3

Joan Glass .....	2
Earth Day .....	3
Events .....	4-9, 13
Drive Across Texas .....	10-12
Passport Values .....	14
Schedule Your Own Outings .....	14
Fennessey Ranch Photo Workshops	15
Passport Explorations in México ...	16





"...people doing the work of conservation...park volunteers, park managers, wildlife and fisheries biologists, botanists, historians and restoration artists are the wind beneath the wings of the Texas Conservation Passport program..."

## RESOURCE PROTECTION

# JOAN GLASS

Contaminant Biologist

"Water pollution occurs due to high human populations, poor agriculture practices or intense industrial production," Joan said. "I respond to fish-kills and other forms of river contamination." When notified of an 'event,' Joan goes trolling in a boat, slowly searching a river bank for dead fish and causes of toxins.

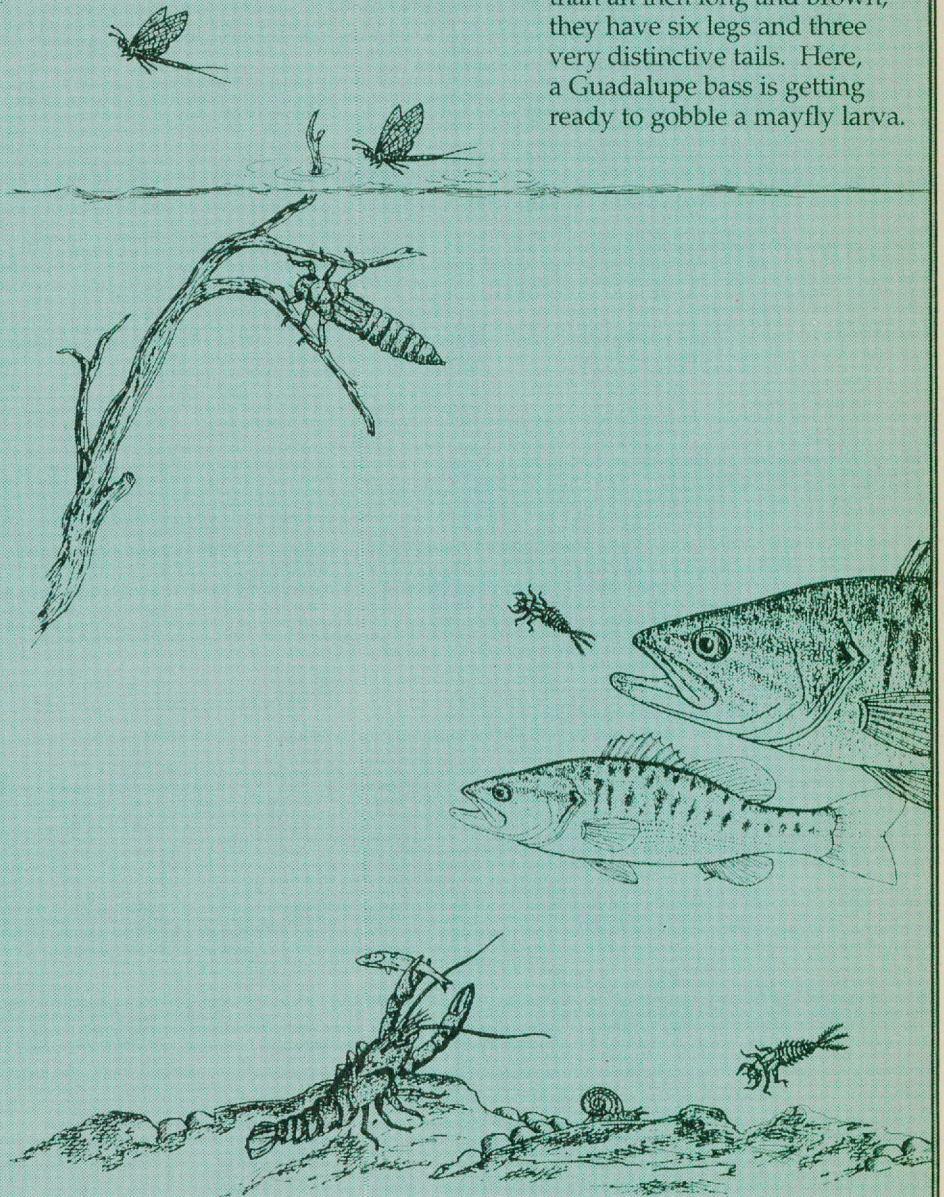
"Hip boots, knee boots and occasionally chest waders protect me while I'm taking water samples; at times I wear three layers of gloves just to be especially safe."

"Land managers and company owners do care about Texas rivers," she said. About 90 percent don't know their operation is causing a killing pollution, but when the dead fish pop up they pitch in, asking, "How can I help clean up this mess?"

"There are few victories in this work, mostly we look for compromises we can live with. Plant owners working alongside a contaminant biologist, chest-deep in messy water, is a picture of cooperation that never makes the nightly news." ♻️

## MAYFLY

Pollution-sensitive organisms die in streams carrying too much chemical or agricultural waste. The mayfly (order *emphemeroptera*) is one of the most commonly found clean-water-indicator species. Less than an inch long and brown, they have six legs and three very distinctive tails. Here, a Guadalupe bass is getting ready to gobble a mayfly larva.





# EARTH DAY & ARBOR DAY OUTINGS

## Austin/San Antonio/Hill Country

**Honey Creek SNA & Guadalupe River SP** Earth Day Celebration - April 22. Starts 9 a.m. Morning trail hike into Honey Creek Canyon to learn landscaping with native plants. Afternoon children's activities from 2-4 p.m. at Rust Visitor Center. Evening program from 6-7:30 p.m., 210-438-2656.

**McKinney Falls SP** Birdwalk - April 22. Observe Spring birds in their natural habitat. Starts 8 a.m., fee \$2 per adult, reservations required, guide park ranger R. Bohls, 512-243-2177.

**Palmetto SP** Sixth Annual Earth Day Photography Show and Contest - April 22. Call park for contest details, 210-672-3266.

## Dallas/Pineywoods

**Bonham SP** Earth Day Clean-Up - April 22. Participate in our lake shore clean-up. 8 a.m.-8 p.m., reservations available but not required, guide park staff M. Steen, 903-583-5022.

**Eisenhower SP** Walk for Parks - April 22. Help raise funds to build an education center. 10-noon, reservations required, guide park ranger L. Lowe, 903-465-1956.

**Fort Parker SP** Earth Day 1995 - April 22. Live wildlife exhibits, guest speakers, demonstrations, and much more! Starts 9 a.m., 817-562-5751.

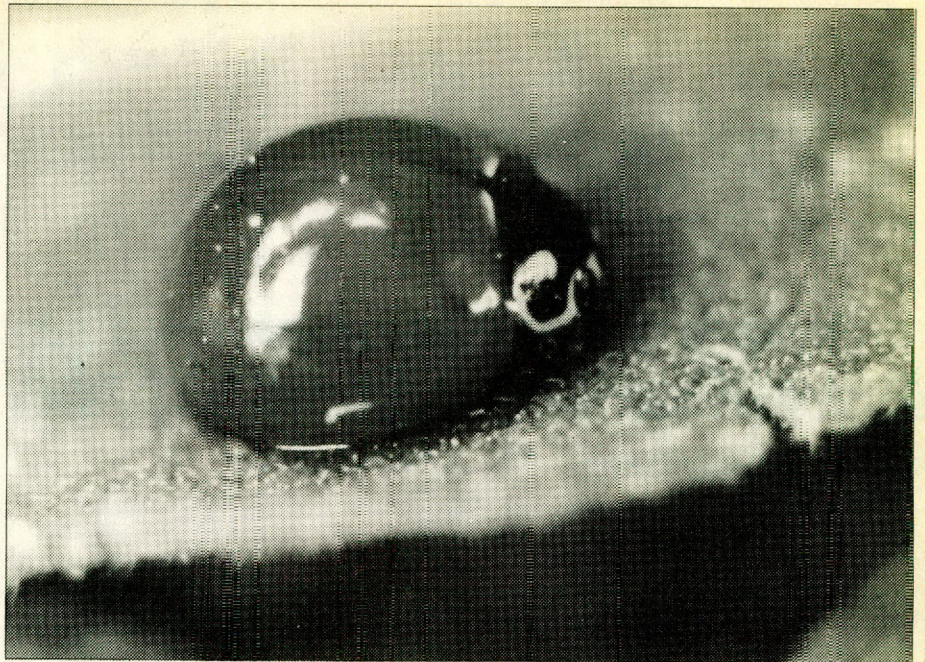
**Ray Roberts Lake SP/Isle du Bois Unit** March for Parks - April 22. Earth Day hike to raise funds for the construction of an interpretive/education center. Call for more information. Reservations available but not required, guide public information officer J. Brummett, 817-686-2148.

## Fort Worth/Cattle Country

**Lake Arrowhead SP** Electrofishing Demonstration - April 22. Demonstration of game fish sampling techniques. 10-11 a.m., TCP required, reservations available but not required, guide M. Howell, 817-528-2211.

## Houston/Upper Gulf Coast

**Lake Texana SP** Earth Day Activities - April 22. Fishing Day with the Ranger: Children between the ages of 5-10 will fish on the day-use pier with park rangers. Bait, cane poles and assistance provided. Event from 10 a.m.-2 p.m. Bird Watch and Talk: Tour the park and learn of the various species of birds that reside here. Event begins at 7 a.m. The Wild in Wildlife: Park personnel provide talks and show species of wildlife, plants, and insects to avoid while camping. Event



PAUL MONTGOMERY

from 3-6 p.m. Tools of the American Indian: A descendant of the Mescalero Apache nation will show and use Indian hunting tools. Weaving: Robert "Windwalker" Davila demonstrates basket and regular weaving using native plants of the area. Events are wheelchair accessible. Regular park entrance fee of \$5 will apply, 512-782-5718.

## Rio Grande/Brush Country

**Bentsen-Rio Grande Valley SP** Earth Day Planting - April 22. Participate in planting native trees. 8-noon, reservations available but not required, guide B. Loya, 210-585-1107.

**Bentsen-Rio Grande Valley SP** Arbor Day Irrigation - April 28. Help provide irrigation for newly planted trees. 8-noon, reservations available but not required, guide B. Loya, 210-585-1107.

**James E. Daughtrey WMA** Bird-watching by Canoe - April 22. Canoe the upper end of Choke Canyon Lake to view excellent bird habitat. Participants must bring their own canoe. 8-noon, reservations required, guide conservation specialist T. Smith, 512-786-3868. ♻️

## LADY BUG, LADY BUG FLY TO MY GARDEN

Bright red or orange lady bug beetles (*Coccinella* sp.) prey on aphids and scale-insects so ferociously that gardeners love seeing them among their flowers. Aphids harm plants by sucking the juices and spreading diseases as they go, but tiny lady bugs are true predators, eating the aphids and not the plants.

In the fall, lady bugs cluster in the thousands under leaves or in the bark of trees to begin a cold-weather hibernation period. Their spring emergence is a surprising spectacle to backwoods hikers and one not commonly seen. Don't run away if you chance upon it! Put a few lady bugs and some grass in a paper cup or paper bag, store them in a cool place and take them home to your garden!

*We love lady bugs!  
Campers released lady  
bugs in the park for  
Earth Day 1990 and the  
offspring are thriving!*

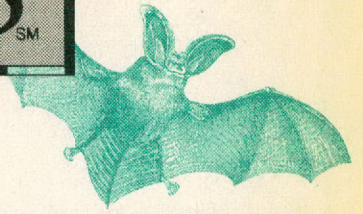
**STATE TEXAS PARKS**

**POSTCARDS FROM THE FIELD**

*Lee Ann Lowe, Park Ranger  
Eisenhower State Park*



# EXPLORE THE REAL TEXAS<sup>SM</sup>



## ART & PHOTOGRAPHY

### Amarillo/Lubbock/High Plains

**Palo Duro Canyon SP** Photographic Weekend at Palo Duro Canyon - May 5, 6, 7. Friday night, sit around the campfire with nationally known nature photographer Wyman Meinzer and discuss his methods and systems of photography. Saturday, hike through the canyon while photographing it and discuss your day around a campfire that evening. Sunday morning shoot the sunrise over the canyon and have a late brunch. Starts 5 p.m., reservations required, call for more information, guide photographer W. Meinzer, 806-488-2312.

### Austin/San Antonio/Hill Country

**Honey Creek SNA** Artist and Photographer's Outing - April 16, 23. Artists and photographers will be able to work at their own pace for the perfect photo or sketch. 9-noon, reservations and TCP required, guide naturalist P. Solis, 210-935-4012.

### Rio Grande/Brush Country

**Falcon SP Photo Contest - May 22.** Photo contest with plant and animal, human activity, and scenic divisions. Photos must be taken at Falcon SP by TCP members from December 1 through April 30. Awards will be given to the top two of each division. Winners will be chosen May 22, 1995. 210-848-5327.

**Fennessey Ranch Wildlife Photo Workshops** Former TPWD photographer Leroy Williamson will conduct six workshops at The Fennessey Ranch - see page 15.

### Dallas/Pineywoods

**Caddo Lake SP & WMA** Photography Tour on Caddo Lake - April 29; May 20. Photographer's boat tour of beautiful Caddo Lake. 7-11 a.m., fee \$25 per person, reservations and TCP required, guide Capt. D. Lomax, 903-679-3743.

### El Paso/Big Bend Country

**Big Bend Ranch SNA** Big Bend Ranch Photography Seminar - March 30-April 2. Join two of Texas' best-known outdoor photographers, Leroy Williamson and Jim Carr, at the spectacular Big Bend Ranch in west Texas. Photograph Chihuahuan Desert mountain wildflowers, sunrises and sunsets, animals and birds, and receive practical field instruction during the day. Evening activities will feature critiques and lectures with a focus on how to sell photographs. Meals and lodging included. Starts 1 p.m., fee \$425 per seminar, reservations and TCP required, guides environmental photographer J. Carr and former TPWD photographer L. Williamson, 915-229-3416.

**Big Bend Ranch SNA** Rock Art of Big Bend Ranch SNA - April 14-16. Two evening programs on Big Bend rock art and archeology. Visit historic and prehistoric rock art sites generally not open to the public. Meals, lodging, and custom T-shirt included. 8 a.m.-5 p.m., fee \$300 per person, reservations and TCP required, guide naturalist D. Alloway, 915-424-3327.

## BATS

### Austin/San Antonio/Hill Country

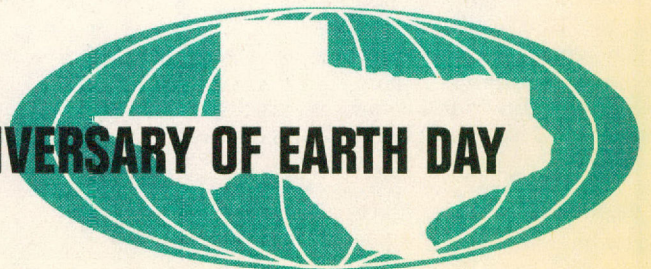
**Kickapoo Cavern SNA** Bat Flight and Interpretation at Green Cave - April 6, 8, 20, 22; May 11, 13, 25, 27. Emergence of Brazilian Freetail Bats at dusk with interpretation by park naturalist. TCP is required per person 17 years or older. 6:30-9 p.m., reservations required, guide park manager D. Stuart, 210-563-2342.

**Devil's Sinkhole SNA** Observation of Devil's Sinkhole and Brazilian Freetail Bat Flight - April 29; May 20. Need high clearance vehicle (no cars), insect repellent and drinking water. TCP is required per person 17 years or older. 5:30-9:30 p.m., reservations required, guide park manager D. Stuart, 210-563-2342.

### Fort Worth/Cattle Country

**Lake Mineral Wells SP** "Bat Chat" - April 1, 15, 22, 29; May 13, 17. See, hear, and learn about one of nature's most secretive and beneficial animals. Proceeds benefit B.A.T.S. (Beneficial Animal Teaching Society) which provides education, conservation, rehabilitation, and sanctuary for bats. Dates are dependent on the weather. 4-5 p.m., fee \$4 adults \$2 children 12 and under, reservations required, guide wildlife rehabilitator and founder of B.A.T.S. A. Lollar, 817-328-1171.

**APRIL 22, 1995 IS THE 25th ANNIVERSARY OF EARTH DAY**





## Austin/San Antonio/Hill Country

**Honey Creek SNA** Spring Birding Tour - April 23; May 6. 7:30-11 a.m., TCP required or suggested donation of \$5 per person or \$8 per family appreciated, reservations required, guide S. Bayley with the San Antonio Audubon Society, 210-438-2656.

**Kerr WMA** Bird-watching - May 20. Birding with emphasis on black-capped vireo and golden cheeked warbler. Information on management practices of their habitat. 8-noon, reservations and TCP required, guide conservation scientist B. Armstrong, 210-238-4483.

**McKinney Falls SP** Painted Bunting Walk - May 6, 13, 20, 27. Observe painted buntings in their natural habitat. 8-noon, fee \$2 per adult, reservations required, guide park ranger R. Bohls, 512-243-2177.

## Corpus Christi/Lower Gulf Coast

**Goose Island SP** Guided Bird Walks - April 5 through May 6 every Wednesday through Saturday. Starts at 8 a.m., guide local birder H. Kaigler, 512-729-2858.

**Guadalupe Delta WMA** Migratory Bird Tour - knee boots, insect repellent, picnic and drinks recommended. 7 a.m.-2 p.m. April 21; 7 a.m.-5 p.m. April 22; 7-noon April 23, reservations required, guide Dr. B. Ortego, 512-576-0022.

**Matagorda Island SP & WMA** Walking Bird Tours - April 1, 8, 9, 22. Bring lunch, good walking shoes, water, and binoculars. 8 a.m.-4 p.m., ferry fare is \$10 adults and \$5 per child plus \$2 tour fee, reservations and TCP required, guide naturalist L. Lewis, 512-983-2215.

## Dallas/Pineywoods

**Alabama Creek WMA** Red-Cockaded Woodpecker Nesting Tour - May 20. Will meet at the U.S. Forest Service building west of Applesprings at 4:30 p.m. to venture out and observe one of our endangered species. Bring binoculars and bug spray. 4:30 p.m.-dark, reservations available but not required, guide U.S. Forest Service biologist R. Mize, 409-831-2246.

**Caddo Grasslands WMA** Bird-watching Tour - April 29. 10-noon, fee \$1 per person, reservations and TCP required, guide conservation specialist J. Thomas, 903-884-3833.

**Caddo Lake SP & WMA** Bird-watching Tour - March 25; April 8; May 13. 10-noon, fee \$1 per person, reservations and TCP required, guide conservation specialist J. Thomas, 903-884-3833.

**Caddo Lake SP & WMA** Singing with the Birds - March 24. Slide presentation for bird watchers. 7-8 p.m., TCP required, guide ornithologist G. Luneau, 903-884-3833.

**Cooper Lake WMA** Bird-watching Tour - April 15; May 27. 10-noon, fee \$1 per person, reservations required, guide conservation specialist J. Thomas, 903-884-3833.

**Fairfield Lake SP** Wings on the Winds of Spring - May 13. A bird watcher's must-do. Take a guided tour of the park's bird-watching trail. After the hike, participants view a slide presentation at the Springfield Area Amphitheater. Bring binoculars. 6-9 p.m., TCP required, guide park manager D. Walsh, 903-389-4514.

**Texas State Railroad SHP** Bluebird Day at the Railroad - April 1. Bluebirds, wrens, and wood ducks take center stage at the Texas State Railroad. Hands-on demonstrations of birdhouse construction and maintenance. 10-11 a.m. and 1-1:30 p.m., reservations required, guide conservation specialist C. Lena, 409-383-0144 or for more information on train schedule and fees 1-800-442-8951.

**White Oak Creek WMA** Talking to the Turkeys - April 1. 10-noon, reservations and TCP required, guide conservation specialist J. Thomas, 903-884-3833.

## El Paso/Big Bend Country

**Big Bend Ranch SNA** "Spring Migration in the Big Bend" A Birding Seminar - May 8-10. Three-day birding seminar with field trips, slides, lectures, and plenty of free time for personal birding. Meals and lodging provided. Starts sunrise to sunset, fee \$330 per person, reservations and TCP required, guide J. Hines of Big Bend Birding Expeditions, 915-371-2356.

**Black Gap WMA** Border Birding - April 8. Birding along the Texas/Mexico border. 8 a.m.-4 p.m., reservations required, guide nongame specialist B. McKinney, 915-386-4529 or 915-376-2216.

**Davis Mountains SP** Bird Banding Observation - March, April & May every Wednesday, Friday & Saturday. See bird banding in operations and learn about neotropical migrants. 8-11 a.m., reservations required for large groups only, 915-426-3337.

**Las Palomas WMA/Ocotillo Unit** Bird-watching on the Rio Grande - March 25; April 22. Bird-watch along the Rio Grande during spring migration. Bring drinking water. No facilities available on the Unit. 9 a.m.-1 p.m., reservations and TCP required, guide conservation scientist T. Bone, 915-837-2051.

## Houston/Upper Gulf Coast

**Candy Cain Abshier WMA** Migrant Songbird Tour - April 22. View migrant songbirds while touring several coastal woodlots. 1-4 p.m., reservations and TCP required, guide area manager/biologist T. Turney, 409-736-2551.

**Eagle Lake** First Annual Attwater's Prairie Chicken Festival - March 24-26. Tours of Attwater's Prairie Chicken National Wildlife Refuge, watchable wildlife tours, live prairie animal exhibits, art fair, fun run, lectures by birding experts and much more. Co-sponsored by TPWD. Starts 6:30 on March 24, 409-234-2780.

**Jasper SFH** Bird-watching - April 29. 7:30 a.m.-1 p.m., reservations required, guide biologist R. J. Helton, 409-384-9965.

**Lake Livingston SP** Birding Tour - May 6. 9-noon, reservations available but not required, guide biologist R. Helton, 409-384-2221.

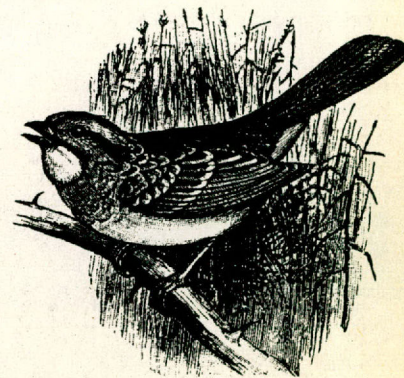
**Mad Island WMA** Migratory Bird Tour - April 15. Knee boots, insect repellent, picnic and drinks recommended. 7 a.m.-dark, reservations required, guide Dr. B. Ortego, 512-576-0022.

**Peach Point WMA** Migratory Bird Tour - April 29. Knee boots, insect repellent, picnic and drinks recommended. 7 a.m.-dark, reservations required, guide Dr. B. Ortego, 512-576-0022.

## Rio Grande/Brush Country

**Choke Canyon SP/Calliham Unit** Bird-watching - March 25; April 8; May 20. 7-11 a.m. in March and April; and 8-11 a.m. in May, reservations required, guide conservation specialist T. Smith, 512-786-3868.

**Las Palomas WMA/Longoria Unit** Bird-watching - April 29. Will meet at the Longoria Unit for a birding walk then travel to the Carricitos and/or Tucker Units for continued birding. 7 a.m.-4 p.m., reservations and TCP required, guides biologists S. Benn and G. Waggenerman, 210-383-8982.



Explore...Continued on page 6



## SPLISH SPLASH

### Austin/San Antonio/Hill Country

**San Marcos Lions Club City Park Aquatic Plants Survey of the San Marcos River** - April 29. Participants will learn aquatic plant identification, including endangered species, and the natural history of the San Marcos River. Snorkeling and swimming gear is highly recommended. Bring picnic lunch. 9 a.m.-4 p.m., fee \$10 per person, reservations and TCP required, guide conservation biologist Dr. D. Bowles, 512-754-6844.

### Corpus Christi/Lower Gulf Coast

**Matagorda Island SP & WMA Marine Tour** - May 7, 21. Experience the marine environment through a variety of sampling methods. Bring lunch, water and hard-soled shoes for wading. 10 a.m.-4 p.m., ferry fare is \$10 adults and \$5 per child plus \$2 tour fee, reservations and TCP required, guide conservation specialist C. Veatch, 512-983-2215.

**Matagorda Island SP & WMA Beachcombing and Shelling Tour** - April 23; May 13. Participants will be transported to the Gulf of Mexico beach for six hours of shelling and beachcombing. Transportation is in an open four-wheel drive vehicle, so dress for the weather. Information on mollusks and the ecosystems of Gulf barrier island will be provided by TPWD staff. Bring lunch for picnicking on the beach. 8 a.m.-4 p.m., ferry fare is \$10 adults and \$5 per child plus \$2 tour fee, reservations and TCP required, guide conservation specialist M. Kelley, 512-983-2215.

**UT Coastal Studies Lab South Padre Island Marine Ecology Program** - April 7. Slide presentation on the Laguna Madre marine life followed by a sampling trip aboard the research vessel Laguna Madre. 10 a.m.-1 p.m., reservations required, guide TPWD coastal fisheries biologist, 210-350-4490 or 210-350-4491.

### Dallas/Pineywoods

**Caddo Lake SP & WMA Boating Ecotour on Caddo Lake** - March 25; April 8, 22; May 13, 27. 1-3 p.m., fee \$7 adults \$5 children, reservations and TCP required, guide Capt. D. Lomax, 903-679-3743.

### Fort Worth/Cattle Country

**Abilene SP Pre-Season Pool Day** - May 21. TCP members are invited to use the swimming pool before the regular season opens. 1-6 p.m., 915-572-3204.

### Houston/Upper Gulf Coast

**Blue Elbow Swamp WMA Blue Elbow Swamp Canoe Tour** - May 6. Learn about swamp ducks, back striders, sweet rushes,

and sac-a-lait by canoe. Must provide your own canoe, kayak, or pirogue. Meet at boat ramp at Sabine River bridge on I.H. 10 on Texas state side of river. 6 a.m.-5 p.m., reservations required, guides E. Taylor and other TPWD biologists, 409-736-2540.

**Martin Dies, Jr. SP Spring Boating Tour** - March 25. Take a guided tour of the Angelina-Neches/Dam-B WMA. Bring cameras, binoculars, sunglasses and warm clothes. Maximum of 12 people so make reservations soon! 9-11:30 a.m. and 2-4:30 p.m., fee \$10 per person plus \$4 vehicle entrance fee (vehicle entrance fee waived with TCP or Parklands Passport), reservations required, guide conservation specialist C. Lena, 409-384-5231.

**Sea Rim SP Boat Tour of Coastal Marsh** - March, April & May every Wednesday, Saturday & Sunday. Travel by airboat or outboard boat into the marshlands unit of the park. Observe birds, plants, and alligators. 9 a.m.-4 p.m., fee \$12.50 adults \$7.50 children 6-12 yrs. TCP members get \$2 discount, reservations required, guide park ranger, 409-971-2559.

## BIG BEND BUS TOURS

### El Paso/Big Bend Country

**Big Bend Ranch SNA Big Bend Ranch Bus Tour** - April 15; May 20. Starting at the Barton Warnock Center in Lajitas and touring Big Bend Ranch SNA. Will make stops at archeological, geological, and historic sites with lunch included. 8 a.m.-5 p.m., fee \$55 for TCP members, \$60 for non-TCP members, reservations required, guide naturalist D. Alloway, 512-389-8900.

**Big Bend Ranch SNA Big Bend Ranch Bus Tour** - March 25; April 8, 22; May 13, 27. Starting at the Barton Warnock Center in Lajitas and touring Big Bend Ranch SNA. Will make stops at archeological, geological, and historic sites. This tour is with a licensed private guide. 8 a.m.-5 p.m., fee \$70 per person, reservations required, guide S. Richardson of the Big Bend Touring Society, 915-371-2548.

**Big Bend Ranch SNA Big Bend Ranch Bus Tour** - April 1; May 6. Tour of Fort Leaton SHP and Big Bend Ranch SNA. Will make stops at archeological, geological, and historic sites with lunch included. 8 a.m.-5 p.m., fee \$55 for TCP members, \$60 for non-TCP members, reservations required, guide naturalist D. Alloway, 512-389-8900.



### 1995 PARK RESERVATIONS

Campsites, cabins, shelters and group facilities can be reserved for up to eleven months in advance.

Reservations **must** be made at least **three days in advance** of your planned stay.

### REGULAR RESERVATION HOURS

Monday through Friday  
8 a.m. to 6 p.m.

### OUR PHONE NUMBERS

To make reservations  
1-512-389-8900

To cancel reservations  
1-512-389-8910

Information 1-800-792-1112

Press 3 for Parks Information and then 3 again for All Other Parks Information

You can still make reservations directly at:

**Indian Lodge** 915-426-3254

**Texas State Railroad** 1-800-442-8951





## BIKING

### Austin/San Antonio/Hill Country

**McKinney Falls SP** Mountain Biking Clinic with REI - May 27. Learn about mountain bike safety and equipment with Recreational Equipment Incorporated. Starts 10 a.m., fee \$2 per person, guide N. Crumpton, 512-243-2177.

### Dallas/Pineywoods

**Bonham SP** Mountain Bike Trail Ride - March 26; April 23; May 14. 10 a.m.-6 p.m., free to TCP members all others daily entrance fee, reservations available but not required, guide park staff M. Steen, 903-583-5022.

**Fairfield Lake SP** Fat Tire Fandango - April 8. An overview of mountain biking with tips on mountain bike safety practices, bike maintenance, and the low-down on area opportunities followed by a leisurely tour of the six-mile primitive area trail. Bring your mountain bike, helmet and water bottle and plan on seeing this area from a whole different perspective. 1-4 p.m., guide park manager D. Walsh, TCP required, 903-389-4514.

**Ray Roberts Lake SP/Isle du Bois Unit** Mountain Bike Trail Ride - May 20. Bring your bike for a tour of our improved surface trail system. Leisurely 3 to 4 mile shaded ride with a few hills. Bring water bottles, helmets, and pack a picnic lunch. 9:30-11:30 a.m., donations accepted, reservations required, guide park ranger K. Matthews, 817-686-2148.

### Fort Worth/Cattle Country

**Dinosaur Valley SP** Mountain Bike Ride - April 1; May 6. Fairly strenuous 7 to 8 mile ride in hilly terrain. Helmet required. 10-noon, reservations required, guide park superintendent B. Baker, 817-897-4588.

### Rio Grande/Brush Country

**Choke Canyon SP/South Shore** Mountain Bike Ride - April 1; May 13. Ride at your own pace to view wildlife. Over 19 miles of paved roads. 9 a.m.-3 p.m., reservations required, guide conservation specialist T. Smith, 512-786-3868.

### Austin/San Antonio/Hill Country

**McKinney Falls SP** Campfire Sing-A-Long - April 29; May 26. Join an old-fashioned campfire sing-a-long with a few of Austin's finest musicians. 7:30-10 p.m., fee \$1 per adult 50 cents children under 12, guide park ranger R. Bohls, 512-243-2177.

### Dallas/Pineywoods

**Eisenhower SP** A Mother's Day Event - May 14. Steve Schick will entertain with his unique style of music and poetry. 2-3:30 p.m., fee \$3 per person, reservations required, 903-465-1956.

**Fairfield Lake SP** Moonshine over Freestone County - March 25. Once known during the prohibition period as a center for the illegal production of moonshine, Freestone County has a rich history of the running conflict between the "moonshiners" and the "revenuers." Come learn about the exploits of these

## CAMPING SKILLS

### Austin/San Antonio/Hill Country

**McKinney Falls SP** Outdoor First Aid - April 15. Learn how to take care of outdoor emergencies. Starts 8 a.m., fee \$2 per adult, reservations required, guide park ranger R. Bohls, 512-243-2177.

**McKinney Falls SP** Outdoor Cooking - May 6. Learn how to cook outdoors. 9:30 a.m.-12:30 p.m., fee \$6 per person, reservations required, guide park ranger R. Bohls, 512-243-2177 or 512-243-1643.

### Dallas/Pineywoods

**Caddo Lake SP & WMA** Caddo Camp-Out - April 21. TCP holders can enjoy an overnight camping trip with planned activities and a nature walk the following morning. Fee \$8 per person, reservations required, guide conservation specialist J. Thomas, 903-884-3833.

### El Paso/Big Bend Country

**Big Bend Ranch SNA** Desert Survival Workshop - April 21-23; May 12-14. Three day workshop in desert survival including water location, primitive fire starting and cooking, edible and first aid plants, expedient shelter and construction, signalling, and aiding rescuers. Includes meals, lodging, and custom T-shirt. 8 a.m.-5 p.m., fee \$300 per person, reservations and TCP required, guide naturalist D. Alloway, 915-424-3327.

characters and how moonshine was actually made as well as the laws that regulate these activities. 6:30-8 p.m., guide park manager D. Walsh, TCP required, 903-389-4514.

**North Toledo Bend WMA** Once Upon a Nightmare! - April 8. Sit around a campfire and listen to some unbelievable but true stories of all sorts. Hotdogs and chips provided. Bring drinks, lawn chairs, warm clothing, and bug spray. Starts at 4:30 p.m., fee \$3 per person, reservations required, guide conservation specialist C. Lena, 409-383-0144.

### Fort Worth/Cattle Country

**Cleburne SP** Traditional Cowboy Music Concert - April 15; May 20. An evening of traditional cowboy music and poetry. This relaxing evening under the stars is a good opportunity to enjoy and learn about cowboy lifestyle and music of the old west. 7:30-10 p.m., donations appreciated, reservations available but not required, guide guitarist and cowboy singer S. Schick, 817-645-4215.



## CAVE TOURS

### Austin/San Antonio/Hill Country

**Colorado Bend SP** Wild Cave Tours - March, April & May every Saturday & Sunday. Discover what speleologists (cavers) experience while exploring the underground world. The crawling tour takes you through several relatively small and progressively more difficult caves. The walking tour takes you to Gorman Cave. Wear old clothes, substantial footwear (feet may get wet) and bring a flashlight. Equipment suggested for crawling tours: strap-on headlight, knee pads and elbow pads. Starts 9:15 a.m. Saturdays and Sundays for Walking Tours and 1:30 p.m. Saturdays for Crawling Tours, resource and weather permitting, \$8 per person for walking tour and \$15 per person for crawling tour, reservations required maximum 10 people per tour, guide E. Young of the Texas Speleological Association, 915-628-3240.

**Kickapoo Cavern SNA** Primitive Tour of Kickapoo Cavern - March 22, 23, 25; April 6, 8, 20, 22; May 11, 13, 25. Flashlight tour of undeveloped cave! TCP is required per person 17 years or older. 1-4 p.m. in March and 4-6:30 p.m. in April and May, reservations required, guide park manager and biologist D. Stuart, 210-563-2342.

Explore...Continued on page 8



# WILDSCAPE EXPLORATION

## Austin/San Antonio/Hill Country

**Colorado Bend SP Turkey Calling Seminar** - April 1, 2. For intermediate and beginner turkey callers. 2-4 p.m. April 1 and 7-11 a.m. April 2, \$20 per person; \$15 with TCP. Entrance and activity fees may apply, reservations required, 8 people maximum, guides R. Basse and D. Hanlon with TPWD, 915-628-3240.

**Crabapple Crossing Country Store Star Party** - April 1. *Enchanted Rock Magazine* is sponsoring this party located five miles north of Enchanted Rock SNA on Ranch Road 965. Starts 7:30 p.m., guides C. Alton and S. Mgbroff, 915-247-4260.

**McKinney Falls SP Texas Game Wardens** - March 25. What does a Texas Game Warden do? Starts 10 a.m., guide Texas Game Warden, 512-243-2177.

**McKinney Falls SP Snakes Alive** - March 25; May 13. Learn everything you ever wanted to know (or didn't want to know) about snakes of Central Texas. Starts 7 p.m., guide resource protection staff, 512-243-2177.

## Dallas/Pineywoods

**Eisenhower SP Wildscape Program** - March 23. Explore the use of native plants in landscaping. 7-8 p.m., fee \$15 per person, reservations required, guide L. Cano from the Nongame and Urban Program, 903-465-1956.

**Fairfield Lake SP Call of the Wild** - May 6. Techniques used to attract various species of wildlife such as predators, songbirds, turkeys, deer and waterfowl. Understand animal communication and see wildlife in its natural setting. 7-9 p.m., guide park manager D. Walsh, 903-389-4514.

## El Paso/Big Bend Country

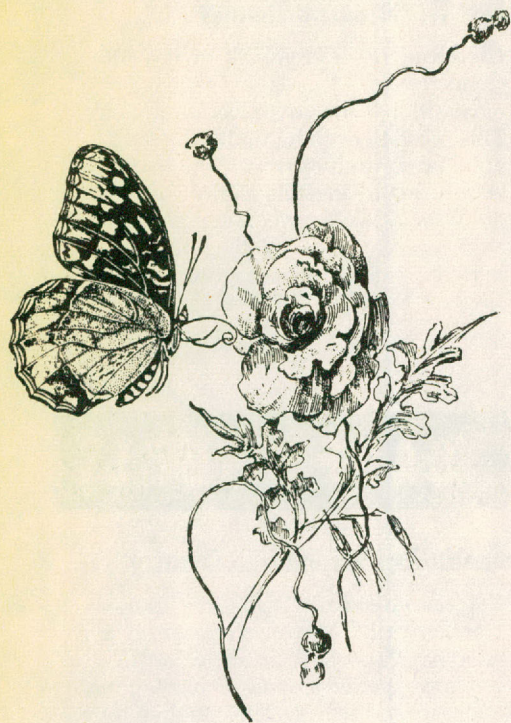
**Big Bend Ranch SNA The Geology of Big Bend Ranch SNA** - April 7-9. Three day seminar on the geology of the ranch emphasizing field techniques, practical environmental applications, and work in the Solitario. Lodging and meals included. 8 a.m.-5 p.m., fee \$200 per person, reservations and TCP required, guide geologist B. Bourbon, 915-371-2202.

## Fort Worth/Cattle Country

**Cleburne SP Snakes, Bats and Spiders - Animals with a Bad Rap** - May 13. This educational program presented with living snakes, bats and spiders will help people understand the importance of these misunderstood animals to the balance of nature. 10-11:30 a.m., donations appreciated, reservations available but not required, guide representative of WILDCARE organization J. Richardson, 817-645-4215.

## Rio Grande/Brush Country

**Choke Canyon SP/Calliham Unit Wildlife Track Identification** - May 6, 27. Children ages 6 to 12 can explore a variety of wildlife tracks along the shoreline. Also, learn print taking with plaster of paris. 9-noon, reservations required, guide conservation specialist T. Smith, 512-786-3868.



## EASTER

### Dallas/Pineywoods

**Daingerfield SP 7th Annual Easter Egg Hunt** - April 15. Over 2,000 eggs hidden and many with prizes. Starts at 2 p.m., 903-645-2921.

### Houston/Upper Gulf Coast

**Fanthorp Inn SHP Easter Sunrise Service** - April 16. 30-minute Easter Sunrise Service followed by coffee and pastries. Will be conducted on the south lawn of the Inn. 7-8 a.m., 409-873-2633.

## HORSE RIDES

### Austin/San Antonio/Hill Country

**Hill Country SNA Guided Horseback Tour** - April 9; May 14. Ride focusing on various cultural and natural resources of the area. Mount and lunch included. 8:30 a.m.-12:30 p.m., fee \$40 plus tax for TCP members; \$42 plus tax for non-members plus \$1 park entrance fee, guide conservation specialist S. Heavey, reservations required and must be made through Running 'R' Ranch, 210-796-3984.

### Amarillo/Lubbock/High Plains

**Palo Duro Canyon SP Ride the Horse Trails with the Randall County Sheriff's Posse** - April 15; May 20. Enjoy the beauty

of Palo Duro Canyon the way the early settlers did - from horseback. Ride the trails, enjoy the wildlife and the panoramic beauty of the canyon. Bring your own horse or rent one with advance reservations. Starts at 9 a.m., free to TCP members all others \$5 per vehicle, reservations required, guide M. Wilson, 806-488-2227.

### Fort Worth/Cattle Country

**Dinosaur Valley SP Horseback Trail Ride** - April 22; May 20. Horseback ride viewing different areas of the park. Terrain is rough and rocky, and will cover 7 to 10 miles. Will be crossing the river. 10-noon, reservations required, guide park ranger E. Lujan, 817-897-4588.





## FISH STORIES

### Dallas/Pineywoods

**Atlanta SP** Fishing Clinic for Kids - May 20. A great opportunity for the kids to get out and learn about sport fishing. All equipment provided. 1-3 p.m., guide conservation specialist J. Thomas, 903-884-3833.

**Daingerfield SP** Fishing Clinic for Kids - May 6. A great opportunity for the kids to get out and learn about sport fishing. All equipment provided. 1-3 p.m., guide conservation specialist J. Thomas, 903-884-3833.

**Fairfield Lake SP** The Tale of Tilapia - May 20. What do you know about Egyptian mouth breeders? Imported cichlids? Well, come find out all about the interesting and tasty tilapia.

Bowfishermen will enjoy learning what makes this species tick as well as a few tips on how to catch, clean and cook this exotic species. 8-9:30 p.m., TCP required, guide park manager D. Walsh, 903-389-4514.

### Houston/Upper Gulf Coast

**Washington-on-the-Brazos SHP** Children's Fishing Derby - May 13. Come celebrate National Fishing Week, hosted by the inland fisheries staff and the park rangers at Washington SP. Children must be 12 or under to participate. Prizes will be awarded after the fishing activities. Limited enrollment. 9-11 a.m., fee \$1 per participant, reservations, 409-878-2214.



## TEXAS HISTORY

### Austin/San Antonio/Hill Country

**McKinney Falls SP** Early Austin History - May 20. Learn about Thomas McKinney and the early days of Austin. Starts 7 p.m., guide J. Berry, 512-243-1643.

### Corpus Christi/Lower Gulf Coast

**Matagorda Island SP & WMA** History Tour - May 6. A history tour of the island will be presented with demonstrations, a trip to the Lighthouse, and grave sites. 10 a.m.-4 p.m., ferry fare is \$10 adults and \$5 per child plus \$2 tour fee, reservations and TCP required, guide conservation specialist C. Veatch, 512-983-2215.

### Fort Worth/Cattle Country

**Mother Neff SP** Leon River Fest - May 13. Interpretive tours and presentations, heritage demonstrations, arts, crafts, food, and entertainment. 10 a.m.-6 p.m., free to TCP holders all others \$3 park entrance fee, 817-853-2389.

### Houston/Upper Gulf Coast

**Fanthorp Inn SHP** Stagecoach Days - April & May second Saturday of each month. Ride in replica of 1850 Concord Stagecoach, dulcimer players and other demonstrations, and tours of the Inn. Noon-4 p.m., fee \$4 adults \$2.50 children 12 and under, 409-873-2633.

**Varner-Hogg Plantation SHP** San Jacinto Festival at Varner-Hogg Plantation - April 23. Interpretive and educational event celebrating early Texas history from 1836. Noon-7 p.m., free to TCP holders all others \$3 adults \$2 children, 409-345-4656.

**Washington-on-the-Brazos SHP** Living History Programs at Independence Hall - every Saturday & Sunday in April. Relive the "Washington Story" through the eyes of an early settler, who recounts the events surrounding the Declaration of Independence. Visit with Anson Jones himself as he tells of his life, home, and political experience during the Republic years. 1 p.m., 2 p.m., and 3 p.m. each day, free admission, fee for Living History tours through the Anson Jones Home and at the Independence Hall only, \$3 per adult and \$1.50 per student, free to TCP members, 409-878-2214.

## WILDFLOWERS

### Dallas/Pineywoods

**Fairfield Lake SP** Budding Roadsides, Blooming Fields - April 15. Ever wonder about the names of those fantastic flashes of color that abound in the spring pastures? Come witness the profusion of wildflowers that abound in the Freestone County area and attend an interpretation of the more common species during a slide presentation. 8-9:30 p.m., guide volunteer S. Walsh, 903-389-4514.

### Fort Worth/Cattle Country

**Cleburne SP** Wildflowers of Cleburne SP - April 29. Slide presentation of wildflowers found throughout the seasons in the park. 8-9 p.m., donations appreciated, reservations available but not required, guide park ranger D. Owens, 817-645-4215.

**Cleburne SP** Wildflower and Hayride Tour - April 30. Enjoy a hayride tour of the park with several stops along the way to view, identify and learn about the wildflowers in the park. 10-11:30 a.m. and 2-3:30 p.m., donations appreciated, reservations required, guide park ranger D. Owens, 817-645-4215.

*Explore...Continued on page 13*



## Amarillo/Lubbock/ High Plains

**Palo Duro Canyon SP** In Randall County, 12 miles east of Canyon on State Highway 217. From Amarillo, it is south on Ranch Road 1541 and then 8 miles east on State Highway 217. 806-488-2227.

## Austin/San Antonio/ Hill Country

**Colorado Bend SP** In Lampasas and San Saba Counties on the Colorado River, about 10 miles above Lake Buchanan, near the community of Bend. Bend is north of Llano via State Highway 16 or west of Lampasas via U.S. Highway 183/190. Paved access to Bend via R.R.s 501, 580 or 581. From Bend there are approximately 4 miles of unpaved road to the park entrance. 915-628-3240.

**Devil's Sinkhole SNA** Closed to the public. Access by Texas Conservation Passport only. In northeastern Edwards County about 135 miles northwest of San Antonio; contact Kickapoo Cavern SNA for directions at 210-563-2342.

**Enchanted Rock SNA** In Gillespie County, 18 miles north of Fredericksburg on Ranch Road 965. 915-247-3903.

**Granger WMA** In Williamson County. From Taylor, take State Highway 95 north to Circleville and turn east on F.M. 1331 then approximately 6 miles to the Wilson Fox Park/Granger Dam road. Corps of Engineers headquarters has area maps (with registration boxes marked) at the north end of the dam road.

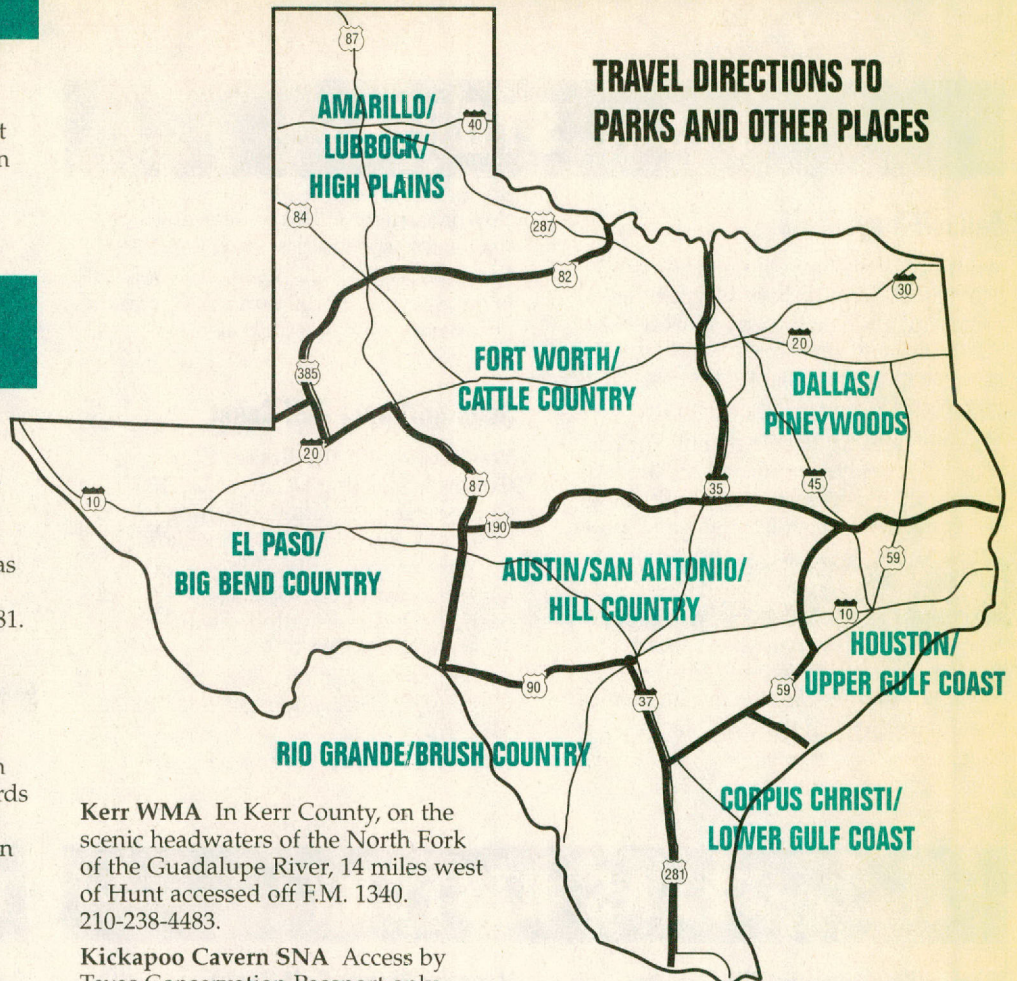
**Guadalupe River SP** In Kendall and Comal Counties, 30 miles north of San Antonio; on State Highway 46 between Boerne and U.S. Highway 281. 210-438-2656.

**Hill Country SNA** In Bandera and Medina Counties, 10 miles southwest of Bandera. From Bandera, take State Highway 173 south a 1/4 mile to R.R. 1077 (also marked as "Dixie Dude R.R."); go 10 miles to the park entrance, the last 1.5 mile stretch is not paved. 210-796-4413 (park is closed Tuesdays and Wednesdays).

**Honey Creek SNA** Access through Guadalupe River State Park, see above. 210-438-2656.

# DRIVE ACROSS TEXAS

## TRAVEL DIRECTIONS TO PARKS AND OTHER PLACES



**Kerr WMA** In Kerr County, on the scenic headwaters of the North Fork of the Guadalupe River, 14 miles west of Hunt accessed off F.M. 1340. 210-238-4483.

**Kickapoo Cavern SNA** Access by Texas Conservation Passport only. Everyone over 17 years of age or older required to have a Passport. In Edwards and Kinney Counties, 40 miles west of Uvalde on U.S. Highway 90, then 22.5 miles due north of Bracketville on R.R. 674; park entrance is on west side of road. 210-563-2342.

**Longhorn Cavern SP** In Burnet County, about 5 miles south of Burnet on U.S. Highway 281. 512-756-4680.

**M.O. Neasloney WMA** In Gonzales County about 8 miles south of Luling, on the west side of State Highway 80. 409-968-6591.

**McKinney Falls SP** In Travis County, 13 miles southeast of the State Capitol. Take U.S. Highway 183 south to Scenic Loop Road, turn onto Scenic Loop and go 2 miles to the park entrance. 512-243-1643.

**Palmetto SP** In Gonzales County, 6 miles south of Luling on U.S. Highway 183 or twelve miles north of Gonzales on U.S. Highway 183. 210-672-3266.

**San Marcos Lions Club City Park** In Hays County, from I.H. 35, exit Aquarena Springs Drive heading west. Turn left on Bobcat Drive (traffic light

before Strahan Coliseum), take first street on right and follow into the city park parking lot. 512-754-6844.

**Somerville WMA** In Burleson and Lee Counties approximately 12 miles west-southwest of Somerville. 409-279-2048.

**Walter Buck WMA** In Kimble County, on the South Fork of the Llano River. Take State Highway 377 south of Junction, the WMA entrance is 3 miles past the city limits sign. 915-446-3994.

## Corpus Christi/ Lower Gulf Coast

**GCCA/CPL Marine Development Center** In Corpus Christi. From I.H. 37 take South Padre Island Drive Exit (Highway 358) to Waldron Road and turn right. Drive 4 to 5 miles until road dead ends. Stop at gate. 512-939-7784.

**Goose Island SP** In Aransas County, 10 miles north of Rockport on State Highway 35 to Park Road 13 then two miles east to park entrance. 512-729-2858.



**Guadalupe Delta WMA** In Calhoun County, approximately 15 miles southwest of Port Lavaca on south side of Highway 35. 512-576-0022.

**Matagorda Island SP** In Calhoun County, about 50 miles southeast of Victoria; park headquarters, dock and information center at Port O'Connor. 512-983-2215.

**UT Coastal Studies Lab South Padre Island** In Cameron County take Route 100 to Port Isabel, cross bridge to Padre Island. At end of bridge turn right, go to Isla Blanca County Park, enter park. Approximately 50 yards turn left, then the first right.

**Welder Flats Coastal Preserve** In Calhoun County at the junction of the Victoria Barge Canal with the Gulf Intracoastal Waterway. Boat access only. 512-576-0022.

## Fort Worth/Cattle Country

**Abilene SP** In Taylor County 16 miles southwest of Abilene off F.M. 89. 915-572-3204.

**Cleburne SP** In Johnson County. From Cleburne take Highway 67 west for approximately 4 miles, turn on Park Road 21 for 6 miles. 817-645-4215.

**Dinosaur Valley SP** In north central Somervell County about 58 miles southwest of Fort Worth. Travel 4 miles west of Glen Rose on F.M. 205/P.R. 59, 1 mile to headquarters. 817-897-4588.

**Fossil Rim Wildlife Center** In Somervell County 60 miles southwest of the Dallas/Fort Worth metroplex. Just off Highway 67, approximately 3 miles southwest of Glen Rose. Turn south onto County Road 2008 at the Fossil Rim sign. Go 2 miles to the stonework entrance on the right. 817-897-2960.

**Lake Arrowhead SP** Located about 20 miles southeast of Wichita Falls. From Highway 281, take F.M. 1954 for 8 miles. From Highway 287, take F.M. 2393 south for 8 miles. 817-528-2211.

**Lake Mineral Wells SP** In Parker County, about 3 miles east of Mineral Wells (14 miles west of Weatherford) on U.S. Highway 180. 817-328-1171.

**Mother Neff SP** In Coryell County, 18 miles west of Moody on State Highway 236. 817-853-2389.



## Dallas/Pineywoods

**Alabama Creek WMA** In Trinity County. Meet at U.S. Forest Service building west of Applesprings on State Highway 94. 409-831-2246.

**Atlanta SP** In Cass County. From Dallas/Fort Worth exit I.H. 30 at U.S. Highway 259 south, turn east onto State Highway 77. 903-884-3833.

**Bonham SP** In Fannin County, southeast of Bonham. Take State Highway 78 to F.M. 271 go south/southeast for 2 miles to P.R. 24. 903-583-5022.

**Caddo Grasslands WMA** In Fannin County, 15 miles north of Honey Grove, off F.M. 100. 903-884-3833.

**Caddo Lake SP/WMA** In Harrison County, 15 miles northeast of Marshall. Take State Highway 43 north to F.M. 2198, turn east and travel about 3/4 mile to P.R. 2. 903-679-3351.

**Cooper Lake WMA** In Hopkins County 12 miles north of Sulphur Springs on State Highway 154. 903-884-3833.

**Daingerfield SP** In Morris County, from Mt. Pleasant exit on Ferguson Road. Follow Highway 49 to the park, about 18 miles from I.H. 30. 903-645-2921.

**Eisenhower SP** In northern Grayson County, 5 miles northwest of Denison. Take U.S. Highway 75A north to F.M. 1310, turn northwest and travel about 2 miles to P.R. 20. 903-465-1956.

**Fairfield Lake SP** In eastern Freestone County near Fairfield; from I.H. 45 take U.S. Highway 84 east to F.M. 488, go north to F.M. 2570 then go east to P.R. 64. 903-389-4514.

**Fort Parker SP** In Limestone County between Mexia and Groesbeck, off State Highway 14. 817-562-5751.

**Gus Engeling WMA** In Anderson County, 21 miles northwest of Palestine; or 38 miles southeast of Corsicana on U.S. Highway 287. 903-928-2251.

**Moore Plantation WMA** In Sabine and Jasper Counties, 6 miles south of Hemphill on State Highway 87. 409-384-5231.

**North Toledo Bend WMA** In Shelby County, from Center take State Highway 7 north 16 miles to Joaquin. Take Highway 139 south 4 miles to F.M. 2572. Turn left on F.M. 2572 and drive 1.5 miles to WMA entrance on the right. 409-383-0144.

**Pat Mayse WMA** In northwestern Lamar County, approximately 12 miles northwest of Paris, on F.M. 79 north off Loop 286. 903-884-3833.

**Ray Roberts Lake/Isle Du Bois SP** In Denton County, on F.M. 455 between Pilot Point and Sanger, two miles east of the Ray Roberts Lake Dam. 817-686-2148.

**Richland Creek WMA** In Freestone and Navarro Counties, about 28 miles east of Corsicana, about 31 miles northwest of Palestine on U.S. Highway 287. 903-389-2216.

**Texas State Railroad SHP** Palestine Depot in Anderson County. In Palestine, 2 miles east of Loop 256 on U.S. Highway 84. 903-683-2561.

**White Oak Creek WMA** In Morris County, 3 miles west of Naples on State Highway 77. 903-884-3833.

## El Paso/Big Bend Country

**Barton Warnock Environmental Education Center** Located in Lajitas. Part of the Big Bend Ranch SNA. 915-424-3327.

**Big Bend Ranch SNA** In Brewster and Presidio Counties, north of Lajitas on F.M. 170. 915-424-3327.

**Big Spring SP** In Howard County, 36 miles east of Midland, or 100 miles west of Abilene. From Midland, take Interstate 20 east to Big Spring, take Business 20 exit eastbound, turn right onto F.M. 700, park is located on the right. 915-263-4931.

**Black Gap WMA** In Brewster County 58 miles south of Marathon. Drive 40 miles south on Highway 385 to F.M. 2627, then east on F.M. 2627 for 18 miles. 915-376-2216.

**Davis Mountains SP** In Jeff Davis County, about 4 miles northwest of Fort Davis, via State Highway 118. 915-426-3337.

**Devils River SNA** In Val Verde County, about 45 miles north of Del Rio and 22 miles off U.S. Highway 277. 210-395-2133.

**Las Palomas WMA/Ocotillo Unit** In southwestern Presidio County, about 36 miles northwest of Presidio, or 1 mile northwest of Ruidosa on F.M. 170. 915-837-2051.

*Continued on page 12*



# DRIVE ACROSS TEXAS

Continued from page 11

## Houston/Upper Gulf Coast

**Atkinson Island WMA** Off Morgan's Point on the Houston Ship Channel; accessed by boat only. 409-736-2551.

**Blue Elbow Swamp WMA** In Orange County. Meet at boat ramp at Sabine River Bridge on I.H. 10 on Texas state side of river. 409-736-2540.

**Candy Cain Abshier WMA** In far southwestern Chambers County at Smith Point; from I.H. 10, take State Highway 61 south; turn south again on F.M. 562, go to Smith Point. 409-736-2551.

**Fanthorp Inn SHP** In Grimes County on State Highway 90, 10 miles east of Navasota. 409-873-2633.

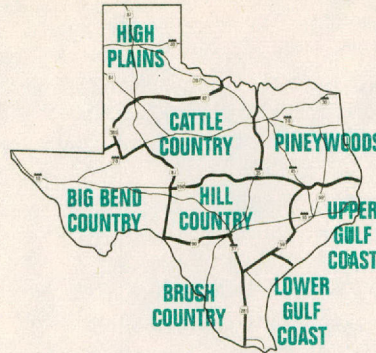
**Jasper SFH** In Jasper County, west of Jasper on F.M. 1747; 1 mile from the intersection of Highway 63 and F.M. 1747. 409-384-2221.

**Lake Livingston SP** In Polk County, 75 miles north of Houston. Take F.M. 1988 out of Livingston, then F.M. 3126 to the park. 409-365-2201.

**Lake Texana SP** In Jackson County about 4 miles from Ganado, between Highway 59 and F.M. 1593. 512-782-5718.

**Lower Neches WMA/Old River Unit** In Orange County, on southeastern city limits of Bridge City; off Old Ferry Road, surrounding Bailey's Fish Camp. 409-736-2551.

**Mad Island WMA** In Matagorda County. Take Highway 35 west of Bay City approximately 12 miles to F.M. 1095. Turn south (left) on F.M. 1095, travel approximately 12 miles, where F.M. 1095 makes a sharp right turn. Proceed .8 mile past sharp turn, then turn left onto paved road with Mad Island WMA sign, proceed 3 miles to "T", turn left and proceed approximately 2 miles on unpaved road to gate. Pass through gate and follow signs for 3 miles to WMA and check station. 512-576-0022.



**Martin Dies, Jr. SP/Angelina Neches/Dam-B** In Jasper County, between Woodville and Jasper on U.S. Highway 190. 409-384-5231.

**Peach Point WMA** In Brazoria County, 10 miles east of Brazoria or 8 miles west of Freeport on Highway 36, then 1 mile south to check station. 512-576-0022.

**Sea Rim SP** Located on State Highway 87 in the extreme southeast corner of the Texas coast near Louisiana; southwest of Port Arthur and northeast of Galveston via Port Bolivar Ferry. 409-971-2559.

**Varner-Hogg Plantation SHP** In Brazoria County, north of West Columbia off F.M. 2852. 409-345-4656.

**Village Creek SP** In Hardin County, 10 miles north of Beaumont in Lumberton. From Beaumont, take Highway 69 north towards Lumberton, take Mitchell Road exit just before the Highway 69 north/96 north split, turn right onto Mitchell Road take an immediate left onto Village Creek Parkway and go approximately 2 miles. Turn right on Alma Drive, cross tracks and turn left. Go approximately 4/10 mile and turn left into park. 409-755-7322.

**Washington-on-the-Brazos SHP** Located 21 miles northeast of Brenham. From Brenham, take Highway 105 to F.M. 912. 409-878-2214.

## Rio Grande/Brush Country

**Bentsen-Rio Grande Valley SP** In southwestern Hidalgo County near Mission, take U.S. Highway 83 to Mission, continue west to the exit on Inspiration road, travel 3 miles west on Business 83 to F.M. 2062. Continue south 3 miles to park entrance. 210-585-1107 or 210-585-0902.

**Chaparral WMA** In LaSalle and Dimmit Counties, 8 miles west of Artesia Wells on F.M. 133. 210-676-3413.

**Choke Canyon SP/Calliham Unit** In McMullen and Live Oak counties, about 70 miles south of San Antonio. On the north side of Highway 72, about 8 miles west of Three Rivers. 512-786-3868.

**Choke Canyon SP/South Shore Unit** In Live Oak County about 70 miles south of San Antonio, off Highway 72, just west of Three Rivers. 512-786-3538.

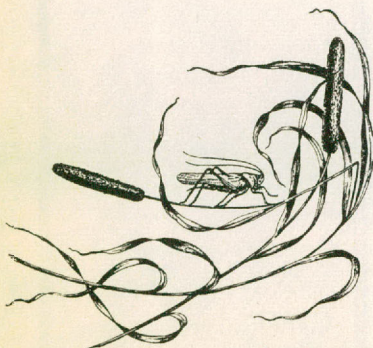
**Falcon SP** In both Starr and Zapata counties, 15 miles north of Roma by way of U.S. Highway 83, F.M. 2098 and Park Road 46 on the eastern shore of Falcon Reservoir. 210-848-5327.

**James E. Daughtrey WMA** In Live Oak and McMullen Counties on the north side of State Highway 72 between Three Rivers and Tilden. The check station is accessed via F.M. 16 north of Tilden 3 miles to F.M. 3445, then 5.5 miles east to the main entrance on the right. 512-274-3573.

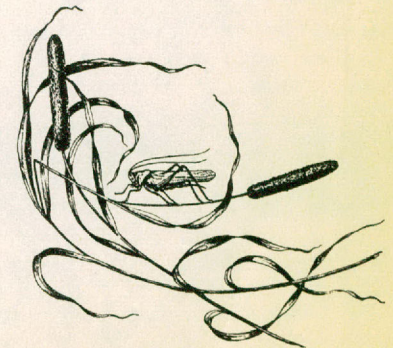
**Las Palomas WMA — Lower Rio Grande Valley Units** Twenty-two units located in Cameron, Hidalgo, Starr and Willacy Counties. 210-383-8982.

**Longoria Unit** In Cameron County, 5 miles north of Santa Rosa on Highway 506. 210-383-8982.

**Penitas Unit** In southeastern Hidalgo County, 8 miles west of Mission and 2 miles southeast of LaJoya on the Old Military Road. 210-585-1107. ♻️



*Call ahead before visiting a Wildlife Management Area!  
We don't want to miss you and we often leave our gates  
locked. Come visit us for our special events or on your own,  
but let us open the doors first! The best time to catch a  
biologist in an office is on a weekday early in the morning  
(8-9 a.m.) or during lunch on-account-of we work outside!*





# NATURE OUTINGS FOR WALKERS & HIKERS

## Austin/San Antonio/Hill Country

**Colorado Bend SP** Gorman Falls Tour - March, April & May every Saturday & Sunday. Caravan from park headquarters to the Gorman area of the park and then hike to below the falls. From the trail head, it's a one-and-a-half mile round-trip over beautiful Hill Country terrain. Substantial footwear with rubber soles is recommended. No pets allowed on tour. No restrooms or drinking water available in Gorman Falls area. 10 a.m. and 2 p.m. Saturdays and 10 a.m. on Sundays weather permitting, \$2 per adult, \$1 for children 6 through 12 years old, under 6 years old free. Activity fee may apply and entrance fee for non-TCP members, guides B. Paddie and J. Taylor, 915-628-3240.

**Guadalupe River SP** Woody Plant Identification - May 6, 27. Participants will learn to identify common woody plants of the Hill Country using an easy plant key, based on leaf characteristics. 2-4 p.m., fee \$5, reservations and TCP required, guide park naturalist P. Solis, 210-935-4012.

**Honey Creek SNA** Nature Walk - March 25. Two-mile trail walk along Honey Creek Canyon. Identify native plants, and discuss folklore and predator-prey relationships. 9-11 a.m., donations appreciated, guide naturalist A. Perry, TCP required, 210-438-2656.

**Honey Creek SNA** Native Grass Identification - April 29. Learn to identify cool season native grasses. 9-11 a.m., TCP required, guide W. Blackman, 210-438-2656.

**Honey Creek SNA** Ethnobotany Tour - April 8, 15; May 6, 20. Two-mile trail walk along Honey Creek Canyon to identify native plants and flowers; and learn cultural uses for food, medicine, and fiber. 9-11 a.m., donations appreciated, guide naturalist P. Solis, 210-438-2656.

**Honey Creek SNA** Lower Edwards Plateau Ecosystem Tour - April 1, 8; May 6, 20. Two-mile guided walk through Honey Creek Canyon with an interpretation of cultural, biological, and geological history of the Hill Country. 9-11 a.m., donations appreciated, guide park naturalist P. Solis, 210-438-2656.

**M.O. Neasloney WMA** Slide Show and Nature Trail Tour - May 27. 10 a.m.-2 p.m., reservations and TCP required, guide fish and wildlife technician D. Bujnoch, 210-875-9230.

**McKinney Falls SP** Wildflower Day - April 8. Guided walks, "T" painting, lectures and much more scheduled throughout the day to celebrate Spring wildflowers. Starts 9:30 a.m., guide park ranger R. Bohls, 512-243-2177.

**McKinney Falls SP** Wildflower Walk - April 15, 29. Stroll through the park and learn about the flowers that abound in the Spring. Starts 9 a.m., fee \$2 per adult, guide park ranger R. Bohls, 512-243-2177.

**Somerville WMA** Bird and Nature Walk - May 6. Walk the nature trails and identify birds, their calls, and woody plants. Meet at intersection of F.M. 141 and F.M. 1697, 13 miles north of Giddings. 8-11 a.m., reservations and TCP required, guide biologist J. Yantis, 409-279-2048.

## Corpus Christi/Lower Gulf Coast

**GCCA/CPL Marine Development Center** Birding Walk & Hatchery Tour/Slide Program - April 8; May 13. Guided nature walk around hatchery ponds and hatchery. Slide show presentation and tour of facility. 9-11 a.m., reservations and TCP required, guide hatchery manager T. Engeling, 512-939-7784.

## Dallas/Pineywoods

**Eisenhower SP** Spring Foliage - April 29. Experience the beauty of nature as she awakens. 1:30-2:30 p.m., reservations required, guide Dr. H. McCarley, 903-465-1956.

**Gus Engeling WMA** Sphagnum Peat Bog Interpretive Tour - April 29. Discussion and tour of sphagnum peat bog. Identify and photograph insectivorous plants. 8:30-noon, reservations and TCP required, guide adjunct professor of Sul Ross State University Dr. C. Rowell, 903-928-2251.

**Ray Roberts Lake WMA** Culp Branch Native Prairie Walking Tour - May 20. Participants will be guided on a walking tour of the Culp Branch Native Prairie restoration project at the Ray Roberts Lake WMA. Native prairie plant communities and associated wildlife species will be the focus. You will need to bring hiking footwear, cameras, binoculars, plant and animal field guides, insect repellent, drinking water and sack lunches, if such items are desired. 9 a.m.-1 p.m., reservations available but not required, guides wildlife technician S. Palmer and former president of the Native Prairies Association of Texas A. Davis, 817-437-5526.

**White Oak Creek WMA** Nature Tour - March 26; April 16; May 21. 1-3 p.m., fee \$1 per person, reservations and TCP required, guide conservation specialist J. Thomas, 903-884-3833.

## El Paso/Big Bend Country

**Big Spring SP** Nature Walk - May 27. Take a nature walk with the park manager and discover century old rock carvings on "Scenic Mountain." Learn about local plants, plant uses, fauna, geology and history. Watch the sun set from the top of our 200-foot bluff! 8-9:15 p.m., reservations and TCP required, guide park manager R. Alton, 915-263-4931.

## Fort Worth/Cattle Country

**Cleburne SP** Coyote Run Nature Trail Walk - May 7. Interpretive walk with discussion on wildflowers, insects and other animals seen on the trail. 10-11:30 a.m. and 2-3:30 p.m., reservations required, guide park ranger D. Owens, 817-645-4215.

## Houston/Upper Gulf Coast

**Village Creek SP** Guided Nature Trail Hike - April 8; May 13. 9-11 a.m., fee \$2 adults \$1 children 6-12 yrs. plus \$3 vehicle entrance permit (vehicle entrance fee waived with TCP or Parklands Passport), reservations available but not required, guide park naturalist J. Rashall, 409-755-7322.

**Washington-on-the-Brazos SHP** Wildflower Walks - April every Saturday & Sunday. Come along on a wildflower walk to see what's blooming! Participants will learn how to identify flowers and their family characteristics, and explore their natural histories and folklore. 11 a.m. and 1 p.m., free to TCP members all others \$3 adults and \$1.50 per student, presented by park interpreters and special guest from Agricultural Extension Service B. Rector, 409-878-2214.

## Rio Grande/Brush Country

**Chaparral WMA** Chaparral Eco-Tour - May 6. Presentation given on WMA area, Texas horned lizard and Texas tortoise. Visitors will be able to birdwatch, view wildflowers and walk or drive three nature trails. 10-11 a.m., reservations and TCP required, guide conservation scientist J. Rutledge, 210-676-3413.

**Choke Canyon SP/Calliham Unit** Wildflower and Native Plant Tour - March 25; April 8. 1-3 p.m., reservations required, guide conservation specialist T. Smith, 512-786-3868. ♻️



# SCHEDULE YOUR OWN OUTINGS



## PASSPORT VALUES<sup>SM</sup>


**New Canaan Farms Jam Hour** TCP families are invited to a free music show every Saturday from 6 to 8 p.m. at New Canaan Farms, seven miles west of Dripping Springs on Hwy. 290 in the Hill Country. Doc Toler & The Sugar Pills host the two-hour guitar, fiddle and story-telling program which is broadcast, live, on KFAN radio from 7 to 8 p.m. BBQ plates are sold. The Gift Shop and Country Bakery is open seven days a week and TCP members are welcome to tour the facilities. Current TCP members receive ten percent discounts on purchases of New Canaan Farms jams and jellies any time. Call 1-800-727-5267 for information.

**Club Novaterra on the Mexican side of Falcón Lake.** TCP members receive a 15 percent discount on all fees. Free, 4-hour boat rental when you stay more than three nights. The area includes botanical gardens, trails, primitive and RV camping, Pueblo-style cabins and outstanding birdwatching and fishing. For information call (83)42-13-30 or 42-70-31 in Monterrey, México.

Call the following places for information on continuing benefits to TCP members:

**Fossil Rim Wildlife Center**  
817-897-2960.

**Longhorn Cavern State Park**  
512-756-6976.

**Running 'R' Ranch**  
210-796-3984. 

### Atkinson Island WMA

Unvegetated beach areas. No facilities. 409-736-2551.

### Big Bend Ranch SNA

Conservation Passport required north of Highway 170 where hiking and backpacking are available. South of Highway 170, either the Conservation Passport or the daily entrance fee is acceptable. For information call the Barton Warnock Environmental Education Center. 915-424-3327 or Fort Leaton State Historic Park 915-229-3613.

### Candy Cain Abshier WMA

Area primarily for bird watching and nature study. No facilities. 409-736-2551.

### Colorado Bend SP

Wildlife viewing at baited area, predawn to noon or until dusk if others not waiting to use the blinds, additional fee, reservations available but not required, limited number of blinds make it necessary to only accept reservations in person at park headquarters, \$2 per person activity fee. 915-628-3240.

### Davis Mountains SP

Experience back country hiking in the Davis Mountains, 8-10 mile trail climbs to a spectacular overlook with a 360° panorama, reservations not required. 915-426-3337.

### Devils River SNA

Guided tour of archeological pictograph sites and natural sites upon request, Fridays-Sundays, groups encouraged, primitive camping and bunkhouse lodging for 10 people and kitchen available. 210-395-2133.

### Granger WMA

Approximately 35 miles of trails crisscross the Blackland Prairie accessible by entering at TPWD registration boxes 1-7 around Granger Lake. Tall prairie grasses, fishing, and birding (see if you can spot a Ring-necked Pheasant) await the adventurous hiker and mountain biker. Pick up area maps at Corps of Engineers headquarters at the dam. 512-859-2668.

### Gus Engeling WMA

Two interpretive nature trails, one for walking and one driving, are open throughout the year. 903-928-2251.

### Kickapoo Cavern SNA

Bird watching and nature tours upon request, primitive cavern tour by special arrangement, groups encouraged, bunkhouse lodging for 14 people and kitchen available, please make reservations at least one week in advance. Texas Conservation Passport required per person (17 years or older) to enter park. 210-563-2342.

### Las Palomas WMA/

#### Lower Rio Grande Valley Units

Units of Las Palomas open for birding or wildlife viewing on your own September 1 - April 30 are: Anacua, Baird, Carricitos, Longoria (west side only), Penitas and Taormina. No facilities. 210-383-8982.

#### Lower Neches WMA/Bessie Heights Unit

Accessible by boat only. No facilities. 409-736-2551.


### Richland Creek WMA

Six miles of driving and walking trails open except during special permitted gun hunts. Observe wading birds from shallow-water marsh compartments on the 4,000-acre north unit between April and August. There are no facilities. 903-928-2251.

### Walter Buck WMA

Activities coordinated through South Llano River SP. 915-446-3994.

### Welder Flats Coastal Preserve

This area is entirely submerged land, so access is by boat. ALL shoreline area is privately owned and is NOT part of the preserve. Please do not trespass on private land and do not disturb the whooping cranes. 512-576-0022. 

*Texas Conservation Passport Journal* is your passport to the real Texas.

Texas Conservation Passports cost \$25 each and gives you:

- this *Passport Journal* with listings of events and explorations,
- discounts on some event fees,
- Passport Values<sup>SM</sup> with selected retailers,
- free vehicle entry to Texas State Parks,
- a discount on your subscription to *Texas Parks & Wildlife* magazine,
- guided access to WMAs and other undeveloped lands.

We want to hear from you!

Please send your comments, complaints and suggestions to:

**Texas Conservation Passport**  
4200 Smith School Road  
Austin, TX 78744  
FAX 1-512-389-8029

If you would care to use any of our published information contact us. We are:

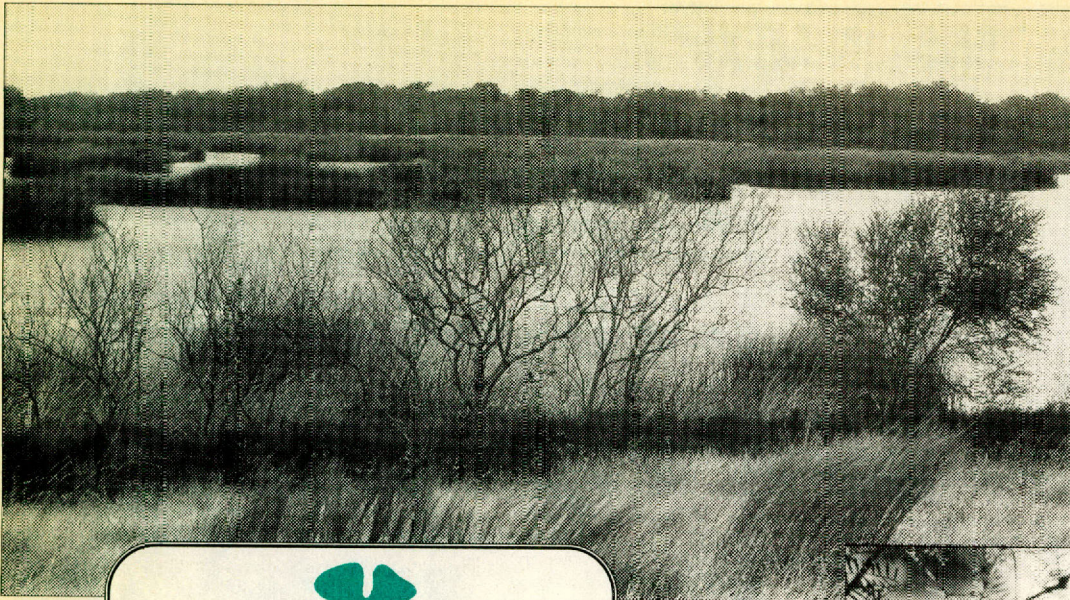
Emily Carter, Editor  
Kim Hales, Events Editor  
Dawn Dittman, Marketing Director  
Linda Adkins, Creative Director  
Linda Wells, Graphic Designer

*TEXAS CONSERVATION PASSPORT JOURNAL* (USPS Pending) is published quarterly by the Texas Parks and Wildlife Department, 4200 Smith School Rd., Austin, TX 78744. The \$25 membership fee includes the \$4.95 annual cost of this publication. Application to mail at the second-class postage rates is pending at Austin, Tx.

POSTMASTER:

Send address changes to  
*"Texas Conservation Passport Journal"*  
4200 Smith School Rd.  
Austin TX 78744.





GLEN MILLS



McGuill Lake lies in an ecotone, a place where biotic provinces overlap creating a unique blend of wildlife; the Tamaulipan, Chihuahuan, Kansan and Austro-Riparian biotic regions overlap on the Fennessey Ranch. As a fresh-water-wetland on the edge of an arid biotic region, McGuill Lake is sustained with an irrigation well to provide food, nesting and cover for water-fowl, cranes, raptors, coyote, bobcat, wild pigs, armadillo, white-tailed deer and other wildlife.

## WILDLIFE PHOTO WORKSHOPS AT THE FENNESSEY RANCH



GLEN MILLS

The Fennessey Ranch, located in the Gulf Coast brush country where the Mission River empties into Mission Bay, has endured since Tom O'Connor laid out his portion of a Spanish Land Grant in 1834. Cattle ranching and oil production boomed then busted in the intervening 161 years but the O'Connor family persevered with the land.

Today, ranch operations encourage wildlife diversity by employing multi-use land-management practices and by taking advantage of global technologies such as the power-fence system developed in New Zealand. Although not new, rotational cattle grazing is practiced at the Fennessey to replicate the historic relationship between buffalo herds and grassland propagation. Controlled prairie fire helps regenerate native plant communities. Food plots, specially planted for wildlife, draw an abundance of mammals, reptiles and birds to the ranch. For example, over 400 species of birds stop over or nest on the Fennessey.

Now TCP members and others can join award-winning outdoor

photographer, Leroy Williamson for Wildlife Photo Workshops in April and May. Participants will meet at the ranch near Bayside a little before sunrise. After a briefing on the day's activities and photo instruction, everyone will head out to brush blinds for field photography. A catered picnic lunch at a spot overlooking the Mission River will be followed by an extensive afternoon session on micro-photography and wildlife-calling and a return to the blinds for a twilight photo shoot. Participants need to bring binoculars, insect repellent, long pants, camera, lenses, and a chair/stool for use in the blinds.

Six workshops, limited to 20 participants each, are scheduled April 22, 23, 29 and 30; May 6 and 7; fee \$125 for TCP members, \$150 for others. Call the 24-hour voice mail and leave your name, address and phone number to make reservations and receive more detailed information: (512) 529-6600; or write: Fennessey Ranch Tours, P.O. Box 177, Refugio, TX 78377.

*Bobcats (Lynx rufus) cope with human competition for living space and they thrive on the Fennessey Ranch in south Texas.*



For information on purchasing a Texas Conservation Passport call 1-800-792-1112 8 a.m.-5 p.m. Monday - Friday



# PASSPORT EXPLORATIONS<sup>SM</sup> IN MÉXICO

Texas Conservation Passport members can choose any or all of three explorations south of the border. Last year we went to El Cielo for a Cloud Forest Adventure and it was so successful we have added two new options.

All three outings focus on the relationships between the environmental resources of Texas and México, exploring them in a cultural context. The travelers enjoy regional foods, guided hikes by Mexican biologists and naturalists, evening musical entertainment or chats with local folks, bed & breakfast lodging, museum visits and shopping.

Mountains, scenic beauty and unique resources weave a common thread through our Mexican explorations. And, most of the sites are visited with permission of private landowners who willingly share the natural experience with outsiders. Since these trips will be offered on a regular basis during 1995, you can request our Texas-México brochure by FAX, 512-389-8029, or by phone, 512-389-4901.

**El Cielo Cloud Forest Adventure** - May 7-12. Bus tour from McAllen to El Cielo, a United Nations biosphere reserve, 300 miles south of Brownsville; activities: high-altitude hiking, bird-watching, cultural events. Fee \$750 per person. Reservations required.

**Coahuila Exploration** - May 10-14. Departing Laredo by bus to tour the wetlands at Cuatrociénegas Reserve, excavations at Dinosaur Hill; will stay in cabins, hike trails on the rim of Sierra

Arteaga and see the Birds of México Museum in Saltillo. Fee \$600 per person. Reservations required.

**Nuevo León Exploration** - May 21-26. Departing Falcon SP to visit Club Novaterra to see the remarkably diverse Sierra Picachos, Los Encinos and Rayones in the heart of the Sierra Madre. Focuses on bird-watching. Includes swimming, nature study, and hiking trails of varying difficulty. Fee \$700 per person. Reservations required.



CLEVE MILLS

*Rayones in the heart of the Sierra Madre.*



See Fennessey Ranch Wildlife Photo Workshops on page 15



FRANK AGUIAR

*Bobcats (Lynx rufus), a medium-sized, short-tailed, reddish brown or grayish cat, are about the size of a chow dog and can be found statewide. They frequently leave cover and begin hunting wood rats, ground squirrels, mice and rabbits long before sundown; so, even though they are nocturnal creatures, they are relatively available to outdoor photographers.*

TEXAS  
CONSERVATION  
PASSPORT  
JOURNAL  
4200 Smith School Road  
Austin, TX 78744



Dispersal of the publication conforms with Texas State Documents Depository Law, and it is available at Texas State Publications Clearinghouse and/or Texas Depository Libraries.

PWD-BR-C2000-144-3/95