

REPORT



to employees concerning people, programs and progress
of the Texas Department of Mental Health and Mental Retardation

Vol. 2

November, 1970

No. 11

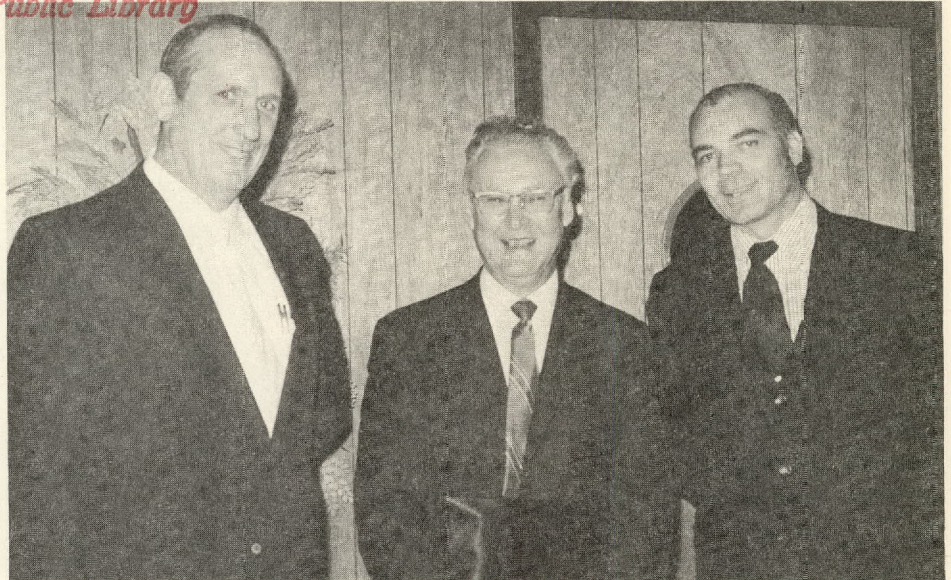
TDMHMR Co-Hosts *Document Department* Commissioner Praises NAAAP Convention *NOV 12, 1970* Volunteers' Efforts In San Antonio *Dallas Public Library*

The Texas Department of Mental Health and Mental Retardation co-sponsored the 21st annual meeting of the North American Association of Alcoholism Programs in San Antonio September 27-October 2.

More than 50 professional personnel from TDMHMR attended the meeting. The Texas Commission on Alcoholism was official host organization.

The abuse of all sedatives, including alcohol, was discussed by nationally-known authorities at seminars conducted during the six-day conference.

Membership in the organization is composed of governmental agencies in the U.S. and Canada.



PROGRAM PARTICIPANTS at the recent convention of the Volunteer Services Council for Texas State Hospitals and Special Schools included (l-r) R.V. Welch Jr., immediate past chairman; David Wade, M.D., Commissioner, TDMHMR; and Fred Bell, 1971 chairman.

David Wade, M.D., Commissioner, TDMHMR, has commended the state's volunteer workers for their flexibility in meeting the needs of the retarded and the mentally ill.

The Commissioner characterized volunteers as "the man who came to dinner, brought the steak, helped prepare the meal, and stayed on to help do the dishes and sweep out."

Dr. Wade was keynote speaker at the 12th annual meeting of the Volunteer Services Council for Texas State Hospitals and Special Schools at South Padre Island, October 8-10.

Quarterly meetings with the council's officers to exchange ideas on treatment and care were suggested by the Commissioner as a means of strengthening the ties between the council and his office.

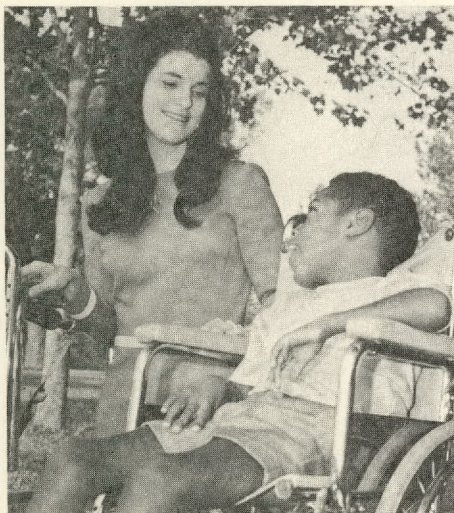
Dr. Wade applauded the volunteers for their empathy, warmth and

genuineness in influencing the behavior of those the Department serves.

He referred to a 10-point "Bill of Rights for Volunteers" and a Code of Responsibility as the foundation for building the strongest relationship between their organization and the institutions.

Over 170 delegates from 26 volunteer programs around the state attended the three-day meeting. R.V. Welch Jr., state chairman from Lufkin, presided.

New state officers of the group include Fred Bell, Austin, chairman; Mrs. Ernest Long, San Benito, vice-chairman for TB hospitals; LeRoy Bell, Abilene, vice-chairman for special schools; Mrs. E.M. Braselton, Midland, vice-chairman for mental hospitals; Roland R. Crutcher Jr., San Antonio, treasurer; and Major Rolan Chambless, Austin, secretary.



MRS. PATRICK NUGENT, shown with Jeffrey Tripp of Travis State School, was honorary co-chairman of a benefit dinner and style show October 23. Goal is a \$45,000 specially-equipped pool which can be used by wheelchair-bound Travis residents.



CORPUS CHRISTI State School students were welcomed back to the school September 28 by staff members. Students were evacuated to TDMHMR facilities at Austin August 4 when the Corpus school was extensively damaged by Hurricane Celia.

PERSONAL MENTION

Recent staff appointments at Vernon Center include **Ed R. Patt**, psychologist; **James D. Brittnacher**, coordinator of outreach services; **Mrs. Mary Meeks**, rehabilitation supervisor; **Terry Daberkow**, **Mrs. Helen Harwell** and **Mrs. Sonya Sewall**, case workers.

Miss Hazel Casler, information specialist, Central Office, has been elected national president of the National Association of State Psychiatric Information Specialists.

Robert W. Waddell has been named general consultant to the Regional Programs Division, Central Office.

Appointments to the staff of Rusk State Hospital include **Alma Freeman**, M.D., clinical director; **Emmett G. Ward**, M.D., psychiatrist; **Fagan Thompson**, Ph.D., chief clinical psychologist; and **Jack Williams**, coordinator of adolescent services.

Gerald A. Lively, M.D., has joined the staff of Abilene State School as a physician.

"Three Summers: Experiments in Temporary Residential Care of Retardates" by **Ed Cole**, chief of casework services at Abilene State School, has been published in the Training School Bulletin of the American Institute for Mental Studies.

New staff members of Corpus Christi State School include **Roger C. Frank Jr.**, business manager and **Richard Smith**, personnel officer.

Don Kirkpatrick, Ph.D., has been named director of Mexia State School's research project, "Criminal Justice and Mentally Retarded Offenders."

Alfred W. Davis has joined the staff of Terrell State Hospital as assistant personnel officer.

SERVICE AWARDS

Charlie Dolle, warehouse supervisor at Austin State School, has retired after 42 years service.

DEATHS

William V. Horbaly, M.D., assistant superintendent of Terrell State Hospital.

MR/MR Workers Discuss Motivation, Recreation

New ideas and approaches for workers with the mentally retarded were stressed at a recent workshop at Kerrville State Hospital.

Attending were sixty-five representatives from the staffs of San Antonio State Hospital, Austin State Hospital, the Kerrville MH/MR Center, Kerrville Special Opportunities School and Kerrville Schools Special Education programs.

Demonstrations of recreation and motivation methods included games, relays and camping. Other activities and

physical exercises with simple tools were also outlined.

Leaders of the one-day program included **Charles Warford**, program developer, Amarillo State Center for Human Development; **Larry Cotten**, professor, North Texas State University; and **Charles Chadwell**, rehabilitation consultant, TDMHMR Central Office, Austin.

United Fund Campaign Underway

TDMHMR facilities across the state are currently participating in 1970-71 United Fund, Community Chest or United Way campaigns in their local areas.

September, October and November have been designated by the Governor as Campaign Months in Texas.

Last year's United Community Campaigns in Texas raised over \$40 million. Many of the agencies supported by the campaigns are involved in health and welfare activities directly associated with the mission of TDMHMR.

Because they consolidate numerous individual agency drives, the campaigns provide support for many service activities through a one-time appeal for contributions.

San Angelo Center Residents Get Miniature Golf Course

Six Lions Clubs in San Angelo and Carlsbad have completed a fund drive for construction of a miniature golf course on the campus of San Angelo Center.

The Lions Clubs, working jointly on the project, raised \$1,800, which will be used for concrete and equipment. The Center's maintenance department will provide the labor.

The nine-hole course will become part of a proposed complete recreation center for the residents.

At Lufkin State School

Sheltered Workshop Opens

Lufkin State School has expanded its rehabilitation services to provide an evaluation and training center, or sheltered workshop, for 50 of its residents.

The project is administered by the Texas Rehabilitation Commission. The number of residents involved in the program will eventually be increased from 75 to approximately 175 and training will be made available to non-residents.

Perry Carter, project director, said "Although it is still in the developmental stages, the center is already considered the hub of rehabilitation activities at the Lufkin facility. It provides a focal point for the rehabilitation counselor to evaluate and train all clients appearing to have potential for employment outside the institution."

The center's programs are designed to prepare individuals for independent living in the community through personal, social and work adjustment training. Participants are introduced to such concepts as inspection and quality control; the relationship between their effort, production and earnings; values that the staff, as representatives of society, place upon labor; shop discipline;

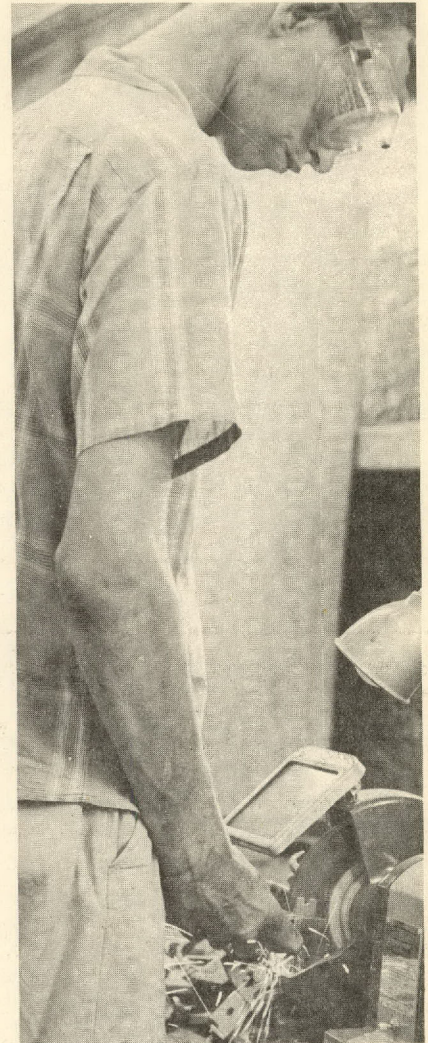
and assembly line and group methods of production.

Work experiences are provided by contracts with a local fishing lure manufacturer, a foundry and a nearby university. The trainee's task might be molding hot lead into sinkers, operating a drill press or working as a custodian. In each case a special effort is made to see that all work experiences are as realistic as possible. For example, each trainee is paid according to his production.

"The resident may be able, eventually, to leave the school to live and work, or the non-resident may get the training he'll need later to stay in the community. This, in effect, is what the program seeks to accomplish," Carter said.



RETARDATES at the Lufkin workshop receive on-the-job experience utilizing actual production line methods.



GOOD WORK habits and safety are stressed in all job assignments in the program.

Rio Grande Center Opens MH Clinic In Brownsville

The Rio Grande State Center for MH/MR, Harlingen, has opened a new mental health clinic at the city hall in Brownsville.

Services offered by the Brownsville clinic include outpatient services, individual therapy and group therapy. The clinic provides continuity of care for patients discharged from the hospital unit in Harlingen and also provides evaluation services in conjunction with the county court.

Rio Grande staff members working at the Brownsville clinic include Jorge Cardenas, M.D., psychiatrist and medical director; Barcus Nunley, MSSW, psychiatric social worker; and Miss Estella Perez, caseworker. Max Smith, ACSW, is the director of the unit which serves Cameron and Willacy Counties.

Clinical Pastoral Trainees

The Clinical Pastoral Education program at San Antonio State Hospital recently graduated its first class of five trainees.

The program is nationally accredited by the Association for Clinical Pastoral Education. Graduates are fully qualified to become institutional chaplains.

The year-long program is an extension of theological education in a

clinical setting, said Kenneth B. Dial, Th.D., chaplain supervisor at the hospital. First pastoral trainees graduating from the program were from Catholic, Church of Christ and Presbyterian denominations.

In addition to the clinical pastoral education program, the hospital is also offering a course for area ministers in pastoral care for the mentally ill. The course meets one day per week for 10 weeks.

WHO'S WHO IN TDMHMR

Supervisor: Community Facilities Construction J. Eugene McKee

J. Eugene McKee supervises the Community Facilities Construction Division of the Texas Department of Mental Health and Mental Retardation.

The division administers federal grant programs to assist communities, other public bodies and private organizations in constructing mental retardation facilities and community mental health centers.

Aided by an 11 member advisory council, the division prepares annual state construction plans which depict existing services and facilities throughout the state, describe construction and operating standards, establish priority systems for allocating available funds and outline the procedures for



submitting applications.

Staff members assist applicants in documenting eligibility, preparing applications and describing programs.

Division personnel provide consultation in architectural design and complying with construction standards. The division also inspects construction and performs final project audits.

McKee, a state employee since 1963, is a graduate of The University of Texas, a registered architect and licensed professional engineer.

Before joining TDMHMR in 1966, he was employed by the State Building Commission. He reports to the assistant to the commissioner.

(This is the fourteenth in a series of articles explaining the role of administrators in the Texas Department of Mental Health and Mental Retardation.)

\$200,000 All-Faith Chapel Is Project of Volunteers At Austin State Hospital

A campaign to raise \$200,000 for construction of an All-Faith Chapel at Austin State Hospital has been started by the hospital's Volunteer Services Council.

Plans for the chapel have been donated by the Austin architectural firm of O'Connell & Probst. A large worship center for 300 people, a small chapel, a library and offices are included in the plans.

Worship services are currently being conducted in the hospital's recreation center.

Funds for the chapel construction must be obtained through private subscriptions since the state cannot appropriate monies for religious facilities.

State School Entries Take Honors At Fair

Residents of the Abilene State School recently won 15 awards in nine divisions at the 1970 West Texas Fair in Abilene.

The awards were for craft and hobby work on display in the Woman's Building at the fair.

Residents of the school placed among the top three winners in leather, paper mache and miscellaneous work in the Youth Hobbies Division; crochet, table cloths and needle point in the Needlework Division; and pillow cases, rugs and weaving in the Ladies over 70 Division.

Student Activity Center Is Authorized For Mexia

A proposed student activity center for Mexia State School has been authorized by the Texas Board of Mental Health and Mental Retardation.

The center, a special project of the Volunteer Council at the Mexia facility, will become state property upon completion.

Volunteer Council spokesmen said the center will be financed by a contribution from the Texas Foundation

for Mental Health and Mental Retardation, donations received by the council and a federal grant.

The activity center, to be operated by the Department, will provide facilities for the school's music and chaplaincy programs and will be used for individual and group activities, counseling and orientation.

Texas Department
of Mental Health
and Mental Retardation



David Wade, M.D.
Commissioner

Box 12668, Capitol Station
Austin, Texas 78711
512 454-3761