

W 2 200.6
Em 74
2010/1951

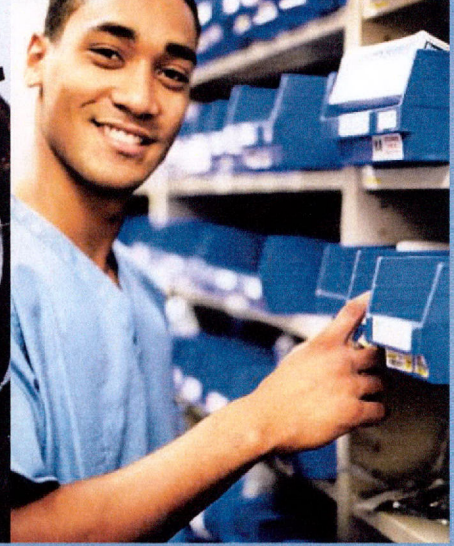
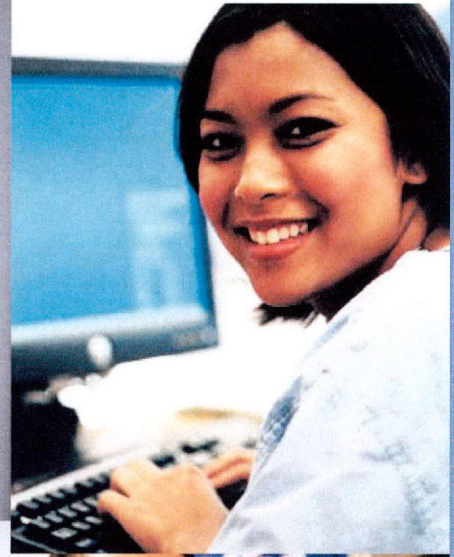
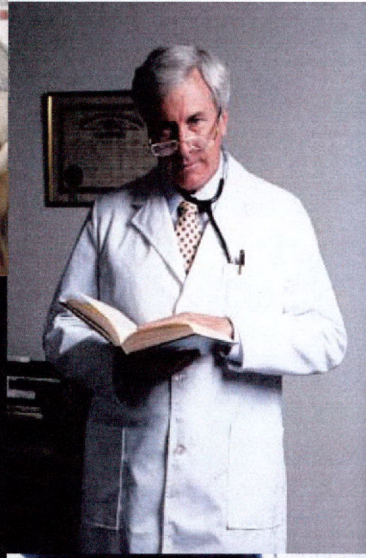
Government Publicatio.
Texas State Documents

✓ JAN 20 2011

Depository
Dallas Public Library

FIRST QUARTER 2010

TEXAS QUARTERLY CENSUS OF EMPLOYMENT & WAGES



by Industry and County



Prepared by the Labor Market & Career Information
Department, Texas Workforce Commission

Quarterly Census of Employment and Wages by Industry & County

Employment and Payroll under the Texas Unemployment Compensation Act

Description of the Data

This publication contains employment data, payroll data, and average weekly wages by county for the specified quarter. These data were compiled from quarterly employment and wage reports submitted by employers subject to the Texas Unemployment Compensation Act. Quarterly average employment data have been tabulated by industry according to the North American Industry Classification System (NAICS) manual (see Industry Classification below) on a statewide and county basis. Payroll data represent the total wages paid by the establishment during the quarter. Total wages are provided for each county and by industry for the state. Average weekly wage data are computed from employment and total wages reported by all establishments as well as just those establishments subject to the Texas Unemployment Compensation Act. Average weekly wages are not to be confused with "prevailing" wage rates in various industries.

Industry Classification

Since the release of first quarter 2001 data, industry information has been provided under the newer North American Industry Classification System (NAICS). Beginning with first quarter 2007 data, the Texas Workforce Commission (TWC) released Quarterly Census of Employment and Wage (QCEW) data using the NAICS 2007 revision. The purpose of this revision was to keep up with new and emerging technology industries. This revision was minor in the scope of the QCEW data set, as 12 NAICS 2002 codes became obsolete, and 6 NAICS 2007 codes were established. Because there were no plans for historical reconstruction of the data series, a series break occurred, canceling the ability for a time series analysis for those selected industries. For more information on the new NAICS 2007 code changes, see the following web link: <http://www.census.gov/epcd/www/naics.html>.

Definition of covered employment, wages, and average weekly wage

Covered employment is the number of workers employed by employers subject to the Texas Unemployment Compensation Act during the pay period which included the 12th day of the month. Excluded from coverage are employment covered by the Railroad Retirement Act, self-employed, and unpaid family members.

The payroll data (total wages) used in this publication includes all wages and salaries paid to covered employees by their employers including bonuses, commissions, and cash values or remuneration received in any medium other than cash.

The average weekly wage is the numeric calculation of total wages for the county divided by the number of employees in the county, divided by the number 13 (the weeks in a quarter). This figure is listed in Table 3 for those establishments that are covered by the Texas Unemployment Compensation Act, and for all employers (those covered plus Federal Government employment).

NAICS Industry Structure

The NAICS industry hierarchy classifies data to the six-digit level. The first level consists of the Goods-Producing and Service-Providing industries. Below this is the Super Sector level. The third layer is the Sector level. Statewide data is published at both the Super Sector and Sector levels. Data for the 254 Texas counties are published at the Super Sector level only.

NAICS Sector Aggregation Tree

	SUPER SECTOR	SECTOR	
Total Employment	Goods-Producing Industries	(A) Natural Resources & Mining Group	Sector 11 - Agriculture, Forestry, Fishing and Hunting
			Sector 21 - Mining
		(B) Construction	Sector 23 - Construction
		(C) Manufacturing	Sector 31-33 - Manufacturing
			Sector 22 - Utilities
		(D) Trade, Transportation, and Utilities Group	Sector 42 - Wholesale Trade
			Sector 44-45 - Retail Trade
			Sector 48-49 - Transportation and Warehousing
		(E) Information	Sector 51 - Information
		(F) Financial Activities Group	Sector 52 - Finance and Insurance
			Sector 53 - Real Estate, Rental and Leasing
			Sector 54 - Professional, Scientific and Technical Services
		(G) Professional and Business Svcs. Group	Sector 55 - Management of Companies and Enterprises
			Sector 56 - Administrative and Support, Waste Mgmt. and Remediation Svcs.
Service-Providing Industries		(H) Education & Health Services Group	Sector 61 - Educational Services
			Sector 62 - Health Care and Social Assistance
		(I) Leisure & Hospitality Group	Sector 71 - Arts, Entertainment, and Recreation
			Sector 72 - Accommodations and Food Services
		(J) Other Services	Sector 81 - Other Services (ex. Public Adm.)
	(K) Public Administration	Sector 92 - Public Administration	
	(L) Unclassified	Sector 99 - Unclassified Establishments	

**Table 1. State Summary
Employment and Total Payrolls by Industry
First Quarter 2010**

Industry Group	Industry Code	UI Accounts	Reporting Units	Employment Month 1	Employment Month 2	Employment Month 3	Qtr. Average Employment	Total Wages	Average Weekly Wage
Agriculture, Forestry, Fishing & Hunting	11	9,109	9,302	55,216	54,134	55,561	54,970	\$358,884,612	\$502.21
Crop Production	111	3,731	3,769	18,998	19,224	20,172	19,465	\$109,552,902	\$432.95
Animal Production	112	3,618	3,679	22,179	22,069	22,282	22,177	\$156,507,538	\$542.87
Forestry and Logging	113	275	281	1,832	1,782	1,777	1,797	\$17,772,877	\$760.79
Fishing, Hunting and Trapping	114	130	130	375	371	383	376	\$2,643,428	\$540.32
Agriculture & Forestry Support Activity	115	1,365	1,443	11,832	10,688	10,947	11,156	\$72,407,867	\$499.28
Mining, Quarrying, and Oil and Gas Extraction	21	6,846	8,485	190,819	192,968	194,950	192,912	\$6,648,733,579	\$2,651.16
Oil and Gas Extraction	211	3,335	4,058	80,049	80,287	80,475	80,270	\$4,264,752,764	\$4,086.91
Mining (except Oil and Gas)	212	292	398	9,320	9,338	9,476	9,378	\$132,572,394	\$1,087.43
Support Activities for Mining	213	3,255	4,029	101,450	103,343	104,999	103,264	\$2,251,408,421	\$1,677.11
Utilities	22	1,059	1,879	47,931	47,975	48,381	48,096	\$1,232,790,107	\$1,971.70
Utilities	221	1,059	1,879	47,931	47,975	48,381	48,096	\$1,232,790,107	\$1,971.70
Construction	23	40,903	43,795	554,353	551,874	560,014	555,414	\$6,428,212,867	\$890.29
Construction of Buildings	236	11,068	11,910	129,272	129,624	131,519	130,138	\$1,905,991,157	\$1,126.61
Heavy and Civil Engineering Construction	237	3,968	4,338	107,983	106,392	107,461	107,279	\$1,434,862,145	\$1,028.85
Specialty Trade Contractors	238	26,032	27,547	317,098	315,858	321,034	317,997	\$3,087,359,565	\$746.83
Manufacturing	31-33	19,767	23,080	806,675	805,408	807,433	806,505	\$12,758,406,306	\$1,216.87
Food Manufacturing	311	1,541	1,763	89,144	88,417	88,635	88,732	\$780,508,814	\$676.63
Beverage & Tobacco Product Manufacturing	312	205	298	11,122	11,131	11,237	11,163	\$163,688,841	\$1,127.93
Textile Mills	313	104	106	2,483	2,432	2,447	2,454	\$21,220,987	\$665.19
Textile Product Mills	314	492	506	6,100	5,976	5,942	6,006	\$37,734,325	\$483.29
Apparel Manufacturing	315	272	278	4,530	4,475	4,462	4,489	\$34,870,676	\$597.54
Leather and Allied Product Manufacturing	316	141	148	3,954	3,954	4,019	3,976	\$27,360,610	\$529.39
Wood Product Manufacturing	321	654	758	19,328	19,194	19,309	19,277	\$173,420,146	\$692.02
Paper Manufacturing	322	245	315	17,579	17,586	17,653	17,606	\$254,885,170	\$1,113.63
Printing and Related Support Activities	323	2,052	2,197	28,576	28,454	28,509	28,513	\$287,951,770	\$776.84
Petroleum & Coal Products Manufacturing	324	174	249	24,723	24,867	24,814	24,801	\$778,522,510	\$2,414.64
Chemical Manufacturing	325	1,041	1,399	70,140	70,385	70,403	70,309	\$1,723,744,568	\$1,885.89

Table 1. State Summary
Employment and Total Payrolls by Industry
First Quarter 2010

Industry Group	Industry Code	UI Accounts	Reporting Units	Employment Month 1	Employment Month 2	Employment Month 3	Qtr. Average Employment	Total Wages	Average Weekly Wage
Plastics & Rubber Products Manufacturing	326	738	853	36,728	36,769	36,924	36,807	\$397,717,027	\$831.19
Nonmetallic Mineral Product Mfg	327	839	1,194	33,122	33,069	33,057	33,083	\$352,523,258	\$819.68
Primary Metal Manufacturing	331	380	412	19,038	19,212	19,312	19,187	\$246,944,221	\$990.01
Fabricated Metal Product Manufacturing	332	4,240	4,611	110,263	110,188	110,590	110,347	\$1,360,403,746	\$948.34
Machinery Manufacturing	333	1,777	2,180	83,346	83,737	84,127	83,737	\$1,563,997,888	\$1,436.74
Computer and Electronic Product Mfg	334	1,160	1,361	97,547	96,707	96,728	96,994	\$2,434,668,559	\$1,930.86
Electrical Equipment and Appliances	335	427	479	16,860	16,717	16,817	16,798	\$236,374,121	\$1,082.43
Transportation Equipment Manufacturing	336	858	967	82,477	82,503	82,949	82,643	\$1,409,896,747	\$1,312.31
Furniture and Related Product Mfg	337	1,074	1,106	22,609	22,583	22,563	22,585	\$185,844,313	\$632.97
Miscellaneous Manufacturing	339	1,830	1,900	27,006	27,052	26,936	26,998	\$286,128,009	\$815.24
Wholesale Trade	42	35,073	41,720	487,551	488,024	489,710	488,428	\$8,399,931,946	\$1,322.91
Merchant Wholesalers, Durable Goods	423	15,978	19,892	274,307	274,332	274,592	274,410	\$4,632,068,911	\$1,298.47
Merchant Wholesalers, Nondurable Goods	424	7,305	9,247	153,541	153,831	154,393	153,922	\$2,394,241,854	\$1,196.53
Electronic Markets and Agents/Brokers	425	11,972	12,581	59,703	59,861	60,725	60,096	\$1,373,621,181	\$1,758.23
Retail Trade	44-45	42,418	70,502	1,118,803	1,108,147	1,118,335	1,115,095	\$7,175,834,786	\$495.01
Motor Vehicle and Parts Dealers	441	6,455	8,979	137,565	137,928	139,336	138,276	\$1,382,604,717	\$769.14
Furniture and Home Furnishings Stores	442	2,476	3,531	37,347	36,851	36,883	37,027	\$283,936,672	\$589.87
Electronics and Appliance Stores	443	2,126	3,491	43,377	42,256	42,088	42,574	\$394,596,753	\$712.97
Building Material & Garden Supply Stores	444	3,090	4,887	84,053	85,934	89,816	86,601	\$637,396,713	\$566.17
Food and Beverage Stores	445	6,378	8,346	201,154	201,372	200,942	201,156	\$1,071,446,749	\$409.73
Health and Personal Care Stores	446	3,130	6,907	65,548	65,106	65,392	65,349	\$566,875,556	\$667.28
Gasoline Stations	447	5,230	8,687	67,332	67,260	67,556	67,383	\$313,699,401	\$358.11
Clothing and Clothing Accessories Stores	448	4,079	9,167	112,516	109,253	110,095	110,621	\$473,468,324	\$329.24
Sporting Goods/Hobby/Book/Music Stores	451	1,851	3,254	40,610	38,421	38,236	39,089	\$174,378,006	\$343.16
General Merchandise Stores	452	677	4,244	253,813	248,648	252,759	251,740	\$1,340,582,401	\$409.64
Miscellaneous Store Retailers	453	5,573	7,129	56,642	56,308	56,262	56,404	\$327,350,420	\$446.44
Nonstore Retailers	454	1,677	1,880	18,846	18,810	18,970	18,875	\$209,499,074	\$853.78
Transportation and Warehousing	48-49	12,707	15,401	347,891	347,783	349,710	348,461	\$4,471,985,907	\$987.19
Air Transportation	481	372	490	60,388	60,574	60,396	60,453	\$1,020,642,719	\$1,298.72
Rail Transportation	482	10	10	57	57	56	57	\$849,029	\$1,152.53

Table 1. State Summary
Employment and Total Payrolls by Industry
First Quarter 2010

Industry Group	Industry Code	UI Accounts	Reporting Units	Employment Month 1	Employment Month 2	Employment Month 3	Qtr. Average Employment	Total Wages	Average Weekly Wage
Water Transportation	483	155	164	5,085	5,028	5,032	5,048	\$113,559,802	\$1,730.35
Truck Transportation	484	6,407	7,252	102,945	102,878	103,816	103,213	\$1,073,549,899	\$800.10
Transit and Ground Passenger Transport	485	508	676	17,705	17,788	18,064	17,852	\$106,885,152	\$460.55
Pipeline Transportation	486	144	590	15,305	15,264	15,291	15,287	\$665,087,829	\$3,346.75
Scenic and Sightseeing Transportation	487	82	82	646	677	744	689	\$3,535,466	\$394.72
Support Activities for Transportation	488	3,335	3,760	66,234	66,197	66,494	66,308	\$772,130,443	\$895.73
Postal Service	491	68	69	314	315	312	314	\$1,786,175	\$438.04
Couriers and Messengers	492	833	1,112	33,510	33,489	33,440	33,480	\$291,153,919	\$668.96
Warehousing and Storage	493	915	1,196	45,702	45,516	46,065	45,761	\$422,805,474	\$710.73
Information	51	5,632	9,496	196,857	195,860	195,942	196,220	\$3,473,978,206	\$1,361.89
Publishing Industries	511	1,905	2,201	41,314	41,192	41,439	41,315	\$718,410,545	\$1,337.59
Motion Picture & Sound Recording Ind	512	859	1,041	16,141	15,724	15,975	15,947	\$120,112,782	\$579.40
Broadcasting (except Internet)	515	513	748	21,807	21,746	21,619	21,724	\$285,147,990	\$1,009.69
Telecommunications	517	1,209	3,814	88,137	87,535	87,035	87,569	\$1,749,416,173	\$1,536.74
Data Processing, Hosting and Related Services	518	673	1,096	24,951	25,121	25,352	25,141	\$535,196,883	\$1,637.50
Other Information Services	519	558	596	4,507	4,542	4,522	4,524	\$65,693,833	\$1,117.10
Finance and Insurance	52	20,474	34,641	441,255	442,376	443,200	442,277	\$8,561,607,572	\$1,489.08
Monetary Authorities-Central Bank	521	29	38	1,766	1,770	1,746	1,761	\$36,087,068	\$1,576.63
Credit Intermediation & Related Activity	522	4,346	13,200	236,770	236,759	236,727	236,752	\$3,557,499,483	\$1,155.87
Financial Investment & Related Activity	523	4,799	7,198	47,232	47,316	47,545	47,364	\$1,953,481,427	\$3,172.59
Insurance Carriers & Related Activities	524	10,896	13,616	147,786	148,930	149,580	148,765	\$2,735,601,605	\$1,414.52
Funds, Trusts & Other Financial Vehicles	525	538	589	7,701	7,601	7,602	7,635	\$278,937,989	\$2,810.44
Real Estate and Rental and Leasing	53	18,143	25,200	168,867	169,306	171,299	169,824	\$1,938,313,405	\$877.97
Real Estate	531	15,421	19,933	115,624	115,939	117,729	116,431	\$1,350,279,109	\$892.10
Rental and Leasing Services	532	2,469	4,967	51,070	51,184	51,387	51,214	\$543,969,044	\$817.04
Lessors, Nonfinancial Intangible Assets	533	296	300	2,173	2,183	2,183	2,180	\$44,065,252	\$1,555.12
Professional and Technical Services	54	62,605	69,056	563,205	566,568	567,711	565,828	\$9,948,354,874	\$1,352.46
Professional and Technical Services	541	62,605	69,056	563,205	566,568	567,711	565,828	\$9,948,354,874	\$1,352.46

Table 1. State Summary
Employment and Total Payrolls by Industry
First Quarter 2010

Industry Group	Industry Code	UI Accounts	Reporting Units	Employment Month 1	Employment Month 2	Employment Month 3	Qtr. Average Employment	Total Wages	Average Weekly Wage
Management of Companies and Enterprises	55	1,886	2,278	78,756	78,338	78,455	78,516	\$2,019,434,905	\$1,978.46
Management of Companies and Enterprises	551	1,886	2,278	78,756	78,338	78,455	78,516	\$2,019,434,905	\$1,978.46
Administrative and Waste Services	56	25,135	29,692	587,009	593,144	605,707	595,287	\$5,389,590,159	\$696.44
Administrative and Support Services	561	23,979	28,247	562,530	568,714	581,108	570,784	\$5,046,169,240	\$680.06
Waste Management and Remediation Service	562	1,187	1,445	24,479	24,430	24,599	24,503	\$343,420,919	\$1,078.13
Educational Services	61	4,790	5,202	116,429	121,326	122,638	120,131	\$1,153,998,547	\$738.94
Educational Services	611	4,790	5,202	116,429	121,326	122,638	120,131	\$1,153,998,547	\$738.94
Health Care and Social Assistance	62	45,948	54,672	1,145,961	1,150,433	1,157,769	1,151,388	\$10,934,139,299	\$730.50
Ambulatory Health Care Services	621	36,910	41,890	564,293	565,825	569,718	566,612	\$5,767,561,767	\$783.00
Hospitals	622	565	756	285,243	286,055	286,900	286,066	\$3,462,373,725	\$931.03
Nursing and Residential Care Facilities	623	2,123	3,298	163,644	164,298	166,013	164,652	\$1,037,666,494	\$484.78
Social Assistance	624	6,531	8,728	132,781	134,255	135,138	134,058	\$666,537,313	\$382.46
Arts, Entertainment, and Recreation	71	5,412	5,884	96,460	100,336	105,786	100,861	\$748,834,195	\$571.11
Performing Arts and Spectator Sports	711	1,717	1,750	20,738	21,737	23,597	22,024	\$378,849,223	\$1,323.20
Museums, Parks and Historical Sites	712	261	276	7,903	7,981	8,278	8,054	\$52,539,128	\$501.80
Amusement, Gambling & Recreation Ind	713	3,451	3,858	67,819	70,618	73,911	70,783	\$317,445,844	\$344.98
Accommodation and Food Services	72	30,305	42,093	858,383	870,938	888,444	872,588	\$3,513,004,462	\$309.69
Accommodation	721	3,998	4,972	94,944	96,104	98,137	96,395	\$559,468,076	\$446.45
Food Services and Drinking Places	722	26,343	37,121	763,439	774,834	790,307	776,193	\$2,953,536,386	\$292.70
Other Services, Ex. Public Admin	81	51,988	55,898	286,196	287,465	290,246	287,969	\$2,039,823,762	\$544.88
Repair and Maintenance	811	14,222	15,235	103,548	103,958	105,383	104,296	\$915,827,231	\$675.46
Personal and Laundry Services	812	9,270	11,252	91,037	91,668	92,253	91,653	\$515,235,243	\$432.43
Membership Organizations & Associations	813	5,045	5,859	57,128	57,343	57,832	57,434	\$453,975,348	\$608.02
Private Households	814	23,547	23,552	34,483	34,496	34,778	34,586	\$154,785,940	\$344.26
Unclassified	99	3,585	3,587	4,877	5,907	6,507	5,764	\$55,608,528	\$742.16

**Table 1. State Summary
Employment and Total Payrolls by Industry
First Quarter 2010**

Industry Group	Industry Code	UI Accounts	Reporting Units	Employment Month 1	Employment Month 2	Employment Month 3	Qtr. Average Employment	Total Wages	Average Weekly Wage
Federal Government		74	4,202	199,670	200,584	206,059	202,104	\$3,154,313,988	\$1,200.57
State Government		208	3,862	355,825	359,333	359,828	358,329	\$4,022,253,728	\$863.46
Local Government		3,932	9,563	1,255,555	1,278,706	1,284,254	1,272,838	\$12,033,353,507	\$727.23
All Industries and Federal Agencies		443,401	569,490	9,964,544	10,016,933	10,107,939	10,029,805	\$116,461,389,247	\$893.19
Industries With Texas UI Coverage Only		443,327	565,288	9,764,874	9,816,349	9,901,880	9,827,701	\$113,307,075,259	\$886.87

* Number of UI accounts does not add across industries because some UI accounts have reporting units in multiple industries.

Table 2. County Employment by Industry
First Quarter 2010

County	Total Employment	(A)	(B)	(C)	(D)	(E)	(F)	(G)	(H)	(I)	(J)	(L)	Fed	State	Local
ANDERSON	17,136	778	491	354	4,269	223	665	927	1,937	1,098	417	3,589	146	---	2,243
ANDREWS	5,121	1,219	519	123	774	40	324	262	146	307	144	3	21	33	1,206
ANGELINA	34,428	390	1,333	4,143	6,158	466	1,217	2,534	7,157	2,881	695	1	404	1,710	5,338
ARANSAS	5,465	289	225	43	1,311	65	260	289	560	1,169	175	1	20	108	950
ARCHER	1,979	304	124	95	520	---	54	146	87	39	68	18	26	36	462
ARMSTRONG	382	18	22	---	43	0	---	60	---	---	---	98	8	20	114
ATASCOSA	9,283	869	458	302	2,067	69	318	290	1,341	698	362	4	58	103	2,344
AUSTIN	11,630	170	820	3,198	2,524	78	372	658	933	610	257	14	128	403	1,465
BAILEY	2,561	599	71	134	593	84	75	55	50	194	36	4	32	34	599
BANDERA	2,824	107	245	16	473	30	110	109	327	521	94	6	16	45	725
BASTROP	14,138	410	869	1,138	2,705	90	404	784	1,266	1,484	404	13	396	311	3,864
BAYLOR	1,144	41	44	17	201	---	65	18	330	88	48	9	22	41	220
BEE	8,737	424	186	105	1,626	81	224	237	1,059	757	192	1,964	55	---	1,828
BELL	104,504	297	3,838	6,265	19,619	2,187	4,332	8,259	16,080	9,913	2,988	40	10,953	1,299	18,432
BEXAR	713,510	3,310	36,092	33,369	116,442	17,417	60,574	94,911	105,592	85,112	22,149	235	32,753	17,976	87,576
BLANCO	2,622	207	286	85	378	14	137	429	145	273	59	5	66	67	472
BORDEN	163	25	0	0	27	0	0	9	0	0	---	2	3	24	74
BOSQUE	3,615	222	186	498	511	26	176	134	463	186	75	5	76	52	1,004
BOWIE	42,130	74	1,295	1,734	8,837	482	2,109	2,798	7,921	4,039	1,054	3	5,135	1,340	5,311
BRAZORIA	84,186	1,931	9,622	11,431	16,329	543	3,284	5,515	7,183	7,792	2,637	18	494	2,978	14,429
BRAZOS	86,547	1,686	4,127	4,778	11,540	1,004	2,959	5,620	9,336	9,446	2,125	16	1,028	24,113	8,769
BREWSTER	4,512	120	129	86	1,141	120	172	181	378	851	90	8	313	443	480
BRISCOE	343	49	27	---	47	---	22	16	---	24	9	25	15	30	80
BROOKS	2,379	273	51	---	313	8	68	131	362	259	58	6	279	42	528
BROWN	15,002	143	486	2,811	2,657	165	509	521	3,265	1,175	375	2	134	832	1,927
BURLESON	3,515	488	189	233	746	10	147	176	214	276	105	0	50	52	830
BURNET	11,811	84	898	869	2,506	229	553	974	1,324	1,521	288	5	86	291	2,183
CALDWELL	6,796	297	238	289	1,456	30	270	370	1,256	612	146	3	65	138	1,626
CALHOUN	9,712	300	2,014	2,807	1,024	41	281	568	399	607	120	6	40	64	1,441
CALLAHAN	2,121	113	123	122	444	---	96	44	192	191	48	12	50	42	643
CAMERON	123,441	578	3,358	5,712	22,993	2,007	4,879	8,461	30,789	11,585	2,552	22	2,905	4,348	23,249
CAMP	4,317	---	219	161	1,030	---	302	112	517	258	213	1,447	32	24	---
CARSON	4,743	113	97	---	297	9	33	65	---	43	96	3,297	254	37	402
CASS	7,438	244	275	1,301	1,199	20	354	254	1,127	498	178	2	73	221	1,690
CASTRO	2,477	787	41	54	414	5	72	47	205	66	123	0	30	30	602
CHAMBERS	9,200	378	464	1,755	1,786	---	730	684	380	884	237	8	67	44	1,783
CHEROKEE	14,508	863	556	2,239	2,194	107	510	562	2,017	975	202	7	81	2,001	2,192

(A) - Natural Resources and Mining

(D) - Trade, Transportation Utilities

(G) - Professional Business Services

(J) - Other Services

(B) - Construction

(E) - Information

(H) - Education Health Services

(L) - Unclassified

(C) - Manufacturing

(F) - Financial Activities

(I) - Leisure Hospitality

Table 2. County Employment by Industry
First Quarter 2010

County	Total Employment	(A)	(B)	(C)	(D)	(E)	(F)	(G)	(H)	(I)	(J)	(L)	Fed	State	Local
CHILDRESS	2,468	63	52	---	470	25	81	41	201	298	37	11	30	480	679
CLAY	1,575	94	98	75	305	---	71	49	185	53	44	3	33	36	529
COCHRAN	751	145	---	0	122	---	20	---	72	15	8	22	11	26	309
COKE	774	25	95	---	105	8	33	28	30	64	19	5	16	23	323
COLEMAN	2,231	45	182	75	442	28	111	43	301	193	38	5	47	29	693
COLLIN	278,925	1,358	10,560	20,177	50,178	16,292	26,274	46,299	30,072	29,641	7,797	4,704	1,419	---	34,155
COLLINGSWORTH	856	89	5	14	122	---	35	44	166	69	32	3	24	24	230
COLORADO	5,976	325	460	824	1,207	38	235	217	876	690	185	4	57	59	798
COMAL	37,464	376	3,485	2,738	10,237	374	1,276	2,673	4,657	5,335	1,029	8	172	171	4,934
COMANCHE	3,618	508	139	153	758	90	170	134	278	209	79	5	49	28	1,016
CONCHO	834	43	2	---	91	---	26	---	81	71	12	256	31	21	199
COOKE	14,603	1,662	761	2,742	2,831	103	472	635	757	1,192	478	10	73	469	2,418
CORYELL	14,708	52	590	357	2,010	117	766	1,744	1,188	1,343	516	2,972	200	---	2,854
COTTLE	433	23	3	---	72	---	33	21	58	23	13	34	15	33	105
CRANE	1,385	309	25	---	309	---	22	68	129	101	16	28	8	23	349
CROCKETT	1,354	261	29	---	230	9	53	60	28	179	62	3	3	40	397
CROSBY	1,568	413	7	41	293	---	49	17	136	48	38	3	23	29	471
CULBERSON	1,083	85	---	10	292	---	---	13	---	213	13	101	85	30	239
DALLAM	3,450	686	188	391	823	58	129	97	78	298	123	316	21	---	242
DALLAS	1,388,571	7,728	66,098	115,303	276,187	45,240	135,318	251,702	159,590	123,470	37,763	766	27,212	19,155	123,037
DAWSON	4,379	788	147	91	771	36	114	73	321	301	96	601	68	---	971
DEAF SMITH	7,085	1,154	308	1,304	1,521	100	237	147	283	444	206	5	39	65	1,272
DELTA	1,324	21	10	---	112	---	31	21	726	23	13	9	22	28	308
DENTON	167,481	922	7,843	10,543	36,244	2,658	9,326	20,666	20,891	20,788	4,415	119	1,776	8,189	23,101
DEWITT	6,318	151	254	889	942	21	402	199	589	436	158	8	41	482	1,745
DICKENS	477	50	---	---	82	---	14	5	25	31	18	61	17	21	152
DIMMIT	2,861	533	142	25	436	---	90	82	209	243	27	5	261	45	764
DONLEY	999	64	17	38	141	6	32	15	112	115	35	0	19	26	380
DUVAL	2,901	616	278	---	330	---	51	12	161	77	25	15	167	186	985
EASTLAND	6,518	402	593	576	1,104	52	306	244	1,029	413	172	4	60	98	1,465
ECTOR	57,228	5,890	4,790	3,924	12,407	597	2,522	3,840	5,276	5,746	2,296	9	191	1,513	8,226
EDWARDS	434	46	7	0	75	37	---	13	19	11	4	12	26	35	149
EL PASO	267,311	988	15,484	16,271	53,402	4,981	11,425	30,942	33,125	26,867	6,197	271	12,028	9,301	46,030
ELLIS	36,767	129	1,964	7,912	8,670	330	1,084	2,080	3,437	3,075	940	37	233	182	6,694
ERATH	15,094	1,146	667	1,460	2,693	98	455	709	1,614	2,003	507	19	79	2,251	1,393
FALLS	3,208	174	81	125	531	8	116	62	518	137	84	1	43	522	806
FANNIN	6,750	127	203	554	1,195	40	279	171	977	451	154	0	605	560	1,434

(A) - Natural Resources and Mining	(D) - Trade, Transportation Utilities	(G) - Professional Business Services	(J) - Other Services
(B) - Construction	(E) - Information	(H) - Education Health Services	(L) - Unclassified
(C) - Manufacturing	(F) - Financial Activities	(I) - Leisure Hospitality	

Table 2. County Employment by Industry
First Quarter 2010

County	Total Employment	(A)	(B)	(C)	(D)	(E)	(F)	(G)	(H)	(I)	(J)	(L)	Fed	State	Local
FAYETTE	8,160	605	362	837	1,696	127	492	209	1,061	888	185	9	78	86	1,524
FISHER	881	104	13	---	147	---	48	31	76	---	17	92	31	19	303
FLOYD	1,664	339	42	64	337	---	72	30	101	63	25	6	36	23	528
FOARD	354	20	6	---	64	0	---	---	79	---	11	72	11	---	91
FORT BEND	128,501	2,106	10,000	12,406	25,920	1,289	5,285	13,655	15,837	13,790	4,195	79	1,345	3,239	19,355
FRANKLIN	2,904	51	78	---	1,165	---	81	87	645	182	126	69	22	32	368
FREESTONE	5,760	599	436	178	1,078	60	144	342	547	631	147	4	43	491	1,061
FRIO	4,693	506	82	21	680	26	111	702	725	300	49	0	115	397	980
GAINES	4,665	1,409	284	51	895	42	157	56	103	239	90	7	32	33	1,267
GALVESTON	92,175	591	5,927	6,880	15,948	714	5,424	5,471	8,417	13,361	2,609	52	998	11,338	14,445
GARZA	1,699	245	156	27	214	---	39	---	---	118	39	457	15	26	363
GILLESPIE	8,859	84	786	705	1,932	108	360	463	1,650	1,382	217	9	64	83	1,015
GLASSCOCK	346	160	---	0	32	0	---	---	---	---	---	32	11	16	95
GOLIAD	1,404	95	45	---	321	---	32	47	160	138	43	29	20	39	435
GONZALES	6,414	1,140	99	1,076	1,304	40	202	167	438	297	162	3	73	62	1,349
GRAY	7,830	1,028	356	967	1,557	63	274	335	792	560	291	0	55	464	1,089
GRAYSON	41,034	218	2,129	5,145	7,872	486	2,541	2,302	8,525	4,448	925	14	429	231	5,766
GREGG	70,922	3,776	5,377	9,170	14,743	1,025	2,961	6,786	11,179	6,127	1,841	18	496	385	7,038
GRIMES	7,050	219	353	1,683	1,320	24	272	203	435	367	106	735	49	---	1,286
GUADALUPE	28,526	257	2,150	4,863	5,321	180	958	1,825	3,047	2,805	963	2	211	170	5,774
HALE	14,016	861	345	2,770	3,226	86	564	454	1,618	943	529	7	126	548	1,939
HALL	921	131	16	40	112	---	46	24	119	68	34	12	27	21	270
HAMILTON	2,727	224	388	160	516	26	67	50	304	214	58	0	31	80	609
HANSFORD	1,919	498	87	53	344	---	105	61	55	81	54	2	21	19	537
HARDEMAN	1,180	57	---	---	183	10	62	---	63	82	46	182	18	31	445
HARDIN	12,139	393	895	689	2,560	78	244	268	2,857	1,177	301	5	86	82	2,503
HARRIS	1,965,500	73,636	133,250	167,934	410,107	28,946	112,200	308,008	229,859	172,865	58,670	1,040	24,619	46,297	198,069
HARRISON	21,890	2,009	1,194	3,496	3,697	133	1,287	1,381	2,510	1,656	841	3	147	330	3,205
HARTLEY	1,602	402	57	14	310	---	24	35	64	15	19	10	8	40	606
HASKELL	1,867	183	---	12	344	---	64	153	172	91	116	261	38	39	395
HAYS	47,503	263	2,610	3,539	11,360	568	1,571	3,034	5,025	5,999	1,822	4,512	196	---	7,005
HEMPHILL	1,881	346	211	38	475	20	117	44	76	114	41	0	13	27	358
HENDERSON	15,699	269	671	1,607	3,236	148	605	1,215	2,302	1,745	399	23	123	221	3,136
HIDALGO	218,553	6,373	6,855	6,294	44,258	2,020	7,628	13,679	53,689	19,198	3,844	110	3,497	6,249	44,860
HILL	9,061	239	745	791	2,112	44	289	362	1,001	847	184	2	114	139	2,192
HOCKLEY	8,777	1,641	396	253	1,612	49	242	199	701	474	---	1,090	57	78	1,986
HOOD	12,451	923	940	437	2,709	200	694	750	1,459	1,636	547	4	99	62	1,991

(A) - Natural Resources and Mining

(D) - Trade, Transportation Utilities

(G) - Professional Business Services

(J) - Other Services

(B) - Construction

(E) - Information

(H) - Education Health Services

(L) - Unclassified

(C) - Manufacturing

(F) - Financial Activities

(I) - Leisure Hospitality

Table 2. County Employment by Industry
First Quarter 2010

County	Total Employment	(A)	(B)	(C)	(D)	(E)	(F)	(G)	(H)	(I)	(J)	(L)	Fed	State	Local
HOPKINS	11,362	458	716	1,281	3,196	134	496	744	793	871	242	4	85	133	2,209
HOUSTON	6,257	139	271	500	1,167	73	209	330	781	306	173	14	94	1,139	1,063
HOWARD	12,019	817	570	806	1,933	58	409	339	1,849	1,069	308	759	928	---	2,173
HUDSPETH	1,153	187	---	---	69	---	9	---	---	14	9	180	361	40	284
HUNT	27,730	52	718	7,555	4,704	189	815	1,156	2,850	2,062	482	4	250	2,313	4,580
HUTCHINSON	8,477	1,503	1,178	1,111	1,220	---	209	238	510	659	187	26	79	63	1,494
IRION	507	205	38	17	53	---	---	---	11	12	13	31	4	12	113
JACK	2,652	705	298	40	343	---	157	129	173	147	23	6	19	51	560
JACKSON	4,871	218	656	---	703	109	122	150	248	244	105	1,271	30	40	975
JASPER	10,273	294	353	1,432	2,153	58	349	335	1,869	894	219	7	93	312	1,905
JEFF DAVIS	977	---	52	---	51	---	30	22	95	148	15	270	27	139	129
JEFFERSON	118,382	542	14,862	13,914	22,170	1,307	4,371	11,244	16,712	11,048	3,046	21	2,031	4,841	12,272
JIM HOGG	1,967	140	24	52	214	11	86	---	641	69	25	9	274	43	379
JIM WELLS	16,328	2,712	321	398	3,364	67	781	520	4,209	1,343	286	0	94	141	2,094
JOHNSON	37,546	1,616	2,888	4,488	8,767	471	1,135	1,925	4,550	3,294	925	45	252	240	6,951
JONES	3,798	330	188	466	600	20	160	94	317	153	58	5	95	86	1,225
KARNES	3,736	130	66	226	631	---	111	217	299	232	62	803	38	---	922
KAUFMAN	25,255	83	2,005	3,353	5,463	110	840	1,364	2,552	2,527	612	1,120	193	---	5,031
KENDALL	10,554	80	922	860	2,208	142	555	865	1,330	1,204	480	5	60	67	1,776
KENEDY	383	224	---	0	---	0	0	---	---	12	37	105	2	4	---
KENT	303	20	0	0	29	0	---	---	28	---	---	19	8	21	178
KERR	16,950	113	916	776	3,162	264	810	1,213	3,433	2,087	729	775	557	---	2,117
KIMBLE	1,387	40	126	97	308	---	46	34	145	275	29	4	14	46	224
KING	133	5	---	0	3	0	0	27	0	---	0	26	4	13	55
KINNEY	801	27	---	---	153	---	---	---	14	83	11	62	153	27	269
KLEBERG	12,578	691	280	193	1,594	89	425	583	2,231	1,282	326	2,198	924	---	1,762
KNOX	1,233	231	82	---	247	---	46	7	114	42	30	22	32	28	352
LA SALLE	1,722	514	---	0	132	---	32	---	71	114	22	144	124	167	401
LAMAR	19,303	72	1,076	4,045	3,162	150	900	1,191	3,369	1,625	409	9	153	272	2,870
LAMB	4,269	802	105	---	795	---	175	144	342	171	64	630	46	45	951
LAMPASAS	4,738	43	634	644	889	33	171	158	506	375	220	0	51	88	927
LAVACA	5,838	169	260	1,228	1,532	38	212	77	876	269	195	0	55	61	868
LEE	5,053	475	704	381	1,022	24	265	141	251	354	105	486	34	---	812
LEON	5,173	626	1,055	459	781	16	243	143	114	616	157	0	51	53	860
LIBERTY	16,256	685	664	1,327	3,863	113	616	688	2,017	1,251	324	4	133	1,107	3,464
LIMESTONE	8,735	281	174	651	1,261	37	297	---	1,213	441	162	2,704	68	---	1,445
LIPSCOMB	1,171	151	27	---	181	---	22	4	15	15	15	278	27	16	420

(A) - Natural Resources and Mining

(D) - Trade, Transportation Utilities

(G) - Professional Business Services

(J) - Other Services

(B) - Construction

(E) - Information

(H) - Education Health Services

(L) - Unclassified

(C) - Manufacturing

(F) - Financial Activities

(I) - Leisure Hospitality

Table 2. County Employment by Industry
First Quarter 2010

County	Total Employment	(A)	(B)	(C)	(D)	(E)	(F)	(G)	(H)	(I)	(J)	(L)	Fed	State	Local
LIVE OAK	2,813	264	109	---	470	---	133	78	172	304	73	305	300	32	572
LLANO	4,089	31	284	112	749	24	226	218	229	926	107	1	28	37	1,116
LOVING	53	0	---	---	---	0	---	---	0	---	0	50	1	---	---
LUBBOCK	120,971	1,126	5,281	4,810	24,551	4,426	6,801	8,737	19,361	15,415	4,062	21	1,358	10,884	14,139
LYNN	1,324	269	9	---	224	52	54	15	24	37	52	33	32	20	504
MADISON	4,269	---	168	58	702	15	120	359	321	430	110	1,391	23	---	572
MARION	1,833	37	8	223	394	---	37	40	450	150	26	8	35	42	384
MARTIN	1,285	158	143	---	279	---	33	11	127	31	29	53	18	24	378
MASON	1,091	76	24	11	184	---	59	110	159	114	31	12	25	26	260
MATAGORDA	11,004	611	312	491	3,216	72	387	926	944	1,021	401	7	86	100	2,431
MAVERICK	16,118	246	207	507	3,279	86	494	371	3,946	1,074	122	1	911	155	4,719
MCCULLOCH	2,714	69	59	375	772	28	107	125	248	187	50	5	29	42	617
MCLENNAN	98,982	302	6,129	14,166	16,846	1,354	6,151	8,151	16,383	9,251	3,006	20	3,104	2,572	11,547
MCMULLEN	242	55	0	0	32	---	10	---	---	---	3	10	6	32	94
MEDINA	7,904	271	392	185	1,533	69	382	442	634	786	195	2	59	572	2,381
MENARD	483	27	20	0	94	---	32	18	25	37	---	15	9	9	196
MIDLAND	64,892	11,062	3,269	2,429	12,992	1,147	3,156	7,007	6,065	6,575	2,140	25	621	535	7,870
MILAM	5,503	215	502	403	1,072	54	233	317	859	403	161	2	56	55	1,171
MILLS	1,360	95	28	67	236	---	60	37	266	49	38	84	22	28	351
MITCHELL	2,352	189	58	39	345	12	53	62	151	88	20	615	26	---	694
MONTAGUE	4,665	431	183	265	1,026	23	236	151	381	397	127	1	57	54	1,333
MONTGOMERY	123,943	2,610	8,866	9,009	25,744	886	5,511	13,972	13,137	15,688	4,915	59	850	436	22,259
MOORE	9,856	544	498	---	1,565	56	189	281	257	634	342	3,823	76	61	1,531
MORRIS	4,048	49	46	1,624	670	36	138	94	380	184	83	1	28	44	670
MOTLEY	372	45	23	25	60	0	---	---	61	28	7	4	16	19	85
NACOGDOCHES	22,696	429	938	3,053	3,624	129	812	2,067	3,016	2,659	486	1,842	161	---	3,480
NAVARRO	15,226	302	528	2,330	3,259	68	579	897	2,113	989	334	9	150	411	3,258
NEWTON	1,772	99	73	159	223	---	---	63	353	44	8	8	38	33	671
NOLAN	5,991	296	156	813	1,247	46	178	286	293	633	197	362	51	---	1,434
NUECES	150,835	3,743	12,661	7,730	26,677	1,993	6,455	14,206	26,625	17,032	4,596	23	6,420	5,435	17,238
OCHILTREE	4,280	1,429	348	42	833	38	135	93	167	279	124	0	29	27	736
OLDHAM	730	90	---	10	75	---	---	---	---	46	7	301	10	23	166
ORANGE	21,647	277	1,239	4,447	4,428	121	876	1,035	1,814	2,173	561	10	118	392	4,154
PALO PINTO	7,949	654	307	1,229	1,680	35	250	316	525	835	214	4	69	134	1,697
PANOLA	8,571	1,196	1,417	826	1,605	57	214	435	792	391	164	0	80	60	1,335
PARKER	25,053	1,045	1,725	2,145	5,602	267	783	1,749	2,943	2,772	777	9	184	165	4,886
PARMER	5,023	870	86	---	479	30	78	216	128	47	75	2,076	65	20	852

(A) - Natural Resources and Mining	(D) - Trade, Transportation Utilities	(G) - Professional Business Services	(J) - Other Services
(B) - Construction	(E) - Information	(H) - Education Health Services	(L) - Unclassified
(C) - Manufacturing	(F) - Financial Activities	(I) - Leisure Hospitality	

Table 2. County Employment by Industry
First Quarter 2010

County	Total Employment	(A)	(B)	(C)	(D)	(E)	(F)	(G)	(H)	(I)	(J)	(L)	Fed	State	Local
PECOS	5,942	1,653	187	34	919	36	229	152	209	502	78	0	63	574	1,306
POLK	10,675	253	417	---	2,049	183	385	569	1,149	969	260	1,146	127	934	2,235
POTTER	73,525	758	3,299	8,002	14,088	1,054	4,402	5,742	11,813	7,365	2,536	22	1,930	2,948	9,566
PRESIDIO	2,227	---	51	---	260	---	59	55	98	210	20	450	376	79	569
RAINS	1,688	24	144	66	365	---	56	185	126	158	62	13	25	30	433
RANDALL	28,294	287	1,766	1,312	7,184	503	2,109	2,090	2,829	3,537	1,051	1	90	2,415	3,120
REAGAN	1,854	393	47	0	855	---	21	18	11	65	55	3	16	17	351
REAL	704	24	36	---	85	0	17	21	142	98	---	20	6	25	230
RED RIVER	2,731	117	154	377	285	12	92	14	704	85	26	0	45	54	768
REEVES	3,990	433	49	---	725	21	148	61	297	358	69	101	89	83	1,555
REFUGIO	2,188	315	163	---	255	---	147	26	188	230	103	5	55	29	673
ROBERTS	262	73	6	0	45	---	---	---	0	---	---	33	9	2	95
ROBERTSON	3,648	272	123	361	747	12	123	93	389	357	74	0	48	49	998
ROCKWALL	20,220	36	1,075	1,145	4,294	190	749	1,929	3,231	3,061	764	19	101	53	3,574
RUNNELS	2,850	145	107	675	453	8	107	62	269	127	45	4	43	43	760
RUSK	14,284	1,830	1,908	1,065	2,469	134	547	991	1,546	805	302	0	89	212	2,388
SABINE	2,082	167	145	---	310	8	72	67	218	80	45	425	55	26	464
SAN AUGUSTINE	1,623	45	86	81	386	7	49	19	450	40	27	4	19	36	373
SAN JACINTO	2,143	19	86	66	373	4	93	133	148	134	39	0	40	48	961
SAN PATRICIO	17,054	701	3,039	1,525	2,608	150	473	846	1,340	1,834	289	2	177	167	3,904
SAN SABA	1,683	176	28	48	350	---	45	39	144	244	78	6	23	172	329
SCHLEICHER	767	128	91	16	138	---	21	13	60	---	9	16	13	6	256
SCURRY	6,260	1,283	369	132	1,164	61	281	226	309	481	236	0	42	423	1,253
SHACKELFORD	1,078	325	24	23	160	---	45	36	133	68	15	9	17	22	202
SHELBY	8,014	628	437	2,331	1,520	39	333	171	651	358	140	1	85	47	1,273
SHERMAN	864	228	42	---	116	---	26	32	38	---	18	33	14	22	296
SMITH	89,938	2,531	3,752	6,614	17,931	2,032	3,833	8,300	19,586	8,942	3,078	3	896	3,084	9,355
SOMERVELL	3,809	134	94	72	1,226	---	90	468	595	408	121	9	16	31	544
STARR	14,040	290	201	70	1,786	36	267	173	4,676	651	318	3	604	170	4,795
STEPHENS	3,043	358	234	400	498	---	164	87	230	160	93	7	24	195	594
STERLING	506	149	11	---	62	0	---	---	---	---	27	87	2	17	150
STONEWALL	514	70	54	---	55	0	15	2	23	20	30	2	15	20	207
SUTTON	2,309	672	117	---	630	8	71	29	40	163	46	79	8	43	404
SWISHER	1,983	306	36	115	382	---	60	28	82	135	43	26	35	153	583
TARRANT	737,804	7,714	35,193	76,687	172,492	13,810	47,325	84,195	87,908	80,460	22,253	303	14,389	10,948	84,126
TAYLOR	56,247	1,173	2,686	2,281	10,644	1,064	3,311	4,402	11,494	6,280	1,749	14	1,253	3,366	6,531
TERRELL	324	23	0	0	16	0	---	6	---	31	4	33	70	26	114

(A) - Natural Resources and Mining

(D) - Trade, Transportation Utilities

(G) - Professional Business Services

(J) - Other Services

(B) - Construction

(E) - Information

(H) - Education Health Services

(L) - Unclassified

(C) - Manufacturing

(F) - Financial Activities

(I) - Leisure Hospitality

Table 2. County Employment by Industry
First Quarter 2010

County	Total Employment	(A)	(B)	(C)	(D)	(E)	(F)	(G)	(H)	(I)	(J)	(L)	Fed	State	Local
TERRY	3,724	745	71	162	695	27	118	237	195	234	88	9	36	204	903
THROCKMORTON	492	82	7	---	62	---	13	9	---	25	7	66	13	---	209
TITUS	16,308	484	395	6,011	2,355	115	423	479	1,213	1,197	410	2	119	152	2,953
TOM GREEN	43,599	1,040	1,982	3,403	7,796	1,229	2,025	3,330	7,688	4,542	1,358	9	1,346	2,341	5,512
TRAVIS	555,288	1,601	24,721	36,876	85,065	17,274	34,586	87,511	60,680	59,622	19,775	286	10,459	64,760	52,073
TRINITY	2,256	55	80	157	362	---	46	71	381	320	79	6	41	34	624
TYLER	3,955	319	58	156	737	21	117	45	371	260	54	634	62	---	1,120
UPSHUR	6,366	183	411	235	1,097	345	238	314	963	621	74	0	62	80	1,742
UPTON	1,364	495	59	---	220	---	13	---	39	53	---	20	9	25	430
UVALDE	9,063	580	246	363	2,105	126	295	348	1,098	859	257	0	254	268	2,264
VAL VERDE	16,716	105	417	---	3,224	143	650	896	2,839	1,360	204	1,753	2,219	214	2,693
VAN ZANDT	9,583	752	922	414	1,880	75	358	289	1,205	981	268	5	95	113	2,224
VICTORIA	35,974	2,025	2,097	2,622	7,814	462	1,737	1,969	6,189	3,221	1,107	8	366	259	6,098
WALKER	23,480	250	587	844	2,873	162	581	989	2,084	1,751	439	4	150	10,589	2,176
WALLER	13,460	198	787	2,778	2,354	39	278	542	962	922	159	4	61	2,499	1,877
WARD	3,408	885	154	150	586	30	136	189	129	206	56	0	21	103	763
WASHINGTON	14,287	337	581	2,514	2,987	137	807	494	1,787	1,207	302	1,129	78	---	1,925
WEBB	84,307	1,404	2,109	799	25,176	594	3,803	5,916	13,421	7,779	1,301	74	3,277	2,042	16,612
WHARTON	14,282	2,132	556	1,248	3,093	100	677	418	1,536	1,041	335	13	95	109	2,929
WHEELER	2,040	282	114	6	417	---	65	82	176	290	27	11	33	21	515
WICHITA	52,320	1,260	1,931	4,855	10,113	1,137	2,531	2,909	8,546	5,720	1,865	15	2,140	2,915	6,384
WILBARGER	6,869	278	92	1,070	895	125	194	109	274	414	146	2,075	49	---	1,148
WILLACY	3,737	335	---	---	504	---	99	263	365	284	68	463	152	91	1,113
WILLIAMSON	118,104	787	8,331	5,368	30,579	1,210	7,070	13,328	10,739	13,767	4,921	55	1,605	860	19,484
WILSON	6,352	86	473	266	1,235	56	174	240	936	526	116	2	65	58	2,117
WINKLER	2,197	605	203	---	410	---	150	17	49	91	45	14	13	25	574
WISE	18,144	2,332	958	1,320	4,381	109	502	822	2,315	1,395	393	20	134	112	3,351
WOOD	9,012	389	366	921	1,868	139	460	286	1,385	972	252	5	96	278	1,595
YOAKUM	3,145	1,012	252	90	571	8	74	75	19	124	55	0	19	24	820
YOUNG	6,618	819	255	944	1,142	137	316	205	675	518	150	6	54	70	1,327
ZAPATA	3,403	627	275	30	373	17	106	82	319	236	34	1	175	37	1,090
ZAVALA	2,965	141	70	---	174	---	45	---	675	126	77	710	11	42	894

When there was no employment reported in a county in one of the industry groups, a "0" is shown. When one employer comprises 80% or more of the employment for an industry group in a county, or there are fewer than three employers for an industry group in a county, a dash (---) is shown. The employment for that industry is included in (L) - Unclassified so as not to reveal information about individual establishments.

(A) - Natural Resources and Mining	(D) - Trade, Transportation Utilities	(G) - Professional Business Services	(J) - Other Services
(B) - Construction	(E) - Information	(H) - Education Health Services	(L) - Unclassified
(C) - Manufacturing	(F) - Financial Activities	(I) - Leisure Hospitality	

Table 3. Covered Employment and Wages for All Industries
First Quarter 2010

County	Total (Including Federal)			Total (Excluding Federal)		
	Employment	Wages	AWW*	Employment	Wages	AWW*
ANDERSON	17,136	\$175,295,337	\$786.91	16,989	\$173,644,710	\$786.22
ANDREWS	5,121	\$59,106,239	\$887.90	5,100	\$58,845,041	\$887.62
ANGELINA	34,428	\$286,750,820	\$640.69	34,024	\$281,015,187	\$635.33
ARANSAS	5,465	\$38,469,737	\$541.45	5,445	\$38,164,478	\$539.16
ARCHER	1,979	\$14,303,402	\$556.06	1,953	\$14,049,562	\$553.37
ARMSTRONG	382	\$3,127,415	\$629.77	374	\$3,065,100	\$629.86
ATASCOSA	9,283	\$73,471,109	\$608.81	9,225	\$72,897,019	\$607.86
AUSTIN	11,630	\$122,837,972	\$812.45	11,502	\$121,350,147	\$811.54
BAILEY	2,561	\$19,096,876	\$573.68	2,528	\$18,762,976	\$570.85
BANDERA	2,824	\$19,165,111	\$521.98	2,809	\$19,013,353	\$520.73
BASTROP	14,138	\$112,526,583	\$612.23	13,743	\$107,051,512	\$599.21
BAYLOR	1,144	\$7,613,259	\$511.92	1,122	\$7,379,256	\$506.06
BEE	8,737	\$64,196,587	\$565.21	8,682	\$63,735,839	\$564.70
BELL	104,504	\$961,939,359	\$708.06	93,551	\$813,646,476	\$669.03
BEXAR	713,510	\$7,301,077,789	\$787.12	680,757	\$6,803,477,510	\$768.77
BLANCO	2,622	\$21,389,939	\$627.53	2,556	\$20,711,133	\$623.38
BORDEN	163	\$1,080,911	\$509.06	160	\$1,062,609	\$509.81
BOSQUE	3,615	\$26,667,104	\$567.50	3,538	\$25,782,616	\$560.51
BOWIE	42,130	\$355,417,791	\$648.94	36,995	\$286,239,389	\$595.17
BRAZORIA	84,186	\$918,371,960	\$839.14	83,692	\$912,161,935	\$838.38
BRAZOS	86,547	\$716,347,137	\$636.69	85,519	\$702,855,861	\$632.21
BREWSTER	4,512	\$34,943,347	\$595.69	4,199	\$30,170,490	\$552.70
BRISCOE	343	\$2,113,079	\$473.89	328	\$1,998,191	\$468.14
BROOKS	2,379	\$19,383,558	\$626.75	2,100	\$14,411,734	\$527.90
BROWN	15,002	\$112,314,098	\$575.91	14,867	\$110,666,261	\$572.58
BURLESON	3,515	\$29,277,145	\$640.71	3,465	\$28,735,021	\$637.86
BURNET	11,811	\$94,635,772	\$616.33	11,726	\$93,525,989	\$613.55
CALDWELL	6,796	\$47,114,852	\$533.29	6,731	\$46,392,155	\$530.20
CALHOUN	9,712	\$119,267,636	\$944.68	9,671	\$118,876,438	\$945.51
CALLAHAN	2,121	\$14,709,941	\$533.49	2,071	\$14,099,589	\$523.62
CAMERON	123,441	\$854,016,920	\$532.19	120,536	\$803,497,599	\$512.77
CAMP	4,317	\$30,362,986	\$541.07	4,285	\$30,022,315	\$538.99
CARSON	4,743	\$80,077,758	\$1,298.63	4,489	\$74,754,231	\$1,280.98
CASS	7,438	\$59,723,734	\$617.68	7,364	\$59,016,502	\$616.45
CASTRO	2,477	\$16,905,112	\$525.06	2,447	\$16,627,449	\$522.77
CHAMBERS	9,200	\$104,744,655	\$875.82	9,133	\$103,918,533	\$875.26
CHEROKEE	14,508	\$104,010,708	\$551.48	14,427	\$103,266,603	\$550.61
CHILDRESS	2,468	\$16,701,710	\$520.63	2,437	\$16,364,840	\$516.48
CLAY	1,575	\$11,190,562	\$546.55	1,542	\$10,883,162	\$543.03
COCHRAN	751	\$5,428,146	\$556.24	739	\$5,274,987	\$548.83
COKE	774	\$5,336,116	\$530.55	758	\$5,210,042	\$528.72
COLEMAN	2,231	\$13,913,159	\$479.64	2,184	\$13,527,994	\$476.40
COLLIN	278,925	\$3,701,145,372	\$1,020.72	277,505	\$3,680,909,938	\$1,020.33
COLLINGSWORTH	856	\$5,802,481	\$521.23	832	\$5,601,652	\$517.70
COLORADO	5,976	\$47,538,174	\$611.91	5,919	\$46,937,828	\$610.00
COMAL	37,464	\$313,731,467	\$644.18	37,291	\$311,369,292	\$642.28
COMANCHE	3,618	\$25,174,596	\$535.19	3,569	\$24,649,743	\$531.28

*AWW = Average Weekly Wage

Table 3. Covered Employment and Wages for All Industries
First Quarter 2010

County	Total (Including Federal)			Total (Excluding Federal)		
	Employment	Wages	AWW*	Employment	Wages	AWW*
CONCHO	834	\$5,949,069	\$548.71	803	\$5,586,216	\$535.13
COOKE	14,603	\$131,531,527	\$692.86	14,530	\$130,780,426	\$692.38
CORYELL	14,708	\$118,158,870	\$617.96	14,508	\$115,943,740	\$614.75
COTTLE	433	\$3,404,731	\$605.32	418	\$3,253,738	\$599.25
CRANE	1,385	\$19,051,575	\$1,057.87	1,377	\$18,974,445	\$1,059.97
CROCKETT	1,354	\$10,051,030	\$570.88	1,351	\$10,010,793	\$569.99
CROSBY	1,568	\$10,844,862	\$532.03	1,545	\$10,630,254	\$529.15
CULBERSON	1,083	\$6,965,280	\$494.88	997	\$5,710,094	\$440.41
DALLAM	3,450	\$29,823,773	\$665.03	3,429	\$29,588,813	\$663.83
DALLAS	1,388,571	\$19,695,186,770	\$1,091.06	1,361,358	\$19,222,202,274	\$1,086.14
DAWSON	4,379	\$32,296,066	\$567.37	4,310	\$31,752,264	\$566.66
DEAF SMITH	7,085	\$55,539,746	\$603.00	7,046	\$55,047,110	\$600.99
DELTA	1,324	\$7,926,880	\$460.54	1,302	\$7,748,683	\$457.80
DENTON	167,481	\$1,622,673,099	\$745.28	165,705	\$1,597,441,698	\$741.56
DEWITT	6,318	\$48,920,460	\$595.65	6,277	\$48,552,467	\$595.00
DICKENS	477	\$3,408,492	\$549.67	460	\$3,228,374	\$540.25
DIMMIT	2,861	\$23,512,399	\$632.25	2,599	\$18,571,060	\$549.58
DONLEY	999	\$5,813,055	\$447.61	980	\$5,608,530	\$440.08
DUVAL	2,901	\$25,014,088	\$663.20	2,734	\$22,016,726	\$619.46
EASTLAND	6,518	\$44,351,754	\$523.40	6,458	\$43,734,634	\$520.91
ECTOR	57,228	\$585,130,607	\$786.50	57,037	\$582,761,872	\$785.94
EDWARDS	434	\$3,086,934	\$546.71	409	\$2,678,115	\$504.10
EL PASO	267,311	\$2,111,326,687	\$607.57	255,283	\$1,931,109,511	\$581.89
ELLIS	36,767	\$308,427,022	\$645.28	36,534	\$305,623,198	\$643.50
ERATH	15,094	\$101,486,842	\$517.19	15,016	\$100,545,633	\$515.08
FALLS	3,208	\$22,559,044	\$540.99	3,165	\$22,141,395	\$538.19
FANNIN	6,750	\$53,453,682	\$609.13	6,146	\$43,943,857	\$550.03
FAYETTE	8,160	\$64,499,702	\$608.05	8,081	\$63,743,228	\$606.75
FISHER	881	\$6,283,914	\$548.88	850	\$6,017,352	\$544.77
FLOYD	1,664	\$11,659,524	\$538.89	1,629	\$11,304,550	\$533.92
FOARD	354	\$1,883,352	\$409.63	342	\$1,789,400	\$402.08
FORT BEND	128,501	\$1,518,988,627	\$909.30	127,156	\$1,497,364,650	\$905.83
FRANKLIN	2,904	\$22,177,539	\$587.45	2,882	\$21,980,003	\$586.60
FREESTONE	5,760	\$54,937,559	\$733.67	5,717	\$54,553,154	\$734.06
FRIO	4,693	\$31,885,783	\$522.60	4,578	\$30,195,396	\$507.37
GAINES	4,665	\$45,063,813	\$743.08	4,633	\$44,733,430	\$742.78
GALVESTON	92,175	\$977,500,566	\$815.76	91,177	\$961,137,160	\$810.88
GARZA	1,699	\$14,269,426	\$646.06	1,684	\$14,101,759	\$644.02
GILLESPIE	8,859	\$62,184,729	\$539.97	8,794	\$61,538,870	\$538.27
GLASSCOCK	346	\$2,228,195	\$494.90	335	\$2,150,530	\$493.32
GOLIAD	1,404	\$10,355,309	\$567.49	1,384	\$10,159,731	\$564.68
GONZALES	6,414	\$46,457,730	\$557.17	6,341	\$45,668,777	\$554.01
GRAY	7,830	\$78,941,050	\$775.50	7,775	\$78,202,907	\$773.68
GRAYSON	41,034	\$365,554,896	\$685.28	40,604	\$360,631,082	\$683.20
GREGG	70,922	\$678,698,587	\$736.12	70,427	\$672,883,871	\$734.95
GRIMES	7,050	\$62,465,441	\$681.53	7,001	\$61,974,729	\$680.91
GUADALUPE	28,526	\$236,056,012	\$636.56	28,315	\$233,521,185	\$634.41

*AWW = Average Weekly Wage

Table 3. Covered Employment and Wages for All Industries
First Quarter 2010

County	Total (Including Federal)			Total (Excluding Federal)		
	Employment	Wages	AWW*	Employment	Wages	AWW*
HALE	14,016	\$102,465,878	\$562.34	13,890	\$100,864,860	\$558.58
HALL	921	\$5,596,780	\$467.28	894	\$5,343,937	\$459.81
HAMILTON	2,727	\$19,589,948	\$552.59	2,696	\$19,325,912	\$551.48
HANSFORD	1,919	\$18,188,134	\$729.07	1,898	\$17,991,352	\$729.29
HARDEMAN	1,180	\$8,045,042	\$524.45	1,162	\$7,855,987	\$520.06
HARDIN	12,139	\$93,345,666	\$591.52	12,053	\$92,432,688	\$589.93
HARRIS	1,965,500	\$29,869,120,520	\$1,168.98	1,940,881	\$29,402,078,689	\$1,165.29
HARRISON	21,890	\$204,395,060	\$718.27	21,742	\$202,674,824	\$717.05
HARTLEY	1,602	\$12,066,881	\$579.29	1,594	\$11,966,003	\$577.45
HASKELL	1,867	\$13,678,565	\$563.48	1,830	\$13,333,104	\$560.55
HAYS	47,503	\$365,560,043	\$591.96	47,307	\$363,371,856	\$590.85
HEMPHILL	1,881	\$20,239,834	\$827.56	1,868	\$20,125,652	\$828.76
HENDERSON	15,699	\$114,661,270	\$561.83	15,576	\$113,483,690	\$560.46
HIDALGO	218,553	\$1,532,952,999	\$539.55	215,055	\$1,477,291,449	\$528.41
HILL	9,061	\$62,724,396	\$532.50	8,947	\$61,631,363	\$529.88
HOCKLEY	8,777	\$77,752,202	\$681.43	8,720	\$77,140,253	\$680.49
HOOD	12,451	\$97,474,898	\$602.19	12,352	\$96,360,440	\$600.09
HOPKINS	11,362	\$94,462,133	\$639.53	11,277	\$93,585,879	\$638.37
HOUSTON	6,257	\$56,432,865	\$693.78	6,163	\$55,454,117	\$692.15
HOWARD	12,019	\$109,720,164	\$702.22	11,091	\$94,368,062	\$654.52
HUDSPETH	1,153	\$11,827,789	\$788.87	792	\$5,076,418	\$493.05
HUNT	27,730	\$275,634,576	\$764.62	27,480	\$272,092,514	\$761.66
HUTCHINSON	8,477	\$110,165,514	\$999.68	8,398	\$109,272,548	\$1,000.90
IRION	507	\$5,429,167	\$823.18	504	\$5,391,357	\$823.40
JACK	2,652	\$26,314,536	\$763.37	2,633	\$26,137,207	\$763.60
JACKSON	4,871	\$38,218,416	\$603.51	4,841	\$37,930,427	\$602.71
JASPER	10,273	\$86,863,995	\$650.41	10,180	\$85,694,040	\$647.53
JEFF DAVIS	977	\$6,925,162	\$545.06	951	\$6,679,372	\$540.46
JEFFERSON	118,382	\$1,310,501,940	\$851.54	116,351	\$1,280,608,283	\$846.65
JIM HOGG	1,967	\$15,048,924	\$588.52	1,693	\$9,792,435	\$444.84
JIM WELLS	16,328	\$142,049,572	\$669.23	16,234	\$140,926,861	\$667.77
JOHNSON	37,546	\$315,783,454	\$646.97	37,294	\$312,857,078	\$645.30
JONES	3,798	\$26,627,122	\$539.34	3,702	\$25,363,974	\$526.99
KARNES	3,736	\$26,535,138	\$546.30	3,699	\$26,201,232	\$544.92
KAUFMAN	25,255	\$206,061,373	\$627.62	25,062	\$204,010,913	\$626.17
KENDALL	10,554	\$111,130,649	\$809.98	10,494	\$110,408,671	\$809.29
KENEDY	383	\$4,260,474	\$855.69	381	\$4,243,765	\$857.56
KENT	303	\$1,847,415	\$469.01	295	\$1,774,990	\$462.32
KERR	16,950	\$138,075,891	\$626.63	16,392	\$129,106,829	\$605.85
KIMBLE	1,387	\$8,281,523	\$459.18	1,373	\$8,136,487	\$455.74
KING	133	\$1,217,567	\$704.20	129	\$1,181,288	\$706.23
KINNEY	801	\$6,740,854	\$647.35	648	\$3,735,709	\$443.69
KLEBERG	12,578	\$98,615,571	\$603.10	11,654	\$84,950,666	\$560.71
KNOX	1,233	\$9,461,789	\$590.13	1,201	\$9,105,211	\$583.02
LA SALLE	1,722	\$15,721,771	\$702.44	1,597	\$13,326,755	\$641.78
LAMAR	19,303	\$154,082,186	\$614.01	19,151	\$152,419,111	\$612.23
LAMB	4,269	\$30,431,575	\$548.35	4,223	\$29,959,380	\$545.68

*AWW = Average Weekly Wage

Table 3. Covered Employment and Wages for All Industries**First Quarter 2010**

County	Total (Including Federal)			Total (Excluding Federal)		
	Employment	Wages	AWW*	Employment	Wages	AWW*
LAMPASAS	4,738	\$33,385,964	\$542.03	4,687	\$32,850,965	\$539.15
LAVACA	5,838	\$39,943,342	\$526.27	5,784	\$39,401,288	\$524.04
LEE	5,053	\$43,575,375	\$663.32	5,019	\$43,288,183	\$663.45
LEON	5,173	\$46,352,839	\$689.32	5,122	\$45,887,311	\$689.14
LIBERTY	16,256	\$133,983,772	\$634.01	16,123	\$132,564,901	\$632.48
LIMESTONE	8,735	\$63,253,346	\$557.05	8,666	\$62,631,481	\$555.92
LIPSCOMB	1,171	\$8,383,153	\$550.85	1,143	\$8,133,401	\$547.21
LIVE OAK	2,813	\$23,835,707	\$651.88	2,512	\$19,347,697	\$592.39
LLANO	4,089	\$32,937,876	\$619.63	4,061	\$32,648,343	\$618.37
LOVING	53	\$615,848	\$899.49	52	\$610,682	\$909.20
LUBBOCK	120,971	\$1,001,979,394	\$637.14	119,613	\$982,557,372	\$631.88
LYNN	1,324	\$10,224,448	\$594.18	1,292	\$9,966,785	\$593.40
MADISON	4,269	\$28,224,168	\$508.61	4,245	\$27,996,473	\$507.28
MARION	1,833	\$12,235,127	\$513.36	1,798	\$11,819,045	\$505.65
MARTIN	1,285	\$11,436,483	\$684.79	1,266	\$11,274,850	\$684.89
MASON	1,091	\$6,785,641	\$478.43	1,066	\$6,589,049	\$475.47
MATAGORDA	11,004	\$131,296,107	\$917.79	10,918	\$130,316,379	\$918.15
MAVERICK	16,118	\$104,757,573	\$499.96	15,207	\$87,881,397	\$444.55
MCCULLOCH	2,714	\$19,443,266	\$551.15	2,684	\$19,148,171	\$548.72
MCLENNAN	98,982	\$908,842,685	\$706.30	95,878	\$867,212,304	\$695.76
MCMULLEN	242	\$1,935,544	\$615.24	236	\$1,893,217	\$616.21
MEDINA	7,904	\$53,871,190	\$524.28	7,845	\$53,215,598	\$521.78
MENARD	483	\$2,755,510	\$439.15	474	\$2,696,886	\$437.97
MIDLAND	64,892	\$827,925,081	\$981.42	64,271	\$818,874,034	\$980.07
MILAM	5,503	\$53,273,450	\$744.72	5,447	\$52,685,417	\$744.07
MILLS	1,360	\$8,710,455	\$492.55	1,339	\$8,536,831	\$490.55
MITCHELL	2,352	\$18,736,139	\$612.69	2,327	\$18,480,962	\$611.01
MONTAGUE	4,665	\$34,262,872	\$564.93	4,608	\$33,668,693	\$562.04
MONTGOMERY	123,943	\$1,287,261,466	\$798.91	123,094	\$1,275,900,667	\$797.33
MOORE	9,856	\$80,890,800	\$631.35	9,780	\$79,942,664	\$628.78
MORRIS	4,048	\$37,949,558	\$721.20	4,020	\$37,649,762	\$720.49
MOTLEY	372	\$2,192,120	\$452.89	357	\$2,067,435	\$445.89
NACOGDOCHES	22,696	\$167,716,588	\$568.43	22,535	\$165,740,806	\$565.75
NAVARRO	15,226	\$114,285,013	\$577.37	15,077	\$112,807,731	\$575.56
NEWTON	1,772	\$12,030,569	\$522.25	1,734	\$11,732,491	\$520.47
NOLAN	5,991	\$45,130,664	\$579.47	5,940	\$44,592,870	\$577.45
NUECES	150,835	\$1,380,089,126	\$703.82	144,415	\$1,278,867,482	\$681.19
OCHILTREE	4,280	\$39,991,245	\$718.69	4,252	\$39,735,137	\$718.91
OLDHAM	730	\$5,135,757	\$541.42	720	\$5,056,699	\$540.50
ORANGE	21,647	\$218,933,031	\$777.97	21,529	\$217,577,391	\$777.40
PALO PINTO	7,949	\$72,085,319	\$697.58	7,880	\$71,334,598	\$696.38
PANOLA	8,571	\$81,288,991	\$729.55	8,491	\$80,452,739	\$728.85
PARKER	25,053	\$204,949,408	\$629.29	24,869	\$202,709,002	\$627.01
PARMER	5,023	\$36,075,749	\$552.43	4,958	\$35,227,264	\$546.51
PECOS	5,942	\$60,926,855	\$788.69	5,879	\$60,103,323	\$786.37
POLK	10,675	\$79,523,795	\$573.04	10,548	\$77,980,134	\$568.67
POTTER	73,525	\$694,353,603	\$726.44	71,595	\$664,926,703	\$714.41

*AWW = Average Weekly Wage

Table 3. Covered Employment and Wages for All Industries
First Quarter 2010

County	Total (Including Federal)			Total (Excluding Federal)		
	Employment	Wages	AWW*	Employment	Wages	AWW*
PRESIDIO	2,227	\$18,187,556	\$628.12	1,852	\$11,410,471	\$474.02
RAINS	1,688	\$10,679,885	\$486.78	1,663	\$10,385,668	\$480.40
RANDALL	28,294	\$213,952,876	\$581.68	28,204	\$212,902,837	\$580.67
REAGAN	1,854	\$19,037,662	\$790.02	1,838	\$18,889,950	\$790.72
REAL	704	\$4,020,309	\$439.49	698	\$3,963,703	\$436.82
RED RIVER	2,731	\$18,493,533	\$520.90	2,686	\$18,070,503	\$517.45
REEVES	3,990	\$32,625,596	\$628.99	3,901	\$31,396,417	\$619.10
REFUGIO	2,188	\$17,358,030	\$610.25	2,133	\$16,834,228	\$607.00
ROBERTS	262	\$1,800,418	\$527.93	254	\$1,744,651	\$529.06
ROBERTSON	3,648	\$32,408,580	\$683.38	3,600	\$31,927,811	\$682.16
ROCKWALL	20,220	\$162,517,405	\$618.27	20,119	\$161,306,820	\$616.74
RUNNELS	2,850	\$20,354,151	\$549.37	2,807	\$19,928,207	\$546.05
RUSK	14,284	\$138,769,320	\$747.31	14,195	\$137,820,430	\$746.85
SABINE	2,082	\$24,427,564	\$902.66	2,027	\$23,845,311	\$905.06
SAN AUGUSTINE	1,623	\$11,525,032	\$546.35	1,604	\$11,334,781	\$543.70
SAN JACINTO	2,143	\$15,145,810	\$543.66	2,103	\$14,754,539	\$539.69
SAN PATRICIO	17,054	\$163,094,573	\$735.63	16,878	\$160,912,071	\$733.39
SAN SABA	1,683	\$11,096,855	\$507.29	1,660	\$10,903,511	\$505.36
SCHLEICHER	767	\$6,036,690	\$605.42	754	\$5,906,011	\$602.53
SCURRY	6,260	\$61,759,674	\$758.86	6,218	\$61,312,002	\$758.45
SHACKELFORD	1,078	\$8,332,076	\$594.55	1,061	\$8,171,750	\$592.46
SHELBY	8,014	\$55,415,235	\$531.91	7,929	\$54,488,429	\$528.62
SHERMAN	864	\$6,385,503	\$568.29	851	\$6,258,438	\$565.93
SMITH	89,938	\$832,937,622	\$712.41	89,041	\$819,162,973	\$707.68
SOMERVELL	3,809	\$62,225,315	\$1,256.76	3,793	\$62,041,793	\$1,258.34
STARR	14,040	\$87,311,801	\$478.37	13,436	\$76,730,117	\$439.29
STEPHENS	3,043	\$23,909,076	\$604.32	3,019	\$23,670,666	\$603.05
STERLING	506	\$5,075,430	\$772.09	504	\$5,032,002	\$768.52
STONEWALL	514	\$3,353,083	\$502.13	498	\$3,210,373	\$495.56
SUTTON	2,309	\$35,784,701	\$1,192.32	2,301	\$35,701,163	\$1,193.67
SWISHER	1,983	\$14,587,714	\$565.88	1,948	\$14,210,800	\$561.26
TARRANT	737,804	\$8,345,678,090	\$870.12	723,415	\$8,088,789,552	\$860.11
TAYLOR	56,247	\$438,857,136	\$600.18	54,995	\$425,654,355	\$595.38
TERRELL	324	\$2,981,109	\$707.04	254	\$1,690,887	\$512.08
TERRY	3,724	\$31,520,192	\$651.14	3,688	\$31,124,175	\$649.24
THROCKMORTON	492	\$2,973,242	\$464.54	479	\$2,847,786	\$457.01
TITUS	16,308	\$127,680,141	\$602.24	16,190	\$126,245,274	\$599.84
TOM GREEN	43,599	\$356,812,934	\$629.53	42,254	\$340,952,724	\$620.71
TRAVIS	555,288	\$7,062,519,388	\$978.36	544,829	\$6,925,770,955	\$977.83
TRINITY	2,256	\$13,840,457	\$471.85	2,216	\$13,518,201	\$469.32
TYLER	3,955	\$27,582,684	\$536.52	3,893	\$26,942,670	\$532.41
UPSHUR	6,366	\$49,179,986	\$594.23	6,304	\$48,550,472	\$592.43
UPTON	1,364	\$16,957,184	\$956.54	1,354	\$16,884,449	\$959.00
UVALDE	9,063	\$62,713,621	\$532.27	8,809	\$58,236,993	\$508.54
VAL VERDE	16,716	\$128,912,800	\$593.21	14,498	\$96,837,804	\$513.81
VAN ZANDT	9,583	\$68,182,109	\$547.32	9,488	\$67,177,629	\$544.66
VICTORIA	35,974	\$317,821,764	\$679.59	35,608	\$313,882,493	\$678.07

*AWW = Average Weekly Wage

Table 3. Covered Employment and Wages for All Industries
First Quarter 2010

County	Total (Including Federal)			Total (Excluding Federal)		
	Employment	Wages	AWW*	Employment	Wages	AWW*
WALKER	23,480	\$188,072,293	\$616.14	23,330	\$186,159,636	\$613.79
WALLER	13,460	\$124,271,779	\$710.19	13,400	\$123,645,076	\$709.81
WARD	3,408	\$38,623,505	\$871.70	3,387	\$38,387,721	\$871.83
WASHINGTON	14,287	\$109,325,871	\$588.62	14,209	\$108,405,950	\$586.88
WEBB	84,307	\$620,256,794	\$565.93	81,030	\$563,168,259	\$534.62
WHARTON	14,282	\$108,494,298	\$584.37	14,186	\$107,440,427	\$582.58
WHEELER	2,040	\$16,142,854	\$608.80	2,007	\$15,865,859	\$608.10
WICHITA	52,320	\$423,140,219	\$622.12	50,180	\$401,101,179	\$614.86
WILBARGER	6,869	\$52,135,117	\$583.81	6,821	\$51,573,776	\$581.65
WILLACY	3,737	\$28,756,025	\$591.92	3,585	\$26,528,891	\$569.18
WILLIAMSON	118,104	\$1,338,939,143	\$872.07	116,499	\$1,318,171,980	\$870.38
WILSON	6,352	\$41,807,158	\$506.31	6,287	\$41,149,531	\$503.48
WINKLER	2,197	\$25,304,070	\$886.10	2,184	\$25,171,034	\$886.55
WISE	18,144	\$167,890,390	\$711.77	18,010	\$166,481,823	\$711.05
WOOD	9,012	\$65,419,776	\$558.40	8,916	\$64,431,607	\$555.89
YOAKUM	3,145	\$37,724,287	\$922.69	3,126	\$37,534,570	\$923.63
YOUNG	6,618	\$60,864,903	\$707.45	6,564	\$60,237,741	\$705.92
ZAPATA	3,403	\$32,665,878	\$738.47	3,228	\$29,678,942	\$707.32
ZAVALA	2,965	\$16,153,204	\$419.03	2,954	\$16,015,504	\$417.00

*AWW = Average Weekly Wage

TEXAS
WORKFORCE SOLUTIONS



Another quality product from
Texas Workforce Commission
Labor Market and Career Information

101 East 15th Street, Room 0252
Austin, Texas 78778-0001
1-866-938-4444
(512) 936-3278
FAX: (512) 936-3208
www.lmci.state.tx.us

Equal Opportunity Employer/Programs. Auxiliary aids and services are available,
on request, to individuals with disabilities.
Contact Relay Texas @ 7-1-1

Copies of this publication have been distributed in compliance with the State Depository Law, and are available for public use through the Texas State Publication Depository Program at the Texas State Library and other state depository libraries.