

W2200.6  
EM 74  
2009/4th

Government Publications  
Texas State Documents

JUN 10 2010

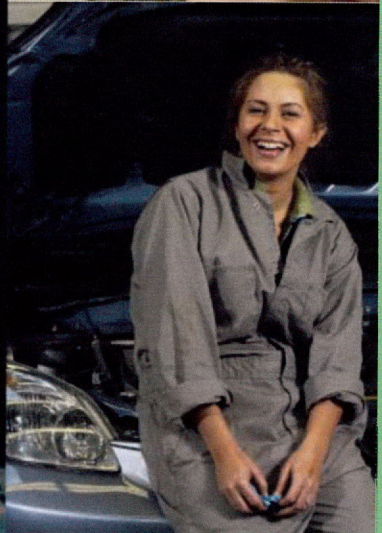
Government Publications  
Texas State Documents

JUN 10 2010

Depository  
Dallas Public Library  
**FOURTH QUARTER 2009**

Depository  
Dallas Public Library

# TEXAS QUARTERLY CENSUS OF EMPLOYMENT & WAGES



by Industry and County



Prepared by the Labor Market & Career Information  
Department, Texas Workforce Commission



# **Quarterly Census of Employment and Wages by Industry & County**

## **Employment and Payroll under the Texas Unemployment Compensation Act**

### **Description of the Data**

This publication contains employment data, payroll data, and average weekly wages by county for the specified quarter. These data were compiled from quarterly employment and wage reports submitted by employers subject to the Texas Unemployment Compensation Act. Quarterly average employment data have been tabulated by industry according to the North American Industry Classification System (NAICS) manual (see Industry Classification below) on a statewide and county basis. Payroll data represent the total wages paid by the establishment during the quarter. Total wages are provided for each county and by industry for the state. Average weekly wage data are computed from employment and total wages reported by all establishments as well as just those establishments subject to the Texas Unemployment Compensation Act. Average weekly wages are not to be confused with "prevailing" wage rates in various industries.

### **Industry Classification**

Since the release of first quarter 2001 data, industry information has been provided under the newer North American Industry Classification System (NAICS). Beginning with first quarter 2007 data, the Texas Workforce Commission (TWC) released Quarterly Census of Employment and Wage (QCEW) data using the NAICS 2007 revision. The purpose of this revision was to keep up with new and emerging technology industries. This revision was minor in the scope of the QCEW data set, as 12 NAICS 2002 codes became obsolete, and 6 NAICS 2007 codes were established. Because there were no plans for historical reconstruction of the data series, a series break occurred, canceling the ability for a time series analysis for those selected industries. For more information on the new NAICS 2007 code changes, see the following web link: <http://www.census.gov/epcd/www/naics.html>.

### **Definition of covered employment, wages, and average weekly wage**

Covered employment is the number of workers employed by employers subject to the Texas Unemployment Compensation Act during the pay period which included the 12<sup>th</sup> day of the month. Excluded from coverage are employment covered by the Railroad Retirement Act, self-employed, and unpaid family members.

The payroll data (total wages) used in this publication includes all wages and salaries paid to covered employees by their employers including bonuses, commissions, and cash values or remuneration received in any medium other than cash.

The average weekly wage is the numeric calculation of total wages for the county divided by the number of employees in the county, divided by the number 13 (the weeks in a quarter). This figure is listed in Table 3 for those establishments that are covered by the Texas Unemployment Compensation Act, and for all employers (those covered plus Federal Government employment).

## NAICS Industry Structure

The NAICS industry hierarchy classifies data to the six-digit level. The first level consists of the Goods-Producing and Service-Providing industries. Below this is the Super Sector level. The third layer is the Sector level. Statewide data is published at both the Super Sector and Sector levels. Data for the 254 Texas counties are published at the Super Sector level only.

### NAICS Sector Aggregation Tree

	SUPER SECTOR	SECTOR	
<b>Total Employment</b>	<b>Goods-Producing Industries</b>	(A) Natural Resources & Mining Group	Sector 11 - Agriculture, Forestry, Fishing and Hunting
			Sector 21 – Mining
		(B) Construction	Sector 23 – Construction
		(C) Manufacturing	Sector 31-33 – Manufacturing
		(D) Trade, Transportation, and Utilities Group	Sector 22 - Utilities
			Sector 42 – Wholesale Trade
	Sector 44-45 – Retail Trade		
		Sector 48-49 – Transportation and Warehousing	
	(E) Information	Sector 51 – Information	
	<b>Service-Providing Industries</b>	(F) Financial Activities Group	Sector 52 – Finance and Insurance
			Sector 53 – Real Estate, Rental and Leasing
		(G) Professional and Business Svcs. Group	Sector 54 – Professional, Scientific and Technical Services
			Sector 55 – Management of Companies and Enterprises
			Sector 56 – Administrative and Support, Waste Mgmt. and Remediation Svcs.
(H) Education & Health Services Group		Sector 61 – Educational Services	
		Sector 62 – Health Care and Social Assistance	
(I) Leisure & Hospitality Group		Sector 71 – Arts, Entertainment, and Recreation	
		Sector 72 – Accommodations and Food Services	
(J) Other Services		Sector 81 – Other Services (ex. Public Adm.)	
(K) Public Administration	Sector 92 - Public Administration		
(L) Unclassified	Sector 99 - Unclassified Establishments		

**Table 1. State Summary  
Employment and Total Payrolls by Industry  
Fourth Quarter 2009**

Industry Group	Industry Code	UI Accounts	Reporting Units	Employment Month 1	Employment Month 2	Employment Month 3	Qtr. Average Employment	Total Wages	Average Weekly Wage
<b>Agriculture, Forestry, Fishing &amp; Hunting</b>	<b>11</b>	<b>9,152</b>	<b>9,345</b>	<b>58,777</b>	<b>60,963</b>	<b>59,734</b>	<b>59,825</b>	<b>\$460,713,035</b>	<b>\$592.39</b>
Crop Production	111	3,748	3,782	20,960	21,372	20,642	20,991	\$141,086,741	\$517.01
Animal Production	112	3,613	3,675	22,737	22,516	22,616	22,623	\$183,045,441	\$622.39
Forestry and Logging	113	285	292	1,885	1,918	1,898	1,900	\$20,675,763	\$836.93
Fishing, Hunting and Trapping	114	131	131	418	412	436	422	\$2,856,224	\$520.64
Agriculture & Forestry Support Activity	115	1,385	1,465	12,777	14,745	14,142	13,888	\$113,048,866	\$626.16
<b>Mining, Quarrying, and Oil and Gas Extraction</b>	<b>21</b>	<b>6,838</b>	<b>8,502</b>	<b>194,110</b>	<b>195,230</b>	<b>197,658</b>	<b>195,666</b>	<b>\$5,991,796,856</b>	<b>\$2,355.58</b>
Oil and Gas Extraction	211	3,337	4,097	84,869	85,048	85,730	85,216	\$3,561,246,380	\$3,214.69
Mining (except Oil and Gas)	212	296	402	9,410	9,375	9,309	9,365	\$134,028,489	\$1,100.93
Support Activities for Mining	213	3,243	4,003	99,831	100,807	102,619	101,086	\$2,296,521,987	\$1,747.58
<b>Utilities</b>	<b>22</b>	<b>1,068</b>	<b>1,854</b>	<b>48,296</b>	<b>48,306</b>	<b>48,257</b>	<b>48,286</b>	<b>\$1,065,984,807</b>	<b>\$1,698.18</b>
Utilities	221	1,068	1,854	48,296	48,306	48,257	48,286	\$1,065,984,807	\$1,698.18
<b>Construction</b>	<b>23</b>	<b>41,114</b>	<b>44,063</b>	<b>574,028</b>	<b>567,218</b>	<b>562,513</b>	<b>567,920</b>	<b>\$7,818,592,596</b>	<b>\$1,059.01</b>
Construction of Buildings	236	11,285	12,163	134,526	132,838	132,019	133,128	\$2,249,876,740	\$1,300.01
Heavy and Civil Engineering Construction	237	3,994	4,356	109,102	108,199	107,496	108,266	\$1,633,642,175	\$1,160.71
Specialty Trade Contractors	238	25,999	27,544	330,400	326,181	322,998	326,526	\$3,935,073,681	\$927.02
<b>Manufacturing</b>	<b>31-33</b>	<b>19,880</b>	<b>23,123</b>	<b>816,609</b>	<b>812,379</b>	<b>812,022</b>	<b>813,670</b>	<b>\$13,186,531,442</b>	<b>\$1,246.63</b>
Food Manufacturing	311	1,550	1,795	90,150	90,403	90,129	90,227	\$902,901,879	\$769.77
Beverage & Tobacco Product Manufacturing	312	199	276	11,300	11,245	11,221	11,255	\$155,626,686	\$1,063.61
Textile Mills	313	101	103	2,464	2,474	2,466	2,468	\$22,682,843	\$706.98
Textile Product Mills	314	481	495	6,121	6,153	6,164	6,146	\$48,879,183	\$611.77
Apparel Manufacturing	315	279	284	4,943	4,966	5,033	4,981	\$39,661,169	\$612.54
Leather and Allied Product Manufacturing	316	141	148	3,947	4,001	3,990	3,979	\$35,575,823	\$687.70
Wood Product Manufacturing	321	678	786	20,275	19,853	19,721	19,950	\$193,062,603	\$744.42
Paper Manufacturing	322	248	320	17,690	17,681	17,719	17,697	\$259,704,216	\$1,128.87
Printing and Related Support Activities	323	2,057	2,207	28,746	28,655	28,627	28,676	\$327,297,519	\$877.97
Petroleum & Coal Products Manufacturing	324	174	250	25,101	25,006	24,988	25,032	\$641,164,910	\$1,970.32
Chemical Manufacturing	325	1,050	1,401	71,566	71,453	71,546	71,522	\$1,607,785,971	\$1,729.21

**Table 1. State Summary  
Employment and Total Payrolls by Industry  
Fourth Quarter 2009**

Industry Group	Industry Code	UI Accounts	Reporting Units	Employment Month 1	Employment Month 2	Employment Month 3	Qtr. Average Employment	Total Wages	Average Weekly Wage
Plastics & Rubber Products Manufacturing	326	742	856	38,112	37,938	37,783	37,944	\$442,996,368	\$898.07
Nonmetallic Mineral Product Mfg	327	849	1,205	34,238	34,150	33,711	34,033	\$409,403,924	\$925.36
Primary Metal Manufacturing	331	381	417	19,014	19,028	19,153	19,065	\$266,897,876	\$1,076.87
Fabricated Metal Product Manufacturing	332	4,235	4,620	112,155	111,375	111,203	111,578	\$1,565,690,154	\$1,079.41
Machinery Manufacturing	333	1,788	2,096	81,907	81,351	81,477	81,578	\$1,486,527,040	\$1,401.70
Computer and Electronic Product Mfg	334	1,149	1,342	97,018	95,967	96,486	96,490	\$2,421,902,856	\$1,930.77
Electrical Equipment and Appliances	335	415	461	17,253	17,111	17,060	17,141	\$268,960,231	\$1,206.98
Transportation Equipment Manufacturing	336	884	1,003	83,538	82,886	83,005	83,143	\$1,544,297,453	\$1,428.77
Furniture and Related Product Mfg	337	1,098	1,131	23,581	23,220	23,049	23,283	\$221,475,449	\$731.71
Miscellaneous Manufacturing	339	1,860	1,927	27,490	27,463	27,491	27,481	\$324,037,289	\$907.01
<b>Wholesale Trade</b>	<b>42</b>	<b>34,985</b>	<b>41,564</b>	<b>490,288</b>	<b>489,008</b>	<b>489,782</b>	<b>489,693</b>	<b>\$8,723,687,248</b>	<b>\$1,370.36</b>
Merchant Wholesalers, Durable Goods	423	15,888	19,775	276,414	275,516	276,056	275,995	\$5,097,580,485	\$1,420.75
Merchant Wholesalers, Nondurable Goods	424	7,282	9,189	155,947	155,562	155,321	155,610	\$2,393,320,020	\$1,183.10
Electronic Markets and Agents/Brokers	425	12,003	12,600	57,927	57,930	58,405	58,087	\$1,232,786,743	\$1,632.54
<b>Retail Trade</b>	<b>44-45</b>	<b>42,541</b>	<b>70,408</b>	<b>1,136,029</b>	<b>1,160,152</b>	<b>1,174,396</b>	<b>1,156,859</b>	<b>\$8,016,114,051</b>	<b>\$533.02</b>
Motor Vehicle and Parts Dealers	441	6,499	9,014	141,031	140,163	139,494	140,229	\$1,504,970,628	\$825.55
Furniture and Home Furnishings Stores	442	2,507	3,551	38,293	39,058	39,411	38,921	\$324,327,970	\$641.00
Electronics and Appliance Stores	443	2,148	3,257	41,428	42,721	43,470	42,540	\$408,824,559	\$739.26
Building Material & Garden Supply Stores	444	3,115	4,931	86,878	86,326	85,649	86,284	\$716,269,712	\$638.56
Food and Beverage Stores	445	6,378	8,358	204,139	205,526	205,422	205,029	\$1,188,023,882	\$445.72
Health and Personal Care Stores	446	3,124	6,840	65,474	66,739	69,205	67,139	\$629,574,307	\$721.32
Gasoline Stations	447	5,186	8,729	69,564	69,189	69,103	69,285	\$349,306,406	\$387.81
Clothing and Clothing Accessories Stores	448	4,090	9,183	112,743	121,334	128,048	120,708	\$546,988,260	\$348.58
Sporting Goods/Hobby/Book/Music Stores	451	1,883	3,283	38,807	41,821	43,322	41,317	\$204,997,531	\$381.66
General Merchandise Stores	452	686	4,245	258,748	269,119	272,213	266,693	\$1,542,094,342	\$444.79
Miscellaneous Store Retailers	453	5,614	7,176	59,516	58,461	58,876	58,951	\$372,918,911	\$486.61
Nonstore Retailers	454	1,647	1,841	19,408	19,695	20,183	19,762	\$227,817,543	\$886.77
<b>Transportation and Warehousing</b>	<b>48-49</b>	<b>12,723</b>	<b>15,419</b>	<b>348,910</b>	<b>349,790</b>	<b>355,482</b>	<b>351,394</b>	<b>\$4,541,378,868</b>	<b>\$994.15</b>
Air Transportation	481	376	485	60,319	60,364	60,515	60,399	\$1,015,828,111	\$1,293.73
Rail Transportation	482	10	10	58	55	57	57	\$580,959	\$788.63

**Table 1. State Summary  
Employment and Total Payrolls by Industry  
Fourth Quarter 2009**

Industry Group	Industry Code	UI Accounts	Reporting Units	Employment Month 1	Employment Month 2	Employment Month 3	Qtr. Average Employment	Total Wages	Average Weekly Wage
Water Transportation	483	148	157	5,026	5,010	5,002	5,013	\$100,251,227	\$1,538.43
Truck Transportation	484	6,485	7,334	103,629	103,153	103,202	103,328	\$1,164,947,004	\$867.25
Transit and Ground Passenger Transport	485	501	672	17,990	18,021	17,992	18,001	\$123,599,465	\$528.17
Pipeline Transportation	486	140	591	13,564	13,551	13,574	13,563	\$426,569,015	\$2,419.30
Scenic and Sightseeing Transportation	487	86	86	749	768	750	756	\$4,340,516	\$441.84
Support Activities for Transportation	488	3,284	3,698	66,092	65,983	68,716	66,930	\$864,720,651	\$993.82
Postal Service	491	73	74	334	329	332	332	\$2,086,568	\$483.94
Couriers and Messengers	492	836	1,122	34,141	35,719	38,480	36,113	\$364,754,853	\$776.94
Warehousing and Storage	493	907	1,190	47,008	46,837	46,862	46,902	\$473,700,499	\$776.90
<b>Information</b>	<b>51</b>	<b>5,669</b>	<b>9,775</b>	<b>200,581</b>	<b>201,226</b>	<b>201,974</b>	<b>201,260</b>	<b>\$3,659,891,943</b>	<b>\$1,398.84</b>
Publishing Industries	511	1,909	2,214	41,970	42,121	41,920	42,004	\$771,705,357	\$1,413.26
Motion Picture & Sound Recording Ind	512	874	1,053	15,355	15,947	16,849	16,050	\$178,111,363	\$853.62
Broadcasting (except Internet)	515	509	739	21,840	21,834	21,917	21,864	\$293,259,440	\$1,031.78
Telecommunications	517	1,238	4,088	91,501	91,390	91,105	91,332	\$1,584,273,751	\$1,334.33
Data Processing, Hosting and Related Services	518	686	1,108	25,607	25,563	25,832	25,667	\$761,728,445	\$2,282.84
Other Information Services	519	536	573	4,308	4,371	4,351	4,343	\$70,813,587	\$1,254.15
<b>Finance and Insurance</b>	<b>52</b>	<b>20,463</b>	<b>34,639</b>	<b>443,978</b>	<b>444,905</b>	<b>446,431</b>	<b>445,105</b>	<b>\$7,649,495,542</b>	<b>\$1,321.99</b>
Monetary Authorities-Central Bank	521	31	44	1,822	1,801	1,800	1,808	\$36,097,573	\$1,536.09
Credit Intermediation & Related Activity	522	4,419	13,228	236,116	237,197	238,068	237,127	\$3,314,092,027	\$1,075.08
Financial Investment & Related Activity	523	4,762	7,231	47,698	47,838	48,262	47,933	\$1,642,770,914	\$2,636.34
Insurance Carriers & Related Activities	524	10,855	13,547	150,623	150,229	150,353	150,402	\$2,480,453,435	\$1,268.63
Funds, Trusts & Other Financial Vehicles	525	541	589	7,719	7,840	7,948	7,836	\$176,081,593	\$1,728.60
<b>Real Estate and Rental and Leasing</b>	<b>53</b>	<b>18,282</b>	<b>25,387</b>	<b>172,428</b>	<b>171,729</b>	<b>172,254</b>	<b>172,137</b>	<b>\$2,023,035,415</b>	<b>\$904.04</b>
Real Estate	531	15,495	20,077	117,790	117,531	118,034	117,785	\$1,388,069,978	\$906.52
Rental and Leasing Services	532	2,528	5,005	52,403	51,963	52,012	52,126	\$589,282,876	\$869.61
Lessors, Nonfinancial Intangible Assets	533	302	305	2,235	2,235	2,208	2,226	\$45,682,561	\$1,578.64
<b>Professional and Technical Services</b>	<b>54</b>	<b>62,272</b>	<b>68,574</b>	<b>552,513</b>	<b>558,174</b>	<b>560,867</b>	<b>557,185</b>	<b>\$11,987,814,903</b>	<b>\$1,655.00</b>
Professional and Technical Services	541	62,272	68,574	552,513	558,174	560,867	557,185	\$11,987,814,903	\$1,655.00

**Table 1. State Summary  
Employment and Total Payrolls by Industry  
Fourth Quarter 2009**

Industry Group	Industry Code	UI Accounts	Reporting Units	Employment Month 1	Employment Month 2	Employment Month 3	Qtr. Average Employment	Total Wages	Average Weekly Wage
<b>Management of Companies and Enterprises</b>	<b>55</b>	<b>1,825</b>	<b>2,218</b>	<b>75,152</b>	<b>75,300</b>	<b>75,634</b>	<b>75,362</b>	<b>\$1,864,302,742</b>	<b>\$1,902.92</b>
Management of Companies and Enterprises	551	1,825	2,218	75,152	75,300	75,634	75,362	\$1,864,302,742	\$1,902.92
<b>Administrative and Waste Services</b>	<b>56</b>	<b>24,997</b>	<b>29,503</b>	<b>610,365</b>	<b>611,727</b>	<b>606,899</b>	<b>609,664</b>	<b>\$5,710,576,394</b>	<b>\$720.52</b>
Administrative and Support Services	561	23,881	28,102	586,014	587,313	582,295	585,207	\$5,388,339,690	\$708.27
Waste Management and Remediation Service	562	1,145	1,401	24,351	24,414	24,604	24,456	\$322,236,704	\$1,013.54
<b>Educational Services</b>	<b>61</b>	<b>4,727</b>	<b>5,140</b>	<b>120,195</b>	<b>120,578</b>	<b>118,692</b>	<b>119,822</b>	<b>\$1,266,995,109</b>	<b>\$813.39</b>
Educational Services	611	4,727	5,140	120,195	120,578	118,692	119,822	\$1,266,995,109	\$813.39
<b>Health Care and Social Assistance</b>	<b>62</b>	<b>45,602</b>	<b>54,106</b>	<b>1,154,088</b>	<b>1,155,593</b>	<b>1,159,479</b>	<b>1,156,387</b>	<b>\$13,089,869,519</b>	<b>\$870.74</b>
Ambulatory Health Care Services	621	36,632	41,440	566,797	567,761	570,747	568,435	\$7,324,889,768	\$991.24
Hospitals	622	568	745	285,722	285,888	287,242	286,284	\$3,938,057,210	\$1,058.14
Nursing and Residential Care Facilities	623	2,130	3,312	166,312	166,909	167,052	166,758	\$1,097,459,829	\$506.24
Social Assistance	624	6,448	8,609	135,257	135,035	134,438	134,910	\$729,462,712	\$415.93
<b>Arts, Entertainment, and Recreation</b>	<b>71</b>	<b>5,441</b>	<b>5,903</b>	<b>107,670</b>	<b>102,869</b>	<b>102,787</b>	<b>104,442</b>	<b>\$872,072,695</b>	<b>\$642.29</b>
Performing Arts and Spectator Sports	711	1,723	1,753	23,702	22,301	22,836	22,946	\$455,067,353	\$1,525.52
Museums, Parks and Historical Sites	712	263	279	7,742	7,872	7,937	7,850	\$57,914,562	\$567.49
Amusement, Gambling & Recreation Ind	713	3,472	3,871	76,226	72,696	72,014	73,645	\$359,090,780	\$375.07
<b>Accommodation and Food Services</b>	<b>72</b>	<b>30,109</b>	<b>41,811</b>	<b>882,177</b>	<b>881,750</b>	<b>879,615</b>	<b>881,181</b>	<b>\$3,698,301,440</b>	<b>\$322.84</b>
Accommodation	721	3,943	4,869	97,739	97,591	96,651	97,327	\$593,987,848	\$469.46
Food Services and Drinking Places	722	26,197	36,942	784,438	784,159	782,964	783,854	\$3,104,313,592	\$304.64
<b>Other Services, Ex. Public Admin</b>	<b>81</b>	<b>51,153</b>	<b>55,019</b>	<b>288,236</b>	<b>289,178</b>	<b>288,399</b>	<b>288,604</b>	<b>\$2,245,073,686</b>	<b>\$598.39</b>
Repair and Maintenance	811	14,184	15,165	103,055	103,915	103,493	103,488	\$1,023,252,288	\$760.59
Personal and Laundry Services	812	9,234	11,208	93,394	93,163	93,340	93,299	\$565,390,719	\$466.15
Membership Organizations & Associations	813	5,035	5,842	58,399	58,817	58,163	58,460	\$496,245,179	\$652.98
Private Households	814	22,800	22,804	33,388	33,283	33,403	33,358	\$160,185,500	\$369.39
<b>Unclassified</b>	<b>99</b>	<b>3,286</b>	<b>3,291</b>	<b>4,727</b>	<b>5,269</b>	<b>5,697</b>	<b>5,231</b>	<b>\$57,630,763</b>	<b>\$847.47</b>



**Table 1. State Summary  
Employment and Total Payrolls by Industry  
Fourth Quarter 2009**

Industry Group	Industry Code	UI Accounts	Reporting Units	Employment Month 1	Employment Month 2	Employment Month 3	Qtr. Average Employment	Total Wages	Average Weekly Wage
Federal Government		89	4,111	199,004	198,134	197,386	198,175	\$3,511,753,325	\$1,363.12
State Government		207	3,744	360,843	362,778	362,927	362,183	\$4,039,917,021	\$858.03
Local Government		3,929	9,570	1,265,404	1,276,330	1,269,993	1,270,576	\$12,838,174,688	\$777.25
All Industries and Federal Agencies		441,864	567,069	10,104,408	10,138,586	10,148,878	10,130,624	\$124,319,704,088	\$943.97
Industries With Texas UI Coverage Only		441,775	562,958	9,905,404	9,940,452	9,951,492	9,932,449	\$120,807,950,763	\$935.61

\* Number of UI accounts does not add across industries because some UI accounts have reporting units in multiple industries.

**Table 2. County Employment by Industry**  
**Fourth Quarter 2009**

County	Total Employment	(A)	(B)	(C)	(D)	(E)	(F)	(G)	(H)	(I)	(J)	(L)	Fed	State	Local
ANDERSON	17,385	820	562	433	4,354	235	640	940	1,885	1,161	395	3,539	144	---	2,276
ANDREWS	5,099	1,139	539	118	777	32	322	302	146	317	144	2	17	35	1,210
ANGELINA	34,903	403	1,390	4,185	6,378	486	1,268	2,520	7,105	2,979	699	3	399	1,689	5,399
ARANSAS	5,441	251	241	45	1,325	61	271	300	555	1,129	171	10	23	106	954
ARCHER	1,951	308	125	100	524	---	53	144	85	39	54	15	22	34	447
ARMSTRONG	392	19	33	---	43	0	---	66	---	---	---	94	7	20	110
ATASCOSA	9,330	863	499	297	2,088	69	356	368	1,379	650	372	10	55	108	2,217
AUSTIN	12,000	156	923	3,470	2,627	82	375	596	888	635	254	20	100	399	1,474
BAILEY	2,727	672	102	145	585	102	75	57	75	196	40	11	31	36	601
BANDERA	2,943	127	246	23	470	30	114	129	326	545	93	7	16	46	770
BASTROP	14,274	424	881	1,116	2,736	89	491	772	1,241	1,501	402	3	402	325	3,891
BAYLOR	1,223	45	54	57	191	---	65	29	341	90	52	9	21	42	227
BEE	8,472	423	177	111	1,474	89	238	235	1,047	752	210	1,910	51	---	1,753
BELL	104,694	313	3,996	6,276	20,078	2,222	4,386	7,887	16,043	9,695	2,985	51	10,888	1,294	18,580
BEXAR	717,384	3,341	36,611	32,727	121,848	18,067	60,456	94,051	105,868	85,439	21,913	121	32,508	18,052	86,382
BLANCO	2,673	216	332	77	383	15	135	422	153	270	59	0	67	72	472
BORDEN	163	25	0	0	29	0	0	6	0	0	---	2	3	23	74
BOSQUE	3,646	79	204	496	673	26	170	133	410	193	76	4	75	53	1,055
BOWIE	42,996	93	1,365	1,762	9,250	510	2,109	2,784	8,039	4,145	1,035	13	5,205	1,350	5,336
BRAZORIA	83,583	1,064	9,997	11,485	16,206	591	3,179	5,410	6,951	7,865	2,594	30	494	2,913	14,804
BRAZOS	87,504	1,745	4,204	4,789	11,737	1,135	2,947	5,537	9,527	9,833	2,115	12	900	24,222	8,802
BREWSTER	4,872	131	139	84	1,105	118	201	180	398	778	88	869	322	---	460
BRISCOE	422	115	20	---	53	---	22	18	---	30	6	34	15	30	79
BROOKS	2,422	280	47	---	322	10	64	---	367	270	60	157	281	43	522
BROWN	15,158	129	563	2,910	2,711	168	508	434	3,215	1,206	395	4	139	826	1,950
BURLESON	3,564	511	274	239	744	13	153	112	213	263	106	0	52	51	831
BURNET	11,875	92	927	870	2,555	219	558	975	1,243	1,555	321	4	82	299	2,175
CALDWELL	6,729	293	226	260	1,447	29	272	334	1,246	632	149	6	53	145	1,636
CALHOUN	9,727	304	1,900	2,795	1,113	40	277	569	398	621	122	6	39	70	1,474
CALLAHAN	2,103	116	97	128	430	---	95	41	189	183	48	14	48	43	671
CAMERON	123,563	586	3,410	6,062	23,110	2,146	4,904	8,542	29,794	11,233	3,065	42	2,805	4,439	23,425
CAMP	4,211	---	267	166	1,019	---	302	122	504	256	62	1,457	33	24	---
CARSON	4,796	127	105	---	329	10	34	63	---	38	97	3,297	249	38	409
CASS	7,558	241	305	1,261	1,234	22	358	264	1,115	506	173	4	63	225	1,787
CASTRO	2,596	820	39	53	487	6	78	39	210	83	124	0	25	32	600
CHAMBERS	9,541	432	507	1,731	1,834	---	733	754	398	964	271	21	60	44	1,792
CHEROKEE	14,665	731	558	2,256	2,283	110	511	625	2,021	1,080	208	10	78	1,995	2,201

(A) - Natural Resources and Mining	(D) - Trade, Transportation Utilities	(G) - Professional Business Services	(J) - Other Services
(B) - Construction	(E) - Information	(H) - Education Health Services	(L) - Unclassified
(C) - Manufacturing	(F) - Financial Activities	(I) - Leisure Hospitality	

## Table 2. County Employment by Industry

Fourth Quarter 2009

County	Total Employment	(A)	(B)	(C)	(D)	(E)	(F)	(G)	(H)	(I)	(J)	(L)	Fed	State	Local
CHILDRESS	2,556	77	61	---	494	30	82	40	210	310	41	12	33	481	686
CLAY	1,582	105	108	83	306	---	65	42	180	53	39	3	27	37	534
COCHRAN	868	218	---	0	162	---	20	---	77	16	8	29	16	26	296
COKE	728	25	63	---	115	7	34	18	30	51	17	6	17	23	323
COLEMAN	2,239	48	188	68	467	28	112	41	291	183	40	0	43	29	702
COLLIN	282,818	1,074	11,242	20,216	52,502	17,256	26,283	45,618	29,995	30,029	7,710	4,536	1,404	---	34,952
COLLINGSWORTH	906	121	7	---	140	---	34	49	180	59	27	12	19	24	232
COLORADO	6,324	343	463	788	1,329	40	234	216	893	770	187	6	60	58	935
COMAL	38,803	380	3,663	2,664	10,664	381	1,211	2,699	4,866	5,724	1,192	11	172	177	4,998
COMANCHE	3,663	591	154	158	773	94	163	128	258	198	75	4	49	28	990
CONCHO	856	46	---	---	94	---	31	---	79	74	11	268	30	22	200
COOKE	14,449	1,469	731	2,715	2,870	111	484	578	768	1,259	463	6	73	464	2,458
CORYELL	14,928	44	704	362	2,006	112	771	1,701	1,293	1,374	520	2,990	185	---	2,866
COTTLE	431	25	4	---	72	---	37	21	58	23	10	34	15	33	100
CRANE	1,482	496	32	---	198	---	21	67	130	113	21	28	6	23	347
CROCKETT	1,449	276	24	---	251	9	53	73	32	182	70	27	4	41	407
CROSBY	1,634	477	7	39	307	---	49	12	134	52	35	8	21	29	463
CULBERSON	1,214	158	33	25	306	---	---	18	---	214	21	72	91	31	244
DALLAM	3,531	683	217	373	817	63	131	111	72	371	119	308	18	---	248
DALLAS	1,409,777	8,279	68,133	118,874	286,093	45,434	136,812	251,091	161,743	125,686	37,937	762	27,183	19,206	122,545
DAWSON	4,707	1,021	145	89	775	33	127	76	317	310	108	612	116	---	979
DEAF SMITH	7,191	1,189	323	1,274	1,568	92	251	143	294	457	202	7	40	67	1,284
DELTA	1,355	48	13	---	113	---	32	20	729	18	13	8	24	29	307
DENTON	167,518	884	8,295	10,725	35,409	2,987	9,252	19,355	21,235	21,021	4,570	109	1,755	8,503	23,419
DEWITT	6,336	153	242	898	940	21	430	192	587	433	174	1	42	483	1,741
DICKENS	499	63	---	0	80	---	14	9	25	34	20	60	15	23	157
DIMMIT	2,938	525	152	27	453	---	88	78	233	234	28	8	268	49	796
DONLEY	1,005	81	15	41	137	5	32	16	110	104	21	1	17	27	398
DUVAL	2,910	579	267	0	342	---	51	23	184	80	40	2	163	181	998
EASTLAND	6,469	423	510	599	1,133	50	251	262	979	436	212	4	58	96	1,455
ECTOR	57,245	5,967	4,905	3,786	12,704	606	2,475	3,316	5,231	5,805	2,431	29	175	1,552	8,263
EDWARDS	447	44	12	0	73	37	---	14	20	15	4	12	25	36	155
EL PASO	268,430	939	15,629	16,935	54,698	4,893	11,669	30,375	33,058	26,551	6,344	160	11,903	9,318	45,956
ELLIS	37,724	156	2,026	8,161	8,971	336	1,122	1,986	3,503	3,361	945	39	230	183	6,704
ERATH	15,077	1,163	829	1,501	2,749	98	463	601	1,628	1,949	530	8	77	2,055	1,426
FALLS	3,212	177	83	108	549	9	114	55	530	140	70	1	44	515	818
FANNIN	6,849	133	200	553	1,198	45	282	171	1,001	489	164	0	599	561	1,453

(A) - Natural Resources and Mining

(D) - Trade, Transportation Utilities

(G) - Professional Business Services

(J) - Other Services

(B) - Construction

(E) - Information

(H) - Education Health Services

(L) - Unclassified

(C) - Manufacturing

(F) - Financial Activities

(I) - Leisure Hospitality

**Table 2. County Employment by Industry**  
**Fourth Quarter 2009**

County	Total Employment	(A)	(B)	(C)	(D)	(E)	(F)	(G)	(H)	(I)	(J)	(L)	Fed	State	Local
FAYETTE	8,339	683	347	882	1,714	123	526	211	1,063	918	181	0	78	90	1,522
FISHER	895	110	17	---	139	---	48	31	75	22	17	83	26	19	308
FLOYD	1,998	569	49	62	365	---	74	35	163	71	23	9	35	22	522
FOARD	352	25	---	---	60	0	---	---	79	---	11	78	9	---	91
FORT BEND	128,778	2,134	10,370	12,516	26,569	1,422	5,279	13,404	15,233	13,630	4,114	55	1,275	3,209	19,568
FRANKLIN	2,992	71	66	---	1,229	---	79	94	642	188	134	68	19	33	368
FREESTONE	5,565	576	383	182	1,093	59	181	321	535	550	151	0	38	439	1,059
FRIO	4,581	553	73	36	691	26	113	642	732	310	46	0	29	382	948
GAINES	5,173	1,805	271	60	883	47	153	49	104	256	91	15	32	30	1,377
GALVESTON	92,858	512	6,301	6,881	16,583	705	5,549	5,292	8,329	13,590	2,559	39	932	11,161	14,423
GARZA	1,726	260	155	26	219	---	40	---	---	132	35	460	15	26	358
GILLESPIE	9,209	75	819	774	2,117	104	371	477	1,633	1,407	255	9	61	86	1,022
GLASSCOCK	404	213	23	0	29	0	0	---	---	---	---	20	8	17	93
GOLIAD	1,439	103	46	---	339	---	35	53	162	141	38	27	20	40	436
GONZALES	6,407	1,105	104	1,069	1,290	44	206	186	454	289	137	1	74	65	1,381
GRAY	8,041	994	390	1,082	1,581	74	272	347	817	570	293	0	56	459	1,105
GRAYSON	41,898	207	2,210	4,557	9,004	499	2,565	2,185	8,676	4,573	853	18	345	228	5,978
GREGG	71,368	3,724	4,728	9,362	15,251	1,067	2,946	6,912	11,131	6,507	1,920	11	351	392	7,066
GRIMES	7,192	238	366	1,608	1,332	25	268	256	433	497	118	728	45	---	1,276
GUADALUPE	28,761	285	2,317	4,938	5,228	188	978	1,866	2,930	2,929	950	8	203	172	5,769
HALE	14,709	1,301	369	2,785	3,420	84	568	443	1,632	924	557	19	119	548	1,940
HALL	975	161	13	42	145	---	45	24	124	42	43	16	26	21	272
HAMILTON	2,682	245	347	160	511	26	68	50	290	224	68	1	32	33	627
HANSFORD	1,960	537	97	55	340	---	105	58	59	82	44	3	16	20	544
HARDEMAN	1,222	56	---	---	190	12	61	5	69	82	47	193	19	31	457
HARDIN	12,255	401	951	710	2,549	77	246	250	2,878	1,153	353	5	77	86	2,517
HARRIS	1,982,221	80,010	136,424	166,997	416,203	30,187	114,151	311,513	229,704	175,109	58,735	618	24,733	46,296	191,540
HARRISON	22,166	1,971	1,284	3,547	3,848	127	1,236	1,407	2,487	1,657	843	2	146	330	3,281
HARTLEY	1,614	413	58	14	305	---	24	38	68	14	18	5	10	41	605
HASKELL	2,028	258	---	16	355	21	65	179	174	101	117	273	34	39	395
HAYS	48,636	270	2,630	3,816	12,076	579	1,607	3,050	4,988	6,213	1,698	4,507	192	---	7,008
HEMPHILL	1,861	322	242	29	471	22	109	44	77	110	41	0	11	27	356
HENDERSON	15,499	284	635	1,701	3,196	144	627	924	2,268	1,818	402	13	97	225	3,166
HIDALGO	219,830	5,662	7,098	6,306	45,822	2,108	7,743	13,624	54,173	18,671	3,873	57	3,339	6,266	45,087
HILL	9,349	265	831	825	2,269	45	299	301	1,000	816	181	4	100	143	2,269
HOCKLEY	8,967	1,851	364	266	1,591	41	259	195	696	466	---	1,071	53	77	2,037
HOOD	12,610	849	911	450	2,693	194	704	815	1,506	1,698	627	8	102	64	1,991

(A) - Natural Resources and Mining	(D) - Trade, Transportation Utilities	(G) - Professional Business Services	(J) - Other Services
(B) - Construction	(E) - Information	(H) - Education Health Services	(L) - Unclassified
(C) - Manufacturing	(F) - Financial Activities	(I) - Leisure Hospitality	

**Table 2. County Employment by Industry**  
**Fourth Quarter 2009**

County	Total Employment	(A)	(B)	(C)	(D)	(E)	(F)	(G)	(H)	(I)	(J)	(L)	Fed	State	Local
HOPKINS	11,690	470	844	1,305	3,249	131	476	738	906	853	253	6	79	137	2,244
HOUSTON	6,208	141	249	497	1,138	84	217	311	841	296	178	13	93	1,084	1,065
HOWARD	12,235	861	592	806	1,861	67	434	500	1,890	1,055	311	772	939	---	2,147
HUDSPETH	1,152	170	6	---	74	---	10	---	---	17	9	166	366	40	296
HUNT	28,357	55	760	7,650	4,914	165	828	1,168	2,996	2,157	486	10	242	2,336	4,589
HUTCHINSON	8,245	902	1,504	1,098	1,268	28	210	198	504	668	184	10	72	65	1,536
IRION	561	242	38	17	59	---	---	---	11	13	21	33	4	12	111
JACK	2,653	697	344	38	362	---	156	102	169	147	23	6	18	53	537
JACKSON	4,899	226	652	---	705	110	130	156	165	254	101	1,270	34	40	1,056
JASPER	10,362	303	355	1,479	2,170	60	345	314	1,858	958	217	9	82	306	1,906
JEFF DAVIS	966	---	55	---	55	---	29	21	83	154	14	260	27	144	123
JEFFERSON	118,299	753	13,334	13,780	23,160	1,344	4,398	11,441	17,014	11,259	3,080	20	1,973	4,936	11,808
JIM HOGG	2,004	137	27	48	228	11	84	---	654	74	27	2	278	43	391
JIM WELLS	16,288	2,771	331	347	3,254	68	764	543	4,271	1,319	273	2	89	138	2,119
JOHNSON	37,951	1,319	2,994	4,635	9,046	462	1,294	1,829	4,564	3,380	949	27	246	241	6,964
JONES	4,003	321	185	539	643	22	161	127	348	160	58	10	87	87	1,255
KARNES	3,741	127	72	227	655	---	110	216	303	230	58	784	36	---	923
KAUFMAN	26,112	85	2,163	3,427	5,686	119	915	1,560	2,496	2,501	627	1,129	196	---	5,207
KENDALL	10,834	83	968	856	2,258	131	632	867	1,358	1,257	498	6	60	67	1,795
KENEDY	416	225	---	0	---	0	0	10	---	11	60	103	2	4	---
KENT	306	15	0	0	30	0	---	---	27	---	---	17	9	21	187
KERR	17,289	120	970	785	3,232	260	836	1,215	3,630	2,078	751	3	564	768	2,077
KIMBLE	1,437	24	139	97	345	---	47	36	146	281	33	4	17	48	222
KING	194	---	---	0	4	0	0	---	0	---	0	119	3	10	58
KINNEY	771	33	---	---	129	---	---	---	14	80	12	63	161	27	252
KLEBERG	12,594	679	324	212	1,635	91	437	553	2,305	1,243	316	0	914	2,148	1,737
KNOX	1,280	261	78	---	256	---	51	8	107	42	31	23	31	28	363
LA SALLE	1,682	419	17	0	132	---	32	---	80	114	37	159	128	163	400
LAMAR	19,416	84	1,181	4,039	3,202	166	886	1,200	3,253	1,642	426	3	158	274	2,902
LAMB	4,581	1,071	116	---	834	---	181	136	338	173	71	634	39	43	944
LAMPASAS	4,742	48	669	638	879	33	176	175	479	383	164	3	49	89	958
LAVACA	5,846	182	244	1,310	1,444	35	234	70	859	276	194	0	56	63	880
LEE	5,081	415	741	407	1,040	24	265	154	257	334	107	489	31	---	816
LEON	5,313	646	943	437	1,061	16	210	155	106	619	153	2	48	53	865
LIBERTY	16,476	712	765	1,480	3,826	102	610	664	2,031	1,291	313	4	122	1,091	3,463
LIMESTONE	8,408	292	163	615	1,183	40	306	---	1,094	444	160	2,633	53	---	1,425
LIPSCOMB	1,182	167	24	---	170	---	23	4	9	17	16	295	22	16	418

(A) - Natural Resources and Mining

(D) - Trade, Transportation Utilities

(G) - Professional Business Services

(J) - Other Services

(B) - Construction

(E) - Information

(H) - Education Health Services

(L) - Unclassified

(C) - Manufacturing

(F) - Financial Activities

(I) - Leisure Hospitality

**Table 2. County Employment by Industry**  
**Fourth Quarter 2009**

County	Total Employment	(A)	(B)	(C)	(D)	(E)	(F)	(G)	(H)	(I)	(J)	(L)	Fed	State	Local
LIVE OAK	2,860	262	100	---	553	---	127	45	178	311	76	309	295	36	566
LLANO	4,237	34	297	114	776	28	231	229	250	999	106	2	28	43	1,100
LOVING	58	---	0	---	---	0	---	---	0	---	0	57	1	---	---
LUBBOCK	124,098	1,446	5,594	4,806	25,367	4,483	6,752	9,616	19,490	15,814	4,133	24	1,535	10,842	14,196
LYNN	1,587	496	8	---	220	54	55	16	25	49	52	47	31	21	513
MADISON	3,989	---	172	67	729	15	117	108	323	374	105	1,389	24	---	566
MARION	1,873	35	7	217	380	---	41	43	446	204	27	3	36	42	392
MARTIN	1,357	269	122	---	272	---	32	12	135	40	27	54	17	25	351
MASON	1,089	77	27	12	203	---	59	105	141	113	29	13	20	26	263
MATAGORDA	11,133	700	323	476	3,204	76	395	968	940	1,035	392	2	91	99	2,432
MAVERICK	16,270	257	198	531	3,337	89	494	363	4,111	988	121	1	920	174	4,687
MCCULLOCH	2,840	65	57	400	780	30	106	115	245	209	59	0	31	43	699
MCLENNAN	100,043	302	6,027	14,171	17,369	1,440	6,176	8,577	16,252	9,643	2,934	29	3,009	2,553	11,560
MCMULLEN	235	49	0	0	---	---	7	---	---	---	---	44	5	33	96
MEDINA	8,035	302	416	230	1,524	71	396	402	630	820	218	1	56	567	2,402
MENARD	488	34	25	0	93	---	32	20	25	35	---	7	8	9	200
MIDLAND	64,558	11,264	3,317	2,426	12,127	1,144	3,529	6,552	6,124	6,944	2,151	23	619	533	7,805
MILAM	5,583	226	542	434	1,099	55	238	303	853	376	168	9	60	57	1,165
MILLS	1,437	100	28	65	278	---	59	41	266	47	40	85	20	28	380
MITCHELL	2,421	227	79	43	341	13	45	67	155	104	21	601	24	---	703
MONTAGUE	4,808	363	225	273	1,084	22	239	161	375	456	119	2	58	54	1,377
MONTGOMERY	126,337	3,171	8,726	8,462	26,815	899	5,662	14,417	13,375	15,949	4,874	73	826	441	22,648
MOORE	10,084	640	530	---	1,574	52	182	299	259	622	232	4,029	70	56	1,539
MORRIS	3,888	70	54	1,451	669	35	137	102	369	169	95	2	23	43	669
MOTLEY	386	59	24	21	63	0	---	---	53	29	11	8	15	19	83
NACOGDOCHES	22,901	527	1,036	3,111	3,632	130	779	2,050	2,921	2,742	462	1,864	162	---	3,487
NAVARRO	16,047	343	560	2,995	3,310	68	562	836	2,132	1,018	319	11	114	418	3,361
NEWTON	1,917	113	62	169	216	---	---	213	355	44	10	8	28	34	666
NOLAN	6,114	318	184	825	1,289	43	177	284	316	638	203	366	46	---	1,424
NUECES	151,447	3,636	11,973	7,970	27,277	2,060	6,520	13,995	27,076	16,993	4,590	56	6,437	5,484	17,378
OCHILTREE	4,222	1,358	283	44	872	39	143	97	173	280	130	2	28	29	744
OLDHAM	729	100	---	10	58	---	---	---	---	49	7	299	11	24	172
ORANGE	21,704	298	1,317	4,447	4,508	127	894	912	1,734	2,227	540	7	106	395	4,191
PALO PINTO	7,975	645	332	1,220	1,687	40	270	291	546	863	209	3	44	133	1,693
PANOLA	8,168	1,076	1,330	851	1,559	53	218	426	703	402	167	2	77	58	1,244
PARKER	25,665	923	1,714	2,086	5,696	277	797	1,725	3,414	2,914	756	13	188	168	4,993
PARMER	5,132	994	92	---	479	30	77	210	117	40	84	2,075	63	23	847

(A) - Natural Resources and Mining

(D) - Trade, Transportation Utilities

(G) - Professional Business Services

(J) - Other Services

(B) - Construction

(E) - Information

(H) - Education Health Services

(L) - Unclassified

(C) - Manufacturing

(F) - Financial Activities

(I) - Leisure Hospitality

## Table 2. County Employment by Industry

Fourth Quarter 2009

County	Total Employment	(A)	(B)	(C)	(D)	(E)	(F)	(G)	(H)	(I)	(J)	(L)	Fed	State	Local
PECOS	5,694	1,369	176	29	956	35	215	155	205	513	80	0	62	595	1,304
POLK	10,713	273	419	---	2,107	181	395	576	1,129	972	269	1,136	80	931	2,245
POTTER	75,399	1,037	3,467	8,001	14,584	1,053	4,541	6,007	12,119	7,775	2,306	10	1,956	2,907	9,634
PRESIDIO	2,270	---	57	---	279	---	57	60	89	226	19	459	374	82	566
RAINS	1,624	24	143	59	395	---	56	77	130	173	62	23	22	31	429
RANDALL	28,595	291	1,881	1,335	7,218	516	2,208	2,174	2,756	3,392	1,064	7	80	2,469	3,205
REAGAN	1,670	394	44	0	696	---	22	18	11	49	45	12	17	17	344
REAL	714	16	33	15	87	0	19	20	147	101	4	5	6	25	237
RED RIVER	2,721	82	119	394	302	12	99	19	710	95	29	0	42	53	765
REEVES	3,832	409	42	---	673	26	160	59	294	361	66	108	85	82	1,466
REFUGIO	2,183	296	155	---	272	---	169	27	189	235	104	11	53	29	643
ROBERTS	260	72	---	0	48	---	---	---	0	---	---	37	7	2	94
ROBERTSON	3,695	259	160	354	776	7	129	88	384	381	56	6	49	50	997
ROCKWALL	20,378	37	1,150	1,096	4,325	185	772	1,934	3,354	2,983	724	15	102	60	3,642
RUNNELS	2,892	201	117	648	458	---	106	64	268	111	47	6	40	43	782
RUSK	13,924	1,644	1,529	1,129	2,513	126	547	979	1,615	873	292	18	85	198	2,376
SABINE	2,050	141	140	---	300	---	76	61	214	91	45	435	54	28	466
SAN AUGUSTINE	1,615	47	93	81	369	7	51	17	451	39	28	2	21	35	373
SAN JACINTO	2,117	21	101	58	349	4	79	136	150	137	42	0	24	49	969
SAN PATRICIO	17,431	744	3,166	1,540	2,455	149	495	1,074	1,297	1,889	307	5	197	169	3,945
SAN SABA	1,728	177	35	51	370	---	42	41	177	227	83	6	23	162	333
SCHLEICHER	757	118	90	---	143	---	21	10	57	---	10	32	11	6	258
SCURRY	6,164	1,165	364	123	1,150	67	290	249	312	518	250	8	38	391	1,239
SHACKELFORD	1,108	325	23	23	163	17	56	32	138	71	16	0	16	22	206
SHELBY	8,178	668	439	2,394	1,548	36	336	175	660	350	134	3	81	48	1,305
SHERMAN	853	232	15	---	118	---	31	38	34	---	18	37	11	23	294
SMITH	91,663	2,049	3,956	6,609	18,617	2,220	3,999	8,271	19,480	9,727	3,164	14	912	3,039	9,607
SOMERVELL	3,942	164	139	70	1,222	---	94	481	429	472	119	10	14	31	698
STARR	13,939	215	130	75	1,814	46	262	130	4,735	651	327	7	596	170	4,779
STEPHENS	3,117	369	278	409	511	---	163	88	273	151	66	7	21	195	588
STERLING	550	192	14	---	61	0	---	---	---	---	26	83	3	18	152
STONEWALL	523	72	61	---	57	0	14	4	23	21	29	2	13	20	207
SUTTON	2,489	795	132	---	653	8	80	32	41	172	51	68	7	43	407
SWISHER	2,140	437	34	111	389	---	61	40	83	144	39	24	32	157	589
TARRANT	748,711	7,161	37,087	78,005	176,964	14,198	46,756	87,275	88,762	80,908	22,248	217	14,221	11,060	83,848
TAYLOR	57,419	1,343	2,688	2,270	10,886	1,102	3,292	4,453	11,951	6,443	1,733	9	1,258	3,326	6,665
TERRELL	316	30	0	0	16	0	10	6	---	21	4	24	70	25	110

(A) - Natural Resources and Mining

(D) - Trade, Transportation Utilities

(G) - Professional Business Services

(J) - Other Services

(B) - Construction

(E) - Information

(H) - Education Health Services

(L) - Unclassified

(C) - Manufacturing

(F) - Financial Activities

(I) - Leisure Hospitality

**Table 2. County Employment by Industry**  
**Fourth Quarter 2009**

County	Total Employment	(A)	(B)	(C)	(D)	(E)	(F)	(G)	(H)	(I)	(J)	(L)	Fed	State	Local
TERRY	4,022	977	70	173	714	29	114	231	206	257	84	11	32	204	921
THROCKMORTON	507	86	8	---	63	---	14	8	---	26	---	72	13	---	216
TITUS	16,355	446	392	6,290	2,445	123	442	443	1,185	1,156	224	5	115	152	2,940
TOM GREEN	43,946	1,101	1,981	3,348	8,083	1,256	2,072	3,272	7,773	4,560	1,369	15	1,360	2,312	5,443
TRAVIS	559,396	1,597	25,646	36,185	87,140	17,516	33,550	87,251	60,828	60,208	19,959	332	8,883	67,993	52,310
TRINITY	2,293	53	82	161	373	---	46	67	372	378	73	6	26	35	622
TYLER	3,953	331	66	145	735	26	124	44	385	224	53	633	50	---	1,136
UPSHUR	6,447	202	460	242	1,090	330	240	352	940	609	77	0	63	84	1,758
UPTON	1,418	522	87	---	227	---	13	---	38	50	---	18	6	25	432
UVALDE	9,176	664	277	390	2,196	128	291	332	988	826	256	0	259	268	2,301
VAL VERDE	16,983	110	388	---	3,464	147	690	908	2,848	1,359	206	1,754	2,218	224	2,666
VAN ZANDT	10,202	815	904	470	1,927	78	377	494	1,310	1,004	257	2	94	111	2,358
VICTORIA	36,204	1,870	2,186	2,696	7,975	470	1,695	2,164	6,163	3,198	1,124	7	249	259	6,149
WALKER	23,521	250	518	852	2,972	155	604	899	2,112	1,755	440	2	149	10,687	2,125
WALLER	13,451	216	808	2,784	2,278	36	289	553	979	1,046	147	4	56	2,383	1,871
WARD	3,438	847	164	150	611	35	144	183	134	209	54	0	19	106	782
WASHINGTON	14,409	307	631	2,507	3,006	140	810	466	1,838	1,260	294	1,107	80	---	1,963
WEBB	86,043	1,385	2,204	1,094	25,879	595	3,867	5,343	13,442	7,972	1,290	44	3,179	2,374	17,373
WHARTON	14,596	2,109	556	1,451	3,127	100	666	491	1,503	1,045	339	15	94	111	2,989
WHEELER	2,107	328	126	19	419	---	65	78	179	277	28	12	27	21	528
WICHITA	52,650	1,329	2,046	5,104	10,253	1,160	2,514	2,718	8,451	5,765	1,858	16	2,158	2,898	6,380
WILBARGER	6,983	310	91	1,070	960	129	194	108	289	417	155	2,085	45	---	1,129
WILLACY	3,640	334	---	59	527	---	98	238	326	291	108	400	33	97	1,130
WILLIAMSON	119,039	816	8,670	5,539	30,111	1,206	7,353	14,196	10,670	13,734	4,851	43	1,537	880	19,432
WILSON	6,505	91	523	316	1,190	59	173	276	951	552	121	2	65	56	2,131
WINKLER	2,201	611	228	---	381	---	142	11	50	87	45	16	9	26	592
WISE	17,585	1,917	915	1,318	4,339	116	503	821	2,166	1,453	394	6	113	113	3,410
WOOD	9,235	397	397	943	1,882	151	465	312	1,450	996	248	1	91	281	1,623
YOAKUM	3,269	1,081	251	108	557	8	92	81	32	138	56	4	18	25	820
YOUNG	6,631	847	256	969	1,143	136	322	183	666	499	142	2	57	72	1,338
ZAPATA	3,358	626	264	34	357	19	105	80	319	223	34	0	175	38	1,086
ZAVALA	2,904	163	68	---	199	---	40	---	657	109	81	652	11	44	880

When there was no employment reported in a county in one of the industry groups, a "0" is shown. When one employer comprises 80% or more of the employment for an industry group in a county, or there are fewer than three employers for an industry group in a county, a dash (---) is shown. The employment for that industry is included in (L) - Unclassified so as not to reveal information about individual establishments.

(A) - Natural Resources and Mining	(D) - Trade, Transportation Utilities	(G) - Professional Business Services	(J) - Other Services
(B) - Construction	(E) - Information	(H) - Education Health Services	(L) - Unclassified
(C) - Manufacturing	(F) - Financial Activities	(I) - Leisure Hospitality	



**Table 3. Covered Employment and Wages for All Industries**  
**Fourth Quarter 2009**

County	Total (Including Federal)			Total (Excluding Federal)		
	Employment	Wages	AWW*	Employment	Wages	AWW*
ANDERSON	17,385	\$165,920,663	\$734.16	17,241	\$164,069,671	\$732.02
ANDREWS	5,099	\$64,397,474	\$971.49	5,082	\$64,127,717	\$970.73
ANGELINA	34,903	\$325,495,347	\$717.37	34,503	\$319,121,030	\$711.46
ARANSAS	5,441	\$41,978,282	\$593.48	5,418	\$41,636,397	\$591.10
ARCHER	1,951	\$16,000,272	\$630.74	1,929	\$15,748,805	\$628.02
ARMSTRONG	392	\$3,135,128	\$615.74	385	\$3,073,220	\$614.03
ATASCOSA	9,330	\$82,529,821	\$680.43	9,275	\$81,856,861	\$678.86
AUSTIN	12,000	\$135,346,304	\$867.63	11,900	\$133,824,319	\$865.08
BAILEY	2,727	\$21,849,608	\$616.41	2,696	\$21,483,502	\$612.97
BANDERA	2,943	\$20,723,090	\$541.65	2,927	\$20,523,587	\$539.43
BASTROP	14,274	\$122,208,954	\$658.59	13,872	\$115,881,781	\$642.60
BAYLOR	1,223	\$8,798,249	\$553.38	1,202	\$8,539,962	\$546.37
BEE	8,472	\$69,346,110	\$629.64	8,421	\$68,837,509	\$628.81
BELL	104,694	\$1,028,727,013	\$755.85	93,805	\$868,766,158	\$712.41
BEXAR	717,384	\$7,860,522,706	\$842.86	684,876	\$7,318,056,446	\$821.94
BLANCO	2,673	\$26,192,384	\$753.76	2,606	\$25,330,075	\$747.78
BORDEN	163	\$1,184,774	\$560.27	160	\$1,166,130	\$561.81
BOSQUE	3,646	\$29,156,688	\$615.09	3,572	\$28,182,661	\$606.97
BOWIE	42,996	\$421,846,841	\$754.72	37,791	\$334,836,321	\$681.56
BRAZORIA	83,583	\$918,284,648	\$845.11	83,090	\$911,110,614	\$843.49
BRAZOS	87,504	\$789,102,298	\$693.69	86,604	\$774,938,787	\$688.31
BREWSTER	4,872	\$37,650,351	\$594.49	4,550	\$32,302,845	\$546.12
BRISCOE	422	\$2,664,993	\$486.16	407	\$2,546,523	\$481.29
BROOKS	2,422	\$21,487,716	\$682.45	2,141	\$15,741,592	\$565.48
BROWN	15,158	\$125,102,032	\$634.88	15,018	\$123,201,978	\$631.03
BURLESON	3,564	\$33,902,291	\$731.79	3,512	\$33,277,904	\$728.88
BURNET	11,875	\$109,324,351	\$708.19	11,792	\$108,068,577	\$704.95
CALDWELL	6,729	\$52,149,553	\$596.18	6,675	\$51,394,250	\$592.24
CALHOUN	9,727	\$124,729,177	\$986.38	9,688	\$124,282,925	\$986.81
CALLAHAN	2,103	\$17,769,386	\$650.07	2,055	\$17,087,322	\$639.72
CAMERON	123,563	\$959,857,856	\$597.55	120,758	\$902,661,706	\$575.00
CAMP	4,211	\$37,713,779	\$688.87	4,179	\$37,288,015	\$686.42
CARSON	4,796	\$86,977,208	\$1,395.03	4,547	\$81,307,775	\$1,375.41
CASS	7,558	\$65,245,666	\$664.02	7,495	\$64,513,698	\$662.12
CASTRO	2,596	\$19,838,417	\$587.84	2,571	\$19,559,587	\$585.21
CHAMBERS	9,541	\$116,819,535	\$941.84	9,481	\$115,941,751	\$940.65
CHEROKEE	14,665	\$116,789,282	\$612.60	14,587	\$115,962,296	\$611.52
CHILDRESS	2,556	\$18,382,246	\$553.22	2,523	\$17,995,418	\$548.66
CLAY	1,582	\$12,304,975	\$598.19	1,555	\$11,965,479	\$591.91
COCHRAN	868	\$7,022,812	\$622.37	852	\$6,838,389	\$617.65
COKE	728	\$4,783,452	\$505.21	711	\$4,631,119	\$500.81
COLEMAN	2,239	\$15,573,861	\$534.98	2,196	\$15,145,615	\$530.45
COLLIN	282,818	\$4,072,175,908	\$1,107.58	281,414	\$4,048,961,312	\$1,106.76
COLLINGSWORTH	906	\$6,867,556	\$583.30	886	\$6,661,503	\$578.14
COLORADO	6,324	\$53,602,757	\$651.97	6,264	\$52,900,026	\$649.59
COMAL	38,803	\$363,344,191	\$720.29	38,631	\$360,643,909	\$718.12
COMANCHE	3,663	\$27,492,969	\$577.30	3,615	\$26,901,811	\$572.49

\*AWW = Average Weekly Wage

**Table 3. Covered Employment and Wages for All Industries**  
**Fourth Quarter 2009**

County	Total (Including Federal)			Total (Excluding Federal)		
	Employment	Wages	AWW*	Employment	Wages	AWW*
CONCHO	856	\$6,918,399	\$621.95	825	\$6,495,539	\$605.40
COOKE	14,449	\$138,890,481	\$739.44	14,376	\$137,977,078	\$738.29
CORYELL	14,928	\$128,281,411	\$661.03	14,743	\$126,035,554	\$657.60
COTTLE	431	\$3,795,507	\$676.88	416	\$3,626,891	\$670.65
CRANE	1,482	\$18,487,442	\$959.59	1,476	\$18,413,098	\$959.40
CROCKETT	1,449	\$10,694,736	\$567.75	1,445	\$10,639,945	\$566.28
CROSBY	1,634	\$17,659,792	\$831.53	1,613	\$17,415,767	\$830.72
CULBERSON	1,214	\$9,826,814	\$622.66	1,123	\$8,426,290	\$577.18
DALLAM	3,531	\$34,970,445	\$761.76	3,513	\$34,719,668	\$760.25
DALLAS	1,409,777	\$20,659,107,874	\$1,127.24	1,382,594	\$20,137,824,638	\$1,120.40
DAWSON	4,707	\$35,923,356	\$587.03	4,592	\$35,040,484	\$587.02
DEAF SMITH	7,191	\$61,351,097	\$656.25	7,151	\$60,759,417	\$653.56
DELTA	1,355	\$8,090,931	\$459.32	1,331	\$7,879,359	\$455.26
DENTON	167,518	\$1,799,849,877	\$826.48	165,763	\$1,771,291,952	\$821.98
DEWITT	6,336	\$51,229,208	\$621.96	6,294	\$50,785,246	\$620.71
DICKENS	499	\$3,901,906	\$601.09	485	\$3,718,808	\$590.22
DIMITT	2,938	\$26,426,356	\$691.82	2,671	\$20,827,915	\$599.91
DONLEY	1,005	\$6,511,769	\$498.41	988	\$6,304,053	\$490.65
DUVAL	2,910	\$25,798,510	\$682.04	2,747	\$22,484,015	\$629.61
EASTLAND	6,469	\$49,124,142	\$584.17	6,411	\$48,437,701	\$581.22
ECTOR	57,245	\$655,802,682	\$881.24	57,070	\$653,142,300	\$880.35
EDWARDS	447	\$3,373,655	\$580.13	422	\$2,922,539	\$532.73
EL PASO	268,430	\$2,388,103,063	\$684.35	256,526	\$2,183,589,007	\$654.78
ELLIS	37,724	\$349,946,979	\$713.58	37,494	\$346,817,688	\$711.53
ERATH	15,077	\$110,536,547	\$563.96	15,000	\$109,493,813	\$561.49
FALLS	3,212	\$24,960,776	\$597.72	3,168	\$24,448,559	\$593.64
FANNIN	6,849	\$59,024,574	\$662.95	6,250	\$49,354,327	\$607.47
FAYETTE	8,339	\$78,684,864	\$725.86	8,261	\$77,864,752	\$725.04
FISHER	895	\$7,338,395	\$630.72	869	\$7,082,915	\$626.73
FLOYD	1,998	\$15,871,189	\$610.94	1,963	\$15,470,624	\$606.14
FOARD	352	\$2,108,058	\$460.24	343	\$2,004,799	\$449.61
FORT BEND	128,778	\$1,596,473,600	\$953.62	127,503	\$1,572,463,436	\$948.67
FRANKLIN	2,992	\$24,718,103	\$635.49	2,973	\$24,494,005	\$633.76
FREESTONE	5,565	\$52,752,021	\$729.13	5,528	\$52,367,352	\$728.74
FRIO	4,581	\$34,411,810	\$577.88	4,552	\$34,134,477	\$576.87
GAINES	5,173	\$49,199,206	\$731.55	5,141	\$48,781,569	\$729.86
GALVESTON	92,858	\$1,058,384,901	\$876.76	91,926	\$1,040,522,520	\$870.71
GARZA	1,726	\$15,597,142	\$695.12	1,711	\$15,407,839	\$692.71
GILLESPIE	9,209	\$73,879,858	\$617.12	9,148	\$73,162,608	\$615.23
GLASSCOCK	404	\$3,480,260	\$663.20	396	\$3,396,308	\$660.29
GOLIAD	1,439	\$10,730,132	\$573.59	1,419	\$10,505,854	\$569.38
GONZALES	6,407	\$54,510,536	\$654.49	6,332	\$53,548,225	\$650.49
GRAY	8,041	\$88,239,088	\$844.16	7,985	\$87,411,449	\$842.11
GRAYSON	41,898	\$404,568,526	\$742.77	41,553	\$399,576,921	\$739.70
GREGG	71,368	\$761,042,577	\$820.28	71,017	\$755,519,903	\$818.35
GRIMES	7,192	\$72,098,922	\$771.11	7,147	\$71,533,475	\$769.91
GUADALUPE	28,761	\$269,849,430	\$721.73	28,558	\$266,962,528	\$719.07

\*AWW = Average Weekly Wage

**Table 3. Covered Employment and Wages for All Industries**  
**Fourth Quarter 2009**

County	Total (Including Federal)			Total (Excluding Federal)		
	Employment	Wages	AWW*	Employment	Wages	AWW*
HALE	14,709	\$119,545,976	\$625.17	14,590	\$117,735,359	\$620.72
HALL	975	\$6,195,484	\$488.96	948	\$5,918,703	\$480.09
HAMILTON	2,682	\$21,731,923	\$623.22	2,650	\$21,403,806	\$621.22
HANSFORD	1,960	\$19,588,215	\$768.64	1,944	\$19,369,488	\$766.44
HARDEMAN	1,222	\$9,443,965	\$594.32	1,203	\$9,250,127	\$591.48
HARDIN	12,255	\$105,708,663	\$663.54	12,178	\$104,726,539	\$661.53
HARRIS	1,982,221	\$30,846,297,244	\$1,197.04	1,957,488	\$30,318,156,677	\$1,191.41
HARRISON	22,166	\$229,652,195	\$796.98	22,019	\$227,737,813	\$795.59
HARTLEY	1,614	\$13,558,660	\$646.34	1,603	\$13,446,013	\$645.10
HASKELL	2,028	\$15,306,264	\$580.57	1,994	\$14,924,651	\$575.66
HAYS	48,636	\$405,319,008	\$641.05	48,444	\$402,817,351	\$639.62
HEMPHILL	1,861	\$21,087,840	\$871.81	1,850	\$20,964,462	\$871.70
HENDERSON	15,499	\$123,748,335	\$614.18	15,402	\$122,601,420	\$612.33
HIDALGO	219,830	\$1,705,890,197	\$596.93	216,491	\$1,642,612,913	\$583.65
HILL	9,349	\$68,795,705	\$566.05	9,249	\$67,649,088	\$562.65
HOCKLEY	8,967	\$81,139,688	\$696.05	8,914	\$80,467,058	\$694.39
HOOD	12,610	\$109,781,831	\$669.67	12,509	\$108,458,412	\$666.97
HOPKINS	11,690	\$100,730,267	\$662.81	11,612	\$99,748,178	\$660.80
HOUSTON	6,208	\$58,809,599	\$728.75	6,114	\$57,690,870	\$725.80
HOWARD	12,235	\$119,181,746	\$749.31	11,296	\$102,968,989	\$701.22
HUDSPETH	1,152	\$12,805,107	\$854.79	787	\$5,342,688	\$522.43
HUNT	28,357	\$300,158,647	\$814.24	28,115	\$296,317,525	\$810.73
HUTCHINSON	8,245	\$98,874,166	\$922.46	8,173	\$97,866,495	\$921.11
IRION	561	\$6,266,768	\$859.29	557	\$6,223,506	\$860.00
JACK	2,653	\$27,667,885	\$802.12	2,635	\$27,484,170	\$802.24
JACKSON	4,899	\$42,629,862	\$669.32	4,865	\$42,243,013	\$667.93
JASPER	10,362	\$88,925,433	\$660.17	10,280	\$87,686,925	\$656.16
JEFF DAVIS	966	\$7,574,406	\$603.36	939	\$7,261,436	\$594.86
JEFFERSON	118,299	\$1,424,824,601	\$926.48	116,326	\$1,391,048,515	\$919.86
JIM HOGG	2,004	\$16,396,544	\$629.27	1,726	\$10,344,555	\$460.94
JIM WELLS	16,288	\$149,350,840	\$705.32	16,199	\$148,090,249	\$703.23
JOHNSON	37,951	\$364,227,108	\$738.26	37,705	\$360,787,836	\$736.06
JONES	4,003	\$32,361,800	\$621.93	3,915	\$30,995,991	\$608.97
KARNES	3,741	\$28,639,841	\$588.84	3,705	\$28,218,995	\$585.88
KAUFMAN	26,112	\$231,111,325	\$680.83	25,916	\$228,804,090	\$679.12
KENDALL	10,834	\$104,130,881	\$739.35	10,774	\$103,289,043	\$737.43
KENEDY	416	\$4,942,147	\$914.59	413	\$4,924,695	\$916.51
KENT	306	\$2,236,101	\$562.12	297	\$2,153,927	\$557.87
KERR	17,289	\$158,453,447	\$704.99	16,725	\$149,206,983	\$686.25
KIMBLE	1,437	\$10,016,620	\$536.07	1,421	\$9,842,879	\$532.95
KING	194	\$2,027,553	\$805.33	191	\$1,994,704	\$804.75
KINNEY	771	\$7,285,663	\$726.89	610	\$3,783,741	\$477.40
KLEBERG	12,594	\$108,888,135	\$665.10	11,680	\$93,323,176	\$614.63
KNOX	1,280	\$11,011,872	\$661.60	1,249	\$10,640,939	\$655.18
LA SALLE	1,682	\$18,261,131	\$835.30	1,554	\$15,455,276	\$765.04
LAMAR	19,416	\$178,141,286	\$705.76	19,259	\$176,150,520	\$703.58
LAMB	4,581	\$36,592,184	\$614.49	4,541	\$36,088,805	\$611.29

\*AWW = Average Weekly Wage

**Table 3. Covered Employment and Wages for All Industries**  
**Fourth Quarter 2009**

County	Total (Including Federal)			Total (Excluding Federal)		
	Employment	Wages	AWW*	Employment	Wages	AWW*
LAMPASAS	4,742	\$36,503,893	\$592.11	4,693	\$35,889,120	\$588.22
LAVACA	5,846	\$46,714,360	\$614.68	5,790	\$46,056,090	\$611.88
LEE	5,081	\$49,784,014	\$753.75	5,049	\$49,435,374	\$753.11
LEON	5,313	\$57,709,064	\$835.58	5,265	\$57,189,628	\$835.56
LIBERTY	16,476	\$144,683,674	\$675.51	16,354	\$143,156,425	\$673.35
LIMESTONE	8,408	\$66,229,235	\$605.92	8,355	\$65,641,109	\$604.37
LIPSCOMB	1,182	\$9,828,504	\$639.81	1,160	\$9,567,740	\$634.65
LIVE OAK	2,860	\$25,645,187	\$689.76	2,565	\$20,697,294	\$620.78
LLANO	4,237	\$33,063,006	\$600.21	4,210	\$32,738,036	\$598.22
LOVING	58	\$636,596	\$849.17	57	\$630,667	\$856.11
LUBBOCK	124,098	\$1,157,754,957	\$717.64	122,564	\$1,134,631,415	\$712.11
LYNN	1,587	\$11,788,871	\$571.54	1,555	\$11,494,086	\$568.47
MADISON	3,989	\$30,020,256	\$578.90	3,965	\$29,762,809	\$577.37
MARION	1,873	\$13,030,446	\$535.25	1,837	\$12,550,023	\$525.52
MARTIN	1,357	\$14,254,759	\$808.05	1,340	\$14,072,056	\$807.61
MASON	1,089	\$7,845,510	\$554.35	1,068	\$7,639,160	\$550.04
MATAGORDA	11,133	\$126,876,885	\$876.63	11,043	\$125,736,813	\$875.88
MAVERICK	16,270	\$118,562,823	\$560.55	15,350	\$98,887,158	\$495.55
MCCULLOCH	2,840	\$21,967,276	\$595.07	2,808	\$21,630,194	\$592.47
MCLENNAN	100,043	\$1,017,477,316	\$782.34	97,034	\$973,652,972	\$771.86
MCMULLEN	235	\$1,769,387	\$579.18	230	\$1,725,596	\$576.29
MEDINA	8,035	\$57,688,937	\$552.31	7,979	\$56,975,576	\$549.28
MENARD	488	\$3,055,110	\$481.90	480	\$2,988,373	\$478.91
MIDLAND	64,558	\$836,480,740	\$996.69	63,939	\$825,906,107	\$993.62
MILAM	5,583	\$55,213,413	\$760.69	5,524	\$54,523,369	\$759.30
MILLS	1,437	\$9,488,652	\$507.81	1,418	\$9,311,313	\$505.24
MITCHELL	2,421	\$19,713,168	\$626.35	2,397	\$19,435,496	\$623.80
MONTAGUE	4,808	\$39,832,289	\$637.32	4,749	\$39,197,213	\$634.86
MONTGOMERY	126,337	\$1,444,989,339	\$879.82	125,511	\$1,432,487,770	\$877.94
MOORE	10,084	\$90,124,532	\$687.47	10,014	\$89,066,754	\$684.17
MORRIS	3,888	\$37,113,467	\$734.22	3,865	\$36,815,982	\$732.73
MOTLEY	386	\$2,443,982	\$487.46	370	\$2,304,229	\$478.62
NACOGDOCHES	22,901	\$193,145,307	\$648.75	22,739	\$190,904,044	\$645.79
NAVARRO	16,047	\$127,327,152	\$610.36	15,933	\$125,974,115	\$608.18
NEWTON	1,917	\$13,556,816	\$544.09	1,889	\$13,294,807	\$541.39
NOLAN	6,114	\$50,072,245	\$629.98	6,068	\$49,465,107	\$627.06
NUECES	151,447	\$1,557,263,611	\$790.97	145,010	\$1,433,736,273	\$760.55
OCHILTREE	4,222	\$42,410,850	\$772.77	4,194	\$42,100,065	\$772.23
OLDHAM	729	\$5,574,735	\$587.97	719	\$5,486,925	\$587.30
ORANGE	21,704	\$226,070,158	\$801.24	21,598	\$224,649,843	\$800.11
PALO PINTO	7,975	\$75,712,592	\$730.26	7,931	\$75,199,034	\$729.33
PANOLA	8,168	\$83,875,643	\$789.94	8,090	\$82,975,648	\$788.93
PARKER	25,665	\$226,507,636	\$678.88	25,477	\$223,922,746	\$676.09
PARMER	5,132	\$40,956,974	\$613.90	5,069	\$40,068,776	\$608.09
PECOS	5,694	\$52,996,266	\$715.91	5,632	\$52,092,013	\$711.44
POLK	10,713	\$89,528,936	\$642.83	10,633	\$88,506,458	\$640.29
POTTER	75,399	\$777,430,188	\$793.15	73,442	\$745,243,836	\$780.56

\*AWW = Average Weekly Wage

**Table 3. Covered Employment and Wages for All Industries**  
**Fourth Quarter 2009**

County	Total (Including Federal)			Total (Excluding Federal)		
	Employment	Wages	AWW*	Employment	Wages	AWW*
PRESIDIO	2,270	\$19,418,064	\$658.11	1,895	\$11,967,569	\$485.71
RAINS	1,624	\$11,179,957	\$529.55	1,602	\$10,875,043	\$522.08
RANDALL	28,595	\$238,745,148	\$642.25	28,515	\$237,625,687	\$641.03
REAGAN	1,670	\$19,103,647	\$879.77	1,653	\$18,937,495	\$881.09
REAL	714	\$4,296,885	\$462.71	709	\$4,224,771	\$458.58
RED RIVER	2,721	\$19,214,539	\$543.13	2,680	\$18,781,636	\$539.15
REEVES	3,832	\$31,403,271	\$630.44	3,746	\$30,020,075	\$616.40
REFUGIO	2,183	\$19,383,389	\$682.91	2,130	\$18,791,656	\$678.64
ROBERTS	260	\$2,051,364	\$606.14	253	\$1,986,269	\$603.12
ROBERTSON	3,695	\$34,127,842	\$710.54	3,646	\$33,571,658	\$708.36
ROCKWALL	20,378	\$184,382,336	\$696.00	20,277	\$183,010,420	\$694.28
RUNNELS	2,892	\$22,591,067	\$600.96	2,851	\$22,112,654	\$596.55
RUSK	13,924	\$139,862,902	\$772.69	13,839	\$138,813,683	\$771.59
SABINE	2,050	\$21,634,631	\$811.67	1,997	\$21,023,085	\$809.93
SAN AUGUSTINE	1,615	\$12,301,035	\$585.78	1,594	\$12,073,956	\$582.66
SAN JACINTO	2,117	\$16,087,330	\$584.64	2,093	\$15,756,212	\$579.17
SAN PATRICIO	17,431	\$176,165,693	\$777.43	17,234	\$173,334,328	\$773.68
SAN SABA	1,728	\$12,206,265	\$543.47	1,705	\$11,986,369	\$540.88
SCHLEICHER	757	\$6,676,439	\$678.13	746	\$6,514,532	\$671.74
SCURRY	6,164	\$63,154,761	\$788.13	6,126	\$62,671,793	\$787.00
SHACKELFORD	1,108	\$9,468,895	\$657.38	1,092	\$9,291,216	\$654.50
SHELBY	8,178	\$65,357,911	\$614.79	8,097	\$64,339,144	\$611.23
SHERMAN	853	\$7,056,866	\$636.63	841	\$6,923,114	\$632.98
SMITH	91,663	\$965,878,003	\$810.56	90,751	\$950,198,212	\$805.41
SOMERVELL	3,942	\$57,031,825	\$1,113.00	3,928	\$56,821,165	\$1,112.74
STARR	13,939	\$91,492,808	\$504.91	13,343	\$79,099,831	\$456.03
STEPHENS	3,117	\$28,260,652	\$697.36	3,097	\$27,996,402	\$695.45
STERLING	550	\$5,361,313	\$750.29	547	\$5,309,878	\$747.17
STONEWALL	523	\$4,088,549	\$600.96	510	\$3,948,522	\$595.16
SUTTON	2,489	\$35,223,086	\$1,088.43	2,483	\$35,132,765	\$1,088.56
SWISHER	2,140	\$16,704,251	\$600.35	2,108	\$16,321,755	\$595.60
TARRANT	748,711	\$9,177,782,312	\$942.93	734,491	\$8,887,099,604	\$930.74
TAYLOR	57,419	\$501,688,705	\$672.11	56,161	\$486,634,629	\$666.54
TERRELL	316	\$3,141,105	\$763.83	247	\$1,759,161	\$548.59
TERRY	4,022	\$36,630,562	\$700.64	3,989	\$36,196,769	\$697.95
THROCKMORTON	507	\$3,766,638	\$571.86	494	\$3,632,637	\$566.04
TITUS	16,355	\$162,921,552	\$766.26	16,240	\$161,297,732	\$763.99
TOM GREEN	43,946	\$383,790,021	\$671.79	42,586	\$366,129,941	\$661.34
TRAVIS	559,396	\$7,517,952,208	\$1,033.80	550,513	\$7,374,015,293	\$1,030.37
TRINITY	2,293	\$15,063,912	\$505.35	2,267	\$14,803,822	\$502.39
TYLER	3,953	\$30,036,869	\$584.50	3,903	\$29,404,040	\$579.52
UPSHUR	6,447	\$51,421,328	\$613.57	6,384	\$50,690,271	\$610.79
UPTON	1,418	\$17,220,587	\$934.18	1,412	\$17,157,890	\$934.51
UVALDE	9,176	\$71,464,018	\$599.09	8,917	\$66,458,967	\$573.33
VAL VERDE	16,983	\$145,315,836	\$658.21	14,764	\$108,721,059	\$566.44
VAN ZANDT	10,202	\$77,651,713	\$585.47	10,109	\$76,541,590	\$582.45
VICTORIA	36,204	\$354,058,425	\$752.27	35,955	\$350,503,539	\$749.87

\*AWW = Average Weekly Wage

**Table 3. Covered Employment and Wages for All Industries**  
**Fourth Quarter 2009**

County	Total (Including Federal)			Total (Excluding Federal)		
	Employment	Wages	AWW*	Employment	Wages	AWW*
WALKER	23,521	\$202,199,566	\$661.26	23,373	\$200,009,448	\$658.26
WALLER	13,451	\$141,608,237	\$809.80	13,395	\$140,908,387	\$809.17
WARD	3,438	\$37,154,457	\$831.23	3,419	\$36,894,372	\$830.08
WASHINGTON	14,409	\$130,876,546	\$698.67	14,329	\$129,801,993	\$696.82
WEBB	86,043	\$688,310,077	\$615.36	82,864	\$622,891,309	\$578.23
WHARTON	14,596	\$116,670,026	\$614.87	14,502	\$115,453,784	\$612.42
WHEELER	2,107	\$17,348,102	\$633.45	2,079	\$17,055,613	\$630.96
WICHITA	52,650	\$481,233,051	\$703.09	50,492	\$456,795,018	\$695.91
WILBARGER	6,983	\$62,602,281	\$689.64	6,938	\$61,947,464	\$686.86
WILLACY	3,640	\$28,154,453	\$595.03	3,607	\$27,788,271	\$592.61
WILLIAMSON	119,039	\$1,412,481,596	\$912.74	117,502	\$1,390,384,575	\$910.22
WILSON	6,505	\$45,942,780	\$543.26	6,441	\$45,149,602	\$539.24
WINKLER	2,201	\$26,283,092	\$918.71	2,191	\$26,151,444	\$918.00
WISE	17,585	\$176,306,503	\$771.21	17,472	\$174,845,962	\$769.79
WOOD	9,235	\$72,402,811	\$603.06	9,144	\$71,261,699	\$599.46
YOAKUM	3,269	\$35,512,627	\$835.57	3,251	\$35,304,775	\$835.27
YOUNG	6,631	\$61,732,394	\$716.13	6,574	\$60,995,994	\$713.76
ZAPATA	3,358	\$32,416,347	\$742.57	3,183	\$29,105,728	\$703.32
ZAVALA	2,904	\$17,371,847	\$460.16	2,893	\$17,217,179	\$457.79

\*AWW = Average Weekly Wage



**TEXAS**  
**WORKFORCE SOLUTIONS**



*Another quality product from*  
**Texas Workforce Commission**  
**Labor Market and Career Information**  
101 East 15th Street, Room 0252  
Austin, Texas 78778-0001  
1-866-938-4444  
(512) 936-3278  
FAX: (512) 936-3208  
[www.lmci.state.tx.us](http://www.lmci.state.tx.us)

Equal Opportunity Employer/Programs. Auxiliary aids and services are available,  
on request, to individuals with disabilities.  
Contact Relay Texas @ 7-1-1

Copies of this publication have been distributed in compliance with the State Depository Law, and are available for public use through the Texas State Publication Depository Program at the Texas State Library and other state depository libraries.