

IN THIS ISSUE

Texas Nonagricultural Wage & Salary  
 Employment (Seasonally Adjusted) ..... 1  
 Texas & U.S. Unemployment Rates ..... 2  
 Texas Nonagricultural Wage & Salary  
 Employment (Not Seasonally Adjusted) ..... 3  
 MSA Nonagricultural Wage & Salary  
 Employment (Not Seasonally Adjusted) ..... 5  
 Highlights of the Texas Labor Force ..... 8  
 Hours & Earnings ..... 8  
 Featured Article:  
*Texas Employment Projections 2002-2012* ... 9  
 Notice Regarding LAUS Estimates ..... 10  
 Glossary ..... 11  
 "Happenings Around the State" ..... 11  
 Indicators ..... 12

A MONTHLY NEWSLETTER OF THE TEXAS WORKFORCE COMMISSION

Government Publications  
 Texas State Documents

# TEXAS

AUG 12 2005

Depository  
 Dallas Public Library

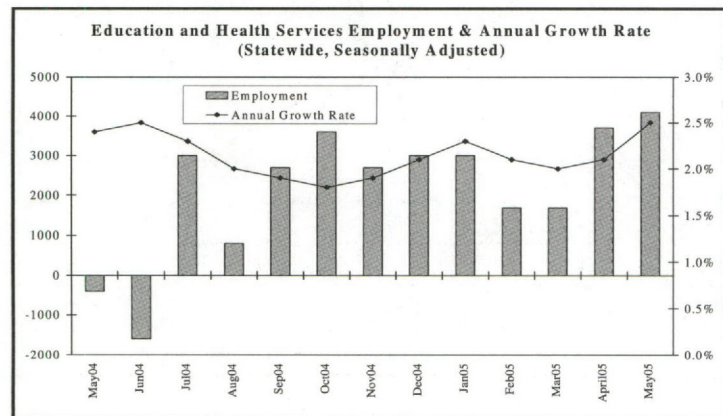
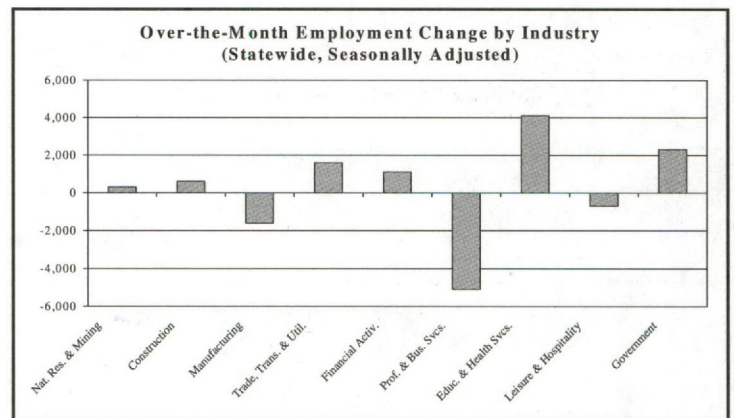
## LABOR MARKET REVIEW

JUNE 2005

### Texas Nonagricultural Wage and Salary Employment (Seasonally Adjusted)

Total Nonagricultural Wage and Salary Employment in Texas rose by 6,000 jobs in May, totaling 27,100 jobs added thus far in 2005. Education and Health Services contributed the bulk of May's job growth, adding 4,100 positions, followed by Government with an increase of 2,300 jobs. The annual growth rate for Total Nonagricultural Employment remained unchanged at 1.2 percent. The rate has remained positive for 17 consecutive months.

Following a gain of 3,700 jobs in April, Education and Health Services employment posted a boost of 4,100 positions in May. This was the largest over-the-month increase since October 2003. Consequently, the annual growth rate rose from 2.1 percent in April to 2.5 percent in May, an increase of 28,400 jobs over the year. This was the highest annual growth rate since June 2004.



Construction added 600 jobs in May, marking three consecutive months of growth. Annual growth posted its strongest gain since August 2001, with 7,700 jobs created since last May. The growth rate for the industry also continued to climb, reaching 1.4 percent.

Natural Resources and Mining employment grew in May, adding 300 jobs. The annual growth rate has remained positive since April 2003. A total of 3,900 jobs have been added in Natural Resources and Mining since May 2004.

Leisure and Hospitality employment decreased by 700 jobs in May, following an increase of 600 jobs in April. This was the first over-the-month loss since April 2003. Although the annual growth rate fell slightly to 1.6 percent in May, the industry experienced an increase of 14,500 positions over the year.

Government employment gained 2,300 jobs in May. The annual growth rate increased slightly to 0.9 percent and has remained positive for the past 13 months. A total of 14,200 jobs have been added in Government over the year.

Trade, Transportation, and Utilities added 1,600 jobs in May, following a sizeable gain of 3,900 positions in April. This industry has experienced only three over-the-month job losses over the past 12 months and thus gained a total of 18,000 jobs since May 2004. The annual growth rate of 0.9 percent was unchanged from April 2005.

Financial Activities added 1,100 jobs in May, following a decline of 900 jobs in April. The annual growth rate has remained above 1.0 percent since July 2003.

After three consecutive monthly job gains totaling 3,700, Manufacturing employment fell by 1,600 positions in May. The loss of jobs for the month was still below the five-year average decline for May of 3,000. Annual growth was virtually unchanged.

Employment in Professional and Business Services fell by 5,100 jobs in May, following an increase of 1,400 positions in April. This was the first over-the-month employment drop since December 2004. As a result, the annual growth rate dipped to 1.6 percent; however, 17,200 jobs have been added in this industry over the year.



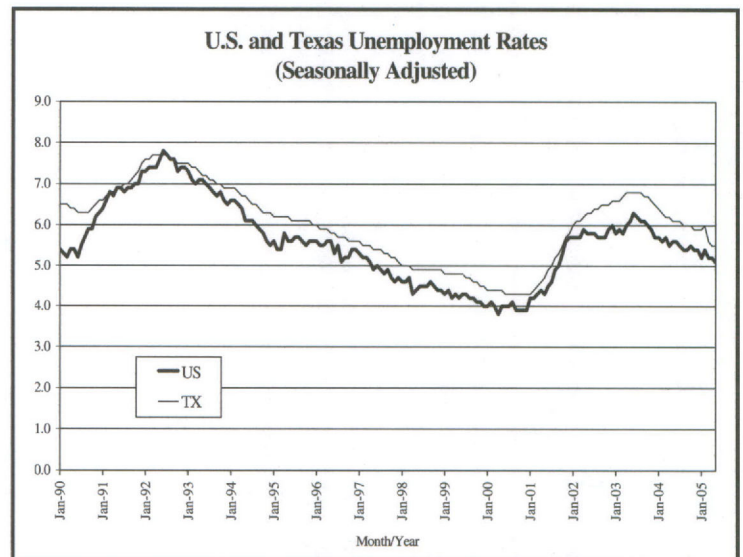
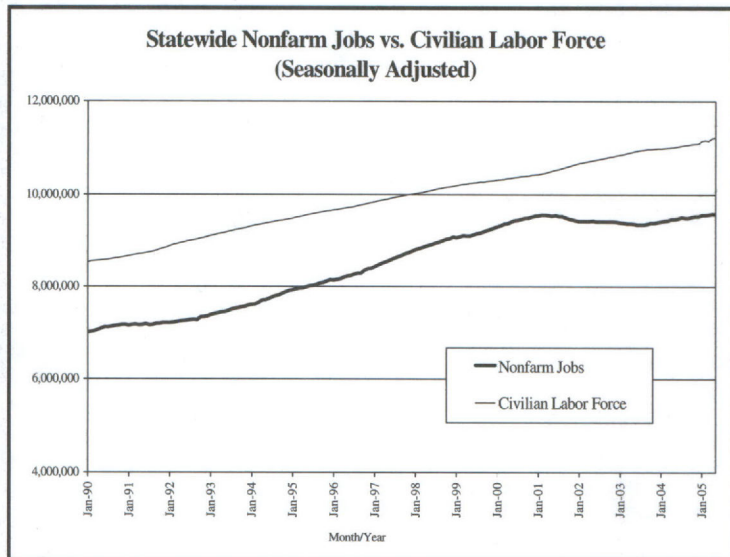
TEXAS NONAGRICULTURAL WAGE AND SALARY EMPLOYMENT  
SEASONALLY ADJUSTED<sup>+</sup>

INDUSTRY TITLE	May 2005*	April 2005	May 2004	April '05 to May '05		May '04 to May '05	
				Absolute Change	Percent Change	Absolute Change	Percent Change
<b>TOTAL NONAG. W&amp;S EMPLOYMENT</b>	<b>9,580,400</b>	<b>9,574,400</b>	<b>9,463,000</b>	<b>6,000</b>	<b>0.1</b>	<b>117,400</b>	<b>1.2</b>
<b>GOODS PRODUCING</b>							
Natural Resources & Mining	156,400	156,100	152,500	300	0.2	3,900	2.6
Construction	548,500	547,900	540,800	600	0.1	7,700	1.4
Manufacturing	887,700	889,300	889,900	-1,600	-0.2	-2,200	-0.2
<b>SERVICE PROVIDING</b>							
Trade, Transportation, & Utilities	1,962,200	1,960,600	1,944,200	1,600	0.1	18,000	0.9
Financial Activities	601,000	599,900	592,600	1,100	0.2	8,400	1.4
Professional & Business Services	1,102,800	1,107,900	1,085,600	-5,100	-0.5	17,200	1.6
Education & Health Services	1,171,200	1,167,100	1,142,800	4,100	0.4	28,400	2.5
Leisure & Hospitality	895,100	895,800	880,600	-700	-0.1	14,500	1.6
Government	1,666,000	1,663,700	1,651,800	2,300	0.1	14,200	0.9

Note: The number of nonagricultural jobs in Texas is without reference to place of residence of workers. Total Nonagricultural employment is independently seasonally adjusted and employment for the individual sectors is not additive to the total. Seasonally adjusted estimates are not calculated for the *Information* and *Other Services* industries.

\*Estimates for the current month are preliminary. All estimates are subject to revision.

+All elements of seasonality are factored out to achieve an estimate which reflects the basic underlying trend.



TEXAS AND U.S. CIVILIAN LABOR FORCE ESTIMATES

TEXAS*					UNITED STATES**				
Not Seasonally Adjusted		CLF	Employment	Unemp. Rate	CLF	Employment	Unemp. Rate		
May	2005	11,175,400	10,578,500	596,900	5.3	148,878,000	141,591,000	7,287,000	4.9
April	2005	11,161,800	10,572,200	589,600	5.3	148,274,000	140,939,000	7,335,000	4.9
May	2004	10,958,000	10,311,400	646,600	5.9	146,659,000	138,867,000	7,792,000	5.3
Seasonally Adjusted		CLF	Employment	Unemp. Rate	CLF	Employment	Unemp. Rate		
May	2005	11,216,800	10,595,600	621,200	5.5	149,122,000	141,475,000	7,647,000	5.1
April	2005	11,208,500	10,587,200	621,300	5.5	148,762,000	141,099,000	7,663,000	5.2
May	2004	11,016,000	10,342,500	673,500	6.1	147,018,000	138,846,000	8,172,000	5.6

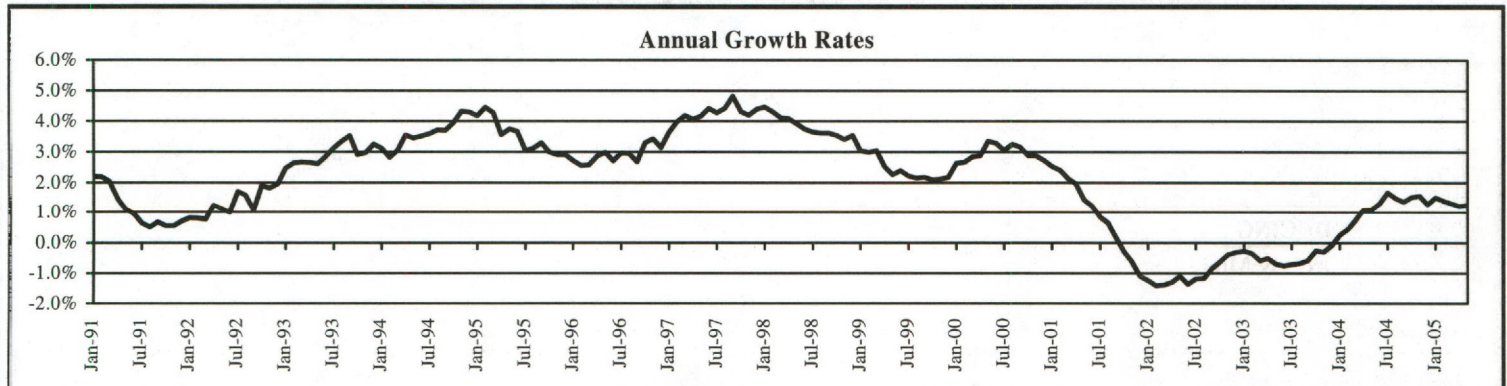
Note: Only the actual series estimates for Texas and the U.S. are comparable to sub-state estimates. Current month estimates for Texas are preliminary. All estimates are subject to revision. In seasonally adjusted estimates, all elements of seasonality are factored out to achieve an estimate which reflects the basic underlying trend.

\*Source - Labor Market and Career Information Department, Texas Workforce Commission (model-based methodology)

\*\*Source - Bureau of Labor Statistics, U.S. Department of Labor (Current Population Survey)

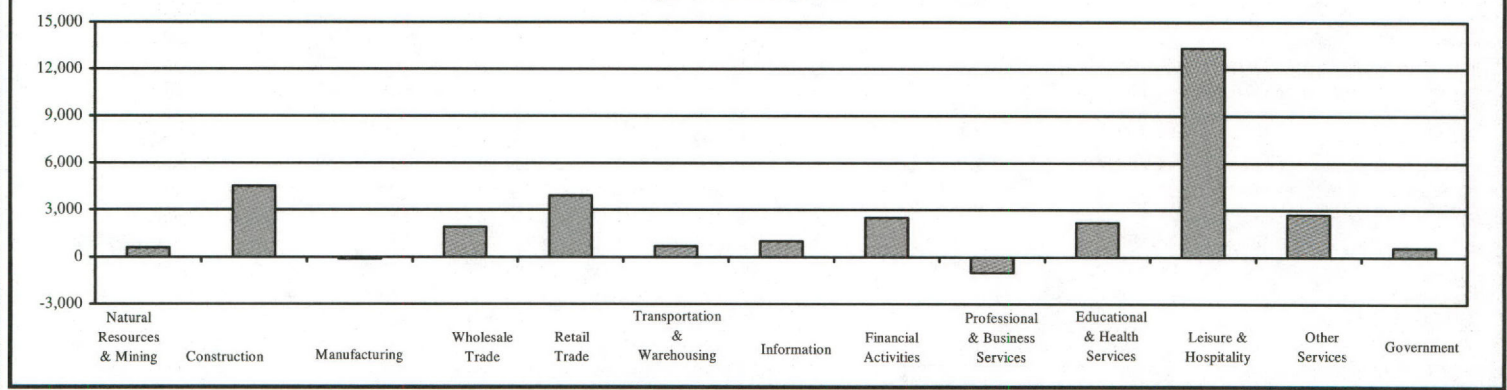


Texas Nonagricultural Wage and Salary Employment (Not Seasonally Adjusted)



				Apr '05 to May '05		May '04 to May '05	
	May '05*	Apr '05	May '04	Change	% Change	Change	% Change
<b>TOTAL NONFARM</b>	9,625,400	9,592,600	9,505,800	32,800	0.3%	119,600	1.3%
<b>TOTAL PRIVATE (total nonfarm less government)</b>	7,932,700	7,900,500	7,825,600	32,200	0.4%	107,100	1.4%
<b>GOODS PRODUCING</b>	1,593,900	1,588,900	1,584,700	5,000	0.3%	9,200	0.6%
<b>Natural Resources and Mining (NAICS 1133 [logging], NAICS 21)</b>	155,900	155,300	152,000	600	0.4%	3,900	2.6%
Mining (NAICS 21)	154,000	153,400	150,100	600	0.4%	3,900	2.6%
Oil and Gas Extraction (NAICS 211)	63,100	63,200	63,700	-100	-0.2%	-600	-0.9%
Support Activities for Mining (NAICS 213)	80,900	80,300	76,300	600	0.7%	4,600	6.0%
<b>Construction (NAICS 23)</b>	550,600	546,100	543,400	4,500	0.8%	7,200	1.3%
Construction of Buildings (NAICS 236)	131,500	132,000	130,700	-500	-0.4%	800	0.6%
Heavy and Civil Engineering Construction (NAICS 237)	102,300	101,100	98,400	1,200	1.2%	3,900	4.0%
Specialty Trade Contractors (NAICS 238)	316,800	313,000	314,300	3,800	1.2%	2,500	0.8%
<b>Manufacturing (NAICS 31-33)</b>	887,400	887,500	889,300	-100	0.0%	-1,900	-0.2%
Durable Goods	563,100	563,900	559,000	-800	-0.1%	4,100	0.7%
Wood Product Manufacturing (NAICS 321)	27,300	27,000	27,000	300	1.1%	300	1.1%
Nonmetallic Mineral Product Manufacturing (NAICS 327)	43,800	44,000	43,300	-200	-0.5%	500	1.2%
Primary Metal Manufacturing (NAICS 331)	26,200	25,900	24,600	300	1.2%	1,600	6.5%
Fabricated Metal Product Manufacturing (NAICS 332)	110,300	110,000	106,300	300	0.3%	4,000	3.8%
Machinery Manufacturing (NAICS 333)	77,500	77,200	76,700	300	0.4%	800	1.0%
Computer and Electronic Product Manufacturing (NAICS 334)	110,700	111,500	112,200	-800	-0.7%	-1,500	-1.3%
Electric Equipment, Appliance, and Component Mfg (NAICS 335)	17,700	17,800	17,900	-100	-0.6%	-200	-1.1%
Transportation Equipment Manufacturing (NAICS 336)	85,400	85,700	85,300	-300	-0.4%	100	0.1%
Furniture and Related Product Manufacturing (NAICS 337)	30,400	30,700	31,000	-300	-1.0%	-600	-1.9%
Miscellaneous Manufacturing (NAICS 339)	33,800	34,100	34,700	-300	-0.9%	-900	-2.6%
Nondurable Goods	324,300	323,600	330,300	700	0.2%	-6,000	-1.8%
Food Manufacturing (NAICS 311)	88,600	88,700	90,900	-100	-0.1%	-2,300	-2.5%
Beverage and Tobacco Product Manufacturing (NAICS 312)	10,100	10,200	10,200	-100	-1.0%	-100	-1.0%
Paper Manufacturing (NAICS 322)	21,400	21,500	22,000	-100	-0.5%	-600	-2.7%
Printing and Related Support Manufacturing (NAICS 323)	36,900	36,600	37,500	300	0.8%	-600	-1.6%
Petroleum and Coal Products Manufacturing (NAICS 324)	23,600	23,600	23,400	0	0.0%	200	0.9%
Chemical Manufacturing (NAICS 325)	72,000	71,700	74,400	300	0.4%	-2,400	-3.2%
Plastics and Rubber Manufacturing (NAICS 326)	45,300	45,100	44,700	200	0.4%	600	1.3%

Statewide Over-the-Month Change (Not Seasonally Adjusted)  
April 2005 to May 2005



\*Estimates for the current month are preliminary. All estimates are subject to revision. The number of nonagricultural jobs in Texas is without reference to place of residence of workers. Estimates of the TWC are in cooperation with the Bureau of Labor Statistics, U.S. Department of Labor.



Texas Nonagricultural Wage and Salary Employment (Not Seasonally Adjusted)

			Apr '05 to May '05		May '04 to May '05		
	May '05*	Apr '05	May '04	Change	% Change	Change	% Change
<b>SERVICE PROVIDING</b>	8,031,500	8,003,700	7,921,100	27,800	0.3%	110,400	1.4%
<b>Private Service Providing</b>	6,338,800	6,311,600	6,240,900	27,200	0.4%	97,900	1.6%
<b>Trade, Transportation, and Utilities (NAICS 42,44,45,48,49,22)</b>	1,952,600	1,946,100	1,933,000	6,500	0.3%	19,600	1.0%
<b>Wholesale Trade (NAICS 42)</b>	469,700	467,800	462,100	1,900	0.4%	7,600	1.6%
<i>Merchant Wholesalers, Durable Goods (NAICS 423)</i>	269,800	268,700	263,400	1,100	0.4%	6,400	2.4%
<i>Merchant Wholesalers, Nondurable Goods (NAICS 424)</i>	154,800	154,300	153,400	500	0.3%	1,400	0.9%
<b>Retail Trade (NAICS 44-45)</b>	1,086,500	1,082,600	1,075,100	3,900	0.4%	11,400	1.1%
<i>Motor Vehicle and Parts Dealers (NAICS 441)</i>	150,900	150,300	151,100	600	0.4%	-200	-0.1%
<i>Furniture and Home Furnishings Stores (NAICS 442)</i>	41,300	41,400	40,200	-100	-0.2%	1,100	2.7%
<i>Electronics and Appliance Stores (NAICS 443)</i>	41,200	41,400	40,600	-200	-0.5%	600	1.5%
<i>Building Material and Garden Equipment and Supplies (NAICS 444)</i>	89,000	88,900	86,500	100	0.1%	2,500	2.9%
<i>Food and Beverage Stores (NAICS 445)</i>	190,500	189,800	188,600	700	0.4%	1,900	1.0%
<i>Health and Personal Care Stores (NAICS 446)</i>	56,500	56,500	56,400	0	0.0%	100	0.2%
<i>Gasoline Stations (NAICS 447)</i>	68,300	67,700	68,700	600	0.9%	-400	-0.6%
<i>Clothing and Clothing Accessories Stores (NAICS 448)</i>	97,500	96,900	96,400	600	0.6%	1,100	1.1%
<i>Sporting Goods, Hobby, Book, and Music Stores (NAICS 451)</i>	33,100	33,200	34,200	-100	-0.3%	-1,100	-3.2%
<i>General Merchandise Stores (NAICS 452)</i>	237,600	236,000	231,400	1,600	0.7%	6,200	2.7%
<i>Miscellaneous Store Retailers (NAICS 453)</i>	61,000	60,300	60,900	700	1.2%	100	0.2%
<i>Nonstore Retailers (NAICS 454)</i>	19,600	20,200	20,100	-600	-3.0%	-500	-2.5%
<b>Transportation, Warehousing, and Utilities (NAICS 48-49,22)</b>	396,400	395,700	395,800	700	0.2%	600	0.2%
Transportation and Warehousing (NAICS 48,49)	349,900	349,000	348,200	900	0.3%	1,700	0.5%
<i>Air Transportation (NAICS 481)</i>	62,100	62,200	66,000	-100	-0.2%	-3,900	-5.9%
<i>Rail Transportation (NAICS 482)</i>	17,000	17,000	16,400	0	0.0%	600	3.7%
<i>Truck Transportation (NAICS 484)</i>	102,700	102,300	101,800	400	0.4%	900	0.9%
<i>Pipeline Transportation (NAICS 486)</i>	11,400	11,600	12,000	-200	-1.7%	-600	-5.0%
<i>Support Activities for Transportation (NAICS 488)</i>	62,400	62,000	61,100	400	0.6%	1,300	2.1%
<i>Couriers and Messengers (NAICS 492)</i>	36,000	35,600	35,200	400	1.1%	800	2.3%
<i>Warehousing and Storage (NAICS 493)</i>	37,300	37,300	34,800	0	0.0%	2,500	7.2%
Utilities (NAICS 22)	46,500	46,700	47,600	-200	-0.4%	-1,100	-2.3%
<b>Information (NAICS 51)</b>	228,300	227,300	226,600	1,000	0.4%	1,700	0.8%
<i>Publishing Industries (Except Internet) (NAICS 511)</i>	50,100	50,000	49,200	100	0.2%	900	1.8%
<i>Telecommunications (NAICS 517)</i>	93,400	93,700	94,700	-300	-0.3%	-1,300	-1.4%
<i>Internet Service Providers, Web Search Portals (NAICS 518)</i>	36,600	36,700	35,900	-100	-0.3%	700	1.9%
<b>Financial Activities (NAICS 52,53)</b>	600,500	598,000	592,100	2,500	0.4%	8,400	1.4%
Finance and Insurance (NAICS 52)	428,300	426,800	422,400	1,500	0.4%	5,900	1.4%
<i>Credit Intermediation and Related Activities (NAICS 522)</i>	220,500	219,600	215,500	900	0.4%	5,000	2.3%
<i>Securities, Commodities Contracts, and Other Financial (NAICS 523)</i>	39,600	39,400	38,200	200	0.5%	1,400	3.7%
<i>Insurance Carriers and Related Activities (NAICS 524)</i>	157,400	156,900	159,000	500	0.3%	-1,600	-1.0%
Real Estate and Rental and Leasing (NAICS 53)	172,200	171,200	169,700	1,000	0.6%	2,500	1.5%
<i>Real Estate (NAICS 531)</i>	111,900	111,200	110,600	700	0.6%	1,300	1.2%
<i>Rental and Leasing Services (NAICS 532)</i>	58,100	57,800	57,300	300	0.5%	800	1.4%
<b>Professional and Business Services (NAICS 54,55,56)</b>	1,103,200	1,104,200	1,086,500	-1,000	-0.1%	16,700	1.5%
Professional, Scientific and Technical Services (NAICS 54)	457,700	465,600	460,300	-7,900	-1.7%	-2,600	-0.6%
Management of Companies and Enterprises (NAICS 55)	49,400	48,800	48,500	600	1.2%	900	1.9%
Admin and Support and Waste Mgmt and Remediation (NAICS 56)	596,100	589,800	577,700	6,300	1.1%	18,400	3.2%
<i>Administrative and Support Services (NAICS 561)</i>	573,400	567,100	555,500	6,300	1.1%	17,900	3.2%
<b>Educational and Health Services (NAICS 61,62)</b>	1,171,100	1,168,900	1,144,500	2,200	0.2%	26,600	2.3%
Educational Services (NAICS 61)	137,500	139,500	136,100	-2,000	-1.4%	1,400	1.0%
Health Care and Social Assistance (NAICS 62)	1,033,600	1,029,400	1,008,400	4,200	0.4%	25,200	2.5%
<i>Ambulatory Health Care Services (NAICS 621)</i>	454,200	451,500	435,500	2,700	0.6%	18,700	4.3%
<i>Hospitals (NAICS 622)</i>	258,300	258,200	256,000	100	0.0%	2,300	0.9%
<i>Nursing and Residential Care Facilities (NAICS 623)</i>	147,400	146,800	148,200	600	0.4%	-800	-0.5%
<i>Social Assistance (NAICS 624)</i>	173,700	172,900	168,700	800	0.5%	5,000	3.0%
<b>Leisure and Hospitality (NAICS 71,72)</b>	914,300	901,000	897,500	13,300	1.5%	16,800	1.9%
Arts, Entertainment, and Recreation (NAICS 71)	109,600	103,600	105,400	6,000	5.8%	4,200	4.0%
<i>Amusement, Gambling, and Recreation (NAICS 713)</i>	77,700	72,700	76,800	5,000	6.9%	900	1.2%
Accommodation and Food Services (NAICS 72)	804,700	797,400	792,100	7,300	0.9%	12,600	1.6%
<i>Accommodation (NAICS 721)</i>	96,200	95,200	94,200	1,000	1.1%	2,000	2.1%
<i>Food Services and Drinking Places (NAICS 722)</i>	708,500	702,200	697,900	6,300	0.9%	10,600	1.5%
<b>Other Services (NAICS 81)</b>	368,800	366,100	360,700	2,700	0.7%	8,100	2.2%
<i>Repair and Maintenance (NAICS 811)</i>	107,100	106,400	104,500	700	0.7%	2,600	2.5%
<i>Personal and Laundry Services (NAICS 812)</i>	98,400	97,800	94,500	600	0.6%	3,900	4.1%
<i>Religious, Grantmaking, Civic, Prof Organizations (NAICS 813)</i>	163,300	161,900	161,700	1,400	0.9%	1,600	1.0%
<b>Government</b>	1,692,700	1,692,100	1,680,200	600	0.0%	12,500	0.7%
Federal Government	180,700	181,400	180,200	-700	-0.4%	500	0.3%
State Government	342,200	344,200	344,800	-2,000	-0.6%	-2,600	-0.8%
Local Government	1,169,800	1,166,500	1,155,200	3,300	0.3%	14,600	1.3%

\*Estimates for the current month are preliminary. All estimates are subject to revision. The number of nonagricultural jobs in Texas is without reference to place of residence of workers. Estimates of the TWC are in cooperation with the Bureau of Labor Statistics, U.S. Department of Labor.



### Metropolitan Statistical Area (MSA) Nonagricultural Wage & Salary Employment (Not Seasonally Adjusted)

Total Nonagricultural employment in the MSAs grew by 23,200 jobs in May. Leisure and Hospitality dominated May's job gain with an addition of 12,800 positions as amusement parks, sporting venues, and vacation spots opened for the summer season. The MSAs have added 136,800 Total Nonagricultural jobs since May 2004.

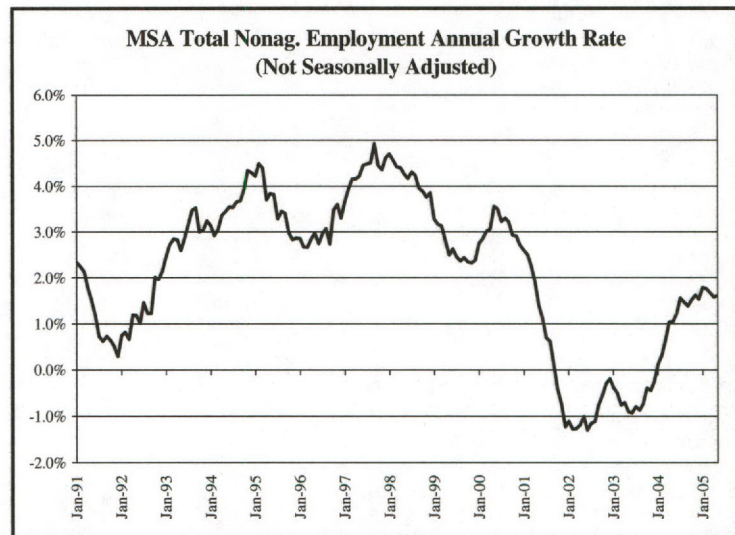
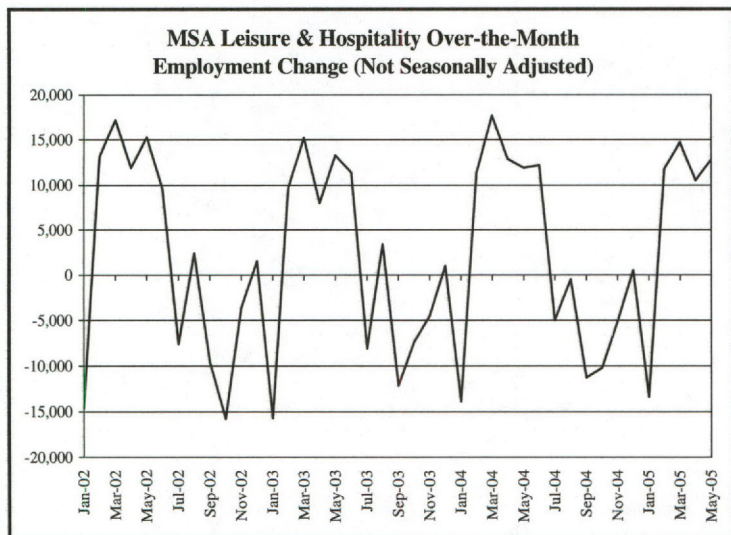
Professional and Business Services employment fell by 900 jobs in May, due primarily to seasonal reductions in Accounting, Tax Preparation, and Bookkeeping Services. Over the year, Professional and Business Services has added 22,700 jobs.

Employment in Natural Resources, Mining, and Construction grew by 3,000 jobs over the month in May, due primarily to seasonal increases in construction jobs. The Dallas-Forth Worth-Arlington MSA led the gain with 2,000 new jobs. The San Antonio and Houston-Baytown-Sugar Land MSAs added 600 and 500 jobs, respectively.

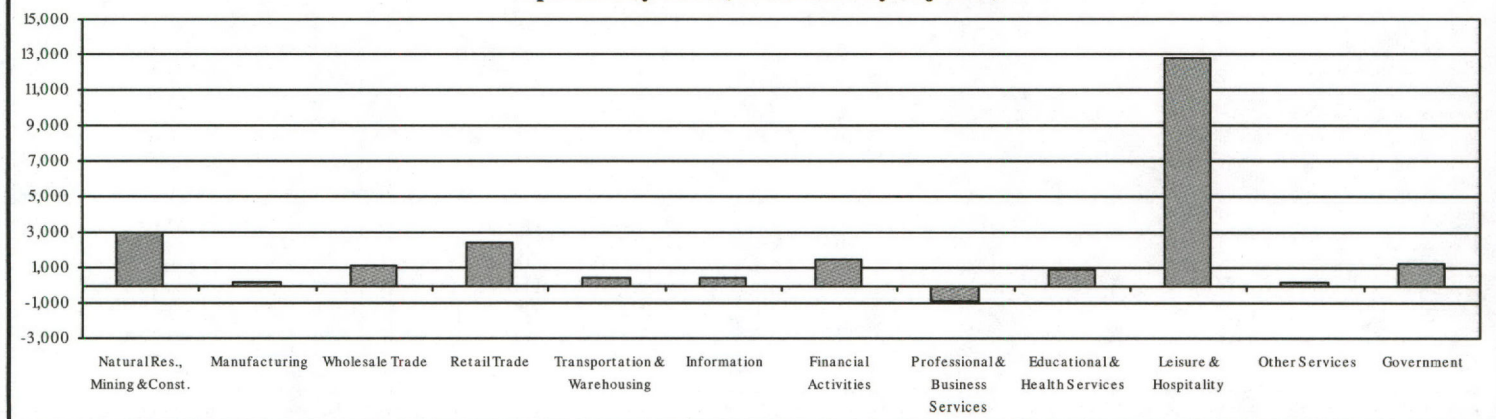
Educational and Health Services employment grew by 900 in May. The largest gain was in the Houston-Baytown-Sugar Land MSA with 500 new jobs, followed by the Dallas-Fort Worth-Arlington MSA with an addition of 400 jobs.

Employment in Retail Trade in the MSAs increased by 2,400 jobs in May. Two areas, the Dallas-Plano-Irving MD\* and Houston-Baytown-Sugar Land MSA, accounted for 50 percent of this job creation.

Leisure and Hospitality employment in the MSAs, triggered by strong seasonal demand, added 12,800 jobs in May. Five areas, Austin-Round Rock MSA, Dallas-Plano-Irving MD, Fort Worth-Arlington MD, Houston-Baytown-Sugar Land MSA, and the San Antonio MSA, were responsible for almost 79 percent of the monthly increase. All metro areas reported job gains in Leisure and Hospitality in May.



#### Metropolitan Statistical Area Over-the-Month Employment Change: April to May 2005 (Not Seasonally Adjusted)



\*MD - Metropolitan Division. The Dallas-Fort Worth-Arlington MSA is comprised of the Dallas-Plano-Irving MD and the Fort Worth-Arlington MD.



Largest Four MSAs Nonagricultural Wage and Salary Employment (Not Seasonally Adjusted)

	DALLAS-FORT WORTH-ARLINGTON			DALLAS-PLANO-IRVING MD**			HOUSTON-BAYTOWN-SUGARLAND		
	May '05*	Apr '05	May '04	May '05*	Apr '05	May '04	May '05*	Apr '05	May '04
<b>TOTAL NONFARM</b>	<b>2,736,900</b>	<b>2,730,800</b>	<b>2,699,400</b>	<b>1,933,400</b>	<b>1,929,800</b>	<b>1,905,100</b>	<b>2,319,400</b>	<b>2,311,400</b>	<b>2,287,900</b>
<b>GOODS PRODUCING</b>	<b>455,300</b>	<b>453,800</b>	<b>451,300</b>	<b>305,100</b>	<b>304,100</b>	<b>302,500</b>	<b>445,400</b>	<b>444,200</b>	<b>438,400</b>
Natural Resources, Mining & Construction	160,400	158,400	157,000	108,600	106,900	105,900	238,500	238,000	231,200
Manufacturing	294,900	295,400	294,300	196,500	197,200	196,600	206,900	206,200	207,200
Durable Goods	207,800	208,200	206,800	137,500	138,100	136,900	125,000	124,500	123,200
Fabricated Metal Product Manufacturing	-	-	-	20,600	20,600	19,700	39,300	39,200	38,100
Computer and Electronic Product Manufacturing	52,800	53,400	53,500	45,800	46,400	46,600	18,600	18,500	19,100
Nondurable Goods	87,100	87,200	87,500	59,000	59,100	59,700	81,900	81,700	84,000
Food Manufacturing	-	-	-	15,700	15,900	16,000	12,400	12,500	11,900
<b>SERVICE PROVIDING</b>	<b>2,281,600</b>	<b>2,277,000</b>	<b>2,248,100</b>	<b>1,628,300</b>	<b>1,625,700</b>	<b>1,602,600</b>	<b>1,874,000</b>	<b>1,867,200</b>	<b>1,849,500</b>
Private Service Providing	1,921,300	1,917,900	1,898,500	1,383,200	1,381,700	1,364,800	1,530,400	1,523,400	1,510,900
Wholesale Trade	159,800	159,500	158,700	121,700	121,500	121,300	119,400	118,900	118,700
Merchant Wholesalers, Durable Goods	93,400	93,200	93,100	70,500	70,400	70,500	71,200	71,200	71,300
Merchant Wholesalers, Nondurable Goods	48,500	48,400	48,000	37,000	37,000	36,500	37,800	37,600	36,900
Retail Trade	297,200	296,500	295,800	203,100	202,500	202,600	242,700	242,100	239,900
Motor Vehicle and Parts Dealers	-	-	-	27,100	27,000	27,100	34,600	34,400	34,700
Bldg. Material and Garden Eqpmnt. and Supplies Dlr.	23,000	23,000	22,500	15,000	15,000	14,700	18,100	18,300	18,600
Food and Beverage Stores	47,000	46,900	47,000	32,000	31,900	31,900	48,400	48,200	47,500
Clothing and Clothing Accessories Stores	-	-	-	21,400	21,400	20,700	22,900	22,800	22,800
General Merchandise Stores	64,800	64,400	62,400	44,300	43,900	43,200	53,600	53,200	51,600
Transportation, Warehousing, and Utilities	134,100	133,800	133,000	78,100	77,900	74,600	109,800	109,800	111,100
Utilities	-	-	-	7,000	7,000	7,100	15,600	15,700	15,700
Information	93,400	93,300	94,800	76,000	76,000	77,200	37,800	37,800	37,800
Telecommunications	43,100	43,000	43,900	34,800	34,700	35,300	16,200	16,100	16,100
Financial Activities	216,300	216,000	213,700	170,500	170,300	168,800	135,900	135,500	136,800
Finance and Insurance	160,200	160,000	157,700	126,400	126,300	124,800	87,100	86,900	89,000
Credit Intermediation and Related Activities	81,000	81,100	79,300	62,000	62,200	60,800	41,100	41,000	40,800
Insurance Carriers and Related Activities	59,700	59,600	59,500	48,500	48,400	48,500	32,600	32,500	33,000
Real Estate and Rental and Leasing	-	-	-	44,100	44,000	44,000	48,800	48,600	47,800
Professional and Business Services	377,500	377,300	365,800	291,000	291,000	282,400	315,000	315,100	311,300
Professional, Scientific, and Technical Services	156,700	158,400	152,800	127,400	128,900	124,100	149,900	150,700	147,600
Admin. Support and Waste Mgmt. and Remediation	200,400	198,200	194,300	147,700	146,500	143,500	152,200	151,500	152,300
Education and Health Services	277,800	277,400	274,500	191,200	191,000	188,900	259,000	258,500	253,100
Health Care and Social Assistance	238,400	237,900	235,300	161,900	161,600	160,200	218,500	217,600	212,800
Ambulatory Health Care Services	-	-	-	75,200	74,700	72,300	90,000	89,500	87,300
Hospitals	61,900	62,000	61,900	40,000	40,000	40,200	64,000	63,800	62,300
Leisure and Hospitality	256,600	254,900	254,300	176,700	175,900	173,900	213,100	208,200	206,500
Arts, Entertainment, and Recreation	-	-	-	21,000	20,700	20,300	28,800	26,100	27,900
Accommodation and Food Services	225,400	224,500	222,900	155,700	155,200	153,600	184,300	182,100	178,600
Food Services and Drinking Places	195,700	195,100	193,700	134,200	134,000	132,300	164,300	162,300	158,700
Other Services	108,600	109,200	107,900	74,900	75,600	75,100	97,700	97,500	95,700
Government	360,300	359,100	349,600	245,100	244,000	237,800	343,600	343,800	338,600
Federal	44,800	45,000	45,100	29,500	29,600	30,000	28,100	28,200	27,600
State	40,900	40,900	40,400	31,100	31,000	30,400	68,100	68,600	67,400
Local	274,600	273,200	264,100	184,500	183,400	177,400	247,400	247,000	243,600
	AUSTIN-ROUND ROCK			FORT WORTH-ARLINGTON MD**			SAN ANTONIO		
	May '05*	Apr '05	May '04	May '05*	Apr '05	May '04	May '05*	Apr '05	May '04
<b>TOTAL NONFARM</b>	<b>684,500</b>	<b>682,600</b>	<b>667,100</b>	<b>803,500</b>	<b>801,000</b>	<b>794,300</b>	<b>776,400</b>	<b>772,900</b>	<b>764,000</b>
<b>GOODS PRODUCING</b>	<b>96,800</b>	<b>96,700</b>	<b>94,200</b>	<b>150,200</b>	<b>149,700</b>	<b>148,800</b>	<b>90,700</b>	<b>90,100</b>	<b>90,100</b>
Natural Resources, Mining & Construction	39,300	39,200	37,200	51,800	51,500	51,100	44,800	44,200	44,300
Manufacturing	57,500	57,500	57,000	98,400	98,200	97,700	45,900	45,900	45,800
<b>SERVICE PROVIDING</b>	<b>587,700</b>	<b>585,900</b>	<b>572,900</b>	<b>653,300</b>	<b>651,300</b>	<b>645,500</b>	<b>685,700</b>	<b>682,800</b>	<b>673,900</b>
Private Service Providing	436,900	435,400	424,800	538,100	536,200	533,700	539,800	536,900	528,900
Wholesale Trade	37,400	37,300	35,100	38,100	38,000	37,400	27,300	27,300	27,300
Retail Trade	68,800	68,600	68,000	94,100	94,000	93,200	91,100	90,800	88,100
Food and Beverage Stores	14,100	14,100	13,400	15,000	15,000	15,100	14,800	14,700	14,400
General Merchandise Stores	11,800	11,700	11,200	20,500	20,500	19,200	17,900	17,700	17,300
Transportation, Warehousing, and Utilities	11,000	11,000	10,600	56,000	55,900	58,400	20,800	20,700	20,500
Information	20,900	20,900	20,400	17,400	17,300	17,600	21,600	21,500	22,400
Telecommunications	5,000	5,000	4,900	8,300	8,300	8,600	7,200	7,100	7,500
Financial Activities	40,300	40,300	39,900	45,800	45,700	44,900	62,200	62,100	61,700
Finance and Insurance	28,700	28,600	28,300	33,800	33,700	32,900	47,900	47,800	47,800
Credit Intermediation and Related Activities	11,800	11,800	11,500	19,000	18,900	18,500	21,200	21,200	21,400
Insurance Carriers and Related Activities	14,100	14,100	14,100	11,200	11,200	11,000	21,700	21,600	21,700
Professional and Business Services	91,300	91,300	88,400	86,500	86,300	83,400	91,400	91,500	89,500
Professional, Scientific, and Technical Services	44,800	45,100	43,900	29,300	29,500	28,700	35,300	35,500	34,200
Admin Support and Waste Mgmt and Remediation Svcs	42,900	42,900	40,700	52,700	51,700	50,800	50,700	50,100	48,700
Education and Health Services	69,200	69,400	68,200	86,600	86,400	85,600	105,000	105,000	102,500
Health Care and Social Assistance	60,800	60,500	59,500	76,500	76,300	75,100	91,200	91,000	88,700
Hospitals	15,400	15,400	14,900	21,900	22,000	21,700	19,900	19,900	19,800
Leisure and Hospitality	71,100	69,800	68,000	79,900	79,000	80,400	91,900	89,700	89,000
Accommodation and Food Services	62,200	61,300	59,800	69,700	69,300	69,300	79,100	78,300	77,200
Other Services	26,900	26,800	26,200	33,700	33,600	32,800	28,500	28,300	27,900
Government	150,800	150,500	148,100	115,200	115,100	111,800	145,900	145,900	145,000
Federal	10,900	11,200	10,500	15,300	15,400	15,100	29,000	28,900	28,800
State	68,000	68,600	66,900	9,800	9,900	10,000	16,400	16,400	16,100
Local	71,900	70,700	70,700	90,100	89,800	86,700	100,500	100,600	100,100

\*Estimates for the current month are preliminary. All estimates are subject to revision. The number of nonagricultural jobs in Texas is without reference to place of residence of workers. Estimates of the TWC are in cooperation with the Bureau of Labor Statistics, U.S. Department of Labor. \*\*Metropolitan Division (MD). The Dallas-Fort Worth-Arlington MSA is comprised of the Dallas-Plano-Irving MD and the Fort Worth-Arlington MD.



Texas Metropolitan Statistical Areas Nonagricultural Wage and Salary Employment (Not Seasonally Adjusted)

INDUSTRY	ABILENE			AMARILLO			BEAUMONT-PORT ARTHUR			BROWNSVILLE-HARLINGEN		
	May '05*	Apr '05	May '04	May '05*	Apr '05	May '04	May '05*	Apr '05	May '04	May '05*	Apr '05	May '04
TOTAL	64,800	64,700	63,100	109,600	109,500	108,700	157,000	157,600	155,400	120,000	119,700	117,000
Nat. Res., Mining, & Const.	4,400	4,400	3,900	7,500	7,400	7,200	13,900	14,200	13,900	4,700	4,700	4,800
Manufacturing	3,100	3,100	2,900	11,800	11,800	11,900	19,000	19,100	19,100	7,900	7,900	7,800
Wholesale Trade	2,500	2,500	2,400	5,700	5,700	5,600	4,300	4,400	4,100	3,600	3,600	3,600
Retail Trade	8,000	8,000	7,900	13,800	13,900	13,700	20,000	20,000	20,100	15,600	15,500	15,000
Trans., Ware., & Util.	1,700	1,700	1,700	3,500	3,500	3,600	6,300	6,300	6,700	4,200	4,200	4,200
Information	1,200	1,200	1,200	2,500	2,500	2,500	2,800	2,800	2,700	1,400	1,400	1,400
Financial Activities	3,100	3,100	3,100	6,000	6,000	6,100	7,000	6,800	6,100	4,900	4,800	4,600
Prof. & Business Services	4,200	4,200	4,200	8,200	8,200	7,900	13,000	13,100	12,600	7,500	7,600	7,300
Educ. & Health Services	13,900	13,900	13,600	15,000	15,000	15,000	23,400	23,500	22,900	26,700	26,600	26,000
Leisure & Hospitality	6,600	6,500	6,600	11,600	11,600	11,700	14,000	13,900	13,700	12,200	12,100	12,100
Other Services	3,300	3,300	3,000	4,900	4,900	4,700	6,000	6,000	6,100	4,100	4,100	3,600
Government	12,800	12,800	12,600	19,100	19,000	18,800	27,300	27,500	27,400	27,200	27,200	26,600
INDUSTRY	COLLEGE STATION-BRYAN			CORPUS CHRISTI			EL PASO			KILLEEN-TEMPLE-FORT HOOD		
TOTAL	89,800	89,500	88,300	168,100	168,500	167,400	261,300	260,200	258,100	115,200	114,900	112,000
Nat. Res., Mining, & Const.	6,000	6,000	5,900	16,700	17,100	15,300	11,700	11,600	11,500	6,200	6,000	5,700
Manufacturing	5,900	5,900	5,800	11,300	11,300	11,500	23,000	22,900	24,100	8,200	8,200	8,100
Wholesale Trade	1,500	1,500	1,500	5,400	5,400	5,200	10,000	9,900	10,200	3,600	3,500	3,600
Retail Trade	9,700	9,600	9,300	18,900	19,000	19,100	34,000	34,000	32,700	13,400	13,300	13,200
Trans., Ware., & Util.	1,000	1,000	1,000	5,300	5,300	5,500	12,800	12,900	12,600	3,900	3,900	4,000
Information	1,100	1,100	1,000	2,400	2,400	2,600	4,900	4,900	5,000	1,500	1,500	1,500
Financial Activities	3,600	3,600	3,500	8,000	7,900	7,800	11,900	11,900	11,300	5,900	5,800	5,800
Prof. & Business Services	5,400	5,400	5,300	15,500	15,800	16,000	27,600	27,700	26,900	8,900	9,100	8,300
Educ. & Health Services	8,900	8,900	8,700	26,000	25,900	25,700	30,900	30,800	29,900	16,300	16,300	16,000
Leisure & Hospitality	9,100	9,000	9,000	18,700	18,400	19,200	25,500	25,100	24,800	10,900	10,800	10,200
Other Services	2,800	2,800	2,700	7,200	7,100	6,900	8,000	7,900	7,700	4,800	4,800	4,500
Government	34,800	34,700	34,600	32,700	32,900	32,600	61,000	60,600	61,400	31,600	31,700	31,100
INDUSTRY	LAREDO			LONGVIEW			LUBBOCK			MCALLEN-EDINBURG-PHARR		
TOTAL	79,800	79,300	78,100	88,100	88,000	85,500	126,400	126,100	125,300	193,900	192,700	185,800
Nat. Res., Mining, & Const.	4,100	4,100	3,900	10,200	10,300	9,700	5,500	5,400	5,400	10,600	10,500	10,900
Manufacturing	1,700	1,700	1,600	11,200	11,200	10,900	5,400	5,400	5,400	8,400	8,300	9,200
Wholesale Trade	2,500	2,500	2,400	3,200	3,200	3,200	5,400	5,400	5,600	6,900	6,900	6,700
Retail Trade	10,700	10,700	11,100	11,400	11,300	10,900	15,300	15,400	15,100	27,700	27,500	26,900
Trans., Ware., & Util.	11,800	11,700	11,600	2,900	2,900	2,800	3,600	3,600	3,500	5,800	5,800	5,300
Information	700	600	700	1,900	1,900	1,800	5,900	5,900	5,700	3,100	3,000	2,600
Financial Activities	3,400	3,400	3,200	3,300	3,200	3,200	7,100	7,000	7,100	8,100	8,000	7,500
Prof. & Business Services	4,200	4,000	4,300	6,800	6,800	6,700	10,700	10,700	10,500	11,800	11,800	11,300
Educ. & Health Services	11,200	11,100	10,800	14,700	14,700	14,000	18,500	18,500	18,300	39,700	39,400	36,400
Leisure & Hospitality	8,100	8,100	8,100	7,400	7,400	7,500	14,500	14,200	14,800	17,100	17,000	16,800
Other Services	1,900	1,900	1,700	3,300	3,400	3,200	5,600	5,600	5,400	5,400	5,400	4,800
Government	19,500	19,500	18,700	11,800	11,700	11,600	28,900	29,000	28,500	49,300	49,100	47,400
INDUSTRY	MIDLAND			ODESSA			SAN ANGELO			SHERMAN-DENISON		
TOTAL	57,500	57,400	56,700	52,300	52,300	52,200	44,300	44,100	43,500	45,000	44,900	43,700
Nat. Res., Mining, & Const.	10,400	10,500	10,600	6,700	6,700	6,900	2,900	2,900	2,900	3,000	3,000	2,900
Manufacturing	2,100	2,100	2,000	4,000	4,000	4,000	3,800	3,800	3,800	6,600	6,600	6,400
Wholesale Trade	2,600	2,500	2,500	3,900	3,900	3,800	1,400	1,400	1,400	900	900	900
Retail Trade	6,400	6,400	6,400	6,300	6,300	6,300	5,200	5,200	5,200	6,300	6,300	6,200
Trans., Ware., & Util.	1,700	1,700	1,600	1,700	1,700	1,600	800	800	800	1,100	1,100	1,200
Information	1,800	1,800	1,800	600	600	600	1,800	1,800	1,800	600	600	500
Financial Activities	3,100	3,100	3,000	2,300	2,300	2,300	1,900	1,900	1,900	2,800	2,800	2,800
Prof. & Business Services	6,100	6,100	5,900	3,700	3,700	3,600	3,500	3,500	3,300	2,700	2,700	2,600
Educ. & Health Services	6,400	6,400	6,100	5,600	5,600	5,300	7,400	7,300	7,500	8,600	8,600	8,200
Leisure & Hospitality	6,000	5,800	5,800	5,100	5,100	5,300	4,400	4,300	4,300	4,400	4,300	4,200
Other Services	2,400	2,400	2,300	2,900	2,900	2,800	2,000	1,900	1,800	1,700	1,700	1,600
Government	8,500	8,600	8,700	9,500	9,500	9,700	9,200	9,300	8,800	6,300	6,300	6,200
INDUSTRY	TEXARKANA			TYLER			VICTORIA			WACO		
TOTAL	55,000	54,900	53,900	88,900	88,900	87,100	48,100	47,800	47,200	103,400	103,800	102,600
Nat. Res., Mining, & Const.	2,600	2,500	2,500	5,000	5,000	4,800	6,200	6,200	6,200	5,700	5,700	5,600
Manufacturing	5,400	5,400	5,500	9,600	9,600	9,600	5,600	5,600	5,700	13,300	13,400	13,500
Wholesale Trade	2,400	2,400	2,400	3,700	3,700	3,700	1,800	1,800	1,700	3,800	3,800	3,900
Retail Trade	7,100	7,000	7,000	12,100	12,000	12,000	6,600	6,400	6,200	10,900	11,000	10,900
Trans., Ware., & Util.	2,300	2,300	2,300	3,300	3,300	3,100	1,500	1,500	1,500	2,900	2,900	2,900
Information	500	500	500	2,000	2,000	1,900	700	700	700	1,900	1,900	1,800
Financial Activities	2,200	2,200	2,200	4,200	4,200	3,900	1,900	1,900	1,900	6,200	6,200	6,200
Prof. & Business Services	3,200	3,200	3,500	6,600	6,700	6,900	2,800	2,800	2,700	8,500	8,700	8,500
Educ. & Health Services	9,000	9,000	8,800	17,500	17,500	17,000	6,400	6,400	6,100	18,700	19,200	17,900
Leisure & Hospitality	5,300	5,300	5,200	8,300	8,100	8,100	4,200	4,100	4,200	9,400	9,100	9,400
Other Services	2,400	2,400	2,300	3,900	3,900	3,800	1,800	1,800	1,700	4,700	4,600	4,600
Government	12,600	12,700	11,700	12,700	12,900	12,300	8,600	8,600	8,600	17,400	17,300	17,400
INDUSTRY	WICHITA FALLS											
TOTAL	61,800	61,800	60,700									
Nat. Res., Mining, & Const.	3,300	3,300	3,300									
Manufacturing	7,600	7,600	7,300									
Wholesale Trade	1,800	1,800	1,800									
Retail Trade	7,800	7,800	7,700									
Trans., Ware., & Util.	1,400	1,400	1,300									
Information	1,500	1,500	1,600									
Financial Activities	2,300	2,400	2,300									
Prof. & Business Services	3,200	3,200	3,300									
Educ. & Health Services	9,900	9,900	9,700									
Leisure & Hospitality	5,900	5,800	5,600									
Other Services	3,500	3,500	3,200									
Government	13,600	13,600	13,600									

Estimates for the current month are preliminary. All estimates are subject to revision. The number of nonagricultural jobs in each MSA is without reference to place of residence of workers. Estimates of the TWC are in cooperation with the Bureau of Labor Statistics, U.S. Department of Labor.

Beginning with January 2005 estimates, definitions of the MSAs were updated to reflect the 2000 Census-based configurations. Please see [www.tracer2.com](http://www.tracer2.com) for details on these changes.



## Highlights of the Texas Labor Force (Not Seasonally Adjusted)

by Bryce Bayles

The Texas jobless rate remained unchanged for the second straight month, holding at 5.3 percent in May—the lowest rate since July 2001. Typically, the jobless rate drops by an average of one-tenth of a percentage point between April and May. May's rate was six-tenths of a percentage point lower than last year's rate of 5.9 percent. Nationally, the United States' trend mirrored that of Texas, holding at 4.9 percent for a second consecutive month—the lowest rate since September 2001. The U.S. rate was four-tenths of a percentage point below last May's rate of 5.3 percent.

➤ The number of jobholders in Texas rose to a record high in May, growing by 6,300 to 10,578,500. This was the first gain for the month of May since 2002; the previous two years have averaged a loss of 20,600 jobholders. May's increase was partly aided by seasonal hiring in the Leisure & Hospitality industry.

➤ Though the number of unemployed rose for the first time in three months, from 589,600 in April to 596,900 in May, this was the lowest level for the month since 2001. May's gain of 7,300 was smaller than the average April-to-May increase of 10,000. In addition, May's level was 49,700 below last year's level of 646,600. Unemployment has dropped by 90,200 job seekers since the beginning of this year.

➤ The number of people receiving unemployment benefits declined for the fourth straight month, decreasing by 2,500 to 94,600 in May. Of the twenty-five MSAs, only Tyler, Waco, Killeen-Temple-Fort Hood, Odessa, and Texarkana recorded minimal gains. The remaining MSAs registered decreases in claims over the month. The Dallas-Fort Worth-Arlington MSA recorded the largest over-the-month reduction with 1,800 fewer claims. The largest claims reductions within the twenty-eight WDAs occurred in the Lower Rio Grande Valley (-600), Upper Rio Grande (-500), and Dallas (-400) WDAs. The Gulf Coast WDA recorded the largest increase for the month with 700 more claims.

**Hours and Earnings for Texas  
and Selected Texas Metropolitan Statistical Areas & Metro Divisions**

Area	Average Weekly Earnings			Average Weekly Hours			Average Hourly Earnings		
	May '05	Apr. '05	May '04	May '05	Apr. '05	May '04	May '05	Apr. '05	May '04
<b>Texas</b>									
Manufacturing	\$557.00	\$555.19	\$561.40	39.9	39.6	40.1	\$13.96	\$14.02	\$14.00
Durable Goods	\$560.35	\$553.09	\$558.49	41.6	41.0	41.4	\$13.47	\$13.49	\$13.49
Nondurable Goods	\$550.93	\$560.62	\$565.40	37.2	37.6	38.1	\$14.81	\$14.91	\$14.84
<b>Dallas-Ft. Worth-Arlington MSA</b>									
Manufacturing	\$601.13	\$595.00	\$579.85	39.6	39.3	39.1	\$15.18	\$15.14	\$14.83
Durable Goods	\$675.54	\$661.78	\$642.76	41.7	40.8	40.4	\$16.20	\$16.22	\$15.91
Nondurable Goods	\$465.76	\$473.60	\$468.83	35.8	36.6	36.8	\$13.01	\$12.94	\$12.74
<b>Houston-Baytown-Sugar Land MSA</b>									
Manufacturing	\$721.34	\$731.95	\$696.40	40.8	41.4	40.0	\$17.68	\$17.68	\$17.41
Durable Goods	\$607.37	\$604.75	\$578.24	40.9	41.0	40.1	\$14.85	\$14.75	\$14.42
Nondurable Goods	\$882.78	\$912.58	\$861.27	40.7	41.9	39.8	\$21.69	\$21.78	\$21.64
<b>San Antonio MSA</b>									
Manufacturing	\$412.83	\$406.67	\$425.49	38.8	37.9	39.0	\$10.64	\$10.73	\$10.91
Durable Goods	\$437.63	\$425.86	\$426.89	41.6	40.1	39.6	\$10.52	\$10.62	\$10.78
Nondurable Goods	\$385.20	\$385.89	\$425.43	35.7	35.5	38.5	\$10.79	\$10.87	\$11.05
<b>Dallas-Plano-Irving MD*</b>									
Manufacturing	\$516.87	\$510.51	\$517.40	37.7	37.4	38.1	\$13.71	\$13.65	\$13.58
Durable Goods	\$546.55	\$536.71	\$546.00	38.9	38.2	39.0	\$14.05	\$14.05	\$14.00
Nondurable Goods	\$468.74	\$470.60	\$471.23	35.7	36.2	36.7	\$13.13	\$13.00	\$12.84
<b>Ft. Worth-Arlington MD*</b>									
Manufacturing	\$761.18	\$757.61	\$706.02	43.2	42.9	41.0	\$17.62	\$17.66	\$17.22
Durable Goods	\$883.28	\$867.15	\$821.54	46.1	45.0	42.9	\$19.16	\$19.27	\$19.15
Nondurable Goods	\$456.29	\$482.18	\$460.88	35.9	37.7	36.9	\$12.71	\$12.79	\$12.49

\*Estimates for the current month are preliminary. All estimates are subject to revision. Estimates reflect actual (not seasonally adjusted) data. Estimates of the TWC are in cooperation with the Bureau of Labor Statistics, U.S. Department of Labor. The Dallas-Fort Worth-Arlington MSA is comprised of the Dallas-Plano-Irving Metropolitan Division (MD) and the Fort Worth-Arlington MD.



## Texas Employment Projections 2002-2012

by Dorothy Gattis

The Texas employment projections for the 2002-2012 timeframe comprise considerable detail about the changes in employment for nearly 800 occupations and 300 industries. Employment estimates are developed for nonfarm wage and salary, agricultural, self-employed, and private household workers. Information is available for Texas and the 28 Workforce Development Areas (WDAs).

Texas is expected to add over 1.8 million jobs over the 2002-2012 period, rising to 12.3 million jobs overall. Compared to the U.S. job growth rate of 14.8 percent, Texas will grow by 17.6 percent. In addition to newly created jobs, another 2.4 million existing jobs will need to be filled as experienced workers leave their jobs. This need to fill positions happens for a variety of reasons, most significant of which are career change and retirement. Texas will continue to need people with a wide variety of skills, interest, and educational backgrounds.

### INDUSTRY PROJECTIONS:

From 2002 to 2012, the top growing industry sectors in Texas are anticipated to be Health and Social Assistance Services, Educational Services, and Accommodation and Food Services, which experience over 47.3 percent of the overall growth. The employment increases in these industries will reflect the continuing movement towards a service-based economy and the demands of the diverse population in Texas. All but one of the top 20 industries adding the most jobs by 2012 are found in the service-producing industries. These industries make up nearly 58.8 percent of job creation. Despite the fact that the service sector employs a large number of entry level and part-time positions, it still maintains an above average percent of all professional and technical workers in the state. These occupations will generate 27.5 percent of all new jobs within the service sector by 2012.

#### Top 20 Fastest Growing Industries in Texas for 2002 to 2012:

Elementary & Secondary Schools	Religious Organizations
Full-Service Restaurants	Computer Systems Design Services
Limited-Service Eating Places	Building Equipment Contractors
Employment Services	Management Consulting Services
General Hospital	Services to Building
Home Health Care Services	Nursing Care Facilities
Local Government	Automobile Dealers
Offices of Physicians	Other General Merchandise Stores
Colleges & Universities	Grocery Stores
Child Day Care Services	State Government

Although manufacturing overall has lost jobs in recent years, this sector is projected to create over 23,000 more jobs in 2012 than in 2002. In 2002, employment was 947,150 and is expected to reach 970,550 by 2012. The fastest growing manufacturing industries are transportation equipment (16.4%), furniture manufacturing (12.9%), and nonmetallic mineral products (9.9%). On the flip side, declining manufacturing industries are apparels (-47.5%), leather products (-15.6%), and paper manufacturing (-9.0%).

### OCCUPATIONAL PROJECTIONS:

During the 2002-2012 period, Texas is expected to have close to 4.3 million job openings. Over 1.8 million of these openings will be newly created jobs. The remaining 2.4 million openings will occur due to deaths, retirements, and other permanent exits from existing jobs. The job openings for registered nurses are linked to growth in Texas' population over age 45 and their increasing demand for health services. Occupations within food service industries such as food preparation/serving workers and waiters & waitresses have higher job openings due to the large number of individuals leaving these occupations for higher paying jobs. These occupations play an important role for low-skilled individuals just entering the labor force; perhaps portals to the labor force.

#### The Ten Occupations Expected to Have the Most Job Openings are:

- Retail Salespersons
- Cashiers
- Combined Food Preparation/Serving Workers, Including Fast Food
- Waiters & Waitresses
- Registered Nurses
- General Office Clerks
- Child Care Workers
- Elementary School Teachers
- Customer Service Representatives
- General & Operations Managers

Employment in the two largest major occupational groups in 2002, Service Occupations and Professional and Related Occupations are projected to grow the fastest and are expected to add the most jobs between 2002 and 2012. Of the top twenty-five growing occupations, the majority will be found in these two major occupational groups. The occupations adding the most jobs by 2012 are combined food preparation & serving workers, retail salespersons, and registered nurses.

In general, fast growing occupations can offer promising employment opportunities but may not provide the high number of job openings in comparison with occupations adding the most

*Continued on page 10*



Continued from page 9

jobs. Twenty of the top twenty-five fastest growing occupations are either health-related or education-related occupations. The fastest growing occupations for the ten-year period are medical assistants (62.3%), medical records & health information technicians (55.3%), and physician assistants (52.8%).

Employment by Major Occupational Group, 2002 and Projected 2012				
	Annual Employment		Change	
	2002	2012	Number	Percent
<b>Total, All Occupations</b>	<b>10,445,250</b>	<b>12,284,150</b>	<b>1,838,900</b>	<b>17.6</b>
Management, Business, & Financial Occupations	1,143,950	1,340,150	196,200	17.2
Professional & Related Occupations	1,935,600	2,455,050	519,450	26.8
Service Occupations	1,987,850	2,509,250	521,400	26.2
Sales & Related Occupations	1,142,350	1,304,250	161,900	14.2
Office & Administrative Support Occupations	1,694,400	1,842,450	148,050	8.7
Farming, Fishing, & Forestry Occupations	115,500	123,300	7,800	6.8
Construction & Extraction Occupations	573,750	667,700	93,950	16.4
Installation, Maintenance, & Repair Occupations	450,100	521,500	71,400	15.9
Production Occupations	701,350	738,250	36,900	5.3
Transportation & Material Moving Occupations	700,450	782,200	81,750	11.7

Detailed 2002-2012 industry and occupation employment projections for Texas and the 28 Workforce Development Areas are now available at <http://www.tracer2.com>. These projections replace previously published industrial and occupational projections due mainly to converting to the North American

Industrial Classification System. The data are based on updated industrial trends, occupational staffing patterns, technological changes, and national projections. For further details, refer to the methodology link on <http://www.tracer2.com>'s The Future web page. Also found on the website are the Bureau of Labor Statistics' (BLS) preferred educational requirements for each occupation.

**NOTICE REGARDING SUB-STATE LABOR FORCE ESTIMATES**

The Bureau of Labor Statistics (BLS) recently notified all states that some Local Area Unemployment Statistics (LAUS) inputs previously provided by the BLS were in error. Due to this, the Labor Market & Career Information Department (LMCI) has been required to re-calculate all sub-state (metropolitan statistical area, workforce development area, county, and city) labor force estimates for 2000 through 2005. These estimates include the civilian labor force, number employed, number unemployed, and the unemployment rate. Statewide estimates for these years are NOT affected and will not be re-calculated. This error affects all states, not just Texas.

LMCI is currently working with the BLS to re-calculate all sub-state labor force estimates. Until these estimates have been reviewed and approved by the BLS, the labor force estimates for all of Texas' sub-state areas have been removed from LMCI's website and publications. At this time, we expect corrected data to be available in July 2005.

We apologize for this inconvenience.

Please see the LMCI website at [www.tracer2.com](http://www.tracer2.com) for updates regarding these changes.



## GLOSSARY OF LABOR MARKET TERMS

**Actual or Not Seasonally Adjusted** - This term is used to describe data series not subject to the seasonal adjustment process. In other words, the effects of regular, or seasonal, patterns have not been removed from these series.

**Civilian Labor Force (CLF)** - Is that portion of the population age 16 and older who are employed or unemployed. To be considered unemployed, a person has to be not working but willing and able to work and actively seeking work.

**Consumer Price Index (CPI)** - Is a measure of the average change over time in the prices paid by urban consumers for a market basket of consumer goods and services. The CPI provides a way for consumers to compare what the market basket of goods and services costs this month with what the same market basket cost a month or a year ago.

**Current Employment Statistics (CES)** - A monthly survey of nonfarm business establishments used to collect wage and salary employment, workers hours, and payroll, by industry and area. It is sometimes known as Nonagricultural Employment.

**Employed (Emp)** - Persons 16 years and over in the civilian noninstitutional population who, during the reference week, (a) did any work at all (at least 1 hour) as paid employees, worked in their own business, profession, or on their own farm, or worked 15 hours or more as unpaid workers in an enterprise operated by a member of the family, and (b) all those who were not working but who had jobs or businesses from which they were temporarily absent because of vacation, illness, bad weather, childcare problems, maternity or paternity leave, labor-management dispute, job training, or other family or personal reasons, whether or not they were paid for the time off or were seeking other jobs. Each employed person is counted only once, even if he or she holds more than one job.

**Local Area Unemployment Statistics (LAUS)** - The Federal/State cooperative program which produces employment and unemployment

estimates for states and local areas. These estimates are developed by State Employment Security Agencies in accordance with Bureau of Labor Statistics (BLS) definitions and procedures. Data is used for planning and budgetary purposes as an indication of need for employment and training services programs. Estimates are also used to allocate Federal funds.

**Metropolitan Division (MD)** - A Metropolitan Statistical Area which contains a single core with a population of 2.5 million or more may be subdivided into smaller groupings of counties referred to as Metropolitan Divisions. Titles of Metropolitan Divisions are typically based on principal city names. Texas has two Metropolitan Divisions, the Dallas-Plano-Irving MD and the Fort Worth-Arlington MD, which combine to form the Dallas-Fort Worth-Arlington MSA.

**Metropolitan Statistical Area (MSA)** - A geographic area that contains at least one urbanized area of 50,000 or more population plus adjacent territory that has a high degree of social and economic integration with the core urban area. An MSA in Texas is made up of one or more counties. The U.S. Office of Management and Budget defines metropolitan areas according to published standards that are applied to Census Bureau data. Texas has 25 MSAs and two Metropolitan Divisions (MD).

**Seasonally Adjusted (SA)** - Seasonal adjustment removes the effects of events that follow a more or less regular pattern each year. These adjustments make it easier to observe the cyclical and other non-seasonal movements in a data series.

**Unemployed (Unemp)** - Persons 16 years and over who had no employment during the reference week, were available for work, except for temporary illness, and had made specific efforts to find employment sometime during the 4-week period ending with the reference week. Persons who were waiting to be recalled to a job from which they had been laid off need not have been looking for work to be classified as unemployed.

## “HAPPENINGS AROUND THE STATE”

### New Hospital at Base to Add Jobs

SAN ANTONIO, Tex (San Antonio Express-News—Travis E. Poling)—Southeast Baptist Hospital will be replaced by a new hospital at Brooks City-Base. The move is a shift from the Baptist Health System's previous planned expansion of the hospital at its current site on East Southcross Boulevard.

The medical facility, which is expected to add 300 new jobs, is scheduled to open by early 2008. This project could be the anchor for a new medical complex for the city, which is redeveloping the former Brooks AFB. So far at the Brooks location, DPT Laboratories has broken ground for a new lab and manufacturing plant, and about 60 acres have been sold for a retail development that will include a WalMart. A new campus for the University of the Incarnate Word pharmacy school could open in 2006.

### Company Shifting Jobs to Plano

DALLAS, Tex (Dallas Business Journal)—Consumer lender Capital One Financial Corp. says it will move part of its auto financing operation and about 200 jobs from San Diego, California to Plano.

Capital One will close its Internet auto finance operation in San Diego and eliminate about 290 jobs there by early 2006. The company will move that work to a similar operation in Plano, with California employees being given the option to transfer to the suburb north of Dallas.

### Outdoor Superstore Opens in Fort Worth

FORT WORTH, Tex (Fort Worth Business Press)—Cabela's outdoors/hunting superstore is now open in Fort Worth. The opening day for the 230,000 square-foot, \$43.1 million store was on May 26. The store will create 600 new jobs once it's fully staffed.

Over 5 million visitors are expected to be drawn to the store's 50-acre site at Texas Highway 170 and Interstate 35W. Cabela's spokesman John Castillo says, "On any given day of business, 50 percent of our customers have driven from farther away than 100 miles." Unique features in the store include a 55,000-gallon aquarium, a two-story mountain, and wild life museums.

### Military Clothing Manufacturer Hiring in El Paso

EL PASO, Tex (El Paso Times)—Five hundred manufacturing jobs will be added to the El Paso economy with the Sahara Companies' expansion into the former Home Base building on the East Side of El Paso. Ernie Lopez, chief operating officer, says the expansion results from new federal contracts for manufacturing military clothing.

Sahara Companies is part of the National Center for the Employment of the Disabled. Lopez says, "We need employees with experience in all aspects of the manufacturing industry—sewing operators, mechanics, instructors, supervisors, managers. We even need maintenance and cafeteria personnel." Lopez adds the new jobs were not necessarily for the disabled. He said the disabled would be given preference but that the jobs were open to all.



## INDICATORS

### Texas Unemployment Rate

Actual (Not Seasonally Adjusted)			Seasonally Adjusted		
MAY	2005	5.3%	MAY	2005	5.5%
APR	2005	5.3%	APR	2005	5.5%
MAY	2004	5.9%	MAY	2004	6.1%

### U.S. Unemployment Rate

Actual (Not Seasonally Adjusted)			Seasonally Adjusted		
MAY	2005	4.9%	MAY	2005	5.1%
APR	2005	4.9%	APR	2005	5.2%
MAY	2004	5.3%	MAY	2004	5.6%

### Texas Nonagricultural Wage & Salary Employment

Not Seasonally Adjusted			Seasonally Adjusted		
MAY	2005	9,625,400	MAY	2005	9,580,400
APR	2005	9,592,600	APR	2005	9,574,400
MAY	2004	9,505,800	MAY	2004	9,463,000
OTM Change		32,800	OTM Change		6,000
OTY Change		119,600	OTY Change		117,400

### Unemployment Insurance Claims

Initial Claims			Continued Claims		
MAY	2005	74,448	MAY	2005	540,864
APR	2005	68,504	APR	2005	491,642
MAY	2004	76,375	MAY	2004	684,443

### Consumer Price Index (CPI)

#### Annual Change

U.S.	MAY 2005	2.8%
Dallas-Fort Worth	MAY 2005	2.5%
Houston-Galveston	APR 2005	3.1%

### Help Wanted Index - US

APR	2005	39.0
MAR	2005	39.0
APR	2004	38.0

### West Texas Intermediate Crude Oil (\$/barrel)

MAY	2005	\$ 49.83	OTM Change	-\$ 3.21
APR	2005	\$ 53.04	OTY Change	\$ 9.55
MAY	2004	\$ 40.28		

## Texas Labor Market Review

### Labor Market & Career Information



The Texas Labor Market Review (TLMR) is published monthly by the Labor Market & Career Information Department of the Texas Workforce Commission. Material in the TLMR is not copyrighted and may be reproduced. The TWC would appreciate credit for the material used and a copy of the reprint. For a free subscription to the TLMR, or to change your mailing address, contact the LMCI Department.

Phone (512) 491-4922 Toll Free 1-866-938-4444  
 Fax (512) 491-4904  
 Website www.tracer2.com  
 E-mail lmi@twc.state.tx.us  
 Fax-on-demand system (512) 491-4939

You can view the TLMR on-line by going to [www.tracer2.com](http://www.tracer2.com) and selecting "LMI Publications".

Mark Hughes, LMCI Director

#### TLMR Staff:

Clayton Griffis, Editor

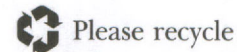
Rachel Tello Sanchez, Layout and Design

Contributors: Phil Arnold, Honor Byrd, Robert Crawley, Spencer Franklin, Larbi Hanni, Nathan Jones, Frederic Lewis, Becky Parker, Roger Schiller, Mariana Vega, Betty Whalen, and Stanley Whiting.

Copies of this publication have been distributed in compliance with the State Depository Law, and are available for public use through the Texas State Publication Depository Program at the Texas State Library and other state depository libraries.

Equal Opportunity Employer/Programs. Auxiliary aids and services are available, on request, to individuals with disabilities.

Contact Relay Texas @ 7-1-1



PRSRT STD  
 Postage and Fees Paid  
 Texas Workforce Commission  
 Permit No. G-12

ADDRESS SERVICE REQUESTED  
 PENALTY FOR PRIVATE USE \$300  
 OFFICIAL BUSINESS

LMCI DEPARTMENT  
 TEXAS WORKFORCE COMMISSION  
 101 E 15TH ST STE 103 A2  
 AUSTIN TX 78778-0001