

W 2200.6 - ~~2007~~ 2007/08

IN THIS ISSUE

Texas Nonagricultural Wage & Salary
 Employment (Seasonally Adjusted) 1
 Texas & U.S. Unemployment Rates 2
 Texas Nonagricultural Wage & Salary
 Employment (Not Seasonally Adjusted) 3
 MSA Nonagricultural Wage & Salary
 Employment (Not Seasonally Adjusted) 5
 Highlights of the Texas Labor Force 8
 County Unemployment Rates 9
 City & WDA Unemployment Rates 10
 Hours and Earnings 10
 Glossary 11
 "Happenings Around the State" 11
 Indicators 12

A MONTHLY NEWSLETTER OF THE TEXAS WORKFORCE COMMISSION

TEXAS

LABOR MARKET REVIEW

AUGUST 2007

Texas Nonagricultural Wage and Salary Employment (Seasonally Adjusted)

Total Nonagricultural Employment posted a gain of 29,400 jobs in July for an estimate of 10,305,500. This increase was considerably higher than the five-year and ten-year average July gains of 7,700 and 7,800 jobs, respectively, and was the third largest monthly increase this year. Eight of eleven major industries gained jobs over the month. A total of 141,000 jobs have been added to Total Nonagricultural Employment since the beginning of 2007, while 265,900 jobs were added since July 2006. The annual growth rate for the month of July was 2.6 percent, up from June's rate of 2.1 percent.

automotive repair along with computer and office machine repair and appliance repair and maintenance. Barber shops, funeral homes and business associations are also listed in this major industry.

Having gained 6,100 positions in June, Leisure and Hospitality employment gained 3,100 jobs in July. This was the eleventh month of payroll expansion in the last 12 months. The annual growth rate rose from 4.2 percent in June to 4.6 percent in July, an increase of 43,100 positions since July 2006.

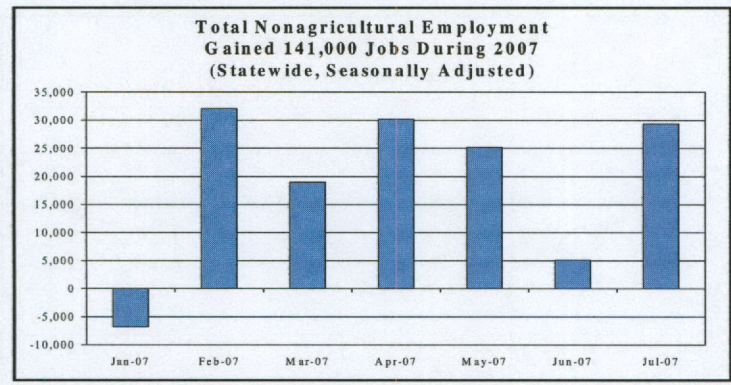
Trade, Transportation and Utilities employment added 2,700 jobs in July. This monthly gain was slightly above the five-year average July increase of 1,500, and also more than the ten-year average gain of 2,200. A total of 26,800 jobs have been added since July 2006 for an annual growth rate of 1.3 percent.

Natural Resources and Mining employment increased by 2,300 jobs in July, following a gain of 600 positions in June. Since January, this industry added 8,600 jobs. The annual growth rate improved to 9.8 percent for July, up six-tenths of a percentage point since June. Employment in Natural Resources and Mining has expanded by 18,200 jobs since July 2006.

Education and Health Services employment increased by 1,700 positions in July, following a gain of 4,300 jobs in June. This was the sixth consecutive month of payroll expansion. The annual growth was 2.6 percent in July, bringing the number of positions added in this industry to 31,300 jobs since July 2006. Some of the businesses that make up this major industry are private colleges and universities along with business schools and technical and trade schools. Hospitals, nursing care facilities and child day care services are also part of this industry.

Following a gain of 1,000 positions in June, employment in Information increased by 800 jobs in July. This was the third consecutive month of payroll growth for the industry. The annual growth rate rose from -0.4 percent in June to 0.6 percent in July, an increase of 1,300 jobs since July 2006.

Employment in Financial Activities declined minimally in July after eight straight months of job gains. Despite the monthly drop, the annual growth rate increased from 1.6 percent in June to 2.4 percent in July. A total of 15,100 jobs were added in Financial Activities since July 2006.



Government employment grew by 11,000 jobs in July, following a decrease of 3,000 positions in June. The over-the-month job gain was the largest July expansion in Government since 1996. The annual growth rate reached 2.1 percent in July, the highest growth rate recorded since February 2003. A total of 35,600 jobs have been added in Government since July 2006.

Professional and Business Services employment posted an increase of 5,900 positions in July. This was the sixth monthly employment growth this year. The annual growth rate was 5.0 percent, a gain of nine-tenths of a percentage point since June. This industry gained 61,400 positions since July 2006. Some of the businesses that make up this major industry are temporary help services and employment placement agencies along with offices of lawyers and tax preparation services. Janitorial services, landscaping services and travel agencies are also part of this industry.

Following a gain of 500 jobs in June, Other Services employment increased by 4,900 jobs in July. This was the fourth consecutive month of employment growth. The annual growth rate rose from 0.7 percent in June to 3.1 percent in July. This industry gained 10,600 positions since July 2006. The Other Services industry includes

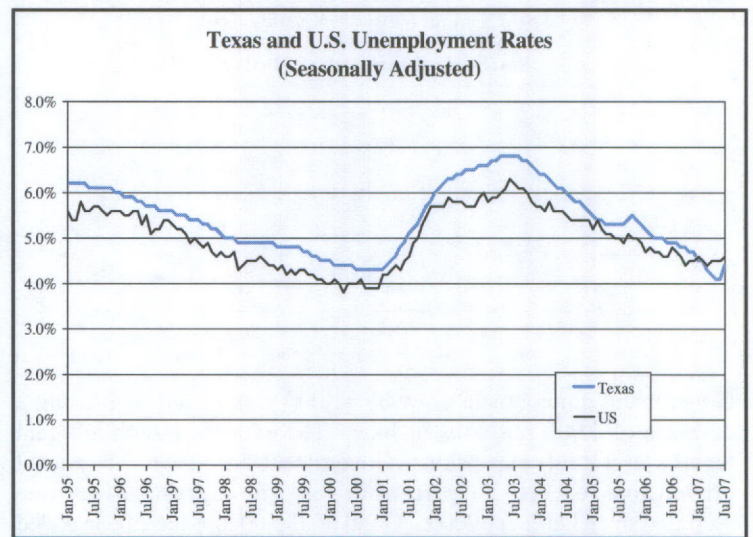
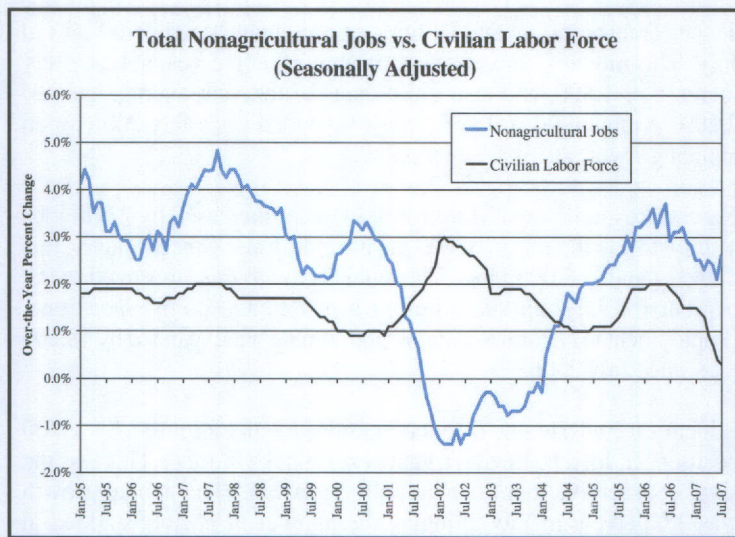
TEXAS NONAGRICULTURAL WAGE AND SALARY EMPLOYMENT
SEASONALLY ADJUSTED⁺

INDUSTRY TITLE	July 2007*	June 2007	July 2006	June '07 to July '07		July '06 to July '07	
				Absolute Change	Percent Change	Absolute Change	Percent Change
TOTAL NONAG. W&S EMPLOYMENT	10,305,500	10,276,100	10,039,600	29,400	0.3	265,900	2.6
GOODS PRODUCING							
Natural Resources & Mining	204,200	201,900	186,000	2,300	1.1	18,200	9.8
Construction	622,900	625,200	600,800	-2,300	-0.4	22,100	3.7
Manufacturing	929,700	930,300	929,300	-600	-0.1	400	0.0
SERVICE PROVIDING							
Trade, Transportation, & Utilities	2,069,400	2,066,700	2,042,600	2,700	0.1	26,800	1.3
Information	223,100	222,300	221,800	800	0.4	1,300	0.6
Financial Activities	638,500	638,600	623,400	-100	0.0	15,100	2.4
Professional & Business Services	1,284,300	1,278,400	1,222,900	5,900	0.5	61,400	5.0
Education & Health Services	1,247,500	1,245,800	1,216,200	1,700	0.1	31,300	2.6
Leisure & Hospitality	984,100	981,000	941,000	3,100	0.3	43,100	4.6
Other Services	354,700	349,800	344,100	4,900	1.4	10,600	3.1
Government	1,747,100	1,736,100	1,711,500	11,000	0.6	35,600	2.1

Note: The number of nonagricultural jobs in Texas is without reference to place of residence of workers. Total Nonagricultural employment is additive by summing the individual sectors.

*Estimates for the current month are preliminary. All estimates are subject to revision.

+All elements of seasonality are factored out to achieve an estimate which reflects the basic underlying trend.



TEXAS AND U.S. CIVILIAN LABOR FORCE ESTIMATES

		TEXAS*				UNITED STATES**			
		CLF	Employment	Unemp.	Rate	CLF	Employment	Unemp.	Rate
Not Seasonally Adjusted									
July	2007	11,643,000	11,089,400	553,600	4.8	154,871,000	147,315,000	7,556,000	4.9
June	2007	11,617,700	11,085,300	532,400	4.6	154,252,000	146,958,000	7,295,000	4.7
July	2006	11,586,000	10,959,800	626,200	5.4	153,208,000	145,606,000	7,602,000	5.0
Seasonally Adjusted									
July	2007	11,529,400	11,016,500	512,900	4.4	153,231,000	146,110,000	7,121,000	4.6
June	2007	11,522,800	11,047,300	475,500	4.1	153,072,000	146,140,000	6,933,000	4.5
July	2006	11,499,500	10,933,800	565,700	4.9	151,558,000	144,330,000	7,228,000	4.8

Note: Only the actual series estimates for Texas and the U.S. are comparable to sub-state estimates. All estimates are subject to revision.

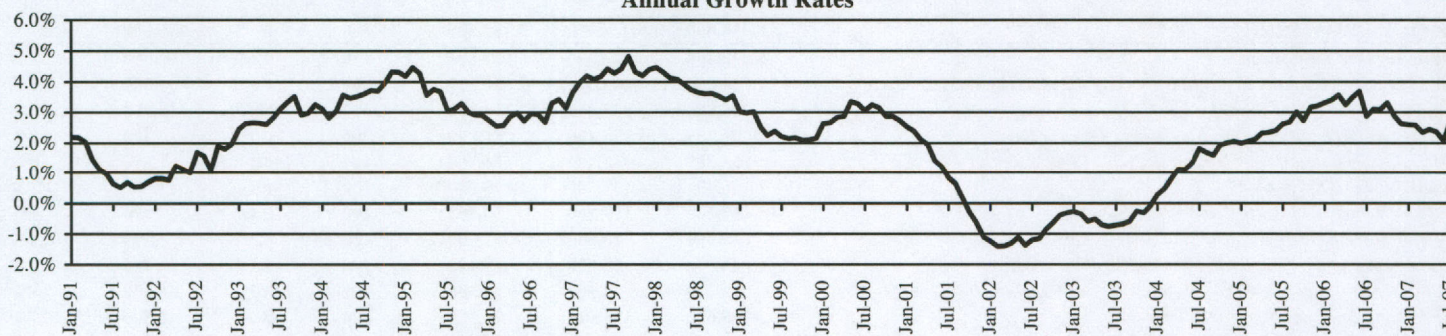
In seasonally adjusted estimates, all elements of seasonality are factored out to achieve an estimate which reflects the basic underlying trend.

*Source - Labor Market and Career Information Department, Texas Workforce Commission (model-based methodology)

**Source - Bureau of Labor Statistics, U.S. Department of Labor (Current Population Survey)

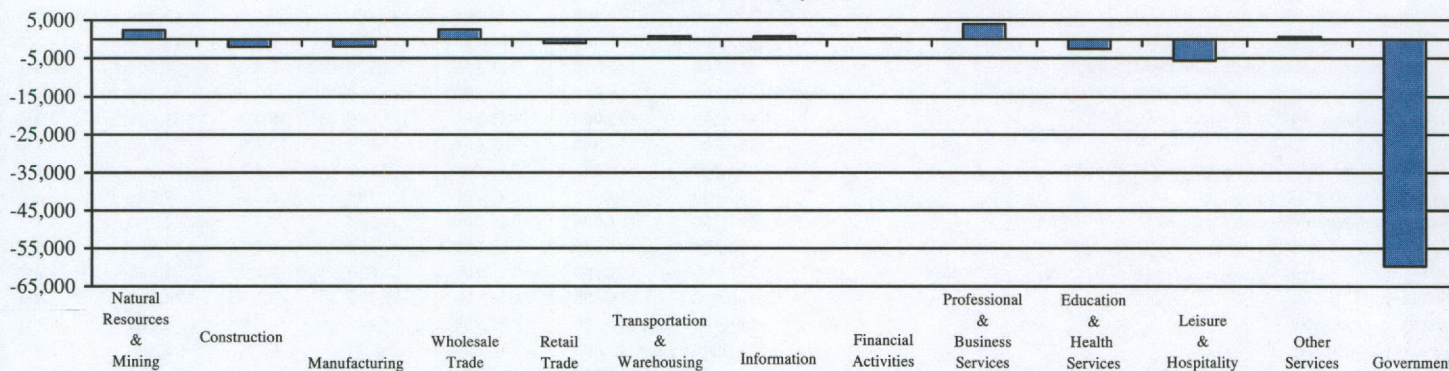
Texas Nonagricultural Wage and Salary Employment (Not Seasonally Adjusted)

Annual Growth Rates



	July '07*	June '07	July '06	June '07 to July '07 Change	% Change	July '06 to July '07 Change	% Change
TOTAL NONFARM	10,243,700	10,305,200	9,976,700	-61,500	-0.6%	267,000	2.7%
TOTAL PRIVATE (total nonfarm less government)	8,587,100	8,588,900	8,356,100	-1,800	0.0%	231,000	2.8%
GOODS PRODUCING	1,764,900	1,766,600	1,724,500	-1,700	-0.1%	40,400	2.3%
Natural Resources and Mining (NAICS 1133 [logging], NAICS 21)	205,100	202,700	187,000	2,400	1.2%	18,100	9.7%
<i>Oil and Gas Extraction (NAICS 211)</i>	74,100	73,000	71,500	1,100	1.5%	2,600	3.6%
<i>Support Activities for Mining (NAICS 213)</i>	113,300	111,900	104,000	1,400	1.3%	9,300	8.9%
Construction (NAICS 23)	628,900	631,000	605,600	-2,100	-0.3%	23,300	3.8%
<i>Construction of Buildings (NAICS 236)</i>	147,100	149,100	146,900	-2,000	-1.3%	200	0.1%
<i>Heavy and Civil Engineering Construction (NAICS 237)</i>	119,200	120,700	113,900	-1,500	-1.2%	5,300	4.7%
<i>Specialty Trade Contractors (NAICS 238)</i>	362,600	361,200	344,800	1,400	0.4%	17,800	5.2%
Manufacturing (NAICS 31-33)	930,900	932,900	931,900	-2,000	-0.2%	-1,000	-0.1%
Durable Goods	608,500	609,000	606,900	-500	-0.1%	1,600	0.3%
<i>Wood Product Manufacturing (NAICS 321)</i>	27,500	27,900	28,600	-400	-1.4%	-1,100	-3.8%
<i>Nonmetallic Mineral Product Manufacturing (NAICS 327)</i>	44,200	44,400	44,600	-200	-0.5%	-400	-0.9%
<i>Primary Metal Manufacturing (NAICS 331)</i>	25,600	25,500	25,900	100	0.4%	-300	-1.2%
<i>Fabricated Metal Product Manufacturing (NAICS 332)</i>	131,400	131,000	125,500	400	0.3%	5,900	4.7%
<i>Machinery Manufacturing (NAICS 333)</i>	90,600	90,400	88,700	200	0.2%	1,900	2.1%
<i>Computer and Electronic Product Manufacturing (NAICS 334)</i>	108,600	108,500	112,500	100	0.1%	-3,900	-3.5%
<i>Electric Equipment, Appliance, and Component Mfg (NAICS 335)</i>	19,400	19,300	19,500	100	0.5%	-100	-0.5%
<i>Transportation Equipment Manufacturing (NAICS 336)</i>	95,900	96,000	95,500	-100	-0.1%	400	0.4%
<i>Furniture and Related Product Manufacturing (NAICS 337)</i>	33,200	33,700	33,400	-500	-1.5%	-200	-0.6%
<i>Miscellaneous Manufacturing (NAICS 339)</i>	32,100	32,300	32,700	-200	-0.6%	-600	-1.8%
Nondurable Goods	322,400	323,900	325,000	-1,500	-0.5%	-2,600	-0.8%
<i>Food Manufacturing (NAICS 311)</i>	90,600	91,400	90,700	-800	-0.9%	-100	-0.1%
<i>Beverage and Tobacco Product Manufacturing (NAICS 312)</i>	12,000	11,800	11,400	200	1.7%	600	5.3%
<i>Paper Manufacturing (NAICS 322)</i>	19,800	19,800	20,500	0	0.0%	-700	-3.4%
<i>Printing and Related Support Manufacturing (NAICS 323)</i>	34,200	34,400	35,300	-200	-0.6%	-1,100	-3.1%
<i>Petroleum and Coal Products Manufacturing (NAICS 324)</i>	23,800	23,900	23,800	-100	-0.4%	0	0.0%
<i>Chemical Manufacturing (NAICS 325)</i>	73,700	73,300	73,000	400	0.5%	700	1.0%
<i>Plastics and Rubber Manufacturing (NAICS 326)</i>	46,600	47,100	46,900	-500	-1.1%	-300	-0.6%

Statewide Over-the-Month Change (Not Seasonally Adjusted)
June 2007 to July 2007



*Estimates for the current month are preliminary. All estimates are subject to revision. The number of nonagricultural jobs in Texas is without reference to place of residence of workers. Estimates of the TWC are in cooperation with the Bureau of Labor Statistics, U.S. Department of Labor.

Texas Nonagricultural Wage and Salary Employment (Not Seasonally Adjusted)

	July '07*	June '07	July '06	June '07 to July '07	July '06 to July '07
				Change % Change	Change % Change
SERVICE PROVIDING	8,478,800	8,538,600	8,252,200	-59,800 -0.7%	226,600 2.7%
Private Service Providing	6,822,200	6,822,300	6,631,600	-100 0.0%	190,600 2.9%
Trade, Transportation, and Utilities (NAICS 42,44,45,48,49,22)	2,066,500	2,064,200	2,036,100	2,300 0.1%	30,400 1.5%
Wholesale Trade (NAICS 42)	505,800	503,200	493,500	2,600 0.5%	12,300 2.5%
<i>Merchant Wholesalers, Durable Goods (NAICS 423)</i>	<i>300,300</i>	<i>298,100</i>	<i>286,000</i>	<i>2,200 0.7%</i>	<i>14,300 5.0%</i>
<i>Merchant Wholesalers, Nondurable Goods (NAICS 424)</i>	<i>158,300</i>	<i>158,400</i>	<i>156,700</i>	<i>-100 -0.1%</i>	<i>1,600 1.0%</i>
Retail Trade (NAICS 44-45)	1,136,400	1,137,500	1,123,500	-1,100 -0.1%	12,900 1.1%
<i>Motor Vehicle and Parts Dealers (NAICS 441)</i>	<i>157,200</i>	<i>157,100</i>	<i>154,900</i>	<i>100 0.1%</i>	<i>2,300 1.5%</i>
<i>Furniture and Home Furnishings Stores (NAICS 442)</i>	<i>43,600</i>	<i>43,800</i>	<i>42,900</i>	<i>-200 -0.5%</i>	<i>700 1.6%</i>
<i>Electronics and Appliance Stores (NAICS 443)</i>	<i>44,500</i>	<i>45,000</i>	<i>44,400</i>	<i>-500 -1.1%</i>	<i>100 0.2%</i>
<i>Building Material and Garden Equipment and Supplies (NAICS 444)</i>	<i>99,200</i>	<i>99,500</i>	<i>92,600</i>	<i>-300 -0.3%</i>	<i>6,600 7.1%</i>
<i>Food and Beverage Stores (NAICS 445)</i>	<i>195,600</i>	<i>195,900</i>	<i>194,300</i>	<i>-300 -0.2%</i>	<i>1,300 0.7%</i>
<i>Health and Personal Care Stores (NAICS 446)</i>	<i>60,100</i>	<i>60,700</i>	<i>58,100</i>	<i>-600 -1.0%</i>	<i>2,000 3.4%</i>
<i>Gasoline Stations (NAICS 447)</i>	<i>65,100</i>	<i>65,500</i>	<i>68,000</i>	<i>-400 -0.6%</i>	<i>-2,900 -4.3%</i>
<i>Clothing and Clothing Accessories Stores (NAICS 448)</i>	<i>109,200</i>	<i>109,300</i>	<i>109,200</i>	<i>-100 -0.1%</i>	<i>0 0.0%</i>
<i>Sporting Goods, Hobby, Book, and Music Stores (NAICS 451)</i>	<i>35,500</i>	<i>35,400</i>	<i>35,300</i>	<i>100 0.3%</i>	<i>200 0.6%</i>
<i>General Merchandise Stores (NAICS 452)</i>	<i>248,500</i>	<i>247,400</i>	<i>245,600</i>	<i>1,100 0.4%</i>	<i>2,900 1.2%</i>
<i>Miscellaneous Store Retailers (NAICS 453)</i>	<i>61,000</i>	<i>60,600</i>	<i>59,500</i>	<i>400 0.7%</i>	<i>1,500 2.5%</i>
<i>Nonstore Retailers (NAICS 454)</i>	<i>16,900</i>	<i>17,300</i>	<i>18,700</i>	<i>-400 -2.3%</i>	<i>-1,800 -9.6%</i>
Transportation, Warehousing, and Utilities (NAICS 48-49,22)	424,300	423,500	419,100	800 0.2%	5,200 1.2%
Transportation and Warehousing (NAICS 48,49)	378,600	378,500	374,700	100 0.0%	3,900 1.0%
<i>Air Transportation (NAICS 481)</i>	<i>61,600</i>	<i>61,700</i>	<i>62,900</i>	<i>-100 -0.2%</i>	<i>-1,300 -2.1%</i>
<i>Truck Transportation (NAICS 484)</i>	<i>117,400</i>	<i>117,100</i>	<i>114,800</i>	<i>300 0.3%</i>	<i>2,600 2.3%</i>
<i>Pipeline Transportation (NAICS 486)</i>	<i>13,400</i>	<i>13,400</i>	<i>12,700</i>	<i>0 0.0%</i>	<i>700 5.5%</i>
<i>Support Activities for Transportation (NAICS 488)</i>	<i>70,500</i>	<i>69,200</i>	<i>68,100</i>	<i>1,300 1.9%</i>	<i>2,400 3.5%</i>
<i>Couriers and Messengers (NAICS 492)</i>	<i>34,800</i>	<i>35,100</i>	<i>36,400</i>	<i>-300 -0.9%</i>	<i>-1,600 -4.4%</i>
<i>Warehousing and Storage (NAICS 493)</i>	<i>41,900</i>	<i>41,900</i>	<i>40,600</i>	<i>0 0.0%</i>	<i>1,300 3.2%</i>
<i>Utilities (NAICS 22)</i>	<i>45,700</i>	<i>45,000</i>	<i>44,400</i>	<i>700 1.6%</i>	<i>1,300 2.9%</i>
Information (NAICS 51)	223,500	222,700	222,500	800 0.4%	1,000 0.4%
<i>Publishing Industries (Except Internet) (NAICS 511)</i>	<i>51,800</i>	<i>52,000</i>	<i>50,200</i>	<i>-200 -0.4%</i>	<i>1,600 3.2%</i>
<i>Telecommunications (NAICS 517)</i>	<i>85,700</i>	<i>86,500</i>	<i>88,700</i>	<i>-800 -0.9%</i>	<i>-3,000 -3.4%</i>
<i>Internet Service Providers, Web Search Portals (NAICS 518)</i>	<i>35,700</i>	<i>35,900</i>	<i>36,400</i>	<i>-200 -0.6%</i>	<i>-700 -1.9%</i>
Financial Activities (NAICS 52,53)	641,700	641,600	627,500	100 0.0%	14,200 2.3%
Finance and Insurance (NAICS 52)	459,900	459,900	449,600	0 0.0%	10,300 2.3%
<i>Credit Intermediation and Related Activities (NAICS 522)</i>	<i>246,200</i>	<i>245,600</i>	<i>239,300</i>	<i>600 0.2%</i>	<i>6,900 2.9%</i>
<i>Securities, Commodities Contracts, and Other Financial (NAICS 523)</i>	<i>45,800</i>	<i>45,200</i>	<i>43,000</i>	<i>600 1.3%</i>	<i>2,800 6.5%</i>
<i>Insurance Carriers and Related Activities (NAICS 524)</i>	<i>158,700</i>	<i>158,600</i>	<i>156,900</i>	<i>100 0.1%</i>	<i>1,800 1.1%</i>
Real Estate and Rental and Leasing (NAICS 53)	181,800	181,700	177,900	100 0.1%	3,900 2.2%
<i>Real Estate (NAICS 531)</i>	<i>119,100</i>	<i>119,300</i>	<i>115,500</i>	<i>-200 -0.2%</i>	<i>3,600 3.1%</i>
<i>Rental and Leasing Services (NAICS 532)</i>	<i>61,500</i>	<i>61,400</i>	<i>60,100</i>	<i>100 0.2%</i>	<i>1,400 2.3%</i>
Professional and Business Services (NAICS 54,55,56)	1,291,100	1,287,100	1,225,800	4,000 0.3%	65,300 5.3%
Professional, Scientific and Technical Services (NAICS 54)	536,900	535,500	515,500	1,400 0.3%	21,400 4.2%
Management of Companies and Enterprises (NAICS 55)	61,600	61,600	56,200	0 0.0%	5,400 9.6%
Admin and Support and Waste Mgmt and Remediation (NAICS 56)	692,600	690,000	654,100	2,600 0.4%	38,500 5.9%
<i>Administrative and Support Services (NAICS 561)</i>	<i>666,700</i>	<i>664,300</i>	<i>628,900</i>	<i>2,400 0.4%</i>	<i>37,800 6.0%</i>
Education and Health Services (NAICS 61,62)	1,237,600	1,240,100	1,209,100	-2,500 -0.2%	28,500 2.4%
Educational Services (NAICS 61)	137,100	139,700	134,900	-2,600 -1.9%	2,200 1.6%
Health Care and Social Assistance (NAICS 62)	1,100,500	1,100,400	1,074,200	100 0.0%	26,300 2.4%
<i>Ambulatory Health Care Services (NAICS 621)</i>	<i>495,200</i>	<i>494,900</i>	<i>480,300</i>	<i>300 0.1%</i>	<i>14,900 3.1%</i>
<i>Hospitals (NAICS 622)</i>	<i>268,900</i>	<i>268,500</i>	<i>265,400</i>	<i>400 0.1%</i>	<i>3,500 1.3%</i>
<i>Nursing and Residential Care Facilities (NAICS 623)</i>	<i>158,500</i>	<i>157,800</i>	<i>154,300</i>	<i>700 0.4%</i>	<i>4,200 2.7%</i>
<i>Social Assistance (NAICS 624)</i>	<i>177,900</i>	<i>179,200</i>	<i>174,200</i>	<i>-1,300 -0.7%</i>	<i>3,700 2.1%</i>
Leisure and Hospitality (NAICS 71,72)	1,004,500	1,010,000	962,900	-5,500 -0.5%	41,600 4.3%
Arts, Entertainment, and Recreation (NAICS 71)	115,300	117,000	115,100	-1,700 -1.5%	200 0.2%
<i>Amusement, Gambling, and Recreation (NAICS 713)</i>	<i>88,500</i>	<i>88,700</i>	<i>86,900</i>	<i>-200 -0.2%</i>	<i>1,600 1.8%</i>
Accommodation and Food Services (NAICS 72)	889,200	893,000	847,800	-3,800 -0.4%	41,400 4.9%
<i>Accommodation (NAICS 721)</i>	<i>104,700</i>	<i>104,800</i>	<i>101,600</i>	<i>-100 -0.1%</i>	<i>3,100 3.1%</i>
<i>Food Services and Drinking Places (NAICS 722)</i>	<i>784,500</i>	<i>788,200</i>	<i>746,200</i>	<i>-3,700 -0.5%</i>	<i>38,300 5.1%</i>
Other Services (NAICS 81)	357,300	356,600	347,700	700 0.2%	9,600 2.8%
<i>Repair and Maintenance (NAICS 811)</i>	<i>108,300</i>	<i>108,000</i>	<i>104,000</i>	<i>300 0.3%</i>	<i>4,300 4.1%</i>
<i>Personal and Laundry Services (NAICS 812)</i>	<i>93,500</i>	<i>93,700</i>	<i>90,600</i>	<i>-200 -0.2%</i>	<i>2,900 3.2%</i>
<i>Religious, Grantmaking, Civic, Prof Organizations (NAICS 813)</i>	<i>155,500</i>	<i>154,900</i>	<i>153,100</i>	<i>600 0.4%</i>	<i>2,400 1.6%</i>
Government	1,656,600	1,716,300	1,620,600	-59,700 -3.5%	36,000 2.2%
Federal Government	184,700	183,600	185,900	1,100 0.6%	-1,200 -0.6%
State Government	346,800	343,600	340,300	3,200 0.9%	6,500 1.9%
Local Government	1,125,100	1,189,100	1,094,400	-64,000 -5.4%	30,700 2.8%

*Estimates for the current month are preliminary. All estimates are subject to revision. The number of nonagricultural jobs in Texas is without reference to place of residence of workers. Estimates of the TWC are in cooperation with the Bureau of Labor Statistics, U.S. Department of Labor.

Metropolitan Statistical Area (MSA) Nonagricultural Wage & Salary Employment (Not Seasonally Adjusted)

Total Nonagricultural Employment in the Metropolitan Statistical Areas (MSAs) decreased by 44,200 jobs in July. Due to normal seasonal trends, Government employment was the largest contributor to job losses. However, this was the smallest July loss for Government since 1997. The Midland MSA, the College Station-Bryan MSA, and the Odessa MSA posted the only gains between June and July 2007 in Total Nonagricultural Employment, with increases of 400, 200, and 100 jobs, respectively. The McAllen-Edinburg-Mission MSA and the Midland MSA had the highest percentage over-the-year change with 5.5 percent and 5.1 percent, respectively. Over the year, 283,000 jobs have been added within the MSAs for an annual growth rate of 3.2 percent. The annual growth rate has remained positive since February 2004.

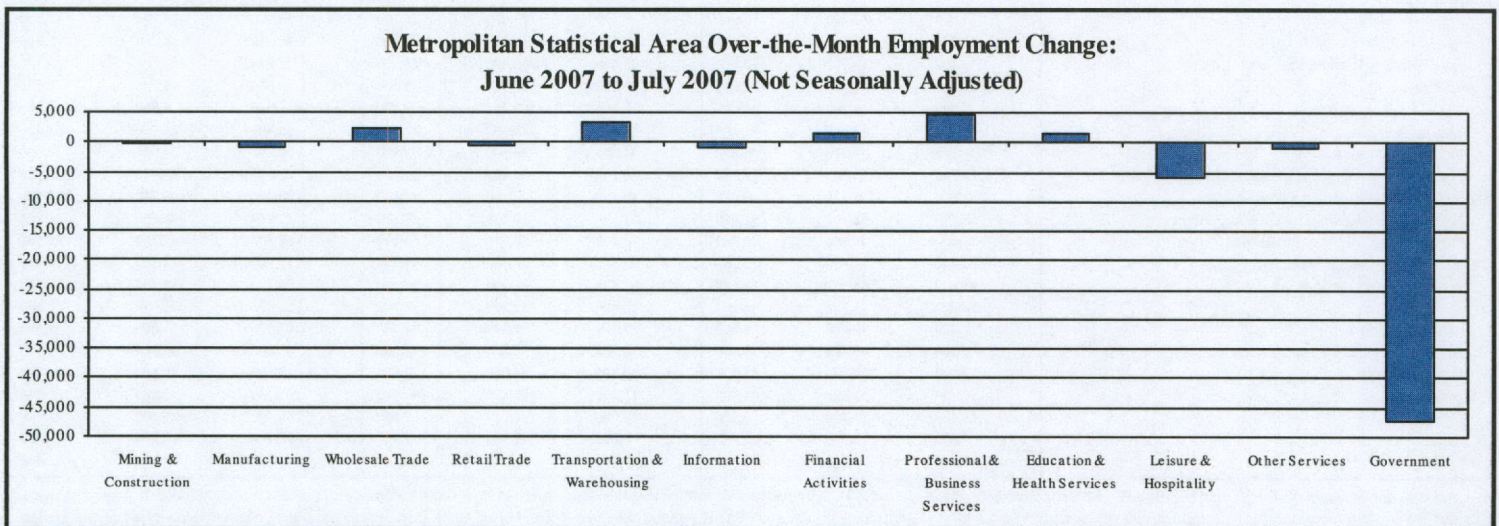
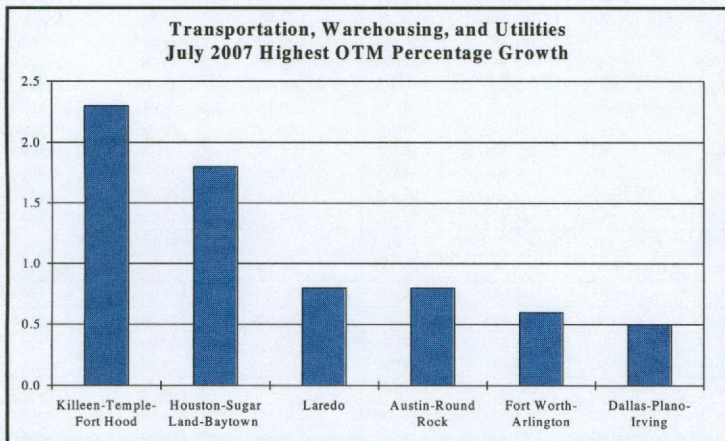
Professional and Business Services employment added 4,500 jobs in July, continuing a six-month positive trend. The McAllen-Edinburg-Mission MSA had the highest over-the-month change with 2.2 percent, while the Wichita Falls MSA had the highest over-the-year growth with 11.4 percent. The Dallas-Plano-Irving area and the Houston-Sugar Land-Baytown MSA had the largest gains within the MSAs, adding 2,600 positions each. The annual growth rate for Professional and Business Services increased to 4.8 percent and has remained positive for over three years.

Transportation, Warehousing, and Utilities increased by 3,300 jobs across the MSAs in July 2007. The Houston-Sugar Land-Baytown MSA accounted for most of the gain, adding 2,200 jobs. The Dallas-Plano-Irving area and the Fort Worth-Arlington area both had employment increases of 400 jobs. The Killeen-Temple-Fort Hood MSA reported the highest percentage increase in July with a gain of 2.3 percent. Annually, the Texarkana MSA registered the most growth at 8.0 percent.

Employment in Financial Activities increased by 1,500 jobs in July for a growth rate of 3.2 percent. Twenty-six of the twenty-seven areas maintained employment or experienced growth. The Houston-Sugar Land-Baytown MSA contributed the most with a payroll expansion of 1,000 for an over-the-month increase of 0.7 percent. The Dallas-Plano-Irving area experienced the second highest growth with 300 payroll additions. Other contributors to July's growth included the San Angelo, Killeen-Temple-Fort Hood, and San Antonio MSAs.

Education and Health Services employment expanded by 1,400 positions in July. The Dallas-Plano-Irving area added 2,900 jobs in July, for an over-the-month growth rate of 1.3 percent. The Waco and the Houston-Sugar Land-Baytown MSAs increased by 200 positions each, representing over-the-month growth rates of 1.1 and 0.1 percent, respectively. The McAllen-Edinburg-Mission MSA experienced the highest annual growth at 5.4 percent.

Government had a job decline of 47,300 jobs in July. This decrease was primarily due to seasonal activity in Local Government as areas schools released staff for the summer holiday. While the majority of the MSAs reported seasonal declines in Government, the College Station-Bryan MSA posted positive monthly job growth, adding 500 jobs. The McAllen-Edinburg-Mission MSA posted the largest percentage of over-the-year job growth with 12.5 percent, followed by the El Paso MSA at 7.3 percent. In Local Government, the McAllen-Edinburg-Mission MSA and the Texarkana MSA recorded the highest percentage of annual job growth with 14.7 percent and 11.8 percent, respectively.



Highlights of the Texas Labor Force (Not Seasonally Adjusted)

The unemployment rate in Texas increased two-tenths of a percentage point to 4.8 percent in July 2007. The current rate was six-tenths of a percentage point below the July 2006 level of 5.4 percent. The Texas unemployment rate has remained at or below 5.0 percent since August 2006. The United States jobless rate increased to 4.9 percent in July from 4.7 in June. In addition, the national unemployment rate was one-tenth of a percentage point lower than last year's rate of 5.0 percent. The Texas unemployment rate has been lower than the United States rate for the past eight months.

The number of employed workers in Texas increased in July by 4,100 job holders. The rise brought the state employment total to 11,089,400. This was the fifth consecutive increase this year coming off a two-month decline in January and February. Over the year, the number of Texas jobholders rose by 129,600.

The number of Texans seeking work increased by 21,200 to total 553,600 job seekers in July. The rise in the number of unemployed was partially attributed to seasonal reductions at local school districts as non-contract personnel were released for the summer. Since July of last year, unemployment declined by 72,600.

The number of people receiving unemployment benefits in Texas rose by 7,000 to total 83,300 claims in July. Twenty-two Metropolitan Statistical Areas (MSAs) observed claims count increases over the month, and three MSAs realized a decrease in claims. The McAllen-Edinburg-Mission MSA listed a claims increase of 30.3 percent. The Killeen-Temple-Fort Hood MSA posted a 22.8 percent increase in claims. The Abilene MSA recorded the largest decline with an 18.6 percent decrease for the month followed by the Laredo MSA posting a 3.8 percent drop.

All twenty-five MSAs in Texas recorded a decrease in their unemployment rate from July 2006 to July 2007. The Midland MSA continued to have the lowest MSA unemployment rate in Texas at 3.2 percent for July 2007.

MSAs Ranked by Unemployment Rate July 2007 (Not Seasonally Adjusted)

1	Midland	3.2
2	Amarillo	3.7
3	Odessa	3.8
4	Austin-Round Rock	4.0
5 (tie)	Abilene	4.1
	San Angelo	4.1
	Victoria	4.1
8	Lubbock	4.2
9	College Station-Bryan	4.3
10	Wichita Falls	4.5
11 (tie)	Dallas-Fort Worth-Arlington	4.6
	Houston-Sugar Land-Baytown	4.6
	San Antonio	4.6
	Tyler	4.6
15	Longview	4.7
	Texas	4.8
	United States	4.9
16	Corpus Christi	4.9
17 (tie)	Sherman-Denison	5.0
	Waco	5.0
19 (tie)	Killeen-Temple-Fort Hood	5.2
	Texarkana	5.2
21	Laredo	5.3
22	Beaumont-Port Arthur	5.9
23	El Paso	6.4
24	Brownsville-Harlingen	6.6
25	McAllen-Edinburg-Mission	7.2

Civilian Labor Force Estimates for Texas Metropolitan Statistical Areas Not Seasonally Adjusted (In Thousands)

	July 2007				June 2007				July 2006			
	C.L.F.	Emp.	Unemp.	Rate	C.L.F.	Emp.	Unemp.	Rate	C.L.F.	Emp.	Unemp.	Rate
United States	154,871.0	147,315.0	7,556.0	4.9	154,252.0	146,958.0	7,295.0	4.7	153,208.0	145,606.0	7,602.0	5.0
State of Texas	11,643.2	11,089.4	553.6	4.8	11,617.7	11,085.3	532.4	4.6	11,586.0	10,959.8	626.2	5.4
Abilene	82.2	78.9	3.3	4.1	82.6	79.3	3.3	4.0	83.0	79.2	3.8	4.6
Amarillo	131.9	127.0	4.9	3.7	130.8	126.0	4.8	3.7	132.1	126.5	5.6	4.2
Austin-Round Rock	851.9	818.2	33.7	4.0	848.0	815.7	32.3	3.8	836.4	798.3	38.1	4.6
Beaumont-Port Arthur	182.2	171.4	10.8	5.9	182.1	172.0	10.1	5.6	179.5	167.6	11.9	6.6
Brownsville-Harlingen	145.9	136.3	9.6	6.6	145.2	135.8	9.4	6.5	148.2	137.6	10.6	7.1
College Station-Bryan	101.3	97.0	4.3	4.3	100.3	95.9	4.4	4.4	102.4	97.6	4.8	4.7
Corpus Christi	203.0	193.0	10.0	4.9	203.0	193.4	9.6	4.7	202.3	191.1	11.2	5.5
Dallas-Fort Worth-Arlington	3,163.2	3,017.5	145.7	4.6	3,153.1	3,013.8	139.3	4.4	3,135.7	2,972.4	163.3	5.2
Dallas-Plano-Irving MD	2,124.6	2,027.1	97.5	4.6	2,115.0	2,021.6	93.4	4.4	2,107.9	1,998.6	109.3	5.2
Fort Worth-Arlington MD	1,038.6	990.4	48.2	4.6	1,038.1	992.2	45.9	4.4	1,027.8	973.8	54.0	5.3
El Paso	295.5	276.7	18.8	6.4	294.2	275.9	18.3	6.2	292.7	271.0	21.7	7.4
Houston-Sugar Land-Baytown	2,758.2	2,631.7	126.5	4.6	2,743.2	2,621.7	121.5	4.4	2,717.7	2,571.8	145.9	5.4
Killeen-Temple-Fort Hood	151.3	143.5	7.8	5.2	151.4	143.7	7.7	5.1	154.6	145.7	8.9	5.8
Laredo	90.3	85.5	4.8	5.3	90.3	85.5	4.8	5.3	89.5	84.1	5.4	6.1
Longview	105.1	100.1	5.0	4.7	104.4	99.8	4.6	4.4	105.4	99.6	5.8	5.5
Lubbock	144.5	138.5	6.0	4.2	145.1	139.2	5.9	4.1	143.7	136.8	6.9	4.8
McAllen-Edinburg-Mission	270.4	250.8	19.6	7.2	273.4	254.6	18.8	6.9	263.9	242.6	21.3	8.1
Midland	73.2	70.8	2.4	3.2	72.3	70.0	2.3	3.2	71.7	69.0	2.7	3.8
Odessa	68.5	65.9	2.6	3.8	67.8	65.2	2.6	3.8	66.9	64.0	2.9	4.4
San Angelo	53.6	51.4	2.2	4.1	54.0	51.8	2.2	4.0	54.8	52.2	2.6	4.8
San Antonio	940.6	897.7	42.9	4.6	941.1	899.6	41.5	4.4	938.4	889.6	48.8	5.2
Sherman-Denison	58.2	55.3	2.9	5.0	57.9	55.2	2.7	4.6	57.8	54.7	3.1	5.4
Texarkana	62.9	59.7	3.2	5.2	63.2	60.1	3.1	4.9	62.9	59.2	3.7	5.8
Tyler	98.0	93.5	4.5	4.6	97.7	93.4	4.3	4.4	98.1	93.2	4.9	5.0
Victoria	58.8	56.4	2.4	4.1	58.6	56.3	2.3	4.0	59.1	56.3	2.8	4.7
Waco	114.2	108.5	5.7	5.0	113.7	108.2	5.5	4.8	114.1	107.8	6.3	5.5
Wichita Falls	76.2	72.8	3.4	4.5	76.0	72.7	3.3	4.4	76.6	72.9	3.7	4.9

All estimates are subject to revision. Estimates reflect actual (not seasonally adjusted) data. Civilian Labor Force (C.L.F.) includes wage and salary workers, self-employed, unpaid family, domestics in private households, agricultural workers, workers involved in labor disputes and the unemployed, all by place of residence. Employment and Unemployment data are first rounded then added together to derive the rounded CLF total. Because of this rounding technique, this rounded total of the CLF may not agree with a rounding of the CLF total itself. Percent Unemployed is based upon unrounded Labor Force, Employment and Unemployment numbers. Estimates of the TWC are in cooperation with the Bureau of Labor Statistics, U.S. Department of Labor. Beginning with January 2005 estimates, definitions of the MSAs were updated to reflect the 2000 Census-based configurations. Please see www.tracer2.com for details on these changes. The Dallas-Fort Worth-Arlington MSA is comprised of the Dallas-Plano-Irving Metropolitan Division (MD) and the Fort Worth-Arlington MD.

Employment and Unemployment Estimates for Texas Cities - July 2007

City	CLF	Emp.	Unemp	Rate	City	CLF	Emp.	Unemp	Rate	City	CLF	Emp.	Unemp	Rate
Abilene	58,046	55,612	2,434	4.2	Friendswood	18,506	17,784	722	3.9	North Richland Hills	36,171	34,727	1,444	4.0
Allen	39,624	38,071	1,553	3.9	Frisco	41,670	40,075	1,595	3.8	Odessa	51,337	49,395	1,942	3.8
Amarillo	101,483	97,769	3,714	3.7	Galveston	27,943	26,505	1,438	5.1	Paris	12,058	11,355	703	5.8
Arlington	210,153	200,780	9,373	4.5	Garland	116,657	111,257	5,400	4.6	Pasadena	68,775	65,072	3,703	5.4
Austin	419,804	404,114	15,690	3.7	Georgetown	19,675	18,823	852	4.3	Pearland	33,205	31,892	1,313	4.0
Baytown	33,070	30,942	2,128	6.4	Grand Prairie	75,918	72,334	3,584	4.7	Pflugerville	16,870	16,259	611	3.6
Beaumont	54,726	51,658	3,068	5.6	Grapevine	29,105	28,047	1,058	3.6	Pharr	22,790	21,398	1,392	6.1
Bedford	31,657	30,476	1,181	3.7	Greenville	12,321	11,721	600	4.9	Plano	148,577	142,610	5,967	4.0
Big Spring	9,329	8,830	499	5.3	Haltom City	21,812	20,838	974	4.5	Port Arthur	23,216	21,392	1,824	7.9
Brownsville	62,757	58,566	4,191	6.7	Harlingen	25,235	23,786	1,449	5.7	Richardson	58,322	56,020	2,302	3.9
Bryan	35,604	34,207	1,397	3.9	Houston	1,017,781	970,879	46,902	4.6	Rockwall	16,791	16,122	669	4.0
Burleson	16,582	15,851	731	4.4	Huntsville	14,921	14,075	846	5.7	Rosenberg	15,194	14,534	660	4.3
Carrollton	72,783	69,894	2,889	4.0	Hurst	21,611	20,708	903	4.2	Round Rock	50,065	48,317	1,748	3.5
Cedar Hill	23,882	22,752	1,130	4.7	Irving	114,830	110,211	4,619	4.0	Rowlett	30,188	28,965	1,223	4.1
Cedar Park	28,102	27,156	946	3.4	Keller	19,761	18,992	769	3.9	San Angelo	44,250	42,438	1,812	4.1
Cleburne	14,017	13,407	610	4.4	Killeen	41,257	38,973	2,284	5.5	San Antonio	619,032	591,168	27,864	4.5
College Station	39,282	37,539	1,743	4.4	Kingsville	13,247	12,644	603	4.6	San Juan	11,816	10,998	818	6.9
Conroe	24,331	23,341	990	4.1	Lake Jackson	14,463	13,827	636	4.4	San Marcos	27,061	26,039	1,022	3.8
Coppell	21,938	21,158	780	3.6	Lancaster	16,429	15,458	971	5.9	Schertz	14,268	13,719	549	3.8
Copperas Cove	13,338	12,661	677	5.1	La Porte	18,712	17,896	816	4.4	Sherman	17,724	16,777	947	5.3
Corpus Christi	145,071	138,286	6,785	4.7	Laredo	85,326	81,049	4,277	5.0	Socorro	10,866	10,048	818	7.5
Corsicana	10,666	10,031	635	6.0	League City	35,909	34,479	1,430	4.0	Sugar Land	41,980	40,440	1,540	3.7
Dallas	616,306	585,892	30,414	4.9	Lewisville	57,897	55,635	2,262	3.9	Temple	28,681	27,516	1,165	4.1
Deer Park	16,663	15,932	731	4.4	Longview	39,909	38,024	1,885	4.7	Texarkana	16,287	15,407	880	5.4
Del Rio	16,137	14,854	1,283	8.0	Lubbock	118,386	113,521	4,865	4.1	Texas City	21,421	19,995	1,426	6.7
Denton	61,105	58,462	2,643	4.3	Lufkin	16,663	15,863	800	4.8	The Colony	22,613	21,645	968	4.3
DeSoto	25,665	24,339	1,326	5.2	McAllen	57,952	55,048	2,904	5.0	Tyler	47,482	45,312	2,170	4.6
Duncanville	19,274	18,315	959	5.0	McKinney	51,886	49,488	2,398	4.6	Victoria	32,881	31,630	1,251	3.8
Eagle Pass	10,803	9,662	1,141	10.6	Mansfield	21,726	20,771	955	4.4	Waco	56,272	53,055	3,217	5.7
Edinburg	28,219	26,576	1,643	5.8	Mesquite	73,467	70,199	3,268	4.4	Waxahachie	12,938	12,358	580	4.5
El Paso	253,594	238,403	15,191	6.0	Midland	60,074	58,138	1,936	3.2	Weslaco	12,707	11,791	916	7.2
Eules	32,259	31,014	1,245	3.9	Mission	24,438	22,946	1,492	6.1	Wichita Falls	48,629	46,276	2,353	4.8
Farmers Branch	15,047	14,443	604	4.0	Missouri City	40,701	38,975	1,726	4.2	Wylie	16,463	15,757	706	4.3
Flower Mound	36,223	34,891	1,332	3.7	Missogdoches	16,213	15,348	865	5.3					
Fort Worth	309,408	293,940	15,468	5.0	New Braunfels	25,103	24,159	944	3.8					

Estimates reflect actual (not seasonally adjusted) data. All estimates are subject to revision. Estimates of the TWC are in cooperation with the Bureau of Labor Statistics, U.S. Department of Labor.

Civilian Labor Force Estimates for WDAs July 2007				
	CLF	Emp.	Unemp.	Rate
Alamo	989,494	944,511	44,983	4.5
Brazos Valley	141,015	134,755	6,260	4.4
Cameron County	145,923	136,314	9,609	6.6
Capital Area	535,615	514,960	20,655	3.9
Central Texas	172,436	163,630	8,806	5.1
Coastal Bend	270,221	256,757	13,464	5.0
Concho Valley	75,333	72,324	3,009	4.0
Dallas	1,207,236	1,149,446	57,790	4.8
Deep East Texas	162,111	152,829	9,282	5.7
East Texas	383,430	364,875	18,555	4.8
Golden Crescent	95,257	91,268	3,989	4.2
Gulf Coast	2,821,014	2,690,982	130,032	4.6
Heart Of Texas	165,868	157,546	8,322	5.0
Lower Rio Grande Valley	299,560	277,070	22,490	7.5
Middle Rio Grande	65,221	59,822	5,399	8.3
North Central Texas	1,153,000	1,102,387	50,613	4.4
North East Texas	132,550	125,802	6,748	5.1
North Texas	114,874	109,909	4,965	4.3
Panhandle	214,121	205,742	8,379	3.9
Permian Basin	199,134	191,418	7,716	3.9
Rural Capital	372,817	357,464	15,353	4.1
South East Texas	182,213	171,410	10,803	5.9
South Plains	203,554	194,533	9,021	4.4
South Texas	98,128	92,882	5,246	5.3
Tarrant County	881,334	840,249	41,085	4.7
Texoma	93,787	89,146	4,641	4.9
Upper Rio Grande	308,860	289,315	19,545	6.3
West Central Texas	158,926	152,040	6,886	4.3

Hours and Earnings for Texas and Selected Texas Metropolitan Statistical Areas & Metro Divisions									
Area	Average Weekly Earnings			Average Weekly Hours			Average Hourly Earnings		
	July '07	June '07	July '06	July '07	June '07	July '06	July '07	June '07	July '06
Texas									
Manufacturing	\$581.74	\$588.54	\$573.42	41.2	41.8	40.9	\$14.12	\$14.08	\$14.02
Durable Goods	\$575.37	\$578.23	\$565.45	42.4	42.8	41.7	\$13.57	\$13.51	\$13.56
Nondurable Goods	\$594.61	\$607.42	\$585.39	39.3	40.2	39.5	\$15.13	\$15.11	\$14.82
Dallas-Ft. Worth-Arlington MSA									
Manufacturing	\$602.82	\$612.52	\$618.12	39.4	39.8	40.4	\$15.30	\$15.39	\$15.30
Durable Goods	\$665.01	\$672.74	\$667.85	40.5	40.6	40.5	\$16.42	\$16.57	\$16.49
Nondurable Goods	\$490.13	\$502.81	\$521.20	37.5	38.5	40.0	\$13.07	\$13.06	\$13.03
Houston-Sugar Land-Baytown MSA									
Manufacturing	\$670.13	\$674.77	\$649.78	40.2	40.6	38.2	\$16.67	\$16.62	\$17.01
Durable Goods	\$611.06	\$619.48	\$564.87	42.2	42.9	39.2	\$14.48	\$14.44	\$14.41
Nondurable Goods	\$783.01	\$783.01	\$790.59	36.2	36.2	36.5	\$21.63	\$21.63	\$21.66
San Antonio MSA									
Manufacturing	\$544.81	\$542.10	\$485.62	45.1	45.1	41.9	\$12.08	\$12.02	\$11.59
Durable Goods	\$594.84	\$585.82	\$512.87	48.4	47.9	43.5	\$12.29	\$12.23	\$11.79
Nondurable Goods	\$468.77	\$473.75	\$445.17	40.1	40.7	39.5	\$11.69	\$11.64	\$11.27
Dallas-Plano-Irving MD*									
Manufacturing	\$531.60	\$538.62	\$548.02	38.3	38.5	39.2	\$13.88	\$13.99	\$13.98
Durable Goods	\$530.58	\$530.35	\$537.04	38.7	38.1	37.9	\$13.71	\$13.92	\$14.17
Nondurable Goods	\$532.42	\$552.72	\$564.98	37.6	39.2	41.3	\$14.16	\$14.10	\$13.68
Ft. Worth-Arlington MD*									
Manufacturing	\$725.74	\$736.68	\$741.20	41.4	42.0	42.5	\$17.53	\$17.54	\$17.44
Durable Goods	\$871.20	\$886.89	\$870.15	43.3	44.3	44.6	\$20.12	\$20.02	\$19.51
Nondurable Goods	\$401.39	\$398.89	\$424.47	37.2	36.9	37.3	\$10.79	\$10.81	\$11.38

Estimates of the TWC are in cooperation with the Bureau of Labor Statistics, U.S. Department of Labor. Estimates reflect actual (not seasonally adjusted) data. All estimates are subject to revision. *Metropolitan Division (MD). The Dallas-Fort Worth-Arlington MSA is comprised of the Dallas-Plano-Irving MD and the Fort Worth-Arlington MD.

GLOSSARY OF LABOR MARKET TERMS

Actual or Not Seasonally Adjusted - This term is used to describe data series not subject to the seasonal adjustment process. In other words, the effects of regular, or seasonal, patterns have not been removed from these series.

Civilian Labor Force (CLF) - Is that portion of the population age 16 and older who are employed or unemployed. To be considered unemployed, a person has to be not working but willing and able to work and actively seeking work.

Consumer Price Index (CPI) - Is a measure of the average change over time in the prices paid by urban consumers for a market basket of consumer goods and services. The CPI provides a way for consumers to compare what the market basket of goods and services costs this month with what the same market basket cost a month or a year ago.

Current Employment Statistics (CES) - A monthly survey of nonfarm business establishments used to collect wage and salary employment, workers hours, and payroll, by industry and area. It is sometimes known as Nonagricultural Employment.

Employed (Emp) - Persons 16 years and over in the civilian noninstitutional population who, during the reference week, (a) did any work at all (at least 1 hour) as paid employees, worked in their own business, profession, or on their own farm, or worked 15 hours or more as unpaid workers in an enterprise operated by a member of the family, and (b) all those who were not working but who had jobs or businesses from which they were temporarily absent because of vacation, illness, bad weather, childcare problems, maternity or paternity leave, labor-management dispute, job training, or other family or personal reasons, whether or not they were paid for the time off or were seeking other jobs. Each employed person is counted only once, even if he or she holds more than one job.

Local Area Unemployment Statistics (LAUS) - The Federal/State cooperative program which produces employment and unemployment

estimates for states and local areas. These estimates are developed by State Employment Security Agencies in accordance with Bureau of Labor Statistics (BLS) definitions and procedures. Data is used for planning and budgetary purposes as an indication of need for employment and training services programs. Estimates are also used to allocate Federal funds.

Metropolitan Division (MD) - A Metropolitan Statistical Area which contains a single core with a population of 2.5 million or more may be subdivided into smaller groupings of counties referred to as Metropolitan Divisions. Titles of Metropolitan Divisions are typically based on principal city names. Texas has two Metropolitan Divisions, the Dallas-Plano-Irving MD and the Fort Worth-Arlington MD, which combine to form the Dallas-Fort Worth-Arlington MSA.

Metropolitan Statistical Area (MSA) - A geographic area that contains at least one urbanized area of 50,000 or more population plus adjacent territory that has a high degree of social and economic integration with the core urban area. An MSA in Texas is made up of one or more counties. The U.S. Office of Management and Budget defines metropolitan areas according to published standards that are applied to Census Bureau data. Texas has 25 MSAs and two Metropolitan Divisions (MD).

Seasonally Adjusted (SA) - Seasonal adjustment removes the effects of events that follow a more or less regular pattern each year. These adjustments make it easier to observe the cyclical and other non-seasonal movements in a data series.

Unemployed (Unemp) - Persons 16 years and over who had no employment during the reference week, were available for work, except for temporary illness, and had made specific efforts to find employment sometime during the 4-week period ending with the reference week. Persons who were waiting to be recalled to a job from which they had been laid off need not have been looking for work to be classified as unemployed.

“HAPPENINGS AROUND THE STATE”

Company Will Bring 4,000 Jobs to Texas

SAN ANTONIO, TX (San Antonio Express-News—L.A. Lorek)—Rackspace Managed Hosting will receive a \$22 million grant from the Texas Enterprise Fund as part of an incentive package to help the high-tech company relocate to Windsor Park Mall and add up to 4,000 new jobs around the state. Rackspace must add 3,000 new jobs in San Antonio and another 1,000 statewide. It has an office in Austin and a data center in Grapevine.

The San Antonio City Council members unanimously approved a boundary change giving the city of Windcrest taxing rights on 221 acres so it can establish a campus for Rackspace at Windsor Park Mall. Company officials hope to have their first group of employees moved into Windcrest by year's end.

Chemical Company to Open Plant

BEAUMONT, TX (Beaumont Enterprise)—Eastman Chemical Co.'s selection of Beaumont as a location for its \$1.6 billion gasification plant could bring nearly 2,000 jobs to the area. The Kingsport, Tenn.-based company announced it would build its new plant near Texas Highway 347 after the Beaumont Independent School District approved a tax abatement program.

According to Impact DataSource, an Austin-based consultant, the first ten years of Eastman's plant will result in 2,012 direct and indirect jobs. Eastman

plans to produce a gas from the leftovers of the crude oil-refining process that eventually will become a cleansed gas used in making chemicals that are the building blocks in the plastics industry.

PayPal Center Planned for Austin

AUSTIN, TX (Austin American-Statesman—Lilly Rockwell and M.B. Taboada)—PayPal Inc., an online payment system owned by the auction site eBay, says it is building a data services center in Austin, with up to 300 jobs to be available in the next two years. "Austin is a key city and a key pool of talent for us to succeed in our long-term growth as PayPal," said Matthew Mengerink, vice president of core technologies for the Silicon Valley firm.

Energy Company to Add Positions

AMARILLO, TX (Borger News Herald)—Xcel Energy's Texas-based operating company, Southwestern Public Service Company, is hiring 65 new positions across its service territory to enhance the company's service to its regional customers. Chief among service changes are the reestablishment of regional divisions that will be based in Amarillo, Lubbock and Roswell, serving the Texas Panhandle, the Texas South Plains and eastern and southeastern New Mexico regions, respectively.

INDICATORS

Texas Unemployment Rate

Actual (Not Seasonally Adjusted)			Seasonally Adjusted		
JULY	2007	4.8%	JULY	2007	4.4%
JUNE	2007	4.6%	JUNE	2007	4.1%
JULY	2006	5.4%	JULY	2006	4.9%

U.S. Unemployment Rate

Actual (Not Seasonally Adjusted)			Seasonally Adjusted		
JULY	2007	4.9%	JULY	2007	4.6%
JUNE	2007	4.7%	JUNE	2007	4.5%
JULY	2006	5.0%	JULY	2006	4.8%

Texas Nonagricultural Wage & Salary Employment

Not Seasonally Adjusted			Seasonally Adjusted		
JULY	2007	10,243,700	JULY	2007	10,305,500
JUNE	2007	10,305,200	JUNE	2007	10,276,100
JULY	2006	9,976,700	JULY	2006	10,039,600
OTM Change		-61,500	OTM Change		29,400
OTY Change		267,000	OTY Change		265,900

Unemployment Insurance Claims

Initial Claims			Continued Claims		
JULY	2007	60,171	JULY	2007	469,794
JUNE	2007	58,120	JUNE	2007	392,663
JULY	2006	60,204	JULY	2006	482,834

Consumer Price Index (CPI)

Annual Change			
U.S.	JULY 2007	2.4%	
Dallas-Fort Worth	JULY 2007	1.3%	
Houston-Galveston	JUNE 2007	1.2%	

Help Wanted Index - Texas

JULY	2007	N/A
JUNE	2007	51.7
JULY	2006	58.1

West Texas Intermediate Crude Oil (\$/barrel)

JULY	2007	\$ 74.18	OTM Change	\$ 6.70
JUNE	2007	\$ 67.48	OTY Change	-\$ 0.23
JULY	2006	\$ 74.41		

Note: N/A - Not available at time of publication

Texas Labor Market Review

Labor Market & Career Information



The Texas Labor Market Review (TLMR) is published monthly by the Labor Market & Career Information Department of the Texas Workforce Commission. Material in the TLMR is not copyrighted and may be reproduced. The TWC would appreciate credit for the material used and a copy of the reprint. For a free subscription to the TLMR, or to change your mailing address, contact the LMCI Department.

Phone (512) 491-4922 Toll Free 1-866-938-4444
 Fax (512) 491-4904
 Website www.tracer2.com
 E-mail lmi@twc.state.tx.us

You can view the TLMR on-line by going to www.tracer2.com and selecting "LMI Publications".

Mark Hughes, LMCI Director

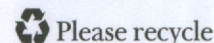
TLMR Staff:

Robert Crawley & James Dossett, Editors
 Rachel Tello Sanchez, Layout and Design

Contributors: Richard Adame, Phil Arnold, Cynthia Brewer, Honor Byrd, Aretina Cotton, Veronica Downey, Kathy DeLaRosa Duran, Larbi Hanni, David Jesus, Nathan Jones, Carrie Lawrence, Vincent Lyons, David Mass, Ander Mitchell, and Becky Parker.

Copies of this publication have been distributed in compliance with the State Depository Law, and are available for public use through the Texas State Publication Depository Program at the Texas State Library and other state depository libraries.

Equal Opportunity Employer/Programs. Auxiliary aids and services are available, on request, to individuals with disabilities.
 Contact Relay Texas @ 7-1-1



LMCI DEPARTMENT
 TEXAS WORKFORCE COMMISSION
 101 E 15TH ST STE 103 A2
 AUSTIN TX 78778-0001

OFFICIAL BUSINESS
 PENALTY FOR PRIVATE USE \$300

ADDRESS SERVICE REQUESTED

PRSR STD
 Postage and Fees Paid
 Texas Workforce Commission
 Permit No. G-12

Government Publications
 Texas State Documents

NOV 15 2007

Depository
 Dallas Public Library

~~Government Publications
 Texas State Documents~~

~~NOV 15 2007~~

~~Dallas Public Library~~