

2  
TA265.6  
P331  
92/8



TEXAS AGRICULTURAL  
EXTENSION SERVICE

Bill Ree

Bill Ree, Extension Pest Management- Pecans  
Jerral D. Johnson, Extension Plant Pathologist  
George Ray McEachern, Extension Horticulturist  
Charles Cole, Extension Entomologist

Government Publications  
Texas State Documents

# Texas Pecan Pest Management Newsletter



✓ OCT 05 1992

August 24, 1992  
92-8

## General

Over the past couple weeks scattered showers have brought needed moisture to many orchards. Although the rain is needed, the increased humidity is causing problems controlling pecan scab.

Several producers/homeowners have observed pecans dropping during the past couple weeks. Most of the fallen pecans I have observed have dropped from stem end blight.

## Insects

**Pecan Nut Casebearer** - A report was received last week that PNC in El Paso has moved from the urban area to commercial orchards. A commercial orchard near Socorro, southeast of El Paso, was reported to have a significant infestation of PNC. PNC has also been reported from orchards north of El Paso in New Mexico.

Other than the El Paso report, very little 2nd or 3rd generation PNC activity has been observed or reported.

This author is looking for locations to collect active PNC. If anyone has a significant 3rd generation infestation of PNC please contact me (409-845-6800

Depository  
Dallas Public Library

of P.O. Box 2150, Bryan, TX 77806-2150). We are trying to establish a laboratory colony and we are in need of additional larvae.

**Hickory Shuckworm** - Insecticides for this insect have been going out over the past couple weeks. It will take two treatments about 10 to 14 days apart to minimize damage. All of the insecticides that are labeled for pecan nut casebearer can be used for the hickory shuckworm except those products containing *Bacillus thuringiensis* (Bt.).

Hickory shuckworm catches in pheromone traps have been light in Robertson, Bastrop, Navarro and Caldwell counties but a black light trap in the Robertson County orchard has averaged over 4 moths per night during the past week.

**Pecan Weevil** - Initial insecticide treatments for this insect went out this past weekend (August 22-23). A second treatment should be applied 10 days later, around September 2. To control the pecan weevil a minimum of two treatments of carbaryl (Sevin®) will be necessary.

The important question in a pecan weevils management program is whether a third treatment will be necessary. If soils in the orchard

are hard from drought, a delay in emergence for some adults may occur. Normally about 10% of the adults will have emerged by August 22, 50 % emerged by September 1 and 90% emerged by September 8th provided there is no delay from drought.

It is important that some type of adult monitoring system be incorporated into a pecan weevil management program. One of the more common methods used is limb jarring. Although this method does not tell you the density of the weevil with in the canopy it will tell you they are present in the orchard.

## Beneficial Insects - Syrphid Flies

In the last three newsletters I've given a brief description of a few beneficial insects from the order Hemiptera which contains the true bugs. For this newsletter I've change to the order Diptera which contains the flies. Several species of Syrphid Flies, sometimes referred to as Flower Flies can be found in pecan orchards.

The adult syrphid fly, Figure 1, is brightly colored and often resembles a small wasp or bee.

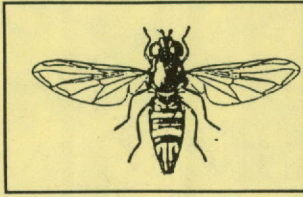


Figure 1: Adult Syrphid Fly *Allograpta obliqua* (Say)

Adults syrphids can be found hovering around flowers and have the habit of darting away when disturbed then returning in a few minutes for another look.

It is the larvae of this insect which is the beneficial stage. The legless larvae or maggots are predacious on aphids and other small soft bodied insects and are often found around aphid colonies. Upon completion of larval development pupation will take place on the foliage.

**Black Pecan Aphids** - Black pecan aphids were reported to be heavy in the Uvalde area last week. In most of the orchard I've visited over the past couple weeks I have been able to find some black aphids. The problems I have observed have been controlled with insecticides applied for the hickory shuckworm, but black aphids can be a problem later in September. It will be important to watch for this insect up through September. Infestations of this insect can cause premature defoliation will effect the trees ability to store carbohydrates for the following year.

## Diseases

**Stem End Blight** - Most of the drop I have observed is from this

disease. If there are black lesions in the shuck and the inside of the pecan has turned black it is probably due to this disease. It is to late to control this problem now. A benomyl fungicide at the initiation of the water stage will help control this problem.

## Around The State

**Gonzales County** - Insecticide treatments for the hickory shuckworm were initiated around mid-August. Few black pecan aphids but no serious problem. Some scab problems reported on Desirable. A light general shower occurred August 14-15. Native crop is light.

**Navarro County** - Some black pecan aphids appearing. Weevil traps placed in an orchard west of Corsicana have caught very few weevils as of August 21. Area is fairly dry and experiencing cool temperatures. Overall the crop is light.

**Pecos County** - Area has an average crop. A few black pecan aphids can be found. Hickory shuckworm activity is picking up.

**Robertson County** - Hickory shuckworm trap catches are very light averaging less than 0.33 moths per night but black light trap catches are averaging over 4 moths per night. Yellow aphids a light. No third generation casebearer activity observed.

**Southwest Texas** - Black pecan aphid is heavy in Uvalde where 30-50% of the foliage in town has dropped. Some drop occurred due to stem end blight.

**Wharton County** - Scab is very heavy across the county. Some

drop reported from stem end blight. No black aphid problems at this time. Crop is fairly light

## Upcoming Meetings

### September 8

**Galveston County** - Fall Field Day. Dr. William Johnson, CEA Galveston County. 713-337-2575

### September 8

**Brazoria County** - Fall Field Day. Waverly Jefferson, CEA Brazoria County. 409-849-5711 Ext.1558.

### September 10

**Guadalupe County** - Fall Field Day. Gus Person, CEA Guadalupe County. 512-379-1972

### September 12

**Washington County** - Fall Field Day. Spencer Tanksley CEA Washington County. 409-836-6128

**Texas Pecan Show Results** - Enclosed are the results from the State Pecan show held during the Texas Pecan Growers meeting last month in Seguin.

\*\*\*\*\*

The information given herein is for educational purposes only. References to commercial products or trade names are made with the understanding that no discrimination is intended and no endorsement by the Cooperative Extension Service is implied.

\*\*\*\*\*

**1991 TEXAS STATE PECAN SHOW RESULTS**

**COMMERCIAL DIVISION**

**GRAND CHAMPION**

A.F. Treiber, Kerr County, "Cheyenne" - 44.72/lb., 60.03 %K

**RESERVE CHAMPION**

Ray Arrendondo, Terrell County, "Wichita" - 38.52/lb., 65.22 %K

**CLASSIC DIVISION**

**GRAND CHAMPION**

Luling Foundation, Gonzales County, "Schley" - 46.44/lb., 61.25 %K

**RESERVE CHAMPION**

Luling Foundation, Gonzales County, "Evans" - 58.10/lb., 57.91 %K

**NATIVE DIVISION**

**GRAND CHAMPION**

Alice Janak, Lavaca County, "Native" - 60.97/lb., 56.25 %K

**RESERVE CHAMPION**

Franklin Bohuslav, Lavaca County, "Native" - 78.14/lb., 58.25 %K

**VARIETY AWARDS - COMMERCIAL DIVISION**

<u>GROWER</u>	<u>COUNTY</u>	<u>#/LB.</u>	<u>%KERNEL</u>	<u>AWARD</u>
<b>APACHE</b>				
Preston Lucas	Wilbarger	47.77	60.93	1st
C & C Farms	Eastland	44.96	55.45	2nd
Joe Burton	Wichita	52.05	57.75	3rd
<b>BURKETT</b>				
Marjorie Kellmermeir	Tom Green	36.87	57.07	1st
Carl Zipperle	Wilbarger	41.00	59.28	2nd
Wayne Ward	Llano	40.42	57.85	3rd
<b>CAPE FEAR</b>				
Walter Williams	DeWitt	37.04	55.02	1st
Doug Hewett	Navarro	36.47	53.46	2nd
George Madden	Bastrop	37.02	52.50	3rd
<b>CADDO</b>				
Charlie Ramsey	Lamar	57.68	62.12	1st
Dan L. Childress	Eastland	58.90	55.75	2nd
Dinsmoor Brothers	Atascosa	58.15	56.73	3rd
<b>CHEYENNE</b>				
A.F. Treiber	Kerr	44.72	60.03	1st CH
Nueces River Pecans	Zavala	40.86	59.50	2nd
Chester Funderberg	Uvalde	43.71	58.54	3rd
<b>CHOCTAW</b>				
John Doerfler	Williamson	33.90	57.20	1st
Roy Brannan	Comanche	36.85	59.90	2nd
Walter Williams	DeWitt	34.30	58.84	3rd

VARIETY AWARDS - COMMERCIAL DIVISION

GROWER	COUNTY	#/LB.	%KERNEL	AWARD
<b>COMANCHE</b>				
A.F. Treiber	Kerr	39.41	52.14	1st
Dayne Davis	Kimble	38.60	54.40	2nd
W.E. Holland	Llano	35.20	52.83	3rd
<b>DESIRABLE</b>				
Buckley Pecan Farm	Bell	36.74	55.08	1st
Edna Mae Post	DeWitt	33.52	52.58	2nd
Darwin Karkoska	Travis	32.74	52.47	3rd
<b>FORKERT</b>				
Dinsmoor Brothers	Atascosa	39.28	62.20	1st
Harold Graf	Wharton	39.95	62.82	2nd
W.E. Holland	Llano	44.45	60.81	3rd
<b>GRAKING</b>				
Dinsmoor Brothers	Atascosa	28.89	52.39	1st
Walter Williams	DeWitt	29.94	55.29	2nd
Zinsmeyer Pecan Orch.	Medina	31.83	53.72	3rd
<b>GRATEX</b>				
James Rother	Victoria	38.86	64.90	1st
Orville Gaugler	Victoria	40.08	65.43	2nd
Hamman Ranch	Real	45.64	65.51	3rd
<b>KIOWA</b>				
A.F. Treiber	Kerr	35.11	58.23	1st
Horace Brown	Edwards	37.14	59.16	2nd
Paint Creek Ranch	Kimble	32.83	58.91	3rd
<b>MAHAN</b>				
Fry Pecans	Fort Bend	33.10	57.96	1st
Kernell Moritz	Victoria	32.66	58.71	2nd
Chester Funderberg	Uvalde	32.15	56.17	3rd
<b>MARAMEC</b>				
Paul Muhle	Bastrop	38.82	58.55	1st
A.F. Treiber	Kerr	42.30	58.30	2nd
Joe Dubray	Medina	39.74	59.46	3rd
<b>MOHAWK</b>				
J.L. Greer	Edwards	29.95	59.26	1st
Mrs. Carl Zipperle	Wilbarger	29.73	59.64	2nd
El Monte Ranch	DeWitt	32.17	59.69	3rd
<b>PAWNEE</b>				
Horace Brown	Edwards	42.07	60.18	1st
Clinton Bourquin	Medina	37.48	59.60	2nd
Harold & Jason Pape	Gonzales	36.06	59.91	3rd

VARIETY AWARDS - COMMERCIAL DIVISION

GROWER	COUNTY	#/LB.	%KERNEL	AWARD
<b>SAN SABA IMPROVED</b>				
Wade Schmitzinsky	Gillespie	64.04	59.81	1st
John Warlick	Bastrop	62.26	60.90	2nd
Rio Bravo Farms	El Paso	84.62	59.32	3rd
<b>SHAWNEE</b>				
James Rother	Victoria	39.77	59.26	1st
David Bohuslav	Lavaca	43.18	59.06	2nd
J.L. Greer	Edwards	42.57	58.57	3rd
<b>SHOSHONI</b>				
Upton Co. Courthouse	Upton	38.40	56.90	1st
Orville Gaugler	Victoria	37.64	56.71	2nd
Horace Brown	Edwards	43.33	55.06	3rd
<b>SIOUX</b>				
Chester Funderberg	Uvalde	58.67	61.71	1st
Leonell C. Post	DeWitt	61.03	60.58	2nd
Charles W. Green	Midland	56.41	64.12	3rd
<b>STUART</b>				
Trish Ara	Gonzales	37.38	49.46	1st
Chester McCown	Victoria	36.36	49.60	2nd
Billy Olle	Atascosa	37.91	48.27	3rd
<b>TEJAS</b>				
R. & T. Cooper	Crane	51.12	57.98	1st
John Pawelek	Atascosa	55.71	56.82	2nd
Harold & Jason Pape	Gonzales	57.26	57.03	3rd
<b>WESTERN</b>				
R.A. White	Martin	55.30	64.71	1st
Chester Funderberg	Uvalde	49.88	59.13	2nd
Horace Brown	Edwards	50.76	60.22	3rd
<b>WICHITA</b>				
Ray Arrendondo	Terrell	38.52	65.22	1st RC
Charles W. Green	Midland	42.78	66.31	2nd
Chester Funderberg	Uvalde	45.65	64.51	3rd

VARIETY AWARDS - CLASSIC DIVISION

GROWER	COUNTY	#/LB.	%KERNEL	AWARD
<b>BARTON</b>				
Mrs. Carl Zipperle	Wilbarger	40.14	59.711	1st
Orville Gaugler	Victoria	40.55	63.13	2nd
C & C Farms	Eastland	46.35	57.63	3rd
<b>BRAKE</b>				
Orville Gaugler	Victoria	52.20	60.09	1st
Harold Reagan Schmidt	Mason	51.25	59.01	2nd
Gus Kieschnick	Travis	56.48	58.21	3rd
<b>CHEROKEE</b>				
Davis Pecan Orchard	Midland	49.38	57.45	1st
Central Texas Pecan	Comanche	41.75	54.13	2nd
Hilmer Boenig	Gaudalupe	51.01	51.26	3rd
<b>CHICKASAW</b>				
Harold & Jason Pape	Gonzales	57.14	55.06	1st
Woodward Farms	Runnels	64.18	53.50	2nd
Ray Ponton	Williamson	75.19	48.93	3rd
<b>ELLIOT</b>				
Plantation Pecan	Bastrop	58.23	52.16	1st
Alta Mae Bush	Wichita	58.58	51.05	2nd
Clarence Wurzbach	Medina	63.37	50.81	3rd
<b>GRABOHL</b>				
Dinsmoor Brothers	Atascosa	46.05	58.67	1st
Madden Pecan & Fruit	Bastrop	43.31	55.51	2nd
A.F.Treiber	Kerr	44.96	55.37	3rd
<b>GRACROSS</b>				
Doug Hewett	Navarro	38.01	57.62	1st
Madden Pecan & Fruit	Bastrop	42.64	56.13	2nd
Adolph Kutach	Wharton	35.03	55.58	3rd
<b>GRAZONA</b>				
Charles W. Green	Midland	35.57	57.78	1st
James Rother	Victoria	37.09	56.87	2nd
Zinsmeyer Pecan Orch.	Medina	36.69	54.12	3rd
<b>IDEAL</b>				
TAMU Center	Tom Green	64.34	62.67	1st
James Lewis	El Paso	70.86	61.11	2nd
<b>IMPERIAL</b>				
Royce Burnett	Upton	27.84	58.72	1st
E.C. Nitschmann	Victoria	28.13	54.90	2nd
Dinsmoor Brothers	Atascosa	28.45	55.46	3rd

VARIETY AWARDS - CLASSIC DIVISION

GROWER	COUNTY	#/LB.	%KERNEL	AWARD
<b>JOHN GARNER</b>				
Donna Freisen	Terrell	52.48	66.21	1st
R.A. White	Martin	52.82	66.12	2nd
Helen Williams	Ward	60/94	64.89	3rd
<b>MCCULLEY</b>				
W.E. Holland	Llano	44.74	57.02	1st
Kimberly Holland	Kerr	46.79	57.22	2nd
Hrkey Pecans	San Saba	52.35	59.01	3rd
<b>MELROSE</b>				
Crockett Leyendecker	Colorado	53.84	57.44	1st
Florian Pawlak	Seguin	49.18	55.12	2nd
Thomas Ognoski	Washington	50.69	51.40	3rd
<b>OCONEE</b>				
Charlies Goertz	Travis	48.11	58.47	1st
Texas Ocan Farm	Comanche	41.12	46.29	2nd
<b>ODOM</b>				
Raymond Zajicek, Sr.	Bell	42.53	58.27	1st
Anton Anderle	Milam	38.26	54.73	2nd
Lee Roy Fritz	Washington	52.48	53.12	3rd
<b>PODSEDNIK</b>				
James Rother	Victoria	22.74	53.21	1st
Doug Hewett	Navarro	24.37	55.24	2nd
Julius Technik	Lavaca	24.75	51.95	3rd
<b>SCHLEY</b>				
Luling Foundation	Gonzales	46.44	61.25	1st CH
Price Gloor	Victoria	43.35	59.70	2nd
Orville Gaugler	Victoria	44.06	60.58	3rd
<b>SUCCESS</b>				
Luling Foundation	Gonzales	36.10	54.811	1st
Vernon Puls	Gaudalupe	33.98	53.08	2nd
Roy Johnson	Victoria	37.06	54.22	3rd
<b>TEXAS PROLIFIC</b>				
Horace Brown	Edwards	53.08	58.40	1st
Gordon Griffith	Wichita	48.47	53.25	2nd
Kermit Crenwelge	Gillespie	64.44	50.82	3rd
<b>TEXHAN</b>				
Arno Neumann	Gaudalupe	50.55	55.58	1st
Olan Tisdale	San Saba	51.62	55.42	2nd
Alvin Picka	Brazoria	53.41	57.08	3rd

VARIETY AWARDS - CLASSIC DIVISION

<u>GROWER</u>	<u>COUNTY</u>	<u>#/LB.</u>	<u>%KERNEL</u>	<u>AWARD</u>
<b>KNOWN HYBRIDS</b>				
Olan Tisdale	San Saba	44.92	63.86	1st
Schley & McCulley				
Harold Graf	Wharton	44.33	60.23	2nd
53-9-100				
Dinsmoor Brothers	Atascosa	43.49	59.65	3rd
<b>VARIETY SEEDLINGS</b>				
Wolney Solbrig	Gillespie	41.42	60.24	1st
D.D. Johnston	Howard	47.40	63.34	2nd
Horace Brown	Edwards	56.92	63.64	3rd