

2
TA 265.6

P 331
92/9



TEXAS AGRICULTURAL
EXTENSION SERVICE

Bill Ree

Bill Ree, Extension Pest Management- Pecans
Jerral D. Johnson, Extension Plant Pathologist
George Ray McEachern, Extension Horticulturist
Charles Cole, Extension Entomologist

Texas Pecan Pest Management Newsletter



Government Publications
Texas State Documents

September 18, 1992
92-9

✓ OCT 23 1992

General Situation

Harvest of early maturing varieties is underway in much of the southern part of the state. In the Winter Garden area (Uvalde and surrounding counties) harvest of Pawnee is complete or nearly so. Some harvest of Pawnee and Shoshoni has occurred in Bastrop county. Shuck split of Pawnee was been reported this week as far north as San Angelo.

Most insect and disease problems are over at this time, although producers in the northern part of the state still need to watch for black aphids and stink bugs.

Insects

Black Pecan Aphids: Last week moderate to heavy black pecan aphid populations were observed in Guadalupe and Maverick Counties. During visits to these areas the question was brought up as to how late in the season should control measures for this insect be applied. A rule of thumb would be to control this pest up to 4 - 6 weeks prior to the average first frost date.

One situation which may occur is the need to control black aphids close to harvest. Malathion can be used up to the day of harvest and endosulfan (Phaser®, Thiodan®) can be used up to shuck split.

Beneficials - The Spiders

Depository
Dallas Public Library

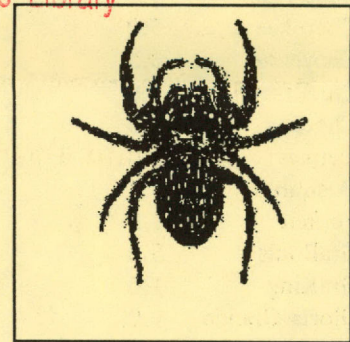
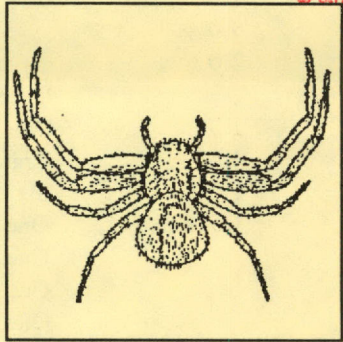


Figure 1. Crab Spider

Figure 2. Jumping spider

Generally when people think of beneficials the first thing that comes to mind are lacewings and lady beetles. However, spiders also play an important role in biological control. Although they are general predators their beneficial aspect out weights any negative factors.

In a study conducted during 1985 and 86 at the Adriance Orchard, Texas A&M, by Suvarian Bumroongsook, spider predation in pecan appeared to be important in biological control of blackmargined aphids.

During the study, 42 species of spiders were collected during weekly inspections of pecans. Spiders collected included both hunting and web making spiders. Of the species collected, 26 species were observed to feed on blackmargined aphids.

In feeding studies conducted in the field, spiders were observed to consume from 3.8 to 21.2 aphids per day, depending upon the species. In laboratory feeding studies, spiders consumed 1.8 to 36.6 aphids per day.

The appetite of spiders for aphids is modest when compared to lacewings and lady beetles but because spiders are not as apt to disperse during periods of low aphid populations their presence in pecans during periods of low populations.

Government Publications
Texas State Documents

OCT 23 1992

Depository
Dallas Public Library

Diseases

The following ratings on susceptibility of pecan varieties to pecan scab in east Texas were made available by Dr. George Philly, Extension Plant Pathologist, Overton, Texas and Mr. Glenn Huddleston, County Extension Agent, Anderson County.

Location: Thurman Gibson Orchard, Palestine, TX Ratings conducted September 9, 1992

<u>Variety</u>	<u>Nut Rating</u>	<u>Leaf Rating</u>	<u>1991 Nut Rating</u>	<u>Comments - 1992</u>
Apache	5.0	2.0		One tree rated
Brake/Candy	1.0	1.0		One tree rated
Caddo	1.0	1.0		Few pecans
Cape Fear	1.0	1.0	1.5	One cluster rated a 3, sparse foliage
Cherokee	5.0	1.0	5.0	
Cheyenne	3.5	1.0	2.0	
Chickasaw	1.0	1.0		Over produces, pecans don't fill
Choctaw	1.3	1.0	1.3	One cluster rated 5
Delmas	5.0	3.5	4.0	Trace of downy spot
Desirable	3.2	1.0	1.0	Six trees rated
Forkett	1.5	1.0	1.5	One tree rated
GraBohls	5.0	2.0		One tree rated
GraKing	1.0	1.0		One tree with few pecans
Gloria Grande	1.0	1.0		One tree rated
Houma	-			No production, young tree
Imperial	2.5	1.0	2.0	One tree rated
Kiowa	2.1	1.0	3.0	Six trees rated
Mahan	5.0	1.0		One tree rated
Mohawk	2.2	1.0		
MoneyMaker	1.3	1.0	1.0	
Oconee	1.0	1.0		One tree rated
Osage	1.0	1.0		One tree rated
Pabst	1.0	1.0		One tree rated
Pawnee	3.1	1.0	1.5	Two trees rated, many clusters clean
Rome	1.5	1.0		
Schley	4.8	2.2		
Shawnee	2.6	1.0		
Shoshoni	1.92	1.3		One cluster rated 4
Sioux	3.0	1.0		One tree rated, few pecans
Stuart	1.0	1.0	1.5	
Tejas	5.0	3.0		One tree rated
Tesche	1.0	1.0		
Texas Giant	1.0	1.0		One tree rated
Van Demon	1.0	1.0		
Wichita	5.0	1.0	5.0	One tree rated
53-9-100	1.75	1.0		One tree rated
61-6-67	1.0	1.0		One tree rated
64-11-17	2.0	1.0		One tree rated, shuck split
49-20-112	1.0	1.0		One tree rated

Rating: 1 = no disease; 5= severe infestation

Fungicide spray schedule, 1992. April 4 - Orbit, April 21 - Orbit, May 21 - Orbit, July 22 - Benlate, August 10 - Supertin, September 4, Supertin. Orchard was not sprayed in 1991 - light crop.

Pecan Variety Ratings*

Location: L&M Farms, Palestine, TX

Variety	1992 Nut Rating	1991 Nut Rating	Comments - 1992
Cape Fear	1.0	No Crop	
Cheyenne	1.3	1.37	6 Trees rated
Chickasaw	2.4	No Crop	2 Trees rated
Choctaw	2.35	1.25	5 trees rated
Desirable	4.4	4.7	6 trees rated
Kiowa	4.2	4.1	6 trees rated
Mohawk	2.8	4.0	
Shawnee	4.0	5.0	
Shoshoni	2.9	2.2	
Sioux	3.25	no Crop	
Sumner	1.5	-	1 tree rated
Tejas	5.0	No Crop	2 trees rated
Wichita	5.0	5.0	

* Ratings are an average of three trees unless noted. 1 = no disease; 5 = sever infection
 Fungicide spray schedule: April 4 - Orbit, April 18 - Orbit, May 15 - Topsin M, June 4 - Orbit (Wichita only),
 June 27 - Benlate, July 23 - Topsin M, August 17 - Supertin, September 5 - Supertin.

OOOPS

In my last letter I inadvertently omitted the winners of the native division at the state pecan show.

VARIETY AWARDS - NATIVE DIVISION				
GROWER	COUNTY	#/LB	%KERNEL	AWARD
NATIVE				
Alice Janak	Lavaca	60.97	56.25	1st CH
Frank Bohuslav	Lavaca	78.14	58.25	2nd RC
Bradley Fritz	Washington	59.05	54.36	3rd
STATE CHAMPION - SMALLEST NATIVE				
Jerry Lackey	Lavaca	799.82	0.00	1st
Austin Barry	Navarro	509.55	0.00	2nd
Joshua Dawn	Kimble	397.46	0.00	3rd

Around The State

El Paso County: A few producers are spraying for black aphids. All varieties are full shell hardening and about 30 days from shuck split. Producers are preparing orchard floors for harvest. Good crop for the area.

Maverick County: Improved varieties look good. Part of the county received rain on 9/10 and 9/11. Black aphids were observed to be a problem in an orchard near Eagle Pass and will have to be treated.

Tom Green County: Shuck split was observed this week on Pawnee. Late maturing varieties are finished filling. Some black aphid problems and scorch mite problems have been observed. Scorch mites seem to be a problem in orchards where pyrethroid insecticides were used. Area has not had a significant rain for about 3 weeks.

Wichita County: Native crop looks good along the Red River, improved varieties also look good. No aphid problems reported as of 1st week.

Upcoming Meetings

September 28

Fayette County Field Day
Larry Nickel, CEA - Fayette Co.
409-968-5831

September 29

Robertson County Area Wide
Pecan Field Day
Ed Schneider, CEA - Robertson
Co.
409-828-4270

The information given herein is for educational purposes only. References to commercial products or trade names is made with the understanding that no endorsement by the Cooperative Extension Service is implied.
