

Z
L250.8
064437

28:05

Border Business Indicators

Government Publications
Texas State Documents

OCT 27 2004

Depository
Dallas Public Library

Texas Center for Border Economic and Enterprise Development

Vol. 28 No. 5 • May 2004

U.S.-Mexico Trade: Exports and Imports Up in Quarter 1 2004

In the first quarter of 2004 figures for U.S.-Mexico trade marked an increase over the same period in 2003 (See Table 1). If this trend continues, 2004 may be a bright point after three years of almost flat end-of-year totals (2001-2003). In the year 2000, trade between the countries had peaked to a historical high of \$247.6 billion in total trade.

The difference in this year's first quarter is the increase in U.S. exports to Mexico. The previous three years for the same periods had lackluster increases and in some months decreases.

U.S. imports, on the other hand, have remained consistently on the increase. Even in the last three years imports have had increases.

Although U.S. exports were up, the U.S. registered a trade deficit with Mexico (\$10.5 billion), but was less compared to Q1 2003 (\$10.8 billion).

Table 3 provides a look at the total dollar value of trade activity—U.S. exports plus U.S. imports—at the individual border ports of entry on the U.S.-Mexico border for Quarter 1 2004. A comparison with the same period in 2003 is also provided.

On the back page, Tables 4 and 5 provide the dollar value of U.S. exports to Mexico and U.S. imports from Mexico for the same time periods.

In subsequent issues of the *Border Business Indicators*, these trends in trade activity will be reviewed. In addition, the composition of trade or type of goods that comprise these dollar values will be examined.

—B. Garcia

Table 1
Total U.S.-Mexico Trade
Q1 2003 vs. Q1 2004
All figures are in Billions of U.S. Dollars

	Q1 2003	Q1 2004	Absolute		% Change	
			\$ Change	03 vs. 04	03 vs. 04	03 vs. 04
Exports	22.7	25.9	3.2	14.1		
Imports	33.5	36.4	2.9	8.7		
Total	56.2	62.3	6.1	10.9		

The trade of goods between the U.S. and Mexico has predominately been at the border. Historically, the percentage of the dollar value of goods in trade between them has been in the 80s. The first quarter of 2004 showed that percentage to be 83.0 percent.

The border continues to be the conduit between the trading partners. Table 2 exhibits the dollar value of the trade activity which took place on the border in this first quarter.

Table 2
Total U.S.-Mexico Trade Activity via U.S.-Mexico Border Ports
Q1 2003 vs. Q1 2004
All figures are in Billions of U.S. Dollars

	Q1 2003	Q1 2004	Absolute		% Change	
			\$ Change	03 vs. 04	03 vs. 04	03 vs. 04
Exports	19.0	22.0	3.0	15.8		
Imports	27.0	29.6	2.6	9.6		
Total	46.0	51.7	5.7	12.4		

Table 3
U.S.-Mexico Total Trade Activity via U.S.-Mexico Border by Port
Q1 2003 vs. Q1 2004

Port	Q1 2003	Q1 2004	Absolute		% Change	
			\$ Change	03 vs. 04	03 vs. 04	03 vs. 04
Brownsville	2,582,010,308	2,660,631,905	78,621,597		3.0	
Del Rio	709,262,599	706,313,701	-2,948,898		-0.4	
Eagle Pass	1,300,104,818	1,622,184,524	322,079,706		24.8	
Laredo	18,103,799,218	20,986,958,227	2,883,159,009		15.9	
Hidalgo	3,371,780,385	3,733,631,938	361,851,553		10.7	
Rio Grande	44,397,961	50,361,086	5,963,125		13.4	
Progreso	29,111,959	31,115,955	2,003,996		6.9	
Roma	30,902,899	18,623,628	-12,279,271		-39.7	
Edinburg Airport	7,919	0	-7,919		-100.0	
El Paso	9,596,396,931	10,546,241,686	949,844,755		9.9	
Presidio	51,610,971	84,466,798	32,855,827		63.7	
Fabens	139,080	1,558,674	1,419,594		1,020.7	
Columbus	10,244,213	10,074,428	-169,785		-1.7	
Santa Teresa	254,834,381	282,406,106	27,571,725		10.8	
Santa Teresa Airport	0	5,150	5,150		-	
Andrade	349,153	493,509	144,356		41.3	
Calexico	2,078,443	858,957	-1,219,486		-58.7	
San Ysidro	13,885,691	13,061,519	-824,172		-5.9	
Tecate	222,515,422	218,196,915	-4,318,507		-1.9	
Otay Mesa Station	4,505,204,533	5,026,451,856	521,247,323		11.6	
Calexico-East	2,090,508,855	2,117,385,347	26,876,492		1.3	
Douglas	119,309,501	175,911,717	56,602,216		47.4	
Lukeville	672,832	3,953,375	3,280,543		487.6	
Naco	9,669,491	18,850,607	9,181,116		94.9	
Nogales	2,718,507,543	3,122,872,815	404,365,272		14.9	
Sasabe	0	7,350	7,350		-	
San Luis	248,794,278	238,376,003	-10,418,275		-4.2	
Total	46,016,099,384	51,670,993,776	5,654,894,392		12.3	

Continued on Back Page

Need More Detailed Information?

For more detailed information regarding border crossings, economic indicators and trade activity, visit the Center's web site:

<http://texascenter.tamiu.edu>

Technical Reports

The Texas Center's research activities have resulted in a series of technical reports on border economic issues ranging from infrastructure needs and environmental issues to the impact of NAFTA on Texas-Mexico trade relations and future business opportunities.

The Center continues its research tradition with activities spanning those areas involving border trade, business development and economic issues.

New research encompassing areas such as community development, health, culture, education and socioeconomic issues have been added to the series.

Technical Reports are freely available on-line for download in PDF format, unless otherwise noted.

The *Border Business Indicators* (ISSN 1091-9104) is published by the Texas Center for Border Economic and Enterprise Development, at Texas A&M International University in Laredo, Texas.

Dr. Ray M. Keck, III
President, Texas A&M International University

Dr. J. Michael Patrick
Director, Texas Center

Baldomero G. Garcia
Associate Director, Texas Center

Leo Lozano
Database Specialist, Texas Center

S. Saul Solis
Data & Information Specialist, Texas Center

Mahesh Kannan
Student Research Assistant, Texas Center

Further information may be obtained by calling:
TEL. (956) 326-2546
FAX (956) 326-2544

or by writing to the addresses below:

E-mail: texascenter@tamiu.edu
Texas A&M International University
Texas Center
5201 University Boulevard
Laredo, TX 78041-1900

Produced by the TAMIU Print Shop
on Recycled Paper



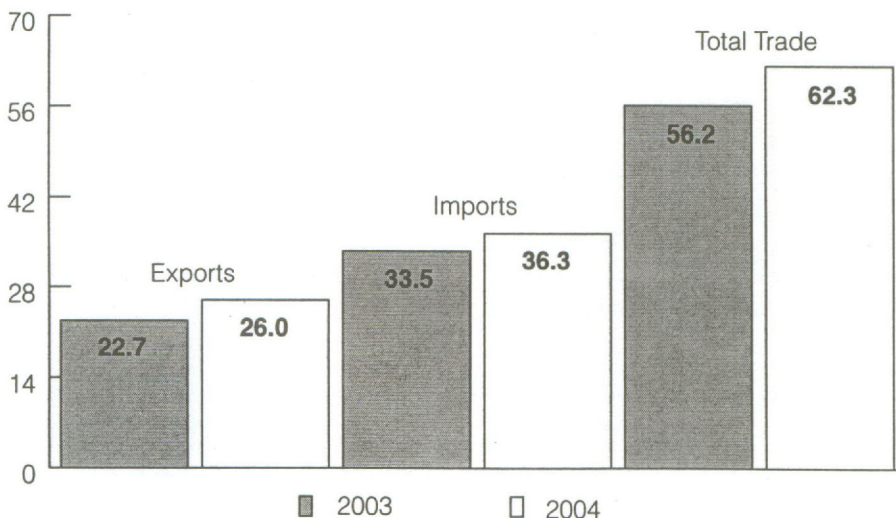
Note from the Director

Indicators of border business activity for March 2004 year-to-date (YTD) demonstrated fourteen indicators increased and eight decreased. 2004 YTD comparisons to 2003 reported for the border are listed below:

- Pedestrian bridge crossings into Mexico were down 0.01 percent.
- Pedestrian bridge crossings into Texas were up 0.3 percent.
- Vehicle bridge crossings into Mexico rose 0.9 percent.
- Vehicle bridge crossings into Texas rose 1.5 percent.
- Truck bridge crossings into Mexico gained 6.8 percent.
- Truck bridge crossings into Texas gained 5.7 percent.
- Rail car bridge crossings into Mexico went up 2.2 percent.
- Rail car bridge crossings into Texas went down 2.8 percent.
- Revenues collected by U.S. Customs decreased of 13.9 percent.
- Revenues collected by U.S. bridge operators registered a gain of 8.2 percent.
- Tourist visas issued for entry into Mexico were up 11.7 percent.
- Total employment was up 2.9 percent, with 13,803 jobs gained. The average unemployment rate for the border in March 2004 was 8.6 percent.
- Total building permits issued fell 4.0 percent.
- Total building permit values increased 16.1 percent.
- Power connections in service for residential were up 2.9 percent, commercial were up 3.0 percent and industrial were down 6.9 percent.
- Air passenger arrivals were up 14.7 percent, and departures were up 15.0 percent.
- Total cargo for the Port of Brownsville decreased 20.3 percent.
- Inbound cargo for the Port of Corpus Christi went down 3.7 percent, and outbound cargo went down 0.5 percent.

U.S.-Mexico Trade at a Glance

March 2004 Year-to-Date
(In Billions of U.S.\$)



Source: U.S. Census Bureau, Foreign Trade Division, Data Dissemination Branch

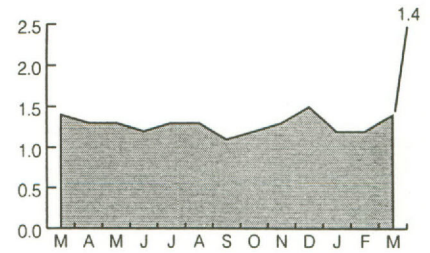
Disclaimer: Please note that the data contained in this and all issues of the *Border Business Indicators* is collected from different government agencies and private sources. Readers should note that different data-collecting agencies use dissimilar, often conflicting, techniques in collecting and compiling the information they publish. Because of this lack of uniformity, comparing different data could result in erroneous conclusions. While we are most grateful to our sources for their cooperation, we cannot assume responsibility for the comparability of the data.

Pedestrian Bridge Crossings from Texas to Mexico

City	Mar 04	%Share	03 vs. 04		YTD 03	YTD 04	%Share	YTD %Chg
			%Chg					
Brownsville	227,239	16.3	-1.7		608,520	597,042	15.6	-1.9
Del Rio	11,814	0.8	36.3		16,813	22,840	0.6	35.8
Eagle Pass	52,652	3.8	1.3		138,260	143,553	3.8	3.8
El Paso	426,432	30.7	-1.2		1,286,428	1,173,027	30.7	-8.8
Harlingen	143	0.0	134.4		154	323	0.0	109.7
Laredo	345,043	24.8	-1.9		962,534	980,861	25.7	1.9
McAllen-Hidalgo	119,406	8.6	5.6		306,033	337,929	8.8	10.4
Progreso	193,854	13.9	15.0		464,791	528,332	13.8	13.7
Rio Grande	451	0.0	91.9		1,018	915	0.0	-10.1
Roma	13,522	1.0	-5.3		38,505	37,862	1.0	-1.7
Total	1,390,556	100.0	1.4		3,823,056	3,822,684	100.0	-0.01

Source: U.S. bridge operators in cited cities

Pedestrians into Mexico All Cited Cities
Mar. 2003 vs. Mar. 2004: Up 1.4%
(In Millions)

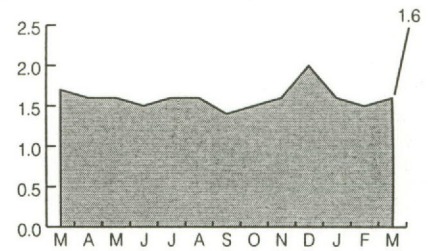


Pedestrian Bridge Crossings from Mexico to Texas

City	Mar 04	%Share	03 vs. 04		YTD 03	YTD 04	%Share	YTD %Chg
			%Chg					
Brownsville	252,839	15.7	-0.1		678,572	671,343	14.4	-1.1
Del Rio	13,732	0.9	20.9		24,258	32,508	0.7	34.0
Eagle Pass	62,492	3.9	-1.6		174,218	174,205	3.7	0.0
El Paso	624,043	38.7	0.6		1,786,344	1,777,133	38.0	-0.5
Laredo	386,110	24.0	-0.5		1,071,352	1,099,608	23.5	2.6
McAllen-Hidalgo	148,747	9.2	2.6		398,003	424,833	9.1	6.7
Presidio	2,306	0.1	4.3		7,014	6,932	0.1	-1.2
Progreso	102,041	6.3	-39.2		467,040	435,061	9.3	-6.8
Rio Grande	1,151	0.1	-19.2		4,154	3,428	0.1	-17.5
Roma	17,584	1.1	-2.0		47,888	49,232	1.1	2.8
Total	1,611,045	100.0	-3.5		4,658,843	4,674,283	100.0	0.3

Source: Oficina de Caminos y Puentes Federales, Mexico

Pedestrians into Texas All Cited Cities
Mar. 2003 vs. Mar. 2004: Down 3.5%
(In Millions)

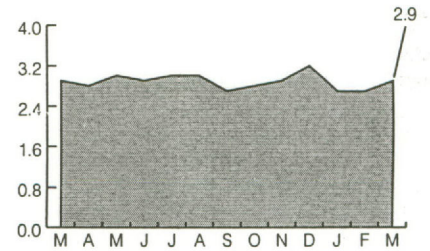


Vehicle Bridge Crossings from Texas to Mexico

City	Mar 04	%Share	03 vs. 04		YTD 03	YTD 04	%Share	YTD %Chg
			%Chg					
Brownsville	580,793	20.0	-0.7		1,684,292	1,663,440	20.1	-1.2
Del Rio	160,757	5.5	-1.5		458,197	455,378	5.5	-0.6
Eagle Pass	279,908	9.6	-0.2		790,673	785,015	9.5	-0.7
El Paso	374,353	12.9	6.4		1,026,674	1,064,138	12.9	3.6
Harlingen	59,236	2.0	3.0		158,214	168,334	2.0	6.4
Laredo	593,639	20.4	7.5		1,587,768	1,668,488	20.1	5.1
McAllen-Hidalgo	461,047	15.9	-1.3		1,360,746	1,327,160	16.0	-2.5
Pharr	147,345	5.1	2.2		418,235	436,626	5.3	4.4
Progreso	102,985	3.5	1.6		289,374	290,339	3.5	0.3
Rio Grande	52,400	1.8	-1.7		151,634	152,278	1.8	0.4
Roma	93,917	3.2	-5.0		280,494	269,978	3.3	-3.7
Total	2,906,380	100.0	1.8		8,206,301	8,281,174	100.0	0.9

Source: U.S. bridge operators in cited cities

Vehicles into Mexico All Cited Cities
Mar. 2003 vs. Mar. 2004: Up 1.8%
(In Millions)

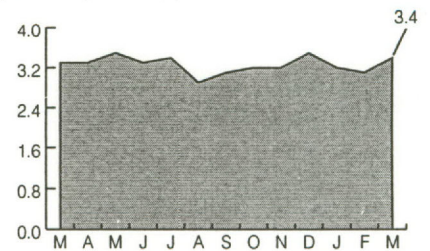


Vehicle Bridge Crossings from Mexico to Texas

City	Mar 04	%Share	03 vs. 04		YTD 03	YTD 04	%Share	YTD %Chg
			%Chg					
Brownsville	583,116	17.0	-0.4		1,690,087	1,672,872	17.3	-1.0
Del Rio	159,878	4.7	-2.1		463,853	454,668	4.7	-2.0
Eagle Pass	291,335	8.5	-0.1		844,685	826,995	8.5	-2.1
El Paso	681,721	19.9	2.9		1,864,739	1,953,720	20.2	4.8
Harlingen	69,229	2.0	2.8		187,110	198,347	2.0	6.0
Laredo	597,480	17.4	3.2		1,702,528	1,717,668	17.7	0.9
McAllen-Hidalgo	429,168	12.5	0.4		1,267,486	1,232,782	12.7	-2.7
Pharr	223,493	6.5	3.5		609,239	633,416	6.5	4.0
Presidio	63,555	1.9	6.9		168,186	183,812	1.9	9.3
Progreso	178,263	5.2	77.5		289,121	365,853	3.8	26.5
Rio Grande	60,931	1.8	-1.0		173,133	175,885	1.8	1.6
Roma	94,644	2.8	-6.5		290,299	278,183	2.9	-4.2
Total	3,432,813	100.0	3.6		9,550,466	9,694,201	100.0	1.5

Source: Oficina de Caminos y Puentes Federales, Mexico

Vehicles into Texas All Cited Cities
Mar. 2003 vs. Mar. 2004: Up 3.6%
(In Millions)



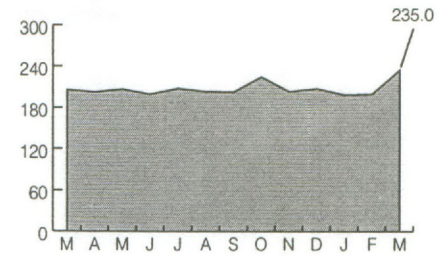
Truck Bridge Crossings from Texas to Mexico

City	Mar 04	%Share	03 vs. 04		YTD 03	YTD 04	%Share	YTD %Chg
			%Chg					
Brownsville	17,828	7.6	4.3		50,034	49,220	7.8	-1.6
Del Rio	5,868	2.5	-10.4		19,059	15,984	2.5	-16.1
Eagle Pass	8,996	3.8	22.7		21,243	25,041	4.0	17.9
El Paso	26,214	11.2	13.9		67,943	71,783	11.3	5.7
Harlingen	3,051	1.3	2.2		8,586	7,995	1.3	-6.9
Laredo	131,020	55.8	15.3		333,279	350,671	55.3	5.2
McAllen-Hidalgo	1,760	0.7	-23.6		6,287	5,055	0.8	-19.6
Pharr	34,495	14.7	24.5		73,273	93,631	14.8	27.8
Progreso	2,243	1.0	9.9		5,739	5,188	0.8	-9.6
Rio Grande	2,485	1.1	23.3		5,566	6,698	1.1	20.3
Roma	1,012	0.4	25.7		2,324	2,663	0.4	14.6
Total	234,972	100.0	14.3		593,333	633,929	100.0	6.8

Source: U.S. bridge operators in cited cities

Note: Figures include loaded and empty trucks. El Paso figures do not include Bridge of the Americas.

Trucks into Mexico All Cited Cities
Mar. 2003 vs. Mar. 2004: Up 14.3%
(In Thousands)



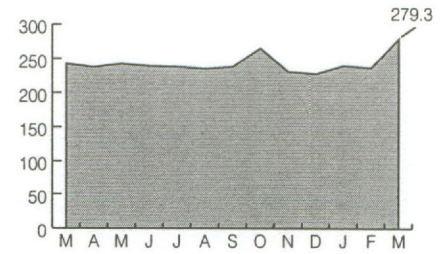
Truck Bridge Crossings from Mexico to Texas

City	Mar 04	%Share	03 vs. 04		YTD 03	YTD 04	%Share	YTD %Chg
			%Chg					
Brownsville	16,816	6.0	4.6		46,840	46,033	6.1	-1.7
Del Rio	5,880	2.1	1.2		17,552	15,979	2.1	-9.0
Eagle Pass	9,207	3.3	23.2		21,442	24,944	3.3	16.3
El Paso	65,943	23.6	24.8		162,307	178,317	23.6	9.9
Harlingen	3,239	1.2	0.0		9,454	8,722	1.2	-7.7
Laredo	126,664	45.3	11.3		339,343	346,257	45.8	2.0
Pharr	44,173	15.8	17.7		102,782	116,845	15.5	13.7
Presidio	686	0.2	42.0		1,365	1,822	0.2	33.5
Progreso	1,978	0.7	25.2		4,647	4,709	0.6	1.3
Rio Grande	3,924	1.4	33.0		7,841	10,406	1.4	32.7
Roma	793	0.3	20.7		1,742	2,075	0.3	19.1
Falcon Heights	8	0.0	-75.8		89	21	0.0	-76.4
Total	279,311	100.0	15.2		715,404	756,130	100.0	5.7

Source: South Texas Customs Management Center, Laredo & U.S. Customs Office of Public Affairs, El Paso

Note: Figures include loaded and empty trucks.

Trucks into Texas All Cited Cities
Mar. 2003 vs. Mar. 2004: Up 15.2%
(In Thousands)



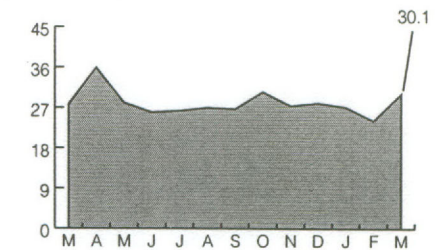
Rail Car Crossings from Texas to Mexico

City	Mar 04	%Share	03 vs. 04		YTD 03	YTD 04	%Share	YTD %Chg
			%Chg					
Brownsville	3,020	10.0	-2.0		9,976	9,039	11.1	-9.4
Eagle Pass	6,918	23.0	-1.5		18,036	17,790	21.9	-1.4
El Paso	N/A	N/A	N/A		N/A	N/A	N/A	N/A
Laredo	20,125	66.9	13.6		51,487	54,403	67.0	5.7
Total	30,063	100.0	8.1		79,499	81,232	100.0	2.2

Source: Railroad companies in cited cities

Note: Figures for El Paso are not available.

Rail Cars into Mexico All Cited Cities
Mar. 2003 vs. Mar. 2004: Up 8.1%
(In Thousands)

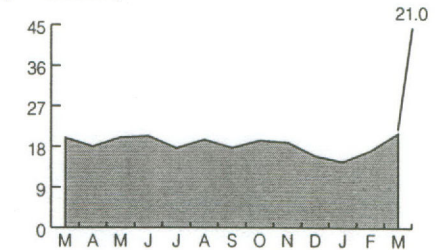


Rail Car Crossings from Mexico to Texas

City	Mar 04	%Share	03 vs. 04		YTD 03	YTD 04	%Share	YTD %Chg
			%Chg					
Brownsville	506	2.4	-67.7		3,661	1,521	2.9	-58.5
Eagle Pass	1,566	7.5	35.5		3,668	4,262	8.1	16.2
El Paso	4,463	21.3	153.3		4,585	7,381	14.0	61.0
Laredo	14,451	68.9	-6.1		42,255	39,514	75.0	-6.5
Total	20,986	100.0	5.6		54,169	52,678	100.0	-2.8

Source: Railroad companies in cited cities & U.S. Customs Office of Public Affairs, El Paso

Rail Cars into Texas All Cited Cities
Mar. 2003 vs. Mar. 2004: Up 5.6%
(In Thousands)

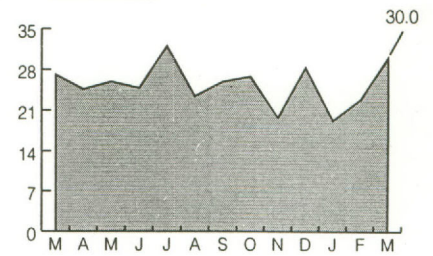


Revenues Collected by U.S. Customs District of Laredo (in U.S.\$)

City	Mar 04	%Share	03 vs. 04		YTD 03	YTD 04	%Share	YTD %Chg
			%Chg					
Brownsville	2,872,005	9.6	91.4		4,542,369	6,549,880	9.1	44.2
Del Rio	82,865	0.3	-53.0		436,282	202,696	0.3	-53.5
Eagle Pass	536,021	1.8	-68.8		8,175,923	2,350,527	3.3	-71.3
McAllen-Hidalgo	3,691,697	12.3	2.8		13,710,528	10,297,791	14.3	-24.9
Laredo	22,648,027	75.5	13.3		56,537,226	52,296,758	72.6	-7.5
Progreso	32,688	0.1	70.6		51,362	78,728	0.1	53.3
Rio Grande	18,545	0.1	-63.4		135,330	54,906	0.1	-59.4
Roma	130,802	0.4	1010.6		33,217	157,478	0.2	374.1
Total	30,012,650	100.0	10.9		83,622,237	71,988,765	100.0	-13.9

Source: South Texas Customs Management Center, Laredo
 Note: Totals may not add up due to rounding.

Customs Revenues for the District of Laredo
 Mar. 2003 vs. Mar. 2004: Up 10.9%
 (In Millions of U.S.\$)

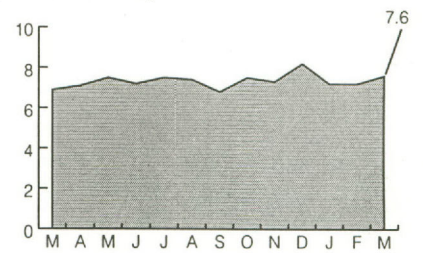


Revenues Collected by U.S. Bridge Operators (in U.S.\$)

City	Mar 04	%Share	03 vs. 04		YTD 03	YTD 04	%Share	YTD %Chg
			%Chg					
Brownsville	809,710	10.6	5.9		2,855,373	3,057,209	13.9	7.1
Del Rio	325,906	4.3	-1.7		926,629	917,955	4.2	-0.9
Eagle Pass	609,736	8.0	-0.7		1,733,795	1,718,750	7.8	-0.9
El Paso	1,163,554	15.2	42.1		2,400,046	3,197,534	14.5	33.2
Harlingen	168,243	2.2	10.4		422,107	465,878	2.1	10.4
Laredo	2,890,849	37.8	11.9		7,477,254	7,940,719	36.0	6.2
McAllen-Hidalgo	854,778	11.2	-1.6		2,517,903	2,450,564	11.1	-2.7
Pharr	607,591	8.0	19.7		1,416,674	1,687,597	7.7	19.1
Roma	207,300	2.7	-3.7		611,605	594,712	2.7	-2.8
Total	7,637,666	100.0	11.4		20,361,387	22,030,917	100.0	8.2

Source: U.S. bridge operators in cited cities
 Note: El Paso figures do not include Bridge of the Americas (Toll-free). Totals may not add up due to rounding.

Bridge Revenues All Cited Cities
 Mar. 2003 vs. Mar. 2004: Up 11.4%
 (In Millions of U.S.\$)

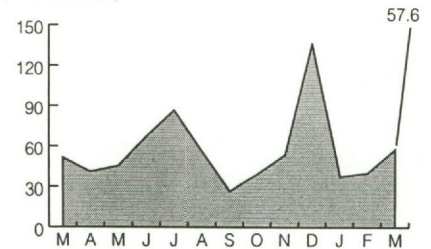


Tourist Visas Issued for Entry into Mexico

City	Mar 04	%Share	03 vs. 04		YTD 03	YTD 04	%Share	YTD %Chg
			%Chg					
Del Rio	718	1.2	-22.1		1,948	3,132	2.3	60.8
El Paso	9,523	16.5	34.1		16,447	20,661	15.3	25.6
McAllen-Hidalgo	15,082	26.2	14.4		31,314	35,391	26.2	13.0
Brownsville	7,316	12.7	19.1		14,867	16,700	12.4	12.3
Laredo	21,381	37.1	4.2		49,232	51,679	38.3	5.0
Eagle Pass	3,562	6.2	4.6		7,085	7,439	5.5	5.0
Total	57,582	100.0	12.3		120,893	135,002	100.0	11.7

Source: Instituto Nacional de Migracion, Mexico

Tourist Visas Issued All Cited Cities
 Mar. 2003 vs. Mar. 2004: Up 12.3%
 (In Thousands)

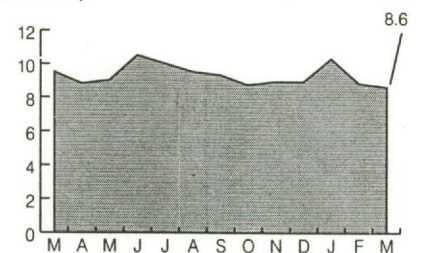


Employment & Unemployment Rates (Texas Border)

City	Employed		%Unemp	Emp Avg		03 vs. 04	
	Mar 04	Mar 04		Mar 04	YTD 03	YTD 04	Emp %Chg
Brownsville	47,903	6,353	11.7	47,722	47,600	-0.3	-122
Del Rio	15,399	1,316	7.9	15,483	15,291	-1.2	-192
Eagle Pass	9,824	2,709	21.6	8,239	9,778	18.7	1,539
El Paso	245,434	19,815	7.5	242,563	245,946	1.4	3,383
Harlingen	27,520	2,160	7.3	27,416	27,346	-0.3	-70
Laredo	75,367	5,340	6.6	70,715	74,940	6.0	4,225
McAllen	53,922	5,238	8.9	49,939	53,729	7.6	3,789
Pharr	16,079	2,794	14.8	14,891	16,021	7.6	1,130
Rio Grande	5,595	1,068	16.0	5,447	5,568	2.2	121
Total	497,043	46,793	8.6	482,416	496,219	2.9	13,803
Texas Unemployment Rate			6.3				
U.S. Unemployment Rate			5.7				

Source: Texas Workforce Commission
 Note: Figures are preliminary and subject to revision. Totals may not add up due to rounding.

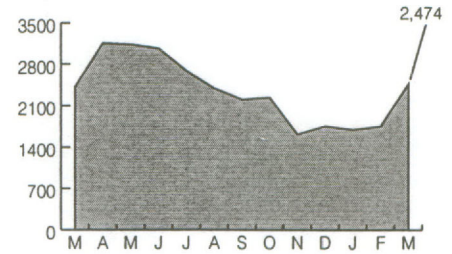
Percent of Unemployment All Cited Cities Combined
 Mar. 2003 vs. Mar. 2004: Down 9.5%
 (In Percent)



Building Permits

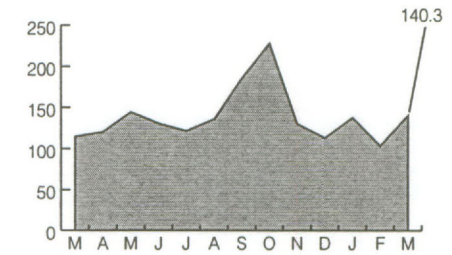
Number	03 vs. 04			YTD			
City	Mar 04	%Share	%Chg	YTD 03	YTD 04	%Share	%Chg
Brownsville	387	15.6	7.2	948	1,015	17.1	7.1
Del Rio	87	3.5	-32.0	295	194	3.3	-34.2
Eagle Pass	53	2.1	35.9	124	107	1.8	-13.7
El Paso	1,278	51.7	-0.8	3,225	2,926	49.4	-9.3
Harlingen	90	3.6	18.4	208	237	4.0	13.9
Laredo	386	15.6	10.3	897	988	16.7	10.1
McAllen	193	7.8	9.0	473	457	7.7	-3.4
Total	2,474	100.0	2.3	6,170	5,924	100.0	-4.0

Building Permits All Cited Cities
Mar. 2003 vs. Mar. 2004
(Number of Permits): Up 2.3%



Dollar Value	03 vs. 04			YTD			
City	Mar 04	%Share	%Chg	YTD 03	YTD 04	%Share	%Chg
Brownsville	27,101,371	19.3	64.6	65,036,632	58,063,040	15.2	-10.7
Del Rio	2,653,299	1.9	156.5	7,238,262	5,355,486	1.4	-26.0
Eagle Pass	4,040,824	2.9	446.4	5,969,401	18,820,963	4.9	215.3
El Paso	49,290,732	35.1	-5.5	118,632,549	139,503,924	36.5	17.6
Harlingen	6,416,584	4.6	-5.9	14,247,052	22,133,893	5.8	55.4
Laredo	33,661,720	24.0	58.7	67,404,308	88,561,301	23.2	31.4
McAllen	17,146,842	12.2	5.7	50,412,078	49,434,195	12.9	-1.9
Total	140,311,373	100.0	22.4	328,940,282	381,872,802	100.0	16.1

(Value of Permits In Millions of U.S.\$): Up 22.4%

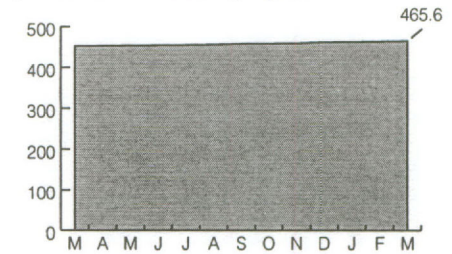


Source: Permit Departments in cited cities
Note: Dollar value totals may not add up due to rounding.

Power Connections (in Service)

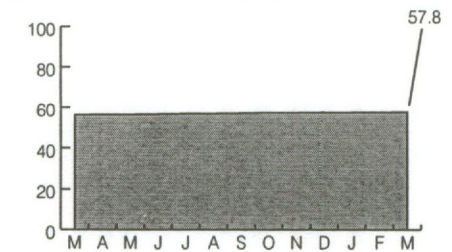
Residential	03 vs. 04			Average		YTD	
City	Mar 04	%Share	%Chg	YTD 03	YTD 04	%Share	%Chg
Brownsville	33,936	7.3	1.8	33,265	33,787	7.3	1.6
Del Rio	14,598	3.1	2.0	14,323	14,591	3.1	1.9
Eagle Pass	10,461	2.2	2.8	10,126	10,442	2.2	3.1
El Paso*	291,559	62.6	2.8	283,031	290,746	62.6	2.7
Harlingen	22,933	4.9	2.8	22,254	22,936	4.9	3.1
Laredo	56,133	12.1	4.0	53,572	56,008	12.1	4.5
McAllen	35,982	7.7	3.9	34,519	35,876	7.7	3.9
Total	465,602	100.0	2.9	451,090	464,386	100.0	2.9

Power Connections All Cited Cities
Mar. 2003 vs. Mar. 2004
(Residential - In Thousands): Up 2.9%



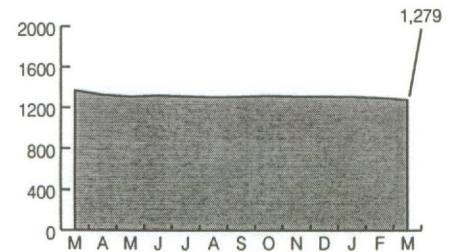
Commercial	03 vs. 04			Average		YTD	
City	Mar 04	%Share	%Chg	YTD 03	YTD 04	%Share	%Chg
Brownsville	4,545	7.9	5.5	4,348	4,530	7.8	4.2
Del Rio	2,286	4.0	-1.1	2,294	2,290	4.0	-0.2
Eagle Pass	1,603	2.8	1.8	1,578	1,597	2.8	1.2
El Paso*	30,449	52.6	3.6	29,333	30,362	52.6	3.5
Harlingen	3,895	6.7	1.2	3,871	3,890	6.7	0.5
Laredo	8,698	15.0	2.1	8,469	8,692	15.1	2.6
McAllen	6,357	11.0	3.3	6,119	6,351	11.0	3.8
Total	57,833	100.0	3.1	56,012	57,712	100.0	3.0

(Commercial - In Thousands): Up 3.1%



Industrial	03 vs. 04			Average		YTD	
City	Mar 04	%Share	%Chg	YTD 03	YTD 04	%Share	%Chg
Brownsville	626	48.9	-12.4	740	640	49.4	-13.6
Del Rio	42	3.3	-6.7	44	42	3.3	-3.1
Eagle Pass	30	2.3	3.4	30	30	2.3	0.0
El Paso*	142	11.1	-0.7	142	145	11.2	1.9
Harlingen	105	8.2	0.0	107	104	8.1	-2.5
Laredo	210	16.4	0.0	210	210	16.2	0.2
McAllen	124	9.7	4.2	119	124	9.6	4.2
Total	1,279	100.0	-6.4	1,392	1,295	100.0	-6.9

(Industrial): Down 6.4%



Source: American Electric Power Company, Brownsville Public Utilities Board & El Paso Electric Company
Note: Totals may not add up due to rounding.
*El Paso power connections were estimated. Data for March 2004 was unavailable.

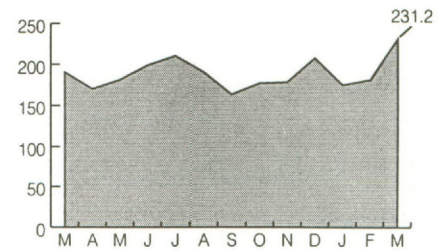
Air Passenger Service Activity (Number of Passengers)

City	Mar 04		03 vs. 04		YTD 03		YTD 04	
	%Share	%Chg	YTD 03	YTD 04	%Share	%Chg		
Brownsville	5,958	2.6	9.0	15,060	16,268	2.8	8.0	
El Paso	148,881	64.4	25.8	310,501	369,091	62.9	18.9	
Harlingen	42,894	18.5	18.3	100,261	107,721	18.4	7.4	
Laredo	6,688	2.9	16.3	16,932	18,882	3.2	11.5	
McAllen	26,822	11.6	8.3	68,940	75,048	12.8	8.9	
Total	231,243	100.0	21.3	511,694	587,010	100.0	14.7	

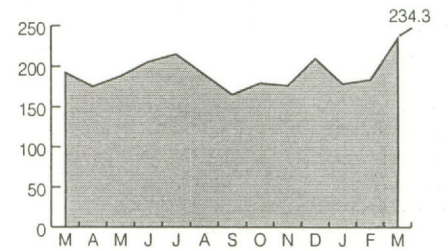
City	Mar 04		03 vs. 04		YTD 03		YTD 04	
	%Share	%Chg	YTD 03	YTD 04	%Share	%Chg		
Brownsville	6,234	2.7	11.9	14,621	16,826	2.8	15.1	
El Paso	149,950	64.0	26.5	315,483	373,462	62.7	18.4	
Harlingen	44,126	18.8	18.4	101,654	110,437	18.5	8.6	
Laredo	6,558	2.8	17.2	16,979	18,946	3.2	11.6	
McAllen	27,455	11.7	8.0	69,323	76,293	12.8	10.1	
Total	234,323	100.0	21.8	518,060	595,964	100.0	15.0	

Source: Airports in cited cities

Air Passenger Activity All Cited Cities
Mar. 2003 vs. Mar. 2004
(Arrivals – In Thousands): Up 21.3%



(Departures – In Thousands): Up 21.8%



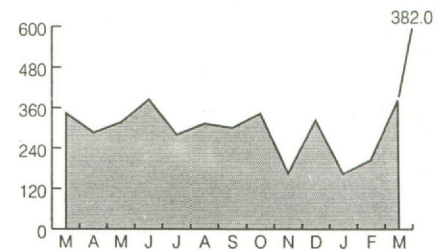
Port of Brownsville (Total Cargo in Metric Tons)

Cargo Type	Mar 04		03 vs. 04		YTD 03		YTD 04	
	%Share	%Chg	YTD 03	YTD 04	%Share	%Chg		
Break Bulk	144,208	37.8	-37.3	564,117	316,218	42.1	-43.9	
Containers	0	0.0	0.0	0	0	0.0	0.0	
Grain Bulk	7,400	1.9	0.0	17,406	21,500	2.9	23.5	
Liquid	12,758	3.3	885.2	5,166	14,770	2.0	185.9	
Machinery	23,859	6.2	3308.4	3,482	37,568	5.0	978.9	
Petroleum	193,734	50.7	74.1	350,561	360,166	48.0	2.7	
Total	381,959	100.0	11.3	940,732	750,222	100.0	-20.3	

Source: Port of Brownsville

Note: Totals may not add up due to rounding.

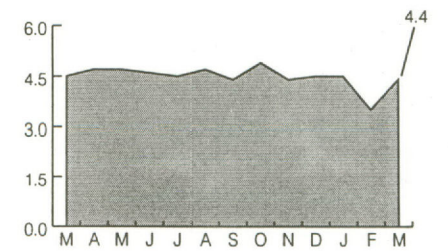
Port of Brownsville Total Cargo
Mar. 2003 vs. Mar. 2004: Up 11.3%
(In Thousands of Metric Tons)



Port of Corpus Christi (Cargo in U.S. Tons)

Cargo Type	Mar 04		03 vs. 04		YTD 03		YTD 04	
	%Share	%Chg	YTD 03	YTD 04	%Share	%Chg		
Break Bulk	1,964	0.0	231.3	13,573	23,067	0.2	70.0	
Chemical	16,911	0.4	22.3	28,651	32,870	0.3	14.7	
Containers	0	0.0	0.0	0	0	0.0	0.0	
Dry Bulk	250,419	5.7	-35.7	1,006,445	1,028,127	8.3	2.2	
Grain Bulk	0	0.0	-100.0	14,312	0	0.0	-100.0	
Liquid	32,784	0.7	116.1	44,276	98,137	0.8	121.6	
Petroleum	4,075,334	93.1	0.5	11,761,158	11,212,119	90.5	-4.7	
Total	4,377,411	100.0	-2.3	12,868,415	12,394,321	100.0	-3.7	

Port of Corpus Christi Cargo
Mar. 2003 vs. Mar. 2004
(Inbound – In Millions of U.S. Tons): Down 2.3%

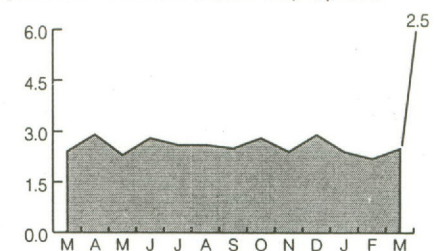


Cargo Type	Mar 04		03 vs. 04		YTD 03		YTD 04	
	%Share	%Chg	YTD 03	YTD 04	%Share	%Chg		
Break Bulk	14,060	0.6	-77.1	160,133	52,308	0.7	-67.3	
Chemical	204,377	8.0	21.4	455,383	500,600	7.0	9.9	
Containers	0	0.0	0.0	0	0	0.0	0.0	
Dry Bulk	262,372	10.3	152.9	607,608	731,173	10.2	20.3	
Grain Bulk	220,086	8.7	176.2	193,877	541,527	7.6	179.3	
Liquid	17,034	0.7	N/A	0	46,022	0.6	N/A	
Petroleum	1,826,286	71.8	-10.0	5,790,445	5,296,653	73.9	-8.5	
Total	2,544,215	100.0	4.1	7,207,444	7,168,283	100.0	-0.5	

Source: Port of Corpus Christi

Note: Totals may not add up due to rounding.

(Outbound – In Millions of U.S. Tons): Up 4.1%



Continued from Front Page

Table 4. U.S. Exports to Mexico via U.S.-Mexico Border by Port

Port	Q1 2003	Q1 2004	Absolute	%
			\$ Change 03 vs. 04	Change 03 vs. 04
Brownsville	1,333,605,627	1,370,262,250	36,656,623	2.7
Del Rio	332,806,099	319,703,664	-13,102,435	-3.9
Eagle Pass	669,682,888	820,154,654	150,471,766	22.5
Laredo	7,080,235,351	9,053,674,310	1,973,438,959	27.9
Hidalgo	1,507,569,757	1,536,282,133	28,712,376	1.9
Rio Grande	15,589,967	19,791,369	4,201,402	26.9
Progreso	27,901,117	28,891,810	990,693	3.6
Roma	28,054,713	15,587,538	-12,467,175	-44.4
Edinburg Airport	7,919	0	-7,919	-100.0
El Paso	4,047,833,078	4,563,331,526	515,498,448	12.7
Presidio	11,962,609	40,112,142	28,149,533	235.3
Fabens	139,080	1,558,674	1,419,594	1,020.7
Columbus	1,758,072	2,288,908	530,836	30.2
Santa Teresa	62,986,655	110,414,070	47,427,415	75.3
Santa Teresa Airport	0	5,150	5,150	-
Andrade	349,153	493,509	144,356	41.3
Callexico	2,078,443	858,957	-1,219,486	-58.7
San Ysidro	13,885,691	13,047,799	-837,892	-6.0
Tecate	106,665,719	94,844,316	-11,821,403	-11.1
Otay Mesa Station	1,952,166,999	2,070,574,143	118,407,144	6.1
Callexico-East	875,383,709	837,621,766	-37,761,943	-4.3
Douglas	50,214,653	61,963,595	11,748,942	23.4
Lukeville	652,566	3,953,375	3,300,809	505.8
Naco	6,664,087	11,605,189	4,941,102	74.1
Nogales	834,266,204	997,554,468	163,288,264	19.6
Sasabe	0	7,350	7,350	-
San Luis	77,123,012	59,113,680	-18,009,332	-23.4
Total	19,039,583,168	22,033,696,345	2,994,113,177	15.7

Table 5. U.S. Imports from Mexico via U.S.-Mexico Border by Port

Port	Q1 2003	Q1 2004	Absolute	%
			\$ Change 03 vs. 04	Change 03 vs. 04
Brownsville	1,248,404,681	1,290,369,655	41,964,974	3.4
Del Rio	376,456,500	386,610,037	10,153,537	2.7
Eagle Pass	630,421,930	802,029,870	171,607,940	27.2
Laredo	11,023,563,867	11,933,283,917	909,720,050	8.3
Hidalgo	1,864,210,628	2,197,349,805	333,139,177	17.9
Rio Grande	28,807,994	30,569,717	1,761,723	6.1
Progreso	1,210,842	2,224,145	1,013,303	83.7
Roma	2,848,186	3,036,090	187,904	6.6
Edinburg Airport	0	0	0	-
El Paso	5,548,563,853	5,982,910,160	434,346,307	7.8
Presidio	39,648,362	44,354,656	4,706,294	11.9
Fabens	0	0	0	-
Columbus	8,486,141	7,785,520	-700,621	-8.3
Santa Teresa	191,847,726	171,992,036	-19,855,690	-10.3
Santa Teresa Airport	0	0	0	-
Andrade	0	0	0	-
Callexico	0	0	0	-
San Ysidro	0	13,720	13,720	-
Tecate	115,849,703	123,352,599	7,502,896	6.5
Otay Mesa Station	2,553,037,534	2,955,877,713	402,840,179	15.8
Callexico-East	1,215,125,146	1,279,763,581	64,638,435	5.3
Douglas	69,094,848	113,948,122	44,853,274	64.9
Lukeville	20,266	0	-20,266	-100.0
Naco	3,005,404	7,245,418	4,240,014	141.1
Nogales	1,884,241,339	2,125,318,347	241,077,008	12.8
Sasabe	0	0	0	-
San Luis	171,671,266	179,262,323	7,591,057	4.4
Total	26,976,516,216	29,637,297,431	2,660,781,215	9.9

Source: U.S. Department of Commerce data compiled by the Texas Center at Texas A&M International University, Laredo, Texas.

Subscribe now to *Border Business Indicators!* Annual subscription rate is \$36.00 (12 monthly issues). Enclose this subscription form or photocopy with payment. Payable in U.S. funds only.

Type of Subscription:
 New
 Renewal

Check Method of Payment:
 Check
 Money Order

Payable to:
 Texas A&M International University

Send subscription to:
 Texas A&M International University
 Border Business Indicators
 Texas Center
 5201 University Boulevard
 Laredo, TX 78041-1900

Name _____
 Title _____
 Affiliation/Co. _____
 Address _____
 City _____
 State _____ Zip _____ Country _____
 Telephone () _____
 E-mail Address _____



Texas A&M International University
 Texas Center for Border Economic and Enterprise Development
 5201 University Boulevard
 Laredo, TX 78041-1900

Non-Profit Org.
 U.S. Postage Paid
 Laredo, Texas
 78041
 Permit 231