

2
L300.6
F684

95/ Lee
2-3 College
Senior Citizen
Program

Lee College Focus

Government Publications
Texas State Documents

OCT 16 1995 *pl*

Feb - Mar 1995

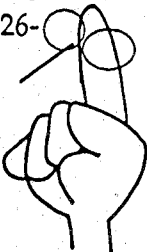
Depository
Dallas Public Library

Travel Show Presentation

Feb 10 - 9:30 am - Tucker Hall, Lee College
Join us as we see videos, slides and get all the information you want for:

- Natchez, Mississippi trip - April 3 - 5, 1995
- Hawaiian Cruise - August 12-19, 1995
- "Christmastime in Branson" - Nov 26- Dec 2, 1995

Sign up time is now!!



Shopping Trip to Conroe

February 27 - 9:00 am - McNulty-Haddick
Over 100 stores are now open in the Conroe Outlet Center. We will leave the Lee College McNulty-Haddick parking lot at 9 am and return when everyone has agreed that they have "shopped till they dropped" !!

Call 425-6416 to put your name on the list and then either mail, charge over phone with MasterCard or Visa, or bring \$2.00 payment for bus.

2nd Annual Extravaganza '95

College Fair Of Cosmetic Arts & Sciences
March 6 - 9 am - 2 pm - Lee College
Artists from Matrix, Sunglitz, Gerda Spillman, Elasta Q.P., European Touch, O.P.I., and many others will be giving educational classes. There will be special "Show Deals", free makeovers, door prizes, and samples in addition to door prizes. The Hair, Nail, and Skin Care Extravaganza will be held in the Gym from 9 am-2 pm. Fantastic door prizes will be given away throughout the day.

Call 425-6311 to register for \$8.00.



Christmas in the Ozarks and a Branson, Missouri Holiday Extravaganza

November 26 - December 2, 1995
7 days, 6 nights, deluxe motorcoach, 14 meals, 7 music shows (to include Shoji Tabuchi, the New York Radio City Rockettes, Andy Williams, Bobby Vinton, Tony Orlando, Lawrence Welk Resort, The Osmonds, Branson Belle, and Dolly Parton's Dixie Stampede), two dinner shows, fine hotels, taxes and gratuities...\$925. Come for February 10th trip presentation or call Lynne at 425-6416.

Lynne Foley, Lee College Senior Citizen Program Coordinator
425-6416

Liberty Opry on the Square

March 25 - 4:30 pm - McNulty-Haddick
Join us for a lively Country-Western and Gospel Show. Over 100 performances have been staged since June 1993.
Call 425-6416 NOW to put your name on the list. You will be called after February 22 to confirm that you are "on the list" or "on the waiting list." Payment of the \$ 7.00 fee for the show and bus is then due. You may telephone to charge by MasterCard or Visa, come in person to Rundell Hall. or mail payment to Lee College CE, Attn: Lynne Foley, P O Box 818, Baytown, Tx 77522-0818.
We'll leave the McNulty-Haddick parking lot at 4:30pm to do to a Dutch Treat dinner and then arrive for the 7 pm seating and 7:30 pm show. We should return around 11:30 pm.

Springtime In Natchez, Miss.

April 3 - 5, 1995
We invite the lovers of history and the romantic traditions of the Old South to step back into the past for an enchanted look at one of the South's most elegant towns.
Three days, two nites, 6 full meals, hotel, bus, tours, taxes and gratuities for \$345. Come February 10th for our presentation or call Lynne at 425-6416 for information and to sign up.



Hawaiian Cruise

August 12 - 19, 1995
We'll fly direct from Houston to Honolulu, board the S.S. Constitution and sail the next 7 days to Kona and Hilo, Hawaii, and Kahului and Nawiliwili, Maui, and then back to Honolulu for 2 days. Come to the February 10th trip presentation or call Lynne at 425-6416 for more information and to sign up.

1900

1901

1902

1903

1904

1905

1906

1907

1908

1909