

2
L250.8

28:11

Border Business Indicators

Government Publications
Texas State Documents

MAY 13 2005

Depository
Dallas Public Library

Texas Center for Border Economic and Enterprise Development

Vol. 28 No. 11 • November 2004

U.S.-Mexico Trade: September 2004 Trade Figures Continued Up

September 2004 year-to-date figures exhibited continued growth in trade between the U.S. and Mexico. The total trade dollar value of the merchandise flowing between the trading partners registered a worth of \$196.3 billion. This figure was 13.5 percent above last year's figure of \$172.9 billion for the January-September period. U.S. exports to Mexico have outpaced last year's figures by 14.0 percent (\$81.5 billion), and U.S. imports have maintained and increase of 12.7 percent (\$114.8

billion) for this period.

The tables below focuses specifically on the top five border ports of entry on the U.S.-Mexico border and the merchandise processed. The dollar values are of total trade (U.S. exports to Mexico plus U.S. imports from Mexico) for the 2003 and 2004 year-to-date periods. Also included in these tables are the Standard International Trade Classification (SITC) codes and their descriptions. —*B. Garcia*

Table 1
U.S.-Mexico Total Trade Dollar Value via Top 5 U.S.-Mexico Border Ports
Merchandise Composition by 1-Digit SITC Code
September 2003 Year-to-Date vs. September 2004 Year-to-Date

Laredo, Texas		Total Trade \$ Value YTD		% Change YTD	% Share YTD	
SITC	Description	Sep 2003	Sep 2004	2003 vs. 2004	Sep 2003	Sep 2004
0	Food and Live Animals	2,132,139,170	2,613,563,796	22.6	3.7	3.9
1	Beverages and Tobacco	660,957,320	693,146,948	4.9	1.1	1.0
2	Crude Materials, Inedible, Except Fuels	1,148,990,878	1,301,636,254	13.3	2.0	2.0
3	Mineral Fuels, Lubricants and Related Materials	133,052,356	147,831,580	11.1	0.2	0.2
4	Animal and Vegetable Oils, Fats and Waxes	107,598,447	121,596,614	13.0	0.2	0.2
5	Chemicals and Related Products, N.E.S.	3,962,804,697	4,804,516,530	21.2	6.8	7.2
6	Manufactured Goods Classified Chiefly by Material	7,041,989,130	8,974,199,414	27.4	12.1	13.5
7	Machinery and Transport Equipment	35,176,341,545	39,039,445,931	11.0	60.3	58.9
8	Miscellaneous Manufactured Articles	6,897,870,118	7,408,202,308	7.4	11.8	11.2
9	Commodities and Transactions not Classified Elsewhere in the SITC	1,088,563,037	1,186,201,665	9.0	1.9	1.8
Total		58,350,306,698	66,290,341,040	13.6	100.0	100.0

El Paso, Texas		Total Trade \$ Value YTD		% Change YTD	% Share YTD	
SITC	Description	Sep 2003	Sep 2004	2003 vs. 2004	Sep 2003	Sep 2004
0	Food and Live Animals	349,871,988	475,358,912	35.9	1.2	1.5
1	Beverages and Tobacco	130,788,163	206,605,619	58.0	0.5	0.6
2	Crude Materials, Inedible, Except Fuels	171,150,177	245,108,955	43.2	0.6	0.8
3	Mineral Fuels, Lubricants and Related Materials	113,953,670	72,669,231	-36.2	0.4	0.2
4	Animal and Vegetable Oils, Fats and Waxes	19,376,602	0	-100.0	0.1	0.0
5	Chemicals and Related Products, N.E.S.	474,128,507	591,164,004	24.7	1.6	1.8
6	Manufactured Goods Classified Chiefly by Material	2,233,554,468	2,622,157,239	17.4	7.7	8.2
7	Machinery and Transport Equipment	19,432,174,688	21,772,221,700	12.0	67.4	68.1
8	Miscellaneous Manufactured Articles	5,188,269,153	5,211,064,014	0.4	18.0	16.3
9	Commodities and Transactions not Classified Elsewhere in the SITC	722,544,283	768,957,998	6.4	2.5	2.4
Total		28,835,811,699	31,965,307,672	10.9	100.0	100.0

Otay Mesa Station, California		Total Trade \$ Value YTD		% Change YTD	% Share YTD	
SITC	Description	Sep 2003	Sep 2004	2003 vs. 2004	Sep 2003	Sep 2004
0	Food and Live Animals	962,015,875	981,497,457	2.0	6.7	6.0
1	Beverages and Tobacco	25,562,707	31,538,188	23.4	0.2	0.2
2	Crude Materials, Inedible, Except Fuels	189,119,859	212,818,784	12.5	1.3	1.3
3	Mineral Fuels, Lubricants and Related Materials	41,594,076	0	-100.0	0.3	0.0
4	Animal and Vegetable Oils, Fats and Waxes	4,426,193	6,075,806	37.3	0.0	0.0
5	Chemicals and Related Products, N.E.S.	602,545,936	674,787,715	12.0	4.2	4.1
6	Manufactured Goods Classified Chiefly by Material	1,648,519,330	1,876,669,513	13.8	11.5	11.5
7	Machinery and Transport Equipment	7,040,736,798	8,586,318,844	22.0	49.0	52.5
8	Miscellaneous Manufactured Articles	3,485,934,594	3,582,031,557	2.8	24.3	21.9
9	Commodities and Transactions not Classified Elsewhere in the SITC	367,152,256	410,416,022	11.8	2.6	2.5
Total		14,367,607,624	16,362,153,886	13.9	100.0	100.0

Continued on Back Page

Need More Detailed Information?

For more detailed information regarding border crossings, economic indicators and trade activity, visit the Center's web site:

<http://texascenter.tamui.edu>

Technical Reports

The Texas Center's research activities have resulted in a series of technical reports on border economic issues ranging from infrastructure needs and environmental issues to the impact of NAFTA on Texas-Mexico trade relations and future business opportunities.

The Center continues its research tradition with activities spanning those areas involving border trade, business development and economic issues.

New research encompassing areas such as community development, health, culture, education and socioeconomic issues have been added to the series.

Technical Reports are freely available on-line for download in PDF format, unless otherwise noted.

The *Border Business Indicators* (ISSN 1091-9104) is published by the Texas Center for Border Economic and Enterprise Development, at Texas A&M International University in Laredo, Texas.

Dr. Ray M. Keck, III
President, Texas A&M International University

Dr. J. Michael Patrick
Director, Texas Center

Baldomero G. Garcia
Program Manager, Texas Center

Jacqueline O. Benavides
Data & Information Specialist, Texas Center

Leo Lozano
Database Specialist, Texas Center

Eleni Athanathou
Student Research Assistant, Texas Center

Further information may be obtained by calling:

TEL. (956) 326-2546
FAX (956) 326-2544

or by writing to the addresses below:

E-mail: texascenter@tamui.edu
Texas A&M International University
Texas Center
5201 University Boulevard
Laredo, TX 78041-1900

Produced by the TAMIU Print Shop
on Recycled Paper



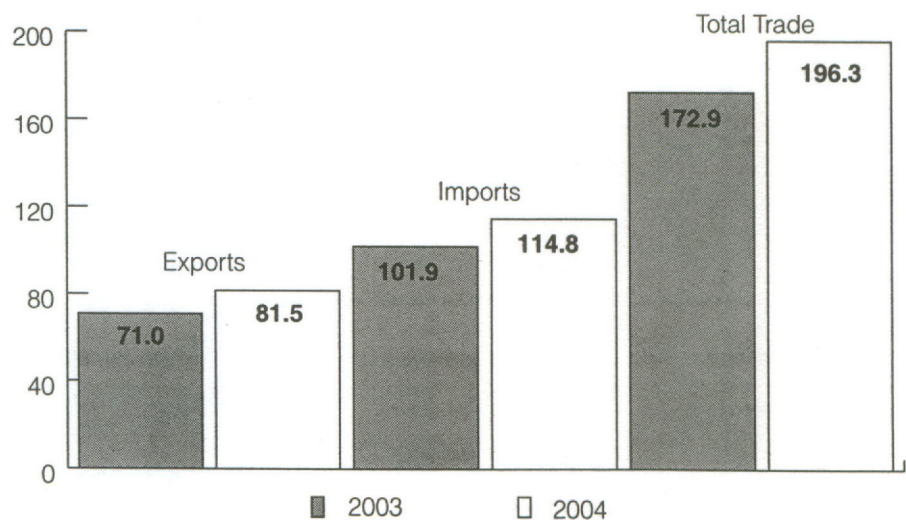
Note from the Director

Indicators of border business activity for September 2004 year-to-date (YTD) demonstrated fifteen indicators increased and seven decreased. 2004 YTD comparisons to 2003 reported for the border are listed below:

- Pedestrian bridge crossings into Mexico were up 3.3 percent.
- Pedestrian bridge crossings into Texas were down 0.3 percent.
- Vehicle bridge crossings into Mexico fell 1.4 percent.
- Vehicle bridge crossings into Texas fell 0.4 percent.
- Truck bridge crossings into Mexico gained 7.3 percent.
- Truck bridge crossings into Texas gained 6.4 percent.
- Rail car bridge crossings into Mexico went up 0.4 percent.
- Rail car bridge crossings into Texas went up 11.3 percent.
- Revenues collected by U.S. Customs increased 8.7 percent.
- Revenues collected by U.S. bridge operators registered a gain 8.6 percent.
- Tourist visas issued for entry into Mexico were up 11.4 percent.
- Total employment was up 2.0 percent, with 9,969 jobs gained. The average unemployment rate for the border in September 2004 was 7.3 percent.
- Total building permits issued fell 16.5 percent.
- Total building permit values increased 10.1 percent.
- Power connections in service for residential were up 2.8 percent, commercial were up 3.0 percent and industrial were down 4.8 percent.
- Air passenger arrivals were up 15.2 percent, and departures were up 15.0 percent.
- Total cargo for the Port of Brownsville decreased 7.3 percent.
- Inbound cargo for the Port of Corpus Christi went up 0.3 percent, and outbound cargo went down 0.3 percent.

U.S.-Mexico Trade at a Glance

September 2004 Year-to-Date
(In Billions of U.S.\$)



Source: U.S. Census Bureau, Foreign Trade Division, Data Dissemination Branch

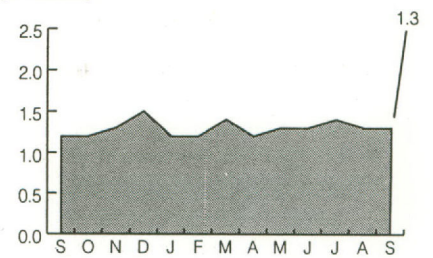
Disclaimer: Please note that the data contained in this and all issues of the *Border Business Indicators* is collected from different government agencies and private sources. Readers should note that different data-collecting agencies use dissimilar, often conflicting, techniques in collecting and compiling the information they publish. Because of this lack of uniformity, comparing different data could result in erroneous conclusions. While we are most grateful to our sources for their cooperation, we cannot assume responsibility for the comparability of the data.

Pedestrian Bridge Crossings from Texas to Mexico

City	Sep 04	%Share	03 vs. 04		YTD 03	YTD 04	%Share	YTD %Chg
			%Chg					
Brownsville	178,138	14.2	0.0		1,827,731	1,787,166	15.3	-2.2
Del Rio	4,290	0.3	-17.4		44,743	54,291	0.5	21.3
Eagle Pass	47,304	3.8	2.1		432,120	441,281	3.8	2.1
El Paso	540,247	43.1	24.8		4,042,634	4,243,119	36.4	5.0
Harlingen	68	0.0	23.6		568	819	0.0	44.2
Laredo	309,987	24.7	-3.6		2,932,278	3,028,050	26.0	3.3
McAllen-Hidalgo	98,204	7.8	-0.6		971,423	996,871	8.6	2.6
Progreso	64,689	5.2	16.0		922,216	999,006	8.6	8.3
Rio Grande	100	0.0	-32.4		2,105	2,122	0.0	0.8
Roma	10,661	0.9	-6.2		109,963	106,428	0.9	-3.2
Total	1,253,688	100.0	9.0		11,285,781	11,659,153	100.0	3.3

Source: U.S. bridge operators in cited cities

Pedestrians into Mexico All Cited Cities
Sep. 2003 vs. Sep. 2004: Up 9.0%
(In Millions)

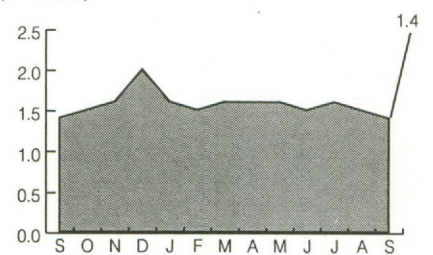


Pedestrian Bridge Crossings from Mexico to Texas

City	Sep 04	%Share	03 vs. 04		YTD 03	YTD 04	%Share	YTD %Chg
			%Chg					
Brownsville	200,505	14.4	0.0		2,049,997	2,014,375	14.5	-1.7
Del Rio	7,545	0.5	17.4		69,636	83,953	0.6	20.6
Eagle Pass	53,313	3.8	-4.0		541,444	529,460	3.8	-2.2
El Paso	591,020	42.3	-5.6		5,666,175	5,533,129	39.9	-2.3
Laredo	342,893	24.5	4.3		3,239,744	3,389,760	24.5	4.6
McAllen-Hidalgo	119,954	8.6	-3.0		1,231,856	1,227,159	8.9	-0.4
Presidio	1,961	0.1	8.2		18,763	19,386	0.1	3.3
Progreso	65,028	4.7	15.8		924,528	909,106	6.6	-1.7
Rio Grande	790	0.1	-24.8		11,169	9,490	0.1	-15.0
Roma	13,728	1.0	-5.1		138,674	139,744	1.0	0.8
Total	1,396,737	100.0	-1.3		13,891,986	13,855,562	100.0	-0.3

Source: Oficina de Caminos y Puentes Federales, Mexico

Pedestrians into Texas All Cited Cities
Sep. 2003 vs. Sep. 2004: Down 1.3%
(In Millions)

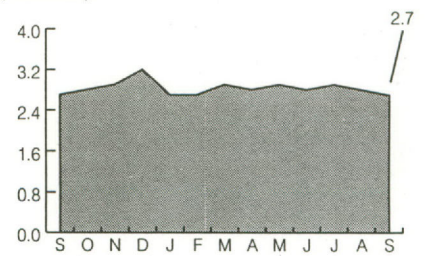


Vehicle Bridge Crossings from Texas to Mexico

City	Sep 04	%Share	03 vs. 04		YTD 03	YTD 04	%Share	YTD %Chg
			%Chg					
Brownsville	529,957	19.9	2.9		5,156,924	5,006,426	19.9	-2.9
Del Rio	149,892	5.6	1.1		1,415,906	1,398,139	5.6	-1.3
Eagle Pass	249,544	9.4	-6.2		2,409,014	2,374,941	9.4	-1.4
El Paso	357,957	13.4	-4.7		3,323,035	3,286,414	13.1	-1.1
Harlingen	53,186	2.0	4.6		504,357	518,094	2.1	2.7
Laredo	545,419	20.5	-3.2		5,159,059	5,159,179	20.5	0.0
McAllen-Hidalgo	432,747	16.3	2.8		4,139,253	4,083,724	16.2	-1.3
Pharr	138,905	5.2	3.3		1,295,874	1,316,324	5.2	1.6
Progreso	76,891	2.9	-12.4		846,461	797,732	3.2	-5.8
Rio Grande	47,003	1.8	1.2		455,904	448,348	1.8	-1.7
Roma	81,315	3.1	-12.2		836,313	791,279	3.1	-5.4
Total	2,662,816	100.0	-1.4		25,542,100	25,180,600	100.0	-1.4

Source: U.S. bridge operators in cited cities

Vehicles into Mexico All Cited Cities
Sep. 2003 vs. Sep. 2004: Down 1.4%
(In Millions)

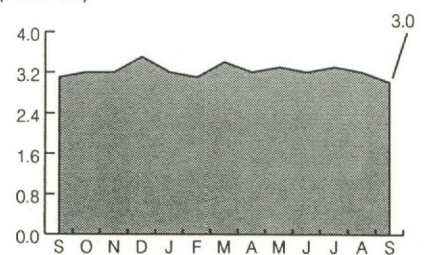


Vehicle Bridge Crossings from Mexico to Texas

City	Sep 04	%Share	03 vs. 04		YTD 03	YTD 04	%Share	YTD %Chg
			%Chg					
Brownsville	528,709	17.5	1.5		5,155,041	5,026,706	17.4	-2.5
Del Rio	149,070	4.9	-1.3		1,424,043	1,397,493	4.8	-1.9
Eagle Pass	259,136	8.6	1.9		2,512,677	2,481,855	8.6	-1.2
El Paso	603,581	20.0	-13.5		5,634,992	5,756,717	19.9	2.2
Harlingen	59,860	2.0	0.6		588,014	593,854	2.1	1.0
Laredo	554,912	18.4	-2.0		5,307,057	5,222,347	18.1	-1.6
McAllen-Hidalgo	413,689	13.7	8.2		3,753,375	3,854,033	13.3	2.7
Pharr	182,195	6.0	-9.5		1,921,453	1,830,297	6.3	-4.7
Presidio	58,061	1.9	4.1		523,345	554,522	1.9	6.0
Progreso	79,132	2.6	-3.7		844,851	882,788	3.1	4.5
Rio Grande	52,603	1.7	-0.3		518,386	513,755	1.8	-0.9
Roma	82,371	2.7	-1.0		842,698	805,786	2.8	-4.4
Total	3,023,319	100.0	-2.7		29,025,932	28,920,153	100.0	-0.4

Source: Oficina de Caminos y Puentes Federales, Mexico

Vehicles into Texas All Cited Cities
Sep. 2003 vs. Sep. 2004: Down 2.7%
(In Millions)

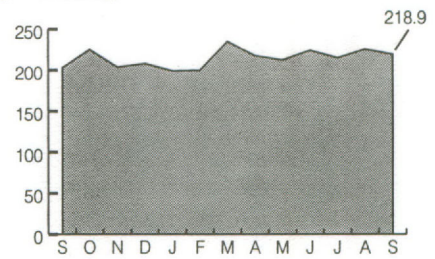


Truck Bridge Crossings from Texas to Mexico

City	Sep 04	%Share	03 vs. 04		YTD 03	YTD 04	%Share	YTD %Chg
			%Chg					
Brownsville	17,373	7.9	9.6		148,964	150,765	7.7	1.2
Del Rio	5,521	2.5	-7.9		55,551	48,886	2.5	-12.0
Eagle Pass	8,324	3.8	16.2		63,760	74,835	3.8	17.4
El Paso	25,240	11.5	1.1		207,005	218,538	11.2	5.6
Harlingen	3,563	1.6	9.9		29,202	28,210	1.4	-3.4
Laredo	121,235	55.4	7.4		1,019,568	1,083,203	55.6	6.2
McAllen-Hidalgo	1,826	0.8	-8.0		18,834	16,489	0.8	-12.5
Pharr	29,825	13.6	17.0		230,117	280,377	14.4	21.8
Progreso	2,677	1.2	8.8		16,491	17,414	0.9	5.6
Rio Grande	2,544	1.2	39.2		17,638	20,593	1.1	16.8
Roma	774	0.4	-6.6		7,334	8,085	0.4	10.2
Total	218,902	100.0	8.0		1,814,464	1,947,395	100.0	7.3

Source: U.S. bridge operators in cited cities
 Note: Figures include loaded and empty trucks. El Paso figures do not include Bridge of the Americas.

Trucks into Mexico All Cited Cities
 Sep. 2003 vs. Sep. 2004: Up 8.0%
 (In Thousands)

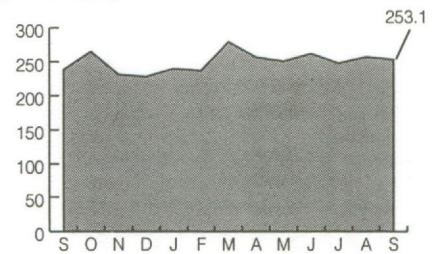


Truck Bridge Crossings from Mexico to Texas

City	Sep 04	%Share	03 vs. 04		YTD 03	YTD 04	%Share	YTD %Chg
			%Chg					
Brownsville	16,089	6.4	2.2		142,321	140,139	6.1	-1.5
Del Rio	5,901	2.3	26.7		50,085	49,317	2.2	-1.5
Eagle Pass	8,669	3.4	20.5		65,157	75,733	3.3	16.2
El Paso	61,414	24.3	5.6		488,240	545,262	23.9	11.7
Harlingen	3,726	1.5	8.7		31,657	30,124	1.3	-4.8
Laredo	114,080	45.1	3.0		1,016,373	1,039,166	45.5	2.2
Pharr	36,234	14.3	12.4		302,733	344,863	15.1	13.9
Presidio	543	0.2	37.8		3,705	5,235	0.2	41.3
Progreso	2,625	1.0	20.5		14,546	16,599	0.7	14.1
Rio Grande	3,149	1.2	8.2		26,314	30,648	1.3	16.5
Roma	655	0.3	-1.9		5,710	6,368	0.3	11.5
Falcon Heights	15	0.0	66.7		182	81	0.0	-55.5
Total	253,100	100.0	6.2		2,147,023	2,283,535	100.0	6.4

Source: South Texas Customs Management Center, Laredo & U.S. Customs Office of Public Affairs, El Paso
 Note: Figures include loaded and empty trucks.

Trucks into Texas All Cited Cities
 Sep. 2003 vs. Sep. 2004: Up 6.2%
 (In Thousands)

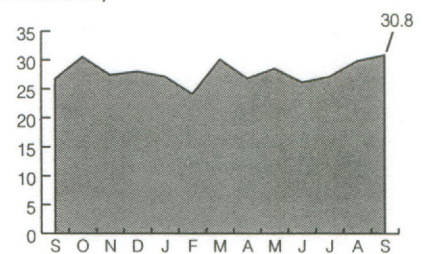


Rail Car Crossings from Texas to Mexico

City	Sep 04	%Share	03 vs. 04		YTD 03	YTD 04	%Share	YTD %Chg
			%Chg					
Brownsville	3,841	12.5	36.8		29,411	26,417	10.5	-10.2
Eagle Pass	6,253	20.3	8.0		55,254	50,341	20.1	-8.9
El Paso	N/A	N/A	N/A		N/A	N/A	N/A	N/A
Laredo	20,744	67.3	14.9		164,859	173,679	69.4	5.4
Total	30,838	100.0	15.7		249,524	250,437	100.0	0.4

Source: Railroad companies in cited cities
 Note: Figures for El Paso are not available.

Rail Cars into Mexico All Cited Cities
 Sep. 2003 vs. Sep. 2004: Up 15.7%
 (In Thousands)

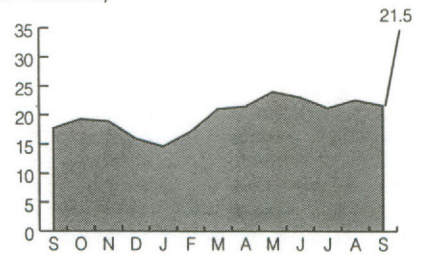


Rail Car Crossings from Mexico to Texas

City	Sep 04	%Share	03 vs. 04		YTD 03	YTD 04	%Share	YTD %Chg
			%Chg					
Brownsville	374	1.7	-47.2		8,537	3,993	2.1	-53.2
Eagle Pass	1,780	8.3	29.0		11,296	14,062	7.6	24.5
El Paso	4,878	22.7	161.7		15,308	40,016	21.5	161.4
Laredo	14,446	67.3	5.1		132,202	128,165	68.8	-3.1
Total	21,478	100.0	21.4		167,343	186,236	100.0	11.3

Source: Railroad companies in cited cities & U.S. Customs Office of Public Affairs, El Paso

Rail Cars into Texas All Cited Cities
 Sep. 2003 vs. Sep. 2004: Up 21.4%
 (In Thousands)

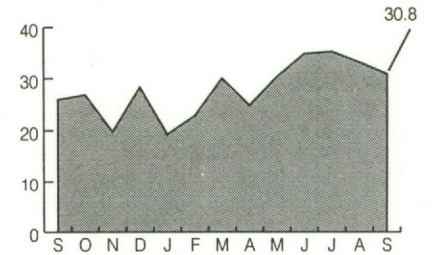


Revenues Collected by U.S. Customs District of Laredo (in U.S.\$)

City	Sep 04	%Share	03 vs. 04		YTD 03	YTD 04	%Share	YTD %Chg
			%Chg					
Brownsville	2,562,944	8.3	42.2		11,255,293	20,331,780	7.8	80.6
Del Rio	109,304	0.4	31.1		2,578,167	892,423	0.3	-65.4
Eagle Pass	1,155,947	3.8	21.6		34,491,573	7,597,895	2.9	-78.0
McAllen-Hidalgo	4,167,861	13.5	16.3		31,171,546	34,938,199	13.4	12.1
Laredo	22,679,743	73.7	16.9		159,982,788	196,310,022	75.2	22.7
Progreso	27,914	0.1	31.7		139,812	250,660	0.1	79.3
Rio Grande	35,628	0.1	42.0		360,890	244,577	0.1	-32.2
Roma	32,373	0.1	111.2		111,498	329,431	0.1	195.5
Total	30,771,713	100.0	18.9		240,091,567	260,894,986	100.0	8.7

Source: South Texas Customs Management Center, Laredo
 Note: Totals may not add up due to rounding.

Customs Revenues for the District of Laredo
 Sep. 2003 vs. Sep. 2004: Up 18.9%
 (In Millions of U.S.\$)

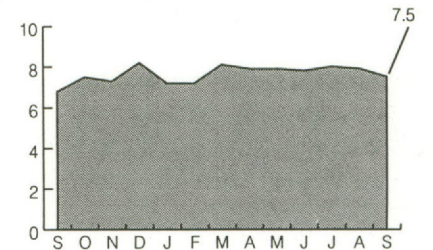


Revenues Collected by U.S. Bridge Operators (in U.S.\$)

City	Sep 04	%Share	03 vs. 04		YTD 03	YTD 04	%Share	YTD %Chg
			%Chg					
Brownsville	1,125,651	15.0	11.1		9,487,767	10,517,197	15.2	10.9
Del Rio	362,154	4.8	21.2		2,862,852	3,046,649	4.4	6.4
Eagle Pass	510,269	6.8	-2.2		5,191,555	5,159,276	7.4	-0.6
El Paso	1,098,762	14.6	30.1		7,554,329	9,958,756	14.3	31.8
Harlingen	159,852	2.1	12.8		1,352,662	1,467,390	2.1	8.5
Laredo	2,699,610	35.9	5.2		23,609,895	24,619,408	35.5	4.3
McAllen-Hidalgo	799,813	10.6	2.3		7,673,870	7,548,324	10.9	-1.6
Pharr	590,277	7.8	24.9		4,387,908	5,348,654	7.7	21.9
Roma	177,767	2.4	0.5		1,798,255	1,735,670	2.5	-3.5
Total	7,524,154	100.0	10.4		63,919,093	69,401,325	100.0	8.6

Source: U.S. bridge operators in cited cities
 Note: El Paso figures do not include Bridge of the Americas (Toll-free). Totals may not add up due to rounding.

Bridge Revenues All Cited Cities
 Sep. 2003 vs. Sep. 2004: Up 10.4%
 (In Millions of U.S.\$)

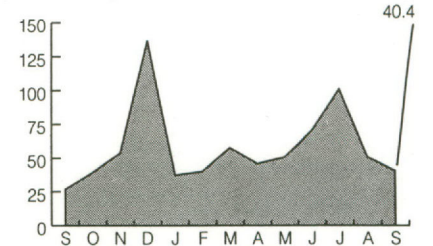


Tourist Visas Issued for Entry into Mexico

City	Sep 04	%Share	03 vs. 04		YTD 03	YTD 04	%Share	YTD %Chg
			%Chg					
Del Rio	440	1.1	6.3		6,701	7,282	1.5	8.7
El Paso	7,710	19.1	55.5		68,381	89,475	18.1	30.8
McAllen-Hidalgo	8,579	21.2	315.9		96,772	108,001	21.9	11.6
Brownsville	4,819	11.9	15.6		56,773	58,613	11.9	3.2
Laredo	16,464	40.8	22.9		191,995	205,543	41.6	7.1
Eagle Pass	2,385	5.9	29.0		22,568	24,630	5.0	9.1
Total	40,397	100.0	50.5		443,190	493,544	100.0	11.4

Source: Instituto Nacional de Migracion, Mexico

Tourist Visas Issued All Cited Cities
 Sep. 2003 vs. Sep. 2004: Up 50.5%
 (In Thousands)

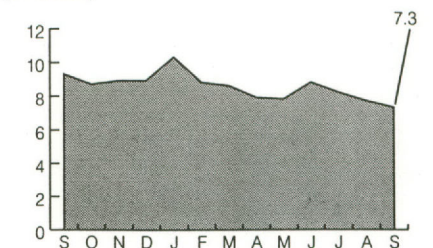


Employment & Unemployment Rates (Texas Border)

City	Employed		%Unemp	Emp Avg		03 vs. 04		Gain/Loss
	Sep 04	Sep 04		Sep 04	YTD 03	YTD 04	Emp %Chg	
Brownsville	48,262	5,361	10.0	48,388	48,038	-0.7	-350	
Del Rio	15,582	1,057	6.4	15,897	15,408	-3.1	-489	
Eagle Pass	9,772	1,132	10.4	8,275	9,797	18.4	1,522	
El Paso	250,930	18,594	6.9	246,179	246,901	0.3	723	
Harlingen	27,726	1,823	6.2	27,798	27,584	-0.8	-215	
Laredo	77,184	4,655	5.7	71,674	76,206	6.3	4,532	
McAllen	53,162	4,341	7.5	50,631	53,649	6.0	3,018	
Pharr	15,853	2,316	12.7	15,098	15,998	6.0	900	
Rio Grande	5,705	607	9.6	5,556	5,613	1.0	56	
Total	504,176	39,886	7.3	489,496	499,192	2.0	9,696	
Texas Unemployment Rate						5.5		
U.S. Unemployment Rate						5.4		

Source: Texas Workforce Commission
 Note: Figures are preliminary and subject to revision. Totals may not add up due to rounding.

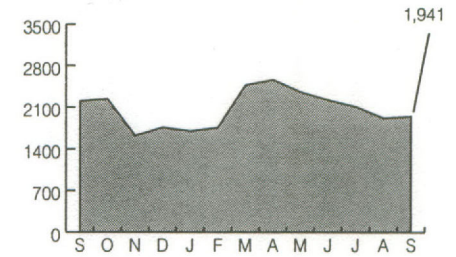
Percent of Unemployment All Cited Cities Combined
 Sep. 2003 vs. Sep. 2004: Down 21.5%
 (In Percent)



Building Permits

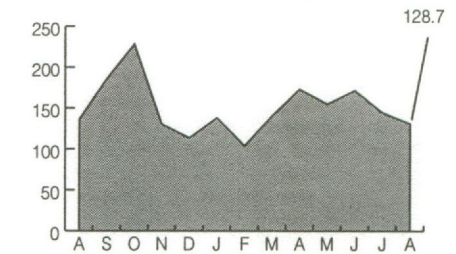
Number City	03 vs. 04		YTD 03	YTD 04	YTD		
	Sep 04	%Share			%Chg	%Share	%Chg
Brownsville	297	15.3	-32.3	5,938	3,073	16.1	-48.2
Del Rio	27	1.4	-40.0	698	837	4.4	19.9
Eagle Pass	46	2.4	-8.0	418	451	2.4	7.9
El Paso	804	41.4	-23.8	10,427	8,566	45.0	-17.8
Harlingen	271	14.0	251.9	703	921	4.8	31.0
Laredo	344	17.7	-2.5	3,002	3,042	16.0	1.3
McAllen	152	7.8	-17.4	1,624	2,145	11.3	32.1
Total	1,941	100.0	-11.9	22,810	19,035	100.0	-16.5

Building Permits All Cited Cities
Sep. 2003 vs. Sep. 2004
(Number of Permits): Down 11.9%



Dollar Value City	03 vs. 04		YTD 03	YTD 04	YTD		
	Sep 04	%Share			%Chg	%Share	%Chg
Brownsville	18,881,778	14.7	-21.6	219,694,038	202,336,195	15.8	-7.9
Del Rio	531,175	0.4	-29.7	15,538,119	19,750,277	1.5	27.1
Eagle Pass	1,080,260	0.8	-47.8	24,876,147	36,060,962	2.8	45.0
El Paso	23,459,955	18.2	-40.7	396,363,026	434,077,953	33.8	9.5
Harlingen	10,440,512	8.1	129.7	47,894,015	104,277,117	8.1	117.7
Laredo	60,169,043	46.8	78.5	203,295,277	309,859,856	24.1	52.4
McAllen	14,121,984	11.0	-82.5	259,213,019	178,083,176	13.9	-31.3
Total	128,684,707	100.0	-30.6	1,166,873,641	1,284,445,536	100.0	10.1

(Value of Permits In Millions of U.S.\$): Down 30.6%



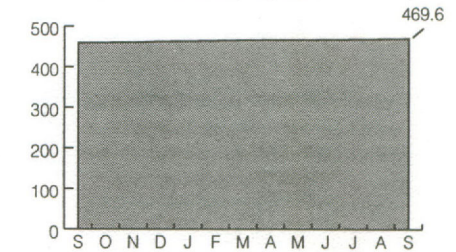
Source: Permit Departments in cited cities

Note: Dollar value totals may not add up due to rounding.

Power Connections (in Service)

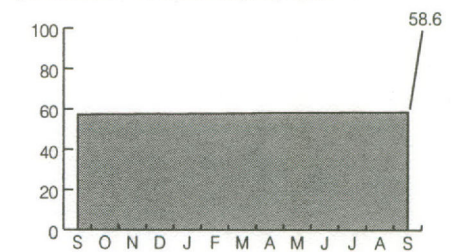
Residential City	03 vs. 04		Average YTD 03	Average YTD 04	YTD		
	Sep 04	%Share			%Chg	%Share	%Chg
Brownsville	34,552	7.4	3.3	33,292	34,102	7.3	2.4
Del Rio	14,589	3.1	0.5	14,382	14,597	3.1	1.5
Eagle Pass	10,485	2.2	1.3	10,206	10,459	2.2	2.5
El Paso	295,065	62.8	2.7	284,907	292,656	62.7	2.7
Harlingen	22,662	4.8	0.6	22,281	22,755	4.9	2.1
Laredo	56,415	12.0	1.7	54,327	56,224	12.0	3.5
McAllen	35,789	7.6	2.4	34,567	35,804	7.7	3.6
Total	469,557	100.0	2.4	453,961	466,597	100.0	2.8

Power Connections All Cited Cities
Sep. 2003 vs. Sep. 2004
(Residential - In Thousands): Up 2.4%



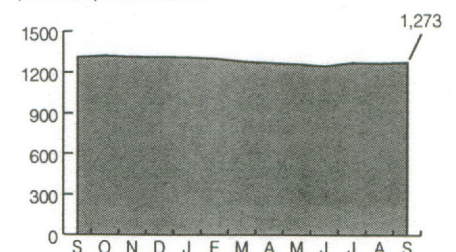
Commercial City	03 vs. 04		Average YTD 03	Average YTD 04	YTD		
	Sep 04	%Share			%Chg	%Share	%Chg
Brownsville	4,648	7.9	3.8	4,383	4,567	7.9	4.2
Del Rio	2,291	3.9	0.2	2,275	2,290	3.9	0.7
Eagle Pass	1,629	2.8	2.3	1,579	1,609	2.8	1.9
El Paso	30,922	52.8	3.0	29,636	30,638	52.7	3.4
Harlingen	3,926	6.7	0.5	3,876	3,917	6.7	1.1
Laredo	8,710	14.9	1.5	8,535	8,707	15.0	2.0
McAllen	6,465	11.0	3.3	6,185	6,409	11.0	3.6
Total	58,591	100.0	2.6	56,469	58,138	100.0	3.0

(Commercial - In Thousands): Up 2.6%



Industrial City	03 vs. 04		Average YTD 03	Average YTD 04	YTD		
	Sep 04	%Share			%Chg	%Share	%Chg
Brownsville	634	49.8	-4.1	685	629	49.4	-8.1
Del Rio	44	3.5	0.0	44	43	3.4	-2.0
Eagle Pass	30	2.4	3.4	30	29	2.3	-1.1
El Paso	134	10.5	-6.3	142	139	10.9	-2.0
Harlingen	101	7.9	-3.8	106	102	8.0	-4.2
Laredo	207	16.3	0.5	211	209	16.4	-0.9
McAllen	123	9.7	0.8	122	123	9.6	0.9
Total	1,273	100.0	-2.8	1,339	1,274	100.0	-4.8

(Industrial): Down 2.8%



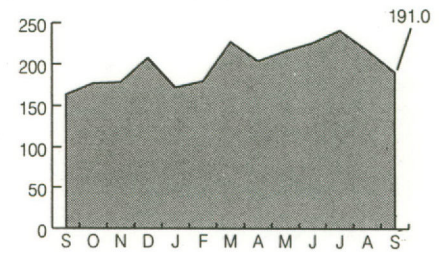
Source: American Electric Power Company, Brownsville Public Utilities Board & El Paso Electric Company

Note: Totals may not add up due to rounding.

Air Passenger Service Activity (Number of Passengers)

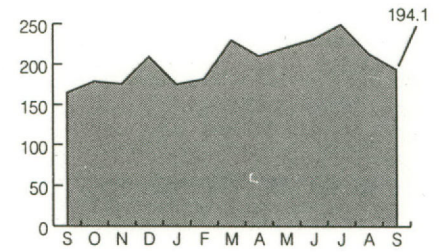
Arrivals		03 vs. 04		YTD			
City	Sep 04	%Share	%Chg	YTD 03	YTD 04	%Share	%Chg
Brownsville	5,164	2.7	16.2	46,386	49,253	2.6	6.2
El Paso	124,337	65.1	21.6	1,027,393	1,206,563	64.4	17.4
Harlingen	31,889	16.7	7.2	294,957	326,696	17.4	10.8
Laredo	6,511	3.4	8.1	52,841	58,658	3.1	11.0
McAllen	23,074	12.1	11.0	205,272	232,934	12.4	13.5
Total	190,975	100.0	17.0	1,626,849	1,874,104	100.0	15.2

Air Passenger Activity All Cited Cities
 Sep. 2003 vs. Sep. 2004
 (Arrivals – In Thousands): Up 17.0%



Departures		03 vs. 04		YTD			
City	Sep 04	%Share	%Chg	YTD 03	YTD 04	%Share	%Chg
Brownsville	5,160	2.7	11.0	46,696	50,734	2.7	8.6
El Paso	125,262	64.5	21.9	1,045,987	1,223,394	64.1	17.0
Harlingen	33,503	17.3	10.4	303,426	338,711	17.8	11.6
Laredo	6,750	3.5	11.8	53,714	58,278	3.1	8.5
McAllen	23,447	12.1	12.7	209,281	236,450	12.4	13.0
Total	194,122	100.0	18.0	1,659,104	1,907,567	100.0	15.0

(Departures – In Thousands): Up 18.0%

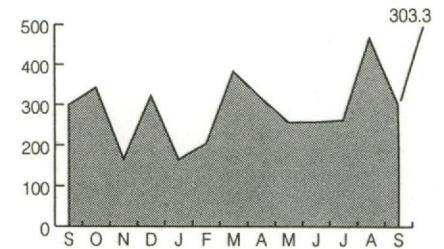


Source: Airports in cited cities

Port of Brownsville (Total Cargo in Metric Tons)

Cargo Type		03 vs. 04		YTD			
Cargo Type	Sep 04	%Share	%Chg	YTD 03	YTD 04	%Share	%Chg
Break Bulk	158,372	52.2	-22.5	1,774,352	1,324,159	50.7	-25.4
Containers	0	0.0	0.0	0	0	0.0	0.0
Grain Bulk	0	0.0	-100.0	61,801	39,569	1.5	-36.0
Liquid	308	0.1	-84.0	36,101	18,074	0.7	-49.9
Machinery	12,375	4.1	3828.6	3,797	175,000	6.7	4508.9
Petroleum	132,257	43.6	85.5	940,367	1,055,020	40.4	12.2
Total	303,312	100.0	1.4	2,816,418	2,611,822	100.0	-7.3

Port of Brownsville Total Cargo
 Sep. 2003 vs. Sep. 2004: Up 1.4%
 (In Thousands of Metric Tons)



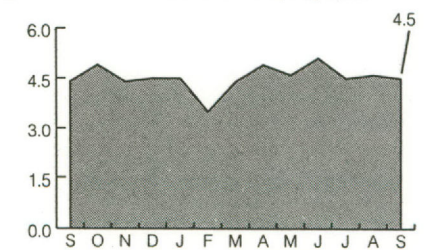
Source: Port of Brownsville

Note: Totals may not add up due to rounding.

Port of Corpus Christi (Cargo in U.S. Tons)

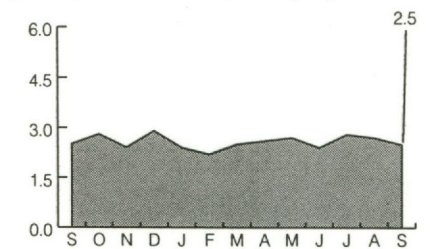
Inbound Cargo Type		03 vs. 04		YTD			
Cargo Type	Sep 04	%Share	%Chg	YTD 03	YTD 04	%Share	%Chg
Break Bulk	63,841	1.4	2036.7	50,800	246,585	0.6	385.4
Chemical	15,102	0.3	73.6	90,422	87,796	0.2	-2.9
Containers	0	0.0	0.0	0	0	0.0	0.0
Dry Bulk	156,991	3.5	-66.9	3,305,290	3,135,293	7.7	-5.1
Grain Bulk	3,008	0.1	1198.3	27,239	10,818	0.0	-60.3
Liquid	35,284	0.8	-54.0	138,188	201,090	0.5	45.5
Petroleum	4,216,259	93.9	10.4	36,812,581	36,864,853	90.9	0.1
Total	4,490,484	100.0	2.5	40,424,520	40,546,436	100.0	0.3

Port of Corpus Christi Cargo
 Sep. 2003 vs. Sep. 2004
 (Inbound – In Millions of U.S. Tons): Up 2.5%



Outbound Cargo Type		03 vs. 04		YTD			
Cargo Type	Sep 04	%Share	%Chg	YTD 03	YTD 04	%Share	%Chg
Break Bulk	113,933	4.5	-97653.7	197,877	242,729	1.1	22.7
Chemical	177,527	7.0	26.1	1,362,631	1,563,893	6.8	14.8
Containers	0	0.0	0.0	0	0	0.0	0.0
Dry Bulk	83,471	3.3	-63.2	2,022,346	2,028,010	8.9	0.3
Grain Bulk	169,459	6.7	38.9	1,049,779	1,525,364	6.7	45.3
Liquid	0	0.0	-100.0	28,607	97,877	0.4	242.1
Petroleum	1,982,064	78.5	-1.0	18,260,029	17,386,419	76.1	-4.8
Total	2,526,453	100.0	0.3	22,921,269	22,844,291	100.0	-0.3

(Outbound – In Millions of U.S. Tons): Up 0.3%



Source: Port of Corpus Christi

Note: Totals may not add up due to rounding.

Table 1
U.S.-Mexico Total Trade Dollar Value via Top 5 U.S.-Mexico Border Ports
Merchandise Composition by 1-Digit SITC Code
September 2003 Year-to-Date vs. September 2004 Year-to-Date
(Continued)

Hidalgo, Texas		Total Trade \$ Value YTD		% Change YTD	% Share YTD	
SITC	Description	Sep 2003	Sep 2004	2003 vs. 2004	Sep 2003	Sep 2004
0	Food and Live Animals	578,069,162	610,020,193	5.5	5.5	5.1
1	Beverages and Tobacco	11,701,035	19,489,583	66.6	0.1	0.2
2	Crude Materials, Inedible, Except Fuels	43,246,199	53,839,468	24.5	0.4	0.4
3	Mineral Fuels, Lubricants and Related Materials	445,333,530	160,578,963	-63.9	4.2	1.3
4	Animal and Vegetable Oils, Fats and Waxes	1,011,938	593,977	-41.3	0.0	0.0
5	Chemicals and Related Products, N.E.S.	211,864,296	265,002,432	25.1	2.0	2.2
6	Manufactured Goods Classified Chiefly by Material	837,166,004	895,948,100	7.0	8.0	7.5
7	Machinery and Transport Equipment	6,246,306,996	7,609,529,790	21.8	59.4	63.4
8	Miscellaneous Manufactured Articles	1,942,073,222	2,115,470,695	8.9	18.5	17.6
9	Commodities and Transactions not Classified Elsewhere in the SITC	194,325,798	274,797,024	41.4	1.8	2.3
Total		10,511,098,180	12,005,270,225	14.2	100.0	100.0

Nogales, Arizona		Total Trade \$ Value YTD		% Change YTD	% Share YTD	
SITC	Description	Sep 2003	Sep 2004	2003 vs. 2004	Sep 2003	Sep 2004
0	Food and Live Animals	555,981,673	610,643,543	9.8	5.3	5.1
1	Beverages and Tobacco	17,258,117	11,584,718	-32.9	0.2	0.1
2	Crude Materials, Inedible, Except Fuels	46,375,971	89,642,947	93.3	0.4	0.8
3	Mineral Fuels, Lubricants and Related Materials	147,223,344	139,823,849	-5.0	1.4	1.2
4	Animal and Vegetable Oils, Fats and Waxes	478,699	540,552	12.9	0.0	0.0
5	Chemicals and Related Products, N.E.S.	229,033,237	237,333,229	3.6	2.2	2.0
6	Manufactured Goods Classified Chiefly by Material	793,184,410	862,935,950	8.8	7.6	7.3
7	Machinery and Transport Equipment	6,591,778,797	7,795,198,341	18.3	62.9	65.6
8	Miscellaneous Manufactured Articles	1,879,239,717	1,772,898,149	-5.7	17.9	14.9
9	Commodities and Transactions not Classified Elsewhere in the SITC	213,179,013	365,899,156	71.6	2.0	3.1
Total		10,473,732,978	11,886,500,434	13.5	100.0	100.0

Source: U.S. Department of Commerce data compiled by the Texas Center at Texas A&M International University, Laredo, Texas.

Subscribe now to *Border Business Indicators!* Annual subscription rate is \$36.00 (12 monthly issues). Enclose this subscription form or photocopy with payment. Payable in U.S. funds only.

Type of Subscription: Name _____
 New
 Renewal Title _____

Check Method of Payment: Affiliation/Co. _____
 Check
 Money Order Address _____

Payable to: City _____
 Texas A&M International University

Send subscription to: State _____ Zip _____ Country _____
 Texas A&M International University
 Border Business Indicators Telephone () _____
 Texas Center
 5201 University Boulevard E-mail Address _____
 Laredo, TX 78041-1900



Texas A&M International University
 Texas Center for Border Economic and Enterprise Development
 5201 University Boulevard
 Laredo, TX 78041-1900

Non-Profit Org.
 U.S. Postage Paid
 Laredo, Texas
 78041
 Permit 231