

Z  
L 250.8  
B644BT  
29:12

# Border Business Indicators

Texas Center for Border Economic and Enterprise Development

Vol. 29 No. 12 • December 2005

## U.S.-Mexico Trade Figures Show Continued Growth in Trade

Last year, U.S.-Mexico trade registered double-digit growth on an average of 13.2%. This year the average growth was 8.2% through October 2005. Even though this year's percentage growth may not reach double digits, trade between both countries undoubtedly will surpass 2004 figures.

U.S. exports to Mexico—up to October 2005—maintained a 8.0 percent increase over the same period in 2004. Similarly, U.S. imports from Mexico, continued posting an increase of 8.5 percent for the same period.

In Table 1, the total dollar value of all merchandise trade (\$239.2 billion) was up 8.3 percent for October 2005 year-to-date (YTD) against the same period in 2004 (\$220.9 billion). Although, trade between the trading partners was up, the U.S.

widened its trade deficit with Mexico. The October 2004 YTD deficit was \$37.7 billion. U.S. imports from Mexico have outpaced exports to Mexico in 2005 that has resulted in an October 2005 YTD deficit of \$41.4 billion or a 9.4 percent increase.

Of the \$239.2 billion dollar value of this merchandise trade between the two trading partners in 2005 YTD, \$192.0 billion or 80.3 percent was processed at U.S.-Mexico border ports of entry. Texas border ports of entry accounted for \$148.0 billion or 77.1 percent of the total trade merchandise value (See Table 2 and 3).

On the back page, tables 5 and 6 delineate the 27 ports of entry on the U.S.-Mexico border, and the dollar value of U.S. exports to Mexico, and U.S. imports from Mexico passing through them respectively. —B. Garcia

**Table 1**  
U.S.-Mexico Trade  
(In Billions of U.S. Dollars)

	2004 Oct YTD Total	2005 Oct YTD Total	'04 vs. '05 Percent Change
U.S. Exports to Mexico	91.6	98.9	8.0
U.S. Imports from Mexico	129.3	140.3	8.5
<b>Total Trade</b>	<b>220.9</b>	<b>239.2</b>	<b>8.3</b>

**Table 2**  
U.S.-Mexico Trade Processed by U.S.-Mexico Border Ports  
(In Billions of U.S. Dollars)

	2004 Oct YTD Total	2005 Oct YTD Total	'04 vs. '05 Percent Change
U.S. Exports to Mexico	77.5	82.7	6.7
U.S. Imports from Mexico	103.7	109.3	5.4
<b>Total Trade</b>	<b>181.2</b>	<b>192.0</b>	<b>6.0</b>

**Table 3**  
U.S.-Mexico Trade Processed by Texas Border Ports  
(In Billions of U.S. Dollars)

	2004 Oct YTD Total	2005 Oct YTD Total	'04 vs. '05 Percent Change
Texas Border Ports	141.4	148.0	4.7
Other U.S.-Mexico Border Ports	39.9	44.0	10.3
<b>Total Trade</b>	<b>181.3</b>	<b>192.0</b>	<b>5.9</b>

**Table 4**  
Total U.S.-Mexico Trade  
Processed by U.S.-Mexico Border Ports  
(In U.S. Dollars)

Port of Entry	2004 Oct YTD Total	2005 Oct YTD Total	'04 vs. '05 Percent Change
Brownsville	9,098,518,288	9,557,315,209	5.0
Del Rio	2,349,214,986	2,570,096,512	9.4
Eagle Pass	5,708,897,985	6,175,566,192	8.2
Laredo	74,483,294,833	77,719,645,386	4.3
Hidalgo	13,284,378,650	15,246,663,072	14.8
Rio Grande	178,779,763	189,364,848	5.9
Progreso	121,107,161	108,661,528	-10.3
Roma	62,226,162	65,163,317	4.7
Edinburg Airport	0	465,300	-
El Paso	35,745,903,601	36,013,616,338	0.7
Presidio	307,879,676	313,401,885	1.8
Fabens	29,669,545	4,319,363	-85.4
Columbus	38,386,697	40,625,769	5.8
Santa Teresa	946,839,047	958,022,643	1.2
Santa Teresa Airport	25,157	7,875	-68.7
Andrade	1,905,181	2,422,669	27.2
Calexico	7,690,051	6,235,411	-18.9
San Ysidro	30,434,216	109,413,624	259.5
Tecate	841,591,299	974,092,629	15.7
Otay Mesa Station	18,519,265,331	20,064,124,381	8.3
Calexico-East	8,053,257,395	8,912,785,890	10.7
Douglas	622,051,854	937,089,095	50.6
Lukeville	7,873,338	13,529,337	71.8
Naco	74,279,816	92,718,841	24.8
Nogales	9,953,772,617	11,136,807,557	11.9
Sasabe	18,465,004	5,563,240	-69.9
San Luis	763,569,739	792,146,907	3.7
<b>Total Trade</b>	<b>181,249,277,392</b>	<b>192,009,864,818</b>	<b>5.9</b>

Note: Figures may not match due to rounding.

Continued on Back Page

**Need More Detailed Information?**

For more detailed information regarding border crossings, economic indicators and trade activity, visit the Center's web site:

<http://texascenter.tamiu.edu>

**Technical Reports**

The Texas Center's research activities have resulted in a series of technical reports on border economic issues ranging from infrastructure needs and environmental issues to the impact of NAFTA on Texas-Mexico trade relations and future business opportunities.

The Center continues its research tradition with activities spanning those areas involving border trade, business development and economic issues.

New research encompassing areas such as community development, health, culture, education and socioeconomic issues have been added to the series.

Technical Reports are freely available online for download in PDF format, unless otherwise noted.

The *Border Business Indicators* (ISSN 1091-9104) is published by the Texas Center for Border Economic and Enterprise Development, at Texas A&M International University in Laredo, Texas.

Dr. Ray M. Keck, III  
President, Texas A&M International University

Dr. J. Michael Patrick  
Director, Texas Center

Baldomero G. Garcia  
Program Manager, Texas Center

Jacqueline O. Benavides  
Data & Information Specialist, Texas Center

Leo Lozano  
Database Specialist, Texas Center

Jesus Araiza  
Student Research Assistant, Texas Center

Further information may be obtained by calling:

TEL. (956) 326-2546  
FAX (956) 326-2544

or by writing to the addresses below:

E-mail: [texascenter@tamiu.edu](mailto:texascenter@tamiu.edu)  
Texas A&M International University  
Texas Center  
5201 University Boulevard  
Laredo, TX 78041-1900

Produced by the TAMIU Print Shop  
on Recycled Paper



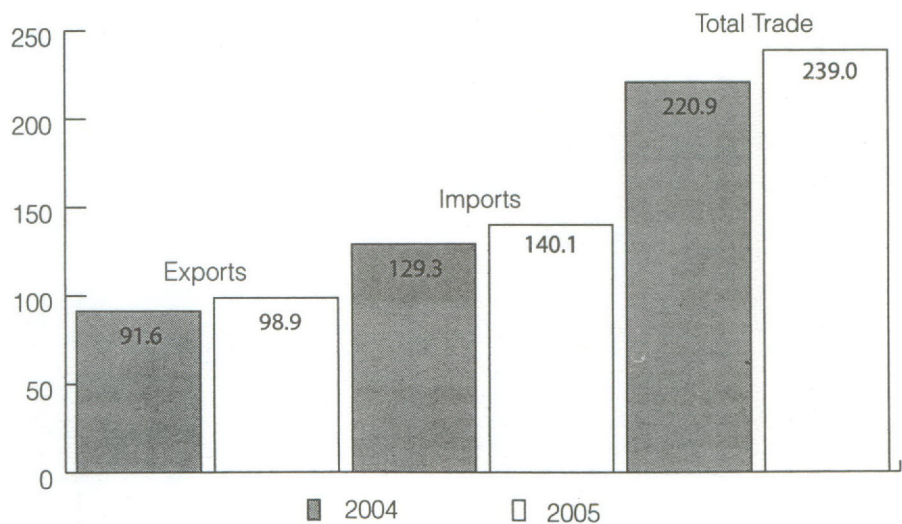
**Note from the Director**

Indicators of border business activity for October 2005 year-to-date (YTD) demonstrated fifteen indicators increased and seven decreased. 2005 YTD comparisons to 2004 reported for the border are listed below:

- Pedestrian bridge crossings into Mexico were down 5.4 percent.
- Pedestrian bridge crossings into Texas were down 6.8 percent.
- Vehicle bridge crossings into Mexico fell 1.7 percent.
- Vehicle bridge crossings into Texas fell 3.9 percent.
- Truck bridge crossings into Mexico gained 4.2 percent.
- Truck bridge crossings into Texas gained 3.2 percent.
- Rail car bridge crossings into Mexico went up 5.6 percent.
- Rail car bridge crossings into Texas went up 2.4 percent.
- Revenues collected by U.S. Customs increased 12.5 percent.
- Revenues collected by U.S. bridge operators registered a gain 0.5 percent.
- Tourist visas issued for entry into Mexico were down 4.4 percent.
- Total employment was up 0.5 percent, with 2,567 jobs gained. The average unemployment rate for the border in October 2005 was 5.5 percent.
- Total building permits issued rose 16.8 percent.
- Total building permit values increased 18.4 percent.
- Power connections in service for residential were up 2.3 percent, commercial were up 2.0 percent and industrial were down 0.9 percent.
- Air passenger arrivals were up 9.8 percent, and departures were up 9.6 percent.
- Total cargo for the Port of Brownsville increased 4.2 percent.
- Inbound cargo for the Port of Corpus Christi went up 3.1 percent, and outbound cargo went down 1.0 percent.

**U.S.-Mexico Trade at a Glance**

October 2005 Year-to-Date  
(In Billions of U.S.\$)



Source: U.S. Census Bureau, Foreign Trade Division, Data Dissemination Branch

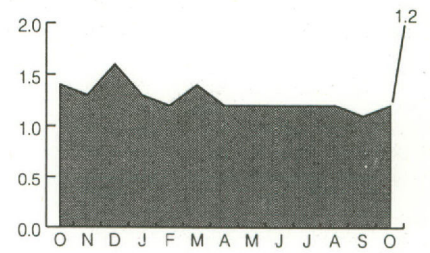
**Disclaimer:** Please note that the data contained in this and all issues of the *Border Business Indicators* is collected from different government agencies and private sources. Readers should note that different data-collecting agencies use dissimilar, often conflicting, techniques in collecting and compiling the information they publish. Because of this lack of uniformity, comparing different data could result in erroneous conclusions. While we are most grateful to our sources for their cooperation, we cannot assume responsibility for the comparability of the data.

**Pedestrian Bridge Crossings from Texas to Mexico**

City	Oct 05	%Share	04 vs. 05		YTD 04	YTD 05	%Share	YTD %Chg
			%Chg					
Brownsville	183,749	15.2	-4.1		1,978,829	1,786,708	14.5	-9.7
Del Rio	3,746	0.3	-35.8		60,124	42,162	0.3	-29.9
Eagle Pass	50,359	4.2	-6.4		495,069	497,528	4.0	0.5
El Paso	439,581	36.3	-24.9		4,828,085	4,561,227	37.0	-5.5
Harlingen	96	0.0	33.3		891	949	0.0	6.5
Laredo	327,348	27.0	-2.9		3,365,159	3,196,253	25.9	-5.0
McAllen-Hidalgo	119,995	9.9	10.6		1,110,202	1,101,066	8.9	-0.8
Progreso	69,746	5.8	-8.3		1,075,073	1,008,103	8.2	-6.2
Rio Grande	92	0.0	84.0		2,172	1,474	0.0	-32.1
Roma	16,746	1.4	37.8		118,584	129,964	1.1	9.6
<b>Total</b>	<b>1,211,458</b>	<b>100.0</b>	<b>-11.6</b>		<b>13,034,188</b>	<b>12,325,434</b>	<b>100.0</b>	<b>-5.4</b>

Source: U.S. bridge operators in cited cities

**Pedestrians into Mexico All Cited Cities**  
Oct. 2004 vs. Oct. 2005: Down 11.6%  
(In Millions)

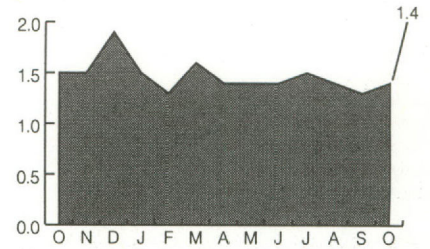


**Pedestrian Bridge Crossings from Mexico to Texas**

City	Oct 05	%Share	04 vs. 05		YTD 04	YTD 05	%Share	YTD %Chg
			%Chg					
Brownsville	212,385	14.8	-1.5		2,229,961	2,157,544	15.0	-3.2
Del Rio	6,002	0.4	-31.3		92,695	66,829	0.5	-27.9
Eagle Pass	57,487	4.0	-6.1		590,701	564,882	3.9	-4.4
El Paso	556,330	38.8	-13.6		6,177,345	5,506,149	38.4	-10.9
Laredo	362,143	25.3	-2.7		3,761,909	3,527,620	24.6	-6.2
McAllen-Hidalgo	147,628	10.3	13.3		1,357,501	1,324,930	9.2	-2.4
Presidio	1,822	0.1	-6.2		21,329	19,444	0.1	-8.8
Progreso	69,934	4.9	-7.8		984,949	999,566	7.0	1.5
Rio Grande	1,018	0.1	14.1		10,382	9,649	0.1	-7.1
Roma	18,167	1.3	14.7		155,582	166,088	1.2	6.8
<b>Total</b>	<b>1,432,916</b>	<b>100.0</b>	<b>-6.1</b>		<b>15,382,354</b>	<b>14,342,701</b>	<b>100.0</b>	<b>-6.8</b>

Source: Oficina de Caminos y Puentes Federales, Mexico

**Pedestrians into Texas All Cited Cities**  
Oct. 2004 vs. Oct. 2005: Down 6.1%  
(In Millions)

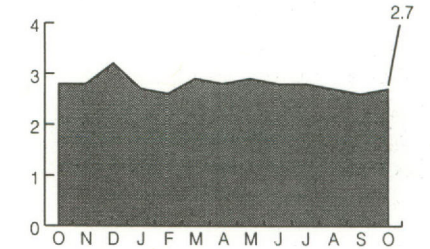


**Vehicle Bridge Crossings from Texas to Mexico**

City	Oct 05	%Share	04 vs. 05		YTD 04	YTD 05	%Share	YTD %Chg
			%Chg					
Brownsville	543,719	20.5	-2.7		5,565,076	5,570,511	20.2	0.1
Del Rio	136,870	5.2	-4.9		1,542,112	1,404,547	5.1	-8.9
Eagle Pass	250,494	9.4	-6.3		2,642,402	2,611,494	9.5	-1.2
El Paso	398,585	15.0	5.9		3,662,676	3,910,402	14.2	6.8
Harlingen	53,046	2.0	-5.5		574,249	575,857	2.1	0.3
Laredo	504,290	19.0	-12.9		5,738,175	5,351,781	19.4	-6.7
McAllen-Hidalgo	443,758	16.7	-2.8		4,540,108	4,480,019	16.3	-1.3
Pharr	115,258	4.3	-21.5		1,463,097	1,436,666	5.2	-1.8
Progreso	78,166	2.9	-5.5		880,433	839,244	3.0	-4.7
Rio Grande	46,572	1.8	-5.6		497,668	494,774	1.8	-0.6
Roma	80,932	3.1	-8.0		880,712	848,559	3.1	-3.7
<b>Total</b>	<b>2,651,690</b>	<b>100.0</b>	<b>-5.5</b>		<b>27,986,708</b>	<b>27,523,854</b>	<b>100.0</b>	<b>-1.7</b>

Source: U.S. bridge operators in cited cities

**Vehicles into Mexico All Cited Cities**  
Oct. 2004 vs. Oct. 2005: Down 5.5%  
(In Millions)

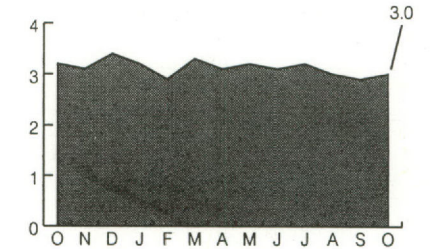


**Vehicle Bridge Crossings from Mexico to Texas**

City	Oct 05	%Share	04 vs. 05		YTD 04	YTD 05	%Share	YTD %Chg
			%Chg					
Brownsville	543,751	18.2	-3.5		5,590,279	5,591,046	18.1	0.0
Del Rio	149,311	5.0	-2.9		1,551,283	1,508,285	4.9	-2.8
Eagle Pass	261,997	8.8	-5.2		2,758,087	2,719,648	8.8	-1.4
El Paso	595,785	20.0	-6.7		6,395,423	5,897,747	19.1	-7.8
Harlingen	59,566	2.0	-4.2		656,037	645,050	2.1	-1.7
Laredo	509,208	17.1	-11.9		5,800,404	5,423,011	17.6	-6.5
McAllen-Hidalgo	405,610	13.6	-6.8		4,289,069	4,270,364	13.8	-0.4
Pharr	182,477	6.1	-3.0		2,018,470	1,925,872	6.2	-4.6
Presidio	58,743	2.0	-1.5		614,171	610,862	2.0	-0.5
Progreso	81,884	2.7	-5.1		969,117	844,359	2.7	-12.9
Rio Grande	52,797	1.8	-4.4		568,990	552,729	1.8	-2.9
Roma	81,003	2.7	-7.7		893,574	855,243	2.8	-4.3
<b>Total</b>	<b>2,982,132</b>	<b>100.0</b>	<b>-6.4</b>		<b>32,104,904</b>	<b>30,844,216</b>	<b>100.0</b>	<b>-3.9</b>

Source: Oficina de Caminos y Puentes Federales, Mexico

**Vehicles into Texas All Cited Cities**  
Oct. 2004 vs. Oct. 2005: Down 6.4%  
(In Millions)



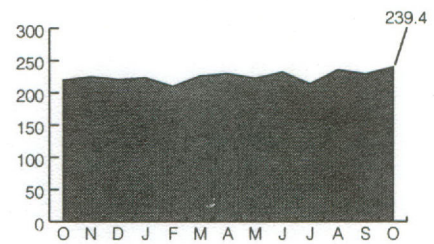
**Truck Bridge Crossings from Texas to Mexico**

City	Oct 05	%Share	04 vs. 05		YTD 04	YTD 05	%Share	YTD %Chg
			%Chg					
Brownsville	17,981	7.5	0.8		168,602	172,527	7.6	2.3
Del Rio	6,181	2.6	11.7		54,421	71,623	3.2	31.6
Eagle Pass	8,301	3.5	1.8		82,991	80,568	3.6	-2.9
El Paso	27,096	11.3	6.1		244,075	256,600	11.4	5.1
Harlingen	3,601	1.5	18.3		31,253	35,938	1.6	15.0
Laredo	136,626	57.1	13.1		1,204,017	1,240,355	54.9	3.0
McAllen-Hidalgo	1,743	0.7	-11.3		18,453	16,814	0.7	-8.9
Pharr	31,987	13.4	4.6		310,956	327,936	14.5	5.5
Progreso	2,426	1.0	-5.7		19,988	19,165	0.8	-4.1
Rio Grande	2,565	1.1	-2.0		23,211	28,283	1.3	21.9
Roma	845	0.4	-4.2		8,967	8,218	0.4	-8.4
<b>Total</b>	<b>239,352</b>	<b>100.0</b>	<b>9.0</b>		<b>2,166,934</b>	<b>2,258,027</b>	<b>100.0</b>	<b>4.2</b>

Source: U.S. bridge operators in cited cities

Note: Figures include loaded and empty trucks. El Paso figures do not include Bridge of the Americas.

Trucks into Mexico All Cited Cities  
Oct. 2004 vs. Oct. 2005: Up 9.0%  
(In Thousands)



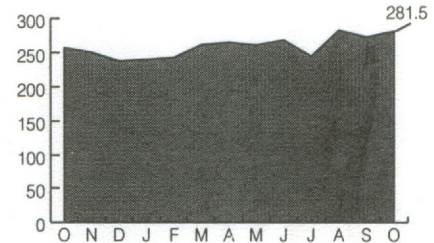
**Truck Bridge Crossings from Mexico to Texas**

City	Oct 05	%Share	04 vs. 05		YTD 04	YTD 05	%Share	YTD %Chg
			%Chg					
Brownsville	16,225	5.8	-1.8		156,665	158,020	6.0	0.9
Del Rio	5,998	2.1	8.3		54,853	53,768	2.1	-2.0
Eagle Pass	8,233	2.9	-4.2		84,327	82,363	3.1	-2.3
El Paso	66,932	23.8	7.4		607,578	617,969	23.6	1.7
Harlingen	3,412	1.2	2.0		33,470	36,711	1.4	9.7
Laredo	131,999	46.9	13.6		1,154,929	1,200,138	45.8	3.9
Pharr	41,537	14.8	10.6		382,411	404,526	15.4	5.8
Presidio	492	0.2	-24.1		5,883	4,162	0.2	-29.3
Progreso	2,388	0.8	-6.3		19,147	19,245	0.7	0.5
Rio Grande	3,632	1.3	9.9		33,952	38,900	1.5	14.6
Roma	633	0.2	-5.5		7,038	6,931	0.3	-1.5
Falcon Heights	8	0.0	-11.1		90	66	0.0	-26.7
<b>Total</b>	<b>281,489</b>	<b>100.0</b>	<b>9.4</b>		<b>2,540,343</b>	<b>2,622,799</b>	<b>100.0</b>	<b>3.2</b>

Source: South Texas Customs Management Center, Laredo & U.S. Customs Office of Public Affairs, El Paso

Note: Figures include loaded and empty trucks.

Trucks into Texas All Cited Cities  
Oct. 2004 vs. Oct. 2005: Up 9.4%  
(In Thousands)



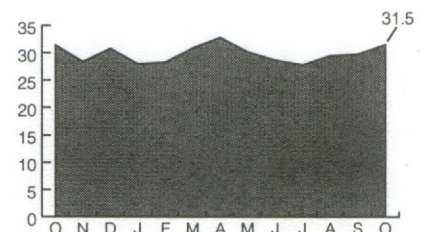
**Rail Car Crossings from Texas to Mexico**

City	Oct 05	%Share	04 vs. 05		YTD 04	YTD 05	%Share	YTD %Chg
			%Chg					
Brownsville	2,977	9.4	-8.3		29,665	31,524	10.6	6.3
Eagle Pass	7,186	22.8	18.9		56,383	64,216	21.6	13.9
El Paso	N/A	N/A	N/A		N/A	N/A	N/A	N/A
Laredo	21,375	67.8	-3.5		195,830	201,805	67.8	3.1
<b>Total</b>	<b>31,538</b>	<b>100.0</b>	<b>0.3</b>		<b>281,878</b>	<b>297,545</b>	<b>100.0</b>	<b>5.6</b>

Source: Railroad companies in cited cities

Note: Figures for El Paso are not available.

Rail Cars into Mexico All Cited Cities  
Oct. 2004 vs. Oct. 2005: Up 0.3%  
(In Thousands)

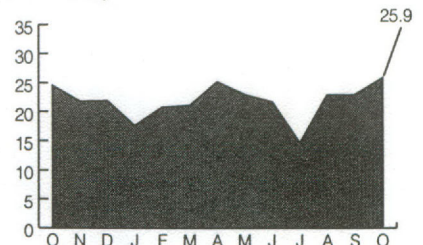


**Rail Car Crossings from Mexico to Texas**

City	Oct 05	%Share	04 vs. 05		YTD 04	YTD 05	%Share	YTD %Chg
			%Chg					
Brownsville	481	1.9	-40.0		4,794	6,135	2.8	28.0
Eagle Pass	2,127	8.2	1.0		16,167	18,690	8.7	15.6
El Paso	7,376	28.5	12.9		46,547	50,830	23.5	9.2
Laredo	15,928	61.5	5.5		143,256	140,227	65.0	-2.1
<b>Total</b>	<b>25,912</b>	<b>100.0</b>	<b>5.6</b>		<b>210,764</b>	<b>215,882</b>	<b>100.0</b>	<b>2.4</b>

Source: Railroad companies in cited cities & U.S. Customs Office of Public Affairs, El Paso

Rail Cars into Texas All Cited Cities  
Oct. 2004 vs. Oct. 2005: Up 5.6%  
(In Thousands)

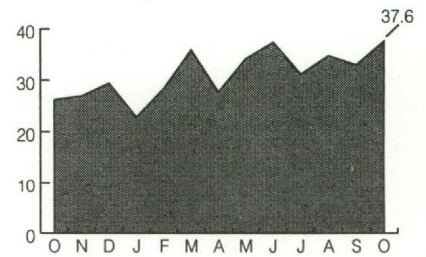


**Revenues Collected by U.S. Customs District of Laredo (in U.S.\$)**

City	Oct 05	%Share	04 vs. 05		YTD 04	YTD 05	%Share	YTD %Chg
			%Chg					
Brownsville	4,480,134	11.9	87.5		22,720,902	25,718,247	8.0	13.2
Del Rio	114,139	0.3	-44.6		1,098,567	1,178,291	0.4	7.3
Eagle Pass	1,500,702	4.0	17.5		8,874,699	13,027,671	4.0	46.8
McAllen-Hidalgo	4,258,940	11.3	18.0		38,545,960	41,545,020	12.9	7.8
Laredo	27,165,320	72.3	45.4		214,992,535	240,729,614	74.5	12.0
Progreso	28,220	0.1	-13.6		283,312	264,940	0.1	-6.5
Rio Grande	17,012	0.0	-37.4		271,761	219,728	0.1	-19.1
Roma	15,212	0.0	-37.6		353,808	231,513	0.1	-34.6
<b>Total</b>	<b>37,579,680</b>	<b>100.0</b>	<b>43.2</b>		<b>287,141,543</b>	<b>322,915,023</b>	<b>100.0</b>	<b>12.5</b>

Source: South Texas Customs Management Center, Laredo  
 Note: Totals may not add up due to rounding.

Customs Revenues for the District of Laredo  
 Oct. 2004 vs. Oct. 2005: Up 43.2%  
 (In Millions of U.S.\$)

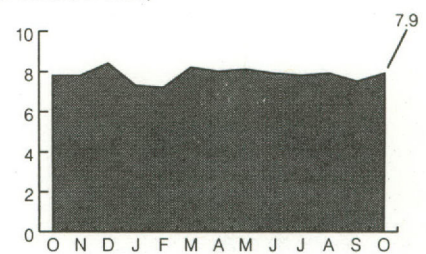


**Revenues Collected by U.S. Bridge Operators (in U.S.\$)**

City	Oct 05	%Share	04 vs. 05		YTD 04	YTD 05	%Share	YTD %Chg
			%Chg					
Brownsville	1,263,172	16.0	5.9		11,710,060	11,816,255	15.2	0.9
Del Rio	281,482	3.6	-21.5		3,405,167	2,846,795	3.7	-16.4
Eagle Pass	554,029	7.0	-5.6		5,746,236	5,747,986	7.4	0.0
El Paso	1,185,207	15.0	3.4		11,105,104	11,519,387	14.8	3.7
Harlingen	176,769	2.2	8.4		1,630,496	1,727,777	2.2	6.0
Laredo	2,799,727	35.5	0.0		27,420,208	27,300,843	35.2	-0.4
McAllen-Hidalgo	935,757	11.9	10.8		8,395,012	9,293,516	12.0	10.7
Pharr	509,324	6.5	-9.0		5,908,170	5,540,859	7.1	-6.2
Roma	179,607	2.3	-6.4		1,927,589	1,860,981	2.4	-3.5
<b>Total</b>	<b>7,885,075</b>	<b>100.0</b>	<b>0.5</b>		<b>77,248,041</b>	<b>77,654,399</b>	<b>100.0</b>	<b>0.5</b>

Source: U.S. bridge operators in cited cities  
 Note: El Paso figures do not include Bridge of the Americas (Toll-free). Totals may not add up due to rounding.

Bridge Revenues All Cited Cities  
 Oct. 2004 vs. Oct. 2005: Up 0.5%  
 (In Millions of U.S.\$)

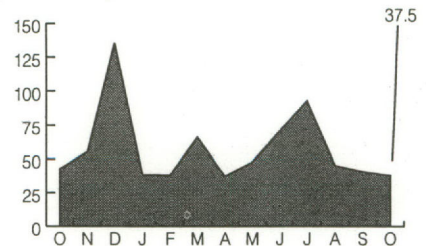


**Tourist Visas Issued for Entry into Mexico**

City	Oct 05	%Share	04 vs. 05		YTD 04	YTD 05	%Share	YTD %Chg
			%Chg					
Del Rio	457	1.2	-14.3		7,815	6,025	1.2	-22.9
El Paso	7,276	19.4	-11.2		97,669	99,297	19.4	1.7
McAllen-Hidalgo	7,951	21.2	-9.4		116,779	109,402	21.3	-6.3
Brownsville	4,705	12.6	-7.1		63,680	65,703	12.8	3.2
Laredo	14,864	39.7	-16.3		223,312	205,833	40.2	-7.8
Eagle Pass	2,234	6.0	-5.2		26,986	26,388	5.1	-2.2
<b>Total</b>	<b>37,487</b>	<b>100.0</b>	<b>-12.2</b>		<b>536,241</b>	<b>512,648</b>	<b>100.0</b>	<b>-4.4</b>

Source: Instituto Nacional de Migracion, Mexico

Tourist Visas Issued All Cited Cities  
 Oct. 2004 vs. Oct. 2005: Down 12.2%  
 (In Thousands)

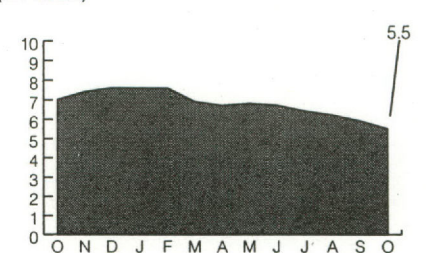


**Employment & Unemployment Rates (Texas Border)**

City	Employed		%Unemp	Emp Avg		04 vs. 05		Gain/Loss
	Oct 05	Oct 05		YTD 04	YTD 05	Emp %Chg	YTD	
Brownsville	56,746	3,772	6.2	48,055	56,100	16.7	8,045	
Del Rio	14,528	838	5.5	15,410	14,474	-6.1	-936	
El Paso	243,961	14,940	5.8	247,403	243,360	-1.6	-4,043	
Harlingen	24,102	1,402	5.5	27,595	23,827	-13.7	-3,768	
Laredo	77,442	3,933	4.8	76,362	75,760	-0.8	-602	
McAllen	54,547	2,570	4.5	53,714	53,304	-0.8	-410	
Pharr	20,770	1,133	5.2	16,017	20,297	26.7	4,280	
<b>Total</b>	<b>492,096</b>	<b>28,588</b>	<b>5.5</b>	<b>484,555</b>	<b>487,122</b>	<b>0.5</b>	<b>2,567</b>	
<b>Texas Unemployment Rate</b>			<b>5.1</b>					
<b>U.S. Unemployment Rate</b>			<b>4.6</b>					

Source: Texas Workforce Commission  
 Note: Figures are preliminary and subject to revision. Totals may not add up due to rounding.

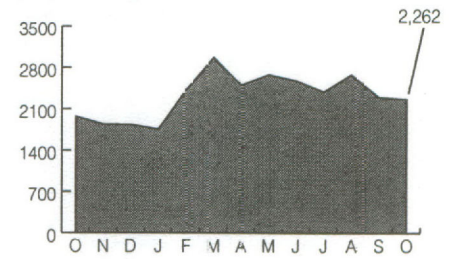
Percent of Unemployment All Cited Cities Combined  
 Oct. 2004 vs. Oct. 2005: Down 23.2%  
 (In Percent)



**Building Permits**

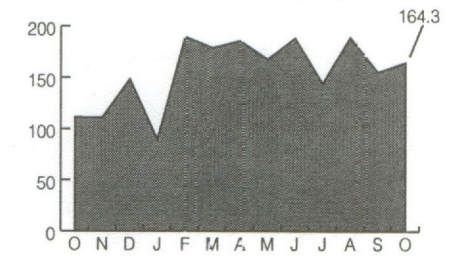
Number	04 vs. 05			YTD			
City	Oct 05	%Share	%Chg	YTD 04	YTD 05	%Share	%Chg
Brownsville	235	10.4	-0.8	3,310	3,007	12.3	-9.2
Del Rio	182	8.0	198.4	898	1,706	7.0	90.0
Eagle Pass	40	1.8	-2.4	492	488	2.0	-0.8
El Paso	1,030	45.5	-2.8	9,626	10,992	44.8	14.2
Harlingen	268	11.8	436.0	971	2,788	11.4	187.1
Laredo	345	15.3	7.1	3,364	3,710	15.1	10.3
McAllen	162	7.2	-18.6	2,344	1,839	7.5	-21.5
<b>Total</b>	<b>2,262</b>	<b>100.0</b>	<b>14.8</b>	<b>21,005</b>	<b>24,530</b>	<b>100.0</b>	<b>16.8</b>

Building Permits All Cited Cities  
Oct. 2004 vs. Oct. 2005  
(Number of Permits): Up 14.8%



Dollar Value	04 vs. 05			YTD			
City	Oct 05	%Share	%Chg	YTD 04	YTD 05	%Share	%Chg
Brownsville	12,859,332	7.8	-29.5	220,587,652	227,451,147	13.8	3.1
Del Rio	1,521,100	0.9	-23.0	21,725,475	23,381,099	1.4	7.6
Eagle Pass	2,412,306	1.5	23.8	38,008,796	42,355,382	2.6	11.4
El Paso	102,087,328	62.1	137.2	477,108,695	757,469,694	45.8	58.8
Harlingen	6,739,879	4.1	118.0	107,368,355	66,122,387	4.0	-38.4
Laredo	20,359,861	12.4	17.8	327,140,775	366,286,618	22.2	12.0
McAllen	18,327,134	11.2	-28.9	203,845,598	169,097,033	10.2	-17.0
<b>Total</b>	<b>164,306,940</b>	<b>100.0</b>	<b>47.6</b>	<b>1,395,785,347</b>	<b>1,652,163,360</b>	<b>100.0</b>	<b>18.4</b>

(Value of Permits In Millions of U.S.\$): Up 47.6%

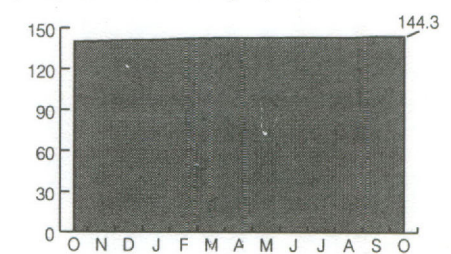


Source: Permit Departments in cited cities  
Note: Dollar value totals may not add up due to rounding.

**Power Connections (in Service)**

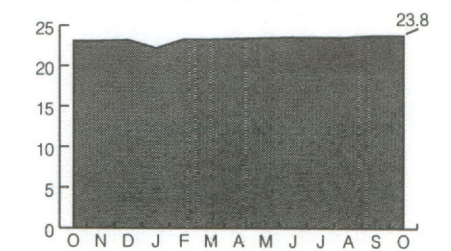
Residential	04 vs. 05			Average		YTD	
City	Oct 05	%Share	%Chg	YTD 04	YTD 05	%Share	%Chg
Brownsville	N/A	N/A	N/A	N/A	N/A	N/A	N/A
Del Rio	14,700	10.2	1.0	14,593	14,682	10.3	0.6
Eagle Pass	10,829	7.5	3.3	10,462	10,744	7.5	2.7
El Paso	N/A	N/A	N/A	N/A	N/A	N/A	N/A
Harlingen	23,080	16.0	1.9	22,744	23,078	16.1	1.5
Laredo	58,674	40.7	3.9	56,252	57,950	40.5	3.0
McAllen	36,972	25.6	3.4	35,798	36,673	25.6	2.4
<b>Total</b>	<b>144,255</b>	<b>100.0</b>	<b>3.1</b>	<b>139,849</b>	<b>143,126</b>	<b>100.0</b>	<b>2.3</b>

Power Connections All Cited Cities  
Oct. 2004 vs. Oct. 2005  
(Residential - In Thousands): Up 3.1%



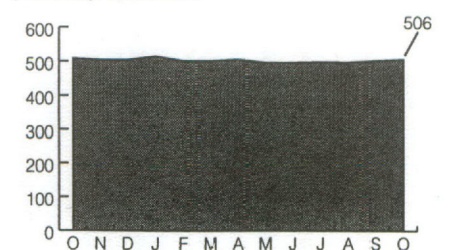
Commercial	04 vs. 05			Average		YTD	
City	Oct 05	%Share	%Chg	YTD 04	YTD 05	%Share	%Chg
Brownsville	N/A	N/A	N/A	N/A	N/A	N/A	N/A
Del Rio	2,336	9.8	2.2	2,290	2,309	9.9	0.8
Eagle Pass	1,696	7.1	3.9	1,612	1,687	7.2	4.7
El Paso	N/A	N/A	N/A	N/A	N/A	N/A	N/A
Harlingen	4,058	17.1	2.9	3,920	3,904	16.7	-0.4
Laredo	8,985	37.8	2.6	8,712	8,901	38.0	2.2
McAllen	6,693	28.2	3.2	6,417	6,604	28.2	2.9
<b>Total</b>	<b>23,768</b>	<b>100.0</b>	<b>2.9</b>	<b>22,950</b>	<b>23,405</b>	<b>100.0</b>	<b>2.0</b>

(Commercial - In Thousands): Up 2.9%



Industrial	04 vs. 05			Average		YTD	
City	Oct 05	%Share	%Chg	YTD 04	YTD 05	%Share	%Chg
Brownsville	N/A	N/A	N/A	N/A	N/A	N/A	N/A
Del Rio	44	8.7	0.0	43	44	8.9	2.8
Eagle Pass	31	6.1	3.3	30	31	6.1	3.7
El Paso	N/A	N/A	N/A	N/A	N/A	N/A	N/A
Harlingen	101	20.0	-2.9	102	102	20.4	0.2
Laredo	205	40.5	-1.0	209	204	40.6	-2.5
McAllen	125	24.7	1.6	123	121	24.1	-1.5
<b>Total</b>	<b>506</b>	<b>100.0</b>	<b>-0.4</b>	<b>506</b>	<b>502</b>	<b>100.0</b>	<b>-0.9</b>

(Industrial): Down 0.4%

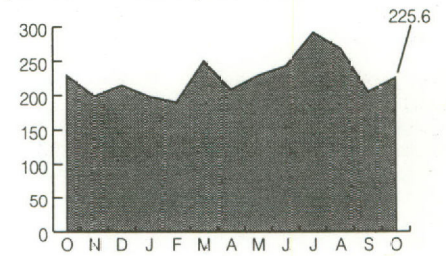


Source: American Electric Power Company, Brownsville Public Utilities Board & El Paso Electric Company  
Note: Totals may not add up due to rounding.

**Air Passenger Service Activity (Number of Passengers)**

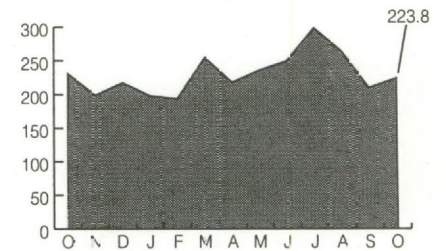
Arrivals City	Oct 05	%Share	04 vs. 05		YTD 04	YTD 05	%Share	YTD %Chg
			%Chg					
Brownsville	6,732	3.0	-79.9		82,690	123,658	5.4	49.5
El Paso	140,947	62.5	8.1		1,336,956	1,388,760	60.1	3.9
Harlingen	40,958	18.2	26.0		359,200	419,409	18.2	16.8
Laredo	7,443	3.3	4.1		65,807	78,693	3.4	19.6
McAllen	29,535	13.1	15.4		258,525	298,840	12.9	15.6
<b>Total</b>	<b>225,615</b>	<b>100.0</b>	<b>-1.5</b>		<b>2,103,178</b>	<b>2,309,360</b>	<b>100.0</b>	<b>9.8</b>

**Air Passenger Activity All Cited Cities**  
Oct. 2004 vs. Oct. 2005  
(Arrivals - In Thousands): Down 1.5%



Departures City	Oct 05	%Share	04 vs. 05		YTD 04	YTD 05	%Share	YTD %Chg
			%Chg					
Brownsville	6,835	3.1	-79.0		83,342	128,857	5.5	54.6
El Paso	140,895	62.9	7.5		1,354,457	1,406,808	60.0	3.9
Harlingen	39,761	17.8	15.6		373,264	427,244	18.2	14.5
Laredo	7,123	3.2	0.6		65,362	76,103	3.2	16.4
McAllen	29,209	13.1	15.0		261,854	304,745	13.0	16.4
<b>Total</b>	<b>223,823</b>	<b>100.0</b>	<b>-2.9</b>		<b>2,138,279</b>	<b>2,343,757</b>	<b>100.0</b>	<b>9.6</b>

(Departures - In Thousands): Down 2.9%

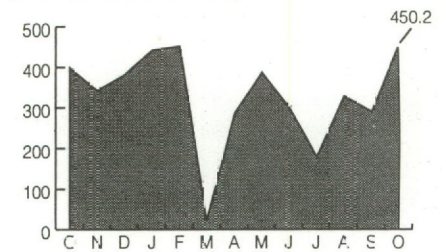


Source: Airports in cited cities

**Port of Brownsville (Total Cargo in Metric Tons)**

Cargo Type	Oct 05	%Share	04 vs. 05		YTD 04	YTD 05	%Share	YTD %Chg
			%Chg					
Break Bulk	286,877	63.7	35.8		1,535,344	1,461,460	46.6	-4.8
Containers	0.0	0.0	0.0		0.0	0.0	0.0	0.0
Grain Bulk	0.0	0.0	0.0		41,383	14,403	0.5	-65.2
Liquid	2,514	0.6	622.5		18,422	188,142	6.0	921.3
Machinery	13,333	3.0	-39.2		196,931	65,526	2.1	-66.7
Ores - Minerals	0.0	0.0	0.0		0.0	80,587	2.6	0.0
Other	0.0	0.0	0.0		0.0	205,601	6.6	0.0
Petroleum	147,468	32.8	-10.0		1,218,872	1,022,522	32.6	-16.1
Steel - Other Minerals	0.0	0.0	0.0		0.0	98,448	3.1	0.0
<b>Total</b>	<b>450,151</b>	<b>95.7</b>	<b>609.1</b>		<b>3,010,952</b>	<b>3,136,689</b>	<b>100.0</b>	<b>4.2</b>

**Port of Brownsville Total Cargo**  
Oct. 2004 vs. Oct. 2005: Up 609.1%  
(In Thousands of Metric Tons)



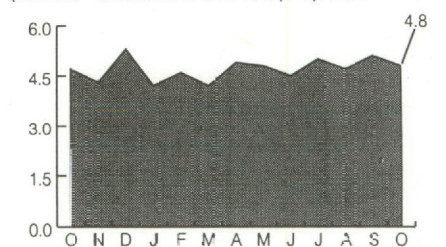
Source: Port of Brownsville

Note: Totals may not add up due to rounding.

**Port of Corpus Christi (Cargo in U.S. Tons)**

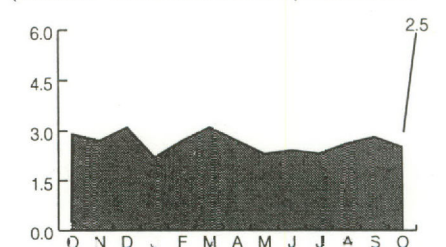
Inbound Cargo Type	Oct 05	%Share	04 vs. 05		YTD 04	YTD 05	%Share	YTD %Chg
			%Chg					
Break Bulk	7,194	0.1	-74.1		274,329	232,263	0.5	-15.3
Chemical	7,310	0.2	7.9		94,570	119,238	0.3	26.1
Containers	0.0	0.0	0.0		0.0	0.0	0.0	0.0
Dry Bulk	546,166	11.3	27.4		3,564,057	4,670,418	10.0	31.0
Grain Bulk	1,527	0.0	0.0		10,818	9,409	0.0	-13.0
Liquid	0	0.0	-100.0		228,987	251,059	0.5	9.6
Petroleum	4,252,716	88.3	0.1		41,112,418	41,401,822	88.7	0.7
<b>Total</b>	<b>4,814,913</b>	<b>100.0</b>	<b>1.6</b>		<b>45,285,179</b>	<b>46,684,209</b>	<b>100.0</b>	<b>3.1</b>

**Port of Corpus Christi Cargo**  
Oct. 2004 vs. Oct. 2005  
(Inbound - In Millions of U.S. Tons): Up 1.6%



Outbound Cargo Type	Oct 05	%Share	04 vs. 05		YTD 04	YTD 05	%Share	YTD %Chg
			%Chg					
Break Bulk	24,673	1.0	-64.5		312,314	116,184	0.5	-62.8
Chemical	141,269	5.6	-0.2		1,705,403	1,372,052	5.4	-19.5
Containers	0.0	0.0	0.0		0.0	0.0	0.0	0.0
Dry Bulk	217,766	8.6	-48.5		2,450,798	2,815,143	11.0	14.9
Grain Bulk	201,233	7.9	142.6		1,608,315	1,786,950	7.0	11.1
Liquid	10,231	0.4	0.0		97,877	169,287	0.7	73.0
Petroleum	1,945,485	76.6	-11.7		19,589,092	19,242,014	75.5	-1.8
<b>Total</b>	<b>2,540,657</b>	<b>100.0</b>	<b>-13.0</b>		<b>25,763,797</b>	<b>25,501,630</b>	<b>100.0</b>	<b>-1.0</b>

(Outbound - In Millions of U.S. Tons): Down 13.0%



Source: Port of Corpus Christi

Note: Totals may not add up due to rounding.

**Table 5**

**U.S. Exports to Mexico Processed by U.S.-Mexico Border Ports  
(In U.S. Dollars)**

Port of Entry	2004	2005	'04 vs. '05 Percent Change
	Oct YTD Total	Oct YTD Total	
Brownsville	4,746,967,355	5,279,766,270	11.2
Del Rio	1,058,860,326	1,219,256,703	15.1
Eagle Pass	2,756,597,509	2,880,895,740	4.5
Laredo	31,866,528,052	33,624,117,499	5.5
Hidalgo	5,528,204,391	6,379,416,503	15.4
Rio Grande	69,858,464	67,144,202	-3.9
Progreso	113,952,374	101,291,555	-11.1
Roma	52,656,982	57,122,446	8.5
Edinburg Airport	0	465,300	-
El Paso	15,263,822,873	15,660,234,475	2.6
Presidio	179,097,537	204,804,896	14.4
Fabens	29,669,545	4,308,274	-85.5
Columbus	10,673,364	16,492,309	54.5
Santa Teresa	347,710,894	342,806,089	-1.4
Santa Teresa Airport	25,157	7,875	-68.7
Andrade	1,905,181	2,422,669	27.2
Calexico	7,690,051	6,235,411	-18.9
San Ysidro	30,397,355	109,413,624	259.9
Tecate	388,286,162	450,891,521	16.1
Otay Mesa Station	7,567,177,379	7,743,644,106	2.3
Calexico-East	3,465,801,799	3,870,867,456	11.7
Douglas	217,897,208	279,277,008	28.2
Lukeville	7,810,650	13,386,257	71.4
Naco	50,338,131	61,834,089	22.8
Nogales	3,534,395,859	4,069,973,878	15.2
Sasabe	18,465,004	5,563,240	-69.9
San Luis	226,930,498	272,435,231	20.1
<b>Total Exports</b>	<b>77,541,720,100</b>	<b>82,724,074,626</b>	<b>6.7</b>

**Table 6**

**U.S. Imports from Mexico Processed by U.S.-Mexico Border Ports  
(In U.S. Dollars)**

Port of Entry	2004	2005	'04 vs. '05 Percent Change
	Oct YTD Total	Oct YTD Total	
Brownsville	4,351,550,933	4,277,548,939	-1.7
Del Rio	1,290,354,660	1,350,839,809	4.7
Eagle Pass	2,952,300,476	3,294,670,452	11.6
Laredo	42,616,766,781	44,095,527,887	3.5
Hidalgo	7,756,174,259	8,867,246,569	14.3
Rio Grande	108,921,299	122,220,646	12.2
Progreso	7,154,787	7,369,973	3.0
Roma	9,569,180	8,040,871	-16.0
Edinburg Airport	0	0	-
El Paso	20,482,080,728	20,353,381,863	-0.6
Presidio	128,782,139	108,596,989	-15.7
Fabens	0	11,089	-
Columbus	27,713,333	24,133,460	-12.9
Santa Teresa	599,128,153	615,216,554	2.7
Santa Teresa Airport	0	0	-
Andrade	0	0	-
Calexico	0	0	-
San Ysidro	36,861	0	-100.0
Tecate	453,305,137	523,201,108	15.4
Otay Mesa Station	10,952,087,952	12,320,480,275	12.5
Calexico-East	4,587,455,596	5,041,918,434	9.9
Douglas	404,154,646	657,812,087	62.8
Lukeville	62,688	143,080	128.2
Naco	23,941,685	30,884,752	29.0
Nogales	6,419,376,758	7,066,833,679	10.1
Sasabe	0	0	-
San Luis	536,639,241	519,711,676	-3.2
<b>Total Imports</b>	<b>103,707,557,292</b>	<b>109,285,790,192</b>	<b>5.4</b>

Source: U.S. Department of Commerce data compiled by the Texas Center at Texas A&M International University (Tables 1-6)

Subscribe now to *Border Business Indicators*! Annual subscription rate is \$36.00 (12 monthly issues). Enclose this subscription form or photocopy with payment. Payable in U.S. funds only.

Type of Subscription:  
 New  
 Renewal

Name \_\_\_\_\_

Check Method of Payment:  
 Check  
 Money Order

Title \_\_\_\_\_

Affiliation/Co. \_\_\_\_\_

Address \_\_\_\_\_

Payable to:  
 Texas A&M International University

City \_\_\_\_\_

Send subscription to:  
 Texas A&M International University  
 Border Business Indicators  
 Texas Center  
 5201 University Boulevard  
 Laredo, TX 78041-1900

State \_\_\_\_\_ Zip \_\_\_\_\_ Country \_\_\_\_\_

Telephone ( ) \_\_\_\_\_

E-mail Address \_\_\_\_\_



Texas A&M International University  
 Texas Center for Border Economic and Enterprise Development  
 5201 University Boulevard  
 Laredo, TX 78041-1900

Non-Profit Org.  
 U.S. Postage Paid  
 Laredo, Texas  
 78041  
 Permit 231