

Z
L250.8
B644BI
29.11

Government Publications
Texas State Documents

SEP 13 2006

Laredo, Texas

Border Business Indicators

Depository
Dallas-Fort Worth Library

Texas Center for Border Economic and Enterprise Development

Vol. 29 No. 11 • November 2005

U.S.-Mexico Trade Marked Continued Growth in September 2005

September 2005 year-to-date trade figures between the U.S. and Mexico marked continued growth. The total trade dollar value of the merchandise flowing between the trading partners registered a worth of \$212.6 billion. This figure was 8.3 percent above last year's figure of \$196.2 billion for the January-September period. U.S. exports to Mexico, \$81.5 billion year-to-date, have increased over last year's figure by 8.1 percent. U.S. imports have maintained its growth too in the same period, \$124.6 billion

year-to-date, an increase of 8.5 percent over last year.

The tables below focus specifically on the top five border ports of entry on the U.S.-Mexico border and the merchandise processed. The dollar values are of total trade (U.S. exports to Mexico plus U.S. imports from Mexico) for the 2004 and 2005 year-to-date periods. Also included in these tables are the Standard International Trade Classification (SITC) codes and their descriptions. —B. Garcia

Table 1
U.S.-Mexico Total Trade Dollar Value via Top 5 U.S.-Mexico Border Ports of Entry
Merchandise Composition by 1-Digit SITC Code
September 2004 Year-to-Date vs. September 2005 Year-to-Date

Laredo, Texas		Total Trade \$ Value YTD		% Change YTD	% Share YTD	
SITC	Description	Sep 04	Sep 05	2004 vs. 2005	Sep 04	Sep 05
0	Food and Live Animals	2,613,563,796	3,289,904,628	25.9	3.9	4.8
1	Beverages and Tobacco	693,146,948	778,613,320	12.3	1.0	1.1
2	Crude Materials, Inedible, Except Fuels	1,301,636,254	1,419,436,310	9.1	2.0	2.1
3	Mineral Fuels, Lubricants and Related Materials	147,831,580	260,205,202	76.0	0.2	0.4
4	Animal and Vegetable Oils, Fats and Waxes	121,596,614	128,042,595	5.3	0.2	0.2
5	Chemicals and Related Products, N.E.S.	4,804,516,530	5,951,697,307	23.9	7.2	8.6
6	Manufactured Goods Classified Chiefly by Material	8,974,199,414	9,750,964,480	8.7	13.5	14.1
7	Machinery and Transport Equipment	39,039,000,000	39,174,000,000	0.3	58.9	56.7
8	Miscellaneous Manufactured Articles	7,408,202,308	7,340,636,063	-0.9	11.2	10.6
9	Commodities and Transactions not Classified Elsewhere in the SITC	1,186,201,665	995,982,243	-16.0	1.8	1.4
Total		66,289,895,109	69,089,482,148	4.2	100.0	100.0

El Paso, Texas		Total Trade \$ Value YTD		% Change YTD	% Share YTD	
SITC	Description	Sep 04	Sep 05	2004 vs. 2005	Sep 04	Sep 05
0	Food and Live Animals	475,358,912	553,348,626	16.4	1.5	1.7
1	Beverages and Tobacco	206,605,619	256,851,797	24.3	0.6	0.8
2	Crude Materials, Inedible, Except Fuels	245,108,955	334,151,822	36.3	0.8	1.0
3	Mineral Fuels, Lubricants and Related Materials	72,669,231	308,432,602	324.4	0.2	1.0
4	Animal and Vegetable Oils, Fats and Waxes	19,376,602	0	-100.0	0.1	0.0
5	Chemicals and Related Products, N.E.S.	591,164,004	743,457,042	25.8	1.8	2.3
6	Manufactured Goods Classified Chiefly by Material	2,622,157,239	2,977,356,071	13.5	8.2	9.3
7	Machinery and Transport Equipment	21,772,000,000	21,107,000,000	-3.1	68.1	65.8
8	Miscellaneous Manufactured Articles	5,211,064,014	5,146,867,880	-1.2	16.3	16.0
9	Commodities and Transactions not Classified Elsewhere in the SITC	768,957,998	653,557,055	-15.0	2.4	2.0
Total		31,984,462,574	32,081,022,895	0.3	100.0	100.0

Otay Mesa Station, California		Total Trade \$ Value YTD		% Change YTD	% Share YTD	
SITC	Description	Sep 2004	Sep 2005	2004 vs. 2005	Sep 2004	Sep 2005
0	Food and Live Animals	981,497,457	1,030,486,354	5.0	6.0	5.8
1	Beverages and Tobacco	31,538,188	37,807,753	19.9	0.2	0.2
2	Crude Materials, Inedible, Except Fuels	212,818,784	244,385,008	14.8	1.3	1.4
3	Mineral Fuels, Lubricants and Related Materials	0	0	-	0.0	0.0
4	Animal and Vegetable Oils, Fats and Waxes	6,075,806	5,501,533	-9.5	0.0	0.0
5	Chemicals and Related Products, N.E.S.	674,787,715	912,950,905	35.3	4.1	5.2
6	Manufactured Goods Classified Chiefly by Material	1,876,669,513	2,059,006,241	9.7	11.5	11.6
7	Machinery and Transport Equipment	8,586,318,844	9,327,666,848	8.6	52.5	52.7
8	Miscellaneous Manufactured Articles	3,582,031,557	3,546,716,633	-1.0	21.9	20.0
9	Commodities and Transactions not Classified Elsewhere in the SITC	410,416,022	528,202,598	28.7	2.5	3.0
Total		16,362,153,886	17,692,723,873	8.1	100.0	100.0

Continued on Back Page

Need More Detailed Information?

For more detailed information regarding border crossings, economic indicators and trade activity, visit the Center's web site:

<http://texascenter.tamui.edu>

Technical Reports

The Texas Center's research activities have resulted in a series of technical reports on border economic issues ranging from infrastructure needs and environmental issues to the impact of NAFTA on Texas-Mexico trade relations and future business opportunities.

The Center continues its research tradition with activities spanning those areas involving border trade, business development and economic issues.

New research encompassing areas such as community development, health, culture, education and socioeconomic issues have been added to the series.

Technical Reports are freely available online for download in PDF format, unless otherwise noted.

The *Border Business Indicators* (ISSN 1091-9104) is published by the Texas Center for Border Economic and Enterprise Development, at Texas A&M International University in Laredo, Texas.

Dr. Ray M. Keck, III
President, Texas A&M International University

Dr. J. Michael Patrick
Director, Texas Center

Baldomero G. Garcia
Program Manager, Texas Center

Jacqueline O. Benavides
Data & Information Specialist, Texas Center

Leo Lozano
Database Specialist, Texas Center

Jesus Araiza
Student Research Assistant, Texas Center

Further information may be obtained by calling:

TEL. (956) 326-2546
FAX (956) 326-2544

or by writing to the addresses below:

E-mail: texascenter@tamui.edu

Texas A&M International University
Texas Center
5201 University Boulevard
Laredo, TX 78041-1900

Produced by the TAMUI Print Shop
on Recycled Paper



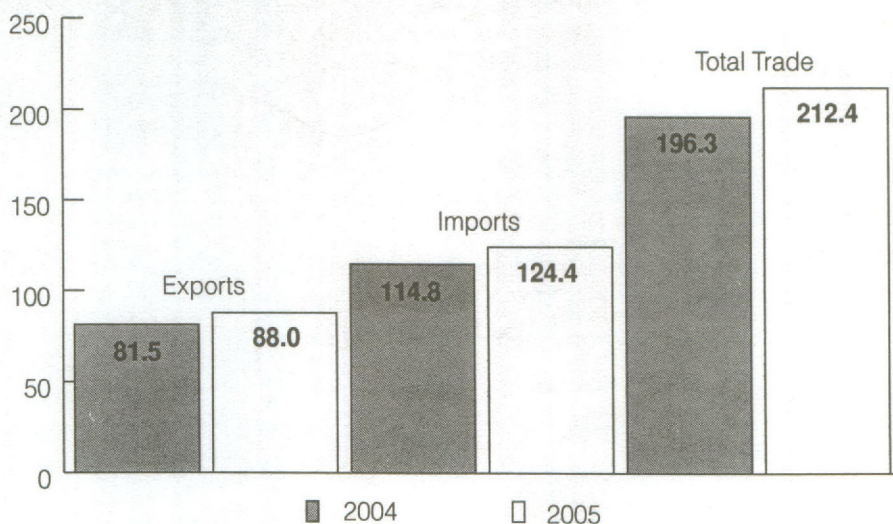
Note from the Director

Indicators of border business activity for September 2005 year-to-date (YTD) demonstrated sixteen indicators increased and six decreased. 2005 YTD comparisons to 2004 reported for the border are listed below:

- Pedestrian bridge crossings into Mexico down 4.7 percent.
- Pedestrian bridge crossings into Texas were down 6.8 percent.
- Vehicle bridge crossings into Mexico fell 1.2 percent.
- Vehicle bridge crossings into Texas fell 3.7 percent.
- Truck bridge crossings into Mexico gained 3.7 percent.
- Truck bridge crossings into Texas gained 2.6 percent.
- Rail car bridge crossings into Mexico went up 6.2 percent.
- Rail car bridge crossings into Texas went up 2.0 percent.
- Revenues collected by U.S. Customs increased 9.4 percent.
- Revenues collected by U.S. bridge operators registered a gain 0.5 percent.
- Tourist visas issued for entry into Mexico down 3.7 percent.
- Total employment was up 0.6 percent, with 2,786 jobs gained. The average unemployment rate for the border in September 2005 was 5.9 percent.
- Total building permits issued rose 17.0 percent.
- Total building permit values increased 15.8 percent.
- Power connections in service for residential were up 2.3 percent, commercial were up 1.9 percent and industrial were down 1.0 percent.
- Air passenger arrivals were up 11.2 percent, and departures were up 11.1 percent.
- Total cargo for the Port of Brownsville increased 10.4 percent.
- Inbound cargo for the Port of Corpus Christi went up 3.3 percent, and outbound cargo went up 0.5 percent.

U.S.-Mexico Trade at a Glance

September 2005 Year-to-Date
(In Billions of U.S.\$)



Source: U.S. Census Bureau, Foreign Trade Division, Data Dissemination Branch

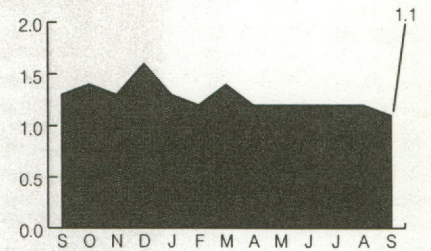
Disclaimer: Please note that the data contained in this and all issues of the *Border Business Indicators* is collected from different government agencies and private sources. Readers should note that different data-collecting agencies use dissimilar, often conflicting, techniques in collecting and compiling the information they publish. Because of this lack of uniformity, comparing different data could result in erroneous conclusions. While we are most grateful to our sources for their cooperation, we cannot assume responsibility for the comparability of the data.

Pedestrian Bridge Crossings from Texas to Mexico

City	Sep 05	%Share	04 vs. 05		YTD 04	YTD 05	%Share	YTD %Chg
			%Chg					
Brownsville	163,789	14.6	-8.1		1,787,166	1,602,959	14.4	-10.3
Del Rio	3,257	0.3	-24.1		54,291	38,416	0.3	-29.2
Eagle Pass	46,710	4.2	-1.3		441,281	447,169	4.0	1.3
El Paso	420,000	37.5	-22.3		4,243,119	4,121,646	37.1	-2.9
Harlingen	70	0.0	2.9		819	853	0.0	4.2
Laredo	304,481	27.2	-1.8		3,028,050	2,868,905	25.8	-5.3
McAllen-Hidalgo	107,528	9.6	9.5		1,001,690	981,071	8.8	-2.1
Progreso	59,664	5.3	-7.8		999,006	938,357	8.4	-6.1
Rio Grande	63	0.0	-37.0		2,122	1,382	0.0	-34.9
Roma	14,325	1.3	34.4		106,428	113,218	1.0	6.4
Total	1,119,887	100.0	-10.7		11,663,972	11,113,976	100.0	-4.7

Source: U.S. bridge operators in cited cities

Pedestrians into Mexico All Cited Cities
Sept. 2004 vs. Sept. 2005: Down 10.7%
(In Millions)

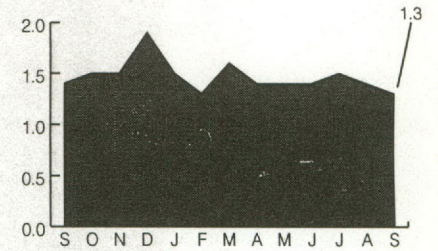


Pedestrian Bridge Crossings from Mexico to Texas

City	Sep 05	%Share	04 vs. 05		YTD 04	YTD 05	%Share	YTD %Chg
			%Chg					
Brownsville	197,790	15.0	-1.4		2,014,375	1,945,159	15.1	-3.4
Del Rio	5,383	0.4	-28.7		83,953	60,827	0.5	-27.5
Eagle Pass	52,275	4.0	-1.9		529,460	507,395	3.9	-4.2
El Paso	524,089	39.7	-11.3		5,533,129	4,949,819	38.3	-10.5
Laredo	330,858	25.1	-3.5		3,389,760	3,165,477	24.5	-6.6
McAllen-Hidalgo	131,305	9.9	9.5		1,227,159	1,177,302	9.1	-4.1
Presidio	1,724	0.1	-12.1		19,386	17,622	0.1	-9.1
Progreso	59,153	4.5	-9.0		909,106	929,632	7.2	2.3
Rio Grande	976	0.1	23.5		9,490	8,631	0.1	-9.1
Roma	16,564	1.3	20.7		139,744	147,921	1.1	5.9
Total	1,320,117	100.0	-5.5		13,855,562	12,909,785	100.0	-6.8

Source: Oficina de Caminos y Puentes Federales, Mexico

Pedestrians into Texas All Cited Cities
Sept. 2004 vs. Sept. 2005: Down 5.5%
(In Millions)

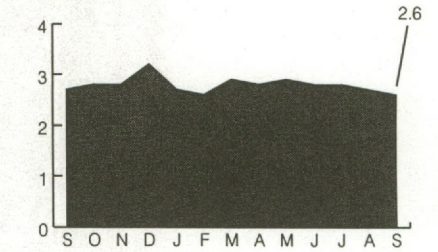


Vehicle Bridge Crossings from Texas to Mexico

City	Sep 05	%Share	04 vs. 05		YTD 04	YTD 05	%Share	YTD %Chg
			%Chg					
Brownsville	519,075	20.2	-2.1		5,006,426	5,026,792	20.2	0.4
Del Rio	133,995	5.2	-10.6		1,398,139	1,267,677	5.1	-9.3
Eagle Pass	240,560	9.4	-3.6		2,374,941	2,361,000	9.5	-0.6
El Paso	381,625	14.8	6.6		3,286,414	3,511,817	14.1	6.9
Harlingen	53,981	2.1	1.5		518,094	522,811	2.1	0.9
Laredo	493,471	19.2	-9.5		5,159,179	4,847,491	19.5	-6.0
McAllen-Hidalgo	423,225	16.5	-2.2		4,083,724	4,036,261	16.2	-1.2
Pharr	124,723	4.9	-10.2		1,316,324	1,321,408	5.3	0.4
Progreso	73,726	2.9	-4.1		797,732	761,078	3.1	-4.6
Rio Grande	44,895	1.7	-4.5		448,348	448,202	1.8	0.0
Roma	81,090	3.2	-0.7		792,715	767,627	3.1	-3.2
Total	2,570,366	100.0	-3.5		25,182,036	24,872,164	100.0	-1.2

Source: U.S. bridge operators in cited cities

Vehicles into Mexico All Cited Cities
Sept. 2004 vs. Sept. 2005: Down 3.5%
(In Millions)

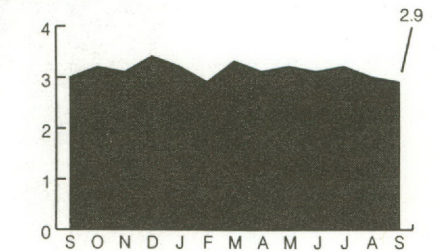


Vehicle Bridge Crossings from Mexico to Texas

City	Sep 05	%Share	04 vs. 05		YTD 04	YTD 05	%Share	YTD %Chg
			%Chg					
Brownsville	517,879	18.0	-2.0		5,026,706	5,047,295	18.1	0.4
Del Rio	143,848	5.0	-3.5		1,397,493	1,358,974	4.9	-2.8
Eagle Pass	248,897	8.7	-4.0		2,481,855	2,457,651	8.8	-1.0
El Paso	574,203	20.0	-4.9		5,756,717	5,301,962	19.0	-7.9
Harlingen	60,088	2.1	0.4		593,854	585,484	2.1	-1.4
Laredo	495,910	17.3	-10.6		5,222,347	4,913,803	17.6	-5.9
McAllen-Hidalgo	397,672	13.8	-3.9		3,854,033	3,864,754	13.9	0.3
Pharr	171,961	6.0	-5.6		1,830,297	1,743,395	6.3	-4.7
Presidio	56,713	2.0	-2.3		554,522	552,119	2.0	-0.4
Progreso	75,239	2.6	-4.9		882,788	762,475	2.7	-13.6
Rio Grande	49,809	1.7	-5.3		513,755	499,932	1.8	-2.7
Roma	79,717	2.8	-3.2		805,786	774,240	2.8	-3.9
Total	2,871,936	100.0	-5.0		28,920,153	27,862,084	100.0	-3.7

Source: Oficina de Caminos y Puentes Federales, Mexico

Vehicles into Texas All Cited Cities
Sept. 2004 vs. Sept. 2005: Down 5.0%
(In Millions)



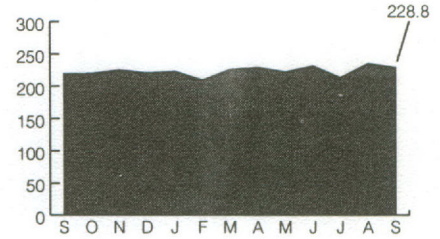
Truck Bridge Crossings from Texas to Mexico

City	Sep 05	%Share	04 vs. 05		YTD 04	YTD 05	%Share	YTD %Chg
			%Chg					
Brownsville	17,939	7.8	3.3		150,765	154,546	7.7	2.5
Del Rio	5,987	2.6	8.4		48,886	65,442	3.2	33.9
Eagle Pass	8,386	3.7	0.7		74,835	72,267	3.6	-3.4
El Paso	26,383	11.5	4.5		218,538	229,504	11.4	5.0
Harlingen	3,871	1.7	8.6		28,210	32,337	1.6	14.6
Laredo	127,585	55.8	5.2		1,083,203	1,103,729	54.7	1.9
McAllen-Hidalgo	1,609	0.7	-11.9		16,489	15,071	0.7	-8.6
Pharr	31,601	13.8	6.0		280,377	295,949	14.7	5.6
Progreso	1,936	0.8	-27.7		17,414	16,739	0.8	-3.9
Rio Grande	2,707	1.2	6.4		20,593	25,718	1.3	24.9
Roma	755	0.3	-2.5		8,085	7,373	0.4	-8.8
Total	228,759	100.0	4.5		1,947,395	2,018,675	100.0	3.7

Source: U.S. bridge operators in cited cities

Note: Figures include loaded and empty trucks. El Paso figures do not include Bridge of the Americas.

Trucks into Mexico All Cited Cities
Sept. 2004 vs. Sept. 2005: Up 4.5%
(In Thousands)



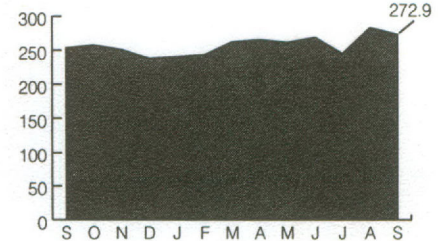
Truck Bridge Crossings from Mexico to Texas

City	Sep 05	%Share	04 vs. 05		YTD 04	YTD 05	%Share	YTD %Chg
			%Chg					
Brownsville	16,455	6.0	2.3		140,139	141,795	6.1	1.2
Del Rio	5,649	2.1	-4.3		49,317	47,770	2.0	-3.1
Eagle Pass	8,421	3.1	-2.9		75,733	74,130	3.2	-2.1
El Paso	65,734	24.1	7.0		545,262	551,037	23.5	1.1
Harlingen	3,815	1.4	2.4		30,124	33,299	1.4	10.5
Laredo	126,020	46.2	10.5		1,038,719	1,068,139	45.6	2.8
Pharr	39,952	14.6	10.3		344,863	362,989	15.5	5.3
Presidio	343	0.1	-36.8		5,235	3,670	0.2	-29.9
Progreso	2,143	0.8	-18.4		16,599	16,857	0.7	1.6
Rio Grande	3,740	1.4	18.8		30,648	35,268	1.5	15.1
Roma	602	0.2	-8.1		6,368	6,298	0.3	-1.1
Falcon Heights	7	0.0	-53.3		81	58	0.0	-28.4
Total	272,881	100.0	7.8		2,283,088	2,341,310	100.0	2.6

Source: South Texas Customs Management Center, Laredo & U.S. Customs Office of Public Affairs, El Paso

Note: Figures include loaded and empty trucks.

Trucks into Texas All Cited Cities
Sept. 2004 vs. Sept. 2005: Up 7.8%
(In Thousands)



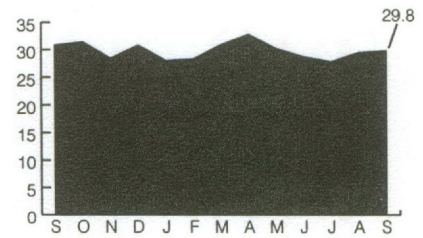
Rail Car Crossings from Texas to Mexico

City	Sep 05	%Share	04 vs. 05		YTD 04	YTD 05	%Share	YTD %Chg
			%Chg					
Brownsville	3,576	12.0	-6.9		26,417	28,547	10.7	8.1
Eagle Pass	6,953	23.4	11.2		50,341	57,030	21.4	13.3
El Paso	N/A	N/A	N/A		N/A	N/A	N/A	N/A
Laredo	19,223	64.6	-7.3		173,679	180,430	67.8	3.9
Total	29,752	100.0	-3.5		250,437	266,007	100.0	6.2

Source: Railroad companies in cited cities

Note: Figures for El Paso are not available.

Rail Cars into Mexico All Cited Cities
Sept. 2004 vs. Sept. 2005: Down 3.5%
(In Thousands)



Rail Car Crossings from Mexico to Texas

City	Sep 05	%Share	04 vs. 05		YTD 04	YTD 05	%Share	YTD %Chg
			%Chg					
Brownsville	500	2.2	33.7		3,993	5,654	3.0	41.6
Eagle Pass	2,046	8.9	14.9		14,062	16,563	8.7	17.8
El Paso	5,559	24.2	14.0		40,016	43,454	22.9	8.6
Laredo	14,859	64.7	2.9		128,165	124,299	65.4	-3.0
Total	22,964	100.0	6.9		186,236	189,970	100.0	2.0

Source: Railroad companies in cited cities & U.S. Customs Office of Public Affairs, El Paso

Rail Cars into Texas All Cited Cities
Sept. 2004 vs. Sept. 2005: Up 6.9%
(In Thousands)



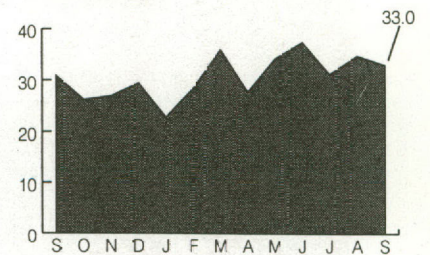
Revenues Collected by U.S. Customs District of Laredo (in U.S.\$)

City	Sep 05	%Share	04 vs. 05		YTD 04	YTD 05	%Share	YTD %Chg
			%Chg					
Brownsville	2,315,707	7.0	-9.6		20,331,780	21,238,113	7.4	4.5
Del Rio	101,216	0.3	-7.4		892,423	1,064,152	0.4	19.2
Eagle Pass	1,067,984	3.2	-7.6		7,597,895	11,526,968	4.0	51.7
McAllen-Hidalgo	4,395,858	13.3	5.5		34,938,199	37,286,080	13.1	6.7
Laredo	25,092,329	76.0	10.6		196,310,022	213,564,294	74.8	8.8
Progreso	18,825	0.1	-32.6		250,660	236,721	0.1	-5.6
Rio Grande	15,468	0.0	-56.6		244,577	202,715	0.1	-17.1
Roma	21,132	0.1	-34.7		329,431	216,301	0.1	-34.3
Total	33,028,519	100.0	7.3		260,894,986	285,335,343	100.0	9.4

Source: South Texas Customs Management Center, Laredo

Note: Totals may not add up due to rounding.

Customs Revenues for the District of Laredo
Sept. 2004 vs. Sept. 2005: Up 7.3%
(In Millions of U.S \$)



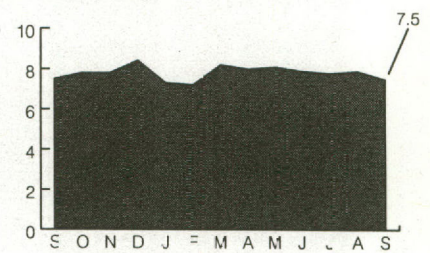
Revenues Collected by U.S. Bridge Operators (in U.S.\$)

City	Sep 05	%Share	04 vs. 05		YTD 04	YTD 05	%Share	YTD %Chg
			%Chg					
Brownsville	1,122,180	15.0	-0.3		10,517,197	10,553,083	15.1	0.3
Del Rio	270,252	3.6	-25.4		3,046,649	2,565,313	3.7	-15.8
Eagle Pass	535,644	7.2	5.0		5,159,276	5,193,957	7.4	0.7
El Paso	1,147,555	15.4	4.4		9,958,756	10,334,180	14.8	3.8
Harlingen	166,536	2.2	4.2		1,467,390	1,551,008	2.2	5.7
Laredo	2,636,191	35.3	-2.3		24,619,408	24,501,116	35.1	-0.5
McAllen-Hidalgo	890,468	11.9	11.3		7,550,479	8,357,759	12.0	10.7
Pharr	519,637	7.0	-12.0		5,348,654	5,031,535	7.2	-5.9
Roma	177,959	2.4	0.1		1,735,702	1,681,374	2.4	-3.1
Total	7,466,422	100.0	-0.8		69,403,512	69,769,325	100.0	0.5

Source: U.S. bridge operators in cited cities

Note: El Paso figures do not include Bridge of the Americas (Toll-free). Totals may not add up due to rounding.

Bridge Revenues All Cited Cities
Sept. 2004 vs. Sept. 2005: Down 0.3%
(In Millions of U.S.\$)

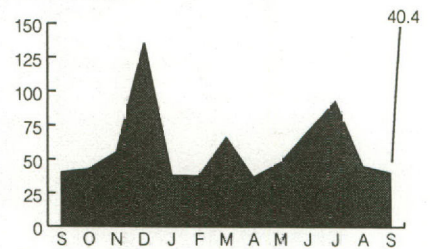


Tourist Visas Issued for Entry into Mexico

City	Sep 05	%Share	04 vs. 05		YTD 04	YTD 05	%Share	YTD %Chg
			%Chg					
Del Rio	368	0.9	-16.4		7,282	5,568	1.2	-23.5
El Paso	7,814	19.3	1.3		89,475	92,021	19.4	2.8
McAllen-Hidalgo	8,785	21.7	2.4		108,001	101,451	21.4	-6.1
Brownsville	5,036	12.5	4.5		58,613	60,998	12.8	4.1
Laredo	16,193	40.0	-1.6		205,543	190,969	40.2	-7.1
Eagle Pass	2,240	5.5	-6.1		24,630	24,154	5.1	-1.9
Total	40,436	100.0	0.1		493,544	475,161	100.0	-3.7

Source: Instituto Nacional de Migracion, Mexico

Tourist Visas Issued All Cited Cities
Sept. 2004 vs. Sept. 2005: Up 0.1%
(In Thousands)



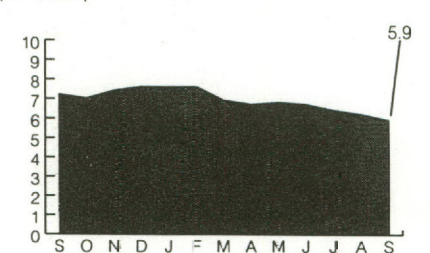
Employment & Unemployment Rates (Texas Border)

City	Employed		%Unemp	Emp Avg		04 vs. 05		Gain/Loss YTD
	Sep 05	Sep 05		Sep 05	YTD 04	YTD 05	Emp %Chg	
Brownsville	56,242	4,016	6.7	48,038	56,028	16.6	7,990	
Del Rio	14,561	849	5.5	15,408	14,468	-6.1	-939	
El Paso	242,470	16,131	6.2	246,901	243,293	-1.5	-3,608	
Harlingen	23,888	1,448	5.7	27,584	23,797	-13.7	-3,787	
Laredo	76,739	4,140	5.1	76,206	75,573	-0.8	-633	
McAllen	53,827	2,742	4.8	53,649	53,166	-0.9	-483	
Pharr	20,496	1,190	5.5	15,998	20,244	26.5	4,246	
Total	488,223	30,516	5.9	483,783	486,569	0.6	2,786	
Texas Unemployment Rate			5.3					
U.S. Unemployment Rate			4.8					

Source: Texas Workforce Commission

Note: Figures are preliminary and subject to revision. Totals may not add up due to rounding.

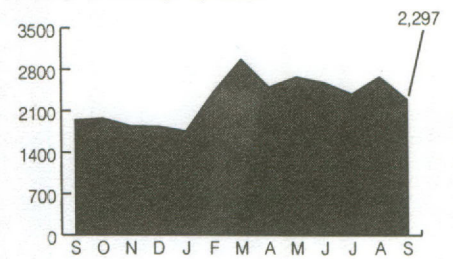
Percent of Unemployment All Cited Cities Combined
Sept. 2004 vs. Sept. 2005: Down 20.0%
(In Percent)



Building Permits

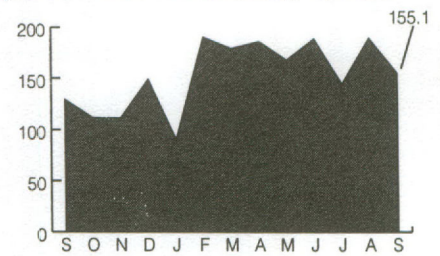
Number City	04 vs. 05		YTD 04	YTD 05	YTD		
	Sep 05	%Share			%Chg	%Share	%Chg
Brownsville	246	10.7	-17.2	3,073	2,772	12.4	-9.8
Del Rio	190	8.3	603.7	837	1,524	6.8	82.1
Eagle Pass	33	1.4	-28.3	451	448	2.0	-0.7
El Paso	957	41.7	19.0	8,566	9,962	44.7	16.3
Harlingen	304	13.2	12.2	921	2,520	11.3	173.6
Laredo	360	15.7	4.7	3,042	3,365	15.1	10.6
McAllen	207	9.0	36.2	2,145	1,677	7.5	-21.8
Total	2,297	100.0	18.3	19,035	22,268	100.0	17.0

Building Permits All Cited Cities
Sept. 2004 vs. Sept. 2005
(Number of Permits): Up 18.3%



Dollar Value City	04 vs. 05		YTD 04	YTD 05	YTD		
	Sep 05	%Share			%Chg	%Share	%Chg
Brownsville	28,425,483	18.3	50.5	202,336,195	214,591,815	14.4	6.1
Del Rio	1,634,647	1.1	207.7	19,750,277	21,859,999	1.5	10.7
Eagle Pass	2,150,754	1.4	99.1	36,060,962	39,943,076	2.7	10.8
El Paso	47,188,922	30.4	101.1	434,077,953	655,382,366	44.0	51.0
Harlingen	10,477,733	6.8	0.4	104,277,117	59,382,508	4.0	-43.1
Laredo	47,736,182	30.8	-20.7	309,859,856	345,926,757	23.3	11.6
McAllen	17,526,658	11.3	24.1	178,083,176	150,769,899	10.1	-15.3
Total	155,140,379	100.0	20.6	1,284,445,536	1,487,856,420	100.0	15.8

(Value of Permits In Millions of U.S.\$): Up 20.6%



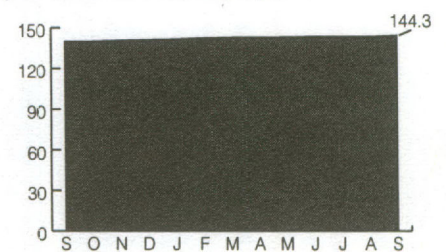
Source: Permit Departments in cited cities

Note: Dollar value totals may not add up due to rounding.

Power Connections (in Service)

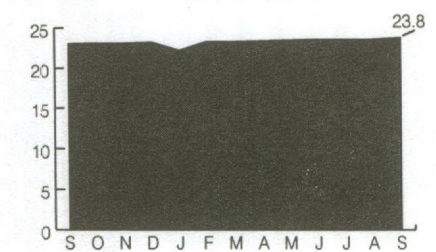
Residential City	04 vs. 05		Average YTD 04	Average YTD 05	YTD		
	Sep 05	%Share			%Chg	%Share	%Chg
Brownsville	N/A	N/A	N/A	N/A	N/A	N/A	N/A
Del Rio	14,717	10.2	0.9	14,597	14,680	10.3	0.6
Eagle Pass	10,810	7.5	3.1	10,459	10,734	7.5	2.6
El Paso	N/A	N/A	N/A	N/A	N/A	N/A	N/A
Harlingen	23,069	16.0	1.8	22,755	23,077	16.1	1.4
Laredo	58,573	40.6	3.8	56,224	57,869	40.5	2.9
McAllen	37,109	25.7	3.7	35,804	36,640	25.6	2.3
Total	144,278	100.0	3.1	139,839	143,001	100.0	2.3

Power Connections All Cited Cities
Sept. 2004 vs. Sept. 2005
(Residential - In Thousands): Up 3.1%



Commercial City	04 vs. 05		Average YTD 04	Average YTD 05	YTD		
	Sep 05	%Share			%Chg	%Share	%Chg
Brownsville	N/A	N/A	N/A	N/A	N/A	N/A	N/A
Del Rio	2,327	9.8	1.6	2,290	2,306	9.9	0.7
El Paso	N/A	N/A	N/A	N/A	N/A	N/A	N/A
Eagle Pass	1,698	7.1	4.2	1,609	1,686	7.2	4.8
Harlingen	4,029	17.0	2.6	3,917	3,887	16.6	-0.8
Laredo	8,996	37.9	3.3	8,707	8,891	38.1	2.1
McAllen	6,702	28.2	3.7	6,409	6,594	28.2	2.9
Total	23,752	100.0	3.2	22,932	23,364	100.0	1.9

(Commercial - In Thousands): Up 3.2%



Industrial City	04 vs. 05		Average YTD 04	Average YTD 05	YTD		
	Sep 05	%Share			%Chg	%Share	%Chg
Brownsville	N/A	N/A	N/A	N/A	N/A	N/A	N/A
Del Rio	44	8.8	0.0	43	44	8.9	3.1
Eagle Pass	31	6.2	3.3	29	31	6.1	3.8
El Paso	N/A	N/A	N/A	N/A	N/A	N/A	N/A
Harlingen	102	20.3	1.0	102	102	20.4	0.5
Laredo	203	40.4	-1.9	209	203	40.6	-2.7
McAllen	122	24.3	-0.8	123	120	24.0	-1.9
Total	502	100.0	-0.6	506	501	100.0	-1.0

(Industrial): Down 0.6%



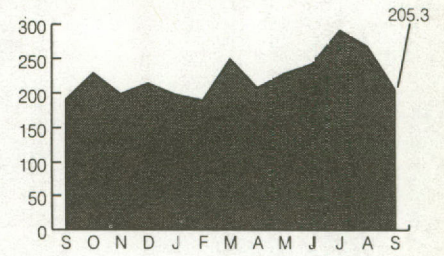
Source: American Electric Power Company, Brownsville Public Utilities Board & El Paso Electric Company

Note: Totals may not add up due to rounding.

Air Passenger Service Activity (Number of Passengers)

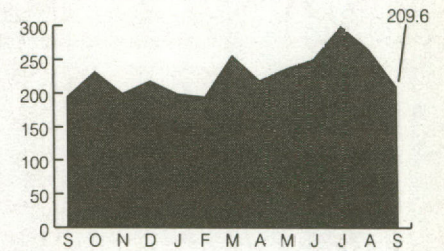
City	04 vs. 05			YTD			
	Sep 05	%Share	%Chg	YTD 04	YTD 05	%Share	%Chg
Brownsville	4,881	2.4	-5.5	49,253	116,795	5.6	137.1
El Paso	130,107	63.4	4.6	1,206,563	1,247,813	59.9	3.4
Harlingen	35,523	17.3	11.4	326,696	378,451	18.2	15.8
Laredo	7,193	3.5	10.5	58,658	71,250	3.4	21.5
McAllen	27,590	13.4	19.6	232,934	269,305	12.9	15.6
Total	205,294	100.0	7.5	1,874,104	2,083,614	100.0	11.2

Air Passenger Activity All Cited Cities
Sept. 2004 vs. Sept. 2005
(Arrivals – In Thousands): Up 7.5%



City	04 vs. 05			YTD			
	Sep 05	%Share	%Chg	YTD 04	YTD 05	%Share	%Chg
Brownsville	5,094	2.4	-1.3	50,734	121,800	5.7	140.1
El Paso	134,544	64.2	7.4	1,223,394	1,265,913	59.7	3.5
Harlingen	34,469	16.4	2.9	338,867	387,483	18.3	14.3
Laredo	6,696	3.2	-0.8	58,278	68,980	3.3	18.4
McAllen	28,753	13.7	22.6	236,450	275,536	13.0	16.5
Total	209,556	100.0	8.0	1,907,723	2,119,712	100.0	11.1

(Departures – In Thousands): Up 0.8%

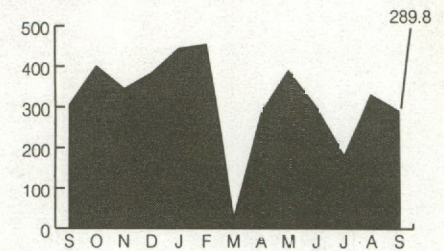


Source: Airports in cited cities

Port of Brownsville (Total Cargo in Metric Tons)

Cargo Type	04 vs. 05			YTD			
	Sep 05	%Share	%Chg	YTD 04	YTD 05	%Share	%Chg
Break Bulk	171,116	59.0	8.0	1,324,159	1,260,302	43.7	-4.8
Containers	N/A	N/A	0.0	N/A	N/A	0.0	0.0
Grain Bulk	1,333	0.5	0.0	39,569	21,803	0.8	-44.9
Liquid	12,329	4.3	3903.0	18,074	180,802	6.3	900.3
Machinery	1,475	0.5	-88.1	175,000	67,293	2.3	-61.5
Ores - Minerals	N/A	N/A	0.0	N/A	80,587	2.8	0.0
Other	N/A	N/A	0.0	N/A	205,601	7.1	0.0
Petroleum	103,542	35.7	-21.7	1,055,020	968,355	33.6	-8.2
Steel - Other Minerals	0	0	0.0	0	98,448	3.4	0.0
Total	289,795	96.5	3,801.2	2,611,822	2,883,192	100.0	10.4

Port of Brownsville Total Cargo
Sept. 2004 vs. Sept. 2005: Up 3,801.2%
(In Thousands of Metric Tons)



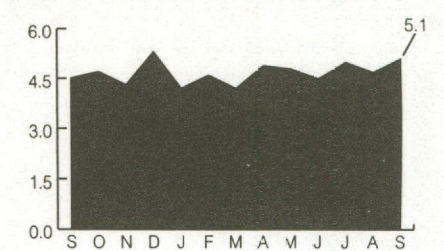
Source: Port of Brownsville

Note: Totals may not add up due to rounding.

Port of Corpus Christi (Cargo in U.S. Tons)

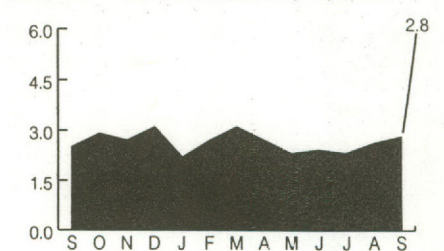
Cargo Type	04 vs. 05			YTD			
	Sep 05	%Share	%Chg	YTD 04	YTD 05	%Share	%Chg
Break Bulk	8,403	0.2	-86.8	246,585	225,069	0.5	-8.7
Chemical	13,789	0.3	-8.7	87,796	111,928	0.3	27.5
Containers	0	0.0	0.0	0	0	0.0	0.0
Dry Bulk	564,684	11.2	259.7	3,135,293	4,124,252	9.9	31.5
Grain Bulk	0	0.0	-100.0	10,818	7,882	0.0	-27.1
Liquid	44,007	0.9	24.7	201,090	251,059	0.6	24.8
Petroleum	4,423,446	87.5	4.9	36,864,853	37,149,106	88.7	0.8
Total	5,054,330	100.0	12.6	40,546,436	41,869,296	100.0	3.3

Port of Corpus Christi Cargo
Sept. 2004 vs. Sept. 2005
(Inbound – In Millions of U.S. Tons): Up 12.6%



Cargo Type	04 vs. 05			YTD			
	Sep 05	%Share	%Chg	YTD 04	YTD 05	%Share	%Chg
Break Bulk	1,513	0.1	-98.7	242,729	91,511	0.4	-62.3
Chemical	115,895	4.2	-34.7	1,563,893	1,230,783	5.4	-21.3
Containers	0	0.0	0.0	0	0	0.0	0.0
Dry Bulk	259,981	9.4	211.5	2,028,010	2,597,377	11.3	28.1
Grain Bulk	367,336	13.3	116.8	1,525,364	1,585,717	6.9	4.0
Liquid	15,743	0.6	0.0	97,877	159,056	0.7	62.5
Petroleum	2,005,573	72.5	1.2	17,386,419	17,296,529	75.3	-0.5
Total	2,766,041	100.0	9.5	22,844,291	22,960,973	100.0	0.5

(Outbound – In Millions of U.S. Tons): Up 9.5%



Source: Port of Corpus Christi

Note: Totals may not add up due to rounding.

Table 1
U.S.-Mexico Total Trade Dollar Value via Top 5 U.S.-Mexico Border Ports of Entry
Merchandise Composition by 1-Digit SITC Code
September 2004 Year-to-Date vs. September 2005 Year-to-Date
(Continued)

Hidalgo, Texas		Total Trade \$ Value YTD		% Change YTD	% Share YTD	
SITC	Description	Sep 2004	Sep 2005	2004 vs. 2005	Sep 2004	Sep 2005
0	Food and Live Animals	610,643,543	784,704,473	28.5	5.1	5.8
1	Beverages and Tobacco	11,584,718	8,041,819	-30.6	0.1	0.1
2	Crude Materials, Inedible, Except Fuels	89,642,947	114,830,832	28.1	0.8	0.8
3	Mineral Fuels, Lubricants and Related Materials	139,823,849	186,415,375	33.3	1.2	1.4
4	Animal and Vegetable Oils, Fats and Waxes	540,552	1,025,054	89.6	0.0	0.0
5	Chemicals and Related Products, N.E.S.	237,333,229	278,132,825	17.2	2.0	2.0
6	Manufactured Goods Classified Chiefly by Material	862,935,950	1,006,123,246	16.6	7.3	7.4
7	Machinery and Transport Equipment	7,795,198,341	8,988,109,491	15.3	65.6	66.1
8	Miscellaneous Manufactured Articles	1,772,898,149	1,770,651,168	-0.1	14.9	13.0
9	Commodities and Transactions not Classified Elsewhere in the SITC	365,899,156	450,329,503	23.1	3.1	3.3
Total		11,886,500,434	13,588,363,786	14.3	100.0	100.0

Nogales, Arizona		Total Trade \$ Value YTD		% Change YTD	% Share YTD	
SITC	Description	Sep 2004	Sep 2005	2004 vs. 2005	Sep 2004	Sep 2005
0	Food and Live Animals	1,743,619,966	1,773,866,946	1.7	19.6	18.2
1	Beverages and Tobacco	77,649,532	61,108,279	-21.3	0.9	0.6
2	Crude Materials, Inedible, Except Fuels	120,028,838	102,392,041	-14.7	1.4	1.1
3	Mineral Fuels, Lubricants and Related Materials	41,174,046	0	-100.0	0.5	0.0
4	Animal and Vegetable Oils, Fats and Waxes	13,113,507	19,818,859	51.1	0.1	0.2
5	Chemicals and Related Products, N.E.S.	158,557,212	204,045,077	28.7	1.8	2.1
6	Manufactured Goods Classified Chiefly by Material	884,738,719	1,082,176,110	22.3	10.0	11.1
7	Machinery and Transport Equipment	4,650,786,280	5,322,313,340	14.4	52.4	54.6
8	Miscellaneous Manufactured Articles	884,648,674	901,554,901	1.9	10.0	9.2
9	Commodities and Transactions not Classified Elsewhere in the SITC	301,638,073	281,164,935	-6.8	3.4	2.9
Total		8,875,954,847	9,748,440,488	9.8	100.0	100.0

Source: U.S. Department of Commerce data compiled by the Texas Center at Texas A&M International University, Laredo, Texas.

Subscribe now to *Border Business Indicators!* Annual subscription rate is \$36.00 (12 monthly issues). Enclose this subscription form or photocopy with payment. Payable in U.S. funds only.

Type of Subscription: New Renewal

Name _____

Title _____

Check Method of Payment: Check Money Order

Affiliation/Co. _____

Address _____

Payable to: Texas A&M International University

City _____

Send subscription to: Texas A&M International University
 Border Business Indicators
 Texas Center
 5201 University Boulevard
 Laredo, TX 78041-1900

State _____ Zip _____ Country _____

Telephone () _____

E-mail Address _____



Texas A&M International University
 Texas Center for Border Economic and Enterprise Development
 5201 University Boulevard
 Laredo, TX 78041-1900

Non-Profit Org.
 U.S. Postage Paid
 Laredo, Texas
 78041
 Permit 231