

Z
L250.8

B644B I

31:01

Border Business Indicators

Government Publications
Texas State Documents

JUL 1 2008

Depository
Dallas Public Library

100

Texas Center for Border Economic and Enterprise Development

Vol. 31 No. 1 • January 2007

Merchandise Composition: Flows at the U.S.-Mexico Border

Table 1 below exhibits the dollar values and product descriptions of merchandise that flowed between the U.S. and Mexico between their border ports of entry from January to November

2006. The total trade (U.S. export to Mexico plus U.S. imports from Mexico) for each state was aggregated from the respective dollar values of their border ports of entry. —B. Garcia

Table 1
Merchandise Composition of Trade at the U.S.-Mexico Border (Top 15 Products - SITC-3Digit)
Aggregated by State's Border Ports of Entry (Dollar Value of Total Trade)
January - November 2006

State	Rank	Code	SITC-3 Digit Product Description	U.S.\$ Value
Texas	1	784	Parts and Accessories for Tractors, Motor Cars and other Motor Vehicles, Trucks, Public-Transport Vehicles and Road Motor Vehicles N.E.S.	13,053,094,913
	2	781	Motor Cars and other Motor Vehicles Principally Designed for the Transport of Persons (not Public Transport), including Station Wagons and Racing Cars	9,794,898,323
	3	764	Telecommunications Equipment, N.E.S.; and Parts, N.E.S., and Accessories of Apparatus Falling within Telecommunications, etc.	7,867,584,840
	4	782	Motor Vehicles for the Transport of Goods and Special Purpose Motor Vehicles	7,124,485,560
	5	772	Electrical Apparatus for Switching or Protecting Electrical Circuits or for Making Connections to or in Electrical Circuits (excluding Telephone etc.)	6,926,609,529
	6	773	Equipment for Distributing Electricity, N.E.S.	6,742,724,550
	7	778	Electrical Machinery and Apparatus, N.E.S.	6,477,758,062
	8	713	Internal Combustion Piston Engines and Parts thereof, N.E.S.	5,887,939,969
	9	752	Automatic Data Processing Machines and Units thereof; Magnetic or Optical Readers; Machines Transcribing Coded Media and Processing such Data, N.E.S.	5,765,588,544
	10	761	TV Receivers (including Video Monitors & Projectors) Wheth R Nt Incorp Radiobroadcast Receivers or Sound or Video Recording or Reproducing Apparatus	4,734,359,545
	11	821	Furniture and Parts thereof; Bedding, Mattresses, Mattress Supports, Cushions and Similar Stuffed Furnishings	4,005,263,828
	12	759	Parts and Accessories Suitable for Use Solely or Principally with office Machines or Automatic Data Processing Machines	3,814,519,103
	13	699	Manufactures of Base Metal, N.E.S.	3,438,803,638
	14	775	Household Type Electrical and Nonelectrical Equipment, N.E.S.	3,127,535,938
	15	716	Rotating Electric Plant and Parts thereof, N.E.S.	3,040,346,339
California	1	761	TV Receivers (including Video Monitors & Projectors) Wheth R Nt Incorp Radiobroadcast Receivers or Sound or Video Recording or Reproducing Apparatus	8,230,097,608
	2	776	Thermionic, Cold Cathode or Photocathode Valves and Tubes; Diodes, Transistors and Similar Semiconductor Devices; Integrated Circuits, etc.; Parts	1,787,754,919
	3	764	Telecommunications Equipment, N.E.S.; and Parts, N.E.S., and Accessories of Apparatus Falling within Telecommunications, etc.	1,667,982,748
	4	772	Electrical Apparatus for Switching or Protecting Electrical Circuits or for Making Connections to or in Electrical Circuits (excluding Telephone etc.)	1,525,156,311
	5	699	Manufactures of Base Metal, N.E.S.	1,497,895,292
	6	872	Instruments and Appliances, N.E.S., for Medical, Surgical, Dental or Veterinary Purposes	1,218,877,672
	7	784	Parts and Accessories for Tractors, Motor Cars and other Motor Vehicles, Trucks, Public-Transport Vehicles and Road Motor Vehicles N.E.S.	1,172,731,673
	8	931	Special Transactions and Commodities not classified according to Kind	1,025,530,062
	9	893	Articles, N.E.S. of Plastics	978,350,806
	10	782	Motor Vehicles for the Transport of Goods and Special Purpose Motor Vehicles	952,878,043
	11	743	Pumps (not for Liquids), Air or Gas Compressors and Fans; Ventilating Hoods Incorporating a Fan; Centrifuges; Filtering etc. Apparatus; Parts thereof	843,780,326
	12	781	Motor Cars and other Motor Vehicles Principally Designed for the Transport of Persons (not Public Transport), including Station Wagons and Racing Cars	714,707,512
	13	821	Furniture and Parts thereof; Bedding, Mattresses, Mattress Supports, Cushions and Similar Stuffed Furnishings	693,603,036
	14	778	Electrical Machinery and Apparatus, N.E.S.	687,018,483
	15	054	Vegetables, Fresh, Chilled, Frozen or Simply Preserved; Roots, Tubers and other Edible Vegetable Products, N.E.S., Fresh or Dried	681,765,774
Arizona	1	781	Motor Cars and other Motor Vehicles Principally Designed for the Transport of Persons (not Public Transport), including Station Wagons and Racing Cars	3,786,650,066
	2	054	Vegetables, Fresh, Chilled, Frozen or Simply Preserved; Roots, Tubers & other Edible Vegetable Products, N.E.S., Fresh or Dried	1,396,248,554
	3	784	Parts and Accessories for Tractors, Motor Cars and other Motor Vehicles, Trucks, Public-Transport Vehicles and Road Motor Vehicles N.E.S.	1,170,526,748
	4	772	Electrical Apparatus for Switching or Protecting Electrical Circuits or for Making Connections to or in Electrical Circuits (excluding Telephone etc.)	1,156,517,703
	5	773	Equipment for Distributing Electricity, N.E.S.	1,155,478,726

Continued on Back Page

Need More Detailed Information?

For more detailed information regarding border crossings, economic indicators and trade activity, visit the Center's web site:

<http://texascenter.tamui.edu>

Technical Reports

The Texas Center's research activities have resulted in a series of technical reports on border economic issues ranging from infrastructure needs and environmental issues to the impact of NAFTA on Texas-Mexico trade relations and future business opportunities.

The Center continues its research tradition with activities spanning those areas involving border trade, business development and economic issues.

New research encompassing areas such as community development, health, culture, education and socioeconomic issues have been added to the series.

Technical Reports are freely available online for download in PDF format, unless otherwise noted.

The *Border Business Indicators* (ISSN 1091-9104) is published by the Texas Center for Border Economic and Enterprise Development, at Texas A&M International University in Laredo, Texas.

Dr. Ray M. Keck, III
President, Texas A&M International University

Dr. J. Michael Patrick
Director, Texas Center

Baldomero G. Garcia
Program Manager, Texas Center

Jacqueline O. Benavides
Data & Information Specialist, Texas Center

Leo Lozano
Database Specialist, Texas Center

Paijit Wongprauk
Student Research Assistant, Texas Center

Further information may be obtained by calling:
TEL. (956) 326-2546
FAX (956) 326-2544

or by writing to the addresses below:

E-mail: texascenter@tamui.edu
Texas A&M International University
Texas Center
5201 University Boulevard
Laredo, TX 78041-1900

Produced by the TAMUI Print Shop
on Recycled Paper



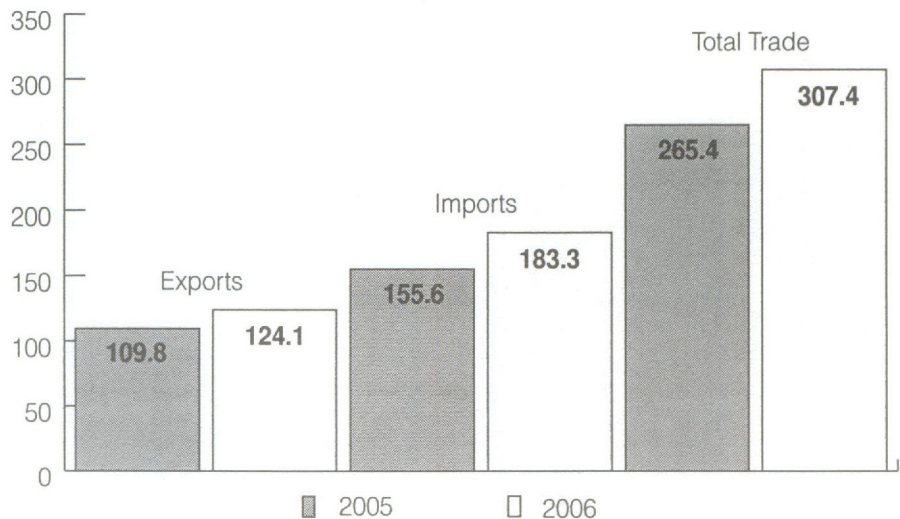
Note from the Director

Indicators of border business activity for November 2006 year-to-date (YTD) demonstrated fifteen indicators increased and seven decreased. 2006 YTD comparisons to 2005 reported for the border are listed below:

- Pedestrian bridge crossings into Mexico were up 1.7 percent.
- Pedestrian bridge crossings into Texas were up 4.1 percent.
- Vehicle bridge crossings into Mexico fell 2.5 percent.
- Vehicle bridge crossings into Texas fell 2.4 percent.
- Truck bridge crossings into Mexico gained 7.6 percent.
- Truck bridge crossings into Texas gained 3.6 percent.
- Rail car bridge crossings into Mexico went up 1.7 percent.
- Rail car bridge crossings into Texas went up 20.2 percent.
- Revenues collected by U.S. Customs increased 1.5 percent.
- Revenues collected by U.S. bridge operators registered a gain of 7.6 percent.
- Tourist visas issued for entry into Mexico were up 3.6 percent.
- Total employment was up 3.3 percent, with 15,689 jobs gained. The average unemployment rate for the border in November 2006 was 5.7 percent.
- Total building permits issued rose 17.8 percent.
- Total building permit values increased 7.2 percent.
- Power connections in service for residential were up 2.6 percent, commercial were up 1.8 percent and industrial were down 0.5 percent.
- Air passenger arrivals were down 2.5 percent, and departures were down 2.3 percent.
- Total cargo for the Port of Brownsville decreased 15.5 percent.
- Inbound cargo for the Port of Corpus Christi went down 0.2 percent, and outbound cargo went down 1.1 percent.

U.S.-Mexico Trade at a Glance

November 2006 Year-to-Date
(In Billions of U.S.\$)



Source: U.S. Census Bureau, Foreign Trade Division, Data Dissemination Branch

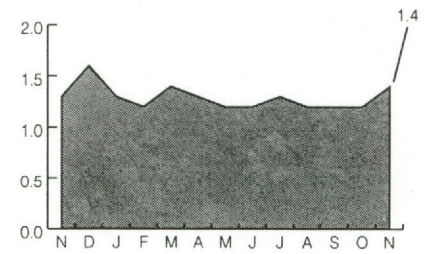
Disclaimer: Please note that the data contained in this and all issues of the *Border Business Indicators* is collected from different government agencies and private sources. Readers should note that different data-collecting agencies use dissimilar, often conflicting, techniques in collecting and compiling the information they publish. Because of this lack of uniformity, comparing different data could result in erroneous conclusions. While we are most grateful to our sources for their cooperation, we cannot assume responsibility for the comparability of the data.

Pedestrian Bridge Crossings from Texas to Mexico

City	Nov 06	%Share	05 vs. 06		YTD 05	YTD 06	%Share	YTD %Chg
			%Chg					
Brownsville	186,492	13.7	1.0		1,971,299	2,058,435	14.9	4.4
Del Rio	4,371	0.3	21.0		45,774	39,847	0.3	-12.9
Eagle Pass	48,760	3.6	-8.2		550,641	548,602	4.0	-0.4
El Paso	481,611	35.4	5.9		5,009,871	4,733,459	34.2	-5.5
Harlingen	57	0.0	-35.2		1,037	764	0.0	-26.3
Laredo	372,909	27.4	7.2		3,544,024	3,731,214	27.0	5.3
McAllen-Hidalgo	144,751	10.6	14.2		1,228,067	1,378,305	10.0	12.2
Progreso	101,084	7.4	4.6		1,104,760	1,158,479	8.4	4.9
Rio Grande	47	0.0	-48.9		1,566	730	0.0	-53.4
Roma	21,545	1.6	11.5		149,292	190,229	1.4	27.4
Total	1,361,627	100.0	5.8		13,606,331	13,840,064	100.0	1.7

Source: U.S. bridge operators in cited cities

Pedestrians into Mexico All Cited Cities
Nov. 2005 vs. Nov. 2006: Up 5.8%
(In Millions)

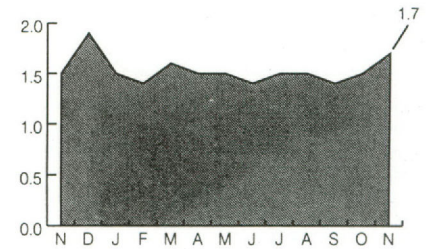


Pedestrian Bridge Crossings from Mexico to Texas

City	Nov 06	%Share	05 vs. 06		YTD 05	YTD 06	%Share	YTD %Chg
			%Chg					
Brownsville	226,979	13.7	1.7		2,380,752	2,460,806	14.9	3.4
Del Rio	5,473	0.3	-6.7		72,692	60,555	0.4	-16.7
Eagle Pass	64,136	3.9	7.8		624,380	641,174	3.9	2.7
El Paso	621,705	37.6	10.1		6,070,650	6,095,561	36.9	0.4
Laredo	421,358	25.4	7.9		3,918,166	4,130,124	25.0	5.4
McAllen-Hidalgo	184,033	11.1	15.7		1,483,993	1,717,603	10.4	15.7
Presidio	2,123	0.1	-5.9		21,701	20,569	0.1	-5.2
Progreso	102,599	6.2	6.5		1,095,875	1,156,342	7.0	5.5
Rio Grande	1,538	0.1	30.3		10,829	14,019	0.1	29.5
Roma	25,704	1.6	22.0		187,164	220,984	1.3	18.1
Total	1,655,648	100.0	8.7		15,866,202	16,517,737	100.0	4.1

Source: Oficina de Caminos y Puentes Federales, Mexico

Pedestrians into Texas All Cited Cities
Nov. 2005 vs. Nov. 2006: Up 8.7%
(In Millions)

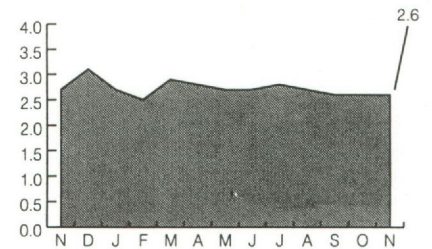


Vehicle Bridge Crossings from Texas to Mexico

City	Nov 06	%Share	05 vs. 06		YTD 05	YTD 06	%Share	YTD %Chg
			%Chg					
Brownsville	541,551	20.5	-2.1		6,123,475	6,108,914	20.7	-0.2
Del Rio	142,992	5.4	0.9		1,546,405	1,559,121	5.3	0.8
Eagle Pass	234,234	8.9	-8.7		2,867,934	2,704,470	9.2	-5.7
El Paso	400,058	15.1	0.9		4,306,731	4,332,895	14.7	0.6
Harlingen	58,172	2.2	2.2		632,680	648,848	2.2	2.6
Laredo	486,286	18.4	-4.6		5,861,675	5,426,719	18.4	-7.4
McAllen-Hidalgo	433,808	16.4	-6.5		4,943,798	4,750,282	16.1	-3.9
Pharr	134,998	5.1	20.1		1,549,078	1,608,877	5.5	3.9
Progreso	81,751	3.1	0.5		920,587	919,957	3.1	-0.1
Rio Grande	45,970	1.7	-1.3		541,346	514,748	1.7	-4.9
Roma	81,103	3.1	-0.6		930,178	894,199	3.0	-3.9
Total	2,640,923	100.0	-2.2		30,223,887	29,469,030	100.0	-2.5

Source: U.S. bridge operators in cited cities

Vehicles into Mexico All Cited Cities
Nov. 2005 vs. Nov. 2006: Down 2.2%
(In Millions)

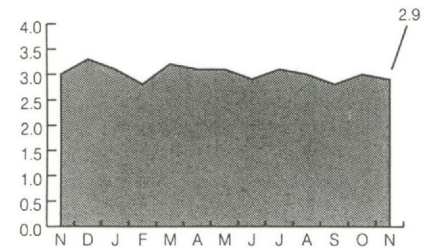


Vehicle Bridge Crossings from Mexico to Texas

City	Nov 06	%Share	05 vs. 06		YTD 05	YTD 06	%Share	YTD %Chg
			%Chg					
Brownsville	545,761	18.7	-3.9		6,158,898	6,179,131	18.7	0.3
Del Rio	152,061	5.2	1.7		1,657,866	1,687,701	5.1	1.8
Eagle Pass	244,637	8.4	-9.0		2,988,353	2,838,358	8.6	-5.0
El Paso	591,676	20.3	2.5		6,474,735	6,413,089	19.4	-1.0
Harlingen	69,595	2.4	9.9		708,374	716,570	2.2	1.2
Laredo	448,924	15.4	-13.1		5,934,737	5,483,996	16.6	-7.6
McAllen-Hidalgo	393,899	13.5	-8.0		4,698,449	4,462,148	13.5	-5.0
Pharr	195,415	6.7	12.4		2,099,680	2,177,245	6.6	3.7
Presidio	62,974	2.2	2.4		672,370	688,497	2.1	2.4
Progreso	84,430	2.9	1.8		927,298	943,478	2.9	1.7
Rio Grande	50,953	1.7	-3.6		605,609	573,444	1.7	-5.3
Roma	78,836	2.7	-1.4		935,233	888,472	2.7	-5.0
Total	2,919,161	100.0	-3.4		33,861,602	33,052,129	100.0	-2.4

Source: Oficina de Caminos y Puentes Federales, Mexico

Vehicles into Texas All Cited Cities
Nov. 2005 vs. Nov. 2006: Down 3.4%
(In Millions)

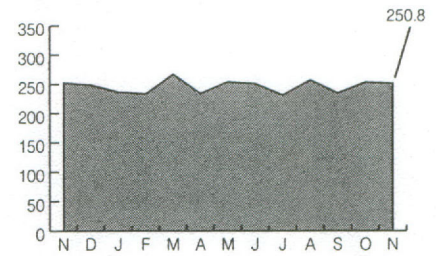


Truck Bridge Crossings from Texas to Mexico

City	Nov 06	%Share	05 vs. 06		YTD 05	YTD 06	%Share	%Chg
			%Chg					
Brownsville	17,067	6.8	-11.1		191,693	202,052	7.5	5.4
Del Rio	6,079	2.4	3.0		77,526	66,048	2.4	-14.8
Eagle Pass	8,181	3.3	1.2		88,652	90,122	3.3	1.7
El Paso	28,516	11.4	6.3		283,421	299,232	11.1	5.6
Harlingen	3,299	1.3	-20.0		40,083	35,198	1.3	-12.2
Laredo	148,600	59.2	0.1		1,388,779	1,555,230	57.6	12.0
McAllen-Hidalgo	391	0.2	-84.3		19,304	9,557	0.4	-50.5
Pharr	32,497	13.0	2.3		359,687	377,036	14.0	4.8
Progreso	2,527	1.0	9.7		21,468	26,007	1.0	21.1
Rio Grande	2,852	1.1	11.2		30,848	31,074	1.2	0.7
Roma	820	0.3	-2.0		9,055	9,761	0.4	7.8
Total	250,829	100.0	-0.7		2,510,516	2,701,317	100.0	7.6

Source: U.S. bridge operators in cited cities
 Note: Figures include loaded and empty trucks. El Paso figures do not include Bridge of the Americas.

Trucks into Mexico All Cited Cities
 Nov. 2005 vs. Nov. 2006: Down 0.7%
 (In Thousands)

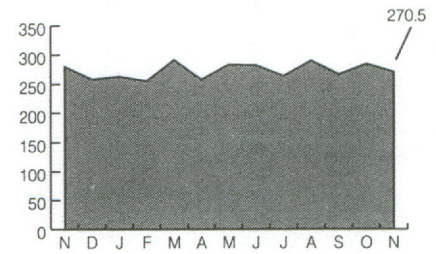


Truck Bridge Crossings from Mexico to Texas

City	Nov 06	%Share	05 vs. 06		YTD 05	YTD 06	%Share	%Chg
			%Chg					
Brownsville	15,590	5.8	-14.0		176,142	187,393	6.2	6.4
Del Rio	5,167	1.9	-9.0		59,445	60,942	2.0	2.5
Eagle Pass	8,359	3.1	4.0		90,402	90,382	3.0	0.0
El Paso	66,716	24.7	1.4		683,777	719,435	23.9	5.2
Falcon Heights	4	0.0	-20.0		71	30	0.0	-57.7
Harlingen	3,296	1.2	-1.1		40,044	39,151	1.3	-2.2
Laredo	127,339	47.1	-2.1		1,330,266	1,402,428	46.6	5.4
Pharr	36,472	13.5	-12.2		446,081	424,973	14.1	-4.7
Presidio	773	0.3	2.9		4,913	5,788	0.2	17.8
Progreso	2,932	1.1	36.4		21,395	29,104	1.0	36.0
Rio Grande	3,143	1.2	-16.7		42,671	39,651	1.3	-7.1
Roma	716	0.3	6.4		7,604	7,912	0.3	4.1
Total	270,507	100.0	-3.4		2,902,811	3,007,189	100.0	3.6

Source: South Texas Customs Management Center, Laredo & U.S. Customs Office of Public Affairs, El Paso
 Note: Figures include loaded and empty trucks.

Trucks into Texas All Cited Cities
 Nov. 2005 vs. Nov. 2006: Down 3.4%
 (In Thousands)

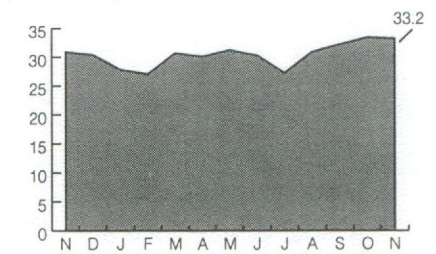


Rail Car Crossings from Texas to Mexico

City	Nov 06	%Share	05 vs. 06		YTD 05	YTD 06	%Share	%Chg
			%Chg					
Brownsville	4,113	12.4	15.9		35,072	46,921	14.0	33.8
Eagle Pass	7,403	22.3	5.8		71,216	68,663	20.6	-3.6
El Paso	N/A	N/A	N/A		N/A	N/A	N/A	N/A
Laredo	21,697	65.3	6.8		222,113	218,479	65.4	-1.6
Total	33,213	100.0	7.6		328,401	334,063	100.0	1.7

Source: Railroad companies in cited cities
 Note: Figures for El Paso are not available.

Rail Cars into Mexico All Cited Cities
 Nov. 2005 vs. Nov. 2006: Up 7.6%
 (In Thousands)

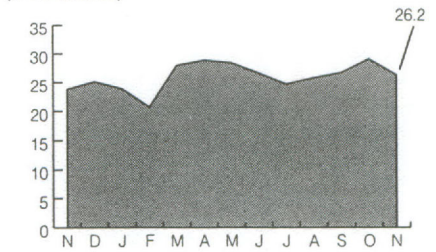


Rail Car Crossings from Mexico to Texas

City	Nov 06	%Share	05 vs. 06		YTD 05	YTD 06	%Share	%Chg
			%Chg					
Brownsville	550	2.1	73.0		6,453	5,258	1.8	-18.5
Eagle Pass	3,590	13.7	37.9		21,293	40,879	14.2	92.0
El Paso	7,847	30.0	13.1		57,770	92,545	32.1	60.2
Laredo	14,180	54.2	1.5		154,198	149,391	51.9	-3.1
Total	26,167	100.0	9.8		239,714	288,073	100.0	20.2

Source: Railroad companies in cited cities & U.S. Customs Office of Public Affairs, El Paso

Rail Cars into Texas All Cited Cities
 Nov. 2005 vs. Nov. 2006: Up 9.8%
 (In Thousands)

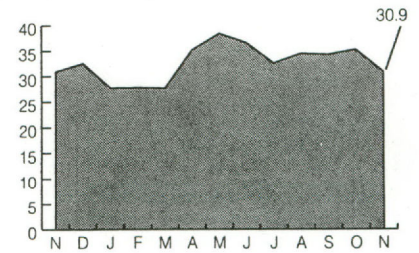


Revenues Collected by U.S. Customs District of Laredo (in U.S.\$)

City	Nov 06	%Share	05 vs. 06		YTD 05	YTD 06	%Share	YTD %Chg
			%Chg					
Brownsville	1,768,992	5.7	-24.8		26,067,115	21,566,446	6.0	-17.3
Del Rio	288,122	0.9	120.7		1,308,828	1,980,524	0.5	51.3
Eagle Pass	256,261	0.8	-72.5		13,958,164	14,332,141	4.0	2.7
McAllen-Hidalgo	5,096,533	16.5	33.0		49,316,800	45,980,641	12.7	-6.8
Laredo	23,372,844	75.7	-0.2		264,148,290	275,966,486	76.5	4.5
Progreso	35,602	0.1	-8.6		303,888	360,963	0.1	18.8
Rio Grande	44,066	0.1	182.0		235,356	300,284	0.1	27.6
Roma	5,302	0.0	-97.0		405,993	479,360	0.1	18.1
Total	30,867,723	100.0	-0.1		355,744,435	360,966,844	100.0	1.5

Source: South Texas Customs Management Center, Laredo
 Note: Totals may not add up due to rounding.

Customs Revenues for the District of Laredo
 Nov. 2005 vs. Nov. 2006: Down 0.1%
 (In Millions of U.S.\$)

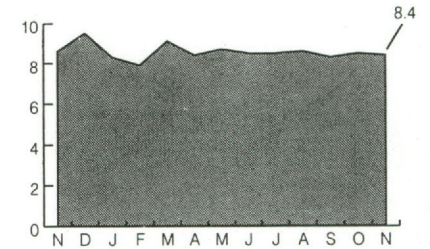


Revenues Collected by U.S. Bridge Operators (in U.S.\$)

City	Nov 06	%Share	05 vs. 06		YTD 05	YTD 06	%Share	YTD %Chg
			%Chg					
Brownsville	1,268,852	15.1	-3.2		13,126,989	14,295,033	15.4	8.9
Del Rio	291,139	3.5	1.7		3,128,568	3,146,221	3.4	0.6
Eagle Pass	622,007	7.4	10.0		6,313,643	6,121,026	6.6	-3.1
El Paso	1,227,404	14.6	3.0		12,711,312	13,045,258	14.0	2.6
Harlingen	194,108	2.3	-0.8		1,923,854	2,082,379	2.2	8.2
Laredo	3,294,600	39.2	-1.2		30,897,687	35,660,669	38.3	15.4
McAllen-Hidalgo	918,773	10.9	-6.7		10,181,865	9,975,040	10.7	-2.0
Pharr	573,425	6.8	13.2		6,047,351	6,422,560	6.9	6.2
Roma	22,926	0.3	-89.7		2,084,423	2,242,703	2.4	7.6
Total	8,413,233	100.0	-2.2		86,415,690	92,990,888	100.0	7.6

Source: U.S. bridge operators in cited cities
 Note: El Paso figures do not include Bridge of the Americas (Toll-free). Totals may not add up due to rounding.

Bridge Revenues All Cited Cities
 Nov. 2005 vs. Nov. 2006: Down 2.2%
 (In Millions of U.S.\$)

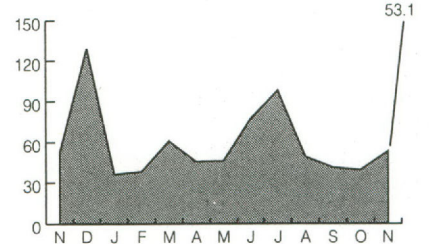


Tourist Visas Issued for Entry into Mexico

City	Nov 06	%Share	05 vs. 06		YTD 05	YTD 06	%Share	YTD %Chg
			%Chg					
Del Rio	790	1.5	-2.0		6,831	6,973	1.2	2.1
El Paso	8,718	16.4	-6.5		108,625	104,950	17.9	-3.4
McAllen-Hidalgo	10,336	19.5	-2.8		120,041	118,987	20.3	-0.9
Brownsville	6,992	13.2	4.9		72,369	73,856	12.6	2.1
Laredo	23,623	44.5	9.8		227,348	250,947	42.9	10.4
Eagle Pass	2,674	5.0	-14.9		29,529	29,347	5.0	-0.6
Total	53,133	100.0	2.0		564,743	585,060	100.0	3.6

Source: Instituto Nacional de Migracion, Mexico

Tourist Visas Issued All Cited Cities
 Nov. 2005 vs. Nov. 2006: Up 2.0%
 (In Thousands)

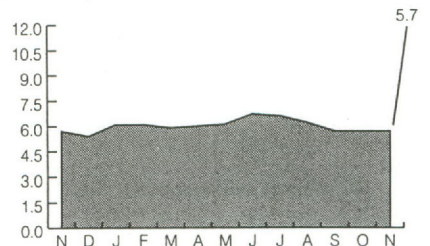


Employment & Unemployment Rates (Texas Border)

City	Employed		%Unemp	Emp Avg		05 vs. 06	Gain/Loss
	Nov 06	Nov 06		Nov 06	YTD 05		
Brownsville	57,678	3,781	6.2	54,962	56,830	3.4	1,868
Del Rio	14,979	827	5.2	14,799	14,902	0.7	103
El Paso	245,674	16,409	6.3	234,698	239,422	2.0	4,724
Harlingen	24,051	1,368	5.4	22,919	23,698	3.4	779
Laredo	84,207	3,962	4.5	76,554	81,275	6.2	4,721
McAllen	57,446	2,834	4.7	53,453	55,978	4.7	2,525
Pharr	22,030	1,247	5.4	20,499	21,467	4.7	969
Total	506,065	30,428	5.7	477,883	493,572	3.3	15,689
Texas Unemployment Rate			4.6				
U.S. Unemployment Rate			4.3				

Source: Texas Workforce Commission
 Note: Figures are preliminary and subject to revision. Totals may not add up due to rounding.

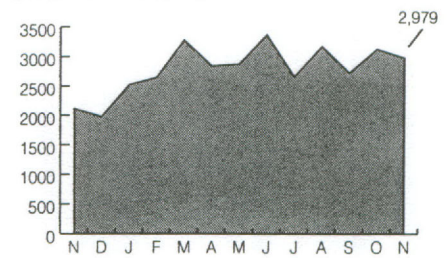
Percent of Unemployment All Cited Cities Combined
 Nov. 2005 vs. Nov. 2006: Down 3.9%
 (In Percent)



Building Permits

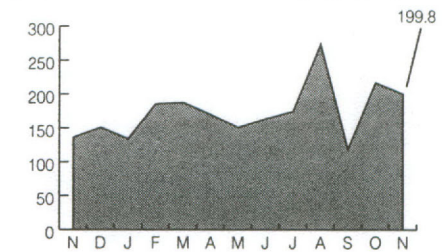
Number City	05 vs. 06			YTD			
	Nov 06	%Share	%Chg	YTD 05	YTD 06	%Share	%Chg
Brownsville	245	8.2	9.9	3,230	3,036	9.4	-6.0
Del Rio	162	5.4	-17.3	2,415	2,326	7.2	-3.7
Eagle Pass	33	1.1	-29.8	535	414	1.3	-22.6
El Paso	1,203	40.4	31.3	11,908	11,807	36.7	-0.8
Harlingen	248	8.3	6.4	3,018	3,334	10.4	10.5
Laredo	687	23.1	91.4	4,069	8,074	25.1	98.4
McAllen	401	13.5	186.4	2,118	3,171	9.9	49.7
Total	2,979	100.0	40.9	27,293	32,162	100.0	17.8

Building Permits All Cited Cities
Nov. 2005 vs. Nov. 2006
(Number of Permits): Up 40.9%



Dollar Value City	05 vs. 06			YTD			
	Nov 06	%Share	%Chg	YTD 05	YTD 06	%Share	%Chg
Brownsville	20,992,926	10.5	101.1	237,890,787	230,712,257	11.7	-3.0
Del Rio	17,663,986	8.8	874.1	26,288,953	40,053,236	2.0	52.4
Eagle Pass	1,997,290	1.0	-44.0	45,924,561	24,535,676	1.2	-46.6
El Paso	82,626,441	41.3	1.8	807,594,109	826,726,229	41.9	2.4
Harlingen	5,251,021	2.6	0.0	71,246,726	91,181,681	4.6	28.0
Laredo	43,121,118	21.6	98.2	388,041,639	420,551,356	21.3	8.4
McAllen	28,189,249	14.1	138.0	263,304,185	338,911,621	17.2	28.7
Total	199,842,031	100.0	47.1	1,840,290,961	1,972,672,056	100.0	7.2

(Value of Permits in Millions of U.S.\$): Up 47.1%

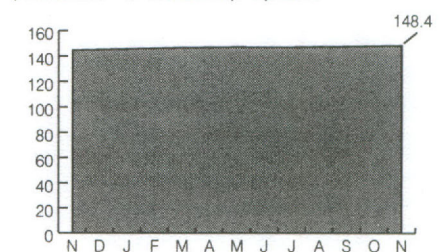


Source: Permit Departments in cited cities
Note: Dollar value totals may not add up due to rounding.

Power Connections (in Service)

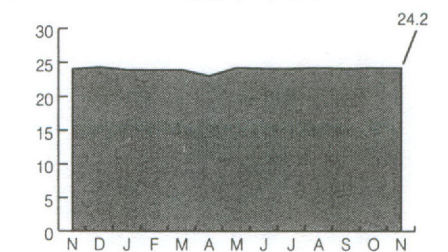
Residential City	05 vs. 06			Average		YTD	
	Nov 06	%Share	%Chg	YTD 05	YTD 06	%Share	%Chg
Brownsville	N/A	N/A	N/A	N/A	N/A	N/A	N/A
Del Rio	14,903	10.0	1.6	14,681	14,845	10.1	1.1
Eagle Pass	11,057	7.5	1.9	10,753	10,983	7.5	2.1
El Paso	N/A	N/A	N/A	N/A	N/A	N/A	N/A
Harlingen	23,743	16.0	2.6	23,084	23,564	16.0	2.1
Laredo	60,621	40.9	2.9	58,036	60,048	40.8	3.5
McAllen	38,036	25.6	2.9	36,699	37,599	25.6	2.5
Total	148,360	100.0	2.7	143,252	147,040	100.0	2.6

Power Connections All Cited Cities
Nov. 2005 vs. Nov. 2006
(Residential - In Thousands): Up 2.7%



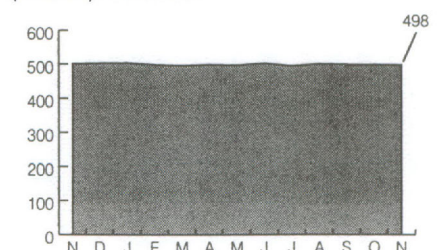
Commercial City	05 vs. 06			Average		YTD	
	Nov 06	%Share	%Chg	YTD 05	YTD 06	%Share	%Chg
Brownsville	N/A	N/A	N/A	N/A	N/A	N/A	N/A
Del Rio	2,354	9.7	0.3	2,312	2,347	9.8	1.5
Eagle Pass	1,693	7.0	-0.6	1,688	1,702	7.1	0.8
El Paso	N/A	N/A	N/A	N/A	N/A	N/A	N/A
Harlingen	4,022	16.6	-1.8	4,013	4,036	16.8	0.6
Laredo	9,274	38.4	2.7	8,912	9,106	38.0	2.2
McAllen	6,828	28.2	0.4	6,622	6,787	28.3	2.5
Total	24,171	100.0	0.8	23,547	23,977	100.0	1.8

(Commercial - In Thousands): Up 0.8%



Industrial City	05 vs. 06			Average		YTD	
	Nov 06	%Share	%Chg	YTD 05	YTD 06	%Share	%Chg
Brownsville	N/A	N/A	N/A	N/A	N/A	N/A	N/A
Del Rio	44	8.8	0.0	44	44	8.8	-1.2
Eagle Pass	29	5.8	-6.5	31	29	5.7	-6.5
El Paso	N/A	N/A	N/A	N/A	N/A	N/A	N/A
Harlingen	105	21.1	-1.9	103	103	20.7	0.8
Laredo	202	40.6	1.0	203	202	40.4	-0.8
McAllen	118	23.7	-0.8	121	122	24.4	0.8
Total	498	100.0	-0.6	502	499	100.0	-0.5

(Industrial): Down 0.6%

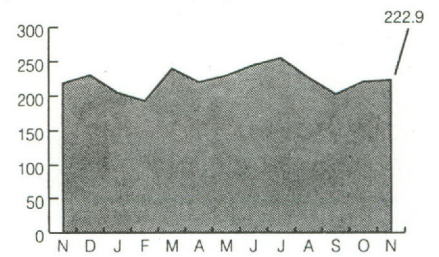


Source: American Electric Power Company, Brownsville Public Utilities Board & El Paso Electric Company
Note: Totals may not add up due to rounding.

Air Passenger Service Activity (Number of Passengers)

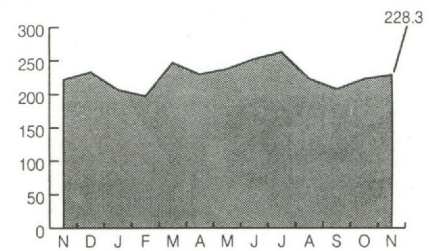
Arrivals City	05 vs. 06			YTD			
	Nov 06	%Share	%Chg	YTD 05	YTD 06	%Share	%Chg
Brownsville	7,637	3.4	14.0	130,339	82,641	3.4	-36.6
El Paso	140,051	62.8	2.1	1,525,866	1,540,372	62.7	1.0
Harlingen	33,215	14.9	-13.7	454,111	383,471	15.6	-15.6
Laredo	9,313	4.2	24.2	86,193	89,916	3.7	4.3
McAllen	32,717	14.7	14.1	325,516	361,959	14.7	11.2
Total	222,933	100.0	2.0	2,522,025	2,458,359	100.0	-2.5

Air Passenger Activity All Cited Cities
Nov. 2005 vs. Nov. 2006
(Arrivals – In Thousands): Up 2.0%



Departures City	05 vs. 06			YTD			
	Nov 06	%Share	%Chg	YTD 05	YTD 06	%Share	%Chg
Brownsville	7,626	3.3	12.6	135,715	84,102	3.3	-38.0
El Paso	143,102	62.7	3.4	1,549,043	1,566,055	62.3	1.1
Harlingen	34,797	15.2	-11.5	470,348	403,697	16.1	-14.2
Laredo	8,957	3.9	24.4	83,304	88,301	3.5	6.0
McAllen	33,861	14.8	13.6	334,561	370,482	14.7	10.7
Total	228,343	100.0	3.1	2,572,971	2,512,637	100.0	-2.3

(Departures – In Thousands): Up 3.1%

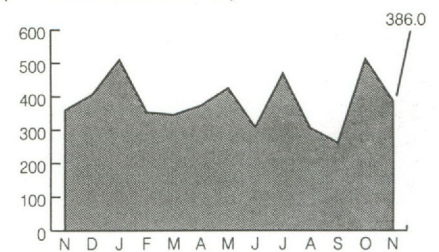


Source: Airports in cited cities

Port of Brownsville (Total Cargo in Metric Tons)

Cargo Type	05 vs. 06			YTD			
	Nov 06	%Share	%Chg	YTD 05	YTD 06	%Share	%Chg
Break Bulk	171,151	44.3	-32.1	1,713,386	2,462,029	58.0	43.7
Containers	0	0.0	0.0	0	0	0.0	0.0
Grain Bulk	0	0.0	0.0	14,403	0	0.0	-100.0
Liquid	125,034	32.4	5456.7	190,393	382,962	9.0	101.1
Machinery	1,182	0.3	-78.3	70,981	44,994	1.1	-36.6
Ores - Minerals	0	0.0	0.0	80,587	0	0.0	-100.0
Other	0	0.0	0.0	205,601	23,398	0.6	-88.6
Petroleum	88,674	23.0	-10.5	1,303,017	1,334,513	31.4	2.4
Steel - Other Minerals	0	0.0	0.0	98,448	0	0.0	-100.0
Total	386,041	100.0	7.6	3,676,815	4,247,897	100.0	15.5

Port of Brownsville Total Cargo
Nov. 2005 vs. Nov. 2006: Up 7.6%
(In Thousands of Metric Tons)



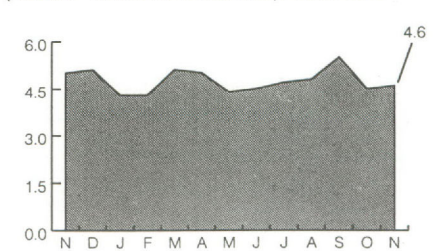
Source: Port of Brownsville

Note: Totals may not add up due to rounding.

Port of Corpus Christi (Cargo in U.S. Tons)

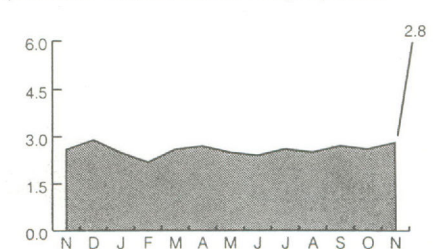
Inbound Cargo Type	05 vs. 06			YTD			
	Nov 06	%Share	%Chg	YTD 05	YTD 06	%Share	%Chg
Break Bulk	4,823	0.1	-97.9	461,701	103,994	0.2	-77.5
Chemical	4,275	0.1	-49.9	127,778	109,939	0.2	-14.0
Containers	0	0.0	0.0	0	0	0.0	0.0
Dry Bulk	498,889	10.9	1.3	5,163,041	4,862,476	9.4	-5.8
Grain Bulk	0	0.0	0.0	9,409	9,521	0.0	1.2
Liquid	0	0.0	-100.0	271,796	147,534	0.3	-45.7
Petroleum	4,088,364	88.9	-4.1	45,666,070	46,379,893	89.9	1.6
Total	4,596,350	100.0	-8.4	51,699,795	51,613,356	100.0	-0.2

Port of Corpus Christi Cargo
Nov. 2005 vs. Nov. 2006
(Inbound – In Millions of U.S. Tons): Down 8.4%



Outbound Cargo Type	05 vs. 06			YTD			
	Nov 06	%Share	%Chg	YTD 05	YTD 06	%Share	%Chg
Break Bulk	11,551	0.4	-74.5	161,524	102,071	0.4	-36.8
Chemical	125,238	4.4	-17.3	1,523,466	1,351,562	4.8	-11.3
Containers	0	0.0	0.0	0	0	0.0	0.0
Dry Bulk	196,209	6.9	1.5	3,319,846	2,247,443	8.0	-32.3
Grain Bulk	193,324	6.8	74.4	1,897,822	1,733,173	6.2	-8.7
Liquid	9,214	0.3	-12.4	179,800	48,487	0.2	-73.0
Petroleum	2,303,251	81.1	12.4	21,291,488	22,574,196	80.5	6.0
Total	2,838,787	100.0	10.9	28,373,945	28,056,931	100.0	-1.1

(Outbound – In Millions of U.S. Tons): Up 10.9%



Source: Port of Corpus Christi

Note: Totals may not add up due to rounding.

State	Rank	Code	SITC-3 Digit Product Description	U.S.\$ Value	
Arizona (Cont.)	6	764	Telecommunications Equipment, N.E.S.; and Parts, N.E.S., and Accessories of Apparatus Falling within Telecommunications, etc.	1,112,682,118	
	7	776	Thermionic, Cold Cathode or Photocathode Valves and Tubes; Diodes, Transistors and Similar Semiconductor Devices; Integrated Circuits, etc.; Parts	616,632,677	
	8	057	Fruit and Nuts (not including Oil Nuts), Fresh or Dried	597,671,336	
	9	699	Manufactures of Base Metal, N.E.S.	418,056,389	
	10	931	Special Transactions and Commodities not classified according to Kind	400,460,204	
	11	682	Copper	389,262,564	
	12	744	Mechanical Handling Equipment, and Parts thereof, N.E.S.	381,119,952	
	13	893	Articles, N.E.S. of Plastics	317,755,933	
	14	761	TV Receivers (including Video Monitors & Projectors) Wheth R Nt Incorp Radiobroadcast Receivers or Sound or Video Recording or Reproducing Apparatus	315,486,786	
	15	752	Automatic Data Processing Machines and Units thereof; Magnetic or Optical Readers; Machines Transcribing Coded Media and Processing such Data, N.E.S.	289,830,832	
	New Mexico	1	001	Live Animals other than Animals of Division 03	147,762,330
		2	781	Motor Cars and other Motor Vehicles Principally Designed for the Transport of Persons (not Public Transport), including Station Wagons and Racing Cars	128,084,990
		3	764	Telecommunications Equipment, N.E.S.; and Parts, N.E.S., and Accessories of Apparatus Falling within Telecommunications, etc.	91,641,523
		4	742	Pumps for Liquids, whether or not Fitted with a Measuring Device; Liquid Elevators; Parts for such Pumps and Liquid Elevators	80,448,981
		5	747	Taps, Cocks, Valves and Similar Appliances for Pipes, Boiler Shells, Tanks, etc. (including Pressure and Temperature Controlled Valves)	72,210,719
6		992	Export Shipments Valued not over \$10,000 (thru March 1998) and not over \$20,000 (effective April 1998), not identified by Kind	65,573,558	
7		784	Parts and Accessories for Tractors, Motor Cars and other Motor Vehicles, Trucks, Public-Transport Vehicles and Road Motor Vehicles N.E.S.	48,694,699	
8		874	Measuring, Checking, Analysing and Controlling Instruments and Apparatus, N.E.S.	47,987,916	
9		813	Lighting Fixtures and Fittings, N.E.S.	47,693,120	
10		062	Sugar Confectionery	35,086,669	
11		773	Equipment for Distributing Electricity, N.E.S.	31,261,600	
12		248	Wood, Simply Worked and Railway Sleepers of Wood	31,110,808	
13		716	Rotating Electric Plant and Parts thereof, N.E.S.	29,706,375	
14		931	Special Transactions and Commodities not classified according to Kind	26,813,492	
15		691	Metal Structures and Parts, N.E.S., of Iron, Steel or Aluminum	24,110,395	

Source: U.S. Department of Commerce data compiled by the Texas Center at Texas A&M International University, Laredo, Texas.

Subscribe now to *Border Business Indicators!* Annual subscription rate is \$36.00 (12 monthly issues). Enclose this subscription form or photocopy with payment. Payable in U.S. funds only.

Type of Subscription: New Renewal

Name _____

Title _____

Check Method of Payment: Check Money Order

Affiliation/Co. _____

Address _____

Payable to: Texas A&M International University

City _____

Send subscription to: Texas A&M International University

State _____ Zip _____ Country _____

Border Business Indicators

Telephone () _____

Texas Center

E-mail Address _____

5201 University Boulevard

Laredo, TX 78041-1900

Texas A&M International University
 Texas Center for Border Economic and Enterprise Development
 5201 University Boulevard
 Laredo, TX 78041-1900

Non-Profit Org.
 U.S. Postage Paid
 Laredo, Texas
 78041
 Permit 231