

2
 250.8
 B644BI
 30:12

Border Business Indicators

Government Publications
 Texas State Documents

JUL 1 2008

Texas Center for Border Economic and Enterprise Development

Depository
 Dallas Public Library

Vol. 30 No. 12 • December 2006

U.S.-Mexico Trade Figures' Trends Point to a Banner Year

U.S.-Mexico trade registered double-digit growth on an average of 16.6% throughout 2006 year-to-date (YTD), up from last year's average growth of 8.2%. With this continued growth, trade figures for the trading partners will surpass those of 2005 at the end of 2006.

U.S. exports to Mexico—up to October 2006—maintained a 13.5 percent increase over the same period in 2005. Similarly, U.S. imports from Mexico continued posting an increase, 18.3 percent for the same period.

In Table 1, the total dollar value of all merchandise trade (\$278.3 billion) was up 16.3 percent for October 2006 YTD against the same period in 2005 (\$239.2 billion). Although, trade between the trading partners was up, the U.S. widened its trade

deficit with Mexico. The October 2005 YTD deficit was \$41.4 billion. U.S. imports from Mexico have outpaced exports to Mexico in 2006. This has resulted in a deficit of \$53.7 billion or a 29.7 percent increase in October 2006 YTD.

Of the \$278.3 billion dollar value of this merchandise trade between the trading partners in 2006 YTD, \$219.5 billion or 78.9 percent was processed at U.S.-Mexico border ports of entry. Texas border ports of entry accounted for \$166.5 billion or 75.9 percent of that total trade merchandise value (See Table 2 and 3).

On the back page, Tables 5 and 6 delineate the 27 ports of entry on the U.S.-Mexico border, and the dollar value of U.S. exports to Mexico, and U.S. imports from Mexico passing through them respectively. —B. Garcia

Table 1
U.S.-Mexico Trade
 (In Billions of U.S. Dollars)

	2005 Oct YTD Total	2006 Oct YTD Total	'05 vs. '06 Percent Change
U.S. Exports to Mexico	98.9	112.3	13.5
U.S. Imports from Mexico	140.3	166.0	18.3
Total Trade	239.2	278.3	16.3

Table 2
U.S.-Mexico Trade Processed by U.S.-Mexico Border Ports
 (In Billions of U.S. Dollars)

	2005 Oct YTD Total	2006 Oct YTD Total	'05 vs. '06 Percent Change
U.S. Exports to Mexico	82.7	93.5	13.1
U.S. Imports from Mexico	109.3	126.0	15.3
Total Trade	192.0	219.5	14.3

Table 3
U.S.-Mexico Trade Processed by Texas Border Ports
 (In Billions of U.S. Dollars)

	2005 Oct YTD Total	2006 Oct YTD Total	'05 vs. '06 Percent Change
Texas Border Ports	148.0	166.5	12.5
Other U.S.-Mexico Border Ports	44.0	53.1	20.7
Total Trade	192.0	219.6	14.4

Note: Figures may not match due to rounding.

Table 4
Total U.S.-Mexico Trade
 Processed by U.S.-Mexico Border Ports
 (In U.S. Dollars)

Port of Entry	2005 Oct YTD Total	2006 Oct YTD Total	'05 vs. '06 Percent Change
Brownsville	9,557,315,209	10,551,730,433	10.4
Del Rio	2,570,096,512	2,626,807,781	2.2
Eagle Pass	6,175,566,192	9,458,124,112	53.2
Laredo	77,719,645,386	86,666,111,549	11.5
Hidalgo	15,246,663,072	16,916,320,908	11.0
Rio Grande	189,364,848	299,771,213	58.3
Progreso	108,661,528	179,581,462	65.3
Roma	65,163,317	112,852,024	73.2
Edinburg Airport	465,300	0	-100.0
El Paso	36,013,616,338	39,272,805,577	9.0
Presidio	313,401,885	378,174,163	20.7
Fabens	4,319,363	1,176,029	-72.8
Columbus	40,625,769	39,812,464	-2.0
Santa Teresa	958,022,643	954,889,259	-0.3
Santa Teresa Airport	7,875	14,220	80.6
Andrade	2,422,669	1,735,568	-28.4
Calexico	6,235,411	26,942,998	332.1
San Ysidro	109,413,624	120,000,294	9.7
Tecate	974,092,629	1,029,278,983	5.7
Otay Mesa Station	20,064,124,381	23,559,781,395	17.4
Calexico-East	8,912,785,890	9,824,309,334	10.2
Douglas	937,089,095	983,894,182	5.0
Lukeville	13,529,337	6,292,185	-53.5
Naco	92,718,841	117,961,540	27.2
Nogales	11,136,807,557	15,612,080,026	40.2
Sasabe	5,563,240	612,862	-89.0
San Luis	792,146,907	792,467,458	0.0
Total Trade	192,009,864,818	219,533,528,019	14.3

Continued on Back Page

Need More Detailed Information?

For more detailed information regarding border crossings, economic indicators and trade activity, visit the Center's web site:

<http://texascenter.tamui.edu>

Technical Reports

The Texas Center's research activities have resulted in a series of technical reports on border economic issues ranging from infrastructure needs and environmental issues to the impact of NAFTA on Texas-Mexico trade relations and future business opportunities.

The Center continues its research tradition with activities spanning those areas involving border trade, business development and economic issues.

New research encompassing areas such as community development, health, culture, education and socioeconomic issues have been added to the series.

Technical Reports are freely available on-line for download in PDF format, unless otherwise noted.

The *Border Business Indicators* (ISSN 1091-9104) is published by the Texas Center for Border Economic and Enterprise Development, at Texas A&M International University in Laredo, Texas.

Dr. Ray M. Keck, III
President, Texas A&M International University

Dr. J. Michael Patrick
Director, Texas Center

Baldomero G. Garcia
Program Manager, Texas Center

Jacqueline O. Benavides
Data & Information Specialist, Texas Center

Leo Lozano
Database Specialist, Texas Center

Paijit Wongprauk
Student Research Assistant, Texas Center

Further information may be obtained by calling:
TEL. (956) 326-2546
FAX (956) 326-2544

or by writing to the addresses below:

E-mail: texascenter@tamui.edu
Texas A&M International University
Texas Center
5201 University Boulevard
Laredo, TX 78041-1900

Produced by the TAMIU Print Shop
on Recycled Paper



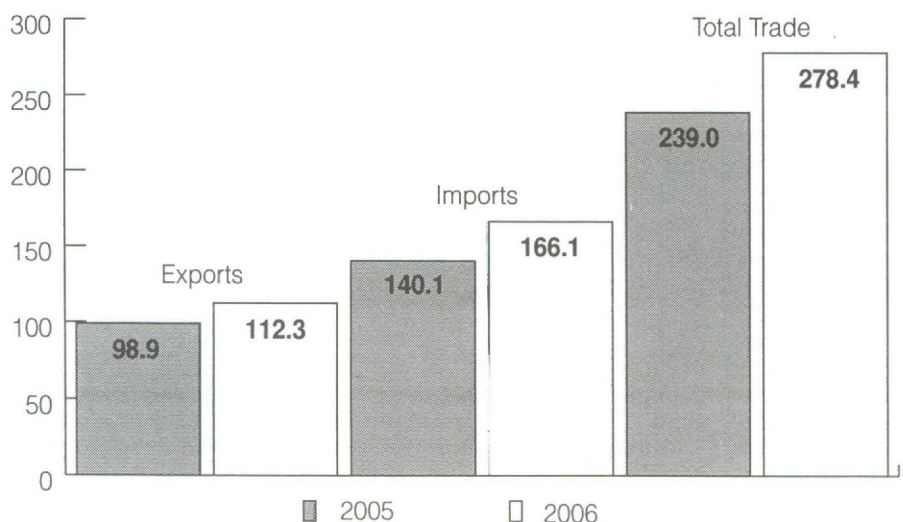
Note from the Director

Indicators of border business activity for October 2006 year-to-date (YTD) demonstrated sixteen indicators increased and six decreased. 2006 YTD comparisons to 2005 reported for the border are listed below:

- Pedestrian bridge crossings into Mexico were up 1.3 percent.
- Pedestrian bridge crossings into Texas were up 3.6 percent.
- Vehicle bridge crossings into Mexico fell 2.5 percent.
- Vehicle bridge crossings into Texas fell 2.3 percent.
- Truck bridge crossings into Mexico gained 8.5 percent.
- Truck bridge crossings into Texas gained 4.3 percent.
- Rail car bridge crossings into Mexico went up 1.1 percent.
- Rail car bridge crossings into Texas went up 21.3 percent.
- Revenues collected by U.S. Customs increased 1.6 percent.
- Revenues collected by U.S. bridge operators registered a gain 8.7 percent.
- Tourist visas issued for entry into Mexico were up 3.8 percent.
- Total employment was up 3.2 percent, with 15,221 jobs gained. The average unemployment rate for the border in October 2006 was 5.7 percent.
- Total building permits issued rose 15.9 percent.
- Total building permit values increased 4.0 percent.
- Power connections in service for residential were up 2.6 percent, commercial were up 1.9 percent and industrial were down 0.5 percent.
- Air passenger arrivals were down 3.0 percent, and departures were down 2.9 percent.
- Total cargo for the Port of Brownsville increased 16.4 percent.
- Inbound cargo for the Port of Corpus Christi went up 0.7 percent, and outbound cargo went down 2.3 percent.

U.S.-Mexico Trade at a Glance

October 2006 Year-to-Date
(In Billions of U.S.\$)



Source: U.S. Census Bureau, Foreign Trade Division, Data Dissemination Branch

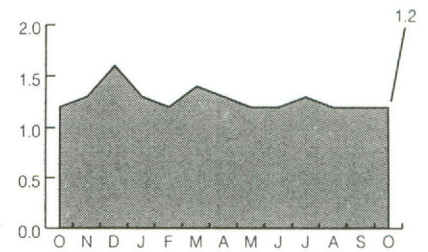
Disclaimer: Please note that the data contained in this and all issues of the *Border Business Indicators* is collected from different government agencies and private sources. Readers should note that different data-collecting agencies use dissimilar, often conflicting, techniques in collecting and compiling the information they publish. Because of this lack of uniformity, comparing different data could result in erroneous conclusions. While we are most grateful to our sources for their cooperation, we cannot assume responsibility for the comparability of the data.

Pedestrian Bridge Crossings from Texas to Mexico

City	Oct 06	%Share	05 vs. 06		YTD 05	YTD 06	%Share	YTD %Chg
			%Chg					
Brownsville	176,714	14.2	-3.8		1,786,708	1,871,943	15.0	4.8
Del Rio	3,527	0.3	-5.8		42,162	35,476	0.3	-15.9
Eagle Pass	53,654	4.3	6.5		497,528	499,842	4.0	0.5
El Paso	463,110	37.1	5.4		4,555,222	4,251,848	34.1	-6.7
Harlingen	48	0.0	-50.0		949	707	0.0	-25.5
Laredo	342,280	27.4	4.6		3,196,253	3,358,305	26.9	5.1
McAllen-Hidalgo	121,594	9.7	1.3		1,101,261	1,233,554	9.9	12.0
Progreso	68,222	5.5	-2.2		1,008,105	1,057,395	8.5	4.9
Rio Grande	60	0.0	-34.8		1,474	683	0.0	-53.7
Roma	18,098	1.5	8.1		129,964	168,684	1.4	29.8
Total	1,247,307	100.0	3.0		12,319,626	12,478,437	100.0	1.3

Source: U.S. bridge operators in cited cities

Pedestrians into Mexico All Cited Cities
Oct. 2005 vs. Oct. 2006: Up 3.0%
(In Millions)

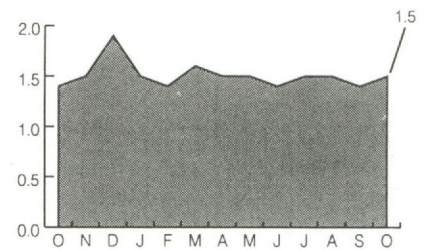


Pedestrian Bridge Crossings from Mexico to Texas

City	Oct 06	%Share	05 vs. 06		YTD 05	YTD 06	%Share	YTD %Chg
			%Chg					
Brownsville	211,517	13.9	-0.4		2,157,544	2,233,827	15.0	3.5
Del Rio	5,161	0.3	-14.0		66,829	55,082	0.4	-17.6
Eagle Pass	62,452	4.1	8.6		564,882	577,038	3.9	2.2
El Paso	615,934	40.6	10.7		5,506,149	5,473,856	36.8	-0.6
Laredo	372,924	24.6	3.0		3,527,620	3,708,766	25.0	5.1
McAllen-Hidalgo	155,531	10.3	5.4		1,324,930	1,533,570	10.3	15.7
Presidio	1,949	0.1	7.0		19,444	18,446	0.1	-5.1
Progreso	69,246	4.6	-1.0		999,566	1,053,743	7.1	5.4
Rio Grande	1,513	0.1	48.6		9,649	12,481	0.1	29.4
Roma	21,071	1.4	16.0		166,088	195,280	1.3	17.6
Total	1,517,298	100.0	5.9		14,342,701	14,862,089	100.0	3.6

Source: Oficina de Caminos y Puentes Federales, Mexico

Pedestrians into Texas All Cited Cities
Oct. 2005 vs. Oct. 2006: Up 5.9%
(In Millions)

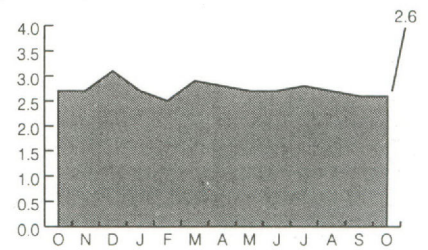


Vehicle Bridge Crossings from Texas to Mexico

City	Oct 06	%Share	05 vs. 06		YTD 05	YTD 06	%Share	YTD %Chg
			%Chg					
Brownsville	542,668	20.8	-0.2		5,570,511	5,567,363	20.8	-0.1
Del Rio	140,856	5.4	2.9		1,404,660	1,416,129	5.3	0.8
Eagle Pass	233,159	8.9	-6.9		2,611,494	2,470,236	9.2	-5.4
El Paso	387,889	14.9	-2.7		3,910,402	3,932,837	14.7	0.6
Harlingen	54,244	2.1	2.3		575,767	590,676	2.2	2.6
Laredo	477,850	18.3	-5.2		5,351,788	4,940,433	18.4	-7.7
McAllen-Hidalgo	423,645	16.3	-4.5		4,480,019	4,316,474	16.1	-3.7
Pharr	144,135	5.5	25.1		1,436,666	1,473,879	5.5	2.6
Progreso	76,132	2.9	-2.6		839,244	838,206	3.1	-0.1
Rio Grande	44,381	1.7	-4.7		494,774	468,778	1.7	-5.3
Roma	80,344	3.1	-0.7		848,559	813,096	3.0	-4.2
Total	2,605,303	100.0	-1.7		27,523,884	26,828,107	100.0	-2.5

Source: U.S. bridge operators in cited cities

Vehicles into Mexico All Cited Cities
Oct. 2005 vs. Oct. 2006: Down 1.7%
(In Millions)

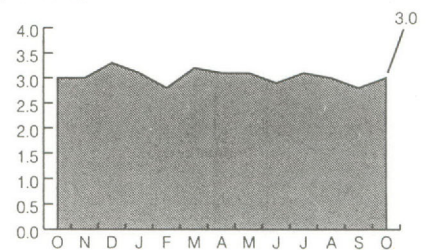


Vehicle Bridge Crossings from Mexico to Texas

City	Oct 06	%Share	05 vs. 06		YTD 05	YTD 06	%Share	YTD %Chg
			%Chg					
Brownsville	547,692	18.5	0.7		5,591,046	5,633,370	18.7	0.8
Del Rio	152,870	5.2	2.4		1,508,285	1,535,640	5.1	1.8
Eagle Pass	247,006	8.3	-5.7		2,719,648	2,593,721	8.6	-4.6
El Paso	598,217	20.2	0.4		5,897,747	5,821,413	19.3	-1.3
Harlingen	60,651	2.0	1.8		645,050	646,975	2.1	0.3
Laredo	485,774	16.4	-4.6		5,418,011	5,035,072	16.7	-7.1
McAllen-Hidalgo	394,184	13.3	-2.8		4,270,364	4,068,249	13.5	-4.7
Pharr	197,785	6.7	8.4		1,925,872	1,981,830	6.6	2.9
Presidio	61,041	2.1	3.9		610,862	625,523	2.1	2.4
Progreso	80,750	2.7	-1.4		844,359	859,048	2.9	1.7
Rio Grande	55,060	1.9	4.3		552,729	522,491	1.7	-5.5
Roma	79,819	2.7	-1.5		855,243	809,636	2.7	-5.3
Total	2,960,849	100.0	-0.7		30,839,216	30,132,968	100.0	-2.3

Source: Oficina de Caminos y Puentes Federales, Mexico

Vehicles into Texas All Cited Cities
Oct. 2005 vs. Oct. 2006: Down 0.7%
(In Millions)



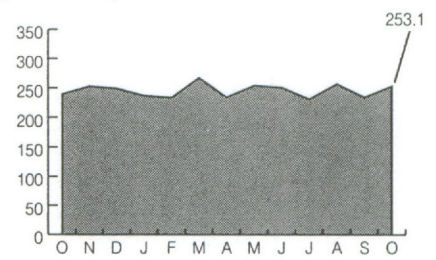
Truck Bridge Crossings from Texas to Mexico

City	Oct 06	%Share	05 vs. 06		YTD 05	YTD 06	%Share	YTD %Chg
			%Chg					
Brownsville	18,934	7.5	5.3		172,497	184,985	7.5	7.2
Del Rio	6,159	2.4	-0.4		71,623	59,969	2.4	-16.3
Eagle Pass	8,685	3.4	4.6		80,568	81,941	3.3	1.7
El Paso	29,062	11.5	7.3		256,600	270,716	11.0	5.5
Harlingen	2,844	1.1	-21.0		35,961	31,899	1.3	-11.3
Laredo	146,548	57.9	7.3		1,240,364	1,406,630	57.4	13.4
McAllen-Hidalgo	340	0.1	-80.5		16,814	9,166	0.4	-45.5
Pharr	34,399	13.6	7.5		327,936	344,539	14.1	5.1
Progreso	2,435	1.0	0.4		19,165	23,480	1.0	22.5
Rio Grande	2,806	1.1	9.4		28,283	28,222	1.2	-0.2
Roma	839	0.3	-0.7		8,218	8,941	0.4	8.8
Total	253,051	100.0	5.7		2,258,029	2,450,488	100.0	8.5

Source: U.S. bridge operators in cited cities

Note: Figures include loaded and empty trucks. El Paso figures do not include Bridge of the Americas.

Trucks into Mexico All Cited Cities
Oct. 2005 vs. Oct. 2006: Up 5.7%
(In Thousands)



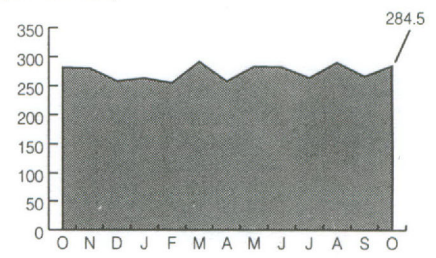
Truck Bridge Crossings from Mexico to Texas

City	Oct 06	%Share	05 vs. 06		YTD 05	YTD 06	%Share	YTD %Chg
			%Chg					
Brownsville	17,741	6.2	9.3		158,020	171,803	6.3	8.7
Del Rio	5,016	1.8	-16.4		53,768	55,775	2.0	3.7
Eagle Pass	8,803	3.1	6.9		82,363	82,023	3.0	-0.4
El Paso	69,071	24.3	3.2		617,969	652,719	23.9	5.6
Falcon Heights	1	0.0	-87.5		66	26	0.0	-60.6
Harlingen	3,339	1.2	-2.1		36,711	35,855	1.3	-2.3
Laredo	135,934	47.8	3.0		1,200,138	1,275,089	46.6	6.2
Pharr	38,177	13.4	-8.1		404,526	388,501	14.2	-4.0
Presidio	492	0.2	0.0		4,162	5,015	0.2	20.5
Progreso	2,732	1.0	14.4		19,245	26,172	1.0	36.0
Rio Grande	2,560	0.9	-29.5		38,900	36,508	1.3	-6.1
Roma	661	0.2	4.4		6,931	7,196	0.3	3.8
Total	284,527	100.0	1.1		2,622,799	2,736,682	100.0	4.3

Source: South Texas Customs Management Center, Laredo & U.S. Customs Office of Public Affairs, El Paso

Note: Figures include loaded and empty trucks.

Trucks into Texas All Cited Cities
Oct. 2005 vs. Oct. 2006: Up 1.1%
(In Thousands)



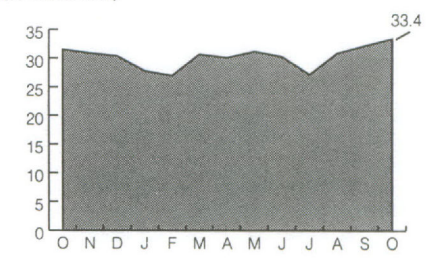
Rail Car Crossings from Texas to Mexico

City	Oct 06	%Share	05 vs. 06		YTD 05	YTD 06	%Share	YTD %Chg
			%Chg					
Brownsville	5,293	15.8	77.8		31,524	42,808	14.2	35.8
Eagle Pass	6,575	19.7	-8.5		64,216	61,260	20.4	-4.6
El Paso	N/A	N/A	N/A		N/A	N/A	N/A	N/A
Laredo	21,538	64.5	0.8		201,805	196,782	65.4	-2.5
Total	33,406	100.0	5.9		297,545	300,850	100.0	1.1

Source: Railroad companies in cited cities

Note: Figures for El Paso are not available.

Rail Cars into Mexico All Cited Cities
Oct. 2005 vs. Oct. 2006: Up 5.9%
(In Thousands)

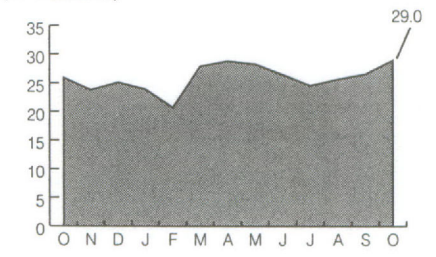


Rail Car Crossings from Mexico to Texas

City	Oct 06	%Share	05 vs. 06		YTD 05	YTD 06	%Share	YTD %Chg
			%Chg					
Brownsville	609	2.1	26.6		6,135	4,708	1.8	-23.3
Eagle Pass	3,985	13.7	87.4		18,690	37,289	14.2	99.5
El Paso	9,316	32.1	26.3		50,830	84,698	32.3	66.6
Laredo	15,126	52.1	-5.0		140,227	135,211	51.6	-3.6
Total	29,036	100.0	12.1		215,882	261,906	100.0	21.3

Source: Railroad companies in cited cities & U.S. Customs Office of Public Affairs, El Paso

Rail Cars into Texas All Cited Cities
Oct. 2005 vs. Oct. 2006: Up 12.1%
(In Thousands)

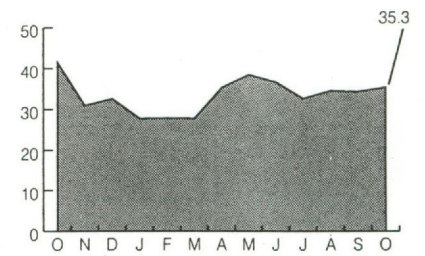


Revenues Collected by U.S. Customs District of Laredo (in U.S.\$)

City	Oct 06	%Share	05 vs. 06		YTD 05	YTD 06	%Share	%Chg
			%Chg					
Brownsville	1,676,408	4.7	-62.6		23,716,098	19,797,454	6.0	-16.5
Del Rio	140,584	0.4	23.2		1,178,291	1,692,402	0.5	43.6
Eagle Pass	1,153,379	3.3	-23.1		13,027,671	14,075,880	4.3	8.0
McAllen-Hidalgo	5,611,927	15.9	-31.6		45,486,003	40,884,107	12.4	-10.1
Laredo	26,612,654	75.4	-2.0		240,729,614	252,593,641	76.5	4.9
Progreso	35,855	0.1	27.1		264,940	325,361	0.1	22.8
Rio Grande	23,238	0.1	36.6		219,728	256,217	0.1	16.6
Roma	54,411	0.2	257.7		231,513	474,058	0.1	104.8
Total	35,308,455	100.0	-15.0		324,853,857	330,099,121	100.0	1.6

Source: South Texas Customs Management Center, Laredo
 Note: Totals may not add up due to rounding.

Customs Revenues for the District of Laredo
 Oct. 2005 vs. Oct. 2006: Down 15.0%
 (In Millions of U.S.\$)

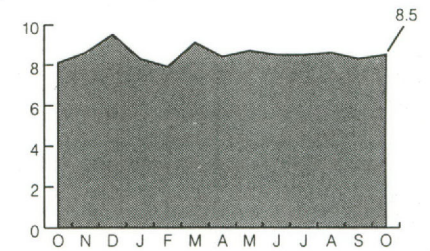


Revenues Collected by U.S. Bridge Operators (in U.S.\$)

City	Oct 06	%Share	05 vs. 06		YTD 05	YTD 06	%Share	%Chg
			%Chg					
Brownsville	1,291,582	15.2	2.2		11,816,023	13,026,181	15.4	10.2
Del Rio	284,949	3.4	3.1		2,842,156	2,855,082	3.4	0.5
Eagle Pass	565,264	6.7	2.0		5,747,986	5,499,019	6.5	-4.3
El Paso	1,233,706	14.5	4.1		11,519,387	11,817,854	14.0	2.6
Harlingen	176,155	2.1	-0.4		1,728,159	1,888,271	2.2	9.3
Laredo	3,260,281	38.4	6.7		27,562,798	32,366,069	38.3	17.4
McAllen-Hidalgo	886,960	10.4	-5.2		9,196,772	9,056,267	10.7	-1.5
Pharr	571,296	6.7	12.2		5,540,859	5,849,134	6.9	5.6
Roma	219,272	2.6	22.1		1,860,981	2,219,778	2.6	19.3
Total	8,489,465	100.0	4.3		77,815,121	84,577,655	100.0	8.7

Source: U.S. bridge operators in cited cities
 Note: El Paso figures do not include Bridge of the Americas (Toll-free). Totals may not add up due to rounding.

Bridge Revenues All Cited Cities
 Oct. 2005 vs. Oct. 2006: Up 4.3%
 (In Millions of U.S.\$)

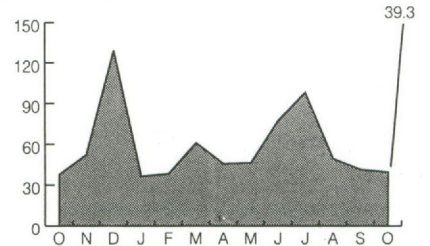


Tourist Visas Issued for Entry into Mexico

City	Oct 06	%Share	05 vs. 06		YTD 05	YTD 06	%Share	%Chg
			%Chg					
Del Rio	485	1.2	6.1		6,025	6,183	1.2	2.6
El Paso	7,956	20.2	9.3		99,297	96,232	18.1	-3.1
McAllen-Hidalgo	7,525	19.1	-5.4		109,402	108,651	20.4	-0.7
Brownsville	4,630	11.8	-1.6		65,703	66,864	12.6	1.8
Laredo	16,323	41.5	9.8		205,833	227,324	42.7	10.4
Eagle Pass	2,408	6.1	7.8		26,388	26,673	5.0	1.1
Total	39,327	100.0	4.9		512,648	531,927	100.0	3.8

Source: Instituto Nacional de Migracion, Mexico

Tourist Visas Issued All Cited Cities
 Oct. 2005 vs. Oct. 2006: Up 4.9%
 (In Thousands)



Employment & Unemployment Rates (Texas Border)

City	Employed		%Unemp	Emp Avg		05 vs. 06	Gain/Loss
	Oct 06	Oct 06		Oct 06	YTD 05		
Brownsville	57,519	3,675	6.0	54,915	56,746	3.3	1,831
Del Rio	14,825	804	5.1	14,804	14,894	0.6	91
El Paso	244,552	16,565	6.3	234,395	238,797	1.9	4,402
Harlingen	23,985	1,407	5.5	22,899	23,662	3.3	764
Laredo	83,737	3,955	4.5	76,321	80,982	6.1	4,662
McAllen	57,183	2,720	4.5	53,321	55,831	4.7	2,510
Pharr	21,929	1,213	5.2	20,448	21,411	4.7	963
Total	503,730	30,339	5.7	477,102	492,323	3.2	15,221
Texas Unemployment Rate			4.6				
U.S. Unemployment Rate			4.1				

Source: Texas Workforce Commission
 Note: Figures are preliminary and subject to revision. Totals may not add up due to rounding.

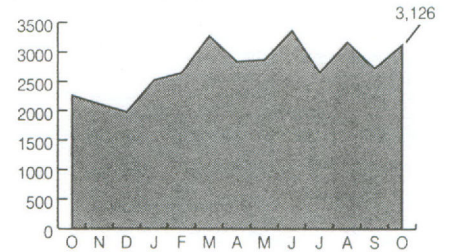
Percent of Unemployment All Cited Cities Combined
 Oct. 2005 vs. Oct. 2006: Down 8.4%
 (In Percent)



Building Permits

Number City	05 vs. 06			YTD 05	YTD 06	YTD	
	Oct 06	%Share	%Chg			%Share	%Chg
Brownsville	242	7.7	3.0	3,007	2,791	9.6	-7.2
Del Rio	183	5.9	0.5	2,219	2,164	7.4	-2.5
Eagle Pass	31	1.0	-22.5	488	381	1.3	-21.9
El Paso	1,323	42.3	28.4	10,992	10,604	36.3	-3.5
Harlingen	282	9.0	5.2	2,785	3,086	10.6	10.8
Laredo	704	22.5	104.1	3,710	7,387	25.3	99.1
McAllen	361	11.5	122.8	1,978	2,770	9.5	40.0
Total	3,126	100.0	38.2	25,179	29,183	100.0	15.9

Building Permits All Cited Cities
Oct. 2005 vs. Oct. 2006
(Number of Permits): Up 38.2%



Dollar Value City	05 vs. 06			YTD 05	YTD 06	YTD	
	Oct 06	%Share	%Chg			%Share	%Chg
Brownsville	15,536,146	7.2	20.8	227,451,147	209,719,331	11.8	-7.8
Del Rio	1,801,851	0.8	18.5	24,475,602	22,389,250	1.3	-8.5
Eagle Pass	2,387,767	1.1	-1.0	42,356,382	22,538,386	1.3	-46.8
El Paso	93,815,857	43.3	-8.1	726,412,281	744,099,788	42.0	2.4
Harlingen	5,027,601	2.3	-25.1	65,993,866	85,930,660	4.8	30.2
Laredo	33,283,929	15.4	63.5	366,286,618	377,430,237	21.3	3.0
McAllen	64,775,530	29.9	253.4	251,460,797	310,722,372	17.5	23.6
Total	216,628,681	100.0	31.9	1,704,436,693	1,772,830,024	100.0	4.0

(Value of Permits In Millions of U.S.\$): Up 31.9%

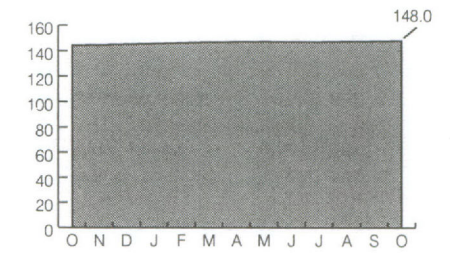


Source: Permit Departments in cited cities
Note: Dollar value totals may not add up due to rounding.

Power Connections (in Service)

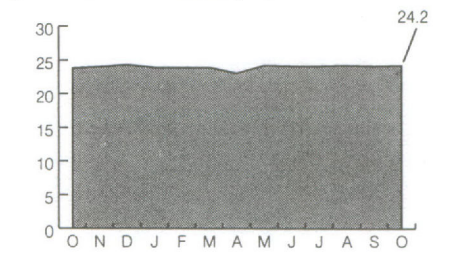
Residential City	05 vs. 06			Average YTD 05	Average YTD 06	YTD	
	Oct 06	%Share	%Chg			%Share	%Chg
Brownsville	N/A	N/A	N/A	N/A	N/A	N/A	N/A
Del Rio	14,891	10.1	1.3	14,682	14,839	10.1	1.1
Eagle Pass	11,028	7.4	1.8	10,744	10,976	7.5	2.2
El Paso	N/A	N/A	N/A	N/A	N/A	N/A	N/A
Harlingen	23,636	16.0	2.4	23,078	23,547	16.0	2.0
Laredo	60,571	40.9	3.2	57,950	59,990	40.8	3.5
McAllen	37,901	25.6	2.5	36,673	37,556	25.6	2.4
Total	148,027	100.0	2.6	143,126	146,908	100.0	2.6

Power Connections All Cited Cities
Oct. 2005 vs. Oct. 2006
(Residential - In Thousands): Up 2.6%



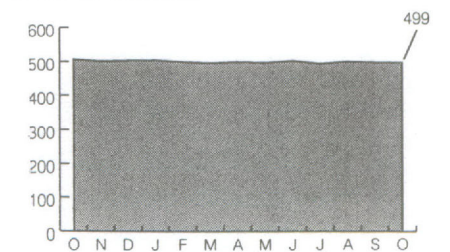
Commercial City	05 vs. 06			Average YTD 05	Average YTD 06	YTD	
	Oct 06	%Share	%Chg			%Share	%Chg
Brownsville	N/A	N/A	N/A	N/A	N/A	N/A	N/A
Del Rio	2,356	9.7	0.9	2,309	2,346	9.8	1.6
Eagle Pass	1,706	7.0	0.6	1,687	1,703	7.1	0.9
El Paso	N/A	N/A	N/A	N/A	N/A	N/A	N/A
Harlingen	4,038	16.7	-0.5	4,004	4,038	16.9	0.8
Laredo	9,288	38.4	3.4	8,901	9,089	37.9	2.1
McAllen	6,828	28.2	2.0	6,604	6,783	28.3	2.7
Total	24,216	100.0	1.9	23,505	23,958	100.0	1.9

(Commercial - In Thousands): Up 1.9%



Industrial City	05 vs. 06			Average YTD 05	Average YTD 06	YTD	
	Oct 06	%Share	%Chg			%Share	%Chg
Brownsville	N/A	N/A	N/A	N/A	N/A	N/A	N/A
Del Rio	43	8.6	-2.3	44	44	8.8	-1.4
Eagle Pass	29	5.8	-6.5	31	29	5.7	-6.5
El Paso	N/A	N/A	N/A	N/A	N/A	N/A	N/A
Harlingen	105	21.0	4.0	102	103	20.7	1.1
Laredo	201	40.3	-2.0	204	202	40.4	-1.0
McAllen	121	24.2	-3.2	121	122	24.4	1.0
Total	499	100.0	-1.4	502	499	100.0	-0.5

(Industrial): Down 1.4%

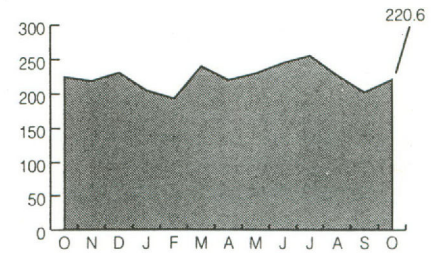


Source: American Electric Power Company, Brownsville Public Utilities Board & El Paso Electric Company
Note: Totals may not add up due to rounding.

Air Passenger Service Activity (Number of Passengers)

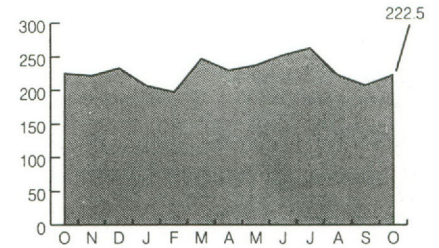
City	05 vs. 06			YTD			
	Oct 06	%Share	%Chg	YTD 05	YTD 06	%Share	%Chg
Brownsville	7,686	3.5	14.2	123,640	75,004	3.4	-39.3
El Paso	142,678	64.7	1.2	1,388,760	1,400,321	62.6	0.8
Harlingen	31,641	14.3	-20.4	415,622	350,256	15.7	-15.7
Laredo	9,123	4.1	22.6	78,693	80,603	3.6	2.4
McAllen	29,498	13.4	-0.1	296,840	329,242	14.7	10.9
Total	220,626	100.0	-1.7	2,303,555	2,235,426	100.0	-3.0

Air Passenger Activity All Cited Cities
Oct. 2005 vs. Oct. 2006
(Arrivals – In Thousands): Down 1.7%



City	05 vs. 06			YTD			
	Oct 06	%Share	%Chg	YTD 05	YTD 06	%Share	%Chg
Brownsville	7,298	3.3	6.8	128,941	76,476	3.3	-40.7
El Paso	142,538	64.0	1.2	1,410,592	1,422,953	62.3	0.9
Harlingen	33,634	15.1	-17.9	431,031	368,900	16.1	-14.4
Laredo	8,308	3.7	16.6	76,103	79,344	3.5	4.3
McAllen	30,771	13.8	5.3	304,745	336,621	14.7	10.5
Total	222,549	100.0	-1.1	2,351,412	2,284,294	100.0	-2.9

(Departures – In Thousands): Down 1.1%

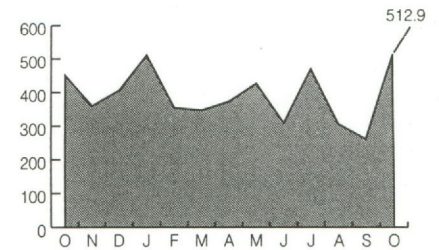


Source: Airports in cited cities

Port of Brownsville (Total Cargo in Metric Tons)

Cargo Type	05 vs. 06			YTD			
	Oct 06	%Share	%Chg	YTD 05	YTD 06	%Share	%Chg
Break Bulk	293,347	57.2	2.3	1,461,460	2,290,879	59.3	56.8
Containers	0	0.0	0.0	0	0	0.0	0.0
Grain Bulk	0	0.0	0.0	14,403	0	0.0	-100.0
Liquid	4,745	0.9	88.7	188,142	257,928	6.7	37.1
Machinery	1,564	0.3	-88.3	65,526	43,812	1.1	-33.1
Ores - Minerals	0	0.0	0.0	80,587	0	0.0	-100.0
Other	0	0.0	0.0	205,601	23,398	0.6	-88.6
Petroleum	213,250	41.6	44.6	1,203,905	1,245,839	32.3	3.5
Steel - Other Minerals	0	0.0	0.0	98,448	0	0.0	-100.0
Total	512,905	100.0	13.9	3,318,072	3,861,857	100.0	16.4

Port of Brownsville Total Cargo
Oct. 2005 vs. Oct. 2006: Up 13.9%
(In Thousands of Metric Tons)



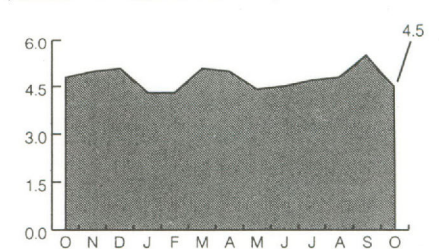
Source: Port of Brownsville

Note: Totals may not add up due to rounding.

Port of Corpus Christi (Cargo in U.S. Tons)

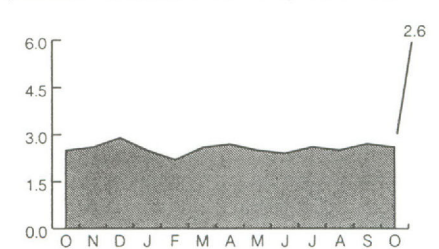
Cargo Type	05 vs. 06			YTD			
	Oct 06	%Share	%Chg	YTD 05	YTD 06	%Share	%Chg
Break Bulk	0	0.0	-100.0	232,264	99,171	0.2	-57.3
Chemical	6,033	0.1	-17.5	119,238	105,665	0.2	-11.4
Containers	0	0.0	0.0	0	0	0.0	0.0
Dry Bulk	400,074	8.8	-26.7	4,670,418	4,363,587	9.3	-6.6
Grain Bulk	0	0.0	-100.0	9,409	9,521	0.0	1.2
Liquid	0	0.0	0.0	251,059	147,534	0.3	-41.2
Petroleum	4,132,128	91.1	-2.8	41,401,822	42,291,529	89.9	2.1
Total	4,538,236	100.0	-5.7	46,684,210	47,017,006	100.0	0.7

Port of Corpus Christi Cargo
Oct. 2005 vs. Oct. 2006
(Inbound – In Millions of U.S. Tons): Down 5.7%



Cargo Type	05 vs. 06			YTD			
	Oct 06	%Share	%Chg	YTD 05	YTD 06	%Share	%Chg
Break Bulk	20,571	0.8	-16.6	116,184	90,519	0.4	-22.1
Chemical	150,046	5.8	6.2	1,372,052	1,226,324	4.9	-10.6
Containers	0	0.0	0.0	0	0	0.0	0.0
Dry Bulk	235,822	9.1	8.3	3,126,605	2,051,234	8.1	-34.4
Grain Bulk	291,354	11.3	44.8	1,786,950	1,539,849	6.1	-13.8
Liquid	9,562	0.4	-6.5	169,287	39,273	0.2	-76.8
Petroleum	1,877,002	72.6	-3.5	19,242,014	20,270,945	80.4	5.3
Total	2,584,357	100.0	1.7	25,813,092	25,218,144	100.0	-2.3

(Outbound – In Millions of U.S. Tons): Down 1.7%



Source: Port of Corpus Christi

Note: Totals may not add up due to rounding.

Table 5
U.S. Exports to Mexico Processed by U.S.-Mexico Border Ports
(In U.S. Dollars)

Port of Entry	2005 Oct YTD Total	2006 Oct YTD Total	'05 vs. '06 Percent Change
Brownsville	5,279,766,270	5,797,767,269	9.8
Del Rio	1,219,256,703	1,245,607,032	2.2
Eagle Pass	2,880,895,740	3,092,601,806	7.3
Laredo	33,624,117,499	38,338,463,994	14.0
Hidalgo	6,379,416,503	6,986,665,953	9.5
Rio Grande	67,144,202	116,952,314	74.2
Progreso	101,291,555	140,635,257	38.8
Roma	57,122,446	103,375,836	81.0
Edinburg Airport	465,300	0	-100.0
El Paso	15,660,234,475	17,763,220,237	13.4
Presidio	204,804,896	269,580,011	31.6
Fabens	4,308,274	1,172,061	-72.8
Columbus	16,492,309	11,321,961	-31.4
Santa Teresa	342,806,089	344,700,577	0.6
Santa Teresa Airport	7,875	14,220	80.6
Andrade	2,422,669	1,735,568	-28.4
Calexico	6,235,411	26,942,998	332.1
San Ysidro	109,413,624	119,864,138	9.6
Tecate	450,891,521	498,226,300	10.5
Otay Mesa Station	7,743,644,106	8,375,959,837	8.2
Calexico-East	3,870,867,456	4,219,221,979	9.0
Douglas	279,277,008	398,071,361	42.5
Lukeville	13,386,257	6,131,382	-54.2
Naco	61,834,089	82,900,783	34.1
Nogales	4,069,973,878	5,294,312,355	30.1
Sasabe	5,563,240	612,862	-89.0
San Luis	272,435,231	302,539,038	11.0
Total Exports	82,724,074,626	93,538,597,129	13.1

Table 6
U.S. Imports from Mexico Processed by U.S.-Mexico Border Ports
(In U.S. Dollars)

Port of Entry	2005 Oct YTD Total	2006 Oct YTD Total	'05 vs. '06 Percent Change
Brownsville	4,277,548,939	4,753,963,164	11.1
Del Rio	1,350,839,809	1,381,200,749	2.2
Eagle Pass	3,294,670,452	6,365,522,306	93.2
Laredo	44,095,527,887	48,327,647,555	9.6
Hidalgo	8,867,246,569	9,929,654,955	12.0
Rio Grande	122,220,646	182,818,899	49.6
Progreso	7,369,973	38,946,205	428.4
Roma	8,040,871	9,476,188	17.9
Edinburg Airport	0	0	-
El Paso	20,353,381,863	21,509,585,340	5.7
Presidio	108,596,989	108,594,152	0.0
Fabens	11,089	3,968	-64.2
Columbus	24,133,460	28,490,503	18.1
Santa Teresa	615,216,554	610,188,682	-0.8
Santa Teresa Airport	0	0	-
Andrade	0	0	-
Calexico	0	0	-
San Ysidro	0	136,156	-
Tecate	523,201,108	531,052,683	1.5
Otay Mesa Station	12,320,480,275	15,183,821,558	23.2
Calexico-East	5,041,918,434	5,605,087,355	11.2
Douglas	657,812,087	585,822,821	-10.9
Lukeville	143,080	160,803	12.4
Naco	30,884,752	35,060,757	13.5
Nogales	7,066,833,679	10,317,767,671	46.0
Sasabe	0	0	-
San Luis	519,711,676	489,928,420	-5.7
Total Imports	109,285,790,192	125,994,930,890	15.3

Source: U.S. Department of Commerce data compiled by the Texas Center at Texas A&M International University (Tables 1-6)

Subscribe now to *Border Business Indicators!* Annual subscription rate is \$36.00 (12 monthly issues). Enclose this subscription form or photocopy with payment. Payable in U.S. funds only.

Type of Subscription:
 New
 Renewal

Name _____

Title _____

Check Method of Payment:
 Check
 Money Order

Affiliation/Co. _____

Address _____

Payable to:
 Texas A&M International University

City _____

Send subscription to:
 Texas A&M International University
 Border Business Indicators
 Texas Center
 5201 University Boulevard
 Laredo, TX 78041-1900

State _____ Zip _____ Country _____

Telephone () _____

E-mail Address _____



Texas A&M International University
 Texas Center for Border Economic and Enterprise Development
 5201 University Boulevard
 Laredo, TX 78041-1900

Non-Profit Org.
 U.S. Postage Paid
 Laredo, Texas
 78041
 Permit 231