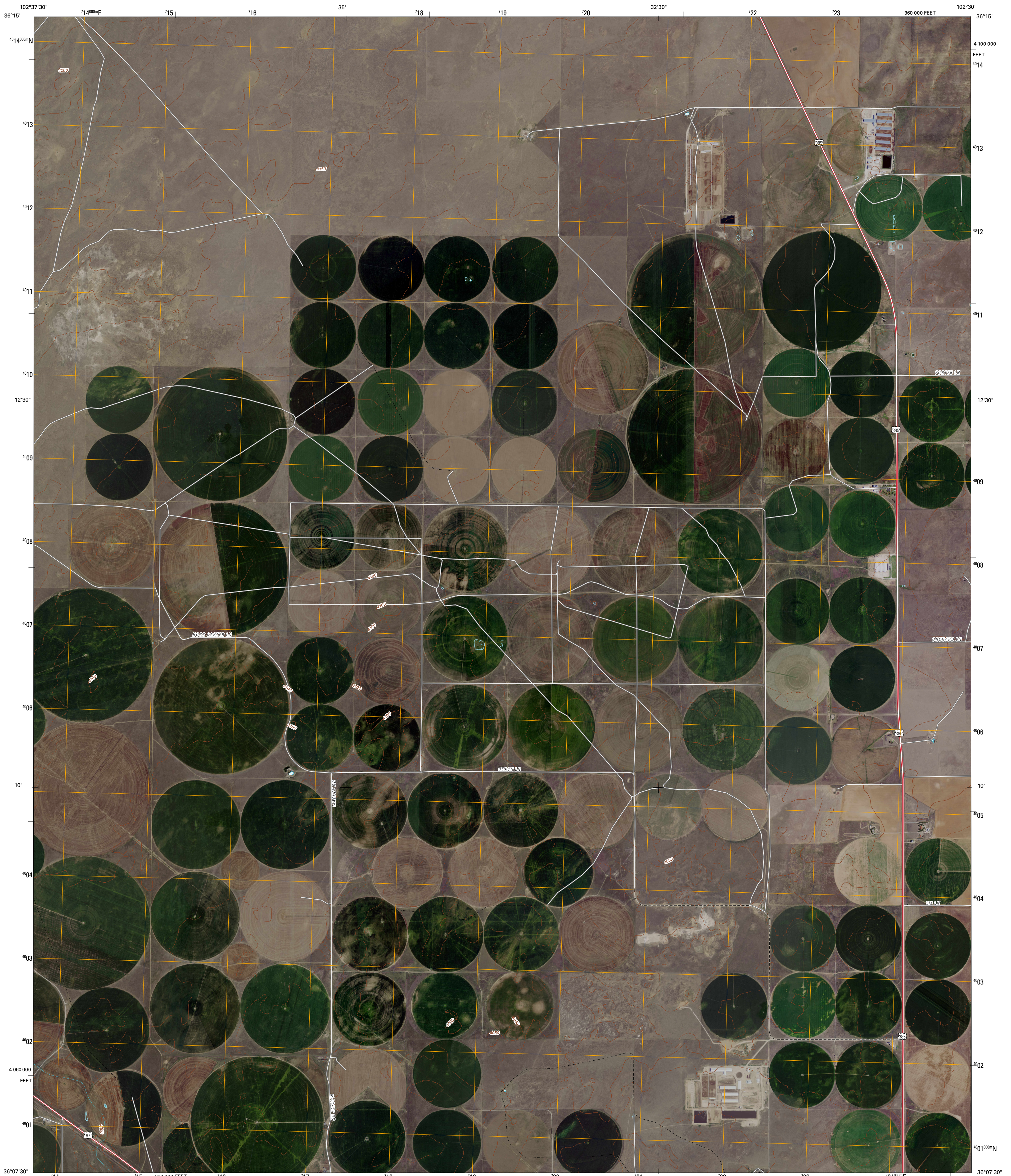




U.S. DEPARTMENT OF THE INTERIOR
U. S. GEOLOGICAL SURVEY

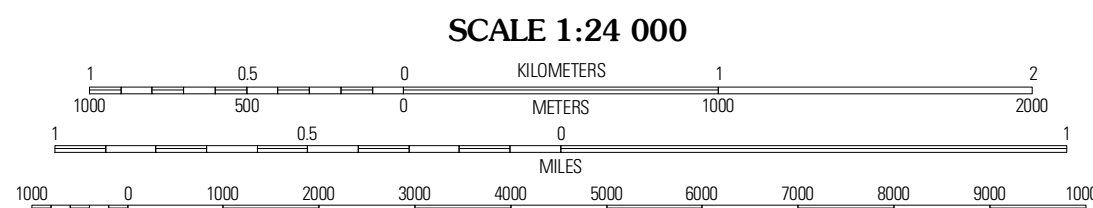
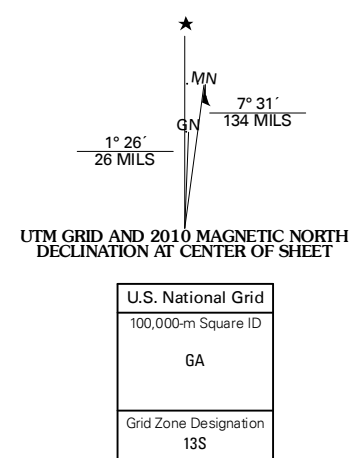


BOLIN NE QUADRANGLE
TEXAS
7.5-MINUTE SERIES



Produced by the United States Geological Survey
North American Datum of 1983 (NAD83)
World Geodetic System of 1984 (WGS84). Projection and
1 000-meter grid: Universal Transverse Mercator, Zone 13S
10 000-foot ticks: Texas Coordinate System of 1983
(north zone)

Imagery.....NAP, August 2008
Roads.....US Census Bureau TIGER data
with limited USGS updates, 2005
Names.....GNIS, 2008
Hydrography.....National Hydrography Dataset, 1995
Contours.....National Elevation Dataset, 2002



SCALE 1:24 000

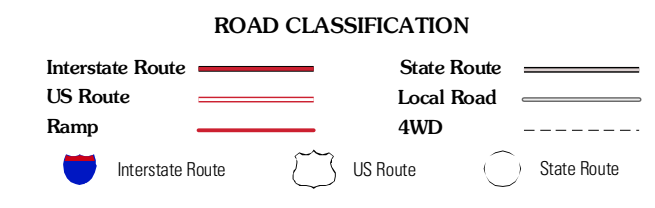
CONTOUR INTERVAL 10 FEET

This map was produced to conform with version 0.5.10 of the
draft USGS Standards for 7.5-Minute Quadrangle Maps.
A metadata file associated with this product is also draft version 0.5.10



QUADRANGLE LOCATION		
Torres Ranch	Pritchard Ranch	Red Cow Drow
Bolin	Bolin NE	Chamberlin
Canyon School	Dalhart West	Dalhart East

ADJOINING 7.5' QUADRANGLES
TX 36102-214



BOLIN NE, TX
2010