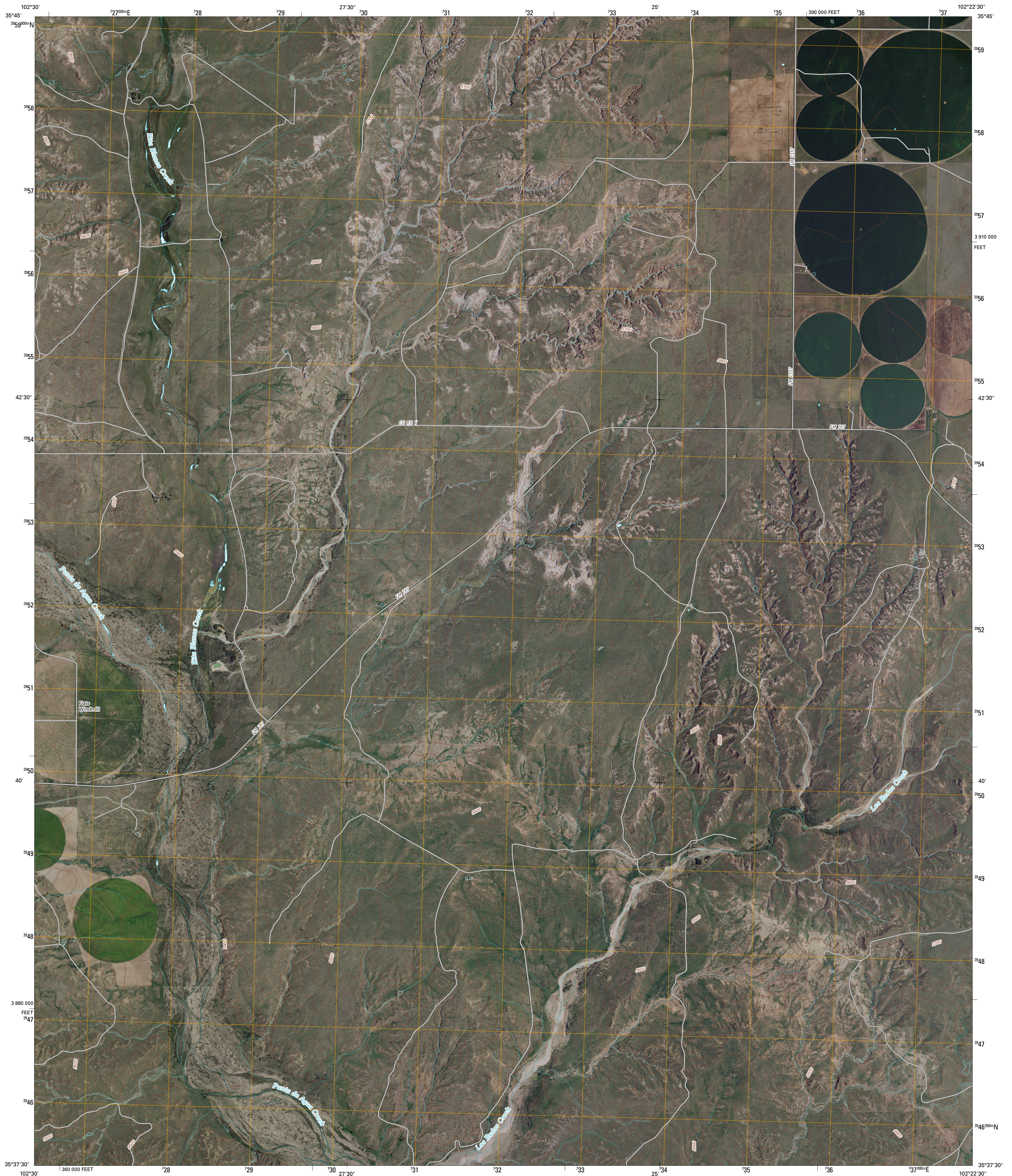




U.S. DEPARTMENT OF THE INTERIOR
U. S. GEOLOGICAL SURVEY



CHANNING NW QUADRANGLE
TEXAS
7.5-MINUTE SERIES

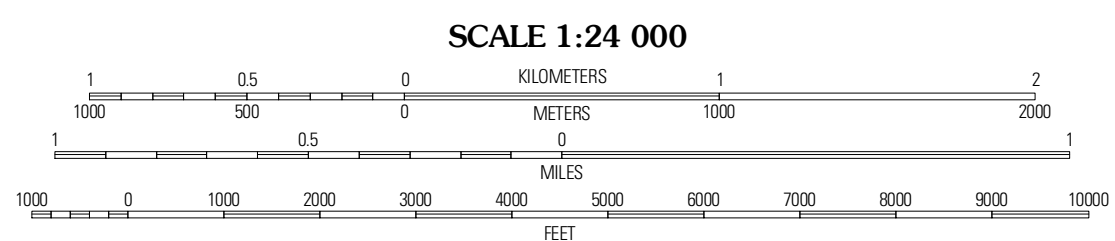


Produced by the United States Geological Survey
North American Datum of 1983 (NAD83)
World Geodetic System of 1984 (WGS84). Projection and
1 000-meter grid: Universal Transverse Mercator, Zone 13S
10 000-foot ticks: Texas Coordinate System of 1983
(north zone)

Imagery.....NAP, August 2008
Roads.....US Census Bureau TIGER data
with limited USGS updates, 2005
Names.....GNIS, 2008
Hydrography.....National Hydrography Dataset, 1995
Contours.....National Elevation Dataset, 2002

UTM GRID AND 2010 MAGNETIC NORTH
DECLINATION AT CENTER OF SHEET

U.S. National Grid	13S
100,000m Square ID	6V
Grid Zone Designation	13S



CONTOUR INTERVAL 20 FEET

This map was produced to conform with version 0.5.10 of the
draft USGS Standards for 7.5-Minute Quadrangle Maps.
A metadata file associated with this product is also draft version 0.5.10

QUADRANGLE LOCATION

King SE	Hartley SW	Hartley SE
Proctor Ranch	Channing NW	Channing
Mary Post Camp	Terry House	Boys Ranch West

ADJOINING 7.5 QUADRANGLES
TX 351 02-423

ROAD CLASSIFICATION

Interstate Route	State Route
US Route	Local Road
Ramp	4WD

CHANNING NW, TX
2010