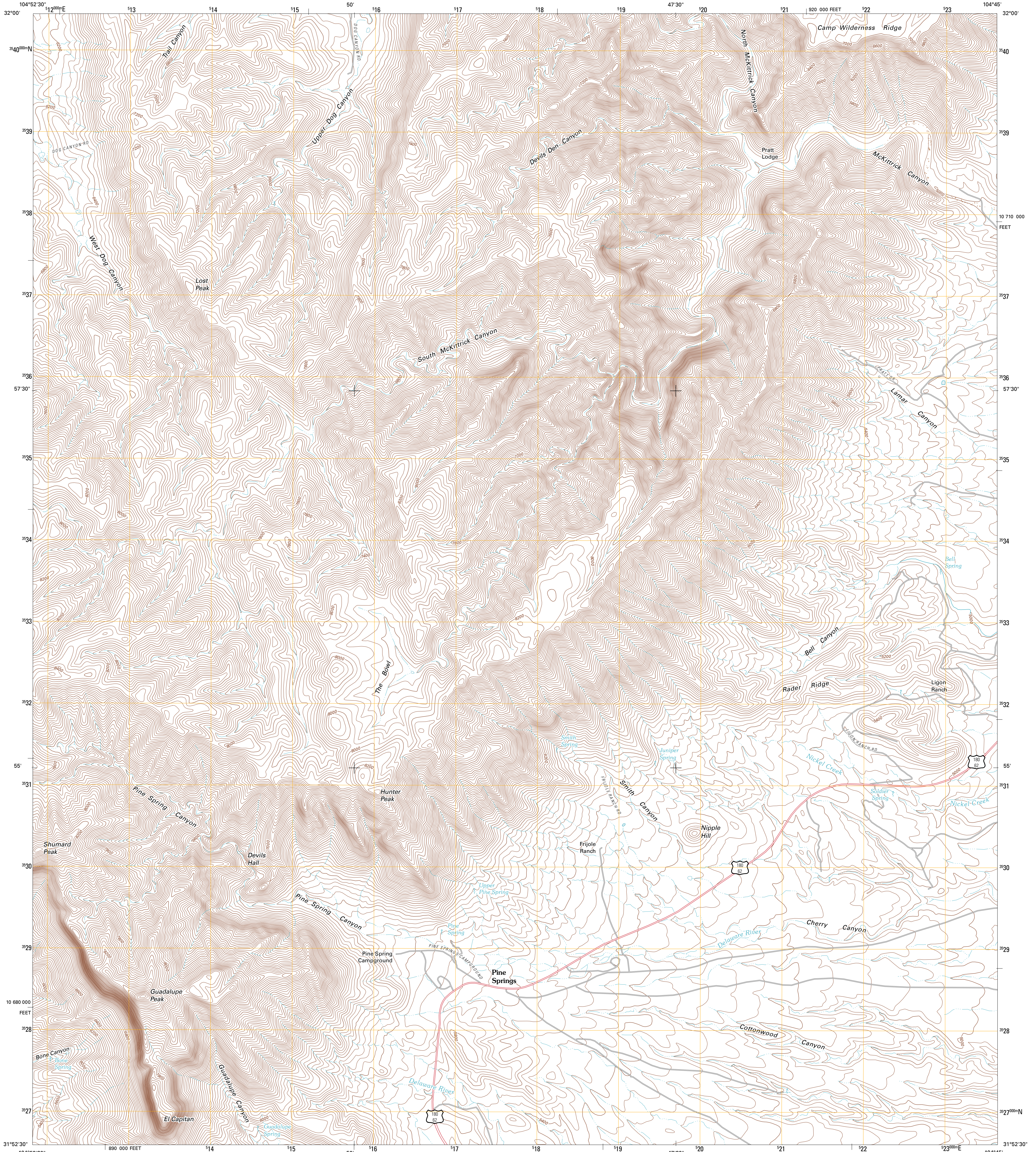




U.S. DEPARTMENT OF THE INTERIOR  
U. S. GEOLOGICAL SURVEY

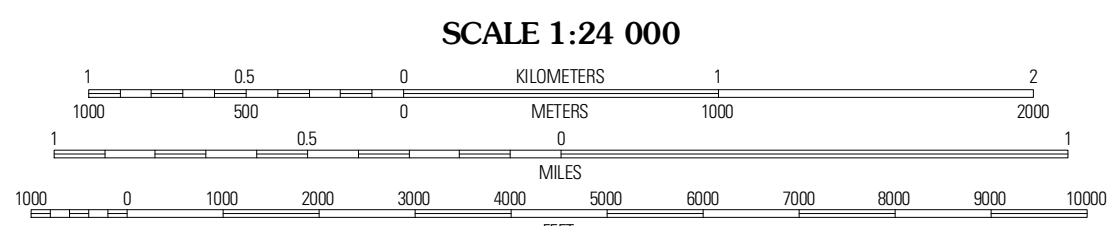
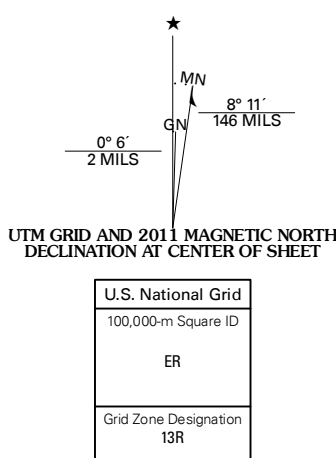


GUADALUPE PEAK QUADRANGLE  
TEXAS  
7.5-MINUTE SERIES



Produced by the United States Geological Survey  
North American Datum of 1983 (NAD83)  
World Geodetic System of 1984 (WGS84). Projection and  
1 000-meter grid. Universal Transverse Mercator, Zone 13R  
10 000-foot ticks: Texas Coordinate System of 1983 (central  
zone)

Imagery: NADP, September 2008  
Roads: 02006-2010 Tale Atlas  
Names: GNIS, 2010  
Hydrography: National Hydrography Dataset, 2008  
Contours: National Elevation Dataset, 2005



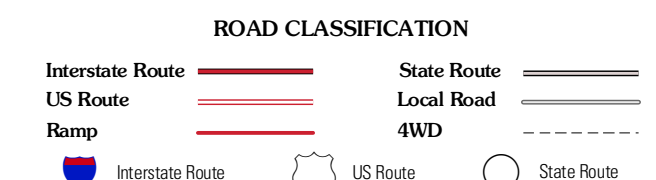
CONTOUR INTERVAL 40 FEET  
NORTH AMERICAN VERTICAL DATUM OF 1988  
This map was produced to conform with version 0.5.10 of the  
draft USGS Standards for 7.5-Minute Quadrangle Maps.  
A metadata file associated with this product is draft version 0.5.11



QUADRANGLE LOCATION

Panther Canyon	El Paso Gap	Gamsight Canyon
P X Flat	Guadalupe Peak	Independence Spring
Patterson Hills	Guadalupe Pass	Long Point

ADJOINING 7.5 QUADRANGLES



GUADALUPE PEAK, TX  
2011