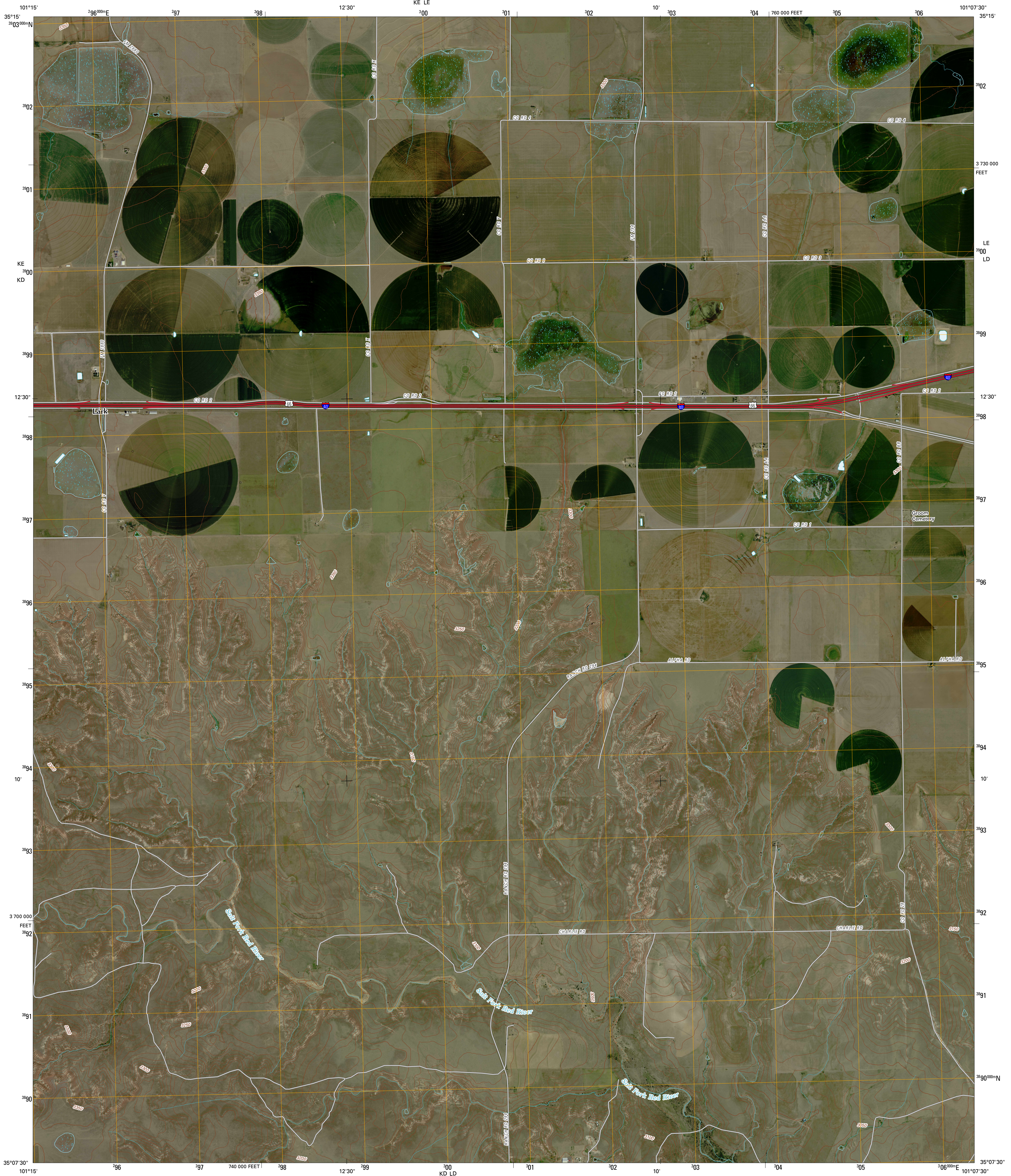




U.S. DEPARTMENT OF THE INTERIOR
U. S. GEOLOGICAL SURVEY

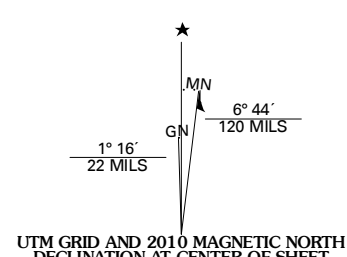


LARK QUADRANGLE
TEXAS
7.5-MINUTE SERIES

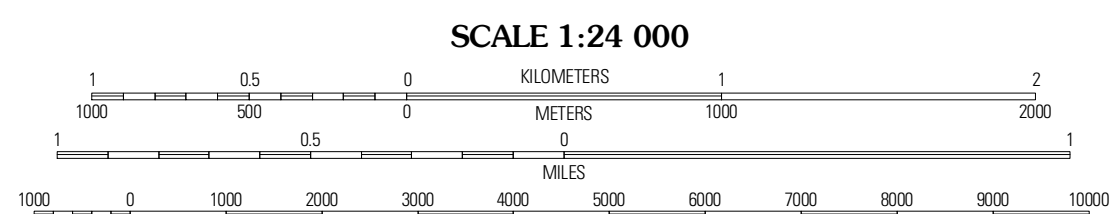


Produced by the United States Geological Survey
North American Datum of 1983 (NAD83)
World Geospatial System of 1984 (WGS84). Projection and
1 000-meter grid. Universal Transverse Mercator, Zone 14S
10 000-foot ticks: Texas Coordinate System of 1983
(north zone)

Imagery: NAIP, August 2008
Roads: US Census Bureau TIGER data
with limited USGS updates, 2005 - 2006
Names: GNIS, 2008
Hydrography: National Hydrography Dataset, 1995
Contours: National Elevation Dataset, 2002

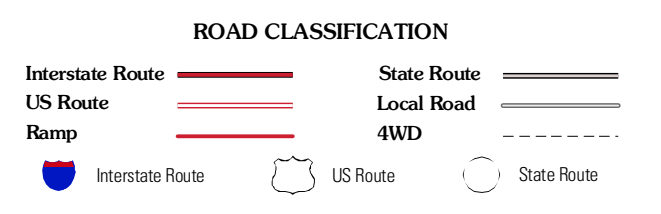
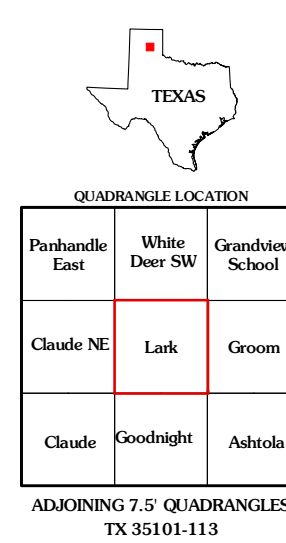


U.S. National Grid	10K (100m Square)
KE LE	10
KD LD	00
Grid Zone Designation	MS



CONTOUR INTERVAL 10 FEET

This map was produced to conform with version 0.5.10 of the
draft USGS Standards for 7.5-Minute Quadrangle Maps.
A metadata file associated with this product is also draft version 0.5.10



LARK, TX
2010