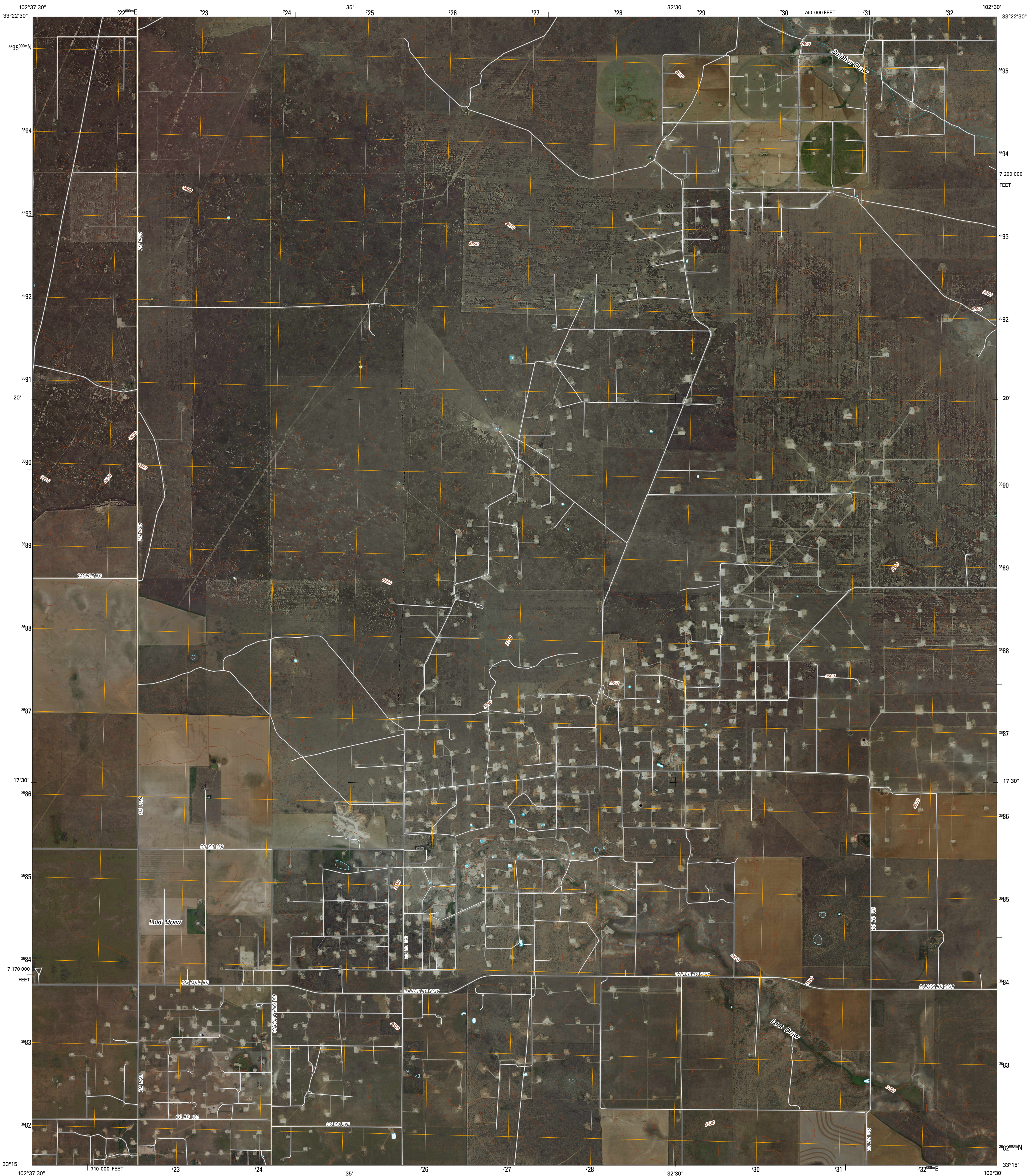




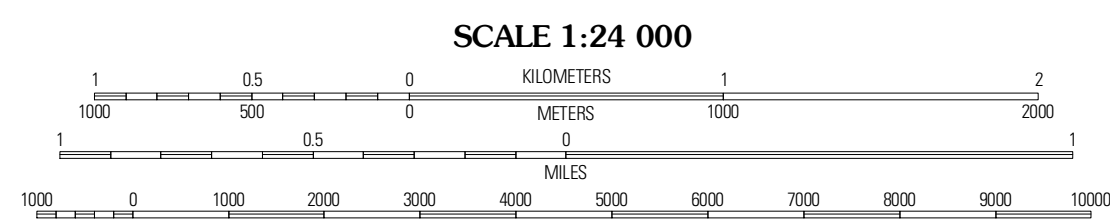
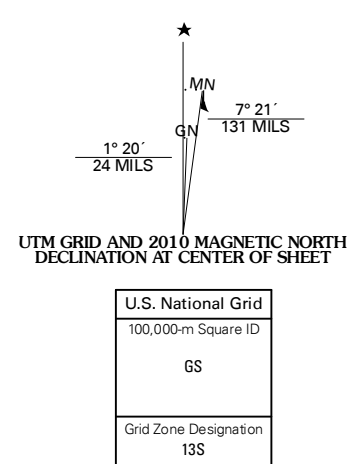
U.S. DEPARTMENT OF THE INTERIOR  
U. S. GEOLOGICAL SURVEY



NORTH OF TOKIO QUADRANGLE  
TEXAS  
7.5-MINUTE SERIES



Produced by the United States Geological Survey  
North American Datum of 1983 (NAD83)  
US Census Bureau TIGER data  
with limited USGS updates, 2006 - 2008  
Names, 2008  
Hydrography, 1995  
Contours, 2007  
National Elevation Dataset, 2007



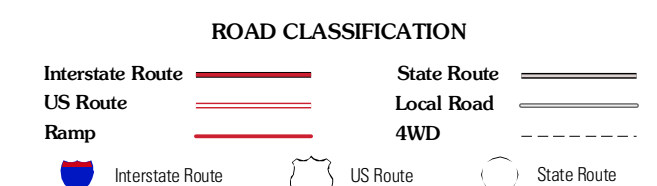
This map was produced to conform with version 0.5.10 of the draft USGS Standards for 7.5-Minute Quadrangle Maps. A metadata file associated with this product is also draft version 0.5.10



QUADRANGLE LOCATION

South Fork Sulphur Draw	West of Sundown	Sundown
Lost Draw	North of Tokio	Pool
Tokio NW	Tokio	Gomez

ADJOINING 7.5' QUADRANGLES  
TX 33102-241



NORTH OF TOKIO, TX  
2010