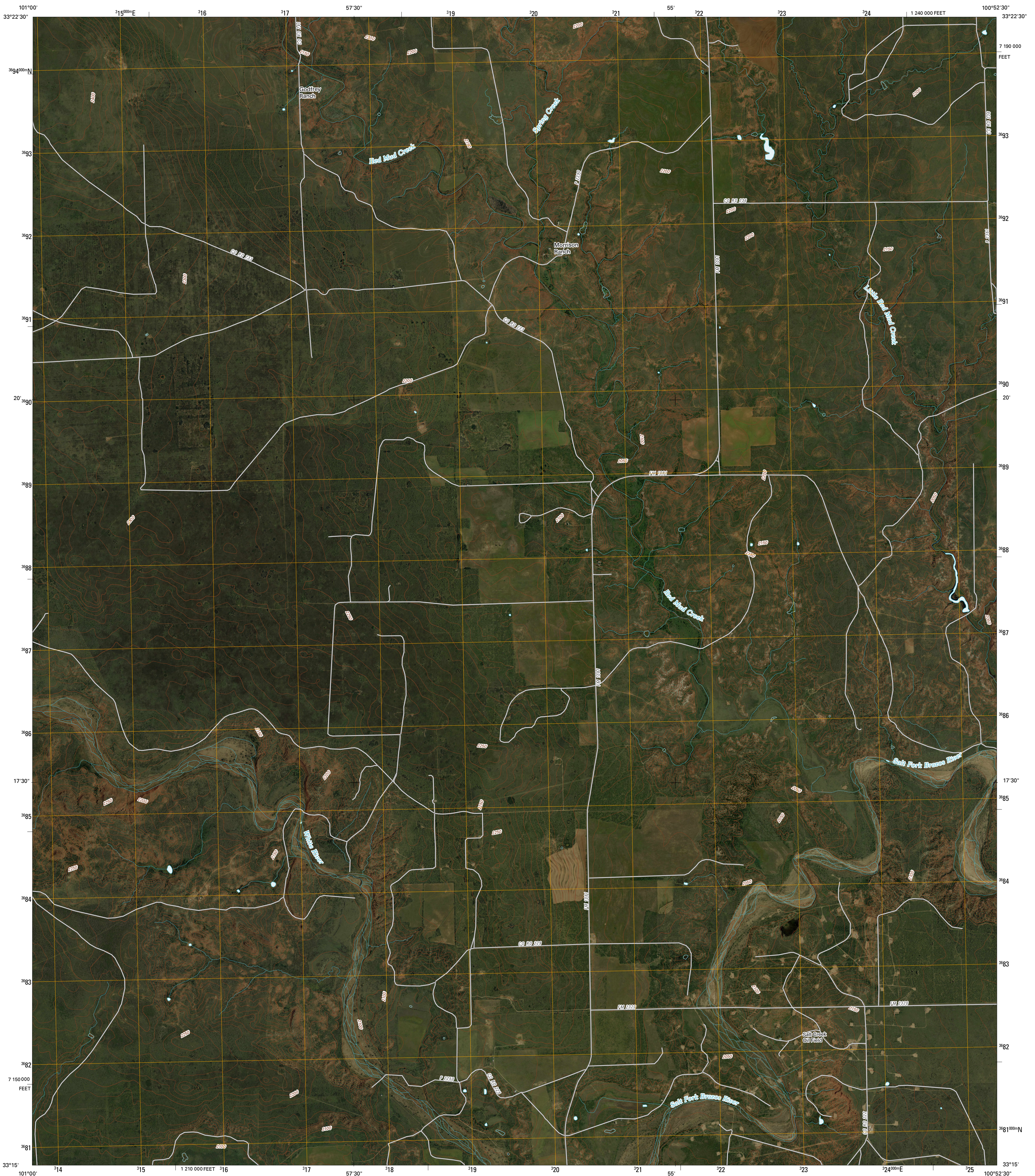




U.S. DEPARTMENT OF THE INTERIOR
U. S. GEOLOGICAL SURVEY

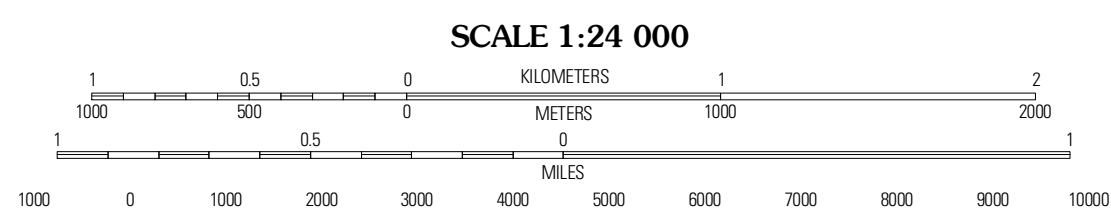
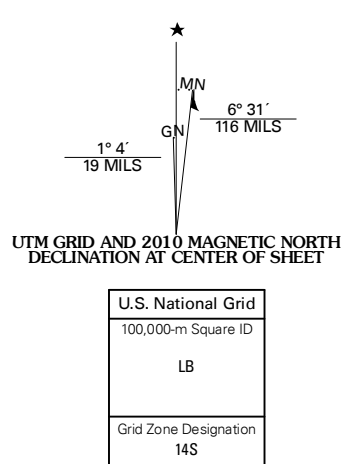


SPUR SW QUADRANGLE
TEXAS
7.5-MINUTE SERIES



Produced by the United States Geological Survey
North American Datum of 1983 (NAD83)
US Census Bureau TIGER data with limited USGS updates, 2008
World Geodetic System of 1984 (WGS84), Projection and 1 000-meter grid: Universal Transverse Mercator, Zone 14S
10 000-foot ticks: Texas Coordinate System of 1983 (north central zone)
Contours: National Elevation Dataset, 2007

Imagery: NAIP, August 2008
Roads: US Census Bureau TIGER data with limited USGS updates, 2008
Names: GNIS, 2008
Hydrography: National Hydrography Dataset, 1995
Contours: National Elevation Dataset, 2007



SCALE 1:24 000

CONTOUR INTERVAL 10 FEET

This map was produced to conform with version 0.5.10 of the draft USGS Standards for 7.5-Minute Quadrangle Maps. A metadata file associated with this product is also draft version 0.5.10



QUADRANGLE LOCATION

Smith Tank	Spur NW	Spur
Twimble Creek	Spur SW	White Camp
Cottonwood Creek	T-O Creek	Clairmont West

ADJOINING 7.5' QUADRANGLES
TX 33100 232

ROAD CLASSIFICATION

Interstate Route	State Route
US Route	Local Road
Ramp	4WD
	State Route

SPUR SW, TX
2010