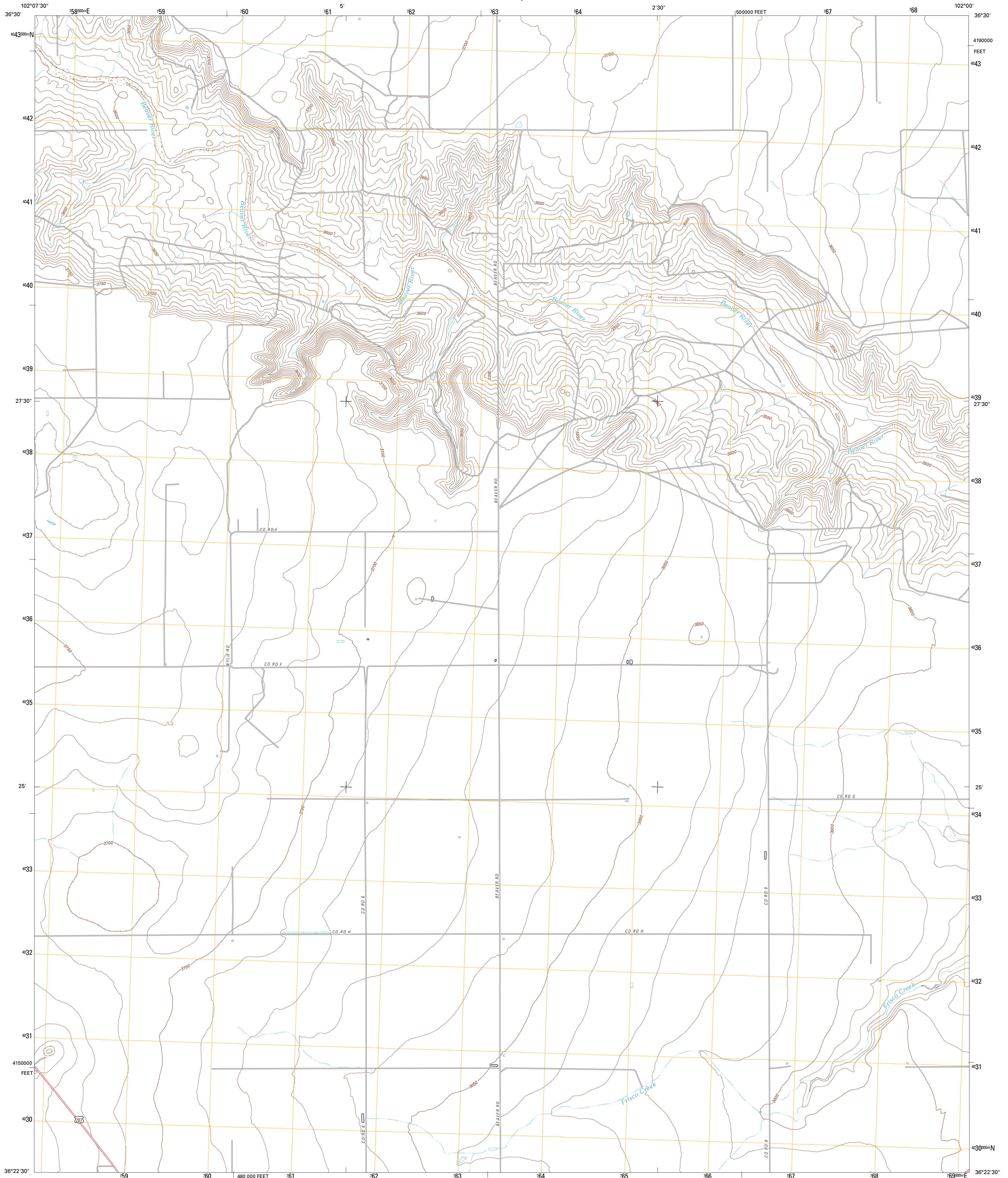




U.S. DEPARTMENT OF THE INTERIOR
U. S. GEOLOGICAL SURVEY

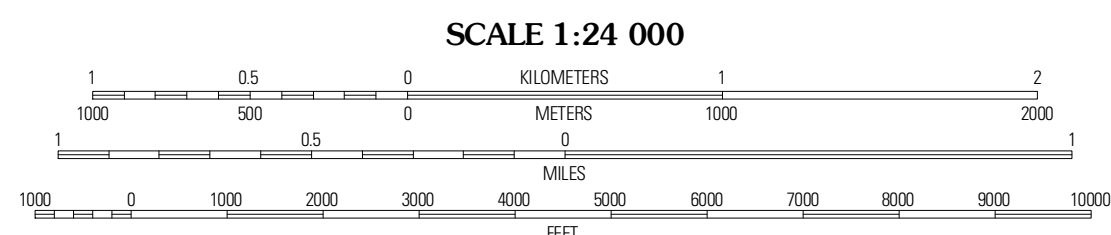
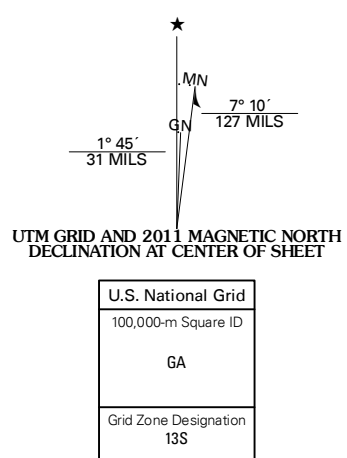


STRATFORD NE QUADRANGLE
TEXAS
7.5-MINUTE SERIES



Produced by the United States Geological Survey
North American Datum of 1983 (NAD83)
World Geodetic System of 1984 (WGS84). Projection and
1 000-meter grid: Universal Transverse Mercator, Zone 13S
10 000-foot ticks: Texas Coordinate System of 1983 (north
zone)

Imagery:.....NAIP, August 2008
Roads:.....©2006-2010 Tele Atlas
Names:.....GNIS, 2010
Hydrography:.....National Hydrography Dataset, 2008
Contours:.....National Elevation Dataset, 2002

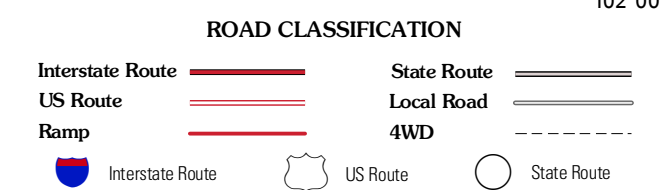


CONTOUR INTERVAL 10 FEET
NORTH AMERICAN VERTICAL DATUM OF 1988
This map was produced to conform with version 0.5.10 of the
draft USGS Standards for 7.5-Minute Quadrangle Maps.
A metadata file associated with this product is draft version 0.5.11



QUADRANGLE LOCATION

Griggs SW	Griggs	Texhoma SW
Kerrick	Stratford NE	Stevens
Brickel	Stratford	Stevens SW



STRATFORD NE, TX
2011

ADJOINING 7.5 QUADRANGLES