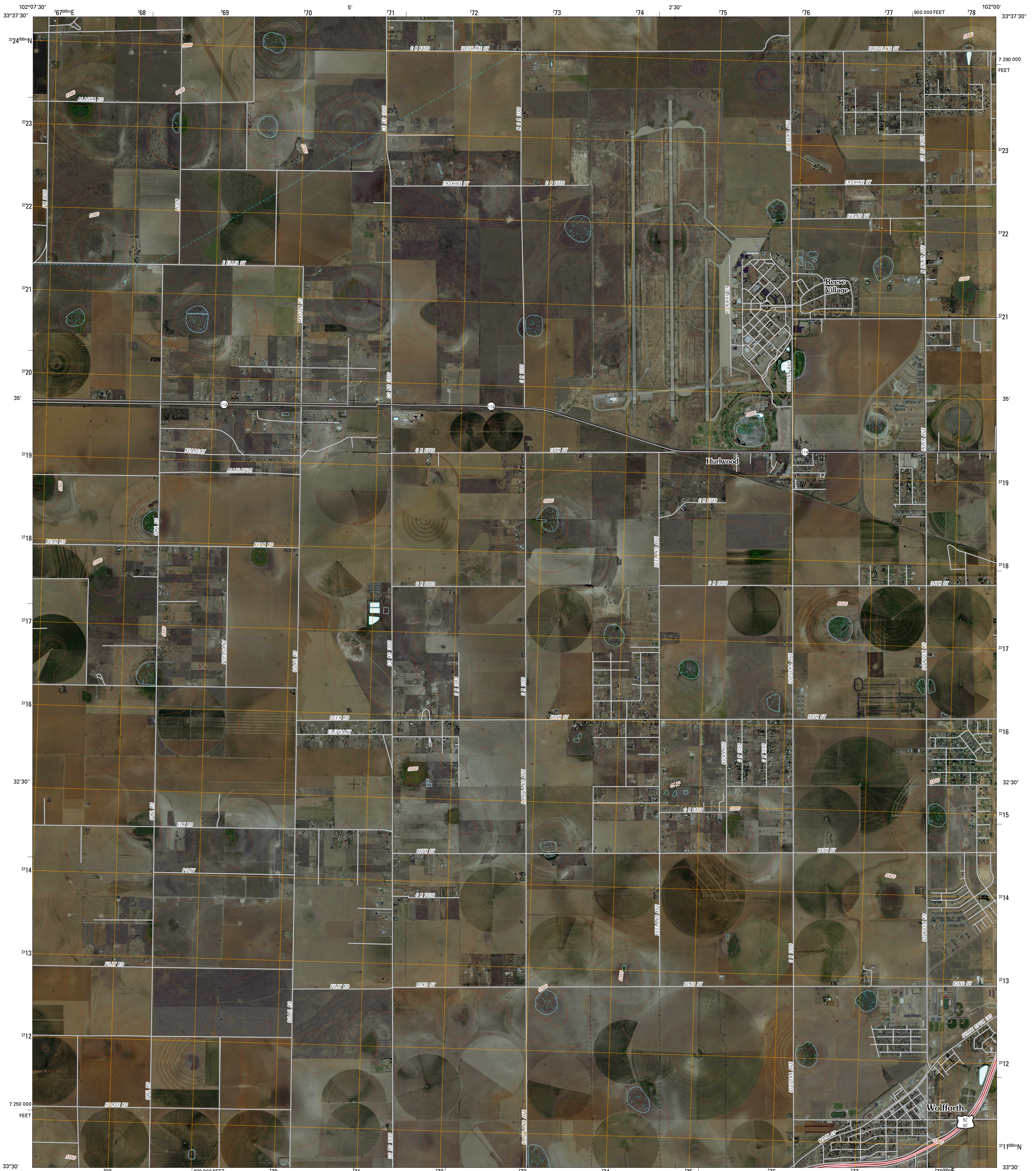




U.S. DEPARTMENT OF THE INTERIOR
U. S. GEOLOGICAL SURVEY

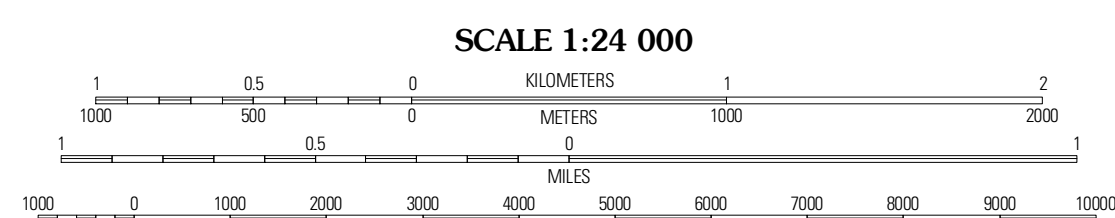
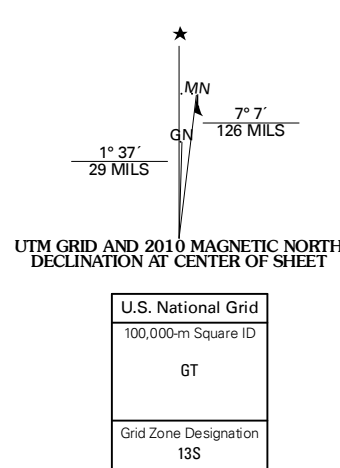


WOLFORTH QUADRANGLE
TEXAS
7.5-MINUTE SERIES



Produced by the United States Geological Survey
North American Datum of 1983 (NAD83)
World Geodetic System of 1984 (WGS84). Projection and
1 000-meter grid: Universal Transverse Mercator, Zone 13S
10 000-foot ticks: Texas Coordinate System of 1983
(north central zone)

Imagery: NAIP, August 2008
Roads: US Census Bureau TIGER data
with limited USGS updates, 2006 - 2008
Names: GNIS, 2008
Hydrography: National Hydrography Dataset, 1995
Contours: National Elevation Dataset, 2007



CONTOUR INTERVAL 10 FEET

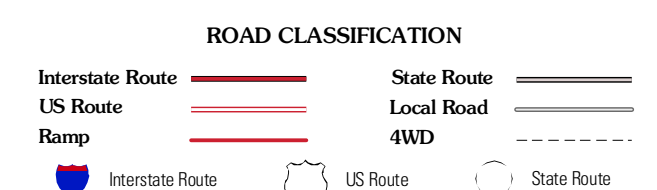
This map was produced to conform with version 0.5.10 of the
draft USGS Standards for 7.5-Minute Quadrangle Maps.
A metadata file associated with this product is also draft version 0.5.10



QUADRANGLE LOCATION

Wolforth NW	Wolforth NE	Shallowater
Smeg	Wolforth	Lubbock West
Ropesville	Busterville	Slide

ADJOINING 7.5' QUADRANGLES
TX 33102-411



WOLFORTH, TX
2010