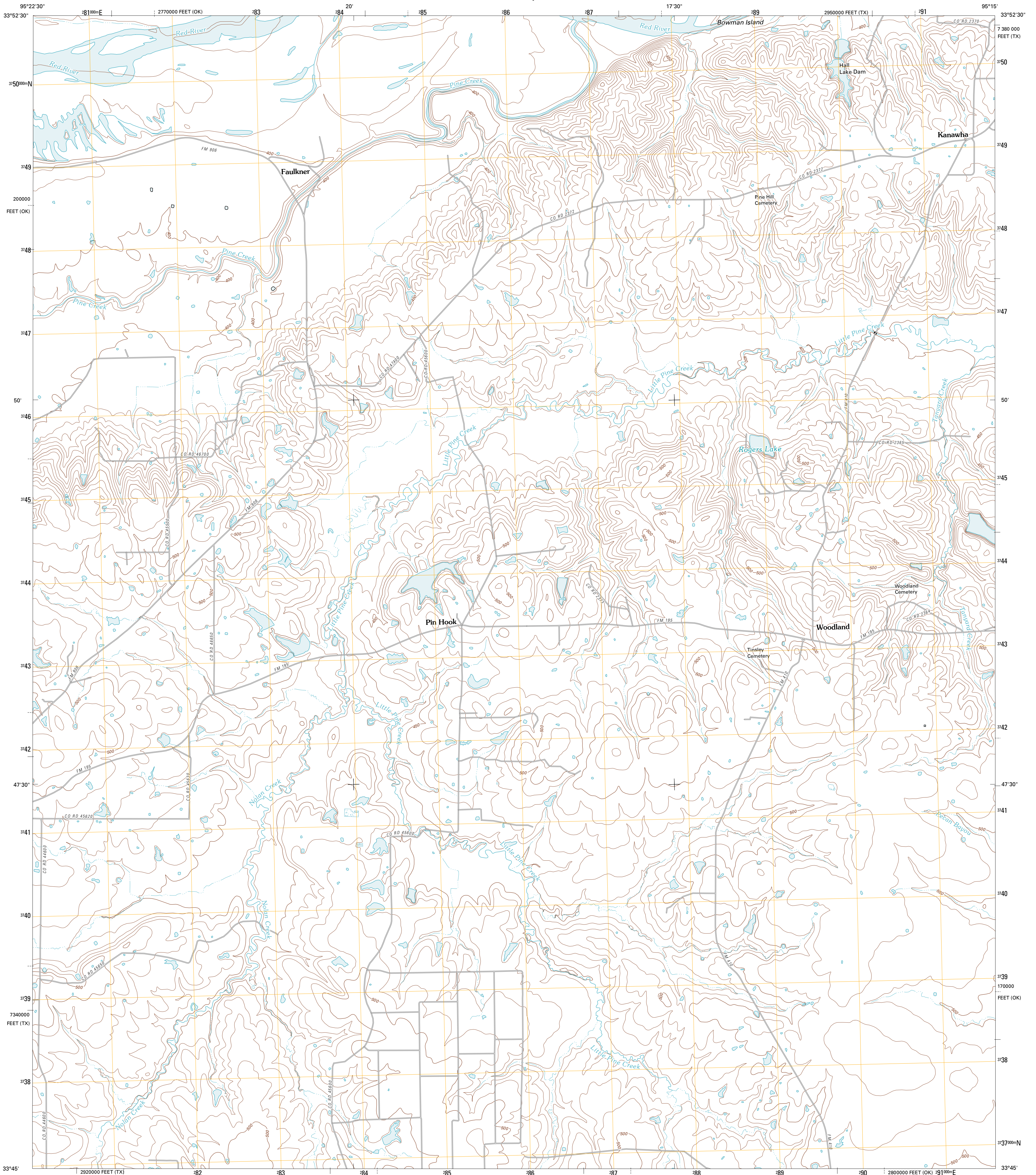




U.S. DEPARTMENT OF THE INTERIOR  
U. S. GEOLOGICAL SURVEY

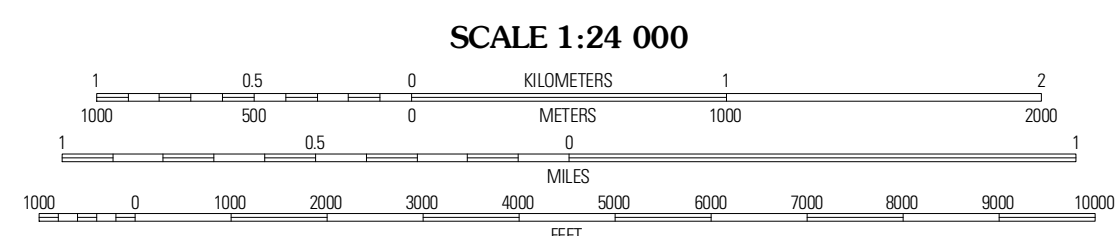
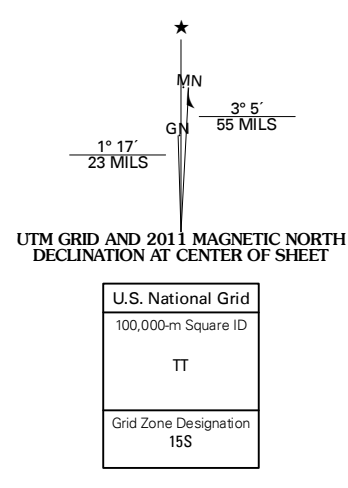


WOODLAND QUADRANGLE  
TEXAS-OKLAHOMA  
7.5-MINUTE SERIES

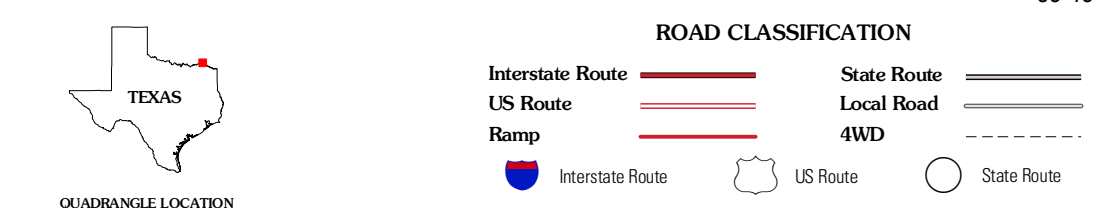


Produced by the United States Geological Survey  
North American Datum of 1983 (NAD83)  
World Geodetic System of 1984 (WGS84). Projection and  
1 000-foot ticks: Texas Coordinate System of 1983 (north  
central zone), Oklahoma Coordinate System of 1983 (south  
zone)

Imagery.....NAP, August 2008  
Roads.....02/2006-2010 Tele Atlas  
Names.....GNS, 2010  
Hydrography.....National Hydrography Dataset, 2008  
Contours.....National Elevation Dataset, 2004



CONTOUR INTERVAL 10 FEET  
NORTH AMERICAN VERTICAL DATUM OF 1988  
This map was produced to conform with version 0.5.10 of the  
draft USGS Standards for 7.5-Minute Quadrangle Maps.  
A metadata file associated with this product is draft version 0.5.11



QUADRANGLE LOCATION

Shoals	Froggille	Kiamita
Slate Shoals	Woodland	Manchester
Blossom	Detroit	Bagwell

ADJOINING 7.5 QUADRANGLES

WOODLAND, TX-OK  
2011