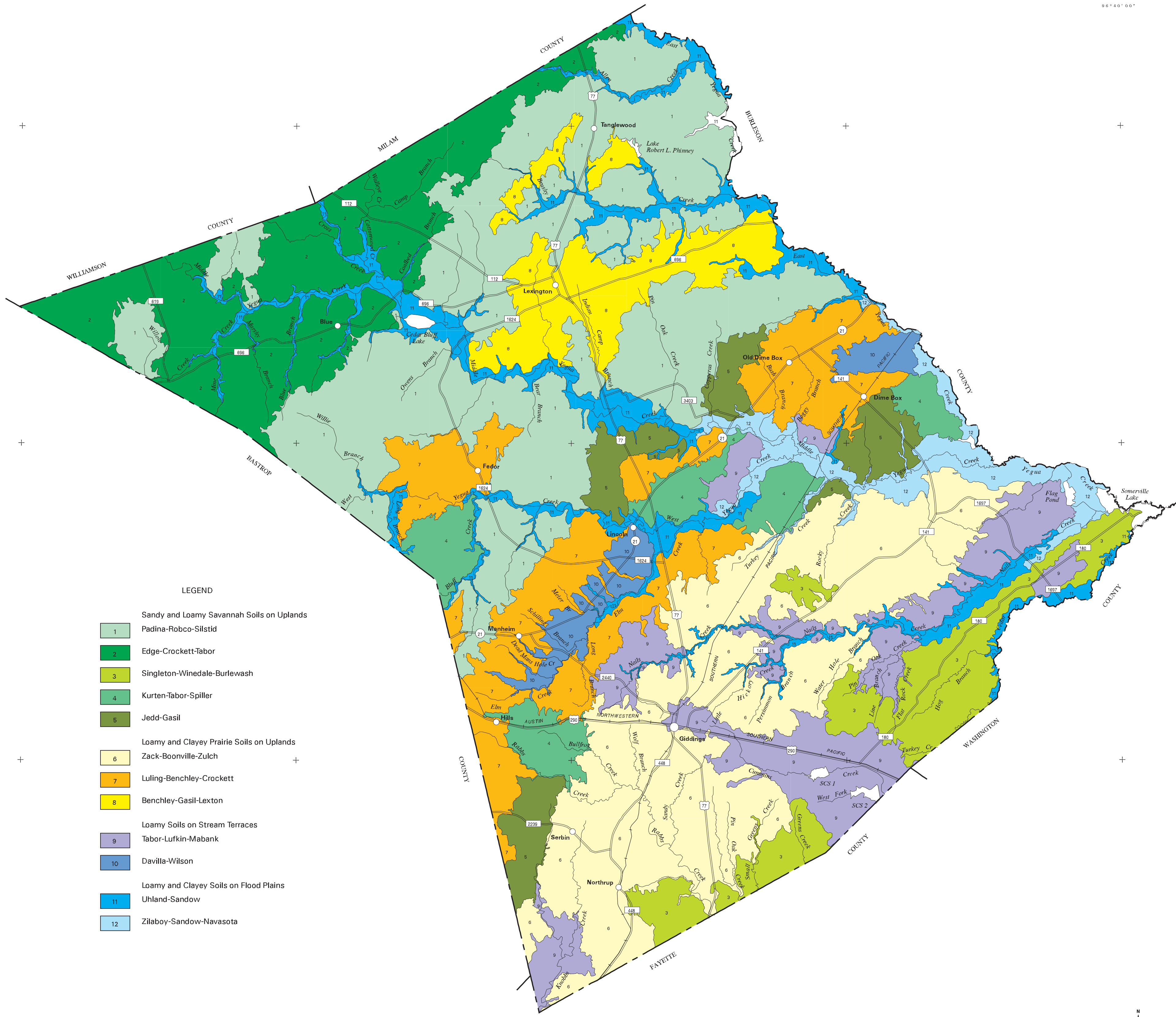


97°20'00"

96°40'00"

30°30'00"

30°10'00"



LEGEND

- 1 Sandy and Loamy Savannah Soils on Uplands
- 2 Padina-Robco-Silstid
- 3 Edge-Crockett-Tabor
- 4 Singleton-Winedale-Burlewash
- 5 Kurten-Tabor-Spiller
- 6 Jedd-Gasil
- 7 Loamy and Clayey Prairie Soils on Uplands
- 8 Zack-Boonville-Zulch
- 9 Luling-Benchley-Crockett
- 10 Benchley-Gasil-Lexton
- 11 Loamy Soils on Stream Terraces
- 12 Tabor-Lufkin-Mabank
- 13 Davilla-Wilson
- 14 Loamy and Clayey Soils on Flood Plains
- 15 Uhland-Sandow
- 16 Zilaboy-Sandow-Navasota

Each area outlined on this map consists of more than one kind of soil. The map is thus meant for general planning rather than a basis for decisions on the use of specific tracts.

UNITED STATES DEPARTMENT OF AGRICULTURE  
 NATURAL RESOURCES CONSERVATION SERVICE  
 TEXAS AGRICULTURAL EXPERIMENT STATION  
**GENERAL SOIL MAP**  
**LEE COUNTY, TEXAS**

1 0 1 2 3  
 MILES

1 0 1 2 3 4 5 6  
 KILOMETERS

SCALE = 1:125000

