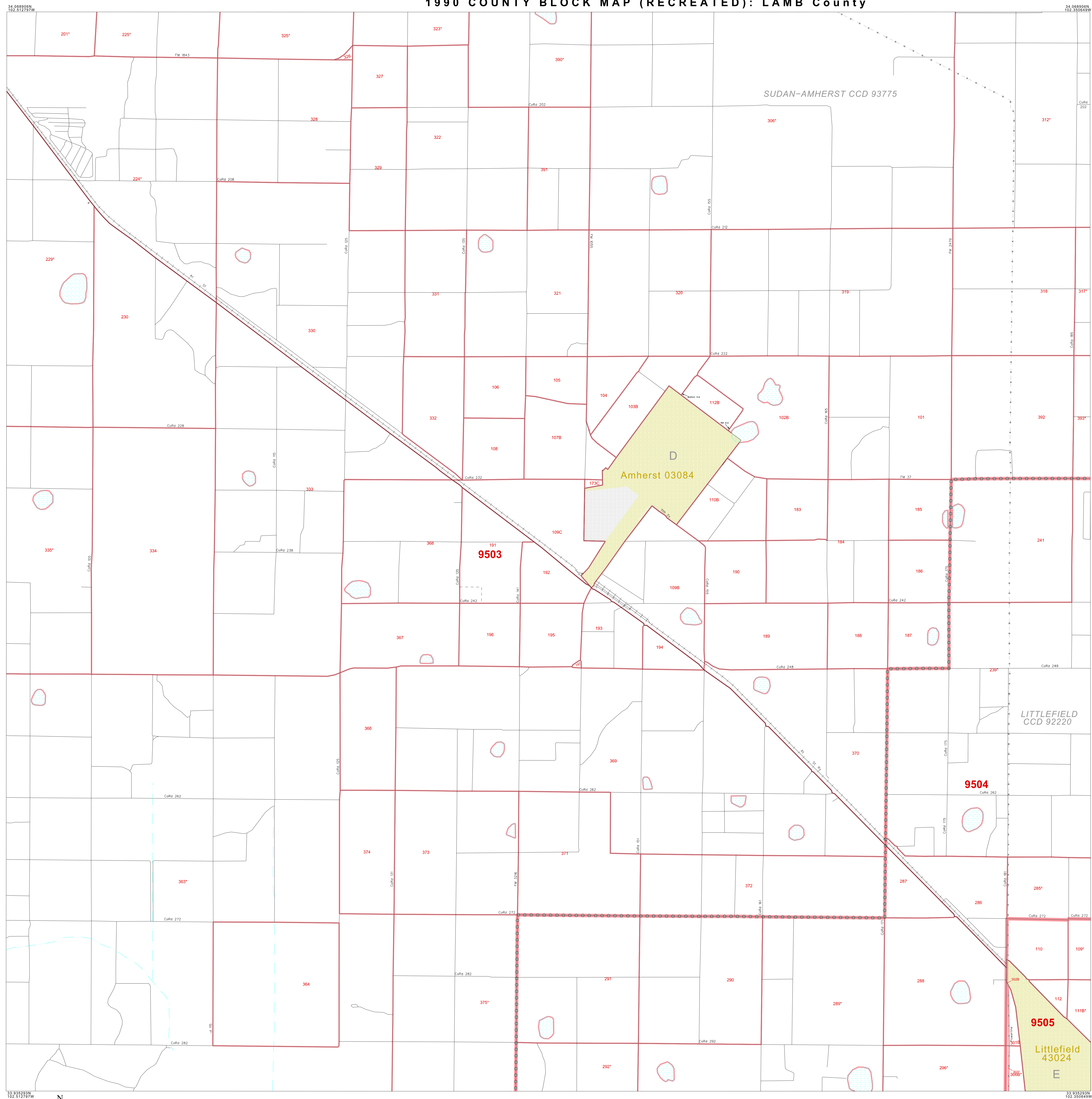


1990 COUNTY BLOCK MAP (RECREATED): LAMB County



LEGEND

SYMBOL	NAME STYLE
☆☆☆☆	INTERNATIONAL
*****	AIR
◇◇◇◇◇	Trust Land
◆◆◆◆◆	TJSA / TDSA / ANVSA
▲▲▲▲▲	ANRC
□□□□□	MINOR CIVIL DIV ¹ / CCD
▭	Place within Subject Entity
▭	Incorporated Place / CDP ¹
▭	Place outside of Subject Entity
▭	Incorporated Place / CDP ¹
▭	Census Tract / BNA ²
▭	BLOCK ³

ABBREVIATION REFERENCE: AIR = American Indian Reservation; Trust Land = Off-Reservation Trust Land; TDSA = Tribal Jurisdiction Statistical Area; TJSA = Tribal Designated Statistical Area; ANVSA = Alaska Native Village Statistical Area; ANRC = Alaska Native Regional Corporation; CCD = Census Civil Division; CDP = Census Designated Place; BNA = Block Numbering Area

FEATURES

Highway	Pipe/Paver Line	Stream/Shoaling
Secondary Road	Ridge/Physical Feature	Intermittent Stream
Deep Trench/Warehouse/Ferry	Property/Fence Line	River
Railroad	Nonvisible Boundary	Creeks

Where international, state, and/or county boundaries coincide, the map shows the boundary symbol for only the highest-ranking of these boundaries.
¹ A "1" following a place name indicates that the place is also a false MCD; the false MCD name is not shown.
² In 1990, the census-of-vessels population of ships at sea was allocated to census tracts with a "SP" suffix. An anchor symbol appeared on the 1990 maps locating a census-of-vessels tract. These maps show a very small area symbolized as a census tract with the census tract number shown near the area.
³ A "1" following a block number indicates that the block number is repeated elsewhere in the block.

Inset **Out Area**