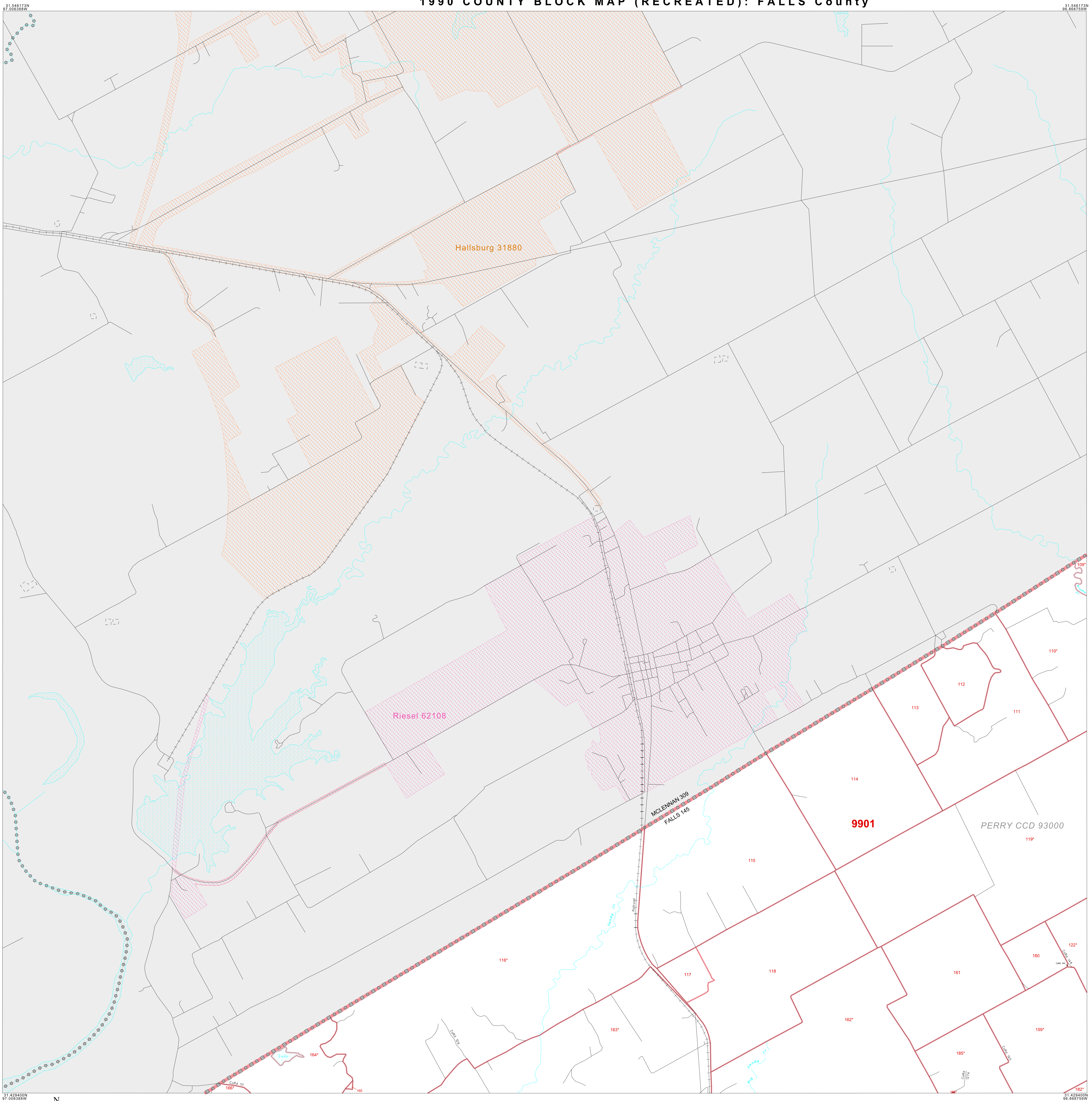


1990 COUNTY BLOCK MAP (RECREATED): FALLS County



LEGEND

SYMBOL	NAME STYLE
☆☆☆☆	INTERNATIONAL
*****	AIR
*****	Trust Land
◆◆◆◆◆	TJSA / TDSA / ANVSA
▽▽▽▽	ANRC
	MINOR CIVIL DIV. / CCD
□□□□	Place within Subject Entity
□□□□	Incorporated Place / CDP ¹
□□□□	Place outside of Subject Entity
□□□□	Incorporated Place / CDP ¹
—	Census Tract / BNA ²
—	BLOCK ³

ABBREVIATION REFERENCE: AIR = American Indian Reservation; Trust Land = Off-Reservation Trust Land; TDSA = Tribal Jurisdiction Statistical Area; TJSAs = Tribal Designated Statistical Area; ANVSA = Alaska Native Village Statistical Area; ANRC = Alaska Native Regional Corporation; CCD = Census Civil Division; CDP = Census Designated Place; BNA = Block Numbering Area

FEATURES

Highway	Pipe/Paver Line	Stream/Shoaline
Secondary Road	Ridge/Physical Feature	Intermittent Stream
Deep Trench/Warehouse/Ferry	Property/Fence Line	River
Railroad	Nonvisible Boundary	Canal

Where international, state, and/or county boundaries coincide, the map shows the boundary symbol for only the highest-ranking of these boundaries.
¹ A "*" following a place name indicates that the place is also a false MCD; the false MCD name is not shown.
² In 1990, the census-of-vessels population of ships at sea was allocated to census tracts with a "SP" suffix. An anchor symbol appeared on the 1990 maps locating a census-of-vessels tract. These maps show a very small area symbolized as a census tract with the census tract number shown near the area.
³ A "*" following a block number indicates that the block number is repeated elsewhere in the block.

31.446173N
97.006388W

The plotted map scale is 1:17500

31.429400N
97.006388W

ENTITY TYPE: County
 NAME: Falls County (145)
 ST: Texas (48)

1990 COUNTY BLOCK MAP (RECREATED)
 (WRDLK) 19548145001000000000

Key to Adjacent Sheets

1	2
4	6

SHEET LOCATION WITHIN ENTITY

SHEET 1 OF 19 PARENT SHEETS
 TOTAL SHEETS: 24 (Index 1; Parent 19; Inset 4)