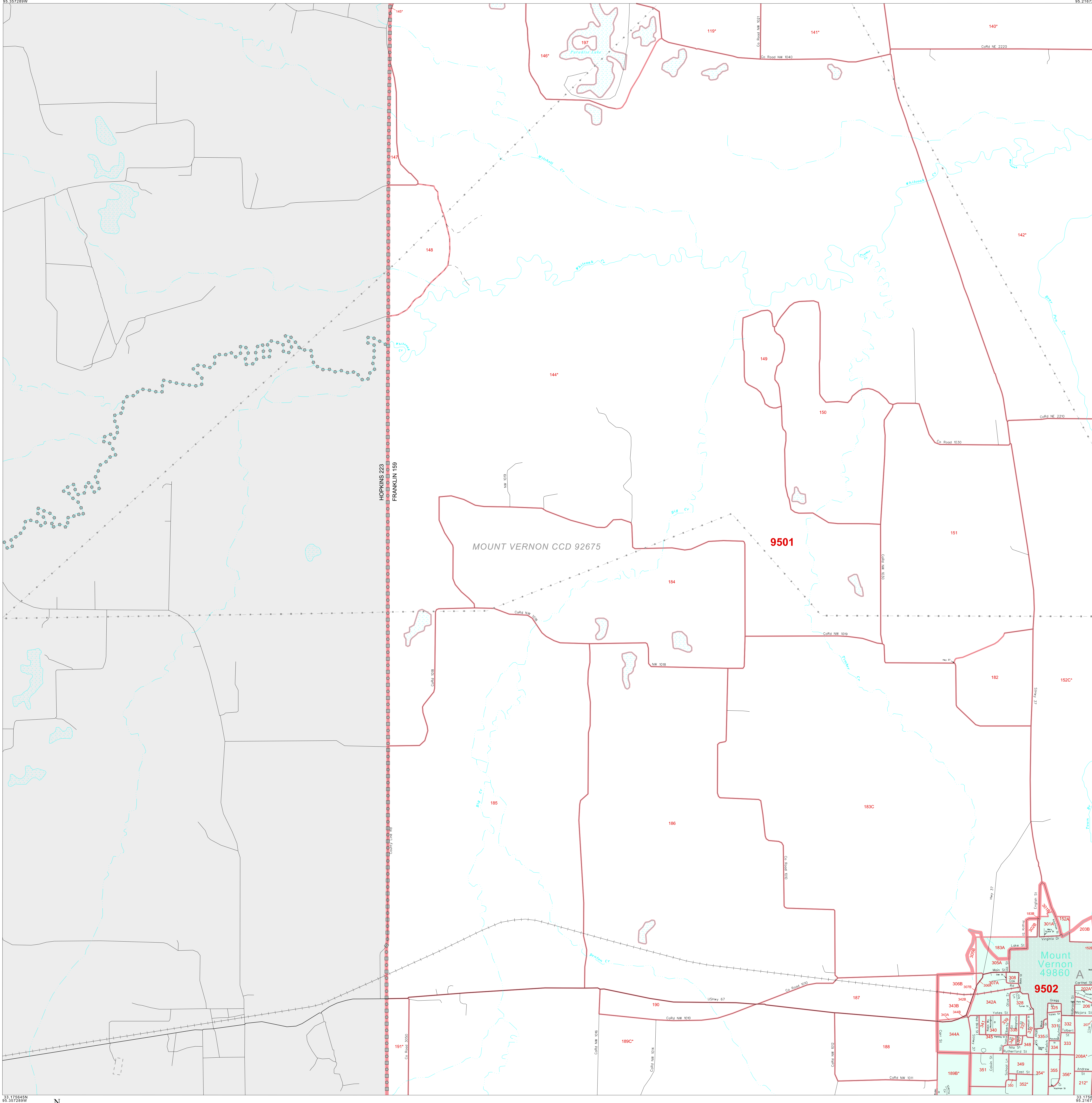


1990 COUNTY BLOCK MAP (RECREATED): FRANKLIN County

33 292489N  
95 357289W

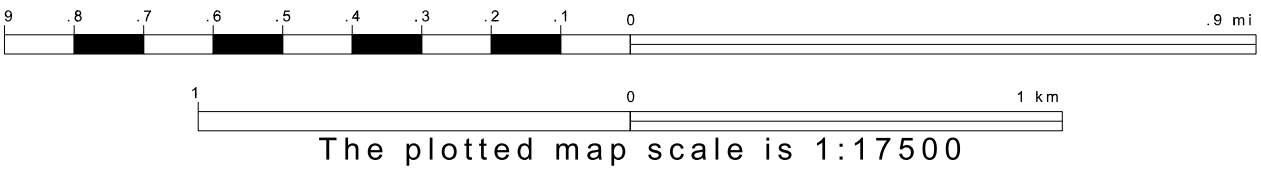
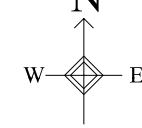
33 292489N  
95 216724W



LEGEND
SYMBOL NAME STYLE
INTERNATIONAL
AIR
Trust Land
TJSA / TDSA / ANVSA
ANRC
MINOR CIVIL DIV' / CCD
Incorporated Place / CDP 1
Incorporated Place / CDP 1
Census Tract / BNA 2
BLOCK 3
ABBREVIATION REFERENCE: AIR = American Indian Reservation; Trust Land = Off-Reservation Trust Land; TDSA = Tribal Jurisdiction Statistical Area; TJSA = Tribal Designated Statistical Area; ANVSA = Alaska Native Village Statistical Area; ANRC = Alaska Native Regional Corporation; CCD = Census Civil Division; CDP = Census Designated Place; BNA = Block Numbering Area
FEATURES
Highway
Secondary Road
Deep Inlet/Wetway/Ferry
Rollroad
Pipe/Paver Line
Ridge/Physical Feature
Property/Fence Line
Nonvisible Boundary
Stream/Shoaling
Intermittent Stream
Rise
Glacier
Inset
Out Area
Where international, state, and/or county boundaries coincide, the map shows the boundary symbol for only the highest-ranking of these boundaries.
1 A "1" following a place name indicates that the place is also a false MCD; the false MCD name is not shown.
2 In 1990, the crew-of-vessel population of ships at sea was allocated to census tracts with a "00" suffix. An anchor symbol appeared on the 1990 maps locating a crew-of-vessel tract. These maps show a very small area symbolized as a census tract with the census tract number shown near the area.
3 A "3" following a block number indicates that the block number is repeated elsewhere in the block.

33 175645N  
95 357289W

33 292489N  
95 216724W



The plotted map scale is 1:17500

ENTITY TYPE: County
NAME: Franklin County (159)
ST: Texas (48)

Key to Adjacent Sheets
Sheet Location within Entity
Grid showing sheets 1-6 and a map of the entity with sheet locations marked.

SHEET 3 OF 8 PARENT SHEETS
TOTAL SHEETS: 10 (Index 1; Parent 8; Inset 1)

All legal boundaries and names are as of January 1, 1990 as tabulated for the Public Law 94-171 and Summary Tape File products. The boundaries also reflect the feature network and coordinates as of the Census 2000 geographic base. Since 1990 the Census Bureau updated the base from the North American Datum of 1927 (NAD27) to the datum as of 1983 (NAD83) and made numerous updates to the base features from those depicted in 1990. The boundaries shown on this map are for the Census Bureau's statistical data collection and tabulation purposes only; their depiction and designation for statistical purposes does not constitute a determination of jurisdictional authority or rights or ownership or entitlement. Source: U.S. Census Bureau's TIGER database (Census 2000) Projection: State-based Albers Equal Area U.S. DEPARTMENT OF COMMERCE Economics and Statistics Administration U.S. Census Bureau

