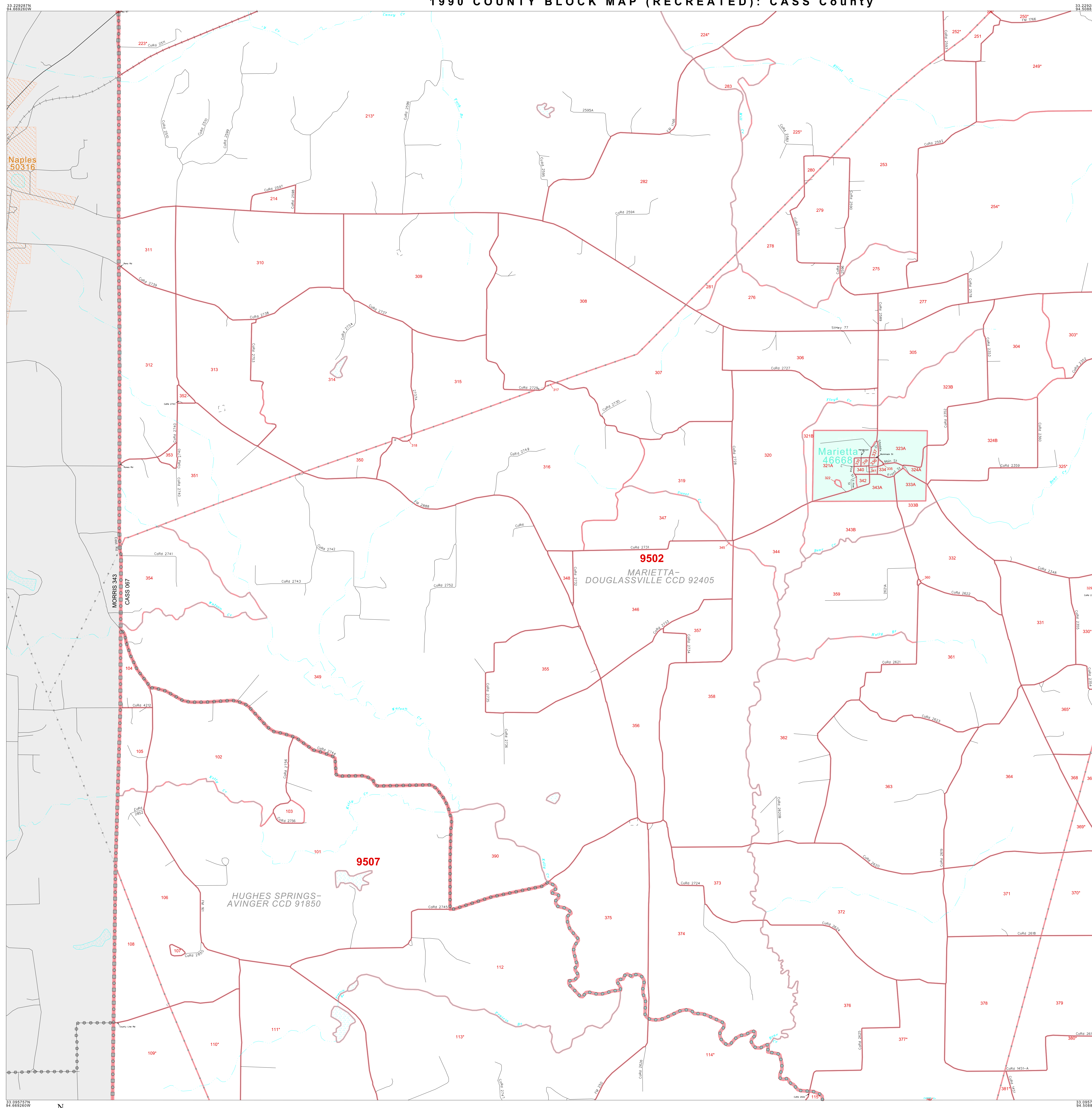


1990 COUNTY BLOCK MAP (RECREATED): CASS County



LEGEND table with columns for SYMBOL and NAME STYLE. Includes categories like INTERNATIONAL, AIR, Trust Land, TJSA / TDSA / ANVSA, ANRC, MINOR CIVIL DIVI / CCD, Incorporated Place / CDP, and Census Tract / BNA.

FEATURES table showing symbols for Highway, Secondary Road, Deep Trench/Warehouse/Ferry, Railroad, Pipe/Pleat Line, Ridge/Physical Feature, Property/Fence Line, Nonvisible Boundary, Stream/Shoaling, Intermittent Stream, River, and Glacier.

ABBREVIATION REFERENCE: AIR = American Indian Reservation; Trust Land = Off-Reservation Trust Land; TDSA = Tribal Designated Statistical Area; ANVSA = Alaska Native Village Statistical Area; ANRC = Alaska Native Regional Corporation; CCD = Census Civil Division; CDP = Census Designated Place; BNA = Block Numbering Area.

Where international, state, and/or county boundaries coincide, the map shows the boundary symbol for only the highest-ranking of these boundaries. 1 A '*' following a place name indicates that the place is also a false MCD; the false MCD name is not shown. 2 In 1990, the crew-of-vessel population of ships at sea was allocated to census tracts with a '00' suffix. An anchor symbol appeared on the 1990 maps locating a crew-of-vessel tract. These maps show a very small area symbolized as a census tract with the census tract number shown near the area. 3 A '*' following a block number indicates that the block number is repeated elsewhere in the block.

Inset map showing the location of this sheet within the parent county and a key to adjacent sheets (1, 2, 5, 6, 9, 10).

ENTITY TYPE: County NAME: Cass County (067) ST: Texas (48)

