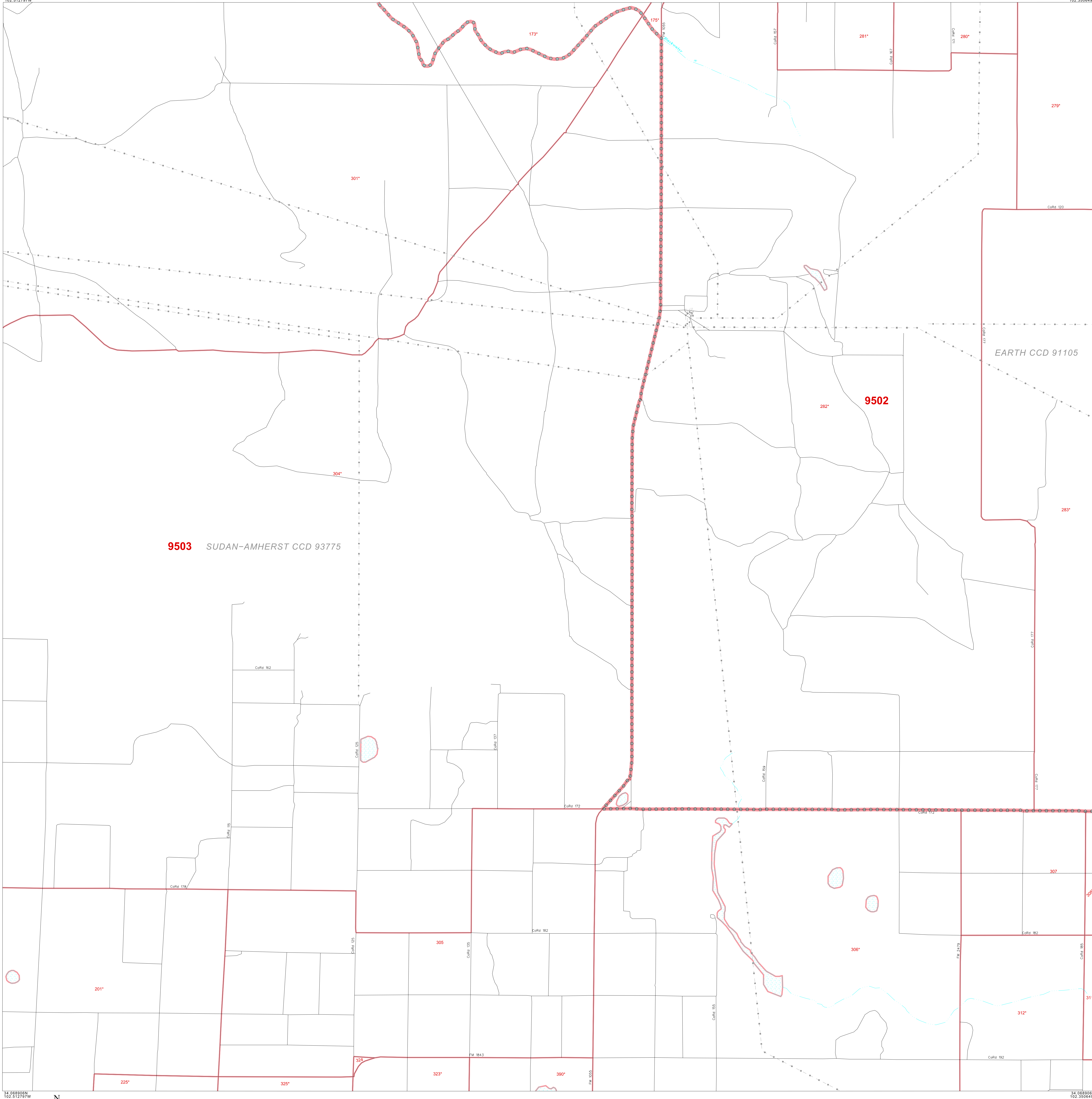


1990 COUNTY BLOCK MAP (RECREATED): LAMB County

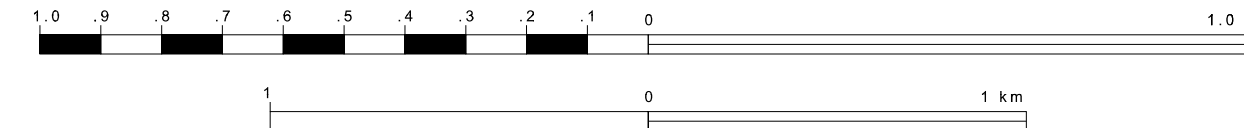
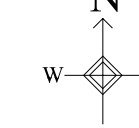
34 202536N
102 512797W

34 202536N
102 350649W

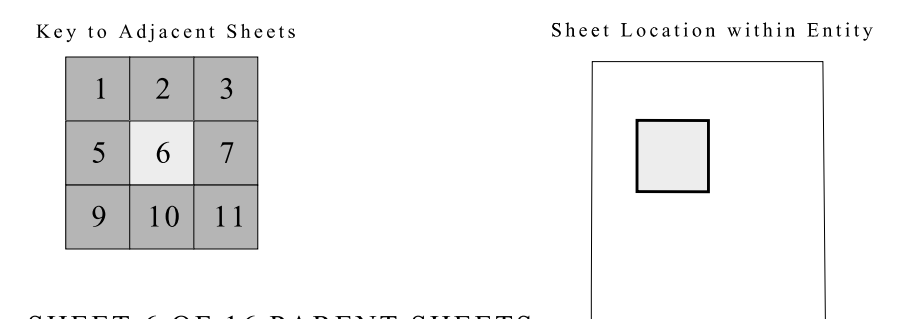


34 085850N
102 512797W

34 085850N
102 350649W



ENTITY TYPE: County
NAME: Lamb County (279)
ST: Texas (48)



SHEET 6 OF 16 PARENT SHEETS
TOTAL SHEETS: 25 (Index 1; Parent 16; Inset 8)

All legal boundaries and names are as of January 1, 1990 as tabulated for the Public Law 94-171 and Summary Tape File products. The boundaries also reflect the feature network and coordinates as of the Census 2000 geographic base. Since 1990 the Census Bureau updated the base from the North American Datum of 1927 (NAD27) to the datum as of 1983 (NAD83) and made numerous updates to the base features from those depicted in 1990. The boundaries shown on this map are for the Census Bureau's statistical data collection and tabulation purposes only; their depiction and designation for statistical purposes does not constitute a determination of jurisdictional authority or rights or ownership or entitlement. Source: U.S. Census Bureau's TIGER database (Census 2000) Projection: State-based Albers' Equal Area U.S. DEPARTMENT OF COMMERCE Economics and Statistics Administration U.S. Census Bureau

